

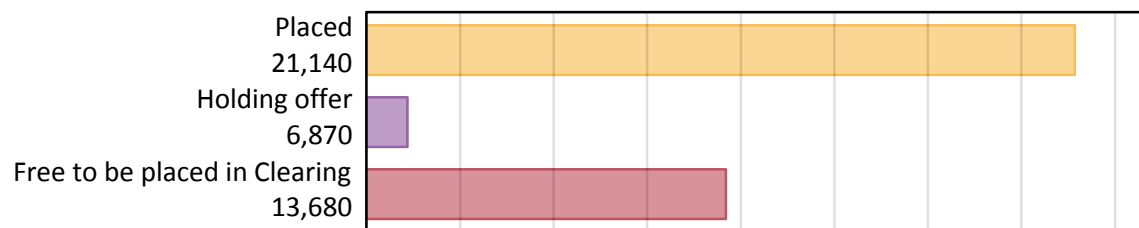
Daily Clearing Analysis: Overview

B7 Nursing analysis at 00:05 on Friday 17 August 2018 (1 day after A level results day)

AB.1 Placed applicants to nursing from the UK, 2018 cycle

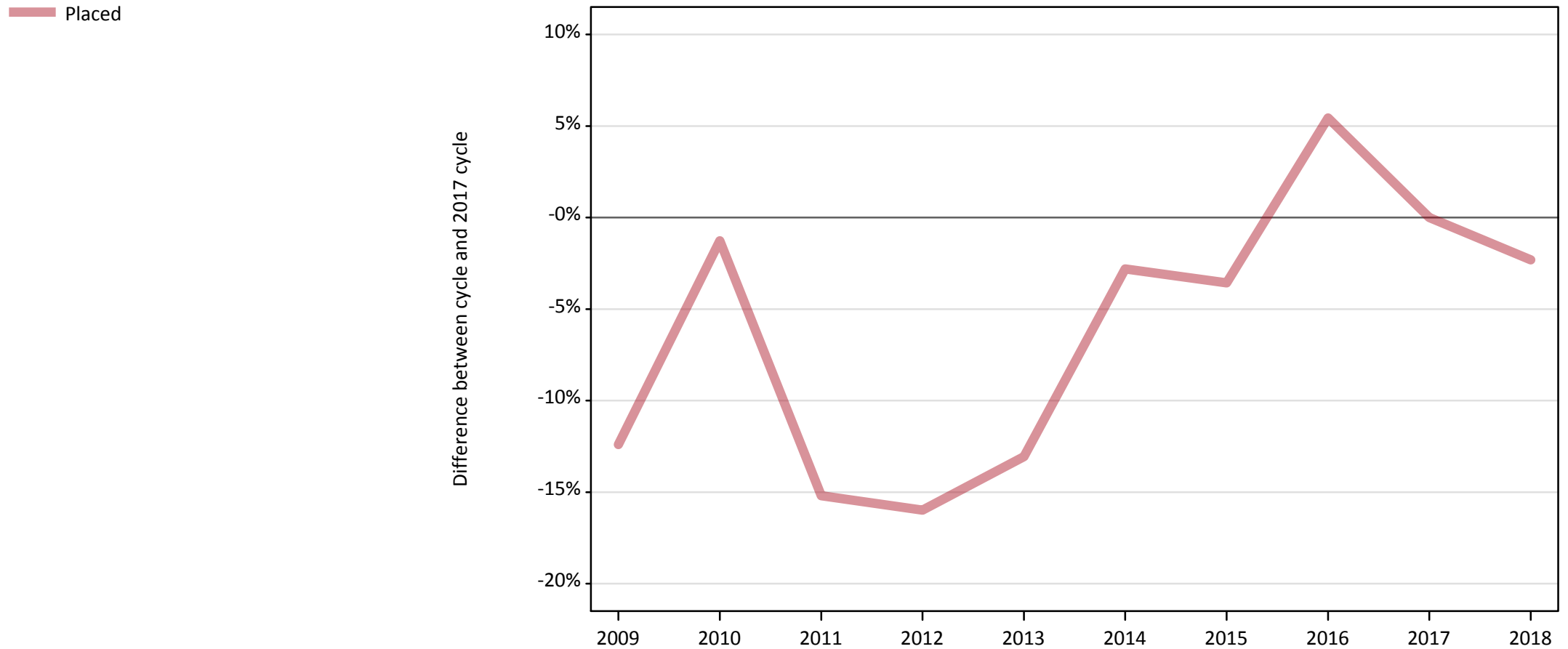
Applicant type	Status	2018
Main scheme	Placed (Clearing)	350
	Placed (Adjustment)	0
	Placed (Firm)	19,430
	Placed (Insurance)	380
	Placed (Other)	870
	Holding offer	6,870
	Free to be placed in Clearing	13,680
Direct to Clearing	Placed (Direct to Clearing)	100
	Other (Direct to Clearing)	340
All applicants	Placed	21,140

AB.2 Summary of nursing applicants who are placed, holding offers or free to be placed in Clearing (the UK)



AB.3 Placed applicants to nursing from the UK: 1 day after A level results day

Placed applicants to nursing: difference between cycle and 2017 cycle



Note: The percentage change is not plotted in the above chart for groups with fewer than 30 placed applicants in any one cycle.

AB.4 Placed applicants to nursing from the UK: 1 day after A level results day

Placed applicants to nursing: applicants at 1 day after A level results day

Applicant type	Status	2009	2010	2011	2012	2013	2014	2015	2016	2017	2018
All applicants	Placed	18,950	21,360	18,350	18,180	18,810	21,030	20,870	22,820	21,640	21,140

AB.5 Placed applicants to nursing from the UK: 1 day after A level results day

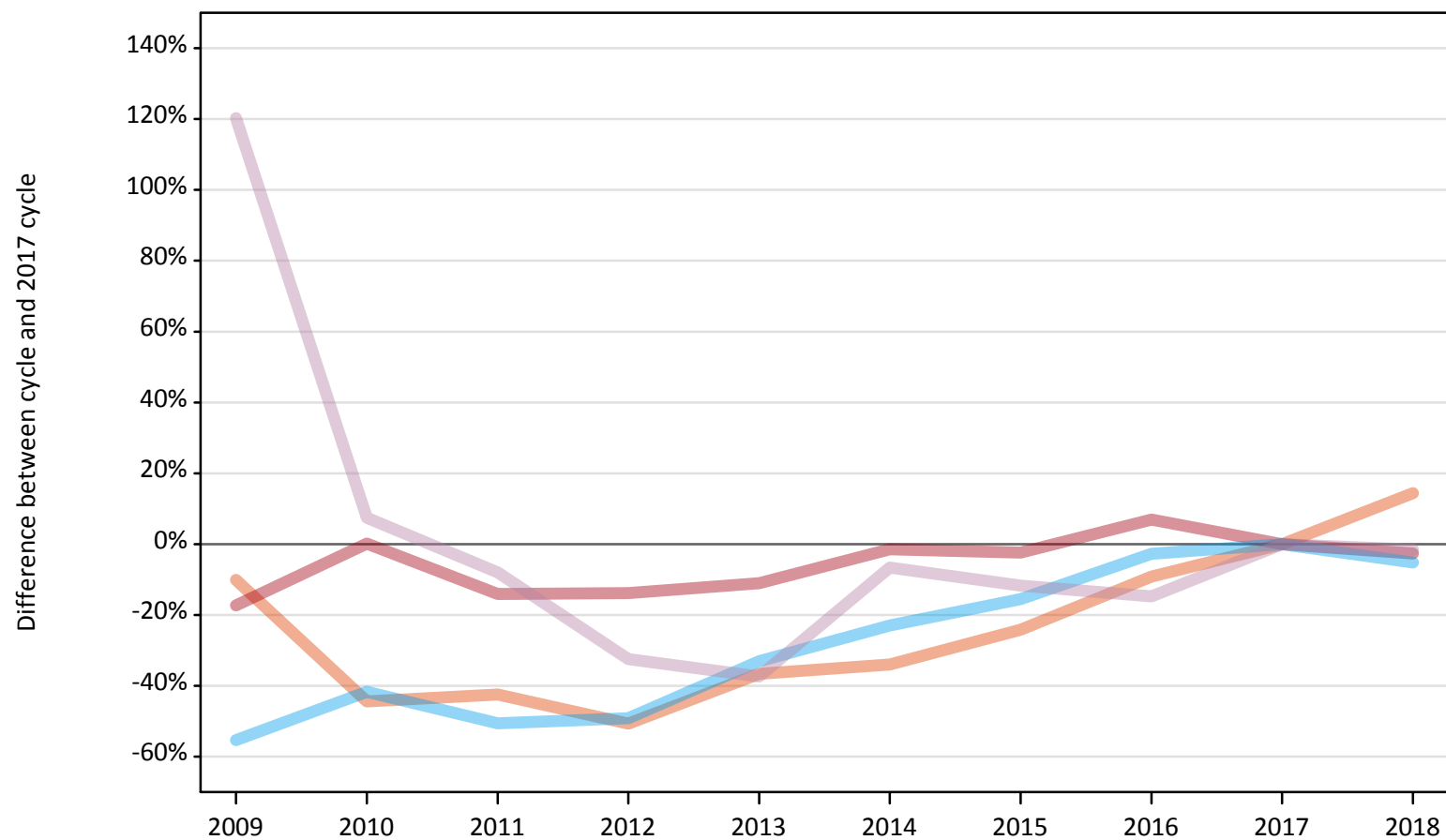
Placed applicants to nursing: difference between cycle and 2017 cycle

Applicant type	Status	2009	2010	2011	2012	2013	2014	2015	2016	2017	2018
All applicants	Placed	-12%	-1%	-15%	-16%	-13%	-3%	-4%	5%	0%	-2%

Note: The percentage change is not recorded in the above table for groups with fewer than 10 placed applicants in that cycle or in the 2017 cycle.

AB.6 Placed main scheme applicants to nursing from the UK: 1 day after A level results day
All Main scheme placed routes (excluding Adjustment): difference between cycle and 2017 cycle

- Placed (Clearing)
- Placed (Firm)
- Placed (Insurance)
- Placed (Other)



Note: The percentage change is not plotted in the above chart for groups with fewer than 30 placed applicants in any one cycle.

AB.7 Placed main scheme applicants to nursing from the UK: 1 day after A level results day

All Main scheme placed routes (excluding Adjustment): applicants at 1 day after A level results day

Applicant type	Status	2009	2010	2011	2012	2013	2014	2015	2016	2017	2018
Main scheme	Placed (Clearing)	280	170	180	150	190	200	230	280	310	350
	Placed (Firm)	16,500	19,980	17,150	17,200	17,750	19,670	19,480	21,330	19,960	19,430
	Placed (Insurance)	180	240	200	210	270	310	340	390	410	380
	Placed (Other)	1,950	950	820	600	560	830	780	760	890	870

AB.8 Placed main scheme applicants to nursing from the UK: 1 day after A level results day

All Main scheme placed routes (excluding Adjustment): difference between cycle and 2017 cycle

Applicant type	Status	2009	2010	2011	2012	2013	2014	2015	2016	2017	2018
Main scheme	Placed (Clearing)	-10%	-44%	-42%	-51%	-37%	-34%	-24%	-9%	0%	14%
	Placed (Firm)	-17%	0%	-14%	-14%	-11%	-1%	-2%	7%	0%	-3%
	Placed (Insurance)	-55%	-42%	-51%	-49%	-33%	-23%	-16%	-3%	0%	-5%
	Placed (Other)	120%	7%	-8%	-33%	-37%	-7%	-12%	-15%	0%	-2%

Note: The percentage change is not recorded in the above table for groups with fewer than 10 placed applicants in that cycle or in the 2017 cycle.

AB.9 Main scheme applicants placed to nursing through adjustment: 1 day after A level results day

Placed through adjustment: difference between cycle and 2017 cycle

[This chart is not part of this report]

AB.10 Main scheme applicants placed to nursing through adjustment: 1 day after A level results day

Placed through adjustment: applicants at 1 day after A level results day

Applicant type	Status	2009	2010	2011	2012	2013	2014	2015	2016	2017	2018
Main scheme	Placed (Adjustment)	0	0	0	0	0	0	0	0	0	0

AB.11 Main scheme applicants placed to nursing through adjustment: 1 day after A level results day

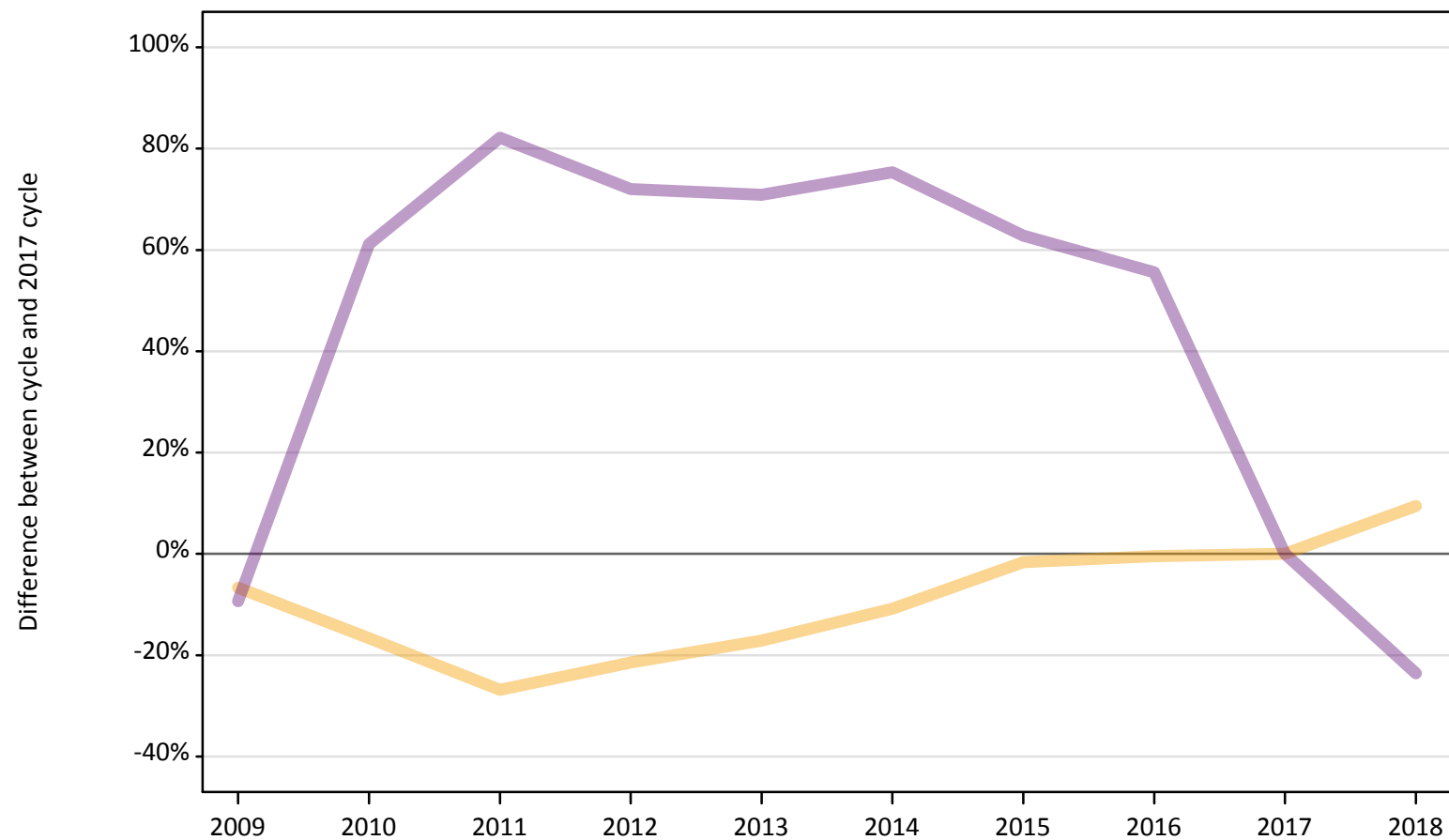
Placed through adjustment: difference between cycle and 2017 cycle

[This table is not part of this report]

AB.12 Main scheme applicants to nursing not currently placed from the UK: 1 day after A level results day

Applicants in unplaced states: difference between cycle and 2017 cycle

— Holding offer
— Free to be placed in Clearing



Note: The percentage change is not plotted in the above chart for groups with fewer than 30 unplaced applicants in any one cycle.

AB.13 Main scheme applicants to nursing not currently placed from the UK: 1 day after A level results day

Applicants in unplaced states: applicants at 1 day after A level results day

Applicant type	Status	2009	2010	2011	2012	2013	2014	2015	2016	2017	2018
Main scheme	Holding offer	5,860	5,230	4,590	4,930	5,210	5,600	6,170	6,250	6,280	6,870
	Free to be placed in Clearing	16,220	28,840	32,600	30,790	30,580	31,370	29,140	27,840	17,900	13,680

AB.14 Main scheme applicants to nursing not currently placed from the UK: 1 day after A level results day

Applicants in unplaced states: difference between cycle and 2017 cycle

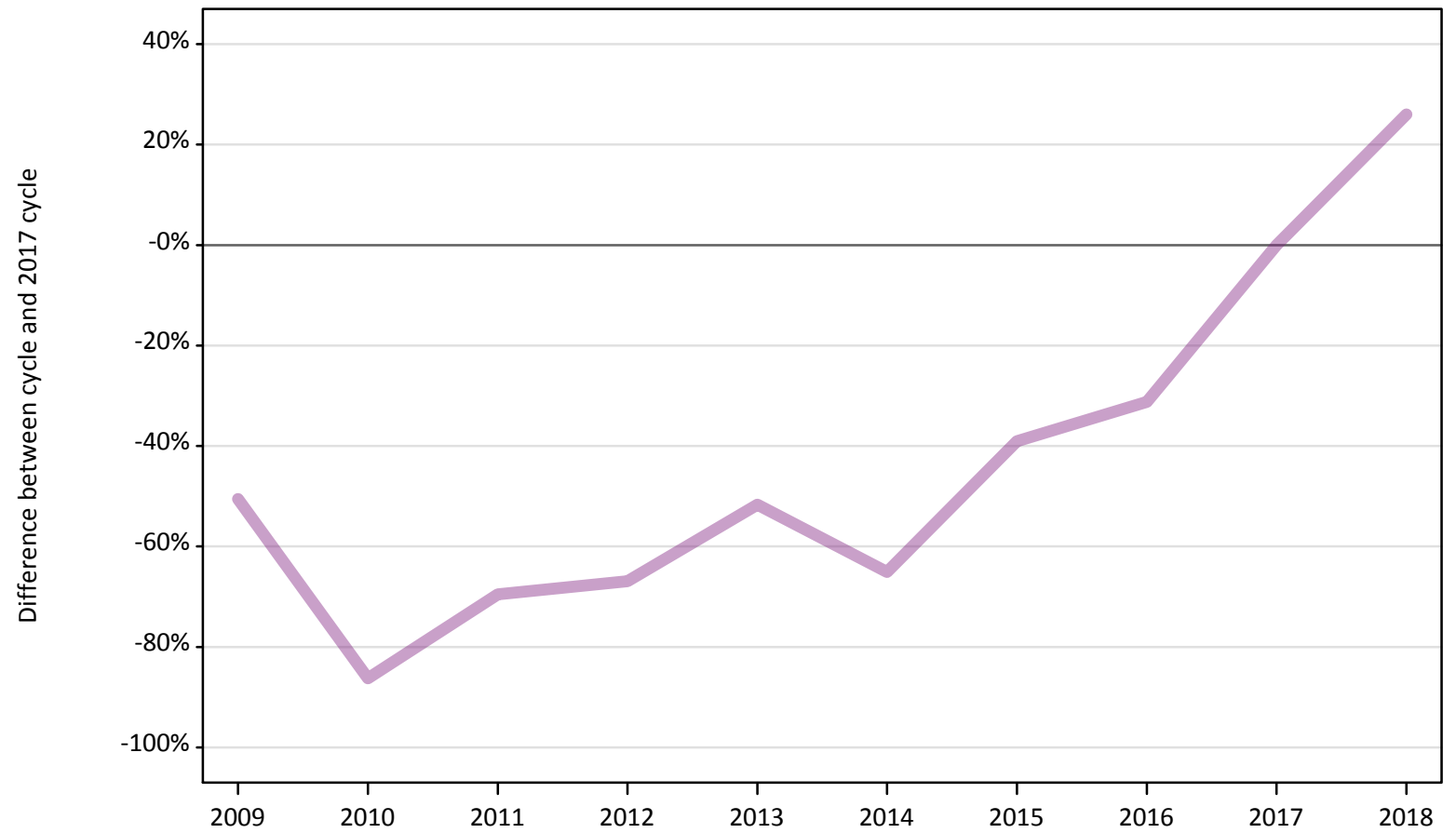
Applicant type	Status	2009	2010	2011	2012	2013	2014	2015	2016	2017	2018
Main scheme	Holding offer	-7%	-17%	-27%	-21%	-17%	-11%	-2%	-0%	0%	9%
	Free to be placed in Clearing	-9%	61%	82%	72%	71%	75%	63%	56%	0%	-24%

Note: The percentage change is not recorded in the above table for groups with fewer than 10 unplaced applicants in that cycle or in the 2017 cycle.

AB.15 Direct to Clearing applicants from the UK: 1 day after A level results day

Direct to Clearing: difference between cycle and 2017 cycle

- Placed (Direct to Clearing)
- Other (Direct to Clearing)



Note: The percentage change is not plotted in the above chart for groups with fewer than 30 placed applicants in any one cycle.

AB.16 Direct to Clearing applicants from the UK: 1 day after A level results day

Direct to Clearing 1 day after A level results day

Applicant type	Status	2009	2010	2011	2012	2013	2014	2015	2016	2017	2018
Direct to Clearing	Placed (Direct to Clearing)	50	30	10	30	40	20	30	60	80	100
	Other (Direct to Clearing)	130	40	80	90	130	90	160	190	270	340

AB.17 Direct to Clearing applicants from the UK: 1 day after A level results day

Direct to Clearing: difference between cycle and 2017 cycle

Applicant type	Status	2009	2010	2011	2012	2013	2014	2015	2016	2017	2018
Direct to Clearing	Placed (Direct to Clearing)	-40%	-68%	-85%	-69%	-56%	-75%	-60%	-32%	0%	28%
	Other (Direct to Clearing)	-51%	-86%	-70%	-67%	-52%	-65%	-39%	-31%	0%	26%

Note: The percentage change is not recorded in the above table for groups with fewer than 10 placed applicants in that cycle or in the 2017 cycle.