

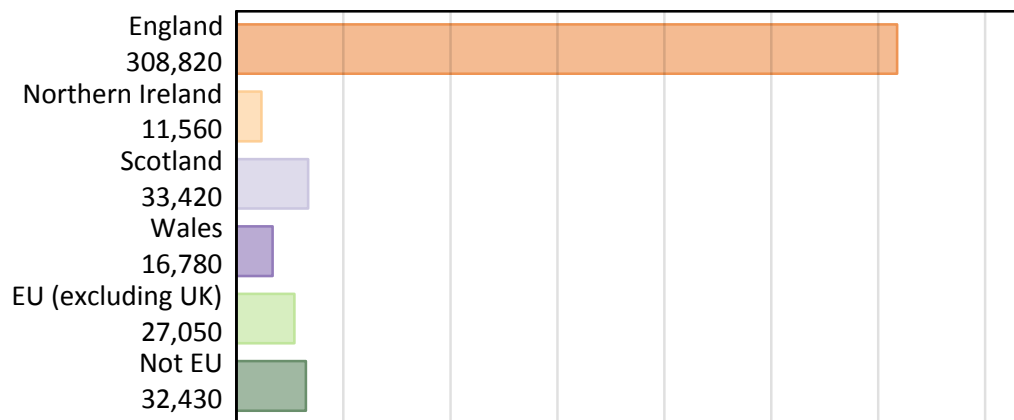
# Daily Clearing Analysis: Country

Analysis at 00:05 on Friday 17 August 2018 (1 day after A level results day)

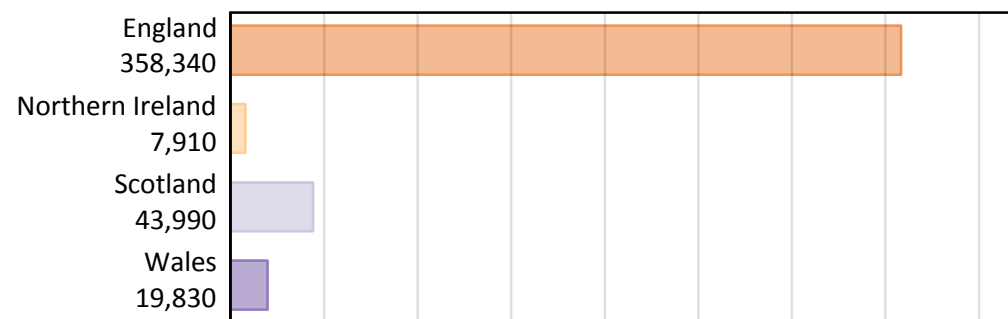
## B.1 Placed applicants by country of provider and domicile, 2018 cycle

Domicile of applicant	Country of provider				
	England	Northern Ireland	Scotland	Wales	UK
England	295,890	230	4,300	8,400	308,820
Northern Ireland	3,430	7,100	900	130	11,560
Scotland	1,350	20	32,010	40	33,420
Wales	7,220	10	130	9,420	16,780
EU (excluding UK)	21,820	320	3,900	1,010	27,050
Not EU	28,640	230	2,730	830	32,430
All	358,340	7,910	43,990	19,830	430,060

### B.2 Placed applicants by domicile group



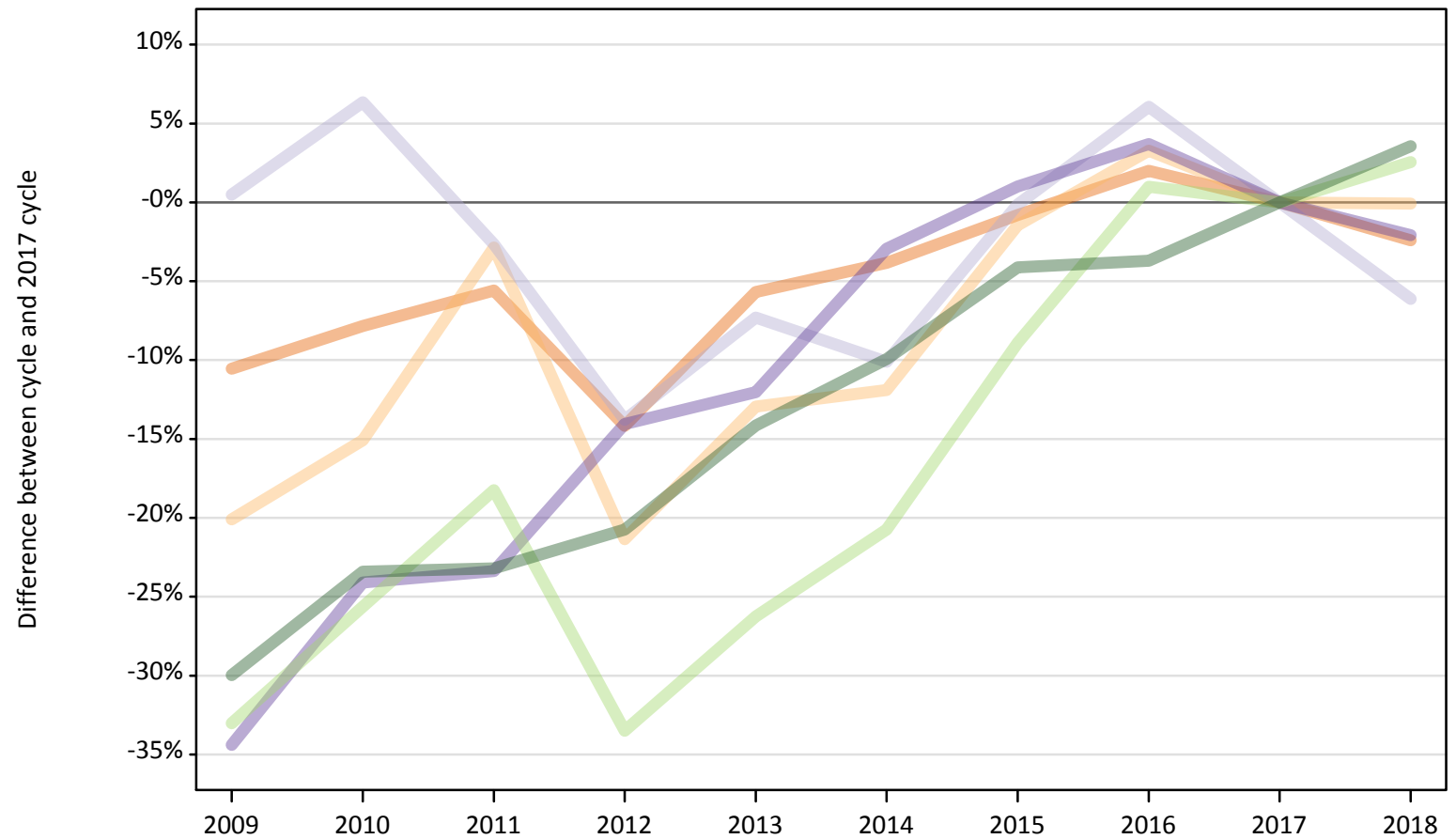
### B.3 Placed applicants by country of provider



### B.4 Placed applicants at 1 day after A level results day: providers in England

Selected applicant domiciles: difference between cycle and 2017 cycle (at 1 day after A level results day)

- England
- Northern Ireland
- Scotland
- Wales
- EU (excluding UK)
- Not EU



Note: The percentage change is not plotted in the above chart for groups with fewer than 30 placed applicants in any one cycle.

### B.5 Placed applicants at 1 day after A level results day: providers in England

Placed applicants by domicile (at 1 day after A level results day)

Domicile of applicant	2009	2010	2011	2012	2013	2014	2015	2016	2017	2018
England	271,220	279,410	286,240	260,210	285,960	291,580	300,750	309,220	303,180	295,890
Northern Ireland	2,740	2,910	3,330	2,700	2,990	3,020	3,380	3,540	3,430	3,430
Scotland	1,440	1,530	1,400	1,240	1,330	1,290	1,430	1,520	1,440	1,350
Wales	4,840	5,590	5,650	6,340	6,480	7,150	7,440	7,640	7,370	7,220
EU (excluding UK)	14,250	15,820	17,400	14,150	15,690	16,870	19,380	21,490	21,280	21,820
Not EU	19,370	21,180	21,240	21,920	23,740	24,910	26,520	26,630	27,650	28,640

### B.6 Placed applicants at 1 day after A level results day: providers in England

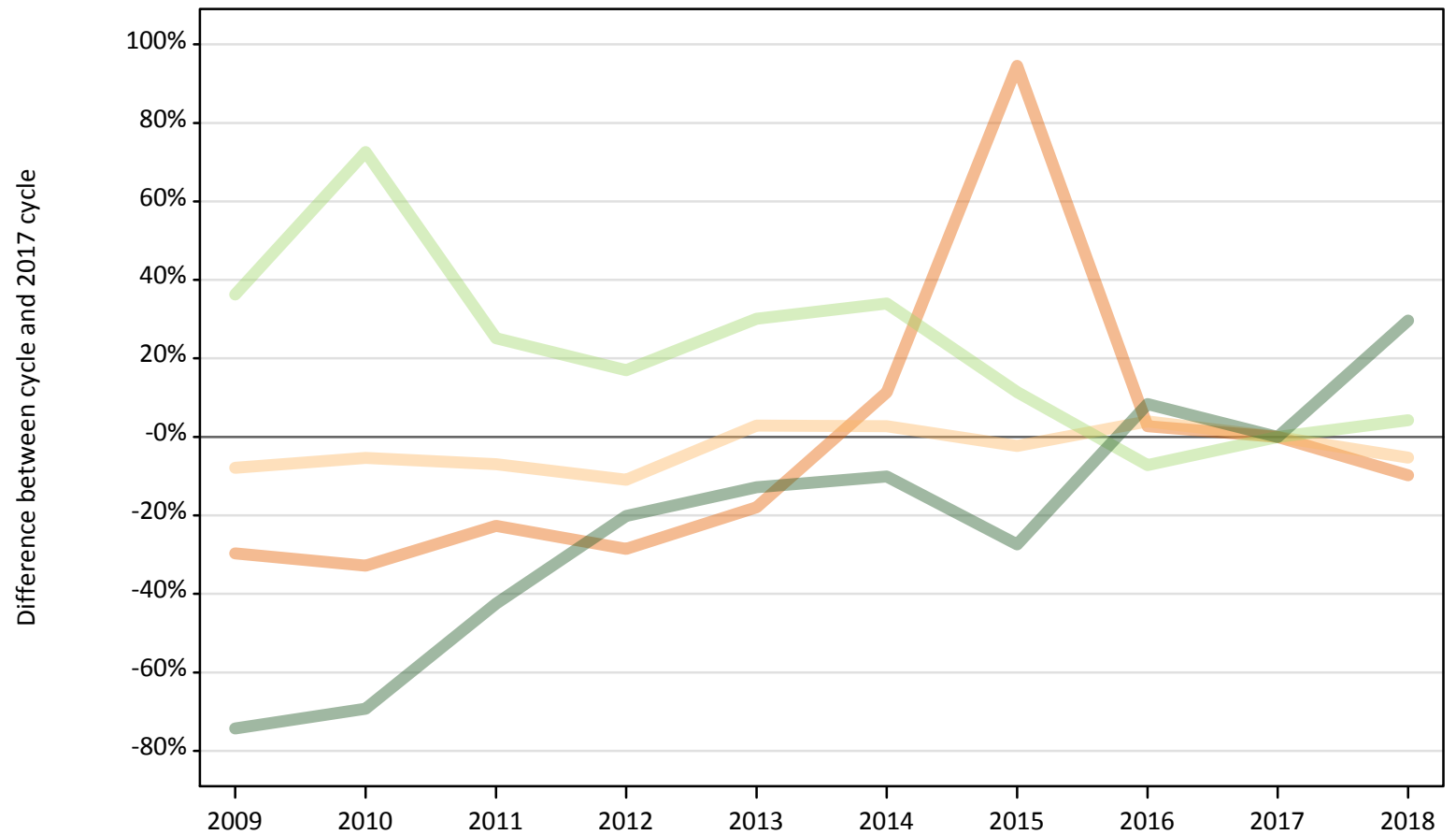
Selected applicant domiciles: difference between cycle and 2017 cycle (at 1 day after A level results day)

Domicile of applicant	2009	2010	2011	2012	2013	2014	2015	2016	2017	2018
England	-11%	-8%	-6%	-14%	-6%	-4%	-1%	2%	0%	-2%
Northern Ireland	-20%	-15%	-3%	-21%	-13%	-12%	-1%	3%	0%	-0%
Scotland	0%	6%	-3%	-14%	-7%	-10%	-0%	6%	0%	-6%
Wales	-34%	-24%	-23%	-14%	-12%	-3%	1%	4%	0%	-2%
EU (excluding UK)	-33%	-26%	-18%	-34%	-26%	-21%	-9%	1%	0%	3%
Not EU	-30%	-23%	-23%	-21%	-14%	-10%	-4%	-4%	0%	4%

Note: The percentage change is not recorded in the above table for groups with fewer than 10 placed applicants in that cycle or in the 2017 cycle.

**B.7 Placed applicants at 1 day after A level results day: providers in Northern Ireland**  
Selected applicant domiciles: difference between cycle and 2017 cycle (at 1 day after A level results day)

- England
- Northern Ireland
- Scotland
- Wales
- EU (excluding UK)
- Not EU



Note: The percentage change is not plotted in the above chart for groups with fewer than 30 placed applicants in any one cycle.

**B.8 Placed applicants at 1 day after A level results day: providers in Northern Ireland**

Placed applicants by domicile (at 1 day after A level results day)

Domicile of applicant	2009	2010	2011	2012	2013	2014	2015	2016	2017	2018
England	180	170	200	180	210	290	500	260	260	230
Northern Ireland	6,910	7,090	6,970	6,670	7,710	7,700	7,320	7,790	7,490	7,100
Scotland	20	20	20	20	10	20	20	10	30	20
Wales	10	10	10	0	0	10	10	10	10	10
EU (excluding UK)	420	530	380	360	400	410	340	280	310	320
Not EU	50	60	100	140	160	160	130	190	180	230

**B.9 Placed applicants at 1 day after A level results day: providers in Northern Ireland**

Selected applicant domiciles: difference between cycle and 2017 cycle (at 1 day after A level results day)

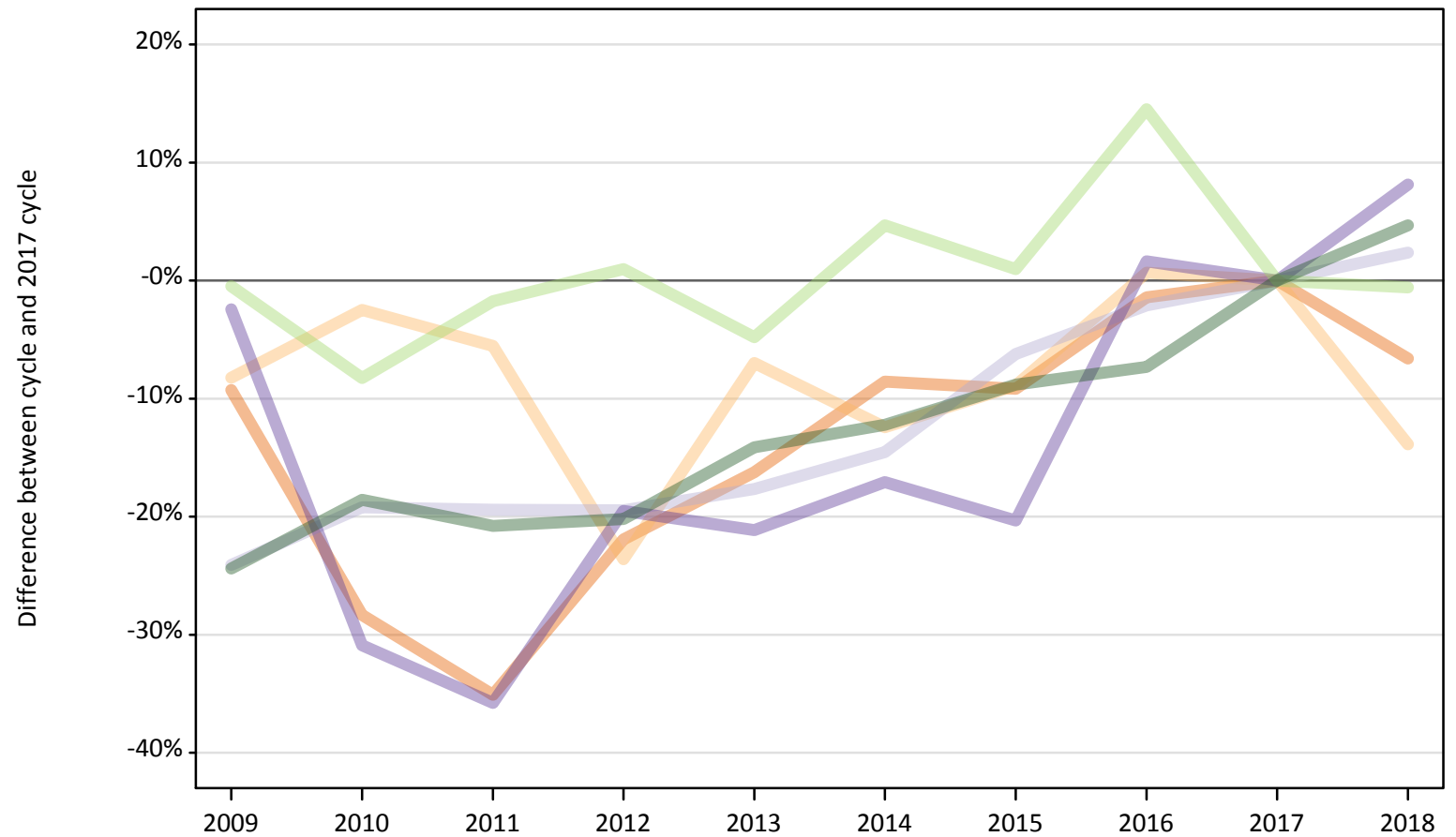
Domicile of applicant	2009	2010	2011	2012	2013	2014	2015	2016	2017	2018
England	-30%	-33%	-23%	-29%	-18%	11%	95%	3%	0%	-10%
Northern Ireland	-8%	-5%	-7%	-11%	3%	3%	-2%	4%	0%	-5%
Scotland	-39%	-29%	-39%	-14%	-57%	-43%	-46%	-54%	0%	-14%
Wales	-17%	-50%	-50%			-58%	-17%	-50%	0%	-17%
EU (excluding UK)	36%	73%	25%	17%	30%	34%	11%	-7%	0%	4%
Not EU	-74%	-69%	-42%	-20%	-13%	-10%	-27%	8%	0%	30%

Note: The percentage change is not recorded in the above table for groups with fewer than 10 placed applicants in that cycle or in the 2017 cycle.

### B.10 Placed applicants at 1 day after A level results day: providers in Scotland

Selected applicant domiciles: difference between cycle and 2017 cycle (at 1 day after A level results day)

- England
- Northern Ireland
- Scotland
- Wales
- EU (excluding UK)
- Not EU



Note: The percentage change is not plotted in the above chart for groups with fewer than 30 placed applicants in any one cycle.

**B.11 Placed applicants at 1 day after A level results day: providers in Scotland**

Placed applicants by domicile (at 1 day after A level results day)

Domicile of applicant	2009	2010	2011	2012	2013	2014	2015	2016	2017	2018
England	4,180	3,300	2,990	3,600	3,860	4,210	4,180	4,540	4,610	4,300
Northern Ireland	960	1,020	990	800	970	920	950	1,050	1,050	900
Scotland	23,740	25,260	25,200	25,180	25,750	26,730	29,320	30,610	31,270	32,010
Wales	120	90	80	100	100	100	100	130	120	130
EU (excluding UK)	3,910	3,600	3,860	3,970	3,740	4,110	3,970	4,500	3,930	3,900
Not EU	1,980	2,130	2,070	2,080	2,240	2,290	2,380	2,420	2,610	2,730

**B.12 Placed applicants at 1 day after A level results day: providers in Scotland**

Selected applicant domiciles: difference between cycle and 2017 cycle (at 1 day after A level results day)

Domicile of applicant	2009	2010	2011	2012	2013	2014	2015	2016	2017	2018
England	-9%	-28%	-35%	-22%	-16%	-9%	-9%	-1%	0%	-7%
Northern Ireland	-8%	-2%	-6%	-24%	-7%	-12%	-9%	1%	0%	-14%
Scotland	-24%	-19%	-19%	-19%	-18%	-15%	-6%	-2%	0%	2%
Wales	-2%	-31%	-36%	-20%	-21%	-17%	-20%	2%	0%	8%
EU (excluding UK)	-0%	-8%	-2%	1%	-5%	5%	1%	15%	0%	-1%
Not EU	-24%	-19%	-21%	-20%	-14%	-12%	-9%	-7%	0%	5%

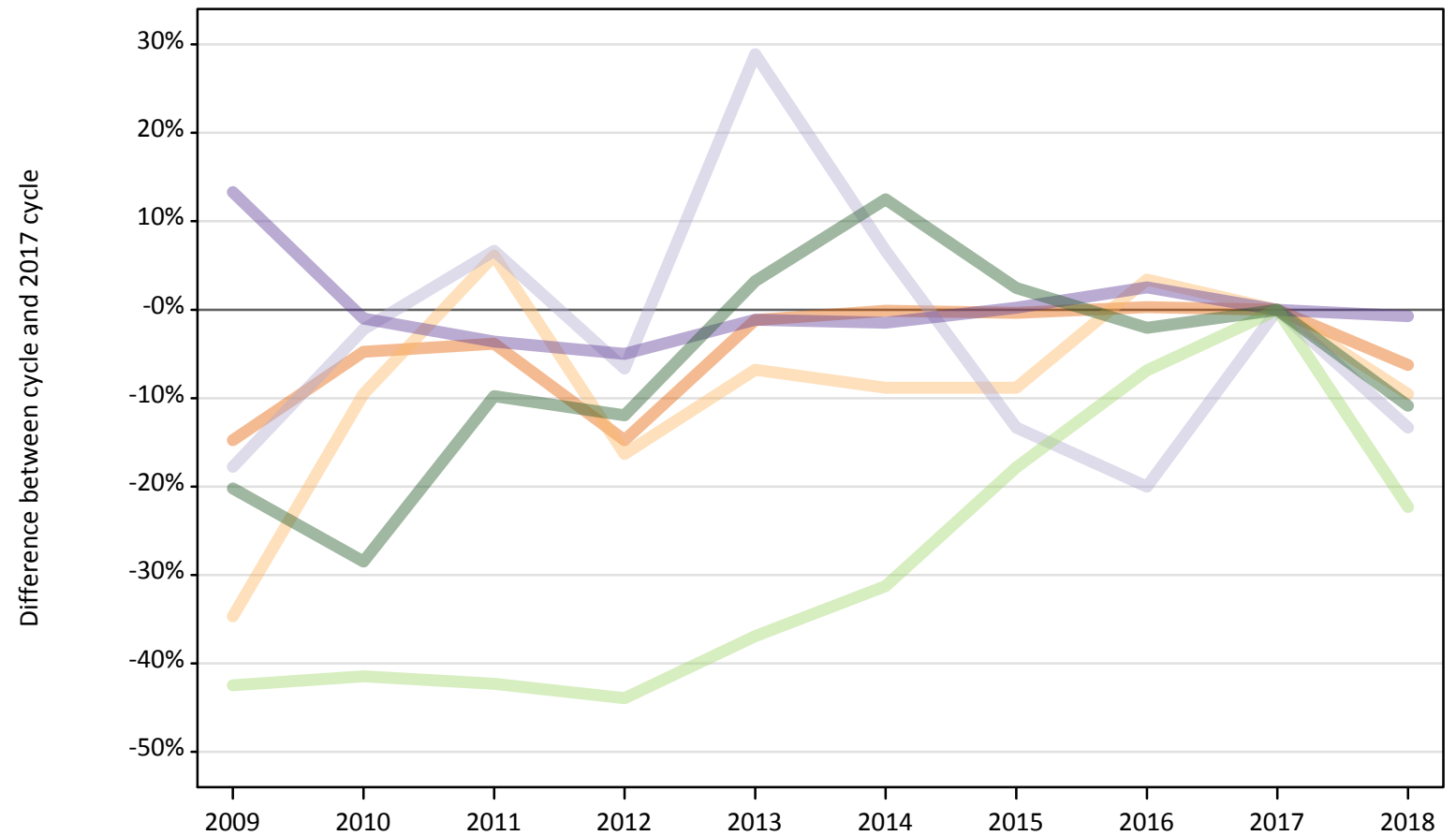
Note: The percentage change is not recorded in the above table for groups with fewer than 10 placed applicants in that cycle or in the 2017 cycle.



### B.13 Placed applicants at 1 day after A level results day: providers in Wales

Selected applicant domiciles: difference between cycle and 2017 cycle (at 1 day after A level results day)

- England
- Northern Ireland
- Scotland
- Wales
- EU (excluding UK)
- Not EU



Note: The percentage change is not plotted in the above chart for groups with fewer than 30 placed applicants in any one cycle.

**B.14 Placed applicants at 1 day after A level results day: providers in Wales**

Placed applicants by domicile (at 1 day after A level results day)

Domicile of applicant	2009	2010	2011	2012	2013	2014	2015	2016	2017	2018
England	7,640	8,530	8,610	7,640	8,850	8,950	8,930	8,980	8,960	8,400
Northern Ireland	100	130	160	120	140	130	130	150	150	130
Scotland	40	40	50	40	60	50	40	40	50	40
Wales	10,760	9,400	9,150	9,020	9,390	9,360	9,510	9,730	9,490	9,420
EU (excluding UK)	750	760	750	730	820	890	1,060	1,210	1,300	1,010
Not EU	740	670	840	820	960	1,050	950	910	930	830

**B.15 Placed applicants at 1 day after A level results day: providers in Wales**

Selected applicant domiciles: difference between cycle and 2017 cycle (at 1 day after A level results day)

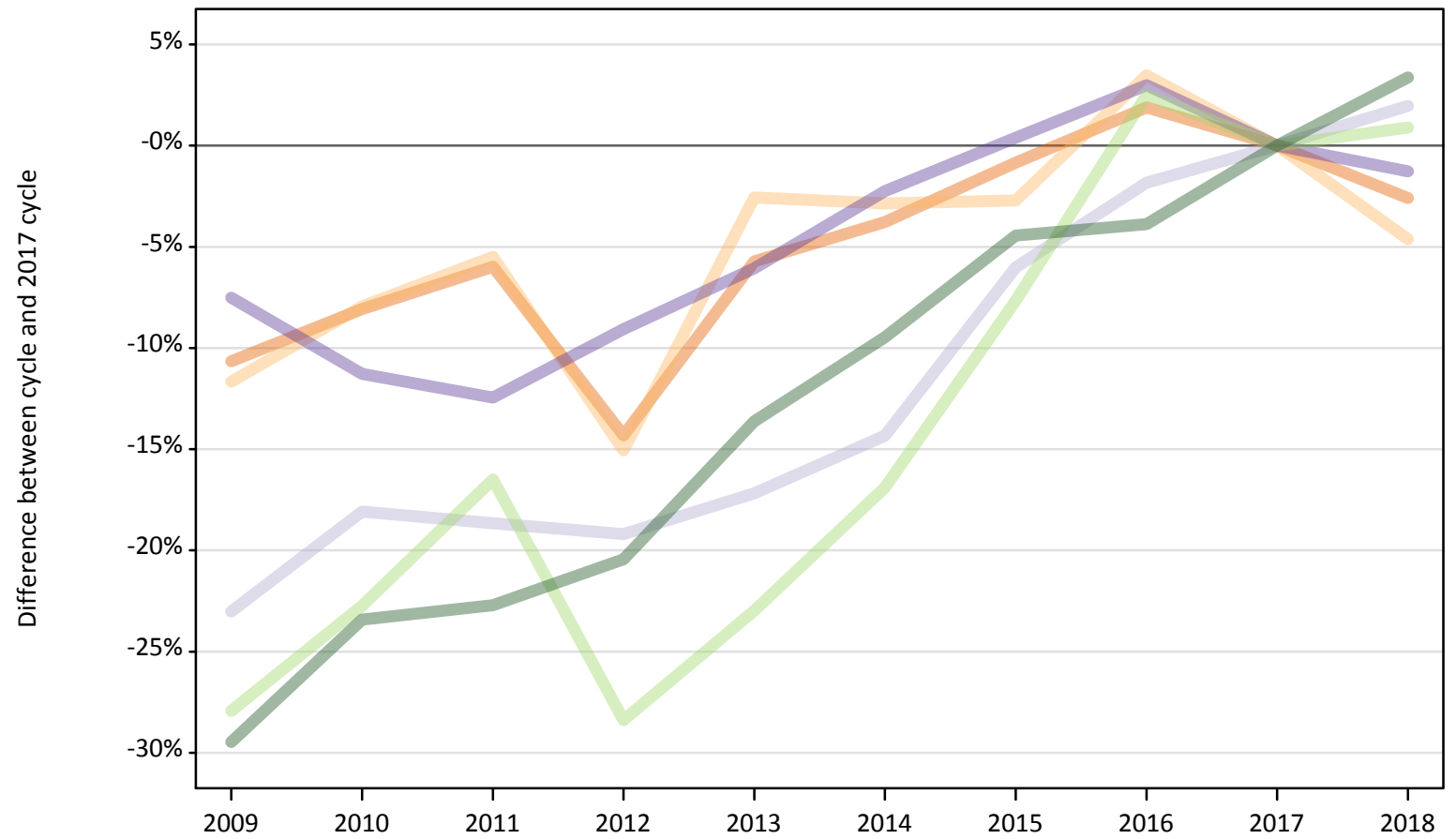
Domicile of applicant	2009	2010	2011	2012	2013	2014	2015	2016	2017	2018
England	-15%	-5%	-4%	-15%	-1%	-0%	-0%	0%	0%	-6%
Northern Ireland	-35%	-10%	6%	-16%	-7%	-9%	-9%	3%	0%	-10%
Scotland	-18%	-2%	7%	-7%	29%	7%	-13%	-20%	0%	-13%
Wales	13%	-1%	-4%	-5%	-1%	-1%	0%	3%	0%	-1%
EU (excluding UK)	-42%	-41%	-42%	-44%	-37%	-31%	-18%	-7%	0%	-22%
Not EU	-20%	-28%	-10%	-12%	3%	12%	2%	-2%	0%	-11%

Note: The percentage change is not recorded in the above table for groups with fewer than 10 placed applicants in that cycle or in the 2017 cycle.

### B.16 Placed applicants at 1 day after A level results day: providers in the UK

Selected applicant domiciles: difference between cycle and 2017 cycle (at 1 day after A level results day)

- England
- Northern Ireland
- Scotland
- Wales
- EU (excluding UK)
- Not EU



Note: The percentage change is not plotted in the above chart for groups with fewer than 30 placed applicants in any one cycle.

**B.17 Placed applicants at 1 day after A level results day: providers in the UK**

Placed applicants by domicile (at 1 day after A level results day)

Domicile of applicant	2009	2010	2011	2012	2013	2014	2015	2016	2017	2018
England	283,210	291,410	298,040	271,620	298,880	305,030	314,360	323,010	317,000	308,820
Northern Ireland	10,700	11,150	11,450	10,290	11,800	11,770	11,790	12,540	12,110	11,560
Scotland	25,230	26,850	26,660	26,490	27,150	28,080	30,810	32,180	32,780	33,420
Wales	15,720	15,080	14,880	15,460	15,970	16,620	17,070	17,510	17,000	16,780
EU (excluding UK)	19,320	20,710	22,390	19,200	20,650	22,280	24,750	27,480	26,810	27,050
Not EU	22,130	24,030	24,250	24,960	27,100	28,410	29,980	30,160	31,380	32,430

**B.18 Placed applicants at 1 day after A level results day: providers in the UK**

Selected applicant domiciles: difference between cycle and 2017 cycle (at 1 day after A level results day)

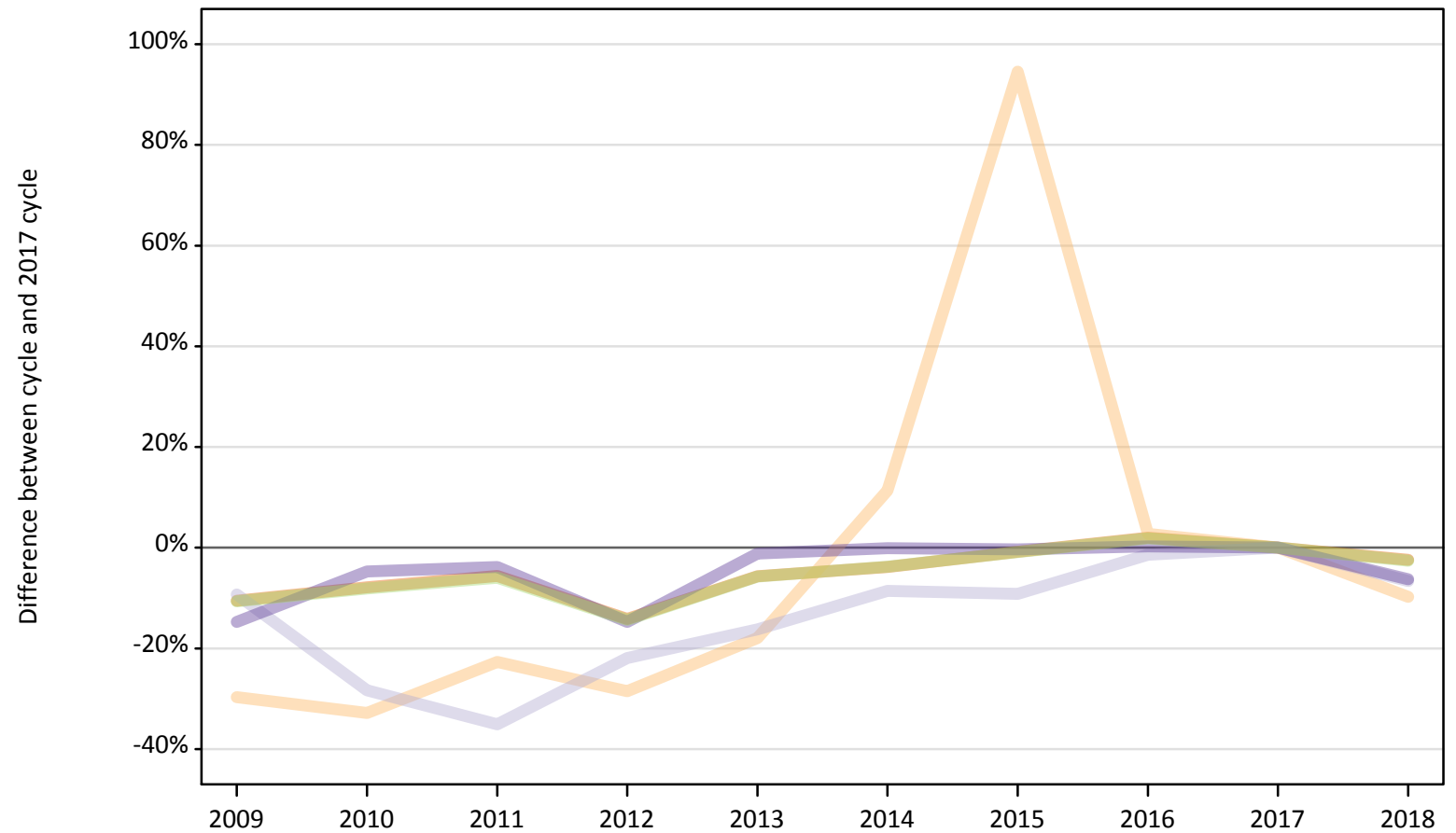
Domicile of applicant	2009	2010	2011	2012	2013	2014	2015	2016	2017	2018
England	-11%	-8%	-6%	-14%	-6%	-4%	-1%	2%	0%	-3%
Northern Ireland	-12%	-8%	-5%	-15%	-3%	-3%	-3%	3%	0%	-5%
Scotland	-23%	-18%	-19%	-19%	-17%	-14%	-6%	-2%	0%	2%
Wales	-8%	-11%	-12%	-9%	-6%	-2%	0%	3%	0%	-1%
EU (excluding UK)	-28%	-23%	-16%	-28%	-23%	-17%	-8%	3%	0%	1%
Not EU	-29%	-23%	-23%	-20%	-14%	-9%	-4%	-4%	0%	3%

Note: The percentage change is not recorded in the above table for groups with fewer than 10 placed applicants in that cycle or in the 2017 cycle.

### B.19 Placed applicants at 1 day after A level results day: domiciled in England

Selected provider countries: difference between cycle and 2017 cycle (at 1 day after A level results day)

- England
- Northern Ireland
- Scotland
- Wales
- UK



Note: The percentage change is not plotted in the above chart for groups with fewer than 30 placed applicants in any one cycle.

## B.20 Placed applicants at 1 day after A level results day: domiciled in England

Placed applicants by provider country (at 1 day after A level results day)

Country of provider	2009	2010	2011	2012	2013	2014	2015	2016	2017	2018
England	271,220	279,410	286,240	260,210	285,960	291,580	300,750	309,220	303,180	295,890
Northern Ireland	180	170	200	180	210	290	500	260	260	230
Scotland	4,180	3,300	2,990	3,600	3,860	4,210	4,180	4,540	4,610	4,300
Wales	7,640	8,530	8,610	7,640	8,850	8,950	8,930	8,980	8,960	8,400
UK	283,210	291,410	298,040	271,620	298,880	305,030	314,360	323,010	317,000	308,820

## B.21 Placed applicants at 1 day after A level results day: domiciled in England

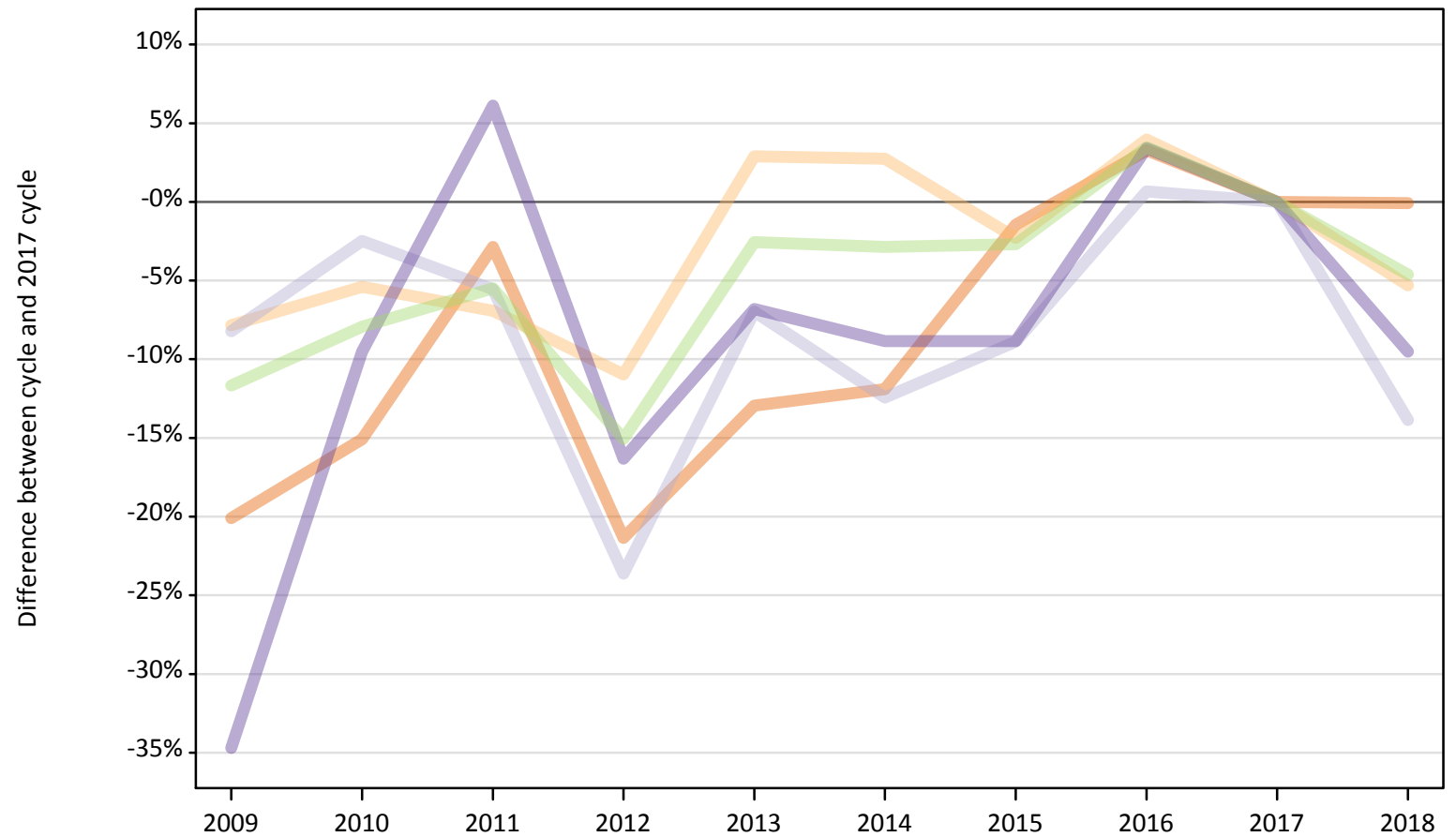
Selected provider countries: difference between cycle and 2017 cycle (at 1 day after A level results day)

Country of provider	2009	2010	2011	2012	2013	2014	2015	2016	2017	2018
England	-11%	-8%	-6%	-14%	-6%	-4%	-1%	2%	0%	-2%
Northern Ireland	-30%	-33%	-23%	-29%	-18%	11%	95%	3%	0%	-10%
Scotland	-9%	-28%	-35%	-22%	-16%	-9%	-9%	-1%	0%	-7%
Wales	-15%	-5%	-4%	-15%	-1%	-0%	-0%	0%	0%	-6%
UK	-11%	-8%	-6%	-14%	-6%	-4%	-1%	2%	0%	-3%

Note: The percentage change is not recorded in the above table for groups with fewer than 10 placed applicants in that cycle or in the 2017 cycle.

**B.22 Placed applicants at 1 day after A level results day: domiciled in Northern Ireland**  
Selected provider countries: difference between cycle and 2017 cycle (at 1 day after A level results day)

- England
- Northern Ireland
- Scotland
- Wales
- UK



Note: The percentage change is not plotted in the above chart for groups with fewer than 30 placed applicants in any one cycle.

### B.23 Placed applicants at 1 day after A level results day: domiciled in Northern Ireland

Placed applicants by provider country (at 1 day after A level results day)

Country of provider	2009	2010	2011	2012	2013	2014	2015	2016	2017	2018
England	2,740	2,910	3,330	2,700	2,990	3,020	3,380	3,540	3,430	3,430
Northern Ireland	6,910	7,090	6,970	6,670	7,710	7,700	7,320	7,790	7,490	7,100
Scotland	960	1,020	990	800	970	920	950	1,050	1,050	900
Wales	100	130	160	120	140	130	130	150	150	130
UK	10,700	11,150	11,450	10,290	11,800	11,770	11,790	12,540	12,110	11,560

### B.24 Placed applicants at 1 day after A level results day: domiciled in Northern Ireland

Selected provider countries: difference between cycle and 2017 cycle (at 1 day after A level results day)

Country of provider	2009	2010	2011	2012	2013	2014	2015	2016	2017	2018
England	-20%	-15%	-3%	-21%	-13%	-12%	-1%	3%	0%	-0%
Northern Ireland	-8%	-5%	-7%	-11%	3%	3%	-2%	4%	0%	-5%
Scotland	-8%	-2%	-6%	-24%	-7%	-12%	-9%	1%	0%	-14%
Wales	-35%	-10%	6%	-16%	-7%	-9%	-9%	3%	0%	-10%
UK	-12%	-8%	-5%	-15%	-3%	-3%	-3%	3%	0%	-5%

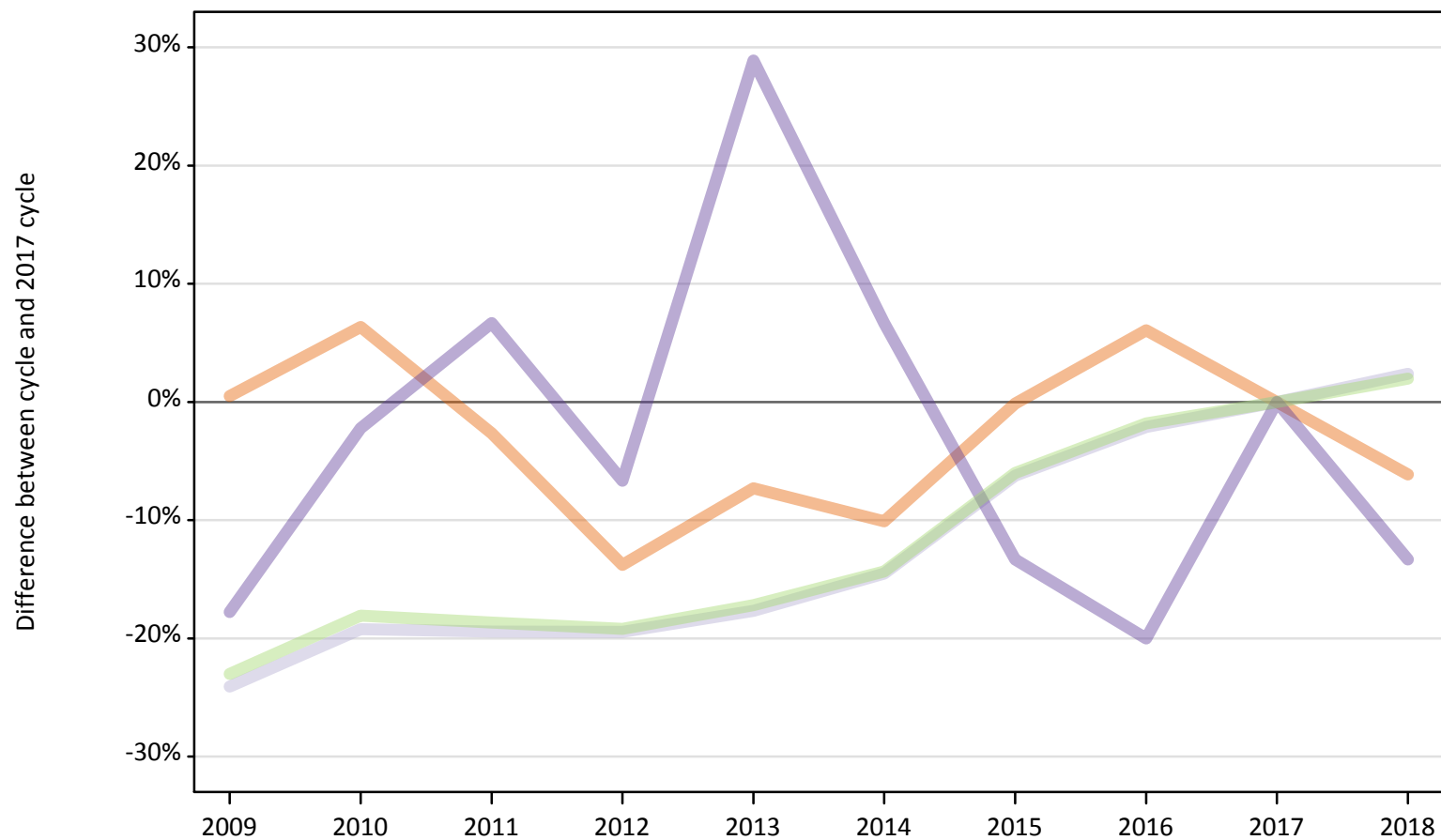
Note: The percentage change is not recorded in the above table for groups with fewer than 10 placed applicants in that cycle or in the 2017 cycle.



### B.25 Placed applicants at 1 day after A level results day: domiciled in Scotland

Selected provider countries: difference between cycle and 2017 cycle (at 1 day after A level results day)

- England
- Northern Ireland
- Scotland
- Wales
- UK



Note: The percentage change is not plotted in the above chart for groups with fewer than 30 placed applicants in any one cycle.

**B.26 Placed applicants at 1 day after A level results day: domiciled in Scotland**

Placed applicants by provider country (at 1 day after A level results day)

Country of provider	2009	2010	2011	2012	2013	2014	2015	2016	2017	2018
England	1,440	1,530	1,400	1,240	1,330	1,290	1,430	1,520	1,440	1,350
Northern Ireland	20	20	20	20	10	20	20	10	30	20
Scotland	23,740	25,260	25,200	25,180	25,750	26,730	29,320	30,610	31,270	32,010
Wales	40	40	50	40	60	50	40	40	50	40
UK	25,230	26,850	26,660	26,490	27,150	28,080	30,810	32,180	32,780	33,420

**B.27 Placed applicants at 1 day after A level results day: domiciled in Scotland**

Selected provider countries: difference between cycle and 2017 cycle (at 1 day after A level results day)

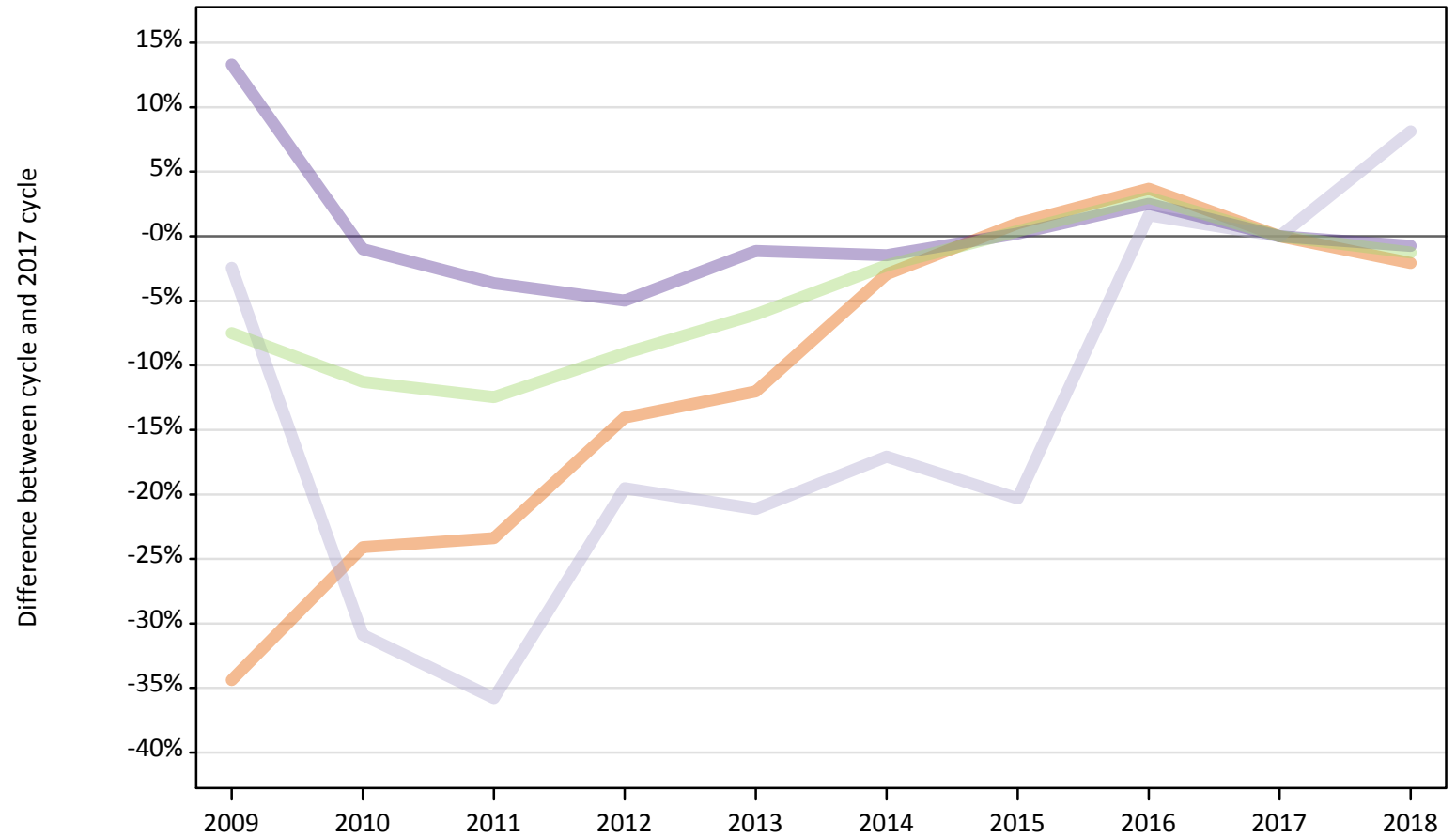
Country of provider	2009	2010	2011	2012	2013	2014	2015	2016	2017	2018
England	0%	6%	-3%	-14%	-7%	-10%	-0%	6%	0%	-6%
Northern Ireland	-39%	-29%	-39%	-14%	-57%	-43%	-46%	-54%	0%	-14%
Scotland	-24%	-19%	-19%	-19%	-18%	-15%	-6%	-2%	0%	2%
Wales	-18%	-2%	7%	-7%	29%	7%	-13%	-20%	0%	-13%
UK	-23%	-18%	-19%	-19%	-17%	-14%	-6%	-2%	0%	2%

Note: The percentage change is not recorded in the above table for groups with fewer than 10 placed applicants in that cycle or in the 2017 cycle.

### B.28 Placed applicants at 1 day after A level results day: domiciled in Wales

Selected provider countries: difference between cycle and 2017 cycle (at 1 day after A level results day)

- England
- Northern Ireland
- Scotland
- Wales
- UK



Note: The percentage change is not plotted in the above chart for groups with fewer than 30 placed applicants in any one cycle.

**B.29 Placed applicants at 1 day after A level results day: domiciled in Wales**

Placed applicants by provider country (at 1 day after A level results day)

Country of provider	2009	2010	2011	2012	2013	2014	2015	2016	2017	2018
England	4,840	5,590	5,650	6,340	6,480	7,150	7,440	7,640	7,370	7,220
Northern Ireland	10	10	10	0	0	10	10	10	10	10
Scotland	120	90	80	100	100	100	100	130	120	130
Wales	10,760	9,400	9,150	9,020	9,390	9,360	9,510	9,730	9,490	9,420
UK	15,720	15,080	14,880	15,460	15,970	16,620	17,070	17,510	17,000	16,780

**B.30 Placed applicants at 1 day after A level results day: domiciled in Wales**

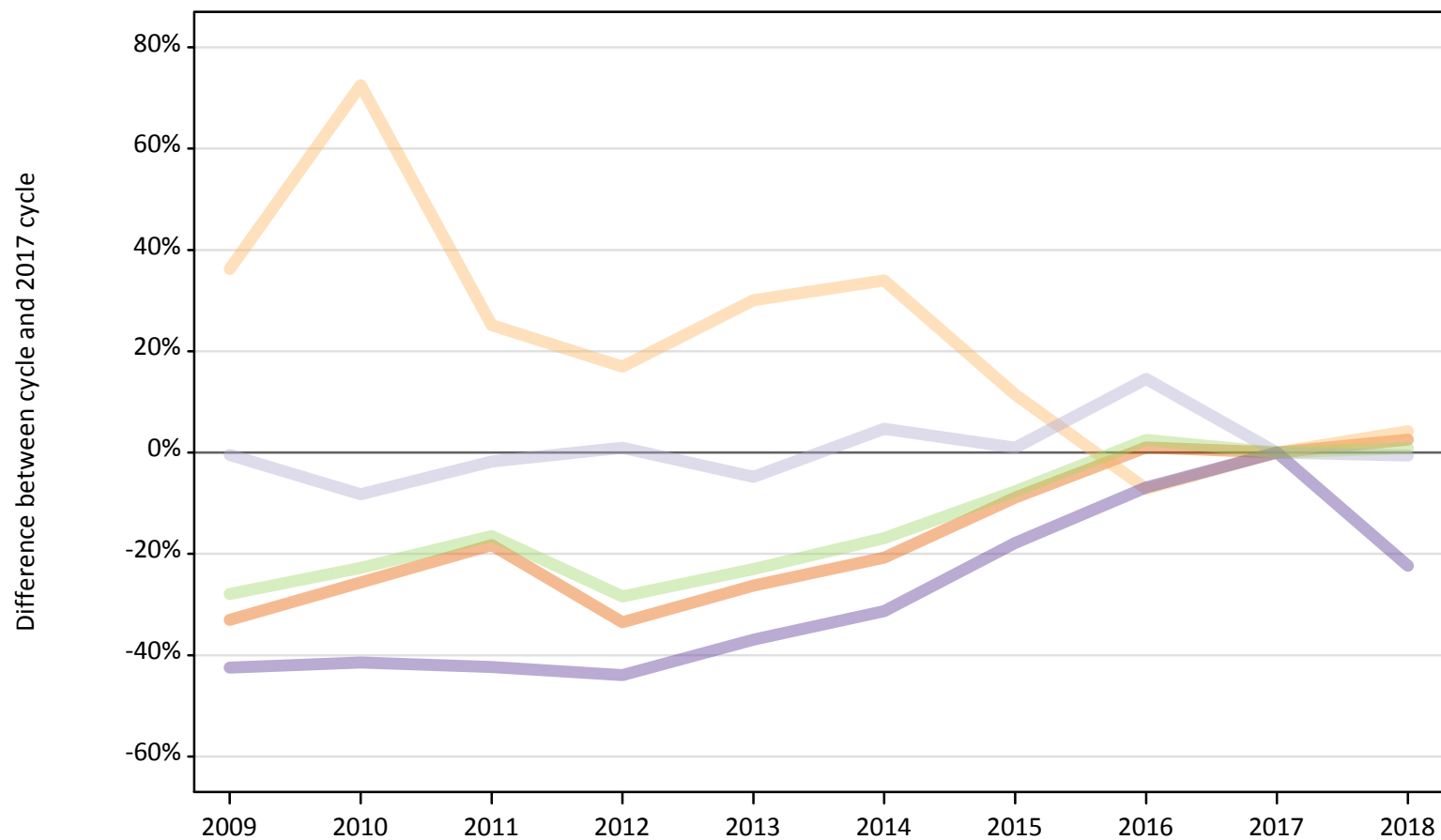
Selected provider countries: difference between cycle and 2017 cycle (at 1 day after A level results day)

Country of provider	2009	2010	2011	2012	2013	2014	2015	2016	2017	2018
England	-34%	-24%	-23%	-14%	-12%	-3%	1%	4%	0%	-2%
Northern Ireland	-17%	-50%	-50%			-58%	-17%	-50%	0%	-17%
Scotland	-2%	-31%	-36%	-20%	-21%	-17%	-20%	2%	0%	8%
Wales	13%	-1%	-4%	-5%	-1%	-1%	0%	3%	0%	-1%
UK	-8%	-11%	-12%	-9%	-6%	-2%	0%	3%	0%	-1%

Note: The percentage change is not recorded in the above table for groups with fewer than 10 placed applicants in that cycle or in the 2017 cycle.

**B.31 Placed applicants at 1 day after A level results day: domiciled in EU (excluding UK)**  
 Selected provider countries: difference between cycle and 2017 cycle (at 1 day after A level results day)

- England
- Northern Ireland
- Scotland
- Wales
- UK



Note: The percentage change is not plotted in the above chart for groups with fewer than 30 placed applicants in any one cycle.

### B.32 Placed applicants at 1 day after A level results day: domiciled in EU (excluding UK)

Placed applicants by provider country (at 1 day after A level results day)

Country of provider	2009	2010	2011	2012	2013	2014	2015	2016	2017	2018
England	14,250	15,820	17,400	14,150	15,690	16,870	19,380	21,490	21,280	21,820
Northern Ireland	420	530	380	360	400	410	340	280	310	320
Scotland	3,910	3,600	3,860	3,970	3,740	4,110	3,970	4,500	3,930	3,900
Wales	750	760	750	730	820	890	1,060	1,210	1,300	1,010
UK	19,320	20,710	22,390	19,200	20,650	22,280	24,750	27,480	26,810	27,050

### B.33 Placed applicants at 1 day after A level results day: domiciled in EU (excluding UK)

Selected provider countries: difference between cycle and 2017 cycle (at 1 day after A level results day)

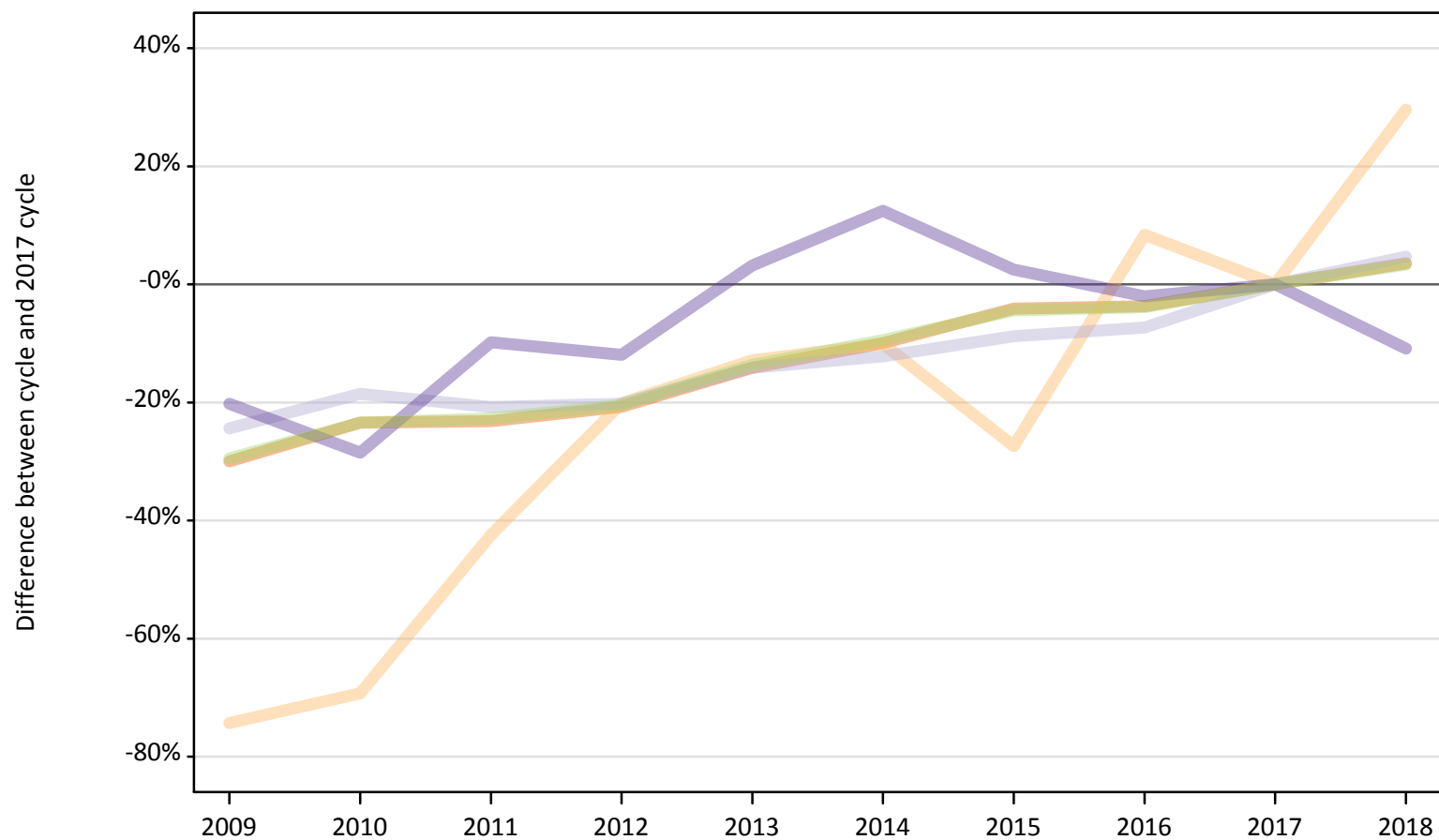
Country of provider	2009	2010	2011	2012	2013	2014	2015	2016	2017	2018
England	-33%	-26%	-18%	-34%	-26%	-21%	-9%	1%	0%	3%
Northern Ireland	36%	73%	25%	17%	30%	34%	11%	-7%	0%	4%
Scotland	-0%	-8%	-2%	1%	-5%	5%	1%	15%	0%	-1%
Wales	-42%	-41%	-42%	-44%	-37%	-31%	-18%	-7%	0%	-22%
UK	-28%	-23%	-16%	-28%	-23%	-17%	-8%	3%	0%	1%

Note: The percentage change is not recorded in the above table for groups with fewer than 10 placed applicants in that cycle or in the 2017 cycle.

### B.34 Placed applicants at 1 day after A level results day: domiciled in Not EU

Selected provider countries: difference between cycle and 2017 cycle (at 1 day after A level results day)

- England
- Northern Ireland
- Scotland
- Wales
- UK



Note: The percentage change is not plotted in the above chart for groups with fewer than 30 placed applicants in any one cycle.

### B.35 Placed applicants at 1 day after A level results day: domiciled in Not EU

Placed applicants by provider country (at 1 day after A level results day)

Country of provider	2009	2010	2011	2012	2013	2014	2015	2016	2017	2018
England	19,370	21,180	21,240	21,920	23,740	24,910	26,520	26,630	27,650	28,640
Northern Ireland	50	60	100	140	160	160	130	190	180	230
Scotland	1,980	2,130	2,070	2,080	2,240	2,290	2,380	2,420	2,610	2,730
Wales	740	670	840	820	960	1,050	950	910	930	830
UK	22,130	24,030	24,250	24,960	27,100	28,410	29,980	30,160	31,380	32,430

### B.36 Placed applicants at 1 day after A level results day: domiciled in Not EU

Selected provider countries: difference between cycle and 2017 cycle (at 1 day after A level results day)

Country of provider	2009	2010	2011	2012	2013	2014	2015	2016	2017	2018
England	-30%	-23%	-23%	-21%	-14%	-10%	-4%	-4%	0%	4%
Northern Ireland	-74%	-69%	-42%	-20%	-13%	-10%	-27%	8%	0%	30%
Scotland	-24%	-19%	-21%	-20%	-14%	-12%	-9%	-7%	0%	5%
Wales	-20%	-28%	-10%	-12%	3%	12%	2%	-2%	0%	-11%
UK	-29%	-23%	-23%	-20%	-14%	-9%	-4%	-4%	0%	3%

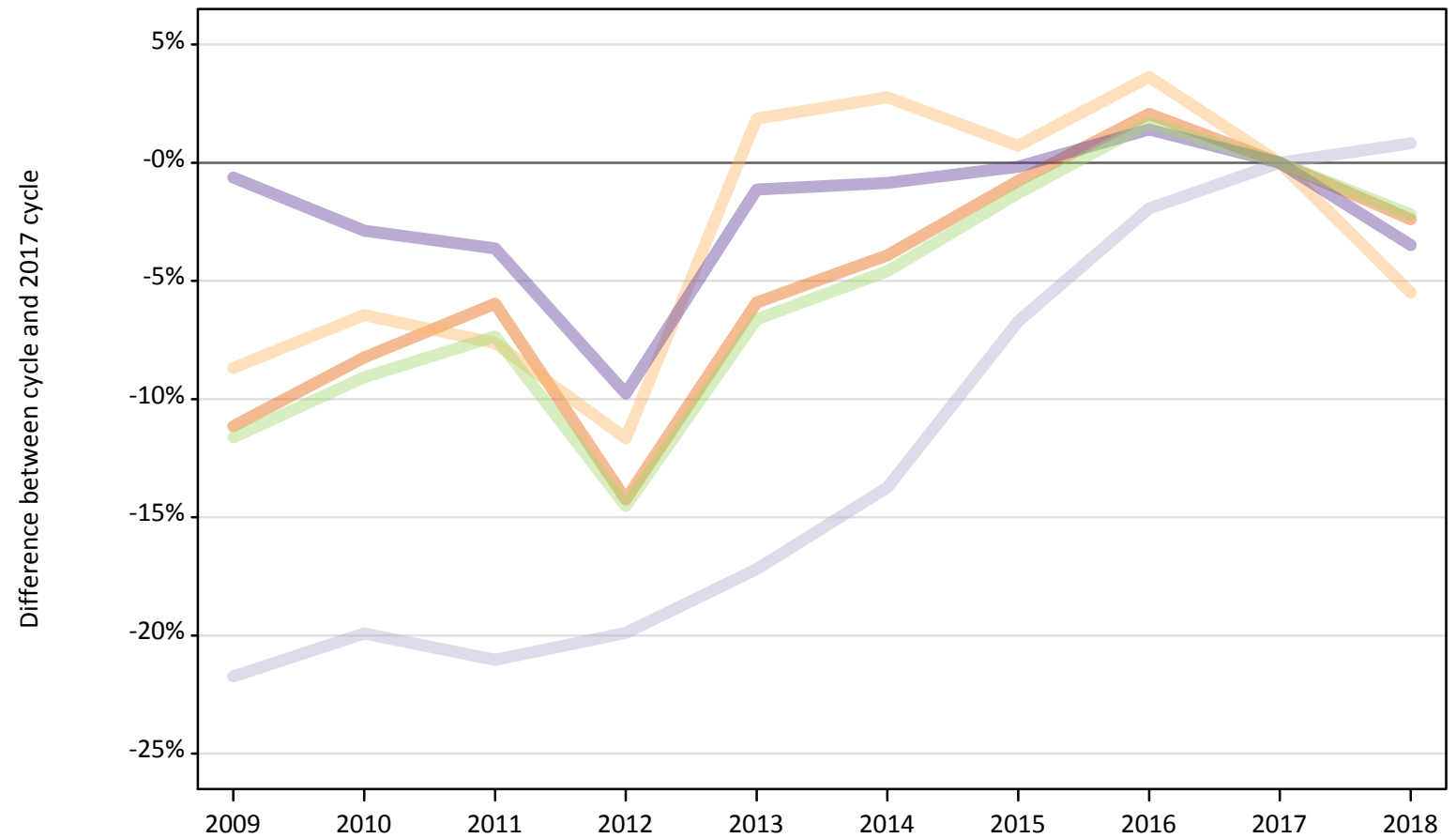
Note: The percentage change is not recorded in the above table for groups with fewer than 10 placed applicants in that cycle or in the 2017 cycle.



### B.37 Placed applicants at 1 day after A level results day: domiciled in UK

Selected provider countries: difference between cycle and 2017 cycle (at 1 day after A level results day)

- England
- Northern Ireland
- Scotland
- Wales
- UK



Note: The percentage change is not plotted in the above chart for groups with fewer than 30 placed applicants in any one cycle.

**B.38 Placed applicants at 1 day after A level results day: domiciled in UK**

Placed applicants by provider country (at 1 day after A level results day)

Country of provider	2009	2010	2011	2012	2013	2014	2015	2016	2017	2018
England	280,230	289,440	296,610	270,480	296,760	303,050	313,010	321,930	315,420	307,880
Northern Ireland	7,110	7,290	7,190	6,880	7,930	8,000	7,840	8,070	7,790	7,360
Scotland	29,000	29,670	29,250	29,680	30,670	31,960	34,560	36,330	37,040	37,350
Wales	18,530	18,110	17,970	16,820	18,430	18,480	18,610	18,910	18,640	17,990
UK	334,870	344,500	351,030	323,860	353,800	361,490	374,020	385,230	378,890	370,580

**B.39 Placed applicants at 1 day after A level results day: domiciled in UK**

Selected provider countries: difference between cycle and 2017 cycle (at 1 day after A level results day)

Country of provider	2009	2010	2011	2012	2013	2014	2015	2016	2017	2018
England	-11%	-8%	-6%	-14%	-6%	-4%	-1%	2%	0%	-2%
Northern Ireland	-9%	-6%	-8%	-12%	2%	3%	1%	4%	0%	-5%
Scotland	-22%	-20%	-21%	-20%	-17%	-14%	-7%	-2%	0%	1%
Wales	-1%	-3%	-4%	-10%	-1%	-1%	-0%	1%	0%	-3%
UK	-12%	-9%	-7%	-15%	-7%	-5%	-1%	2%	0%	-2%

Note: The percentage change is not recorded in the above table for groups with fewer than 10 placed applicants in that cycle or in the 2017 cycle.