

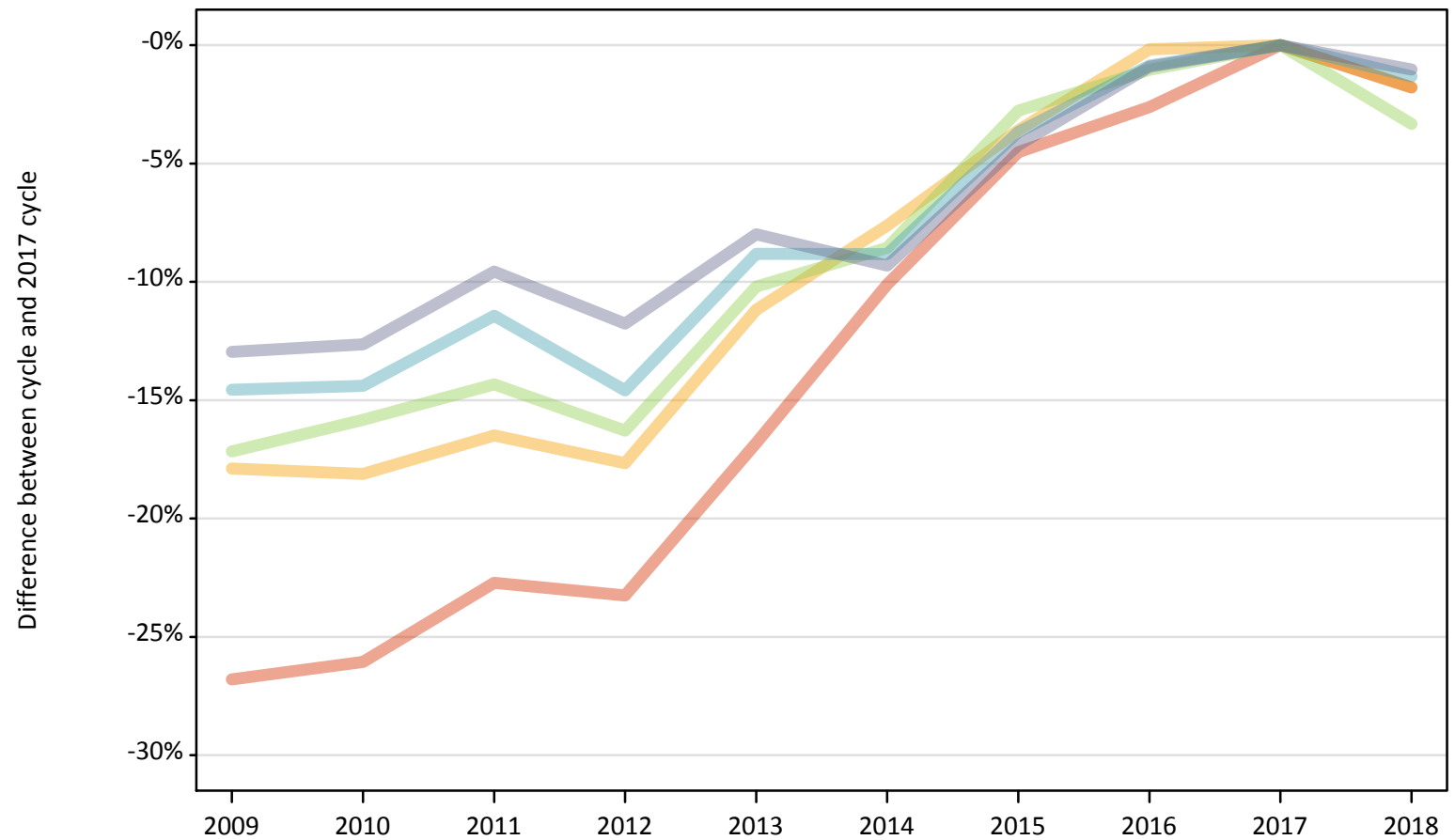
Daily Clearing Analysis: POLAR4

Analysis at 00:05 on Friday 17 August 2018 (1 day after A level results day)

P.1 Placed 18 year old applicants from England by POLAR4 quintile: 1 day after A level results day

Placed 18 year old applicants: change relative to 2017 cycle totals

- Quintile 1
- Quintile 2
- Quintile 3
- Quintile 4
- Quintile 5



Note: The percentage change is not plotted in the above chart for groups with fewer than 30 placed applicants in any one cycle.

P.2 Placed 18 year old applicants from England by POLAR4 quintile: 1 day after A level results day

Applicant Status	POLAR4	2009	2010	2011	2012	2013	2014	2015	2016	2017	2018
Placed	Quintile 1	14,640	14,790	15,460	15,350	16,640	17,980	19,090	19,480	20,000	19,640
	Quintile 2	22,840	22,780	23,230	22,900	24,700	25,690	26,810	27,770	27,810	27,320
	Quintile 3	28,360	28,820	29,330	28,660	30,750	31,310	33,290	33,880	34,240	33,100
	Quintile 4	35,570	35,640	36,870	35,560	37,960	37,950	40,110	41,270	41,630	41,080
	Quintile 5	51,760	51,950	53,780	52,480	54,720	53,930	56,970	58,930	59,480	58,870

P.3 Placed 18 year old applicants from England by POLAR4 quintile: 1 day after A level results day

Placed 18 year old applicants: change relative to 2017 cycle totals

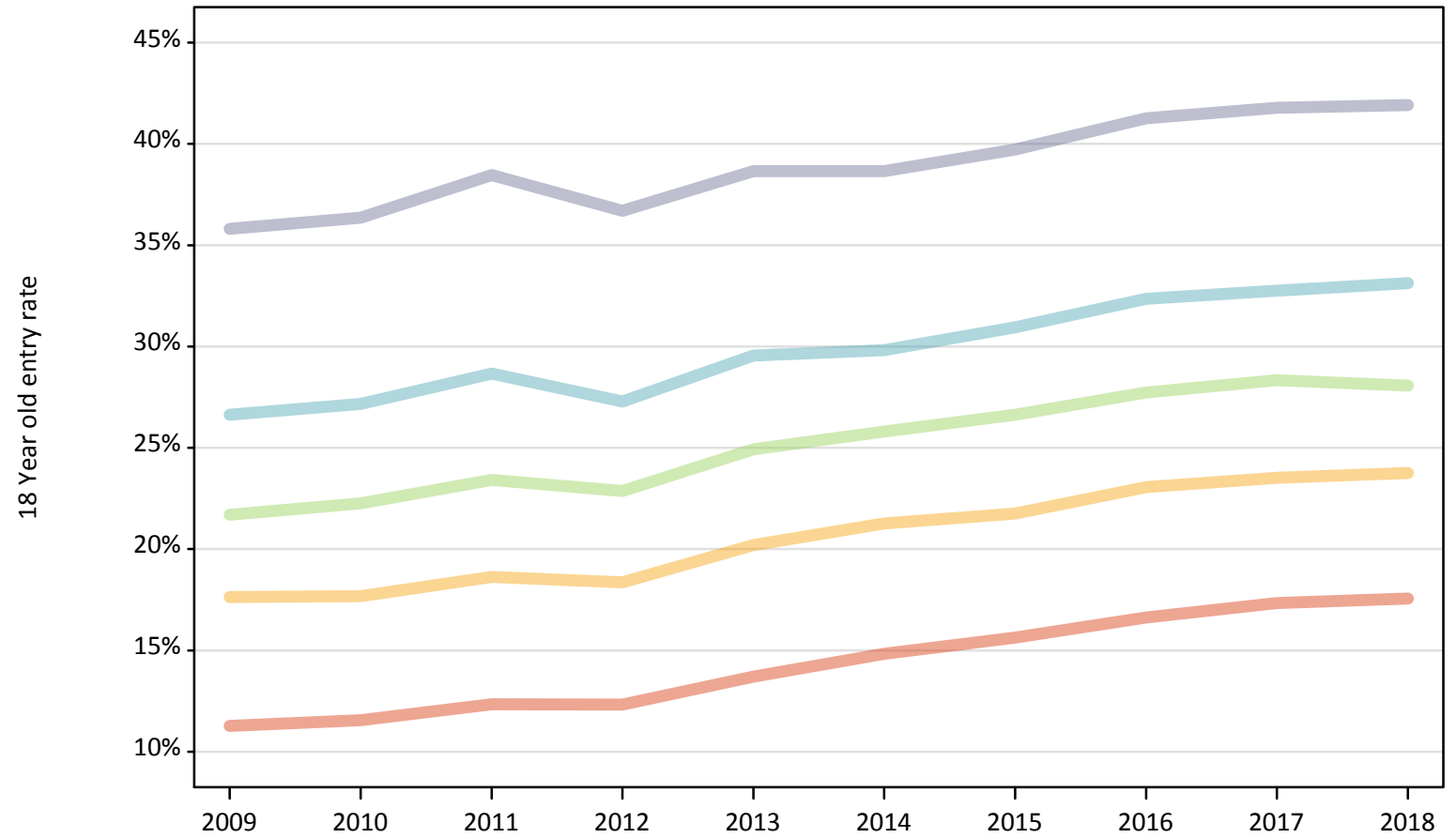
Applicant Status	POLAR4	2009	2010	2011	2012	2013	2014	2015	2016	2017	2018
Placed	Quintile 1	-27%	-26%	-23%	-23%	-17%	-10%	-5%	-3%	0%	-2%
	Quintile 2	-18%	-18%	-16%	-18%	-11%	-8%	-4%	-0%	0%	-2%
	Quintile 3	-17%	-16%	-14%	-16%	-10%	-9%	-3%	-1%	0%	-3%
	Quintile 4	-15%	-14%	-11%	-15%	-9%	-9%	-4%	-1%	0%	-1%
	Quintile 5	-13%	-13%	-10%	-12%	-8%	-9%	-4%	-1%	0%	-1%

Note: The percentage change is not recorded in the above table for groups with fewer than 10 placed applicants in that cycle or in the 2017 cycle.

P.4 Placed 18 year old applicants from England by POLAR4 quintile: 1 day after A level results day

Placed 18 year old applicants: entry rate

- Quintile 1
- Quintile 2
- Quintile 3
- Quintile 4
- Quintile 5



P.5 Placed 18 year old applicants from England by POLAR4 quintile: 1 day after A level results day

Placed 18 year old applicants: entry rate

Applicant Status	POLAR4	2009	2010	2011	2012	2013	2014	2015	2016	2017	2018
Placed	Quintile 1	11.3%	11.6%	12.3%	12.3%	13.7%	14.8%	15.6%	16.6%	17.3%	17.6%
	Quintile 2	17.6%	17.7%	18.6%	18.4%	20.2%	21.3%	21.8%	23.1%	23.5%	23.8%
	Quintile 3	21.7%	22.3%	23.4%	22.9%	24.9%	25.8%	26.6%	27.7%	28.3%	28.1%
	Quintile 4	26.6%	27.2%	28.7%	27.3%	29.6%	29.8%	31.0%	32.4%	32.8%	33.1%
	Quintile 5	35.8%	36.4%	38.5%	36.7%	38.7%	38.7%	39.7%	41.3%	41.8%	41.9%

P.6 Placed 18 year old applicants from England by POLAR4 quintile: 1 day after A level results day

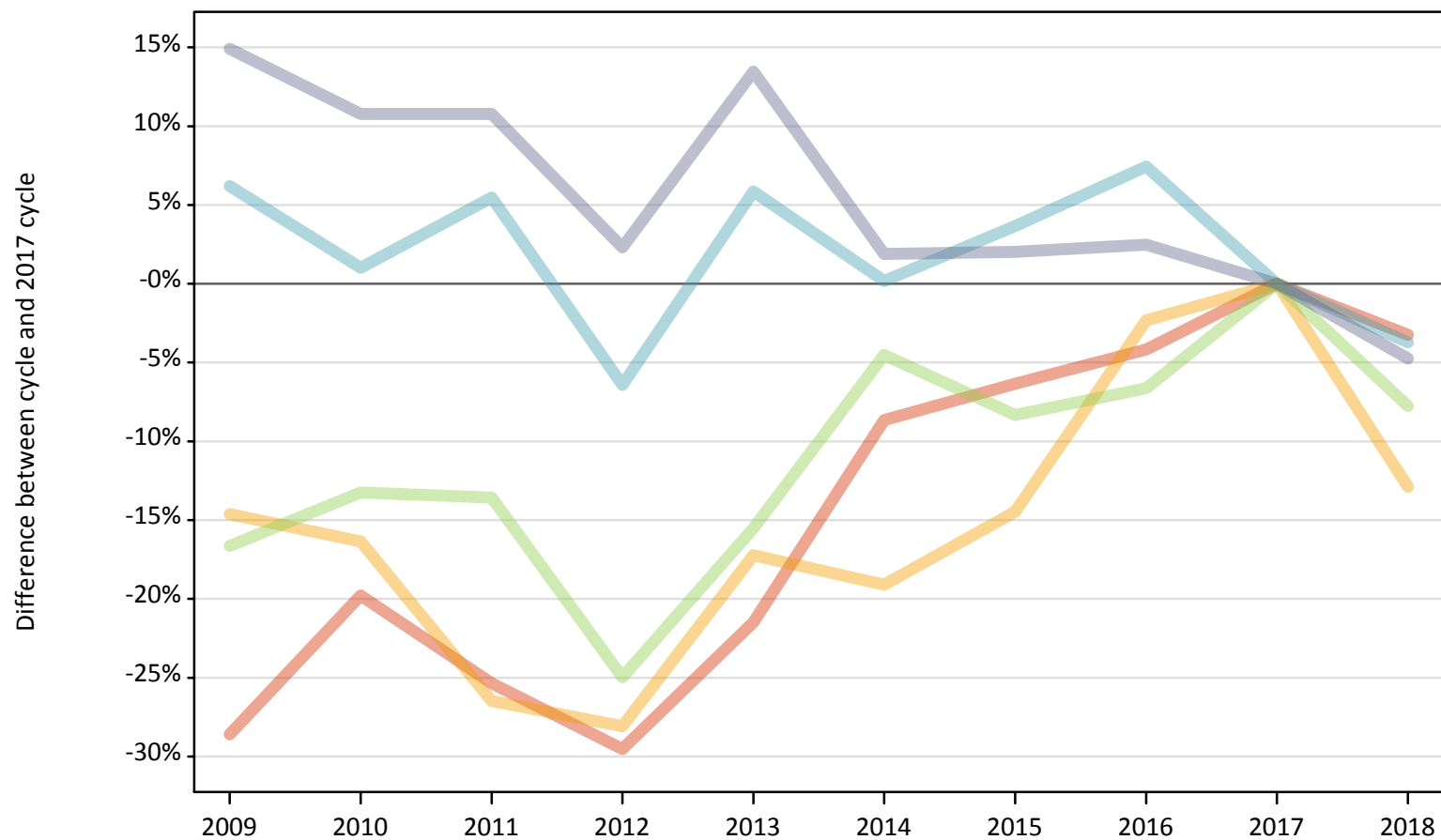
Placed 18 year old applicants: entry rate (indexed to 100 = Quintile 1)

Applicant Status	POLAR4	2009	2010	2011	2012	2013	2014	2015	2016	2017	2018
Placed	Quintile 1	100	100	100	100	100	100	100	100	100	100
	Quintile 2	156	153	151	149	147	143	139	139	136	135
	Quintile 3	192	193	190	185	182	174	170	167	163	160
	Quintile 4	236	235	232	221	216	201	198	195	189	189
	Quintile 5	317	314	312	298	282	261	254	248	241	239

P.7 Placed 18 year old applicants from Northern Ireland by POLAR4 quintile: 1 day after A level results day

Placed 18 year old applicants: change relative to 2017 cycle totals

- Quintile 1
- Quintile 2
- Quintile 3
- Quintile 4
- Quintile 5



Note: The percentage change is not plotted in the above chart for groups with fewer than 30 placed applicants in any one cycle.

P.8 Placed 18 year old applicants from Northern Ireland by POLAR4 quintile: 1 day after A level results day

Applicant Status	POLAR4	2009	2010	2011	2012	2013	2014	2015	2016	2017	2018
Placed	Quintile 1	460	520	480	460	510	590	610	620	650	630
	Quintile 2	590	580	510	500	570	560	590	680	690	600
	Quintile 3	1,030	1,070	1,070	930	1,050	1,180	1,140	1,160	1,240	1,140
	Quintile 4	1,890	1,790	1,870	1,660	1,880	1,780	1,840	1,910	1,780	1,710
	Quintile 5	3,340	3,220	3,220	2,970	3,300	2,960	2,960	2,980	2,900	2,770

P.9 Placed 18 year old applicants from Northern Ireland by POLAR4 quintile: 1 day after A level results day

Placed 18 year old applicants: change relative to 2017 cycle totals

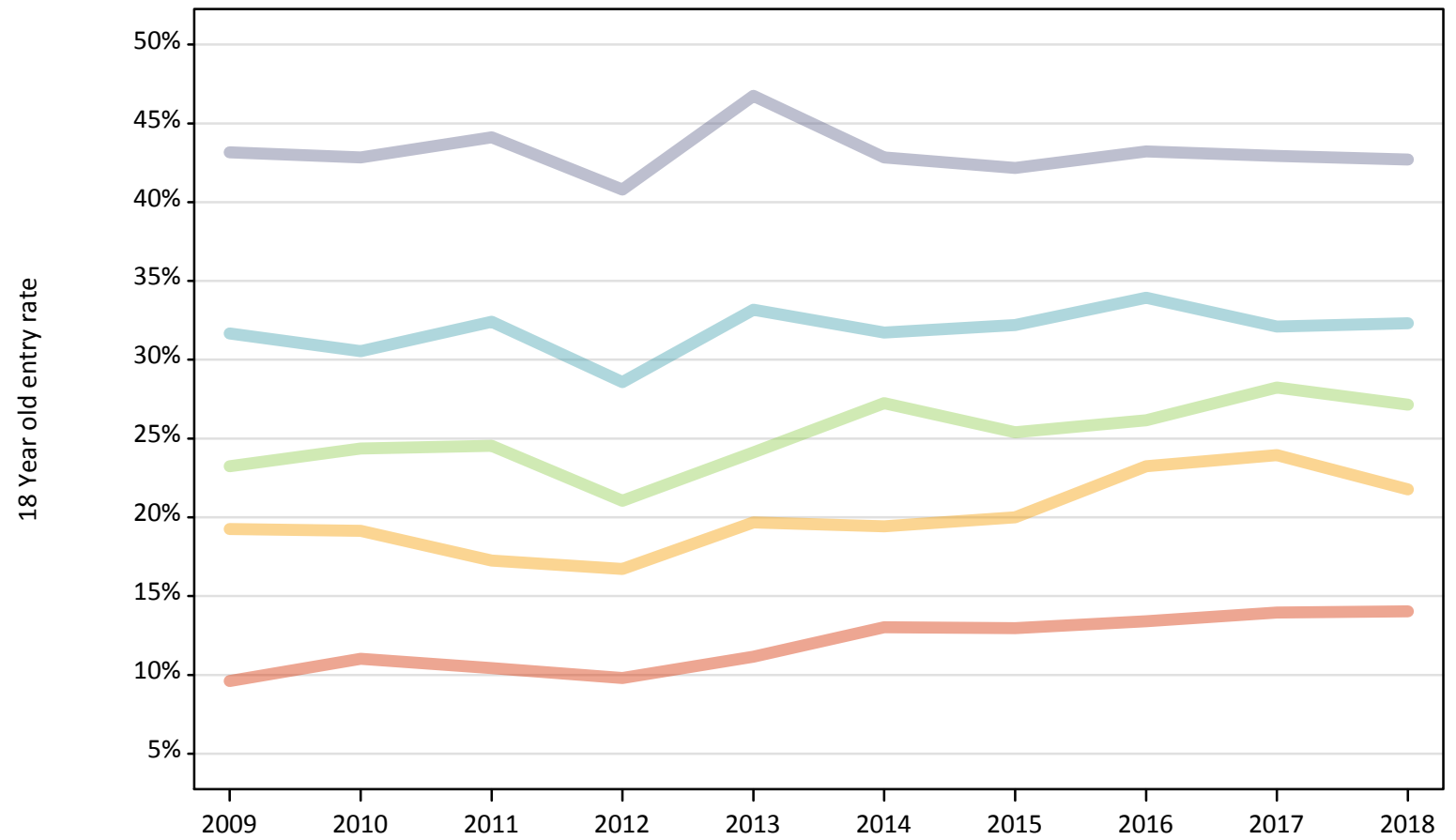
Applicant Status	POLAR4	2009	2010	2011	2012	2013	2014	2015	2016	2017	2018
Placed	Quintile 1	-29%	-20%	-25%	-30%	-21%	-9%	-6%	-4%	0%	-3%
	Quintile 2	-15%	-16%	-26%	-28%	-17%	-19%	-14%	-2%	0%	-13%
	Quintile 3	-17%	-13%	-14%	-25%	-16%	-5%	-8%	-7%	0%	-8%
	Quintile 4	6%	1%	5%	-6%	6%	0%	4%	7%	0%	-4%
	Quintile 5	15%	11%	11%	2%	13%	2%	2%	2%	0%	-5%

Note: The percentage change is not recorded in the above table for groups with fewer than 10 placed applicants in that cycle or in the 2017 cycle.

P.10 Placed 18 year old applicants from Northern Ireland by POLAR4 quintile: 1 day after A level results day

Placed 18 year old applicants: entry rate

- Quintile 1
- Quintile 2
- Quintile 3
- Quintile 4
- Quintile 5



P.11 Placed 18 year old applicants from Northern Ireland by POLAR4 quintile: 1 day after A level results day

Placed 18 year old applicants: entry rate

Applicant Status	POLAR4	2009	2010	2011	2012	2013	2014	2015	2016	2017	2018
Placed	Quintile 1	9.6%	11.0%	10.4%	9.8%	11.2%	13.0%	13.0%	13.4%	14.0%	14.0%
	Quintile 2	19.3%	19.2%	17.3%	16.7%	19.7%	19.4%	20.0%	23.2%	23.9%	21.8%
	Quintile 3	23.2%	24.4%	24.5%	21.0%	24.1%	27.2%	25.4%	26.2%	28.2%	27.2%
	Quintile 4	31.7%	30.5%	32.4%	28.6%	33.2%	31.7%	32.2%	33.9%	32.1%	32.3%
	Quintile 5	43.2%	42.8%	44.1%	40.8%	46.7%	42.8%	42.2%	43.2%	42.9%	42.7%

P.12 Placed 18 year old applicants from Northern Ireland by POLAR4 quintile: 1 day after A level results day

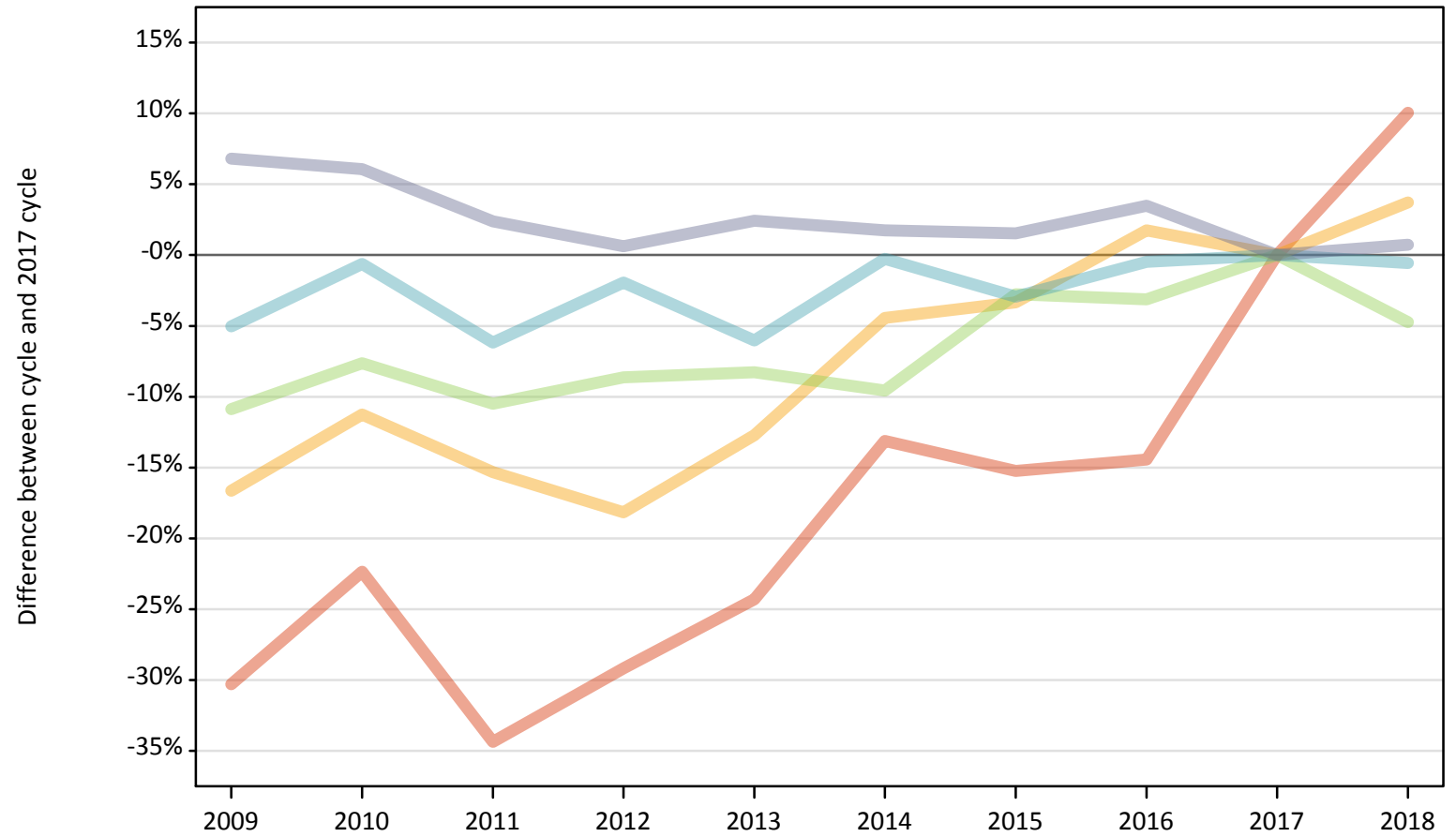
Placed 18 year old applicants: entry rate (indexed to 100 = Quintile 1)

Applicant Status	POLAR4	2009	2010	2011	2012	2013	2014	2015	2016	2017	2018
Placed	Quintile 1	100	100	100	100	100	100	100	100	100	100
	Quintile 2	200	174	165	171	176	149	154	173	172	155
	Quintile 3	242	221	235	215	216	209	196	195	202	194
	Quintile 4	330	277	311	292	297	244	248	253	230	230
	Quintile 5	449	389	423	416	419	329	325	322	308	304

P.13 Placed 18 year old applicants from Scotland by POLAR4 quintile: 1 day after A level results day

Placed 18 year old applicants: change relative to 2017 cycle totals

- Quintile 1
- Quintile 2
- Quintile 3
- Quintile 4
- Quintile 5



Note: The percentage change is not plotted in the above chart for groups with fewer than 30 placed applicants in any one cycle.

P.14 Placed 18 year old applicants from Scotland by POLAR4 quintile: 1 day after A level results day

Applicant Status	POLAR4	2009	2010	2011	2012	2013	2014	2015	2016	2017	2018
Placed	Quintile 1	430	480	410	440	470	540	520	530	620	680
	Quintile 2	1,150	1,220	1,170	1,130	1,200	1,320	1,330	1,400	1,380	1,430
	Quintile 3	2,090	2,160	2,100	2,140	2,150	2,120	2,280	2,270	2,340	2,230
	Quintile 4	3,170	3,320	3,130	3,270	3,140	3,330	3,240	3,320	3,340	3,320
	Quintile 5	7,120	7,070	6,830	6,710	6,830	6,790	6,770	6,900	6,670	6,720

P.15 Placed 18 year old applicants from Scotland by POLAR4 quintile: 1 day after A level results day

Placed 18 year old applicants: change relative to 2017 cycle totals

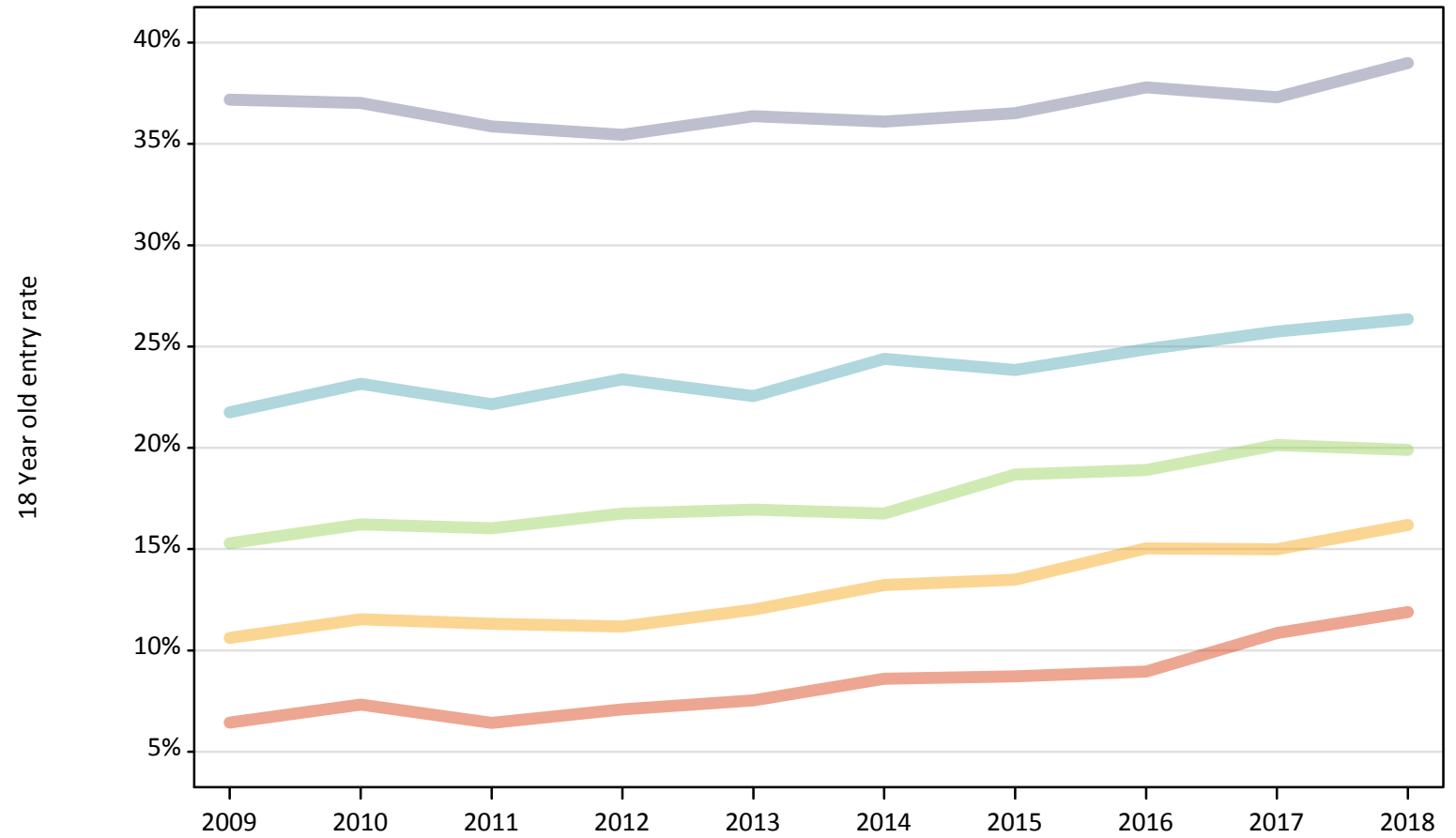
Applicant Status	POLAR4	2009	2010	2011	2012	2013	2014	2015	2016	2017	2018
Placed	Quintile 1	-30%	-22%	-34%	-29%	-24%	-13%	-15%	-14%	0%	10%
	Quintile 2	-17%	-11%	-15%	-18%	-13%	-4%	-3%	2%	0%	4%
	Quintile 3	-11%	-8%	-10%	-9%	-8%	-10%	-3%	-3%	0%	-5%
	Quintile 4	-5%	-1%	-6%	-2%	-6%	-0%	-3%	-0%	0%	-1%
	Quintile 5	7%	6%	2%	1%	2%	2%	2%	3%	0%	1%

Note: The percentage change is not recorded in the above table for groups with fewer than 10 placed applicants in that cycle or in the 2017 cycle.

P.16 Placed 18 year old applicants from Scotland by POLAR4 quintile: 1 day after A level results day

Placed 18 year old applicants: entry rate

- Quintile 1
- Quintile 2
- Quintile 3
- Quintile 4
- Quintile 5



P.17 Placed 18 year old applicants from Scotland by POLAR4 quintile: 1 day after A level results day

Placed 18 year old applicants: entry rate

Applicant Status	POLAR4	2009	2010	2011	2012	2013	2014	2015	2016	2017	2018
Placed	Quintile 1	6.4%	7.3%	6.4%	7.1%	7.5%	8.6%	8.7%	9.0%	10.8%	11.9%
	Quintile 2	10.6%	11.5%	11.3%	11.2%	12.0%	13.2%	13.5%	15.0%	15.0%	16.2%
	Quintile 3	15.3%	16.2%	16.0%	16.8%	16.9%	16.8%	18.7%	18.9%	20.1%	19.9%
	Quintile 4	21.7%	23.2%	22.2%	23.4%	22.6%	24.4%	23.8%	24.9%	25.7%	26.3%
	Quintile 5	37.2%	37.0%	35.9%	35.5%	36.4%	36.1%	36.5%	37.8%	37.3%	39.0%

P.18 Placed 18 year old applicants from Scotland by POLAR4 quintile: 1 day after A level results day

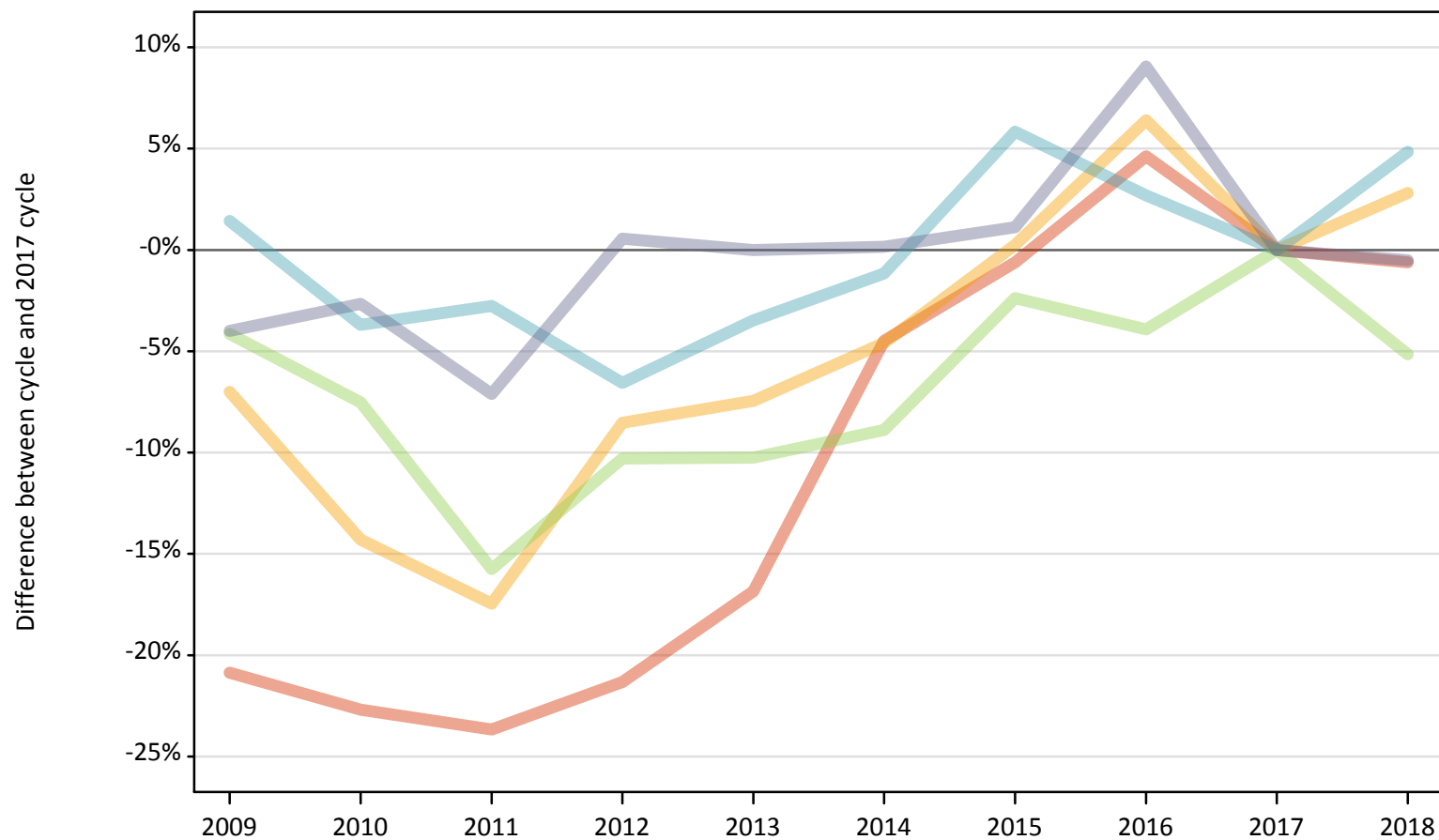
Placed 18 year old applicants: entry rate (indexed to 100 = Quintile 1)

Applicant Status	POLAR4	2009	2010	2011	2012	2013	2014	2015	2016	2017	2018
Placed	Quintile 1	100	100	100	100	100	100	100	100	100	100
	Quintile 2	165	157	176	158	159	154	155	168	138	136
	Quintile 3	237	221	249	236	225	195	214	211	186	167
	Quintile 4	337	316	345	330	300	283	274	277	237	222
	Quintile 5	577	505	558	500	483	419	419	422	344	328

P.19 Placed 18 year old applicants from Wales by POLAR4 quintile: 1 day after A level results day

Placed 18 year old applicants: change relative to 2017 cycle totals

- Quintile 1
- Quintile 2
- Quintile 3
- Quintile 4
- Quintile 5



Note: The percentage change is not plotted in the above chart for groups with fewer than 30 placed applicants in any one cycle.

P.20 Placed 18 year old applicants from Wales by POLAR4 quintile: 1 day after A level results day

Applicant Status	POLAR4	2009	2010	2011	2012	2013	2014	2015	2016	2017	2018
Placed	Quintile 1	1,040	1,020	1,010	1,040	1,100	1,260	1,310	1,380	1,320	1,310
	Quintile 2	1,890	1,740	1,680	1,860	1,880	1,940	2,030	2,160	2,030	2,090
	Quintile 3	2,180	2,100	1,920	2,040	2,040	2,070	2,220	2,190	2,270	2,160
	Quintile 4	1,840	1,750	1,770	1,700	1,750	1,790	1,920	1,860	1,820	1,900
	Quintile 5	1,880	1,900	1,820	1,970	1,960	1,960	1,980	2,130	1,960	1,950

P.21 Placed 18 year old applicants from Wales by POLAR4 quintile: 1 day after A level results day

Placed 18 year old applicants: change relative to 2017 cycle totals

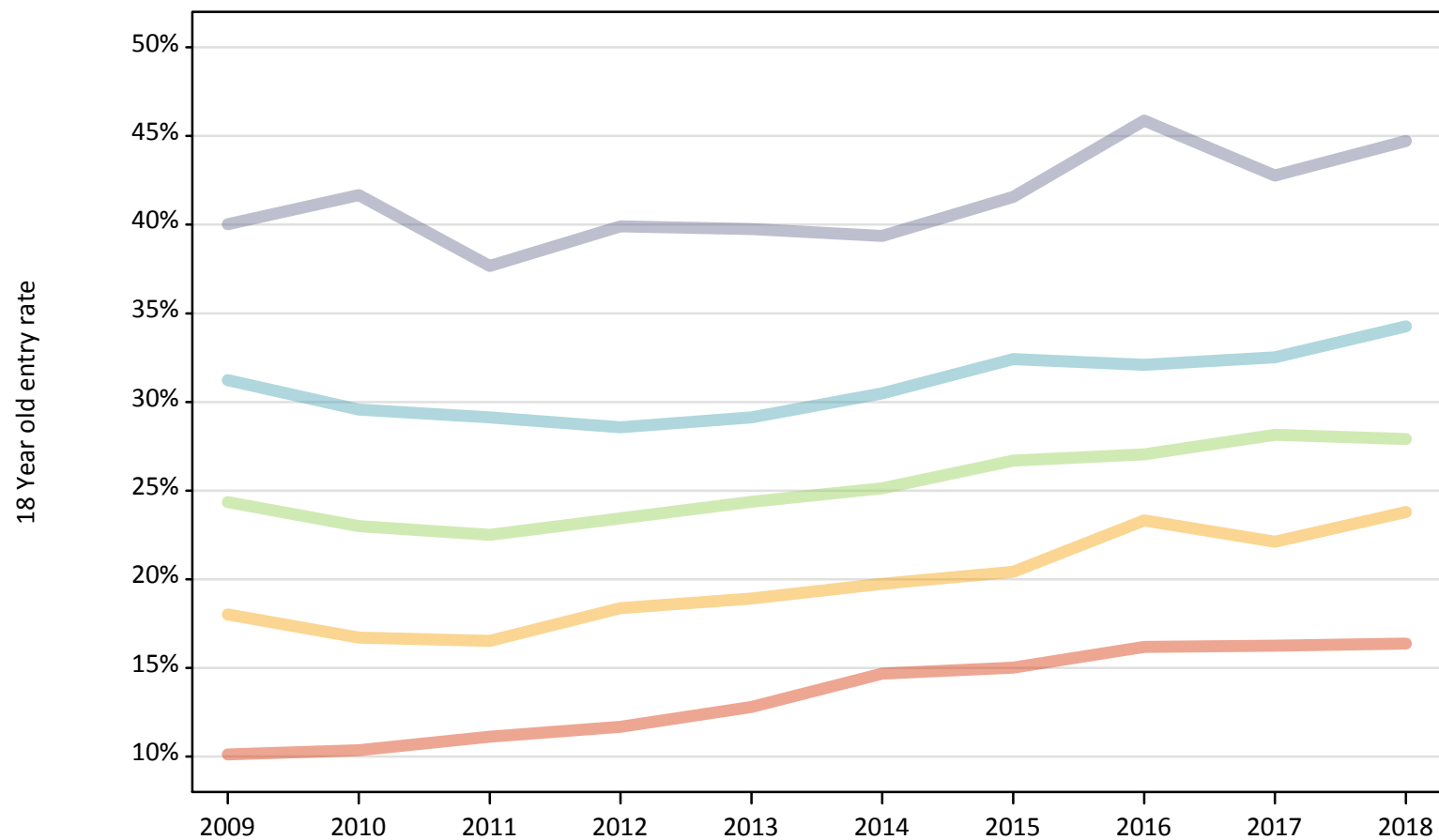
Applicant Status	POLAR4	2009	2010	2011	2012	2013	2014	2015	2016	2017	2018
Placed	Quintile 1	-21%	-23%	-24%	-21%	-17%	-4%	-1%	5%	0%	-1%
	Quintile 2	-7%	-14%	-17%	-9%	-7%	-5%	0%	6%	0%	3%
	Quintile 3	-4%	-8%	-16%	-10%	-10%	-9%	-2%	-4%	0%	-5%
	Quintile 4	1%	-4%	-3%	-7%	-3%	-1%	6%	3%	0%	5%
	Quintile 5	-4%	-3%	-7%	1%	0%	0%	1%	9%	0%	-1%

Note: The percentage change is not recorded in the above table for groups with fewer than 10 placed applicants in that cycle or in the 2017 cycle.

P.22 Placed 18 year old applicants from Wales by POLAR4 quintile: 1 day after A level results day

Placed 18 year old applicants: entry rate

- Quintile 1
- Quintile 2
- Quintile 3
- Quintile 4
- Quintile 5



P.23 Placed 18 year old applicants from Wales by POLAR4 quintile: 1 day after A level results day

Placed 18 year old applicants: entry rate

Applicant Status	POLAR4	2009	2010	2011	2012	2013	2014	2015	2016	2017	2018
Placed	Quintile 1	10.1%	10.4%	11.1%	11.7%	12.8%	14.7%	15.0%	16.2%	16.2%	16.4%
	Quintile 2	18.0%	16.7%	16.5%	18.4%	18.9%	19.7%	20.4%	23.3%	22.1%	23.8%
	Quintile 3	24.4%	23.0%	22.5%	23.4%	24.4%	25.1%	26.7%	27.1%	28.1%	27.9%
	Quintile 4	31.2%	29.6%	29.1%	28.6%	29.1%	30.5%	32.4%	32.1%	32.5%	34.3%
	Quintile 5	40.0%	41.7%	37.7%	39.9%	39.8%	39.4%	41.6%	45.9%	42.8%	44.7%

P.24 Placed 18 year old applicants from Wales by POLAR4 quintile: 1 day after A level results day

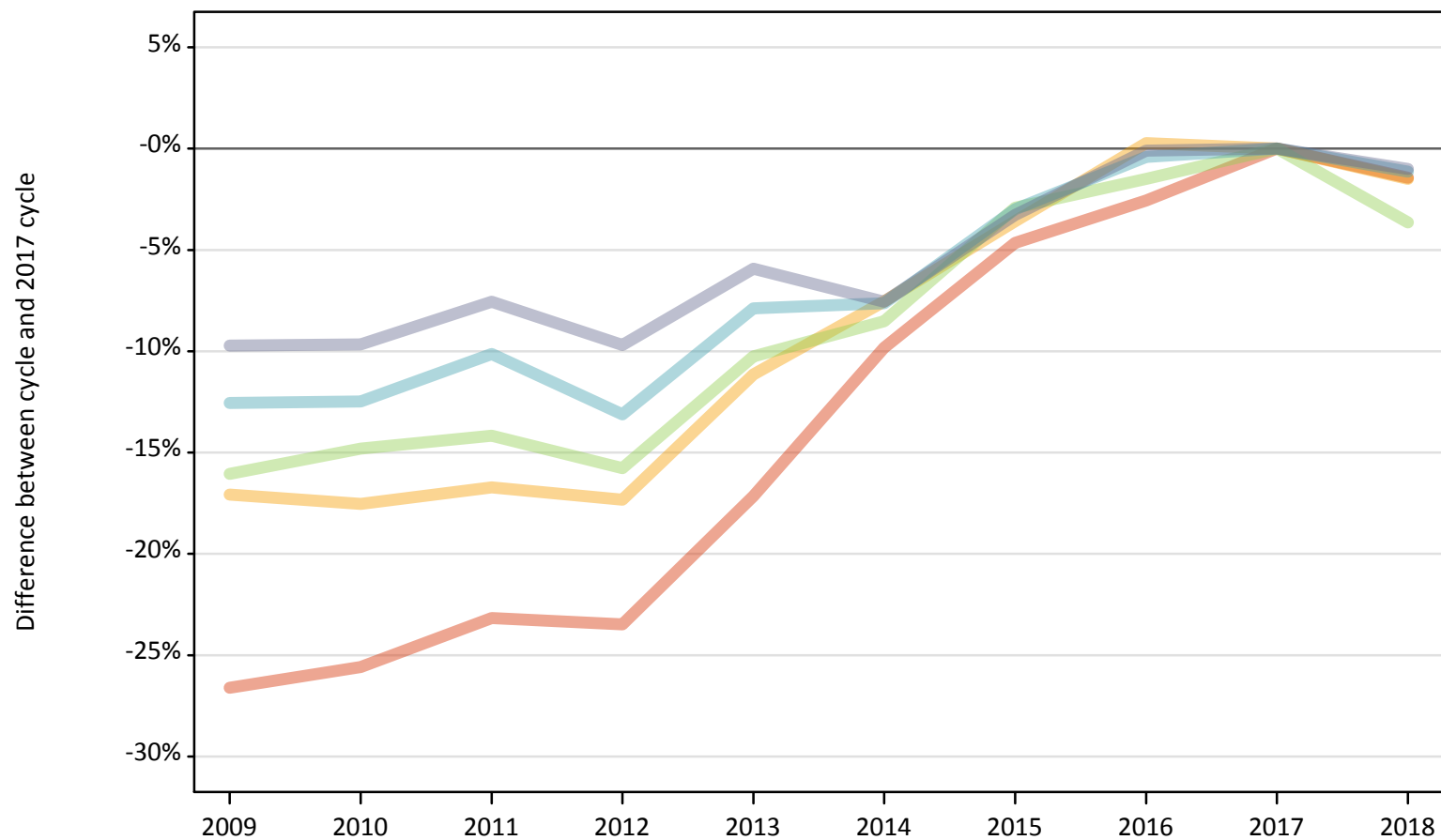
Placed 18 year old applicants: entry rate (indexed to 100 = Quintile 1)

Applicant Status	POLAR4	2009	2010	2011	2012	2013	2014	2015	2016	2017	2018
Placed	Quintile 1	100	100	100	100	100	100	100	100	100	100
	Quintile 2	178	161	149	157	148	134	136	144	136	145
	Quintile 3	241	222	203	201	190	171	178	167	173	170
	Quintile 4	309	285	262	245	228	208	216	198	200	209
	Quintile 5	396	402	339	342	311	268	277	283	263	273

P.25 Placed 18 year old applicants from the UK by POLAR4 quintile: 1 day after A level results day

Placed 18 year old applicants: change relative to 2017 cycle totals

- Quintile 1
- Quintile 2
- Quintile 3
- Quintile 4
- Quintile 5



Note: The percentage change is not plotted in the above chart for groups with fewer than 30 placed applicants in any one cycle.

P.26 Placed 18 year old applicants from the UK by POLAR4 quintile: 1 day after A level results day

Applicant Status	POLAR4	2009	2010	2011	2012	2013	2014	2015	2016	2017	2018
Placed	Quintile 1	16,570	16,800	17,350	17,280	18,710	20,360	21,530	22,000	22,580	22,260
	Quintile 2	26,460	26,310	26,580	26,380	28,350	29,500	30,770	32,000	31,910	31,430
	Quintile 3	33,660	34,160	34,420	33,770	35,980	36,680	38,920	39,490	40,090	38,630
	Quintile 4	42,470	42,500	43,640	42,190	44,730	44,860	47,110	48,370	48,560	48,010
	Quintile 5	64,100	64,150	65,650	64,130	66,800	65,640	68,680	70,940	71,010	70,300

P.27 Placed 18 year old applicants from the UK by POLAR4 quintile: 1 day after A level results day

Placed 18 year old applicants: change relative to 2017 cycle totals

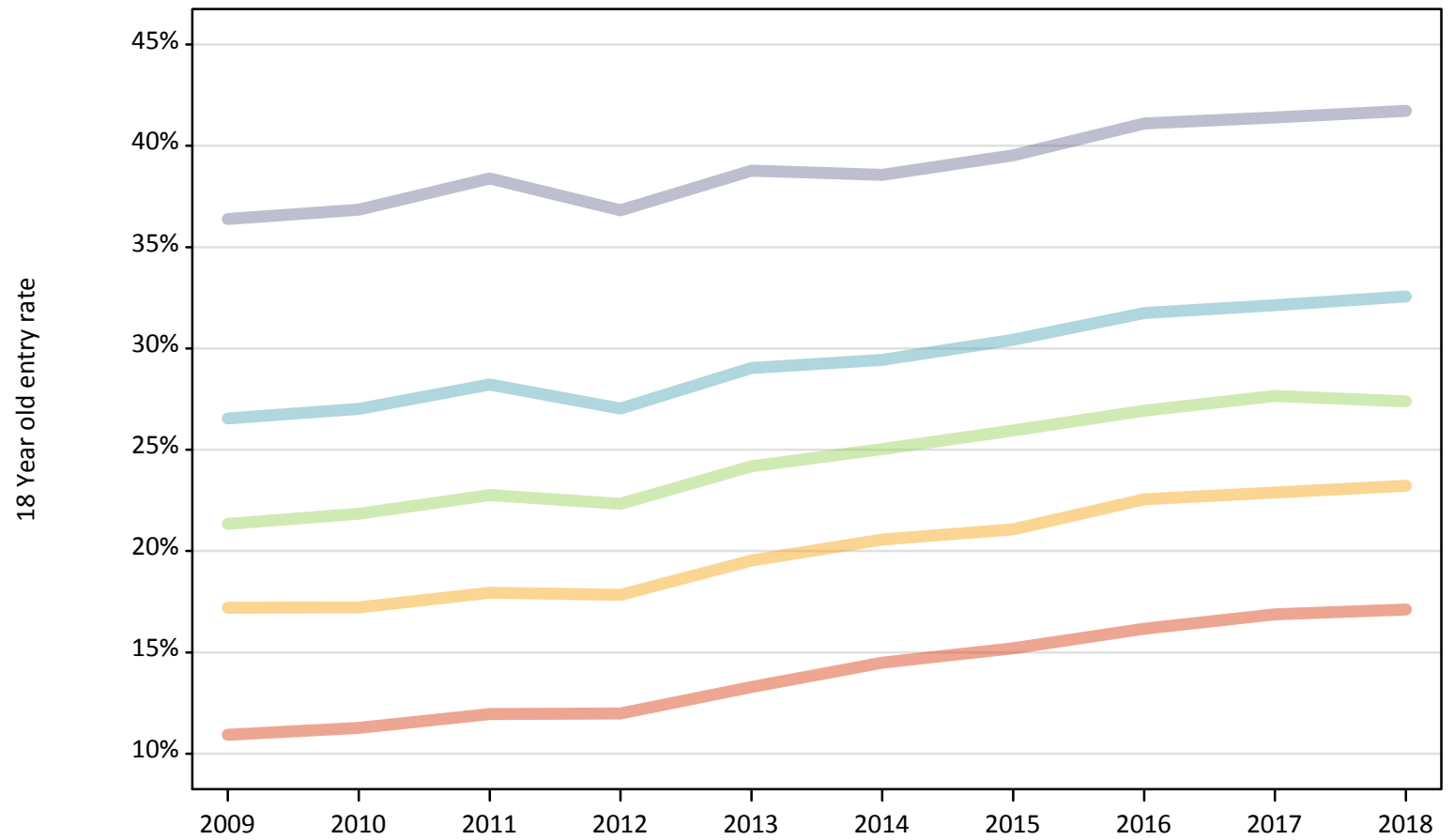
Applicant Status	POLAR4	2009	2010	2011	2012	2013	2014	2015	2016	2017	2018
Placed	Quintile 1	-27%	-26%	-23%	-23%	-17%	-10%	-5%	-3%	0%	-1%
	Quintile 2	-17%	-18%	-17%	-17%	-11%	-8%	-4%	0%	0%	-1%
	Quintile 3	-16%	-15%	-14%	-16%	-10%	-9%	-3%	-1%	0%	-4%
	Quintile 4	-13%	-12%	-10%	-13%	-8%	-8%	-3%	-0%	0%	-1%
	Quintile 5	-10%	-10%	-8%	-10%	-6%	-8%	-3%	-0%	0%	-1%

Note: The percentage change is not recorded in the above table for groups with fewer than 10 placed applicants in that cycle or in the 2017 cycle.

P.28 Placed 18 year old applicants from the UK by POLAR4 quintile: 1 day after A level results day

Placed 18 year old applicants: entry rate

- Quintile 1
- Quintile 2
- Quintile 3
- Quintile 4
- Quintile 5



P.29 Placed 18 year old applicants from the UK by POLAR4 quintile: 1 day after A level results day

Placed 18 year old applicants: entry rate

Applicant Status	POLAR4	2009	2010	2011	2012	2013	2014	2015	2016	2017	2018
Placed	Quintile 1	10.9%	11.3%	12.0%	12.0%	13.3%	14.5%	15.2%	16.2%	16.9%	17.1%
	Quintile 2	17.2%	17.2%	17.9%	17.8%	19.5%	20.6%	21.1%	22.6%	22.9%	23.2%
	Quintile 3	21.3%	21.9%	22.8%	22.3%	24.2%	25.0%	25.9%	26.9%	27.7%	27.4%
	Quintile 4	26.6%	27.0%	28.2%	27.0%	29.0%	29.4%	30.4%	31.7%	32.1%	32.6%
	Quintile 5	36.4%	36.8%	38.4%	36.8%	38.8%	38.6%	39.5%	41.1%	41.4%	41.7%

P.30 Placed 18 year old applicants from the UK by POLAR4 quintile: 1 day after A level results day

Placed 18 year old applicants: entry rate (indexed to 100 = Quintile 1)

Applicant Status	POLAR4	2009	2010	2011	2012	2013	2014	2015	2016	2017	2018
Placed	Quintile 1	100	100	100	100	100	100	100	100	100	100
	Quintile 2	157	153	150	149	147	142	139	140	136	136
	Quintile 3	195	194	190	186	182	173	171	167	164	160
	Quintile 4	243	240	236	226	218	203	200	196	190	190
	Quintile 5	333	327	321	307	292	266	260	254	245	244