

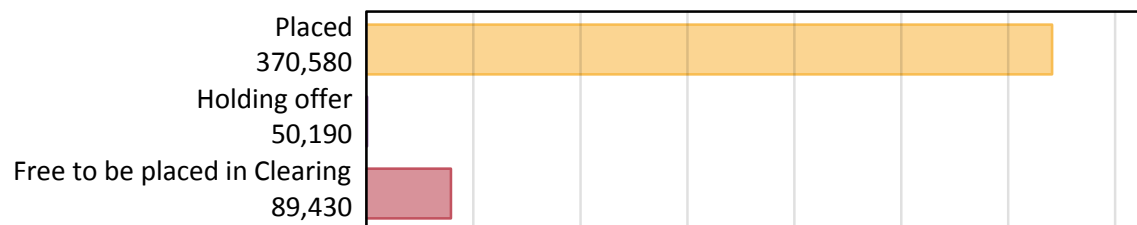
# Daily Clearing Analysis: Overview

Analysis at 00:05 on Friday 17 August 2018 (1 day after A level results day)

## A.1 Applicants by type and status from the UK, 2018 cycle

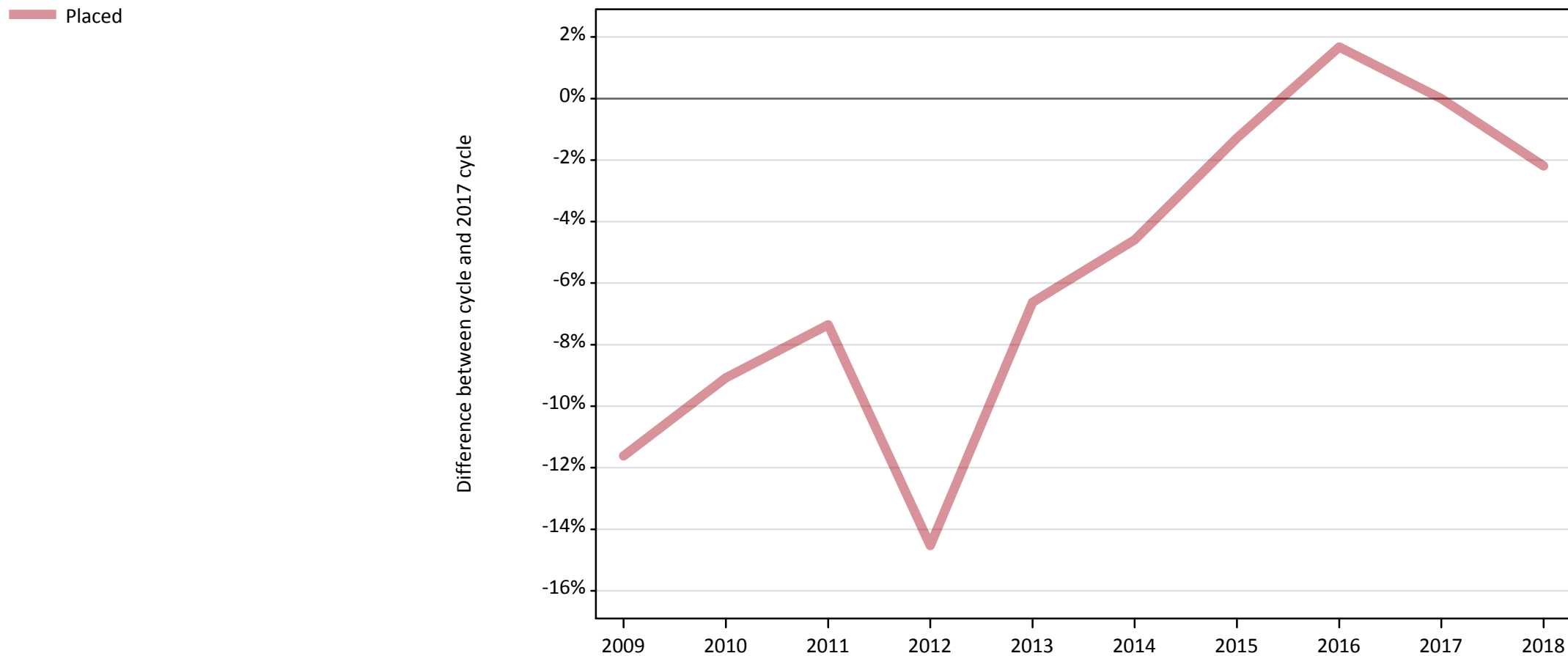
Applicant type	Status	2018
Main scheme	Placed (Clearing)	9,260
	Placed (Adjustment)	330
	Placed (Firm)	320,780
	Placed (Insurance)	26,500
	Placed (Other)	10,040
	Holding offer	50,190
	Free to be placed in Clearing	89,430
Direct to Clearing	Placed (Direct to Clearing)	3,680
	Other (Direct to Clearing)	7,600
All applicants	Placed	370,580

## A.2 Summary of applicants who are placed, holding offers or free to be placed in Clearing ( the UK )



### A.3 All placed applicants from the UK: 1 day after A level results day

All placed applicants: difference between cycle and 2017 cycle



Note: The percentage change is not plotted in the above chart for groups with fewer than 30 placed applicants in any one cycle.

#### A.4 All placed applicants from the UK: 1 day after A level results day

All placed applicants: applicants at 1 day after A level results day

Applicant type	Status	2009	2010	2011	2012	2013	2014	2015	2016	2017	2018
All applicants	Placed	334,870	344,500	351,030	323,860	353,800	361,490	374,020	385,230	378,890	370,580

#### A.5 All placed applicants from the UK: 1 day after A level results day

All placed applicants: difference between cycle and 2017 cycle

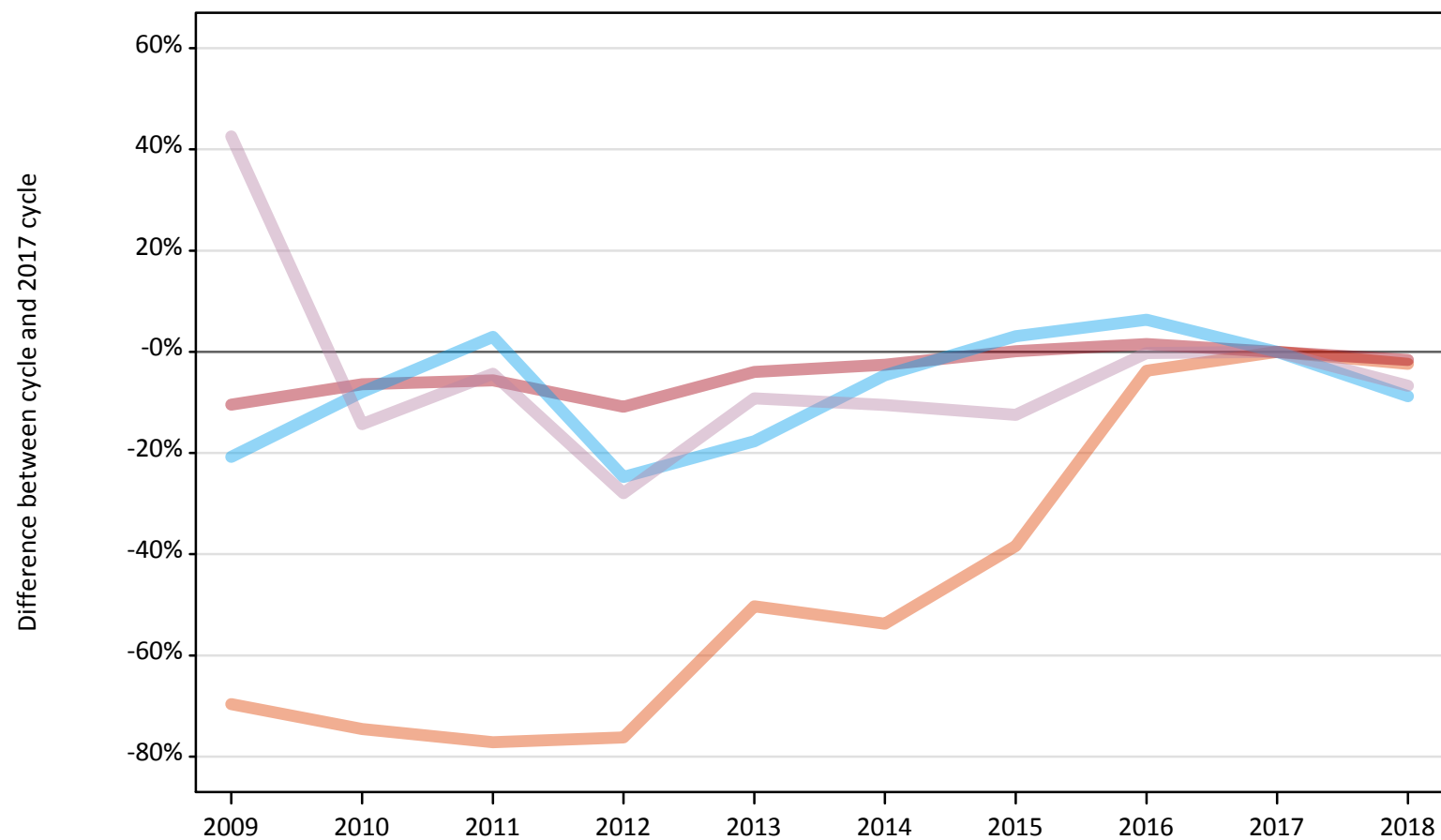
Applicant type	Status	2009	2010	2011	2012	2013	2014	2015	2016	2017	2018
All applicants	Placed	-12%	-9%	-7%	-15%	-7%	-5%	-1%	2%	0%	-2%

Note: The percentage change is not recorded in the above table for groups with fewer than 10 placed applicants in that cycle or in the 2017 cycle.

## A.6 Placed main scheme applicants from the UK: 1 day after A level results day

All Main scheme placed routes (excluding Adjustment): difference between cycle and 2017 cycle

- Placed (Clearing)
- Placed (Firm)
- Placed (Insurance)
- Placed (Other)



Note: The percentage change is not plotted in the above chart for groups with fewer than 30 placed applicants in any one cycle.

### A.7 Placed main scheme applicants from the UK: 1 day after A level results day

All Main scheme placed routes (excluding Adjustment): applicants at 1 day after A level results day

Applicant type	Status	2009	2010	2011	2012	2013	2014	2015	2016	2017	2018
Main scheme	Placed (Clearing)	2,880	2,410	2,170	2,260	4,720	4,390	5,850	9,130	9,490	9,260
	Placed (Firm)	292,110	305,220	307,750	290,720	313,040	317,780	326,370	331,020	326,060	320,780
	Placed (Insurance)	23,020	26,740	29,910	21,860	23,900	27,710	29,930	30,880	29,040	26,500
	Placed (Other)	15,340	9,220	10,290	7,760	9,770	9,630	9,420	10,730	10,760	10,040

### A.8 Placed main scheme applicants from the UK: 1 day after A level results day

All Main scheme placed routes (excluding Adjustment): difference between cycle and 2017 cycle

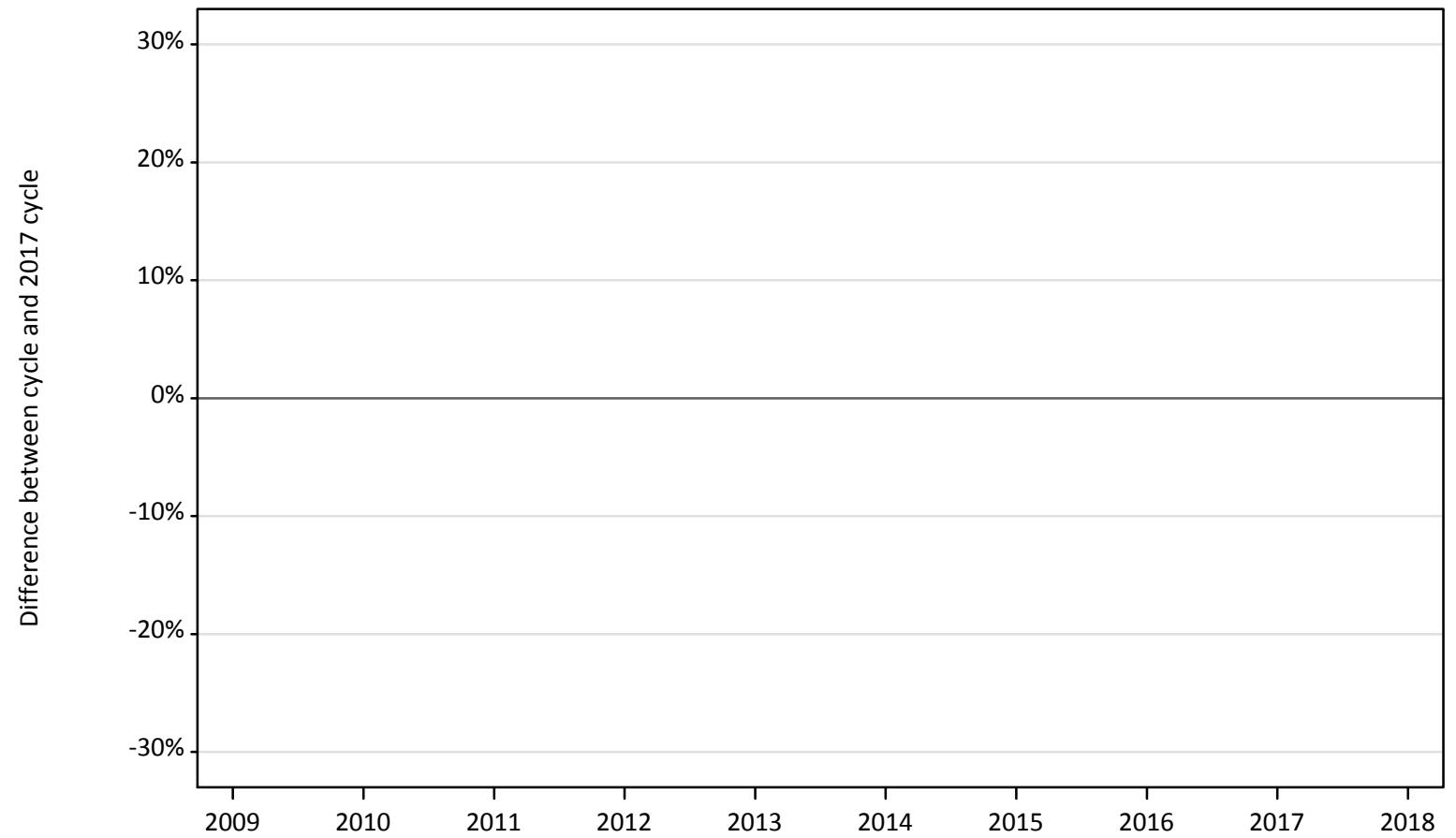
Applicant type	Status	2009	2010	2011	2012	2013	2014	2015	2016	2017	2018
Main scheme	Placed (Clearing)	-70%	-75%	-77%	-76%	-50%	-54%	-38%	-4%	0%	-2%
	Placed (Firm)	-10%	-6%	-6%	-11%	-4%	-3%	0%	2%	0%	-2%
	Placed (Insurance)	-21%	-8%	3%	-25%	-18%	-5%	3%	6%	0%	-9%
	Placed (Other)	43%	-14%	-4%	-28%	-9%	-10%	-12%	-0%	0%	-7%

Note: The percentage change is not recorded in the above table for groups with fewer than 10 placed applicants in that cycle or in the 2017 cycle.

## A.9 Main scheme applicants placed through adjustment: 1 day after A level results day

Placed through adjustment: difference between cycle and 2017 cycle

Placed (Adjustment)



Note: The percentage change is not plotted in the above chart for groups with fewer than 30 placed applicants in any one cycle.

### A.10 Main scheme applicants placed through adjustment: 1 day after A level results day

Placed through adjustment: applicants at 1 day after A level results day

Applicant type	Status	2009	2010	2011	2012	2013	2014	2015	2016	2017	2018
Main scheme	Placed (Adjustment)	50	20	50	130	280	280	360	270	360	330

### A.11 Main scheme applicants placed through adjustment: 1 day after A level results day

Placed through adjustment: difference between cycle and 2017 cycle

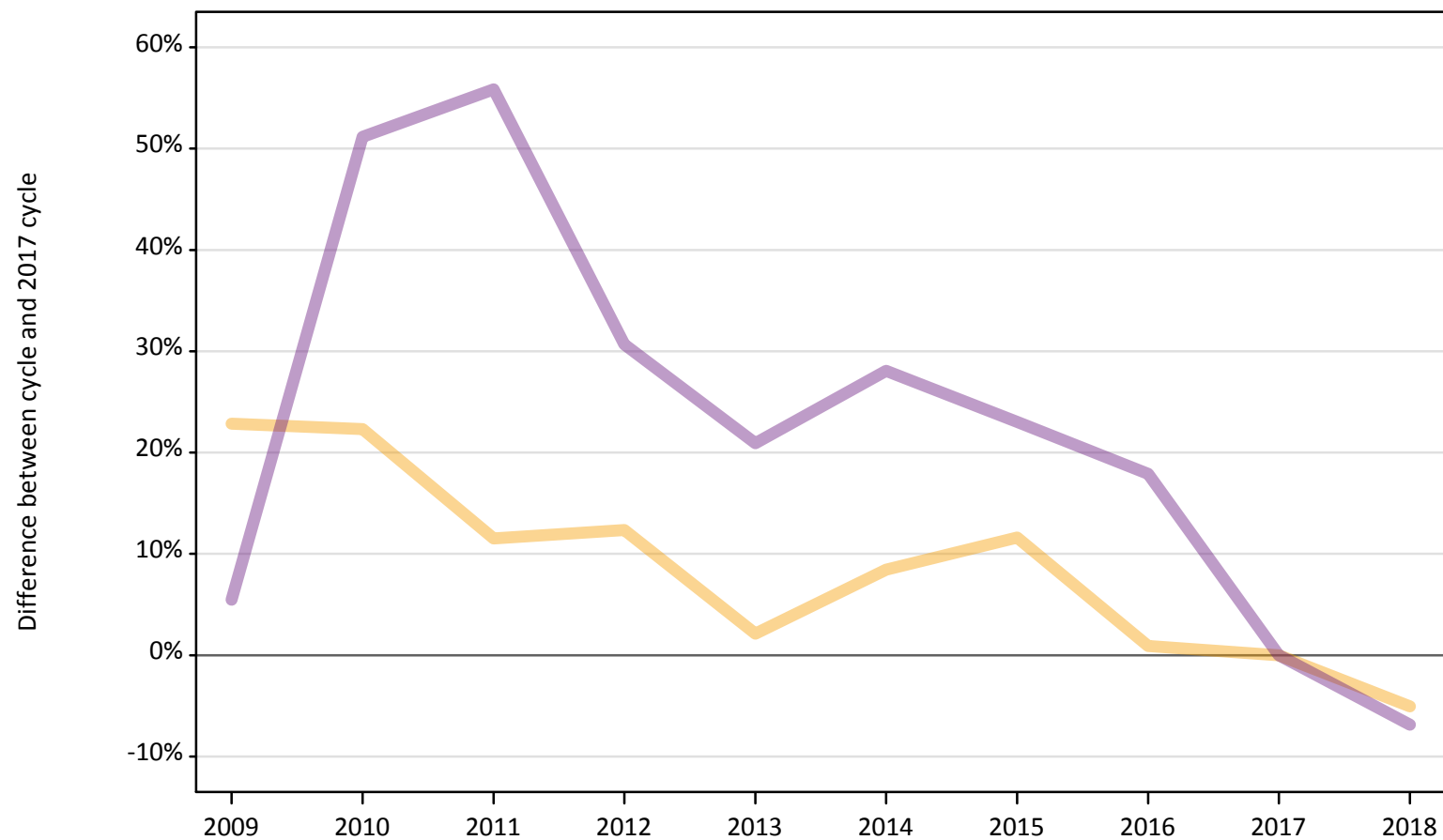
Applicant type	Status	2009	2010	2011	2012	2013	2014	2015	2016	2017	2018
Main scheme	Placed (Adjustment)	-87%	-94%	-85%	-65%	-22%	-24%	-0%	-25%	0%	-9%

Note: The percentage change is not recorded in the above table for groups with fewer than 10 placed applicants in that cycle or in the 2017 cycle.

## A.12 Main scheme applicants not currently placed from the UK: 1 day after A level results day

Applicants in unplaced states: difference between cycle and 2017 cycle

— Holding offer  
— Free to be placed in Clearing



Note: The percentage change is not plotted in the above chart for groups with fewer than 30 unplaced applicants in any one cycle.



### A.13 Main scheme applicants not currently placed from the UK: 1 day after A level results day

Applicants in unplaced states: applicants at 1 day after A level results day

Applicant type	Status	2009	2010	2011	2012	2013	2014	2015	2016	2017	2018
Main scheme	Holding offer	64,940	64,650	58,950	59,400	53,980	57,330	59,010	53,340	52,860	50,190
	Free to be placed in Clearing	101,270	145,130	149,660	125,490	116,100	122,960	118,140	113,210	96,010	89,430

### A.14 Main scheme applicants not currently placed from the UK: 1 day after A level results day

Applicants in unplaced states: difference between cycle and 2017 cycle

Applicant type	Status	2009	2010	2011	2012	2013	2014	2015	2016	2017	2018
Main scheme	Holding offer	23%	22%	12%	12%	2%	8%	12%	1%	0%	-5%
	Free to be placed in Clearing	5%	51%	56%	31%	21%	28%	23%	18%	0%	-7%

Note: The percentage change is not recorded in the above table for groups with fewer than 10 unplaced applicants in that cycle or in the 2017 cycle.

### A.15 Direct to Clearing applicants from the UK: 1 day after A level results day

Direct to Clearing: difference between cycle and 2017 cycle

- Placed (Direct to Clearing)
- Other (Direct to Clearing)



Note: The percentage change is not plotted in the above chart for groups with fewer than 30 placed applicants in any one cycle.

### A.16 Direct to Clearing applicants from the UK: 1 day after A level results day

Direct to Clearing 1 day after A level results day

Applicant type	Status	2009	2010	2011	2012	2013	2014	2015	2016	2017	2018
Direct to Clearing	Placed (Direct to Clearing)	1,480	880	850	1,140	2,090	1,710	2,090	3,190	3,180	3,680
	Other (Direct to Clearing)	10,350	8,190	7,890	7,000	8,280	7,000	7,870	7,660	7,640	7,600

### A.17 Direct to Clearing applicants from the UK: 1 day after A level results day

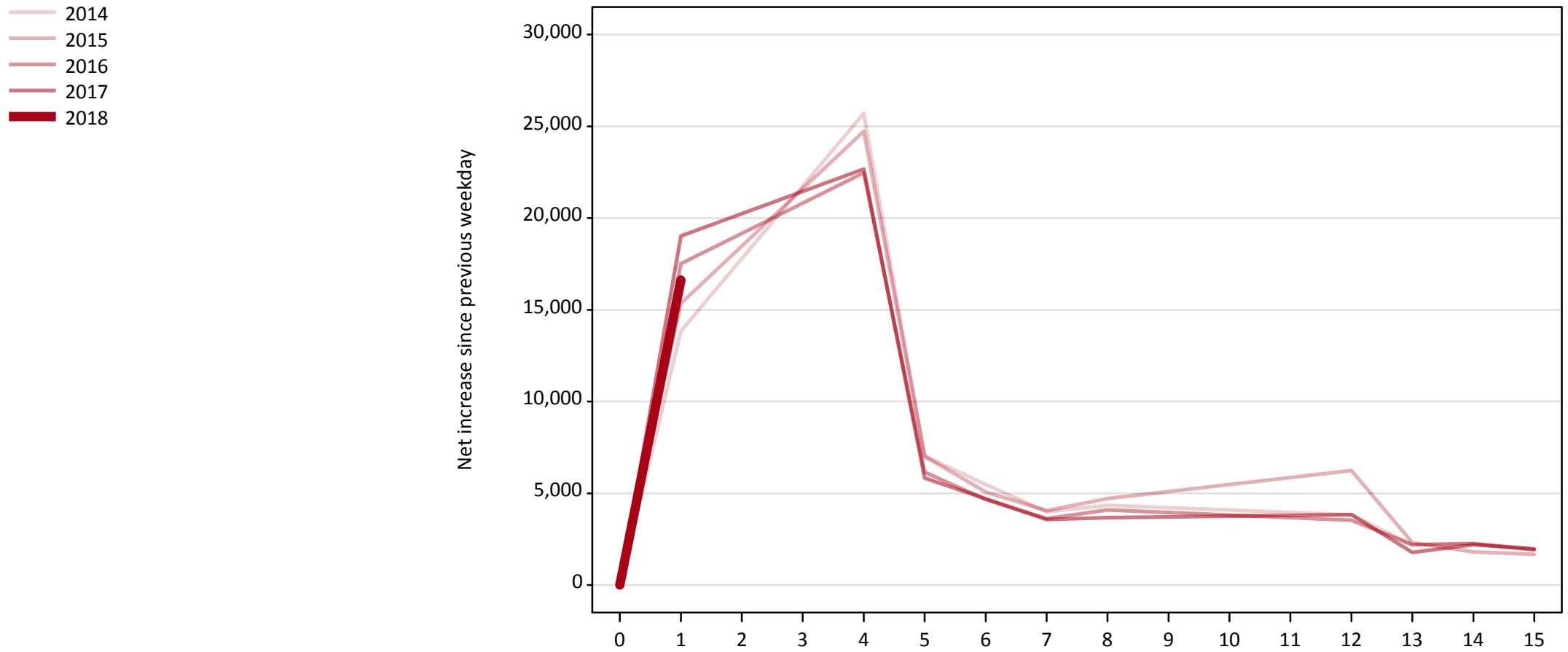
Direct to Clearing: difference between cycle and 2017 cycle

Applicant type	Status	2009	2010	2011	2012	2013	2014	2015	2016	2017	2018
Direct to Clearing	Placed (Direct to Clearing)	-54%	-72%	-73%	-64%	-34%	-46%	-34%	0%	0%	16%
	Other (Direct to Clearing)	36%	7%	3%	-8%	8%	-8%	3%	0%	0%	-0%

Note: The percentage change is not recorded in the above table for groups with fewer than 10 placed applicants in that cycle or in the 2017 cycle.

### A.18 All Placed: Daily net change (from the UK)

Net increase since previous weekday (2018 cycle up to 1 day after A level results day)



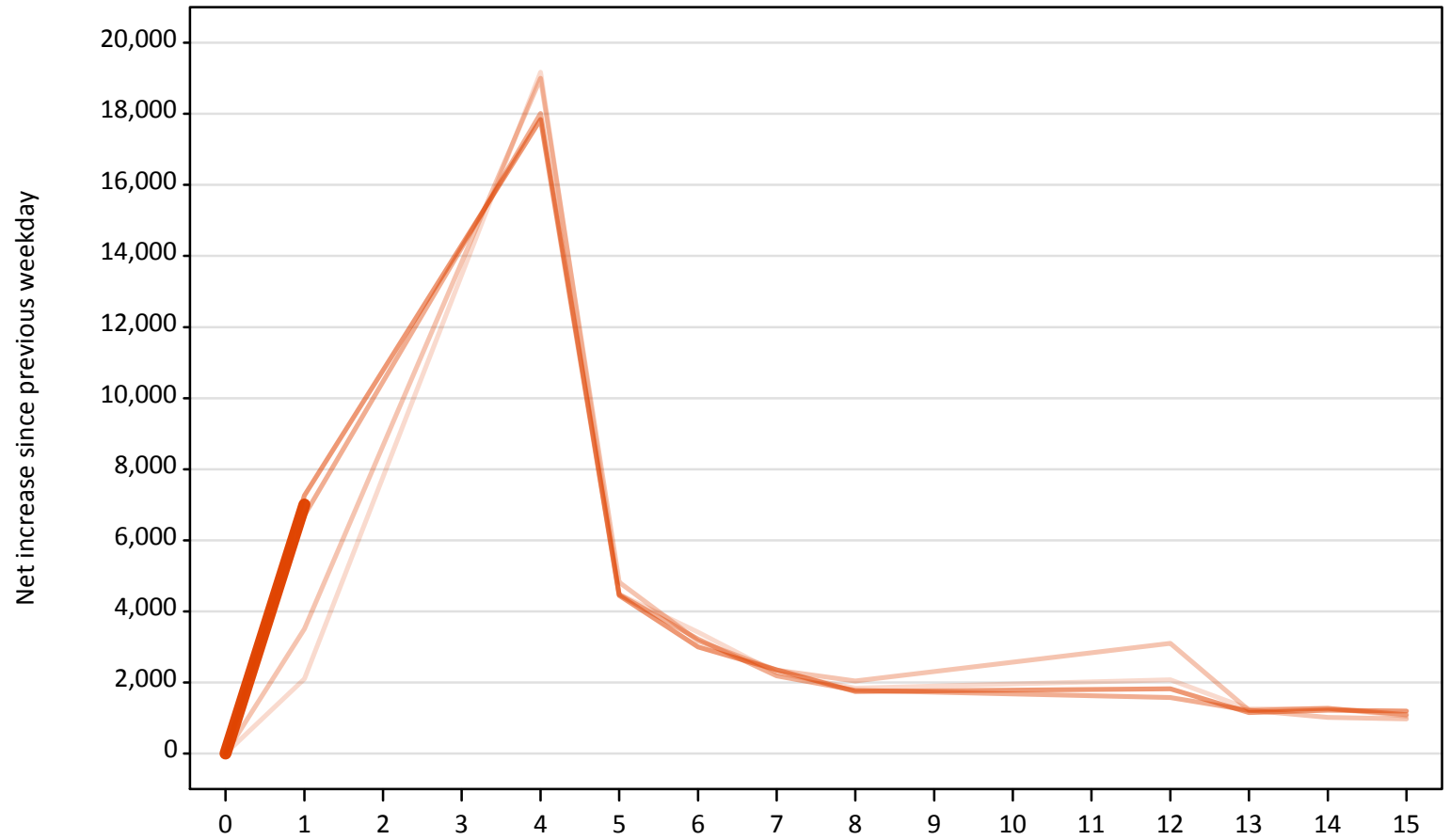
**A.19 All Placed: Daily net change (from the UK)**

Net increase since previous weekday (2018 cycle up to 1 day after A level results day)

Applicant status, days since A level results day		2014	2015	2016	2017	2018
All Placed	0	0	0	0	0	0
	1	13,840	15,350	17,510	19,030	16,620
	4	25,710	24,730	22,470	22,670	
	5	7,020	7,020	6,140	5,840	
	6	5,480	5,070	4,660	4,710	
	7	3,990	4,060	3,630	3,570	
	8	4,350	4,720	4,090	3,670	
	12	3,830	6,240	3,530	3,840	
	13	2,190	2,310	2,200	1,780	
	14	2,280	1,810	2,260	2,200	
	15	1,950	1,680	1,920	1,970	

**A.20 Placed through Clearing only: Daily net change (from the UK)**  
Net increase since previous weekday (2018 cycle up to 1 day after A level results day)

- 2014
- 2015
- 2016
- 2017
- 2018**

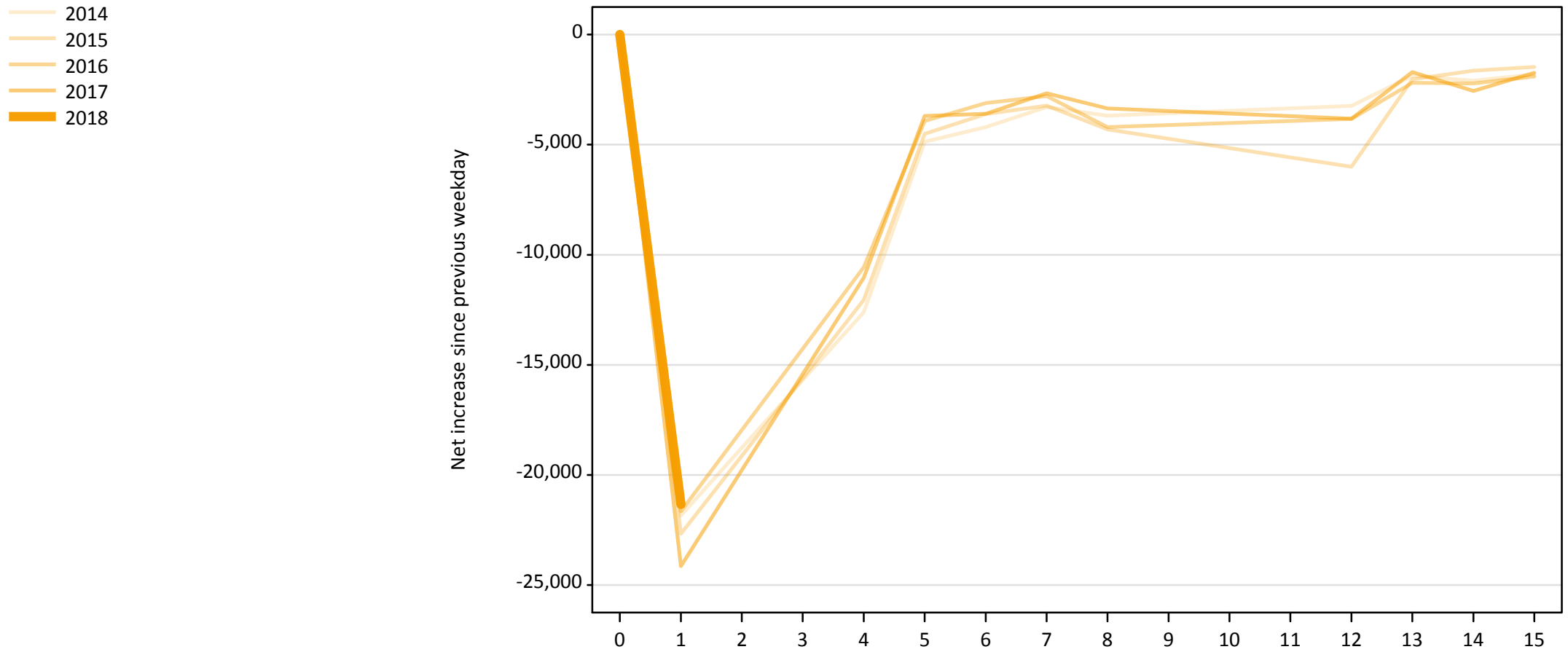


**A.21 Placed through Clearing only: Daily net change (from the UK)**

Net increase since previous weekday (2018 cycle up to 1 day after A level results day)

Applicant status, days since A level results day		2014	2015	2016	2017	2018
Placed through Clearing only	0	0	0	0	0	0
	1	2,100	3,510	6,700	7,260	7,010
	4	19,170	19,000	18,010	17,840	
	5	4,480	4,820	4,470	4,450	
	6	3,420	3,170	3,220	3,000	
	7	2,270	2,350	2,180	2,360	
	8	1,840	2,040	1,780	1,740	
	12	2,070	3,100	1,570	1,820	
	13	1,250	1,220	1,210	1,150	
	14	1,270	1,020	1,270	1,220	
	15	1,050	980	1,090	1,200	

**A.22 Holding Offer: Daily net change (from the UK)**  
Net increase since previous weekday (2018 cycle up to 1 day after A level results day)





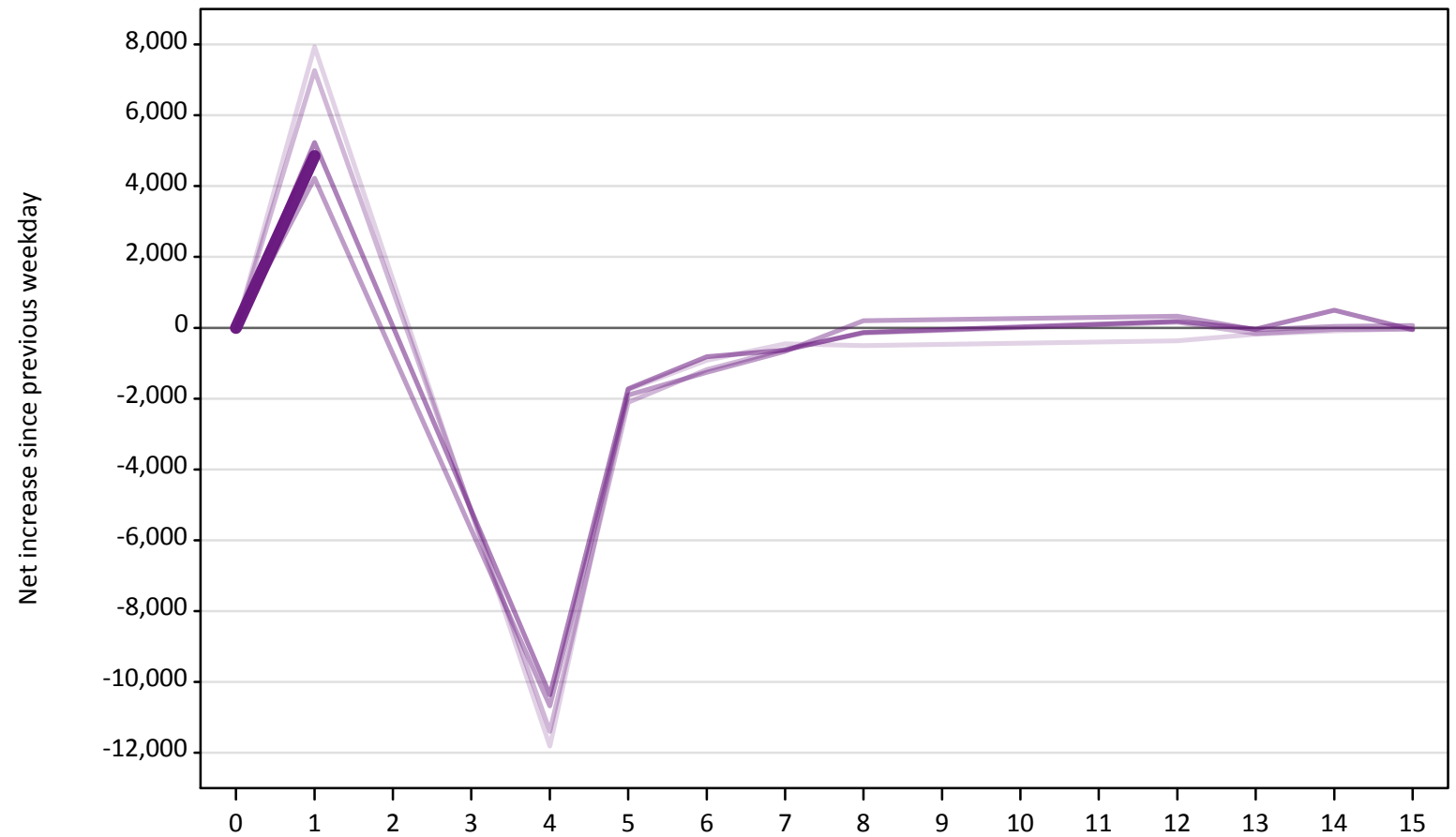
### A.23 Holding Offer: Daily net change (from the UK)

Net increase since previous weekday (2018 cycle up to 1 day after A level results day)

Applicant status, days since A level results day		2014	2015	2016	2017	2018
Holding Offer	0	0	0	0	0	0
	1	-21,840	-22,670	-21,650	-24,140	-21,330
	4	-12,610	-12,050	-10,570	-11,040	
	5	-4,870	-4,510	-3,920	-3,690	
	6	-4,210	-3,610	-3,110	-3,600	
	7	-3,290	-3,230	-2,790	-2,670	
	8	-3,690	-4,310	-4,200	-3,360	
	12	-3,240	-6,000	-3,830	-3,830	
	13	-1,870	-2,030	-2,190	-1,700	
	14	-2,100	-1,640	-2,220	-2,560	
	15	-1,810	-1,470	-1,900	-1,740	

**A.24 Free to be placed in Clearing: Daily net change (from the UK)**  
Net increase since previous weekday (2018 cycle up to 1 day after A level results day)

- 2014
- 2015
- 2016
- 2017
- 2018



**A.25 Free to be placed in Clearing: Daily net change (from the UK)**

Net increase since previous weekday (2018 cycle up to 1 day after A level results day)

Applicant status, days since A level results day		2014	2015	2016	2017	2018
Free to be placed in Clearing	0	0	0	0	0	0
	1	7,940	7,260	4,220	5,230	4,850
	4	-11,810	-11,400	-10,680	-10,370	
	5	-1,750	-2,100	-1,900	-1,730	
	6	-920	-1,180	-1,260	-820	
	7	-450	-610	-660	-630	
	8	-510	-150	200	-130	
	12	-370	150	320	190	
	13	-180	-170	-50	-40	
	14	-90	-50	40	500	
	15	-30	-40	60	-50	