

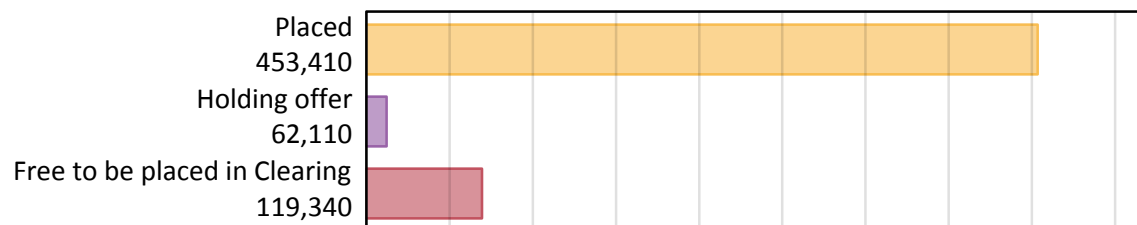
# Daily Clearing Analysis: Overview

Analysis at 00:05 on Monday 20 August 2018 (4 days after A level results day)

## A.1 Applicants by type and status from all domiciles, 2018 cycle

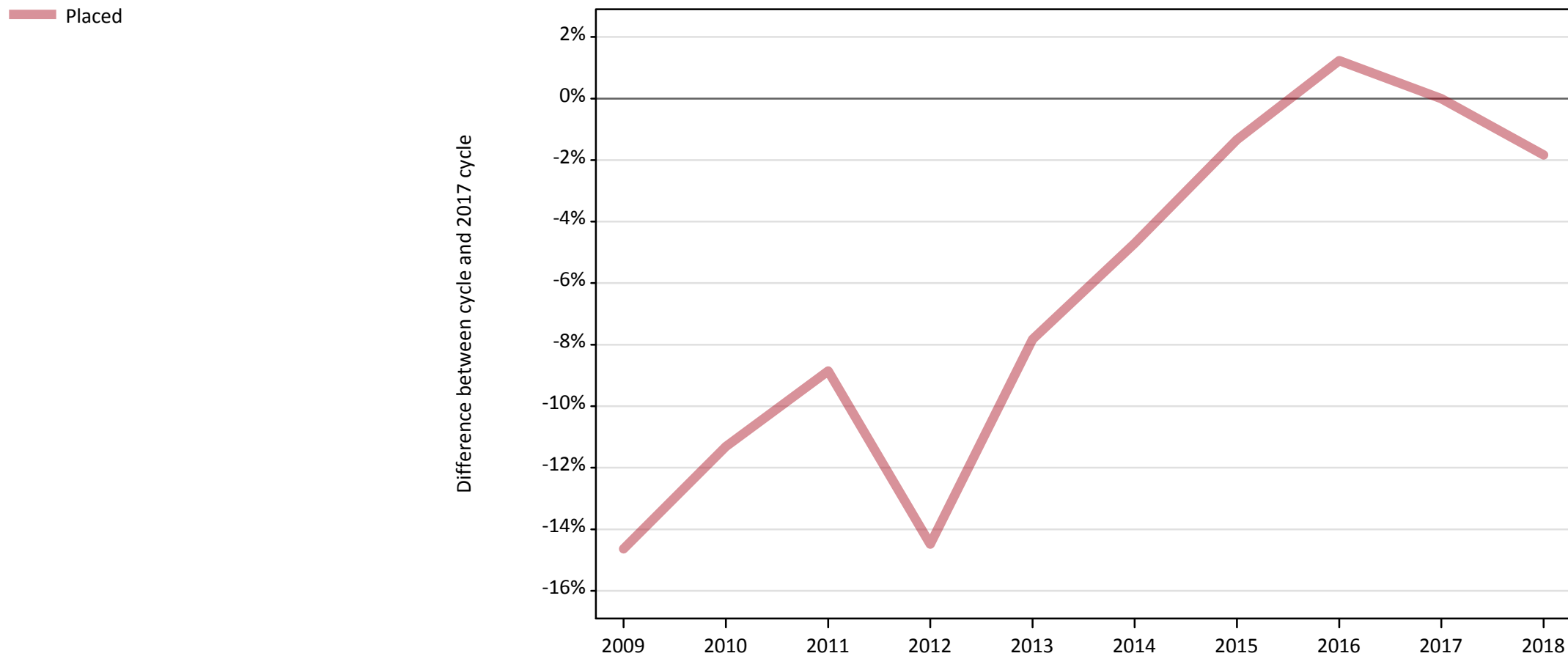
Applicant type	Status	2018
Main scheme	Placed (Clearing)	27,480
	Placed (Adjustment)	730
	Placed (Firm)	373,750
	Placed (Insurance)	32,230
	Placed (Other)	12,990
	Holding offer	62,110
	Free to be placed in Clearing	119,340
Direct to Clearing	Placed (Direct to Clearing)	6,230
	Other (Direct to Clearing)	8,370
All applicants	Placed	453,410

## A.2 Summary of applicants who are placed, holding offers or free to be placed in Clearing ( all domiciles )



### A.3 All placed applicants from all domiciles: 4 days after A level results day

All placed applicants: difference between cycle and 2017 cycle



Note: The percentage change is not plotted in the above chart for groups with fewer than 30 placed applicants in any one cycle.

#### A.4 All placed applicants from all domiciles: 4 days after A level results day

All placed applicants: applicants at 4 days after A level results day

Applicant type	Status	2009	2010	2011	2012	2013	2014	2015	2016	2017	2018
All applicants	Placed	394,270	409,610	420,950	394,980	425,720	440,130	455,700	467,530	461,860	453,410

#### A.5 All placed applicants from all domiciles: 4 days after A level results day

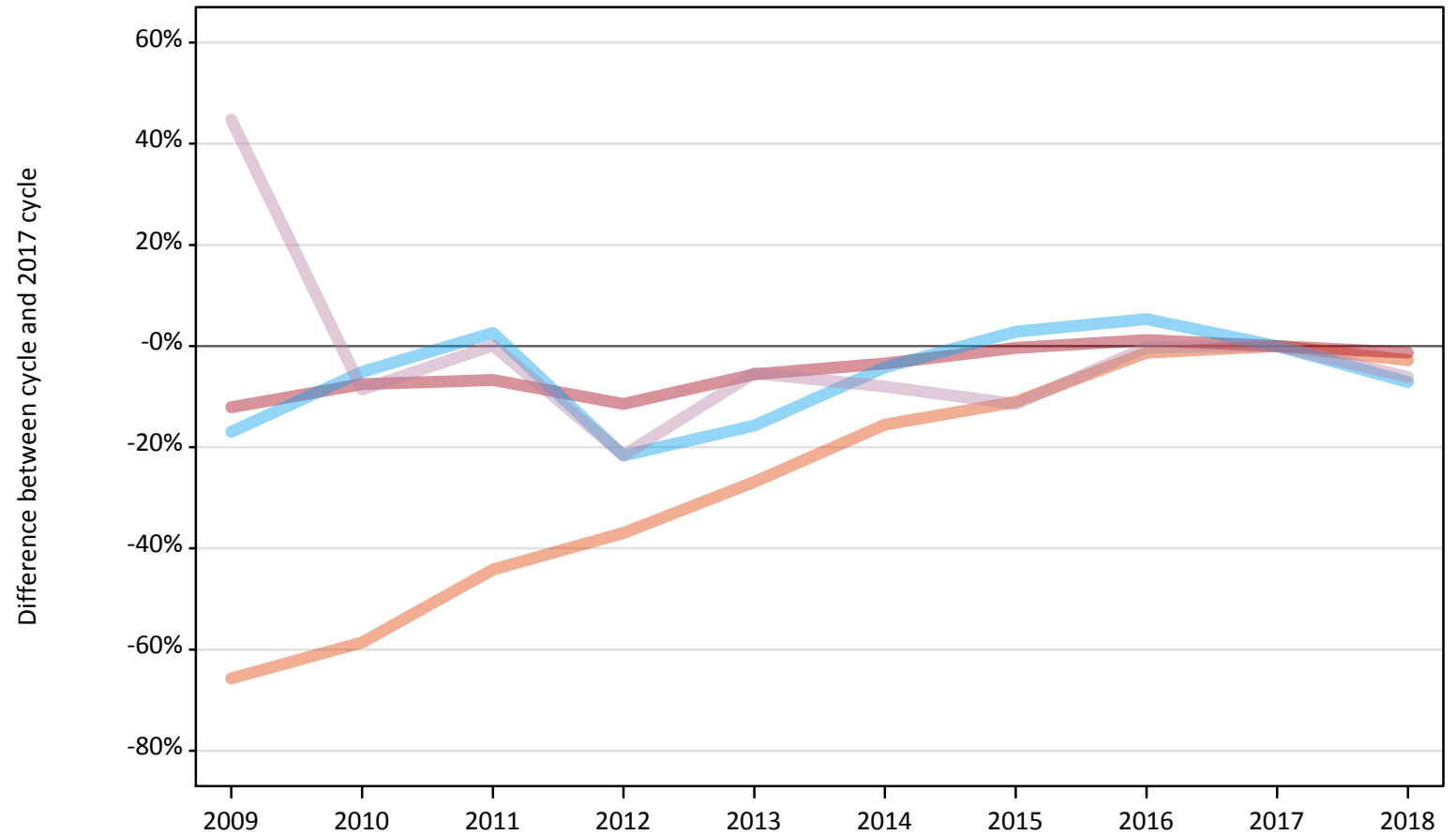
All placed applicants: difference between cycle and 2017 cycle

Applicant type	Status	2009	2010	2011	2012	2013	2014	2015	2016	2017	2018
All applicants	Placed	-15%	-11%	-9%	-14%	-8%	-5%	-1%	1%	0%	-2%

Note: The percentage change is not recorded in the above table for groups with fewer than 10 placed applicants in that cycle or in the 2017 cycle.

**A.6 Placed main scheme applicants from all domiciles: 4 days after A level results day**  
All Main scheme placed routes (excluding Adjustment): difference between cycle and 2017 cycle

- Placed (Clearing)
- Placed (Firm)
- Placed (Insurance)
- Placed (Other)



Note: The percentage change is not plotted in the above chart for groups with fewer than 30 placed applicants in any one cycle.

### A.7 Placed main scheme applicants from all domiciles: 4 days after A level results day

All Main scheme placed routes (excluding Adjustment): applicants at 4 days after A level results day

Applicant type	Status	2009	2010	2011	2012	2013	2014	2015	2016	2017	2018
Main scheme	Placed (Clearing)	9,700	11,700	15,780	17,820	20,670	23,880	25,160	27,900	28,270	27,480
	Placed (Firm)	332,890	350,220	353,290	335,420	357,570	365,680	377,460	383,170	378,740	373,750
	Placed (Insurance)	28,800	32,930	35,590	27,180	29,250	33,240	35,680	36,550	34,690	32,230
	Placed (Other)	20,040	12,650	13,860	10,850	13,100	12,730	12,250	13,810	13,840	12,990

### A.8 Placed main scheme applicants from all domiciles: 4 days after A level results day

All Main scheme placed routes (excluding Adjustment): difference between cycle and 2017 cycle

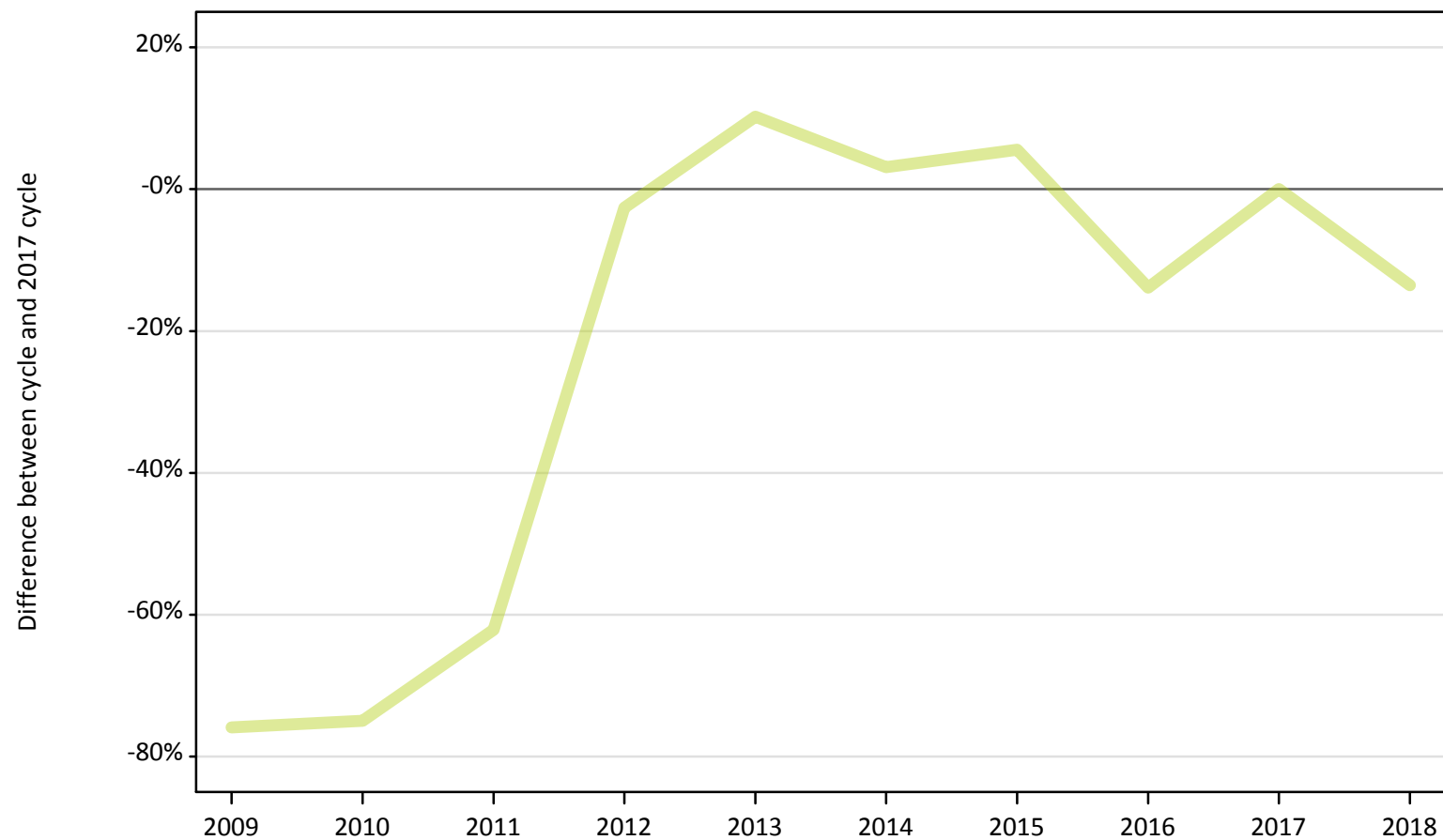
Applicant type	Status	2009	2010	2011	2012	2013	2014	2015	2016	2017	2018
Main scheme	Placed (Clearing)	-66%	-59%	-44%	-37%	-27%	-16%	-11%	-1%	0%	-3%
	Placed (Firm)	-12%	-8%	-7%	-11%	-6%	-3%	-0%	1%	0%	-1%
	Placed (Insurance)	-17%	-5%	3%	-22%	-16%	-4%	3%	5%	0%	-7%
	Placed (Other)	45%	-9%	0%	-22%	-5%	-8%	-11%	-0%	0%	-6%

Note: The percentage change is not recorded in the above table for groups with fewer than 10 placed applicants in that cycle or in the 2017 cycle.

## A.9 Main scheme applicants placed through adjustment: 4 days after A level results day

Placed through adjustment: difference between cycle and 2017 cycle

Placed (Adjustment)



Note: The percentage change is not plotted in the above chart for groups with fewer than 30 placed applicants in any one cycle.

### A.10 Main scheme applicants placed through adjustment: 4 days after A level results day

Placed through adjustment: applicants at 4 days after A level results day

Applicant type	Status	2009	2010	2011	2012	2013	2014	2015	2016	2017	2018
Main scheme	Placed (Adjustment)	200	210	320	820	930	870	890	730	840	730

### A.11 Main scheme applicants placed through adjustment: 4 days after A level results day

Placed through adjustment: difference between cycle and 2017 cycle

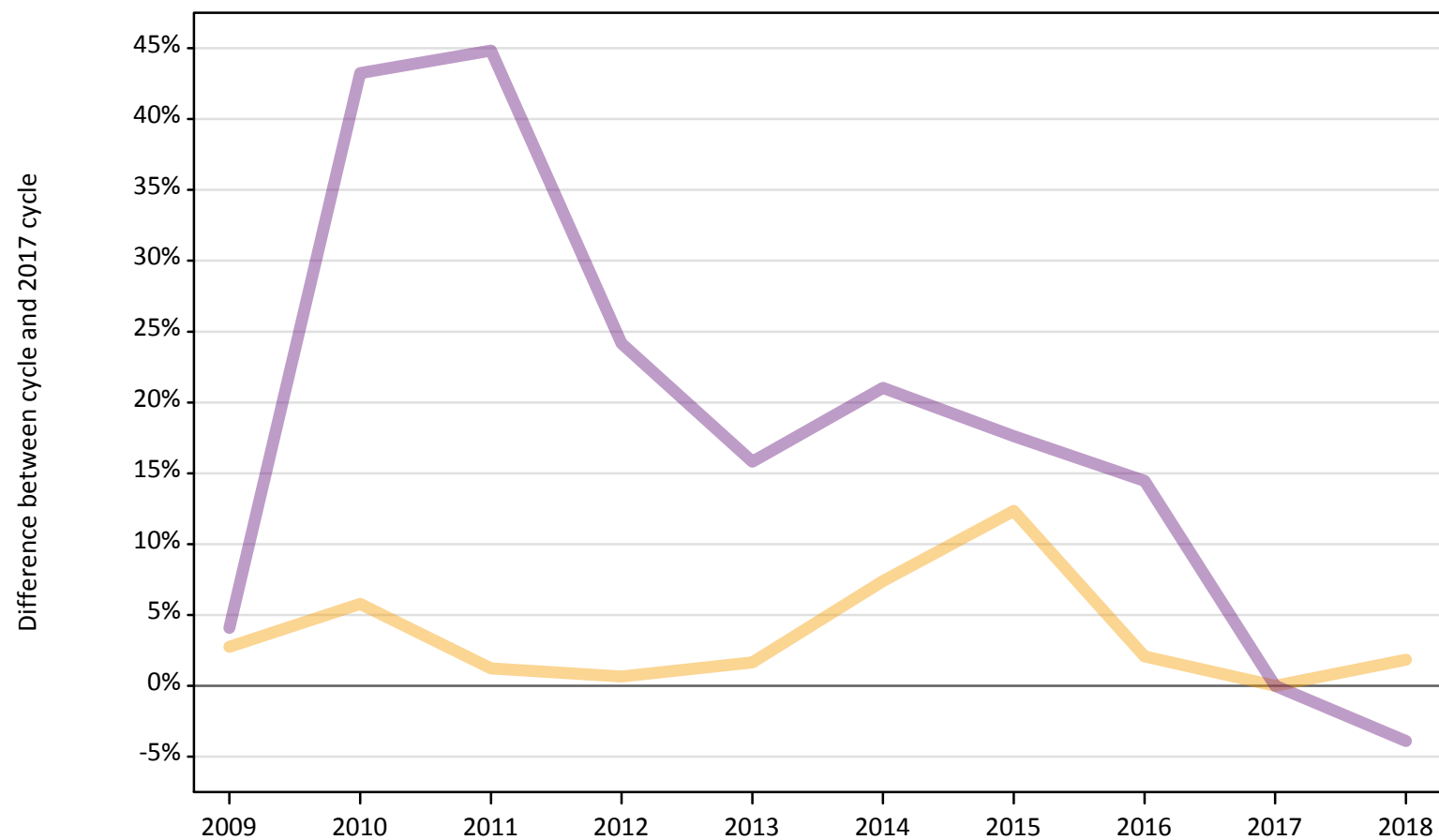
Applicant type	Status	2009	2010	2011	2012	2013	2014	2015	2016	2017	2018
Main scheme	Placed (Adjustment)	-76%	-75%	-62%	-3%	10%	3%	6%	-14%	0%	-14%

Note: The percentage change is not recorded in the above table for groups with fewer than 10 placed applicants in that cycle or in the 2017 cycle.

### A.12 Main scheme applicants not currently placed from all domiciles: 4 days after A level results day

Applicants in unplaced states: difference between cycle and 2017 cycle

— Holding offer  
— Free to be placed in Clearing



Note: The percentage change is not plotted in the above chart for groups with fewer than 30 unplaced applicants in any one cycle.



**A.13 Main scheme applicants not currently placed from all domiciles: 4 days after A level results day**

Applicants in unplaced states: applicants at 4 days after A level results day

Applicant type	Status	2009	2010	2011	2012	2013	2014	2015	2016	2017	2018
Main scheme	Holding offer	62,660	64,510	61,730	61,390	61,990	65,500	68,520	62,250	60,990	62,110
	Free to be placed in Clearing	129,250	177,890	179,880	154,200	143,830	150,300	146,060	142,140	124,190	119,340

**A.14 Main scheme applicants not currently placed from all domiciles: 4 days after A level results day**

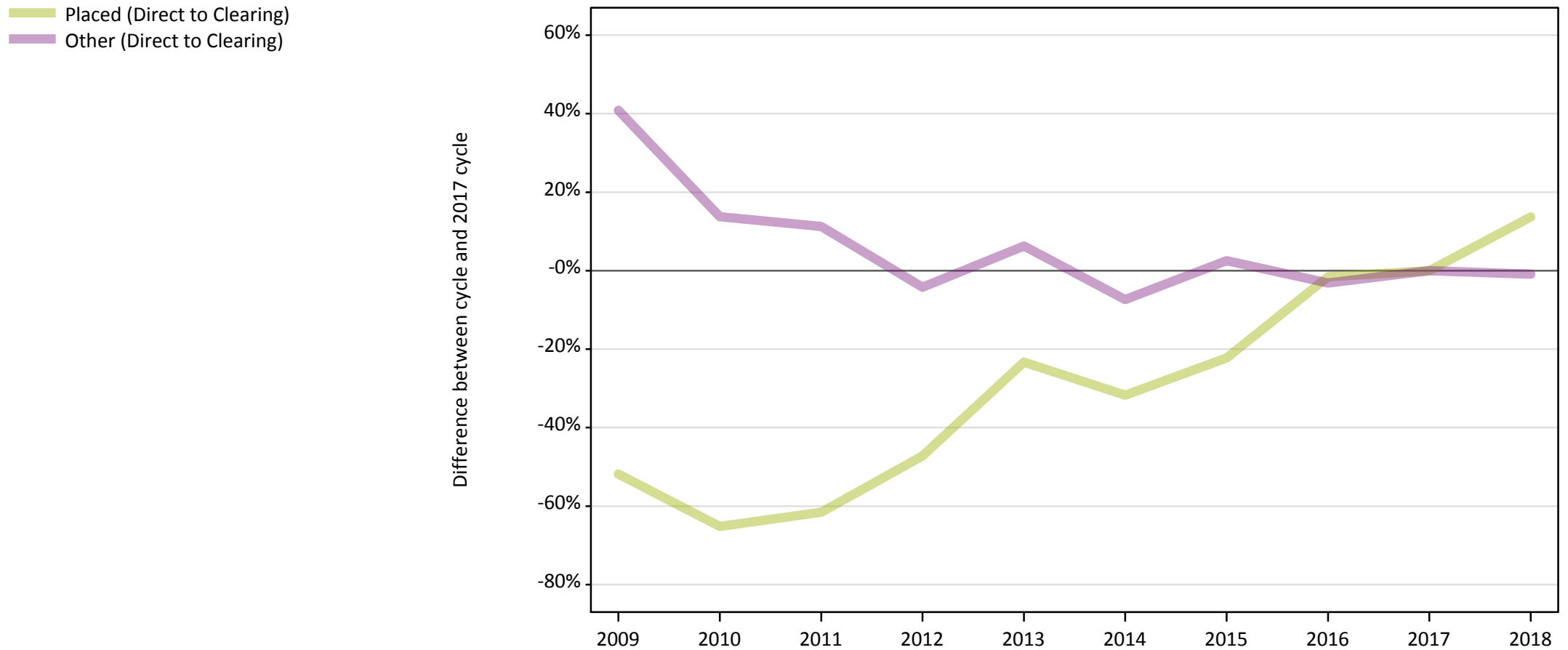
Applicants in unplaced states: difference between cycle and 2017 cycle

Applicant type	Status	2009	2010	2011	2012	2013	2014	2015	2016	2017	2018
Main scheme	Holding offer	3%	6%	1%	1%	2%	7%	12%	2%	0%	2%
	Free to be placed in Clearing	4%	43%	45%	24%	16%	21%	18%	14%	0%	-4%

Note: The percentage change is not recorded in the above table for groups with fewer than 10 unplaced applicants in that cycle or in the 2017 cycle.

### A.15 Direct to Clearing applicants from all domiciles: 4 days after A level results day

Direct to Clearing: difference between cycle and 2017 cycle



Note: The percentage change is not plotted in the above chart for groups with fewer than 30 placed applicants in any one cycle.

**A.16 Direct to Clearing applicants from all domiciles: 4 days after A level results day**

Direct to Clearing 4 days after A level results day

Applicant type	Status	2009	2010	2011	2012	2013	2014	2015	2016	2017	2018
Direct to Clearing	Placed (Direct to Clearing)	2,640	1,910	2,110	2,890	4,200	3,740	4,260	5,390	5,480	6,230
	Other (Direct to Clearing)	11,890	9,600	9,390	8,090	8,980	7,820	8,660	8,180	8,440	8,370

**A.17 Direct to Clearing applicants from all domiciles: 4 days after A level results day**

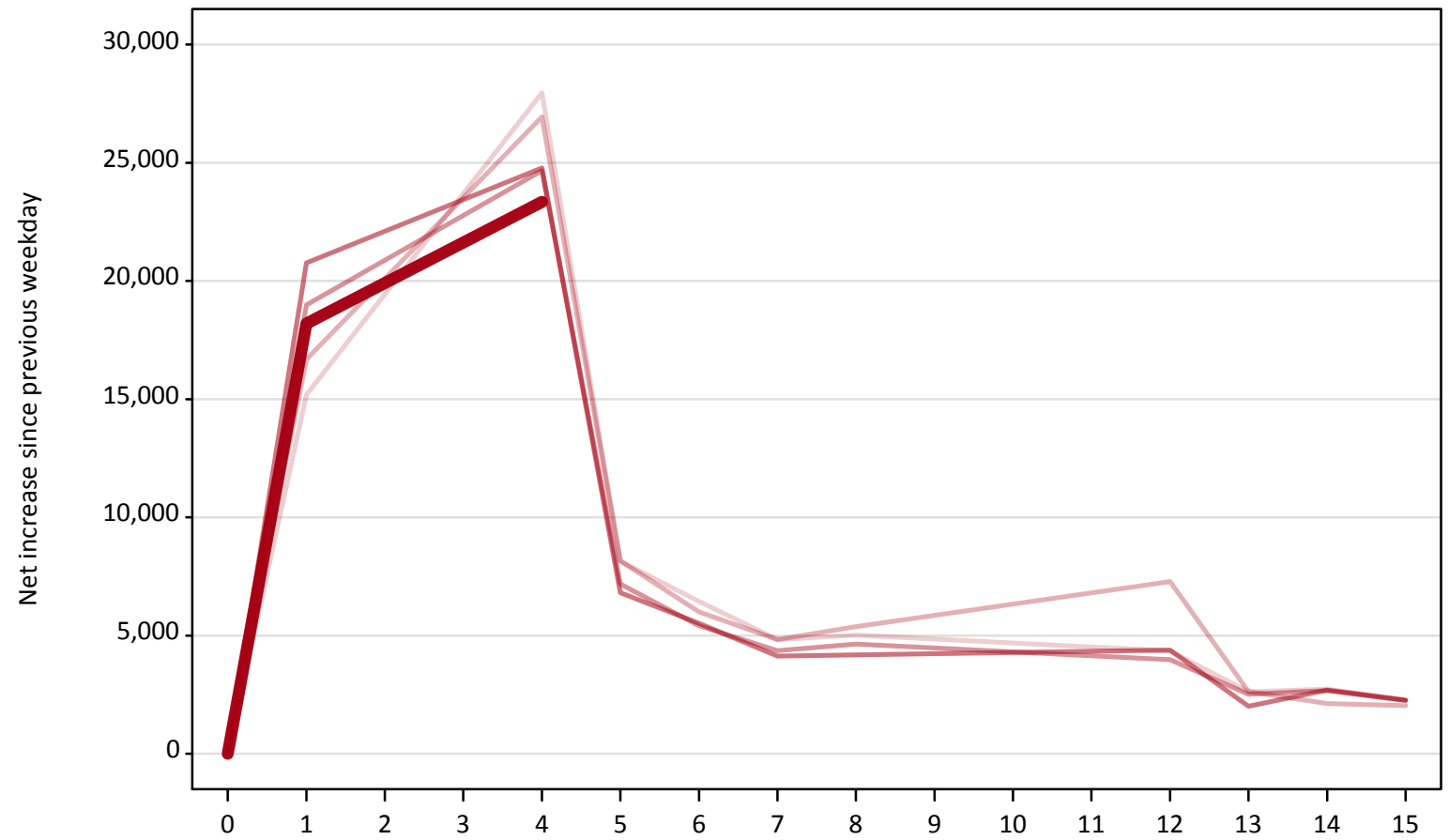
Direct to Clearing: difference between cycle and 2017 cycle

Applicant type	Status	2009	2010	2011	2012	2013	2014	2015	2016	2017	2018
Direct to Clearing	Placed (Direct to Clearing)	-52%	-65%	-62%	-47%	-23%	-32%	-22%	-2%	0%	14%
	Other (Direct to Clearing)	41%	14%	11%	-4%	6%	-7%	3%	-3%	0%	-1%

Note: The percentage change is not recorded in the above table for groups with fewer than 10 placed applicants in that cycle or in the 2017 cycle.

**A.18 All Placed: Daily net change (from all domiciles)**  
Net increase since previous weekday (2018 cycle up to 4 days after A level results day)

- 2014
- 2015
- 2016
- 2017
- 2018**

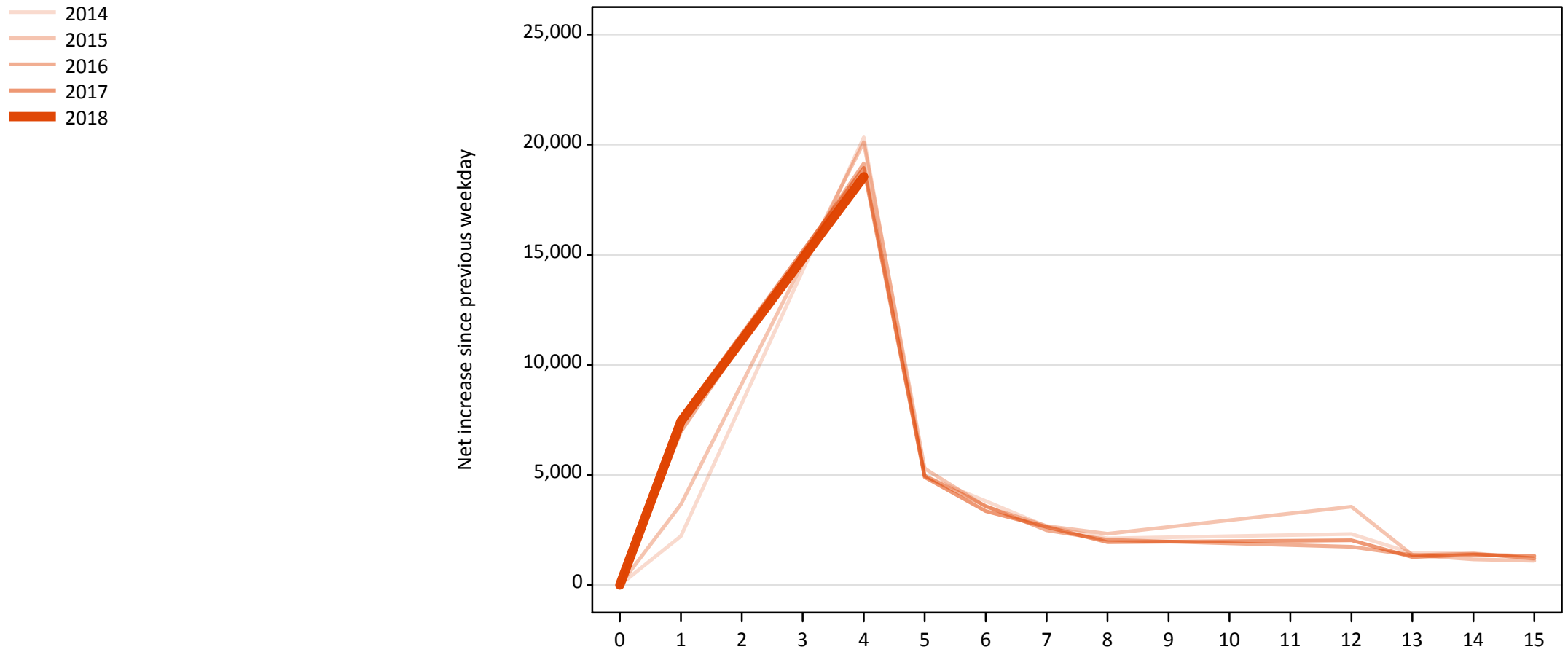


**A.19 All Placed: Daily net change (from all domiciles)**

Net increase since previous weekday (2018 cycle up to 4 days after A level results day)

Applicant status, days since A level results day		2014	2015	2016	2017	2018
All Placed	0	0	0	0	0	0
	1	15,180	16,680	18,990	20,770	18,200
	4	27,960	26,940	24,670	24,790	23,340
	5	8,140	8,160	7,170	6,810	
	6	6,450	6,000	5,410	5,510	
	7	4,830	4,830	4,350	4,140	
	8	5,020	5,370	4,640	4,190	
	12	4,340	7,280	3,980	4,380	
	13	2,620	2,630	2,510	2,010	
	14	2,730	2,120	2,660	2,700	
	15	2,280	2,030	2,250	2,260	

**A.20 Placed through Clearing only: Daily net change (from all domiciles)**  
Net increase since previous weekday (2018 cycle up to 4 days after A level results day)



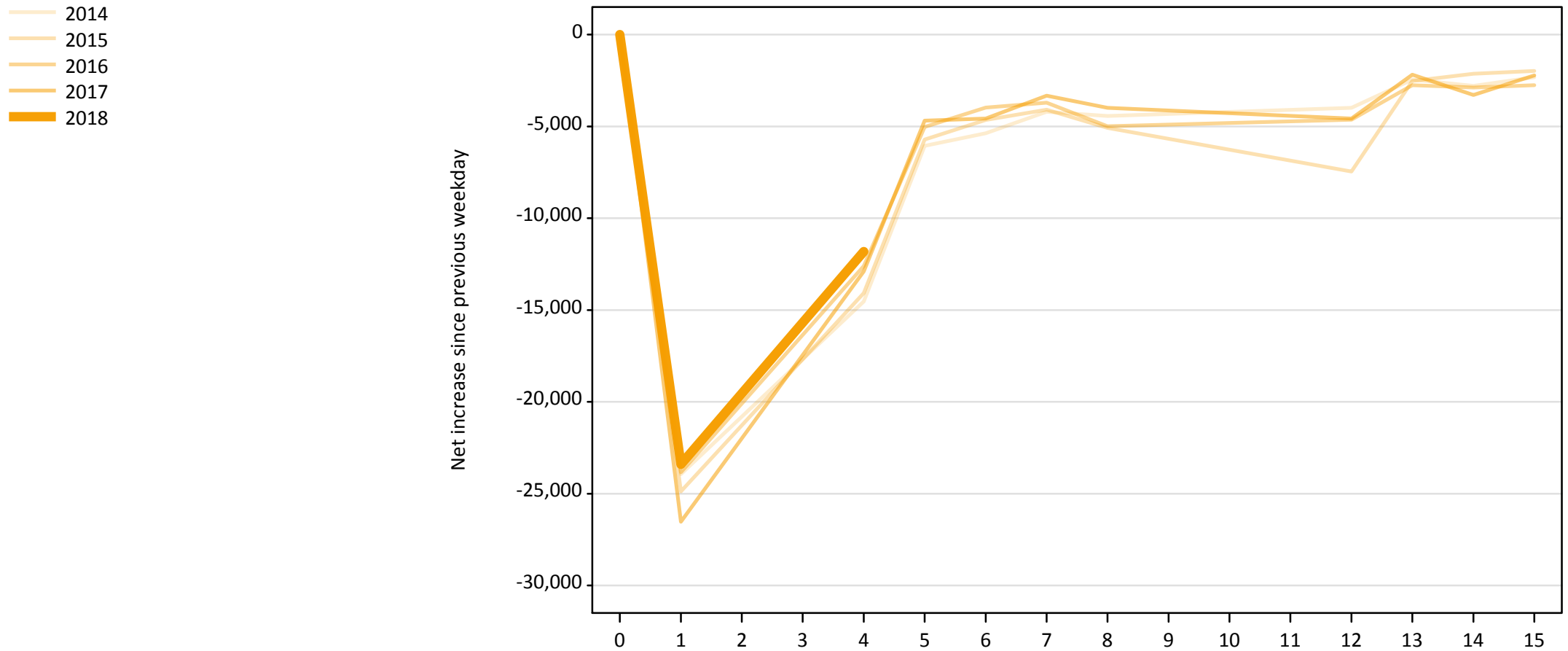
**A.21 Placed through Clearing only: Daily net change (from all domiciles)**

Net increase since previous weekday (2018 cycle up to 4 days after A level results day)

Applicant status, days since A level results day		2014	2015	2016	2017	2018
Placed through Clearing only	0	0	0	0	0	0
	1	2,220	3,660	6,970	7,640	7,440
	4	20,340	20,110	19,140	18,940	18,550
	5	4,950	5,290	4,960	4,910	
	6	3,810	3,560	3,590	3,360	
	7	2,650	2,680	2,480	2,640	
	8	2,120	2,330	2,050	1,950	
	12	2,310	3,550	1,740	2,030	
	13	1,450	1,370	1,350	1,270	
	14	1,450	1,160	1,420	1,370	
	15	1,190	1,100	1,210	1,320	

## A.22 Holding Offer: Daily net change (from all domiciles)

Net increase since previous weekday (2018 cycle up to 4 days after A level results day)



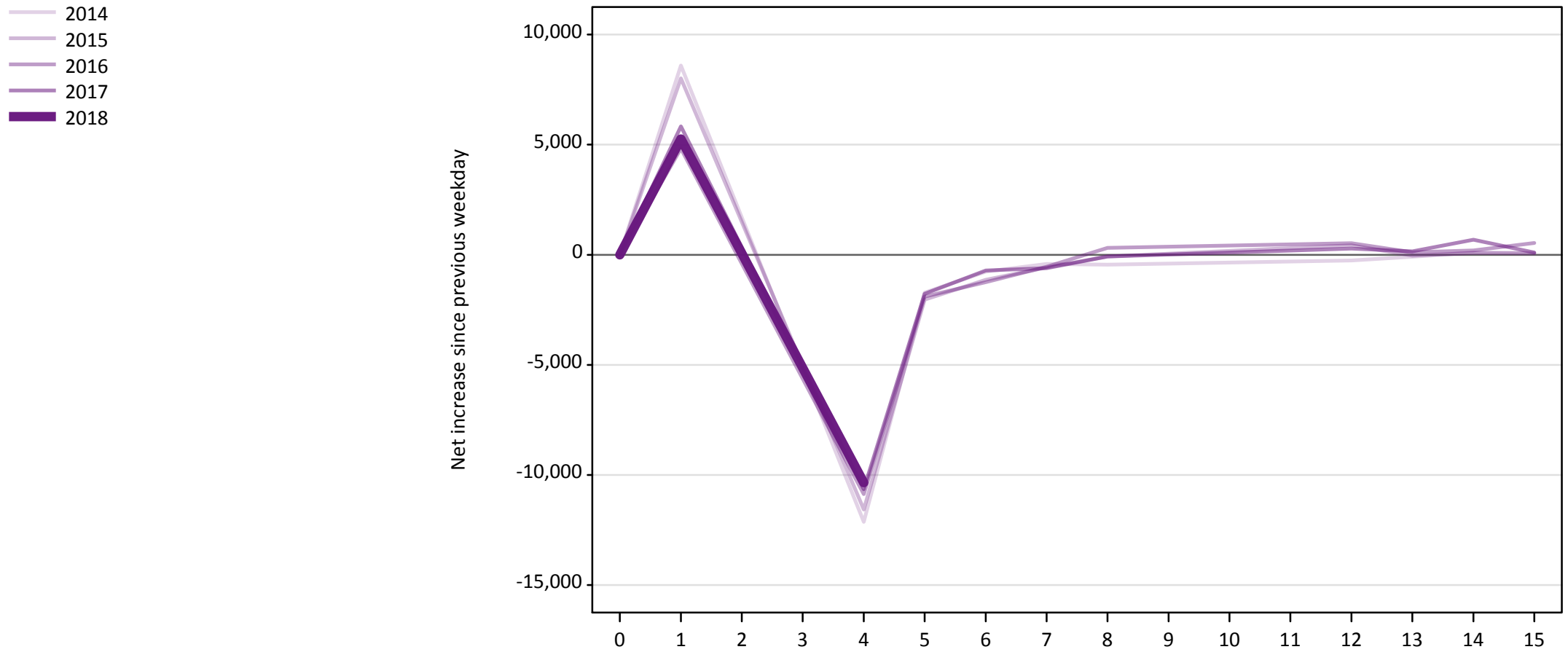


### A.23 Holding Offer: Daily net change (from all domiciles)

Net increase since previous weekday (2018 cycle up to 4 days after A level results day)

Applicant status, days since A level results day	2014	2015	2016	2017	2018	
Holding Offer	0	0	0	0	0	
	1	-23,940	-24,880	-23,840	-26,530	-23,410
	4	-14,530	-14,080	-12,600	-12,900	-11,810
	5	-6,060	-5,720	-5,030	-4,680	
	6	-5,380	-4,650	-3,970	-4,580	
	7	-4,210	-4,090	-3,700	-3,330	
	8	-4,430	-5,080	-4,990	-3,990	
	12	-3,980	-7,460	-4,640	-4,580	
	13	-2,450	-2,520	-2,760	-2,180	
	14	-2,790	-2,130	-2,880	-3,280	
	15	-2,330	-1,980	-2,760	-2,230	

**A.24 Free to be placed in Clearing: Daily net change (from all domiciles)**  
Net increase since previous weekday (2018 cycle up to 4 days after A level results day)



**A.25 Free to be placed in Clearing: Daily net change (from all domiciles)**

Net increase since previous weekday (2018 cycle up to 4 days after A level results day)

Applicant status, days since A level results day		2014	2015	2016	2017	2018
Free to be placed in Clearing	0	0	0	0	0	0
	1	8,600	8,010	4,820	5,830	5,260
	4	-12,130	-11,570	-10,870	-10,650	-10,350
	5	-1,720	-2,040	-1,900	-1,780	
	6	-770	-1,130	-1,250	-710	
	7	-420	-570	-540	-610	
	8	-450	-80	310	-80	
	12	-260	430	530	280	
	13	-90	-40	120	150	
	14	100	80	200	680	
	15	90	60	530	100	