

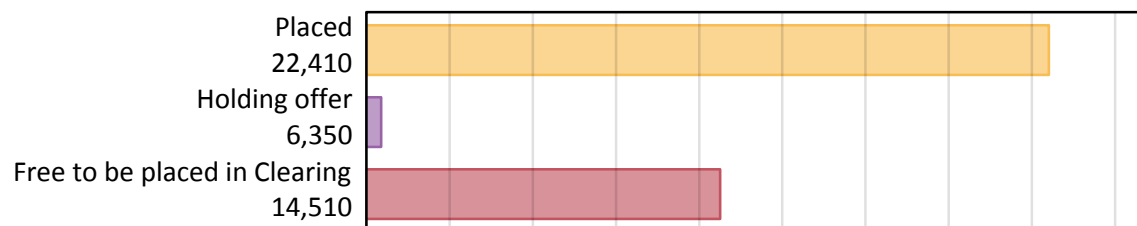
Daily Clearing Analysis: Overview

B7 Nursing analysis at 00:05 on Monday 20 August 2018 (4 days after A level results day)

AB.1 Placed applicants to nursing from all domiciles, 2018 cycle

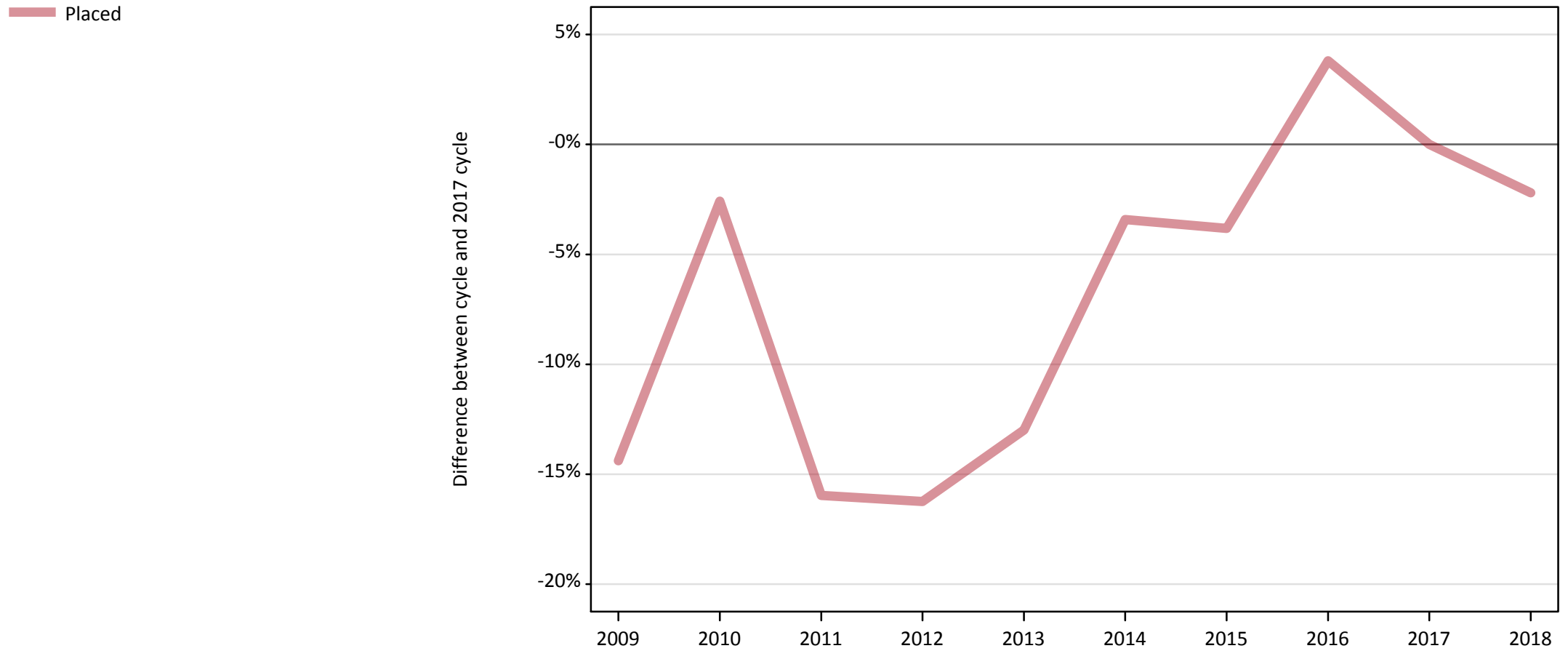
Applicant type	Status	2018
Main scheme	Placed (Clearing)	640
	Placed (Adjustment)	0
	Placed (Firm)	20,230
	Placed (Insurance)	430
	Placed (Other)	930
	Holding offer	6,350
	Free to be placed in Clearing	14,510
Direct to Clearing	Placed (Direct to Clearing)	180
	Other (Direct to Clearing)	420
All applicants	Placed	22,410

AB.2 Summary of nursing applicants who are placed, holding offers or free to be placed in Clearing (all domiciles)



AB.3 Placed applicants to nursing from all domiciles: 4 days after A level results day

Placed applicants to nursing: difference between cycle and 2017 cycle



Note: The percentage change is not plotted in the above chart for groups with fewer than 30 placed applicants in any one cycle.

AB.4 Placed applicants to nursing from all domiciles: 4 days after A level results day

Placed applicants to nursing: applicants at 4 days after A level results day

Applicant type	Status	2009	2010	2011	2012	2013	2014	2015	2016	2017	2018
All applicants	Placed	19,620	22,320	19,260	19,190	19,940	22,130	22,040	23,790	22,920	22,410

AB.5 Placed applicants to nursing from all domiciles: 4 days after A level results day

Placed applicants to nursing: difference between cycle and 2017 cycle

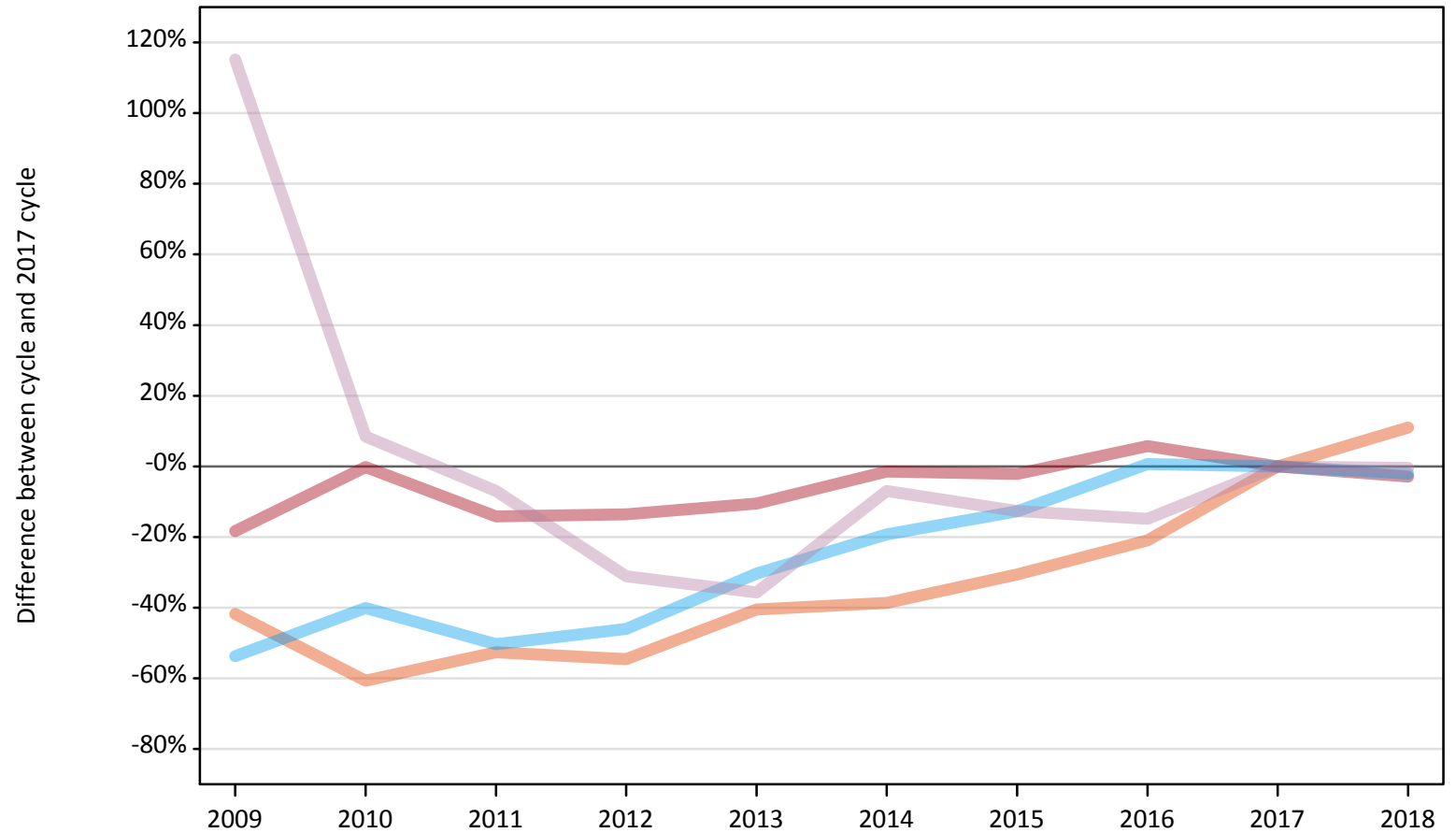
Applicant type	Status	2009	2010	2011	2012	2013	2014	2015	2016	2017	2018
All applicants	Placed	-14%	-3%	-16%	-16%	-13%	-3%	-4%	4%	0%	-2%

Note: The percentage change is not recorded in the above table for groups with fewer than 10 placed applicants in that cycle or in the 2017 cycle.

AB.6 Placed main scheme applicants to nursing from all domiciles: 4 days after A level results day

All Main scheme placed routes (excluding Adjustment): difference between cycle and 2017 cycle

- Placed (Clearing)
- Placed (Firm)
- Placed (Insurance)
- Placed (Other)



Note: The percentage change is not plotted in the above chart for groups with fewer than 30 placed applicants in any one cycle.

AB.7 Placed main scheme applicants to nursing from all domiciles: 4 days after A level results day

All Main scheme placed routes (excluding Adjustment): applicants at 4 days after A level results day

Applicant type	Status	2009	2010	2011	2012	2013	2014	2015	2016	2017	2018
Main scheme	Placed (Clearing)	330	230	270	260	340	350	400	450	570	640
	Placed (Firm)	17,010	20,790	17,870	18,010	18,640	20,530	20,390	22,030	20,830	20,230
	Placed (Insurance)	200	260	220	240	310	360	390	440	440	430
	Placed (Other)	2,010	1,010	870	640	600	870	820	800	940	930

AB.8 Placed main scheme applicants to nursing from all domiciles: 4 days after A level results day

All Main scheme placed routes (excluding Adjustment): difference between cycle and 2017 cycle

Applicant type	Status	2009	2010	2011	2012	2013	2014	2015	2016	2017	2018
Main scheme	Placed (Clearing)	-42%	-61%	-53%	-55%	-41%	-39%	-31%	-21%	0%	11%
	Placed (Firm)	-18%	-0%	-14%	-14%	-11%	-1%	-2%	6%	0%	-3%
	Placed (Insurance)	-54%	-40%	-50%	-46%	-30%	-19%	-13%	1%	0%	-2%
	Placed (Other)	115%	8%	-7%	-31%	-36%	-7%	-13%	-15%	0%	-0%

Note: The percentage change is not recorded in the above table for groups with fewer than 10 placed applicants in that cycle or in the 2017 cycle.

AB.9 Main scheme applicants placed to nursing through adjustment: 4 days after A level results day

Placed through adjustment: difference between cycle and 2017 cycle

[This chart is not part of this report]

AB.10 Main scheme applicants placed to nursing through adjustment: 4 days after A level results day

Placed through adjustment: applicants at 4 days after A level results day

Applicant type	Status	2009	2010	2011	2012	2013	2014	2015	2016	2017	2018
Main scheme	Placed (Adjustment)	0	0	0	0	0	0	0	0	10	0

AB.11 Main scheme applicants placed to nursing through adjustment: 4 days after A level results day

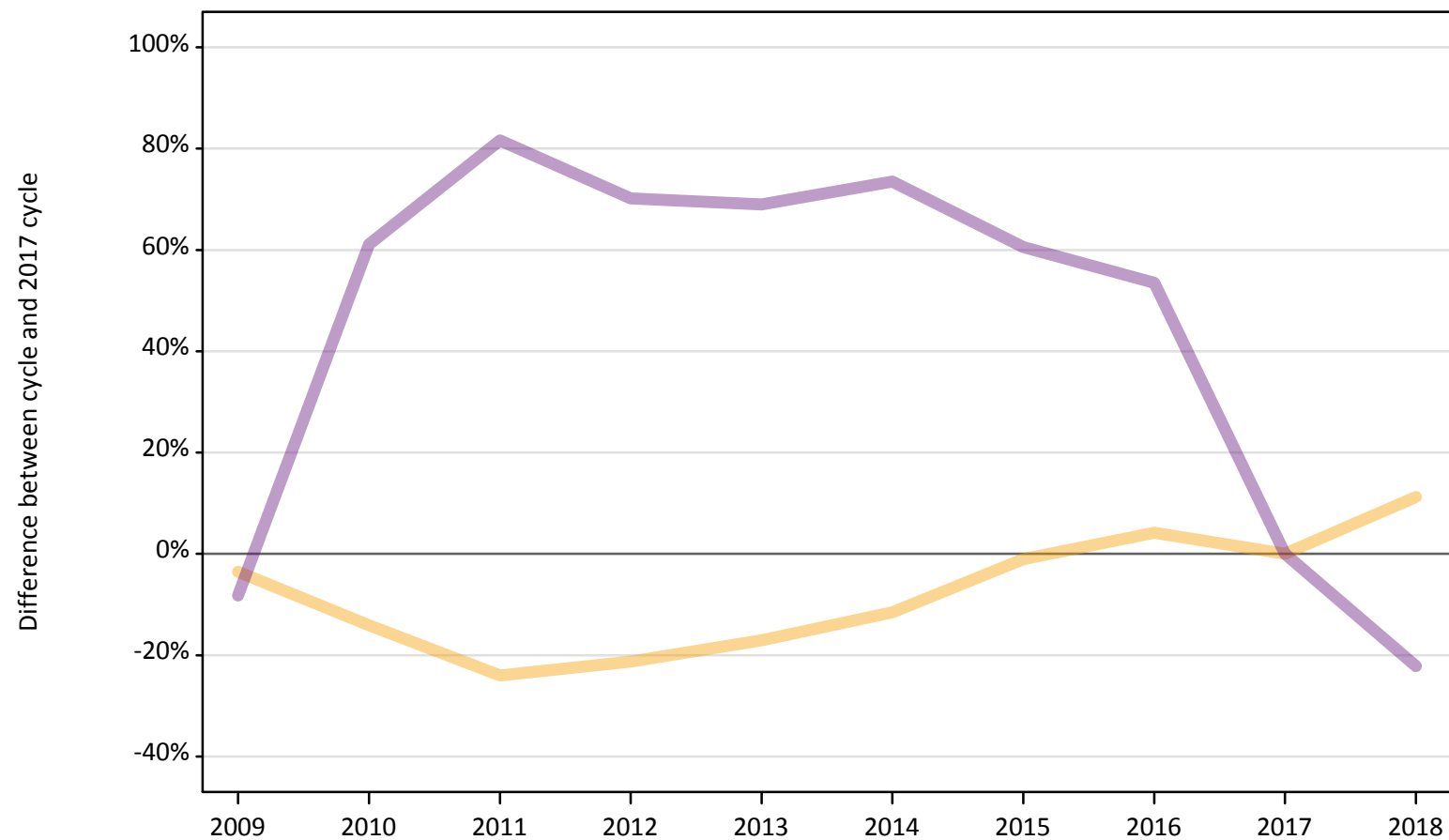
Placed through adjustment: difference between cycle and 2017 cycle

[This table is not part of this report]

AB.12 Main scheme applicants to nursing not currently placed from all domiciles: 4 days after A level results day

Applicants in unplaced states: difference between cycle and 2017 cycle

— Holding offer
— Free to be placed in Clearing



Note: The percentage change is not plotted in the above chart for groups with fewer than 30 unplaced applicants in any one cycle.

AB.13 Main scheme applicants to nursing not currently placed from all domiciles: 4 days after A level results day

Applicants in unplaced states: applicants at 4 days after A level results day

Applicant type	Status	2009	2010	2011	2012	2013	2014	2015	2016	2017	2018
Main scheme	Holding offer	5,510	4,900	4,340	4,490	4,730	5,050	5,650	5,940	5,710	6,350
	Free to be placed in Clearing	17,110	30,030	33,850	31,720	31,500	32,340	29,930	28,620	18,640	14,510

AB.14 Main scheme applicants to nursing not currently placed from all domiciles: 4 days after A level results day

Applicants in unplaced states: difference between cycle and 2017 cycle

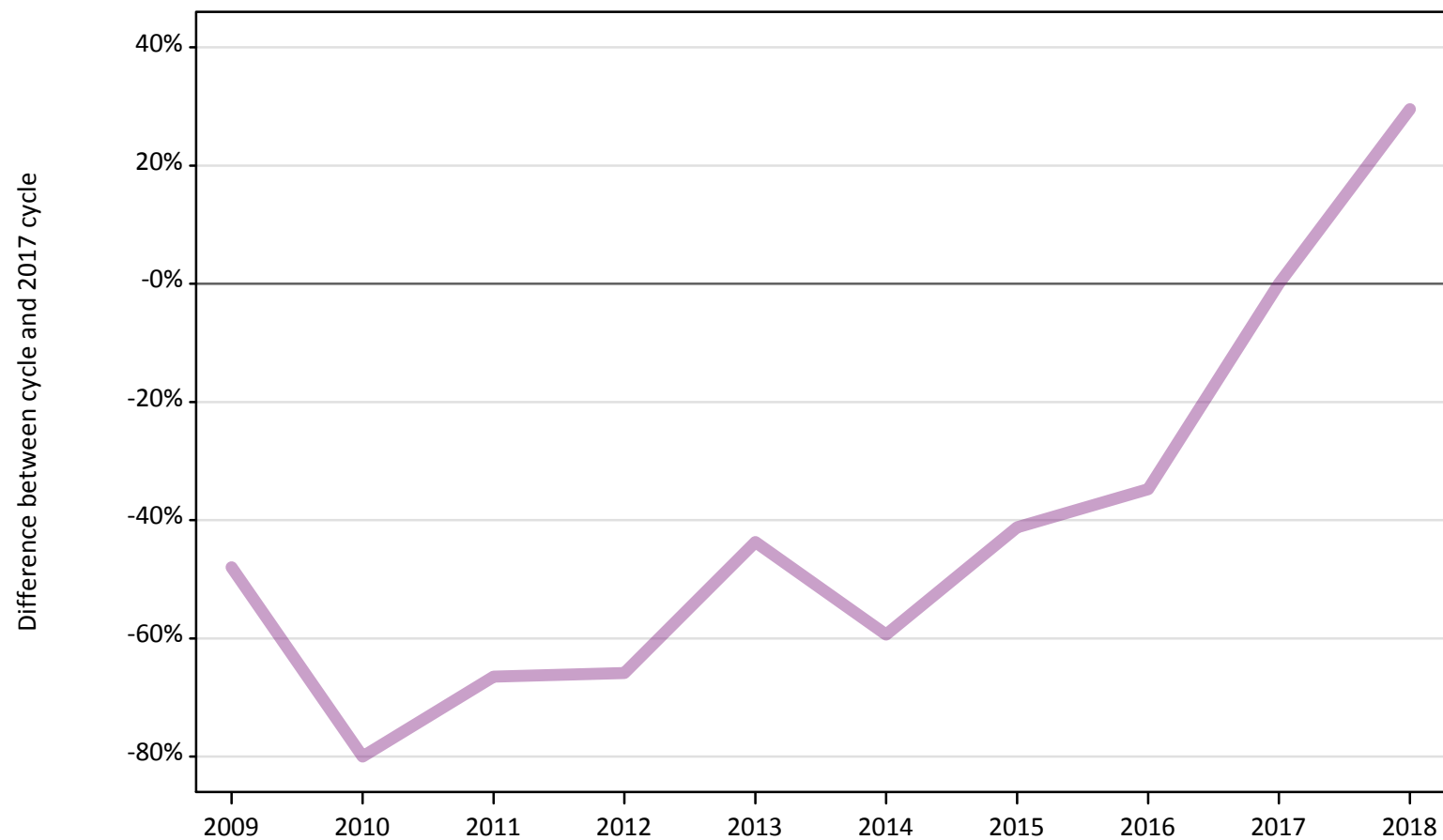
Applicant type	Status	2009	2010	2011	2012	2013	2014	2015	2016	2017	2018
Main scheme	Holding offer	-4%	-14%	-24%	-21%	-17%	-12%	-1%	4%	0%	11%
	Free to be placed in Clearing	-8%	61%	82%	70%	69%	74%	61%	54%	0%	-22%

Note: The percentage change is not recorded in the above table for groups with fewer than 10 unplaced applicants in that cycle or in the 2017 cycle.

AB.15 Direct to Clearing applicants from all domiciles: 4 days after A level results day

Direct to Clearing: difference between cycle and 2017 cycle

- Placed (Direct to Clearing)
- Other (Direct to Clearing)



Note: The percentage change is not plotted in the above chart for groups with fewer than 30 placed applicants in any one cycle.

AB.16 Direct to Clearing applicants from all domiciles: 4 days after A level results day

Direct to Clearing 4 days after A level results day

Applicant type	Status	2009	2010	2011	2012	2013	2014	2015	2016	2017	2018
Direct to Clearing	Placed (Direct to Clearing)	60	30	20	40	50	30	50	70	120	180
	Other (Direct to Clearing)	170	70	110	110	180	130	190	210	330	420

AB.17 Direct to Clearing applicants from all domiciles: 4 days after A level results day

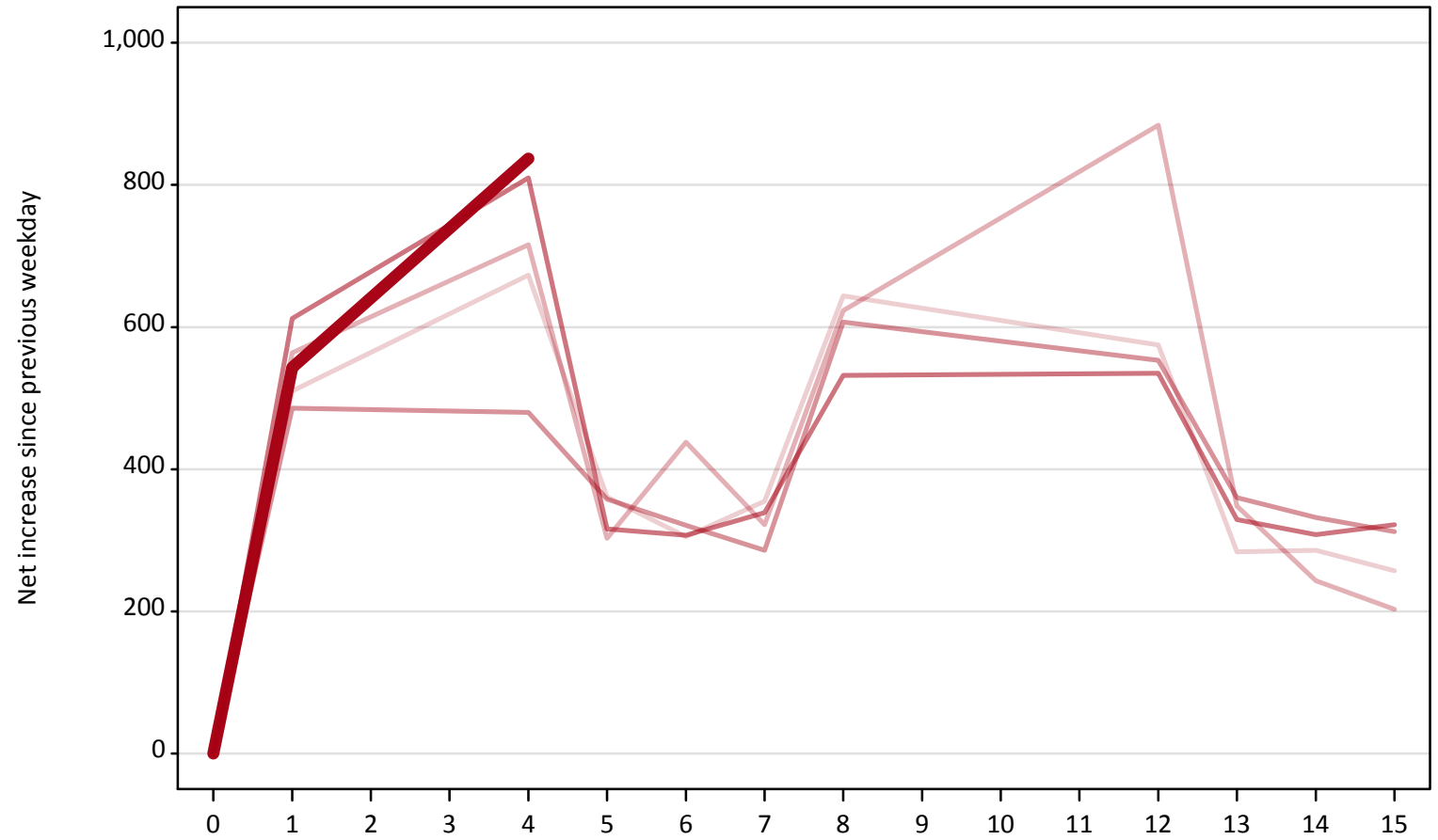
Direct to Clearing: difference between cycle and 2017 cycle

Applicant type	Status	2009	2010	2011	2012	2013	2014	2015	2016	2017	2018
Direct to Clearing	Placed (Direct to Clearing)	-52%	-75%	-81%	-69%	-60%	-80%	-63%	-45%	0%	42%
	Other (Direct to Clearing)	-48%	-80%	-66%	-66%	-44%	-59%	-41%	-35%	0%	30%

Note: The percentage change is not recorded in the above table for groups with fewer than 10 placed applicants in that cycle or in the 2017 cycle.

AB.18 All Placed: Daily net change (from all domiciles)
Net increase since previous weekday (2018 cycle up to 4 days after A level results day)

- 2014
- 2015
- 2016
- 2017
- 2018**

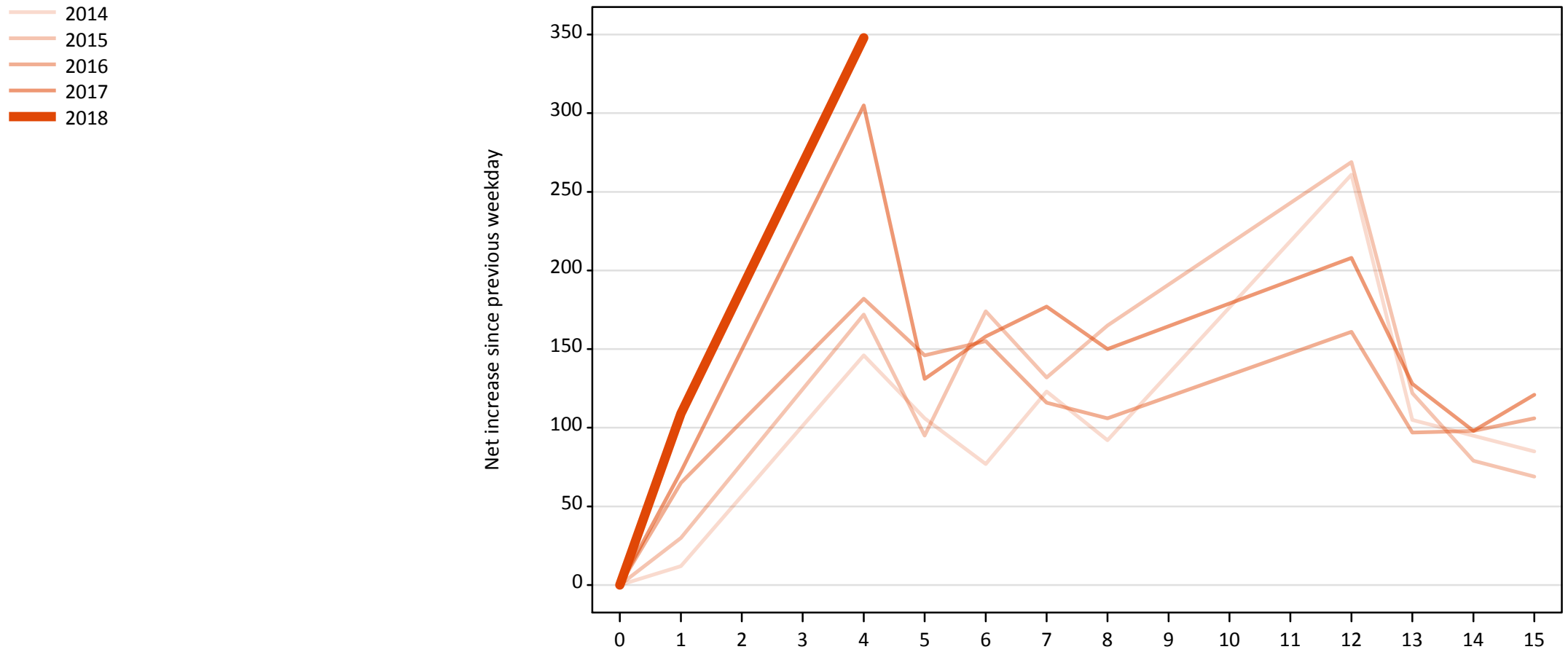


AB.19 All Placed: Daily net change (from all domiciles)

Net increase since previous weekday (2018 cycle up to 4 days after A level results day)

Applicant status, days since A level results day		2014	2015	2016	2017	2018
All Placed	0	0	0	0	0	0
	1	510	560	490	610	540
	4	670	720	480	810	840
	5	360	300	360	320	
	6	310	440	320	310	
	7	360	320	290	340	
	8	640	620	610	530	
	12	580	880	550	540	
	13	280	350	360	330	
	14	290	240	330	310	
	15	260	200	310	320	

AB.20 Placed through Clearing only: Daily net change (from all domiciles)
Net increase since previous weekday (2018 cycle up to 4 days after A level results day)



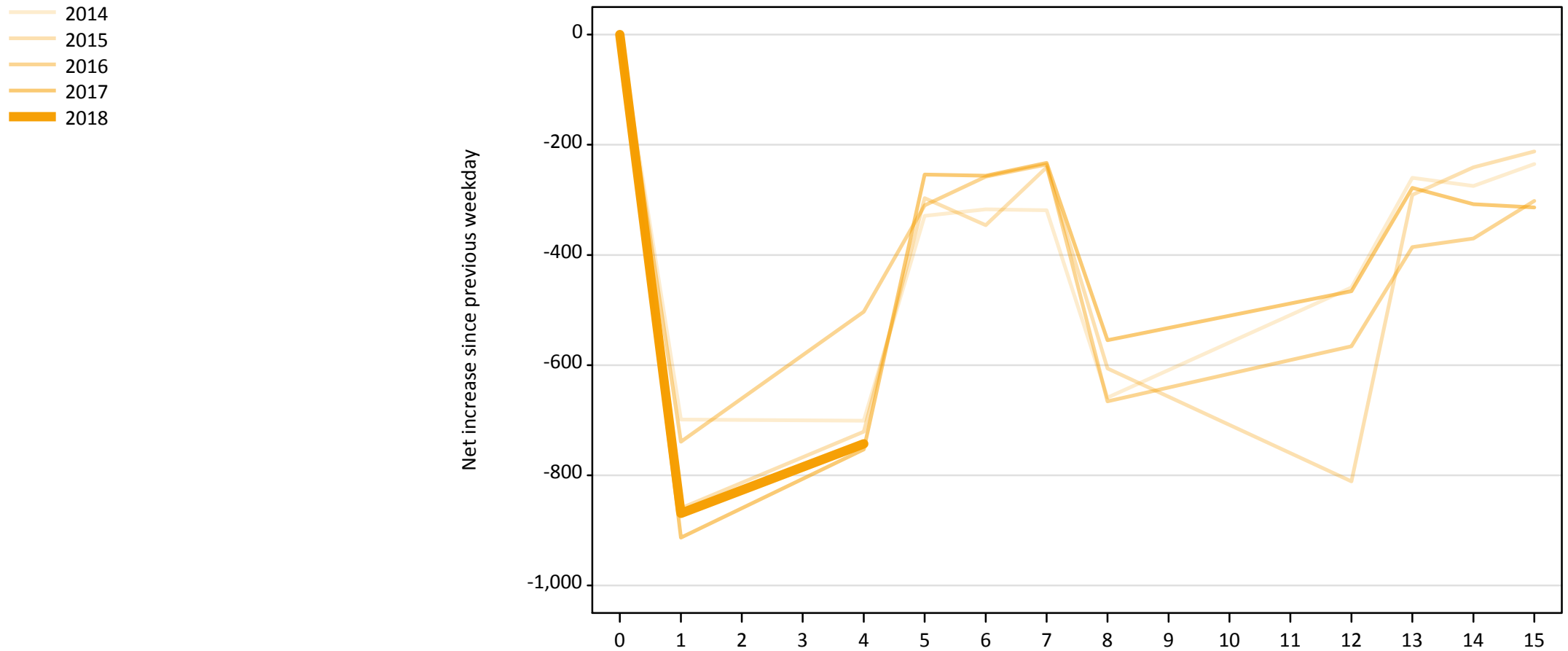
AB.21 Placed through Clearing only: Daily net change (from all domiciles)

Net increase since previous weekday (2018 cycle up to 4 days after A level results day)

Applicant status, days since A level results day		2014	2015	2016	2017	2018
Placed through Clearing only	0	0	0	0	0	0
	1	10	30	70	70	110
	4	150	170	180	310	350
	5	110	100	150	130	
	6	80	170	160	160	
	7	120	130	120	180	
	8	90	170	110	150	
	12	260	270	160	210	
	13	110	120	100	130	
	14	100	80	100	100	
	15	90	70	110	120	

AB.22 Holding Offer: Daily net change (from all domiciles)

Net increase since previous weekday (2018 cycle up to 4 days after A level results day)



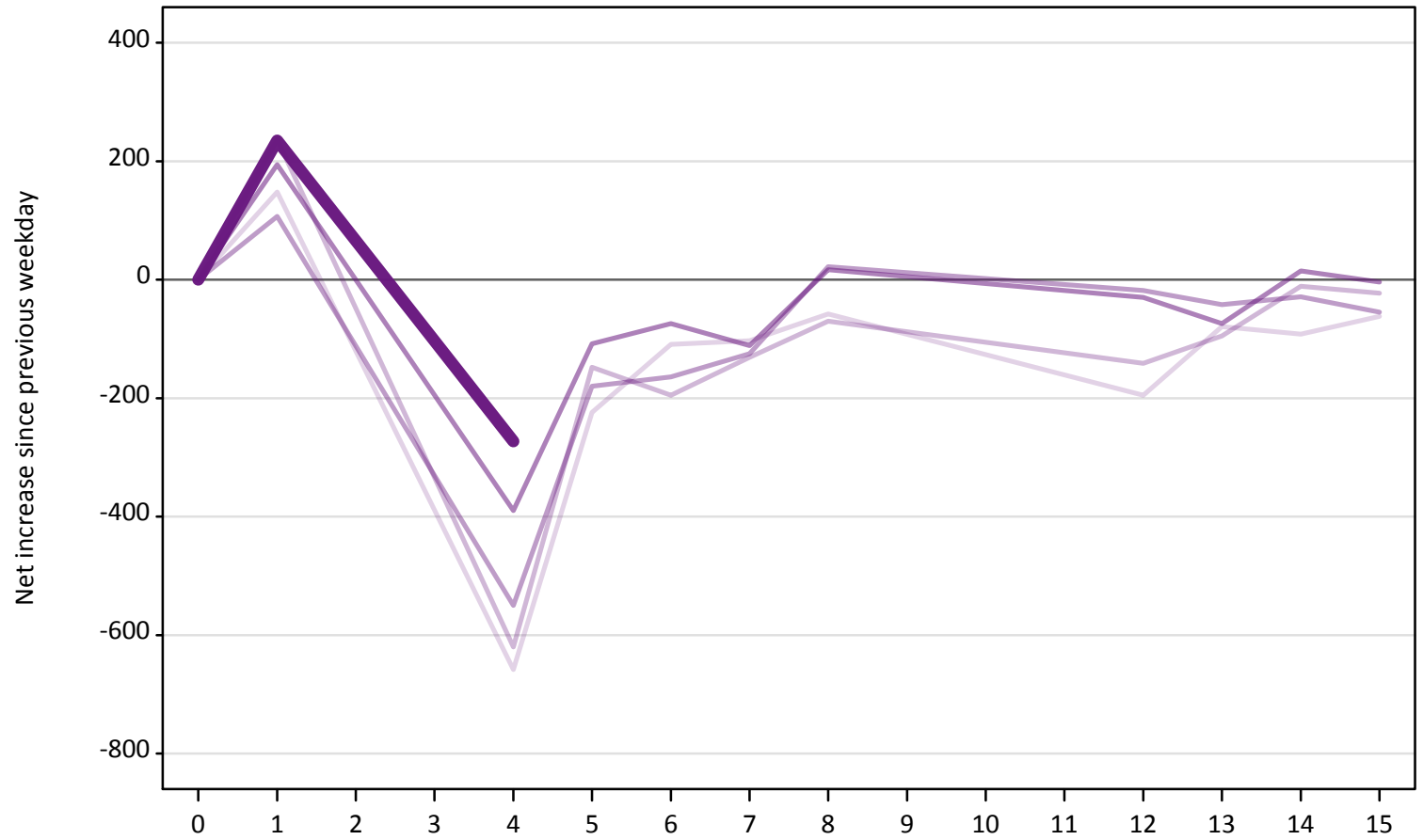
AB.23 Holding Offer: Daily net change (from all domiciles)

Net increase since previous weekday (2018 cycle up to 4 days after A level results day)

Applicant status, days since A level results day		2014	2015	2016	2017	2018
Holding Offer	0	0	0	0	0	0
	1	-700	-860	-740	-910	-870
	4	-700	-720	-500	-750	-740
	5	-330	-300	-310	-250	
	6	-320	-350	-260	-260	
	7	-320	-240	-240	-230	
	8	-660	-610	-670	-560	
	12	-460	-810	-570	-470	
	13	-260	-290	-390	-280	
	14	-280	-240	-370	-310	
	15	-240	-210	-300	-310	

AB.24 Free to be placed in Clearing: Daily net change (from all domiciles)
Net increase since previous weekday (2018 cycle up to 4 days after A level results day)

- 2014
- 2015
- 2016
- 2017
- 2018



AB.25 Free to be placed in Clearing: Daily net change (from all domiciles)
 Net increase since previous weekday (2018 cycle up to 4 days after A level results day)

Applicant status, days since A level results day		2014	2015	2016	2017	2018
Free to be placed in Clearing	0	0	0	0	0	0
	1	150	240	110	190	240
	4	-660	-620	-550	-390	-270
	5	-220	-150	-180	-110	
	6	-110	-200	-160	-70	
	7	-100	-130	-130	-110	
	8	-60	-70	20	20	
	12	-200	-140	-20	-30	
	13	-80	-100	-40	-70	
	14	-90	-10	-30	20	
	15	-60	-20	-60	0	