

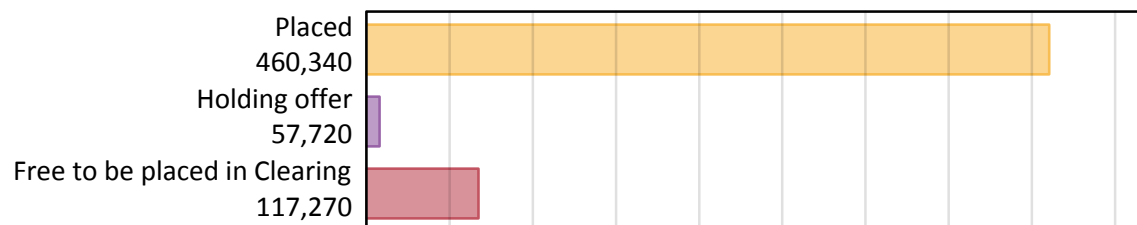
Daily Clearing Analysis: Overview

Analysis at 00:05 on Tuesday 21 August 2018 (5 days after A level results day)

A.1 Applicants by type and status from all domiciles, 2018 cycle

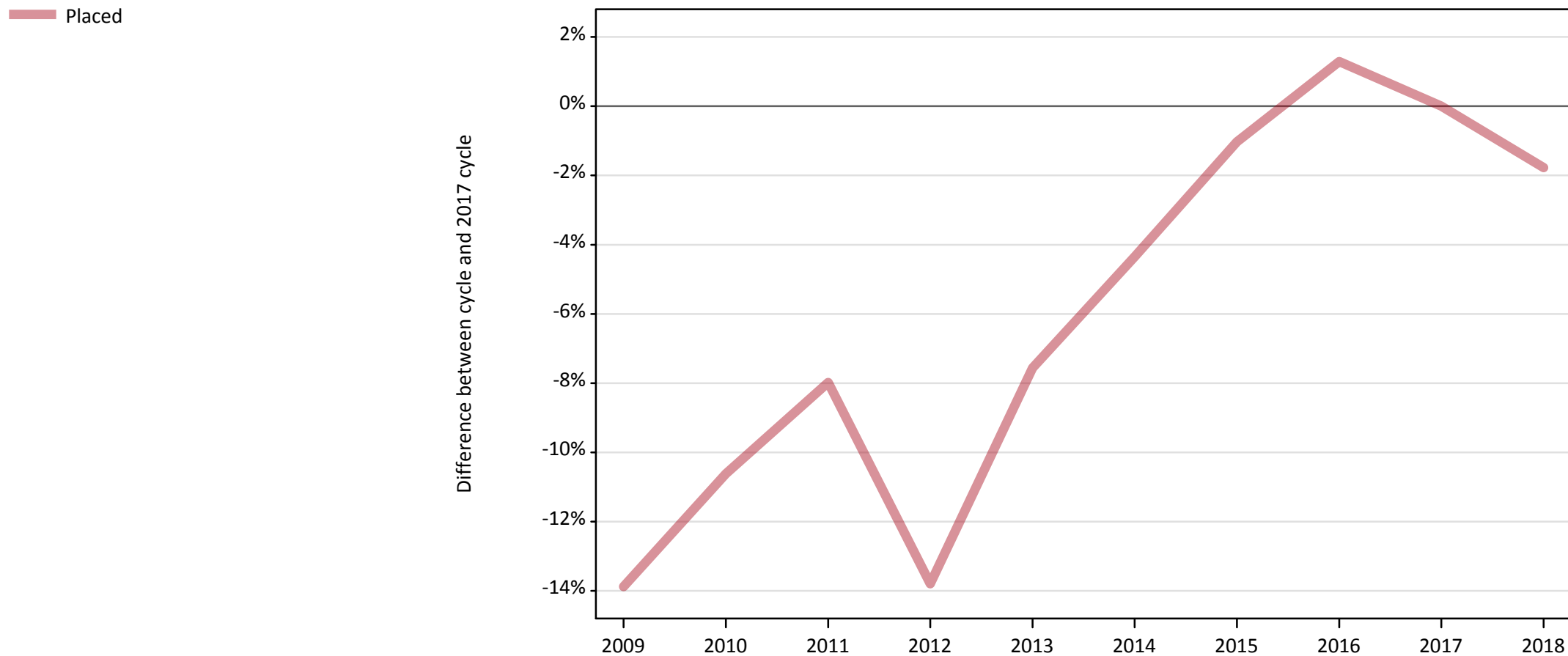
Applicant type	Status	2018
Main scheme	Placed (Clearing)	31,820
	Placed (Adjustment)	900
	Placed (Firm)	374,940
	Placed (Insurance)	32,420
	Placed (Other)	13,140
	Holding offer	57,720
	Free to be placed in Clearing	117,270
Direct to Clearing	Placed (Direct to Clearing)	7,130
	Other (Direct to Clearing)	8,130
All applicants	Placed	460,340

A.2 Summary of applicants who are placed, holding offers or free to be placed in Clearing (all domiciles)



A.3 All placed applicants from all domiciles: 5 days after A level results day

All placed applicants: difference between cycle and 2017 cycle



Note: The percentage change is not plotted in the above chart for groups with fewer than 30 placed applicants in any one cycle.

A.4 All placed applicants from all domiciles: 5 days after A level results day

All placed applicants: applicants at 5 days after A level results day

Applicant type	Status	2009	2010	2011	2012	2013	2014	2015	2016	2017	2018
All applicants	Placed	403,620	418,890	431,250	404,000	433,220	448,280	463,850	474,710	468,670	460,340

A.5 All placed applicants from all domiciles: 5 days after A level results day

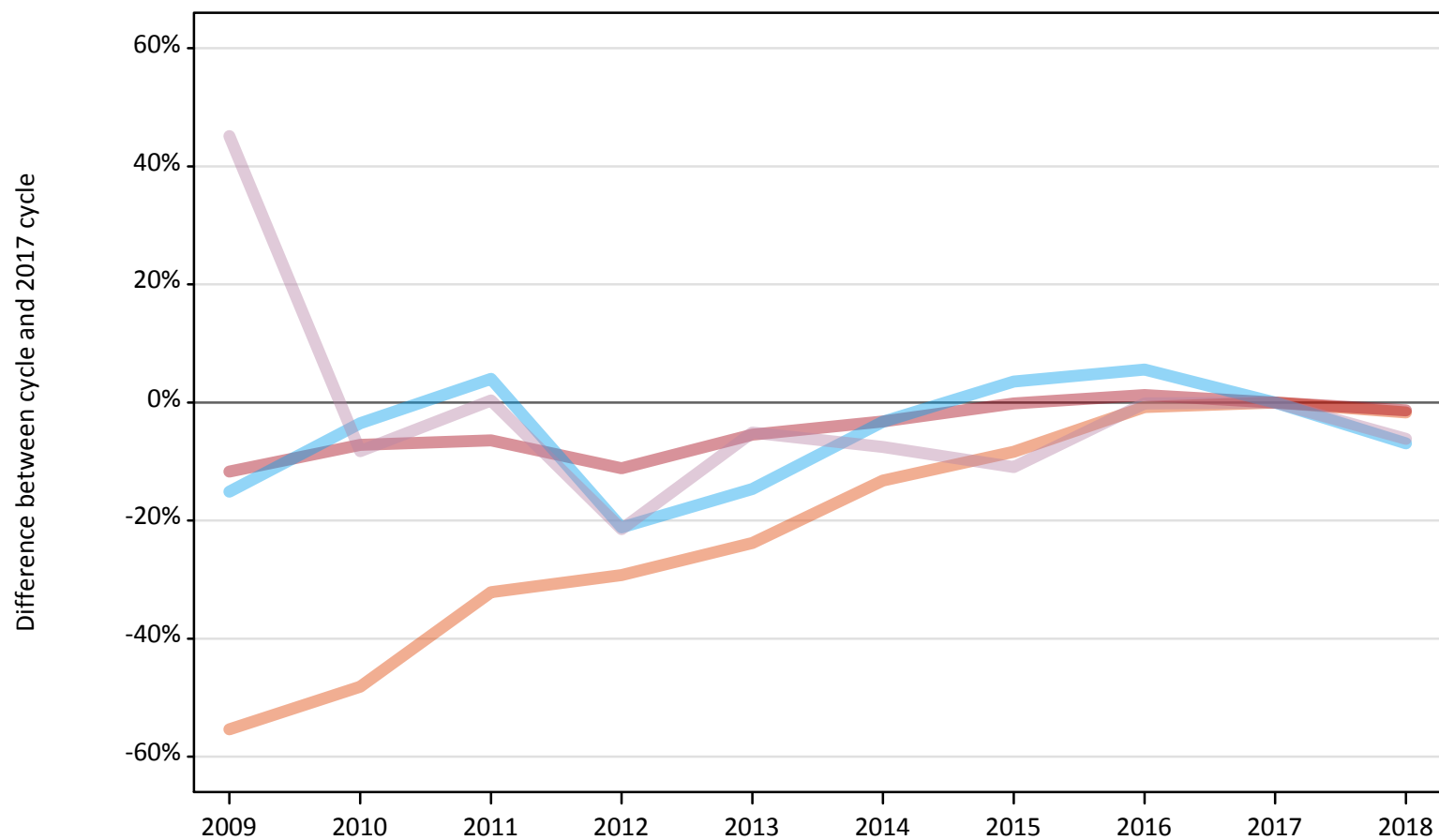
All placed applicants: difference between cycle and 2017 cycle

Applicant type	Status	2009	2010	2011	2012	2013	2014	2015	2016	2017	2018
All applicants	Placed	-14%	-11%	-8%	-14%	-8%	-4%	-1%	1%	0%	-2%

Note: The percentage change is not recorded in the above table for groups with fewer than 10 placed applicants in that cycle or in the 2017 cycle.

A.6 Placed main scheme applicants from all domiciles: 5 days after A level results day
All Main scheme placed routes (excluding Adjustment): difference between cycle and 2017 cycle

- Placed (Clearing)
- Placed (Firm)
- Placed (Insurance)
- Placed (Other)



Note: The percentage change is not plotted in the above chart for groups with fewer than 30 placed applicants in any one cycle.

A.7 Placed main scheme applicants from all domiciles: 5 days after A level results day

All Main scheme placed routes (excluding Adjustment): applicants at 5 days after A level results day

Applicant type	Status	2009	2010	2011	2012	2013	2014	2015	2016	2017	2018
Main scheme	Placed (Clearing)	14,440	16,790	21,970	22,900	24,660	28,080	29,670	32,110	32,370	31,820
	Placed (Firm)	335,560	352,790	355,760	337,800	359,350	367,940	379,490	384,820	380,120	374,940
	Placed (Insurance)	29,570	33,600	36,220	27,460	29,720	33,690	36,060	36,770	34,830	32,420
	Placed (Other)	20,310	12,840	14,050	10,990	13,280	12,940	12,460	13,970	14,000	13,140

A.8 Placed main scheme applicants from all domiciles: 5 days after A level results day

All Main scheme placed routes (excluding Adjustment): difference between cycle and 2017 cycle

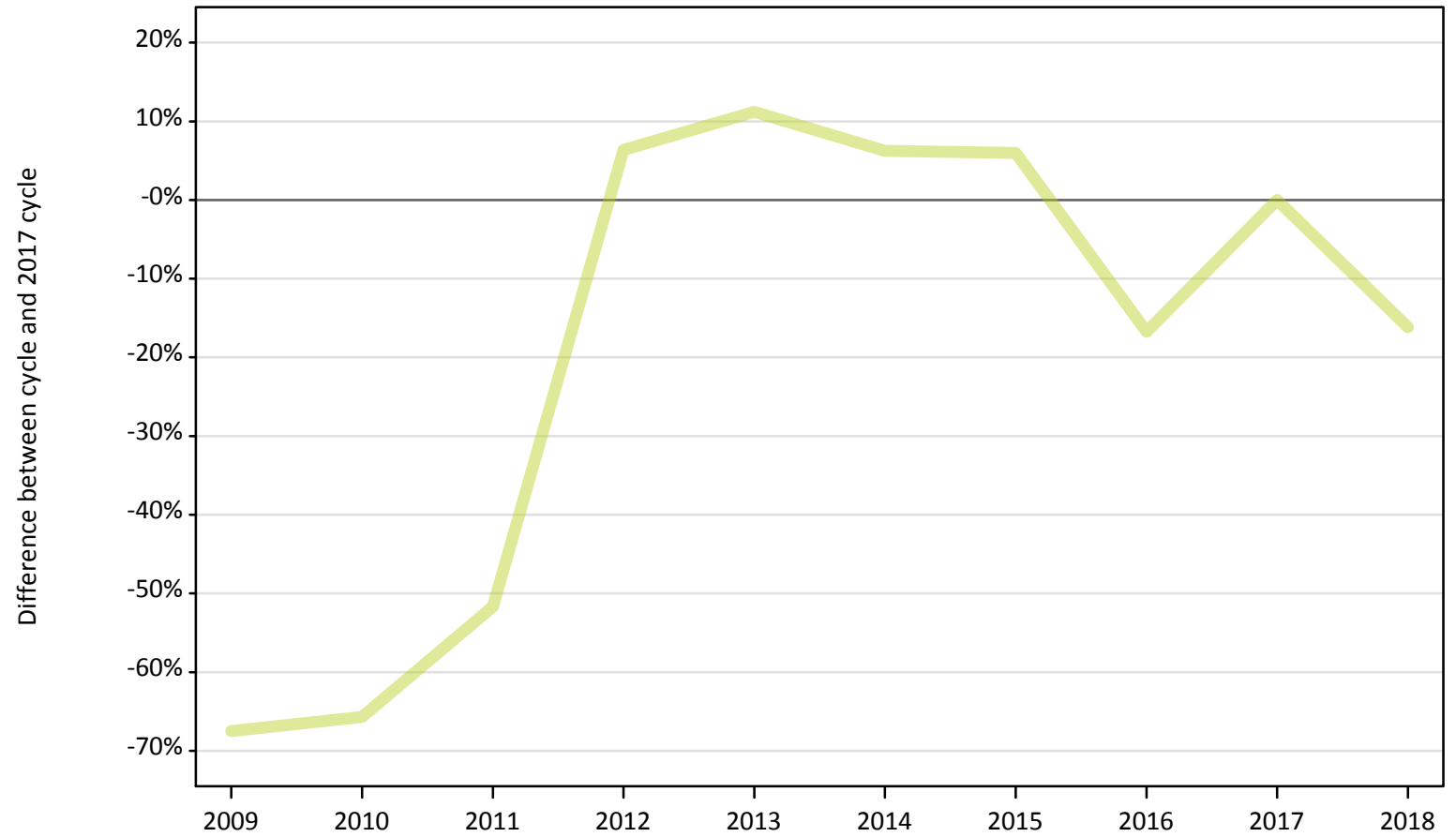
Applicant type	Status	2009	2010	2011	2012	2013	2014	2015	2016	2017	2018
Main scheme	Placed (Clearing)	-55%	-48%	-32%	-29%	-24%	-13%	-8%	-1%	0%	-2%
	Placed (Firm)	-12%	-7%	-6%	-11%	-5%	-3%	-0%	1%	0%	-1%
	Placed (Insurance)	-15%	-4%	4%	-21%	-15%	-3%	4%	6%	0%	-7%
	Placed (Other)	45%	-8%	0%	-21%	-5%	-8%	-11%	-0%	0%	-6%

Note: The percentage change is not recorded in the above table for groups with fewer than 10 placed applicants in that cycle or in the 2017 cycle.

A.9 Main scheme applicants placed through adjustment: 5 days after A level results day

Placed through adjustment: difference between cycle and 2017 cycle

Placed (Adjustment)



Note: The percentage change is not plotted in the above chart for groups with fewer than 30 placed applicants in any one cycle.

A.10 Main scheme applicants placed through adjustment: 5 days after A level results day

Placed through adjustment: applicants at 5 days after A level results day

Applicant type	Status	2009	2010	2011	2012	2013	2014	2015	2016	2017	2018
Main scheme	Placed (Adjustment)	350	370	520	1,140	1,190	1,140	1,130	890	1,070	900

A.11 Main scheme applicants placed through adjustment: 5 days after A level results day

Placed through adjustment: difference between cycle and 2017 cycle

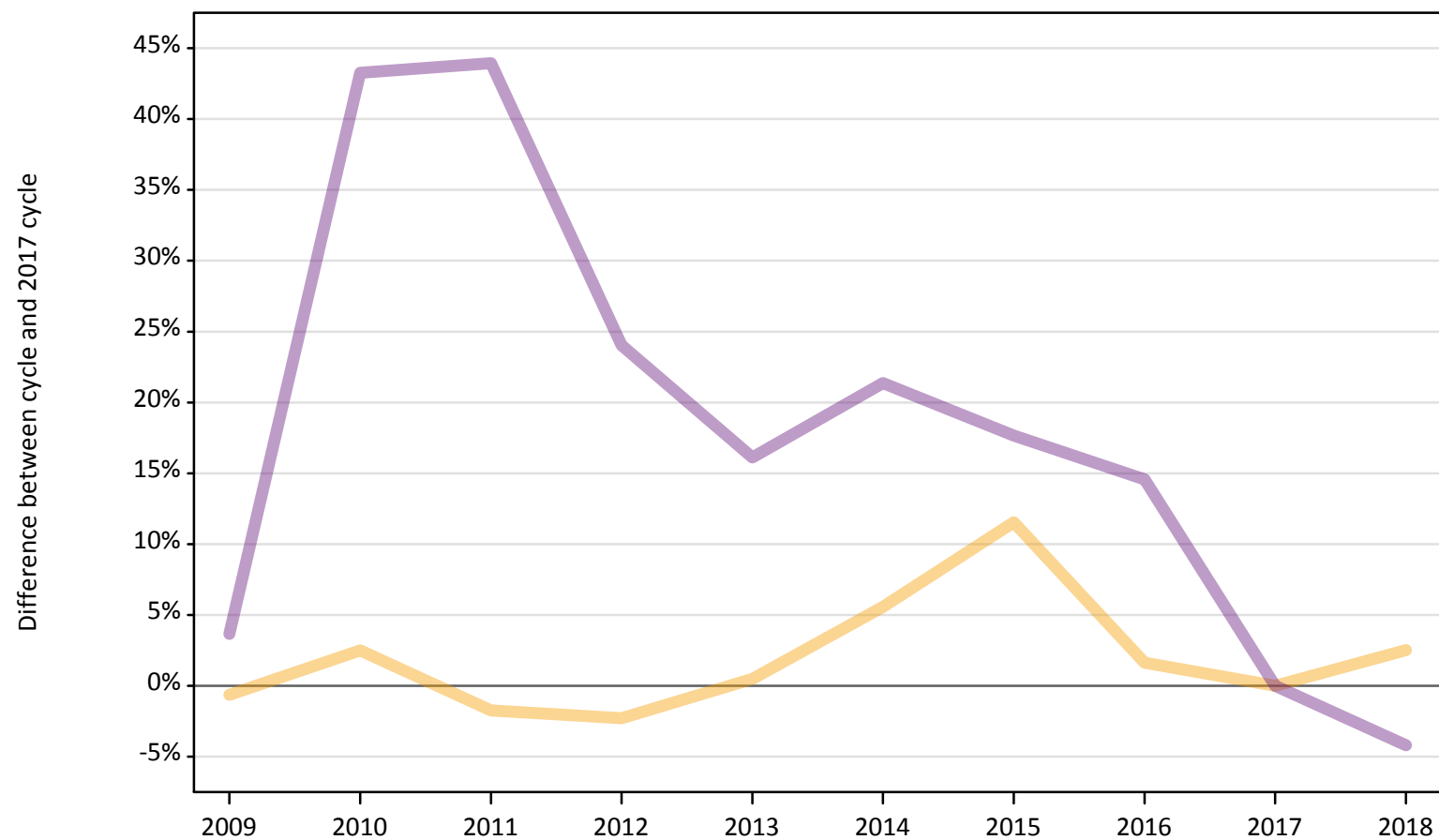
Applicant type	Status	2009	2010	2011	2012	2013	2014	2015	2016	2017	2018
Main scheme	Placed (Adjustment)	-67%	-66%	-52%	6%	11%	6%	6%	-17%	0%	-16%

Note: The percentage change is not recorded in the above table for groups with fewer than 10 placed applicants in that cycle or in the 2017 cycle.

A.12 Main scheme applicants not currently placed from all domiciles: 5 days after A level results day

Applicants in unplaced states: difference between cycle and 2017 cycle

— Holding offer
— Free to be placed in Clearing



Note: The percentage change is not plotted in the above chart for groups with fewer than 30 unplaced applicants in any one cycle.

A.13 Main scheme applicants not currently placed from all domiciles: 5 days after A level results day

Applicants in unplaced states: applicants at 5 days after A level results day

Applicant type	Status	2009	2010	2011	2012	2013	2014	2015	2016	2017	2018
Main scheme	Holding offer	55,940	57,710	55,320	55,020	56,580	59,440	62,800	57,220	56,300	57,720
	Free to be placed in Clearing	126,890	175,380	176,190	151,850	142,140	148,580	144,020	140,240	122,410	117,270

A.14 Main scheme applicants not currently placed from all domiciles: 5 days after A level results day

Applicants in unplaced states: difference between cycle and 2017 cycle

Applicant type	Status	2009	2010	2011	2012	2013	2014	2015	2016	2017	2018
Main scheme	Holding offer	-1%	2%	-2%	-2%	0%	6%	12%	2%	0%	3%
	Free to be placed in Clearing	4%	43%	44%	24%	16%	21%	18%	15%	0%	-4%

Note: The percentage change is not recorded in the above table for groups with fewer than 10 unplaced applicants in that cycle or in the 2017 cycle.

A.15 Direct to Clearing applicants from all domiciles: 5 days after A level results day

Direct to Clearing: difference between cycle and 2017 cycle



Note: The percentage change is not plotted in the above chart for groups with fewer than 30 placed applicants in any one cycle.

A.16 Direct to Clearing applicants from all domiciles: 5 days after A level results day

Direct to Clearing 5 days after A level results day

Applicant type	Status	2009	2010	2011	2012	2013	2014	2015	2016	2017	2018
Direct to Clearing	Placed (Direct to Clearing)	3,380	2,500	2,740	3,710	5,020	4,480	5,040	6,140	6,290	7,130
	Other (Direct to Clearing)	11,630	9,500	9,160	7,750	8,750	7,650	8,450	8,040	8,240	8,130

A.17 Direct to Clearing applicants from all domiciles: 5 days after A level results day

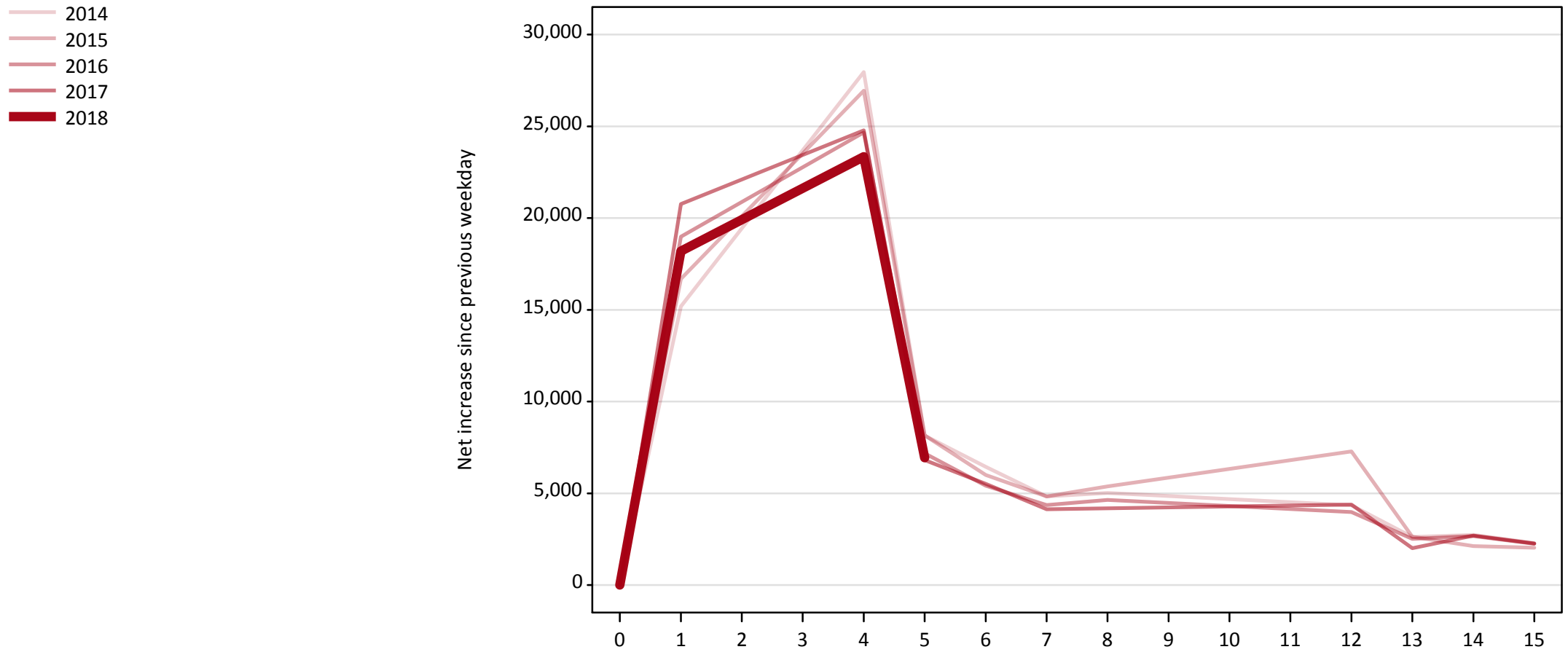
Direct to Clearing: difference between cycle and 2017 cycle

Applicant type	Status	2009	2010	2011	2012	2013	2014	2015	2016	2017	2018
Direct to Clearing	Placed (Direct to Clearing)	-46%	-60%	-56%	-41%	-20%	-29%	-20%	-2%	0%	13%
	Other (Direct to Clearing)	41%	15%	11%	-6%	6%	-7%	3%	-2%	0%	-1%

Note: The percentage change is not recorded in the above table for groups with fewer than 10 placed applicants in that cycle or in the 2017 cycle.

A.18 All Placed: Daily net change (from all domiciles)

Net increase since previous weekday (2018 cycle up to 5 days after A level results day)

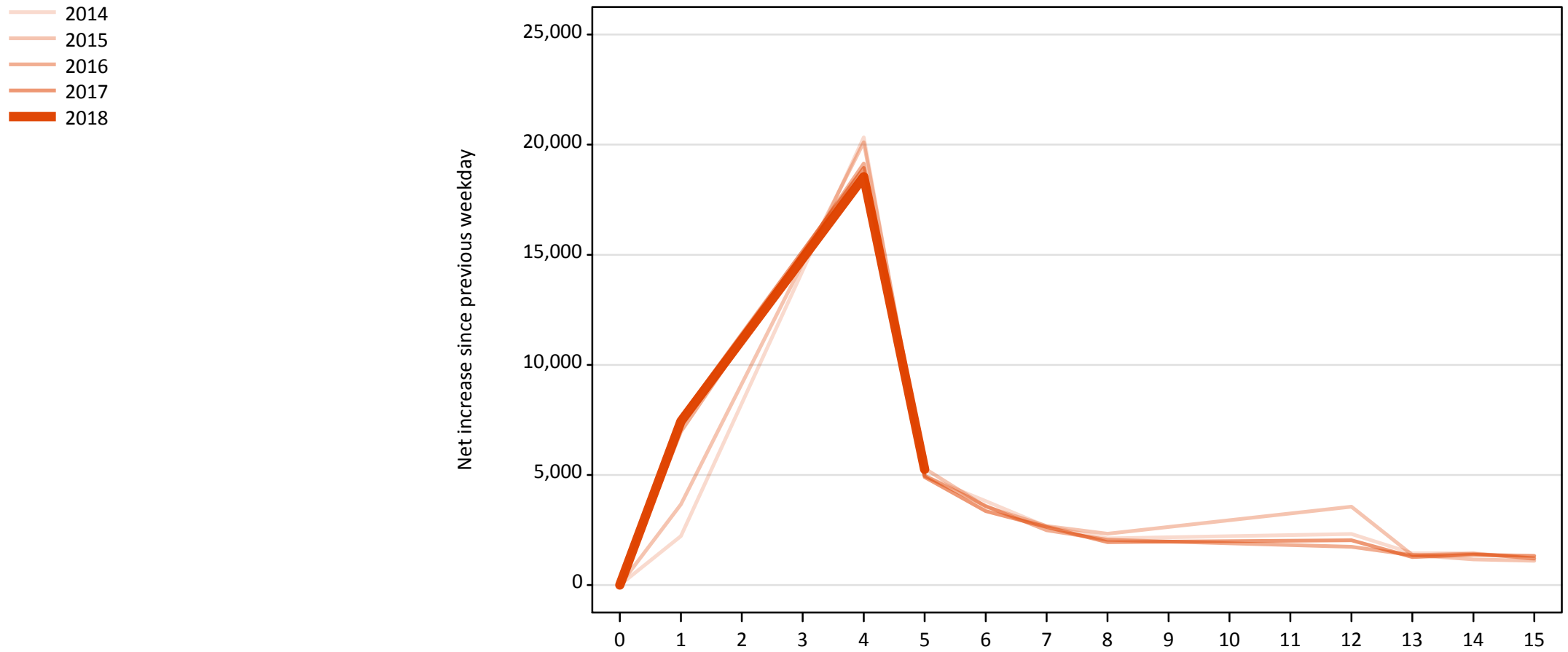


A.19 All Placed: Daily net change (from all domiciles)

Net increase since previous weekday (2018 cycle up to 5 days after A level results day)

Applicant status, days since A level results day		2014	2015	2016	2017	2018
All Placed	0	0	0	0	0	0
	1	15,180	16,680	18,990	20,770	18,200
	4	27,960	26,940	24,670	24,790	23,340
	5	8,140	8,160	7,170	6,810	6,940
	6	6,450	6,000	5,410	5,510	
	7	4,830	4,830	4,350	4,140	
	8	5,020	5,370	4,640	4,190	
	12	4,340	7,280	3,980	4,380	
	13	2,620	2,630	2,510	2,010	
	14	2,730	2,120	2,660	2,700	
	15	2,280	2,030	2,250	2,260	

A.20 Placed through Clearing only: Daily net change (from all domiciles)
Net increase since previous weekday (2018 cycle up to 5 days after A level results day)



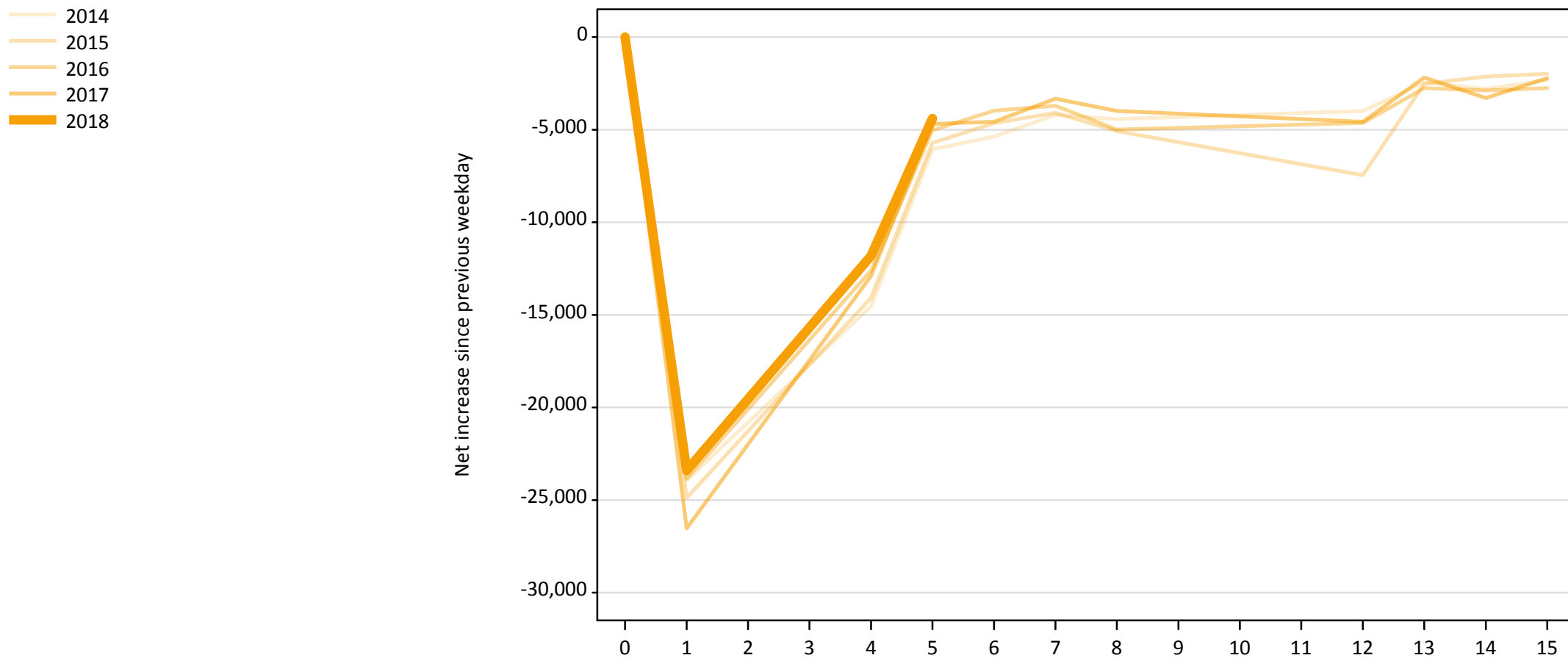
A.21 Placed through Clearing only: Daily net change (from all domiciles)

Net increase since previous weekday (2018 cycle up to 5 days after A level results day)

Applicant status, days since A level results day		2014	2015	2016	2017	2018
Placed through Clearing only	0	0	0	0	0	0
	1	2,220	3,660	6,970	7,640	7,440
	4	20,340	20,110	19,140	18,940	18,550
	5	4,950	5,290	4,960	4,910	5,250
	6	3,810	3,560	3,590	3,360	
	7	2,650	2,680	2,480	2,640	
	8	2,120	2,330	2,050	1,950	
	12	2,310	3,550	1,740	2,030	
	13	1,450	1,370	1,350	1,270	
	14	1,450	1,160	1,420	1,370	
	15	1,190	1,100	1,210	1,320	

A.22 Holding Offer: Daily net change (from all domiciles)

Net increase since previous weekday (2018 cycle up to 5 days after A level results day)

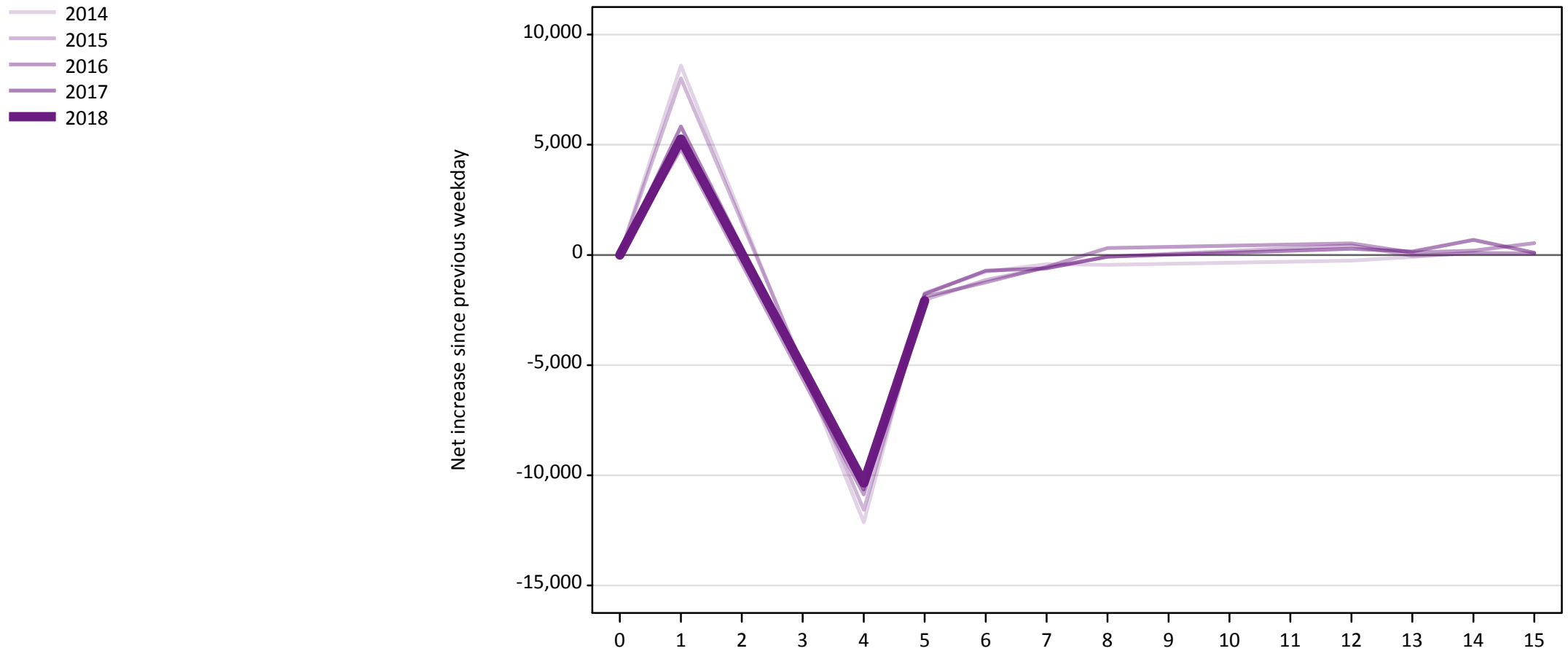


A.23 Holding Offer: Daily net change (from all domiciles)

Net increase since previous weekday (2018 cycle up to 5 days after A level results day)

Applicant status, days since A level results day	2014	2015	2016	2017	2018	
Holding Offer	0	0	0	0	0	
	1	-23,940	-24,880	-23,840	-26,530	-23,410
	4	-14,530	-14,080	-12,600	-12,900	-11,810
	5	-6,060	-5,720	-5,030	-4,680	-4,390
	6	-5,380	-4,650	-3,970	-4,580	
	7	-4,210	-4,090	-3,700	-3,330	
	8	-4,430	-5,080	-4,990	-3,990	
	12	-3,980	-7,460	-4,640	-4,580	
	13	-2,450	-2,520	-2,760	-2,180	
	14	-2,790	-2,130	-2,880	-3,280	
	15	-2,330	-1,980	-2,760	-2,230	

A.24 Free to be placed in Clearing: Daily net change (from all domiciles)
Net increase since previous weekday (2018 cycle up to 5 days after A level results day)



A.25 Free to be placed in Clearing: Daily net change (from all domiciles)

Net increase since previous weekday (2018 cycle up to 5 days after A level results day)

Applicant status, days since A level results day		2014	2015	2016	2017	2018
Free to be placed in Clearing	0	0	0	0	0	0
	1	8,600	8,010	4,820	5,830	5,260
	4	-12,130	-11,570	-10,870	-10,650	-10,350
	5	-1,720	-2,040	-1,900	-1,780	-2,080
	6	-770	-1,130	-1,250	-710	
	7	-420	-570	-540	-610	
	8	-450	-80	310	-80	
	12	-260	430	530	280	
	13	-90	-40	120	150	
	14	100	80	200	680	
	15	90	60	530	100	