

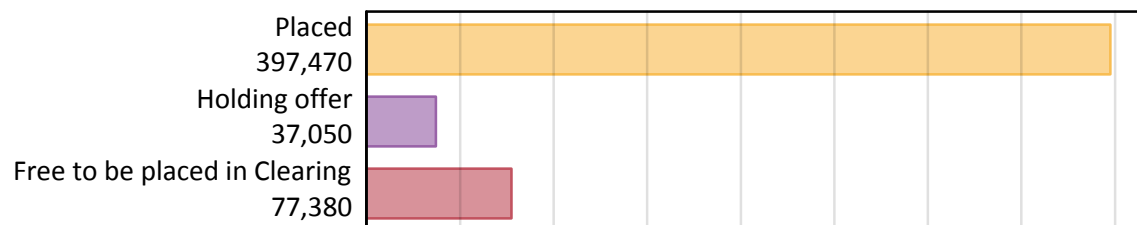
Daily Clearing Analysis: Overview

Analysis at 00:05 on Tuesday 21 August 2018 (5 days after A level results day)

A.1 Applicants by type and status from the UK, 2018 cycle

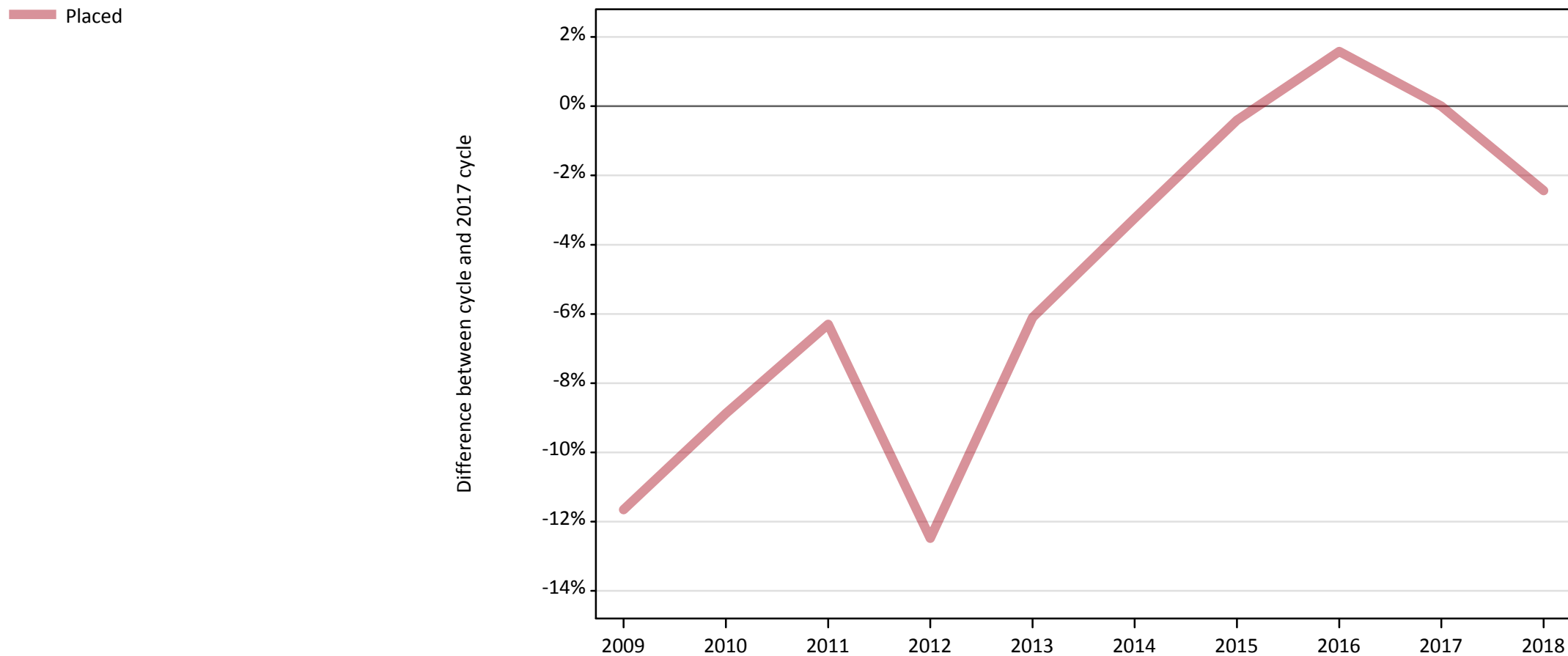
Applicant type	Status	2018
Main scheme	Placed (Clearing)	28,610
	Placed (Adjustment)	830
	Placed (Firm)	324,400
	Placed (Insurance)	27,010
	Placed (Other)	10,240
	Holding offer	37,050
	Free to be placed in Clearing	77,380
Direct to Clearing	Placed (Direct to Clearing)	6,380
	Other (Direct to Clearing)	6,990
All applicants	Placed	397,470

A.2 Summary of applicants who are placed, holding offers or free to be placed in Clearing (the UK)



A.3 All placed applicants from the UK: 5 days after A level results day

All placed applicants: difference between cycle and 2017 cycle



Note: The percentage change is not plotted in the above chart for groups with fewer than 30 placed applicants in any one cycle.

A.4 All placed applicants from the UK: 5 days after A level results day

All placed applicants: applicants at 5 days after A level results day

Applicant type	Status	2009	2010	2011	2012	2013	2014	2015	2016	2017	2018
All applicants	Placed	359,930	371,230	381,740	356,560	382,540	394,220	405,760	413,840	407,400	397,470

A.5 All placed applicants from the UK: 5 days after A level results day

All placed applicants: difference between cycle and 2017 cycle

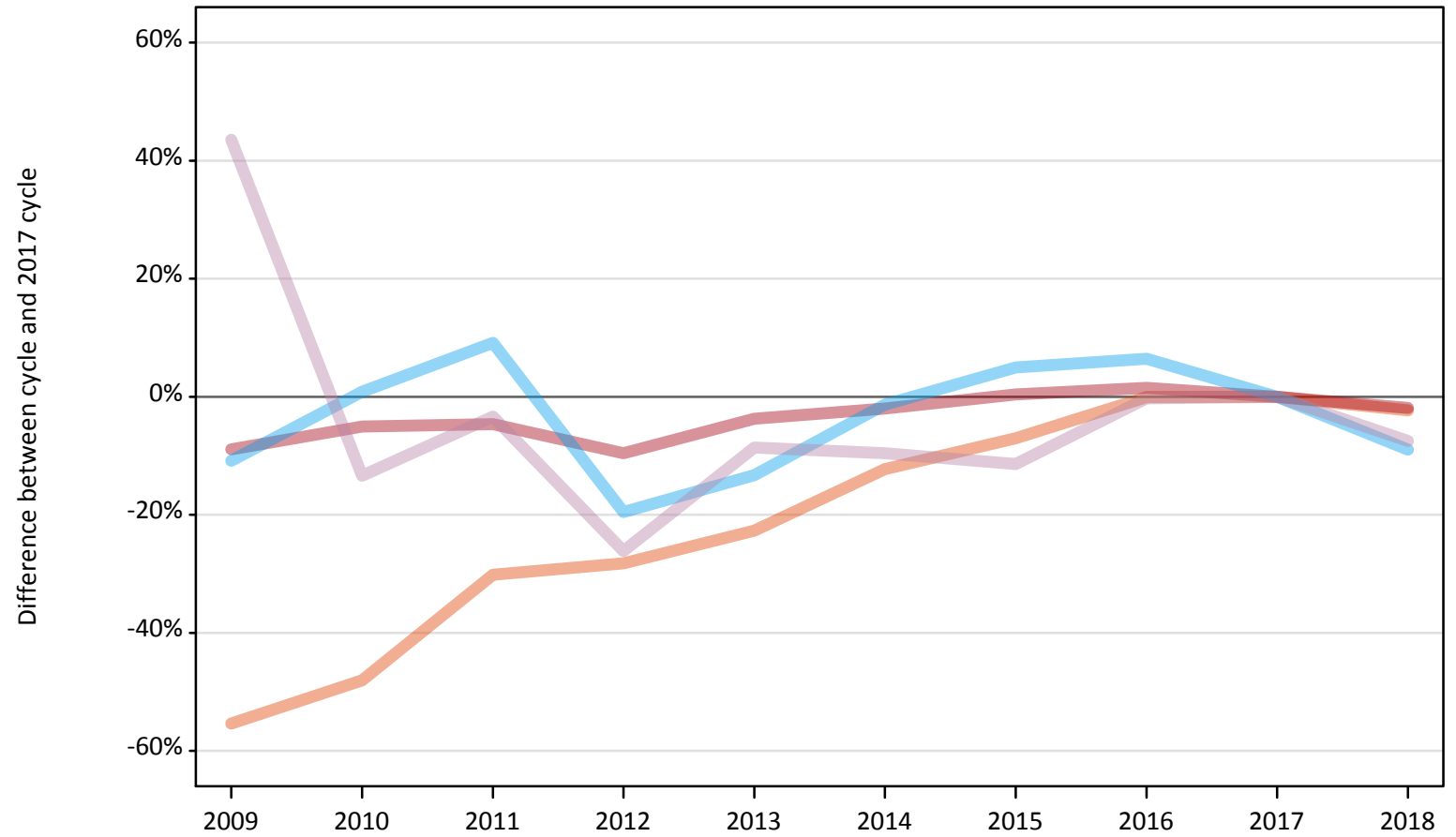
Applicant type	Status	2009	2010	2011	2012	2013	2014	2015	2016	2017	2018
All applicants	Placed	-12%	-9%	-6%	-12%	-6%	-3%	-0%	2%	0%	-2%

Note: The percentage change is not recorded in the above table for groups with fewer than 10 placed applicants in that cycle or in the 2017 cycle.

A.6 Placed main scheme applicants from the UK: 5 days after A level results day

All Main scheme placed routes (excluding Adjustment): difference between cycle and 2017 cycle

- Placed (Clearing)
- Placed (Firm)
- Placed (Insurance)
- Placed (Other)



Note: The percentage change is not plotted in the above chart for groups with fewer than 30 placed applicants in any one cycle.

A.7 Placed main scheme applicants from the UK: 5 days after A level results day

All Main scheme placed routes (excluding Adjustment): applicants at 5 days after A level results day

Applicant type	Status	2009	2010	2011	2012	2013	2014	2015	2016	2017	2018
Main scheme	Placed (Clearing)	13,070	15,210	20,440	21,000	22,630	25,690	27,220	29,260	29,280	28,610
	Placed (Firm)	301,190	313,990	315,290	299,110	318,410	324,160	332,020	335,620	330,720	324,400
	Placed (Insurance)	26,460	29,930	32,380	23,870	25,740	29,280	31,140	31,590	29,680	27,010
	Placed (Other)	15,890	9,590	10,700	8,180	10,120	10,010	9,810	11,040	11,070	10,240

A.8 Placed main scheme applicants from the UK: 5 days after A level results day

All Main scheme placed routes (excluding Adjustment): difference between cycle and 2017 cycle

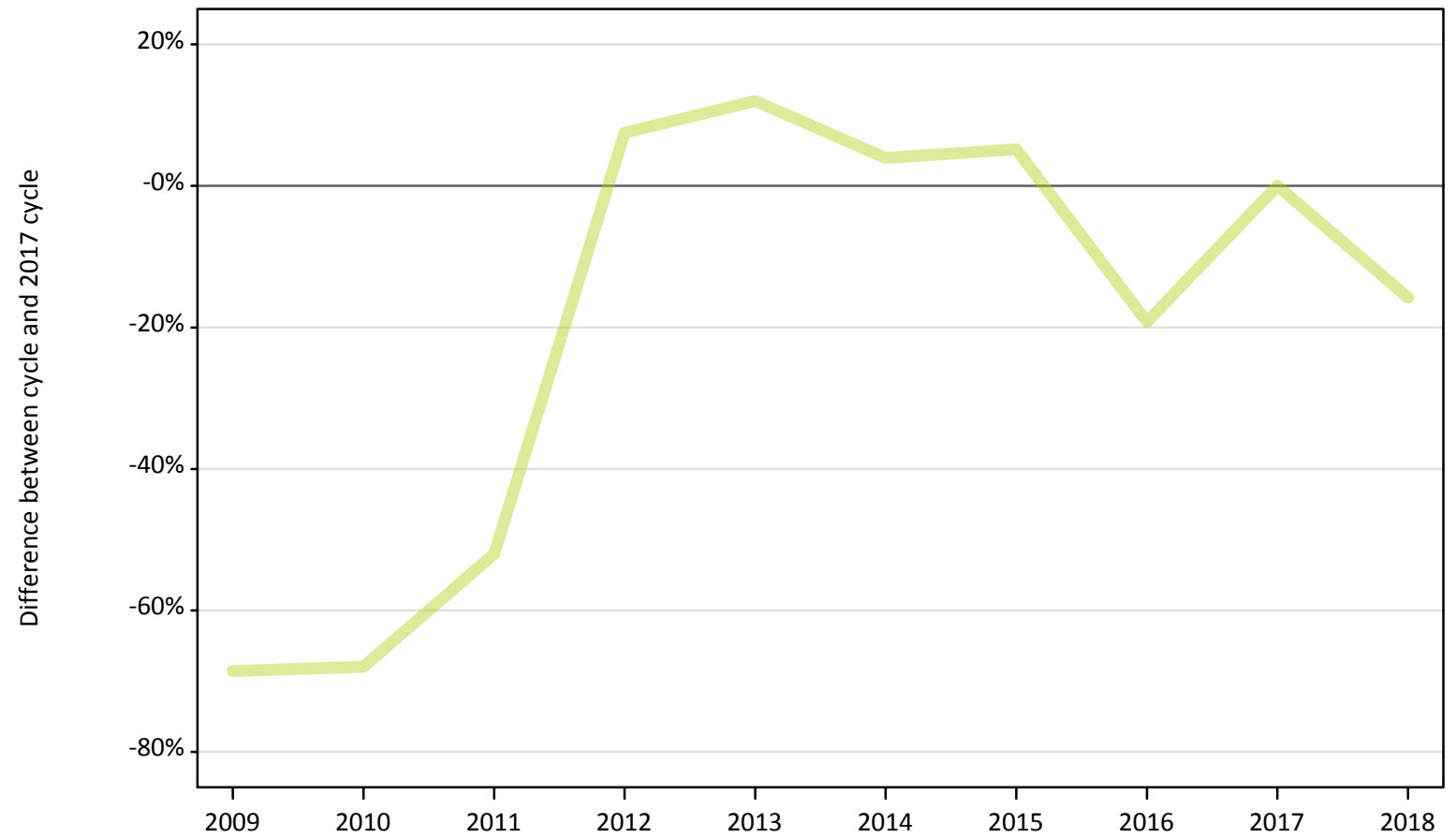
Applicant type	Status	2009	2010	2011	2012	2013	2014	2015	2016	2017	2018
Main scheme	Placed (Clearing)	-55%	-48%	-30%	-28%	-23%	-12%	-7%	-0%	0%	-2%
	Placed (Firm)	-9%	-5%	-5%	-10%	-4%	-2%	0%	1%	0%	-2%
	Placed (Insurance)	-11%	1%	9%	-20%	-13%	-1%	5%	6%	0%	-9%
	Placed (Other)	44%	-13%	-3%	-26%	-9%	-10%	-11%	-0%	0%	-7%

Note: The percentage change is not recorded in the above table for groups with fewer than 10 placed applicants in that cycle or in the 2017 cycle.

A.9 Main scheme applicants placed through adjustment: 5 days after A level results day

Placed through adjustment: difference between cycle and 2017 cycle

Placed (Adjustment)



Note: The percentage change is not plotted in the above chart for groups with fewer than 30 placed applicants in any one cycle.

A.10 Main scheme applicants placed through adjustment: 5 days after A level results day

Placed through adjustment: applicants at 5 days after A level results day

Applicant type	Status	2009	2010	2011	2012	2013	2014	2015	2016	2017	2018
Main scheme	Placed (Adjustment)	310	320	470	1,060	1,100	1,020	1,030	790	980	830

A.11 Main scheme applicants placed through adjustment: 5 days after A level results day

Placed through adjustment: difference between cycle and 2017 cycle

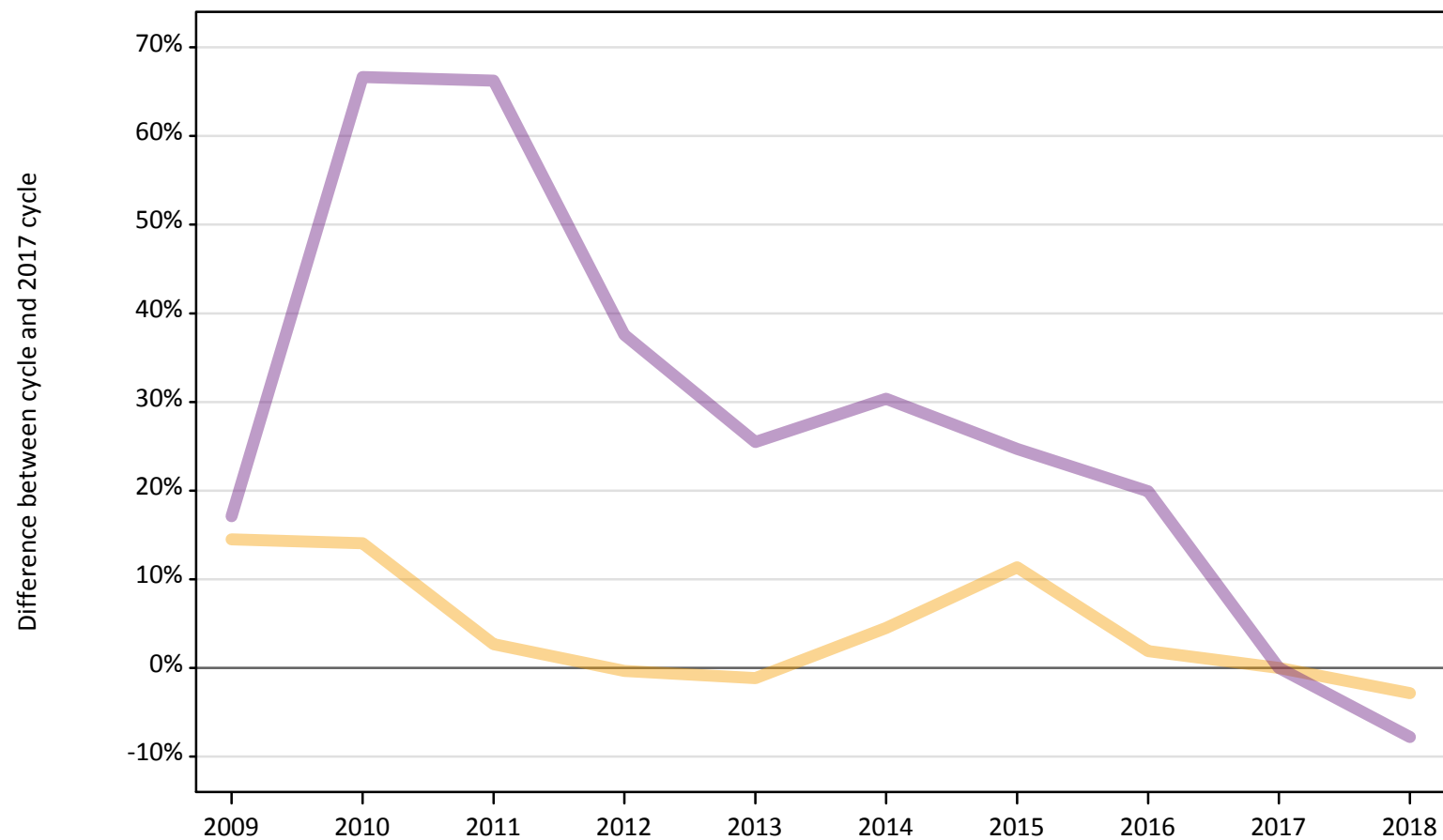
Applicant type	Status	2009	2010	2011	2012	2013	2014	2015	2016	2017	2018
Main scheme	Placed (Adjustment)	-69%	-68%	-52%	8%	12%	4%	5%	-19%	0%	-16%

Note: The percentage change is not recorded in the above table for groups with fewer than 10 placed applicants in that cycle or in the 2017 cycle.

A.12 Main scheme applicants not currently placed from the UK: 5 days after A level results day

Applicants in unplaced states: difference between cycle and 2017 cycle

— Holding offer
— Free to be placed in Clearing



Note: The percentage change is not plotted in the above chart for groups with fewer than 30 unplaced applicants in any one cycle.

A.13 Main scheme applicants not currently placed from the UK: 5 days after A level results day

Applicants in unplaced states: applicants at 5 days after A level results day

Applicant type	Status	2009	2010	2011	2012	2013	2014	2015	2016	2017	2018
Main scheme	Holding offer	43,660	43,490	39,150	38,010	37,690	39,850	42,450	38,850	38,130	37,050
	Free to be placed in Clearing	98,270	139,850	139,510	115,440	105,300	109,400	104,640	100,630	83,920	77,380

A.14 Main scheme applicants not currently placed from the UK: 5 days after A level results day

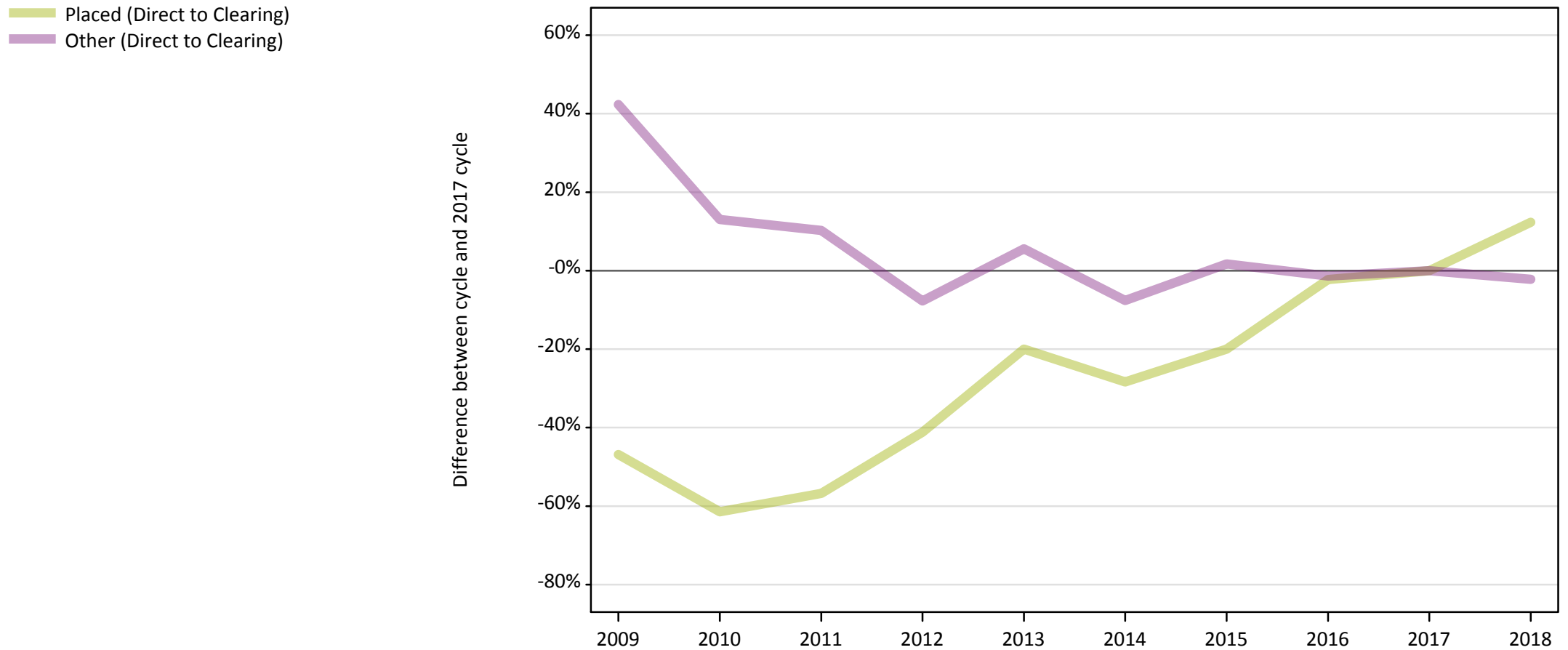
Applicants in unplaced states: difference between cycle and 2017 cycle

Applicant type	Status	2009	2010	2011	2012	2013	2014	2015	2016	2017	2018
Main scheme	Holding offer	15%	14%	3%	-0%	-1%	5%	11%	2%	0%	-3%
	Free to be placed in Clearing	17%	67%	66%	38%	25%	30%	25%	20%	0%	-8%

Note: The percentage change is not recorded in the above table for groups with fewer than 10 unplaced applicants in that cycle or in the 2017 cycle.

A.15 Direct to Clearing applicants from the UK: 5 days after A level results day

Direct to Clearing: difference between cycle and 2017 cycle



Note: The percentage change is not plotted in the above chart for groups with fewer than 30 placed applicants in any one cycle.

A.16 Direct to Clearing applicants from the UK: 5 days after A level results day

Direct to Clearing 5 days after A level results day

Applicant type	Status	2009	2010	2011	2012	2013	2014	2015	2016	2017	2018
Direct to Clearing	Placed (Direct to Clearing)	3,020	2,190	2,460	3,340	4,540	4,070	4,540	5,550	5,680	6,380
	Other (Direct to Clearing)	10,170	8,080	7,880	6,600	7,540	6,600	7,270	7,050	7,140	6,990

A.17 Direct to Clearing applicants from the UK: 5 days after A level results day

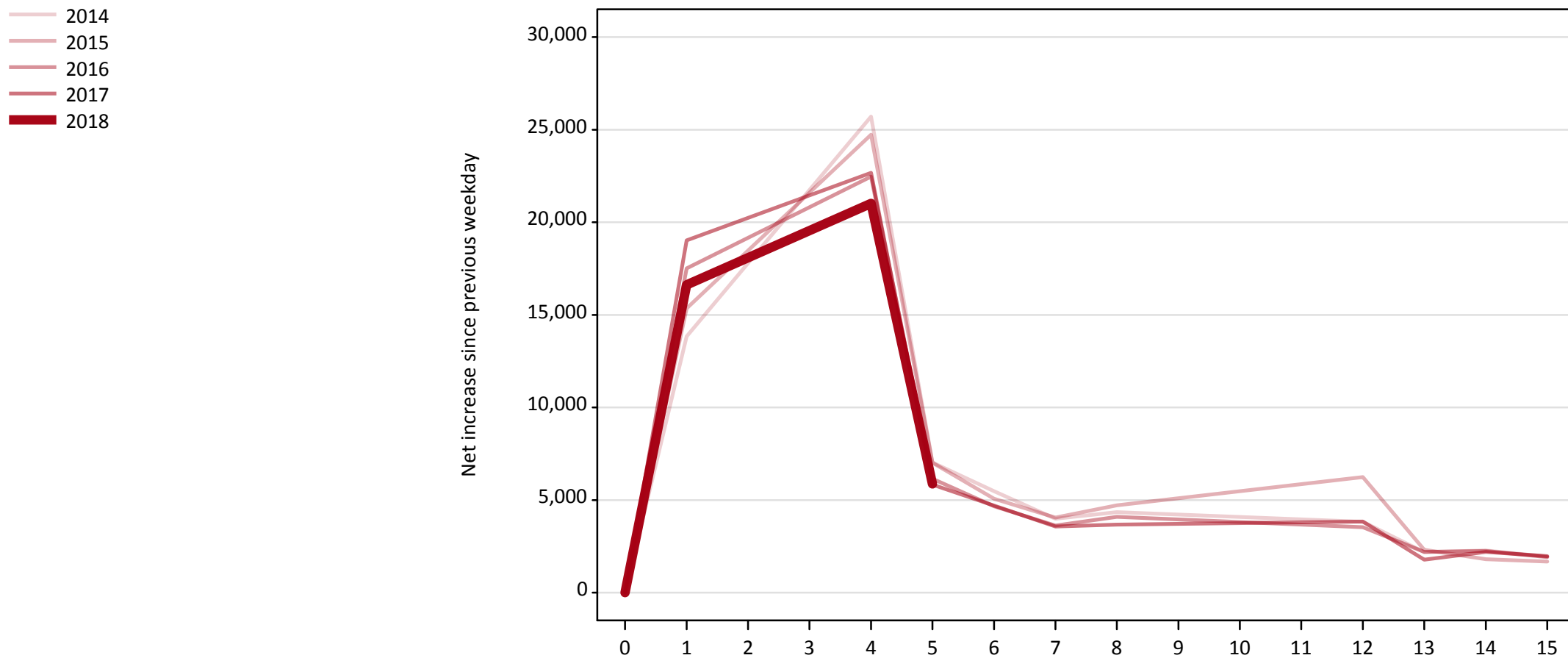
Direct to Clearing: difference between cycle and 2017 cycle

Applicant type	Status	2009	2010	2011	2012	2013	2014	2015	2016	2017	2018
Direct to Clearing	Placed (Direct to Clearing)	-47%	-61%	-57%	-41%	-20%	-28%	-20%	-2%	0%	12%
	Other (Direct to Clearing)	42%	13%	10%	-8%	6%	-8%	2%	-1%	0%	-2%

Note: The percentage change is not recorded in the above table for groups with fewer than 10 placed applicants in that cycle or in the 2017 cycle.

A.18 All Placed: Daily net change (from the UK)

Net increase since previous weekday (2018 cycle up to 5 days after A level results day)

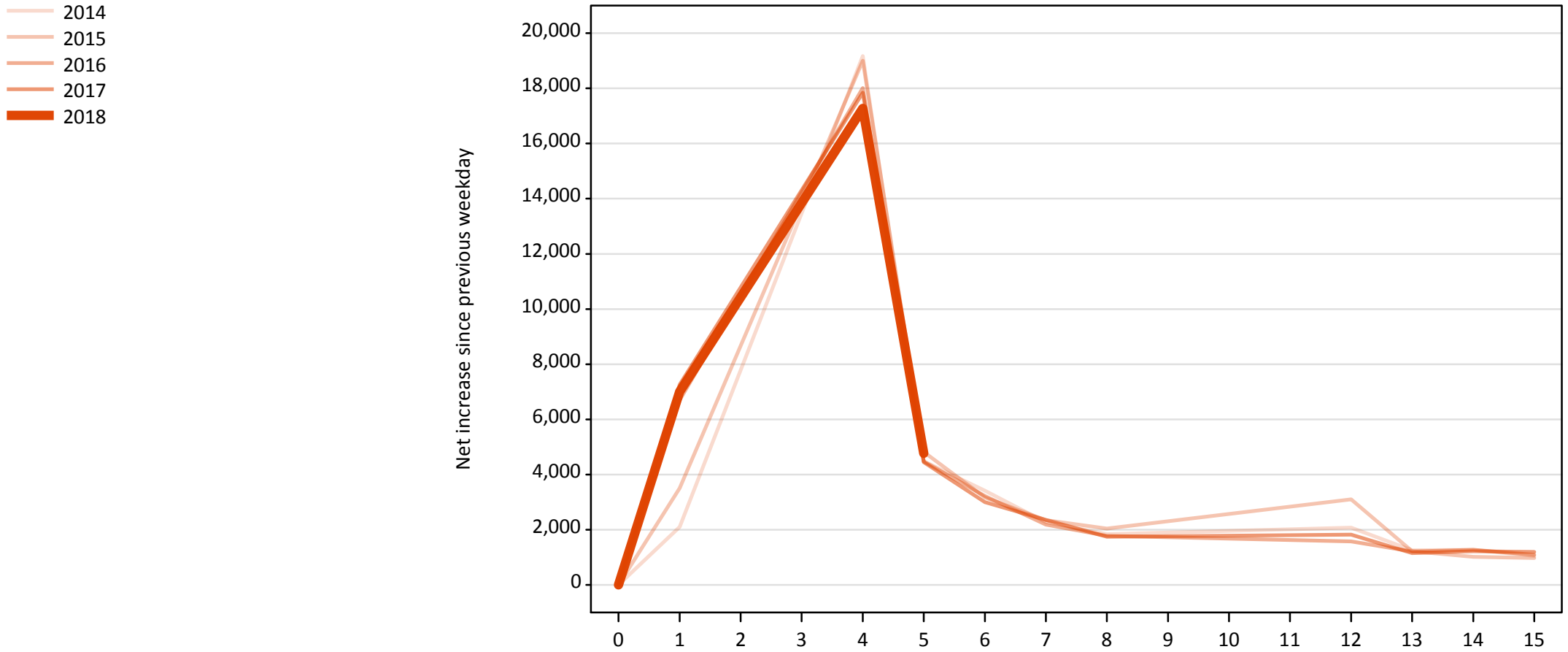


A.19 All Placed: Daily net change (from the UK)

Net increase since previous weekday (2018 cycle up to 5 days after A level results day)

Applicant status, days since A level results day	2014	2015	2016	2017	2018	
All Placed	0	0	0	0	0	
	1	13,840	15,350	17,510	19,030	16,620
	4	25,710	24,730	22,470	22,670	21,010
	5	7,020	7,020	6,140	5,840	5,870
	6	5,480	5,070	4,660	4,710	
	7	3,990	4,060	3,630	3,570	
	8	4,350	4,720	4,090	3,670	
	12	3,830	6,240	3,530	3,840	
	13	2,190	2,310	2,200	1,780	
	14	2,280	1,810	2,260	2,200	
	15	1,950	1,680	1,920	1,970	

A.20 Placed through Clearing only: Daily net change (from the UK)
Net increase since previous weekday (2018 cycle up to 5 days after A level results day)

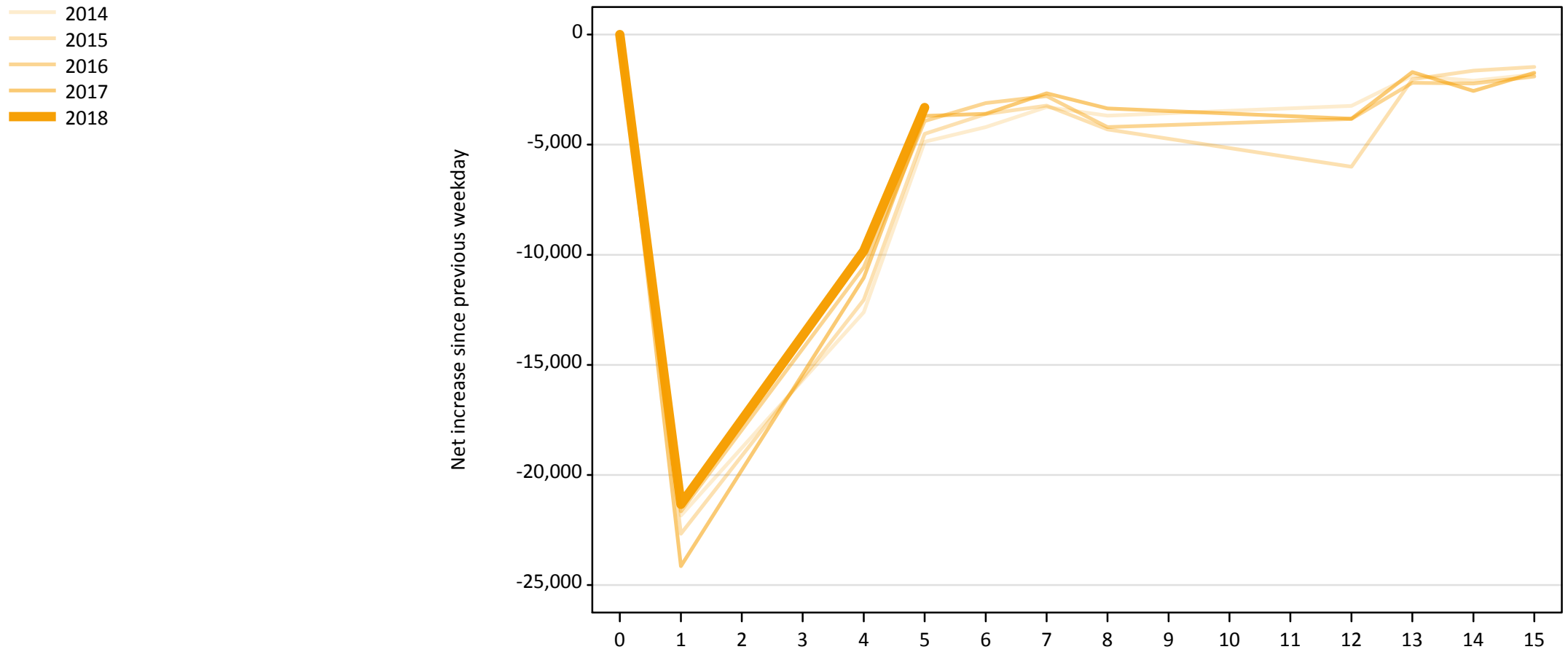


A.21 Placed through Clearing only: Daily net change (from the UK)

Net increase since previous weekday (2018 cycle up to 5 days after A level results day)

Applicant status, days since A level results day		2014	2015	2016	2017	2018
Placed through Clearing only	0	0	0	0	0	0
	1	2,100	3,510	6,700	7,260	7,010
	4	19,170	19,000	18,010	17,840	17,270
	5	4,480	4,820	4,470	4,450	4,770
	6	3,420	3,170	3,220	3,000	
	7	2,270	2,350	2,180	2,360	
	8	1,840	2,040	1,780	1,740	
	12	2,070	3,100	1,570	1,820	
	13	1,250	1,220	1,210	1,150	
	14	1,270	1,020	1,270	1,220	
	15	1,050	980	1,090	1,200	

A.22 Holding Offer: Daily net change (from the UK)
Net increase since previous weekday (2018 cycle up to 5 days after A level results day)

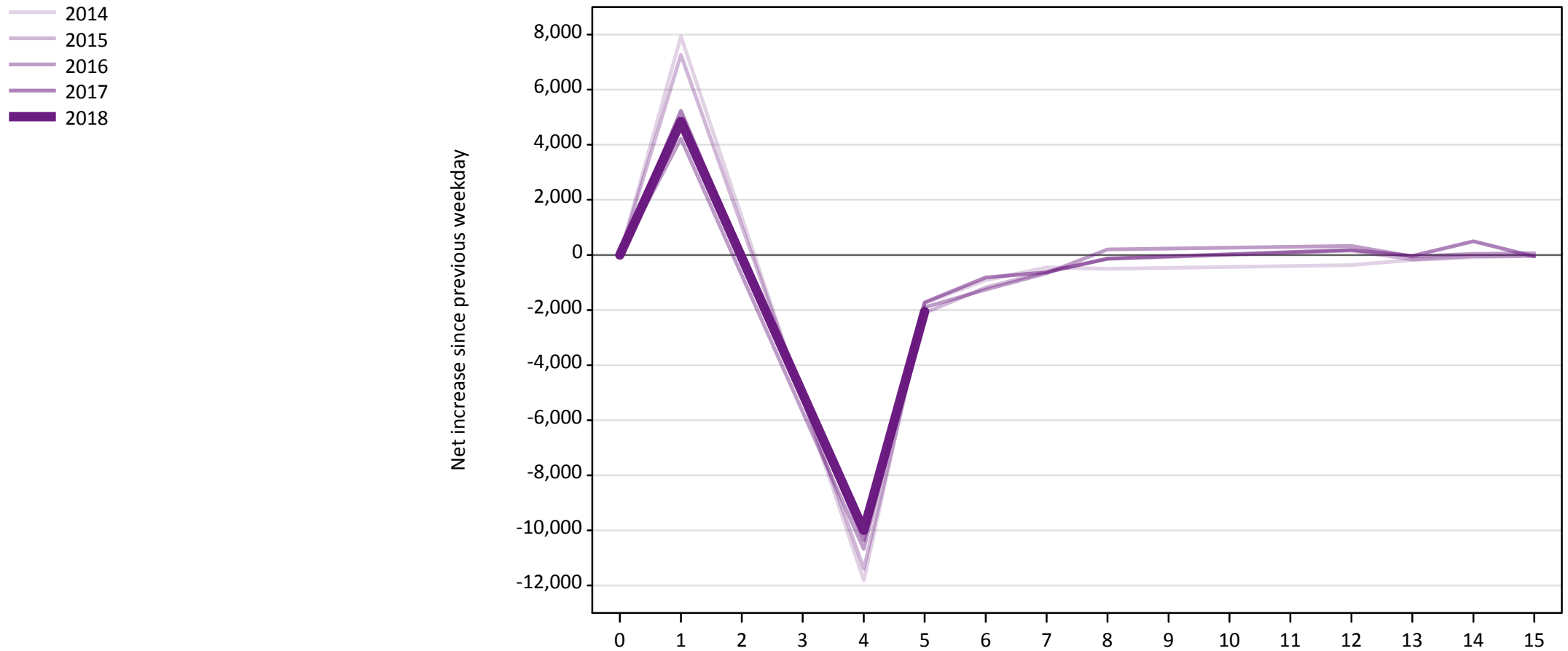


A.23 Holding Offer: Daily net change (from the UK)

Net increase since previous weekday (2018 cycle up to 5 days after A level results day)

Applicant status, days since A level results day	2014	2015	2016	2017	2018	
Holding Offer	0	0	0	0	0	
	1	-21,840	-22,670	-21,650	-24,140	-21,330
	4	-12,610	-12,050	-10,570	-11,040	-9,830
	5	-4,870	-4,510	-3,920	-3,690	-3,320
	6	-4,210	-3,610	-3,110	-3,600	
	7	-3,290	-3,230	-2,790	-2,670	
	8	-3,690	-4,310	-4,200	-3,360	
	12	-3,240	-6,000	-3,830	-3,830	
	13	-1,870	-2,030	-2,190	-1,700	
	14	-2,100	-1,640	-2,220	-2,560	
	15	-1,810	-1,470	-1,900	-1,740	

A.24 Free to be placed in Clearing: Daily net change (from the UK)
Net increase since previous weekday (2018 cycle up to 5 days after A level results day)



A.25 Free to be placed in Clearing: Daily net change (from the UK)

Net increase since previous weekday (2018 cycle up to 5 days after A level results day)

Applicant status, days since A level results day		2014	2015	2016	2017	2018
Free to be placed in Clearing	0	0	0	0	0	0
	1	7,940	7,260	4,220	5,230	4,850
	4	-11,810	-11,400	-10,680	-10,370	-10,000
	5	-1,750	-2,100	-1,900	-1,730	-2,050
	6	-920	-1,180	-1,260	-820	
	7	-450	-610	-660	-630	
	8	-510	-150	200	-130	
	12	-370	150	320	190	
	13	-180	-170	-50	-40	
	14	-90	-50	40	500	
	15	-30	-40	60	-50	