

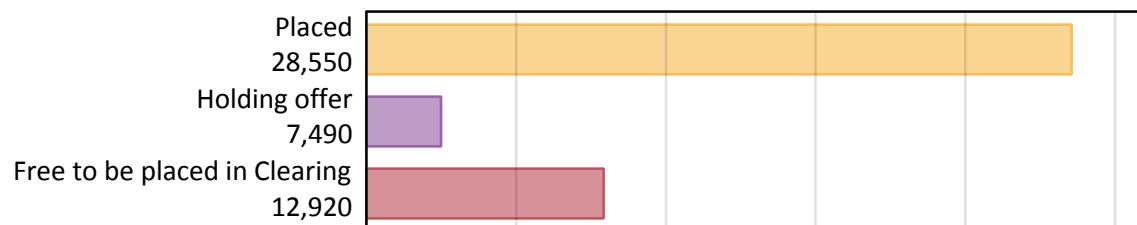
Daily Clearing Analysis: Overview

Analysis at 00:05 on Wednesday 22 August 2018 (6 days after A level results day)

A.1 Applicants by type and status from the EU - excluding UK, 2018 cycle

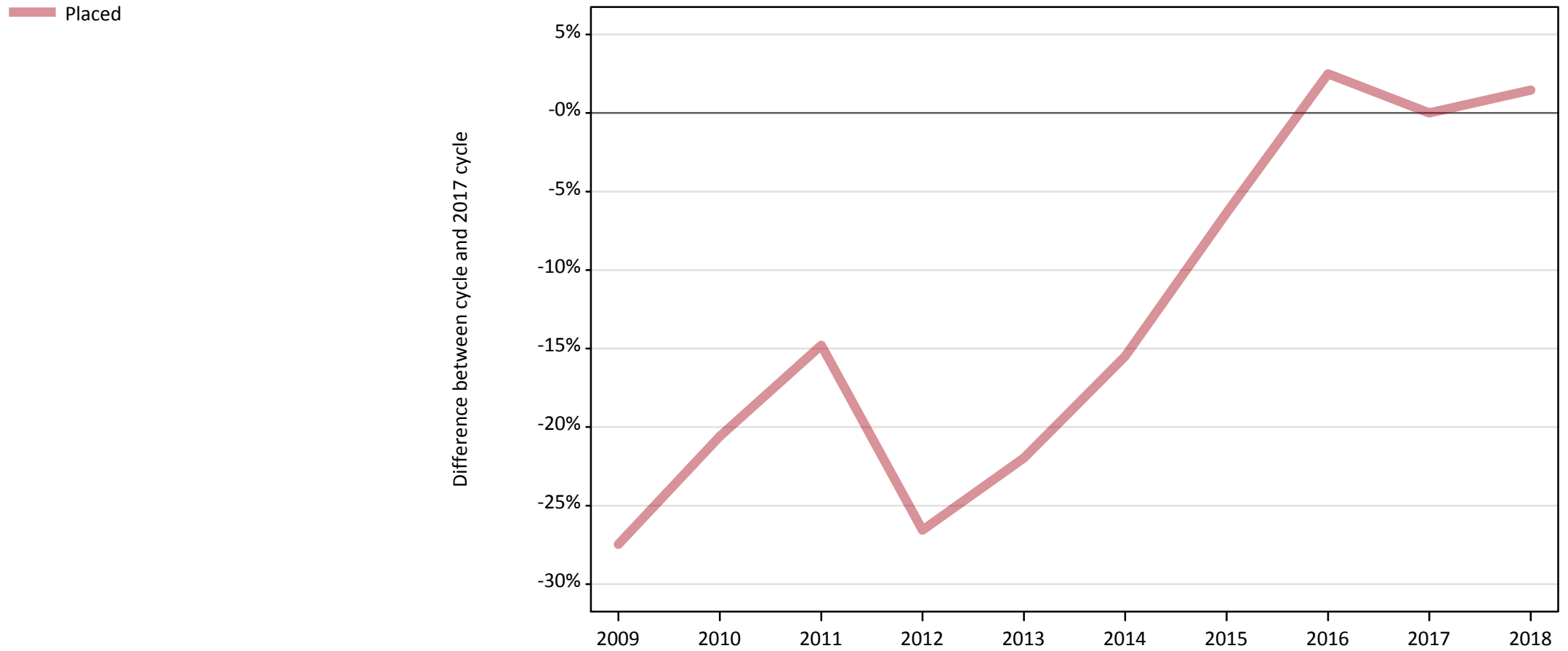
Applicant type	Status	2018
Main scheme	Placed (Clearing)	1,110
	Placed (Adjustment)	30
	Placed (Firm)	23,950
	Placed (Insurance)	2,000
	Placed (Other)	1,170
	Holding offer	7,490
	Free to be placed in Clearing	12,920
Direct to Clearing	Placed (Direct to Clearing)	300
	Other (Direct to Clearing)	390
All applicants	Placed	28,550

A.2 Summary of applicants who are placed, holding offers or free to be placed in Clearing (the EU - excluding UK)



A.3 All placed applicants from the EU - excluding UK: 6 days after A level results day

All placed applicants: difference between cycle and 2017 cycle



Note: The percentage change is not plotted in the above chart for groups with fewer than 30 placed applicants in any one cycle.

A.4 All placed applicants from the EU - excluding UK: 6 days after A level results day

All placed applicants: applicants at 6 days after A level results day

Applicant type	Status	2009	2010	2011	2012	2013	2014	2015	2016	2017	2018
All applicants	Placed	20,410	22,350	23,980	20,670	21,960	23,790	26,360	28,850	28,140	28,550

A.5 All placed applicants from the EU - excluding UK: 6 days after A level results day

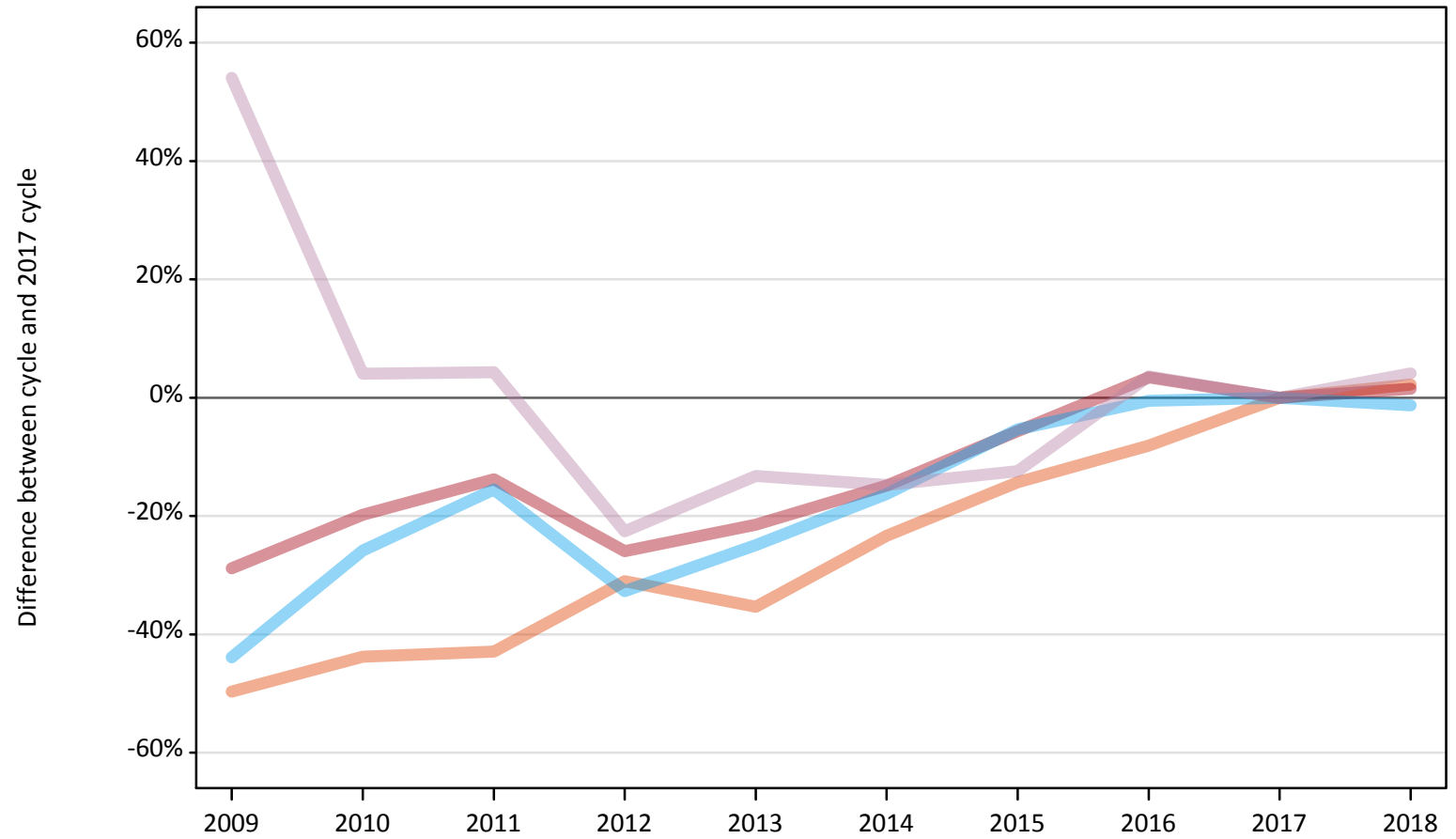
All placed applicants: difference between cycle and 2017 cycle

Applicant type	Status	2009	2010	2011	2012	2013	2014	2015	2016	2017	2018
All applicants	Placed	-27%	-21%	-15%	-27%	-22%	-15%	-6%	2%	0%	1%

Note: The percentage change is not recorded in the above table for groups with fewer than 10 placed applicants in that cycle or in the 2017 cycle.

A.6 Placed main scheme applicants from the EU - excluding UK: 6 days after A level results day
All Main scheme placed routes (excluding Adjustment): difference between cycle and 2017 cycle

- Placed (Clearing)
- Placed (Firm)
- Placed (Insurance)
- Placed (Other)



Note: The percentage change is not plotted in the above chart for groups with fewer than 30 placed applicants in any one cycle.

A.7 Placed main scheme applicants from the EU - excluding UK: 6 days after A level results day

All Main scheme placed routes (excluding Adjustment): applicants at 6 days after A level results day

Applicant type	Status	2009	2010	2011	2012	2013	2014	2015	2016	2017	2018
Main scheme	Placed (Clearing)	550	610	620	750	700	830	930	1,000	1,080	1,110
	Placed (Firm)	16,790	18,920	20,340	17,470	18,520	20,080	22,260	24,400	23,590	23,950
	Placed (Insurance)	1,140	1,500	1,710	1,360	1,520	1,700	1,920	2,010	2,030	2,000
	Placed (Other)	1,720	1,160	1,170	870	970	950	980	1,160	1,120	1,170

A.8 Placed main scheme applicants from the EU - excluding UK: 6 days after A level results day

All Main scheme placed routes (excluding Adjustment): difference between cycle and 2017 cycle

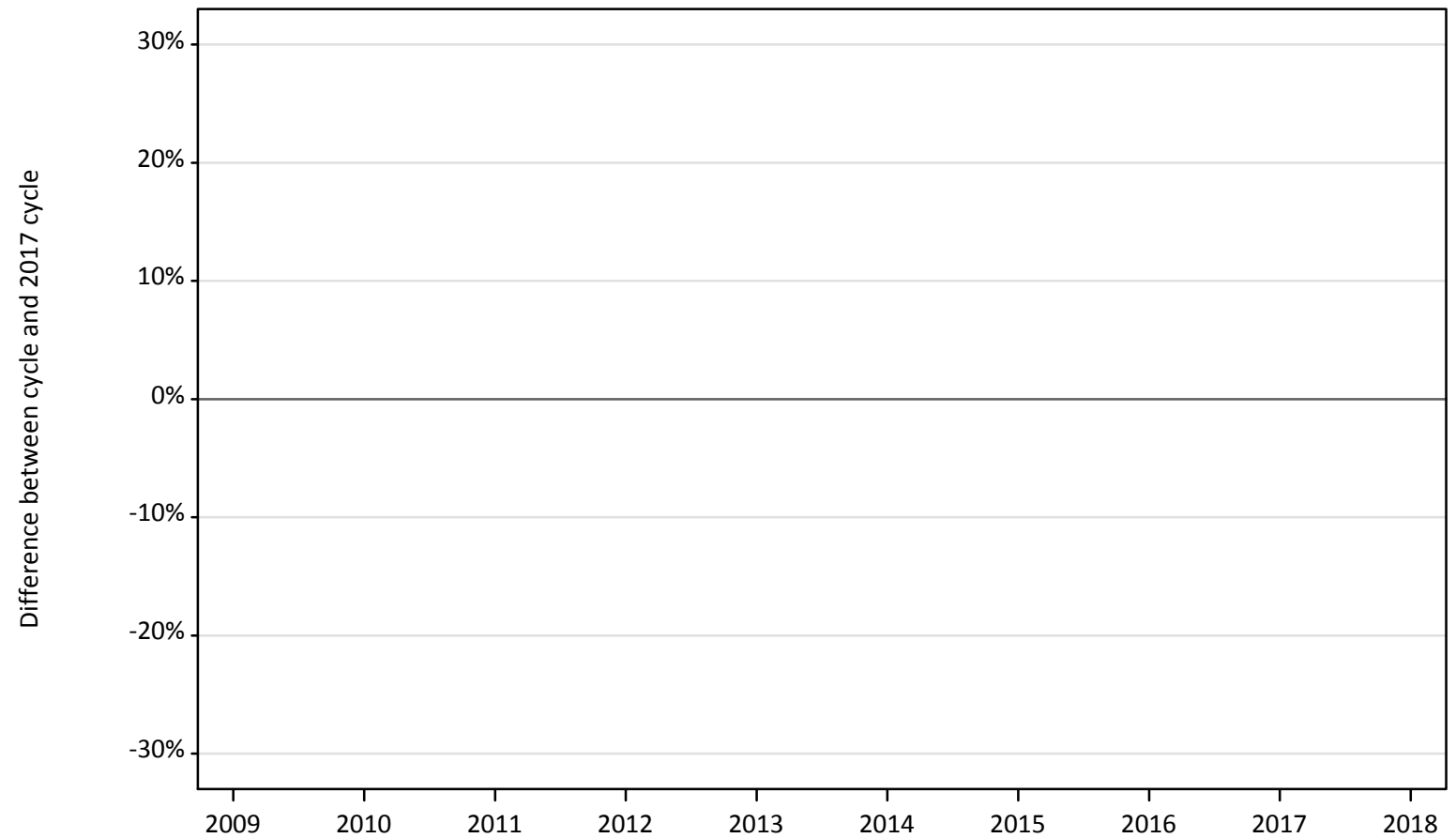
Applicant type	Status	2009	2010	2011	2012	2013	2014	2015	2016	2017	2018
Main scheme	Placed (Clearing)	-50%	-44%	-43%	-31%	-35%	-23%	-14%	-8%	0%	2%
	Placed (Firm)	-29%	-20%	-14%	-26%	-21%	-15%	-6%	3%	0%	2%
	Placed (Insurance)	-44%	-26%	-16%	-33%	-25%	-16%	-5%	-1%	0%	-1%
	Placed (Other)	54%	4%	4%	-23%	-13%	-15%	-12%	4%	0%	4%

Note: The percentage change is not recorded in the above table for groups with fewer than 10 placed applicants in that cycle or in the 2017 cycle.

A.9 Main scheme applicants placed through adjustment: 6 days after A level results day

Placed through adjustment: difference between cycle and 2017 cycle

Placed (Adjustment)



Note: The percentage change is not plotted in the above chart for groups with fewer than 30 placed applicants in any one cycle.

A.10 Main scheme applicants placed through adjustment: 6 days after A level results day

Placed through adjustment: applicants at 6 days after A level results day

Applicant type	Status	2009	2010	2011	2012	2013	2014	2015	2016	2017	2018
Main scheme	Placed (Adjustment)	10	10	10	40	40	40	40	40	40	30

A.11 Main scheme applicants placed through adjustment: 6 days after A level results day

Placed through adjustment: difference between cycle and 2017 cycle

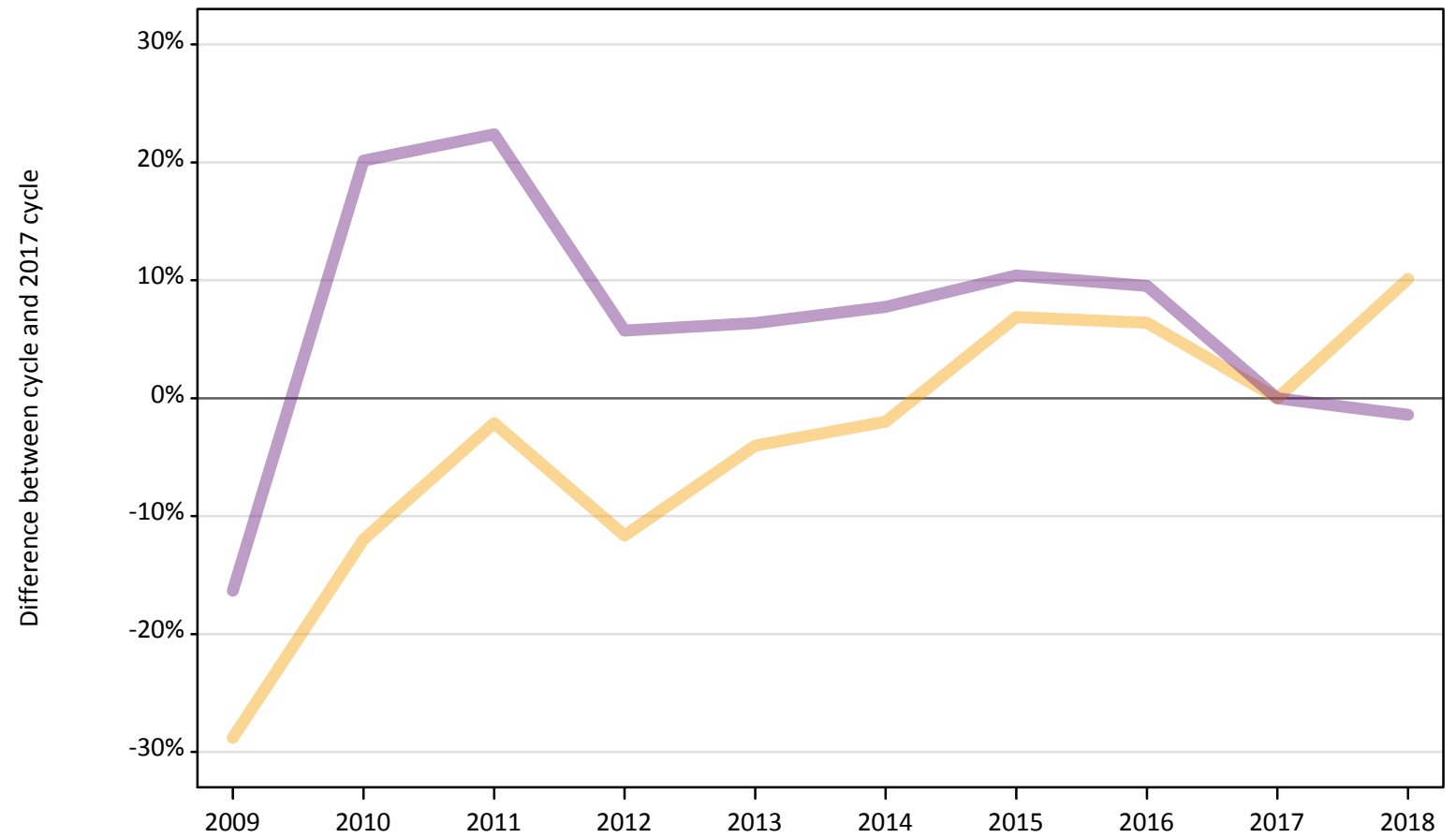
Applicant type	Status	2009	2010	2011	2012	2013	2014	2015	2016	2017	2018
Main scheme	Placed (Adjustment)	-71%	-69%	-71%	-14%	-17%	-12%	-7%	-10%	0%	-36%

Note: The percentage change is not recorded in the above table for groups with fewer than 10 placed applicants in that cycle or in the 2017 cycle.

A.12 Main scheme applicants not currently placed from the EU - excluding UK: 6 days after A level results day

Applicants in unplaced states: difference between cycle and 2017 cycle

- Holding offer
- Free to be placed in Clearing



Note: The percentage change is not plotted in the above chart for groups with fewer than 30 unplaced applicants in any one cycle.

A.13 Main scheme applicants not currently placed from the EU - excluding UK: 6 days after A level results day

Applicants in unplaced states: applicants at 6 days after A level results day

Applicant type	Status	2009	2010	2011	2012	2013	2014	2015	2016	2017	2018
Main scheme	Holding offer	4,840	5,990	6,660	6,010	6,530	6,660	7,270	7,240	6,800	7,490
	Free to be placed in Clearing	10,960	15,750	16,040	13,860	13,940	14,120	14,470	14,350	13,110	12,920

A.14 Main scheme applicants not currently placed from the EU - excluding UK: 6 days after A level results day

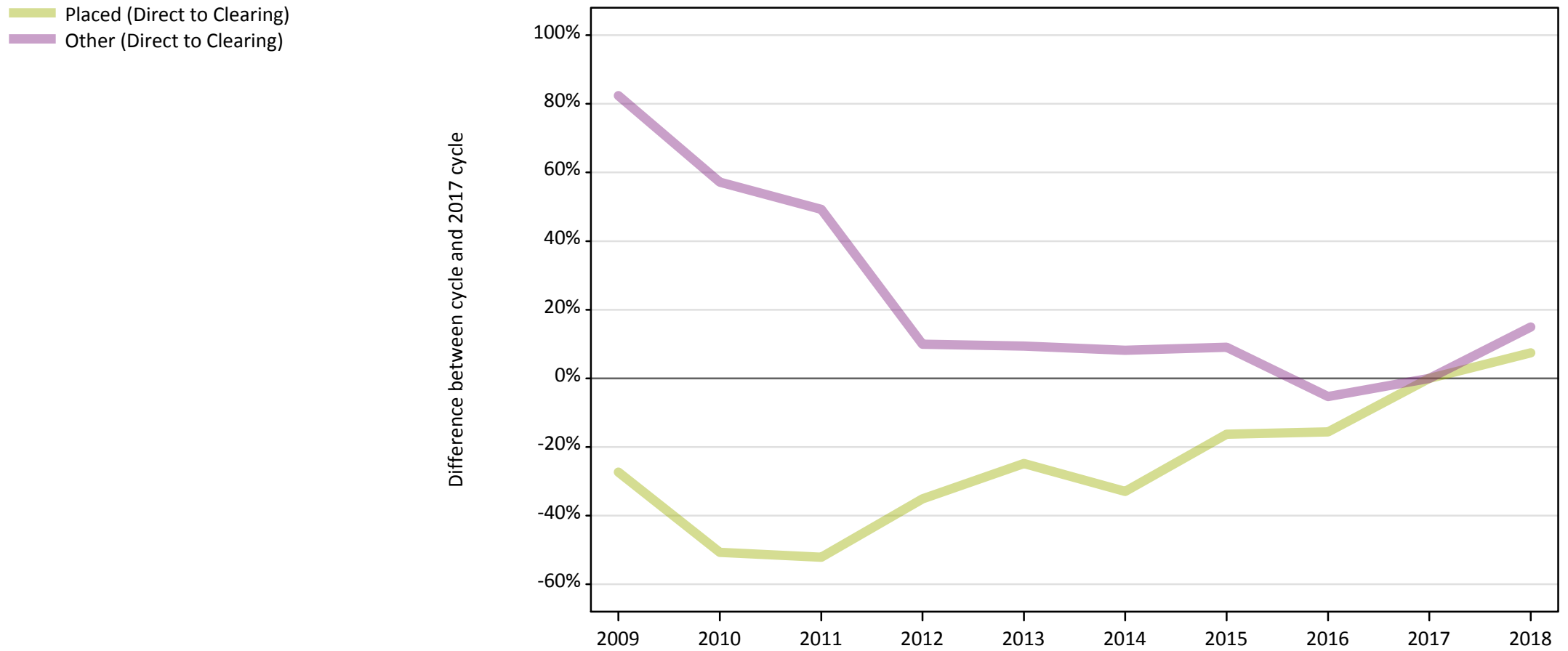
Applicants in unplaced states: difference between cycle and 2017 cycle

Applicant type	Status	2009	2010	2011	2012	2013	2014	2015	2016	2017	2018
Main scheme	Holding offer	-29%	-12%	-2%	-12%	-4%	-2%	7%	6%	0%	10%
	Free to be placed in Clearing	-16%	20%	22%	6%	6%	8%	10%	10%	0%	-1%

Note: The percentage change is not recorded in the above table for groups with fewer than 10 unplaced applicants in that cycle or in the 2017 cycle.

A.15 Direct to Clearing applicants from the EU - excluding UK: 6 days after A level results day

Direct to Clearing: difference between cycle and 2017 cycle



Note: The percentage change is not plotted in the above chart for groups with fewer than 30 placed applicants in any one cycle.

A.16 Direct to Clearing applicants from the EU - excluding UK: 6 days after A level results day

Direct to Clearing 6 days after A level results day

Applicant type	Status	2009	2010	2011	2012	2013	2014	2015	2016	2017	2018
Direct to Clearing	Placed (Direct to Clearing)	210	140	140	180	210	190	240	240	280	300
	Other (Direct to Clearing)	620	540	510	380	370	370	370	320	340	390

A.17 Direct to Clearing applicants from the EU - excluding UK: 6 days after A level results day

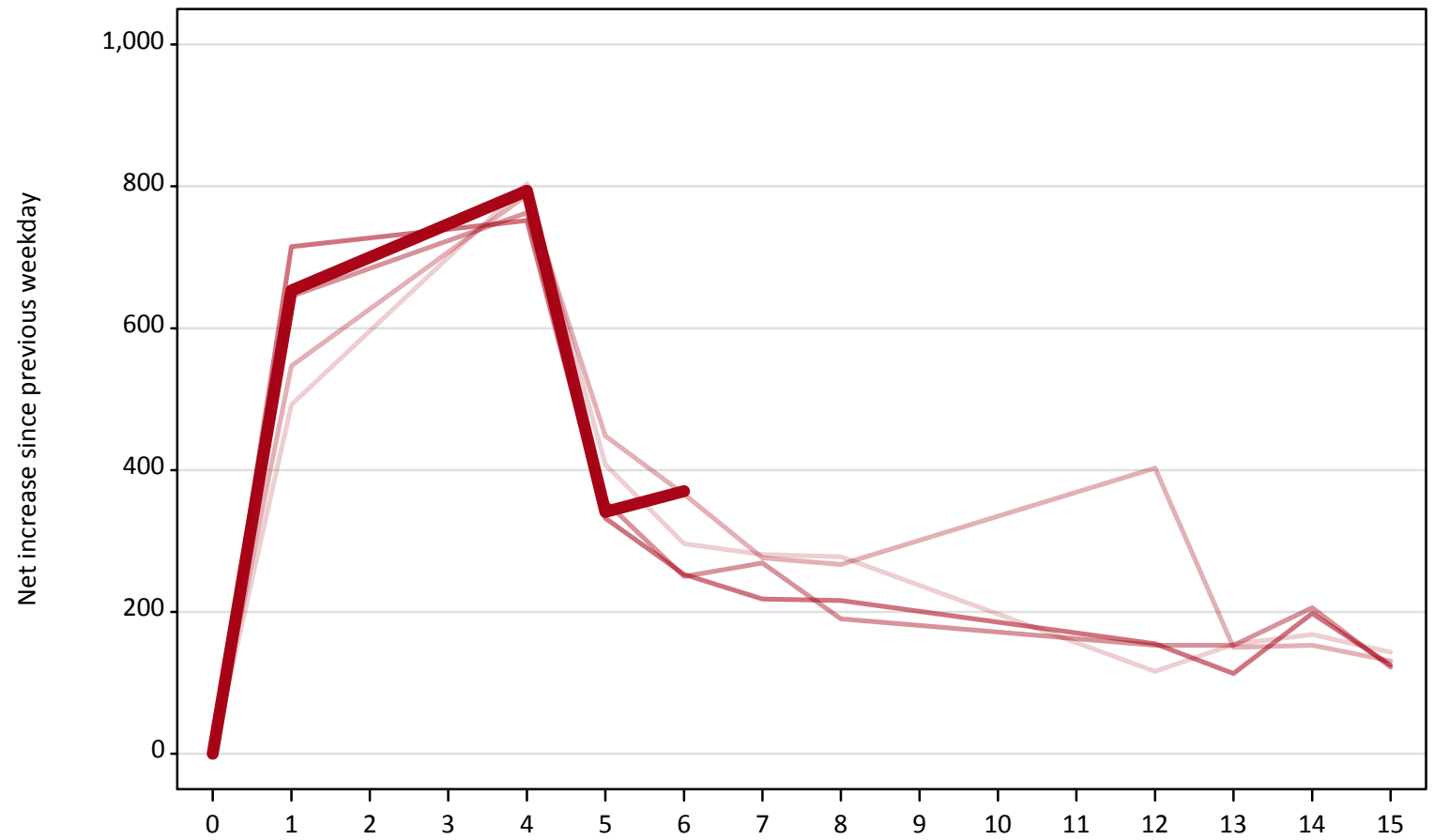
Direct to Clearing: difference between cycle and 2017 cycle

Applicant type	Status	2009	2010	2011	2012	2013	2014	2015	2016	2017	2018
Direct to Clearing	Placed (Direct to Clearing)	-27%	-51%	-52%	-35%	-25%	-33%	-16%	-16%	0%	7%
	Other (Direct to Clearing)	82%	57%	49%	10%	9%	8%	9%	-5%	0%	15%

Note: The percentage change is not recorded in the above table for groups with fewer than 10 placed applicants in that cycle or in the 2017 cycle.

A.18 All Placed: Daily net change (from the EU - excluding UK)
Net increase since previous weekday (2018 cycle up to 6 days after A level results day)

- 2014
- 2015
- 2016
- 2017
- 2018**

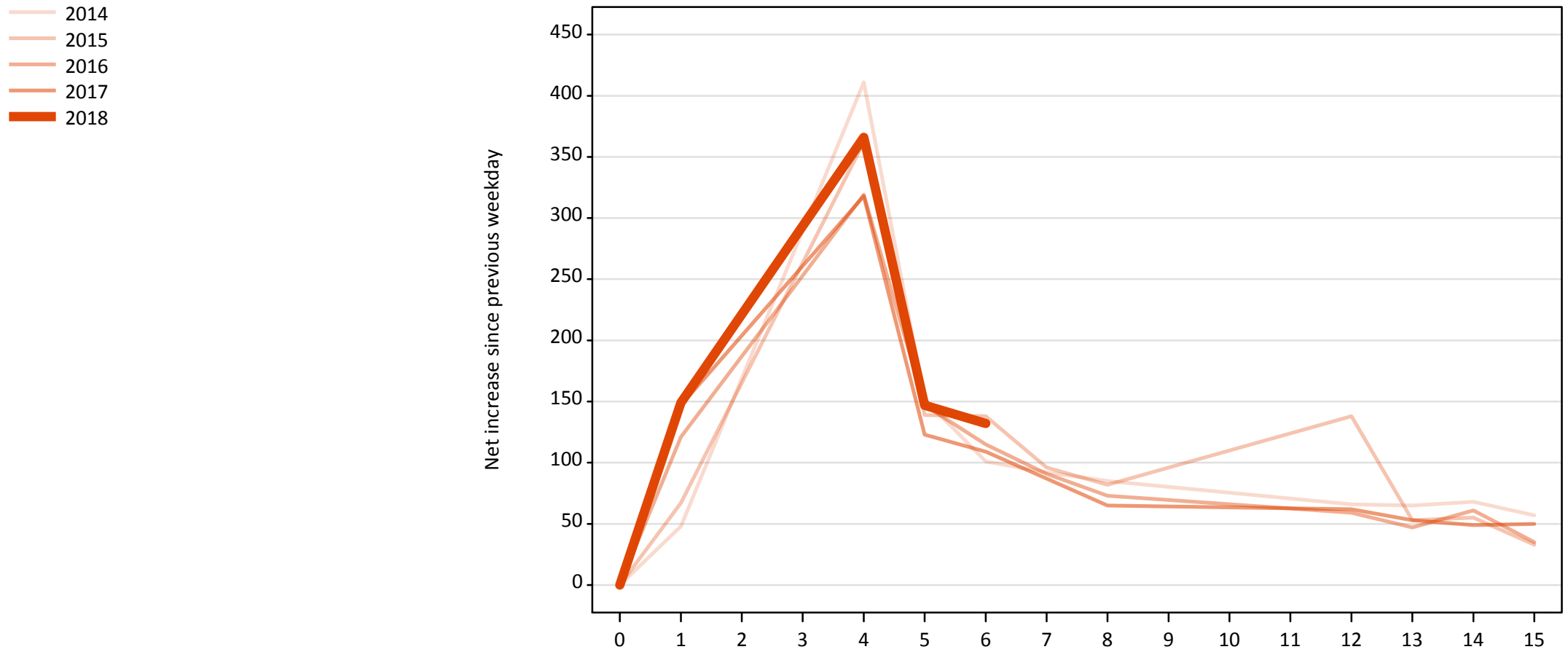


A.19 All Placed: Daily net change (from the EU - excluding UK)

Net increase since previous weekday (2018 cycle up to 6 days after A level results day)

Applicant status, days since A level results day		2014	2015	2016	2017	2018
All Placed	0	0	0	0	0	0
	1	490	550	650	720	650
	4	800	790	760	750	790
	5	410	450	360	330	340
	6	300	370	250	250	370
	7	280	280	270	220	
	8	280	270	190	220	
	12	120	400	150	160	
	13	150	150	150	110	
	14	170	150	210	200	
	15	140	130	120	130	

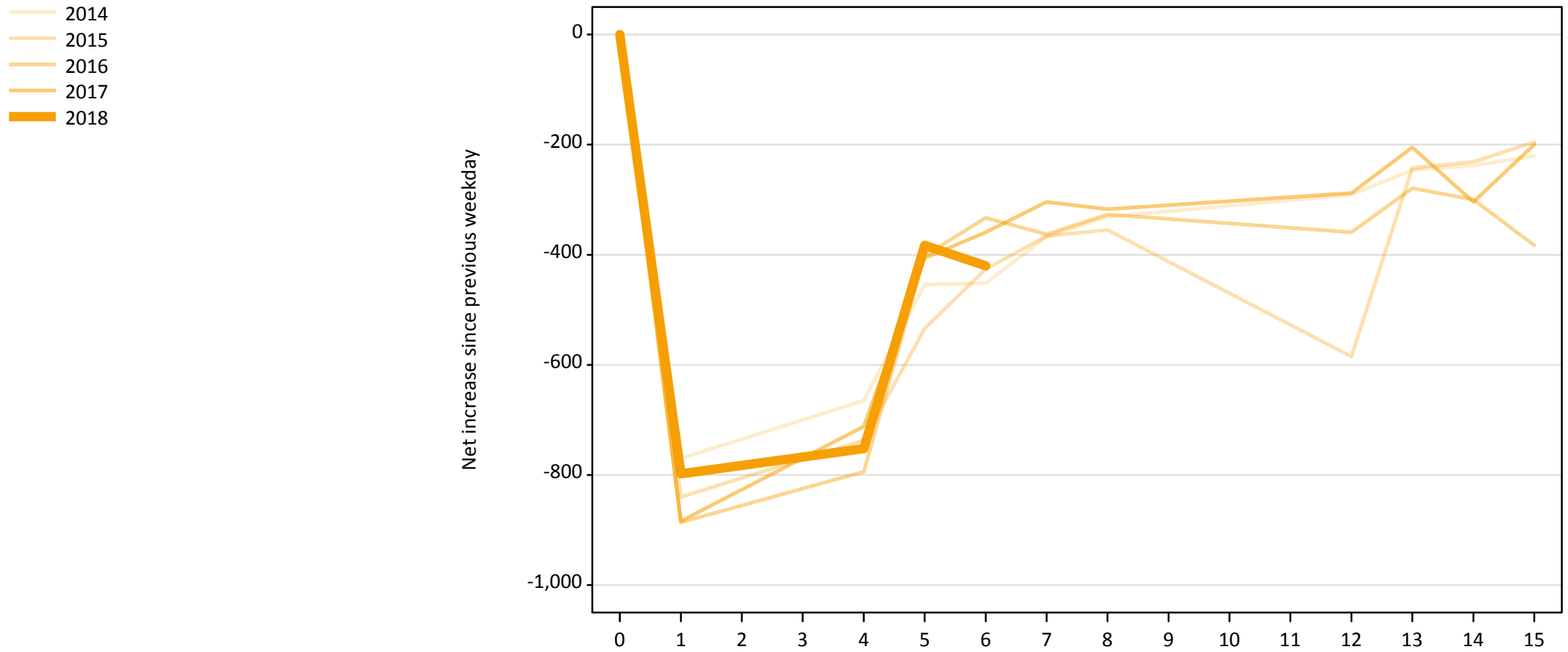
A.20 Placed through Clearing only: Daily net change (from the EU - excluding UK)
Net increase since previous weekday (2018 cycle up to 6 days after A level results day)



A.21 Placed through Clearing only: Daily net change (from the EU - excluding UK)
 Net increase since previous weekday (2018 cycle up to 6 days after A level results day)

Applicant status, days since A level results day		2014	2015	2016	2017	2018
Placed through Clearing only	0	0	0	0	0	0
	1	50	70	120	150	150
	4	410	360	320	320	370
	5	150	140	150	120	150
	6	100	140	120	110	130
	7	90	100	90	90	
	8	90	80	70	70	
	12	70	140	60	60	
	13	70	50	50	50	
	14	70	60	60	50	
	15	60	30	40	50	

A.22 Holding Offer: Daily net change (from the EU - excluding UK)
Net increase since previous weekday (2018 cycle up to 6 days after A level results day)



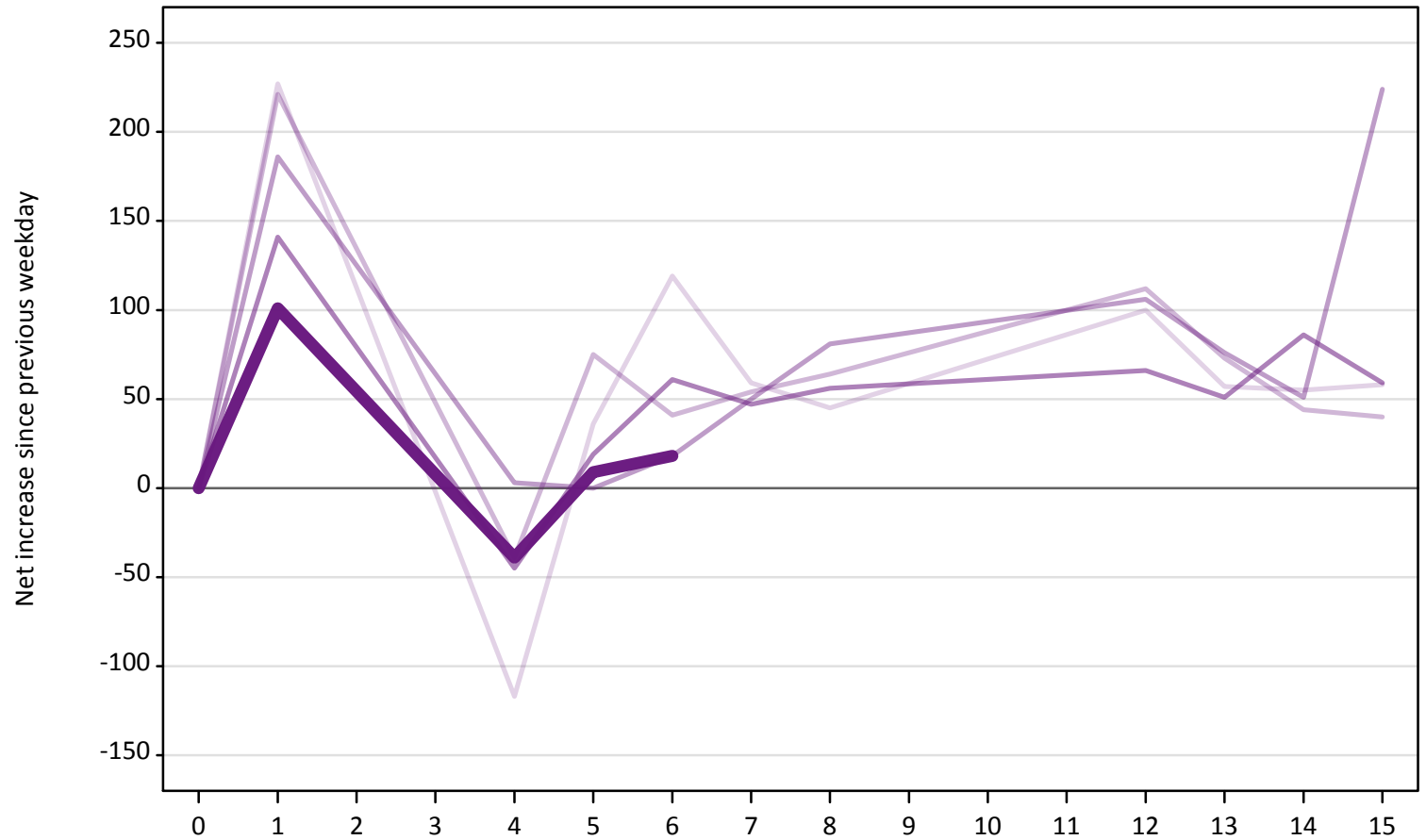
A.23 Holding Offer: Daily net change (from the EU - excluding UK)

Net increase since previous weekday (2018 cycle up to 6 days after A level results day)

Applicant status, days since A level results day	2014	2015	2016	2017	2018	
Holding Offer	0	0	0	0	0	
	1	-770	-840	-890	-880	-800
	4	-670	-740	-790	-710	-750
	5	-450	-530	-400	-410	-380
	6	-450	-430	-330	-360	-420
	7	-370	-370	-360	-300	
	8	-330	-360	-330	-320	
	12	-290	-590	-360	-290	
	13	-250	-240	-280	-210	
	14	-240	-230	-300	-300	
	15	-220	-200	-380	-200	

A.24 Free to be placed in Clearing: Daily net change (from the EU - excluding UK)
Net increase since previous weekday (2018 cycle up to 6 days after A level results day)

- 2014
- 2015
- 2016
- 2017
- 2018**



A.25 Free to be placed in Clearing: Daily net change (from the EU - excluding UK)
 Net increase since previous weekday (2018 cycle up to 6 days after A level results day)

Applicant status, days since A level results day		2014	2015	2016	2017	2018
Free to be placed in Clearing	0	0	0	0	0	0
	1	230	220	190	140	100
	4	-120	-40	0	-50	-40
	5	40	80	0	20	10
	6	120	40	20	60	20
	7	60	50	50	50	
	8	50	60	80	60	
	12	100	110	110	70	
	13	60	70	80	50	
	14	60	40	50	90	
	15	60	40	220	60	