

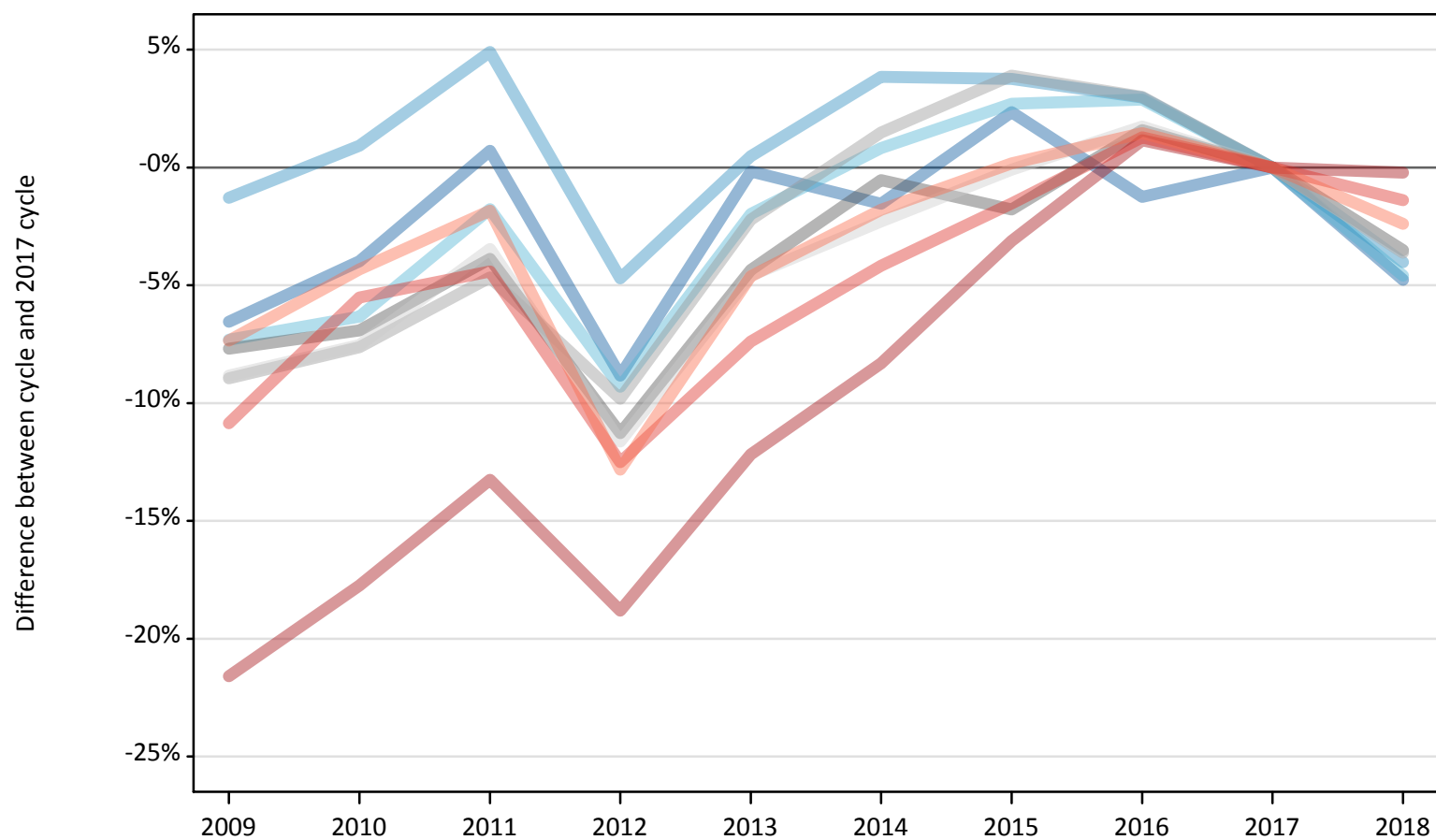
Daily Clearing Analysis: Region

Analysis at 00:05 on Wednesday 22 August 2018 (6 days after A level results day)

R.1 Placed applicants by region of domicile: 6 days after A level results day

Placed applicants: change relative to 2017 cycle totals

- North East
- North West
- Yorkshire and The Humber
- East Midlands
- West Midlands
- East of England
- London
- South East
- South West



Note: The percentage change is not plotted in the above chart for groups with fewer than 30 placed applicants in any one cycle.

R.2 Placed applicants by region of domicile: 6 days after A level results day

Applicant Status	Domicile	2009	2010	2011	2012	2013	2014	2015	2016	2017	2018
Placed	North East	13,920	14,310	15,000	13,580	14,870	14,670	15,250	14,710	14,900	14,190
	North West	43,890	44,870	46,640	42,370	44,680	46,170	46,130	45,790	44,460	42,680
	Yorkshire and The Humber	29,070	29,370	30,810	28,440	30,740	31,620	32,210	32,270	31,360	29,920
	East Midlands	24,980	25,190	26,010	24,010	25,880	26,910	26,580	27,490	27,060	26,110
	West Midlands	32,770	33,240	34,310	32,450	35,190	36,520	37,390	37,060	35,990	34,680
	East of England	33,040	33,510	34,990	32,030	34,580	35,420	36,210	36,880	36,250	34,940
	London	52,750	55,340	58,360	54,620	59,090	61,690	65,180	68,060	67,280	67,130
	South East	51,280	54,350	54,990	50,330	53,280	55,120	56,640	58,260	57,520	56,730
	South West	29,790	30,770	31,570	28,030	30,670	31,580	32,210	32,630	32,160	31,390
	(England total)	311,490	320,950	332,670	305,870	328,990	339,690	347,800	353,130	346,970	337,760
	Scotland	26,030	27,690	27,410	27,250	27,800	28,660	31,600	32,920	33,500	33,990
	Northern Ireland	12,070	12,560	12,810	11,860	13,210	13,200	12,950	13,730	13,350	12,690
	Wales	17,440	16,630	16,490	17,200	17,400	18,150	18,490	18,720	18,290	17,830
	UK	367,030	377,830	389,390	362,170	387,400	399,700	410,840	418,500	412,110	402,280

R.3 Placed applicants by region of domicile: 6 days after A level results day

Placed applicants: change relative to 2017 cycle totals

Applicant Status	Domicile	2009	2010	2011	2012	2013	2014	2015	2016	2017	2018
Placed	North East	-7%	-4%	1%	-9%	-0%	-2%	2%	-1%	0%	-5%
	North West	-1%	1%	5%	-5%	0%	4%	4%	3%	0%	-4%
	Yorkshire and The Humber	-7%	-6%	-2%	-9%	-2%	1%	3%	3%	0%	-5%
	East Midlands	-8%	-7%	-4%	-11%	-4%	-1%	-2%	2%	0%	-4%
	West Midlands	-9%	-8%	-5%	-10%	-2%	1%	4%	3%	0%	-4%
	East of England	-9%	-8%	-3%	-12%	-5%	-2%	-0%	2%	0%	-4%
	London	-22%	-18%	-13%	-19%	-12%	-8%	-3%	1%	0%	-0%
	South East	-11%	-6%	-4%	-13%	-7%	-4%	-2%	1%	0%	-1%
	South West	-7%	-4%	-2%	-13%	-5%	-2%	0%	1%	0%	-2%
	(England total)	-10%	-7%	-4%	-12%	-5%	-2%	0%	2%	0%	-3%
	Scotland	-22%	-17%	-18%	-19%	-17%	-14%	-6%	-2%	0%	1%
	Northern Ireland	-10%	-6%	-4%	-11%	-1%	-1%	-3%	3%	0%	-5%
	Wales	-5%	-9%	-10%	-6%	-5%	-1%	1%	2%	0%	-2%
	UK	-11%	-8%	-6%	-12%	-6%	-3%	-0%	2%	0%	-2%

Note: The percentage change is not recorded in the above table for groups with fewer than 10 placed applicants in that cycle or in the 2017 cycle.

R.4 Placed applicants by region of domicile: 6 days after A level results day

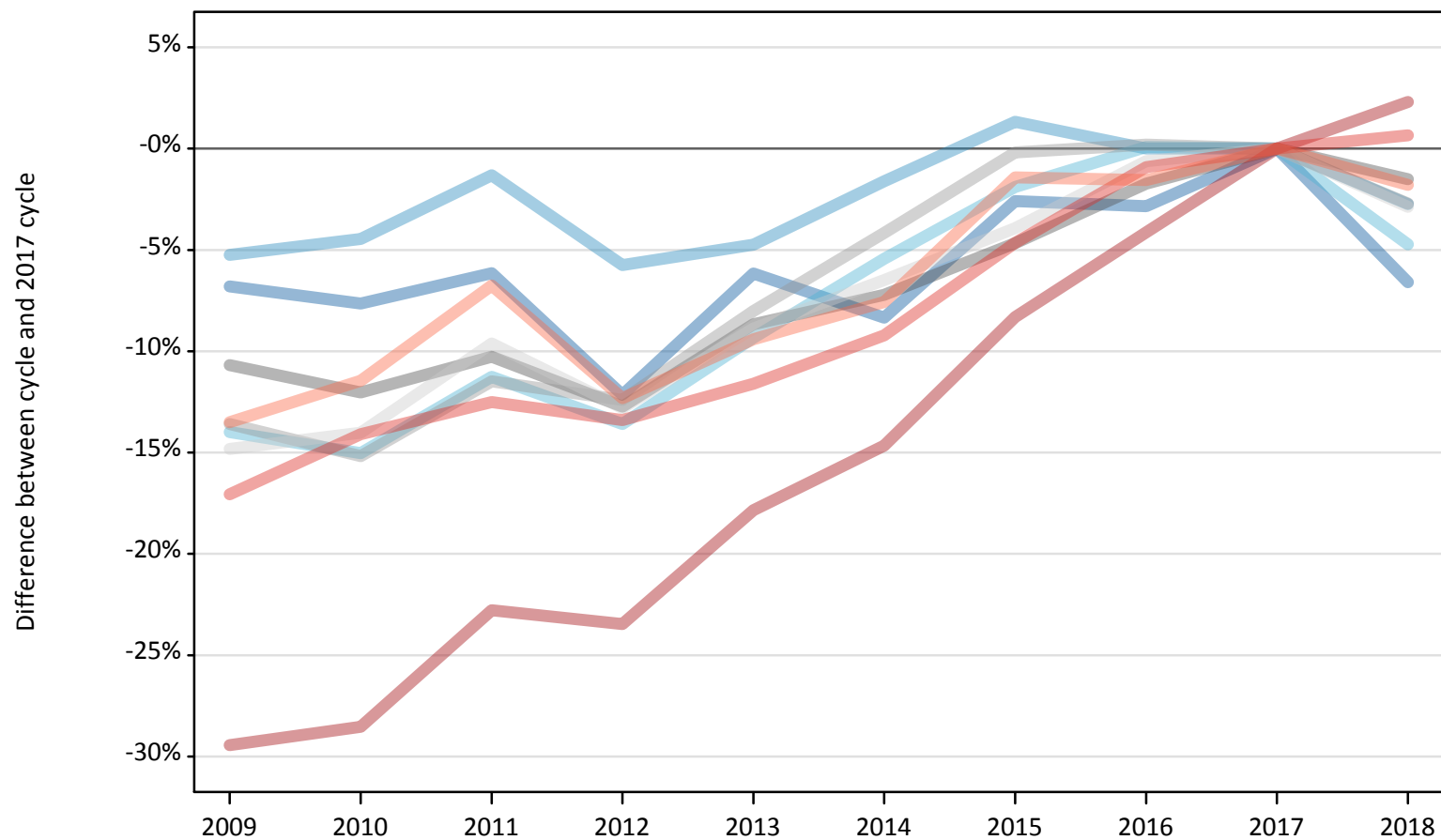
Placed applicants: absolute change relative to 2017 cycle totals

Applicant Status	Domicile	2009	2010	2011	2012	2013	2014	2015	2016	2017	2018
Placed	North East	-980	-590	110	-1,320	-30	-230	350	-190	0	-710
	North West	-570	410	2,180	-2,090	220	1,710	1,670	1,320	0	-1,790
	Yorkshire and The Humber	-2,290	-1,990	-560	-2,920	-620	260	850	910	0	-1,440
	East Midlands	-2,080	-1,870	-1,050	-3,050	-1,180	-150	-480	430	0	-950
	West Midlands	-3,220	-2,740	-1,680	-3,530	-800	530	1,400	1,080	0	-1,300
	East of England	-3,200	-2,730	-1,250	-4,220	-1,660	-830	-40	630	0	-1,300
	London	-14,530	-11,940	-8,920	-12,660	-8,200	-5,600	-2,100	770	0	-150
	South East	-6,240	-3,180	-2,540	-7,190	-4,250	-2,400	-880	730	0	-800
	South West	-2,360	-1,390	-590	-4,130	-1,480	-580	60	470	0	-770
	(England total)	-35,480	-26,020	-14,300	-41,110	-17,990	-7,280	830	6,150	0	-9,210
	Scotland	-7,480	-5,810	-6,090	-6,260	-5,700	-4,840	-1,910	-580	0	490
	Northern Ireland	-1,280	-790	-540	-1,490	-130	-150	-390	390	0	-650
	Wales	-850	-1,660	-1,800	-1,090	-890	-140	200	430	0	-460
	UK	-45,080	-34,280	-22,720	-49,940	-24,710	-12,410	-1,270	6,390	0	-9,830

R.5 Placed 18 year old applicants by region of domicile: 6 days after A level results day

Placed 18 year old applicants: change relative to 2017 cycle totals

- North East
- North West
- Yorkshire and The Humber
- East Midlands
- West Midlands
- East of England
- London
- South East
- South West



Note: The percentage change is not plotted in the above chart for groups with fewer than 30 placed applicants in any one cycle.

R.6 Placed 18 year old applicants by region of domicile: 6 days after A level results day

Applicant Status	Domicile	2009	2010	2011	2012	2013	2014	2015	2016	2017	2018
Placed	North East	7,880	7,810	7,940	7,430	7,930	7,750	8,240	8,220	8,460	7,900
	North West	24,800	25,010	25,830	24,670	24,930	25,750	26,520	26,170	26,170	25,460
	Yorkshire and The Humber	16,140	15,940	16,650	16,220	17,010	17,750	18,410	18,780	18,760	17,880
	East Midlands	14,330	14,110	14,390	14,000	14,650	14,880	15,290	15,760	16,040	15,800
	West Midlands	17,980	17,650	18,420	18,230	19,140	19,940	20,770	20,850	20,810	20,240
	East of England	19,270	19,450	20,450	19,730	20,620	21,160	21,740	22,490	22,630	21,980
	London	26,140	26,480	28,610	28,350	30,440	31,620	33,970	35,520	37,050	37,900
	South East	28,960	29,990	30,540	30,230	30,860	31,690	33,280	34,590	34,910	35,140
	South West	15,000	15,360	16,180	15,210	15,720	16,030	17,100	17,080	17,350	17,040
	(England total)	170,500	171,800	179,000	174,060	181,290	186,570	195,310	199,450	202,160	199,330
	Scotland	14,290	14,520	13,870	13,950	14,040	14,260	14,380	14,620	14,590	14,580
	Northern Ireland	8,460	8,270	8,130	7,650	8,250	8,020	7,950	8,140	8,080	7,580
	Wales	9,970	9,520	9,150	9,560	9,480	9,840	10,280	10,420	10,110	9,960
	UK	203,210	204,110	210,150	205,210	213,060	218,680	227,910	232,630	234,940	231,440

R.7 Placed 18 year old applicants by region of domicile: 6 days after A level results day

Placed 18 year old applicants: change relative to 2017 cycle totals

Applicant Status	Domicile	2009	2010	2011	2012	2013	2014	2015	2016	2017	2018
Placed	North East	-7%	-8%	-6%	-12%	-6%	-8%	-3%	-3%	0%	-7%
	North West	-5%	-4%	-1%	-6%	-5%	-2%	1%	0%	0%	-3%
	Yorkshire and The Humber	-14%	-15%	-11%	-14%	-9%	-5%	-2%	0%	0%	-5%
	East Midlands	-11%	-12%	-10%	-13%	-9%	-7%	-5%	-2%	0%	-2%
	West Midlands	-14%	-15%	-11%	-12%	-8%	-4%	-0%	0%	0%	-3%
	East of England	-15%	-14%	-10%	-13%	-9%	-6%	-4%	-1%	0%	-3%
	London	-29%	-29%	-23%	-23%	-18%	-15%	-8%	-4%	0%	2%
	South East	-17%	-14%	-13%	-13%	-12%	-9%	-5%	-1%	0%	1%
	South West	-14%	-11%	-7%	-12%	-9%	-8%	-1%	-2%	0%	-2%
	(England total)	-16%	-15%	-11%	-14%	-10%	-8%	-3%	-1%	0%	-1%
	Scotland	-2%	-0%	-5%	-4%	-4%	-2%	-1%	0%	0%	-0%
	Northern Ireland	5%	2%	1%	-5%	2%	-1%	-2%	1%	0%	-6%
	Wales	-1%	-6%	-9%	-5%	-6%	-3%	2%	3%	0%	-2%
	UK	-14%	-13%	-11%	-13%	-9%	-7%	-3%	-1%	0%	-1%

Note: The percentage change is not recorded in the above table for groups with fewer than 10 placed applicants in that cycle or in the 2017 cycle.

R.8 Placed 18 year old applicants by region of domicile: 6 days after A level results day

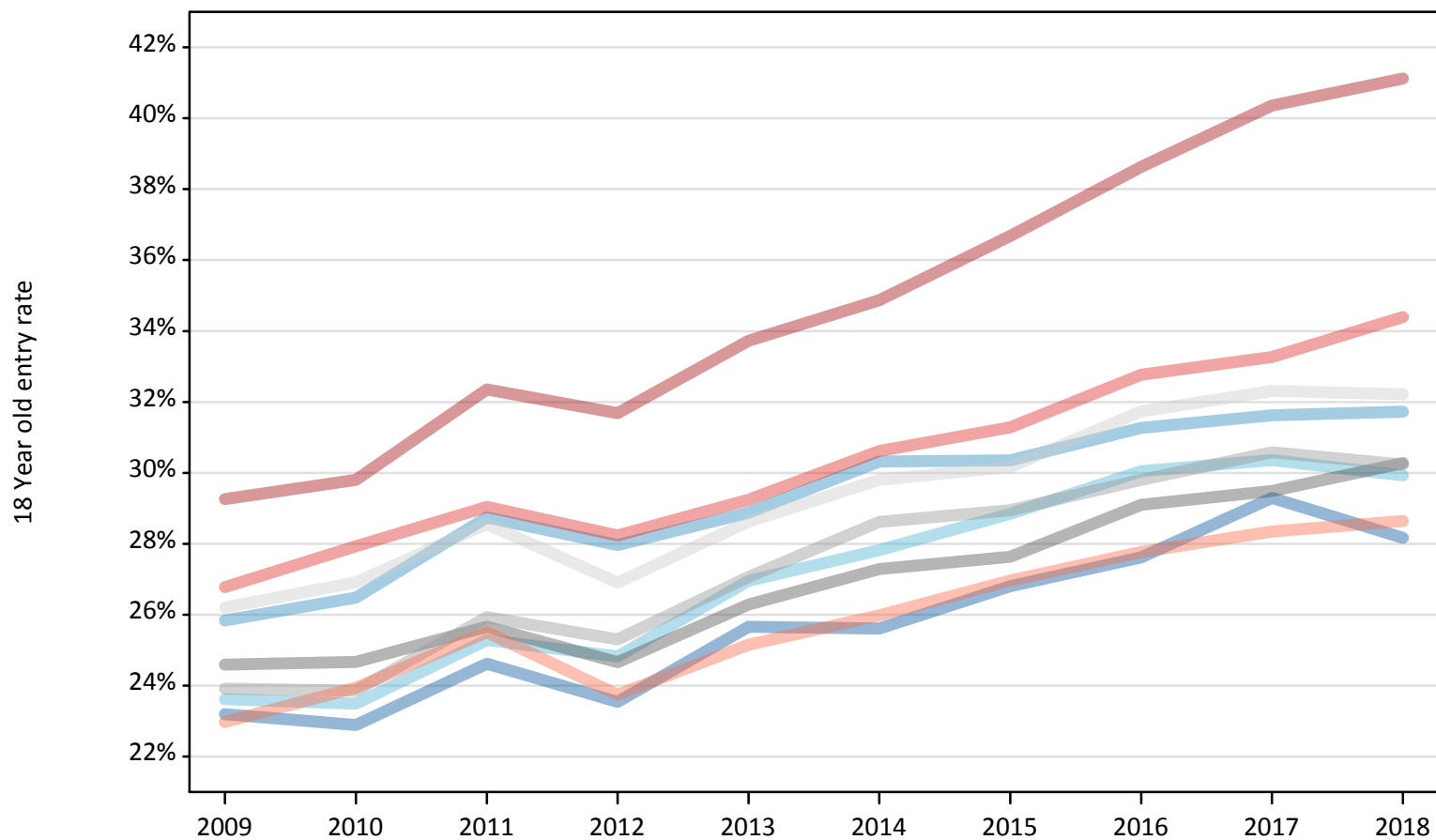
Placed 18 year old applicants: absolute change relative to 2017 cycle totals

Applicant Status	Domicile	2009	2010	2011	2012	2013	2014	2015	2016	2017	2018
Placed	North East	-580	-650	-520	-1,030	-520	-710	-220	-240	0	-560
	North West	-1,370	-1,170	-350	-1,500	-1,240	-420	350	0	0	-720
	Yorkshire and The Humber	-2,630	-2,820	-2,110	-2,550	-1,750	-1,020	-350	20	0	-890
	East Midlands	-1,710	-1,930	-1,650	-2,040	-1,390	-1,160	-750	-280	0	-240
	West Midlands	-2,830	-3,160	-2,390	-2,580	-1,670	-860	-40	40	0	-560
	East of England	-3,350	-3,170	-2,180	-2,900	-2,010	-1,470	-890	-140	0	-650
	London	-10,910	-10,570	-8,440	-8,690	-6,610	-5,430	-3,080	-1,530	0	850
	South East	-5,950	-4,920	-4,370	-4,680	-4,050	-3,220	-1,620	-320	0	230
	South West	-2,340	-1,990	-1,170	-2,140	-1,630	-1,310	-250	-270	0	-310
	(England total)	-31,660	-30,370	-23,160	-28,100	-20,870	-15,600	-6,850	-2,710	0	-2,840
	Scotland	-300	-70	-720	-650	-550	-330	-220	30	0	-10
	Northern Ireland	380	200	50	-430	170	-50	-130	70	0	-500
	Wales	-140	-580	-950	-550	-630	-270	170	320	0	-150
	UK	-31,730	-30,820	-24,790	-29,730	-21,880	-16,250	-7,020	-2,310	0	-3,500

R.9 Placed 18 year old applicants by region of domicile: 6 days after A level results day

Placed 18 year old applicants: entry rate

- North East
- North West
- Yorkshire and The Humber
- East Midlands
- West Midlands
- East of England
- London
- South East
- South West



R.10 Placed 18 year old applicants by region of domicile: 6 days after A level results day

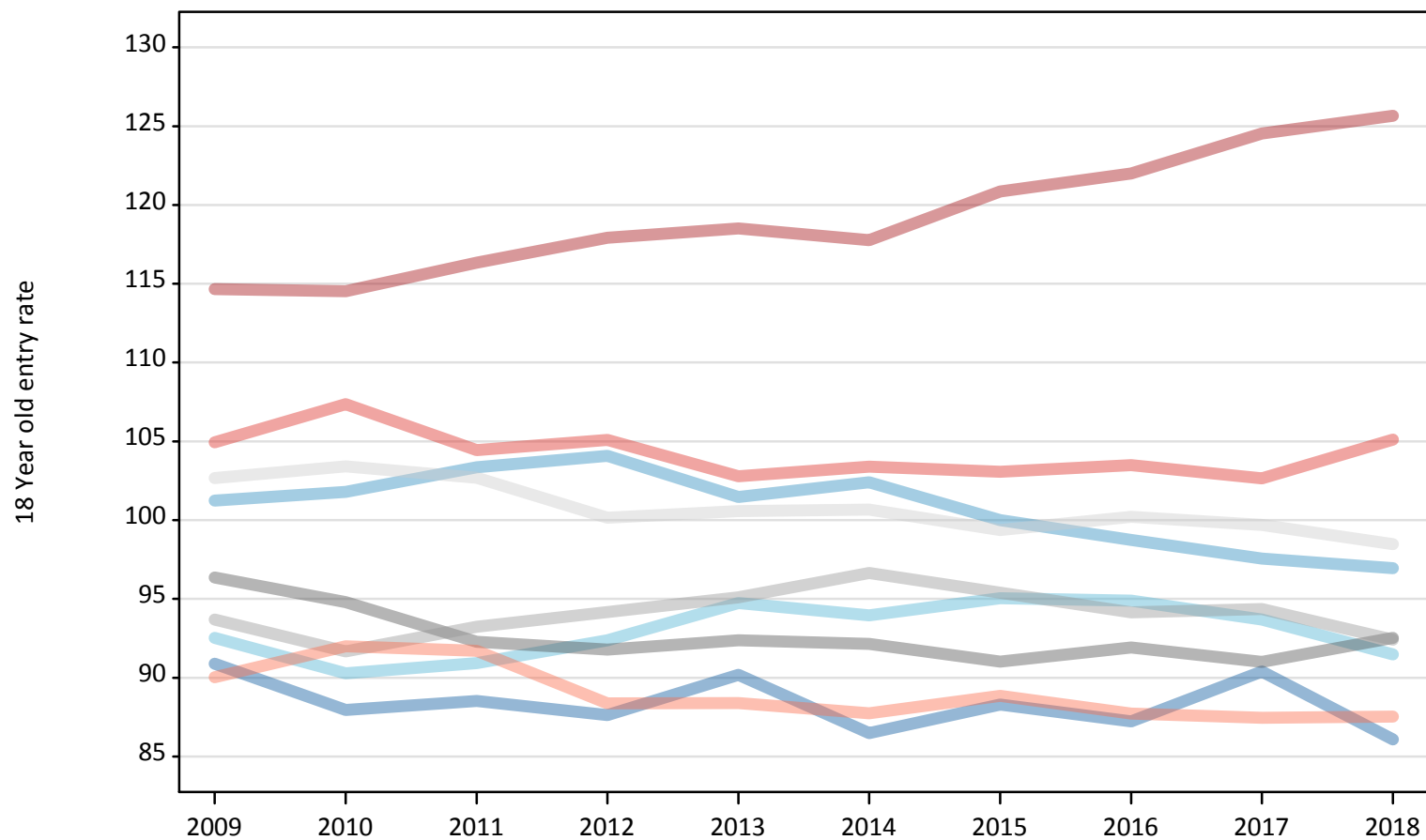
Placed 18 year old applicants: entry rate

Applicant Status	Domicile	2009	2010	2011	2012	2013	2014	2015	2016	2017	2018
Placed	North East	23.2%	22.9%	24.6%	23.5%	25.7%	25.6%	26.8%	27.6%	29.3%	28.2%
	North West	25.8%	26.5%	28.7%	28.0%	28.9%	30.3%	30.4%	31.3%	31.6%	31.7%
	Yorkshire and The Humber	23.6%	23.5%	25.3%	24.8%	27.0%	27.8%	28.8%	30.0%	30.4%	29.9%
	East Midlands	24.6%	24.7%	25.7%	24.7%	26.3%	27.3%	27.6%	29.1%	29.5%	30.3%
	West Midlands	23.9%	23.9%	25.9%	25.3%	27.1%	28.6%	28.9%	29.8%	30.6%	30.2%
	East of England	26.2%	26.9%	28.6%	26.9%	28.6%	29.8%	30.2%	31.7%	32.3%	32.2%
	London	29.3%	29.8%	32.4%	31.7%	33.7%	34.9%	36.7%	38.6%	40.4%	41.1%
	South East	26.8%	27.9%	29.0%	28.2%	29.2%	30.6%	31.3%	32.8%	33.3%	34.4%
	South West	23.0%	23.9%	25.5%	23.7%	25.2%	26.0%	27.0%	27.8%	28.3%	28.6%
	(England total)	25.5%	26.0%	27.8%	26.9%	28.5%	29.6%	30.4%	31.7%	32.4%	32.7%
	Scotland	22.0%	22.7%	22.1%	22.5%	22.8%	23.3%	23.9%	24.8%	25.4%	26.2%
	Northern Ireland	32.5%	32.4%	32.5%	30.4%	33.6%	33.1%	32.0%	33.3%	33.4%	32.7%
	Wales	24.7%	23.9%	23.7%	24.8%	25.1%	26.2%	27.3%	28.7%	28.5%	28.9%
	UK	25.4%	25.9%	27.3%	26.5%	28.0%	29.0%	29.7%	31.0%	31.7%	32.0%

R.11 Placed 18 year old applicants by region of domicile: 6 days after A level results day

Placed 18 year old applicants: entry rates (indexed to 100 = England)

- North East
- North West
- Yorkshire and The Humber
- East Midlands
- West Midlands
- East of England
- London
- South East
- South West



R.12 Placed 18 year old applicants by region of domicile: 6 days after A level results day

Placed 18 year old applicants: entry rate (indexed to 100 = England)

Applicant Status	Domicile	2009	2010	2011	2012	2013	2014	2015	2016	2017	2018
Placed	North East	91	88	89	88	90	86	88	87	90	86
	North West	101	102	103	104	101	102	100	99	98	97
	Yorkshire and The Humber	93	90	91	92	95	94	95	95	94	91
	East Midlands	96	95	92	92	92	92	91	92	91	93
	West Midlands	94	92	93	94	95	97	95	94	94	92
	East of England	103	103	103	100	101	101	99	100	100	98
	London	115	115	116	118	119	118	121	122	125	126
	South East	105	107	104	105	103	103	103	103	103	105
	South West	90	92	92	88	88	88	89	88	87	88
	(England total)	100	100	100	100	100	100	100	100	100	100