

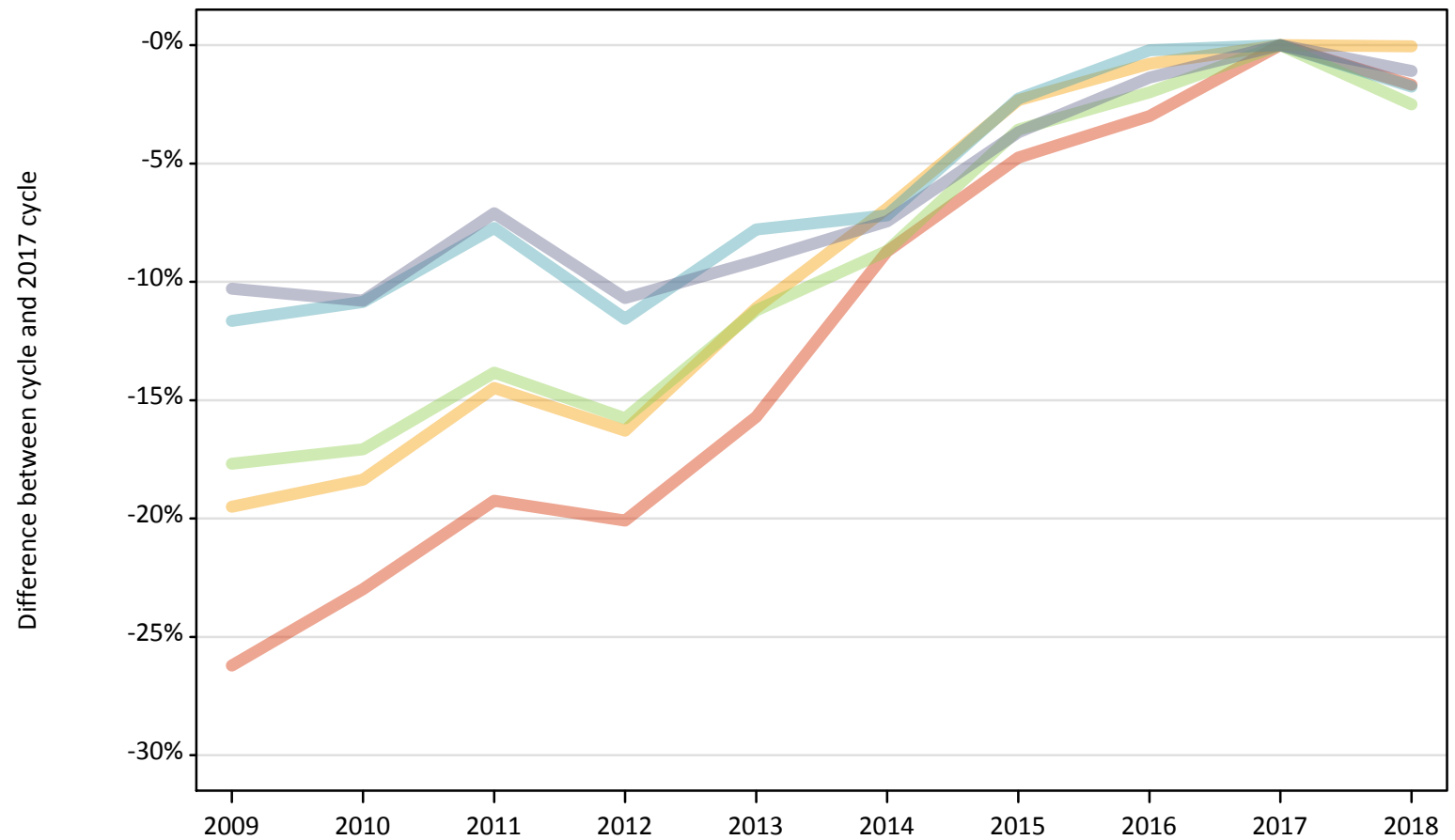
# Daily Clearing Analysis: POLAR3

Analysis at 00:05 on Thursday 23 August 2018 (7 days after A level results day)

P.1 Placed 18 year old applicants from England by POLAR3 quintile: 7 days after A level results day

Placed 18 year old applicants: change relative to 2017 cycle totals

- Quintile 1
- Quintile 2
- Quintile 3
- Quintile 4
- Quintile 5



Note: The percentage change is not plotted in the above chart for groups with fewer than 30 placed applicants in any one cycle.

## P.2 Placed 18 year old applicants from England by POLAR3 quintile: 7 days after A level results day

Applicant Status	POLAR3	2009	2010	2011	2012	2013	2014	2015	2016	2017	2018
Placed	Quintile 1	16,670	17,400	18,240	18,050	19,040	20,620	21,520	21,910	22,590	22,210
	Quintile 2	25,130	25,490	26,690	26,130	27,750	29,060	30,490	30,970	31,220	31,200
	Quintile 3	33,150	33,390	34,690	33,910	35,750	36,770	38,830	39,460	40,270	39,260
	Quintile 4	41,080	41,450	42,900	41,120	42,870	43,150	45,450	46,390	46,500	45,680
	Quintile 5	56,000	55,680	57,980	55,750	56,720	57,780	60,120	61,560	62,420	61,740

## P.3 Placed 18 year old applicants from England by POLAR3 quintile: 7 days after A level results day

Placed 18 year old applicants: change relative to 2017 cycle totals

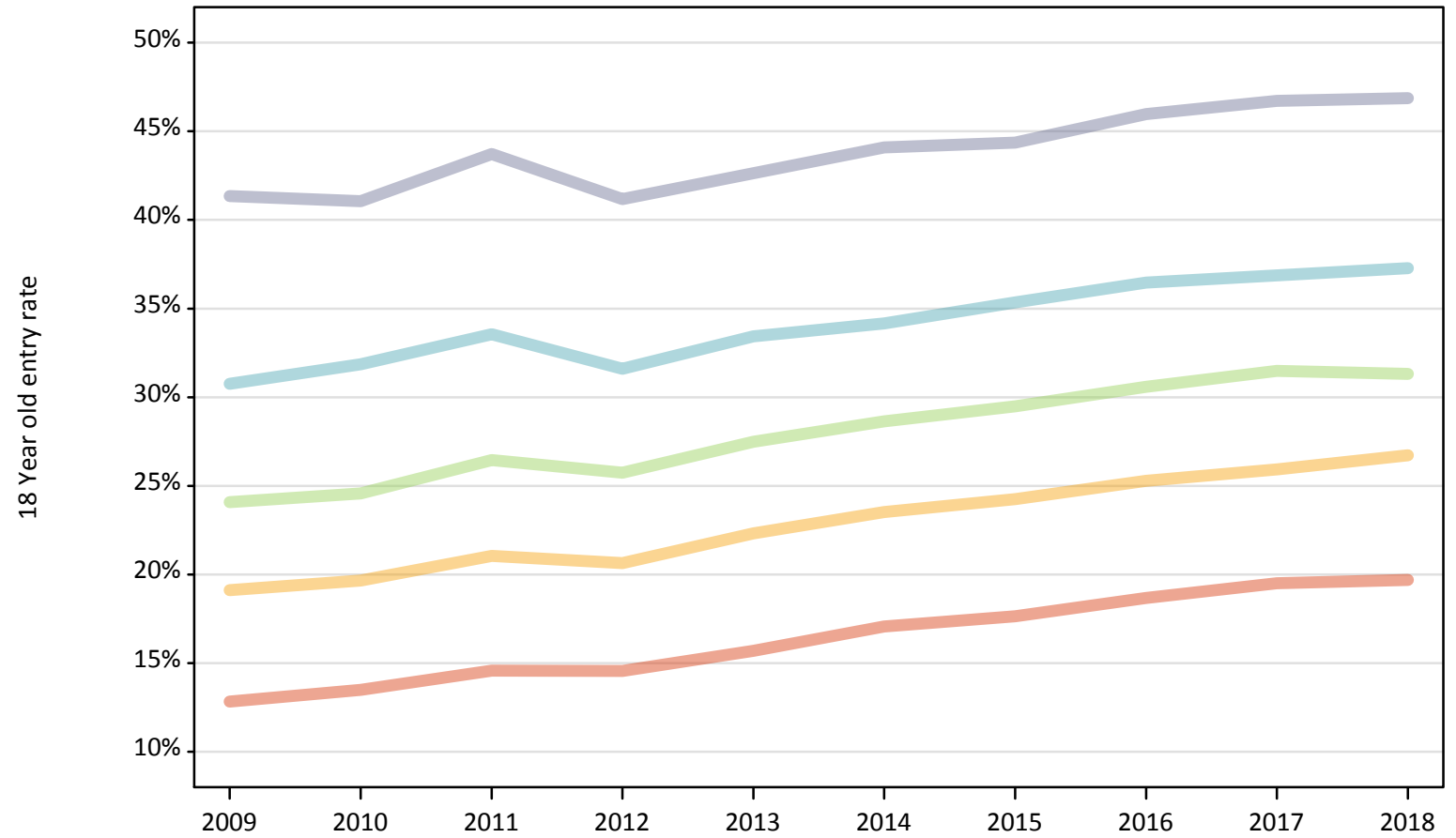
Applicant Status	POLAR3	2009	2010	2011	2012	2013	2014	2015	2016	2017	2018
Placed	Quintile 1	-26%	-23%	-19%	-20%	-16%	-9%	-5%	-3%	0%	-2%
	Quintile 2	-20%	-18%	-14%	-16%	-11%	-7%	-2%	-1%	0%	-0%
	Quintile 3	-18%	-17%	-14%	-16%	-11%	-9%	-4%	-2%	0%	-3%
	Quintile 4	-12%	-11%	-8%	-12%	-8%	-7%	-2%	-0%	0%	-2%
	Quintile 5	-10%	-11%	-7%	-11%	-9%	-7%	-4%	-1%	0%	-1%

Note: The percentage change is not recorded in the above table for groups with fewer than 10 placed applicants in that cycle or in the 2017 cycle.

## P.4 Placed 18 year old applicants from England by POLAR3 quintile: 7 days after A level results day

Placed 18 year old applicants: entry rate

- Quintile 1
- Quintile 2
- Quintile 3
- Quintile 4
- Quintile 5



**P.5 Placed 18 year old applicants from England by POLAR3 quintile: 7 days after A level results day**

Placed 18 year old applicants: entry rate

Applicant Status	POLAR3	2009	2010	2011	2012	2013	2014	2015	2016	2017	2018
Placed	Quintile 1	12.8%	13.5%	14.6%	14.6%	15.7%	17.1%	17.6%	18.7%	19.5%	19.7%
	Quintile 2	19.1%	19.7%	21.0%	20.6%	22.3%	23.5%	24.2%	25.3%	25.9%	26.7%
	Quintile 3	24.1%	24.6%	26.5%	25.7%	27.5%	28.6%	29.5%	30.6%	31.5%	31.3%
	Quintile 4	30.8%	31.8%	33.6%	31.6%	33.4%	34.2%	35.3%	36.5%	36.9%	37.3%
	Quintile 5	41.3%	41.1%	43.7%	41.2%	42.6%	44.1%	44.4%	46.0%	46.7%	46.9%

**P.6 Placed 18 year old applicants from England by POLAR3 quintile: 7 days after A level results day**

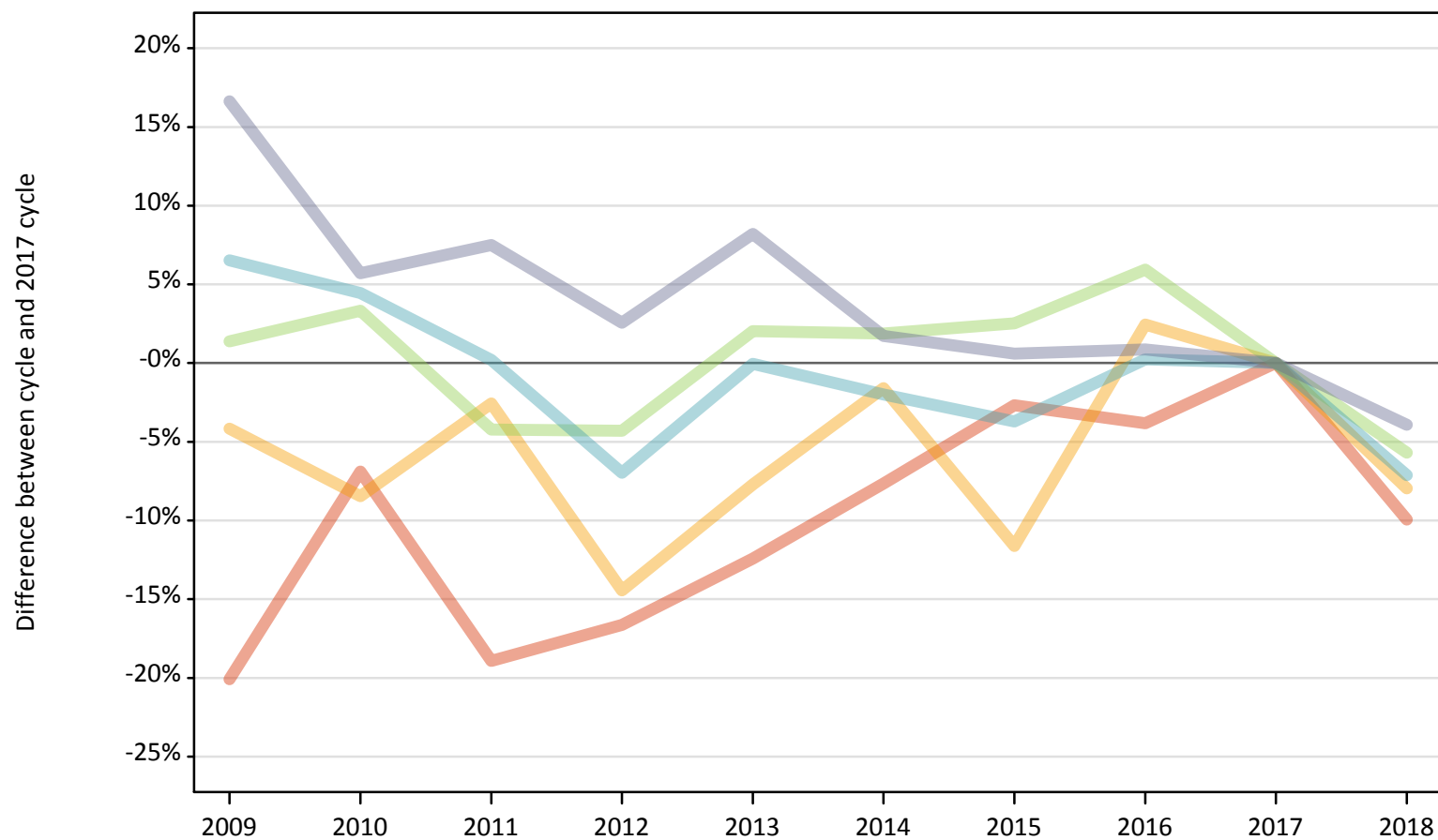
Placed 18 year old applicants: entry rate (indexed to 100 = Quintile 1)

Applicant Status	POLAR3	2009	2010	2011	2012	2013	2014	2015	2016	2017	2018
Placed	Quintile 1	100	100	100	100	100	100	100	100	100	100
	Quintile 2	149	146	144	142	142	138	137	135	133	136
	Quintile 3	188	182	182	177	175	168	167	164	161	159
	Quintile 4	240	236	230	217	213	200	200	195	189	189
	Quintile 5	322	304	300	283	271	258	251	246	239	238

### P.7 Placed 18 year old applicants from Northern Ireland by POLAR3 quintile: 7 days after A level results day

Placed 18 year old applicants: change relative to 2017 cycle totals

- Quintile 1
- Quintile 2
- Quintile 3
- Quintile 4
- Quintile 5



Note: The percentage change is not plotted in the above chart for groups with fewer than 30 placed applicants in any one cycle.

**P.8 Placed 18 year old applicants from Northern Ireland by POLAR3 quintile: 7 days after A level results day**

Applicant Status	POLAR3	2009	2010	2011	2012	2013	2014	2015	2016	2017	2018
Placed	Quintile 1	420	490	420	440	460	480	510	500	520	470
	Quintile 2	780	750	800	700	750	800	720	840	820	750
	Quintile 3	1,250	1,270	1,180	1,180	1,260	1,250	1,260	1,300	1,230	1,160
	Quintile 4	2,680	2,620	2,520	2,340	2,510	2,460	2,420	2,520	2,510	2,330
	Quintile 5	3,640	3,300	3,360	3,200	3,380	3,180	3,140	3,150	3,120	3,000

**P.9 Placed 18 year old applicants from Northern Ireland by POLAR3 quintile: 7 days after A level results day**

Placed 18 year old applicants: change relative to 2017 cycle totals

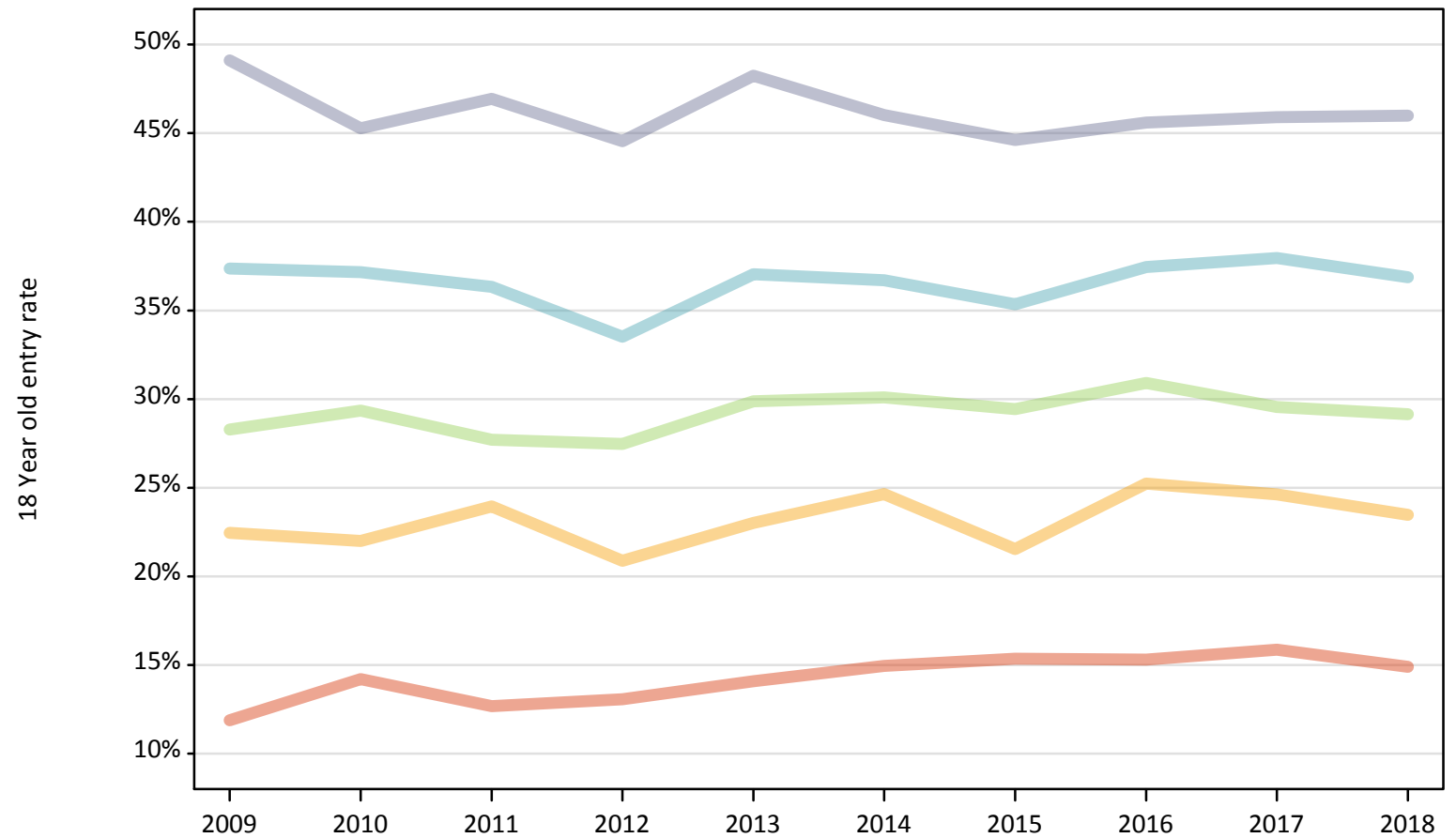
Applicant Status	POLAR3	2009	2010	2011	2012	2013	2014	2015	2016	2017	2018
Placed	Quintile 1	-20%	-7%	-19%	-17%	-12%	-8%	-3%	-4%	0%	-10%
	Quintile 2	-4%	-8%	-3%	-14%	-8%	-2%	-12%	2%	0%	-8%
	Quintile 3	1%	3%	-4%	-4%	2%	2%	3%	6%	0%	-6%
	Quintile 4	7%	4%	0%	-7%	-0%	-2%	-4%	0%	0%	-7%
	Quintile 5	17%	6%	7%	3%	8%	2%	1%	1%	0%	-4%

Note: The percentage change is not recorded in the above table for groups with fewer than 10 placed applicants in that cycle or in the 2017 cycle.

**P.10 Placed 18 year old applicants from Northern Ireland by POLAR3 quintile: 7 days after A level results day**

Placed 18 year old applicants: entry rate

- Quintile 1
- Quintile 2
- Quintile 3
- Quintile 4
- Quintile 5



**P.11 Placed 18 year old applicants from Northern Ireland by POLAR3 quintile: 7 days after A level results day**

Placed 18 year old applicants: entry rate

Applicant Status	POLAR3	2009	2010	2011	2012	2013	2014	2015	2016	2017	2018
Placed	Quintile 1	11.9%	14.2%	12.7%	13.1%	14.1%	14.9%	15.4%	15.3%	15.9%	14.9%
	Quintile 2	22.5%	22.0%	24.0%	20.9%	23.0%	24.6%	21.5%	25.2%	24.6%	23.5%
	Quintile 3	28.3%	29.3%	27.7%	27.5%	29.9%	30.1%	29.4%	30.9%	29.6%	29.1%
	Quintile 4	37.4%	37.2%	36.3%	33.5%	37.0%	36.7%	35.3%	37.5%	37.9%	36.9%
	Quintile 5	49.1%	45.3%	46.9%	44.5%	48.2%	46.0%	44.6%	45.6%	45.9%	46.0%

**P.12 Placed 18 year old applicants from Northern Ireland by POLAR3 quintile: 7 days after A level results day**

Placed 18 year old applicants: entry rate (indexed to 100 = Quintile 1)

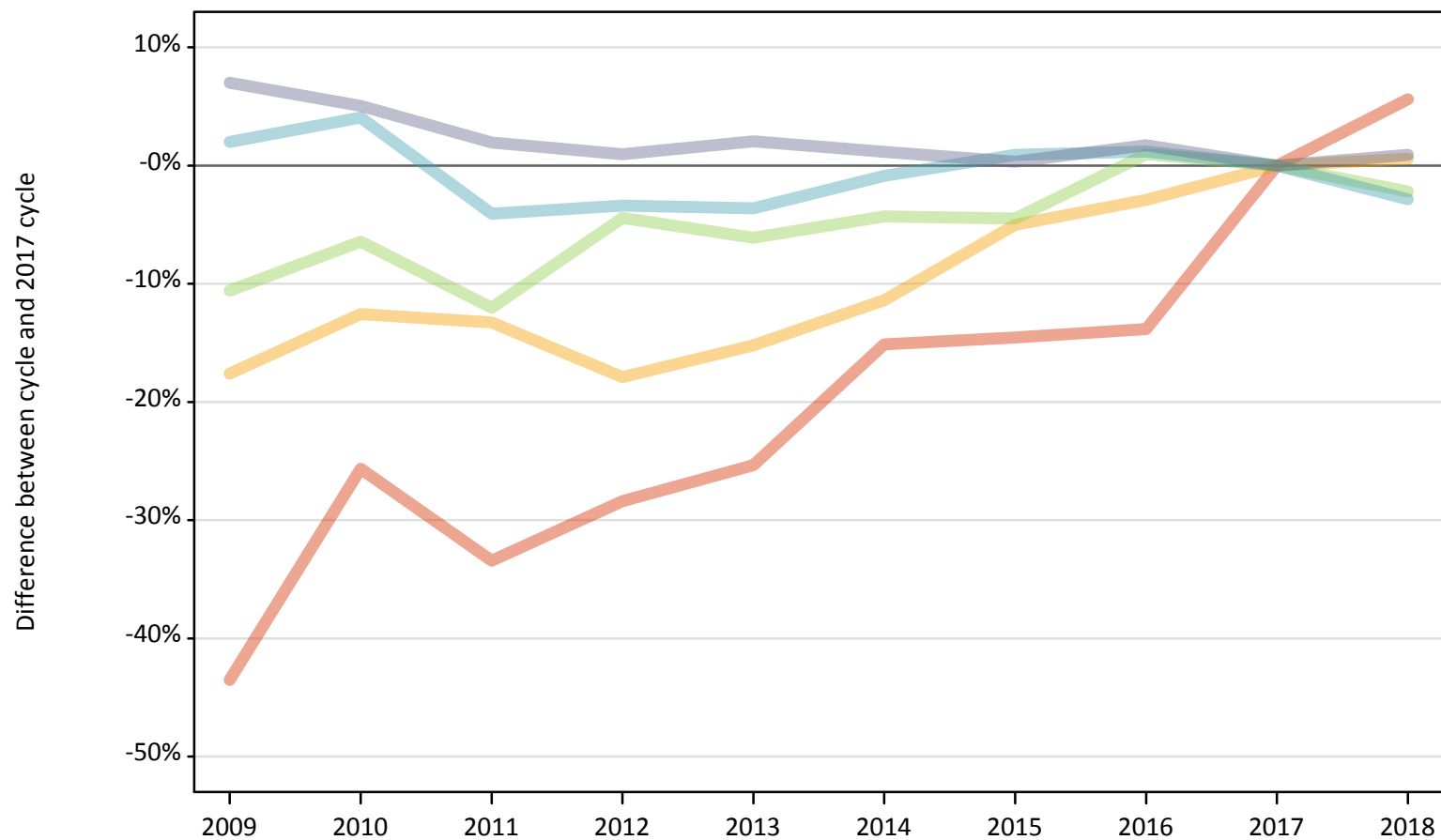
Applicant Status	POLAR3	2009	2010	2011	2012	2013	2014	2015	2016	2017	2018
Placed	Quintile 1	100	100	100	100	100	100	100	100	100	100
	Quintile 2	189	155	189	160	163	165	140	165	155	157
	Quintile 3	238	207	219	210	212	201	192	202	186	196
	Quintile 4	314	262	287	257	263	246	230	245	239	247
	Quintile 5	413	319	370	341	342	308	290	298	289	309



### P.13 Placed 18 year old applicants from Scotland by POLAR3 quintile: 7 days after A level results day

Placed 18 year old applicants: change relative to 2017 cycle totals

- Quintile 1
- Quintile 2
- Quintile 3
- Quintile 4
- Quintile 5



Note: The percentage change is not plotted in the above chart for groups with fewer than 30 placed applicants in any one cycle.

**P.14 Placed 18 year old applicants from Scotland by POLAR3 quintile: 7 days after A level results day**

Applicant Status	POLAR3	2009	2010	2011	2012	2013	2014	2015	2016	2017	2018
Placed	Quintile 1	390	520	460	500	520	590	590	600	690	730
	Quintile 2	1,280	1,360	1,350	1,270	1,320	1,380	1,470	1,510	1,550	1,560
	Quintile 3	2,040	2,130	2,010	2,180	2,140	2,180	2,180	2,300	2,280	2,230
	Quintile 4	3,460	3,530	3,260	3,280	3,270	3,370	3,430	3,440	3,400	3,300
	Quintile 5	7,120	6,990	6,780	6,720	6,790	6,730	6,680	6,770	6,650	6,710

**P.15 Placed 18 year old applicants from Scotland by POLAR3 quintile: 7 days after A level results day**

Placed 18 year old applicants: change relative to 2017 cycle totals

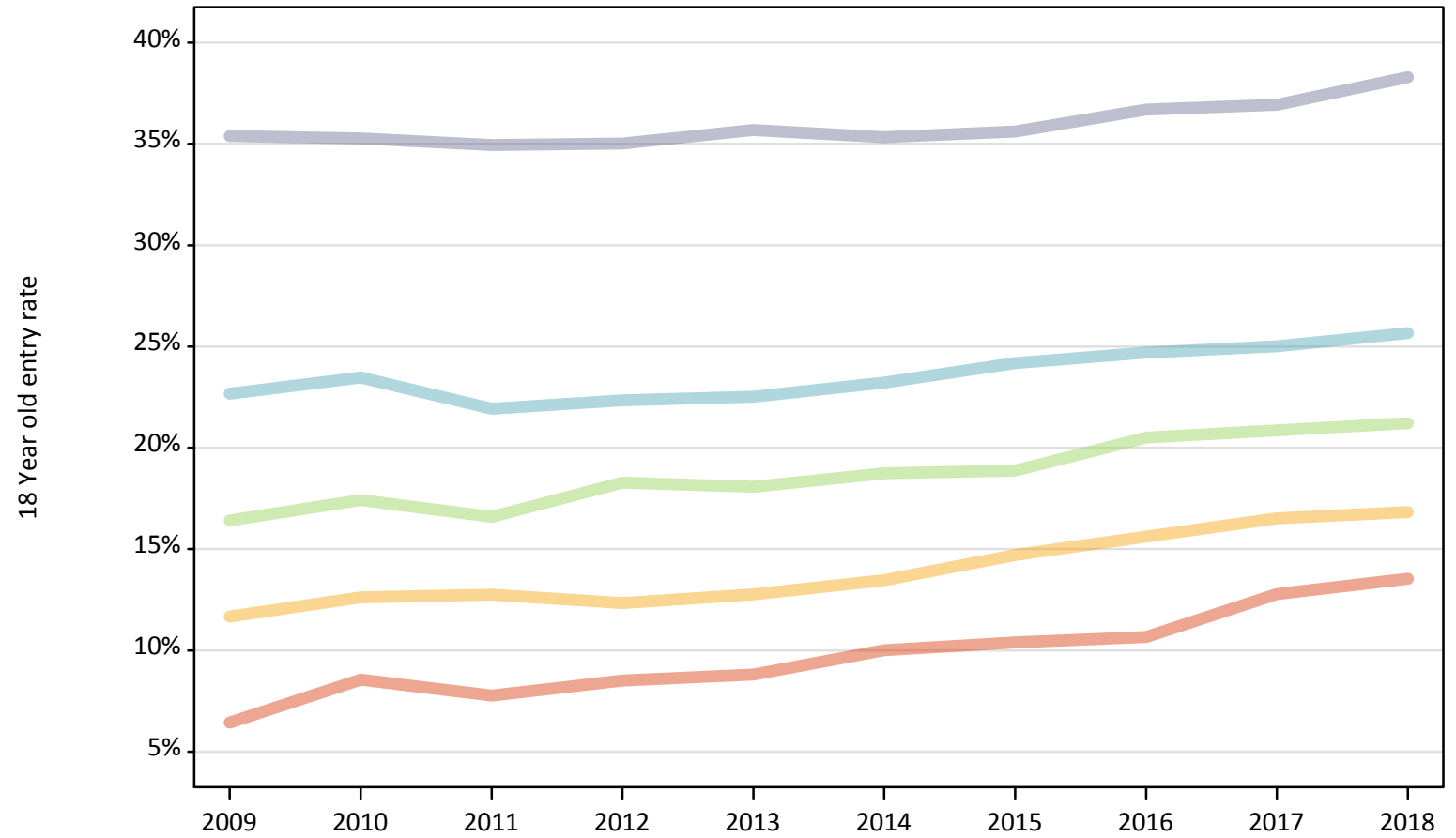
Applicant Status	POLAR3	2009	2010	2011	2012	2013	2014	2015	2016	2017	2018
Placed	Quintile 1	-44%	-26%	-33%	-28%	-25%	-15%	-15%	-14%	0%	6%
	Quintile 2	-18%	-13%	-13%	-18%	-15%	-11%	-5%	-3%	0%	1%
	Quintile 3	-11%	-6%	-12%	-4%	-6%	-4%	-4%	1%	0%	-2%
	Quintile 4	2%	4%	-4%	-3%	-4%	-1%	1%	1%	0%	-3%
	Quintile 5	7%	5%	2%	1%	2%	1%	0%	2%	0%	1%

Note: The percentage change is not recorded in the above table for groups with fewer than 10 placed applicants in that cycle or in the 2017 cycle.

**P.16 Placed 18 year old applicants from Scotland by POLAR3 quintile: 7 days after A level results day**

Placed 18 year old applicants: entry rate

- Quintile 1
- Quintile 2
- Quintile 3
- Quintile 4
- Quintile 5



**P.17 Placed 18 year old applicants from Scotland by POLAR3 quintile: 7 days after A level results day**

Placed 18 year old applicants: entry rate

Applicant Status	POLAR3	2009	2010	2011	2012	2013	2014	2015	2016	2017	2018
Placed	Quintile 1	6.4%	8.6%	7.8%	8.5%	8.8%	10.0%	10.4%	10.7%	12.8%	13.5%
	Quintile 2	11.7%	12.6%	12.7%	12.3%	12.8%	13.5%	14.7%	15.6%	16.5%	16.8%
	Quintile 3	16.4%	17.4%	16.6%	18.3%	18.1%	18.7%	18.9%	20.5%	20.9%	21.2%
	Quintile 4	22.7%	23.5%	21.9%	22.3%	22.5%	23.2%	24.2%	24.7%	25.0%	25.7%
	Quintile 5	35.4%	35.3%	34.9%	35.0%	35.7%	35.3%	35.6%	36.7%	36.9%	38.3%

**P.18 Placed 18 year old applicants from Scotland by POLAR3 quintile: 7 days after A level results day**

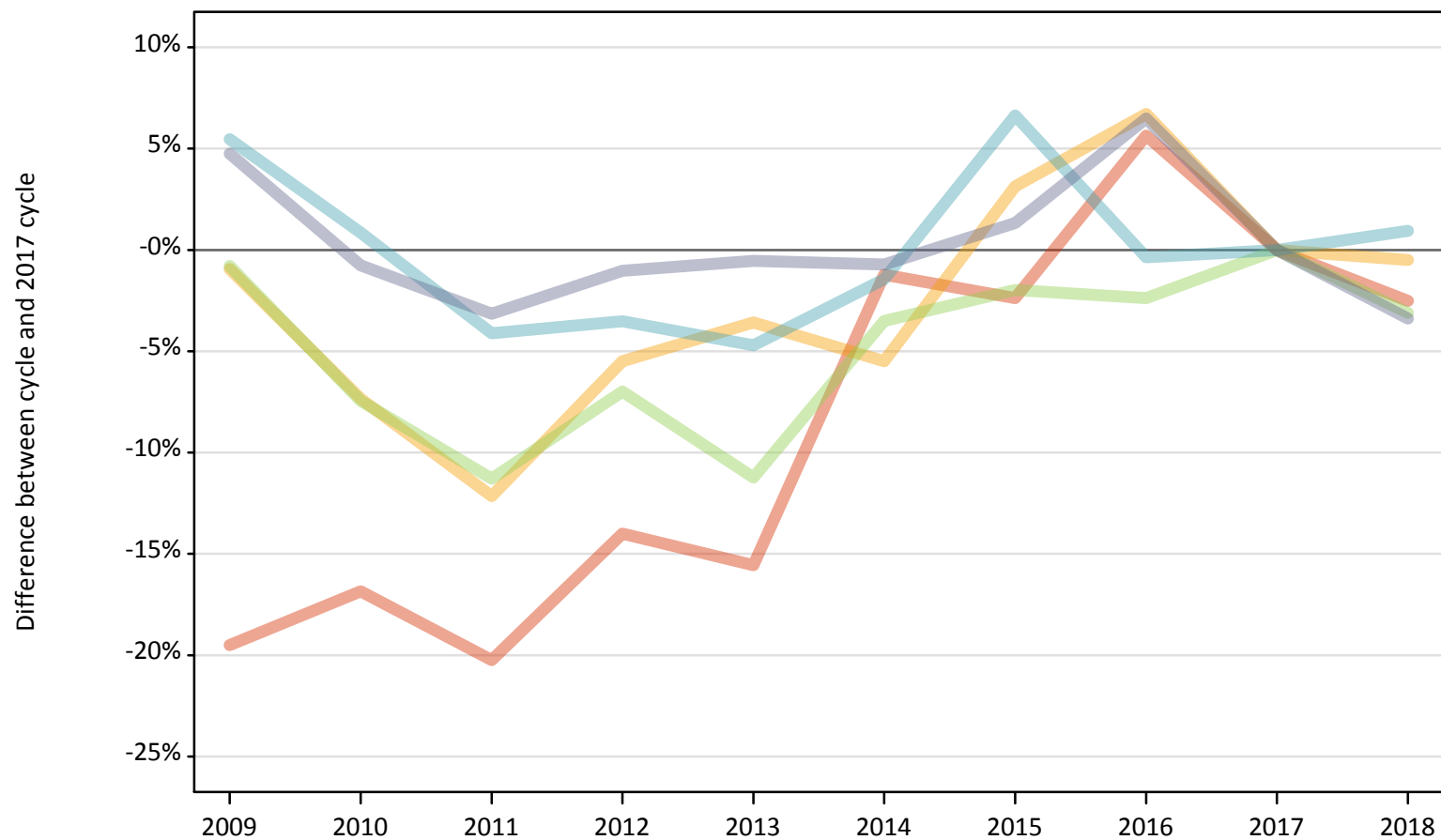
Placed 18 year old applicants: entry rate (indexed to 100 = Quintile 1)

Applicant Status	POLAR3	2009	2010	2011	2012	2013	2014	2015	2016	2017	2018
Placed	Quintile 1	100	100	100	100	100	100	100	100	100	100
	Quintile 2	181	147	164	145	145	135	142	146	129	124
	Quintile 3	255	204	214	215	205	187	182	192	163	157
	Quintile 4	352	274	282	262	256	232	233	232	196	190
	Quintile 5	550	412	450	411	405	353	343	344	289	283

### P.19 Placed 18 year old applicants from Wales by POLAR3 quintile: 7 days after A level results day

Placed 18 year old applicants: change relative to 2017 cycle totals

- Quintile 1
- Quintile 2
- Quintile 3
- Quintile 4
- Quintile 5



Note: The percentage change is not plotted in the above chart for groups with fewer than 30 placed applicants in any one cycle.

**P.20 Placed 18 year old applicants from Wales by POLAR3 quintile: 7 days after A level results day**

Applicant Status	POLAR3	2009	2010	2011	2012	2013	2014	2015	2016	2017	2018
Placed	Quintile 1	1,190	1,220	1,170	1,270	1,240	1,450	1,440	1,560	1,470	1,440
	Quintile 2	2,020	1,890	1,790	1,930	1,970	1,930	2,110	2,180	2,040	2,030
	Quintile 3	1,760	1,640	1,570	1,650	1,570	1,710	1,740	1,730	1,770	1,720
	Quintile 4	2,330	2,230	2,120	2,140	2,110	2,180	2,360	2,210	2,210	2,230
	Quintile 5	2,760	2,610	2,550	2,610	2,620	2,610	2,670	2,800	2,630	2,540

**P.21 Placed 18 year old applicants from Wales by POLAR3 quintile: 7 days after A level results day**

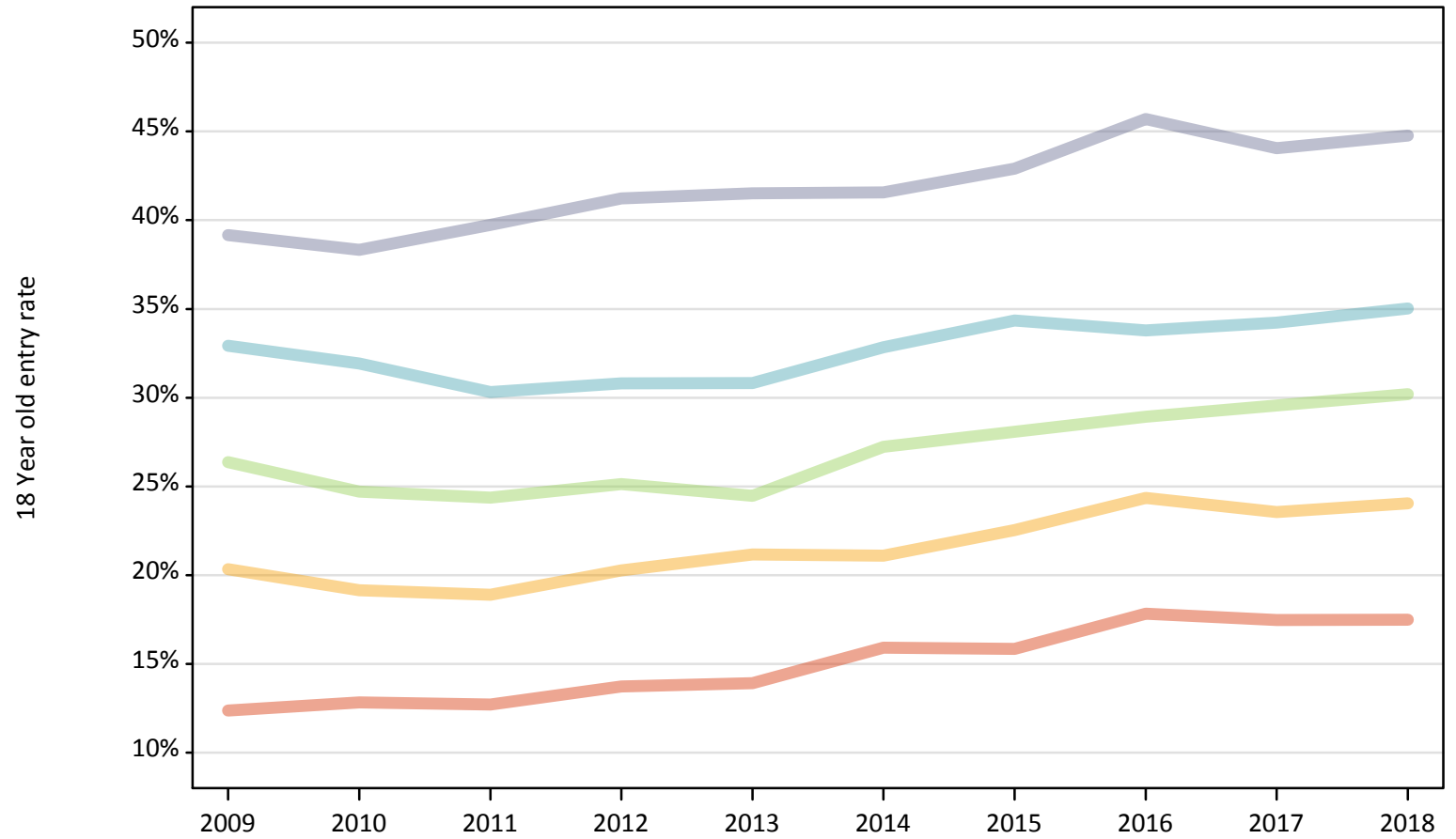
Placed 18 year old applicants: change relative to 2017 cycle totals

Applicant Status	POLAR3	2009	2010	2011	2012	2013	2014	2015	2016	2017	2018
Placed	Quintile 1	-19%	-17%	-20%	-14%	-16%	-1%	-2%	6%	0%	-3%
	Quintile 2	-1%	-7%	-12%	-5%	-4%	-5%	3%	7%	0%	-0%
	Quintile 3	-1%	-7%	-11%	-7%	-11%	-3%	-2%	-2%	0%	-3%
	Quintile 4	5%	1%	-4%	-4%	-5%	-1%	7%	-0%	0%	1%
	Quintile 5	5%	-1%	-3%	-1%	-1%	-1%	1%	6%	0%	-3%

Note: The percentage change is not recorded in the above table for groups with fewer than 10 placed applicants in that cycle or in the 2017 cycle.

**P.22 Placed 18 year old applicants from Wales by POLAR3 quintile: 7 days after A level results day**  
Placed 18 year old applicants: entry rate

- Quintile 1
- Quintile 2
- Quintile 3
- Quintile 4
- Quintile 5



**P.23 Placed 18 year old applicants from Wales by POLAR3 quintile: 7 days after A level results day**

Placed 18 year old applicants: entry rate

Applicant Status	POLAR3	2009	2010	2011	2012	2013	2014	2015	2016	2017	2018
Placed	Quintile 1	12.4%	12.8%	12.7%	13.7%	13.9%	15.9%	15.8%	17.8%	17.5%	17.5%
	Quintile 2	20.3%	19.1%	18.9%	20.3%	21.2%	21.1%	22.5%	24.3%	23.5%	24.0%
	Quintile 3	26.4%	24.7%	24.4%	25.1%	24.5%	27.2%	28.1%	28.9%	29.6%	30.2%
	Quintile 4	32.9%	31.9%	30.3%	30.8%	30.8%	32.8%	34.4%	33.8%	34.2%	35.0%
	Quintile 5	39.2%	38.3%	39.7%	41.2%	41.5%	41.6%	42.9%	45.7%	44.1%	44.8%

**P.24 Placed 18 year old applicants from Wales by POLAR3 quintile: 7 days after A level results day**

Placed 18 year old applicants: entry rate (indexed to 100 = Quintile 1)

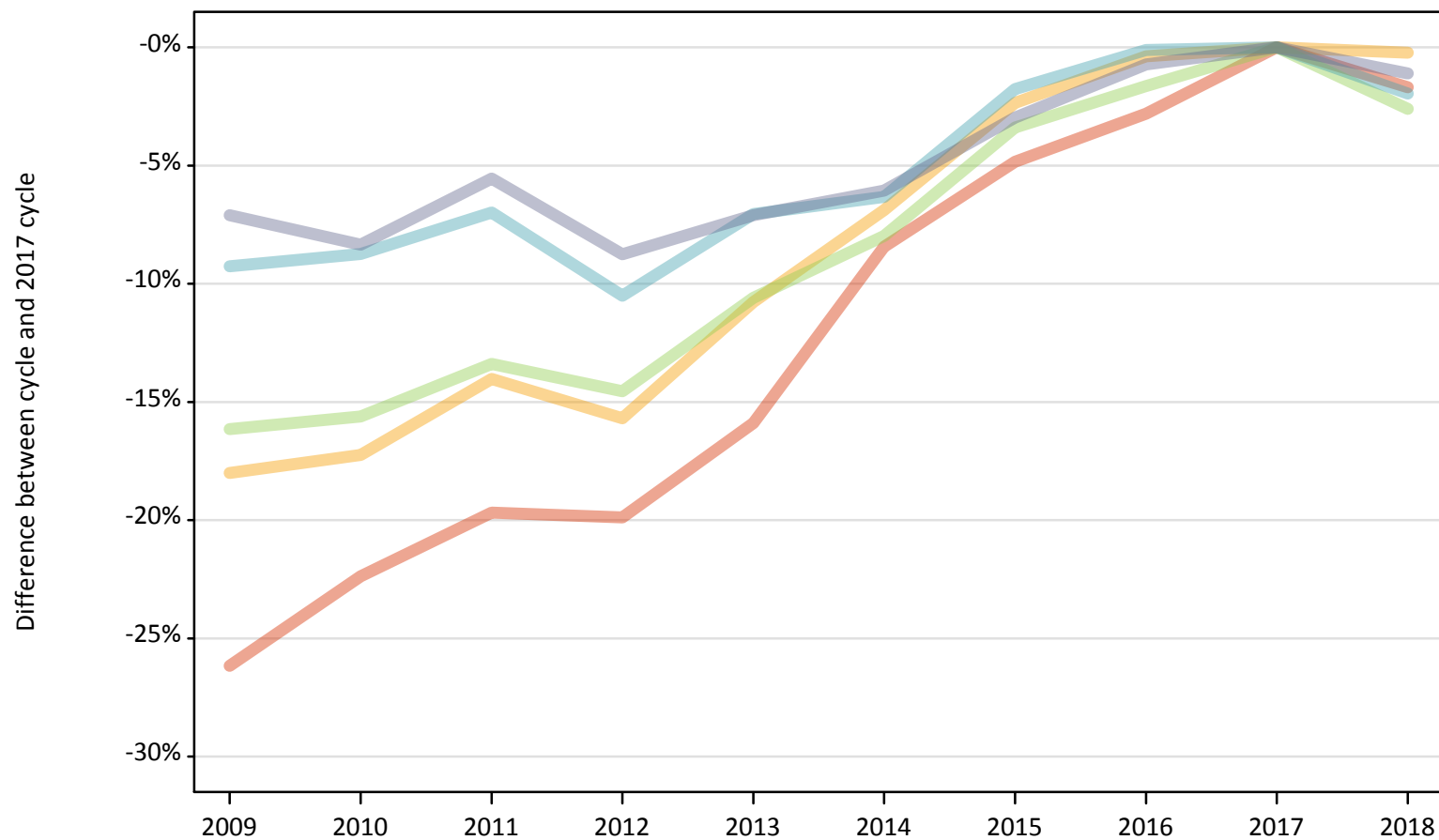
Applicant Status	POLAR3	2009	2010	2011	2012	2013	2014	2015	2016	2017	2018
Placed	Quintile 1	100	100	100	100	100	100	100	100	100	100
	Quintile 2	164	149	149	148	152	133	142	137	135	138
	Quintile 3	213	193	192	183	176	171	177	162	169	173
	Quintile 4	266	249	238	224	222	206	217	189	196	200
	Quintile 5	317	299	313	300	298	261	271	256	252	256



## P.25 Placed 18 year old applicants from the UK by POLAR3 quintile: 7 days after A level results day

Placed 18 year old applicants: change relative to 2017 cycle totals

- Quintile 1
- Quintile 2
- Quintile 3
- Quintile 4
- Quintile 5



Note: The percentage change is not plotted in the above chart for groups with fewer than 30 placed applicants in any one cycle.

**P.26 Placed 18 year old applicants from the UK by POLAR3 quintile: 7 days after A level results day**

Applicant Status	POLAR3	2009	2010	2011	2012	2013	2014	2015	2016	2017	2018
Placed	Quintile 1	18,660	19,620	20,300	20,250	21,260	23,150	24,060	24,570	25,280	24,850
	Quintile 2	29,210	29,480	30,630	30,030	31,790	33,170	34,790	35,490	35,630	35,550
	Quintile 3	38,190	38,430	39,450	38,920	40,720	41,910	44,000	44,800	45,550	44,370
	Quintile 4	49,560	49,840	50,800	48,880	50,770	51,160	53,650	54,550	54,620	53,550
	Quintile 5	69,510	68,580	70,670	68,270	69,510	70,290	72,600	74,280	74,830	74,000

**P.27 Placed 18 year old applicants from the UK by POLAR3 quintile: 7 days after A level results day**

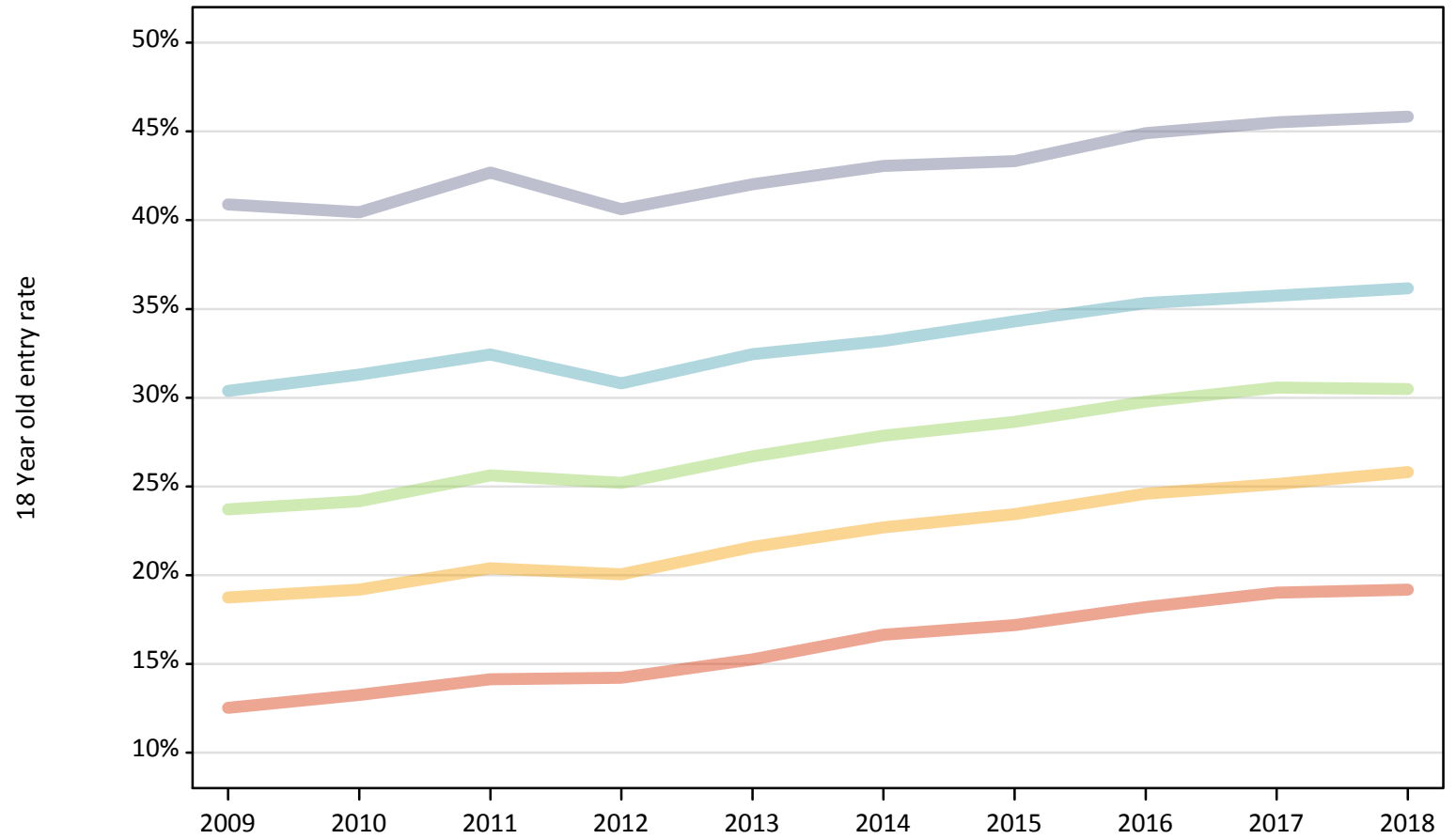
Placed 18 year old applicants: change relative to 2017 cycle totals

Applicant Status	POLAR3	2009	2010	2011	2012	2013	2014	2015	2016	2017	2018
Placed	Quintile 1	-26%	-22%	-20%	-20%	-16%	-8%	-5%	-3%	0%	-2%
	Quintile 2	-18%	-17%	-14%	-16%	-11%	-7%	-2%	-0%	0%	-0%
	Quintile 3	-16%	-16%	-13%	-15%	-11%	-8%	-3%	-2%	0%	-3%
	Quintile 4	-9%	-9%	-7%	-11%	-7%	-6%	-2%	-0%	0%	-2%
	Quintile 5	-7%	-8%	-6%	-9%	-7%	-6%	-3%	-1%	0%	-1%

Note: The percentage change is not recorded in the above table for groups with fewer than 10 placed applicants in that cycle or in the 2017 cycle.

**P.28 Placed 18 year old applicants from the UK by POLAR3 quintile: 7 days after A level results day**  
Placed 18 year old applicants: entry rate

- Quintile 1
- Quintile 2
- Quintile 3
- Quintile 4
- Quintile 5



**P.29 Placed 18 year old applicants from the UK by POLAR3 quintile: 7 days after A level results day**

Placed 18 year old applicants: entry rate

Applicant Status	POLAR3	2009	2010	2011	2012	2013	2014	2015	2016	2017	2018
Placed	Quintile 1	12.5%	13.3%	14.1%	14.2%	15.3%	16.6%	17.2%	18.2%	19.0%	19.2%
	Quintile 2	18.7%	19.2%	20.4%	20.0%	21.6%	22.7%	23.4%	24.6%	25.1%	25.8%
	Quintile 3	23.7%	24.2%	25.6%	25.2%	26.7%	27.9%	28.6%	29.8%	30.6%	30.5%
	Quintile 4	30.4%	31.3%	32.4%	30.8%	32.5%	33.2%	34.3%	35.3%	35.7%	36.2%
	Quintile 5	40.9%	40.5%	42.7%	40.6%	42.0%	43.1%	43.3%	44.9%	45.5%	45.8%

**P.30 Placed 18 year old applicants from the UK by POLAR3 quintile: 7 days after A level results day**

Placed 18 year old applicants: entry rate (indexed to 100 = Quintile 1)

Applicant Status	POLAR3	2009	2010	2011	2012	2013	2014	2015	2016	2017	2018
Placed	Quintile 1	100	100	100	100	100	100	100	100	100	100
	Quintile 2	150	145	144	141	142	136	136	135	132	135
	Quintile 3	189	182	181	177	175	167	167	164	161	159
	Quintile 4	243	236	230	217	213	199	200	194	188	189
	Quintile 5	327	305	302	286	275	259	252	247	239	239