

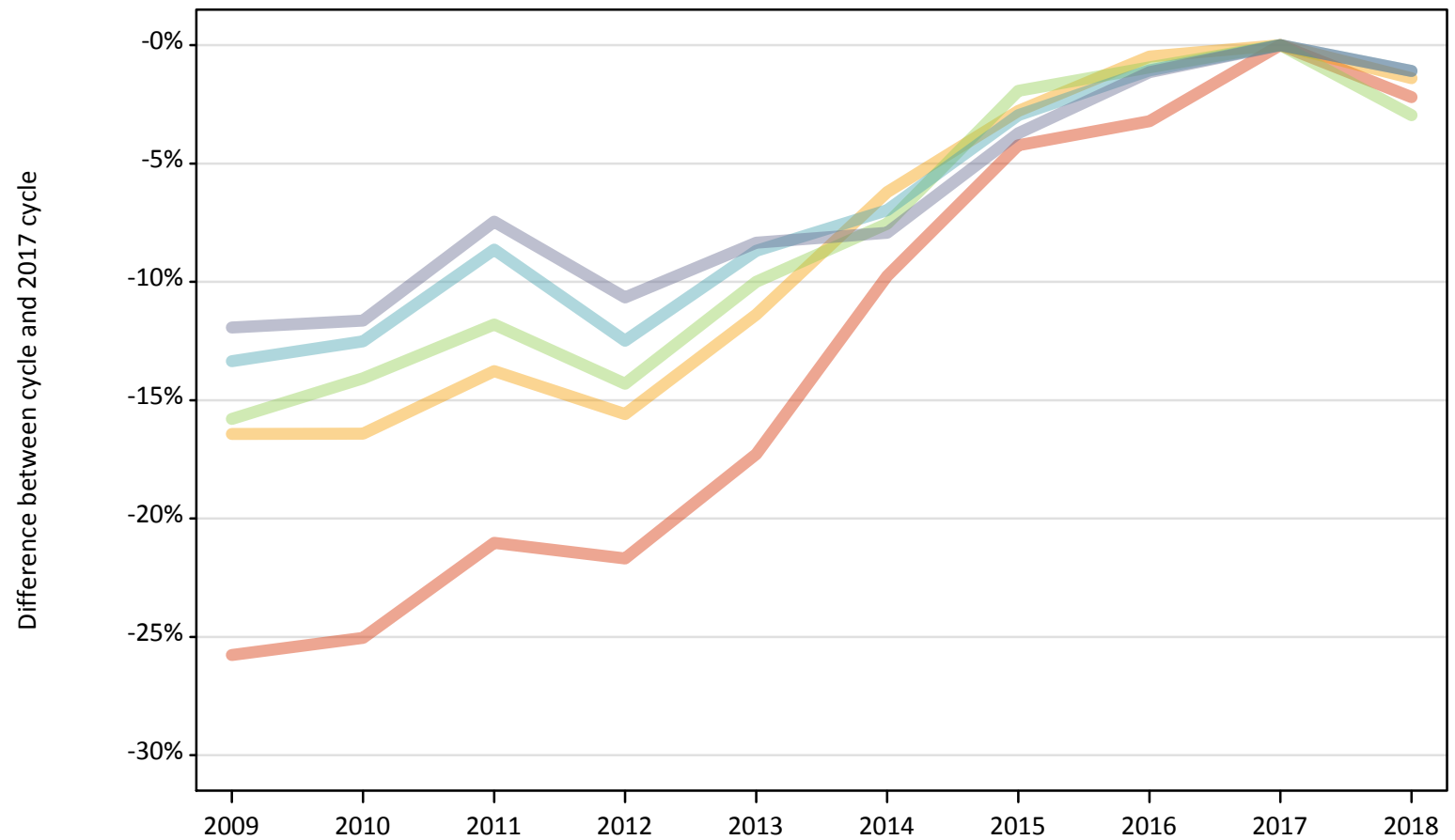
Daily Clearing Analysis: POLAR4

Analysis at 00:05 on Thursday 23 August 2018 (7 days after A level results day)

P.1 Placed 18 year old applicants from England by POLAR4 quintile: 7 days after A level results day

Placed 18 year old applicants: change relative to 2017 cycle totals

- Quintile 1
- Quintile 2
- Quintile 3
- Quintile 4
- Quintile 5



Note: The percentage change is not plotted in the above chart for groups with fewer than 30 placed applicants in any one cycle.

P.2 Placed 18 year old applicants from England by POLAR4 quintile: 7 days after A level results day

Applicant Status	POLAR4	2009	2010	2011	2012	2013	2014	2015	2016	2017	2018
Placed	Quintile 1	16,340	16,500	17,380	17,240	18,210	19,860	21,080	21,310	22,010	21,530
	Quintile 2	25,490	25,500	26,300	25,750	27,030	28,610	29,650	30,360	30,500	30,080
	Quintile 3	31,830	32,480	33,340	32,390	34,020	34,950	37,070	37,440	37,800	36,680
	Quintile 4	40,100	40,490	42,290	40,500	42,260	43,050	44,910	45,790	46,280	45,780
	Quintile 5	58,250	58,440	61,210	59,090	60,620	60,900	63,680	65,390	66,140	65,420

P.3 Placed 18 year old applicants from England by POLAR4 quintile: 7 days after A level results day

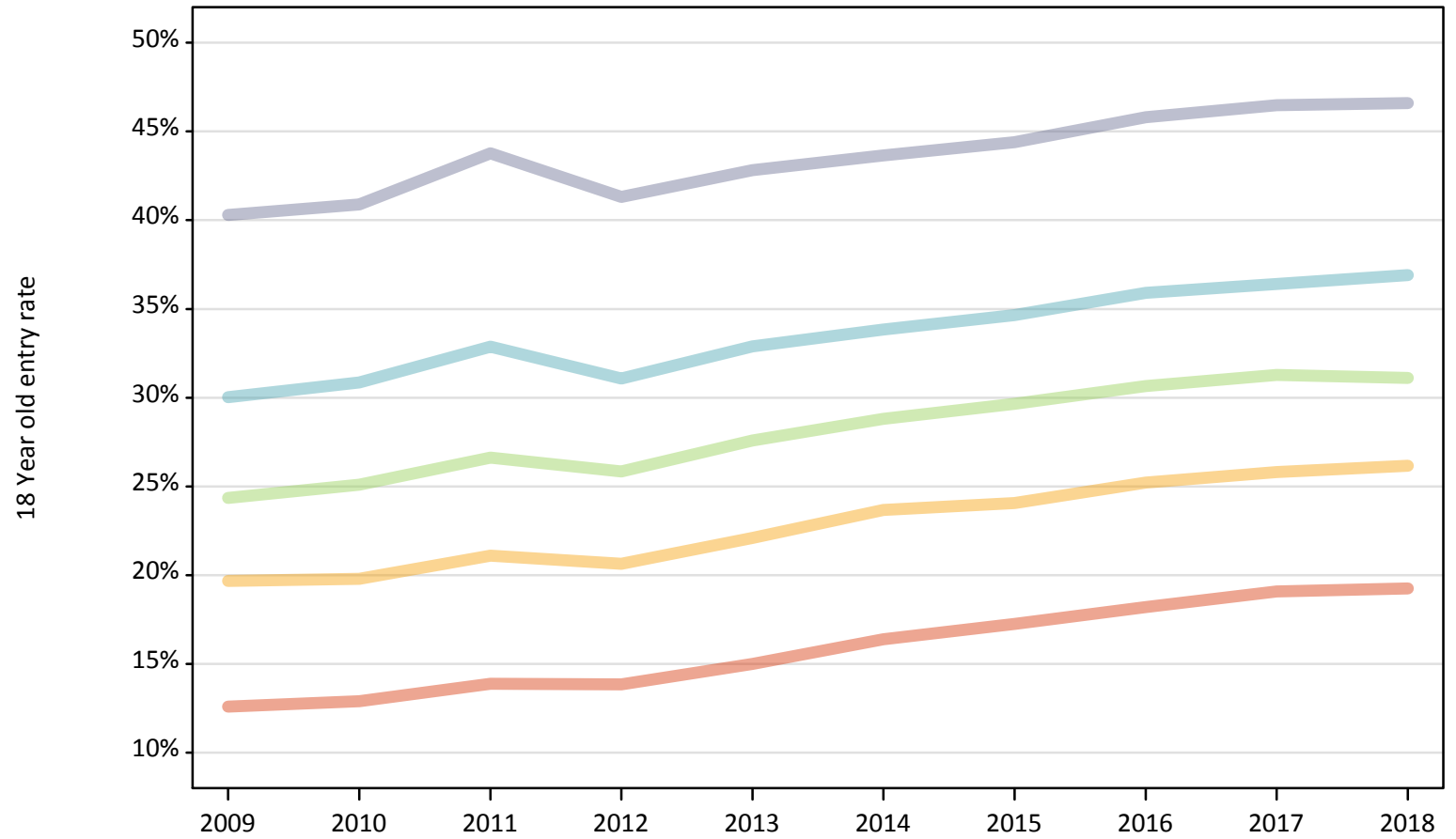
Placed 18 year old applicants: change relative to 2017 cycle totals

Applicant Status	POLAR4	2009	2010	2011	2012	2013	2014	2015	2016	2017	2018
Placed	Quintile 1	-26%	-25%	-21%	-22%	-17%	-10%	-4%	-3%	0%	-2%
	Quintile 2	-16%	-16%	-14%	-16%	-11%	-6%	-3%	-0%	0%	-1%
	Quintile 3	-16%	-14%	-12%	-14%	-10%	-8%	-2%	-1%	0%	-3%
	Quintile 4	-13%	-13%	-9%	-12%	-9%	-7%	-3%	-1%	0%	-1%
	Quintile 5	-12%	-12%	-7%	-11%	-8%	-8%	-4%	-1%	0%	-1%

Note: The percentage change is not recorded in the above table for groups with fewer than 10 placed applicants in that cycle or in the 2017 cycle.

P.4 Placed 18 year old applicants from England by POLAR4 quintile: 7 days after A level results day
Placed 18 year old applicants: entry rate

- Quintile 1
- Quintile 2
- Quintile 3
- Quintile 4
- Quintile 5



P.5 Placed 18 year old applicants from England by POLAR4 quintile: 7 days after A level results day

Placed 18 year old applicants: entry rate

Applicant Status	POLAR4	2009	2010	2011	2012	2013	2014	2015	2016	2017	2018
Placed	Quintile 1	12.6%	12.9%	13.9%	13.8%	15.0%	16.4%	17.3%	18.2%	19.1%	19.2%
	Quintile 2	19.7%	19.8%	21.1%	20.6%	22.1%	23.7%	24.1%	25.2%	25.8%	26.2%
	Quintile 3	24.4%	25.1%	26.6%	25.8%	27.6%	28.8%	29.7%	30.7%	31.3%	31.1%
	Quintile 4	30.0%	30.9%	32.9%	31.1%	32.9%	33.8%	34.7%	35.9%	36.4%	36.9%
	Quintile 5	40.3%	40.9%	43.8%	41.3%	42.8%	43.6%	44.4%	45.8%	46.5%	46.6%

P.6 Placed 18 year old applicants from England by POLAR4 quintile: 7 days after A level results day

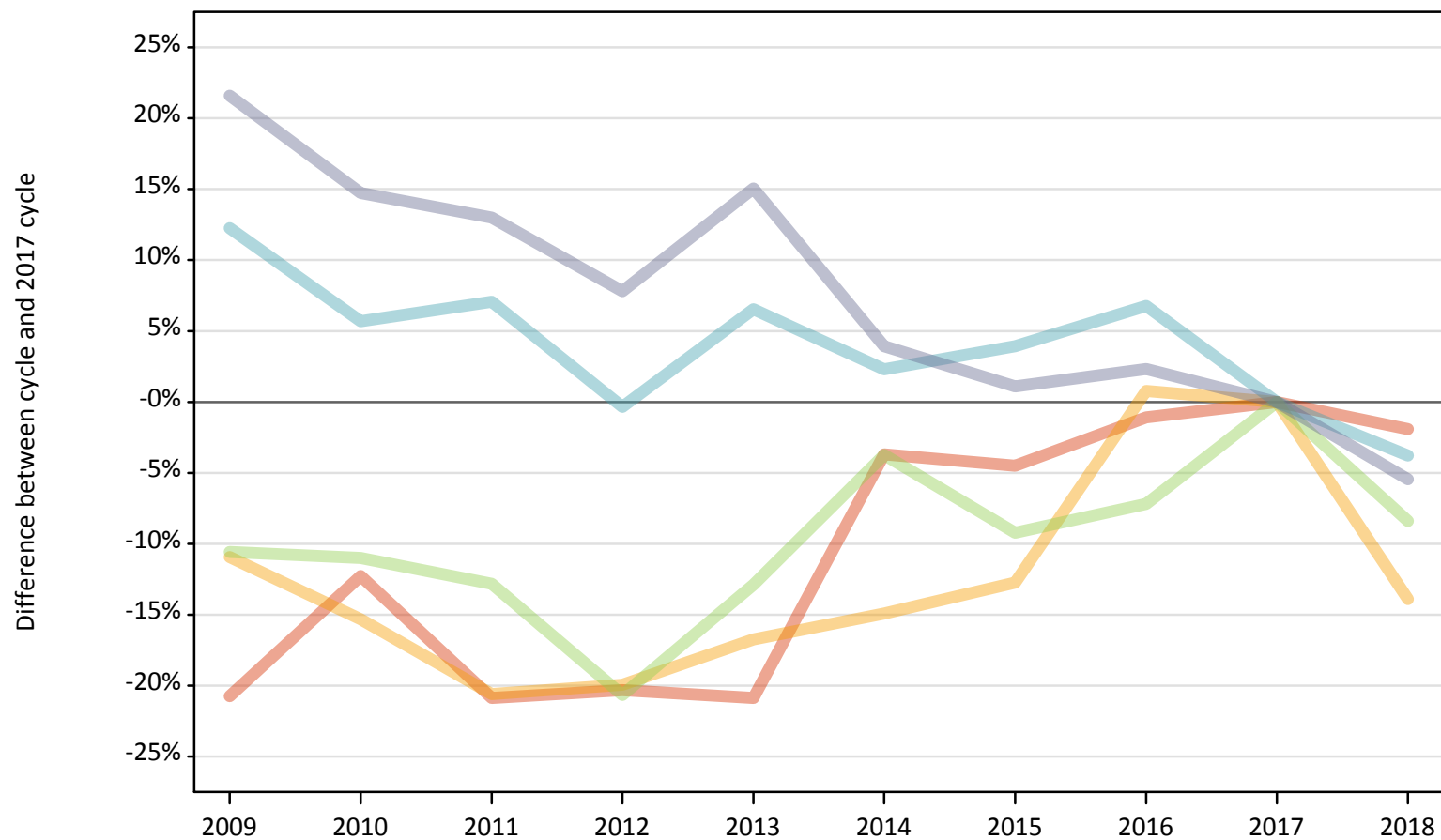
Placed 18 year old applicants: entry rate (indexed to 100 = Quintile 1)

Applicant Status	POLAR4	2009	2010	2011	2012	2013	2014	2015	2016	2017	2018
Placed	Quintile 1	100	100	100	100	100	100	100	100	100	100
	Quintile 2	156	153	152	149	147	144	139	139	135	136
	Quintile 3	193	195	192	187	184	176	172	168	164	162
	Quintile 4	239	239	237	224	219	206	201	197	191	192
	Quintile 5	320	317	315	298	286	266	257	252	244	242

P.7 Placed 18 year old applicants from Northern Ireland by POLAR4 quintile: 7 days after A level results day

Placed 18 year old applicants: change relative to 2017 cycle totals

- Quintile 1
- Quintile 2
- Quintile 3
- Quintile 4
- Quintile 5



Note: The percentage change is not plotted in the above chart for groups with fewer than 30 placed applicants in any one cycle.

P.8 Placed 18 year old applicants from Northern Ireland by POLAR4 quintile: 7 days after A level results day

Applicant Status	POLAR4	2009	2010	2011	2012	2013	2014	2015	2016	2017	2018
Placed	Quintile 1	580	640	580	580	580	710	700	730	730	720
	Quintile 2	690	660	620	620	650	660	680	780	780	670
	Quintile 3	1,270	1,260	1,240	1,130	1,240	1,370	1,290	1,320	1,420	1,300
	Quintile 4	2,250	2,120	2,150	2,000	2,140	2,050	2,090	2,140	2,010	1,930
	Quintile 5	3,970	3,750	3,690	3,520	3,760	3,390	3,300	3,340	3,260	3,090

P.9 Placed 18 year old applicants from Northern Ireland by POLAR4 quintile: 7 days after A level results day

Placed 18 year old applicants: change relative to 2017 cycle totals

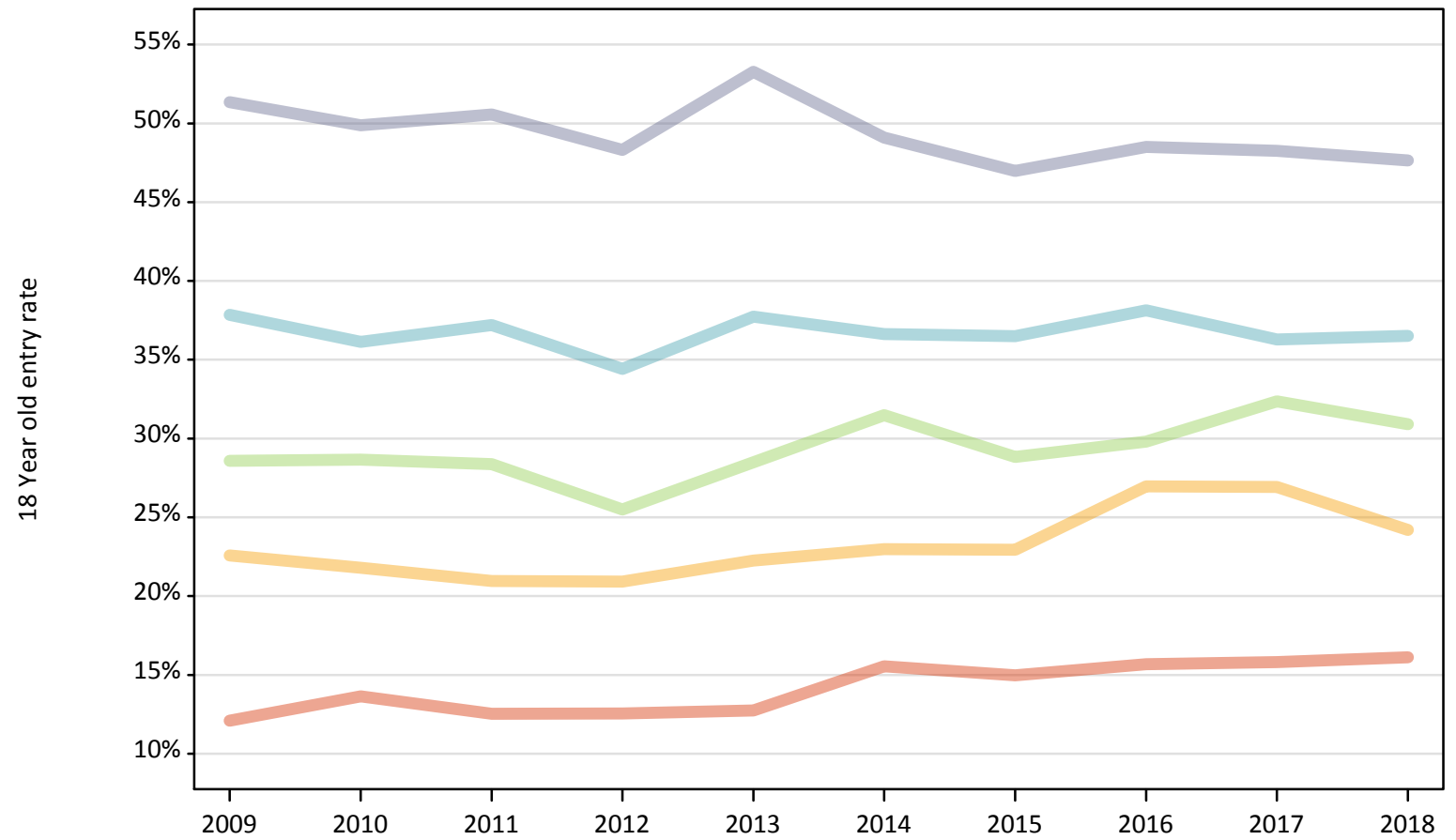
Applicant Status	POLAR4	2009	2010	2011	2012	2013	2014	2015	2016	2017	2018
Placed	Quintile 1	-21%	-12%	-21%	-20%	-21%	-4%	-5%	-1%	0%	-2%
	Quintile 2	-11%	-15%	-21%	-20%	-17%	-15%	-13%	1%	0%	-14%
	Quintile 3	-11%	-11%	-13%	-21%	-13%	-4%	-9%	-7%	0%	-8%
	Quintile 4	12%	6%	7%	-0%	7%	2%	4%	7%	0%	-4%
	Quintile 5	22%	15%	13%	8%	15%	4%	1%	2%	0%	-5%

Note: The percentage change is not recorded in the above table for groups with fewer than 10 placed applicants in that cycle or in the 2017 cycle.

P.10 Placed 18 year old applicants from Northern Ireland by POLAR4 quintile: 7 days after A level results day

Placed 18 year old applicants: entry rate

- Quintile 1
- Quintile 2
- Quintile 3
- Quintile 4
- Quintile 5



P.11 Placed 18 year old applicants from Northern Ireland by POLAR4 quintile: 7 days after A level results day

Placed 18 year old applicants: entry rate

Applicant Status	POLAR4	2009	2010	2011	2012	2013	2014	2015	2016	2017	2018
Placed	Quintile 1	12.1%	13.6%	12.5%	12.5%	12.7%	15.5%	15.0%	15.7%	15.8%	16.1%
	Quintile 2	22.6%	21.8%	21.0%	20.9%	22.3%	23.0%	22.9%	27.0%	26.9%	24.2%
	Quintile 3	28.6%	28.7%	28.4%	25.5%	28.5%	31.5%	28.8%	29.8%	32.4%	30.9%
	Quintile 4	37.9%	36.1%	37.2%	34.4%	37.7%	36.6%	36.5%	38.1%	36.3%	36.5%
	Quintile 5	51.3%	49.9%	50.6%	48.3%	53.3%	49.1%	47.0%	48.5%	48.3%	47.6%

P.12 Placed 18 year old applicants from Northern Ireland by POLAR4 quintile: 7 days after A level results day

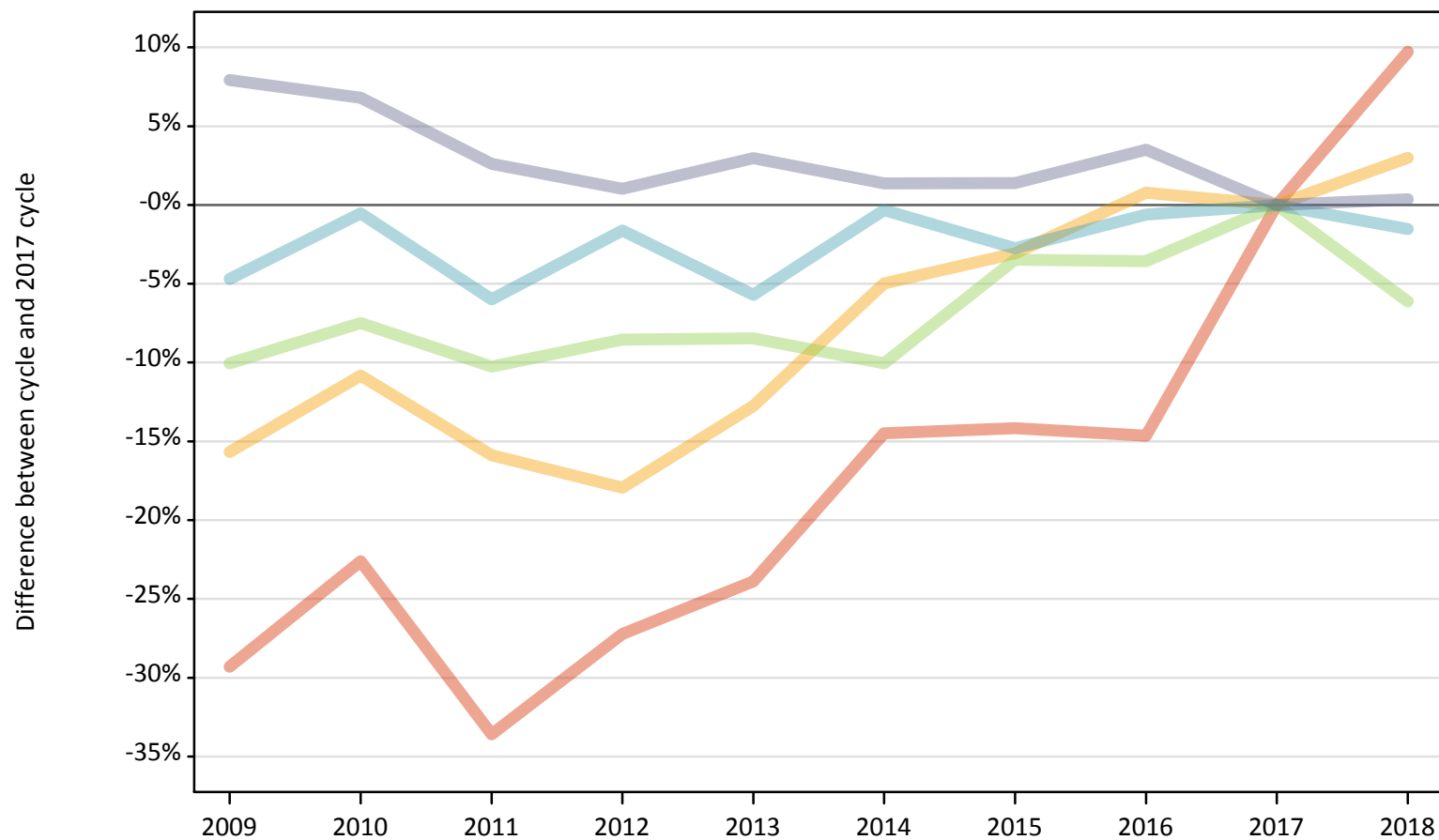
Placed 18 year old applicants: entry rate (indexed to 100 = Quintile 1)

Applicant Status	POLAR4	2009	2010	2011	2012	2013	2014	2015	2016	2017	2018
Placed	Quintile 1	100	100	100	100	100	100	100	100	100	100
	Quintile 2	187	160	167	167	175	148	153	172	170	150
	Quintile 3	237	210	226	203	224	202	192	190	205	192
	Quintile 4	313	265	297	274	296	236	244	243	230	227
	Quintile 5	425	365	404	385	418	316	314	309	305	296

P.13 Placed 18 year old applicants from Scotland by POLAR4 quintile: 7 days after A level results day

Placed 18 year old applicants: change relative to 2017 cycle totals

- Quintile 1
- Quintile 2
- Quintile 3
- Quintile 4
- Quintile 5



Note: The percentage change is not plotted in the above chart for groups with fewer than 30 placed applicants in any one cycle.

P.14 Placed 18 year old applicants from Scotland by POLAR4 quintile: 7 days after A level results day

Applicant Status	POLAR4	2009	2010	2011	2012	2013	2014	2015	2016	2017	2018
Placed	Quintile 1	440	490	420	460	480	540	540	540	630	690
	Quintile 2	1,180	1,250	1,180	1,150	1,230	1,330	1,360	1,420	1,400	1,450
	Quintile 3	2,150	2,210	2,140	2,180	2,190	2,150	2,300	2,300	2,390	2,240
	Quintile 4	3,230	3,370	3,190	3,330	3,200	3,380	3,300	3,370	3,390	3,340
	Quintile 5	7,290	7,210	6,930	6,820	6,950	6,850	6,850	6,990	6,750	6,780

P.15 Placed 18 year old applicants from Scotland by POLAR4 quintile: 7 days after A level results day

Placed 18 year old applicants: change relative to 2017 cycle totals

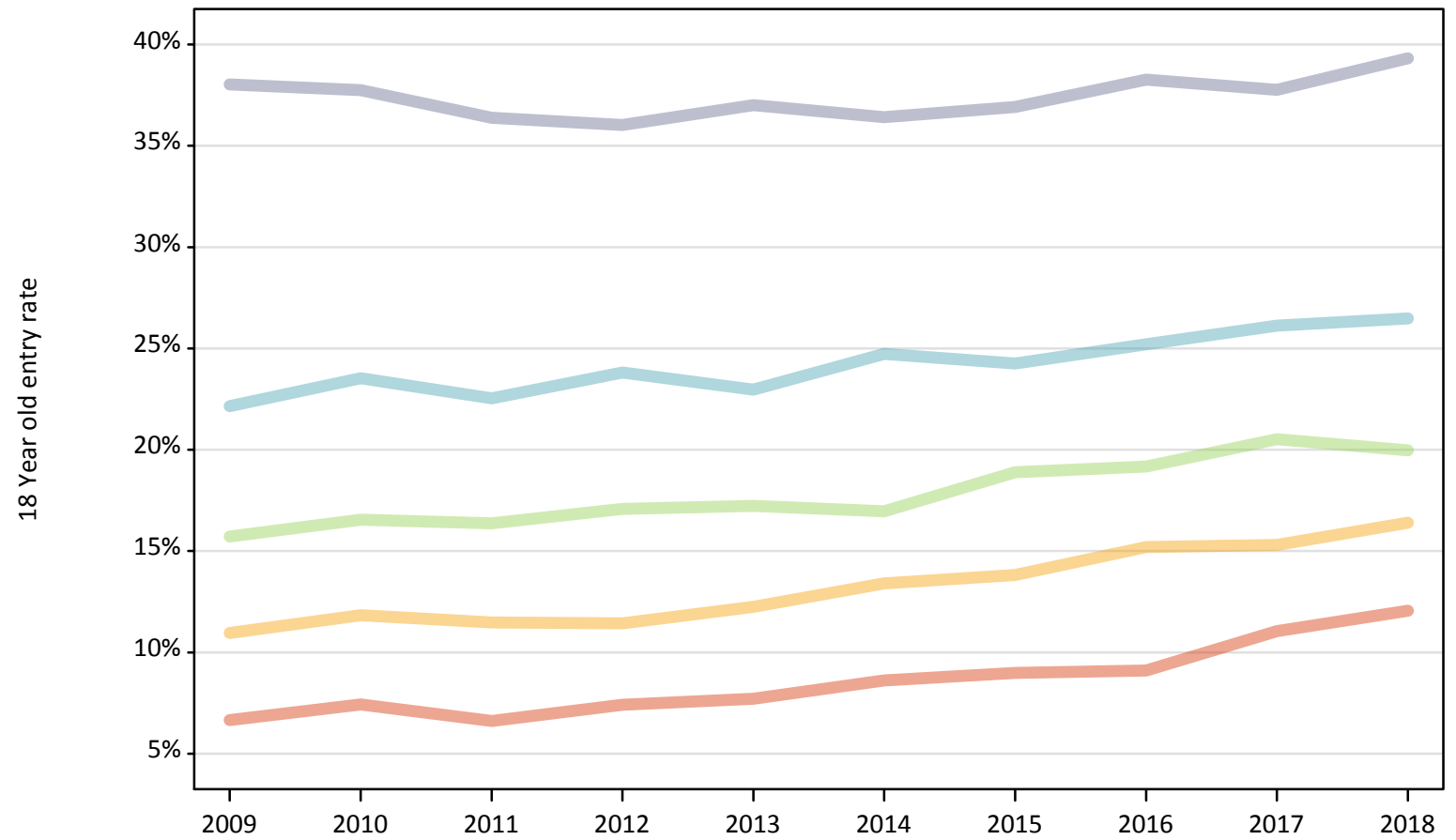
Applicant Status	POLAR4	2009	2010	2011	2012	2013	2014	2015	2016	2017	2018
Placed	Quintile 1	-29%	-23%	-34%	-27%	-24%	-14%	-14%	-15%	0%	10%
	Quintile 2	-16%	-11%	-16%	-18%	-13%	-5%	-3%	1%	0%	3%
	Quintile 3	-10%	-7%	-10%	-9%	-8%	-10%	-3%	-4%	0%	-6%
	Quintile 4	-5%	-1%	-6%	-2%	-6%	-0%	-3%	-1%	0%	-2%
	Quintile 5	8%	7%	3%	1%	3%	1%	1%	3%	0%	0%

Note: The percentage change is not recorded in the above table for groups with fewer than 10 placed applicants in that cycle or in the 2017 cycle.

P.16 Placed 18 year old applicants from Scotland by POLAR4 quintile: 7 days after A level results day

Placed 18 year old applicants: entry rate

- Quintile 1
- Quintile 2
- Quintile 3
- Quintile 4
- Quintile 5



P.17 Placed 18 year old applicants from Scotland by POLAR4 quintile: 7 days after A level results day

Placed 18 year old applicants: entry rate

Applicant Status	POLAR4	2009	2010	2011	2012	2013	2014	2015	2016	2017	2018
Placed	Quintile 1	6.7%	7.4%	6.6%	7.4%	7.7%	8.6%	9.0%	9.1%	11.0%	12.1%
	Quintile 2	11.0%	11.8%	11.5%	11.4%	12.2%	13.4%	13.8%	15.2%	15.3%	16.4%
	Quintile 3	15.7%	16.5%	16.4%	17.1%	17.2%	17.0%	18.9%	19.2%	20.5%	20.0%
	Quintile 4	22.2%	23.5%	22.5%	23.8%	23.0%	24.7%	24.3%	25.2%	26.1%	26.5%
	Quintile 5	38.0%	37.7%	36.4%	36.0%	37.0%	36.4%	36.9%	38.3%	37.8%	39.3%

P.18 Placed 18 year old applicants from Scotland by POLAR4 quintile: 7 days after A level results day

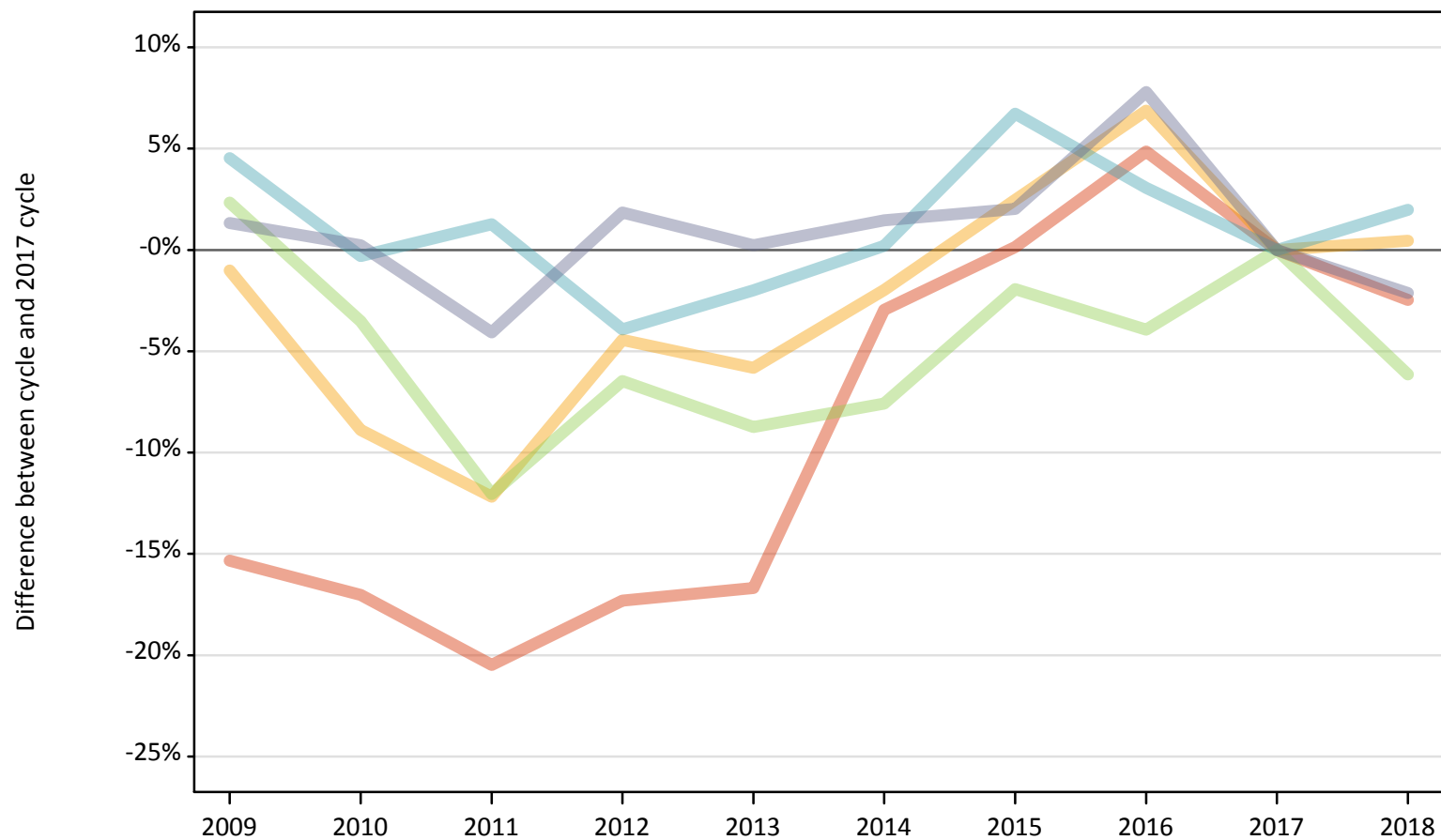
Placed 18 year old applicants: entry rate (indexed to 100 = Quintile 1)

Applicant Status	POLAR4	2009	2010	2011	2012	2013	2014	2015	2016	2017	2018
Placed	Quintile 1	100	100	100	100	100	100	100	100	100	100
	Quintile 2	165	159	174	154	159	156	154	167	139	136
	Quintile 3	236	223	247	230	224	197	210	211	186	166
	Quintile 4	333	317	341	321	298	287	270	277	237	220
	Quintile 5	572	508	550	486	480	422	411	421	342	326

P.19 Placed 18 year old applicants from Wales by POLAR4 quintile: 7 days after A level results day

Placed 18 year old applicants: change relative to 2017 cycle totals

- Quintile 1
- Quintile 2
- Quintile 3
- Quintile 4
- Quintile 5



Note: The percentage change is not plotted in the above chart for groups with fewer than 30 placed applicants in any one cycle.

P.20 Placed 18 year old applicants from Wales by POLAR4 quintile: 7 days after A level results day

Applicant Status	POLAR4	2009	2010	2011	2012	2013	2014	2015	2016	2017	2018
Placed	Quintile 1	1,200	1,180	1,130	1,180	1,180	1,380	1,420	1,490	1,420	1,390
	Quintile 2	2,160	1,990	1,920	2,090	2,060	2,140	2,240	2,330	2,180	2,190
	Quintile 3	2,500	2,350	2,150	2,280	2,230	2,260	2,390	2,340	2,440	2,290
	Quintile 4	2,050	1,960	1,990	1,890	1,920	1,970	2,090	2,020	1,960	2,000
	Quintile 5	2,140	2,120	2,030	2,160	2,120	2,150	2,160	2,280	2,120	2,070

P.21 Placed 18 year old applicants from Wales by POLAR4 quintile: 7 days after A level results day

Placed 18 year old applicants: change relative to 2017 cycle totals

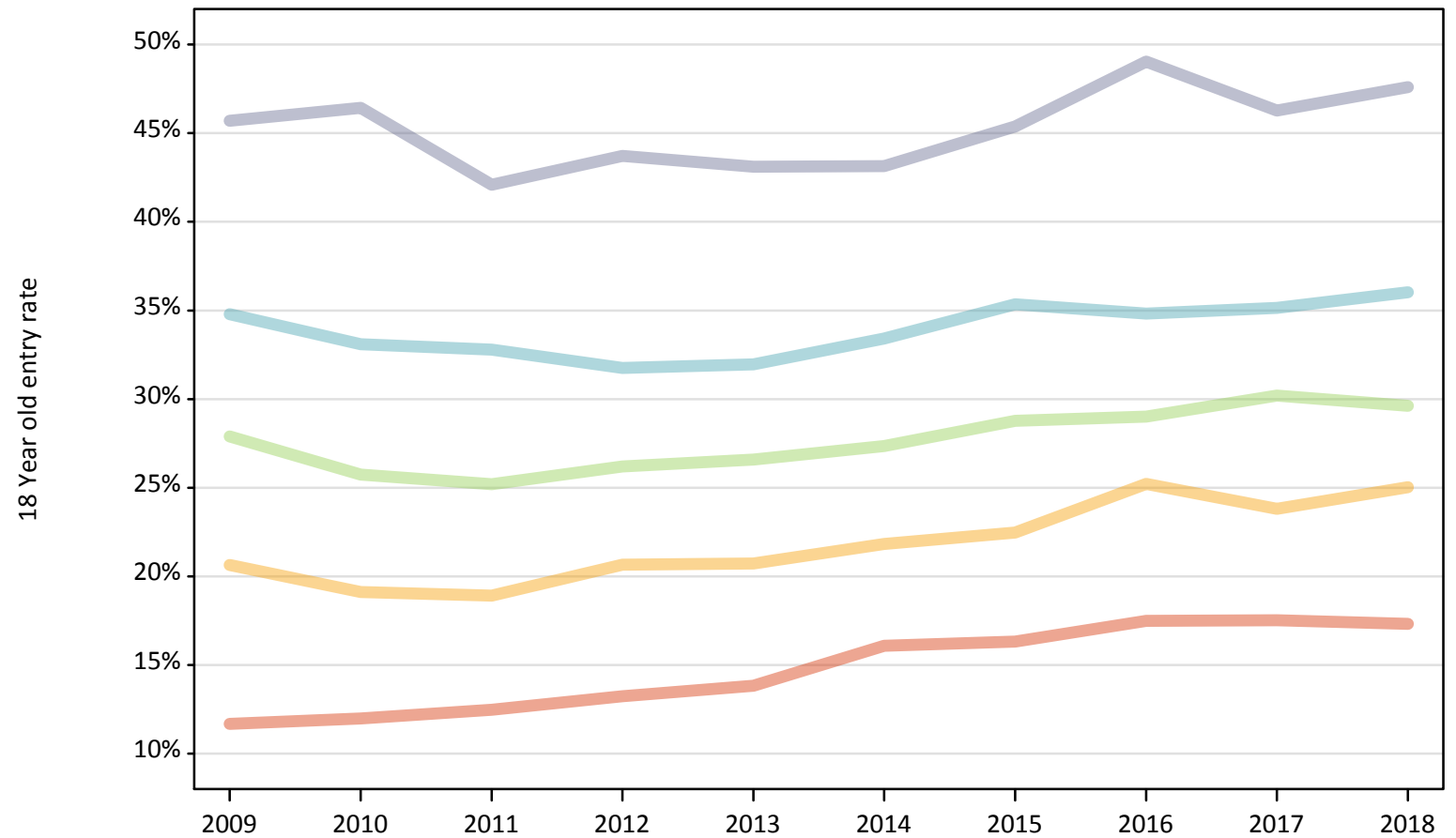
Applicant Status	POLAR4	2009	2010	2011	2012	2013	2014	2015	2016	2017	2018
Placed	Quintile 1	-15%	-17%	-20%	-17%	-17%	-3%	0%	5%	0%	-2%
	Quintile 2	-1%	-9%	-12%	-4%	-6%	-2%	2%	7%	0%	0%
	Quintile 3	2%	-4%	-12%	-6%	-9%	-8%	-2%	-4%	0%	-6%
	Quintile 4	5%	-0%	1%	-4%	-2%	0%	7%	3%	0%	2%
	Quintile 5	1%	0%	-4%	2%	0%	1%	2%	8%	0%	-2%

Note: The percentage change is not recorded in the above table for groups with fewer than 10 placed applicants in that cycle or in the 2017 cycle.

P.22 Placed 18 year old applicants from Wales by POLAR4 quintile: 7 days after A level results day

Placed 18 year old applicants: entry rate

- Quintile 1
- Quintile 2
- Quintile 3
- Quintile 4
- Quintile 5



P.23 Placed 18 year old applicants from Wales by POLAR4 quintile: 7 days after A level results day

Placed 18 year old applicants: entry rate

Applicant Status	POLAR4	2009	2010	2011	2012	2013	2014	2015	2016	2017	2018
Placed	Quintile 1	11.7%	12.0%	12.5%	13.2%	13.8%	16.1%	16.3%	17.5%	17.5%	17.3%
	Quintile 2	20.6%	19.1%	18.9%	20.7%	20.7%	21.8%	22.5%	25.2%	23.8%	25.0%
	Quintile 3	27.9%	25.7%	25.2%	26.2%	26.6%	27.3%	28.8%	29.0%	30.2%	29.6%
	Quintile 4	34.8%	33.1%	32.8%	31.7%	32.0%	33.4%	35.3%	34.8%	35.1%	36.0%
	Quintile 5	45.7%	46.4%	42.1%	43.7%	43.1%	43.1%	45.4%	49.0%	46.3%	47.6%

P.24 Placed 18 year old applicants from Wales by POLAR4 quintile: 7 days after A level results day

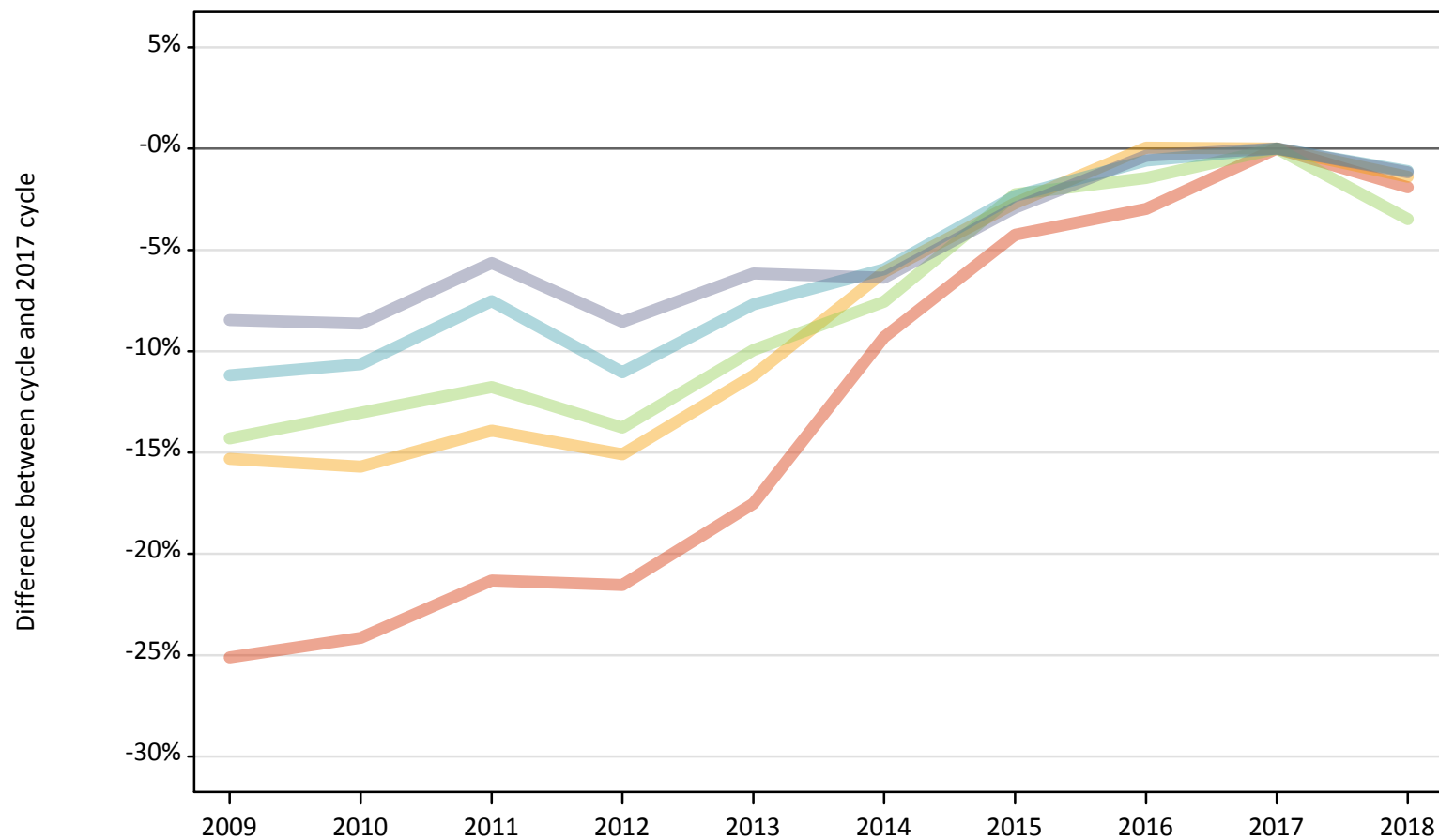
Placed 18 year old applicants: entry rate (indexed to 100 = Quintile 1)

Applicant Status	POLAR4	2009	2010	2011	2012	2013	2014	2015	2016	2017	2018
Placed	Quintile 1	100	100	100	100	100	100	100	100	100	100
	Quintile 2	177	159	152	156	150	136	138	144	136	144
	Quintile 3	239	215	202	198	192	170	176	166	172	171
	Quintile 4	298	276	263	240	231	208	217	199	201	208
	Quintile 5	391	387	337	330	312	268	278	280	264	275

P.25 Placed 18 year old applicants from the UK by POLAR4 quintile: 7 days after A level results day

Placed 18 year old applicants: change relative to 2017 cycle totals

- Quintile 1
- Quintile 2
- Quintile 3
- Quintile 4
- Quintile 5



Note: The percentage change is not plotted in the above chart for groups with fewer than 30 placed applicants in any one cycle.

P.26 Placed 18 year old applicants from the UK by POLAR4 quintile: 7 days after A level results day

Applicant Status	POLAR4	2009	2010	2011	2012	2013	2014	2015	2016	2017	2018
Placed	Quintile 1	18,570	18,810	19,510	19,450	20,450	22,490	23,740	24,060	24,790	24,320
	Quintile 2	29,530	29,400	30,020	29,610	30,960	32,750	33,930	34,890	34,870	34,390
	Quintile 3	37,740	38,300	38,860	37,980	39,670	40,720	43,050	43,410	44,040	42,510
	Quintile 4	47,640	47,940	49,610	47,720	49,520	50,450	52,390	53,320	53,640	53,050
	Quintile 5	71,650	71,520	73,850	71,590	73,450	73,290	75,990	78,000	78,270	77,360

P.27 Placed 18 year old applicants from the UK by POLAR4 quintile: 7 days after A level results day

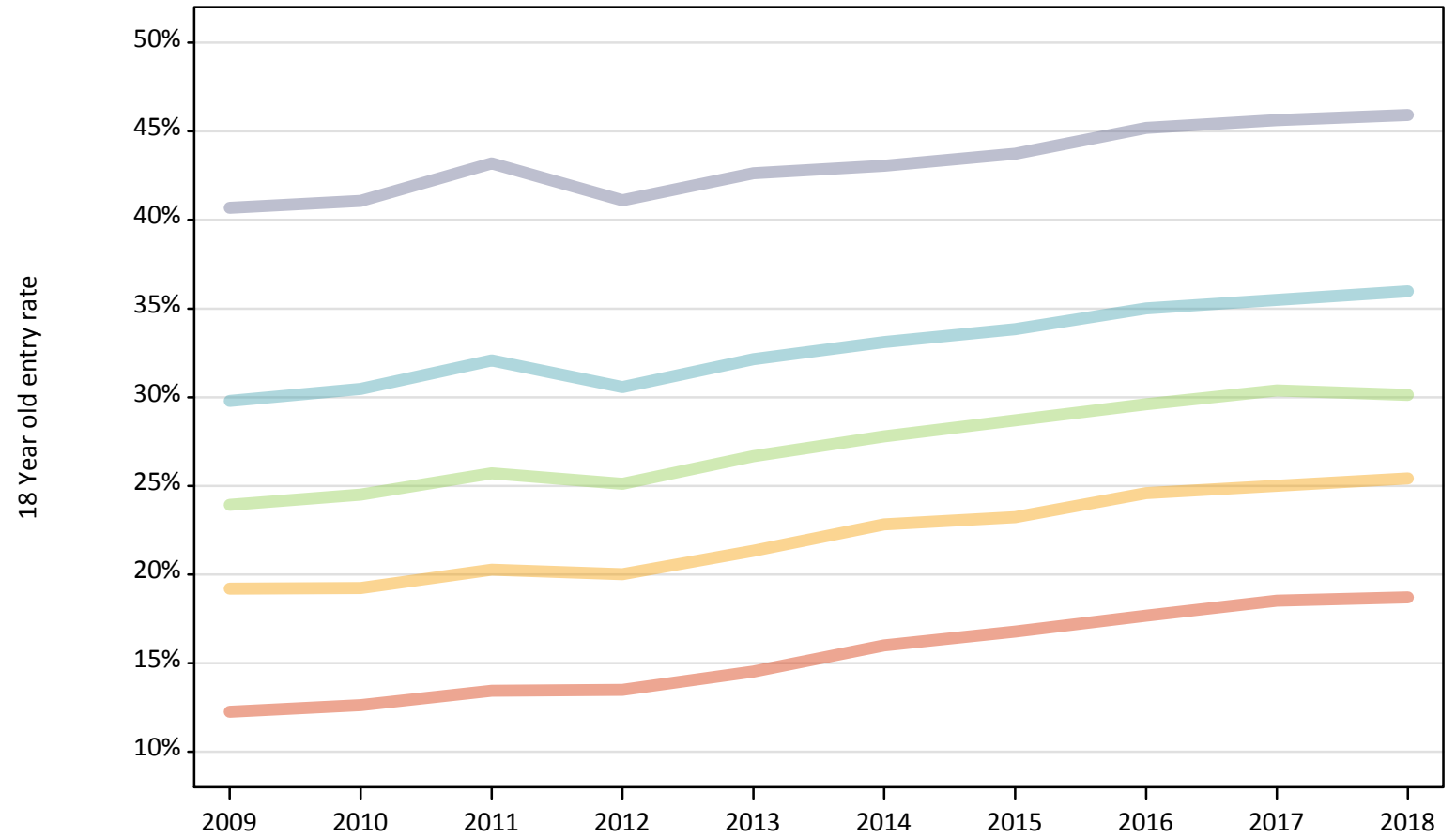
Placed 18 year old applicants: change relative to 2017 cycle totals

Applicant Status	POLAR4	2009	2010	2011	2012	2013	2014	2015	2016	2017	2018
Placed	Quintile 1	-25%	-24%	-21%	-22%	-18%	-9%	-4%	-3%	0%	-2%
	Quintile 2	-15%	-16%	-14%	-15%	-11%	-6%	-3%	0%	0%	-1%
	Quintile 3	-14%	-13%	-12%	-14%	-10%	-8%	-2%	-1%	0%	-3%
	Quintile 4	-11%	-11%	-8%	-11%	-8%	-6%	-2%	-1%	0%	-1%
	Quintile 5	-8%	-9%	-6%	-9%	-6%	-6%	-3%	-0%	0%	-1%

Note: The percentage change is not recorded in the above table for groups with fewer than 10 placed applicants in that cycle or in the 2017 cycle.

P.28 Placed 18 year old applicants from the UK by POLAR4 quintile: 7 days after A level results day
Placed 18 year old applicants: entry rate

- Quintile 1
- Quintile 2
- Quintile 3
- Quintile 4
- Quintile 5



P.29 Placed 18 year old applicants from the UK by POLAR4 quintile: 7 days after A level results day

Placed 18 year old applicants: entry rate

Applicant Status	POLAR4	2009	2010	2011	2012	2013	2014	2015	2016	2017	2018
Placed	Quintile 1	12.3%	12.6%	13.4%	13.5%	14.5%	16.0%	16.8%	17.7%	18.5%	18.7%
	Quintile 2	19.2%	19.2%	20.3%	20.0%	21.3%	22.8%	23.2%	24.6%	25.0%	25.4%
	Quintile 3	23.9%	24.5%	25.7%	25.1%	26.7%	27.8%	28.7%	29.6%	30.4%	30.1%
	Quintile 4	29.8%	30.5%	32.1%	30.6%	32.1%	33.1%	33.8%	35.0%	35.5%	36.0%
	Quintile 5	40.7%	41.1%	43.2%	41.1%	42.6%	43.1%	43.7%	45.2%	45.6%	45.9%

P.30 Placed 18 year old applicants from the UK by POLAR4 quintile: 7 days after A level results day

Placed 18 year old applicants: entry rate (indexed to 100 = Quintile 1)

Applicant Status	POLAR4	2009	2010	2011	2012	2013	2014	2015	2016	2017	2018
Placed	Quintile 1	100	100	100	100	100	100	100	100	100	100
	Quintile 2	157	152	151	148	147	143	139	139	135	136
	Quintile 3	195	194	191	186	184	174	171	167	164	161
	Quintile 4	243	241	239	227	221	207	202	198	192	192
	Quintile 5	332	325	321	305	293	269	261	256	246	246