

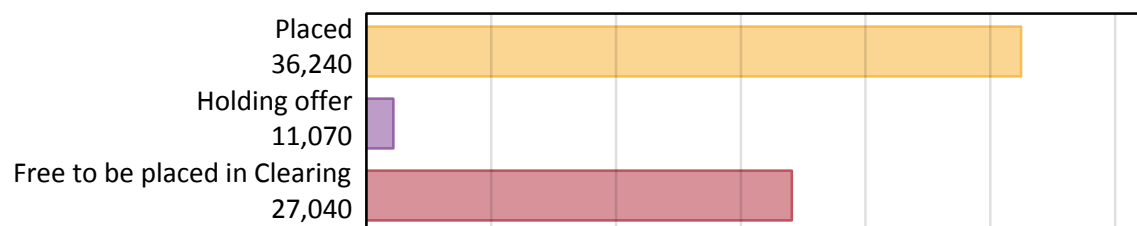
Daily Clearing Analysis: Overview

Analysis at 00:05 on Friday 24 August 2018 (8 days after A level results day)

A.1 Applicants by type and status from outside the EU, 2018 cycle

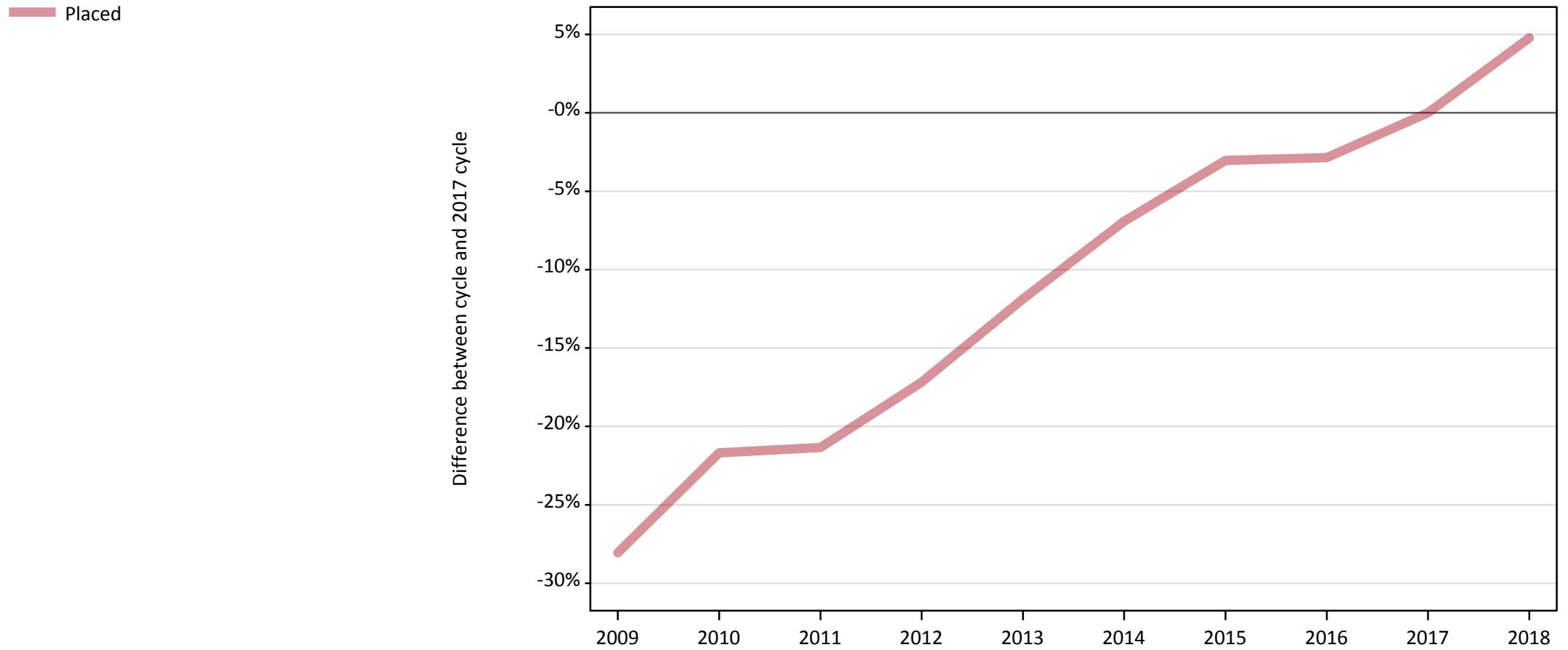
Applicant type	Status	2018
Main scheme	Placed (Clearing)	2,840
	Placed (Adjustment)	50
	Placed (Firm)	27,220
	Placed (Insurance)	3,720
	Placed (Other)	1,860
	Holding offer	11,070
	Free to be placed in Clearing	27,040
Direct to Clearing	Placed (Direct to Clearing)	560
	Other (Direct to Clearing)	730
All applicants	Placed	36,240

A.2 Summary of applicants who are placed, holding offers or free to be placed in Clearing (outside the EU)



A.3 All placed applicants from outside the EU: 8 days after A level results day

All placed applicants: difference between cycle and 2017 cycle



Note: The percentage change is not plotted in the above chart for groups with fewer than 30 placed applicants in any one cycle.

A.4 All placed applicants from outside the EU: 8 days after A level results day

All placed applicants: applicants at 8 days after A level results day

Applicant type	Status	2009	2010	2011	2012	2013	2014	2015	2016	2017	2018
All applicants	Placed	24,880	27,080	27,200	28,640	30,480	32,190	33,530	33,590	34,580	36,240

A.5 All placed applicants from outside the EU: 8 days after A level results day

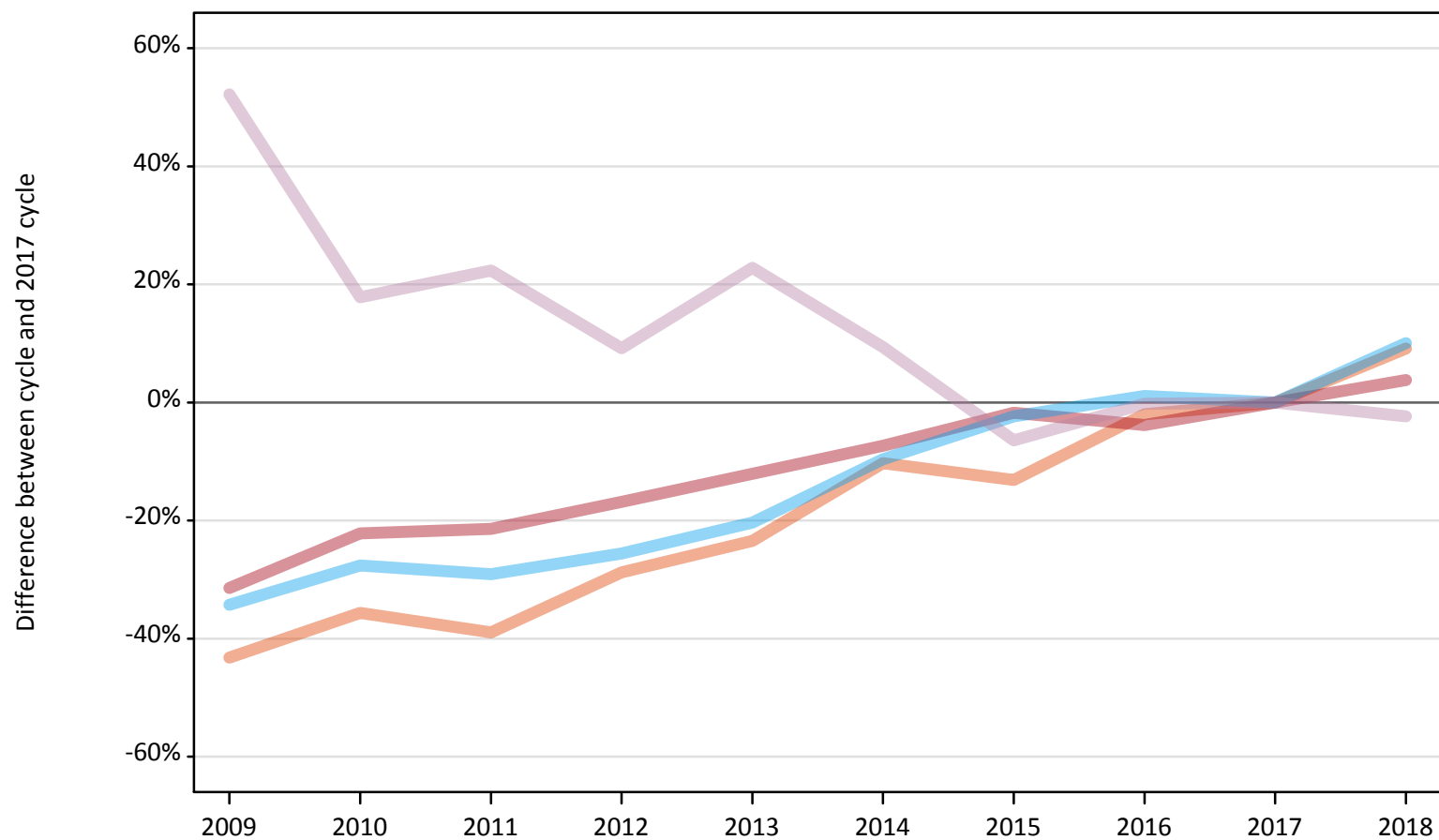
All placed applicants: difference between cycle and 2017 cycle

Applicant type	Status	2009	2010	2011	2012	2013	2014	2015	2016	2017	2018
All applicants	Placed	-28%	-22%	-21%	-17%	-12%	-7%	-3%	-3%	0%	5%

Note: The percentage change is not recorded in the above table for groups with fewer than 10 placed applicants in that cycle or in the 2017 cycle.

A.6 Placed main scheme applicants from outside the EU: 8 days after A level results day
All Main scheme placed routes (excluding Adjustment): difference between cycle and 2017 cycle

- Placed (Clearing)
- Placed (Firm)
- Placed (Insurance)
- Placed (Other)



Note: The percentage change is not plotted in the above chart for groups with fewer than 30 placed applicants in any one cycle.

A.7 Placed main scheme applicants from outside the EU: 8 days after A level results day

All Main scheme placed routes (excluding Adjustment): applicants at 8 days after A level results day

Applicant type	Status	2009	2010	2011	2012	2013	2014	2015	2016	2017	2018
Main scheme	Placed (Clearing)	1,480	1,680	1,590	1,850	1,990	2,340	2,260	2,550	2,600	2,840
	Placed (Firm)	17,990	20,410	20,620	21,810	23,050	24,300	25,760	25,220	26,230	27,220
	Placed (Insurance)	2,220	2,450	2,400	2,510	2,690	3,050	3,300	3,420	3,380	3,720
	Placed (Other)	2,900	2,240	2,330	2,080	2,340	2,080	1,780	1,900	1,900	1,860

A.8 Placed main scheme applicants from outside the EU: 8 days after A level results day

All Main scheme placed routes (excluding Adjustment): difference between cycle and 2017 cycle

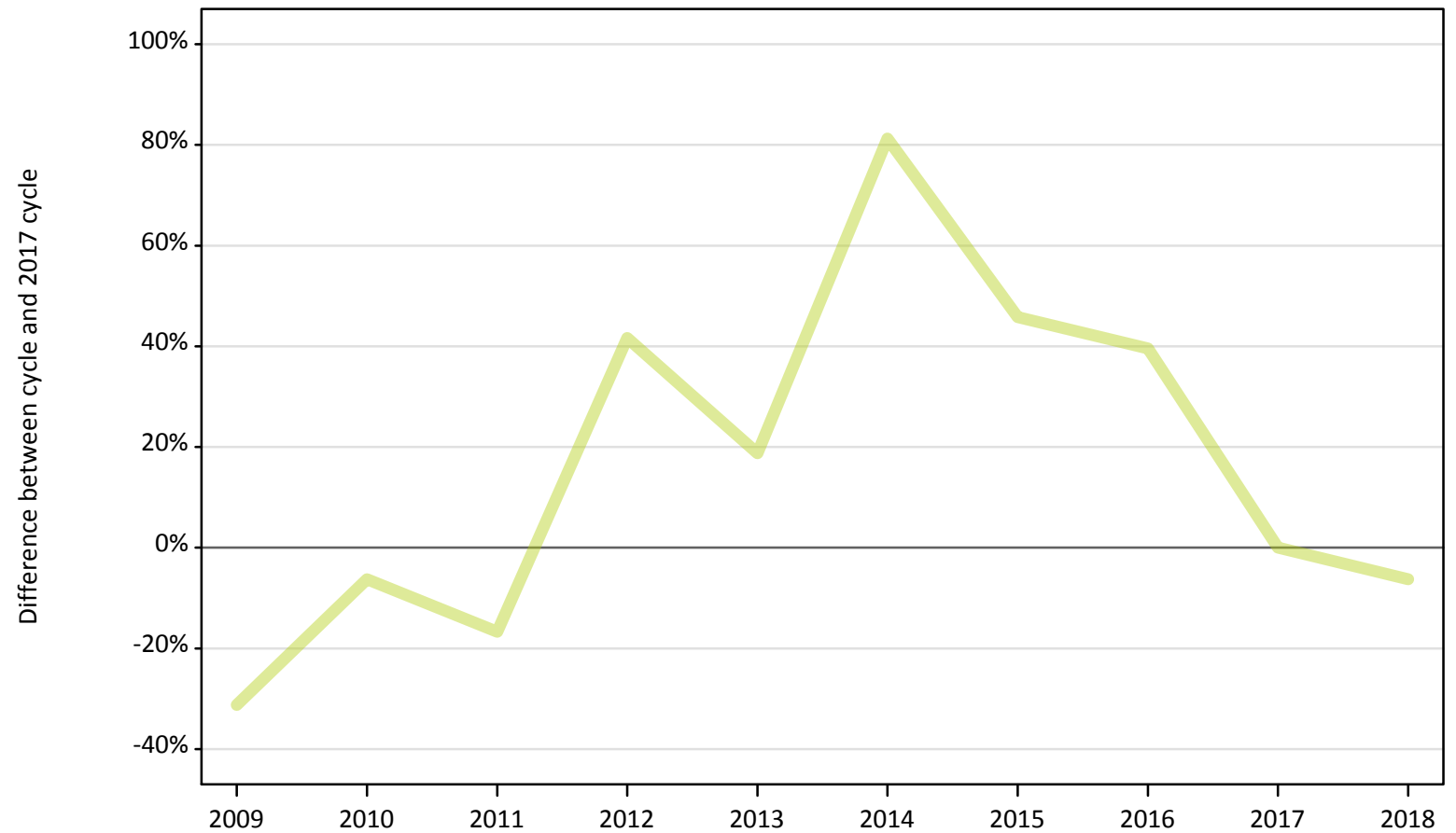
Applicant type	Status	2009	2010	2011	2012	2013	2014	2015	2016	2017	2018
Main scheme	Placed (Clearing)	-43%	-36%	-39%	-29%	-23%	-10%	-13%	-2%	0%	9%
	Placed (Firm)	-31%	-22%	-21%	-17%	-12%	-7%	-2%	-4%	0%	4%
	Placed (Insurance)	-34%	-28%	-29%	-26%	-20%	-10%	-2%	1%	0%	10%
	Placed (Other)	52%	18%	22%	9%	23%	9%	-6%	-0%	0%	-2%

Note: The percentage change is not recorded in the above table for groups with fewer than 10 placed applicants in that cycle or in the 2017 cycle.

A.9 Main scheme applicants placed through adjustment: 8 days after A level results day

Placed through adjustment: difference between cycle and 2017 cycle

Placed (Adjustment)



Note: The percentage change is not plotted in the above chart for groups with fewer than 30 placed applicants in any one cycle.

A.10 Main scheme applicants placed through adjustment: 8 days after A level results day

Placed through adjustment: applicants at 8 days after A level results day

Applicant type	Status	2009	2010	2011	2012	2013	2014	2015	2016	2017	2018
Main scheme	Placed (Adjustment)	30	50	40	70	60	90	70	70	50	50

A.11 Main scheme applicants placed through adjustment: 8 days after A level results day

Placed through adjustment: difference between cycle and 2017 cycle

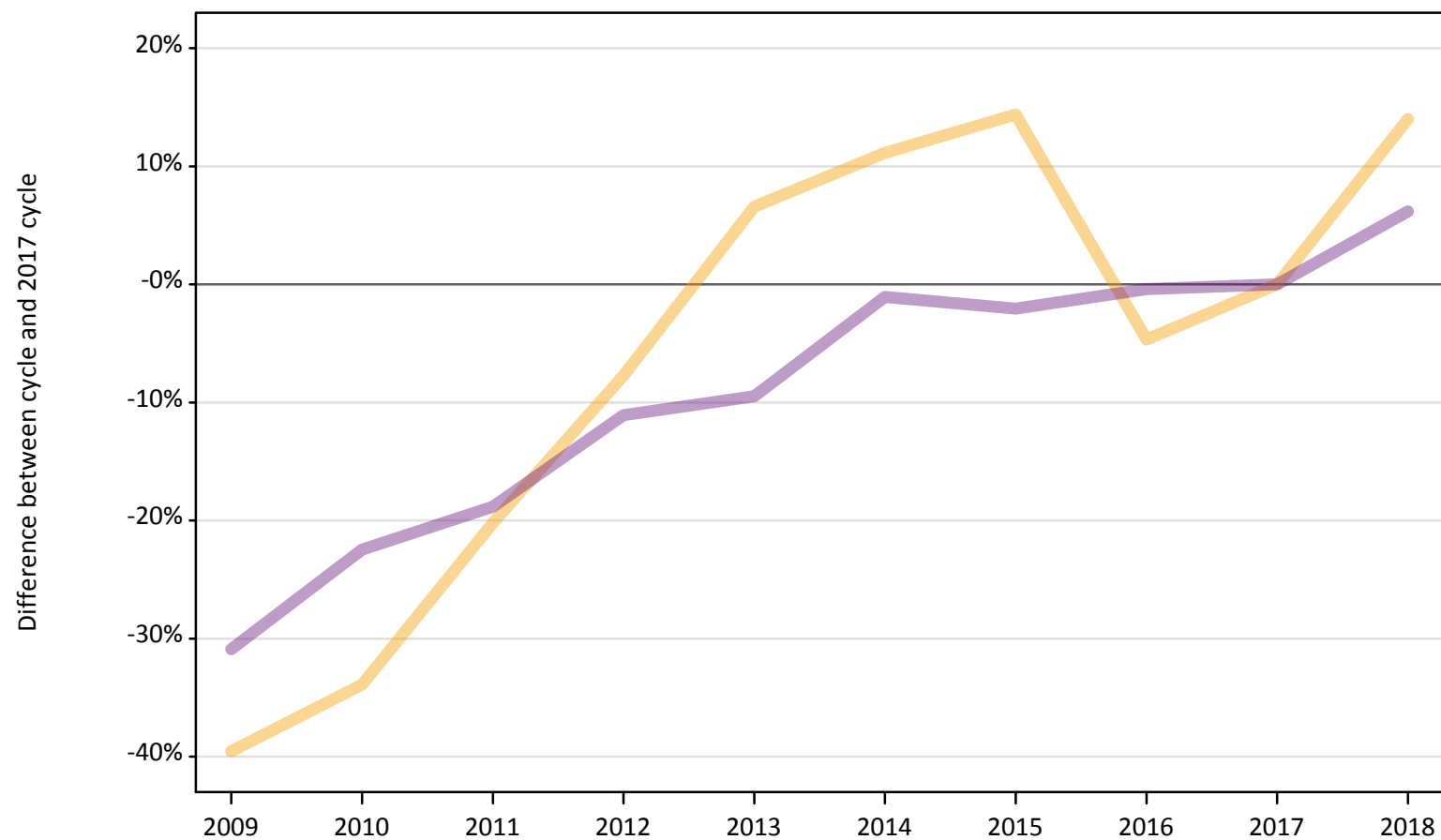
Applicant type	Status	2009	2010	2011	2012	2013	2014	2015	2016	2017	2018
Main scheme	Placed (Adjustment)	-31%	-6%	-17%	42%	19%	81%	46%	40%	0%	-6%

Note: The percentage change is not recorded in the above table for groups with fewer than 10 placed applicants in that cycle or in the 2017 cycle.

A.12 Main scheme applicants not currently placed from outside the EU: 8 days after A level results day

Applicants in unplaced states: difference between cycle and 2017 cycle

— Holding offer
— Free to be placed in Clearing



Note: The percentage change is not plotted in the above chart for groups with fewer than 30 unplaced applicants in any one cycle.

A.13 Main scheme applicants not currently placed from outside the EU: 8 days after A level results day

Applicants in unplaced states: applicants at 8 days after A level results day

Applicant type	Status	2009	2010	2011	2012	2013	2014	2015	2016	2017	2018
Main scheme	Holding offer	5,870	6,420	7,750	8,960	10,350	10,790	11,110	9,260	9,710	11,070
	Free to be placed in Clearing	17,600	19,740	20,670	22,650	23,050	25,190	24,950	25,360	25,470	27,040

A.14 Main scheme applicants not currently placed from outside the EU: 8 days after A level results day

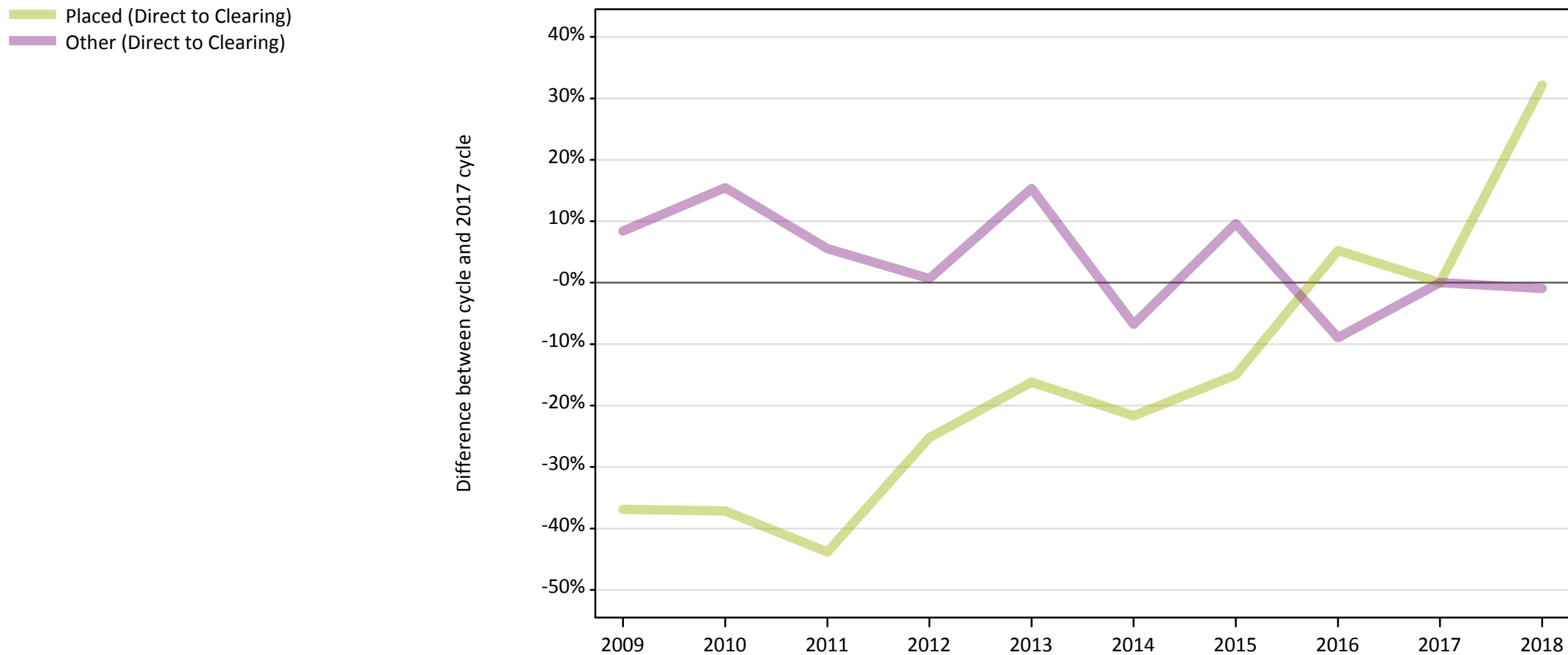
Applicants in unplaced states: difference between cycle and 2017 cycle

Applicant type	Status	2009	2010	2011	2012	2013	2014	2015	2016	2017	2018
Main scheme	Holding offer	-40%	-34%	-20%	-8%	7%	11%	14%	-5%	0%	14%
	Free to be placed in Clearing	-31%	-22%	-19%	-11%	-9%	-1%	-2%	-0%	0%	6%

Note: The percentage change is not recorded in the above table for groups with fewer than 10 unplaced applicants in that cycle or in the 2017 cycle.

A.15 Direct to Clearing applicants from outside the EU: 8 days after A level results day

Direct to Clearing: difference between cycle and 2017 cycle



Note: The percentage change is not plotted in the above chart for groups with fewer than 30 placed applicants in any one cycle.

A.16 Direct to Clearing applicants from outside the EU: 8 days after A level results day

Direct to Clearing 8 days after A level results day

Applicant type	Status	2009	2010	2011	2012	2013	2014	2015	2016	2017	2018
Direct to Clearing	Placed (Direct to Clearing)	270	260	240	310	350	330	360	440	420	560
	Other (Direct to Clearing)	800	850	780	740	850	690	810	670	740	730

A.17 Direct to Clearing applicants from outside the EU: 8 days after A level results day

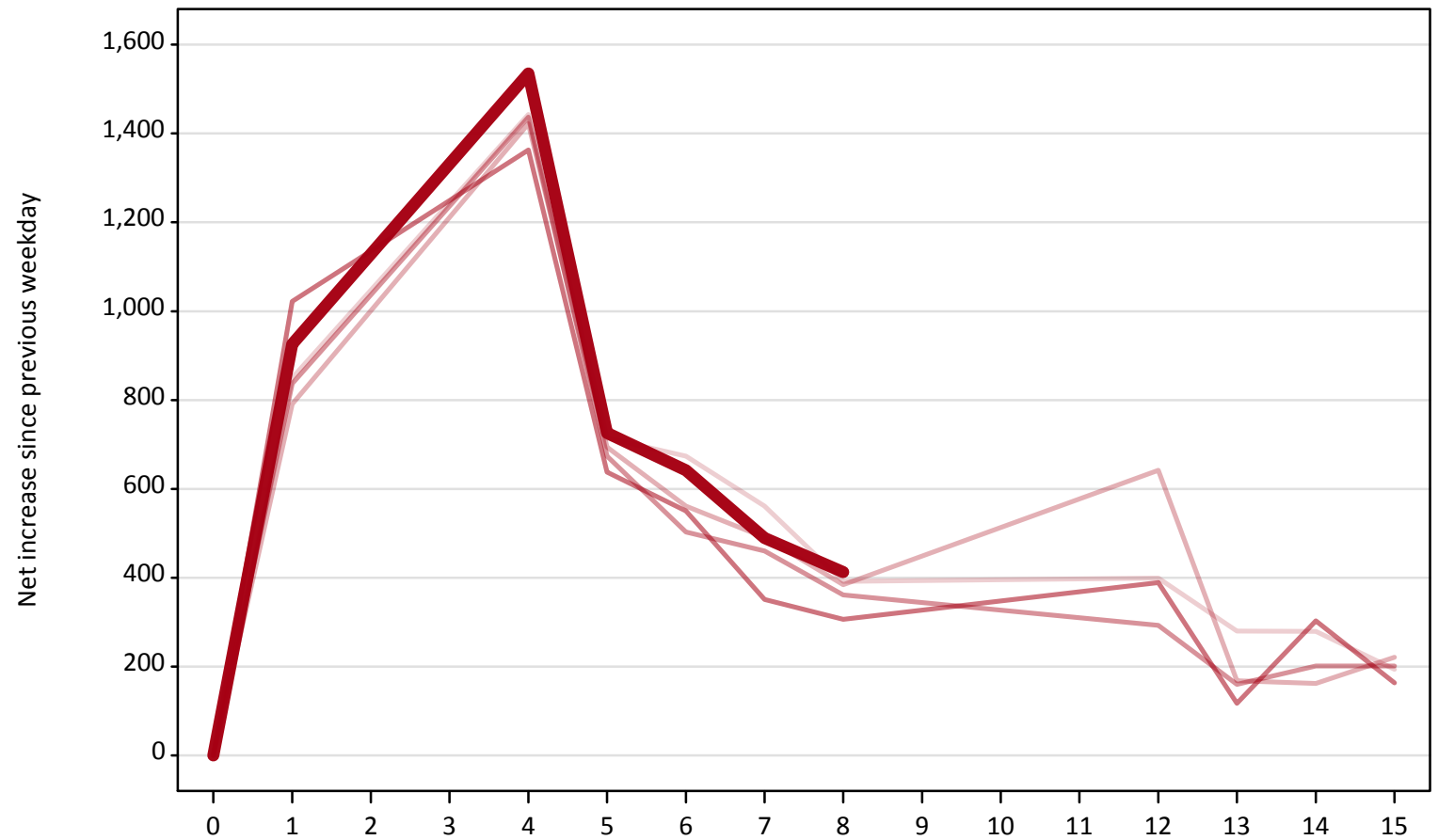
Direct to Clearing: difference between cycle and 2017 cycle

Applicant type	Status	2009	2010	2011	2012	2013	2014	2015	2016	2017	2018
Direct to Clearing	Placed (Direct to Clearing)	-37%	-37%	-44%	-25%	-16%	-22%	-15%	5%	0%	32%
	Other (Direct to Clearing)	8%	15%	6%	1%	15%	-7%	10%	-9%	0%	-1%

Note: The percentage change is not recorded in the above table for groups with fewer than 10 placed applicants in that cycle or in the 2017 cycle.

A.18 All Placed: Daily net change (from outside the EU)
Net increase since previous weekday (2018 cycle up to 8 days after A level results day)

- 2014
- 2015
- 2016
- 2017
- 2018**

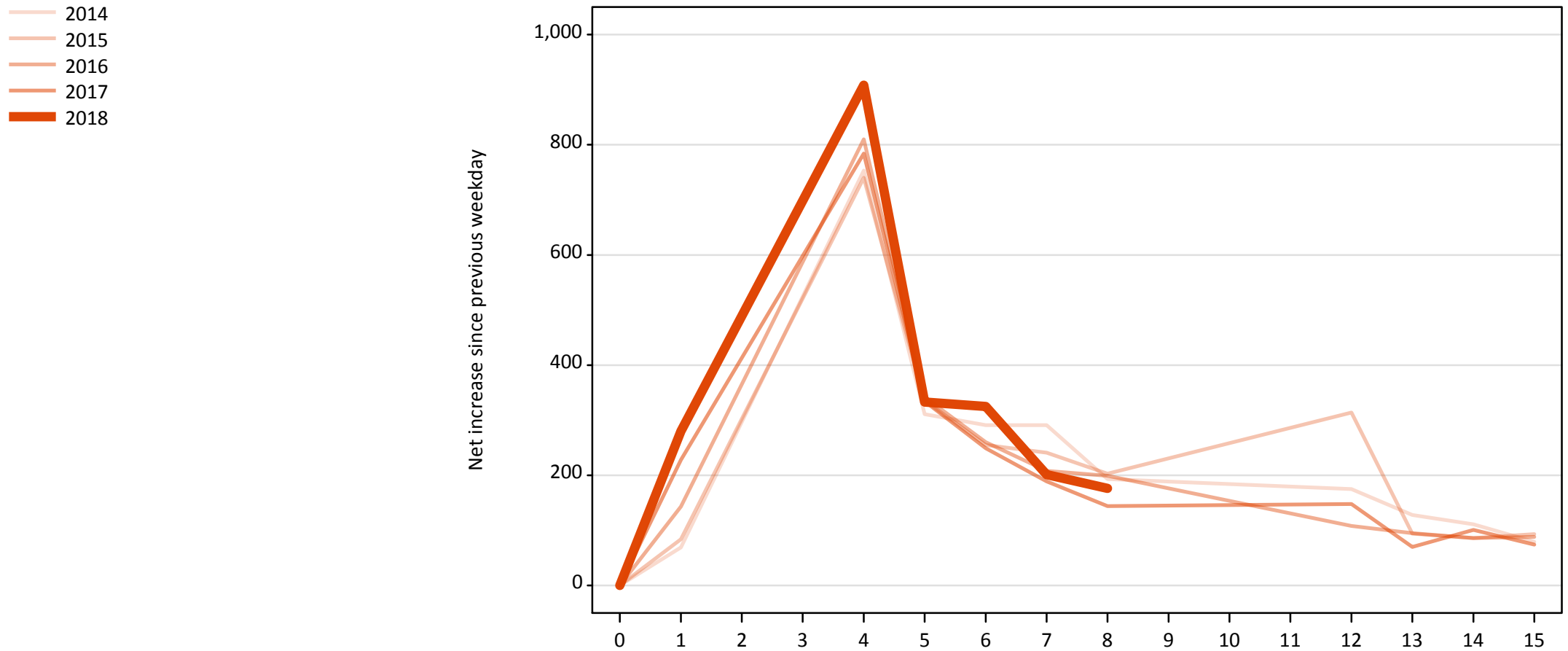


A.19 All Placed: Daily net change (from outside the EU)

Net increase since previous weekday (2018 cycle up to 8 days after A level results day)

Applicant status, days since A level results day		2014	2015	2016	2017	2018
All Placed	0	0	0	0	0	0
	1	850	790	840	1,020	930
	4	1,440	1,420	1,440	1,360	1,540
	5	710	690	670	640	730
	6	670	560	500	550	640
	7	560	490	460	350	490
	8	390	380	360	310	410
	12	400	640	290	390	
	13	280	170	160	120	
	14	280	160	200	300	
	15	190	220	200	160	

A.20 Placed through Clearing only: Daily net change (from outside the EU)
Net increase since previous weekday (2018 cycle up to 8 days after A level results day)



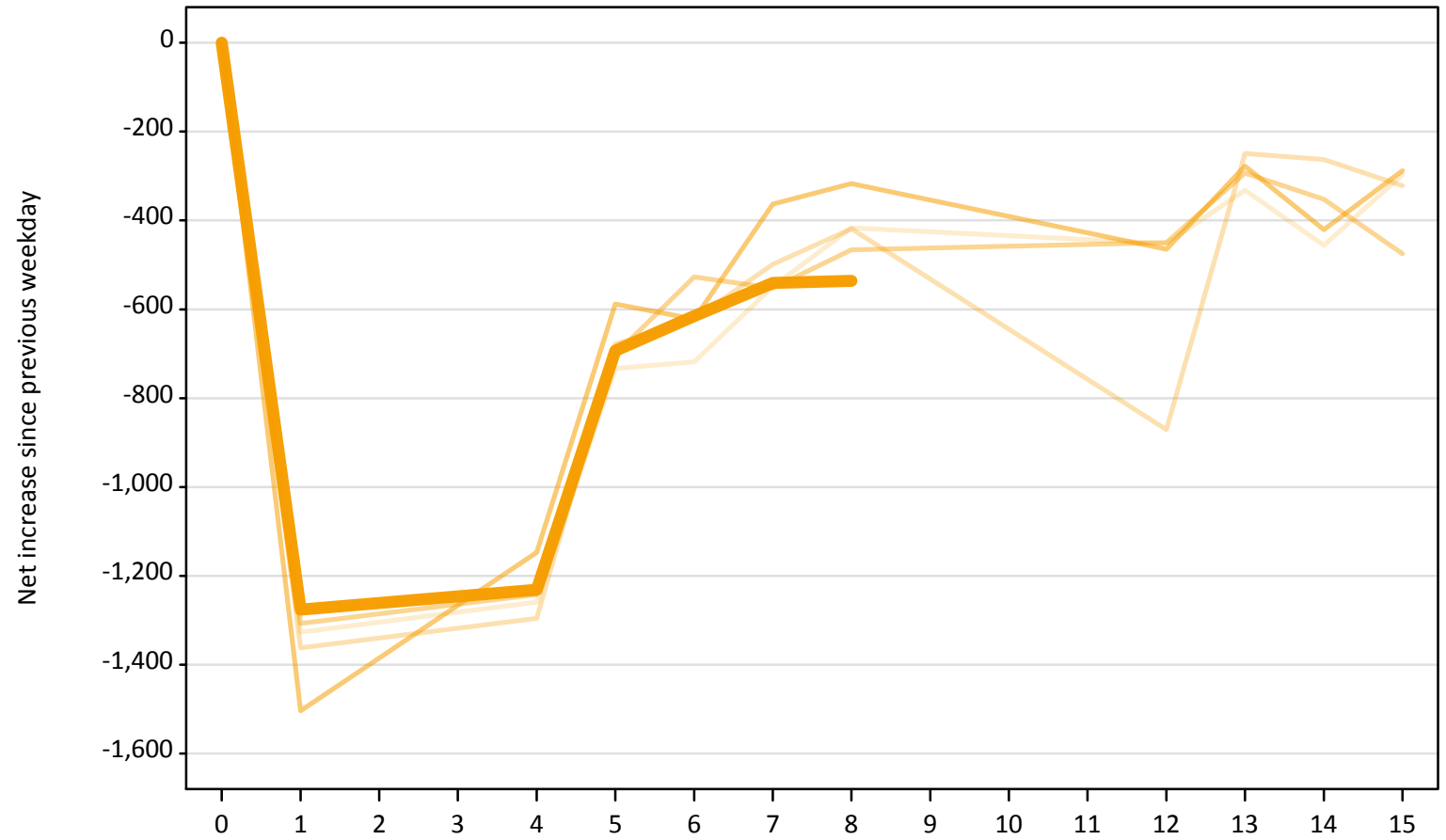
A.21 Placed through Clearing only: Daily net change (from outside the EU)

Net increase since previous weekday (2018 cycle up to 8 days after A level results day)

Applicant status, days since A level results day		2014	2015	2016	2017	2018
Placed through Clearing only	0	0	0	0	0	0
	1	70	80	140	230	280
	4	750	740	810	780	910
	5	310	340	340	330	330
	6	290	260	260	250	330
	7	290	240	210	190	200
	8	190	200	200	140	180
	12	180	310	110	150	
	13	130	90	100	70	
	14	110	90	90	100	
	15	80	90	90	70	

A.22 Holding Offer: Daily net change (from outside the EU)
Net increase since previous weekday (2018 cycle up to 8 days after A level results day)

- 2014
- 2015
- 2016
- 2017
- 2018



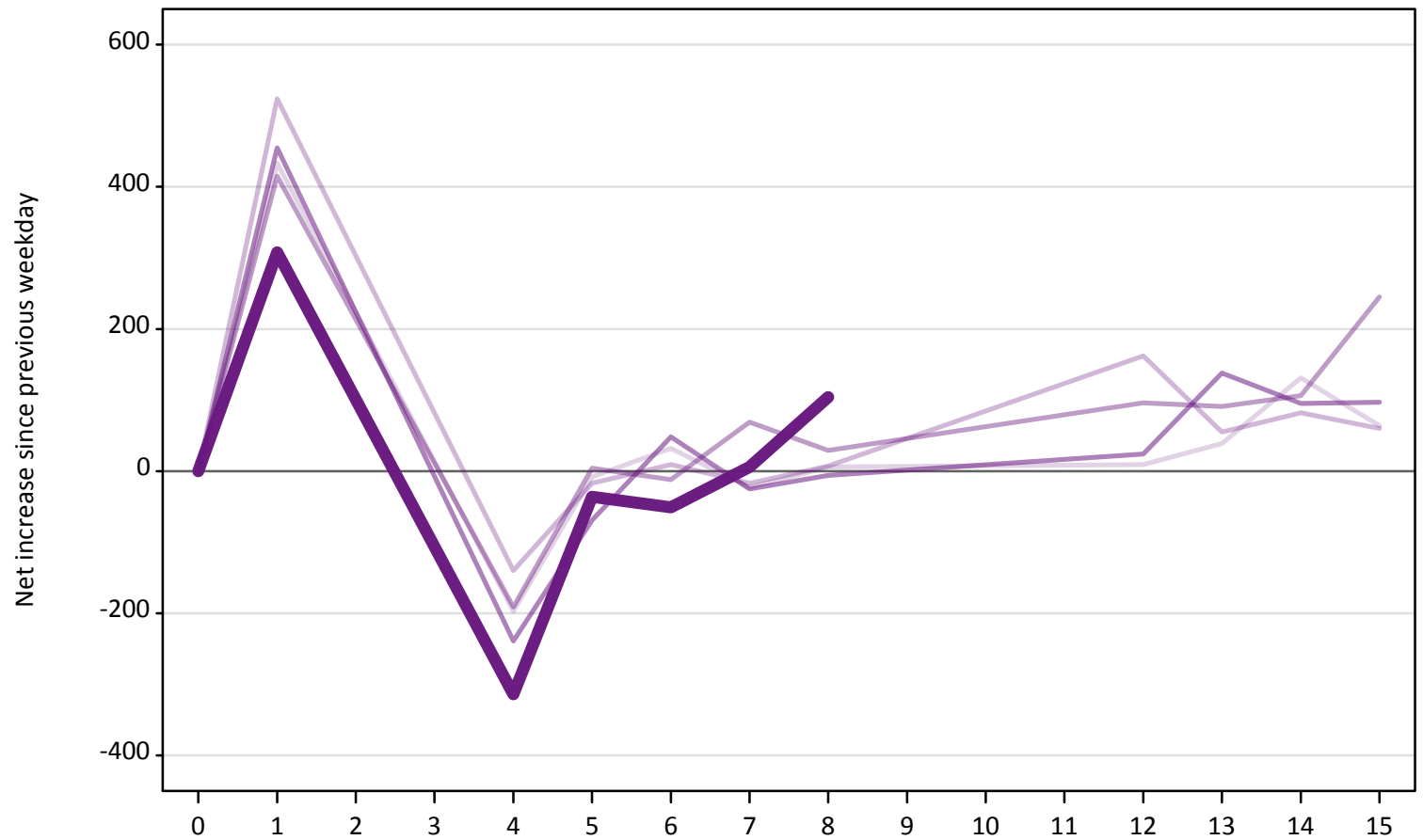
A.23 Holding Offer: Daily net change (from outside the EU)

Net increase since previous weekday (2018 cycle up to 8 days after A level results day)

Applicant status, days since A level results day	2014	2015	2016	2017	2018	
Holding Offer	0	0	0	0	0	
	1	-1,330	-1,360	-1,310	-1,500	-1,280
	4	-1,260	-1,300	-1,240	-1,150	-1,230
	5	-730	-680	-700	-590	-690
	6	-720	-620	-530	-620	-620
	7	-550	-500	-550	-360	-540
	8	-420	-420	-470	-320	-540
	12	-450	-870	-450	-470	
	13	-330	-250	-290	-280	
	14	-460	-260	-350	-420	
	15	-300	-320	-480	-290	

A.24 Free to be placed in Clearing: Daily net change (from outside the EU)
Net increase since previous weekday (2018 cycle up to 8 days after A level results day)

- 2014
- 2015
- 2016
- 2017
- 2018



A.25 Free to be placed in Clearing: Daily net change (from outside the EU)

Net increase since previous weekday (2018 cycle up to 8 days after A level results day)

Applicant status, days since A level results day		2014	2015	2016	2017	2018
Free to be placed in Clearing	0	0	0	0	0	0
	1	430	520	420	460	310
	4	-200	-140	-190	-240	-310
	5	-10	-20	0	-70	-40
	6	30	10	-10	50	-50
	7	-20	-20	70	-30	10
	8	10	10	30	-10	100
	12	10	160	100	20	
	13	40	60	90	140	
	14	130	80	110	100	
	15	60	60	250	100	