

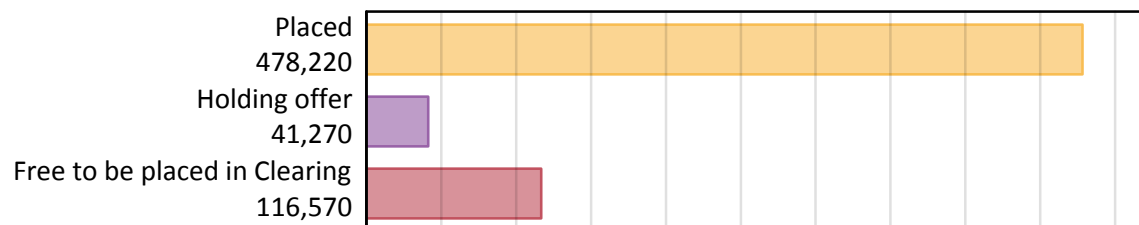
Daily Clearing Analysis: Overview

Analysis at 00:05 on Tuesday 28 August 2018 (12 days after A level results day)

A.1 Applicants by type and status from all domiciles, 2018 cycle

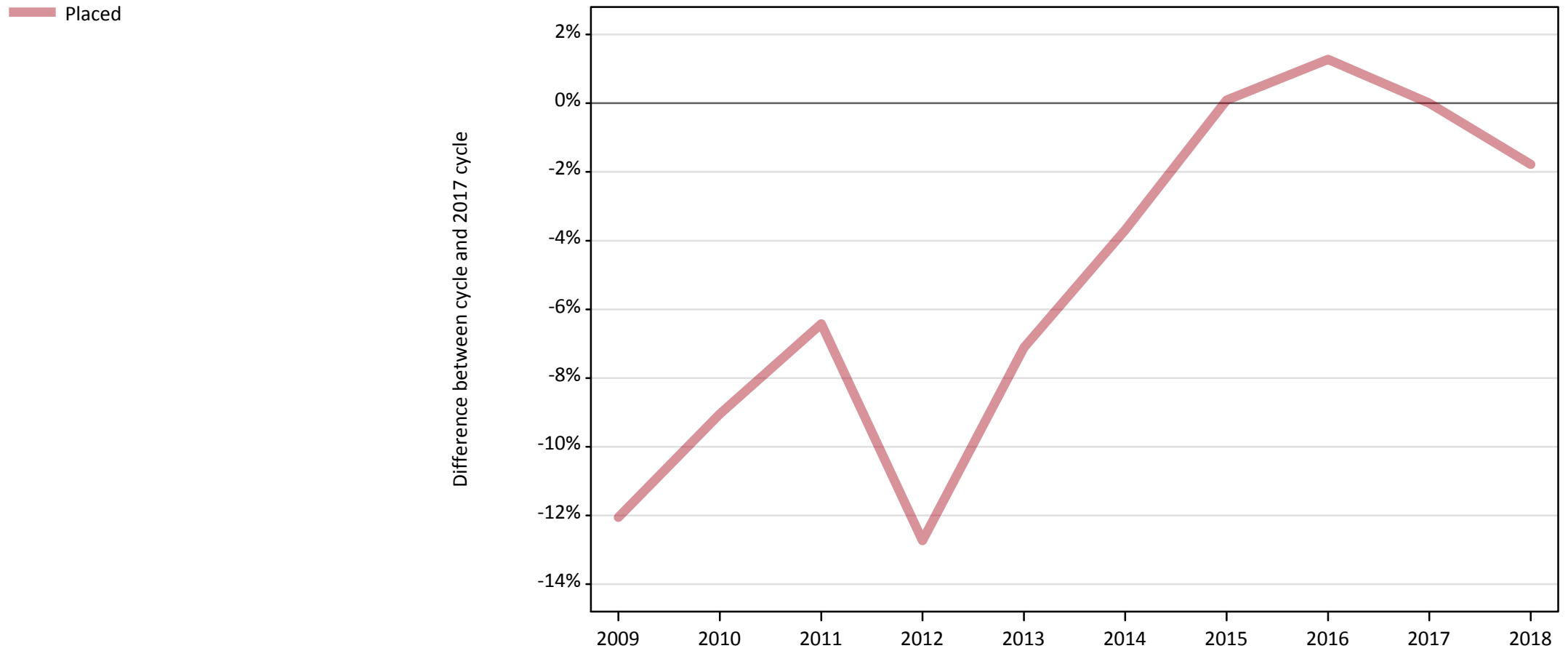
Applicant type	Status	2018
Main scheme	Placed (Clearing)	39,520
	Placed (Adjustment)	910
	Placed (Firm)	380,470
	Placed (Insurance)	33,840
	Placed (Other)	13,770
	Holding offer	41,270
	Free to be placed in Clearing	116,570
Direct to Clearing	Placed (Direct to Clearing)	9,710
	Other (Direct to Clearing)	7,860
All applicants	Placed	478,220

A.2 Summary of applicants who are placed, holding offers or free to be placed in Clearing (all domiciles)



A.3 All placed applicants from all domiciles: 12 days after A level results day

All placed applicants: difference between cycle and 2017 cycle



Note: The percentage change is not plotted in the above chart for groups with fewer than 30 placed applicants in any one cycle.

A.4 All placed applicants from all domiciles: 12 days after A level results day

All placed applicants: applicants at 12 days after A level results day

Applicant type	Status	2009	2010	2011	2012	2013	2014	2015	2016	2017	2018
All applicants	Placed	428,200	442,860	455,630	424,880	452,250	468,910	487,330	493,100	486,890	478,220

A.5 All placed applicants from all domiciles: 12 days after A level results day

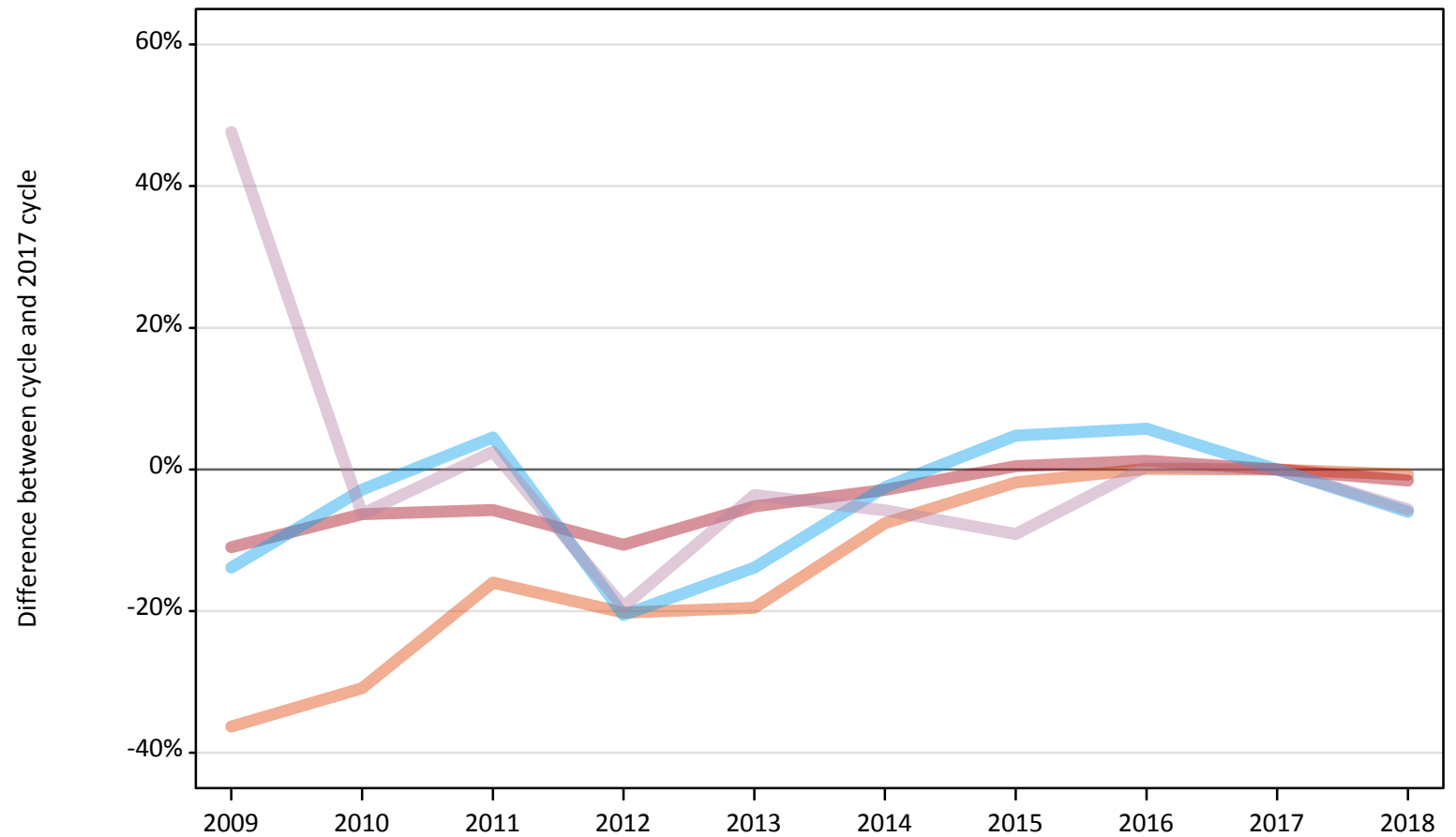
All placed applicants: difference between cycle and 2017 cycle

Applicant type	Status	2009	2010	2011	2012	2013	2014	2015	2016	2017	2018
All applicants	Placed	-12%	-9%	-6%	-13%	-7%	-4%	0%	1%	0%	-2%

Note: The percentage change is not recorded in the above table for groups with fewer than 10 placed applicants in that cycle or in the 2017 cycle.

A.6 Placed main scheme applicants from all domiciles: 12 days after A level results day
All Main scheme placed routes (excluding Adjustment): difference between cycle and 2017 cycle

- Placed (Clearing)
- Placed (Firm)
- Placed (Insurance)
- Placed (Other)



Note: The percentage change is not plotted in the above chart for groups with fewer than 30 placed applicants in any one cycle.

A.7 Placed main scheme applicants from all domiciles: 12 days after A level results day

All Main scheme placed routes (excluding Adjustment): applicants at 12 days after A level results day

Applicant type	Status	2009	2010	2011	2012	2013	2014	2015	2016	2017	2018
Main scheme	Placed (Clearing)	25,350	27,510	33,450	31,760	32,030	36,790	39,080	39,850	39,810	39,520
	Placed (Firm)	344,120	362,170	364,450	345,510	366,480	375,410	388,350	391,340	386,610	380,470
	Placed (Insurance)	31,000	34,970	37,620	28,600	31,000	35,090	37,710	38,060	35,990	33,840
	Placed (Other)	21,550	13,680	14,960	11,770	14,070	13,760	13,260	14,660	14,600	13,770

A.8 Placed main scheme applicants from all domiciles: 12 days after A level results day

All Main scheme placed routes (excluding Adjustment): difference between cycle and 2017 cycle

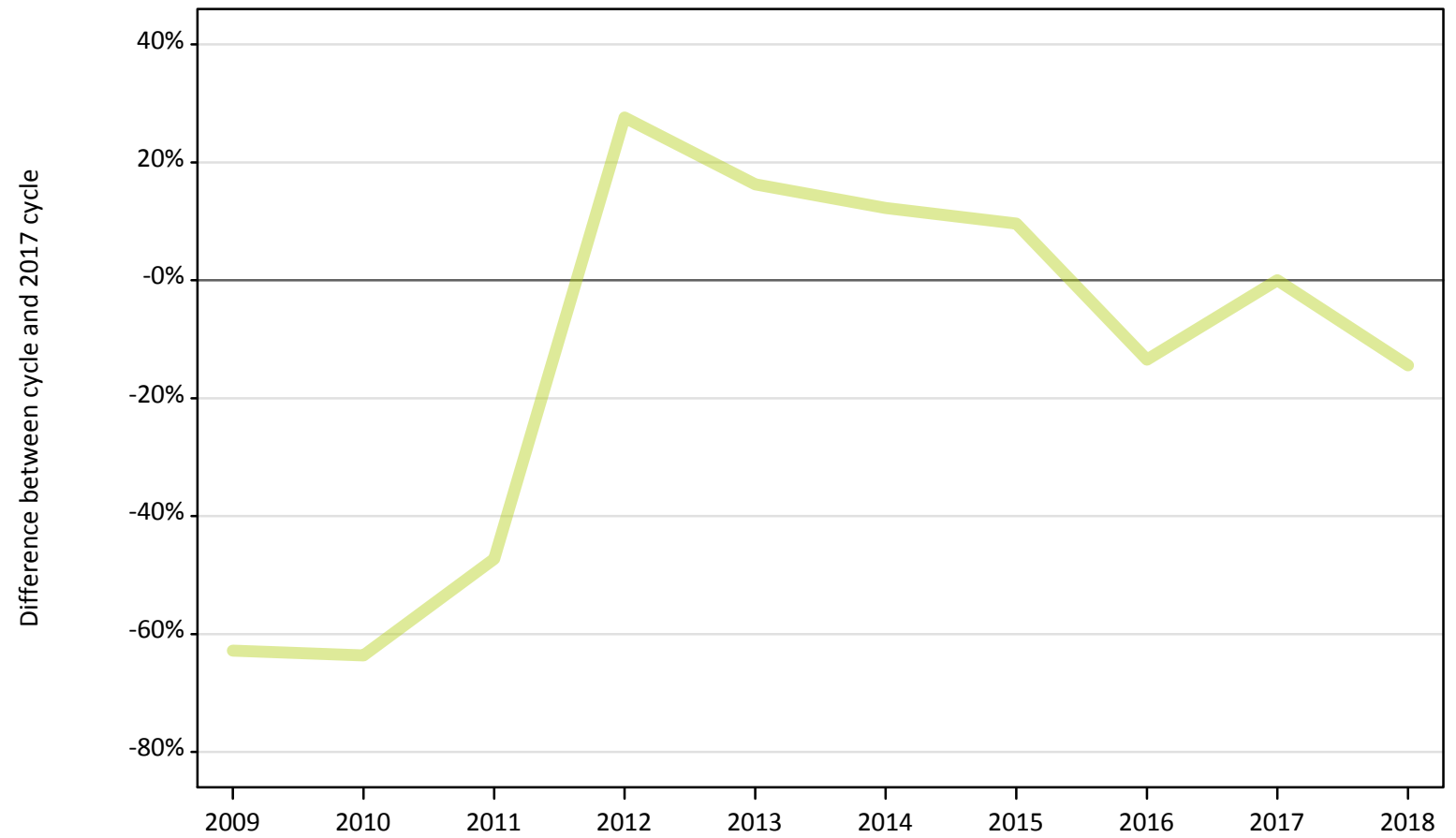
Applicant type	Status	2009	2010	2011	2012	2013	2014	2015	2016	2017	2018
Main scheme	Placed (Clearing)	-36%	-31%	-16%	-20%	-20%	-8%	-2%	0%	0%	-1%
	Placed (Firm)	-11%	-6%	-6%	-11%	-5%	-3%	0%	1%	0%	-2%
	Placed (Insurance)	-14%	-3%	5%	-21%	-14%	-3%	5%	6%	0%	-6%
	Placed (Other)	48%	-6%	2%	-19%	-4%	-6%	-9%	0%	0%	-6%

Note: The percentage change is not recorded in the above table for groups with fewer than 10 placed applicants in that cycle or in the 2017 cycle.

A.9 Main scheme applicants placed through adjustment: 12 days after A level results day

Placed through adjustment: difference between cycle and 2017 cycle

Placed (Adjustment)



Note: The percentage change is not plotted in the above chart for groups with fewer than 30 placed applicants in any one cycle.

A.10 Main scheme applicants placed through adjustment: 12 days after A level results day

Placed through adjustment: applicants at 12 days after A level results day

Applicant type	Status	2009	2010	2011	2012	2013	2014	2015	2016	2017	2018
Main scheme	Placed (Adjustment)	400	390	560	1,360	1,240	1,190	1,160	920	1,060	910

A.11 Main scheme applicants placed through adjustment: 12 days after A level results day

Placed through adjustment: difference between cycle and 2017 cycle

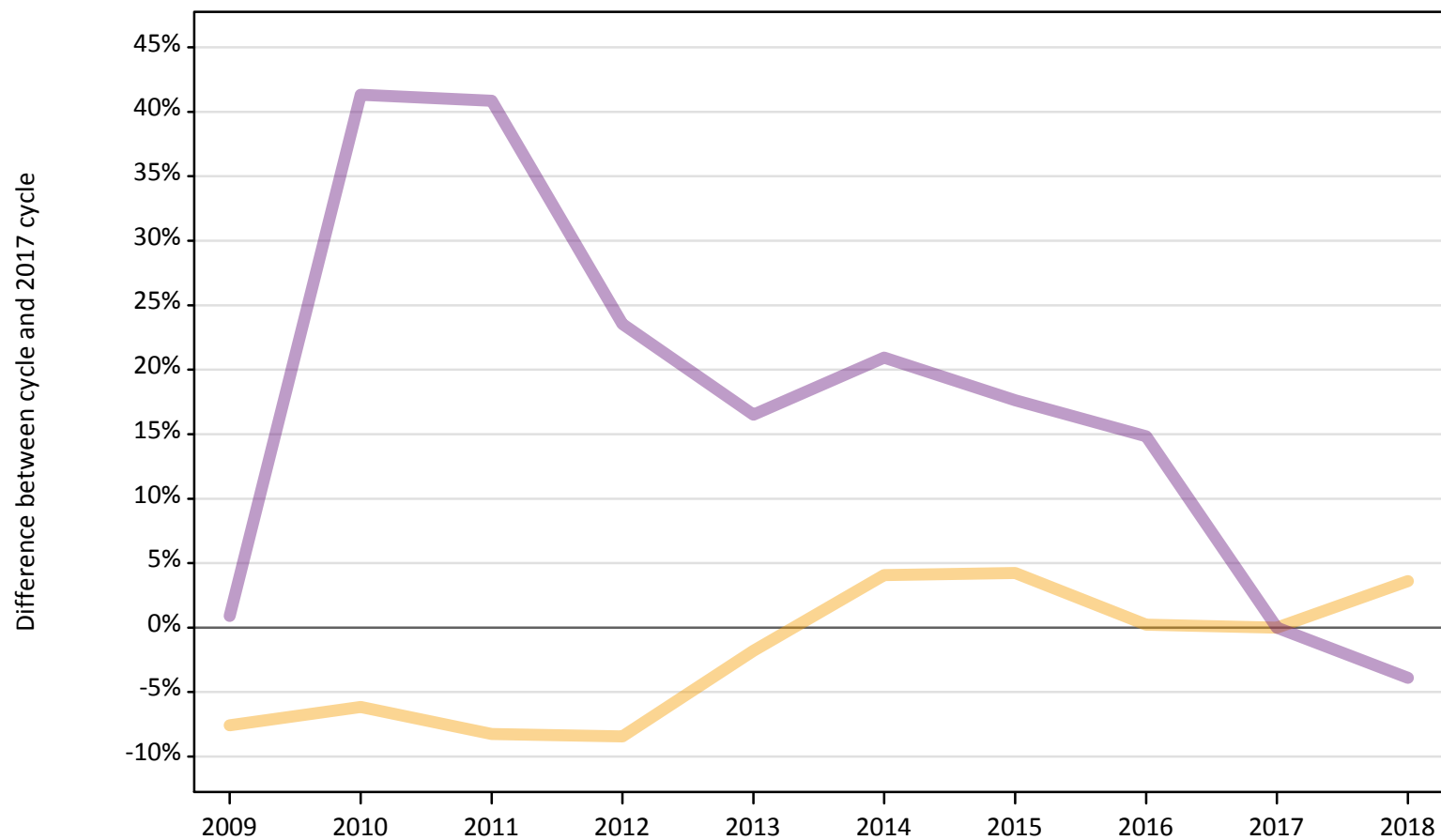
Applicant type	Status	2009	2010	2011	2012	2013	2014	2015	2016	2017	2018
Main scheme	Placed (Adjustment)	-63%	-64%	-47%	28%	16%	12%	10%	-13%	0%	-14%

Note: The percentage change is not recorded in the above table for groups with fewer than 10 placed applicants in that cycle or in the 2017 cycle.

A.12 Main scheme applicants not currently placed from all domiciles: 12 days after A level results day

Applicants in unplaced states: difference between cycle and 2017 cycle

— Holding offer
— Free to be placed in Clearing



Note: The percentage change is not plotted in the above chart for groups with fewer than 30 unplaced applicants in any one cycle.

A.13 Main scheme applicants not currently placed from all domiciles: 12 days after A level results day

Applicants in unplaced states: applicants at 12 days after A level results day

Applicant type	Status	2009	2010	2011	2012	2013	2014	2015	2016	2017	2018
Main scheme	Holding offer	36,810	37,370	36,540	36,460	39,110	41,440	41,510	39,910	39,830	41,270
	Free to be placed in Clearing	122,390	171,420	170,850	149,850	141,310	146,680	142,660	139,280	121,290	116,570

A.14 Main scheme applicants not currently placed from all domiciles: 12 days after A level results day

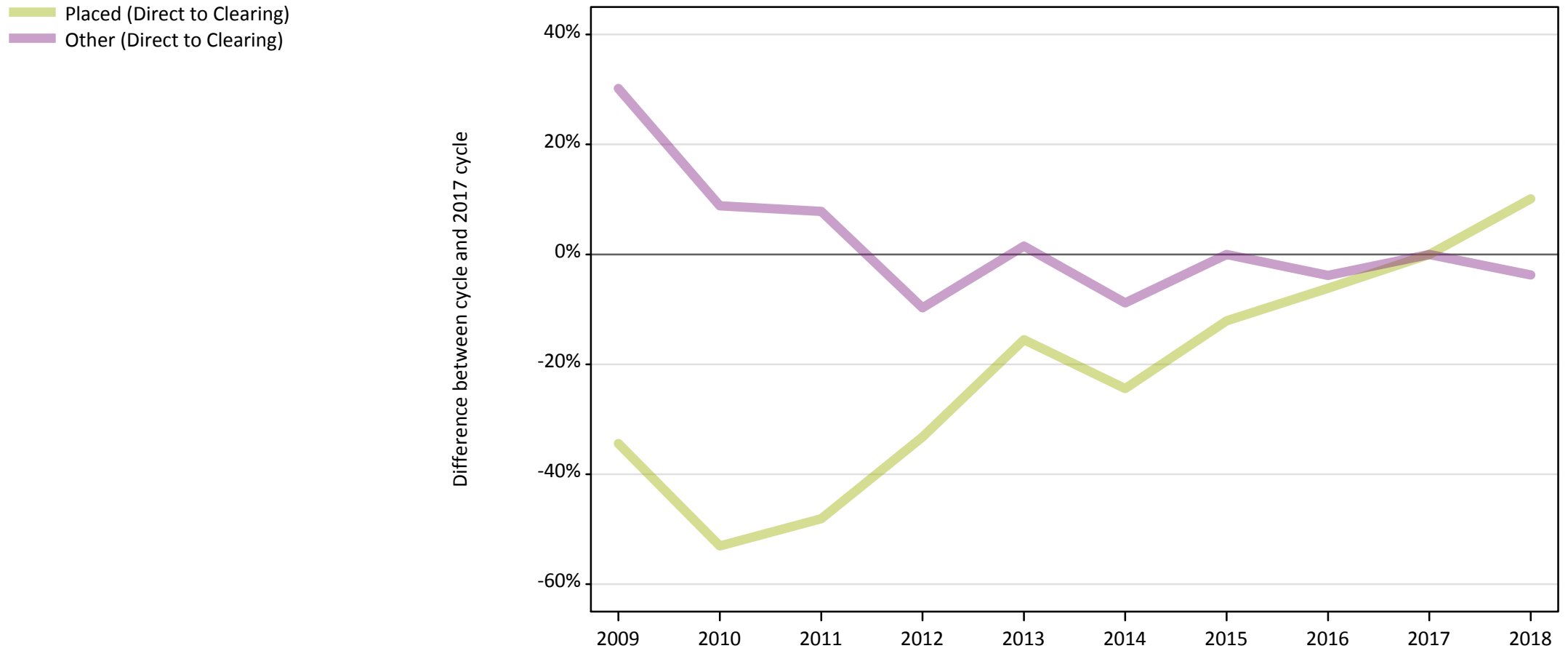
Applicants in unplaced states: difference between cycle and 2017 cycle

Applicant type	Status	2009	2010	2011	2012	2013	2014	2015	2016	2017	2018
Main scheme	Holding offer	-8%	-6%	-8%	-8%	-2%	4%	4%	0%	0%	4%
	Free to be placed in Clearing	1%	41%	41%	24%	17%	21%	18%	15%	0%	-4%

Note: The percentage change is not recorded in the above table for groups with fewer than 10 unplaced applicants in that cycle or in the 2017 cycle.

A.15 Direct to Clearing applicants from all domiciles: 12 days after A level results day

Direct to Clearing: difference between cycle and 2017 cycle



Note: The percentage change is not plotted in the above chart for groups with fewer than 30 placed applicants in any one cycle.

A.16 Direct to Clearing applicants from all domiciles: 12 days after A level results day

Direct to Clearing 12 days after A level results day

Applicant type	Status	2009	2010	2011	2012	2013	2014	2015	2016	2017	2018
Direct to Clearing	Placed (Direct to Clearing)	5,780	4,140	4,580	5,890	7,450	6,660	7,750	8,270	8,820	9,710
	Other (Direct to Clearing)	10,620	8,880	8,800	7,370	8,290	7,440	8,160	7,850	8,160	7,860

A.17 Direct to Clearing applicants from all domiciles: 12 days after A level results day

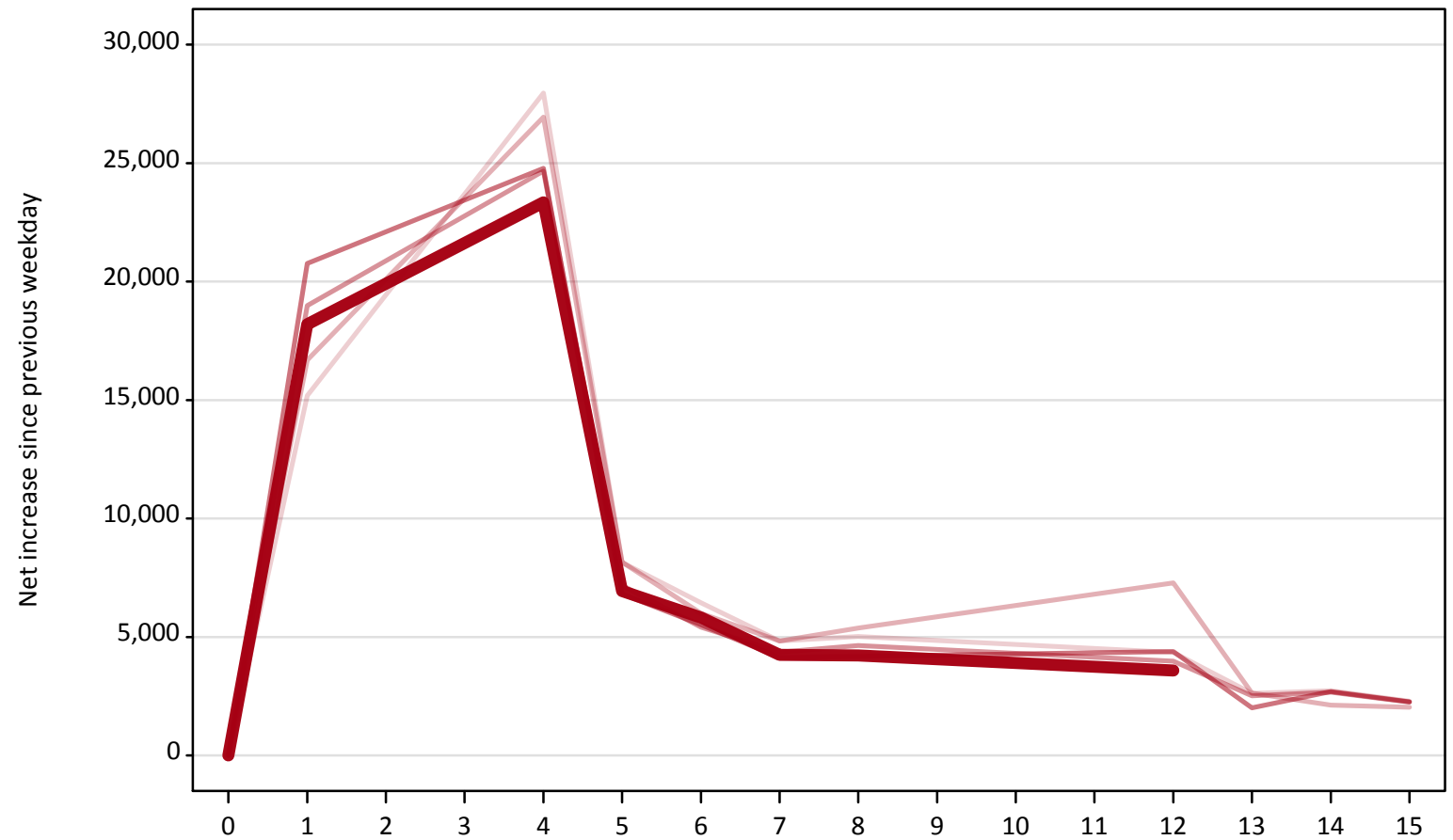
Direct to Clearing: difference between cycle and 2017 cycle

Applicant type	Status	2009	2010	2011	2012	2013	2014	2015	2016	2017	2018
Direct to Clearing	Placed (Direct to Clearing)	-34%	-53%	-48%	-33%	-16%	-24%	-12%	-6%	0%	10%
	Other (Direct to Clearing)	30%	9%	8%	-10%	2%	-9%	0%	-4%	0%	-4%

Note: The percentage change is not recorded in the above table for groups with fewer than 10 placed applicants in that cycle or in the 2017 cycle.

A.18 All Placed: Daily net change (from all domiciles)
Net increase since previous weekday (2018 cycle up to 12 days after A level results day)

- 2014
- 2015
- 2016
- 2017
- 2018**

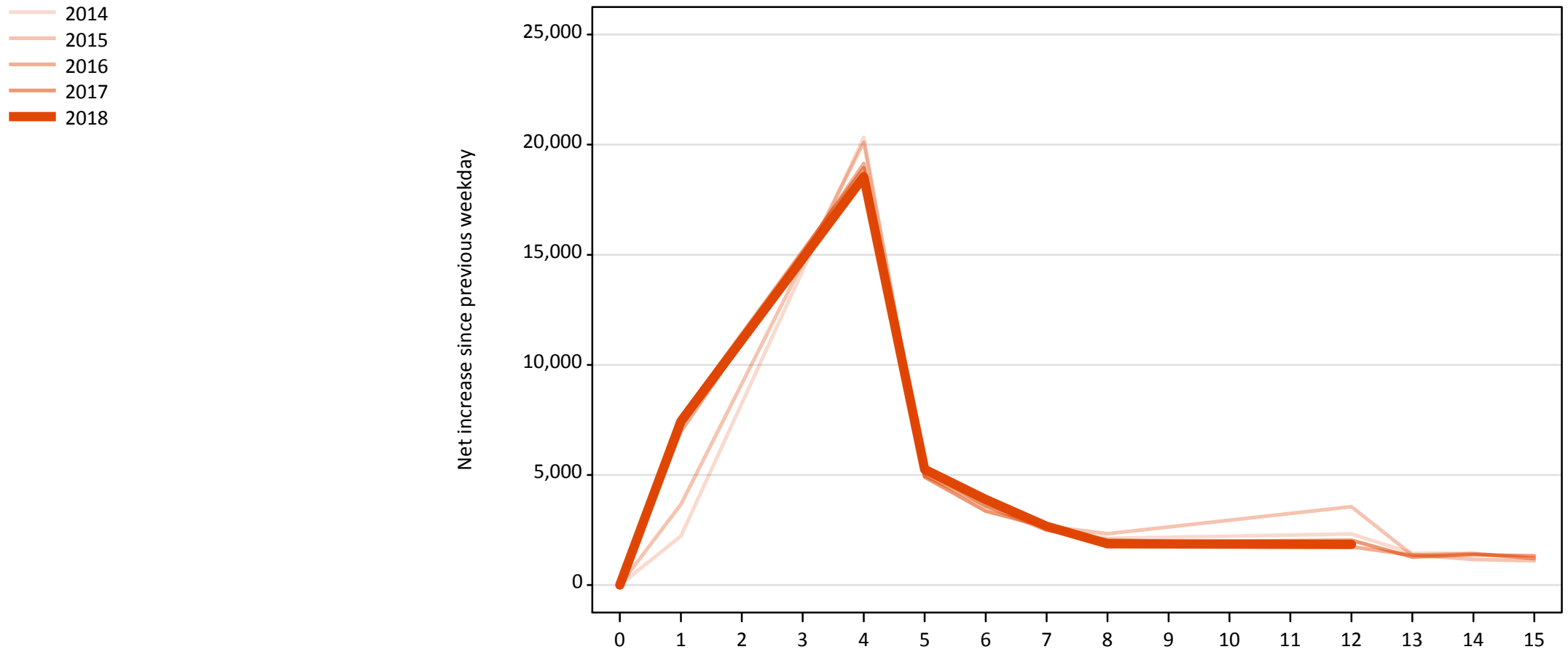


A.19 All Placed: Daily net change (from all domiciles)

Net increase since previous weekday (2018 cycle up to 12 days after A level results day)

Applicant status, days since A level results day		2014	2015	2016	2017	2018
All Placed	0	0	0	0	0	0
	1	15,180	16,680	18,990	20,770	18,200
	4	27,960	26,940	24,670	24,790	23,340
	5	8,140	8,160	7,170	6,810	6,940
	6	6,450	6,000	5,410	5,510	5,820
	7	4,830	4,830	4,350	4,140	4,240
	8	5,020	5,370	4,640	4,190	4,220
	12	4,340	7,280	3,980	4,380	3,590
	13	2,620	2,630	2,510	2,010	
	14	2,730	2,120	2,660	2,700	
	15	2,280	2,030	2,250	2,260	

A.20 Placed through Clearing only: Daily net change (from all domiciles)
Net increase since previous weekday (2018 cycle up to 12 days after A level results day)



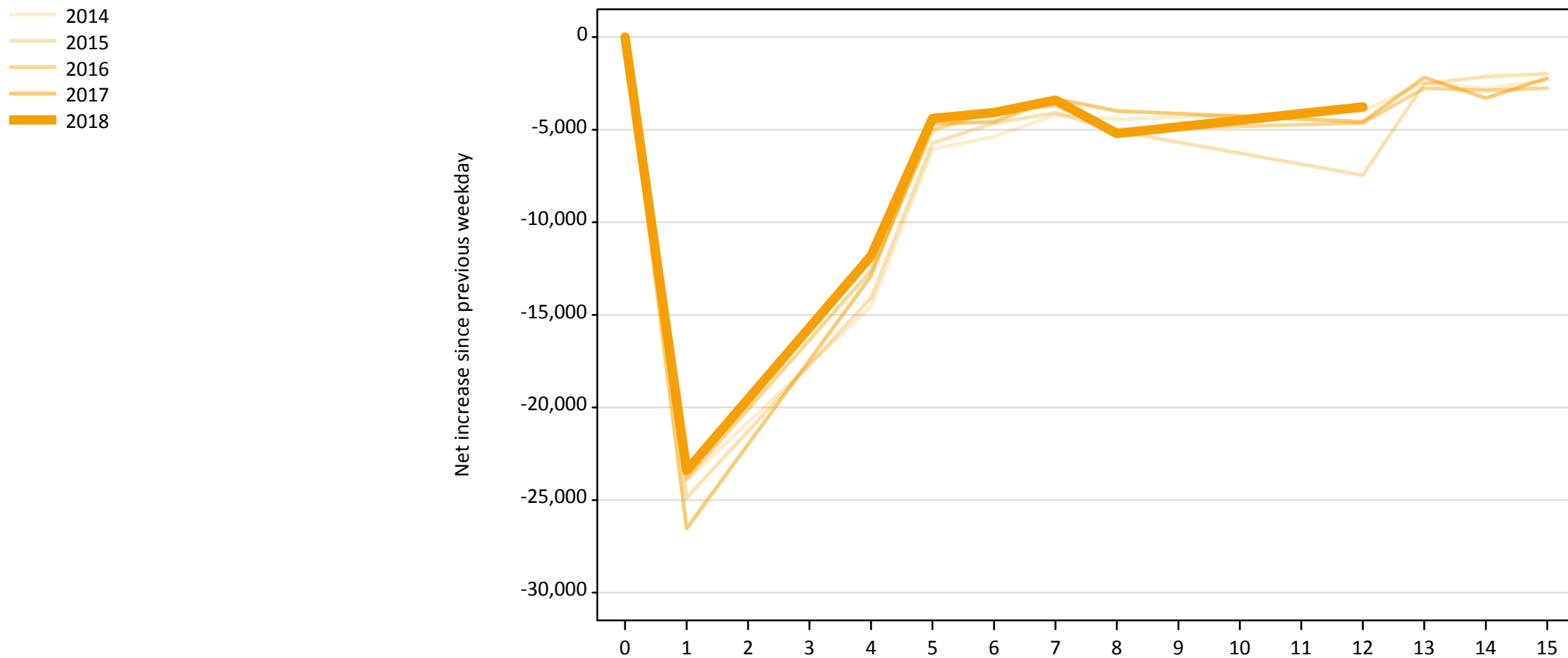
A.21 Placed through Clearing only: Daily net change (from all domiciles)

Net increase since previous weekday (2018 cycle up to 12 days after A level results day)

Applicant status, days since A level results day		2014	2015	2016	2017	2018
Placed through Clearing only	0	0	0	0	0	0
	1	2,220	3,660	6,970	7,640	7,440
	4	20,340	20,110	19,140	18,940	18,550
	5	4,950	5,290	4,960	4,910	5,250
	6	3,810	3,560	3,590	3,360	3,890
	7	2,650	2,680	2,480	2,640	2,660
	8	2,120	2,330	2,050	1,950	1,880
	12	2,310	3,550	1,740	2,030	1,840
	13	1,450	1,370	1,350	1,270	
	14	1,450	1,160	1,420	1,370	
	15	1,190	1,100	1,210	1,320	

A.22 Holding Offer: Daily net change (from all domiciles)

Net increase since previous weekday (2018 cycle up to 12 days after A level results day)



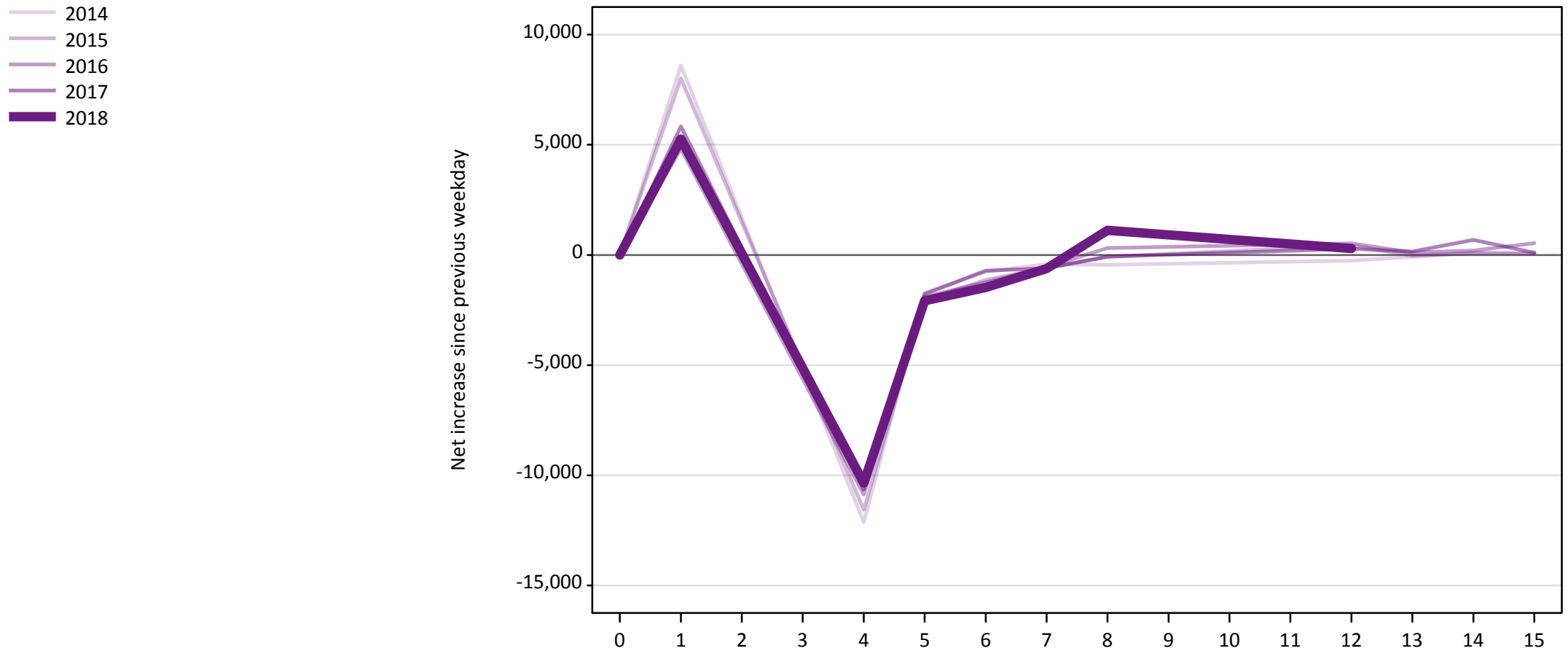
A.23 Holding Offer: Daily net change (from all domiciles)

Net increase since previous weekday (2018 cycle up to 12 days after A level results day)

Applicant status, days since A level results day	2014	2015	2016	2017	2018	
Holding Offer	0	0	0	0	0	
	1	-23,940	-24,880	-23,840	-26,530	-23,410
	4	-14,530	-14,080	-12,600	-12,900	-11,810
	5	-6,060	-5,720	-5,030	-4,680	-4,390
	6	-5,380	-4,650	-3,970	-4,580	-4,080
	7	-4,210	-4,090	-3,700	-3,330	-3,400
	8	-4,430	-5,080	-4,990	-3,990	-5,210
	12	-3,980	-7,460	-4,640	-4,580	-3,770
	13	-2,450	-2,520	-2,760	-2,180	
	14	-2,790	-2,130	-2,880	-3,280	
	15	-2,330	-1,980	-2,760	-2,230	

A.24 Free to be placed in Clearing: Daily net change (from all domiciles)

Net increase since previous weekday (2018 cycle up to 12 days after A level results day)



A.25 Free to be placed in Clearing: Daily net change (from all domiciles)

Net increase since previous weekday (2018 cycle up to 12 days after A level results day)

Applicant status, days since A level results day		2014	2015	2016	2017	2018
Free to be placed in Clearing	0	0	0	0	0	0
	1	8,600	8,010	4,820	5,830	5,260
	4	-12,130	-11,570	-10,870	-10,650	-10,350
	5	-1,720	-2,040	-1,900	-1,780	-2,080
	6	-770	-1,130	-1,250	-710	-1,480
	7	-420	-570	-540	-610	-620
	8	-450	-80	310	-80	1,120
	12	-260	430	530	280	290
	13	-90	-40	120	150	
	14	100	80	200	680	
	15	90	60	530	100	