

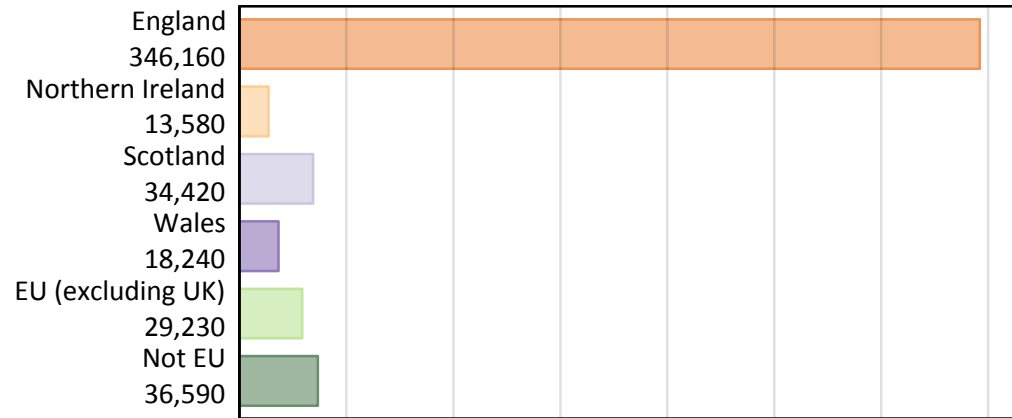
# Daily Clearing Analysis: Country

Analysis at 00:05 on Tuesday 28 August 2018 (12 days after A level results day)

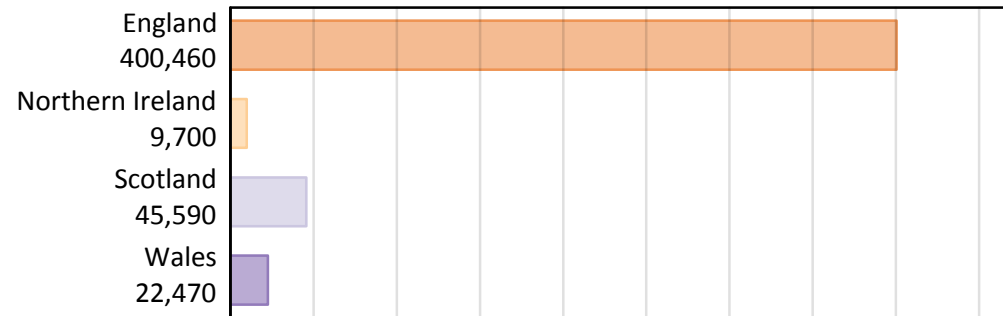
## B.1 Placed applicants by country of provider and domicile, 2018 cycle

Domicile of applicant	Country of provider				
	England	Northern Ireland	Scotland	Wales	UK
England	331,430	310	4,600	9,820	346,160
Northern Ireland	3,760	8,700	980	140	13,580
Scotland	1,460	30	32,890	40	34,420
Wales	7,700	10	140	10,380	18,240
EU (excluding UK)	23,730	390	4,030	1,090	29,230
Not EU	32,380	270	2,940	1,000	36,590
All	400,460	9,700	45,590	22,470	478,220

### B.2 Placed applicants by domicile group



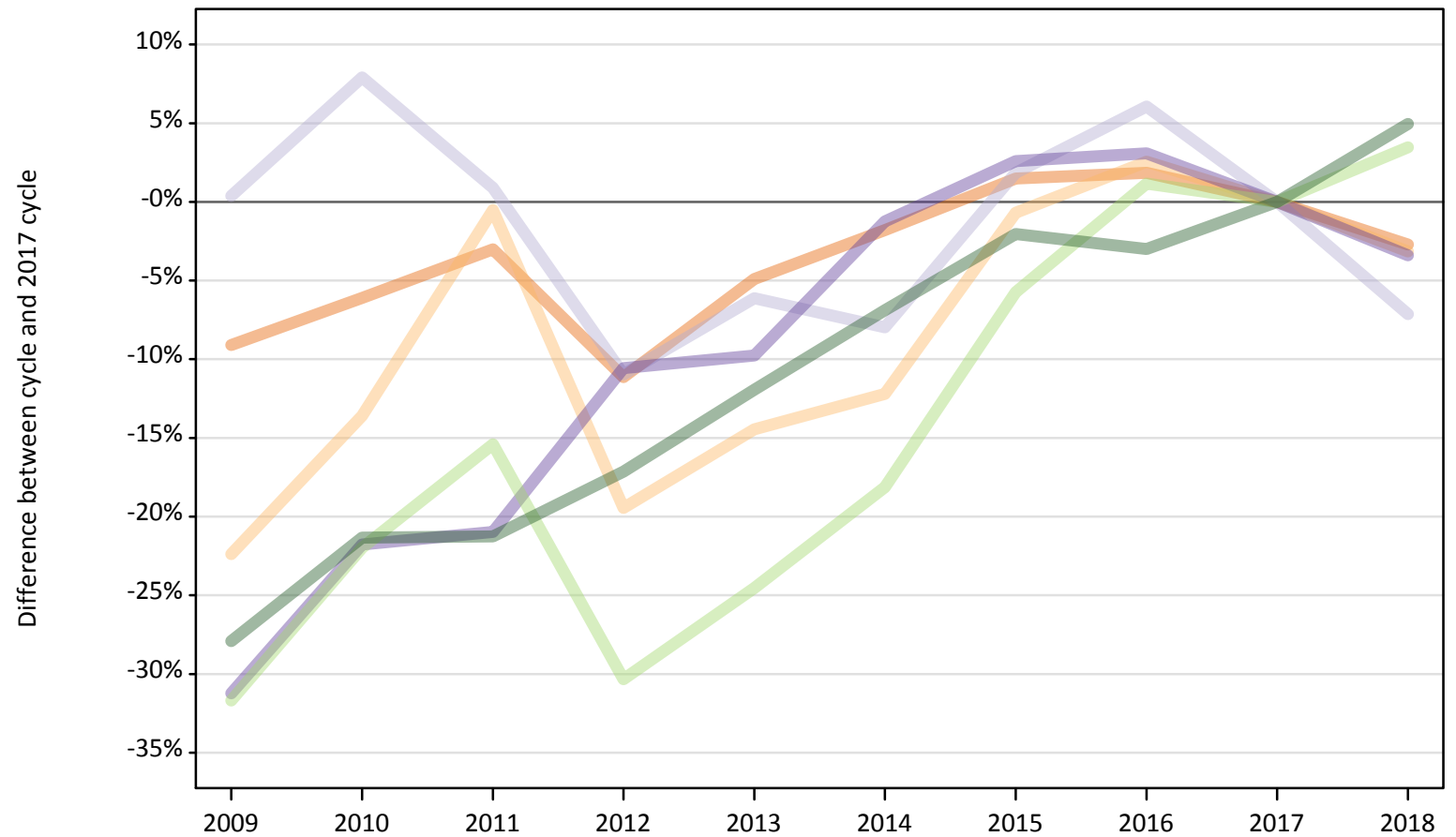
### B.3 Placed applicants by country of provider



### B.4 Placed applicants at 12 days after A level results day: providers in England

Selected applicant domiciles: difference between cycle and 2017 cycle (at 12 days after A level results day)

- England
- Northern Ireland
- Scotland
- Wales
- EU (excluding UK)
- Not EU



Note: The percentage change is not plotted in the above chart for groups with fewer than 30 placed applicants in any one cycle.

### B.5 Placed applicants at 12 days after A level results day: providers in England

Placed applicants by domicile (at 12 days after A level results day)

Domicile of applicant	2009	2010	2011	2012	2013	2014	2015	2016	2017	2018
England	309,660	319,820	330,360	302,680	323,920	334,490	345,690	346,910	340,640	331,430
Northern Ireland	3,020	3,360	3,860	3,130	3,320	3,410	3,860	3,980	3,880	3,760
Scotland	1,580	1,690	1,580	1,400	1,470	1,440	1,600	1,660	1,570	1,460
Wales	5,490	6,240	6,300	7,130	7,200	7,880	8,180	8,220	7,980	7,700
EU (excluding UK)	15,670	17,890	19,400	15,980	17,310	18,770	21,620	23,200	22,930	23,730
Not EU	22,240	24,270	24,290	25,560	27,170	28,720	30,220	29,920	30,850	32,380

### B.6 Placed applicants at 12 days after A level results day: providers in England

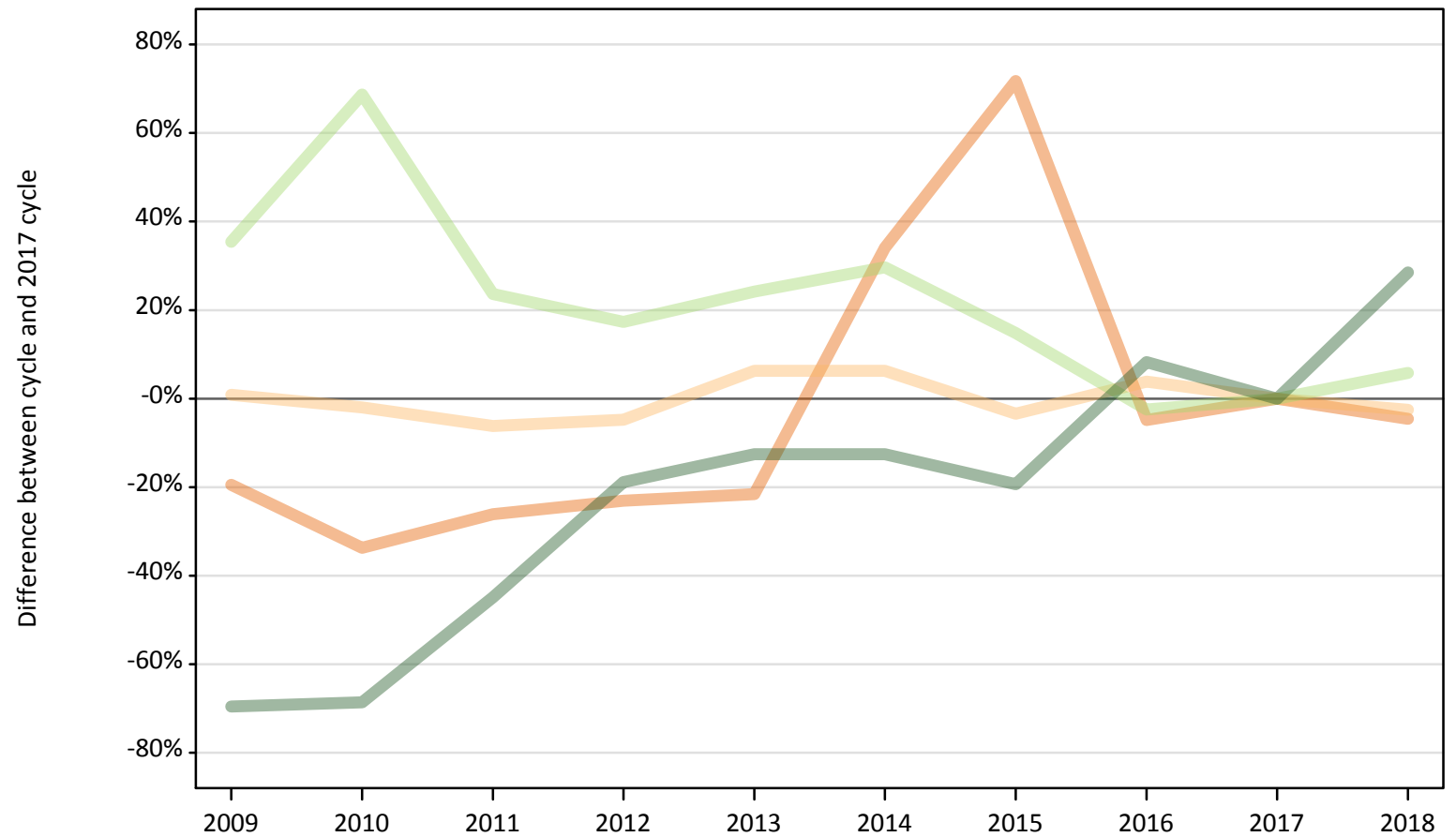
Selected applicant domiciles: difference between cycle and 2017 cycle (at 12 days after A level results day)

Domicile of applicant	2009	2010	2011	2012	2013	2014	2015	2016	2017	2018
England	-9%	-6%	-3%	-11%	-5%	-2%	1%	2%	0%	-3%
Northern Ireland	-22%	-14%	-1%	-19%	-14%	-12%	-1%	3%	0%	-3%
Scotland	0%	8%	1%	-11%	-6%	-8%	2%	6%	0%	-7%
Wales	-31%	-22%	-21%	-11%	-10%	-1%	3%	3%	0%	-3%
EU (excluding UK)	-32%	-22%	-15%	-30%	-25%	-18%	-6%	1%	0%	3%
Not EU	-28%	-21%	-21%	-17%	-12%	-7%	-2%	-3%	0%	5%

Note: The percentage change is not recorded in the above table for groups with fewer than 10 placed applicants in that cycle or in the 2017 cycle.

**B.7 Placed applicants at 12 days after A level results day: providers in Northern Ireland**  
Selected applicant domiciles: difference between cycle and 2017 cycle (at 12 days after A level results day)

- England
- Northern Ireland
- Scotland
- Wales
- EU (excluding UK)
- Not EU



Note: The percentage change is not plotted in the above chart for groups with fewer than 30 placed applicants in any one cycle.

### B.8 Placed applicants at 12 days after A level results day: providers in Northern Ireland

Placed applicants by domicile (at 12 days after A level results day)

Domicile of applicant	2009	2010	2011	2012	2013	2014	2015	2016	2017	2018
England	270	220	240	250	260	440	570	310	330	310
Northern Ireland	9,000	8,740	8,370	8,500	9,480	9,480	8,620	9,260	8,920	8,700
Scotland	20	20	20	30	10	20	20	20	30	30
Wales	10	10	10	0	10	10	10	10	10	10
EU (excluding UK)	490	610	450	430	450	470	420	360	360	390
Not EU	60	70	110	170	180	180	170	220	210	270

### B.9 Placed applicants at 12 days after A level results day: providers in Northern Ireland

Selected applicant domiciles: difference between cycle and 2017 cycle (at 12 days after A level results day)

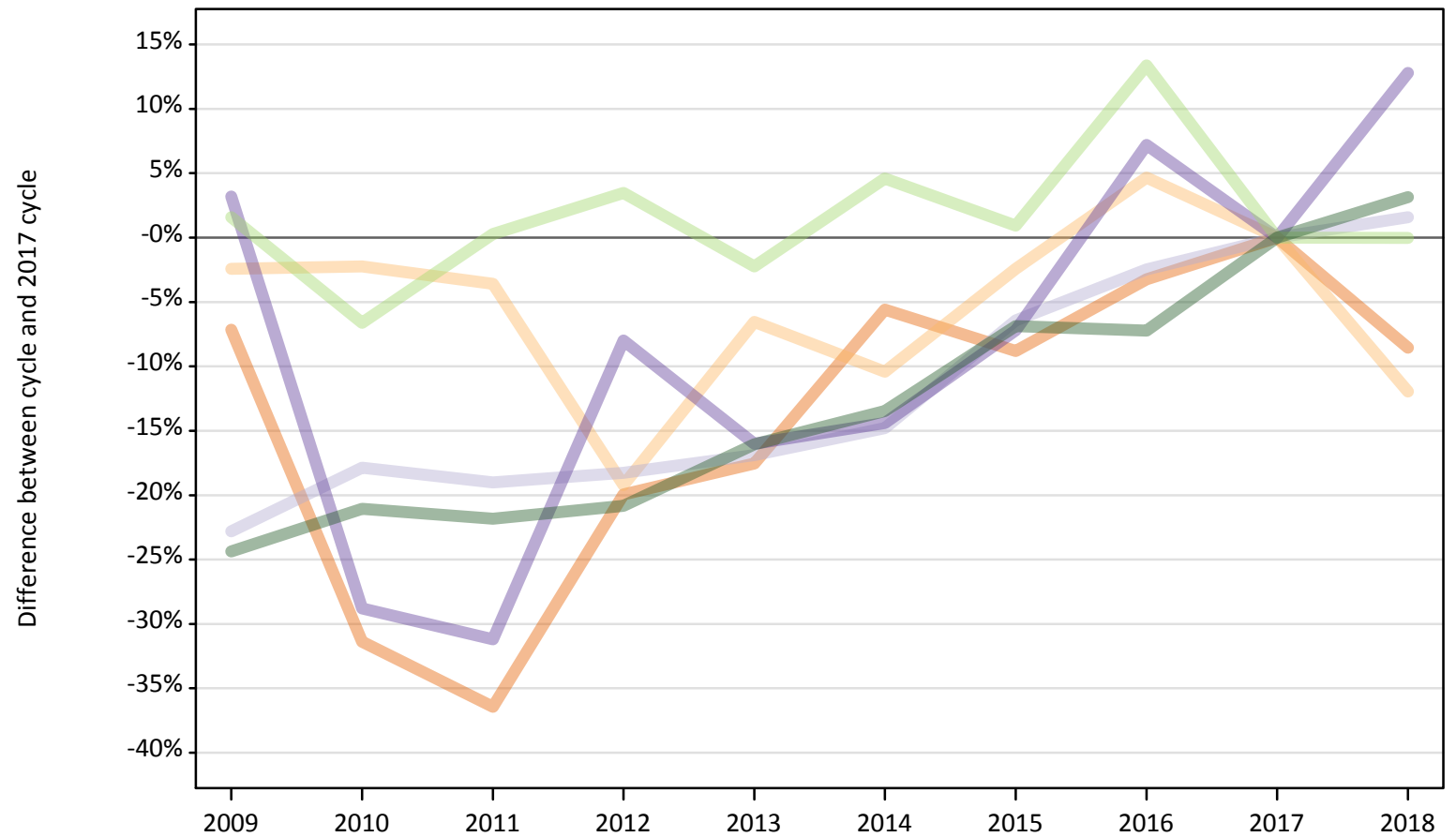
Domicile of applicant	2009	2010	2011	2012	2013	2014	2015	2016	2017	2018
England	-19%	-34%	-26%	-23%	-22%	34%	72%	-5%	0%	-5%
Northern Ireland	1%	-2%	-6%	-5%	6%	6%	-3%	4%	0%	-3%
Scotland	-45%	-26%	-42%	-16%	-58%	-45%	-35%	-42%	0%	-16%
Wales	-7%	-50%	-50%		-64%	-43%	-7%	-21%	0%	-29%
EU (excluding UK)	35%	69%	24%	17%	24%	30%	15%	-2%	0%	6%
Not EU	-70%	-69%	-45%	-19%	-13%	-13%	-19%	8%	0%	29%

Note: The percentage change is not recorded in the above table for groups with fewer than 10 placed applicants in that cycle or in the 2017 cycle.

### B.10 Placed applicants at 12 days after A level results day: providers in Scotland

Selected applicant domiciles: difference between cycle and 2017 cycle (at 12 days after A level results day)

- England
- Northern Ireland
- Scotland
- Wales
- EU (excluding UK)
- Not EU



Note: The percentage change is not plotted in the above chart for groups with fewer than 30 placed applicants in any one cycle.

**B.11 Placed applicants at 12 days after A level results day: providers in Scotland**

Placed applicants by domicile (at 12 days after A level results day)

Domicile of applicant	2009	2010	2011	2012	2013	2014	2015	2016	2017	2018
England	4,670	3,450	3,190	4,020	4,140	4,740	4,580	4,860	5,020	4,600
Northern Ireland	1,090	1,090	1,070	900	1,040	1,000	1,090	1,170	1,110	980
Scotland	24,990	26,590	26,220	26,460	26,910	27,580	30,300	31,580	32,380	32,890
Wales	130	90	90	120	110	110	120	130	130	140
EU (excluding UK)	4,100	3,770	4,040	4,170	3,940	4,220	4,070	4,570	4,030	4,030
Not EU	2,160	2,250	2,230	2,260	2,400	2,470	2,660	2,650	2,850	2,940

**B.12 Placed applicants at 12 days after A level results day: providers in Scotland**

Selected applicant domiciles: difference between cycle and 2017 cycle (at 12 days after A level results day)

Domicile of applicant	2009	2010	2011	2012	2013	2014	2015	2016	2017	2018
England	-7%	-31%	-36%	-20%	-18%	-6%	-9%	-3%	0%	-9%
Northern Ireland	-2%	-2%	-4%	-19%	-7%	-10%	-2%	5%	0%	-12%
Scotland	-23%	-18%	-19%	-18%	-17%	-15%	-6%	-2%	0%	2%
Wales	3%	-29%	-31%	-8%	-16%	-14%	-7%	7%	0%	13%
EU (excluding UK)	2%	-7%	0%	3%	-2%	5%	1%	13%	0%	-0%
Not EU	-24%	-21%	-22%	-21%	-16%	-13%	-7%	-7%	0%	3%

Note: The percentage change is not recorded in the above table for groups with fewer than 10 placed applicants in that cycle or in the 2017 cycle.



### B.13 Placed applicants at 12 days after A level results day: providers in Wales

Selected applicant domiciles: difference between cycle and 2017 cycle (at 12 days after A level results day)

- England
- Northern Ireland
- Scotland
- Wales
- EU (excluding UK)
- Not EU



Note: The percentage change is not plotted in the above chart for groups with fewer than 30 placed applicants in any one cycle.

**B.14 Placed applicants at 12 days after A level results day: providers in Wales**

Placed applicants by domicile (at 12 days after A level results day)

Domicile of applicant	2009	2010	2011	2012	2013	2014	2015	2016	2017	2018
England	9,250	10,010	11,050	9,270	10,170	10,470	10,310	10,630	10,390	9,820
Northern Ireland	110	160	200	140	160	150	170	180	170	140
Scotland	50	50	70	50	60	60	50	40	50	40
Wales	12,460	10,850	10,630	10,370	10,490	10,580	10,700	10,770	10,580	10,380
EU (excluding UK)	850	850	850	860	920	1,000	1,200	1,330	1,400	1,090
Not EU	850	780	970	1,030	1,140	1,220	1,130	1,090	1,060	1,000

**B.15 Placed applicants at 12 days after A level results day: providers in Wales**

Selected applicant domiciles: difference between cycle and 2017 cycle (at 12 days after A level results day)

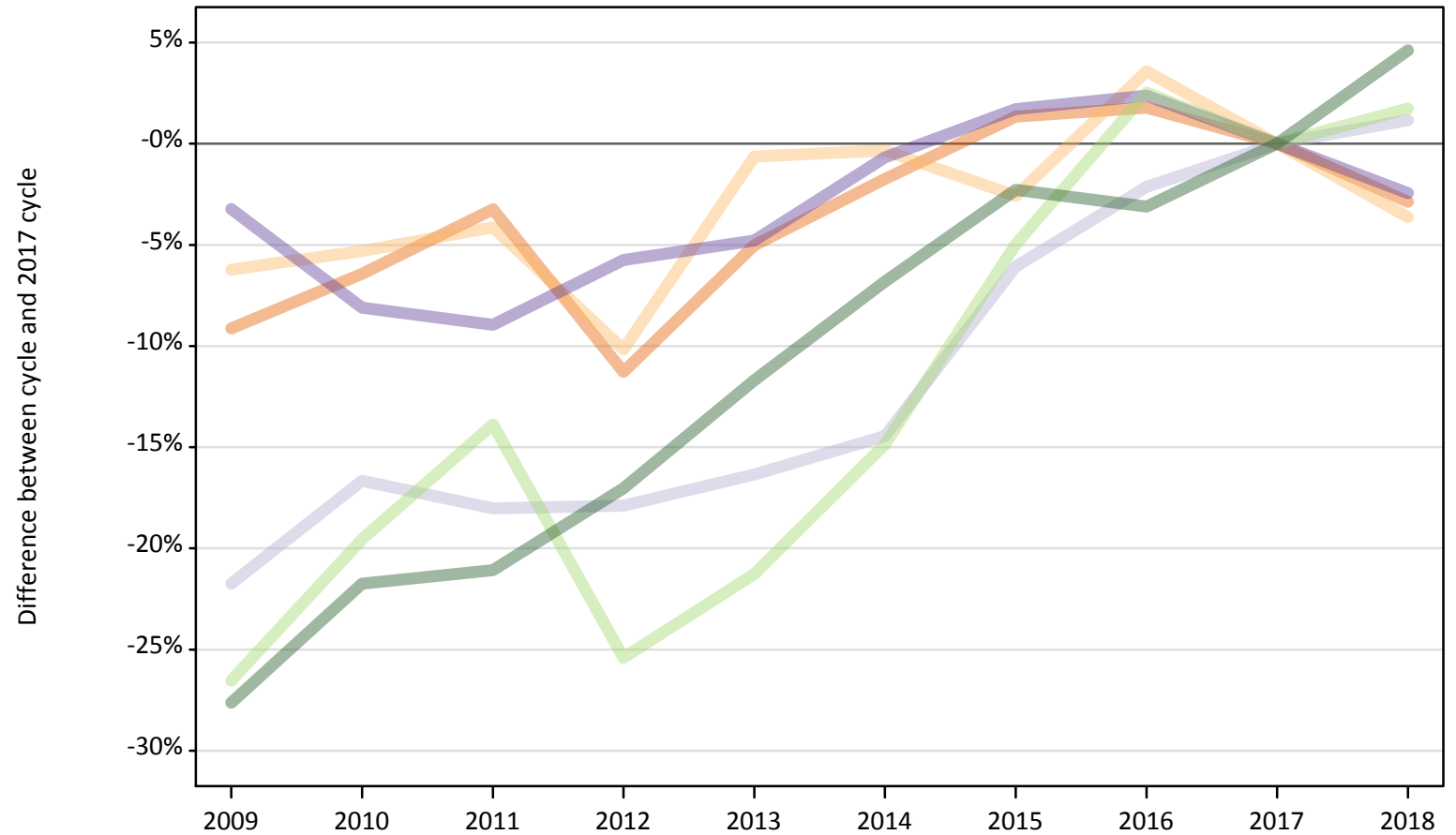
Domicile of applicant	2009	2010	2011	2012	2013	2014	2015	2016	2017	2018
England	-11%	-4%	6%	-11%	-2%	1%	-1%	2%	0%	-5%
Northern Ireland	-35%	-9%	17%	-22%	-9%	-12%	-2%	6%	0%	-17%
Scotland	-6%	2%	40%	6%	33%	29%	-2%	-10%	0%	-13%
Wales	18%	3%	0%	-2%	-1%	-0%	1%	2%	0%	-2%
EU (excluding UK)	-39%	-40%	-39%	-39%	-35%	-29%	-15%	-5%	0%	-22%
Not EU	-20%	-26%	-9%	-3%	7%	14%	6%	3%	0%	-6%

Note: The percentage change is not recorded in the above table for groups with fewer than 10 placed applicants in that cycle or in the 2017 cycle.

### B.16 Placed applicants at 12 days after A level results day: providers in the UK

Selected applicant domiciles: difference between cycle and 2017 cycle (at 12 days after A level results day)

- England
- Northern Ireland
- Scotland
- Wales
- EU (excluding UK)
- Not EU



Note: The percentage change is not plotted in the above chart for groups with fewer than 30 placed applicants in any one cycle.

**B.17 Placed applicants at 12 days after A level results day: providers in the UK**

Placed applicants by domicile (at 12 days after A level results day)

Domicile of applicant	2009	2010	2011	2012	2013	2014	2015	2016	2017	2018
England	323,850	333,490	344,850	316,220	338,490	350,140	361,150	362,720	356,380	346,160
Northern Ireland	13,220	13,340	13,510	12,660	14,000	14,040	13,730	14,600	14,090	13,580
Scotland	26,630	28,360	27,890	27,940	28,460	29,110	31,960	33,300	34,020	34,420
Wales	18,090	17,180	17,020	17,620	17,800	18,570	19,010	19,140	18,690	18,240
EU (excluding UK)	21,110	23,120	24,750	21,430	22,620	24,460	27,300	29,460	28,730	29,230
Not EU	25,310	27,370	27,600	29,020	30,880	32,590	34,180	33,890	34,970	36,590

**B.18 Placed applicants at 12 days after A level results day: providers in the UK**

Selected applicant domiciles: difference between cycle and 2017 cycle (at 12 days after A level results day)

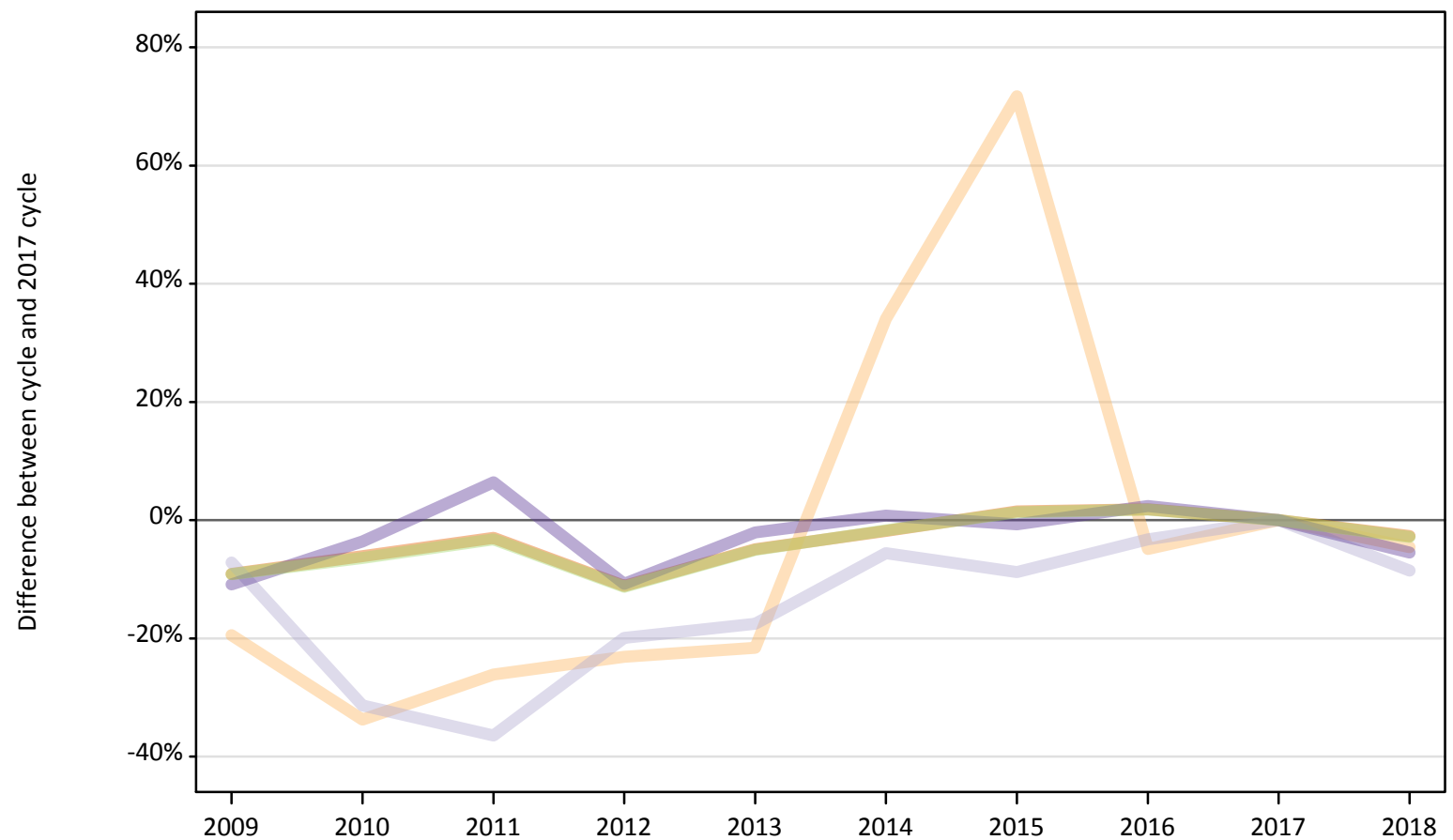
Domicile of applicant	2009	2010	2011	2012	2013	2014	2015	2016	2017	2018
England	-9%	-6%	-3%	-11%	-5%	-2%	1%	2%	0%	-3%
Northern Ireland	-6%	-5%	-4%	-10%	-1%	-0%	-3%	4%	0%	-4%
Scotland	-22%	-17%	-18%	-18%	-16%	-14%	-6%	-2%	0%	1%
Wales	-3%	-8%	-9%	-6%	-5%	-1%	2%	2%	0%	-2%
EU (excluding UK)	-27%	-20%	-14%	-25%	-21%	-15%	-5%	3%	0%	2%
Not EU	-28%	-22%	-21%	-17%	-12%	-7%	-2%	-3%	0%	5%

Note: The percentage change is not recorded in the above table for groups with fewer than 10 placed applicants in that cycle or in the 2017 cycle.

### B.19 Placed applicants at 12 days after A level results day: domiciled in England

Selected provider countries: difference between cycle and 2017 cycle (at 12 days after A level results day)

- England
- Northern Ireland
- Scotland
- Wales
- UK



Note: The percentage change is not plotted in the above chart for groups with fewer than 30 placed applicants in any one cycle.

**B.20 Placed applicants at 12 days after A level results day: domiciled in England**

Placed applicants by provider country (at 12 days after A level results day)

Country of provider	2009	2010	2011	2012	2013	2014	2015	2016	2017	2018
England	309,660	319,820	330,360	302,680	323,920	334,490	345,690	346,910	340,640	331,430
Northern Ireland	270	220	240	250	260	440	570	310	330	310
Scotland	4,670	3,450	3,190	4,020	4,140	4,740	4,580	4,860	5,020	4,600
Wales	9,250	10,010	11,050	9,270	10,170	10,470	10,310	10,630	10,390	9,820
UK	323,850	333,490	344,850	316,220	338,490	350,140	361,150	362,720	356,380	346,160

**B.21 Placed applicants at 12 days after A level results day: domiciled in England**

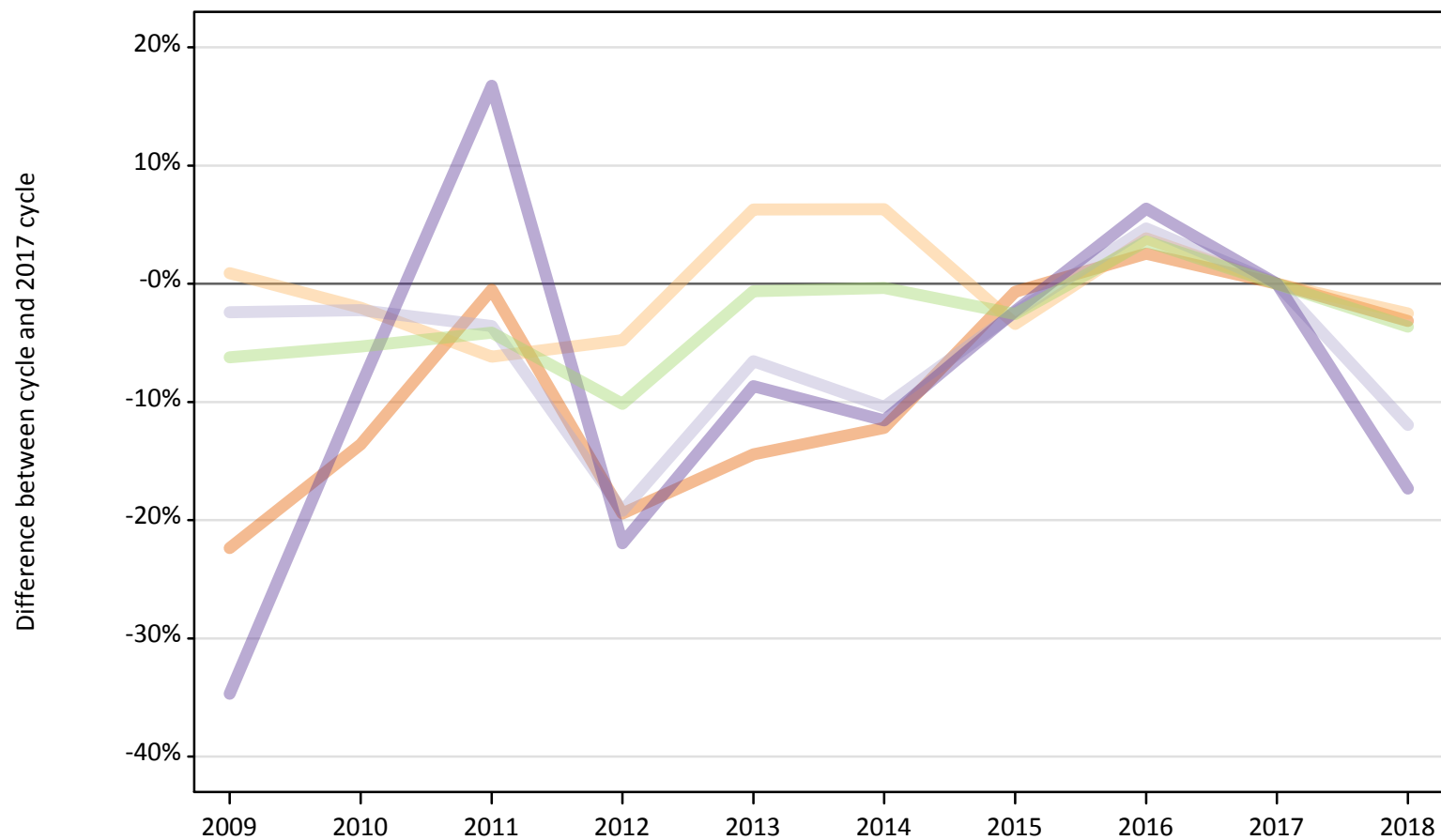
Selected provider countries: difference between cycle and 2017 cycle (at 12 days after A level results day)

Country of provider	2009	2010	2011	2012	2013	2014	2015	2016	2017	2018
England	-9%	-6%	-3%	-11%	-5%	-2%	1%	2%	0%	-3%
Northern Ireland	-19%	-34%	-26%	-23%	-22%	34%	72%	-5%	0%	-5%
Scotland	-7%	-31%	-36%	-20%	-18%	-6%	-9%	-3%	0%	-9%
Wales	-11%	-4%	6%	-11%	-2%	1%	-1%	2%	0%	-5%
UK	-9%	-6%	-3%	-11%	-5%	-2%	1%	2%	0%	-3%

Note: The percentage change is not recorded in the above table for groups with fewer than 10 placed applicants in that cycle or in the 2017 cycle.

**B.22 Placed applicants at 12 days after A level results day: domiciled in Northern Ireland**  
Selected provider countries: difference between cycle and 2017 cycle (at 12 days after A level results day)

- England
- Northern Ireland
- Scotland
- Wales
- UK



Note: The percentage change is not plotted in the above chart for groups with fewer than 30 placed applicants in any one cycle.

**B.23 Placed applicants at 12 days after A level results day: domiciled in Northern Ireland**

Placed applicants by provider country (at 12 days after A level results day)

Country of provider	2009	2010	2011	2012	2013	2014	2015	2016	2017	2018
England	3,020	3,360	3,860	3,130	3,320	3,410	3,860	3,980	3,880	3,760
Northern Ireland	9,000	8,740	8,370	8,500	9,480	9,480	8,620	9,260	8,920	8,700
Scotland	1,090	1,090	1,070	900	1,040	1,000	1,090	1,170	1,110	980
Wales	110	160	200	140	160	150	170	180	170	140
UK	13,220	13,340	13,510	12,660	14,000	14,040	13,730	14,600	14,090	13,580

**B.24 Placed applicants at 12 days after A level results day: domiciled in Northern Ireland**

Selected provider countries: difference between cycle and 2017 cycle (at 12 days after A level results day)

Country of provider	2009	2010	2011	2012	2013	2014	2015	2016	2017	2018
England	-22%	-14%	-1%	-19%	-14%	-12%	-1%	3%	0%	-3%
Northern Ireland	1%	-2%	-6%	-5%	6%	6%	-3%	4%	0%	-3%
Scotland	-2%	-2%	-4%	-19%	-7%	-10%	-2%	5%	0%	-12%
Wales	-35%	-9%	17%	-22%	-9%	-12%	-2%	6%	0%	-17%
UK	-6%	-5%	-4%	-10%	-1%	-0%	-3%	4%	0%	-4%

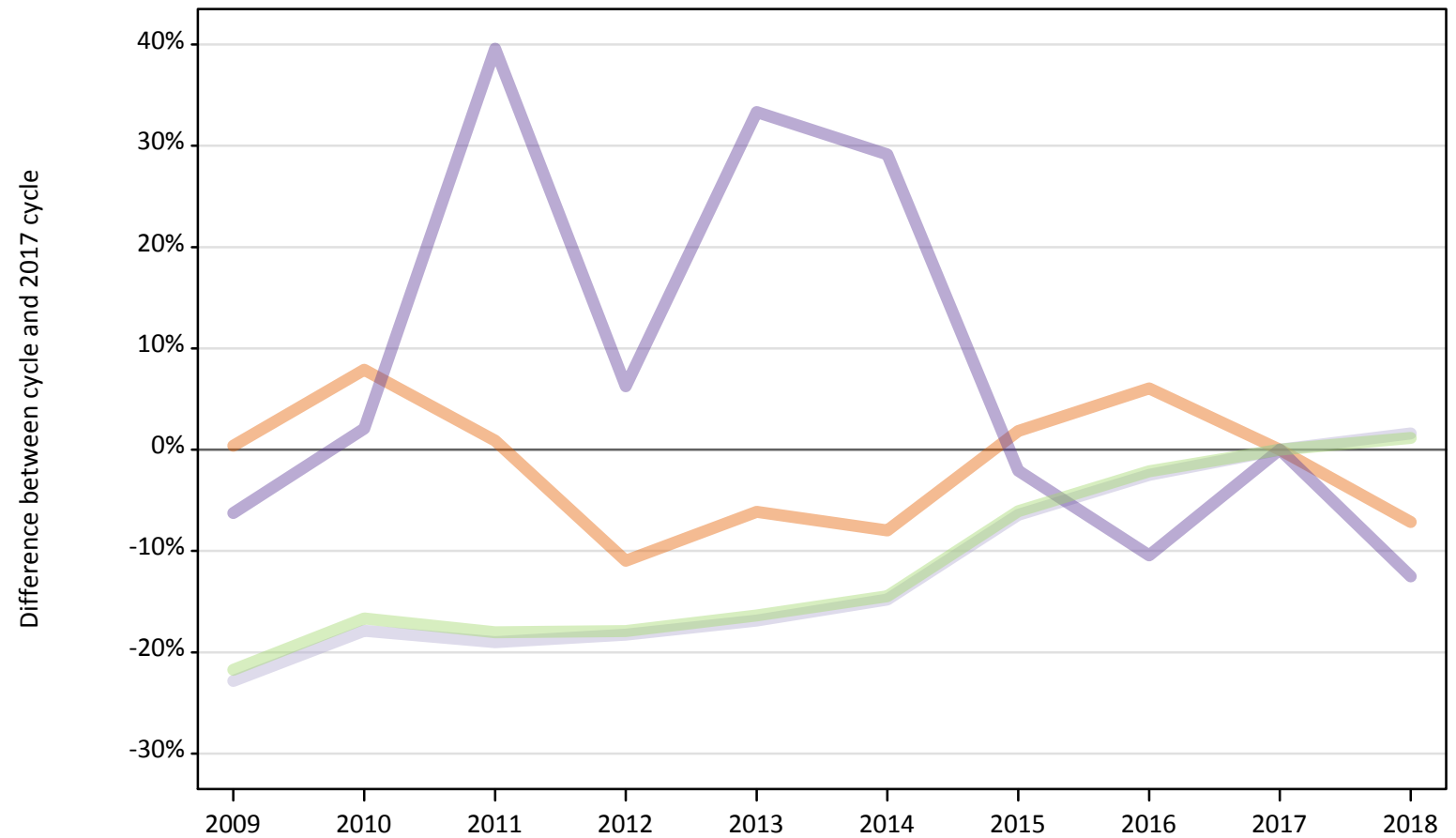
Note: The percentage change is not recorded in the above table for groups with fewer than 10 placed applicants in that cycle or in the 2017 cycle.



## B.25 Placed applicants at 12 days after A level results day: domiciled in Scotland

Selected provider countries: difference between cycle and 2017 cycle (at 12 days after A level results day)

- England
- Northern Ireland
- Scotland
- Wales
- UK



Note: The percentage change is not plotted in the above chart for groups with fewer than 30 placed applicants in any one cycle.

**B.26 Placed applicants at 12 days after A level results day: domiciled in Scotland**

Placed applicants by provider country (at 12 days after A level results day)

Country of provider	2009	2010	2011	2012	2013	2014	2015	2016	2017	2018
England	1,580	1,690	1,580	1,400	1,470	1,440	1,600	1,660	1,570	1,460
Northern Ireland	20	20	20	30	10	20	20	20	30	30
Scotland	24,990	26,590	26,220	26,460	26,910	27,580	30,300	31,580	32,380	32,890
Wales	50	50	70	50	60	60	50	40	50	40
UK	26,630	28,360	27,890	27,940	28,460	29,110	31,960	33,300	34,020	34,420

**B.27 Placed applicants at 12 days after A level results day: domiciled in Scotland**

Selected provider countries: difference between cycle and 2017 cycle (at 12 days after A level results day)

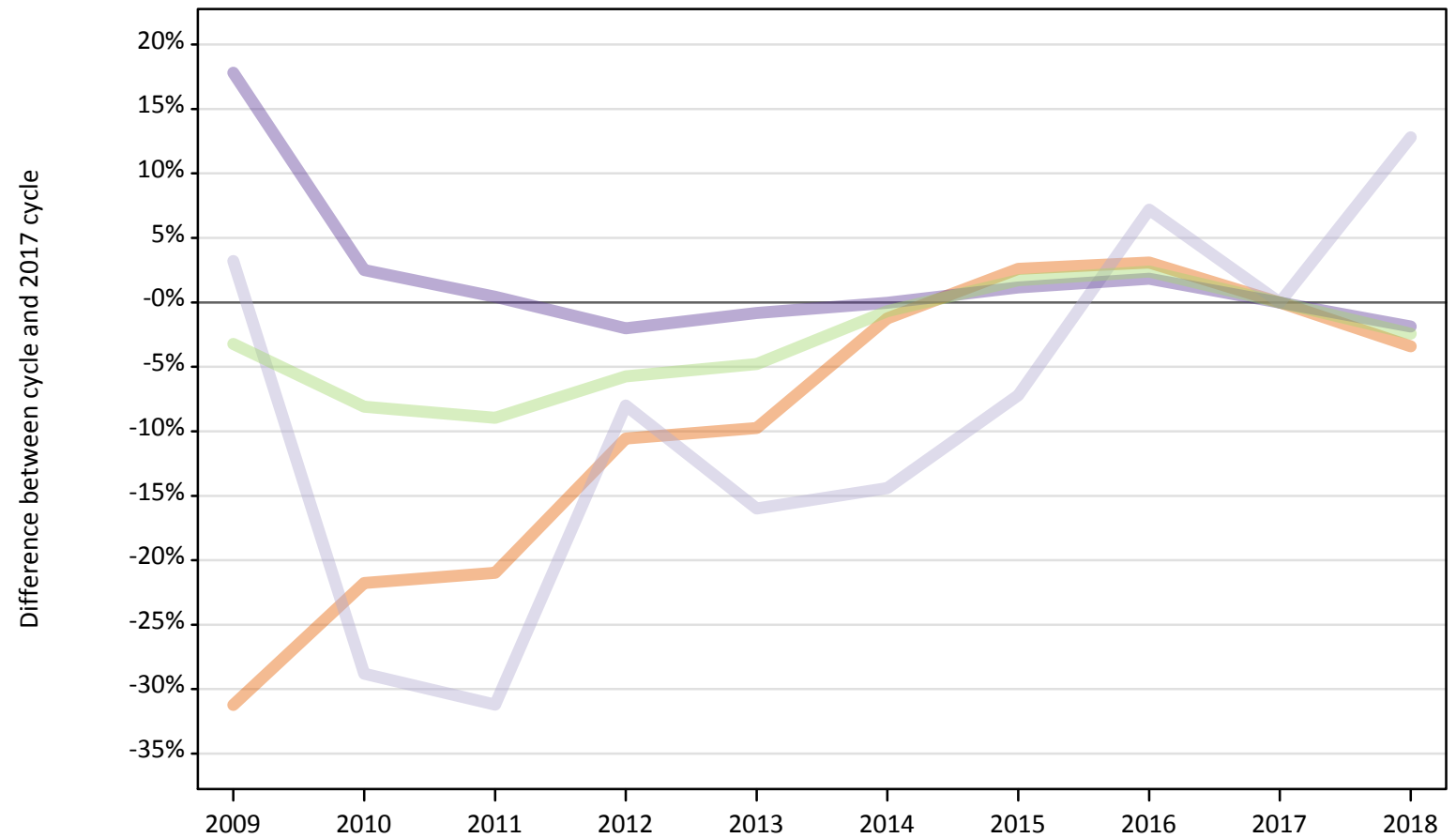
Country of provider	2009	2010	2011	2012	2013	2014	2015	2016	2017	2018
England	0%	8%	1%	-11%	-6%	-8%	2%	6%	0%	-7%
Northern Ireland	-45%	-26%	-42%	-16%	-58%	-45%	-35%	-42%	0%	-16%
Scotland	-23%	-18%	-19%	-18%	-17%	-15%	-6%	-2%	0%	2%
Wales	-6%	2%	40%	6%	33%	29%	-2%	-10%	0%	-13%
UK	-22%	-17%	-18%	-18%	-16%	-14%	-6%	-2%	0%	1%

Note: The percentage change is not recorded in the above table for groups with fewer than 10 placed applicants in that cycle or in the 2017 cycle.

## B.28 Placed applicants at 12 days after A level results day: domiciled in Wales

Selected provider countries: difference between cycle and 2017 cycle (at 12 days after A level results day)

- England
- Northern Ireland
- Scotland
- Wales
- UK



Note: The percentage change is not plotted in the above chart for groups with fewer than 30 placed applicants in any one cycle.

**B.29 Placed applicants at 12 days after A level results day: domiciled in Wales**

Placed applicants by provider country (at 12 days after A level results day)

Country of provider	2009	2010	2011	2012	2013	2014	2015	2016	2017	2018
England	5,490	6,240	6,300	7,130	7,200	7,880	8,180	8,220	7,980	7,700
Northern Ireland	10	10	10	0	10	10	10	10	10	10
Scotland	130	90	90	120	110	110	120	130	130	140
Wales	12,460	10,850	10,630	10,370	10,490	10,580	10,700	10,770	10,580	10,380
UK	18,090	17,180	17,020	17,620	17,800	18,570	19,010	19,140	18,690	18,240

**B.30 Placed applicants at 12 days after A level results day: domiciled in Wales**

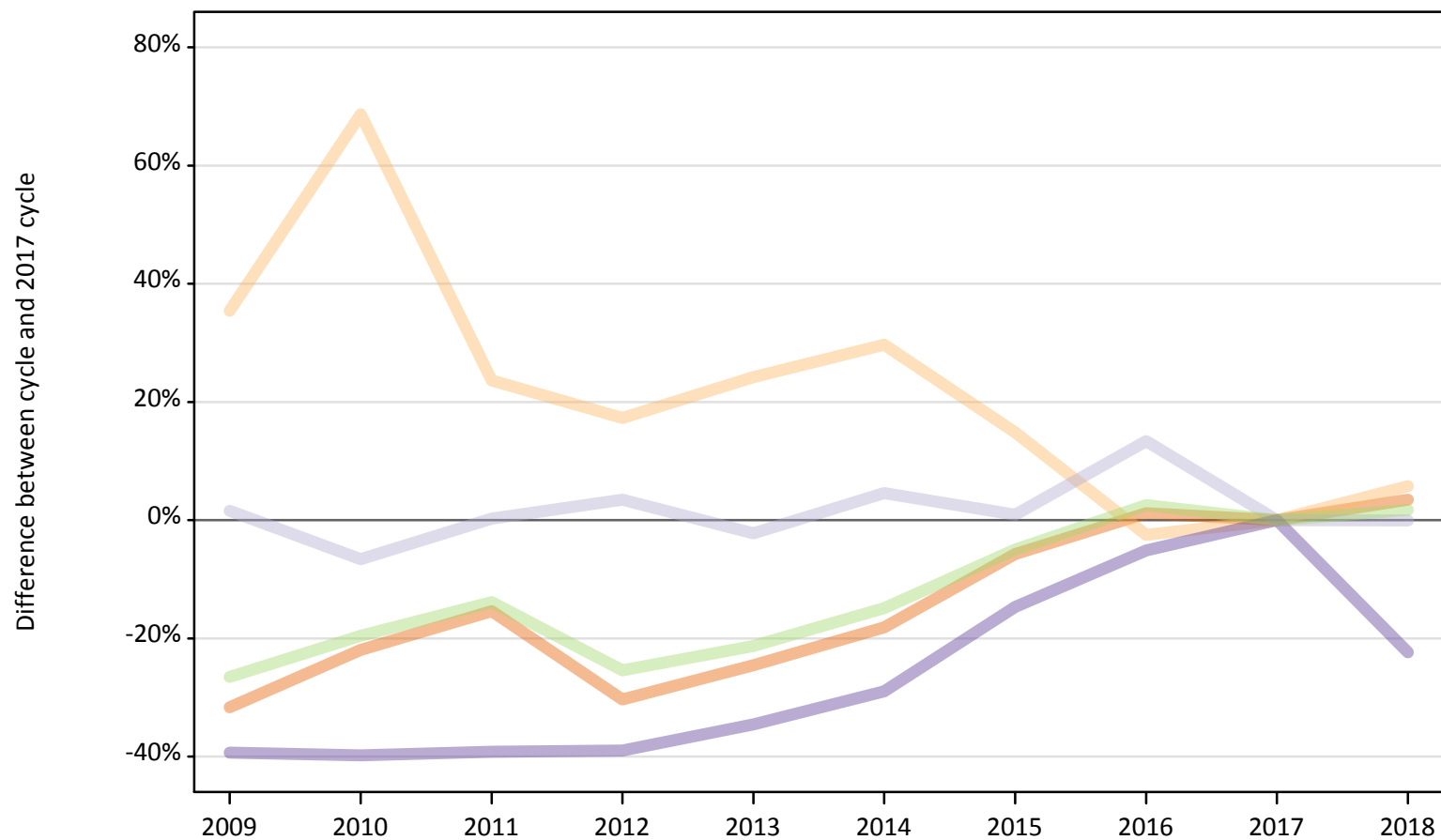
Selected provider countries: difference between cycle and 2017 cycle (at 12 days after A level results day)

Country of provider	2009	2010	2011	2012	2013	2014	2015	2016	2017	2018
England	-31%	-22%	-21%	-11%	-10%	-1%	3%	3%	0%	-3%
Northern Ireland	-7%	-50%	-50%		-64%	-43%	-7%	-21%	0%	-29%
Scotland	3%	-29%	-31%	-8%	-16%	-14%	-7%	7%	0%	13%
Wales	18%	3%	0%	-2%	-1%	-0%	1%	2%	0%	-2%
UK	-3%	-8%	-9%	-6%	-5%	-1%	2%	2%	0%	-2%

Note: The percentage change is not recorded in the above table for groups with fewer than 10 placed applicants in that cycle or in the 2017 cycle.

**B.31 Placed applicants at 12 days after A level results day: domiciled in EU (excluding UK)**  
Selected provider countries: difference between cycle and 2017 cycle (at 12 days after A level results day)

- England
- Northern Ireland
- Scotland
- Wales
- UK



Note: The percentage change is not plotted in the above chart for groups with fewer than 30 placed applicants in any one cycle.

### B.32 Placed applicants at 12 days after A level results day: domiciled in EU (excluding UK)

Placed applicants by provider country (at 12 days after A level results day)

Country of provider	2009	2010	2011	2012	2013	2014	2015	2016	2017	2018
England	15,670	17,890	19,400	15,980	17,310	18,770	21,620	23,200	22,930	23,730
Northern Ireland	490	610	450	430	450	470	420	360	360	390
Scotland	4,100	3,770	4,040	4,170	3,940	4,220	4,070	4,570	4,030	4,030
Wales	850	850	850	860	920	1,000	1,200	1,330	1,400	1,090
UK	21,110	23,120	24,750	21,430	22,620	24,460	27,300	29,460	28,730	29,230

### B.33 Placed applicants at 12 days after A level results day: domiciled in EU (excluding UK)

Selected provider countries: difference between cycle and 2017 cycle (at 12 days after A level results day)

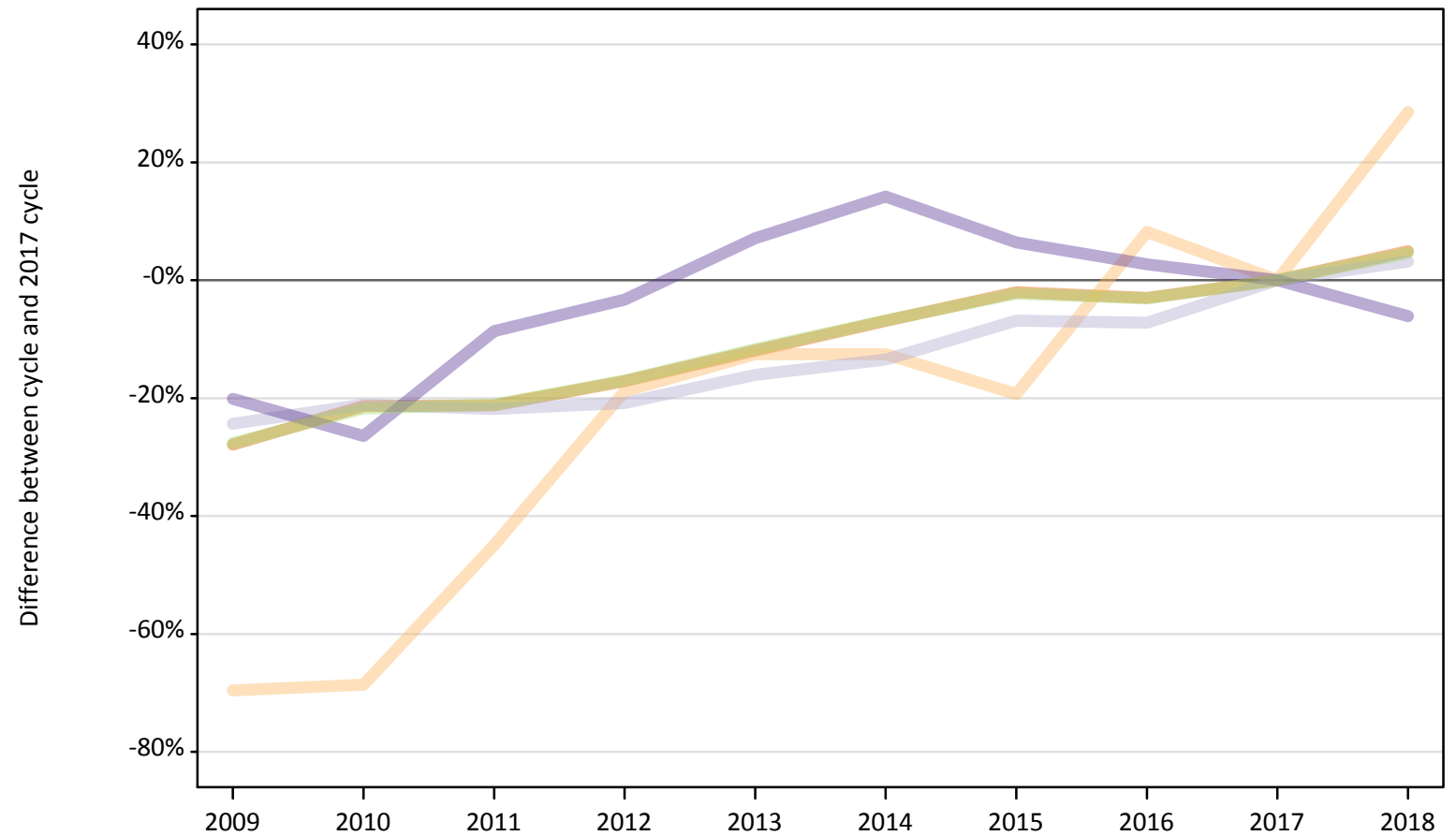
Country of provider	2009	2010	2011	2012	2013	2014	2015	2016	2017	2018
England	-32%	-22%	-15%	-30%	-25%	-18%	-6%	1%	0%	3%
Northern Ireland	35%	69%	24%	17%	24%	30%	15%	-2%	0%	6%
Scotland	2%	-7%	0%	3%	-2%	5%	1%	13%	0%	-0%
Wales	-39%	-40%	-39%	-39%	-35%	-29%	-15%	-5%	0%	-22%
UK	-27%	-20%	-14%	-25%	-21%	-15%	-5%	3%	0%	2%

Note: The percentage change is not recorded in the above table for groups with fewer than 10 placed applicants in that cycle or in the 2017 cycle.

### B.34 Placed applicants at 12 days after A level results day: domiciled in Not EU

Selected provider countries: difference between cycle and 2017 cycle (at 12 days after A level results day)

- England
- Northern Ireland
- Scotland
- Wales
- UK



Note: The percentage change is not plotted in the above chart for groups with fewer than 30 placed applicants in any one cycle.

### B.35 Placed applicants at 12 days after A level results day: domiciled in Not EU

Placed applicants by provider country (at 12 days after A level results day)

Country of provider	2009	2010	2011	2012	2013	2014	2015	2016	2017	2018
England	22,240	24,270	24,290	25,560	27,170	28,720	30,220	29,920	30,850	32,380
Northern Ireland	60	70	110	170	180	180	170	220	210	270
Scotland	2,160	2,250	2,230	2,260	2,400	2,470	2,660	2,650	2,850	2,940
Wales	850	780	970	1,030	1,140	1,220	1,130	1,090	1,060	1,000
UK	25,310	27,370	27,600	29,020	30,880	32,590	34,180	33,890	34,970	36,590

### B.36 Placed applicants at 12 days after A level results day: domiciled in Not EU

Selected provider countries: difference between cycle and 2017 cycle (at 12 days after A level results day)

Country of provider	2009	2010	2011	2012	2013	2014	2015	2016	2017	2018
England	-28%	-21%	-21%	-17%	-12%	-7%	-2%	-3%	0%	5%
Northern Ireland	-70%	-69%	-45%	-19%	-13%	-13%	-19%	8%	0%	29%
Scotland	-24%	-21%	-22%	-21%	-16%	-13%	-7%	-7%	0%	3%
Wales	-20%	-26%	-9%	-3%	7%	14%	6%	3%	0%	-6%
UK	-28%	-22%	-21%	-17%	-12%	-7%	-2%	-3%	0%	5%

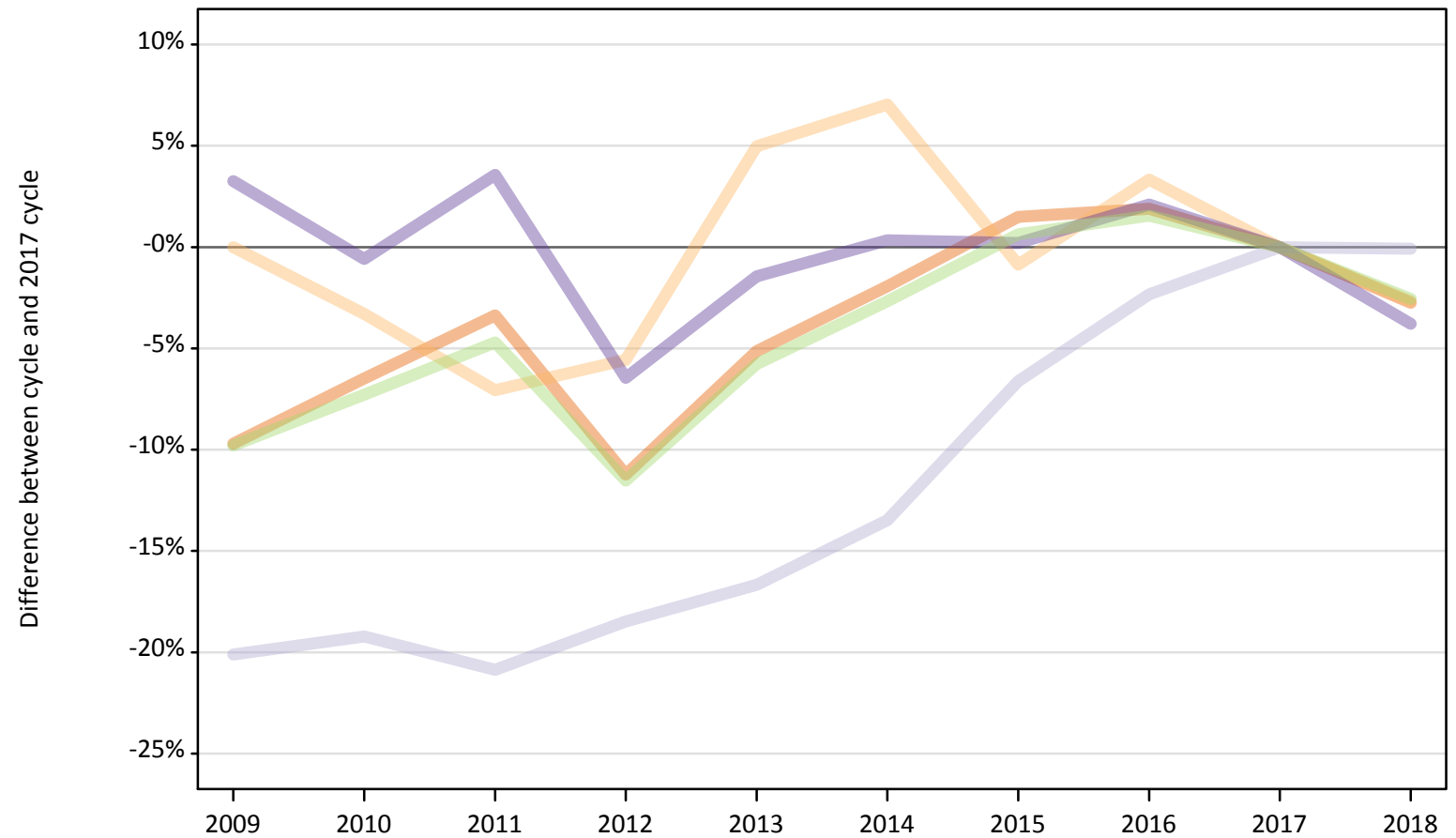
Note: The percentage change is not recorded in the above table for groups with fewer than 10 placed applicants in that cycle or in the 2017 cycle.



### B.37 Placed applicants at 12 days after A level results day: domiciled in UK

Selected provider countries: difference between cycle and 2017 cycle (at 12 days after A level results day)

- England
- Northern Ireland
- Scotland
- Wales
- UK



Note: The percentage change is not plotted in the above chart for groups with fewer than 30 placed applicants in any one cycle.

**B.38 Placed applicants at 12 days after A level results day: domiciled in UK**

Placed applicants by provider country (at 12 days after A level results day)

Country of provider	2009	2010	2011	2012	2013	2014	2015	2016	2017	2018
England	319,740	331,110	342,110	314,340	335,910	347,220	359,330	360,780	354,060	344,360
Northern Ireland	9,300	8,990	8,640	8,780	9,760	9,950	9,220	9,610	9,300	9,050
Scotland	30,870	31,220	30,580	31,500	32,200	33,430	36,080	37,740	38,640	38,610
Wales	21,880	21,060	21,940	19,820	20,880	21,260	21,230	21,630	21,190	20,390
UK	381,780	392,370	403,270	374,430	398,750	411,860	425,850	429,750	423,190	412,400

**B.39 Placed applicants at 12 days after A level results day: domiciled in UK**

Selected provider countries: difference between cycle and 2017 cycle (at 12 days after A level results day)

Country of provider	2009	2010	2011	2012	2013	2014	2015	2016	2017	2018
England	-10%	-6%	-3%	-11%	-5%	-2%	1%	2%	0%	-3%
Northern Ireland	0%	-3%	-7%	-6%	5%	7%	-1%	3%	0%	-3%
Scotland	-20%	-19%	-21%	-18%	-17%	-13%	-7%	-2%	0%	-0%
Wales	3%	-1%	4%	-6%	-1%	0%	0%	2%	0%	-4%
UK	-10%	-7%	-5%	-12%	-6%	-3%	1%	2%	0%	-3%

Note: The percentage change is not recorded in the above table for groups with fewer than 10 placed applicants in that cycle or in the 2017 cycle.