

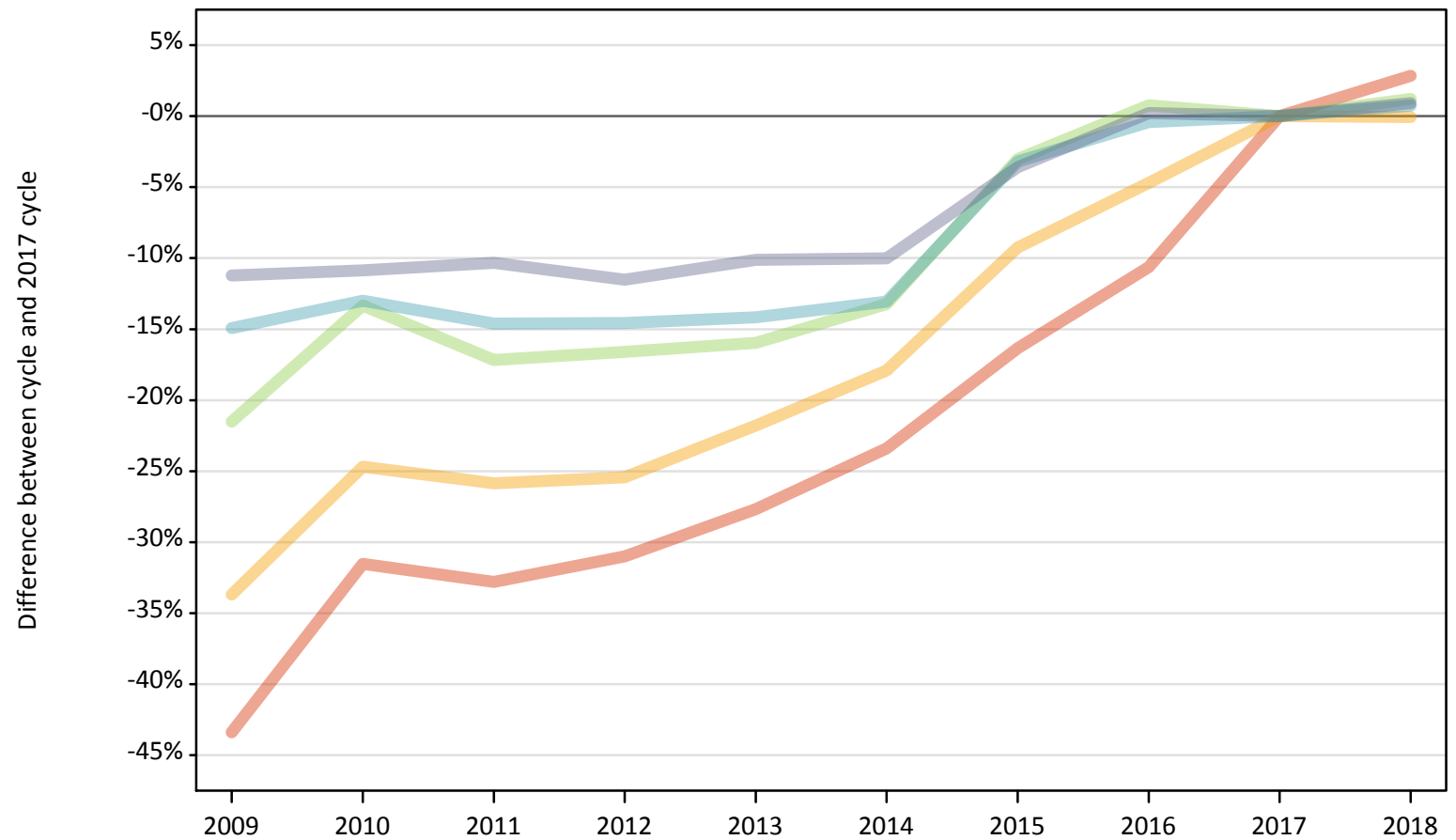
Daily Clearing Analysis: SIMD16

Analysis at 00:05 on Tuesday 28 August 2018 (12 days after A level results day)

J.1 Placed applicants from Scotland by SIMD16 quintile: 12 days after A level results day

Placed applicants: change relative to 2017 cycle totals

- Quintile 1
- Quintile 2
- Quintile 3
- Quintile 4
- Quintile 5



Note: The percentage change is not plotted in the above chart for groups with fewer than 30 placed applicants in any one cycle.

J.2 Placed applicants from Scotland by SIMD16 quintile: 12 days after A level results day

Applicant Status	SIMD16	2009	2010	2011	2012	2013	2014	2015	2016	2017	2018
Placed	Quintile 1	2,800	3,380	3,320	3,410	3,570	3,780	4,130	4,410	4,940	5,080
	Quintile 2	3,570	4,050	3,990	4,010	4,210	4,410	4,880	5,130	5,380	5,370
	Quintile 3	4,850	5,360	5,120	5,160	5,200	5,370	6,000	6,230	6,180	6,260
	Quintile 4	6,520	6,670	6,550	6,550	6,580	6,670	7,420	7,640	7,670	7,720
	Quintile 5	8,680	8,720	8,770	8,650	8,790	8,800	9,430	9,800	9,780	9,870

J.3 Placed applicants from Scotland by SIMD16 quintile: 12 days after A level results day

Placed applicants: change relative to 2017 cycle totals

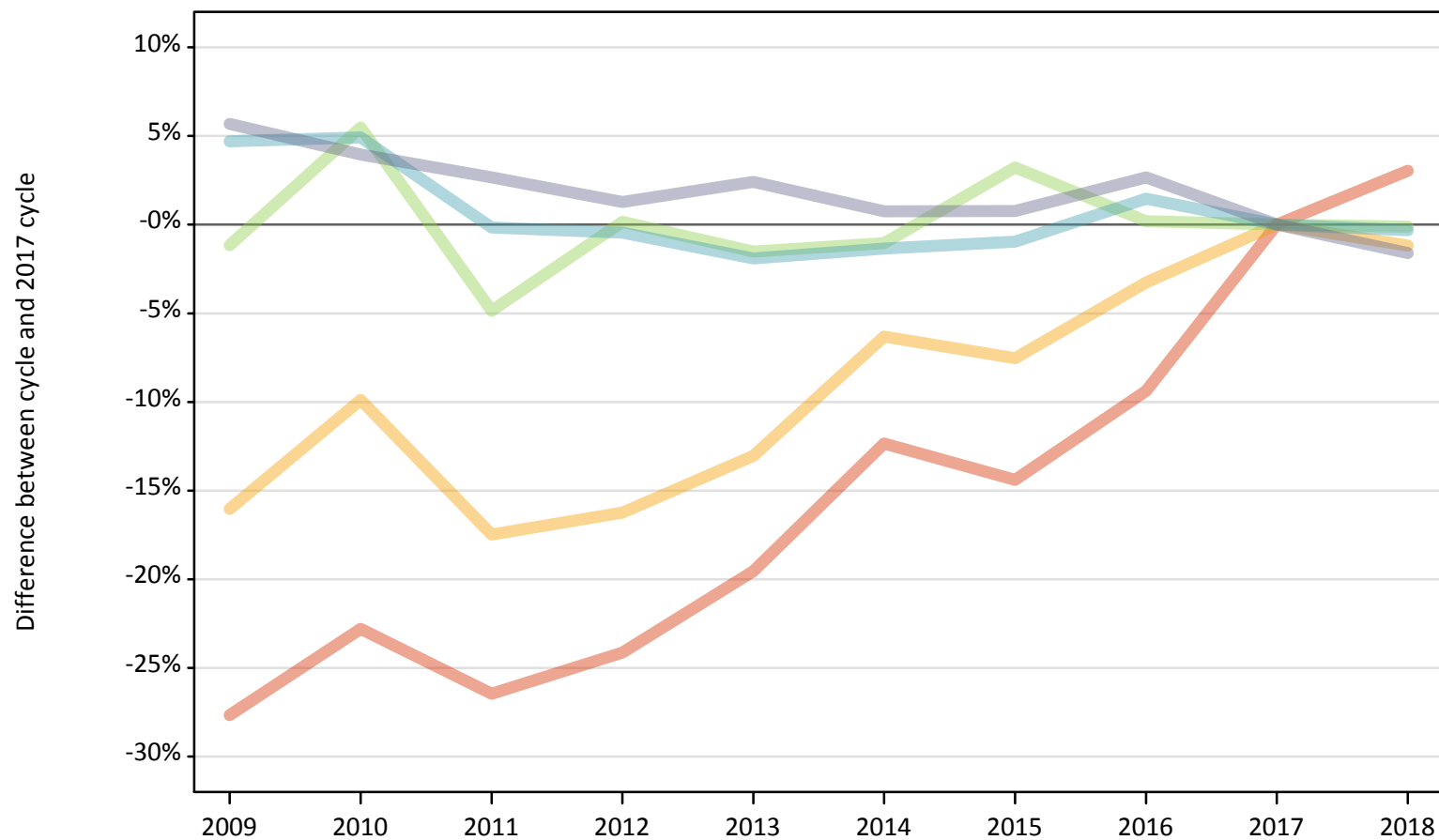
Applicant Status	SIMD16	2009	2010	2011	2012	2013	2014	2015	2016	2017	2018
Placed	Quintile 1	-43%	-32%	-33%	-31%	-28%	-23%	-16%	-11%	0%	3%
	Quintile 2	-34%	-25%	-26%	-25%	-22%	-18%	-9%	-5%	0%	-0%
	Quintile 3	-22%	-13%	-17%	-17%	-16%	-13%	-3%	1%	0%	1%
	Quintile 4	-15%	-13%	-15%	-15%	-14%	-13%	-3%	-0%	0%	1%
	Quintile 5	-11%	-11%	-10%	-12%	-10%	-10%	-4%	0%	0%	1%

Note: The percentage change is not recorded in the above table for groups with fewer than 10 placed applicants in that cycle or in the 2017 cycle.

J.4 Placed 18 year old applicants from Scotland by SIMD16 quintile: 12 days after A level results day

Placed 18 year old applicants: change relative to 2017 cycle totals

- Quintile 1
- Quintile 2
- Quintile 3
- Quintile 4
- Quintile 5



Note: The percentage change is not plotted in the above chart for groups with fewer than 30 placed applicants in any one cycle.

J.5 Placed 18 year old applicants from Scotland by SIMD16 quintile: 12 days after A level results day

Applicant Status	SIMD16	2009	2010	2011	2012	2013	2014	2015	2016	2017	2018
Placed	Quintile 1	1,030	1,090	1,040	1,080	1,140	1,240	1,210	1,280	1,420	1,460
	Quintile 2	1,650	1,770	1,620	1,640	1,710	1,840	1,820	1,900	1,960	1,940
	Quintile 3	2,550	2,720	2,450	2,580	2,540	2,550	2,660	2,580	2,580	2,570
	Quintile 4	3,740	3,750	3,570	3,560	3,500	3,520	3,540	3,620	3,570	3,560
	Quintile 5	5,390	5,310	5,240	5,170	5,230	5,140	5,140	5,240	5,100	5,020

J.6 Placed 18 year old applicants from Scotland by SIMD16 quintile: 12 days after A level results day

Placed 18 year old applicants: change relative to 2017 cycle totals

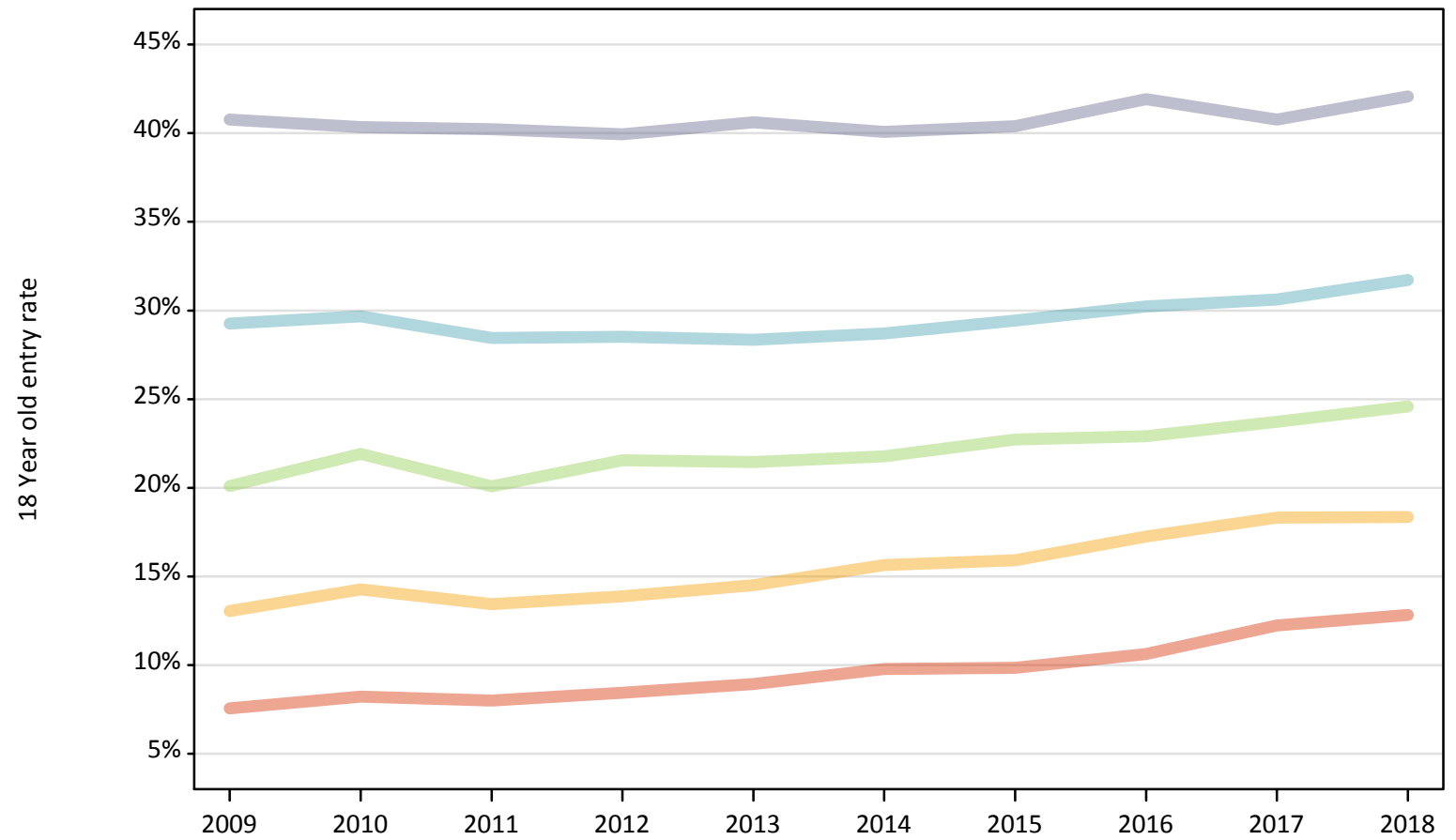
Applicant Status	SIMD16	2009	2010	2011	2012	2013	2014	2015	2016	2017	2018
Placed	Quintile 1	-28%	-23%	-26%	-24%	-20%	-12%	-14%	-9%	0%	3%
	Quintile 2	-16%	-10%	-17%	-16%	-13%	-6%	-8%	-3%	0%	-1%
	Quintile 3	-1%	5%	-5%	0%	-2%	-1%	3%	0%	0%	-0%
	Quintile 4	5%	5%	-0%	-0%	-2%	-1%	-1%	1%	0%	-0%
	Quintile 5	6%	4%	3%	1%	2%	1%	1%	3%	0%	-2%

Note: The percentage change is not recorded in the above table for groups with fewer than 10 placed applicants in that cycle or in the 2017 cycle.

J.7 Placed 18 year old applicants from Scotland by SIMD16 quintile: 12 days after A level results day

Placed 18 year old applicants: entry rate

- Quintile 1
- Quintile 2
- Quintile 3
- Quintile 4
- Quintile 5



J.8 Placed 18 year old applicants from Scotland by SIMD16 quintile: 12 days after A level results day

Placed 18 year old applicants: entry rate

Applicant Status	SIMD16	2009	2010	2011	2012	2013	2014	2015	2016	2017	2018
Placed	Quintile 1	7.6%	8.2%	8.0%	8.4%	8.9%	9.8%	9.8%	10.6%	12.2%	12.8%
	Quintile 2	13.0%	14.3%	13.4%	13.9%	14.5%	15.6%	15.9%	17.2%	18.3%	18.3%
	Quintile 3	20.1%	21.9%	20.1%	21.6%	21.5%	21.8%	22.7%	22.9%	23.7%	24.6%
	Quintile 4	29.3%	29.7%	28.4%	28.5%	28.3%	28.7%	29.4%	30.2%	30.6%	31.7%
	Quintile 5	40.8%	40.3%	40.2%	39.9%	40.6%	40.1%	40.4%	41.9%	40.8%	42.1%

J.9 Placed 18 year old applicants from Scotland by SIMD16 quintile: 12 days after A level results day

Placed 18 year old applicants: entry rate (indexed to 100 = Quintile 1)

Applicant Status	SIMD16	2009	2010	2011	2012	2013	2014	2015	2016	2017	2018
Placed	Quintile 1	100	100	100	100	100	100	100	100	100	100
	Quintile 2	172	173	168	164	162	160	162	162	150	143
	Quintile 3	266	266	251	255	240	223	231	216	194	192
	Quintile 4	387	361	356	338	317	294	299	284	250	247
	Quintile 5	539	490	503	473	455	410	410	394	333	328