

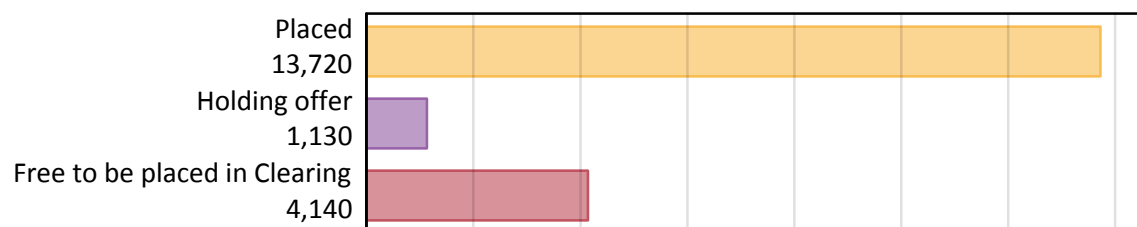
Daily Clearing Analysis: Overview

Analysis at 00:05 on Wednesday 29 August 2018 (13 days after A level results day)

A.1 Applicants by type and status from Northern Ireland, 2018 cycle

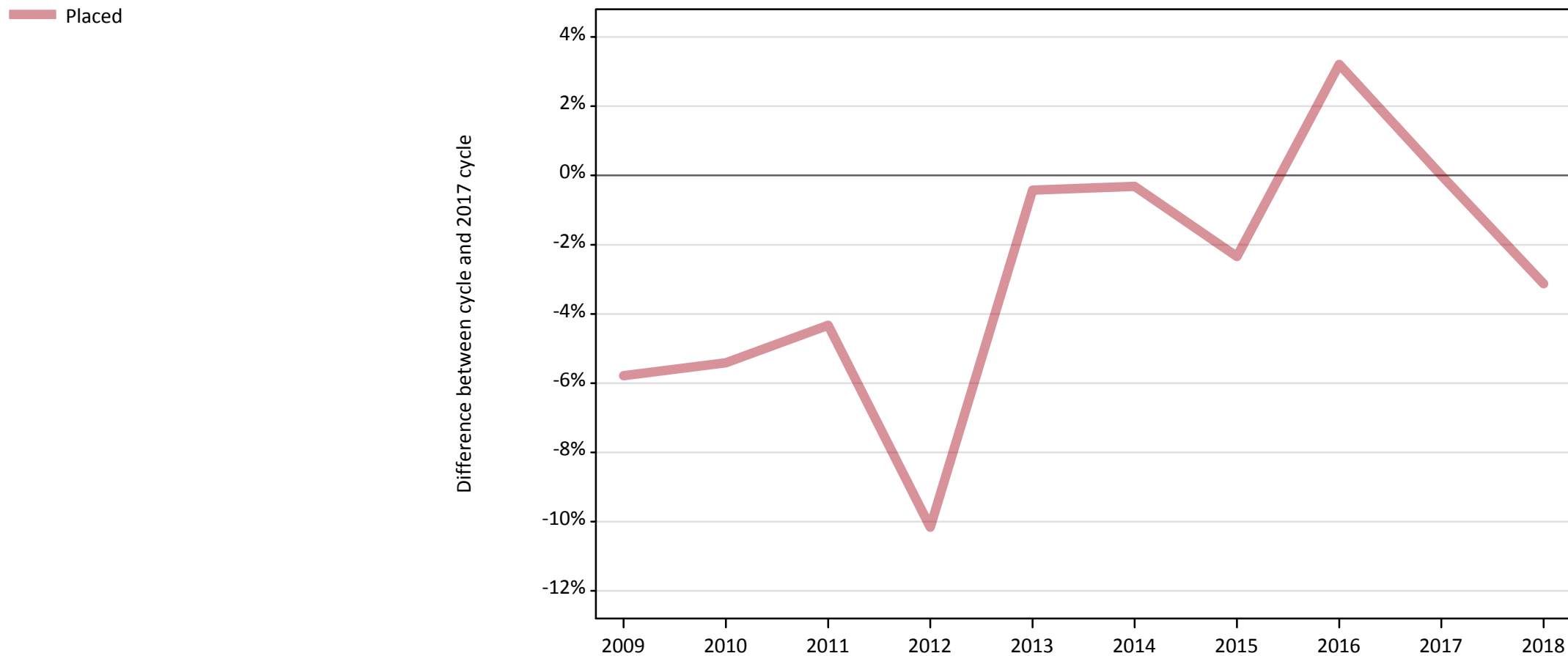
Applicant type	Status	2018
Main scheme	Placed (Clearing)	860
	Placed (Adjustment)	20
	Placed (Firm)	11,450
	Placed (Insurance)	1,190
	Placed (Other)	120
	Holding offer	1,130
	Free to be placed in Clearing	4,140
Direct to Clearing	Placed (Direct to Clearing)	80
	Other (Direct to Clearing)	70
All applicants	Placed	13,720

A.2 Summary of applicants who are placed, holding offers or free to be placed in Clearing (Northern Ireland)



A.3 All placed applicants from Northern Ireland: 13 days after A level results day

All placed applicants: difference between cycle and 2017 cycle



Note: The percentage change is not plotted in the above chart for groups with fewer than 30 placed applicants in any one cycle.

A.4 All placed applicants from Northern Ireland: 13 days after A level results day

All placed applicants: applicants at 13 days after A level results day

Applicant type	Status	2009	2010	2011	2012	2013	2014	2015	2016	2017	2018
All applicants	Placed	13,350	13,400	13,550	12,730	14,110	14,120	13,840	14,620	14,170	13,720

A.5 All placed applicants from Northern Ireland: 13 days after A level results day

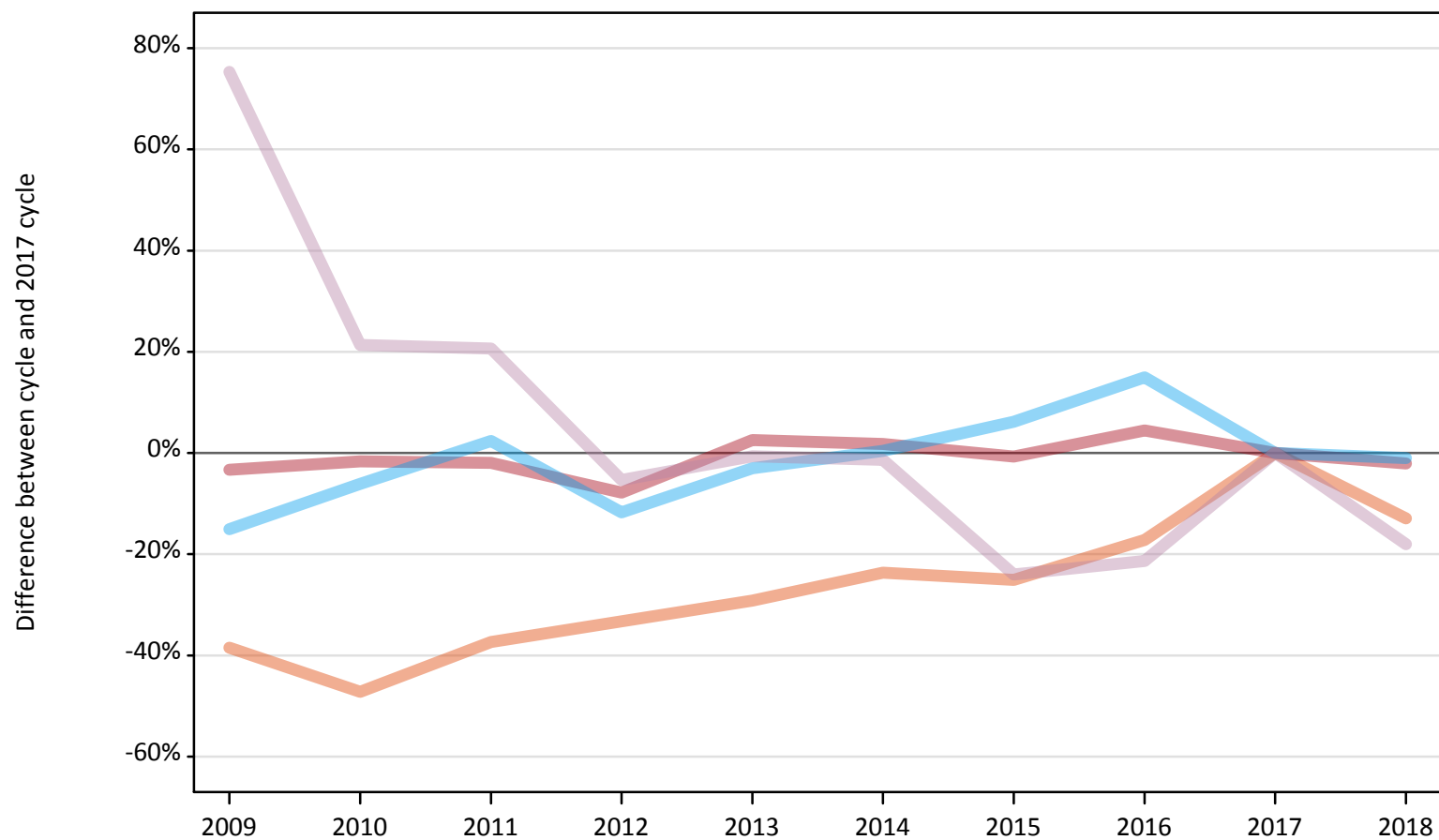
All placed applicants: difference between cycle and 2017 cycle

Applicant type	Status	2009	2010	2011	2012	2013	2014	2015	2016	2017	2018
All applicants	Placed	-6%	-5%	-4%	-10%	-0%	-0%	-2%	3%	0%	-3%

Note: The percentage change is not recorded in the above table for groups with fewer than 10 placed applicants in that cycle or in the 2017 cycle.

A.6 Placed main scheme applicants from Northern Ireland: 13 days after A level results day
All Main scheme placed routes (excluding Adjustment): difference between cycle and 2017 cycle

- Placed (Clearing)
- Placed (Firm)
- Placed (Insurance)
- Placed (Other)



Note: The percentage change is not plotted in the above chart for groups with fewer than 30 placed applicants in any one cycle.

A.7 Placed main scheme applicants from Northern Ireland: 13 days after A level results day

All Main scheme placed routes (excluding Adjustment): applicants at 13 days after A level results day

Applicant type	Status	2009	2010	2011	2012	2013	2014	2015	2016	2017	2018
Main scheme	Placed (Clearing)	610	520	620	660	700	760	740	820	990	860
	Placed (Firm)	11,300	11,490	11,460	10,780	11,990	11,900	11,610	12,200	11,690	11,450
	Placed (Insurance)	1,020	1,130	1,230	1,060	1,170	1,210	1,280	1,380	1,200	1,190
	Placed (Other)	260	180	180	140	150	150	110	120	150	120

A.8 Placed main scheme applicants from Northern Ireland: 13 days after A level results day

All Main scheme placed routes (excluding Adjustment): difference between cycle and 2017 cycle

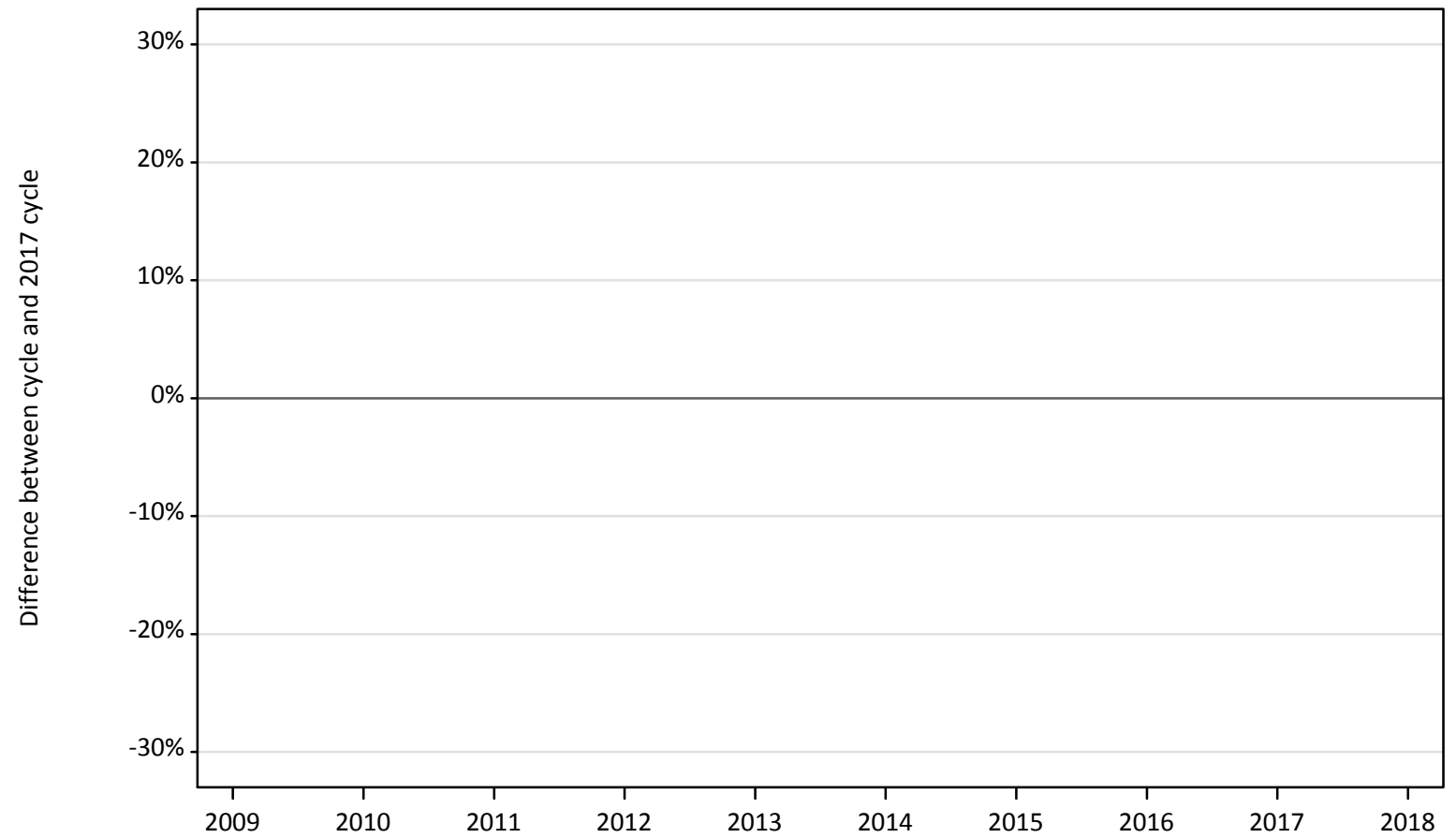
Applicant type	Status	2009	2010	2011	2012	2013	2014	2015	2016	2017	2018
Main scheme	Placed (Clearing)	-38%	-47%	-37%	-33%	-29%	-24%	-25%	-17%	0%	-13%
	Placed (Firm)	-3%	-2%	-2%	-8%	3%	2%	-1%	4%	0%	-2%
	Placed (Insurance)	-15%	-6%	2%	-12%	-3%	0%	6%	15%	0%	-1%
	Placed (Other)	75%	21%	21%	-5%	-1%	-1%	-24%	-21%	0%	-18%

Note: The percentage change is not recorded in the above table for groups with fewer than 10 placed applicants in that cycle or in the 2017 cycle.

A.9 Main scheme applicants placed through adjustment: 13 days after A level results day

Placed through adjustment: difference between cycle and 2017 cycle

Placed (Adjustment)



Note: The percentage change is not plotted in the above chart for groups with fewer than 30 placed applicants in any one cycle.

A.10 Main scheme applicants placed through adjustment: 13 days after A level results day

Placed through adjustment: applicants at 13 days after A level results day

Applicant type	Status	2009	2010	2011	2012	2013	2014	2015	2016	2017	2018
Main scheme	Placed (Adjustment)	30	30	20	30	30	30	40	30	30	20

A.11 Main scheme applicants placed through adjustment: 13 days after A level results day

Placed through adjustment: difference between cycle and 2017 cycle

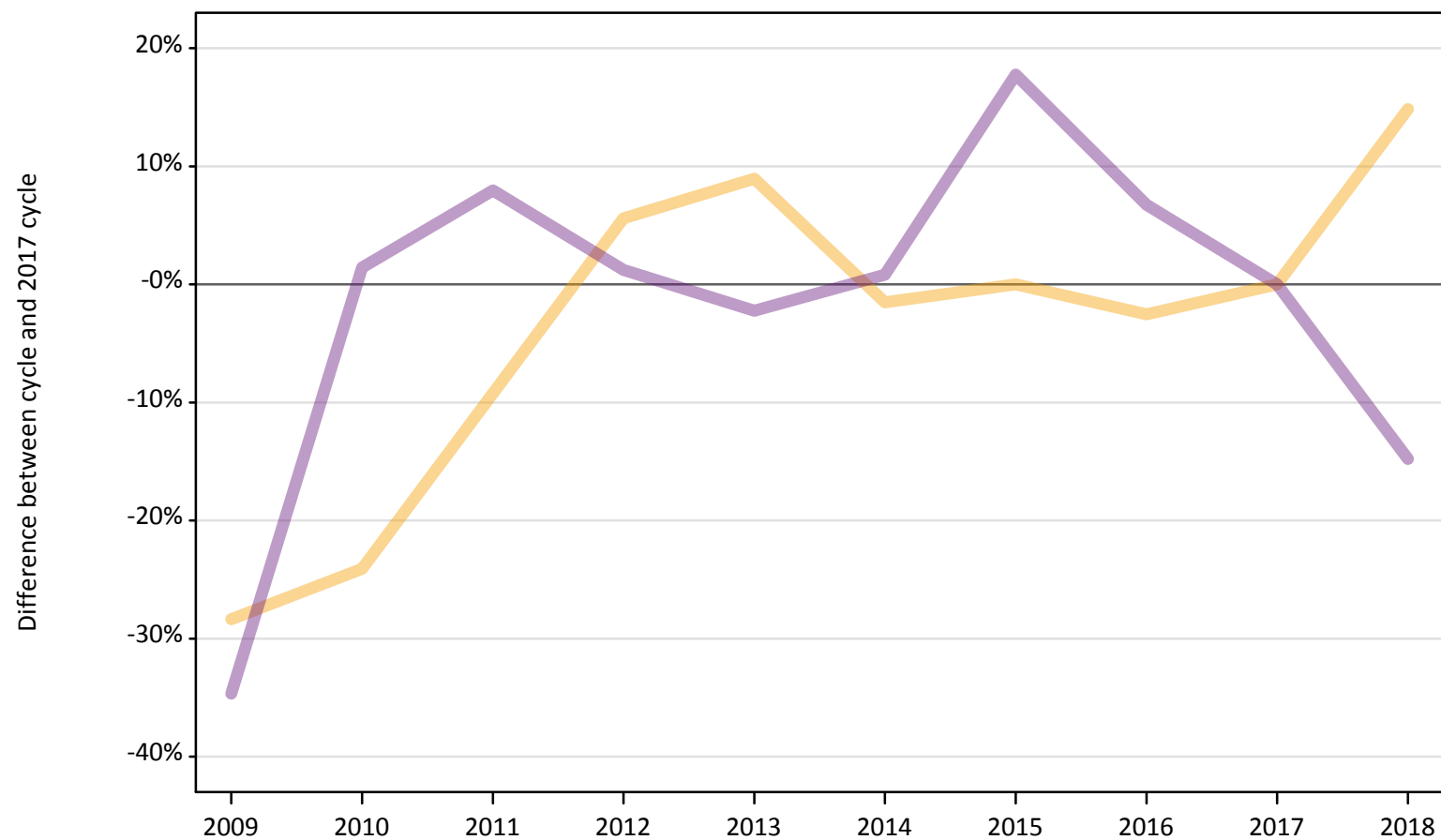
Applicant type	Status	2009	2010	2011	2012	2013	2014	2015	2016	2017	2018
Main scheme	Placed (Adjustment)	-24%	-26%	-44%	-24%	-6%	-12%	3%	-26%	0%	-41%

Note: The percentage change is not recorded in the above table for groups with fewer than 10 placed applicants in that cycle or in the 2017 cycle.

A.12 Main scheme applicants not currently placed from Northern Ireland: 13 days after A level results day

Applicants in unplaced states: difference between cycle and 2017 cycle

— Holding offer
— Free to be placed in Clearing



Note: The percentage change is not plotted in the above chart for groups with fewer than 30 unplaced applicants in any one cycle.

A.13 Main scheme applicants not currently placed from Northern Ireland: 13 days after A level results day

Applicants in unplaced states: applicants at 13 days after A level results day

Applicant type	Status	2009	2010	2011	2012	2013	2014	2015	2016	2017	2018
Main scheme	Holding offer	710	750	890	1,040	1,070	970	980	960	980	1,130
	Free to be placed in Clearing	3,170	4,930	5,240	4,920	4,750	4,900	5,720	5,180	4,860	4,140

A.14 Main scheme applicants not currently placed from Northern Ireland: 13 days after A level results day

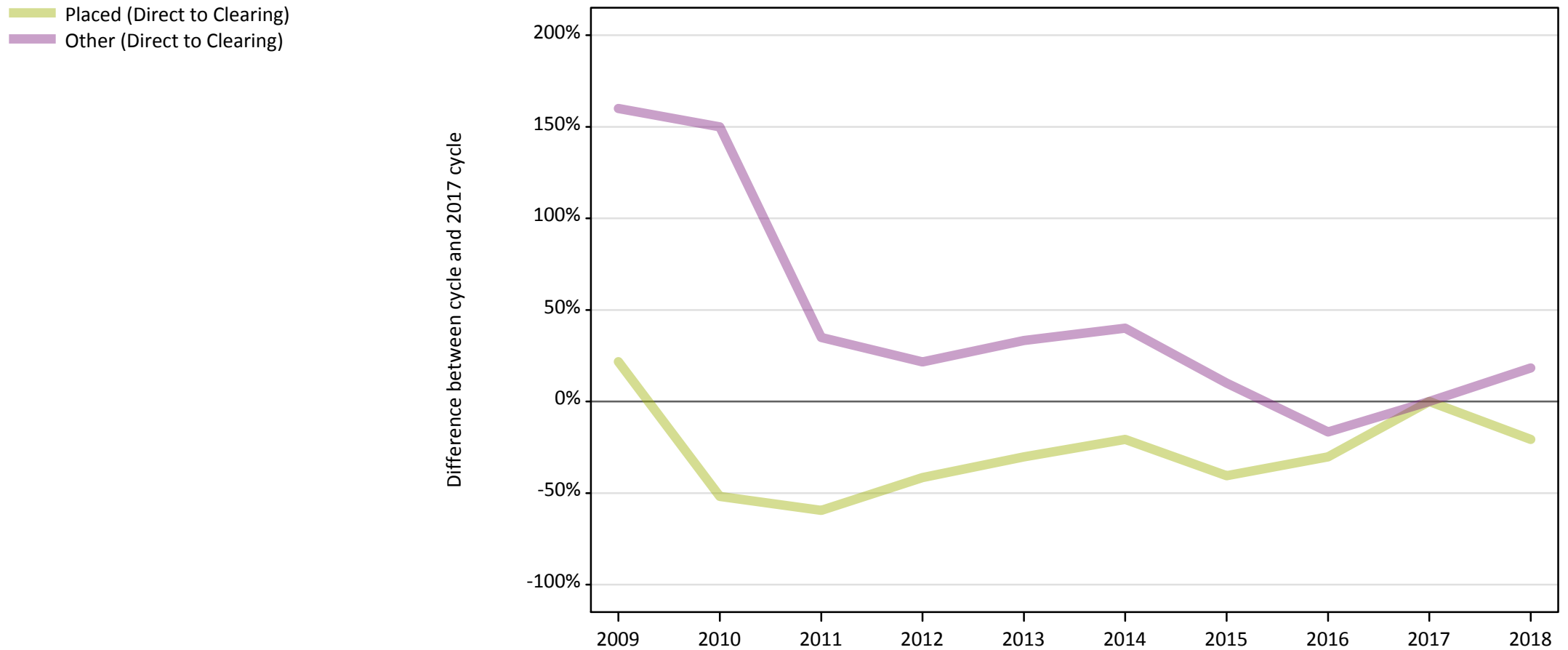
Applicants in unplaced states: difference between cycle and 2017 cycle

Applicant type	Status	2009	2010	2011	2012	2013	2014	2015	2016	2017	2018
Main scheme	Holding offer	-28%	-24%	-9%	6%	9%	-2%	0%	-3%	0%	15%
	Free to be placed in Clearing	-35%	1%	8%	1%	-2%	1%	18%	7%	0%	-15%

Note: The percentage change is not recorded in the above table for groups with fewer than 10 unplaced applicants in that cycle or in the 2017 cycle.

A.15 Direct to Clearing applicants from Northern Ireland: 13 days after A level results day

Direct to Clearing: difference between cycle and 2017 cycle



Note: The percentage change is not plotted in the above chart for groups with fewer than 30 placed applicants in any one cycle.

A.16 Direct to Clearing applicants from Northern Ireland: 13 days after A level results day

Direct to Clearing 13 days after A level results day

Applicant type	Status	2009	2010	2011	2012	2013	2014	2015	2016	2017	2018
Direct to Clearing	Placed (Direct to Clearing)	130	50	40	60	70	80	60	70	110	80
	Other (Direct to Clearing)	160	150	80	70	80	80	70	50	60	70

A.17 Direct to Clearing applicants from Northern Ireland: 13 days after A level results day

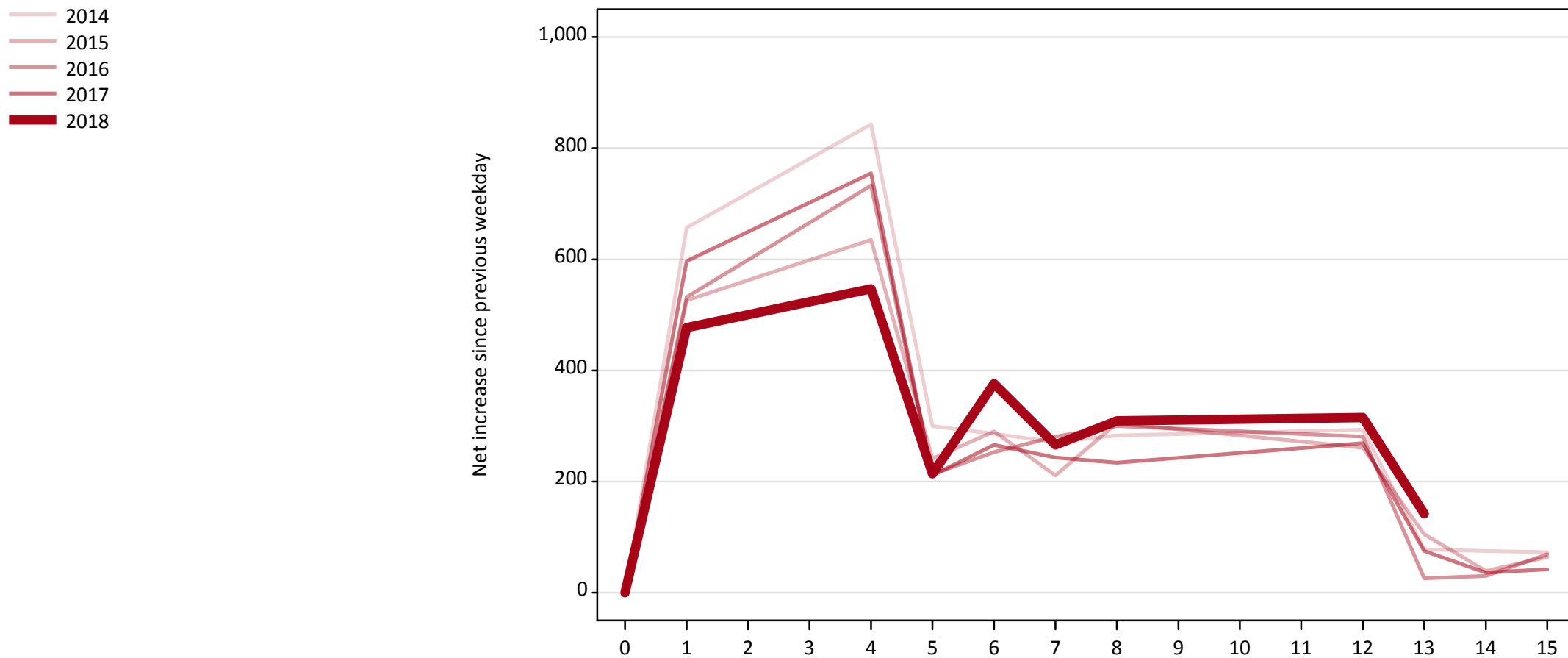
Direct to Clearing: difference between cycle and 2017 cycle

Applicant type	Status	2009	2010	2011	2012	2013	2014	2015	2016	2017	2018
Direct to Clearing	Placed (Direct to Clearing)	22%	-52%	-59%	-42%	-30%	-21%	-41%	-30%	0%	-21%
	Other (Direct to Clearing)	160%	150%	35%	22%	33%	40%	10%	-17%	0%	18%

Note: The percentage change is not recorded in the above table for groups with fewer than 10 placed applicants in that cycle or in the 2017 cycle.

A.18 All Placed: Daily net change (from Northern Ireland)

Net increase since previous weekday (2018 cycle up to 13 days after A level results day)



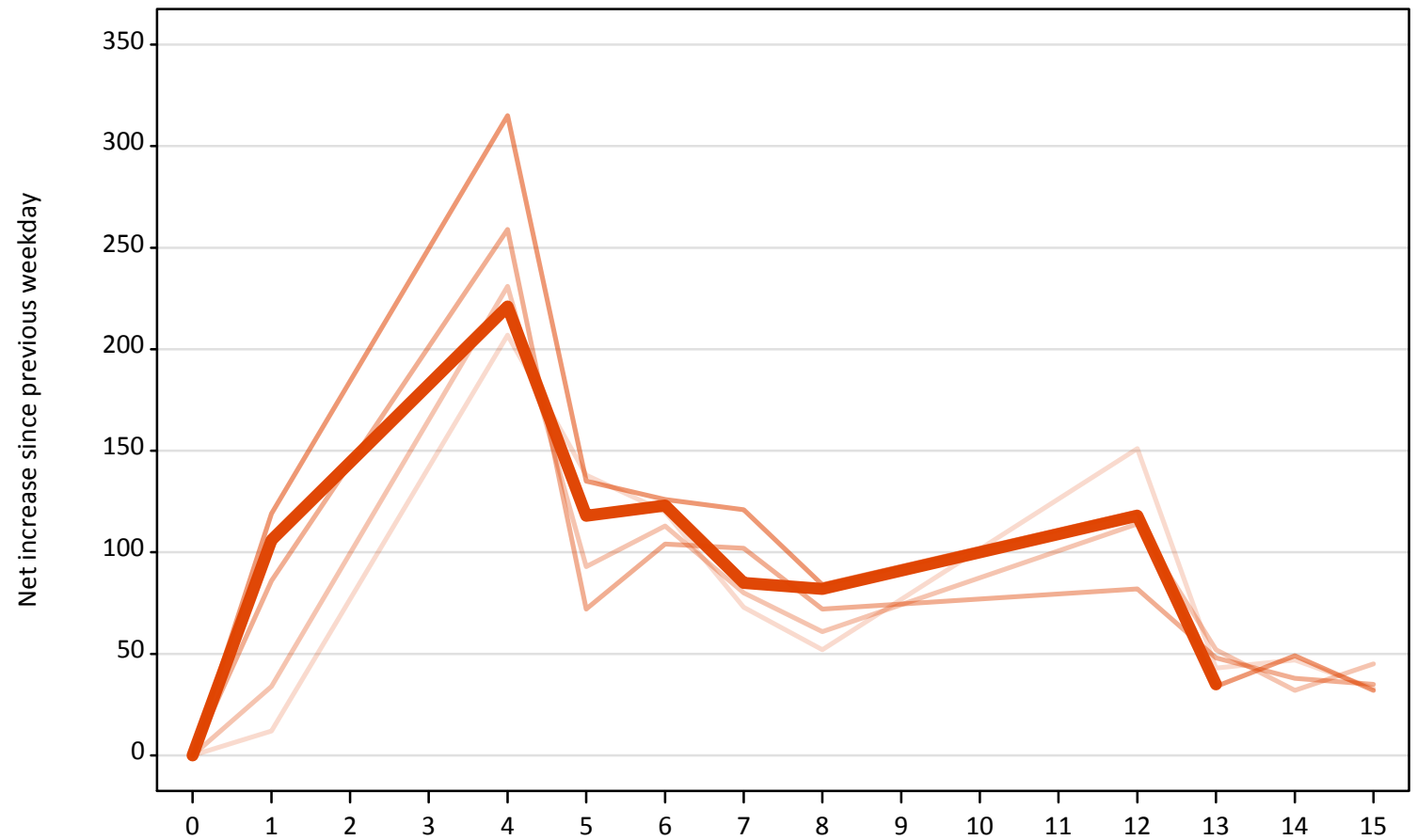
A.19 All Placed: Daily net change (from Northern Ireland)

Net increase since previous weekday (2018 cycle up to 13 days after A level results day)

Applicant status, days since A level results day		2014	2015	2016	2017	2018
All Placed	0	0	0	0	0	0
	1	660	530	530	600	480
	4	840	640	730	760	550
	5	300	240	210	210	210
	6	290	290	250	270	380
	7	270	210	280	240	270
	8	280	310	300	230	310
	12	290	260	280	270	320
	13	80	110	30	80	140
	14	80	40	30	40	
	15	70	60	70	40	

A.20 Placed through Clearing only: Daily net change (from Northern Ireland)
Net increase since previous weekday (2018 cycle up to 13 days after A level results day)

- 2014
- 2015
- 2016
- 2017
- 2018**



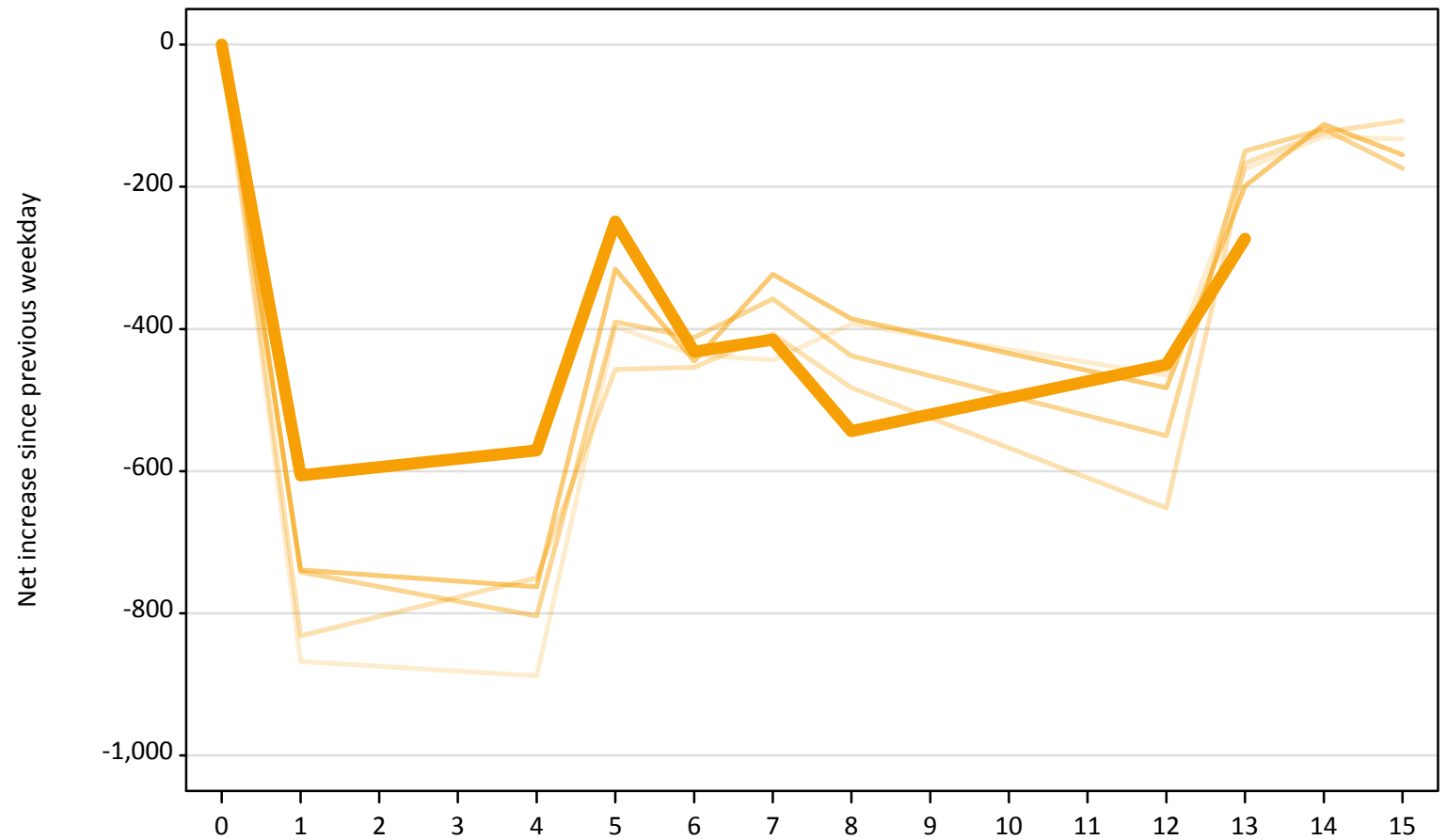
A.21 Placed through Clearing only: Daily net change (from Northern Ireland)

Net increase since previous weekday (2018 cycle up to 13 days after A level results day)

Applicant status, days since A level results day		2014	2015	2016	2017	2018
Placed through Clearing only	0	0	0	0	0	0
	1	10	30	90	120	110
	4	210	230	260	320	220
	5	140	90	70	140	120
	6	120	110	100	130	120
	7	70	80	100	120	90
	8	50	60	70	80	80
	12	150	110	80	120	120
	13	40	50	50	30	40
	14	50	30	40	50	
	15	30	50	40	30	

A.22 Holding Offer: Daily net change (from Northern Ireland)
Net increase since previous weekday (2018 cycle up to 13 days after A level results day)

- 2014
- 2015
- 2016
- 2017
- 2018



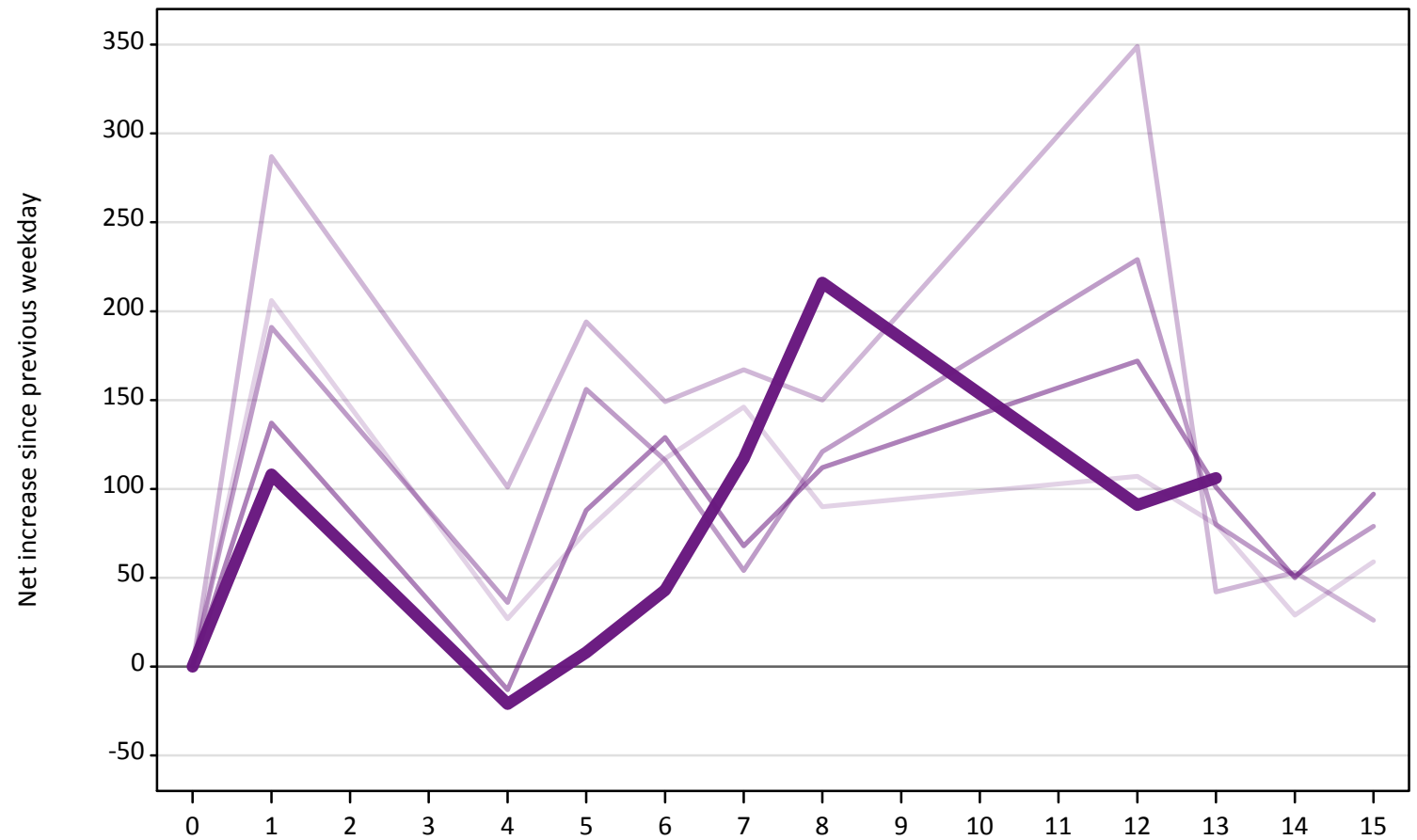
A.23 Holding Offer: Daily net change (from Northern Ireland)

Net increase since previous weekday (2018 cycle up to 13 days after A level results day)

Applicant status, days since A level results day		2014	2015	2016	2017	2018
Holding Offer	0	0	0	0	0	0
	1	-870	-830	-740	-740	-610
	4	-890	-750	-800	-760	-570
	5	-400	-460	-390	-320	-250
	6	-440	-450	-410	-450	-430
	7	-440	-410	-360	-320	-420
	8	-390	-480	-440	-390	-540
	12	-470	-650	-550	-480	-450
	13	-180	-170	-150	-200	-270
	14	-130	-120	-120	-110	
	15	-130	-110	-170	-160	

A.24 Free to be placed in Clearing: Daily net change (from Northern Ireland)
Net increase since previous weekday (2018 cycle up to 13 days after A level results day)

- 2014
- 2015
- 2016
- 2017
- 2018



A.25 Free to be placed in Clearing: Daily net change (from Northern Ireland)

Net increase since previous weekday (2018 cycle up to 13 days after A level results day)

Applicant status, days since A level results day		2014	2015	2016	2017	2018
Free to be placed in Clearing	0	0	0	0	0	0
	1	210	290	190	140	110
	4	30	100	40	-10	-20
	5	80	190	160	90	10
	6	120	150	120	130	40
	7	150	170	50	70	120
	8	90	150	120	110	220
	12	110	350	230	170	90
	13	80	40	80	100	110
	14	30	50	50	50	
	15	60	30	80	100	