

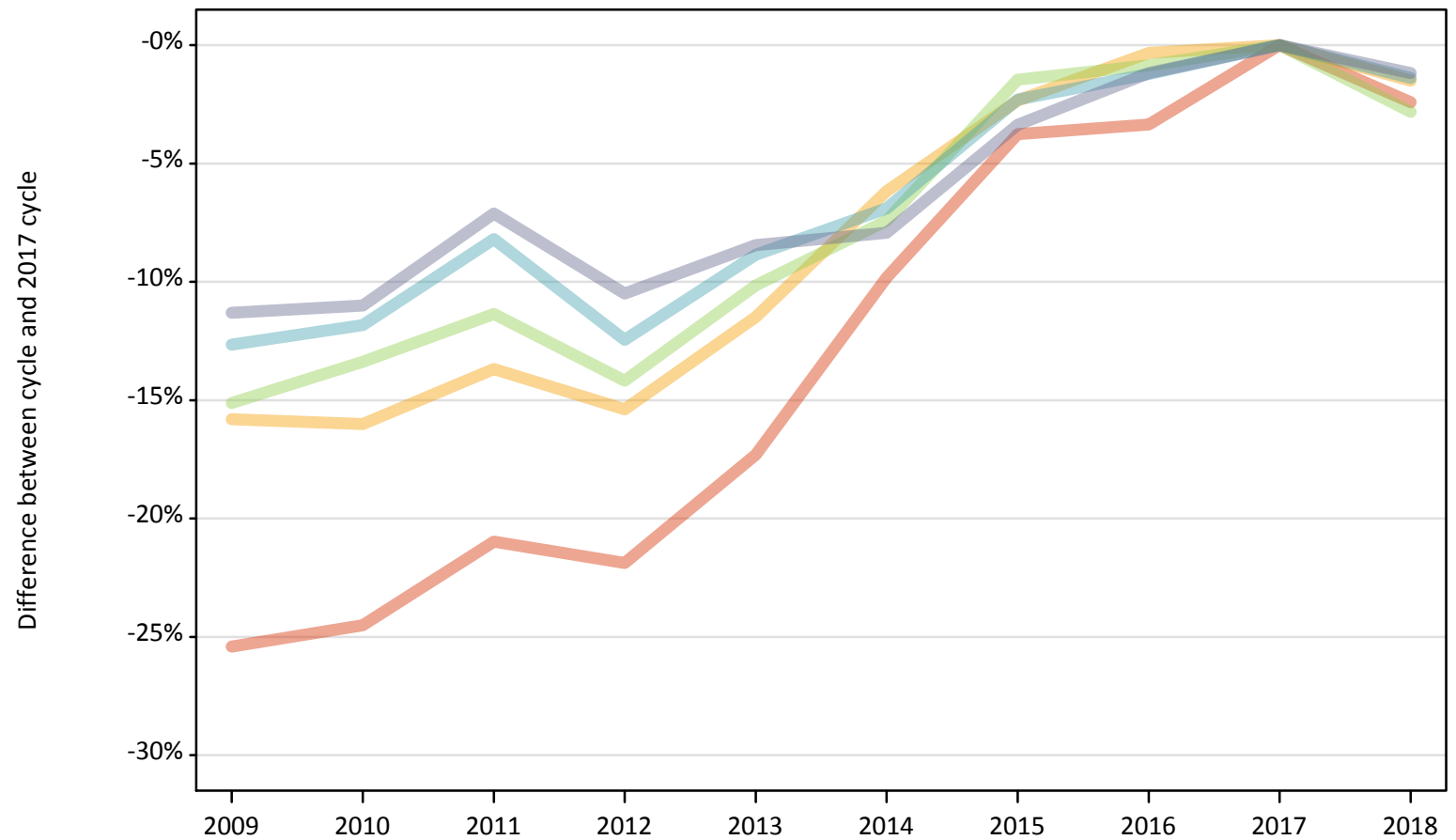
# Daily Clearing Analysis: POLAR4

Analysis at 00:05 on Wednesday 29 August 2018 (13 days after A level results day)

P.1 Placed 18 year old applicants from England by POLAR4 quintile: 13 days after A level results day

Placed 18 year old applicants: change relative to 2017 cycle totals

- Quintile 1
- Quintile 2
- Quintile 3
- Quintile 4
- Quintile 5



Note: The percentage change is not plotted in the above chart for groups with fewer than 30 placed applicants in any one cycle.

## P.2 Placed 18 year old applicants from England by POLAR4 quintile: 13 days after A level results day

Applicant Status	POLAR4	2009	2010	2011	2012	2013	2014	2015	2016	2017	2018
Placed	Quintile 1	16,710	16,910	17,700	17,500	18,530	20,200	21,560	21,650	22,400	21,860
	Quintile 2	26,040	25,980	26,700	26,170	27,380	29,020	30,210	30,830	30,930	30,470
	Quintile 3	32,480	33,150	33,920	32,840	34,380	35,420	37,710	37,940	38,260	37,180
	Quintile 4	40,940	41,330	43,030	41,040	42,720	43,630	45,790	46,300	46,870	46,220
	Quintile 5	59,120	59,320	61,910	59,660	61,020	61,370	64,410	65,860	66,650	65,870

## P.3 Placed 18 year old applicants from England by POLAR4 quintile: 13 days after A level results day

Placed 18 year old applicants: change relative to 2017 cycle totals

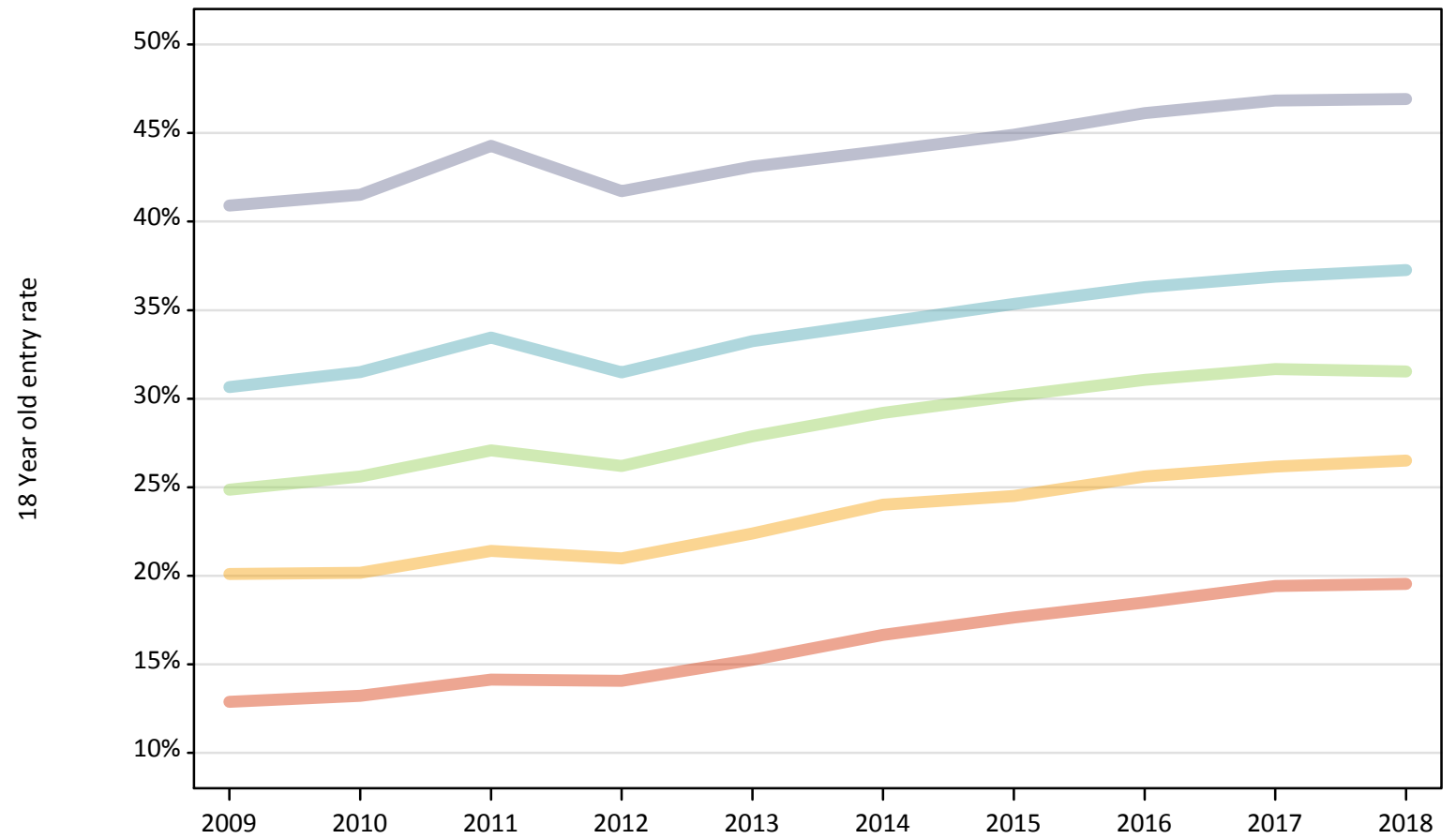
Applicant Status	POLAR4	2009	2010	2011	2012	2013	2014	2015	2016	2017	2018
Placed	Quintile 1	-25%	-25%	-21%	-22%	-17%	-10%	-4%	-3%	0%	-2%
	Quintile 2	-16%	-16%	-14%	-15%	-11%	-6%	-2%	-0%	0%	-1%
	Quintile 3	-15%	-13%	-11%	-14%	-10%	-7%	-1%	-1%	0%	-3%
	Quintile 4	-13%	-12%	-8%	-12%	-9%	-7%	-2%	-1%	0%	-1%
	Quintile 5	-11%	-11%	-7%	-10%	-8%	-8%	-3%	-1%	0%	-1%

Note: The percentage change is not recorded in the above table for groups with fewer than 10 placed applicants in that cycle or in the 2017 cycle.

## P.4 Placed 18 year old applicants from England by POLAR4 quintile: 13 days after A level results day

Placed 18 year old applicants: entry rate

- Quintile 1
- Quintile 2
- Quintile 3
- Quintile 4
- Quintile 5



**P.5 Placed 18 year old applicants from England by POLAR4 quintile: 13 days after A level results day**

Placed 18 year old applicants: entry rate

Applicant Status	POLAR4	2009	2010	2011	2012	2013	2014	2015	2016	2017	2018
Placed	Quintile 1	12.9%	13.2%	14.1%	14.1%	15.3%	16.7%	17.6%	18.5%	19.4%	19.5%
	Quintile 2	20.1%	20.2%	21.4%	21.0%	22.4%	24.0%	24.5%	25.6%	26.2%	26.5%
	Quintile 3	24.9%	25.6%	27.1%	26.2%	27.9%	29.2%	30.2%	31.1%	31.7%	31.5%
	Quintile 4	30.7%	31.5%	33.5%	31.5%	33.3%	34.3%	35.3%	36.3%	36.9%	37.3%
	Quintile 5	40.9%	41.5%	44.3%	41.7%	43.1%	44.0%	44.9%	46.1%	46.8%	46.9%

**P.6 Placed 18 year old applicants from England by POLAR4 quintile: 13 days after A level results day**

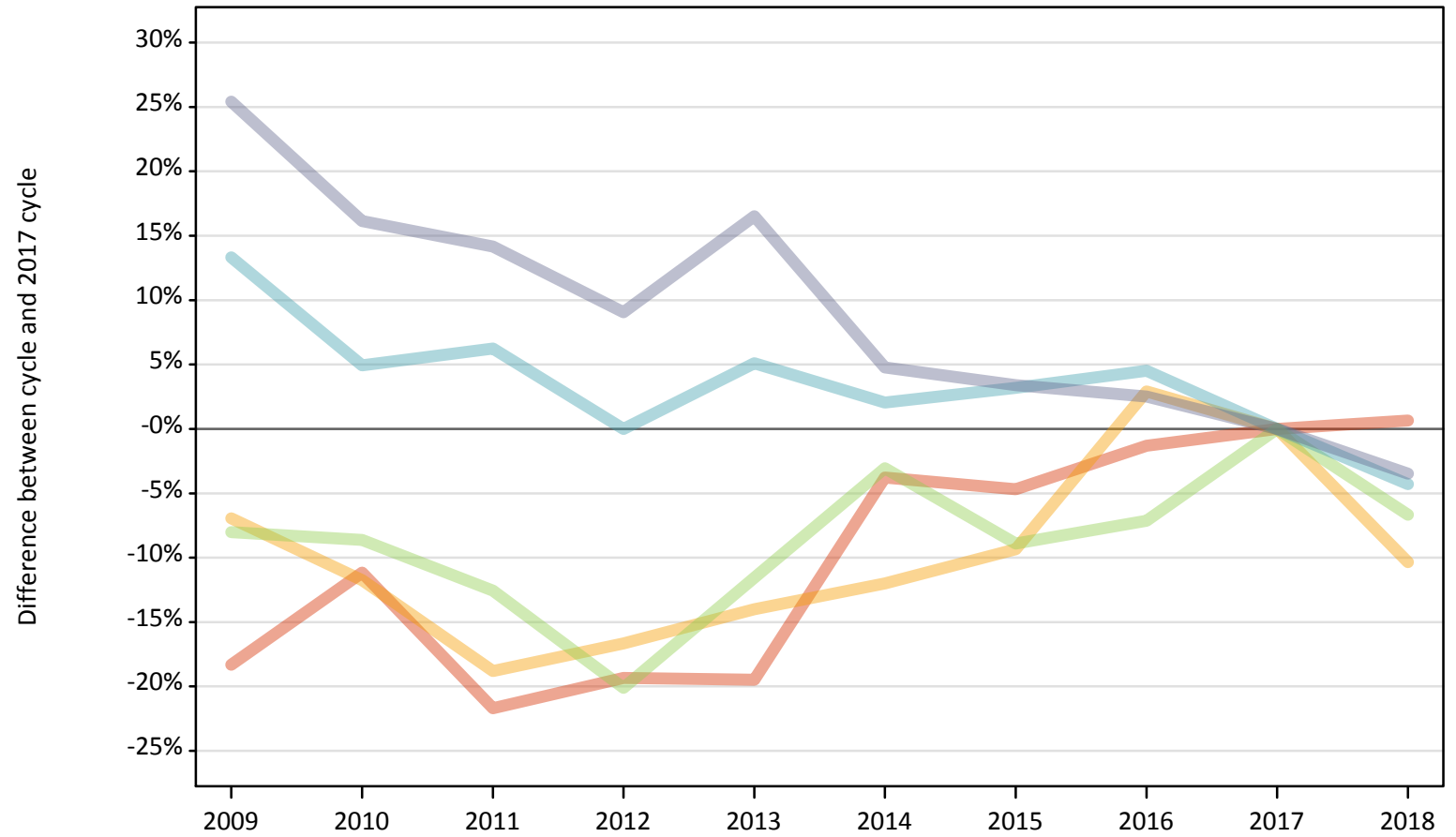
Placed 18 year old applicants: entry rate (indexed to 100 = Quintile 1)

Applicant Status	POLAR4	2009	2010	2011	2012	2013	2014	2015	2016	2017	2018
Placed	Quintile 1	100	100	100	100	100	100	100	100	100	100
	Quintile 2	156	153	151	149	147	144	139	138	135	136
	Quintile 3	193	194	192	186	183	175	171	168	163	161
	Quintile 4	238	238	237	224	218	206	200	196	190	191
	Quintile 5	318	314	313	297	283	264	255	249	241	240

**P.7 Placed 18 year old applicants from Northern Ireland by POLAR4 quintile: 13 days after A level results day**

Placed 18 year old applicants: change relative to 2017 cycle totals

- Quintile 1
- Quintile 2
- Quintile 3
- Quintile 4
- Quintile 5



Note: The percentage change is not plotted in the above chart for groups with fewer than 30 placed applicants in any one cycle.

**P.8 Placed 18 year old applicants from Northern Ireland by POLAR4 quintile: 13 days after A level results day**

Applicant Status	POLAR4	2009	2010	2011	2012	2013	2014	2015	2016	2017	2018
Placed	Quintile 1	630	680	600	620	620	740	730	760	770	780
	Quintile 2	740	700	640	660	680	700	720	820	790	710
	Quintile 3	1,350	1,350	1,290	1,180	1,300	1,430	1,340	1,370	1,470	1,370
	Quintile 4	2,380	2,210	2,230	2,100	2,210	2,150	2,170	2,200	2,100	2,010
	Quintile 5	4,180	3,870	3,810	3,640	3,890	3,490	3,450	3,420	3,330	3,220

**P.9 Placed 18 year old applicants from Northern Ireland by POLAR4 quintile: 13 days after A level results day**

Placed 18 year old applicants: change relative to 2017 cycle totals

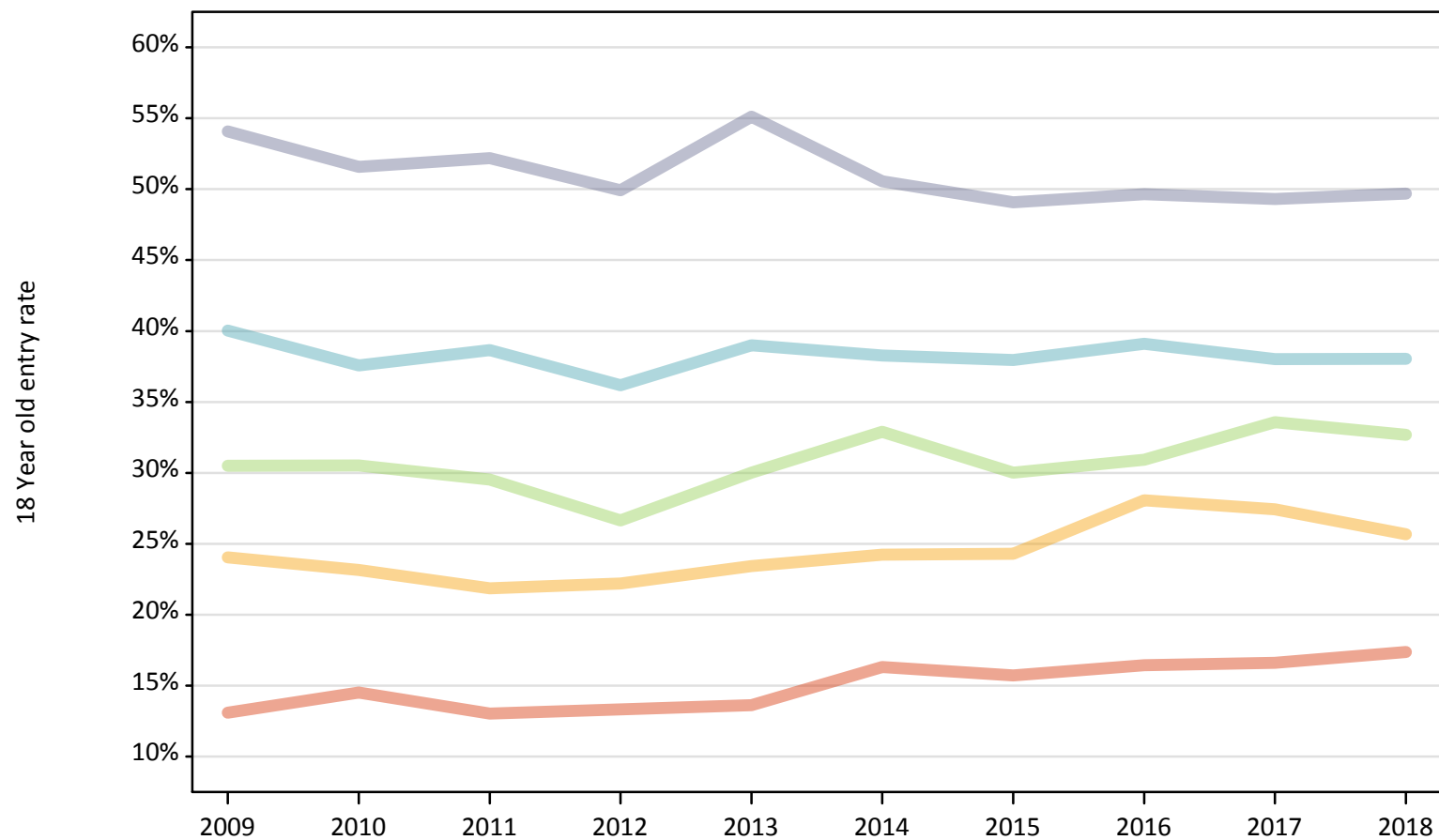
Applicant Status	POLAR4	2009	2010	2011	2012	2013	2014	2015	2016	2017	2018
Placed	Quintile 1	-18%	-11%	-22%	-19%	-19%	-4%	-5%	-1%	0%	1%
	Quintile 2	-7%	-12%	-19%	-17%	-14%	-12%	-9%	3%	0%	-10%
	Quintile 3	-8%	-9%	-13%	-20%	-12%	-3%	-9%	-7%	0%	-7%
	Quintile 4	13%	5%	6%	0%	5%	2%	3%	5%	0%	-4%
	Quintile 5	25%	16%	14%	9%	17%	5%	3%	3%	0%	-3%

Note: The percentage change is not recorded in the above table for groups with fewer than 10 placed applicants in that cycle or in the 2017 cycle.

### P.10 Placed 18 year old applicants from Northern Ireland by POLAR4 quintile: 13 days after A level results day

Placed 18 year old applicants: entry rate

- Quintile 1
- Quintile 2
- Quintile 3
- Quintile 4
- Quintile 5



**P.11 Placed 18 year old applicants from Northern Ireland by POLAR4 quintile: 13 days after A level results day**

Placed 18 year old applicants: entry rate

Applicant Status	POLAR4	2009	2010	2011	2012	2013	2014	2015	2016	2017	2018
Placed	Quintile 1	13.1%	14.5%	13.0%	13.3%	13.6%	16.3%	15.7%	16.4%	16.6%	17.4%
	Quintile 2	24.0%	23.2%	21.8%	22.2%	23.4%	24.2%	24.3%	28.1%	27.4%	25.7%
	Quintile 3	30.5%	30.5%	29.5%	26.6%	30.0%	32.9%	30.0%	30.9%	33.6%	32.7%
	Quintile 4	40.0%	37.6%	38.6%	36.2%	39.0%	38.3%	38.0%	39.1%	38.0%	38.0%
	Quintile 5	54.1%	51.6%	52.2%	49.9%	55.1%	50.6%	49.1%	49.6%	49.3%	49.7%

**P.12 Placed 18 year old applicants from Northern Ireland by POLAR4 quintile: 13 days after A level results day**

Placed 18 year old applicants: entry rate (indexed to 100 = Quintile 1)

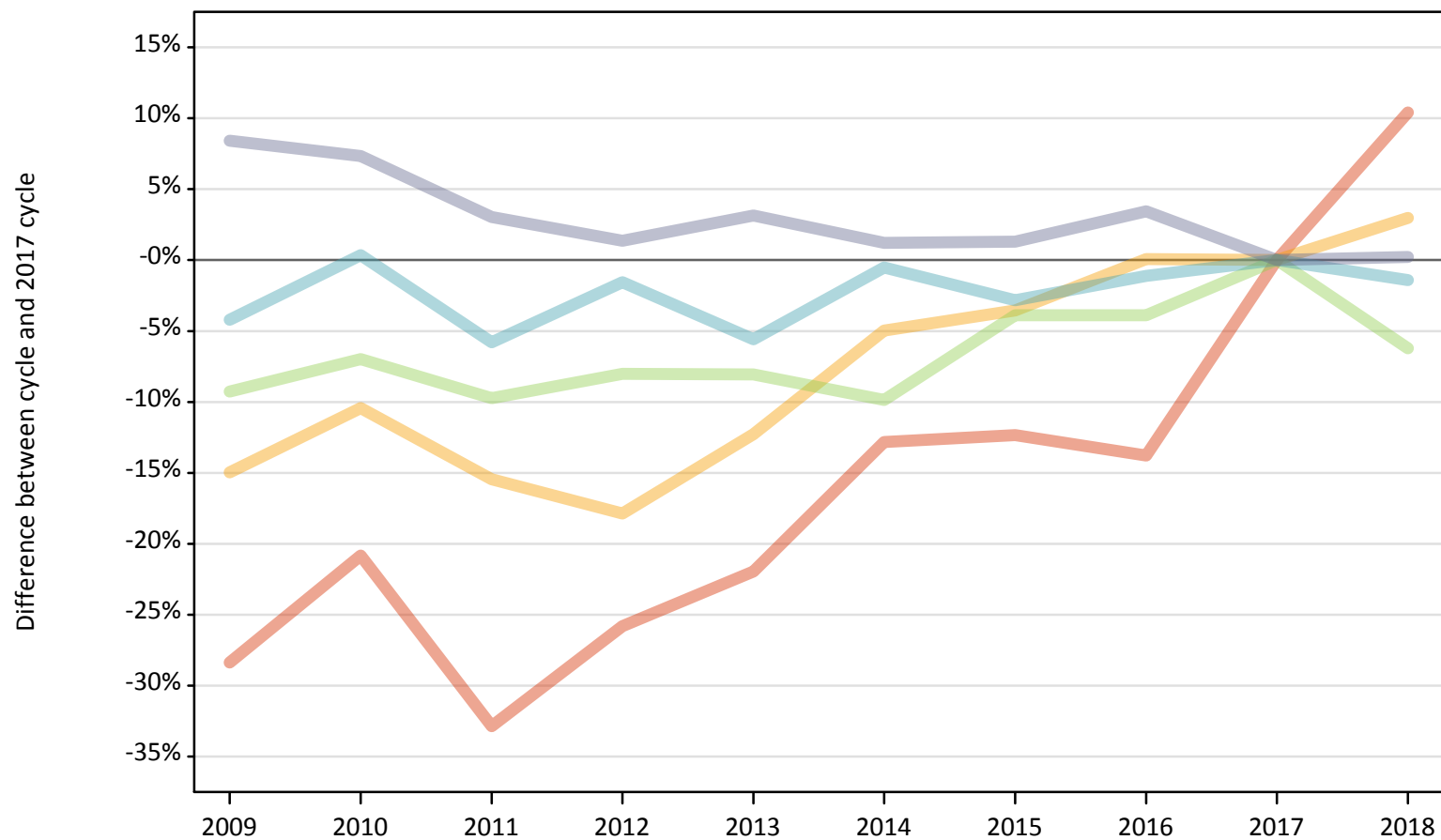
Applicant Status	POLAR4	2009	2010	2011	2012	2013	2014	2015	2016	2017	2018
Placed	Quintile 1	100	100	100	100	100	100	100	100	100	100
	Quintile 2	184	160	168	166	172	148	155	171	165	148
	Quintile 3	233	210	227	200	220	202	191	188	202	188
	Quintile 4	306	259	297	271	286	235	242	238	229	219
	Quintile 5	413	355	401	374	405	310	312	302	297	286



### P.13 Placed 18 year old applicants from Scotland by POLAR4 quintile: 13 days after A level results day

Placed 18 year old applicants: change relative to 2017 cycle totals

- Quintile 1
- Quintile 2
- Quintile 3
- Quintile 4
- Quintile 5



Note: The percentage change is not plotted in the above chart for groups with fewer than 30 placed applicants in any one cycle.

**P.14 Placed 18 year old applicants from Scotland by POLAR4 quintile: 13 days after A level results day**

Applicant Status	POLAR4	2009	2010	2011	2012	2013	2014	2015	2016	2017	2018
Placed	Quintile 1	450	490	420	460	490	540	550	540	620	690
	Quintile 2	1,200	1,260	1,190	1,160	1,240	1,340	1,360	1,410	1,410	1,450
	Quintile 3	2,170	2,230	2,160	2,200	2,200	2,160	2,300	2,300	2,390	2,250
	Quintile 4	3,260	3,420	3,210	3,350	3,210	3,390	3,310	3,370	3,400	3,360
	Quintile 5	7,330	7,260	6,970	6,860	6,980	6,850	6,850	7,000	6,770	6,780

**P.15 Placed 18 year old applicants from Scotland by POLAR4 quintile: 13 days after A level results day**

Placed 18 year old applicants: change relative to 2017 cycle totals

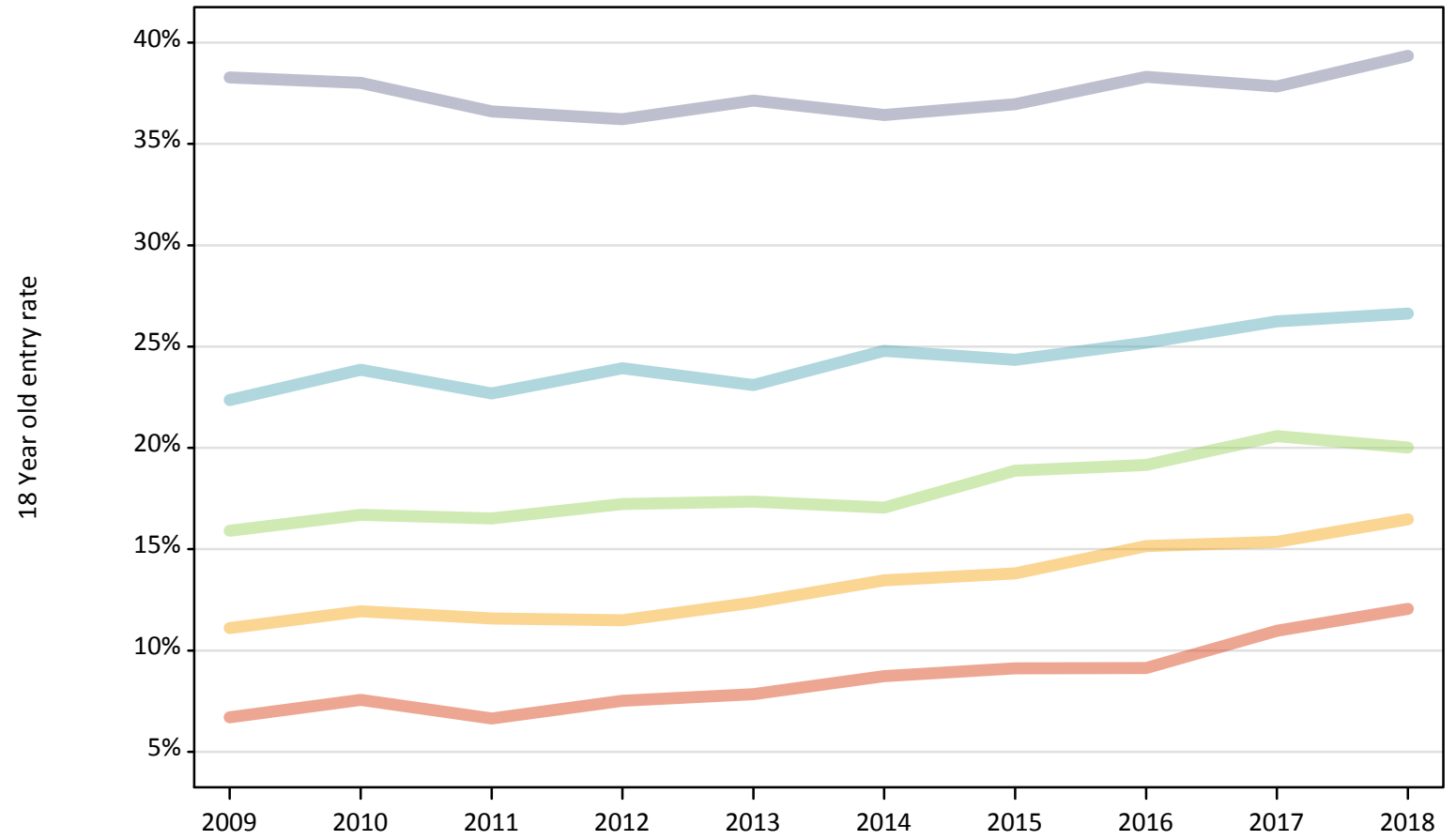
Applicant Status	POLAR4	2009	2010	2011	2012	2013	2014	2015	2016	2017	2018
Placed	Quintile 1	-28%	-21%	-33%	-26%	-22%	-13%	-12%	-14%	0%	10%
	Quintile 2	-15%	-10%	-15%	-18%	-12%	-5%	-4%	0%	0%	3%
	Quintile 3	-9%	-7%	-10%	-8%	-8%	-10%	-4%	-4%	0%	-6%
	Quintile 4	-4%	0%	-6%	-2%	-6%	-1%	-3%	-1%	0%	-1%
	Quintile 5	8%	7%	3%	1%	3%	1%	1%	3%	0%	0%

Note: The percentage change is not recorded in the above table for groups with fewer than 10 placed applicants in that cycle or in the 2017 cycle.

**P.16 Placed 18 year old applicants from Scotland by POLAR4 quintile: 13 days after A level results day**

Placed 18 year old applicants: entry rate

- Quintile 1
- Quintile 2
- Quintile 3
- Quintile 4
- Quintile 5



**P.17 Placed 18 year old applicants from Scotland by POLAR4 quintile: 13 days after A level results day**

Placed 18 year old applicants: entry rate

Applicant Status	POLAR4	2009	2010	2011	2012	2013	2014	2015	2016	2017	2018
Placed	Quintile 1	6.7%	7.6%	6.6%	7.5%	7.9%	8.7%	9.1%	9.1%	11.0%	12.1%
	Quintile 2	11.1%	11.9%	11.6%	11.5%	12.4%	13.5%	13.8%	15.2%	15.4%	16.5%
	Quintile 3	15.9%	16.7%	16.5%	17.2%	17.4%	17.1%	18.9%	19.2%	20.6%	20.0%
	Quintile 4	22.4%	23.9%	22.7%	23.9%	23.1%	24.8%	24.3%	25.2%	26.2%	26.6%
	Quintile 5	38.3%	38.0%	36.6%	36.2%	37.1%	36.4%	37.0%	38.3%	37.8%	39.3%

**P.18 Placed 18 year old applicants from Scotland by POLAR4 quintile: 13 days after A level results day**

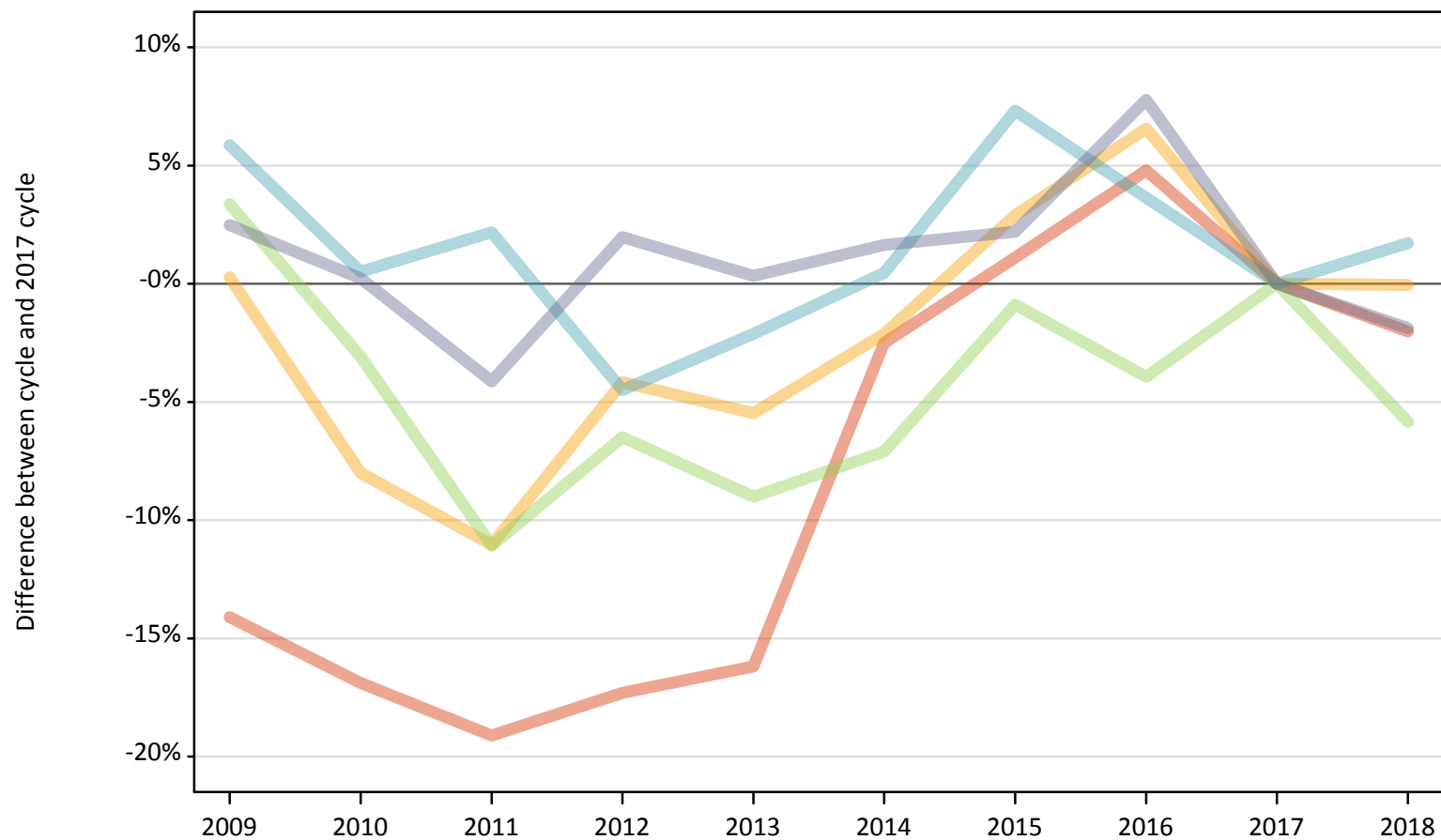
Placed 18 year old applicants: entry rate (indexed to 100 = Quintile 1)

Applicant Status	POLAR4	2009	2010	2011	2012	2013	2014	2015	2016	2017	2018
Placed	Quintile 1	100	100	100	100	100	100	100	100	100	100
	Quintile 2	166	158	174	153	157	154	151	166	140	137
	Quintile 3	237	221	248	229	221	195	207	210	188	166
	Quintile 4	334	316	341	318	294	284	267	276	239	221
	Quintile 5	571	503	551	482	473	417	405	420	345	326

### P.19 Placed 18 year old applicants from Wales by POLAR4 quintile: 13 days after A level results day

Placed 18 year old applicants: change relative to 2017 cycle totals

- Quintile 1
- Quintile 2
- Quintile 3
- Quintile 4
- Quintile 5



Note: The percentage change is not plotted in the above chart for groups with fewer than 30 placed applicants in any one cycle.

**P.20 Placed 18 year old applicants from Wales by POLAR4 quintile: 13 days after A level results day**

Applicant Status	POLAR4	2009	2010	2011	2012	2013	2014	2015	2016	2017	2018
Placed	Quintile 1	1,240	1,200	1,160	1,190	1,210	1,400	1,460	1,510	1,440	1,410
	Quintile 2	2,220	2,030	1,970	2,120	2,090	2,160	2,280	2,360	2,210	2,210
	Quintile 3	2,550	2,390	2,190	2,300	2,240	2,290	2,440	2,370	2,460	2,320
	Quintile 4	2,100	1,990	2,020	1,890	1,940	1,990	2,130	2,050	1,980	2,010
	Quintile 5	2,190	2,140	2,050	2,180	2,140	2,170	2,180	2,300	2,130	2,090

**P.21 Placed 18 year old applicants from Wales by POLAR4 quintile: 13 days after A level results day**

Placed 18 year old applicants: change relative to 2017 cycle totals

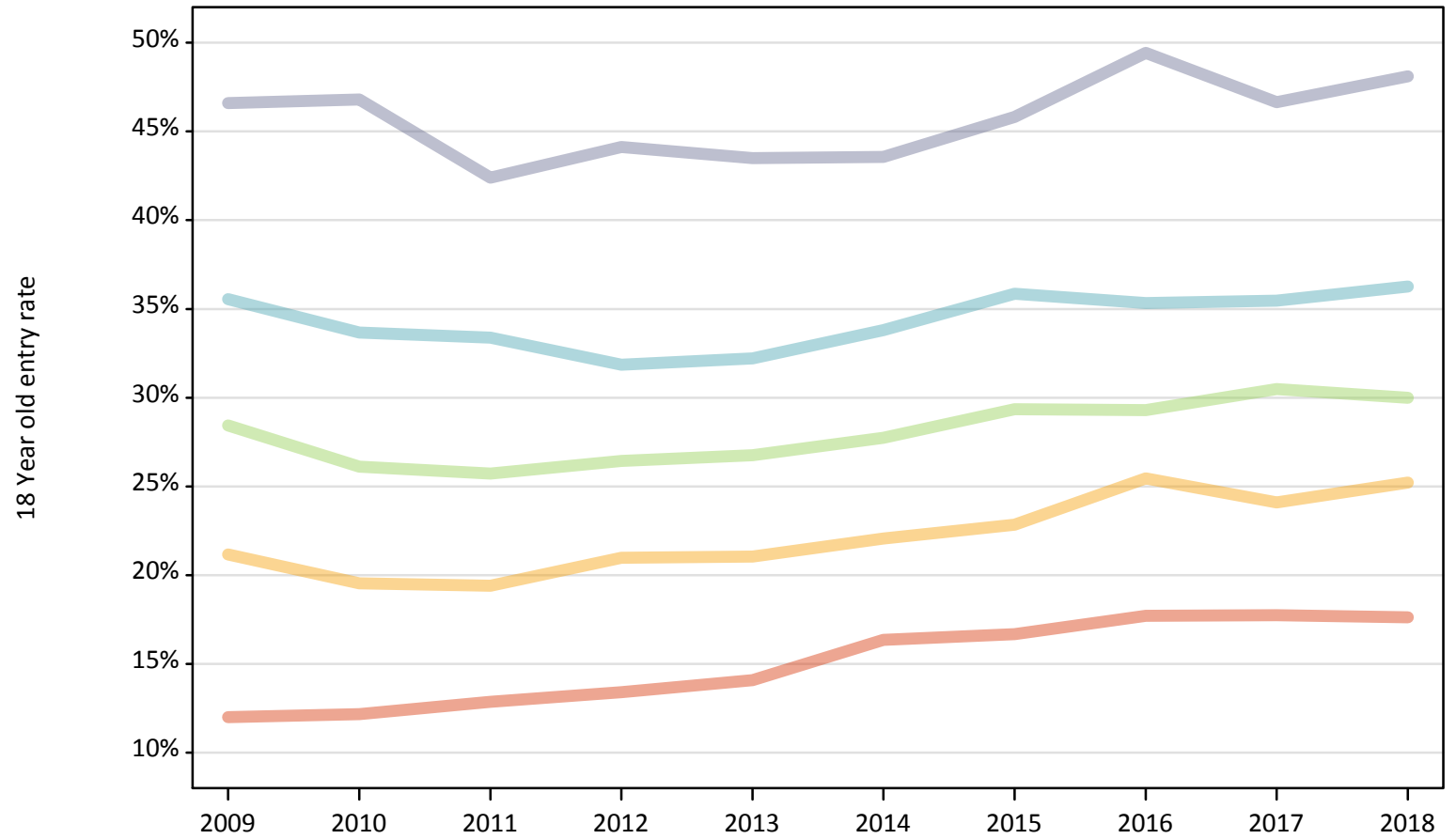
Applicant Status	POLAR4	2009	2010	2011	2012	2013	2014	2015	2016	2017	2018
Placed	Quintile 1	-14%	-17%	-19%	-17%	-16%	-3%	1%	5%	0%	-2%
	Quintile 2	0%	-8%	-11%	-4%	-5%	-2%	3%	7%	0%	-0%
	Quintile 3	3%	-3%	-11%	-6%	-9%	-7%	-1%	-4%	0%	-6%
	Quintile 4	6%	1%	2%	-4%	-2%	0%	7%	4%	0%	2%
	Quintile 5	2%	0%	-4%	2%	0%	2%	2%	8%	0%	-2%

Note: The percentage change is not recorded in the above table for groups with fewer than 10 placed applicants in that cycle or in the 2017 cycle.

**P.22 Placed 18 year old applicants from Wales by POLAR4 quintile: 13 days after A level results day**

Placed 18 year old applicants: entry rate

- Quintile 1
- Quintile 2
- Quintile 3
- Quintile 4
- Quintile 5



**P.23 Placed 18 year old applicants from Wales by POLAR4 quintile: 13 days after A level results day**

Placed 18 year old applicants: entry rate

Applicant Status	POLAR4	2009	2010	2011	2012	2013	2014	2015	2016	2017	2018
Placed	Quintile 1	12.0%	12.2%	12.9%	13.4%	14.1%	16.4%	16.7%	17.7%	17.7%	17.6%
	Quintile 2	21.2%	19.5%	19.4%	21.0%	21.1%	22.1%	22.8%	25.5%	24.1%	25.2%
	Quintile 3	28.4%	26.1%	25.7%	26.4%	26.8%	27.7%	29.3%	29.3%	30.5%	30.0%
	Quintile 4	35.6%	33.7%	33.4%	31.8%	32.2%	33.8%	35.9%	35.3%	35.5%	36.3%
	Quintile 5	46.6%	46.8%	42.4%	44.1%	43.5%	43.6%	45.8%	49.4%	46.6%	48.1%

**P.24 Placed 18 year old applicants from Wales by POLAR4 quintile: 13 days after A level results day**

Placed 18 year old applicants: entry rate (indexed to 100 = Quintile 1)

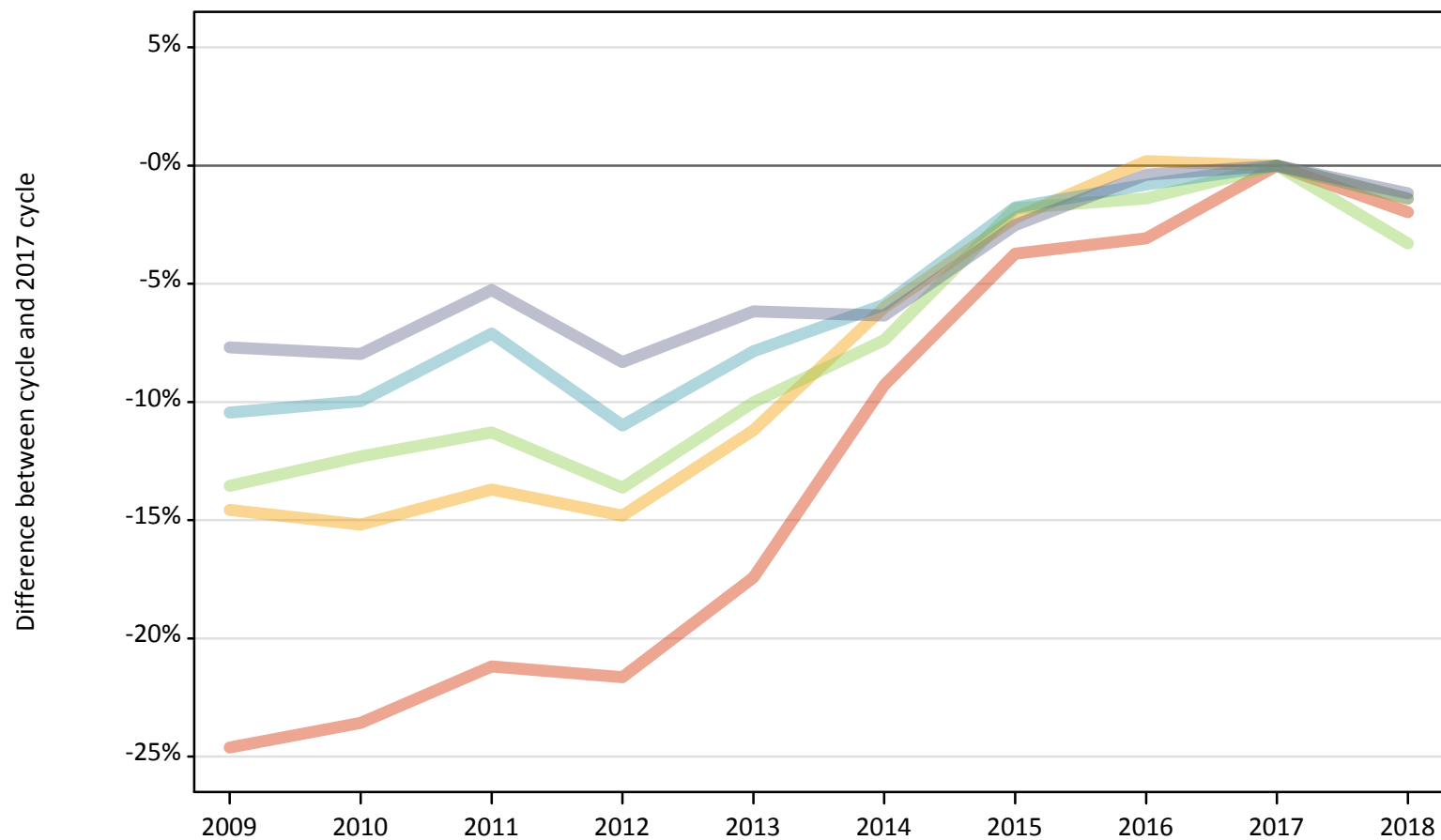
Applicant Status	POLAR4	2009	2010	2011	2012	2013	2014	2015	2016	2017	2018
Placed	Quintile 1	100	100	100	100	100	100	100	100	100	100
	Quintile 2	177	161	151	157	150	135	137	144	136	143
	Quintile 3	237	215	200	197	190	170	176	165	172	170
	Quintile 4	296	277	260	238	229	207	215	200	200	206
	Quintile 5	389	385	330	329	309	266	275	279	263	273



**P.25 Placed 18 year old applicants from the UK by POLAR4 quintile: 13 days after A level results day**

Placed 18 year old applicants: change relative to 2017 cycle totals

- Quintile 1
- Quintile 2
- Quintile 3
- Quintile 4
- Quintile 5



Note: The percentage change is not plotted in the above chart for groups with fewer than 30 placed applicants in any one cycle.

**P.26 Placed 18 year old applicants from the UK by POLAR4 quintile: 13 days after A level results day**

Applicant Status	POLAR4	2009	2010	2011	2012	2013	2014	2015	2016	2017	2018
Placed	Quintile 1	19,020	19,280	19,890	19,770	20,840	22,890	24,300	24,460	25,240	24,740
	Quintile 2	30,200	29,980	30,500	30,110	31,380	33,220	34,560	35,410	35,340	34,840
	Quintile 3	38,550	39,110	39,560	38,520	40,130	41,300	43,790	43,970	44,590	43,120
	Quintile 4	48,680	48,940	50,490	48,380	50,080	51,150	53,390	53,920	54,350	53,600
	Quintile 5	72,820	72,590	74,730	72,320	74,020	73,880	76,890	78,580	78,880	77,960

**P.27 Placed 18 year old applicants from the UK by POLAR4 quintile: 13 days after A level results day**

Placed 18 year old applicants: change relative to 2017 cycle totals

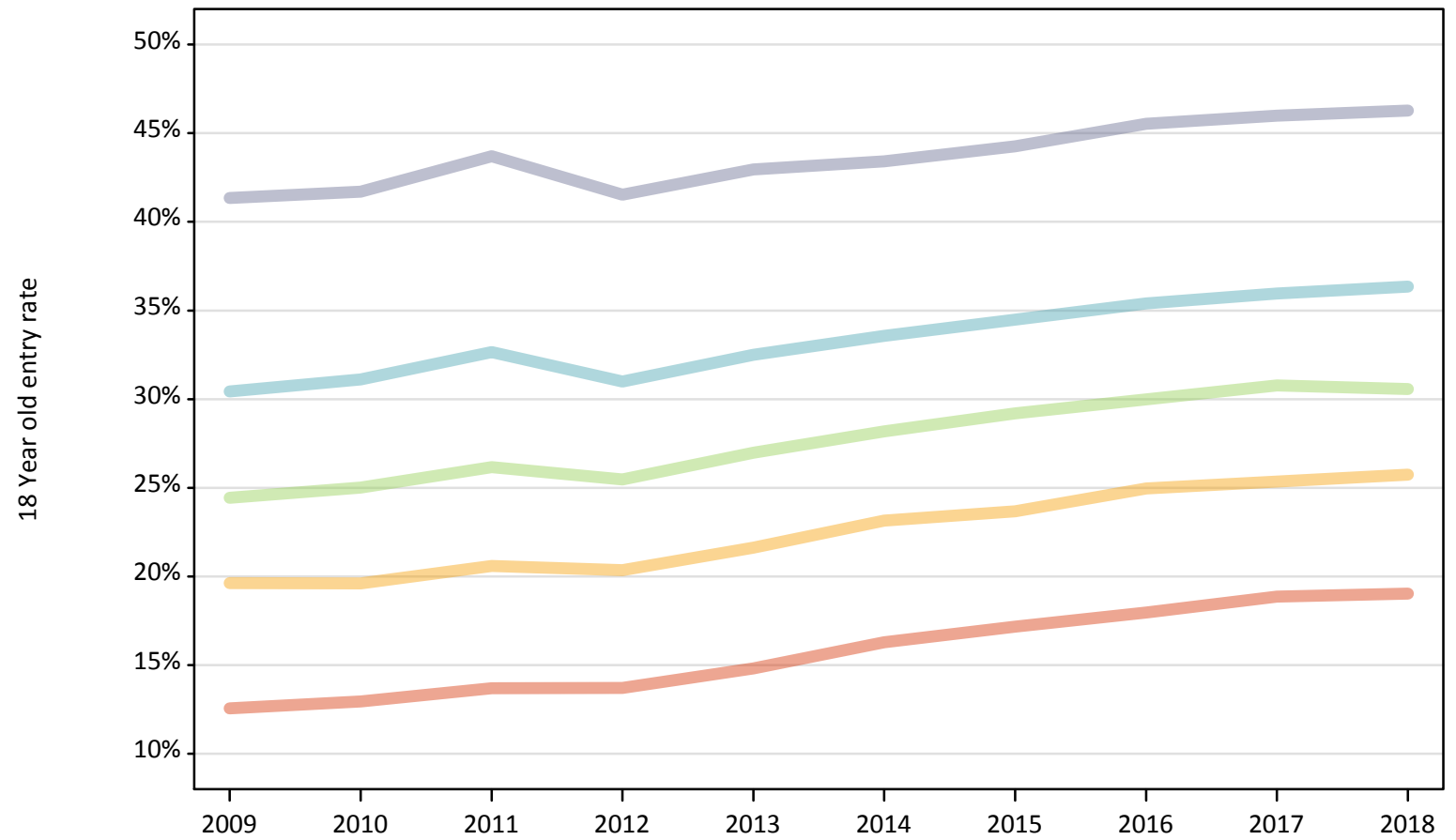
Applicant Status	POLAR4	2009	2010	2011	2012	2013	2014	2015	2016	2017	2018
Placed	Quintile 1	-25%	-24%	-21%	-22%	-17%	-9%	-4%	-3%	0%	-2%
	Quintile 2	-15%	-15%	-14%	-15%	-11%	-6%	-2%	0%	0%	-1%
	Quintile 3	-14%	-12%	-11%	-14%	-10%	-7%	-2%	-1%	0%	-3%
	Quintile 4	-10%	-10%	-7%	-11%	-8%	-6%	-2%	-1%	0%	-1%
	Quintile 5	-8%	-8%	-5%	-8%	-6%	-6%	-3%	-0%	0%	-1%

Note: The percentage change is not recorded in the above table for groups with fewer than 10 placed applicants in that cycle or in the 2017 cycle.

## P.28 Placed 18 year old applicants from the UK by POLAR4 quintile: 13 days after A level results day

Placed 18 year old applicants: entry rate

- Quintile 1
- Quintile 2
- Quintile 3
- Quintile 4
- Quintile 5



**P.29 Placed 18 year old applicants from the UK by POLAR4 quintile: 13 days after A level results day**

Placed 18 year old applicants: entry rate

Applicant Status	POLAR4	2009	2010	2011	2012	2013	2014	2015	2016	2017	2018
Placed	Quintile 1	12.6%	12.9%	13.7%	13.7%	14.8%	16.3%	17.2%	18.0%	18.9%	19.0%
	Quintile 2	19.6%	19.6%	20.6%	20.4%	21.6%	23.2%	23.7%	25.0%	25.3%	25.7%
	Quintile 3	24.4%	25.0%	26.2%	25.5%	27.0%	28.2%	29.2%	30.0%	30.8%	30.6%
	Quintile 4	30.4%	31.1%	32.7%	31.0%	32.5%	33.6%	34.5%	35.4%	36.0%	36.4%
	Quintile 5	41.3%	41.7%	43.7%	41.5%	43.0%	43.4%	44.3%	45.5%	46.0%	46.3%

**P.30 Placed 18 year old applicants from the UK by POLAR4 quintile: 13 days after A level results day**

Placed 18 year old applicants: entry rate (indexed to 100 = Quintile 1)

Applicant Status	POLAR4	2009	2010	2011	2012	2013	2014	2015	2016	2017	2018
Placed	Quintile 1	100	100	100	100	100	100	100	100	100	100
	Quintile 2	156	152	150	148	146	142	138	139	134	135
	Quintile 3	195	193	191	186	182	173	170	167	163	161
	Quintile 4	242	240	238	226	220	206	201	197	191	191
	Quintile 5	329	322	319	303	290	267	258	253	244	243