

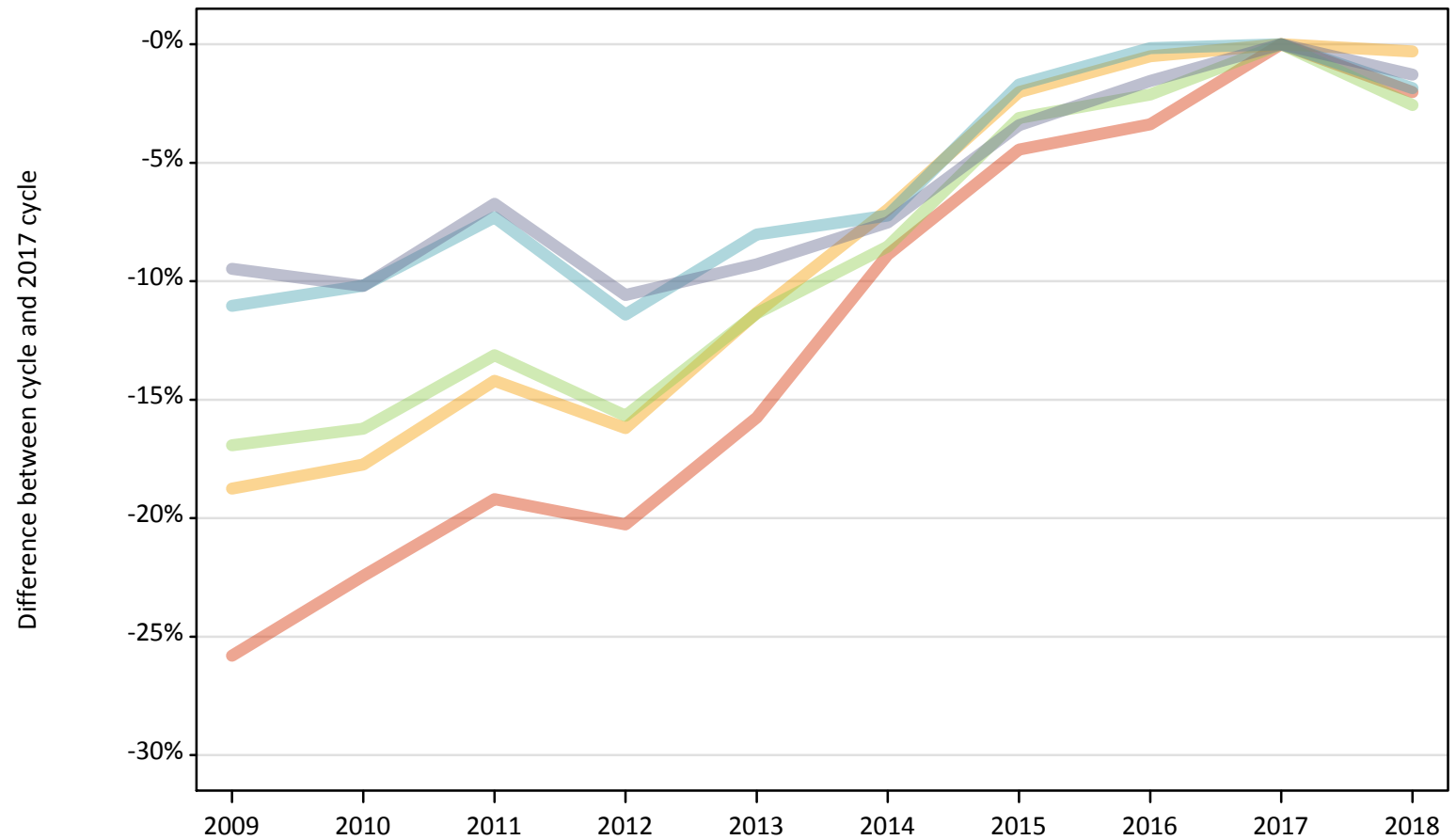
Daily Clearing Analysis: POLAR3

Analysis at 00:05 on Thursday 30 August 2018 (14 days after A level results day)

P.1 Placed 18 year old applicants from England by POLAR3 quintile: 14 days after A level results day

Placed 18 year old applicants: change relative to 2017 cycle totals

- Quintile 1
- Quintile 2
- Quintile 3
- Quintile 4
- Quintile 5



Note: The percentage change is not plotted in the above chart for groups with fewer than 30 placed applicants in any one cycle.

P.2 Placed 18 year old applicants from England by POLAR3 quintile: 14 days after A level results day

Applicant Status	POLAR3	2009	2010	2011	2012	2013	2014	2015	2016	2017	2018
Placed	Quintile 1	17,130	17,900	18,650	18,410	19,450	21,030	22,060	22,300	23,080	22,620
	Quintile 2	25,820	26,140	27,270	26,630	28,180	29,570	31,140	31,620	31,780	31,680
	Quintile 3	34,010	34,300	35,570	34,520	36,290	37,450	39,670	40,070	40,940	39,890
	Quintile 4	41,890	42,290	43,650	41,720	43,310	43,690	46,290	47,020	47,090	46,220
	Quintile 5	57,000	56,550	58,730	56,310	57,130	58,240	60,820	62,000	62,970	62,170

P.3 Placed 18 year old applicants from England by POLAR3 quintile: 14 days after A level results day

Placed 18 year old applicants: change relative to 2017 cycle totals

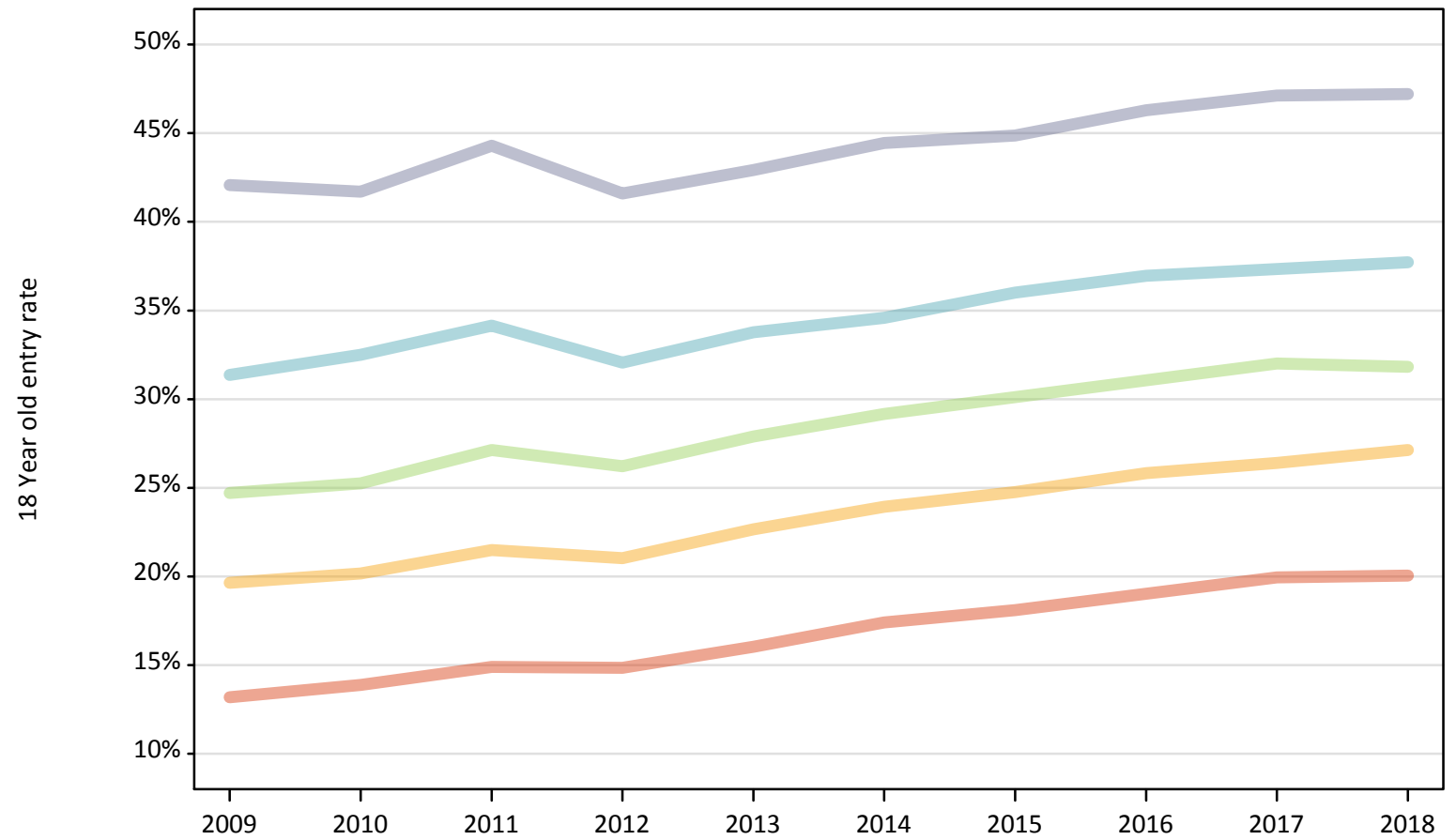
Applicant Status	POLAR3	2009	2010	2011	2012	2013	2014	2015	2016	2017	2018
Placed	Quintile 1	-26%	-22%	-19%	-20%	-16%	-9%	-4%	-3%	0%	-2%
	Quintile 2	-19%	-18%	-14%	-16%	-11%	-7%	-2%	-1%	0%	-0%
	Quintile 3	-17%	-16%	-13%	-16%	-11%	-9%	-3%	-2%	0%	-3%
	Quintile 4	-11%	-10%	-7%	-11%	-8%	-7%	-2%	-0%	0%	-2%
	Quintile 5	-9%	-10%	-7%	-11%	-9%	-8%	-3%	-2%	0%	-1%

Note: The percentage change is not recorded in the above table for groups with fewer than 10 placed applicants in that cycle or in the 2017 cycle.

P.4 Placed 18 year old applicants from England by POLAR3 quintile: 14 days after A level results day

Placed 18 year old applicants: entry rate

- Quintile 1
- Quintile 2
- Quintile 3
- Quintile 4
- Quintile 5



P.5 Placed 18 year old applicants from England by POLAR3 quintile: 14 days after A level results day

Placed 18 year old applicants: entry rate

Applicant Status	POLAR3	2009	2010	2011	2012	2013	2014	2015	2016	2017	2018
Placed	Quintile 1	13.2%	13.9%	14.9%	14.8%	16.0%	17.4%	18.1%	19.0%	19.9%	20.1%
	Quintile 2	19.6%	20.2%	21.5%	21.0%	22.7%	23.9%	24.8%	25.8%	26.4%	27.1%
	Quintile 3	24.7%	25.2%	27.1%	26.2%	27.9%	29.2%	30.1%	31.1%	32.0%	31.8%
	Quintile 4	31.4%	32.5%	34.1%	32.1%	33.8%	34.6%	36.0%	37.0%	37.3%	37.7%
	Quintile 5	42.1%	41.7%	44.3%	41.6%	42.9%	44.4%	44.9%	46.3%	47.1%	47.2%

P.6 Placed 18 year old applicants from England by POLAR3 quintile: 14 days after A level results day

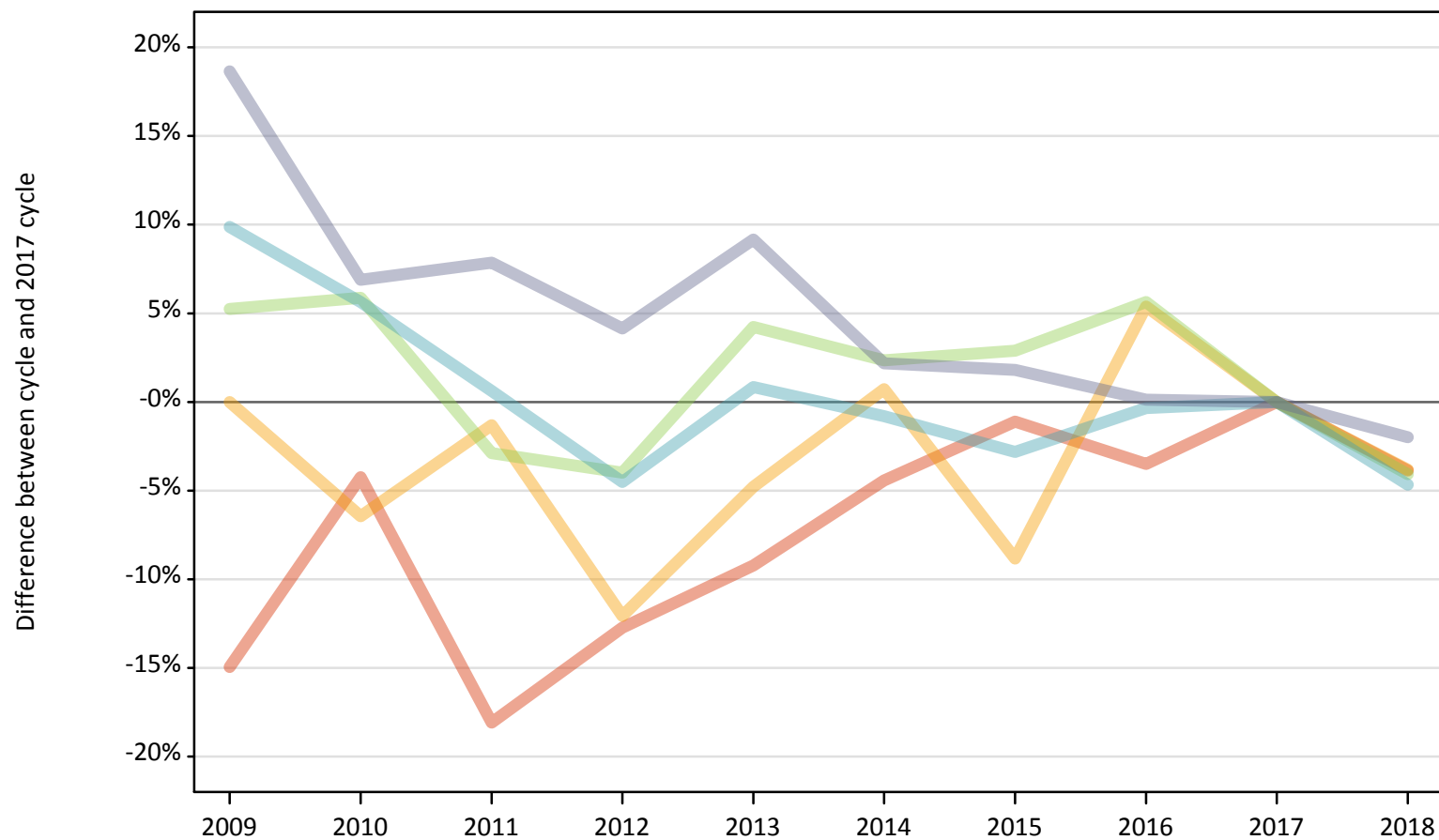
Placed 18 year old applicants: entry rate (indexed to 100 = Quintile 1)

Applicant Status	POLAR3	2009	2010	2011	2012	2013	2014	2015	2016	2017	2018
Placed	Quintile 1	100	100	100	100	100	100	100	100	100	100
	Quintile 2	149	145	144	142	141	137	137	136	132	135
	Quintile 3	187	182	182	177	174	168	167	163	161	159
	Quintile 4	238	234	229	216	211	199	199	194	187	188
	Quintile 5	319	300	297	280	268	255	248	244	236	235

P.7 Placed 18 year old applicants from Northern Ireland by POLAR3 quintile: 14 days after A level results day

Placed 18 year old applicants: change relative to 2017 cycle totals

- Quintile 1
- Quintile 2
- Quintile 3
- Quintile 4
- Quintile 5



Note: The percentage change is not plotted in the above chart for groups with fewer than 30 placed applicants in any one cycle.

P.8 Placed 18 year old applicants from Northern Ireland by POLAR3 quintile: 14 days after A level results day

Applicant Status	POLAR3	2009	2010	2011	2012	2013	2014	2015	2016	2017	2018
Placed	Quintile 1	460	520	440	470	490	520	540	520	540	520
	Quintile 2	840	780	830	740	800	840	760	880	840	810
	Quintile 3	1,350	1,350	1,240	1,230	1,330	1,310	1,320	1,350	1,280	1,230
	Quintile 4	2,850	2,740	2,610	2,480	2,620	2,570	2,520	2,590	2,590	2,470
	Quintile 5	3,810	3,430	3,460	3,340	3,500	3,280	3,270	3,210	3,210	3,140

P.9 Placed 18 year old applicants from Northern Ireland by POLAR3 quintile: 14 days after A level results day

Placed 18 year old applicants: change relative to 2017 cycle totals

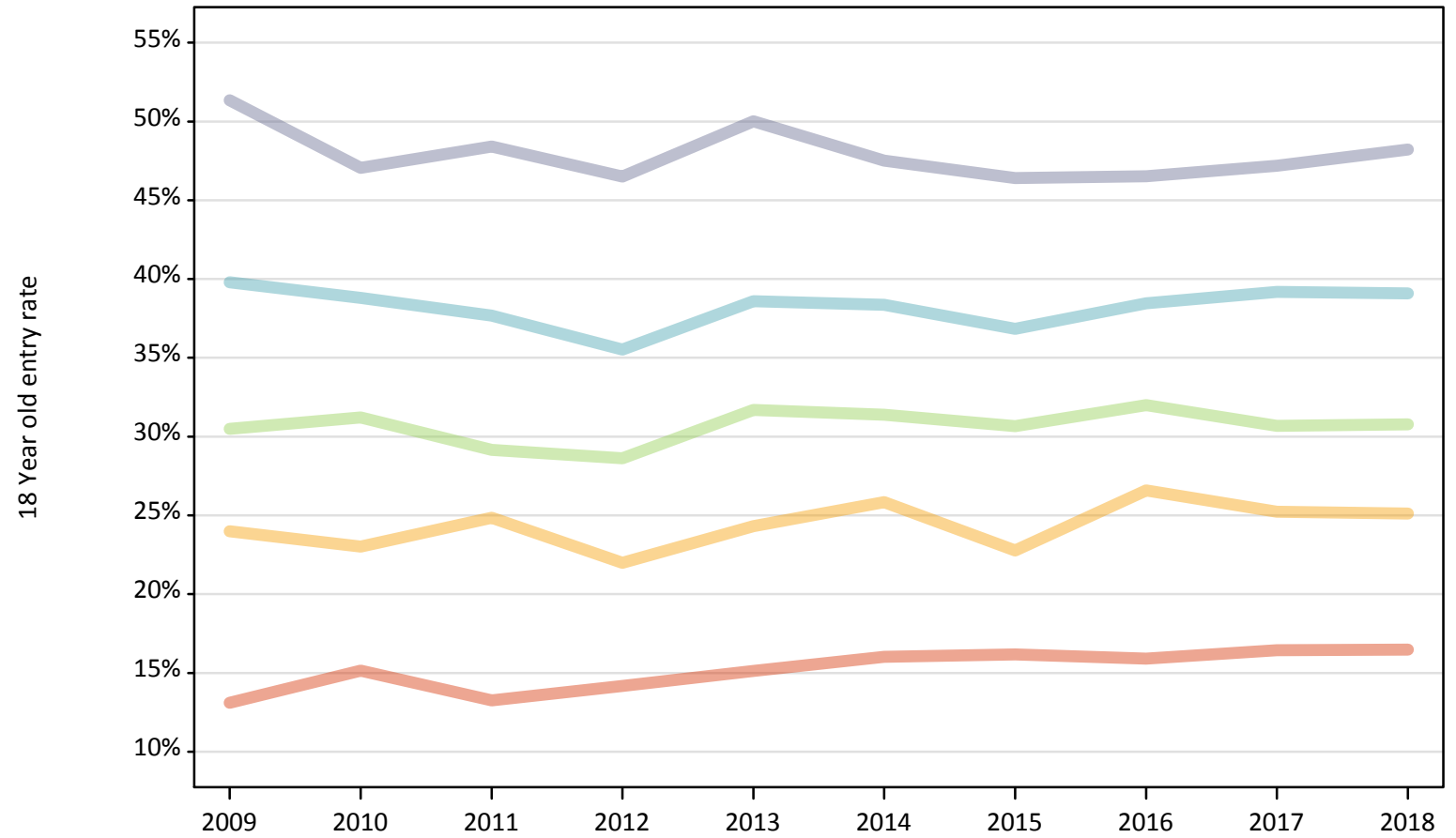
Applicant Status	POLAR3	2009	2010	2011	2012	2013	2014	2015	2016	2017	2018
Placed	Quintile 1	-15%	-4%	-18%	-13%	-9%	-4%	-1%	-4%	0%	-4%
	Quintile 2	0%	-6%	-1%	-12%	-5%	1%	-9%	5%	0%	-4%
	Quintile 3	5%	6%	-3%	-4%	4%	2%	3%	6%	0%	-4%
	Quintile 4	10%	6%	1%	-5%	1%	-1%	-3%	-0%	0%	-5%
	Quintile 5	19%	7%	8%	4%	9%	2%	2%	0%	0%	-2%

Note: The percentage change is not recorded in the above table for groups with fewer than 10 placed applicants in that cycle or in the 2017 cycle.

P.10 Placed 18 year old applicants from Northern Ireland by POLAR3 quintile: 14 days after A level results day

Placed 18 year old applicants: entry rate

- Quintile 1
- Quintile 2
- Quintile 3
- Quintile 4
- Quintile 5



P.11 Placed 18 year old applicants from Northern Ireland by POLAR3 quintile: 14 days after A level results day

Placed 18 year old applicants: entry rate

Applicant Status	POLAR3	2009	2010	2011	2012	2013	2014	2015	2016	2017	2018
Placed	Quintile 1	13.1%	15.1%	13.3%	14.2%	15.1%	16.0%	16.2%	15.9%	16.4%	16.5%
	Quintile 2	24.0%	23.0%	24.9%	22.0%	24.3%	25.8%	22.8%	26.6%	25.2%	25.1%
	Quintile 3	30.5%	31.2%	29.2%	28.6%	31.7%	31.4%	30.7%	32.0%	30.7%	30.8%
	Quintile 4	39.8%	38.8%	37.7%	35.5%	38.6%	38.4%	36.8%	38.4%	39.2%	39.1%
	Quintile 5	51.3%	47.1%	48.4%	46.5%	50.0%	47.5%	46.4%	46.5%	47.2%	48.2%

P.12 Placed 18 year old applicants from Northern Ireland by POLAR3 quintile: 14 days after A level results day

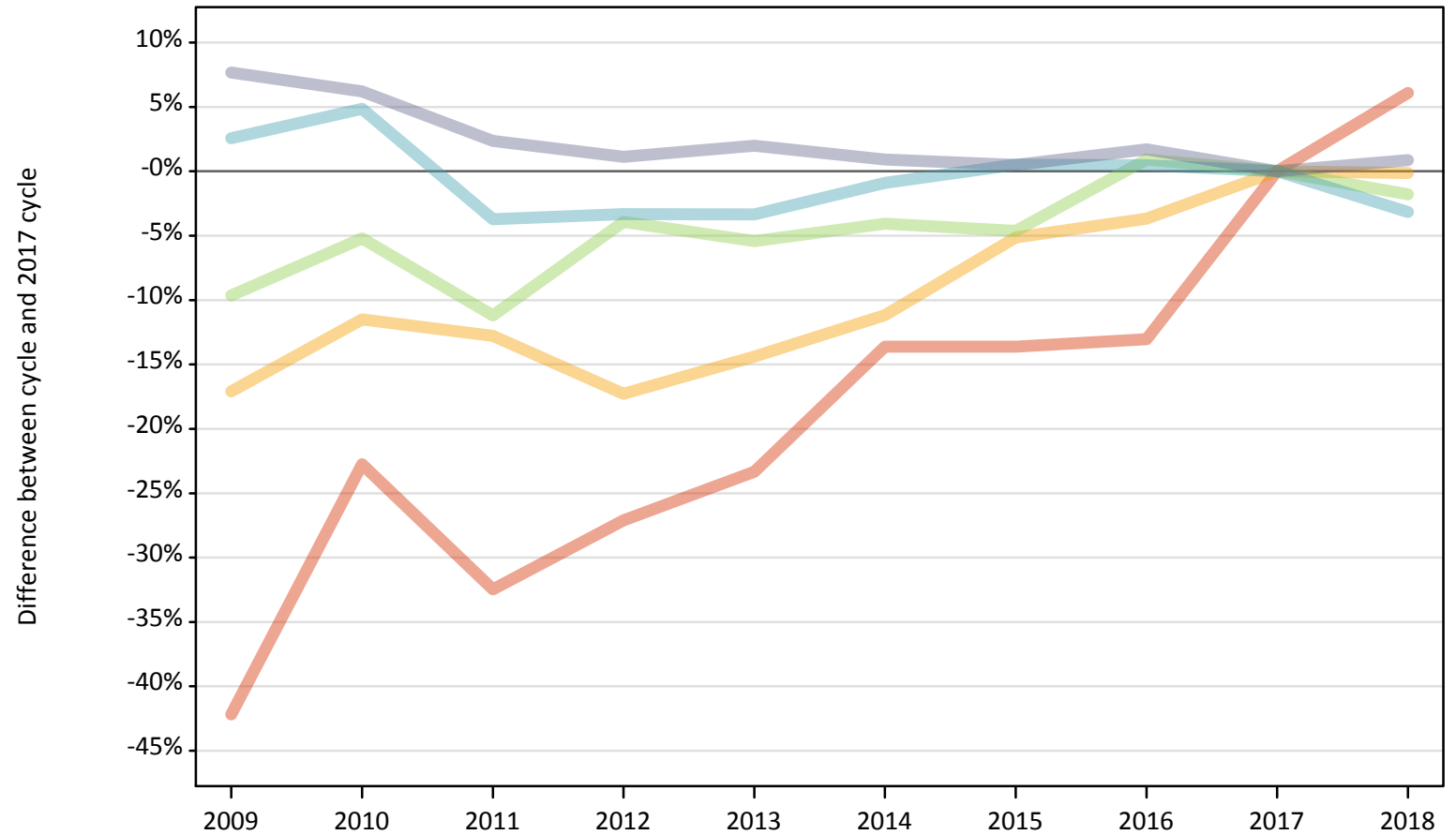
Placed 18 year old applicants: entry rate (indexed to 100 = Quintile 1)

Applicant Status	POLAR3	2009	2010	2011	2012	2013	2014	2015	2016	2017	2018
Placed	Quintile 1	100	100	100	100	100	100	100	100	100	100
	Quintile 2	183	152	187	155	161	161	141	167	153	152
	Quintile 3	233	206	220	202	209	196	190	201	187	187
	Quintile 4	304	256	284	251	255	239	228	242	238	237
	Quintile 5	392	311	365	328	330	297	287	292	287	292

P.13 Placed 18 year old applicants from Scotland by POLAR3 quintile: 14 days after A level results day

Placed 18 year old applicants: change relative to 2017 cycle totals

- Quintile 1
- Quintile 2
- Quintile 3
- Quintile 4
- Quintile 5



Note: The percentage change is not plotted in the above chart for groups with fewer than 30 placed applicants in any one cycle.

P.14 Placed 18 year old applicants from Scotland by POLAR3 quintile: 14 days after A level results day

Applicant Status	POLAR3	2009	2010	2011	2012	2013	2014	2015	2016	2017	2018
Placed	Quintile 1	400	530	470	500	530	600	600	600	690	730
	Quintile 2	1,290	1,380	1,360	1,290	1,330	1,380	1,480	1,500	1,560	1,560
	Quintile 3	2,070	2,170	2,030	2,200	2,160	2,190	2,180	2,310	2,290	2,250
	Quintile 4	3,500	3,580	3,290	3,300	3,300	3,380	3,430	3,430	3,410	3,300
	Quintile 5	7,180	7,080	6,830	6,740	6,800	6,730	6,700	6,780	6,670	6,730

P.15 Placed 18 year old applicants from Scotland by POLAR3 quintile: 14 days after A level results day

Placed 18 year old applicants: change relative to 2017 cycle totals

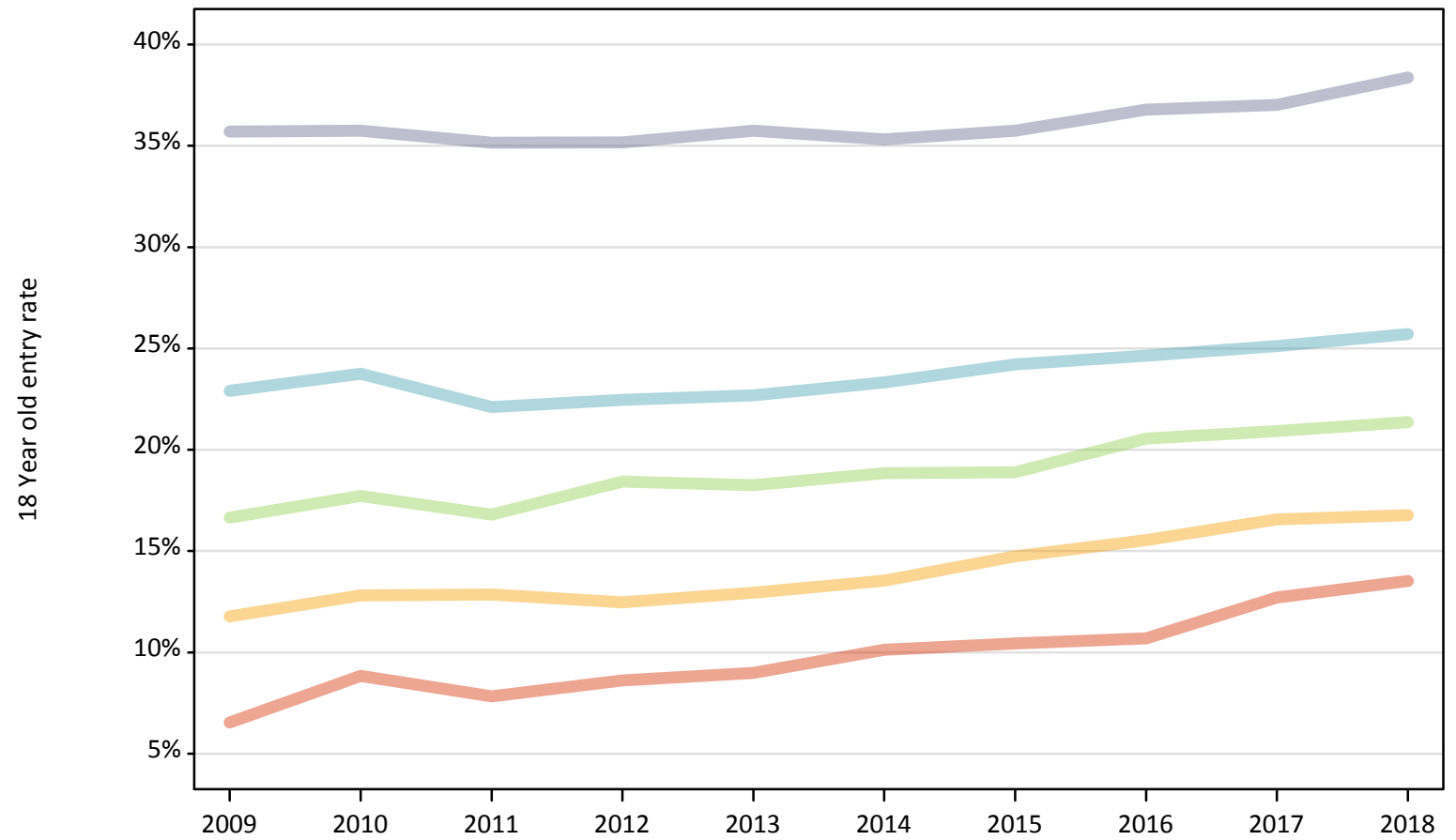
Applicant Status	POLAR3	2009	2010	2011	2012	2013	2014	2015	2016	2017	2018
Placed	Quintile 1	-42%	-23%	-32%	-27%	-23%	-14%	-14%	-13%	0%	6%
	Quintile 2	-17%	-11%	-13%	-17%	-14%	-11%	-5%	-4%	0%	-0%
	Quintile 3	-10%	-5%	-11%	-4%	-5%	-4%	-5%	1%	0%	-2%
	Quintile 4	3%	5%	-4%	-3%	-3%	-1%	1%	0%	0%	-3%
	Quintile 5	8%	6%	2%	1%	2%	1%	1%	2%	0%	1%

Note: The percentage change is not recorded in the above table for groups with fewer than 10 placed applicants in that cycle or in the 2017 cycle.

P.16 Placed 18 year old applicants from Scotland by POLAR3 quintile: 14 days after A level results day

Placed 18 year old applicants: entry rate

- Quintile 1
- Quintile 2
- Quintile 3
- Quintile 4
- Quintile 5



P.17 Placed 18 year old applicants from Scotland by POLAR3 quintile: 14 days after A level results day

Placed 18 year old applicants: entry rate

Applicant Status	POLAR3	2009	2010	2011	2012	2013	2014	2015	2016	2017	2018
Placed	Quintile 1	6.5%	8.8%	7.8%	8.6%	9.0%	10.1%	10.4%	10.7%	12.7%	13.5%
	Quintile 2	11.8%	12.8%	12.9%	12.5%	12.9%	13.5%	14.7%	15.5%	16.6%	16.8%
	Quintile 3	16.6%	17.7%	16.8%	18.4%	18.3%	18.8%	18.9%	20.6%	20.9%	21.4%
	Quintile 4	22.9%	23.8%	22.1%	22.5%	22.7%	23.3%	24.2%	24.6%	25.1%	25.7%
	Quintile 5	35.7%	35.7%	35.2%	35.2%	35.8%	35.3%	35.8%	36.8%	37.0%	38.4%

P.18 Placed 18 year old applicants from Scotland by POLAR3 quintile: 14 days after A level results day

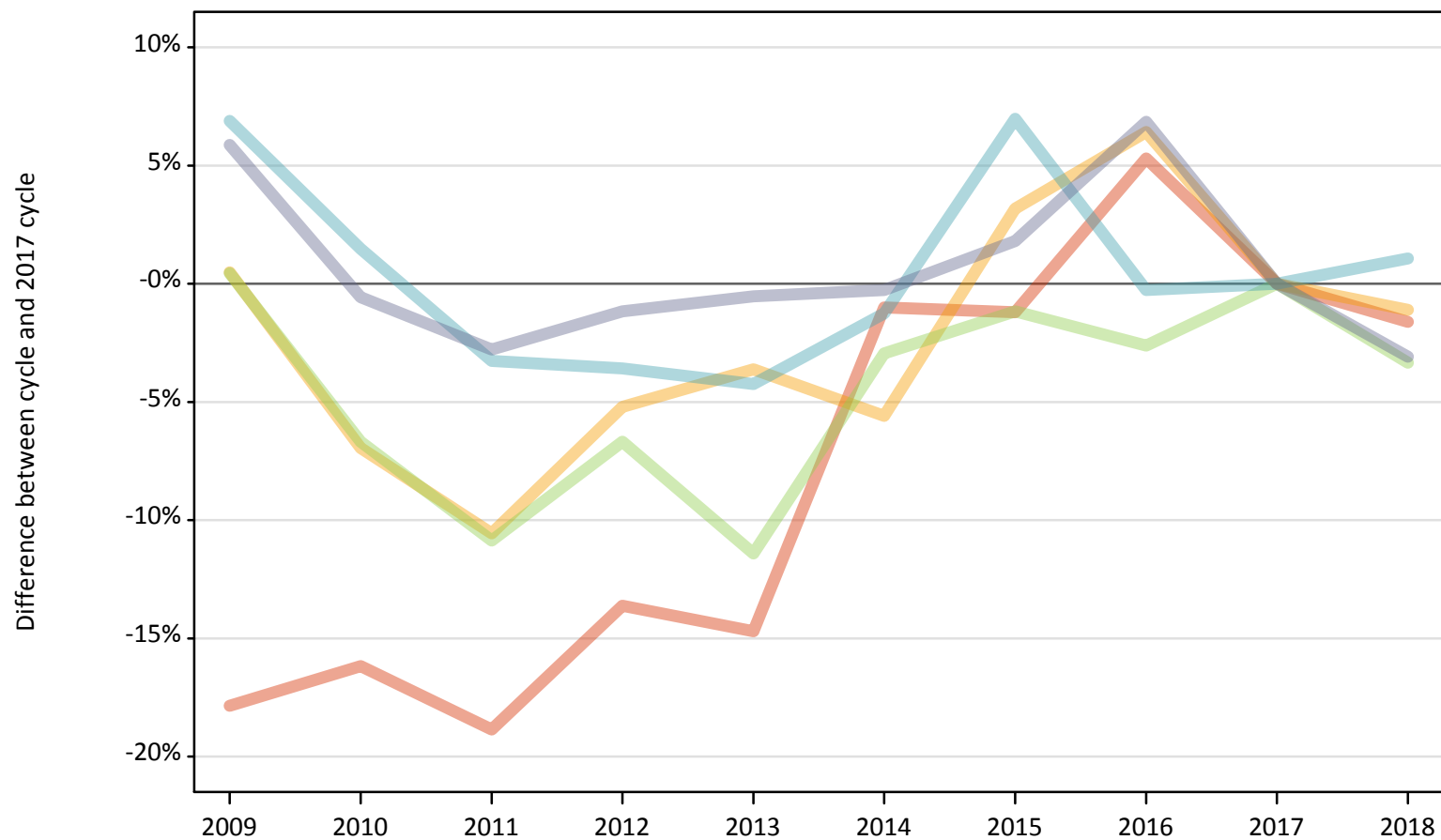
Placed 18 year old applicants: entry rate (indexed to 100 = Quintile 1)

Applicant Status	POLAR3	2009	2010	2011	2012	2013	2014	2015	2016	2017	2018
Placed	Quintile 1	100	100	100	100	100	100	100	100	100	100
	Quintile 2	180	145	164	145	144	134	141	145	130	124
	Quintile 3	254	200	214	214	203	186	181	192	165	158
	Quintile 4	350	269	282	261	252	230	232	230	198	190
	Quintile 5	545	404	449	408	398	349	342	344	291	284

P.19 Placed 18 year old applicants from Wales by POLAR3 quintile: 14 days after A level results day

Placed 18 year old applicants: change relative to 2017 cycle totals

- Quintile 1
- Quintile 2
- Quintile 3
- Quintile 4
- Quintile 5



Note: The percentage change is not plotted in the above chart for groups with fewer than 30 placed applicants in any one cycle.

P.20 Placed 18 year old applicants from Wales by POLAR3 quintile: 14 days after A level results day

Applicant Status	POLAR3	2009	2010	2011	2012	2013	2014	2015	2016	2017	2018
Placed	Quintile 1	1,220	1,250	1,210	1,290	1,270	1,480	1,470	1,570	1,490	1,470
	Quintile 2	2,080	1,930	1,850	1,970	2,000	1,960	2,140	2,210	2,070	2,050
	Quintile 3	1,800	1,680	1,600	1,680	1,590	1,740	1,780	1,750	1,800	1,740
	Quintile 4	2,390	2,270	2,160	2,160	2,140	2,210	2,390	2,230	2,240	2,260
	Quintile 5	2,810	2,640	2,580	2,620	2,640	2,650	2,700	2,840	2,660	2,570

P.21 Placed 18 year old applicants from Wales by POLAR3 quintile: 14 days after A level results day

Placed 18 year old applicants: change relative to 2017 cycle totals

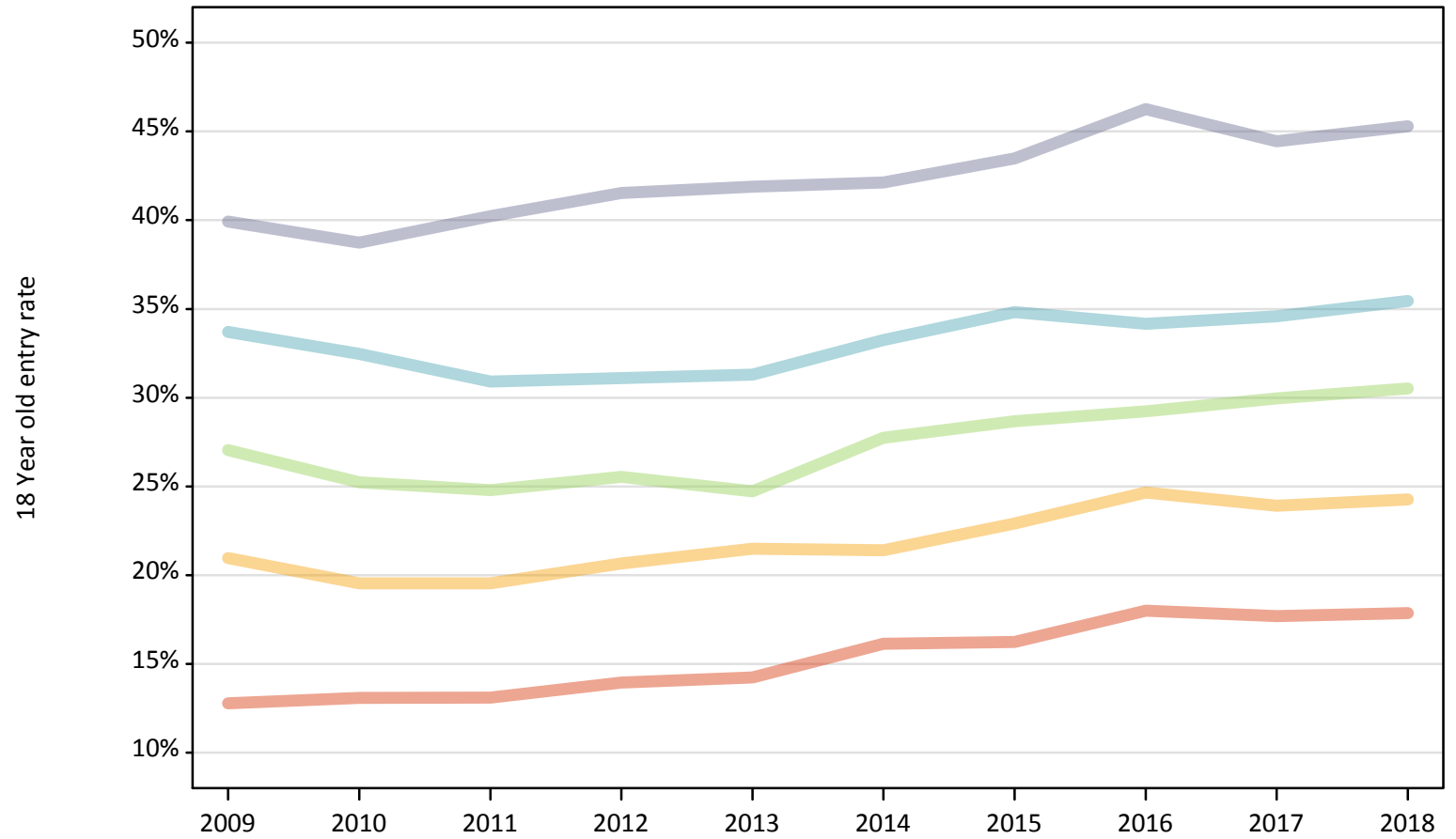
Applicant Status	POLAR3	2009	2010	2011	2012	2013	2014	2015	2016	2017	2018
Placed	Quintile 1	-18%	-16%	-19%	-14%	-15%	-1%	-1%	5%	0%	-2%
	Quintile 2	0%	-7%	-11%	-5%	-4%	-6%	3%	6%	0%	-1%
	Quintile 3	0%	-7%	-11%	-7%	-11%	-3%	-1%	-3%	0%	-3%
	Quintile 4	7%	1%	-3%	-4%	-4%	-1%	7%	-0%	0%	1%
	Quintile 5	6%	-1%	-3%	-1%	-1%	-0%	2%	7%	0%	-3%

Note: The percentage change is not recorded in the above table for groups with fewer than 10 placed applicants in that cycle or in the 2017 cycle.

P.22 Placed 18 year old applicants from Wales by POLAR3 quintile: 14 days after A level results day

Placed 18 year old applicants: entry rate

- Quintile 1
- Quintile 2
- Quintile 3
- Quintile 4
- Quintile 5



P.23 Placed 18 year old applicants from Wales by POLAR3 quintile: 14 days after A level results day

Placed 18 year old applicants: entry rate

Applicant Status	POLAR3	2009	2010	2011	2012	2013	2014	2015	2016	2017	2018
Placed	Quintile 1	12.8%	13.1%	13.1%	13.9%	14.2%	16.1%	16.2%	18.0%	17.7%	17.9%
	Quintile 2	21.0%	19.5%	19.5%	20.7%	21.5%	21.4%	22.9%	24.7%	23.9%	24.3%
	Quintile 3	27.0%	25.2%	24.8%	25.5%	24.7%	27.7%	28.7%	29.2%	30.0%	30.5%
	Quintile 4	33.7%	32.5%	30.9%	31.1%	31.3%	33.3%	34.8%	34.2%	34.6%	35.4%
	Quintile 5	39.9%	38.7%	40.2%	41.5%	41.9%	42.1%	43.5%	46.3%	44.4%	45.3%

P.24 Placed 18 year old applicants from Wales by POLAR3 quintile: 14 days after A level results day

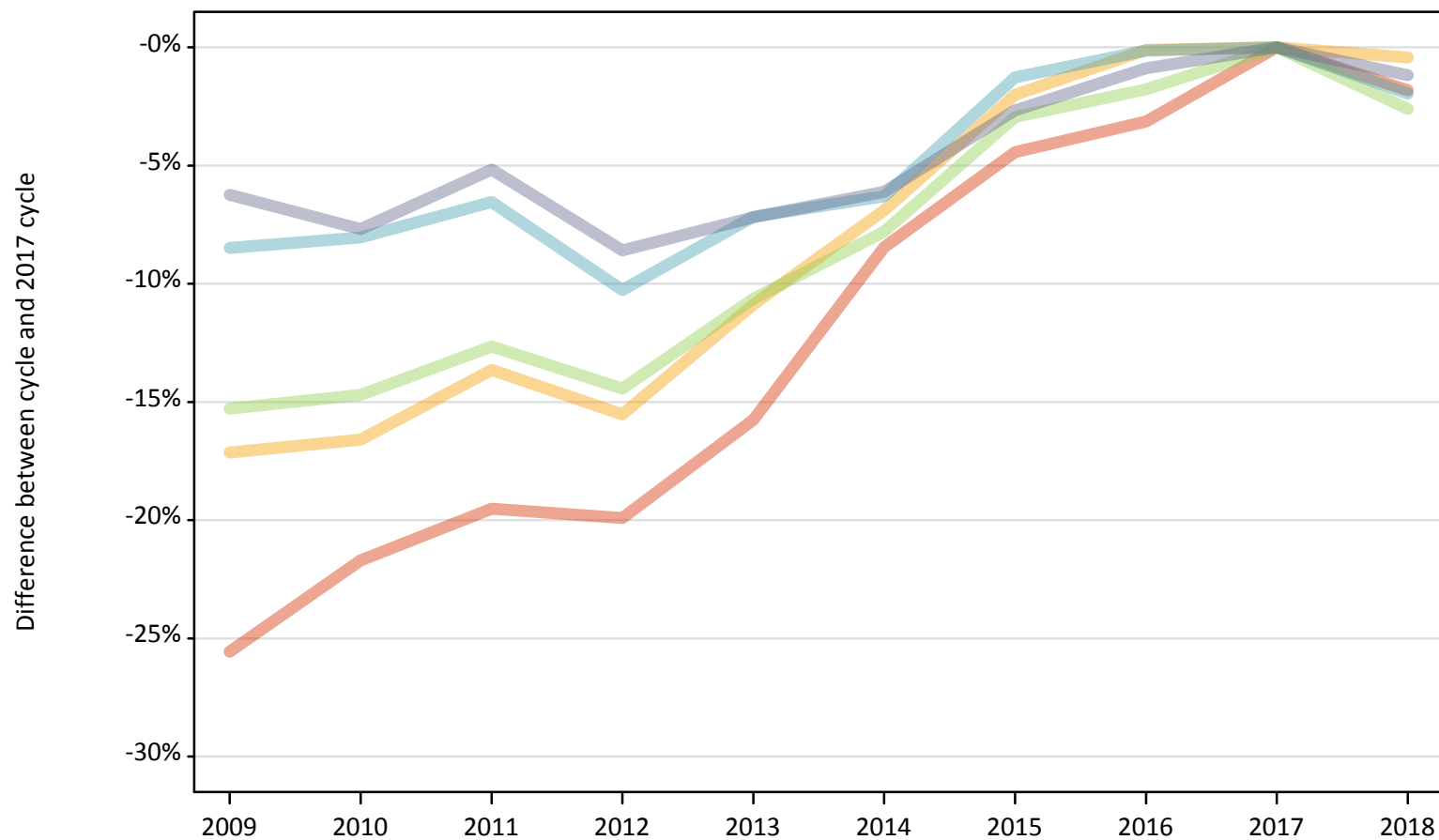
Placed 18 year old applicants: entry rate (indexed to 100 = Quintile 1)

Applicant Status	POLAR3	2009	2010	2011	2012	2013	2014	2015	2016	2017	2018
Placed	Quintile 1	100	100	100	100	100	100	100	100	100	100
	Quintile 2	164	149	149	148	151	133	141	137	135	136
	Quintile 3	212	193	189	183	174	172	177	162	169	171
	Quintile 4	264	248	236	223	220	206	214	190	196	198
	Quintile 5	312	296	307	298	294	261	268	257	251	254

P.25 Placed 18 year old applicants from the UK by POLAR3 quintile: 14 days after A level results day

Placed 18 year old applicants: change relative to 2017 cycle totals

- Quintile 1
- Quintile 2
- Quintile 3
- Quintile 4
- Quintile 5



Note: The percentage change is not plotted in the above chart for groups with fewer than 30 placed applicants in any one cycle.

P.26 Placed 18 year old applicants from the UK by POLAR3 quintile: 14 days after A level results day

Applicant Status	POLAR3	2009	2010	2011	2012	2013	2014	2015	2016	2017	2018
Placed	Quintile 1	19,210	20,210	20,770	20,670	21,740	23,620	24,660	25,000	25,810	25,340
	Quintile 2	30,030	30,230	31,300	30,620	32,310	33,750	35,520	36,210	36,250	36,090
	Quintile 3	39,230	39,500	40,440	39,620	41,380	42,690	44,940	45,480	46,300	45,100
	Quintile 4	50,630	50,880	51,710	49,650	51,370	51,850	54,630	55,260	55,330	54,260
	Quintile 5	70,800	69,700	71,600	69,020	70,070	70,890	73,490	74,830	75,500	74,610

P.27 Placed 18 year old applicants from the UK by POLAR3 quintile: 14 days after A level results day

Placed 18 year old applicants: change relative to 2017 cycle totals

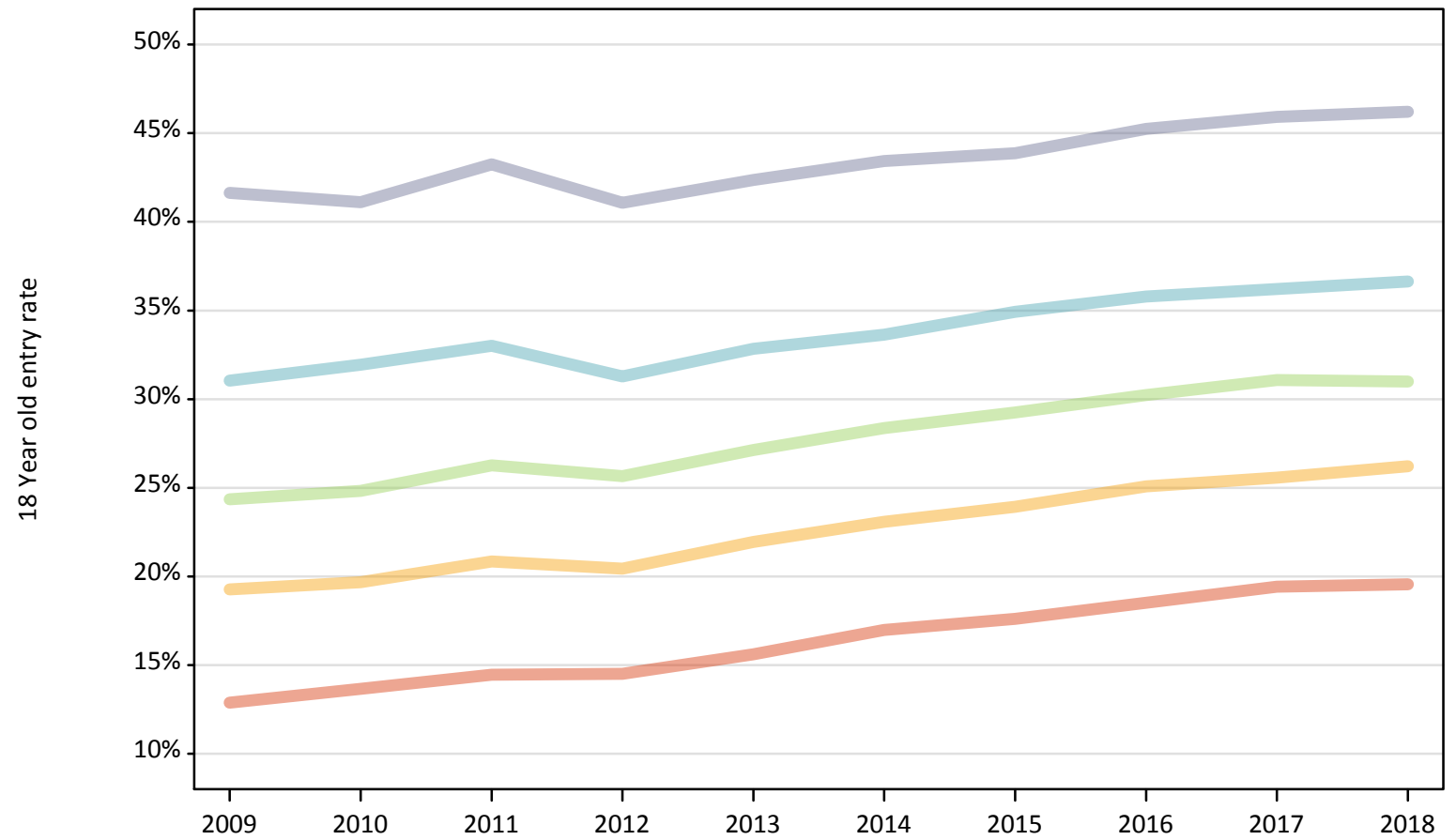
Applicant Status	POLAR3	2009	2010	2011	2012	2013	2014	2015	2016	2017	2018
Placed	Quintile 1	-26%	-22%	-20%	-20%	-16%	-8%	-4%	-3%	0%	-2%
	Quintile 2	-17%	-17%	-14%	-16%	-11%	-7%	-2%	-0%	0%	-0%
	Quintile 3	-15%	-15%	-13%	-14%	-11%	-8%	-3%	-2%	0%	-3%
	Quintile 4	-8%	-8%	-7%	-10%	-7%	-6%	-1%	-0%	0%	-2%
	Quintile 5	-6%	-8%	-5%	-9%	-7%	-6%	-3%	-1%	0%	-1%

Note: The percentage change is not recorded in the above table for groups with fewer than 10 placed applicants in that cycle or in the 2017 cycle.

P.28 Placed 18 year old applicants from the UK by POLAR3 quintile: 14 days after A level results day

Placed 18 year old applicants: entry rate

- Quintile 1
- Quintile 2
- Quintile 3
- Quintile 4
- Quintile 5



P.29 Placed 18 year old applicants from the UK by POLAR3 quintile: 14 days after A level results day

Placed 18 year old applicants: entry rate

Applicant Status	POLAR3	2009	2010	2011	2012	2013	2014	2015	2016	2017	2018
Placed	Quintile 1	12.9%	13.7%	14.5%	14.5%	15.6%	17.0%	17.6%	18.5%	19.4%	19.6%
	Quintile 2	19.3%	19.7%	20.8%	20.4%	21.9%	23.1%	23.9%	25.1%	25.6%	26.2%
	Quintile 3	24.3%	24.8%	26.3%	25.6%	27.1%	28.4%	29.2%	30.2%	31.1%	31.0%
	Quintile 4	31.0%	31.9%	33.0%	31.3%	32.8%	33.6%	34.9%	35.8%	36.2%	36.6%
	Quintile 5	41.6%	41.1%	43.2%	41.1%	42.4%	43.4%	43.9%	45.2%	45.9%	46.2%

P.30 Placed 18 year old applicants from the UK by POLAR3 quintile: 14 days after A level results day

Placed 18 year old applicants: entry rate (indexed to 100 = Quintile 1)

Applicant Status	POLAR3	2009	2010	2011	2012	2013	2014	2015	2016	2017	2018
Placed	Quintile 1	100	100	100	100	100	100	100	100	100	100
	Quintile 2	150	144	144	141	141	136	136	135	132	134
	Quintile 3	189	182	182	177	174	167	166	163	160	158
	Quintile 4	241	234	228	216	211	198	198	193	187	187
	Quintile 5	323	301	299	283	272	256	249	244	237	236