

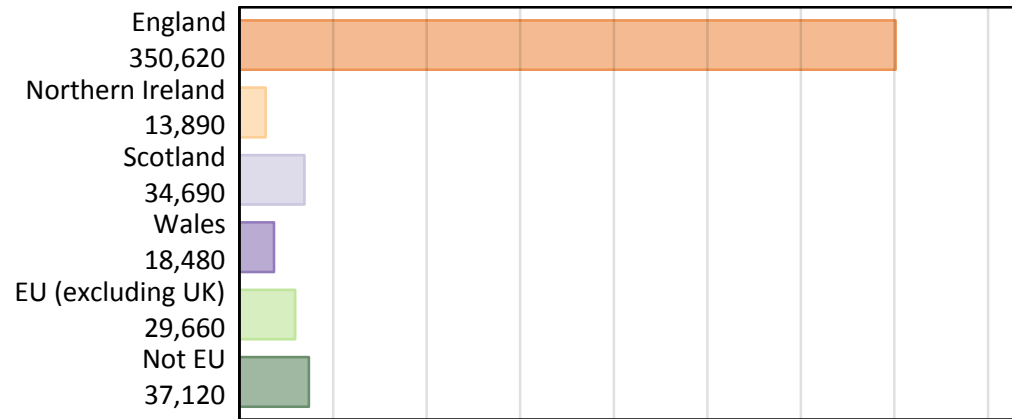
Daily Clearing Analysis: Country

Analysis at 00:05 on Friday 31 August 2018 (15 days after A level results day)

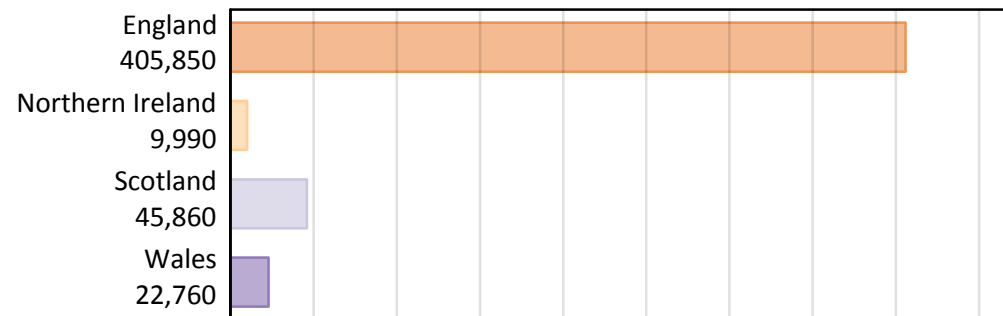
B.1 Placed applicants by country of provider and domicile, 2018 cycle

Domicile of applicant	Country of provider				
	England	Northern Ireland	Scotland	Wales	UK
England	335,840	320	4,590	9,880	350,620
Northern Ireland	3,790	8,980	980	140	13,890
Scotland	1,480	30	33,150	40	34,690
Wales	7,770	10	140	10,560	18,480
EU (excluding UK)	24,100	390	4,050	1,120	29,660
Not EU	32,880	270	2,950	1,020	37,120
All	405,850	9,990	45,860	22,760	484,460

B.2 Placed applicants by domicile group



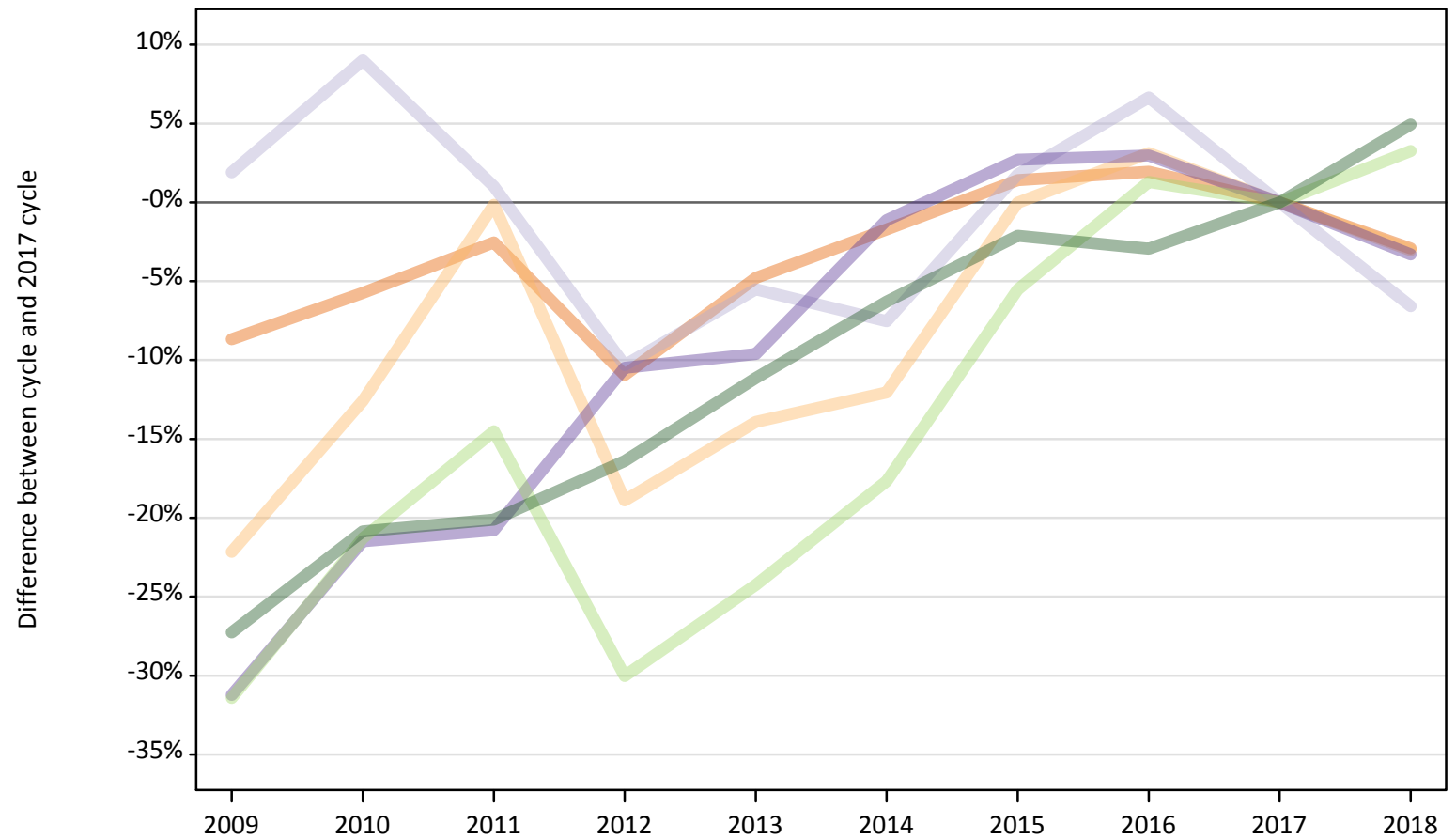
B.3 Placed applicants by country of provider



B.4 Placed applicants at 15 days after A level results day: providers in England

Selected applicant domiciles: difference between cycle and 2017 cycle (at 15 days after A level results day)

- England
- Northern Ireland
- Scotland
- Wales
- EU (excluding UK)
- Not EU



Note: The percentage change is not plotted in the above chart for groups with fewer than 30 placed applicants in any one cycle.

B.5 Placed applicants at 15 days after A level results day: providers in England

Placed applicants by domicile (at 15 days after A level results day)

Domicile of applicant	2009	2010	2011	2012	2013	2014	2015	2016	2017	2018
England	315,880	326,050	337,180	308,070	329,350	339,980	350,810	352,630	345,930	335,840
Northern Ireland	3,040	3,420	3,900	3,170	3,370	3,440	3,910	4,030	3,910	3,790
Scotland	1,610	1,720	1,600	1,420	1,490	1,460	1,610	1,680	1,580	1,480
Wales	5,530	6,310	6,370	7,190	7,260	7,950	8,250	8,270	8,040	7,770
EU (excluding UK)	16,000	18,370	19,950	16,330	17,680	19,210	22,050	23,640	23,340	24,100
Not EU	22,790	24,800	25,030	26,190	27,850	29,360	30,670	30,410	31,330	32,880

B.6 Placed applicants at 15 days after A level results day: providers in England

Selected applicant domiciles: difference between cycle and 2017 cycle (at 15 days after A level results day)

Domicile of applicant	2009	2010	2011	2012	2013	2014	2015	2016	2017	2018
England	-9%	-6%	-3%	-11%	-5%	-2%	1%	2%	0%	-3%
Northern Ireland	-22%	-13%	-0%	-19%	-14%	-12%	-0%	3%	0%	-3%
Scotland	2%	9%	1%	-10%	-6%	-8%	2%	7%	0%	-7%
Wales	-31%	-21%	-21%	-10%	-10%	-1%	3%	3%	0%	-3%
EU (excluding UK)	-31%	-21%	-15%	-30%	-24%	-18%	-6%	1%	0%	3%
Not EU	-27%	-21%	-20%	-16%	-11%	-6%	-2%	-3%	0%	5%

Note: The percentage change is not recorded in the above table for groups with fewer than 10 placed applicants in that cycle or in the 2017 cycle.

B.7 Placed applicants at 15 days after A level results day: providers in Northern Ireland
Selected applicant domiciles: difference between cycle and 2017 cycle (at 15 days after A level results day)

- England
- Northern Ireland
- Scotland
- Wales
- EU (excluding UK)
- Not EU



Note: The percentage change is not plotted in the above chart for groups with fewer than 30 placed applicants in any one cycle.

B.8 Placed applicants at 15 days after A level results day: providers in Northern Ireland

Placed applicants by domicile (at 15 days after A level results day)

Domicile of applicant	2009	2010	2011	2012	2013	2014	2015	2016	2017	2018
England	270	220	240	260	260	440	570	320	340	320
Northern Ireland	9,200	8,830	8,440	8,750	9,710	9,680	8,750	9,350	9,060	8,980
Scotland	20	20	20	30	20	20	20	20	30	30
Wales	10	10	10	0	10	10	10	10	20	10
EU (excluding UK)	500	600	430	420	440	470	400	350	370	390
Not EU	60	70	110	170	180	200	170	230	220	270

B.9 Placed applicants at 15 days after A level results day: providers in Northern Ireland

Selected applicant domiciles: difference between cycle and 2017 cycle (at 15 days after A level results day)

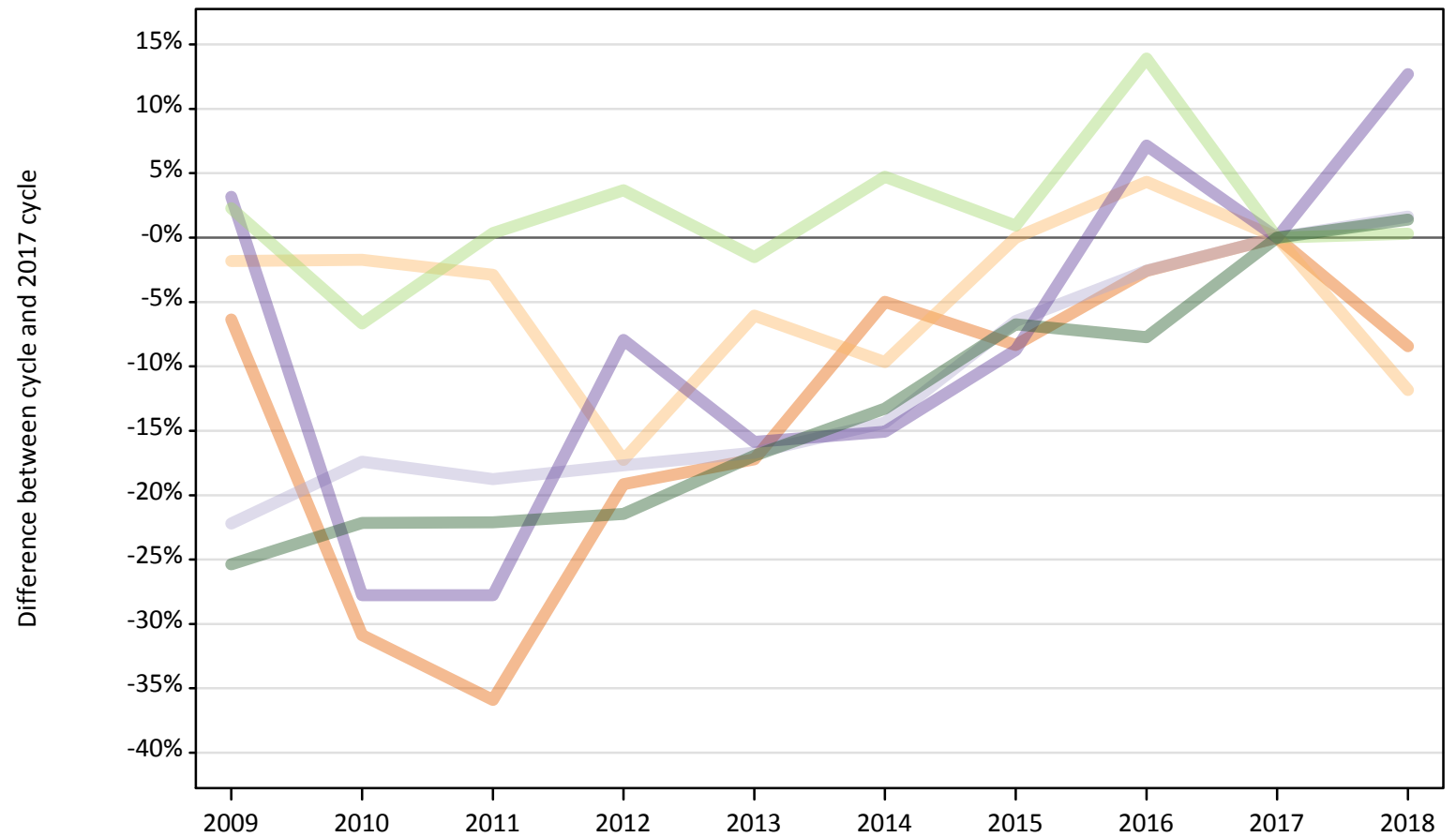
Domicile of applicant	2009	2010	2011	2012	2013	2014	2015	2016	2017	2018
England	-20%	-34%	-28%	-24%	-22%	32%	68%	-6%	0%	-5%
Northern Ireland	2%	-3%	-7%	-3%	7%	7%	-3%	3%	0%	-1%
Scotland	-47%	-28%	-41%	-19%	-53%	-47%	-38%	-41%	0%	-16%
Wales	-20%	-53%	-47%		-67%	-47%	-13%	-27%	0%	-33%
EU (excluding UK)	35%	63%	16%	14%	18%	26%	9%	-5%	0%	6%
Not EU	-70%	-69%	-47%	-22%	-15%	-5%	-23%	7%	0%	24%

Note: The percentage change is not recorded in the above table for groups with fewer than 10 placed applicants in that cycle or in the 2017 cycle.

B.10 Placed applicants at 15 days after A level results day: providers in Scotland

Selected applicant domiciles: difference between cycle and 2017 cycle (at 15 days after A level results day)

- England
- Northern Ireland
- Scotland
- Wales
- EU (excluding UK)
- Not EU



Note: The percentage change is not plotted in the above chart for groups with fewer than 30 placed applicants in any one cycle.

B.11 Placed applicants at 15 days after A level results day: providers in Scotland

Placed applicants by domicile (at 15 days after A level results day)

Domicile of applicant	2009	2010	2011	2012	2013	2014	2015	2016	2017	2018
England	4,690	3,470	3,210	4,050	4,150	4,760	4,600	4,880	5,010	4,590
Northern Ireland	1,090	1,090	1,070	920	1,040	1,000	1,110	1,150	1,110	980
Scotland	25,370	26,940	26,500	26,850	27,170	27,930	30,510	31,780	32,620	33,150
Wales	130	90	90	120	110	110	120	140	130	140
EU (excluding UK)	4,130	3,770	4,060	4,190	3,980	4,230	4,080	4,600	4,040	4,050
Not EU	2,170	2,270	2,270	2,290	2,420	2,530	2,720	2,690	2,910	2,950

B.12 Placed applicants at 15 days after A level results day: providers in Scotland

Selected applicant domiciles: difference between cycle and 2017 cycle (at 15 days after A level results day)

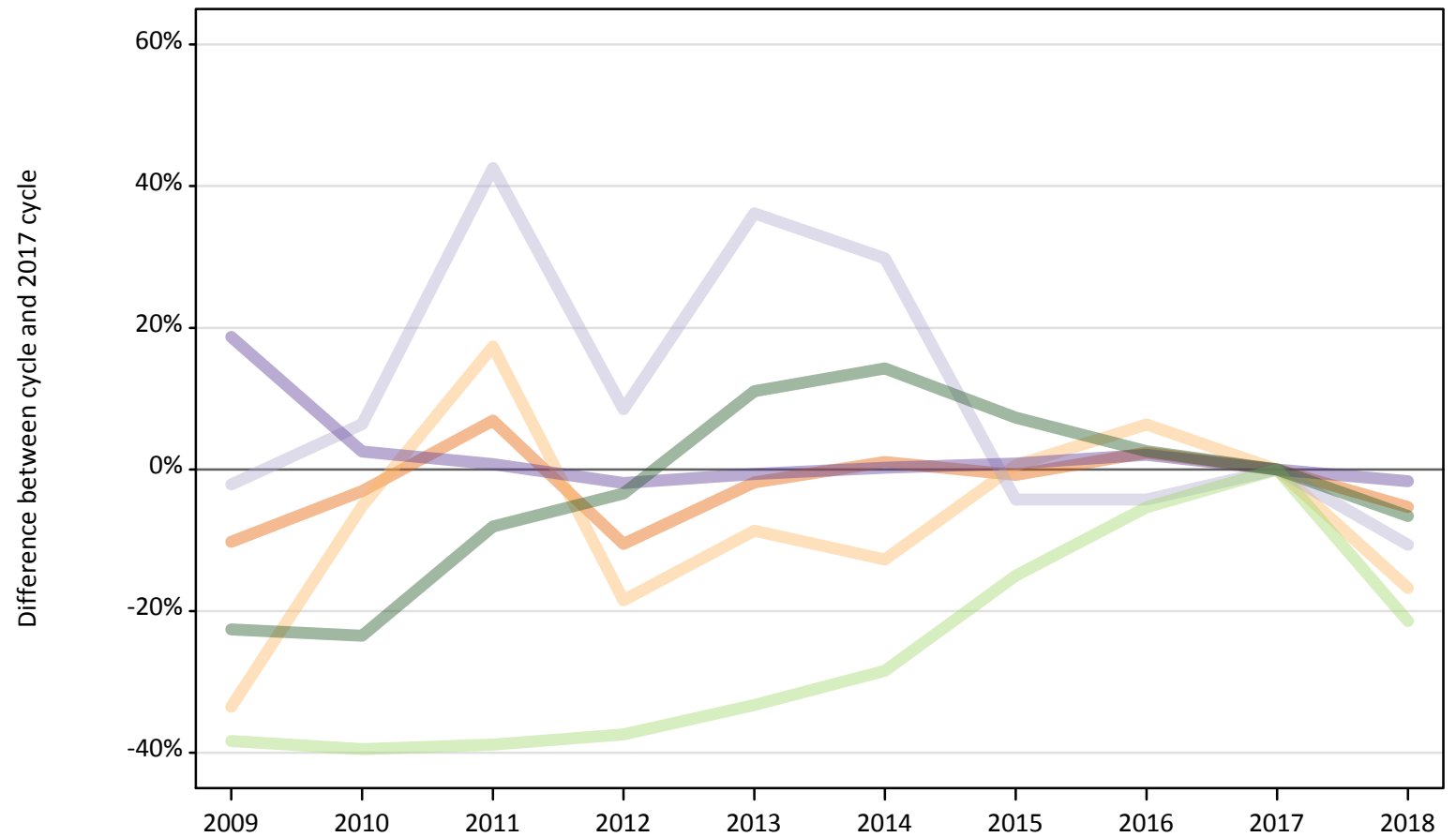
Domicile of applicant	2009	2010	2011	2012	2013	2014	2015	2016	2017	2018
England	-6%	-31%	-36%	-19%	-17%	-5%	-8%	-3%	0%	-8%
Northern Ireland	-2%	-2%	-3%	-17%	-6%	-10%	0%	4%	0%	-12%
Scotland	-22%	-17%	-19%	-18%	-17%	-14%	-6%	-3%	0%	2%
Wales	3%	-28%	-28%	-8%	-16%	-15%	-9%	7%	0%	13%
EU (excluding UK)	2%	-7%	0%	4%	-2%	5%	1%	14%	0%	0%
Not EU	-25%	-22%	-22%	-21%	-17%	-13%	-7%	-8%	0%	1%

Note: The percentage change is not recorded in the above table for groups with fewer than 10 placed applicants in that cycle or in the 2017 cycle.

B.13 Placed applicants at 15 days after A level results day: providers in Wales

Selected applicant domiciles: difference between cycle and 2017 cycle (at 15 days after A level results day)

- England
- Northern Ireland
- Scotland
- Wales
- EU (excluding UK)
- Not EU



Note: The percentage change is not plotted in the above chart for groups with fewer than 30 placed applicants in any one cycle.

B.14 Placed applicants at 15 days after A level results day: providers in Wales

Placed applicants by domicile (at 15 days after A level results day)

Domicile of applicant	2009	2010	2011	2012	2013	2014	2015	2016	2017	2018
England	9,360	10,110	11,150	9,330	10,240	10,540	10,350	10,680	10,430	9,880
Northern Ireland	120	160	200	140	160	150	170	180	170	140
Scotland	50	50	70	50	60	60	50	50	50	40
Wales	12,740	11,000	10,820	10,530	10,670	10,760	10,830	10,950	10,730	10,560
EU (excluding UK)	880	860	870	890	950	1,020	1,210	1,350	1,420	1,120
Not EU	850	840	1,010	1,060	1,220	1,250	1,170	1,120	1,090	1,020

B.15 Placed applicants at 15 days after A level results day: providers in Wales

Selected applicant domiciles: difference between cycle and 2017 cycle (at 15 days after A level results day)

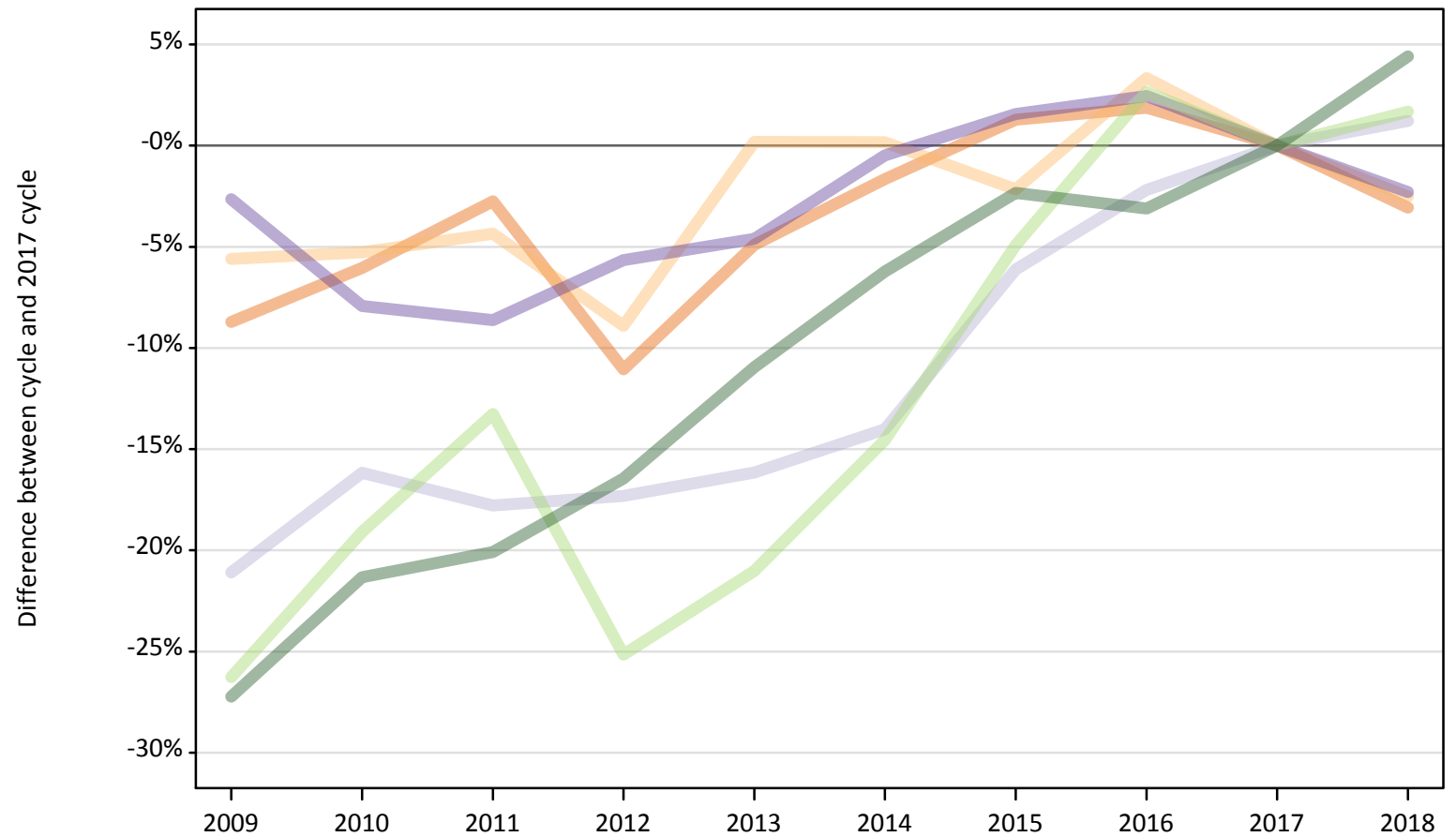
Domicile of applicant	2009	2010	2011	2012	2013	2014	2015	2016	2017	2018
England	-10%	-3%	7%	-11%	-2%	1%	-1%	2%	0%	-5%
Northern Ireland	-34%	-5%	17%	-18%	-9%	-13%	1%	6%	0%	-17%
Scotland	-2%	6%	43%	9%	36%	30%	-4%	-4%	0%	-11%
Wales	19%	3%	1%	-2%	-1%	0%	1%	2%	0%	-2%
EU (excluding UK)	-38%	-39%	-39%	-37%	-33%	-28%	-15%	-5%	0%	-21%
Not EU	-23%	-23%	-8%	-3%	11%	14%	7%	3%	0%	-7%

Note: The percentage change is not recorded in the above table for groups with fewer than 10 placed applicants in that cycle or in the 2017 cycle.

B.16 Placed applicants at 15 days after A level results day: providers in the UK

Selected applicant domiciles: difference between cycle and 2017 cycle (at 15 days after A level results day)

- England
- Northern Ireland
- Scotland
- Wales
- EU (excluding UK)
- Not EU



Note: The percentage change is not plotted in the above chart for groups with fewer than 30 placed applicants in any one cycle.

B.17 Placed applicants at 15 days after A level results day: providers in the UK

Placed applicants by domicile (at 15 days after A level results day)

Domicile of applicant	2009	2010	2011	2012	2013	2014	2015	2016	2017	2018
England	330,210	339,840	351,780	321,710	344,000	355,720	366,320	368,510	361,710	350,620
Northern Ireland	13,450	13,500	13,630	12,980	14,270	14,270	13,940	14,720	14,250	13,890
Scotland	27,050	28,730	28,180	28,340	28,740	29,470	32,180	33,520	34,270	34,690
Wales	18,410	17,410	17,280	17,840	18,040	18,820	19,210	19,370	18,910	18,480
EU (excluding UK)	21,510	23,600	25,300	21,830	23,040	24,930	27,740	29,940	29,170	29,660
Not EU	25,880	27,970	28,420	29,710	31,660	33,340	34,730	34,450	35,560	37,120

B.18 Placed applicants at 15 days after A level results day: providers in the UK

Selected applicant domiciles: difference between cycle and 2017 cycle (at 15 days after A level results day)

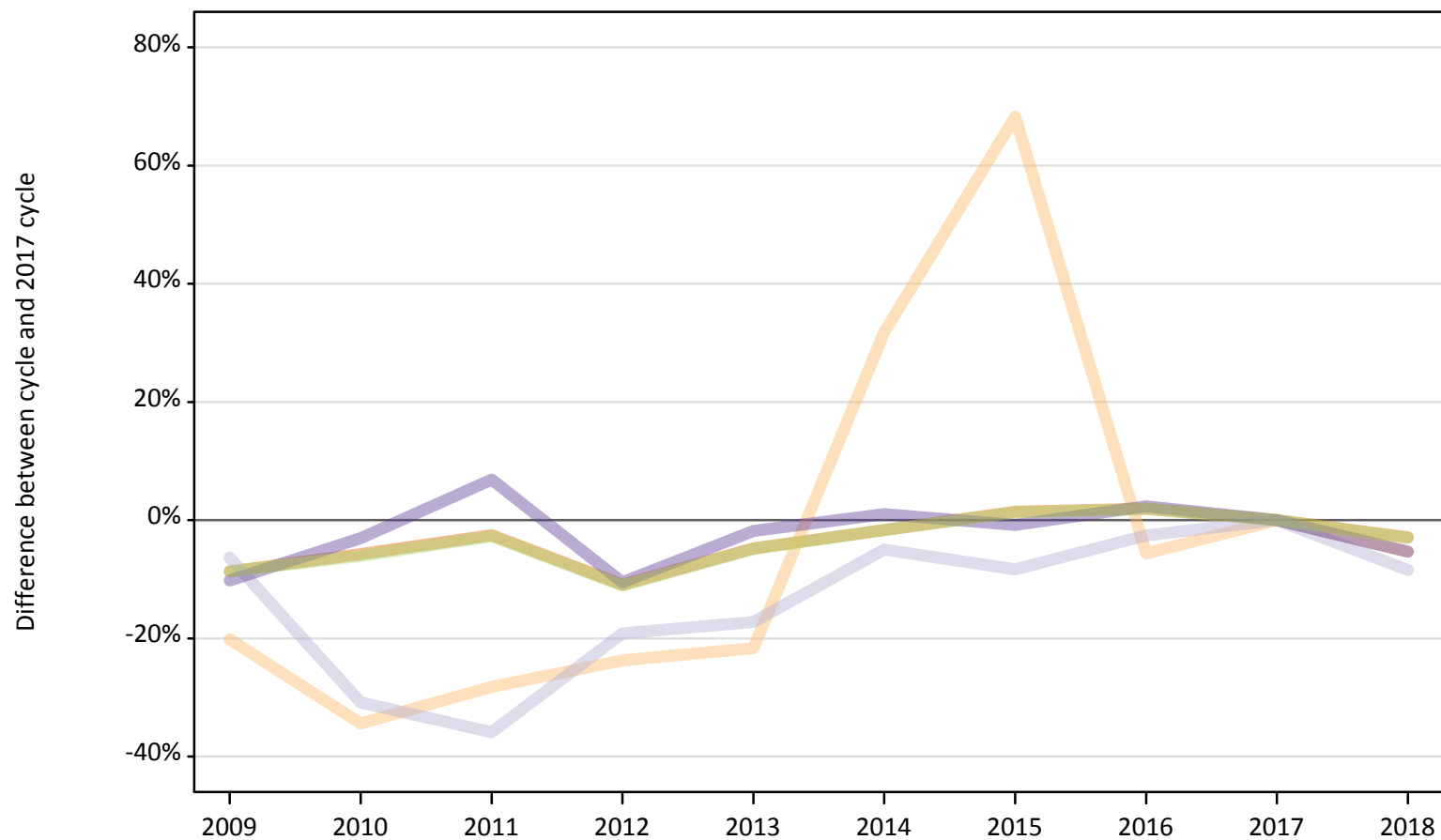
Domicile of applicant	2009	2010	2011	2012	2013	2014	2015	2016	2017	2018
England	-9%	-6%	-3%	-11%	-5%	-2%	1%	2%	0%	-3%
Northern Ireland	-6%	-5%	-4%	-9%	0%	0%	-2%	3%	0%	-3%
Scotland	-21%	-16%	-18%	-17%	-16%	-14%	-6%	-2%	0%	1%
Wales	-3%	-8%	-9%	-6%	-5%	-0%	2%	2%	0%	-2%
EU (excluding UK)	-26%	-19%	-13%	-25%	-21%	-15%	-5%	3%	0%	2%
Not EU	-27%	-21%	-20%	-16%	-11%	-6%	-2%	-3%	0%	4%

Note: The percentage change is not recorded in the above table for groups with fewer than 10 placed applicants in that cycle or in the 2017 cycle.

B.19 Placed applicants at 15 days after A level results day: domiciled in England

Selected provider countries: difference between cycle and 2017 cycle (at 15 days after A level results day)

- England
- Northern Ireland
- Scotland
- Wales
- UK



Note: The percentage change is not plotted in the above chart for groups with fewer than 30 placed applicants in any one cycle.

B.20 Placed applicants at 15 days after A level results day: domiciled in England

Placed applicants by provider country (at 15 days after A level results day)

Country of provider	2009	2010	2011	2012	2013	2014	2015	2016	2017	2018
England	315,880	326,050	337,180	308,070	329,350	339,980	350,810	352,630	345,930	335,840
Northern Ireland	270	220	240	260	260	440	570	320	340	320
Scotland	4,690	3,470	3,210	4,050	4,150	4,760	4,600	4,880	5,010	4,590
Wales	9,360	10,110	11,150	9,330	10,240	10,540	10,350	10,680	10,430	9,880
UK	330,210	339,840	351,780	321,710	344,000	355,720	366,320	368,510	361,710	350,620

B.21 Placed applicants at 15 days after A level results day: domiciled in England

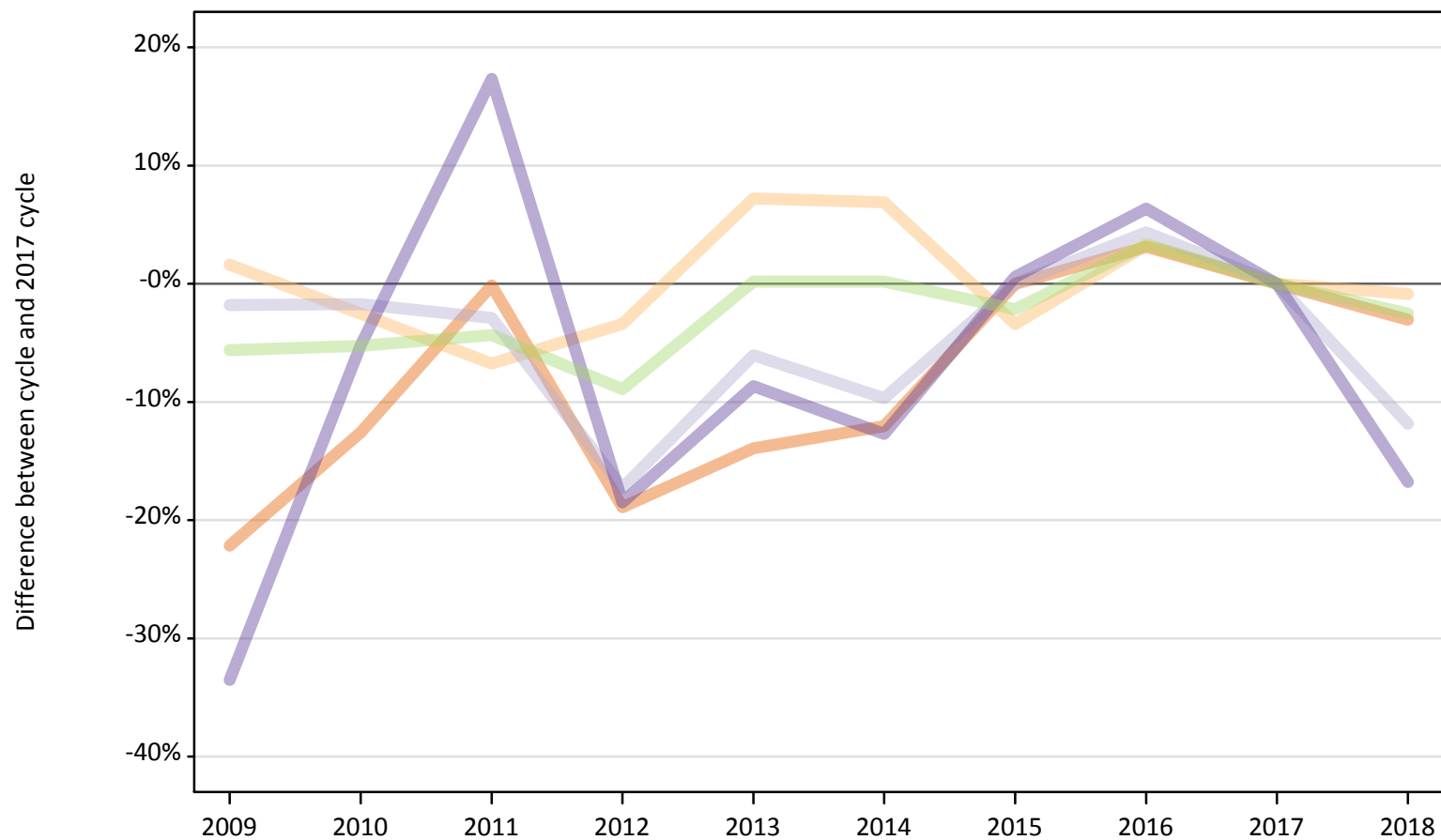
Selected provider countries: difference between cycle and 2017 cycle (at 15 days after A level results day)

Country of provider	2009	2010	2011	2012	2013	2014	2015	2016	2017	2018
England	-9%	-6%	-3%	-11%	-5%	-2%	1%	2%	0%	-3%
Northern Ireland	-20%	-34%	-28%	-24%	-22%	32%	68%	-6%	0%	-5%
Scotland	-6%	-31%	-36%	-19%	-17%	-5%	-8%	-3%	0%	-8%
Wales	-10%	-3%	7%	-11%	-2%	1%	-1%	2%	0%	-5%
UK	-9%	-6%	-3%	-11%	-5%	-2%	1%	2%	0%	-3%

Note: The percentage change is not recorded in the above table for groups with fewer than 10 placed applicants in that cycle or in the 2017 cycle.

B.22 Placed applicants at 15 days after A level results day: domiciled in Northern Ireland
Selected provider countries: difference between cycle and 2017 cycle (at 15 days after A level results day)

- England
- Northern Ireland
- Scotland
- Wales
- UK



Note: The percentage change is not plotted in the above chart for groups with fewer than 30 placed applicants in any one cycle.

B.23 Placed applicants at 15 days after A level results day: domiciled in Northern Ireland

Placed applicants by provider country (at 15 days after A level results day)

Country of provider	2009	2010	2011	2012	2013	2014	2015	2016	2017	2018
England	3,040	3,420	3,900	3,170	3,370	3,440	3,910	4,030	3,910	3,790
Northern Ireland	9,200	8,830	8,440	8,750	9,710	9,680	8,750	9,350	9,060	8,980
Scotland	1,090	1,090	1,070	920	1,040	1,000	1,110	1,150	1,110	980
Wales	120	160	200	140	160	150	170	180	170	140
UK	13,450	13,500	13,630	12,980	14,270	14,270	13,940	14,720	14,250	13,890

B.24 Placed applicants at 15 days after A level results day: domiciled in Northern Ireland

Selected provider countries: difference between cycle and 2017 cycle (at 15 days after A level results day)

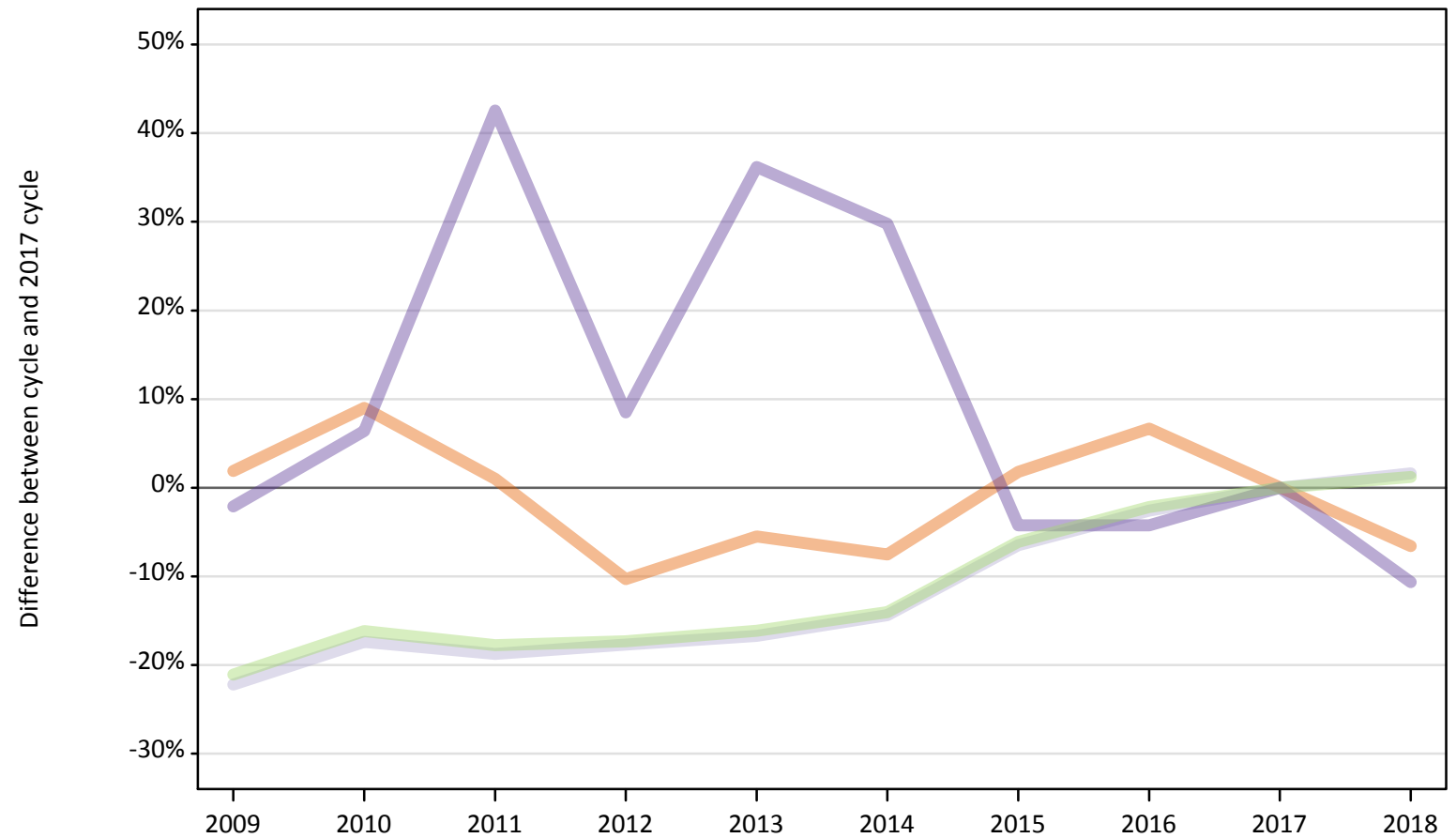
Country of provider	2009	2010	2011	2012	2013	2014	2015	2016	2017	2018
England	-22%	-13%	-0%	-19%	-14%	-12%	-0%	3%	0%	-3%
Northern Ireland	2%	-3%	-7%	-3%	7%	7%	-3%	3%	0%	-1%
Scotland	-2%	-2%	-3%	-17%	-6%	-10%	0%	4%	0%	-12%
Wales	-34%	-5%	17%	-18%	-9%	-13%	1%	6%	0%	-17%
UK	-6%	-5%	-4%	-9%	0%	0%	-2%	3%	0%	-3%

Note: The percentage change is not recorded in the above table for groups with fewer than 10 placed applicants in that cycle or in the 2017 cycle.

B.25 Placed applicants at 15 days after A level results day: domiciled in Scotland

Selected provider countries: difference between cycle and 2017 cycle (at 15 days after A level results day)

- England
- Northern Ireland
- Scotland
- Wales
- UK



Note: The percentage change is not plotted in the above chart for groups with fewer than 30 placed applicants in any one cycle.

B.26 Placed applicants at 15 days after A level results day: domiciled in Scotland

Placed applicants by provider country (at 15 days after A level results day)

Country of provider	2009	2010	2011	2012	2013	2014	2015	2016	2017	2018
England	1,610	1,720	1,600	1,420	1,490	1,460	1,610	1,680	1,580	1,480
Northern Ireland	20	20	20	30	20	20	20	20	30	30
Scotland	25,370	26,940	26,500	26,850	27,170	27,930	30,510	31,780	32,620	33,150
Wales	50	50	70	50	60	60	50	50	50	40
UK	27,050	28,730	28,180	28,340	28,740	29,470	32,180	33,520	34,270	34,690

B.27 Placed applicants at 15 days after A level results day: domiciled in Scotland

Selected provider countries: difference between cycle and 2017 cycle (at 15 days after A level results day)

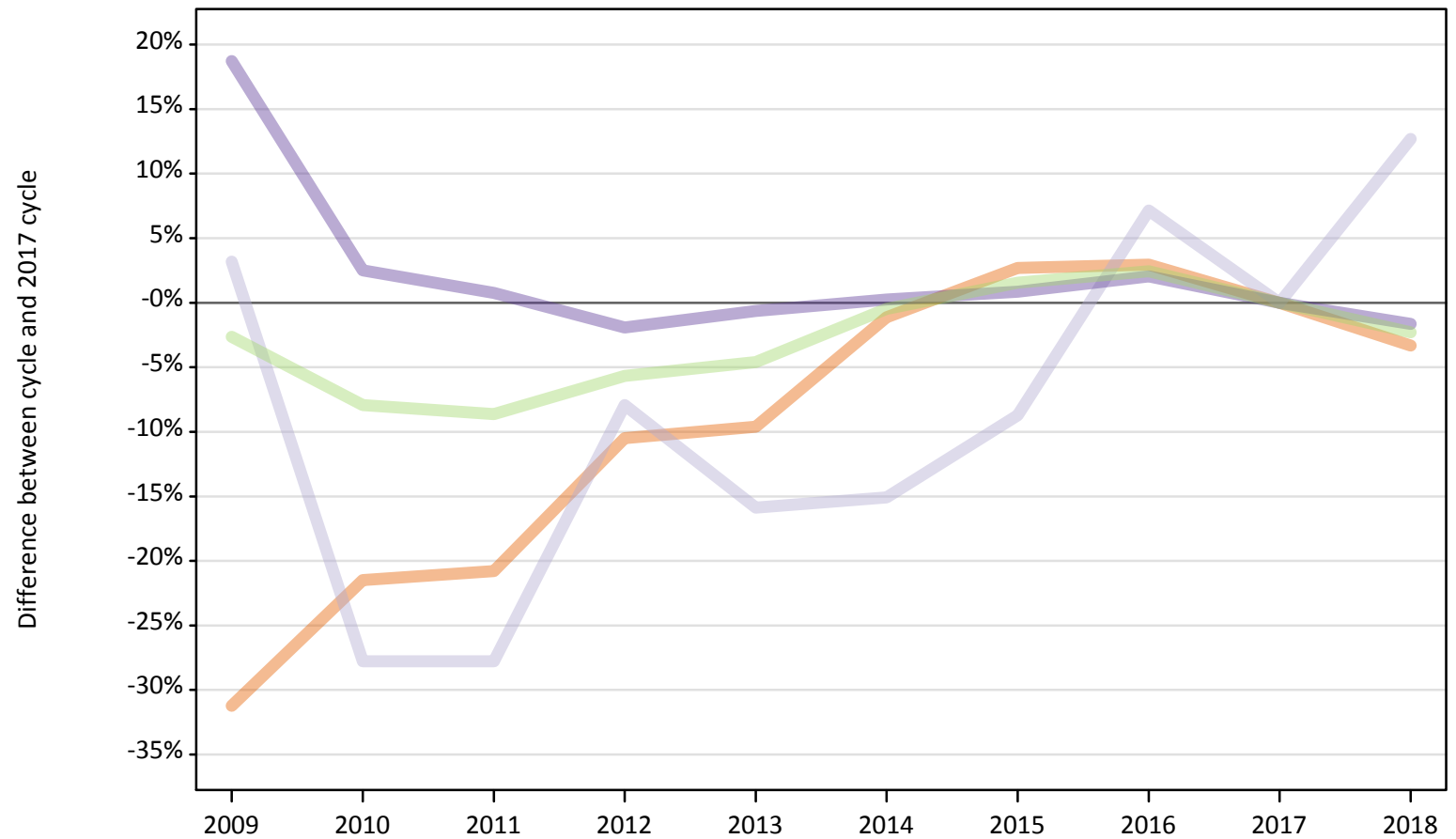
Country of provider	2009	2010	2011	2012	2013	2014	2015	2016	2017	2018
England	2%	9%	1%	-10%	-6%	-8%	2%	7%	0%	-7%
Northern Ireland	-47%	-28%	-41%	-19%	-53%	-47%	-38%	-41%	0%	-16%
Scotland	-22%	-17%	-19%	-18%	-17%	-14%	-6%	-3%	0%	2%
Wales	-2%	6%	43%	9%	36%	30%	-4%	-4%	0%	-11%
UK	-21%	-16%	-18%	-17%	-16%	-14%	-6%	-2%	0%	1%

Note: The percentage change is not recorded in the above table for groups with fewer than 10 placed applicants in that cycle or in the 2017 cycle.

B.28 Placed applicants at 15 days after A level results day: domiciled in Wales

Selected provider countries: difference between cycle and 2017 cycle (at 15 days after A level results day)

- England
- Northern Ireland
- Scotland
- Wales
- UK



Note: The percentage change is not plotted in the above chart for groups with fewer than 30 placed applicants in any one cycle.

B.29 Placed applicants at 15 days after A level results day: domiciled in Wales

Placed applicants by provider country (at 15 days after A level results day)

Country of provider	2009	2010	2011	2012	2013	2014	2015	2016	2017	2018
England	5,530	6,310	6,370	7,190	7,260	7,950	8,250	8,270	8,040	7,770
Northern Ireland	10	10	10	0	10	10	10	10	20	10
Scotland	130	90	90	120	110	110	120	140	130	140
Wales	12,740	11,000	10,820	10,530	10,670	10,760	10,830	10,950	10,730	10,560
UK	18,410	17,410	17,280	17,840	18,040	18,820	19,210	19,370	18,910	18,480

B.30 Placed applicants at 15 days after A level results day: domiciled in Wales

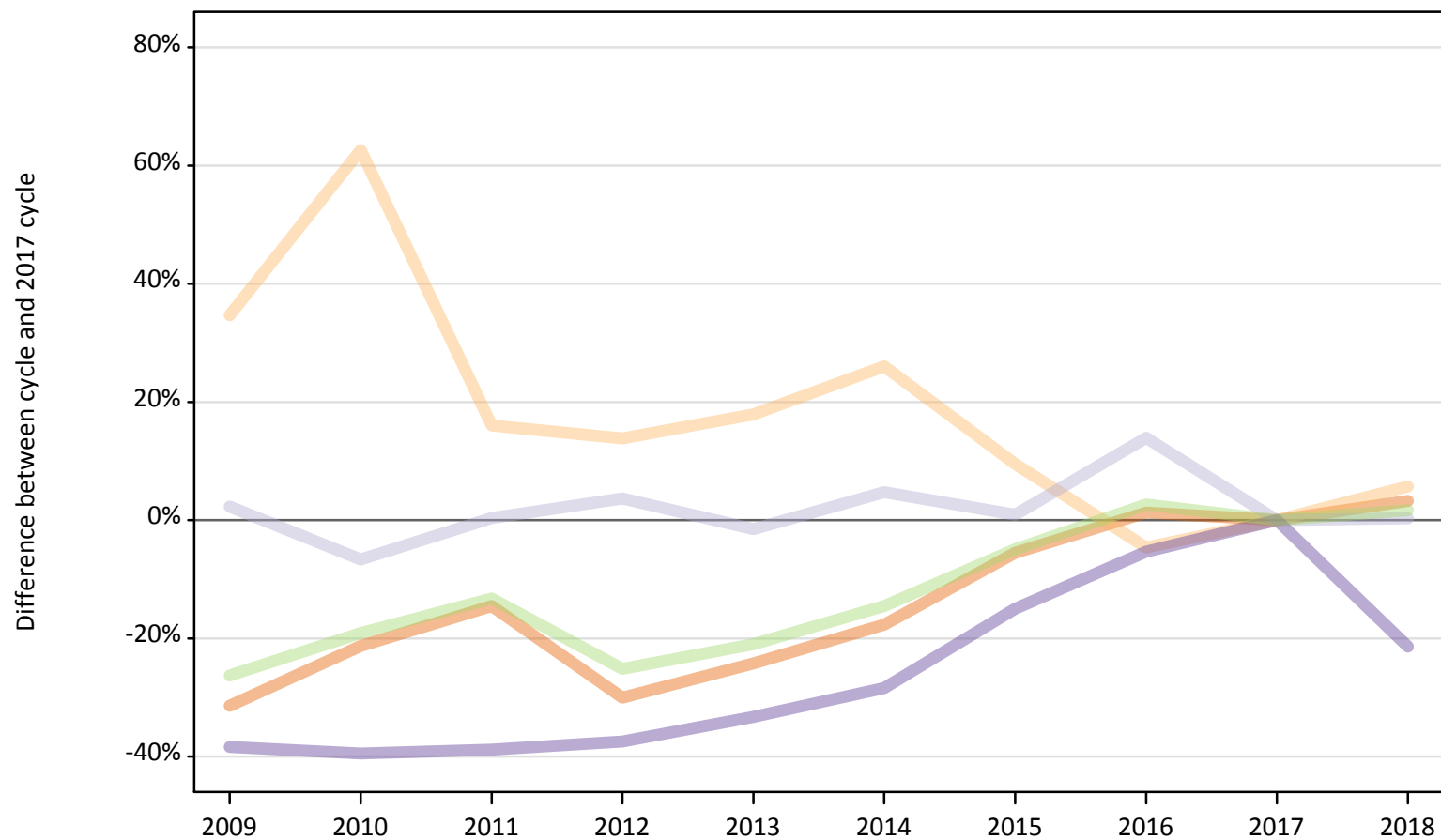
Selected provider countries: difference between cycle and 2017 cycle (at 15 days after A level results day)

Country of provider	2009	2010	2011	2012	2013	2014	2015	2016	2017	2018
England	-31%	-21%	-21%	-10%	-10%	-1%	3%	3%	0%	-3%
Northern Ireland	-20%	-53%	-47%		-67%	-47%	-13%	-27%	0%	-33%
Scotland	3%	-28%	-28%	-8%	-16%	-15%	-9%	7%	0%	13%
Wales	19%	3%	1%	-2%	-1%	0%	1%	2%	0%	-2%
UK	-3%	-8%	-9%	-6%	-5%	-0%	2%	2%	0%	-2%

Note: The percentage change is not recorded in the above table for groups with fewer than 10 placed applicants in that cycle or in the 2017 cycle.

B.31 Placed applicants at 15 days after A level results day: domiciled in EU (excluding UK)
Selected provider countries: difference between cycle and 2017 cycle (at 15 days after A level results day)

- England
- Northern Ireland
- Scotland
- Wales
- UK



Note: The percentage change is not plotted in the above chart for groups with fewer than 30 placed applicants in any one cycle.

B.32 Placed applicants at 15 days after A level results day: domiciled in EU (excluding UK)

Placed applicants by provider country (at 15 days after A level results day)

Country of provider	2009	2010	2011	2012	2013	2014	2015	2016	2017	2018
England	16,000	18,370	19,950	16,330	17,680	19,210	22,050	23,640	23,340	24,100
Northern Ireland	500	600	430	420	440	470	400	350	370	390
Scotland	4,130	3,770	4,060	4,190	3,980	4,230	4,080	4,600	4,040	4,050
Wales	880	860	870	890	950	1,020	1,210	1,350	1,420	1,120
UK	21,510	23,600	25,300	21,830	23,040	24,930	27,740	29,940	29,170	29,660

B.33 Placed applicants at 15 days after A level results day: domiciled in EU (excluding UK)

Selected provider countries: difference between cycle and 2017 cycle (at 15 days after A level results day)

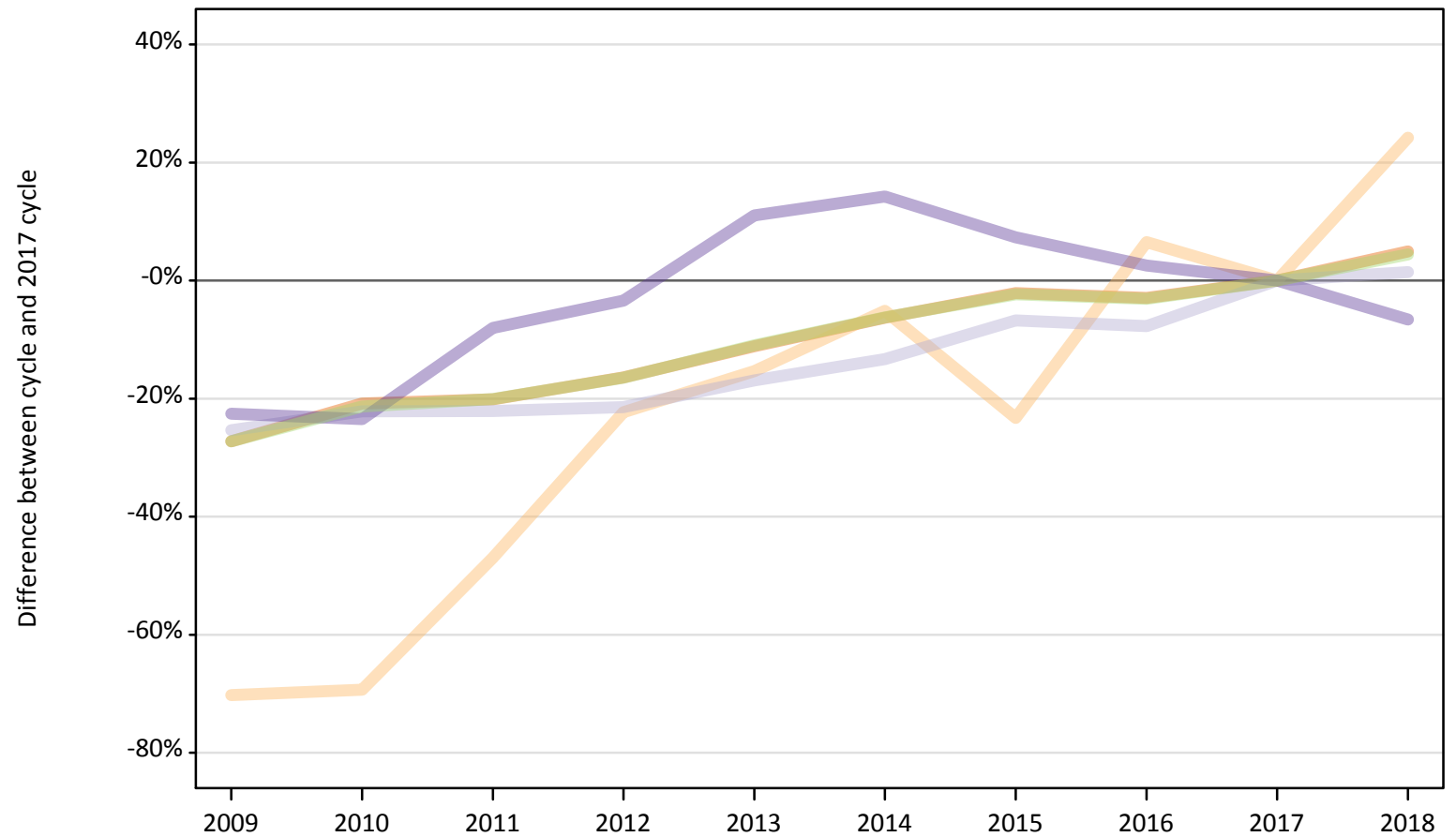
Country of provider	2009	2010	2011	2012	2013	2014	2015	2016	2017	2018
England	-31%	-21%	-15%	-30%	-24%	-18%	-6%	1%	0%	3%
Northern Ireland	35%	63%	16%	14%	18%	26%	9%	-5%	0%	6%
Scotland	2%	-7%	0%	4%	-2%	5%	1%	14%	0%	0%
Wales	-38%	-39%	-39%	-37%	-33%	-28%	-15%	-5%	0%	-21%
UK	-26%	-19%	-13%	-25%	-21%	-15%	-5%	3%	0%	2%

Note: The percentage change is not recorded in the above table for groups with fewer than 10 placed applicants in that cycle or in the 2017 cycle.

B.34 Placed applicants at 15 days after A level results day: domiciled in Not EU

Selected provider countries: difference between cycle and 2017 cycle (at 15 days after A level results day)

- England
- Northern Ireland
- Scotland
- Wales
- UK



Note: The percentage change is not plotted in the above chart for groups with fewer than 30 placed applicants in any one cycle.

B.35 Placed applicants at 15 days after A level results day: domiciled in Not EU

Placed applicants by provider country (at 15 days after A level results day)

Country of provider	2009	2010	2011	2012	2013	2014	2015	2016	2017	2018
England	22,790	24,800	25,030	26,190	27,850	29,360	30,670	30,410	31,330	32,880
Northern Ireland	60	70	110	170	180	200	170	230	220	270
Scotland	2,170	2,270	2,270	2,290	2,420	2,530	2,720	2,690	2,910	2,950
Wales	850	840	1,010	1,060	1,220	1,250	1,170	1,120	1,090	1,020
UK	25,880	27,970	28,420	29,710	31,660	33,340	34,730	34,450	35,560	37,120

B.36 Placed applicants at 15 days after A level results day: domiciled in Not EU

Selected provider countries: difference between cycle and 2017 cycle (at 15 days after A level results day)

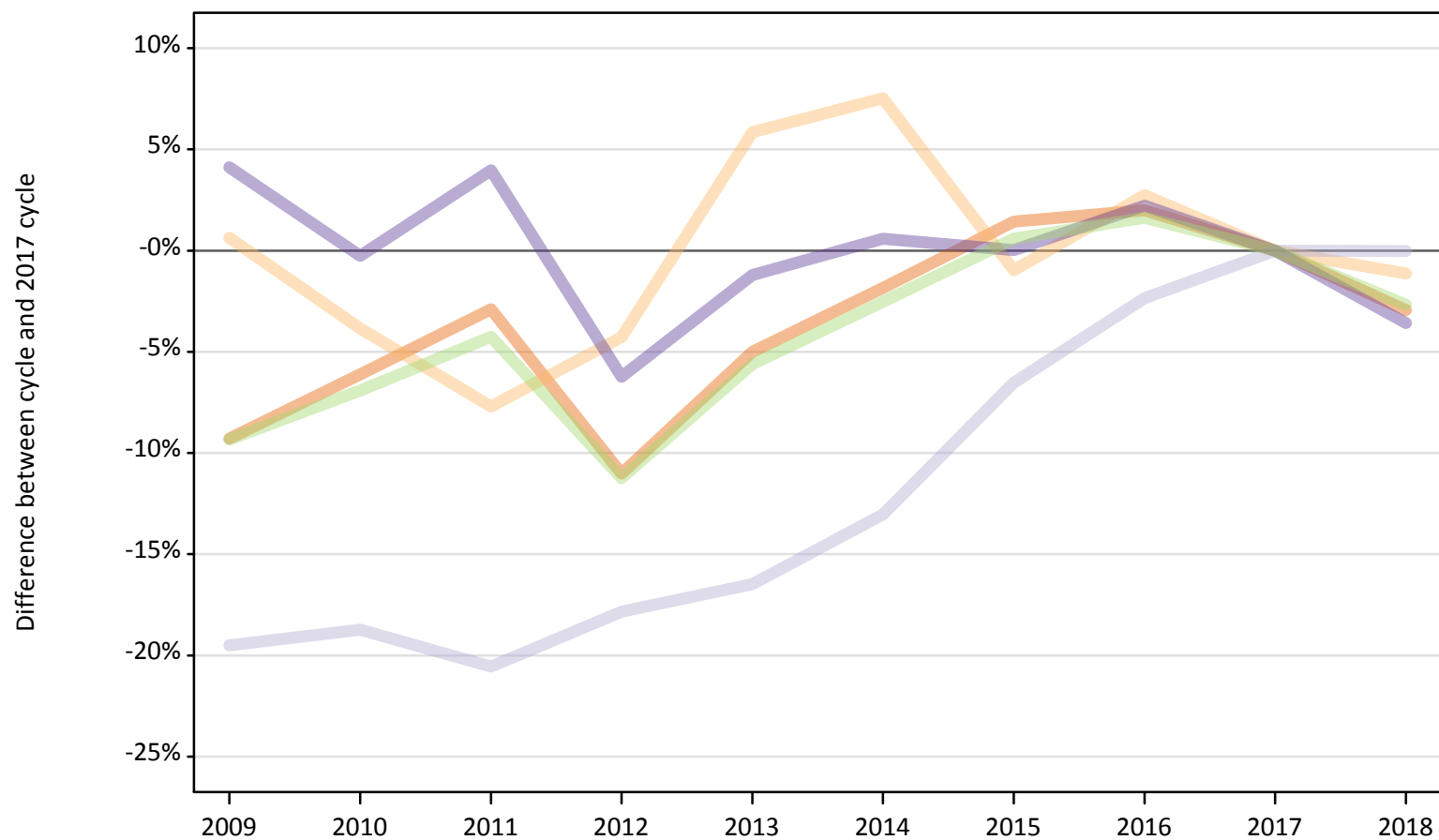
Country of provider	2009	2010	2011	2012	2013	2014	2015	2016	2017	2018
England	-27%	-21%	-20%	-16%	-11%	-6%	-2%	-3%	0%	5%
Northern Ireland	-70%	-69%	-47%	-22%	-15%	-5%	-23%	7%	0%	24%
Scotland	-25%	-22%	-22%	-21%	-17%	-13%	-7%	-8%	0%	1%
Wales	-23%	-23%	-8%	-3%	11%	14%	7%	3%	0%	-7%
UK	-27%	-21%	-20%	-16%	-11%	-6%	-2%	-3%	0%	4%

Note: The percentage change is not recorded in the above table for groups with fewer than 10 placed applicants in that cycle or in the 2017 cycle.

B.37 Placed applicants at 15 days after A level results day: domiciled in UK

Selected provider countries: difference between cycle and 2017 cycle (at 15 days after A level results day)

- England
- Northern Ireland
- Scotland
- Wales
- UK



Note: The percentage change is not plotted in the above chart for groups with fewer than 30 placed applicants in any one cycle.

B.38 Placed applicants at 15 days after A level results day: domiciled in UK

Placed applicants by provider country (at 15 days after A level results day)

Country of provider	2009	2010	2011	2012	2013	2014	2015	2016	2017	2018
England	326,060	337,490	349,040	319,850	341,470	352,820	364,580	366,620	359,450	348,870
Northern Ireland	9,500	9,080	8,710	9,040	9,990	10,150	9,350	9,700	9,440	9,330
Scotland	31,280	31,580	30,880	31,930	32,460	33,800	36,320	37,950	38,860	38,850
Wales	22,270	21,330	22,230	20,050	21,130	21,510	21,390	21,860	21,380	20,620
UK	389,110	399,480	410,860	380,870	405,050	418,280	431,640	436,130	429,140	417,680

B.39 Placed applicants at 15 days after A level results day: domiciled in UK

Selected provider countries: difference between cycle and 2017 cycle (at 15 days after A level results day)

Country of provider	2009	2010	2011	2012	2013	2014	2015	2016	2017	2018
England	-9%	-6%	-3%	-11%	-5%	-2%	1%	2%	0%	-3%
Northern Ireland	1%	-4%	-8%	-4%	6%	8%	-1%	3%	0%	-1%
Scotland	-19%	-19%	-21%	-18%	-16%	-13%	-7%	-2%	0%	-0%
Wales	4%	-0%	4%	-6%	-1%	1%	0%	2%	0%	-4%
UK	-9%	-7%	-4%	-11%	-6%	-3%	1%	2%	0%	-3%

Note: The percentage change is not recorded in the above table for groups with fewer than 10 placed applicants in that cycle or in the 2017 cycle.