

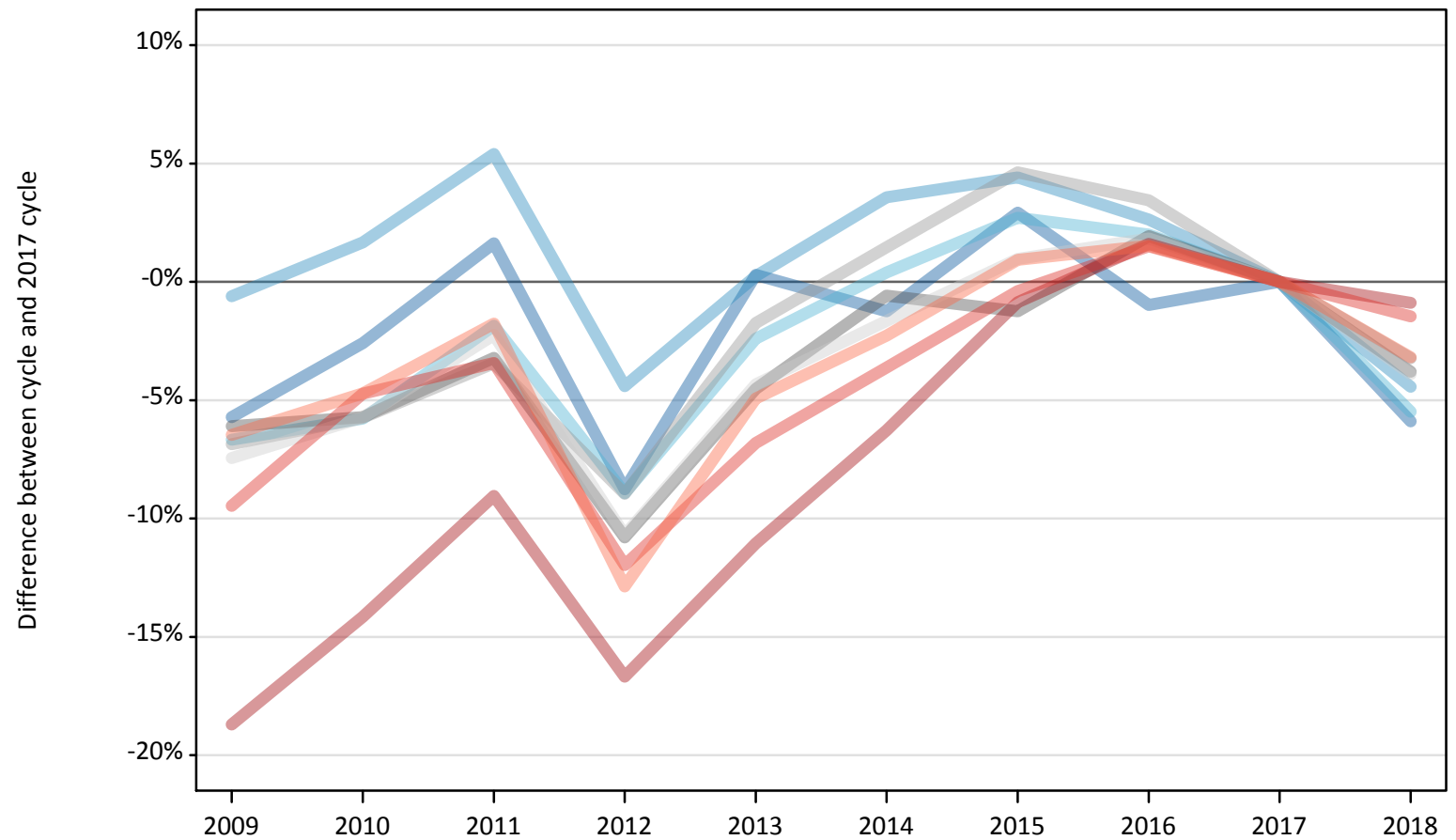
Daily Clearing Analysis: Region

Analysis at 00:05 on Friday 31 August 2018 (15 days after A level results day)

R.1 Placed applicants by region of domicile: 15 days after A level results day

Placed applicants: change relative to 2017 cycle totals

- North East
- North West
- Yorkshire and The Humber
- East Midlands
- West Midlands
- East of England
- London
- South East
- South West



Note: The percentage change is not plotted in the above chart for groups with fewer than 30 placed applicants in any one cycle.

R.2 Placed applicants by region of domicile: 15 days after A level results day

Applicant Status	Domicile	2009	2010	2011	2012	2013	2014	2015	2016	2017	2018
Placed	North East	14,620	15,110	15,760	14,150	15,560	15,320	15,960	15,360	15,510	14,590
	North West	46,340	47,390	49,140	44,560	46,730	48,290	48,680	47,850	46,620	44,550
	Yorkshire and The Humber	30,680	30,980	32,270	29,940	32,090	33,010	33,770	33,540	32,880	31,070
	East Midlands	26,350	26,450	27,150	25,020	26,790	27,890	27,710	28,600	28,050	26,990
	West Midlands	34,910	35,330	36,200	34,130	36,830	38,030	39,220	38,780	37,480	36,270
	East of England	34,640	35,280	36,590	33,420	35,810	36,810	37,790	38,120	37,430	35,970
	London	57,800	61,040	64,660	59,230	63,240	66,640	70,480	72,240	71,100	70,470
	South East	53,620	56,440	57,200	52,150	55,200	57,090	59,000	60,120	59,230	58,370
	South West	31,250	31,830	32,810	29,110	31,760	32,650	33,720	33,920	33,410	32,340
	(England total)	330,210	339,840	351,780	321,710	344,000	355,720	366,320	368,510	361,710	350,620
	Scotland	27,050	28,730	28,180	28,340	28,740	29,470	32,180	33,520	34,270	34,690
	Northern Ireland	13,450	13,500	13,630	12,980	14,270	14,270	13,940	14,720	14,250	13,890
	Wales	18,410	17,410	17,280	17,840	18,040	18,820	19,210	19,370	18,910	18,480
	UK	389,110	399,480	410,860	380,870	405,050	418,280	431,640	436,130	429,140	417,680

R.3 Placed applicants by region of domicile: 15 days after A level results day

Placed applicants: change relative to 2017 cycle totals

Applicant Status	Domicile	2009	2010	2011	2012	2013	2014	2015	2016	2017	2018
Placed	North East	-6%	-3%	2%	-9%	0%	-1%	3%	-1%	0%	-6%
	North West	-1%	2%	5%	-4%	0%	4%	4%	3%	0%	-4%
	Yorkshire and The Humber	-7%	-6%	-2%	-9%	-2%	0%	3%	2%	0%	-5%
	East Midlands	-6%	-6%	-3%	-11%	-5%	-1%	-1%	2%	0%	-4%
	West Midlands	-7%	-6%	-3%	-9%	-2%	1%	5%	3%	0%	-3%
	East of England	-7%	-6%	-2%	-11%	-4%	-2%	1%	2%	0%	-4%
	London	-19%	-14%	-9%	-17%	-11%	-6%	-1%	2%	0%	-1%
	South East	-9%	-5%	-3%	-12%	-7%	-4%	-0%	2%	0%	-1%
	South West	-6%	-5%	-2%	-13%	-5%	-2%	1%	2%	0%	-3%
	(England total)	-9%	-6%	-3%	-11%	-5%	-2%	1%	2%	0%	-3%
	Scotland	-21%	-16%	-18%	-17%	-16%	-14%	-6%	-2%	0%	1%
	Northern Ireland	-6%	-5%	-4%	-9%	0%	0%	-2%	3%	0%	-3%
	Wales	-3%	-8%	-9%	-6%	-5%	-0%	2%	2%	0%	-2%
	UK	-9%	-7%	-4%	-11%	-6%	-3%	1%	2%	0%	-3%

Note: The percentage change is not recorded in the above table for groups with fewer than 10 placed applicants in that cycle or in the 2017 cycle.

R.4 Placed applicants by region of domicile: 15 days after A level results day

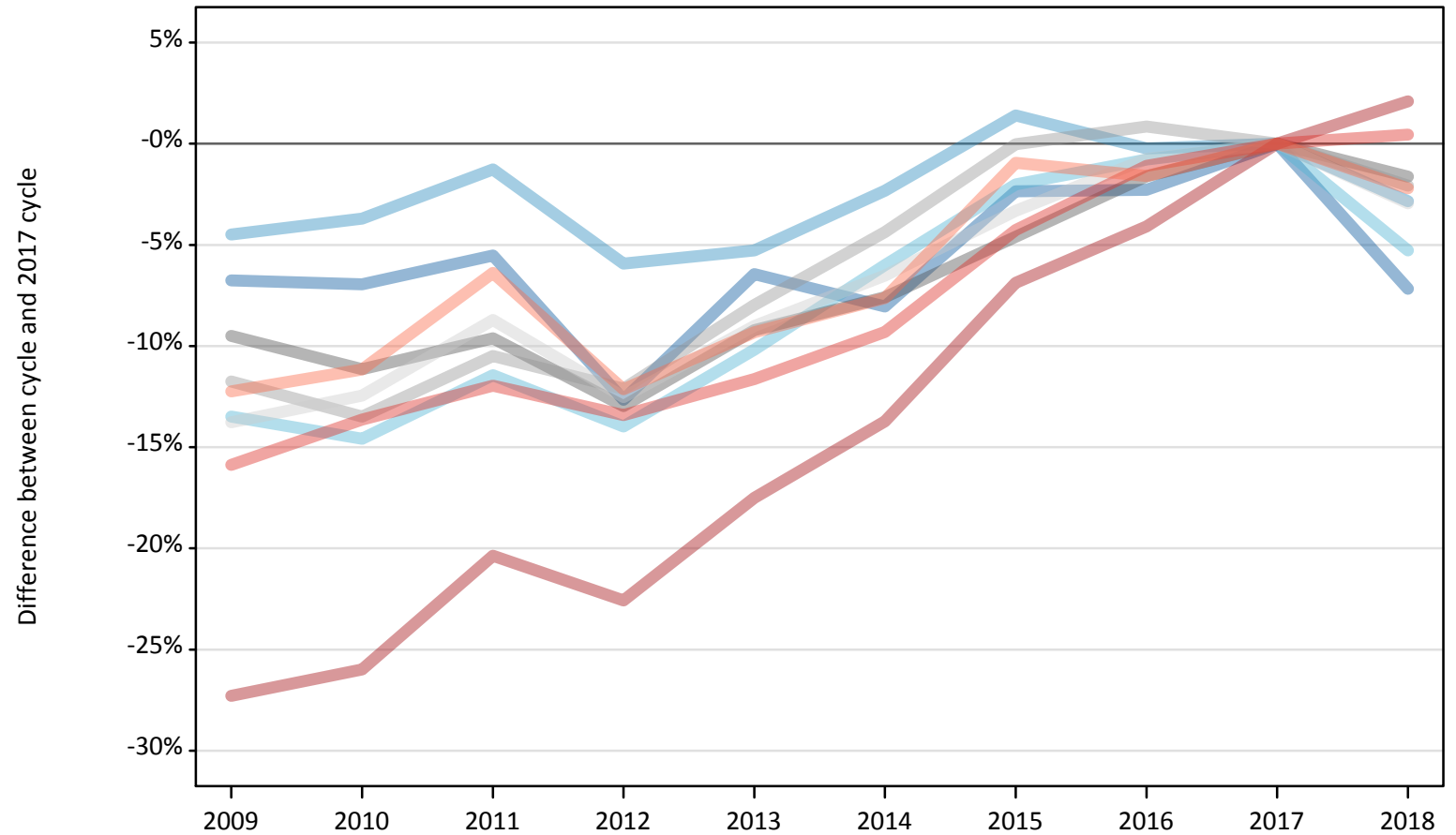
Placed applicants: absolute change relative to 2017 cycle totals

Applicant Status	Domicile	2009	2010	2011	2012	2013	2014	2015	2016	2017	2018
Placed	North East	-890	-400	250	-1,360	50	-190	450	-150	0	-920
	North West	-280	770	2,520	-2,060	120	1,670	2,060	1,230	0	-2,060
	Yorkshire and The Humber	-2,200	-1,900	-610	-2,940	-790	130	890	660	0	-1,810
	East Midlands	-1,710	-1,600	-900	-3,030	-1,270	-170	-350	540	0	-1,070
	West Midlands	-2,570	-2,150	-1,290	-3,360	-650	550	1,730	1,290	0	-1,210
	East of England	-2,790	-2,150	-840	-4,010	-1,620	-620	360	690	0	-1,460
	London	-13,300	-10,060	-6,440	-11,860	-7,860	-4,460	-620	1,140	0	-630
	South East	-5,610	-2,800	-2,030	-7,090	-4,040	-2,140	-230	890	0	-870
	South West	-2,160	-1,580	-590	-4,300	-1,650	-760	310	510	0	-1,070
	(England total)	-31,500	-21,860	-9,930	-39,990	-17,710	-5,990	4,620	6,800	0	-11,090
	Scotland	-7,230	-5,540	-6,090	-5,930	-5,540	-4,810	-2,100	-750	0	420
	Northern Ireland	-800	-750	-620	-1,270	30	30	-310	480	0	-360
	Wales	-500	-1,500	-1,630	-1,070	-870	-90	300	460	0	-430
	UK	-40,020	-29,650	-18,270	-48,270	-24,090	-10,860	2,510	6,990	0	-11,460

R.5 Placed 18 year old applicants by region of domicile: 15 days after A level results day

Placed 18 year old applicants: change relative to 2017 cycle totals

- North East
- North West
- Yorkshire and The Humber
- East Midlands
- West Midlands
- East of England
- London
- South East
- South West



Note: The percentage change is not plotted in the above chart for groups with fewer than 30 placed applicants in any one cycle.

R.6 Placed 18 year old applicants by region of domicile: 15 days after A level results day

Applicant Status	Domicile	2009	2010	2011	2012	2013	2014	2015	2016	2017	2018
Placed	North East	8,090	8,080	8,200	7,580	8,120	7,980	8,470	8,480	8,680	8,060
	North West	25,690	25,900	26,550	25,300	25,480	26,270	27,270	26,840	26,900	26,130
	Yorkshire and The Humber	16,670	16,460	17,070	16,580	17,310	18,120	18,890	19,120	19,270	18,260
	East Midlands	14,790	14,520	14,770	14,220	14,840	15,100	15,590	16,080	16,340	16,080
	West Midlands	18,760	18,390	19,020	18,680	19,560	20,320	21,250	21,430	21,250	20,810
	East of England	19,840	20,150	21,010	20,130	20,940	21,510	22,250	22,840	23,010	22,330
	London	27,700	28,200	30,340	29,490	31,430	32,870	35,470	36,540	38,090	38,890
	South East	29,820	30,610	31,210	30,690	31,330	32,150	33,940	35,060	35,450	35,610
	South West	15,460	15,650	16,500	15,480	15,980	16,280	17,460	17,340	17,620	17,230
	(England total)	176,830	177,960	184,660	178,170	184,970	190,600	200,590	203,730	206,610	203,400
	Scotland	14,510	14,780	14,020	14,130	14,170	14,330	14,420	14,640	14,660	14,610
	Northern Ireland	9,360	8,850	8,600	8,350	8,780	8,560	8,450	8,590	8,480	8,190
	Wales	10,370	9,800	9,430	9,730	9,680	10,070	10,510	10,620	10,290	10,130
	UK	211,070	211,380	216,710	210,380	217,590	223,560	233,960	237,570	240,030	236,330

R.7 Placed 18 year old applicants by region of domicile: 15 days after A level results day

Placed 18 year old applicants: change relative to 2017 cycle totals

Applicant Status	Domicile	2009	2010	2011	2012	2013	2014	2015	2016	2017	2018
Placed	North East	-7%	-7%	-6%	-13%	-6%	-8%	-2%	-2%	0%	-7%
	North West	-4%	-4%	-1%	-6%	-5%	-2%	1%	-0%	0%	-3%
	Yorkshire and The Humber	-13%	-15%	-11%	-14%	-10%	-6%	-2%	-1%	0%	-5%
	East Midlands	-10%	-11%	-10%	-13%	-9%	-8%	-5%	-2%	0%	-2%
	West Midlands	-12%	-13%	-10%	-12%	-8%	-4%	-0%	1%	0%	-2%
	East of England	-14%	-12%	-9%	-13%	-9%	-7%	-3%	-1%	0%	-3%
	London	-27%	-26%	-20%	-23%	-17%	-14%	-7%	-4%	0%	2%
	South East	-16%	-14%	-12%	-13%	-12%	-9%	-4%	-1%	0%	0%
	South West	-12%	-11%	-6%	-12%	-9%	-8%	-1%	-2%	0%	-2%
	(England total)	-14%	-14%	-11%	-14%	-10%	-8%	-3%	-1%	0%	-2%
	Scotland	-1%	1%	-4%	-4%	-3%	-2%	-2%	-0%	0%	-0%
	Northern Ireland	10%	4%	1%	-2%	4%	1%	-0%	1%	0%	-3%
	Wales	1%	-5%	-8%	-5%	-6%	-2%	2%	3%	0%	-2%
	UK	-12%	-12%	-10%	-12%	-9%	-7%	-3%	-1%	0%	-2%

Note: The percentage change is not recorded in the above table for groups with fewer than 10 placed applicants in that cycle or in the 2017 cycle.

R.8 Placed 18 year old applicants by region of domicile: 15 days after A level results day

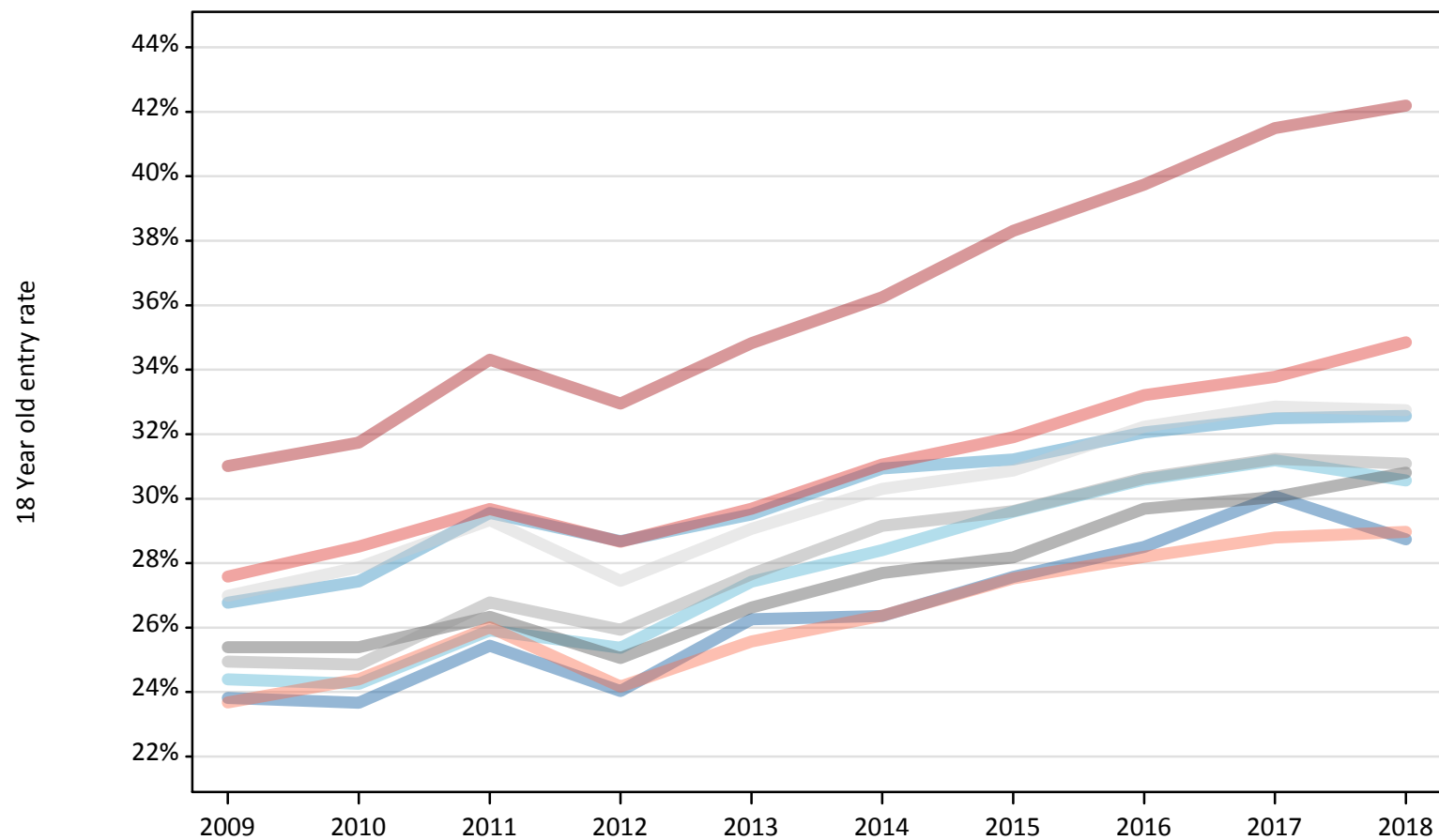
Placed 18 year old applicants: absolute change relative to 2017 cycle totals

Applicant Status	Domicile	2009	2010	2011	2012	2013	2014	2015	2016	2017	2018
Placed	North East	-590	-600	-480	-1,100	-560	-700	-200	-200	0	-620
	North West	-1,210	-1,000	-340	-1,590	-1,420	-620	380	-60	0	-760
	Yorkshire and The Humber	-2,600	-2,810	-2,210	-2,690	-1,960	-1,160	-390	-150	0	-1,020
	East Midlands	-1,550	-1,820	-1,570	-2,120	-1,510	-1,240	-750	-260	0	-270
	West Midlands	-2,500	-2,870	-2,230	-2,570	-1,690	-930	-10	180	0	-440
	East of England	-3,170	-2,860	-2,010	-2,880	-2,070	-1,500	-760	-170	0	-680
	London	-10,390	-9,900	-7,760	-8,600	-6,670	-5,230	-2,620	-1,560	0	800
	South East	-5,620	-4,830	-4,240	-4,750	-4,120	-3,300	-1,510	-390	0	160
	South West	-2,160	-1,970	-1,120	-2,140	-1,640	-1,350	-170	-280	0	-390
	(England total)	-29,780	-28,660	-21,950	-28,450	-21,640	-16,010	-6,030	-2,890	0	-3,210
	Scotland	-150	120	-640	-520	-490	-330	-240	-20	0	-40
	Northern Ireland	880	370	120	-130	300	80	-40	110	0	-290
	Wales	90	-490	-860	-550	-610	-220	230	330	0	-160
	UK	-28,960	-28,650	-23,330	-29,650	-22,440	-16,470	-6,070	-2,470	0	-3,700

R.9 Placed 18 year old applicants by region of domicile: 15 days after A level results day

Placed 18 year old applicants: entry rate

- North East
- North West
- Yorkshire and The Humber
- East Midlands
- West Midlands
- East of England
- London
- South East
- South West



R.10 Placed 18 year old applicants by region of domicile: 15 days after A level results day

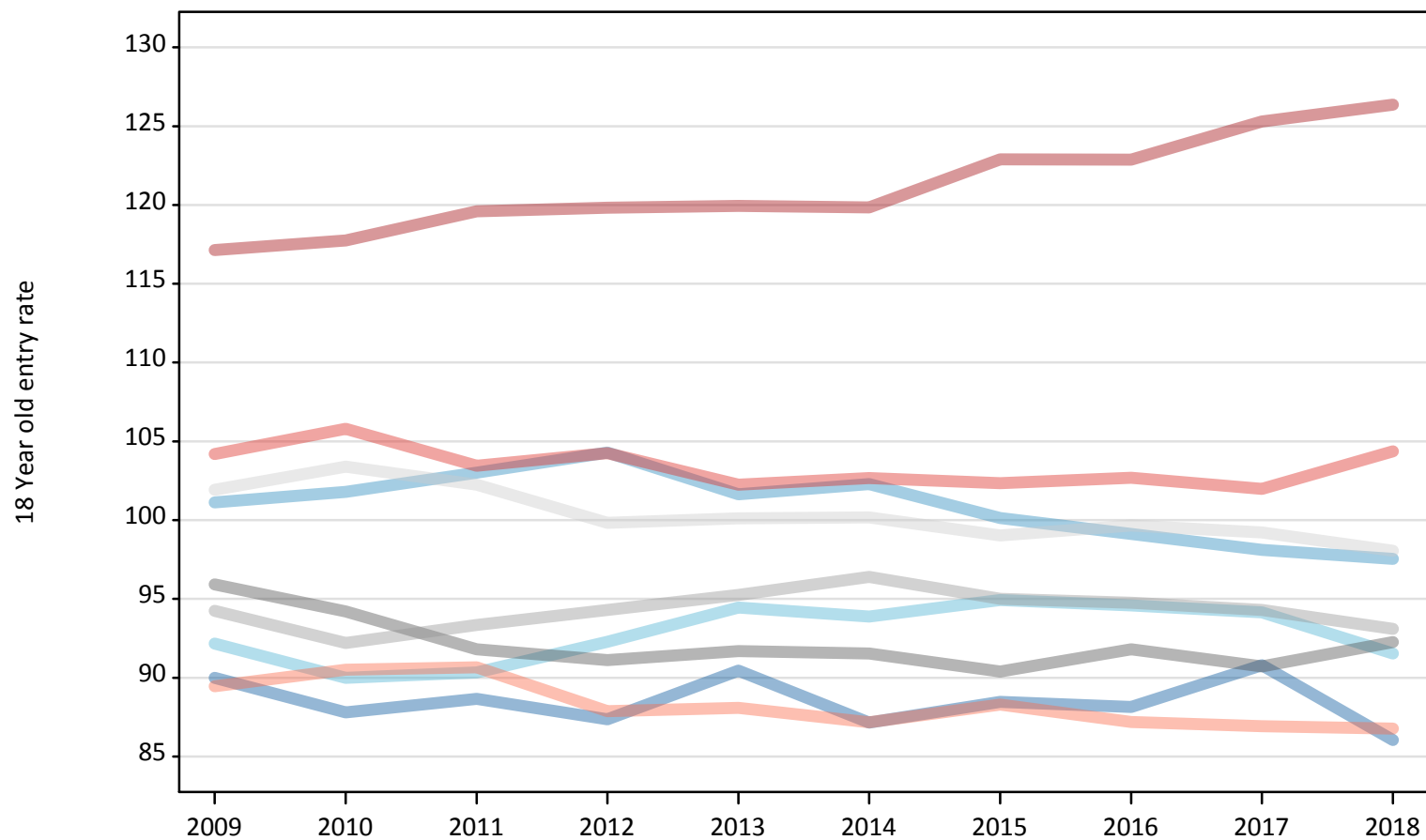
Placed 18 year old applicants: entry rate

Applicant Status	Domicile	2009	2010	2011	2012	2013	2014	2015	2016	2017	2018
Placed	North East	23.8%	23.7%	25.4%	24.0%	26.3%	26.4%	27.6%	28.5%	30.1%	28.7%
	North West	26.8%	27.4%	29.6%	28.7%	29.5%	30.9%	31.2%	32.1%	32.5%	32.6%
	Yorkshire and The Humber	24.4%	24.3%	25.9%	25.4%	27.4%	28.4%	29.6%	30.6%	31.2%	30.6%
	East Midlands	25.4%	25.4%	26.3%	25.1%	26.6%	27.7%	28.2%	29.7%	30.0%	30.8%
	West Midlands	24.9%	24.8%	26.8%	25.9%	27.7%	29.2%	29.6%	30.6%	31.2%	31.1%
	East of England	27.0%	27.9%	29.3%	27.5%	29.1%	30.3%	30.9%	32.2%	32.9%	32.7%
	London	31.0%	31.7%	34.3%	33.0%	34.8%	36.3%	38.3%	39.7%	41.5%	42.2%
	South East	27.6%	28.5%	29.7%	28.7%	29.7%	31.1%	31.9%	33.2%	33.8%	34.9%
	South West	23.7%	24.4%	26.0%	24.2%	25.6%	26.4%	27.5%	28.2%	28.8%	29.0%
	(England total)	26.5%	27.0%	28.7%	27.5%	29.0%	30.2%	31.2%	32.3%	33.1%	33.4%
	Scotland	22.4%	23.1%	22.3%	22.8%	23.0%	23.4%	24.0%	24.9%	25.6%	26.3%
	Northern Ireland	36.0%	34.7%	34.4%	33.2%	35.8%	35.3%	34.0%	35.1%	35.0%	35.3%
	Wales	25.7%	24.6%	24.4%	25.2%	25.6%	26.9%	27.9%	29.2%	29.0%	29.4%
	UK	26.4%	26.8%	28.1%	27.2%	28.6%	29.7%	30.5%	31.7%	32.4%	32.7%

R.11 Placed 18 year old applicants by region of domicile: 15 days after A level results day

Placed 18 year old applicants: entry rates (indexed to 100 = England)

- North East
- North West
- Yorkshire and The Humber
- East Midlands
- West Midlands
- East of England
- London
- South East
- South West



R.12 Placed 18 year old applicants by region of domicile: 15 days after A level results day

Placed 18 year old applicants: entry rate (indexed to 100 = England)

Applicant Status	Domicile	2009	2010	2011	2012	2013	2014	2015	2016	2017	2018
Placed	North East	90	88	89	87	90	87	88	88	91	86
	North West	101	102	103	104	102	102	100	99	98	98
	Yorkshire and The Humber	92	90	90	92	94	94	95	95	94	92
	East Midlands	96	94	92	91	92	92	90	92	91	92
	West Midlands	94	92	93	94	95	96	95	95	94	93
	East of England	102	103	102	100	100	100	99	100	99	98
	London	117	118	120	120	120	120	123	123	125	126
	South East	104	106	103	104	102	103	102	103	102	104
	South West	89	91	91	88	88	87	88	87	87	87
	(England total)	100	100	100	100	100	100	100	100	100	100