

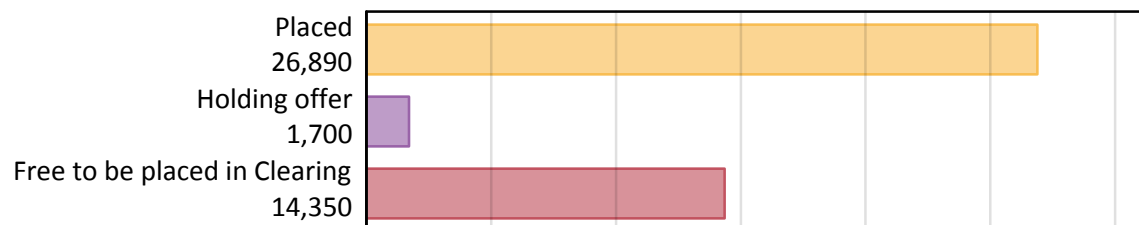
Daily Clearing Analysis: Overview

B7 Nursing analysis at 00:05 on Thursday 13 September 2018 (28 days after A level results day)

AB.1 Placed applicants to nursing from all domiciles, 2018 cycle

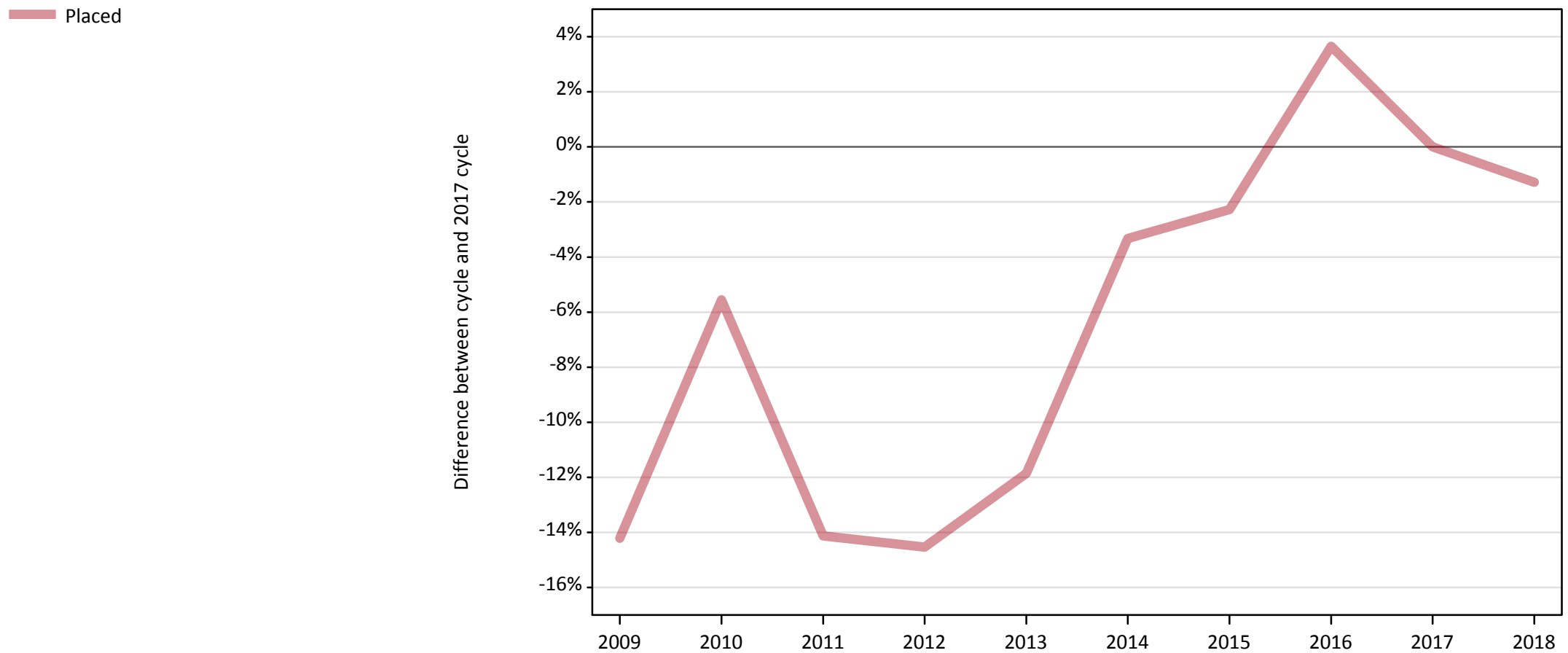
Applicant type	Status	2018
Main scheme	Placed (Clearing)	1,970
	Placed (Adjustment)	10
	Placed (Firm)	22,410
	Placed (Insurance)	550
	Placed (Other)	1,170
	Holding offer	1,700
	Free to be placed in Clearing	14,350
Direct to Clearing	Placed (Direct to Clearing)	780
	Other (Direct to Clearing)	360
All applicants	Placed	26,890

AB.2 Summary of nursing applicants who are placed, holding offers or free to be placed in Clearing (all domiciles)



AB.3 Placed applicants to nursing from all domiciles: 28 days after A level results day

Placed applicants to nursing: difference between cycle and 2017 cycle



Note: The percentage change is not plotted in the above chart for groups with fewer than 30 placed applicants in any one cycle.

AB.4 Placed applicants to nursing from all domiciles: 28 days after A level results day

Placed applicants to nursing: applicants at 28 days after A level results day

Applicant type	Status	2009	2010	2011	2012	2013	2014	2015	2016	2017	2018
All applicants	Placed	23,370	25,730	23,390	23,280	24,010	26,340	26,620	28,240	27,240	26,890

AB.5 Placed applicants to nursing from all domiciles: 28 days after A level results day

Placed applicants to nursing: difference between cycle and 2017 cycle

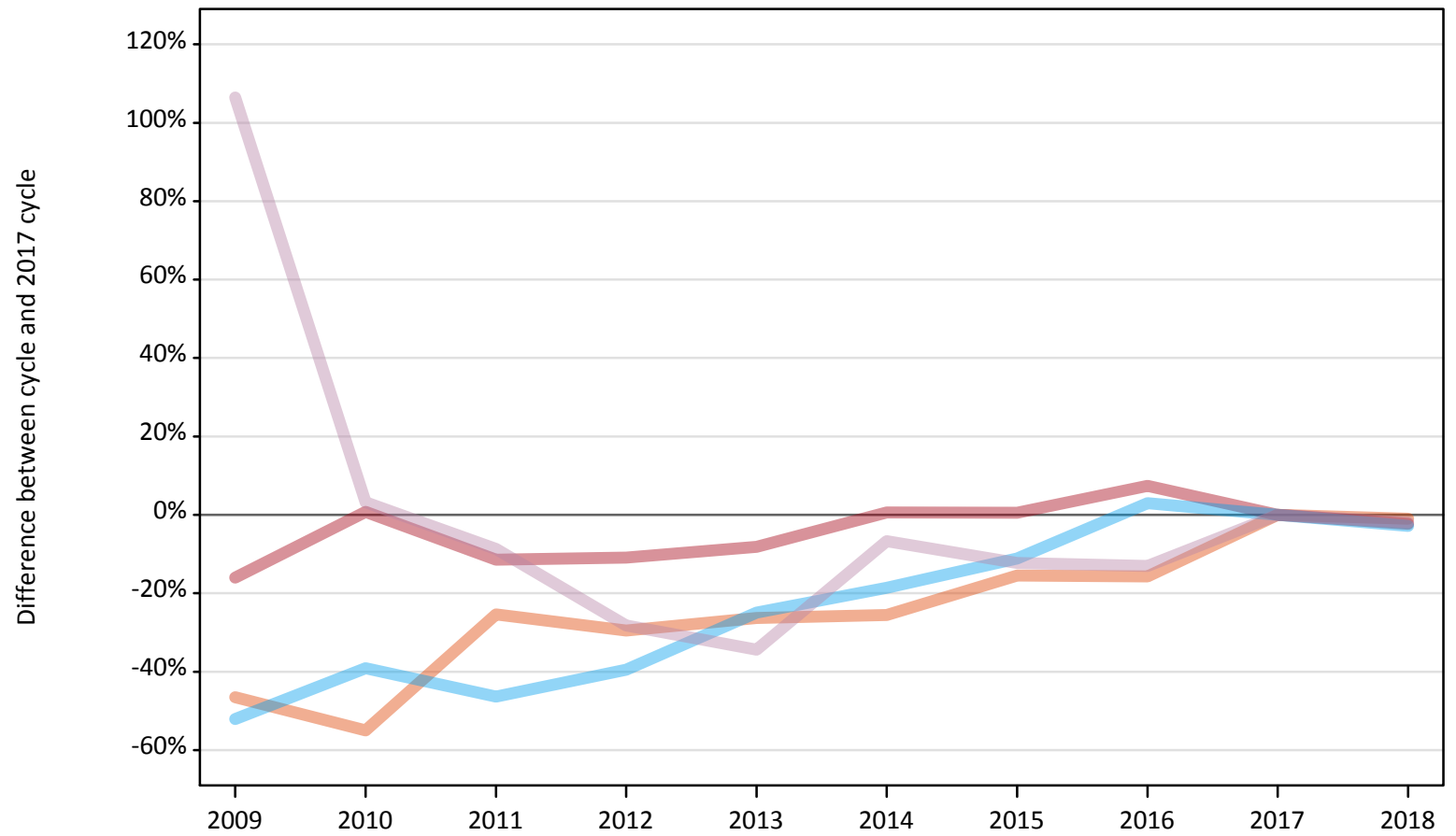
Applicant type	Status	2009	2010	2011	2012	2013	2014	2015	2016	2017	2018
All applicants	Placed	-14%	-6%	-14%	-15%	-12%	-3%	-2%	4%	0%	-1%

Note: The percentage change is not recorded in the above table for groups with fewer than 10 placed applicants in that cycle or in the 2017 cycle.

AB.6 Placed main scheme applicants to nursing from all domiciles: 28 days after A level results day

All Main scheme placed routes (excluding Adjustment): difference between cycle and 2017 cycle

- Placed (Clearing)
- Placed (Firm)
- Placed (Insurance)
- Placed (Other)



Note: The percentage change is not plotted in the above chart for groups with fewer than 30 placed applicants in any one cycle.

AB.7 Placed main scheme applicants to nursing from all domiciles: 28 days after A level results day

All Main scheme placed routes (excluding Adjustment): applicants at 28 days after A level results day

Applicant type	Status	2009	2010	2011	2012	2013	2014	2015	2016	2017	2018
Main scheme	Placed (Clearing)	1,070	900	1,490	1,410	1,470	1,480	1,690	1,680	1,990	1,970
	Placed (Firm)	19,260	23,100	20,300	20,430	21,050	23,060	23,050	24,620	22,920	22,410
	Placed (Insurance)	270	340	300	340	420	460	500	580	570	550
	Placed (Other)	2,460	1,230	1,090	860	780	1,110	1,050	1,040	1,190	1,170

AB.8 Placed main scheme applicants to nursing from all domiciles: 28 days after A level results day

All Main scheme placed routes (excluding Adjustment): difference between cycle and 2017 cycle

Applicant type	Status	2009	2010	2011	2012	2013	2014	2015	2016	2017	2018
Main scheme	Placed (Clearing)	-47%	-55%	-25%	-29%	-26%	-26%	-15%	-16%	0%	-1%
	Placed (Firm)	-16%	1%	-11%	-11%	-8%	1%	1%	7%	0%	-2%
	Placed (Insurance)	-52%	-39%	-46%	-39%	-25%	-19%	-11%	3%	0%	-3%
	Placed (Other)	106%	3%	-9%	-28%	-34%	-7%	-12%	-13%	0%	-2%

Note: The percentage change is not recorded in the above table for groups with fewer than 10 placed applicants in that cycle or in the 2017 cycle.

AB.9 Main scheme applicants placed to nursing through adjustment: 28 days after A level results day

Placed through adjustment: difference between cycle and 2017 cycle

[This chart is not part of this report]

AB.10 Main scheme applicants placed to nursing through adjustment: 28 days after A level results day

Placed through adjustment: applicants at 28 days after A level results day

Applicant type	Status	2009	2010	2011	2012	2013	2014	2015	2016	2017	2018
Main scheme	Placed (Adjustment)	0	0	0	0	10	10	10	0	20	10

AB.11 Main scheme applicants placed to nursing through adjustment: 28 days after A level results day

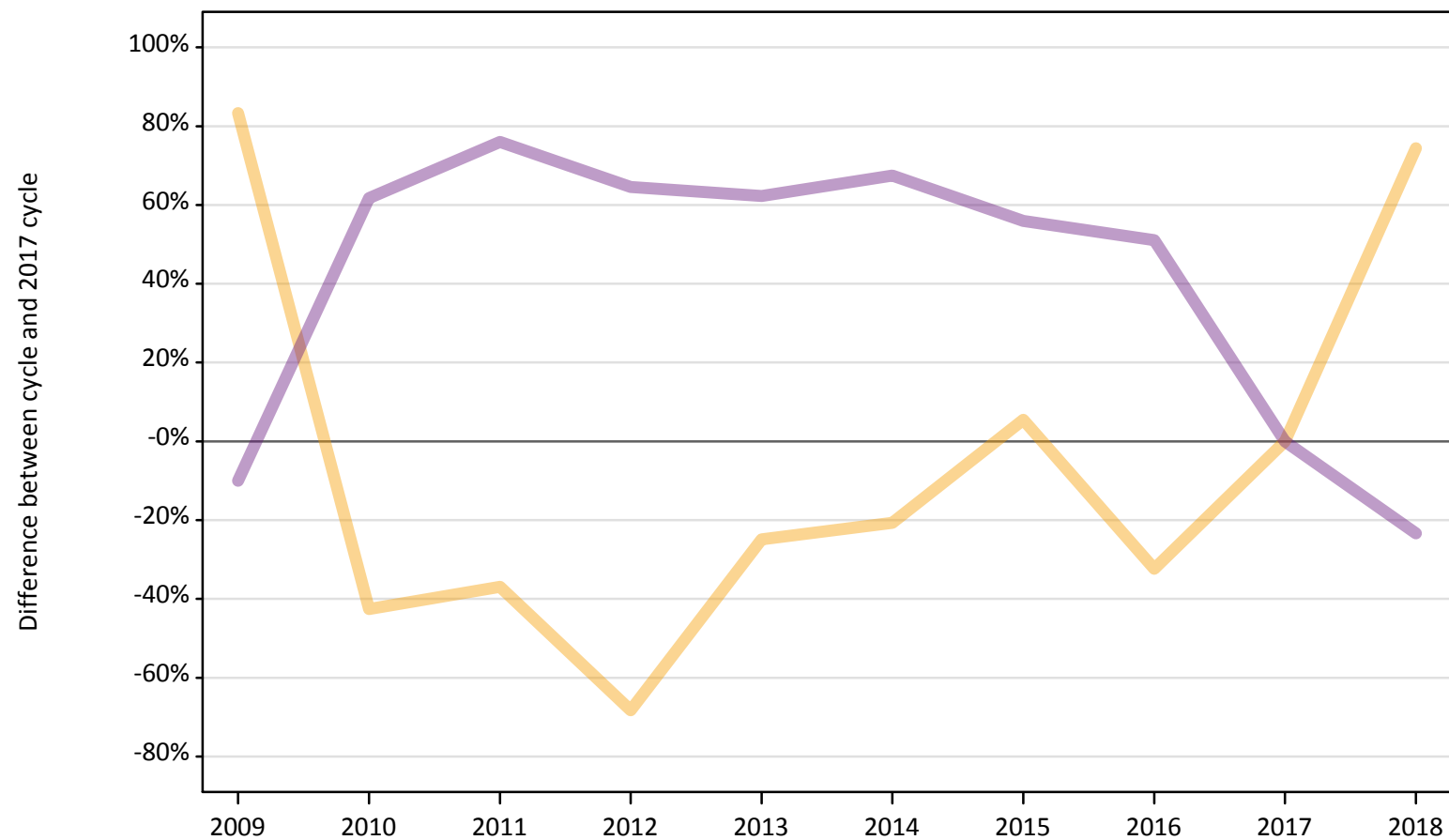
Placed through adjustment: difference between cycle and 2017 cycle

[This table is not part of this report]

AB.12 Main scheme applicants to nursing not currently placed from all domiciles: 28 days after A level results day

Applicants in unplaced states: difference between cycle and 2017 cycle

— Holding offer
— Free to be placed in Clearing



Note: The percentage change is not plotted in the above chart for groups with fewer than 30 unplaced applicants in any one cycle.

AB.13 Main scheme applicants to nursing not currently placed from all domiciles: 28 days after A level results day

Applicants in unplaced states: applicants at 28 days after A level results day

Applicant type	Status	2009	2010	2011	2012	2013	2014	2015	2016	2017	2018
Main scheme	Holding offer	1,780	560	610	310	730	770	1,030	660	970	1,700
	Free to be placed in Clearing	16,840	30,260	32,940	30,790	30,360	31,330	29,180	28,270	18,710	14,350

AB.14 Main scheme applicants to nursing not currently placed from all domiciles: 28 days after A level results day

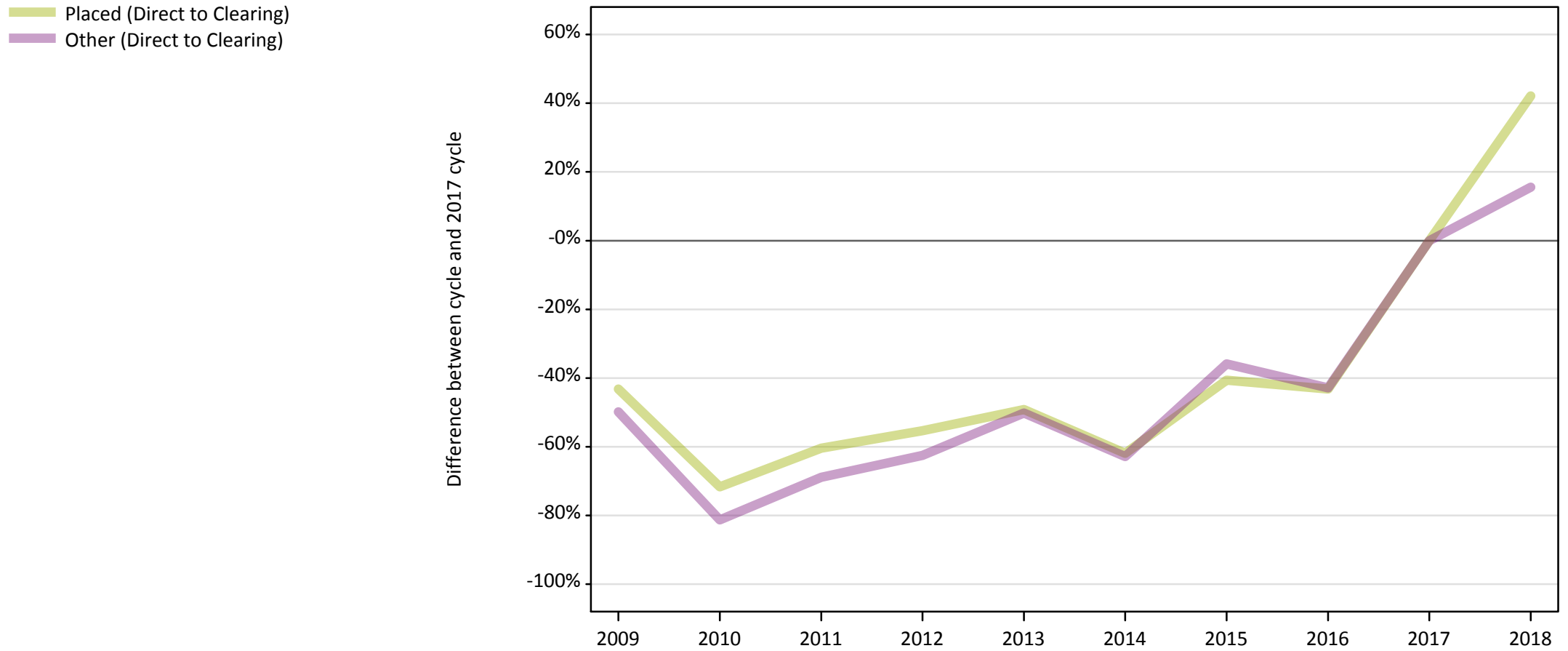
Applicants in unplaced states: difference between cycle and 2017 cycle

Applicant type	Status	2009	2010	2011	2012	2013	2014	2015	2016	2017	2018
Main scheme	Holding offer	83%	-43%	-37%	-68%	-25%	-21%	5%	-32%	0%	74%
	Free to be placed in Clearing	-10%	62%	76%	65%	62%	67%	56%	51%	0%	-23%

Note: The percentage change is not recorded in the above table for groups with fewer than 10 unplaced applicants in that cycle or in the 2017 cycle.

AB.15 Direct to Clearing applicants from all domiciles: 28 days after A level results day

Direct to Clearing: difference between cycle and 2017 cycle



Note: The percentage change is not plotted in the above chart for groups with fewer than 30 placed applicants in any one cycle.

AB.16 Direct to Clearing applicants from all domiciles: 28 days after A level results day

Direct to Clearing 28 days after A level results day

Applicant type	Status	2009	2010	2011	2012	2013	2014	2015	2016	2017	2018
Direct to Clearing	Placed (Direct to Clearing)	310	160	220	250	280	210	330	310	550	780
	Other (Direct to Clearing)	160	60	100	120	160	120	200	180	320	360

AB.17 Direct to Clearing applicants from all domiciles: 28 days after A level results day

Direct to Clearing: difference between cycle and 2017 cycle

Applicant type	Status	2009	2010	2011	2012	2013	2014	2015	2016	2017	2018
Direct to Clearing	Placed (Direct to Clearing)	-43%	-72%	-60%	-55%	-49%	-62%	-41%	-43%	0%	42%
	Other (Direct to Clearing)	-50%	-81%	-69%	-63%	-50%	-63%	-36%	-43%	0%	16%

Note: The percentage change is not recorded in the above table for groups with fewer than 10 placed applicants in that cycle or in the 2017 cycle.