

U40 University of the West of Scotland

Cycle years: 2013 - 2018

Cycle Reference Point: End of Cycle

Applicant coverage: UK domiciled

Reporting groups: Sex, POLAR4, SIMD 2016, ethnic group

Applicant statistics: June deadline applicants, placed June deadline applicants, all placed applicants, June deadline applicants per 10,000 population, placed June deadline applicants per 10,000 population, all placed applicants per 10,000 population

Application statistics: June deadline applications, offers, offer rate, average offer rate, percentage point difference between offer rate and average offer rate, contribution of group to the average offer rate

Non-disclosure controls: To avoid the disclosure of information about any individual the following measures are taken

- Applicants, placed applicants, applications and offers are rounded to the nearest 5.
- Applicants/placed applicants per 10,000 population figures are reported as 0 if the applicant/placed applicant figures are rounded to 0.
- All statistics related to the offer rate are not reported when the number of applications for a group is less than 10. The percentage point difference between the offer rate and the average offer rate is not reported when the number of applications for a group is less than 50.
- Offer rates are reported as 0% if there are fewer than 5 offers, and 100% if the number of offers is within 5 of the number of applications. When the offer rate is reported as 0% or 100%, it is reported in italics.

Contents:

18 year old applicants:	P.1
18 year old applications:	P.2
18 year old applicants by sex:	P.3
18 year old applications by sex:	P.4
18 year old applicants by POLAR4 quintile:	P.7
18 year old applications by POLAR4 quintile:	P.8
18 year old, Scotland domiciled applicants by SIMD 2016 quintile:	P.11
18 year old, Scotland domiciled applications by SIMD 2016 quintile:	P.12
18 year old applicants by ethnic group:	P.15
18 year old applications by ethnic group:	P.16
Applicants (all ages):	P.19
Applications (all ages):	P.20
Applicants (all ages) by sex:	P.21
Applications (all ages) by sex:	P.22
Applicants (all ages) by POLAR4 quintile:	P.23
Applications (all ages) by POLAR4 quintile:	P.24
Scotland domiciled applicants (all ages) by SIMD 2016 quintile:	P.25
Scotland domiciled applications (all ages) by SIMD 2016 quintile:	P.26
Applicants (all ages) by ethnic group:	P.27
Applications (all ages) by ethnic group:	P.28

P.1 18 year old applicants

Statistic	2013	2014	2015	2016	2017	2018
June deadline applicants	3,695	4,080	3,915	3,595	3,400	3,785
Placed June deadline applicants	755	610	605	625	730	1,060
All placed applicants	970	740	870	810	920	1,145
June deadline applicants per 10,000 population	48.5	54.2	51.1	47.9	45.9	52.4
Placed June deadline applicants per 10,000	9.9	8.1	7.9	8.3	9.9	14.6
All placed applicants per 10,000 population	12.8	9.8	11.3	10.8	12.4	15.8

P.2 18 year old applications

Statistic	2013	2014	2015	2016	2017	2018
June deadline applications	4,885	5,425	4,920	4,525	4,215	4,825
Offers	3,310	3,380	3,185	3,110	3,070	3,850
Offer rate	67.8%	62.4%	64.8%	68.8%	72.9%	79.8%

P.3 18 year old applicants by sex

Statistic	Sex	2013	2014	2015	2016	2017	2018
June deadline applicants	Men	1,515	1,650	1,510	1,320	1,280	1,425
	Women	2,180	2,430	2,410	2,275	2,115	2,360
Placed June deadline applicants	Men	340	250	250	240	300	470
	Women	415	355	355	385	430	590
All placed applicants	Men	430	305	375	315	390	500
	Women	540	435	495	495	525	640
June deadline applicants per 10,000 population	Men	38.8	42.6	38.4	34.4	33.8	38.5
	Women	58.8	66.4	64.5	62.2	58.6	67.0
Placed June deadline applicants per 10,000 population	Men	8.7	6.5	6.4	6.3	8.0	12.6
	Women	11.3	9.8	9.5	10.5	11.9	16.8
All placed applicants per 10,000 population	Men	11.0	7.9	9.6	8.1	10.3	13.5
	Women	14.6	11.8	13.2	13.6	14.6	18.2

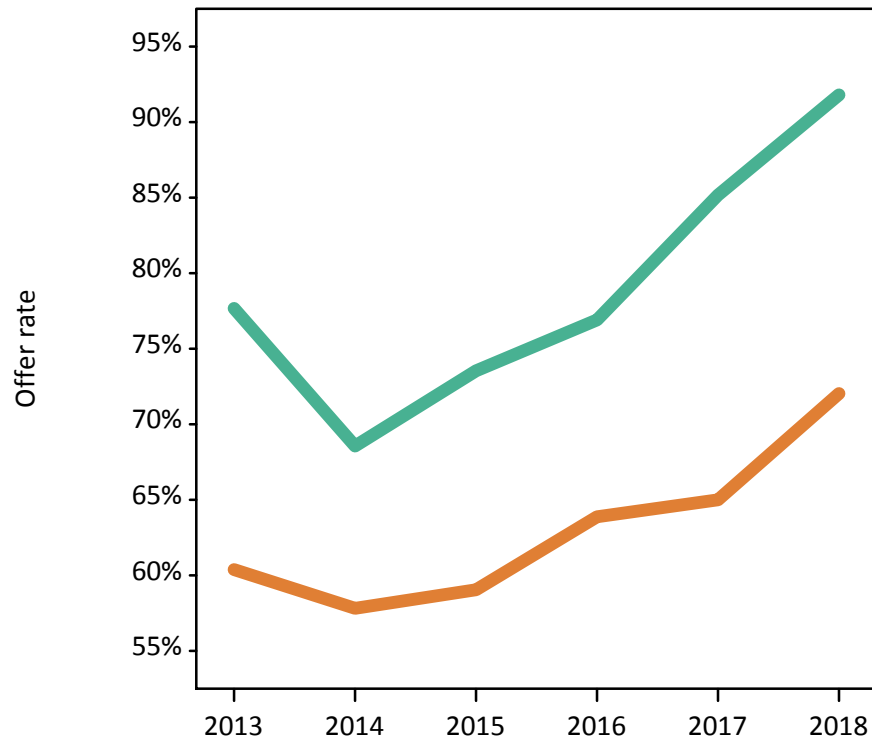
P.4 18 year old applications by sex

Statistic	Sex	2013	2014	2015	2016	2017	2018
June deadline applications	Men	2,090	2,290	1,935	1,700	1,640	1,900
	Women	2,790	3,135	2,985	2,820	2,575	2,925
Offers	Men	1,625	1,570	1,425	1,310	1,395	1,745
	Women	1,685	1,810	1,765	1,805	1,675	2,105
Offer rate	Men	77.7%	68.6%	73.5%	76.9%	85.2%	91.8%
	Women	60.4%	57.8%	59.1%	63.9%	65.0%	72.0%
Average offer rate	Men	77.5%	68.3%	73.3%	77.0%	84.9%	92.1%
	Women	60.5%	58.0%	59.2%	63.8%	65.2%	71.8%
Percentage point difference between offer rate and average offer rate	Men	0.2	0.3	0.2	-0.1	0.3	-0.3
	Women	-0.2	-0.2	-0.2	0.1	-0.2	0.2
Contribution of group to the average offer rate	Men	0.662	0.650	0.620	0.581	0.621	0.591
	Women	0.747	0.745	0.754	0.748	0.759	0.734

P.5 18 year old offer rate by sex

Note: The line for a group is not plotted when that group made fewer than 10 applications in any of the years from 2013-2018.

Men
Women



P.6 Percentage point difference between 18 year old offer rate and average offer rate by sex

Note: The line for a group is not plotted when that group made fewer than 50 applications in any of the years from 2013-2018.

Men
Women



P.7 18 year old applicants by POLAR4 quintile

Statistic	POLAR4 quintile	2013	2014	2015	2016	2017	2018
June deadline applicants	Quintile 1	190	260	220	220	245	255
	Quintile 2	505	630	580	550	525	590
	Quintile 3	700	810	820	780	720	710
	Quintile 4	915	990	935	810	765	915
	Quintile 5	1,375	1,385	1,360	1,225	1,135	1,305
Placed June deadline applicants	Quintile 1	35	30	30	30	45	70
	Quintile 2	105	85	70	75	100	170
	Quintile 3	135	130	135	150	145	200
	Quintile 4	195	145	130	130	155	250
	Quintile 5	290	215	240	235	290	365
All placed applicants	Quintile 1	45	35	40	35	50	75
	Quintile 2	125	100	100	90	125	180
	Quintile 3	180	155	170	185	180	215
	Quintile 4	250	180	205	170	205	265
	Quintile 5	370	270	355	325	355	405
June deadline applicants per 10,000 population	Quintile 1	13.6	18.6	15.5	16.3	18.5	19.6
	Quintile 2	34.9	43.7	39.8	38.8	37.6	43.6
	Quintile 3	47.1	55.3	54.6	53.1	49.8	50.4
	Quintile 4	59.5	64.9	60.5	53.0	50.7	62.1
	Quintile 5	79.7	81.4	78.2	71.1	66.3	77.5
Placed June deadline applicants per 10,000 population	Quintile 1	2.5	2.3	2.0	2.1	3.2	5.2
	Quintile 2	7.3	6.0	4.9	5.3	7.2	12.5
	Quintile 3	9.0	8.9	8.9	10.2	10.1	14.2
	Quintile 4	12.5	9.6	8.5	8.7	10.2	17.0
	Quintile 5	16.8	12.6	13.9	13.6	16.8	21.8
All placed applicants per 10,000 population	Quintile 1	3.3	2.6	2.7	2.6	3.9	5.6
	Quintile 2	8.5	7.1	7.0	6.4	8.9	13.4
	Quintile 3	12.2	10.5	11.3	12.7	12.5	15.3
	Quintile 4	16.2	11.7	13.2	11.2	13.6	18.1
	Quintile 5	21.4	15.8	20.4	18.7	20.8	23.9

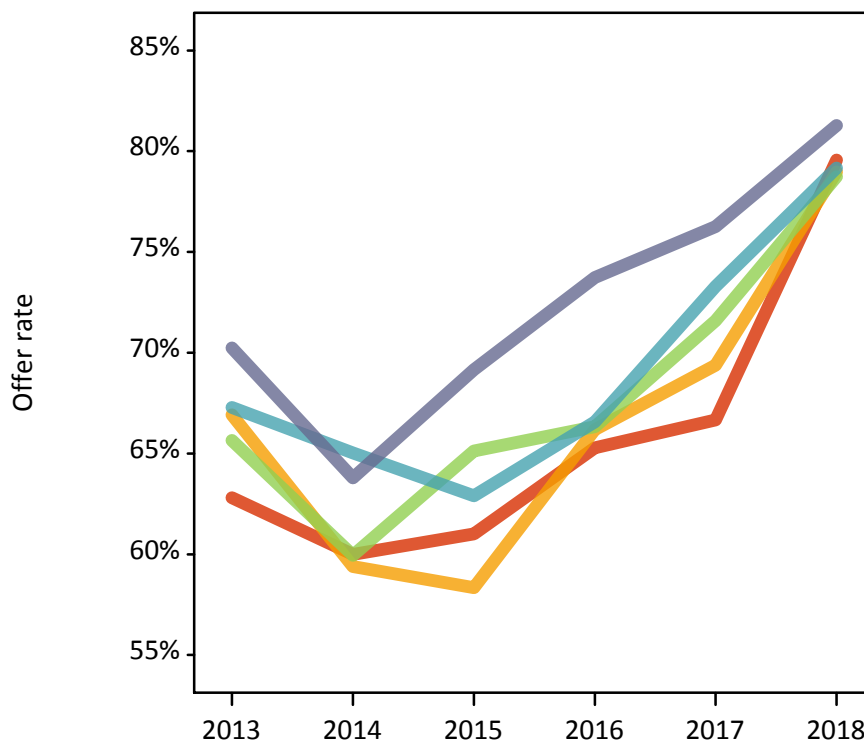
P.8 18 year old applications by POLAR4 quintile

Statistic	POLAR4 quintile	2013	2014	2015	2016	2017	2018
June deadline applications	Quintile 1	250	335	260	265	295	325
	Quintile 2	680	845	735	685	675	760
	Quintile 3	920	1,100	1,020	1,000	885	915
	Quintile 4	1,245	1,300	1,185	1,015	930	1,145
	Quintile 5	1,780	1,830	1,715	1,550	1,420	1,665
Offers	Quintile 1	155	200	160	175	200	255
	Quintile 2	455	505	430	455	470	600
	Quintile 3	605	660	665	665	635	720
	Quintile 4	840	845	745	675	685	910
	Quintile 5	1,250	1,170	1,185	1,140	1,080	1,355
Offer rate	Quintile 1	62.8%	60.0%	61.0%	65.3%	66.7%	79.6%
	Quintile 2	66.9%	59.4%	58.3%	66.2%	69.4%	79.0%
	Quintile 3	65.7%	59.9%	65.1%	66.3%	71.6%	78.7%
	Quintile 4	67.3%	65.0%	62.9%	66.6%	73.3%	79.2%
	Quintile 5	70.2%	63.8%	69.2%	73.7%	76.3%	81.3%
Average offer rate	Quintile 1	64.6%	61.4%	63.2%	67.4%	68.7%	80.1%
	Quintile 2	67.1%	60.9%	61.0%	68.5%	71.5%	78.7%
	Quintile 3	65.7%	60.9%	64.7%	66.9%	71.9%	79.9%
	Quintile 4	68.0%	62.4%	63.3%	67.1%	72.7%	78.9%
	Quintile 5	69.4%	64.1%	67.6%	71.6%	75.0%	80.9%
Percentage point difference between offer rate and average offer rate	Quintile 1	-1.8	-1.4	-2.2	-2.1	-2.1	-0.5
	Quintile 2	-0.2	-1.5	-2.7	-2.4	-2.2	0.3
	Quintile 3	-0.0	-1.0	0.4	-0.5	-0.3	-1.2
	Quintile 4	-0.7	2.6	-0.4	-0.5	0.6	0.3
	Quintile 5	0.8	-0.3	1.5	2.1	1.3	0.4
Contribution of group to the average offer rate	Quintile 1	0.127	0.135	0.162	0.139	0.153	0.108
	Quintile 2	0.177	0.198	0.194	0.205	0.213	0.176
	Quintile 3	0.239	0.245	0.251	0.257	0.253	0.216
	Quintile 4	0.295	0.277	0.278	0.264	0.260	0.253
	Quintile 5	0.406	0.376	0.399	0.385	0.374	0.368

P.9 18 year old offer rate by POLAR4 quintile

Note: The line for a group is not plotted when that group made fewer than 10 applications in any of the years from 2013-2018.

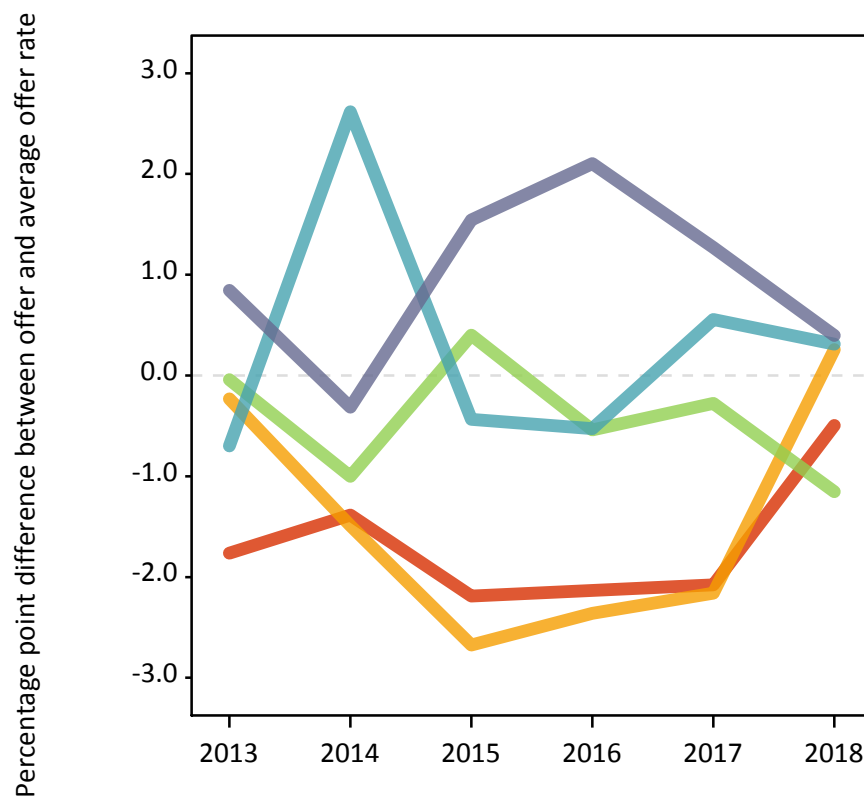
- Quintile 1
- Quintile 2
- Quintile 3
- Quintile 4
- Quintile 5



P.10 Percentage point difference between 18 year old offer rate and average offer rate by POLAR4 quintile

Note: The line for a group is not plotted when that group made fewer than 50 applications in any of the years from 2013-2018.

- Quintile 1
- Quintile 2
- Quintile 3
- Quintile 4
- Quintile 5



P.11 18 year old, Scotland domiciled applicants by SIMD 2016 quintile

Statistic	SIMD quintile	2013	2014	2015	2016	2017	2018
June deadline applicants	Quintile 1	570	730	675	670	655	720
	Quintile 2	670	740	675	675	630	675
	Quintile 3	710	735	755	610	620	710
	Quintile 4	745	810	735	670	625	750
	Quintile 5	765	830	835	765	670	770
Placed June deadline applicants	Quintile 1	130	110	85	110	125	190
	Quintile 2	140	130	100	120	130	190
	Quintile 3	145	105	140	115	155	235
	Quintile 4	170	120	135	120	150	215
	Quintile 5	160	135	135	150	165	210
All placed applicants	Quintile 1	160	130	120	130	155	200
	Quintile 2	185	150	140	150	165	200
	Quintile 3	195	120	180	155	200	250
	Quintile 4	205	155	195	165	185	235
	Quintile 5	210	175	210	200	205	230
June deadline applicants per 10,000 population	Quintile 1	445.2	575.4	549.7	555.5	563.5	631.1
	Quintile 2	567.5	629.9	590.7	611.3	586.9	637.5
	Quintile 3	599.9	628.2	645.4	542.6	572.9	676.7
	Quintile 4	604.3	659.8	612.3	558.3	534.3	666.5
	Quintile 5	596.0	646.2	656.7	610.4	536.0	646.7
Placed June deadline applicants per 10,000 population	Quintile 1	100.3	85.8	69.8	90.2	107.0	166.1
	Quintile 2	120.6	109.7	87.6	110.8	121.3	178.8
	Quintile 3	122.7	90.6	118.0	103.9	144.6	223.7
	Quintile 4	136.7	98.6	114.0	99.3	128.6	193.4
	Quintile 5	125.1	106.8	106.8	120.0	130.2	175.9
All placed applicants per 10,000 population	Quintile 1	124.6	103.1	96.6	109.3	134.6	176.7
	Quintile 2	155.5	125.8	124.5	136.2	152.1	191.1
	Quintile 3	165.0	103.4	153.0	139.4	182.4	239.9
	Quintile 4	166.7	125.4	163.9	136.0	159.5	211.2
	Quintile 5	164.7	137.2	165.8	158.4	164.5	194.3

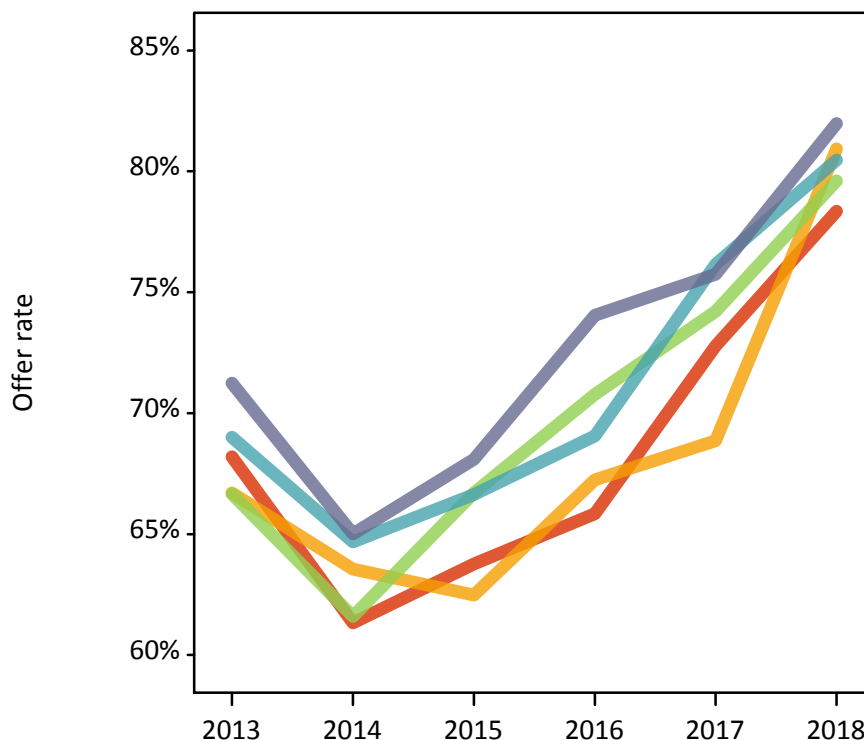
P.12 18 year old, Scotland domiciled applications by SIMD 2016 quintile

Statistic	SIMD quintile	2013	2014	2015	2016	2017	2018
June deadline applications	Quintile 1	785	1,000	885	885	825	960
	Quintile 2	935	1,020	855	865	820	840
	Quintile 3	925	965	945	765	790	900
	Quintile 4	970	1,075	940	850	765	985
	Quintile 5	1,020	1,125	1,055	950	810	970
Offers	Quintile 1	535	610	565	580	600	755
	Quintile 2	625	645	535	580	565	680
	Quintile 3	620	595	630	540	585	720
	Quintile 4	670	695	625	585	580	790
	Quintile 5	725	730	715	700	615	795
Offer rate	Quintile 1	68.2%	61.3%	63.8%	65.8%	72.8%	78.4%
	Quintile 2	66.7%	63.6%	62.5%	67.2%	68.9%	80.9%
	Quintile 3	66.7%	61.6%	66.7%	70.8%	74.2%	79.6%
	Quintile 4	69.0%	64.7%	66.6%	69.1%	76.1%	80.5%
	Quintile 5	71.2%	65.0%	68.1%	74.1%	75.7%	82.0%
Average offer rate	Quintile 1	69.6%	63.4%	65.6%	69.8%	74.2%	79.2%
	Quintile 2	67.6%	62.6%	65.3%	67.7%	71.1%	81.3%
	Quintile 3	66.8%	62.1%	65.2%	68.4%	73.6%	78.9%
	Quintile 4	69.1%	64.6%	64.6%	69.6%	74.7%	80.9%
	Quintile 5	69.2%	63.7%	67.5%	71.4%	74.1%	81.1%
Percentage point difference between offer rate and average offer rate	Quintile 1	-1.4	-2.1	-1.8	-3.9	-1.4	-0.9
	Quintile 2	-0.8	1.0	-2.8	-0.5	-2.2	-0.3
	Quintile 3	-0.2	-0.5	1.5	2.4	0.6	0.7
	Quintile 4	-0.1	0.1	2.0	-0.5	1.5	-0.4
	Quintile 5	2.1	1.3	0.6	2.7	1.6	0.9
Contribution of group to the average offer rate	Quintile 1	0.198	0.217	0.214	0.234	0.236	0.221
	Quintile 2	0.221	0.215	0.204	0.226	0.228	0.191
	Quintile 3	0.226	0.201	0.215	0.196	0.219	0.202
	Quintile 4	0.232	0.223	0.220	0.224	0.218	0.220
	Quintile 5	0.240	0.239	0.251	0.248	0.224	0.225

P.13 18 year old, Scotland domiciled offer rate by SIMD 2016 quintile

Note: The line for a group is not plotted when that group made fewer than 10 applications in any of the years from 2013-2018.

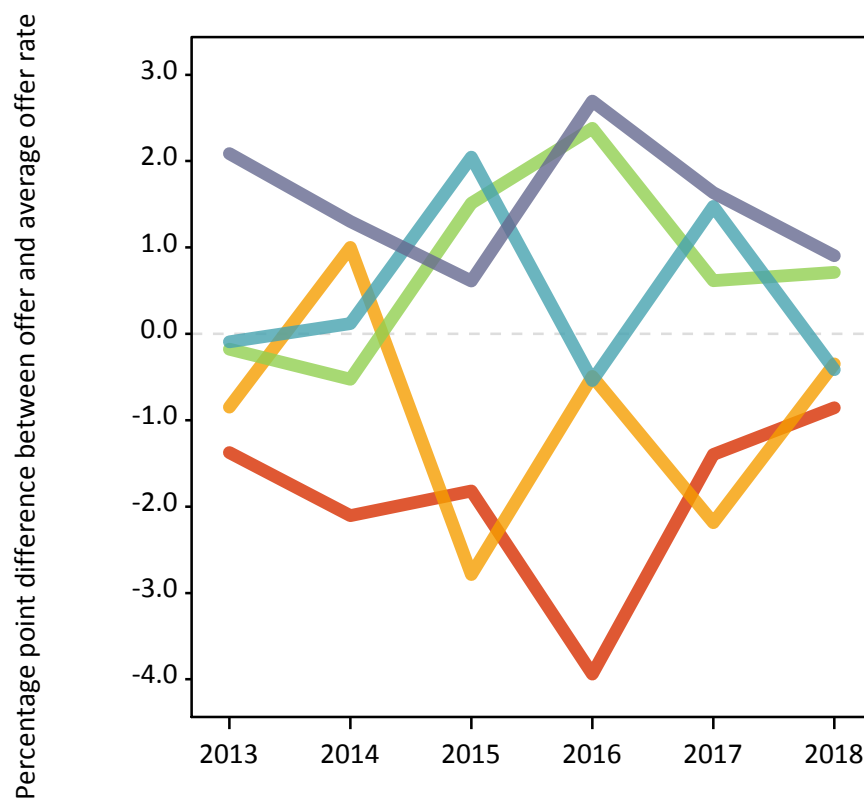
- Quintile 1
- Quintile 2
- Quintile 3
- Quintile 4
- Quintile 5



P.14 Percentage point difference between 18 year old, Scotland domiciled offer rate and average offer rate by SIMD 2016 quintile

Note: The line for a group is not plotted when that group made fewer than 50 applications in any of the years from 2013-2018.

- Quintile 1
- Quintile 2
- Quintile 3
- Quintile 4
- Quintile 5



P.15 18 year old applicants by ethnic group

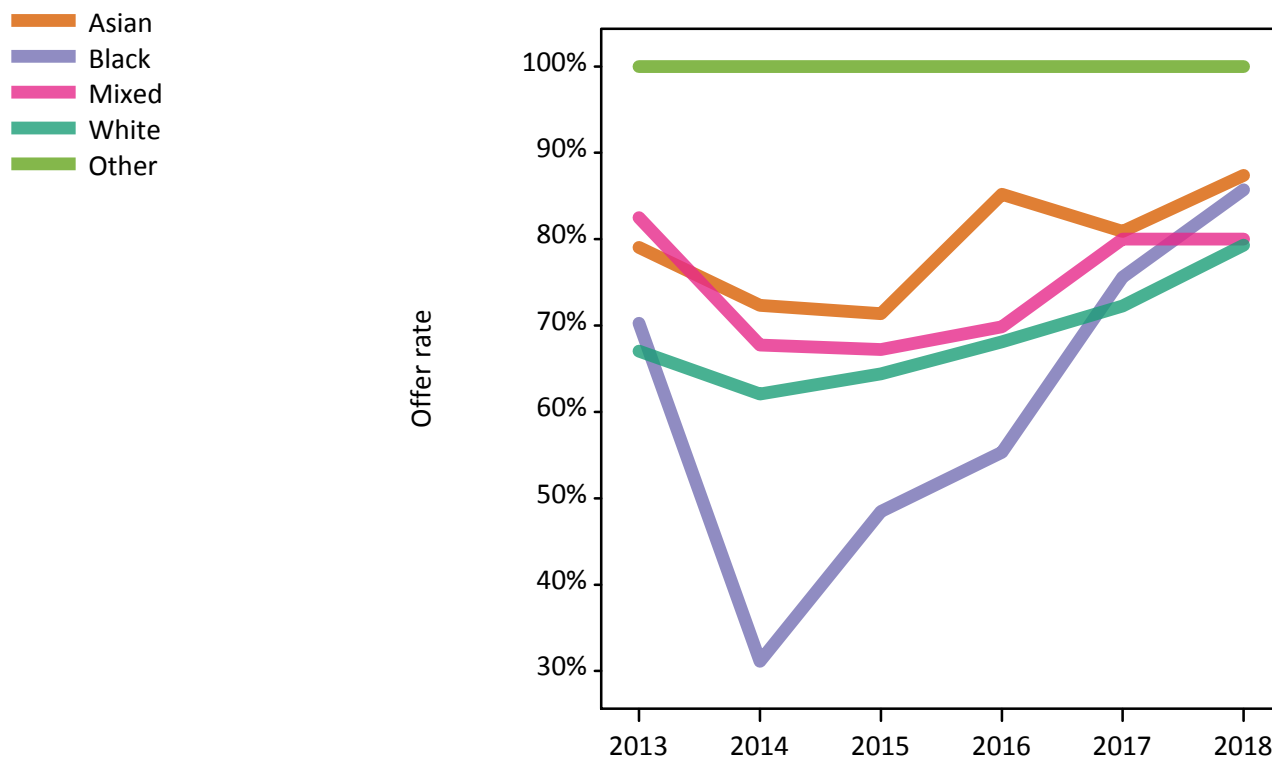
Statistic	Ethnic group	2013	2014	2015	2016	2017	2018
June deadline applicants	Asian	160	160	160	155	170	190
	Black	30	40	30	45	40	65
	Mixed	35	45	55	55	40	45
	White	3,450	3,820	3,645	3,315	3,120	3,455
	Other	15	10	15	15	20	20
Placed June deadline applicants	Asian	25	15	20	20	35	55
	Black	5	0	5	5	5	20
	Mixed	10	5	5	10	5	10
	White	720	585	570	585	680	965
	Other	5	0	5	5	5	5
All placed applicants	Asian	40	25	40	40	45	65
	Black	5	5	5	5	5	20
	Mixed	10	5	5	10	5	15
	White	910	705	805	750	855	1,035
	Other	5	0	5	5	5	5
June deadline applicants per 10,000 population	Asian	24.1	23.9	22.9	21.8	23.0	25.9
	Black	9.8	12.5	8.8	14.1	12.1	21.5
	Mixed	12.6	15.3	17.8	16.8	12.5	14.6
	White	54.8	61.9	58.5	54.8	52.6	60.2
	Other	16.5	9.7	16.6	14.1	18.4	17.1
Placed June deadline applicants per 10,000 population	Asian	3.6	2.5	3.0	3.1	5.0	7.4
	Black	1.3	0.0	0.9	1.3	1.3	6.7
	Mixed	3.0	1.4	1.6	2.5	1.2	3.7
	White	11.4	9.5	9.1	9.7	11.4	16.8
	Other	3.3	0.0	5.2	3.0	5.8	5.7
All placed applicants per 10,000 population	Asian	6.4	3.7	5.4	5.6	6.4	8.8
	Black	1.7	1.3	1.6	1.9	1.3	7.1
	Mixed	3.3	1.4	2.3	2.9	1.9	4.0
	White	14.5	11.4	12.9	12.4	14.4	18.0
	Other	3.3	0.0	7.3	4.0	5.8	5.7

P.16 18 year old applications by ethnic group

Statistic	Ethnic group	2013	2014	2015	2016	2017	2018
June deadline applications	Asian	210	225	205	195	205	230
	Black	35	45	35	45	40	75
	Mixed	40	60	60	65	45	60
	White	4,570	5,070	4,585	4,180	3,890	4,425
	Other	15	10	20	25	25	25
Offers	Asian	165	160	145	165	165	200
	Black	25	15	15	25	30	65
	Mixed	35	40	40	45	35	50
	White	3,065	3,145	2,950	2,845	2,810	3,510
	Other	15	5	15	20	20	20
Offer rate	Asian	79.0%	72.3%	71.4%	85.2%	80.9%	87.4%
	Black	70.3%	31.1%	48.5%	55.3%	75.6%	85.7%
	Mixed	82.5%	67.7%	67.2%	69.8%	80.0%	80.0%
	White	67.0%	62.1%	64.4%	68.1%	72.2%	79.3%
	Other	100.0%	100.0%	100.0%	100.0%	100.0%	100.0%
Average offer rate	Asian	79.4%	76.4%	74.3%	82.4%	83.0%	88.5%
	Black	72.9%	59.1%	62.9%	72.3%	80.8%	88.1%
	Mixed	79.0%	67.9%	69.0%	72.1%	76.3%	84.8%
	White	67.0%	61.6%	64.2%	68.0%	72.2%	79.1%
	Other	90.5%	77.8%	77.0%	81.0%	77.6%	91.2%
Percentage point difference between offer rate and average offer rate	Asian	-0.4	-4.1	-2.9	2.8	-2.1	-1.1
	Black	N/A	N/A	N/A	N/A	N/A	-2.4
	Mixed	N/A	-0.1	-1.8	-2.2	N/A	-4.8
	White	-0.0	0.4	0.2	0.1	0.1	0.2
	Other	N/A	N/A	N/A	N/A	N/A	N/A
Contribution of group to the average offer rate	Asian	0.108	0.112	0.133	0.148	0.147	0.107
	Black	0.119	0.101	0.145	0.158	0.192	0.066
	Mixed	0.133	0.096	0.098	0.161	0.148	0.026
	White	0.943	0.940	0.940	0.935	0.933	0.923
	Other	0.061	0.068	0.065	0.081	0.112	0.064

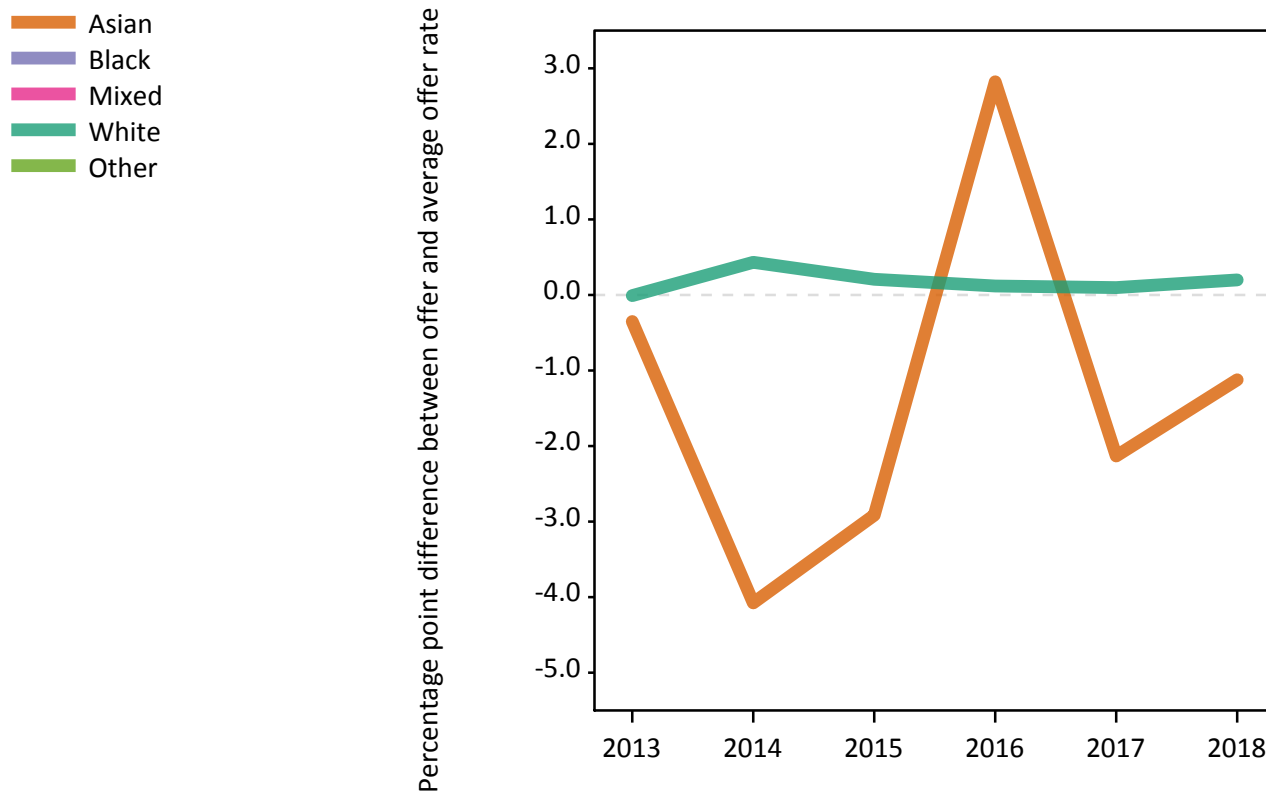
P.17 18 year old offer rate by ethnic group

Note: The line for a group is not plotted when that group made fewer than 10 applications in any of the years from 2013-2018.



P.18 Percentage point difference between 18 year old offer rate and average offer rate by ethnic group

Note: The line for a group is not plotted when that group made fewer than 50 applications in any of the years from 2013-2018.



P.19 Applicants (all ages)

Statistic	2013	2014	2015	2016	2017	2018
June deadline applicants	10,925	11,700	13,315	13,175	12,980	13,875
Placed June deadline applicants	3,095	2,925	3,235	3,195	3,585	4,040
All placed applicants	3,730	3,305	3,985	3,825	4,235	4,440

P.20 Applications (all ages)

Statistic	2013	2014	2015	2016	2017	2018
June deadline applications	14,805	16,320	17,890	17,630	17,490	18,875
Offers	8,640	8,880	9,080	9,245	9,830	11,225
Offer rate	58.4%	54.4%	50.8%	52.4%	56.2%	59.5%

P.21 Applicants (all ages) by sex

Statistic	Sex	2013	2014	2015	2016	2017	2018
June deadline applicants	Men	4,265	4,400	4,595	4,520	4,295	4,675
	Women	6,660	7,300	8,720	8,655	8,685	9,200
Placed June deadline applicants	Men	1,280	1,125	1,170	1,110	1,190	1,460
	Women	1,815	1,795	2,065	2,085	2,395	2,585
All placed applicants	Men	1,530	1,280	1,495	1,380	1,500	1,610
	Women	2,195	2,030	2,490	2,440	2,740	2,825

P.22 Applications (all ages) by sex

Statistic	Sex	2013	2014	2015	2016	2017	2018
June deadline applications	Men	5,940	6,310	6,120	6,020	5,780	6,440
	Women	8,865	10,010	11,770	11,615	11,710	12,435
Offers	Men	4,040	3,925	3,770	3,775	3,925	4,665
	Women	4,600	4,955	5,310	5,475	5,905	6,560
Offer rate	Men	68.0%	62.2%	61.6%	62.7%	67.9%	72.4%
	Women	51.9%	49.5%	45.1%	47.1%	50.4%	52.8%

P.23 Applicants (all ages) by POLAR4 quintile

Statistic	POLAR4 quintile	2013	2014	2015	2016	2017	2018
June deadline applicants	Quintile 1	715	895	935	950	1,030	1,015
	Quintile 2	1,745	2,000	2,205	2,175	2,195	2,355
	Quintile 3	2,315	2,585	2,890	2,865	2,780	2,895
	Quintile 4	2,620	2,720	3,030	3,035	2,910	3,210
	Quintile 5	3,505	3,485	4,240	4,120	4,035	4,365
Placed June deadline applicants	Quintile 1	195	225	220	240	285	290
	Quintile 2	495	540	570	510	620	750
	Quintile 3	685	680	745	740	805	890
	Quintile 4	725	645	690	725	815	910
	Quintile 5	995	830	1,010	975	1,060	1,190
All placed applicants	Quintile 1	215	250	275	275	335	315
	Quintile 2	575	600	680	600	710	835
	Quintile 3	845	755	890	890	950	970
	Quintile 4	880	725	880	855	965	995
	Quintile 5	1,195	975	1,255	1,195	1,265	1,310

P.24 Applications (all ages) by POLAR4 quintile

Statistic	POLAR4 quintile	2013	2014	2015	2016	2017	2018
June deadline applications	Quintile 1	970	1,210	1,260	1,285	1,385	1,420
	Quintile 2	2,375	2,885	3,035	3,005	3,055	3,315
	Quintile 3	3,165	3,675	3,875	3,915	3,760	3,965
	Quintile 4	3,545	3,705	4,030	4,010	3,920	4,295
	Quintile 5	4,720	4,825	5,660	5,385	5,325	5,830
Offers	Quintile 1	520	630	610	670	735	820
	Quintile 2	1,315	1,500	1,525	1,500	1,670	1,950
	Quintile 3	1,845	1,930	1,960	2,080	2,155	2,335
	Quintile 4	2,045	2,100	2,015	2,025	2,165	2,525
	Quintile 5	2,895	2,710	2,955	2,955	3,090	3,565
Offer rate	Quintile 1	53.9%	52.0%	48.4%	52.3%	53.0%	57.8%
	Quintile 2	55.5%	51.9%	50.3%	49.9%	54.7%	58.8%
	Quintile 3	58.2%	52.6%	50.6%	53.1%	57.4%	58.9%
	Quintile 4	57.6%	56.7%	50.0%	50.5%	55.2%	58.7%
	Quintile 5	61.3%	56.2%	52.2%	54.9%	58.0%	61.1%

P.25 Scotland domiciled applicants (all ages) by SIMD 2016 quintile

Statistic	SIMD quintile	2013	2014	2015	2016	2017	2018
June deadline applicants	Quintile 1	2,450	2,960	3,170	3,195	3,310	3,420
	Quintile 2	2,225	2,360	2,595	2,625	2,550	2,790
	Quintile 3	2,035	2,080	2,410	2,315	2,285	2,480
	Quintile 4	1,835	1,895	2,215	2,260	2,140	2,365
	Quintile 5	1,805	1,850	2,285	2,230	2,175	2,365
Placed June deadline applicants	Quintile 1	740	840	880	885	995	1,105
	Quintile 2	695	630	665	690	755	855
	Quintile 3	590	540	595	585	690	750
	Quintile 4	530	430	565	510	575	645
	Quintile 5	505	450	480	490	540	640
All placed applicants	Quintile 1	880	925	1,050	1,040	1,160	1,195
	Quintile 2	810	705	790	820	870	930
	Quintile 3	720	600	730	690	815	845
	Quintile 4	640	500	700	610	685	710
	Quintile 5	625	530	635	600	645	705

P.26 Scotland domiciled applications (all ages) by SIMD 2016 quintile

Statistic	SIMD quintile	2013	2014	2015	2016	2017	2018
June deadline applications	Quintile 1	3,420	4,215	4,470	4,540	4,645	4,900
	Quintile 2	3,100	3,420	3,520	3,655	3,525	3,845
	Quintile 3	2,765	2,870	3,205	3,045	3,115	3,375
	Quintile 4	2,475	2,630	3,005	2,955	2,845	3,165
	Quintile 5	2,435	2,575	2,995	2,835	2,790	3,100
Offers	Quintile 1	1,935	2,260	2,315	2,400	2,630	2,910
	Quintile 2	1,835	1,815	1,785	1,915	1,960	2,245
	Quintile 3	1,625	1,590	1,645	1,590	1,745	2,040
	Quintile 4	1,465	1,485	1,540	1,520	1,645	1,880
	Quintile 5	1,505	1,500	1,550	1,600	1,600	1,920
Offer rate	Quintile 1	56.6%	53.6%	51.8%	52.8%	56.6%	59.4%
	Quintile 2	59.2%	53.1%	50.6%	52.4%	55.6%	58.4%
	Quintile 3	58.7%	55.3%	51.3%	52.2%	56.1%	60.4%
	Quintile 4	59.3%	56.5%	51.3%	51.5%	57.8%	59.4%
	Quintile 5	61.8%	58.3%	51.7%	56.4%	57.3%	62.0%

P.27 Applicants (all ages) by ethnic group

Statistic	Ethnic group	2013	2014	2015	2016	2017	2018
June deadline applicants	Asian	520	505	585	610	580	630
	Black	255	305	340	365	375	385
	Mixed	110	130	160	160	165	185
	White	9,960	10,690	12,095	11,915	11,730	12,500
	Other	45	45	70	55	55	90
Placed June deadline applicants	Asian	135	105	155	115	155	185
	Black	55	55	65	80	85	90
	Mixed	30	30	30	40	35	50
	White	2,850	2,720	2,950	2,920	3,285	3,675
	Other	15	10	25	15	15	25
All placed applicants	Asian	200	130	210	180	205	220
	Black	70	65	85	120	110	105
	Mixed	35	30	40	50	55	65
	White	3,390	3,015	3,605	3,425	3,825	3,985
	Other	15	10	30	20	20	35

P.28 Applications (all ages) by ethnic group

Statistic	Ethnic group	2013	2014	2015	2016	2017	2018
June deadline applications	Asian	695	690	785	795	740	840
	Black	325	385	435	495	500	505
	Mixed	140	175	195	210	210	245
	White	13,545	14,975	16,305	15,965	15,880	17,060
	Other	55	55	95	85	65	115
Offers	Asian	515	450	485	505	520	585
	Black	165	140	150	215	225	260
	Mixed	90	105	105	120	125	150
	White	7,815	8,135	8,235	8,315	8,855	10,090
	Other	35	30	55	50	50	80
Offer rate	Asian	74.0%	64.8%	62.0%	63.7%	70.5%	69.9%
	Black	50.5%	37.0%	34.8%	43.1%	44.8%	51.5%
	Mixed	65.0%	58.8%	54.6%	57.2%	59.1%	60.6%
	White	57.7%	54.3%	50.5%	52.1%	55.8%	59.1%
	Other	60.7%	50.9%	60.2%	58.3%	78.5%	67.2%

Technical Notes and Definitions

UCAS undergraduate scheme

Adjustment

Adjustment allows applicants who have met and exceeded the terms of their conditional firm offer to seek and find a place at another provider whilst keeping their place at their original firm choice provider.

Clearing

Clearing is a route for applicants that are not placed and holding no offers to find a place on courses with vacancies.

Cycle year

The UCAS application cycle which runs from September to October the following year. For example the 2018 cycle runs from September 2017 through to October 2018.

End of cycle

The point in the cycle to which the numbers in this report refer, and the point at which the cycle is closed such that no more applications or offers can be made, and no more applicants can be placed. Numbers reported at the end of cycle exclude information on a small number of applicants who cancelled during the cycle.

Extra

Applicants who are unsuccessful in obtaining an offer or decline all offers may be eligible to apply through Extra, where they can apply to one further course at a time. Extra operates from 25 February until early July. It provides applicants who are eligible the possibility of obtaining an offer before exam results are published and Clearing starts.

June 30 deadline

The deadline for main scheme applications. Applicants who apply after this date will go directly into Clearing.

Record of Prior Acceptance (RPA)

RPA is an acceptance route used when a provider informs UCAS of applicants it has accepted outside of the normal application process (e.g. individuals who have applied directly to the provider).

Reporting groups

Ethnic group

High level grouping of ethnic origin as declared by the applicant: 'White', 'Black', 'Asian', 'Mixed', 'Other', 'Unknown'. Applicants who declare themselves as 'Unknown' ethnic origin are not reported in these tables, but are included in the associated csv data file.

POLAR4 quintile

Developed by OfS, POLAR4 classifies small areas across the UK into five groups according to their level of young participation in Higher Education. Each of these groups represents around 20 per cent of young people and is ranked from Quintile 1 (areas with the lowest young participation rates, considered as the most disadvantaged) to Quintile 5 (highest young participation rates, considered most advantaged). POLAR4 is based on the participation rates of young people between 2009-10 and 2013-14 if they entered higher education aged 18, or between 2010-11 and 2014-15 if they entered aged 19, therefore is most suitable for applicants aged 19 and under. These groups are assigned using the postcode declared by the applicant at the time of their application. If a UK postcode is invalid, considered unsafe for measurement or there is no link to Census geography possible then the applicant is not assigned to a quintile. Applicants with no POLAR4 quintile are not reported.

Sex

Sex as declared by the applicant.

SIMD 2016 quintile

Scottish index of multiple deprivation (SIMD) identifies small area concentrations of multiple deprivation across all of Scotland, providing a relative measure of deprivation amongst 6505 small areas (data zones) based on 7 socio-economic domains. These small areas are classified into five groups ranked from Quintile 1 (considered the most deprived) to Quintile 5 (considered least deprived), with equal populations in each quintile. Quintiles are assigned using the postcode declared by the applicant, applicants declaring invalid postcodes are classified as 'Not assigned' and are not reported.

SIMD is only defined for applicants domiciled in Scotland, therefore any applicants domiciled outside of Scotland cannot be assigned to an SIMD quintile and so are not reported for this measure.

SIMD is only reported for providers in Scotland. Application and entry rates by SIMD are reported in the 2018 End of Cycle Report and the 2018 cycle January deadline application rate report.

Statistics reported in the tables

All placed applicants

The number of applicants placed for entry into higher education at the provider through one of their choices, including any choices made through Extra, or via Adjustment, Clearing or RPA.

All placed applicants per 10,000 population

The number of total UK domiciled 18 year old placed applicants for entry into higher education at the provider divided by the number of UK 18 year olds in the population, multiplied by 10,000. This gives the number of 18 year olds, for every 10,000 in the population, that were placed at the provider through one of their choices, including any choices made through Extra, or via Adjustment, Clearing or RPA. It is an alternative way of expressing the entry rate to a provider. By referencing the underlying population this statistic shows how the number of placed applicants is changing in relation to the available pool of potential applicants and so gives the chance that somebody from the group will be placed at a provider.

This statistic is only reported for 18 year olds.

Average offer rate

The offer rate that you might expect if the predicted grades and subject choice of applicants were the only factors that influenced whether an applicant was made an offer by the provider. The average offer rate is calculated by dividing applicants according to their specific combination of grades (for A levels the best three predicted grades are used, for BTECs, International Baccalaureate and Scottish Highers and Advanced Highers, predicted grades along with any grades already achieved upon applying are used) and subject choice. For each combination the number of main scheme offers is divided by the number of main scheme applications, to give an overall offer rate. This is then multiplied by the number of applications made by the group for which the average offer rate is being calculated (for example POLAR4 quintile 1), to give an average number of offers for that group. These average number of offers are then added together across all combinations of predicted grade and subject and divided by the number of main scheme applications from the group to give the average offer rate.

The average offer rate does not attempt to control for any other factors that may play a part in the decision to make an offer, such as the subject of the qualifications studied, their relevance to a course, or the grade in each subject; higher numbers of A levels being studied; the exact profile of grades predicted; personal statements; teacher references; interviews; or any other criteria (such as work experience or portfolios) that may be part of the admissions decision.

This statistic is only reported for 18 year olds.

Contribution of group to the average offer rate

The way in which the average offer rate is defined means that the pattern of application and offers of a group (for example POLAR4 quintile 1) will always contribute, in part, to the average offer rate for that group. When this contribution is large, the average offer rate will mainly reflect the patterns for the group, meaning that the value of the average offer rate will be similar to the offer rate, the percentage point difference statistic will be small, and any real difference between the offer rate and what might be expected given the predicted grades and subject choices of the applicants will be difficult to detect.

Values of the contribution of group to the average offer rate range between 0 and 1. The closer the value is to 1 the greater the contribution a group makes to its own average offer rate.

This statistic is only reported for 18 year olds.

Placed June deadline applicants

An applicant who has been placed for entry into higher education at the provider through a June deadline application.

Placed June deadline applicants per 10,000 population

The number of UK domiciled 18 year old placed June deadline applicants at the provider divided by the number of UK 18 year olds in the population, multiplied by 10,000. This gives the number of 18 year olds, for every 10,000 in the population, that were placed at the provider through one of their June deadline applications. It is an alternative way of expressing the entry rate to a provider, but for placed June deadline applicants only. By referencing the underlying population this statistic shows how the number of placed June deadline applicants is changing in relation to the available pool of potential 18 year old applicants and so gives the chance that somebody from the group will be placed at a provider through a June deadline application.

This statistic is only reported for 18 year olds.

June deadline applications

An application (or choice) to a course in higher education to the provider that is made by the June 30 deadline. Each applicant can make up to five choices this way. The number of June deadline applications does not include choices made through the following routes: Clearing, Extra, Adjustment and RPAs. Applications made to October deadline courses received after the October deadline are not included in these statistics.

June deadline applicants

The number of applicants that made at least one application to the provider by the June 30 deadline.

June deadline applicants per 10,000 population

The number of UK domiciled 18 year old June deadline applicants to the provider divided by the number of UK 18 year olds in the population, multiplied by 10,000. This gives the number of 18 year olds, for every 10,000 in the population, who applied by the June 30 deadline. It is equivalent to the application rate. By referencing the underlying population this statistic shows how the number of June deadline applicants is changing in relation to the available pool of potential 18 year old applicants and so gives the chance that somebody from the group will apply to a provider by the June 30 deadline.

This statistic is only reported for 18 year olds.

Offers

An offer is defined as a provider's decision in response to an application to offer a place to an applicant, often subject to the applicant satisfying academic and/or other criteria, via a June deadline application (i.e. does not cover choices made through the following routes: Clearing, Extra, Adjustment and RPAs).

Offer rate

The number of offers made divided by the number of June deadline applications. This gives the proportion of all June deadline applications to the provider that received an offer.

Percentage point difference between offer rate and average offer rate

The offer rate minus the average offer rate.

The percentage point difference can be compared to the expected range of statistical variation resulting from the calculation of the average offer rate using the Average Offer Rate Lookup Table. Where the value of the percentage point difference lies outside of this range, the percentage point difference may be considered to represent a real difference between the offer rate and the average offer rate.

Other definitions

Age

This analysis uses country-specific age definitions that align with the cut off points for school and college cohorts within the different administrations of the UK. For England and Wales, ages are defined on the 31 August, for Northern Ireland on the 1 July and for Scotland on the 28 February the following year. Defining ages in this way matches the assignment of children to school cohorts. For applicants outside of the UK a cohort cut off of 31 August has been used. Numbers for applicants aged 17 and under are included in the tables that report numbers for all age groups. Providers in Scotland typically receive a higher proportion of applicants aged 17 and under compared to providers elsewhere in the UK.

Provider

A higher education provider - a university or college.

UK domiciled

Declared area of permanent residence within England, Northern Ireland, Scotland and Wales. Applicants from the Channel Islands and Isle of Man are not included.