

# January Deadline Analysis: Sex and age

## Applicants by sex and age at the 15 January deadline

### D.2.1 Applicants by sex: All domiciles Difference between cycle and 2018 cycle

Men  
Women



Note: The percentage change is not plotted in the above chart for groups with fewer than 500 applicants in any one cycle.

## D.2.2 Applicants by sex: All domiciles

Men  
Women



### D.2.3 Applicants by age and sex: All domiciles

Age group and sex		2010	2011	2012	2013	2014	2015	2016	2017	2018	2019
Under 18	Women	4,440	4,480	4,510	4,760	5,470	5,610	5,940	6,150	6,940	6,800
	Men	2,970	3,100	3,300	3,630	3,970	4,240	4,400	4,470	5,060	5,040
18	Women	160,110	160,790	157,520	160,080	165,310	174,440	176,740	176,070	176,550	180,400
	Men	127,540	127,470	122,710	125,210	129,310	133,020	134,490	134,710	134,470	136,960
19	Women	61,220	65,890	56,650	62,460	65,030	65,910	66,710	61,830	60,660	61,000
	Men	51,820	55,500	47,000	52,080	53,000	53,960	54,050	49,910	47,840	46,660
20-24	Women	56,490	58,280	52,890	54,790	58,010	56,720	54,510	48,730	48,250	47,100
	Men	44,070	46,080	40,250	41,480	42,740	41,530	40,080	35,710	34,980	33,460
25-29	Women	17,160	17,330	15,560	15,970	16,790	17,140	16,920	13,830	12,810	12,680
	Men	9,280	9,220	7,850	8,110	8,230	8,230	7,950	6,690	6,480	6,270
30-34	Women	9,540	9,860	9,090	8,950	9,310	9,120	9,000	7,520	7,080	7,170
	Men	4,250	4,470	3,870	3,670	3,750	3,630	3,470	2,760	2,640	2,520
35 and over	Women	15,580	15,170	13,510	12,720	13,790	13,400	14,110	11,650	11,310	11,440
	Men	6,050	5,900	5,330	4,900	5,310	5,330	5,360	4,190	3,960	3,930
All ages	Women	324,540	331,800	309,720	319,740	333,700	342,350	343,930	325,770	323,590	326,580
	Men	245,970	251,730	230,300	239,080	246,300	249,940	249,790	238,430	235,430	234,840

## D.2.4 Applicants by age and sex: All domiciles

Difference between cycle and 2018 cycle

Age group and sex		2010	2011	2012	2013	2014	2015	2016	2017	2018	2019
Under 18	Women	-36%	-36%	-35%	-31%	-21%	-19%	-14%	-11%	0%	-2%
	Men	-41%	-39%	-35%	-28%	-22%	-16%	-13%	-12%	0%	-0%
18	Women	-9%	-9%	-11%	-9%	-6%	-1%	0%	-0%	0%	2%
	Men	-5%	-5%	-9%	-7%	-4%	-1%	0%	0%	0%	2%
19	Women	1%	9%	-7%	3%	7%	9%	10%	2%	0%	1%
	Men	8%	16%	-2%	9%	11%	13%	13%	4%	0%	-2%
20-24	Women	17%	21%	10%	14%	20%	18%	13%	1%	0%	-2%
	Men	26%	32%	15%	19%	22%	19%	15%	2%	0%	-4%
25-29	Women	34%	35%	21%	25%	31%	34%	32%	8%	0%	-1%
	Men	43%	42%	21%	25%	27%	27%	23%	3%	0%	-3%
30-34	Women	35%	39%	28%	26%	32%	29%	27%	6%	0%	1%
	Men	61%	69%	47%	39%	42%	38%	32%	5%	0%	-5%
35 and over	Women	38%	34%	19%	12%	22%	18%	25%	3%	0%	1%
	Men	53%	49%	35%	24%	34%	35%	35%	6%	0%	-1%
All ages	Women	0%	3%	-4%	-1%	3%	6%	6%	1%	0%	1%
	Men	4%	7%	-2%	2%	5%	6%	6%	1%	0%	-0%

Note: The percentage change is not recorded in the above table for groups with fewer than 10 applicants in that cycle or in the 2018 cycle.

### D.2.5 Applicants by sex: UK

Difference between cycle and 2018 cycle

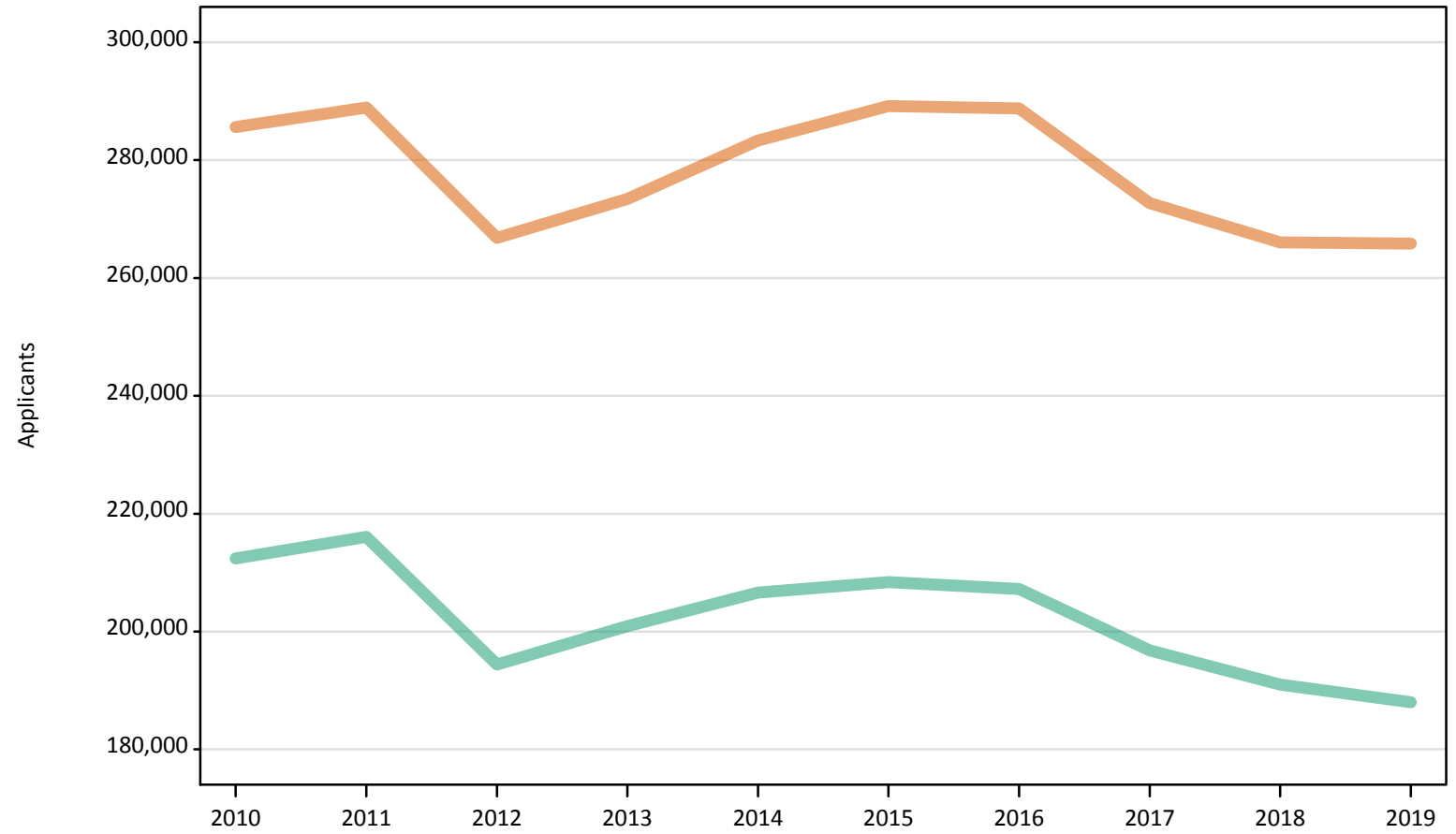
Men  
Women



Note: The percentage change is not plotted in the above chart for groups with fewer than 500 applicants in any one cycle.

## D.2.6 Applicants by sex: UK

Men  
Women



## D.2.7 Applicants by age and sex: UK

Age group and sex		2010	2011	2012	2013	2014	2015	2016	2017	2018	2019
Under 18	Women	1,380	1,230	1,000	870	920	950	920	890	880	890
	Men	850	820	700	650	650	700	760	700	700	640
18	Women	146,510	145,910	141,980	142,710	146,380	153,720	154,760	154,230	152,050	153,920
	Men	116,950	116,330	110,620	111,990	115,040	117,370	118,240	118,100	116,020	116,770
19	Women	50,370	53,500	44,230	49,230	50,700	51,000	51,270	46,980	45,120	44,360
	Men	42,600	45,210	37,000	41,580	42,280	42,710	42,270	38,460	36,040	33,870
20-24	Women	47,030	47,870	43,110	44,580	47,130	45,710	43,490	39,100	38,360	37,060
	Men	34,580	36,140	30,790	31,750	32,960	32,040	30,720	27,270	26,600	25,300
25-29	Women	15,880	15,980	14,460	14,830	15,650	15,840	15,740	12,780	11,770	11,590
	Men	7,860	7,870	6,700	6,980	7,200	7,170	6,880	5,790	5,540	5,420
30-34	Women	9,160	9,500	8,750	8,650	9,020	8,810	8,720	7,250	6,800	6,870
	Men	3,820	4,070	3,520	3,330	3,430	3,320	3,190	2,490	2,370	2,280
35 and over	Women	15,290	14,920	13,260	12,500	13,540	13,120	13,840	11,470	11,080	11,160
	Men	5,720	5,630	5,070	4,650	5,080	5,120	5,140	3,990	3,770	3,710
All ages	Women	285,610	288,910	266,790	273,380	283,310	289,140	288,730	272,690	266,050	265,850
	Men	212,380	216,070	194,390	200,930	206,630	208,410	207,200	196,800	191,030	188,000

**D.2.8 Applicants by age and sex: UK**  
Difference between cycle and 2018 cycle

Age group and sex		2010	2011	2012	2013	2014	2015	2016	2017	2018	2019
Under 18	Women	57%	40%	14%	-1%	4%	8%	4%	1%	0%	1%
	Men	22%	16%	-1%	-7%	-8%	-1%	8%	0%	0%	-9%
18	Women	-4%	-4%	-7%	-6%	-4%	1%	2%	1%	0%	1%
	Men	1%	0%	-5%	-3%	-1%	1%	2%	2%	0%	1%
19	Women	12%	19%	-2%	9%	12%	13%	14%	4%	0%	-2%
	Men	18%	25%	3%	15%	17%	19%	17%	7%	0%	-6%
20-24	Women	23%	25%	12%	16%	23%	19%	13%	2%	0%	-3%
	Men	30%	36%	16%	19%	24%	20%	16%	3%	0%	-5%
25-29	Women	35%	36%	23%	26%	33%	35%	34%	9%	0%	-1%
	Men	42%	42%	21%	26%	30%	29%	24%	5%	0%	-2%
30-34	Women	35%	40%	29%	27%	33%	30%	28%	7%	0%	1%
	Men	61%	72%	48%	41%	45%	40%	35%	5%	0%	-4%
35 and over	Women	38%	35%	20%	13%	22%	18%	25%	3%	0%	1%
	Men	52%	50%	35%	24%	35%	36%	37%	6%	0%	-1%
All ages	Women	7%	9%	0%	3%	6%	9%	9%	2%	0%	-0%
	Men	11%	13%	2%	5%	8%	9%	8%	3%	0%	-2%

Note: The percentage change is not recorded in the above table for groups with fewer than 10 applicants in that cycle or in the 2018 cycle.



### D.2.9 Applicants by sex: England Difference between cycle and 2018 cycle

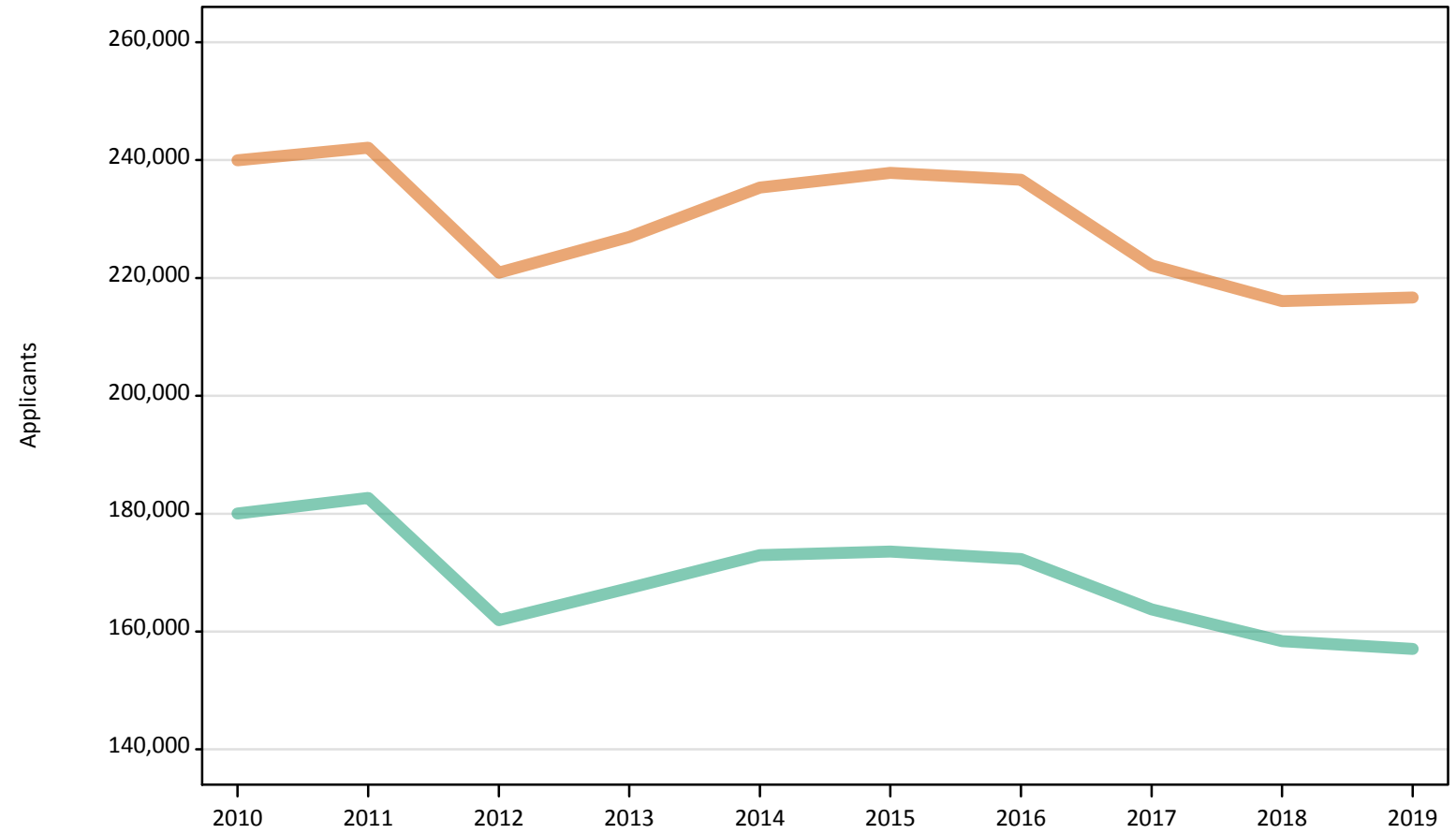
Men  
Women



Note: The percentage change is not plotted in the above chart for groups with fewer than 500 applicants in any one cycle.

## D.2.10 Applicants by sex: England

Men  
Women



## D.2.11 Applicants by age and sex: England

Age group and sex		2010	2011	2012	2013	2014	2015	2016	2017	2018	2019
Under 18	Women	740	640	480	440	490	470	450	440	420	420
	Men	470	440	370	360	380	430	440	370	370	320
18	Women	121,800	121,800	117,840	119,000	122,250	128,660	129,750	129,880	128,560	130,780
	Men	98,400	98,030	92,950	94,190	97,170	99,400	100,620	100,990	99,450	101,140
19	Women	44,300	46,690	37,610	42,490	43,830	44,110	43,830	39,970	38,150	37,440
	Men	37,950	40,050	32,000	36,470	37,070	37,360	36,640	33,330	30,990	29,210
20-24	Women	38,950	39,050	34,500	35,310	37,440	35,150	32,960	28,880	28,210	27,290
	Men	28,900	29,860	24,380	24,610	25,920	24,700	23,340	20,320	19,660	18,610
25-29	Women	13,220	13,150	11,770	11,960	12,490	11,950	11,790	8,990	8,060	7,990
	Men	6,300	6,150	5,190	5,340	5,510	5,160	4,850	4,000	3,630	3,620
30-34	Women	7,830	8,000	7,370	7,170	7,420	6,870	6,770	5,240	4,740	4,770
	Men	3,170	3,350	2,790	2,600	2,700	2,460	2,320	1,700	1,520	1,470
35 and over	Women	13,110	12,790	11,330	10,580	11,440	10,620	11,140	8,700	7,950	7,990
	Men	4,850	4,800	4,270	3,830	4,210	4,070	4,110	3,060	2,750	2,690
All ages	Women	239,950	242,120	220,890	226,950	235,350	237,840	236,680	222,100	216,080	216,680
	Men	180,040	182,680	161,950	167,380	172,950	173,580	172,310	163,770	158,360	157,060

**D.2.12 Applicants by age and sex: England**  
 Difference between cycle and 2018 cycle

Age group and sex		2010	2011	2012	2013	2014	2015	2016	2017	2018	2019
Under 18	Women	74%	52%	13%	5%	15%	11%	5%	4%	0%	-1%
	Men	27%	17%	-1%	-5%	1%	15%	18%	0%	0%	-14%
18	Women	-5%	-5%	-8%	-7%	-5%	0%	1%	1%	0%	2%
	Men	-1%	-1%	-7%	-5%	-2%	-0%	1%	2%	0%	2%
19	Women	16%	22%	-1%	11%	15%	16%	15%	5%	0%	-2%
	Men	22%	29%	3%	18%	20%	21%	18%	8%	0%	-6%
20-24	Women	38%	38%	22%	25%	33%	25%	17%	2%	0%	-3%
	Men	47%	52%	24%	25%	32%	26%	19%	3%	0%	-5%
25-29	Women	64%	63%	46%	48%	55%	48%	46%	12%	0%	-1%
	Men	74%	70%	43%	47%	52%	42%	34%	10%	0%	-0%
30-34	Women	65%	69%	55%	51%	56%	45%	43%	10%	0%	0%
	Men	108%	120%	83%	70%	77%	62%	52%	11%	0%	-4%
35 and over	Women	65%	61%	43%	33%	44%	34%	40%	10%	0%	1%
	Men	76%	75%	55%	39%	53%	48%	49%	11%	0%	-2%
All ages	Women	11%	12%	2%	5%	9%	10%	10%	3%	0%	0%
	Men	14%	15%	2%	6%	9%	10%	9%	3%	0%	-1%

Note: The percentage change is not recorded in the above table for groups with fewer than 10 applicants in that cycle or in the 2018 cycle.

### D.2.13 Applicants by sex: Northern Ireland

Difference between cycle and 2018 cycle

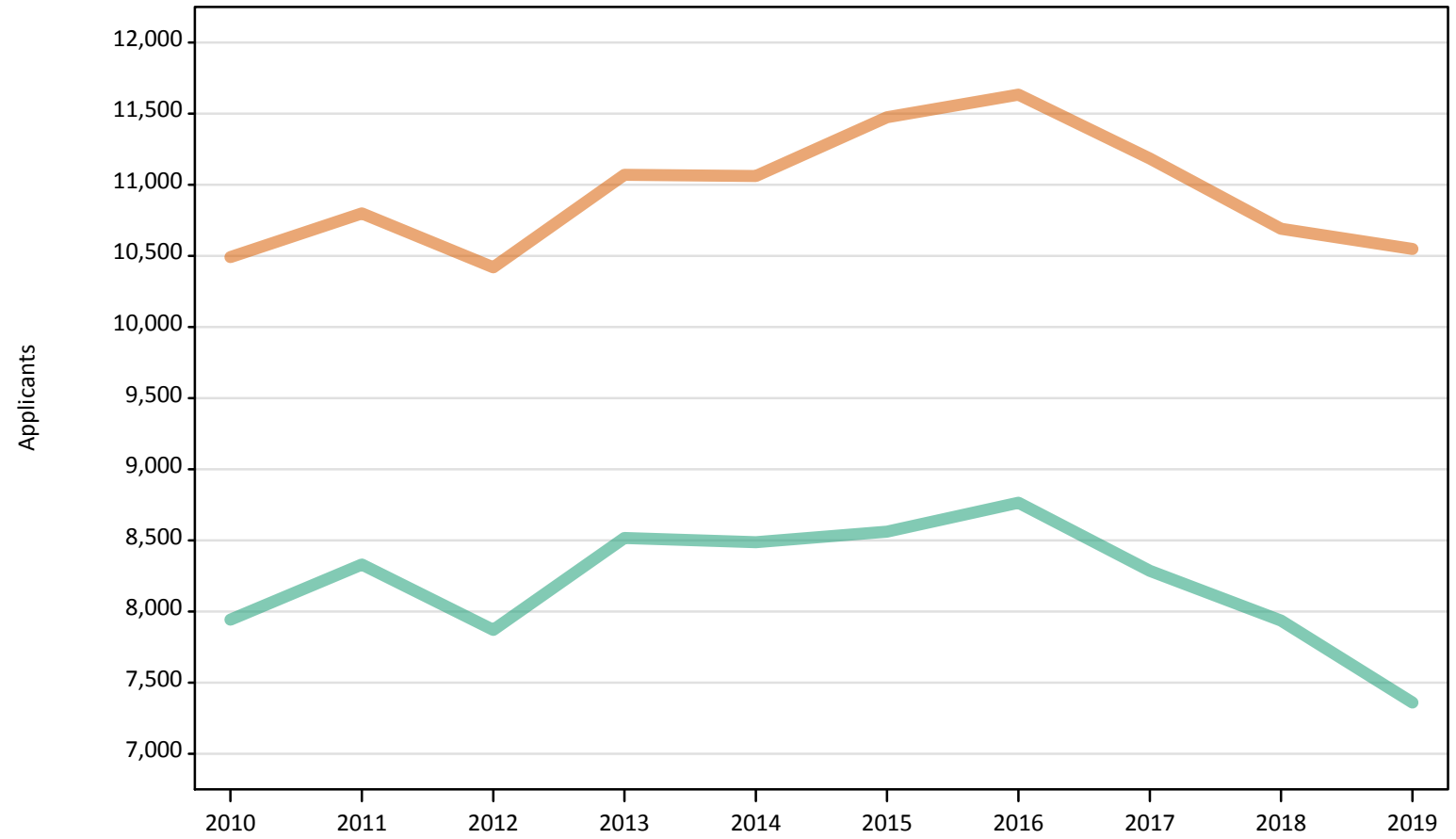
Men  
Women



Note: The percentage change is not plotted in the above chart for groups with fewer than 500 applicants in any one cycle.

## D.2.14 Applicants by sex: Northern Ireland

Men  
Women



## D.2.15 Applicants by age and sex: Northern Ireland

Age group and sex		2010	2011	2012	2013	2014	2015	2016	2017	2018	2019
Under 18	Women	30	30	30	20	20	20	30	10	20	20
	Men	20	20	20	20	10	10	10	10	10	20
18	Women	6,830	6,710	6,680	6,520	6,390	6,820	6,690	6,580	6,220	6,050
	Men	5,190	5,180	4,970	5,150	5,070	5,110	5,070	4,920	4,800	4,430
19	Women	1,290	1,610	1,420	1,610	1,620	1,610	1,910	1,820	1,670	1,740
	Men	1,060	1,290	1,130	1,260	1,340	1,390	1,530	1,360	1,310	1,170
20-24	Women	1,510	1,610	1,550	1,860	1,950	1,930	1,890	1,780	1,790	1,720
	Men	1,230	1,360	1,340	1,620	1,620	1,550	1,630	1,620	1,450	1,430
25-29	Women	420	440	380	530	550	540	530	450	450	410
	Men	250	290	230	280	240	270	300	210	210	170
30-34	Women	160	170	160	250	250	260	280	250	230	270
	Men	90	90	90	100	100	120	110	90	80	80
35 and over	Women	250	240	190	290	290	290	310	290	300	340
	Men	100	100	100	110	110	110	120	80	90	70
All ages	Women	10,490	10,800	10,420	11,070	11,060	11,470	11,630	11,180	10,690	10,550
	Men	7,940	8,330	7,870	8,520	8,490	8,560	8,770	8,290	7,940	7,360

## D.2.16 Applicants by age and sex: Northern Ireland

Difference between cycle and 2018 cycle

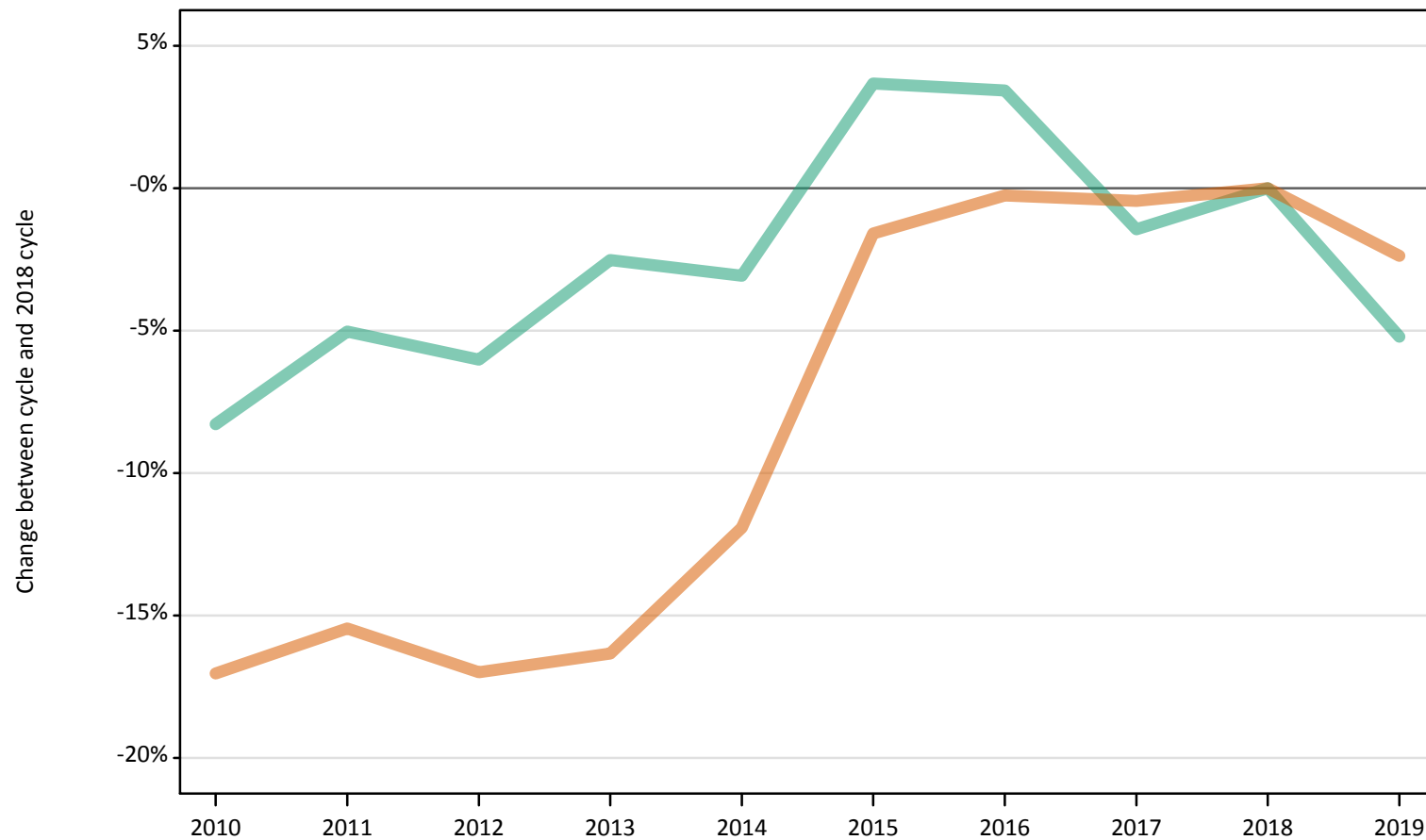
Age group and sex		2010	2011	2012	2013	2014	2015	2016	2017	2018	2019
Under 18	Women	83%	39%	89%	0%	-6%	28%	44%	-33%	0%	-6%
	Men	82%	109%	45%	45%	-9%	9%	27%	18%	0%	64%
18	Women	10%	8%	7%	5%	3%	10%	8%	6%	0%	-3%
	Men	8%	8%	4%	7%	6%	7%	6%	3%	0%	-8%
19	Women	-23%	-4%	-15%	-4%	-4%	-4%	14%	8%	0%	4%
	Men	-19%	-2%	-14%	-4%	2%	6%	17%	4%	0%	-11%
20-24	Women	-16%	-10%	-13%	4%	9%	7%	6%	-1%	0%	-4%
	Men	-15%	-6%	-8%	12%	12%	7%	13%	12%	0%	-1%
25-29	Women	-7%	-3%	-17%	17%	22%	19%	18%	0%	0%	-8%
	Men	21%	43%	14%	35%	19%	32%	44%	0%	0%	-17%
30-34	Women	-32%	-28%	-30%	7%	9%	12%	19%	9%	0%	18%
	Men	13%	14%	18%	20%	19%	54%	41%	11%	0%	-6%
35 and over	Women	-16%	-21%	-36%	-5%	-4%	-4%	2%	-3%	0%	12%
	Men	10%	13%	11%	19%	23%	26%	32%	-8%	0%	-18%
All ages	Women	-2%	1%	-3%	4%	3%	7%	9%	5%	0%	-1%
	Men	0%	5%	-1%	7%	7%	8%	10%	4%	0%	-7%

Note: The percentage change is not recorded in the above table for groups with fewer than 10 applicants in that cycle or in the 2018 cycle.



**D.2.17 Applicants by sex: Scotland**  
Difference between cycle and 2018 cycle

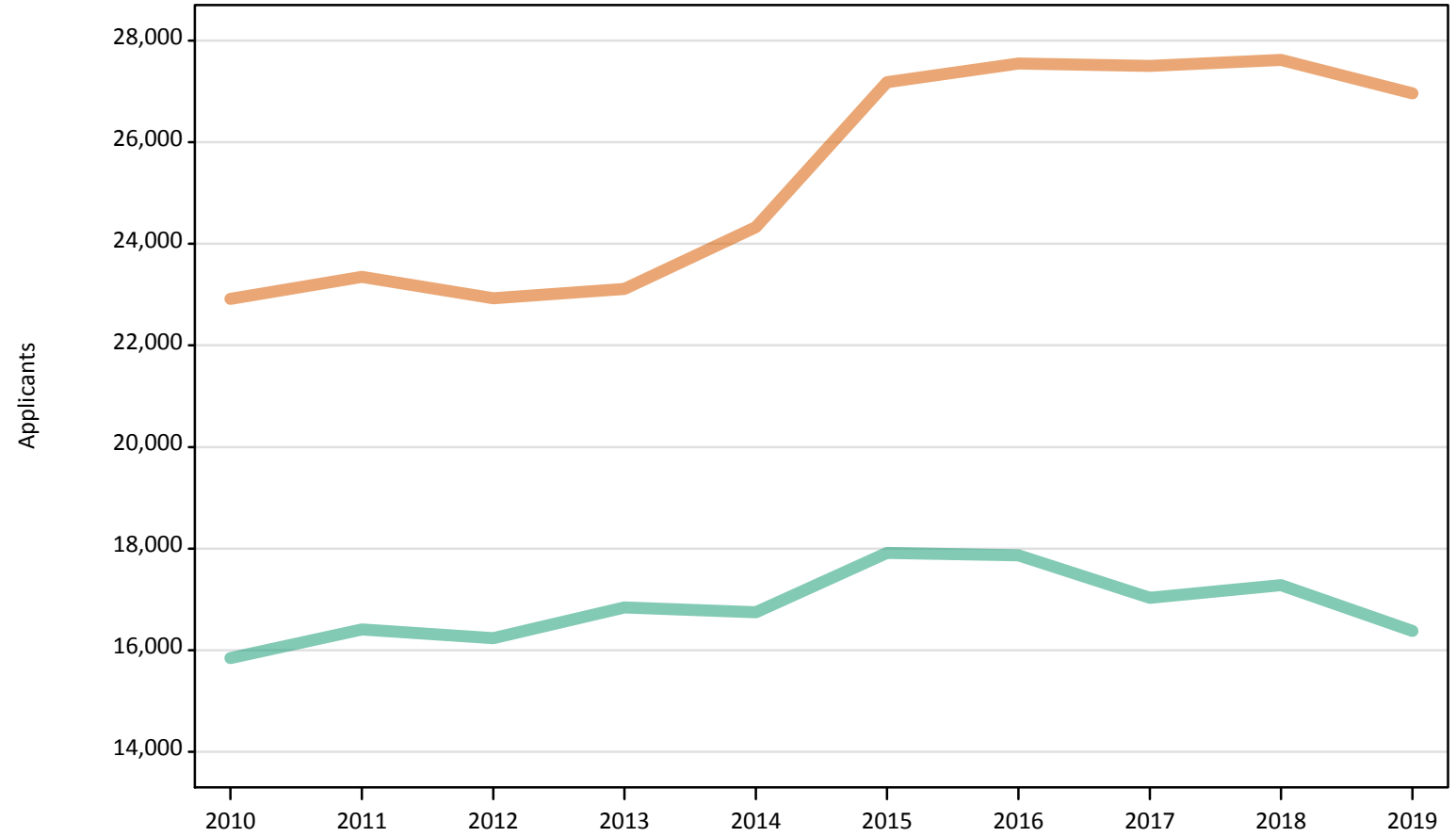
Men  
Women



Note: The percentage change is not plotted in the above chart for groups with fewer than 500 applicants in any one cycle.

## D.2.18 Applicants by sex: Scotland

Men  
Women



## D.2.19 Applicants by age and sex: Scotland

Age group and sex		2010	2011	2012	2013	2014	2015	2016	2017	2018	2019
Under 18	Women	580	530	480	390	400	440	430	430	430	430
	Men	340	340	300	270	250	250	290	310	300	300
18	Women	11,210	10,920	10,940	10,870	11,270	11,400	11,420	11,240	10,860	10,750
	Men	8,350	8,240	8,010	8,060	7,990	8,050	7,770	7,480	7,200	6,720
19	Women	2,850	3,060	3,110	3,040	3,060	3,170	3,340	3,230	3,340	3,200
	Men	2,050	2,160	2,230	2,210	2,210	2,280	2,370	2,290	2,350	2,170
20-24	Women	4,630	5,090	4,960	5,370	5,660	6,630	6,600	6,620	6,690	6,330
	Men	3,140	3,560	3,690	4,200	4,080	4,490	4,580	4,250	4,460	4,290
25-29	Women	1,510	1,580	1,540	1,540	1,760	2,570	2,650	2,620	2,590	2,540
	Men	1,000	1,090	1,000	1,050	1,130	1,430	1,460	1,380	1,480	1,420
30-34	Women	780	900	780	810	900	1,270	1,270	1,370	1,420	1,430
	Men	420	490	480	510	510	620	640	610	680	660
35 and over	Women	1,360	1,270	1,130	1,090	1,270	1,700	1,840	1,990	2,300	2,290
	Men	550	540	550	550	590	790	770	710	810	820
All ages	Women	22,920	23,350	22,930	23,110	24,330	27,180	27,550	27,500	27,620	26,960
	Men	15,850	16,410	16,240	16,850	16,750	17,920	17,870	17,030	17,280	16,380

**D.2.20 Applicants by age and sex: Scotland**  
Difference between cycle and 2018 cycle

Age group and sex		2010	2011	2012	2013	2014	2015	2016	2017	2018	2019
Under 18	Women	37%	25%	13%	-9%	-6%	4%	2%	1%	0%	2%
	Men	13%	12%	-2%	-12%	-19%	-17%	-5%	2%	0%	-3%
18	Women	3%	1%	1%	0%	4%	5%	5%	3%	0%	-1%
	Men	16%	15%	11%	12%	11%	12%	8%	4%	0%	-7%
19	Women	-15%	-8%	-7%	-9%	-8%	-5%	-0%	-3%	0%	-4%
	Men	-13%	-8%	-5%	-6%	-6%	-3%	1%	-3%	0%	-8%
20-24	Women	-31%	-24%	-26%	-20%	-15%	-1%	-1%	-1%	0%	-5%
	Men	-30%	-20%	-17%	-6%	-8%	1%	3%	-5%	0%	-4%
25-29	Women	-42%	-39%	-41%	-41%	-32%	-1%	2%	1%	0%	-2%
	Men	-32%	-26%	-33%	-29%	-23%	-3%	-1%	-7%	0%	-4%
30-34	Women	-45%	-36%	-45%	-43%	-36%	-11%	-11%	-4%	0%	0%
	Men	-38%	-28%	-29%	-24%	-25%	-8%	-6%	-9%	0%	-3%
35 and over	Women	-41%	-45%	-51%	-52%	-45%	-26%	-20%	-13%	0%	-0%
	Men	-32%	-34%	-33%	-32%	-28%	-3%	-5%	-13%	0%	1%
All ages	Women	-17%	-15%	-17%	-16%	-12%	-2%	-0%	-0%	0%	-2%
	Men	-8%	-5%	-6%	-3%	-3%	4%	3%	-1%	0%	-5%

Note: The percentage change is not recorded in the above table for groups with fewer than 10 applicants in that cycle or in the 2018 cycle.

**D.2.21 Applicants by sex: Wales**  
Difference between cycle and 2018 cycle

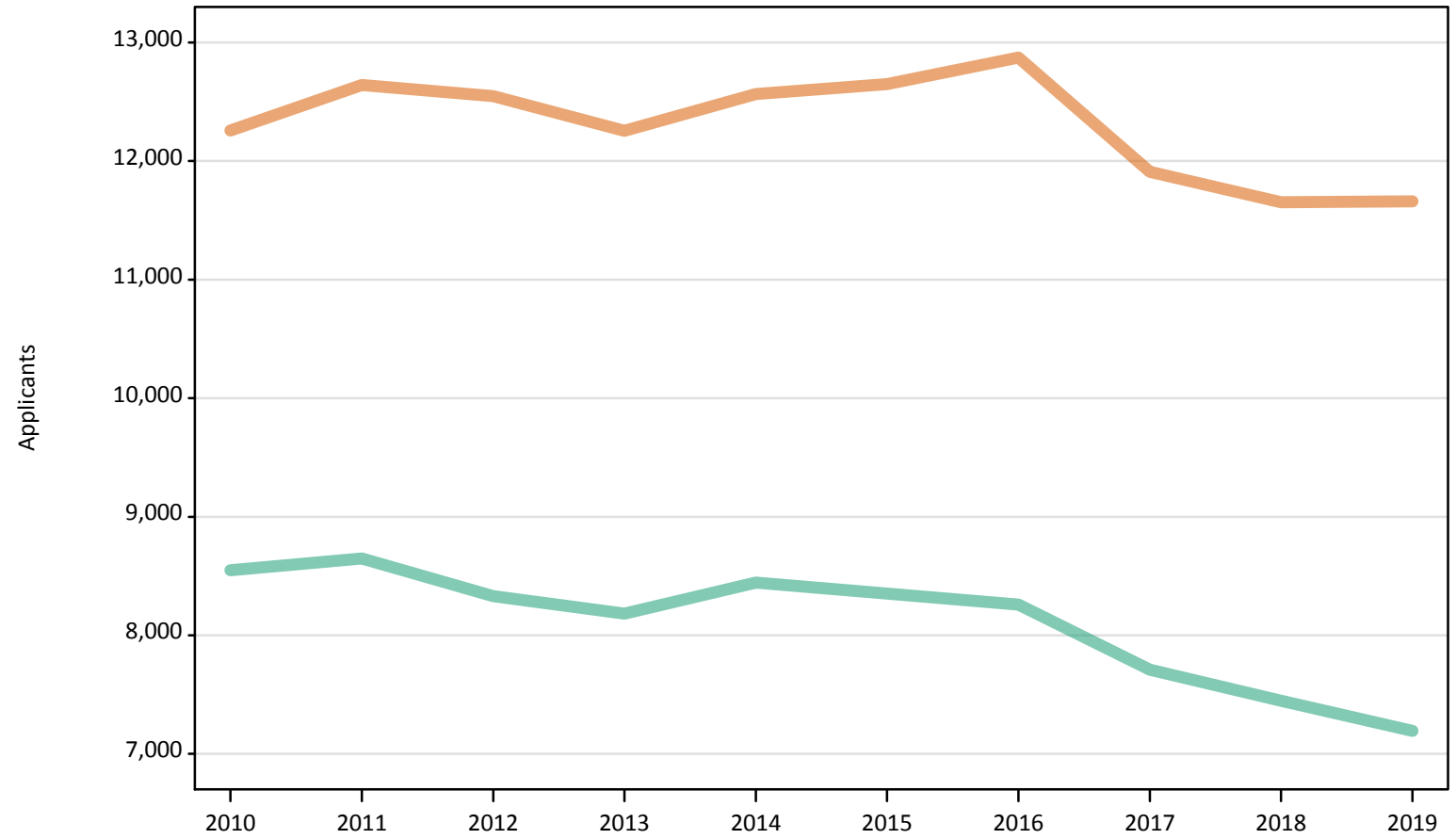
Men  
Women



Note: The percentage change is not plotted in the above chart for groups with fewer than 500 applicants in any one cycle.

## D.2.22 Applicants by sex: Wales

Men  
Women



### D.2.23 Applicants by age and sex: Wales

Age group and sex		2010	2011	2012	2013	2014	2015	2016	2017	2018	2019
Under 18	Women	30	30	10	20	20	20	10	10	10	20
	Men	20	20	20	10	10	0	20	0	10	10
18	Women	6,670	6,490	6,510	6,320	6,470	6,840	6,900	6,530	6,420	6,350
	Men	5,010	4,880	4,700	4,590	4,820	4,810	4,790	4,710	4,580	4,470
19	Women	1,940	2,150	2,100	2,100	2,180	2,110	2,200	1,970	1,950	1,980
	Men	1,540	1,700	1,650	1,640	1,670	1,680	1,730	1,470	1,390	1,330
20-24	Women	1,940	2,120	2,100	2,050	2,080	1,990	2,030	1,820	1,670	1,720
	Men	1,320	1,370	1,390	1,330	1,330	1,290	1,180	1,080	1,040	970
25-29	Women	730	820	770	810	850	780	760	720	670	650
	Men	310	340	280	310	320	310	280	210	230	220
30-34	Women	390	430	450	420	440	410	410	390	400	410
	Men	140	140	150	130	130	110	120	100	90	80
35 and over	Women	560	610	600	540	530	510	550	480	540	540
	Men	210	200	150	170	170	160	150	140	120	130
All ages	Women	12,260	12,640	12,550	12,250	12,570	12,650	12,870	11,910	11,650	11,660
	Men	8,550	8,650	8,330	8,180	8,450	8,350	8,260	7,710	7,450	7,200

**D.2.24 Applicants by age and sex: Wales**  
Difference between cycle and 2018 cycle

Age group and sex		2010	2011	2012	2013	2014	2015	2016	2017	2018	2019
Under 18	Women	107%	107%	-21%	71%	7%	29%	0%	-29%	0%	21%
	Men	38%	23%	15%	-8%	-8%		23%		0%	-62%
18	Women	4%	1%	1%	-2%	1%	7%	8%	2%	0%	-1%
	Men	9%	7%	3%	0%	5%	5%	5%	3%	0%	-2%
19	Women	-1%	10%	7%	7%	12%	8%	13%	1%	0%	1%
	Men	11%	23%	19%	18%	20%	21%	25%	6%	0%	-4%
20-24	Women	16%	27%	26%	23%	25%	20%	22%	9%	0%	3%
	Men	27%	32%	34%	28%	29%	25%	14%	5%	0%	-7%
25-29	Women	10%	23%	16%	21%	27%	17%	14%	8%	0%	-3%
	Men	37%	46%	24%	37%	39%	33%	21%	-10%	0%	-6%
30-34	Women	-3%	7%	12%	5%	11%	2%	3%	-3%	0%	2%
	Men	57%	62%	70%	44%	44%	21%	35%	9%	0%	-9%
35 and over	Women	5%	14%	13%	1%	-1%	-5%	2%	-11%	0%	1%
	Men	84%	72%	31%	44%	49%	34%	28%	16%	0%	9%
All ages	Women	5%	8%	8%	5%	8%	9%	10%	2%	0%	0%
	Men	15%	16%	12%	10%	13%	12%	11%	4%	0%	-3%

Note: The percentage change is not recorded in the above table for groups with fewer than 10 applicants in that cycle or in the 2018 cycle.



**D.2.25 Applicants by sex: EU (excluding UK)**  
Difference between cycle and 2018 cycle

Men  
Women



Note: The percentage change is not plotted in the above chart for groups with fewer than 500 applicants in any one cycle.

## D.2.26 Applicants by sex: EU (excluding UK)

Men  
Women



## D.2.27 Applicants by age and sex: EU (excluding UK)

Age group and sex		2010	2011	2012	2013	2014	2015	2016	2017	2018	2019
Under 18	Women	1,710	1,780	1,740	1,800	2,040	2,270	2,290	2,340	2,450	2,520
	Men	960	1,060	1,000	1,140	1,190	1,430	1,490	1,470	1,570	1,600
18	Women	7,180	7,790	7,390	7,810	8,400	9,340	10,220	9,580	10,080	10,320
	Men	4,780	5,000	5,000	5,180	5,580	6,230	6,600	6,530	6,710	6,820
19	Women	5,870	6,960	6,290	6,720	7,180	7,590	8,260	7,650	7,970	8,160
	Men	4,500	5,480	4,690	4,950	4,870	5,240	5,590	5,270	5,410	5,480
20-24	Women	5,030	5,790	4,650	4,930	5,050	5,210	5,380	4,580	4,790	4,790
	Men	4,590	4,990	3,930	3,960	4,050	3,860	3,870	3,490	3,300	3,170
25-29	Women	670	730	550	590	570	620	620	490	470	410
	Men	660	640	450	440	410	470	470	330	400	300
30-34	Women	170	170	160	140	130	140	100	100	100	90
	Men	170	170	140	140	100	110	90	90	100	70
35 and over	Women	130	110	110	90	120	120	130	70	80	100
	Men	120	120	100	120	90	80	100	90	90	60
All ages	Women	20,760	23,340	20,900	22,070	23,490	25,300	27,010	24,810	25,930	26,400
	Men	15,780	17,460	15,310	15,920	16,290	17,420	18,210	17,260	17,580	17,490

## D.2.28 Applicants by age and sex: EU (excluding UK)

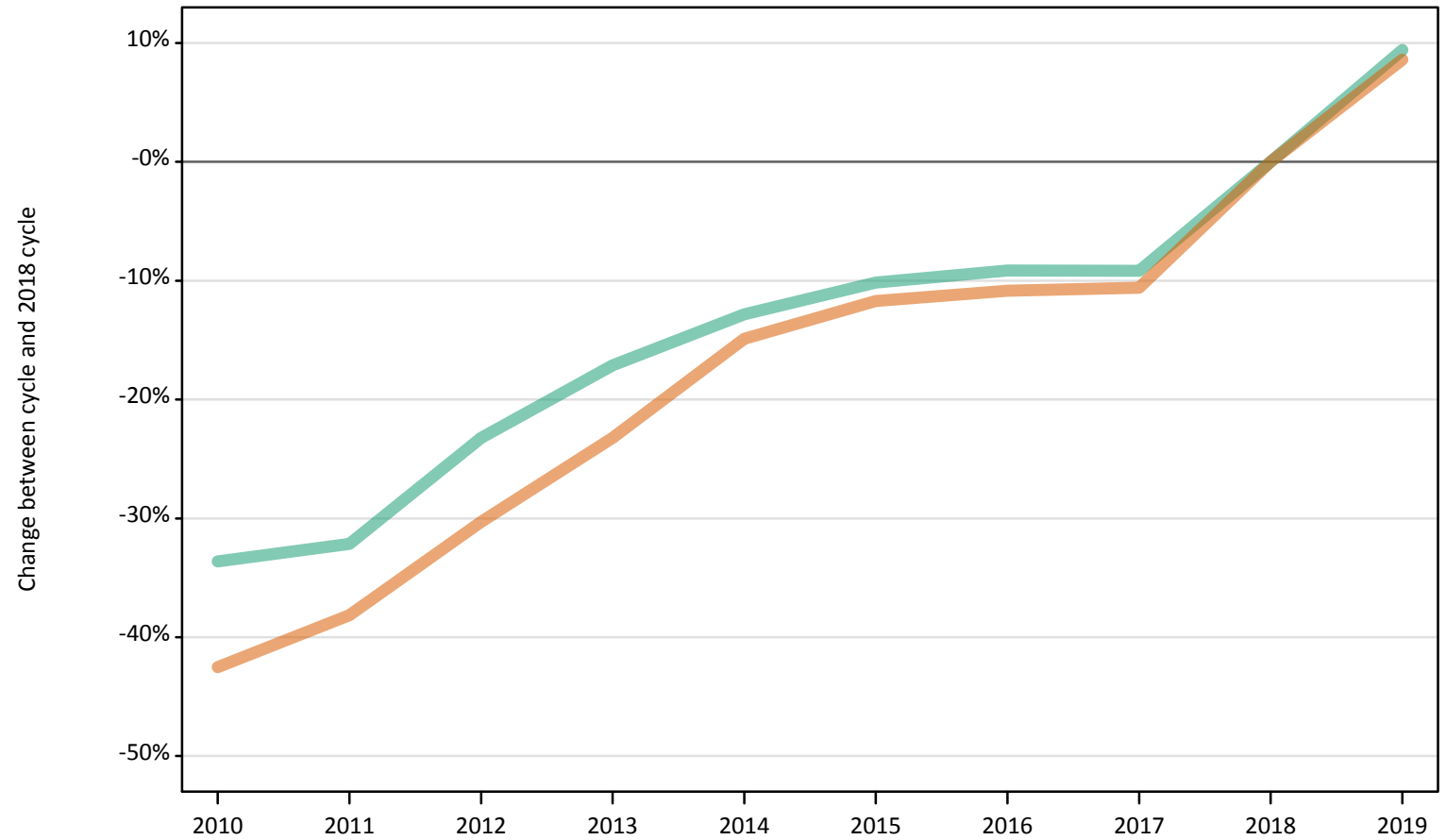
Difference between cycle and 2018 cycle

Age group and sex		2010	2011	2012	2013	2014	2015	2016	2017	2018	2019
Under 18	Women	-30%	-27%	-29%	-27%	-17%	-7%	-7%	-5%	0%	3%
	Men	-39%	-32%	-36%	-28%	-24%	-9%	-5%	-7%	0%	2%
18	Women	-29%	-23%	-27%	-22%	-17%	-7%	1%	-5%	0%	2%
	Men	-29%	-26%	-26%	-23%	-17%	-7%	-2%	-3%	0%	2%
19	Women	-26%	-13%	-21%	-16%	-10%	-5%	4%	-4%	0%	2%
	Men	-17%	1%	-13%	-8%	-10%	-3%	3%	-2%	0%	1%
20-24	Women	5%	21%	-3%	3%	6%	9%	12%	-4%	0%	0%
	Men	39%	51%	19%	20%	23%	17%	17%	6%	0%	-4%
25-29	Women	44%	56%	18%	26%	23%	34%	34%	5%	0%	-11%
	Men	65%	61%	13%	10%	3%	18%	18%	-18%	0%	-25%
30-34	Women	60%	67%	49%	30%	22%	38%	-1%	-1%	0%	-10%
	Men	63%	67%	35%	32%	1%	7%	-9%	-12%	0%	-37%
35 and over	Women	63%	35%	44%	18%	57%	53%	62%	-10%	0%	29%
	Men	40%	35%	22%	39%	11%	-7%	15%	0%	0%	-27%
All ages	Women	-20%	-10%	-19%	-15%	-9%	-2%	4%	-4%	0%	2%
	Men	-10%	-1%	-13%	-9%	-7%	-1%	4%	-2%	0%	-0%

Note: The percentage change is not recorded in the above table for groups with fewer than 10 applicants in that cycle or in the 2018 cycle.

**D.2.29 Applicants by sex: Not EU**  
Difference between cycle and 2018 cycle

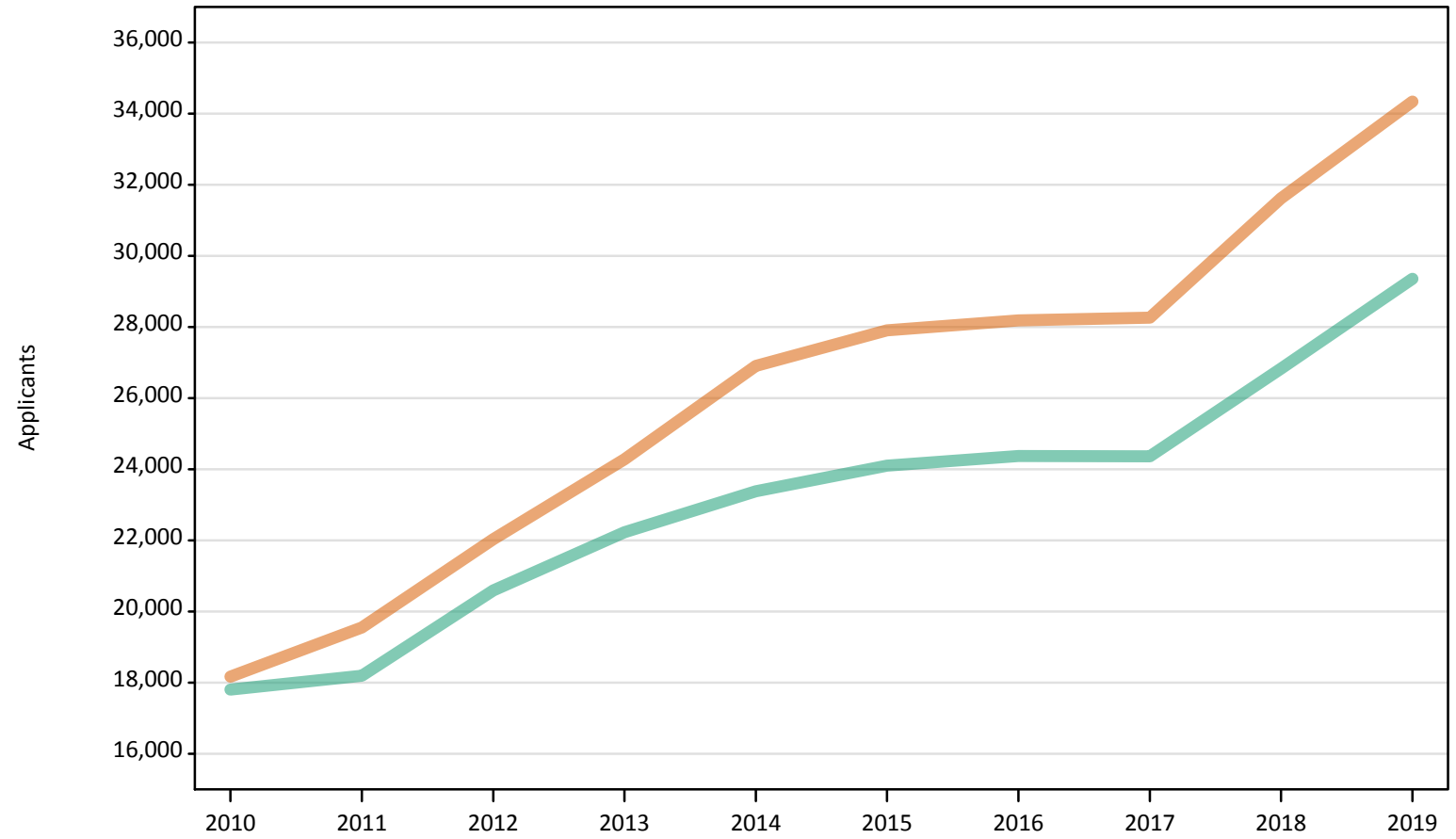
Men  
Women



Note: The percentage change is not plotted in the above chart for groups with fewer than 500 applicants in any one cycle.

## D.2.30 Applicants by sex: Not EU

Men  
Women



### D.2.31 Applicants by age and sex: Not EU

Age group and sex		2010	2011	2012	2013	2014	2015	2016	2017	2018	2019
Under 18	Women	1,360	1,460	1,760	2,090	2,520	2,390	2,740	2,920	3,610	3,400
	Men	1,160	1,220	1,600	1,840	2,130	2,110	2,150	2,300	2,790	2,800
18	Women	6,420	7,090	8,160	9,560	10,530	11,380	11,760	12,250	14,420	16,160
	Men	5,810	6,150	7,090	8,040	8,690	9,420	9,650	10,080	11,730	13,370
19	Women	4,980	5,430	6,130	6,510	7,160	7,320	7,180	7,200	7,570	8,480
	Men	4,720	4,820	5,320	5,550	5,860	6,010	6,190	6,180	6,400	7,310
20-24	Women	4,430	4,620	5,130	5,280	5,830	5,800	5,640	5,060	5,110	5,250
	Men	4,900	4,940	5,530	5,780	5,730	5,640	5,490	4,950	5,090	4,990
25-29	Women	610	620	550	550	570	690	560	570	580	680
	Men	760	710	700	690	620	590	590	570	550	550
30-34	Women	220	190	180	170	170	170	180	170	180	200
	Men	260	230	210	200	210	200	190	170	170	170
35 and over	Women	160	150	130	120	130	150	140	110	150	180
	Men	210	150	160	130	140	130	120	120	110	160
All ages	Women	18,170	19,560	22,040	24,280	26,910	27,910	28,180	28,270	31,620	34,340
	Men	17,810	18,200	20,600	22,240	23,380	24,100	24,380	24,370	26,830	29,360

## D.2.32 Applicants by age and sex: Not EU

Difference between cycle and 2018 cycle

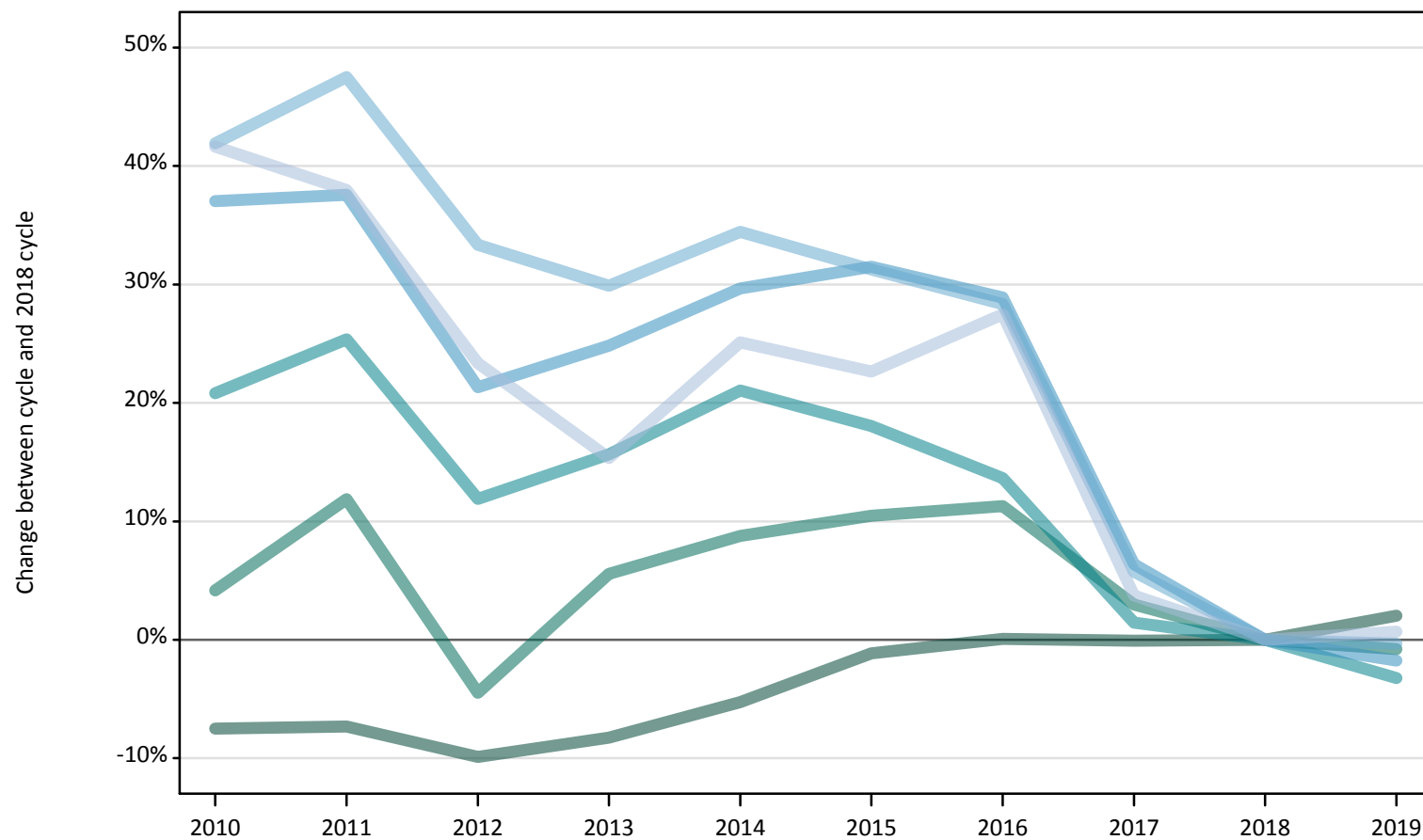
Age group and sex		2010	2011	2012	2013	2014	2015	2016	2017	2018	2019
Under 18	Women	-62%	-60%	-51%	-42%	-30%	-34%	-24%	-19%	0%	-6%
	Men	-58%	-56%	-42%	-34%	-24%	-24%	-23%	-18%	0%	1%
18	Women	-55%	-51%	-43%	-34%	-27%	-21%	-18%	-15%	0%	12%
	Men	-50%	-48%	-40%	-31%	-26%	-20%	-18%	-14%	0%	14%
19	Women	-34%	-28%	-19%	-14%	-5%	-3%	-5%	-5%	0%	12%
	Men	-26%	-25%	-17%	-13%	-9%	-6%	-3%	-3%	0%	14%
20-24	Women	-13%	-10%	0%	3%	14%	13%	10%	-1%	0%	3%
	Men	-4%	-3%	9%	14%	13%	11%	8%	-3%	0%	-2%
25-29	Women	5%	7%	-5%	-5%	-1%	19%	-3%	-2%	0%	17%
	Men	39%	29%	27%	27%	14%	8%	9%	4%	0%	1%
30-34	Women	20%	7%	1%	-7%	-6%	-3%	-2%	-6%	0%	12%
	Men	58%	36%	27%	21%	29%	23%	16%	4%	0%	2%
35 and over	Women	9%	-1%	-11%	-21%	-12%	3%	-7%	-23%	0%	22%
	Men	92%	33%	41%	16%	29%	22%	5%	7%	0%	44%
All ages	Women	-43%	-38%	-30%	-23%	-15%	-12%	-11%	-11%	0%	9%
	Men	-34%	-32%	-23%	-17%	-13%	-10%	-9%	-9%	0%	9%

Note: The percentage change is not recorded in the above table for groups with fewer than 10 applicants in that cycle or in the 2018 cycle.



**D.2.33 Applicants by age: All domiciles**  
Difference between cycle and 2018 cycle

- 18
- 19
- 20-24
- 25-29
- 30-34
- 35 and over



Note: The percentage change is not plotted in the above chart for groups with fewer than 500 applicants in any one cycle.

### D.2.34 Applicants by age: All domiciles

Domicile and age group		2010	2011	2012	2013	2014	2015	2016	2017	2018	2019
All domiciles	Under 18	7,410	7,570	7,810	8,390	9,440	9,850	10,340	10,610	12,000	11,840
	18	287,660	288,260	280,230	285,290	294,610	307,460	311,230	310,770	311,010	317,360
	19	113,030	121,390	103,650	114,540	118,030	119,870	120,750	111,740	108,500	107,650
	20-24	100,560	104,360	93,140	96,280	100,740	98,250	94,590	84,440	83,240	80,560
	25-29	26,440	26,540	23,410	24,080	25,020	25,370	24,870	20,520	19,290	18,950
	30-34	13,790	14,330	12,960	12,620	13,060	12,750	12,470	10,270	9,720	9,680
	35 and over	21,620	21,070	18,840	17,610	19,100	18,730	19,470	15,840	15,270	15,370
	All ages	570,510	583,530	540,020	558,820	580,000	592,290	593,720	564,190	559,030	561,420

### D.2.35 Applicants by age: All domiciles

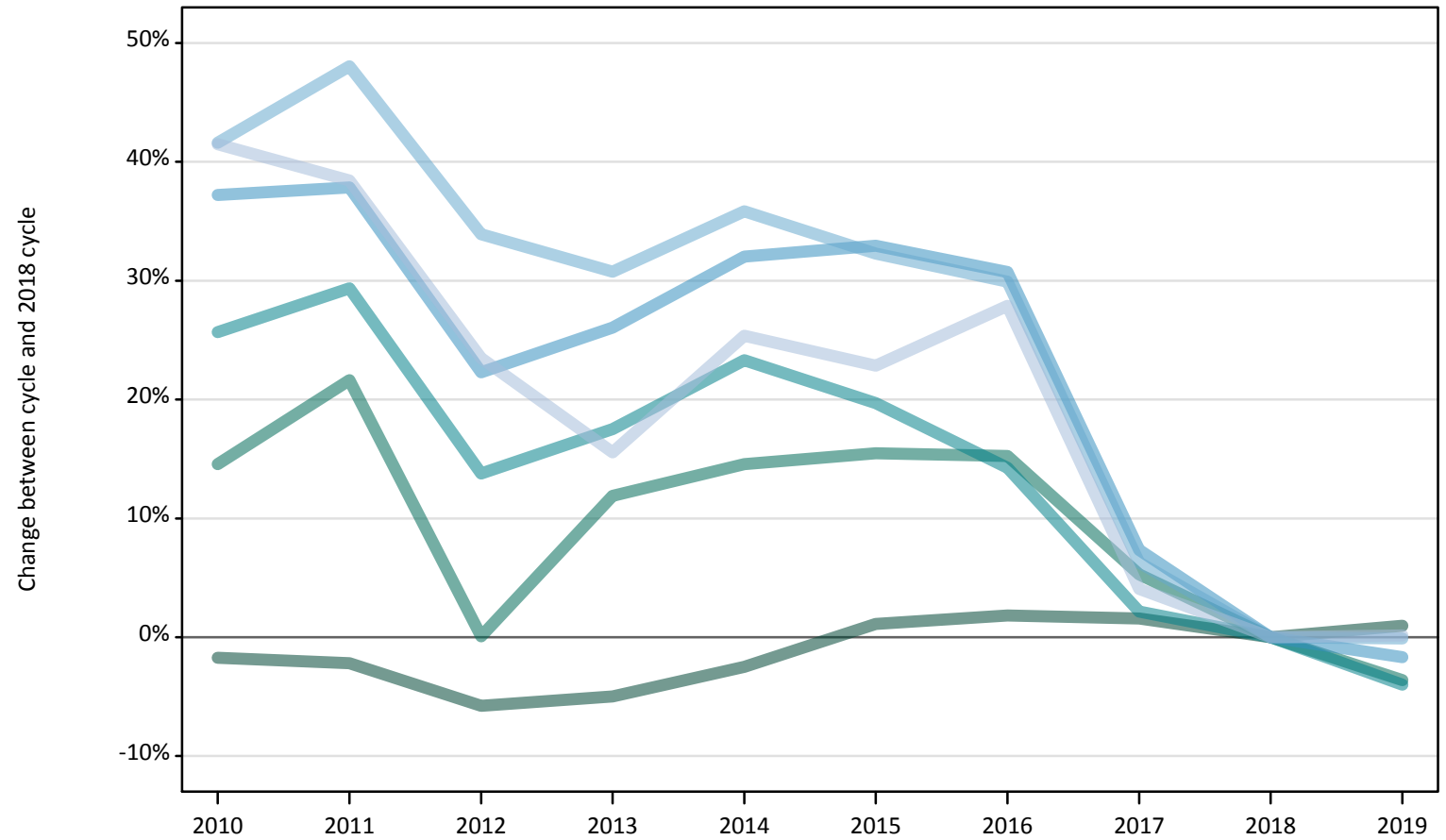
Difference between cycle and 2018 cycle

Domicile and age group		2010	2011	2012	2013	2014	2015	2016	2017	2018	2019
All domiciles	Under 18	-38%	-37%	-35%	-30%	-21%	-18%	-14%	-12%	0%	-1%
	18	-8%	-7%	-10%	-8%	-5%	-1%	0%	-0%	0%	2%
	19	4%	12%	-4%	6%	9%	10%	11%	3%	0%	-1%
	20-24	21%	25%	12%	16%	21%	18%	14%	1%	0%	-3%
	25-29	37%	38%	21%	25%	30%	31%	29%	6%	0%	-2%
	30-34	42%	47%	33%	30%	34%	31%	28%	6%	0%	-0%
	35 and over	42%	38%	23%	15%	25%	23%	27%	4%	0%	1%
	All ages	2%	4%	-3%	-0%	4%	6%	6%	1%	0%	0%

Note: The percentage change is not recorded in the above table for groups with fewer than 10 applicants in that cycle or in the 2018 cycle.

**D.2.36 Applicants by age: UK**  
Difference between cycle and 2018 cycle

- 18
- 19
- 20-24
- 25-29
- 30-34
- 35 and over



Note: The percentage change is not plotted in the above chart for groups with fewer than 500 applicants in any one cycle.

### D.2.37 Applicants by age: UK

Domicile and age group		2010	2011	2012	2013	2014	2015	2016	2017	2018	2019
UK	Under 18	2,230	2,050	1,700	1,530	1,560	1,650	1,680	1,590	1,580	1,530
	18	263,460	262,250	252,600	254,700	261,420	271,090	273,000	272,330	268,070	270,690
	19	92,970	98,700	81,220	90,810	92,970	93,700	93,540	85,440	81,150	78,230
	20-24	81,620	84,010	73,890	76,330	80,080	77,740	74,210	66,360	64,950	62,360
	25-29	23,740	23,850	21,160	21,810	22,840	23,000	22,620	18,580	17,300	17,010
	30-34	12,980	13,570	12,270	11,980	12,450	12,120	11,910	9,740	9,160	9,160
	35 and over	21,000	20,550	18,330	17,160	18,610	18,240	18,990	15,450	14,850	14,870
	All ages	498,000	504,980	461,180	474,310	489,940	497,550	495,940	469,490	457,070	453,840

### D.2.38 Applicants by age: UK

Difference between cycle and 2018 cycle

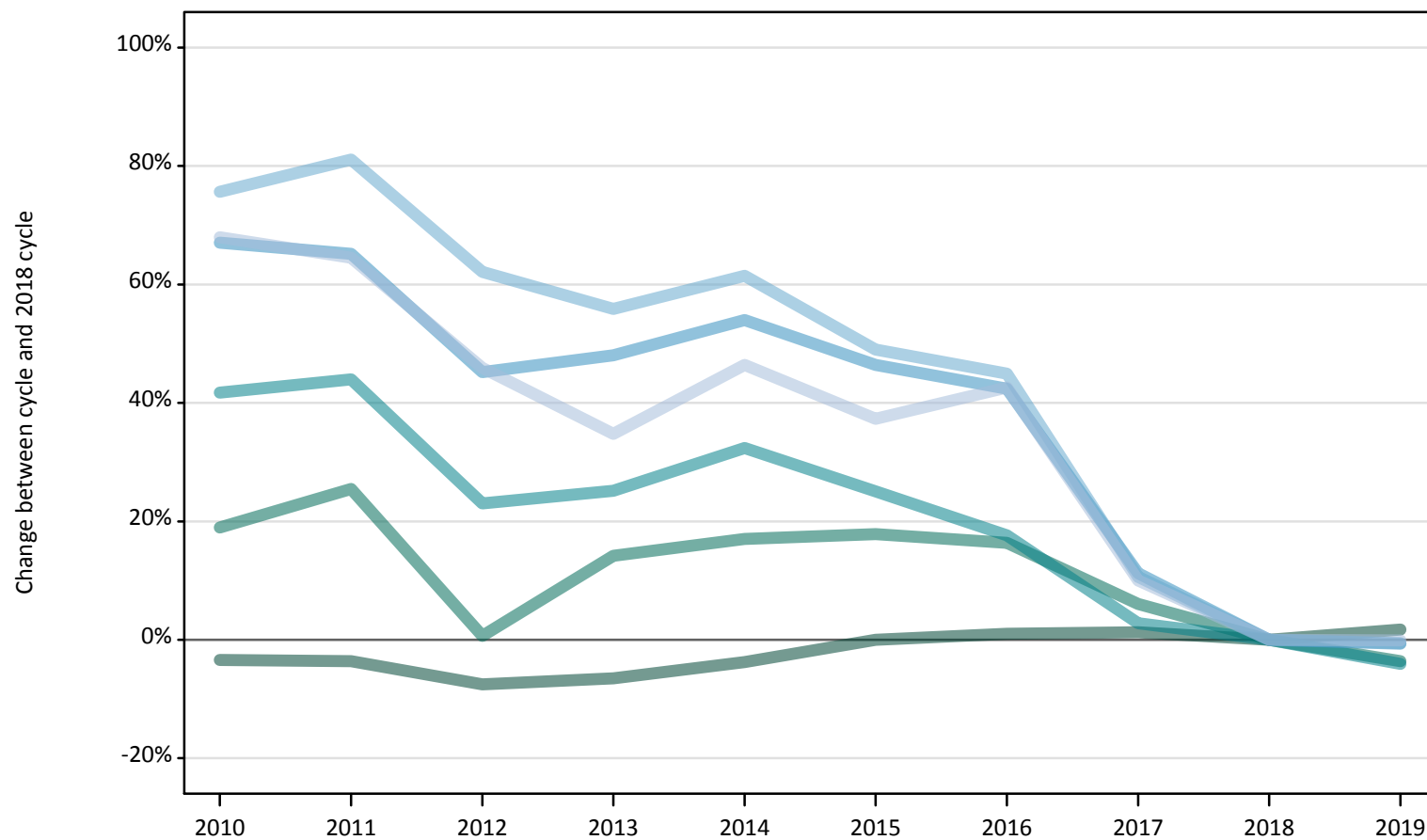
Domicile and age group		2010	2011	2012	2013	2014	2015	2016	2017	2018	2019
UK	Under 18	41%	29%	7%	-4%	-1%	4%	6%	1%	0%	-3%
	18	-2%	-2%	-6%	-5%	-2%	1%	2%	2%	0%	1%
	19	15%	22%	0%	12%	15%	15%	15%	5%	0%	-4%
	20-24	26%	29%	14%	18%	23%	20%	14%	2%	0%	-4%
	25-29	37%	38%	22%	26%	32%	33%	31%	7%	0%	-2%
	30-34	42%	48%	34%	31%	36%	32%	30%	6%	0%	-0%
	35 and over	41%	38%	23%	16%	25%	23%	28%	4%	0%	0%
	All ages	9%	10%	1%	4%	7%	9%	9%	3%	0%	-1%

Note: The percentage change is not recorded in the above table for groups with fewer than 10 applicants in that cycle or in the 2018 cycle.

### D.2.39 Applicants by age: England

Difference between cycle and 2018 cycle

- 18
- 19
- 20-24
- 25-29
- 30-34
- 35 and over



Note: The percentage change is not plotted in the above chart for groups with fewer than 500 applicants in any one cycle.

### D.2.40 Applicants by age: England

Domicile and age group		2010	2011	2012	2013	2014	2015	2016	2017	2018	2019
England	Under 18	1,210	1,080	850	800	860	900	890	810	800	740
	18	220,200	219,830	210,790	213,190	219,420	228,060	230,360	230,870	228,000	231,920
	19	82,250	86,740	69,600	78,950	80,900	81,480	80,470	73,310	69,140	66,650
	20-24	67,850	68,910	58,880	59,910	63,350	59,860	56,300	49,200	47,860	45,910
	25-29	19,520	19,300	16,960	17,300	17,990	17,110	16,640	13,000	11,690	11,610
	30-34	11,010	11,350	10,160	9,770	10,120	9,340	9,080	6,930	6,270	6,230
	35 and over	17,960	17,590	15,600	14,410	15,660	14,680	15,250	11,760	10,690	10,680
	All ages	419,990	424,800	382,840	394,330	408,300	411,420	408,990	385,870	374,440	373,730

### D.2.41 Applicants by age: England

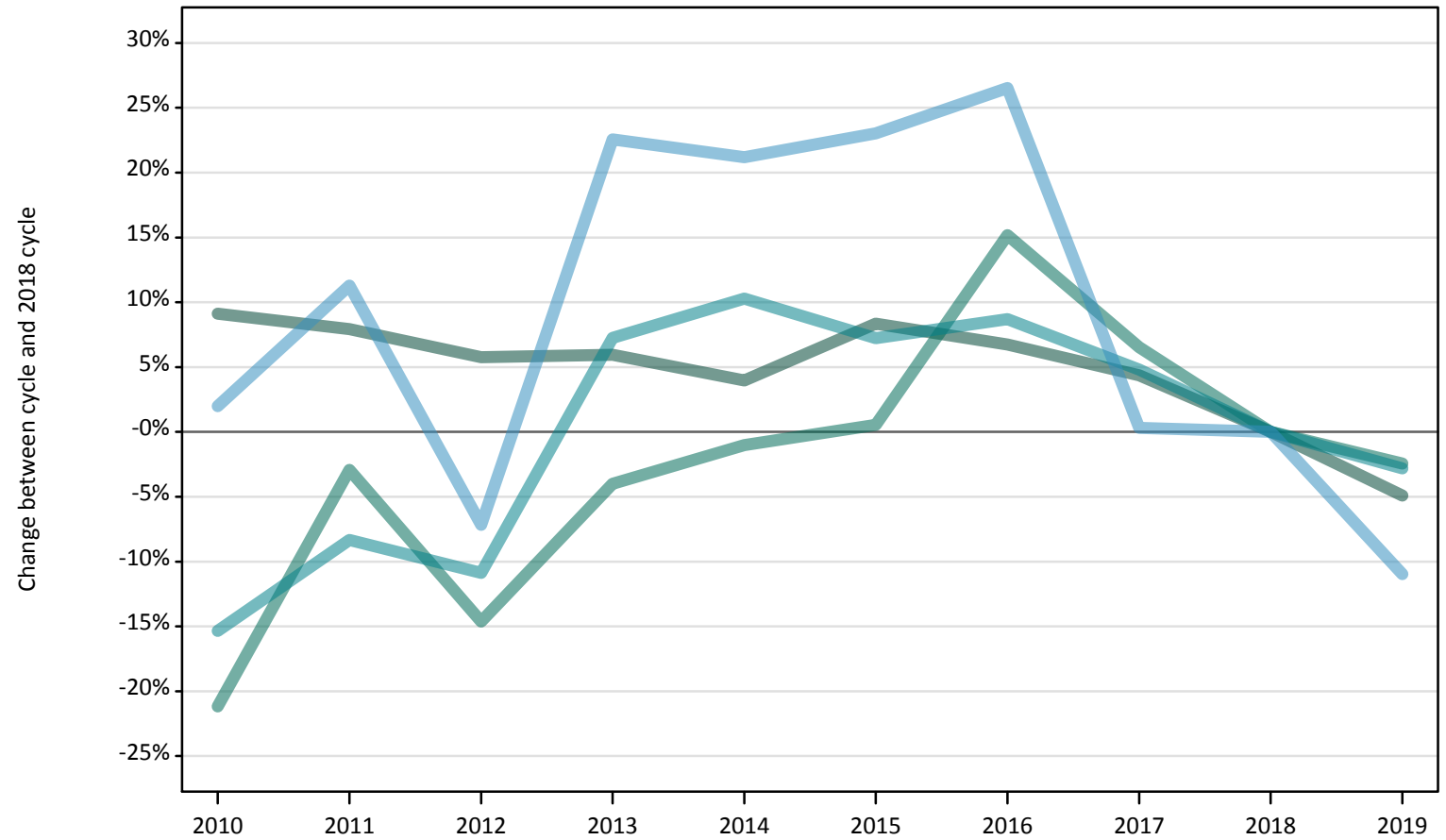
Difference between cycle and 2018 cycle

Domicile and age group		2010	2011	2012	2013	2014	2015	2016	2017	2018	2019
England	Under 18	52%	36%	6%	1%	8%	13%	12%	2%	0%	-7%
	18	-3%	-4%	-8%	-6%	-4%	0%	1%	1%	0%	2%
	19	19%	25%	1%	14%	17%	18%	16%	6%	0%	-4%
	20-24	42%	44%	23%	25%	32%	25%	18%	3%	0%	-4%
	25-29	67%	65%	45%	48%	54%	46%	42%	11%	0%	-1%
	30-34	76%	81%	62%	56%	61%	49%	45%	11%	0%	-1%
	35 and over	68%	65%	46%	35%	46%	37%	43%	10%	0%	-0%
	All ages	12%	13%	2%	5%	9%	10%	9%	3%	0%	-0%

Note: The percentage change is not recorded in the above table for groups with fewer than 10 applicants in that cycle or in the 2018 cycle.

**D.2.42 Applicants by age: Northern Ireland**  
Difference between cycle and 2018 cycle

- 18
- 19
- 20-24
- 25-29
- 30-34
- 35 and over



Note: The percentage change is not plotted in the above chart for groups with fewer than 500 applicants in any one cycle.

### D.2.43 Applicants by age: Northern Ireland

Domicile and age group		2010	2011	2012	2013	2014	2015	2016	2017	2018	2019
Northern Ireland	Under 18	50	50	50	30	30	40	40	30	30	40
	18	12,020	11,890	11,650	11,670	11,450	11,940	11,760	11,500	11,020	10,470
	19	2,350	2,900	2,550	2,870	2,950	3,000	3,440	3,180	2,980	2,910
	20-24	2,740	2,970	2,890	3,480	3,570	3,470	3,520	3,400	3,240	3,150
	25-29	670	730	610	800	800	810	830	660	660	580
	30-34	250	260	260	350	350	380	390	340	310	350
	35 and over	350	340	290	390	400	400	420	370	390	410
	All ages	18,440	19,130	18,290	19,590	19,550	20,040	20,400	19,470	18,630	17,910

### D.2.44 Applicants by age: Northern Ireland

Difference between cycle and 2018 cycle

Domicile and age group		2010	2011	2012	2013	2014	2015	2016	2017	2018	2019
Northern Ireland	Under 18	83%	66%	72%	17%	-7%	21%	38%	-14%	0%	21%
	18	9%	8%	6%	6%	4%	8%	7%	4%	0%	-5%
	19	-21%	-3%	-15%	-4%	-1%	1%	15%	7%	0%	-2%
	20-24	-15%	-8%	-11%	7%	10%	7%	9%	5%	0%	-3%
	25-29	2%	11%	-7%	23%	21%	23%	27%	0%	0%	-11%
	30-34	-21%	-18%	-18%	11%	12%	23%	24%	10%	0%	12%
	35 and over	-10%	-13%	-26%	1%	2%	3%	8%	-4%	0%	5%
	All ages	-1%	3%	-2%	5%	5%	8%	10%	5%	0%	-4%

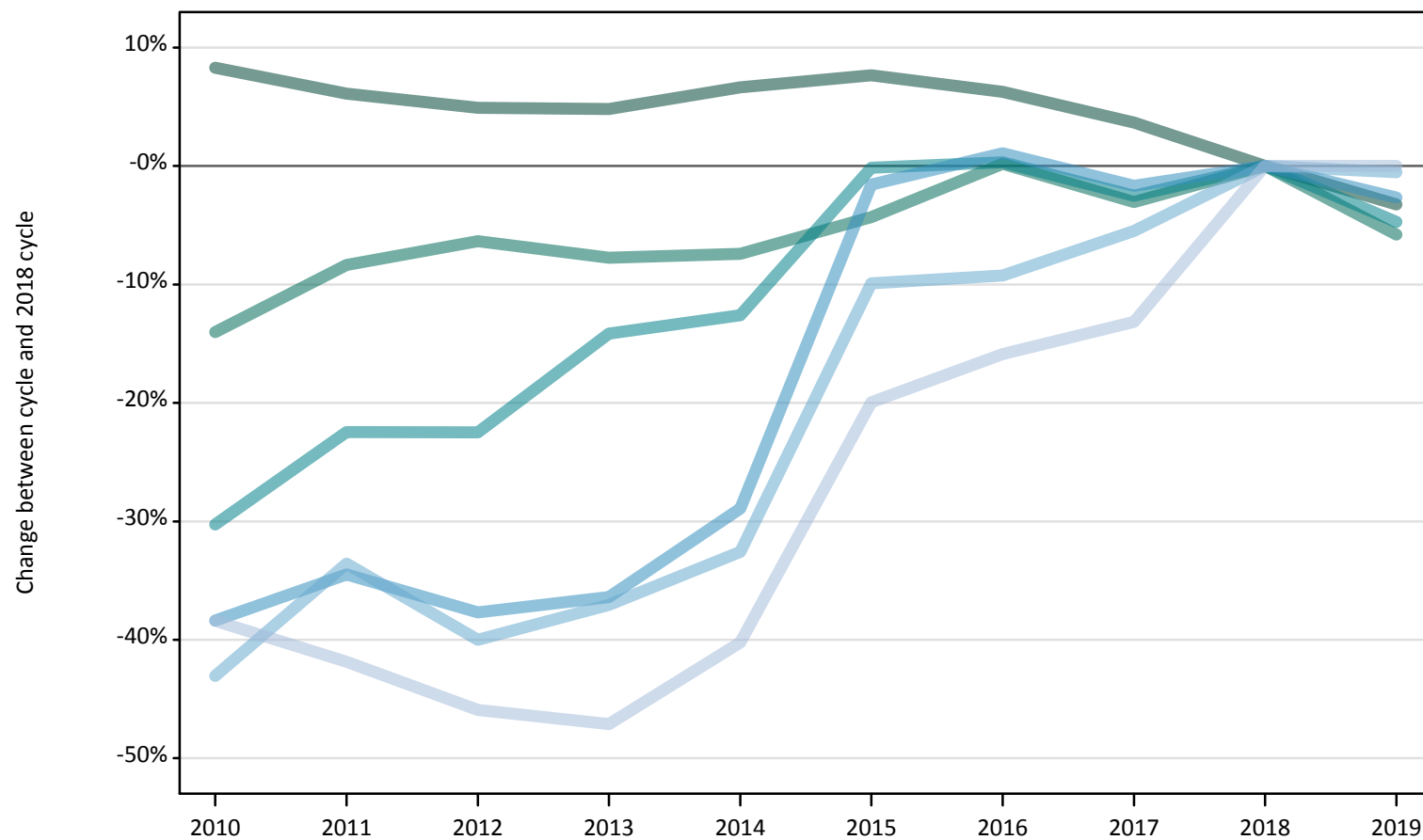
Note: The percentage change is not recorded in the above table for groups with fewer than 10 applicants in that cycle or in the 2018 cycle.



### D.2.45 Applicants by age: Scotland

Difference between cycle and 2018 cycle

- 18
- 19
- 20-24
- 25-29
- 30-34
- 35 and over



Note: The percentage change is not plotted in the above chart for groups with fewer than 500 applicants in any one cycle.

### D.2.46 Applicants by age: Scotland

Domicile and age group		2010	2011	2012	2013	2014	2015	2016	2017	2018	2019
Scotland	Under 18	920	870	780	660	650	700	720	740	730	730
	18	19,560	19,160	18,950	18,930	19,260	19,440	19,190	18,720	18,060	17,480
	19	4,890	5,220	5,330	5,250	5,270	5,450	5,700	5,520	5,690	5,360
	20-24	7,770	8,640	8,640	9,570	9,740	11,130	11,180	10,870	11,150	10,620
	25-29	2,510	2,670	2,540	2,590	2,890	4,000	4,110	4,000	4,070	3,960
	30-34	1,190	1,390	1,260	1,320	1,410	1,890	1,900	1,980	2,100	2,090
	35 and over	1,920	1,810	1,680	1,640	1,860	2,490	2,620	2,700	3,110	3,110
	All ages	38,760	39,760	39,170	39,950	41,080	45,100	45,420	44,530	44,900	43,340

### D.2.47 Applicants by age: Scotland

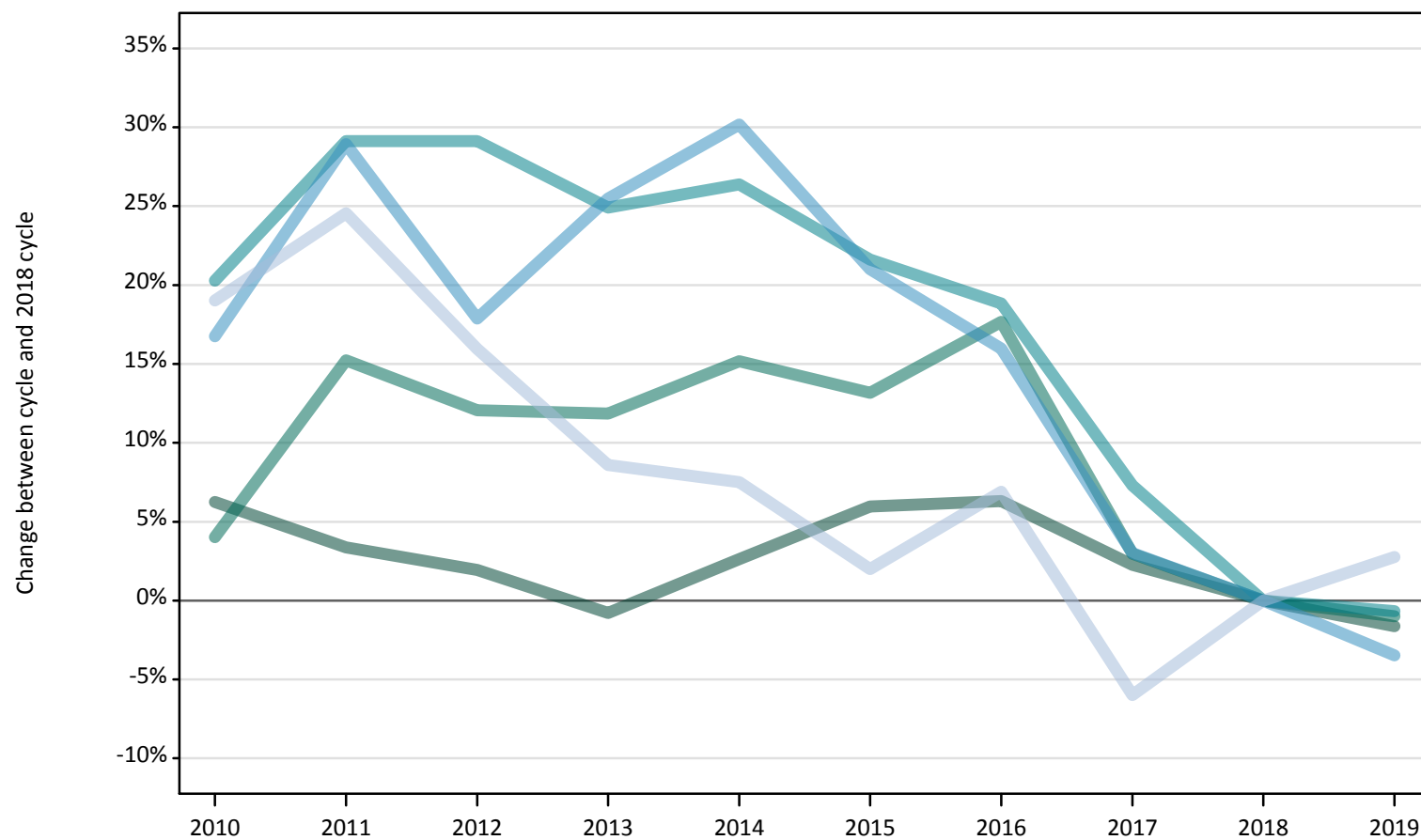
Difference between cycle and 2018 cycle

Domicile and age group		2010	2011	2012	2013	2014	2015	2016	2017	2018	2019
Scotland	Under 18	27%	20%	7%	-10%	-11%	-5%	-1%	2%	0%	0%
	18	8%	6%	5%	5%	7%	8%	6%	4%	0%	-3%
	19	-14%	-8%	-6%	-8%	-7%	-4%	0%	-3%	0%	-6%
	20-24	-30%	-22%	-22%	-14%	-13%	-0%	0%	-3%	0%	-5%
	25-29	-38%	-34%	-38%	-36%	-29%	-2%	1%	-2%	0%	-3%
	30-34	-43%	-34%	-40%	-37%	-33%	-10%	-9%	-5%	0%	-1%
	35 and over	-38%	-42%	-46%	-47%	-40%	-20%	-16%	-13%	0%	0%
	All ages	-14%	-11%	-13%	-11%	-9%	0%	1%	-1%	0%	-3%

Note: The percentage change is not recorded in the above table for groups with fewer than 10 applicants in that cycle or in the 2018 cycle.

**D.2.48 Applicants by age: Wales**  
Difference between cycle and 2018 cycle

- 18
- 19
- 20-24
- 25-29
- 30-34
- 35 and over



Note: The percentage change is not plotted in the above chart for groups with fewer than 500 applicants in any one cycle.

### D.2.49 Applicants by age: Wales

Domicile and age group		2010	2011	2012	2013	2014	2015	2016	2017	2018	2019
Wales	Under 18	50	50	30	40	30	20	30	10	30	20
	18	11,680	11,370	11,210	10,910	11,280	11,650	11,690	11,250	11,000	10,820
	19	3,480	3,850	3,740	3,740	3,850	3,780	3,930	3,440	3,340	3,310
	20-24	3,250	3,490	3,490	3,380	3,420	3,290	3,210	2,900	2,700	2,680
	25-29	1,050	1,150	1,060	1,120	1,170	1,080	1,040	920	900	860
	30-34	530	570	600	550	570	510	530	480	490	490
	35 and over	780	810	760	710	700	670	700	610	650	670
	All ages	20,810	21,290	20,880	20,440	21,010	21,000	21,130	19,620	19,100	18,850

### D.2.50 Applicants by age: Wales

Difference between cycle and 2018 cycle

Domicile and age group		2010	2011	2012	2013	2014	2015	2016	2017	2018	2019
Wales	Under 18	74%	67%	-4%	33%	0%	-26%	11%	-48%	0%	-19%
	18	6%	3%	2%	-1%	3%	6%	6%	2%	0%	-2%
	19	4%	15%	12%	12%	15%	13%	18%	3%	0%	-1%
	20-24	20%	29%	29%	25%	26%	22%	19%	7%	0%	-1%
	25-29	17%	29%	18%	25%	30%	21%	16%	3%	0%	-3%
	30-34	8%	17%	22%	12%	17%	5%	9%	-1%	0%	0%
	35 and over	19%	25%	16%	9%	8%	2%	7%	-6%	0%	3%
	All ages	9%	11%	9%	7%	10%	10%	11%	3%	0%	-1%

Note: The percentage change is not recorded in the above table for groups with fewer than 10 applicants in that cycle or in the 2018 cycle.

**D.2.51 Applicants by age: EU (excluding UK)**  
Difference between cycle and 2018 cycle

- 18
- 19
- 20-24
- 25-29
- 30-34
- 35 and over



Note: The percentage change is not plotted in the above chart for groups with fewer than 500 applicants in any one cycle.

### D.2.52 Applicants by age: EU (excluding UK)

Domicile and age group		2010	2011	2012	2013	2014	2015	2016	2017	2018	2019
EU (excluding UK)	Under 18	2,670	2,850	2,740	2,930	3,230	3,700	3,780	3,810	4,020	4,120
	18	11,970	12,780	12,390	12,990	13,980	15,570	16,830	16,110	16,790	17,140
	19	10,370	12,440	10,980	11,670	12,040	12,830	13,850	12,920	13,380	13,640
	20-24	9,620	10,790	8,580	8,890	9,100	9,070	9,250	8,080	8,090	7,960
	25-29	1,330	1,370	1,000	1,030	980	1,100	1,100	810	870	710
	30-34	330	350	290	270	230	250	200	190	210	160
	35 and over	250	220	220	210	220	200	230	160	160	160
	All ages	36,530	40,790	36,210	37,990	39,780	42,720	45,220	42,070	43,510	43,890

### D.2.53 Applicants by age: EU (excluding UK)

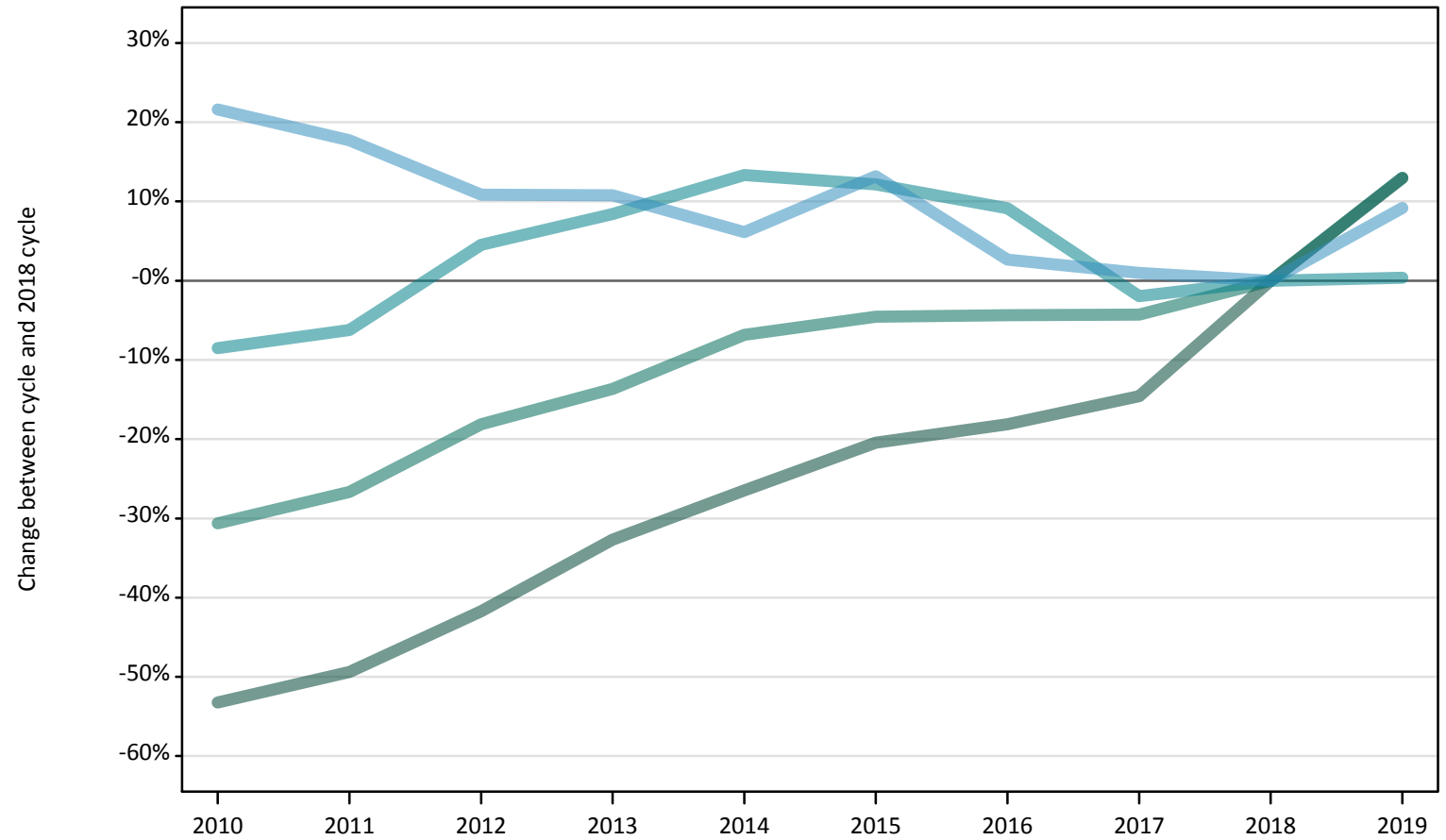
Difference between cycle and 2018 cycle

Domicile and age group		2010	2011	2012	2013	2014	2015	2016	2017	2018	2019
EU (excluding UK)	Under 18	-34%	-29%	-32%	-27%	-20%	-8%	-6%	-5%	0%	2%
	18	-29%	-24%	-26%	-23%	-17%	-7%	0%	-4%	0%	2%
	19	-22%	-7%	-18%	-13%	-10%	-4%	4%	-3%	0%	2%
	20-24	19%	33%	6%	10%	13%	12%	14%	-0%	0%	-2%
	25-29	54%	58%	16%	19%	13%	27%	27%	-6%	0%	-17%
	30-34	61%	67%	42%	31%	12%	23%	-5%	-6%	0%	-23%
	35 and over	51%	35%	33%	29%	33%	22%	38%	-5%	0%	0%
	All ages	-16%	-6%	-17%	-13%	-9%	-2%	4%	-3%	0%	1%

Note: The percentage change is not recorded in the above table for groups with fewer than 10 applicants in that cycle or in the 2018 cycle.

**D.2.54 Applicants by age: Not EU**  
Difference between cycle and 2018 cycle

- 18
- 19
- 20-24
- 25-29
- 30-34
- 35 and over



Note: The percentage change is not plotted in the above chart for groups with fewer than 500 applicants in any one cycle.

### D.2.55 Applicants by age: Not EU

Domicile and age group		2010	2011	2012	2013	2014	2015	2016	2017	2018	2019
Not EU	Under 18	2,510	2,680	3,370	3,930	4,650	4,500	4,880	5,210	6,400	6,200
	18	12,230	13,230	15,240	17,600	19,220	20,800	21,410	22,340	26,150	29,530
	19	9,700	10,250	11,440	12,060	13,020	13,340	13,360	13,380	13,970	15,790
	20-24	9,330	9,560	10,660	11,060	11,560	11,440	11,130	10,000	10,200	10,240
	25-29	1,370	1,320	1,250	1,250	1,190	1,270	1,150	1,140	1,120	1,230
	30-34	480	420	390	370	380	380	370	340	350	370
	35 and over	370	290	290	250	270	290	250	230	260	340
	All ages	35,980	37,760	42,640	46,510	50,290	52,020	52,560	52,630	58,450	63,690

### D.2.56 Applicants by age: Not EU

Difference between cycle and 2018 cycle

Domicile and age group		2010	2011	2012	2013	2014	2015	2016	2017	2018	2019
Not EU	Under 18	-61%	-58%	-47%	-39%	-27%	-30%	-24%	-18%	0%	-3%
	18	-53%	-49%	-42%	-33%	-26%	-20%	-18%	-15%	0%	13%
	19	-31%	-27%	-18%	-14%	-7%	-5%	-4%	-4%	0%	13%
	20-24	-9%	-6%	5%	8%	13%	12%	9%	-2%	0%	0%
	25-29	22%	18%	11%	11%	6%	13%	3%	1%	0%	9%
	30-34	38%	21%	13%	7%	11%	9%	6%	-1%	0%	7%
	35 and over	44%	13%	11%	-5%	5%	11%	-2%	-10%	0%	31%
	All ages	-38%	-35%	-27%	-20%	-14%	-11%	-10%	-10%	0%	9%

Note: The percentage change is not recorded in the above table for groups with fewer than 10 applicants in that cycle or in the 2018 cycle.



## D.2.57 Technical notes and definitions

Applicants have been able to submit applications for all 2019 courses since early September.

Applicants who submit their applications to UCAS by the January deadline are considered as 'on time' applicants for the large majority of courses offered through UCAS.

This statistical release covers all Main Scheme applicants who submit their applications to UCAS by the January deadline, including those who have applied for courses with a 15 October deadline. Counts of RPAs (records of prior acceptance) are not included.

Counts of the number of applicants reported have been rounded to the nearest 10 applicants, this may result in instances where totals do not equal the sum of the components. Proportional changes have been rounded to the nearest whole percentage point.

### Age

This statistical release uses country-specific age definitions which align with the cut off points for school/college cohorts within the different administrations of the UK. For England and Wales ages are defined on the 31 August, for Northern Ireland on the 1 July and for Scotland on the 28 February the following year. Defining ages in this way matches the assignment of children to school cohorts. For applicants outside of the UK the cohort cut off for England and Wales has been used.

### Applicant

A person who has made an application in the UCAS system during the cycle reported (including applications for deferred entry). Records of prior acceptance (RPAs) are excluded.

### Application

An application to a course at a provider made by an applicant in the UCAS main scheme. Applicants may make up to five main scheme applications.

### Country of provider

An applicant may be counted once for each provider country they have applied to in the main scheme. If an applicant has applied to providers in multiple countries then the applicant is counted once within each country of provider applied to.

### Domicile

Declared area of permanent residence. The Channel Islands and the Isle of Man have been assigned as 'Not EU'.

### Ethnic group

High level grouping of ethnic origin as declared by the applicant: 'Asian', 'Black', 'Mixed', 'White', 'Other', 'Unknown'.

### First time applicant

An applicant that did not apply to the UCAS scheme in the previous cycle.

### Main scheme

The main UCAS application scheme through which up to five providers/courses can be applied to. This opens in September and closes to new applications on 30 June the following year.

### Reapplicant

An applicant that applied to the UCAS scheme in the previous cycle.

### Sex

As declared by the applicant.

### SIMD 2016

Scottish Index of Multiple Deprivation identifies small area concentrations of multiple deprivation across all of Scotland, providing a relative measure of deprivation among small areas (data zones). In this report, the SIMD 2016 has been used to group areas in each year in the times series.

### POLAR4

Developed by HEFCE and classifies small areas across the UK into five groups, according to their level of young participation in HE. Each of these groups represents around 20 per cent of young people, and is ranked from quintile 1 (areas with the lowest young participation rates, considered as the most disadvantaged) to quintile 5 (highest young participation rates, considered most advantaged). POLAR4 is the most recent version of the POLAR classification, and is available for the first time in UCAS reporting since its launch in 2017.

### Tariff Group of provider

Providers are grouped as higher, medium or lower tariff based on their average levels of attainment of their accepted applicants (summarised through UCAS Tariff points) in recent cycles. Each group of providers accounted for around a third of all UK 18 year old acceptances in recent cycles.

### Subject group

The JACS3 classification used to classify courses into subject groups. With the introduction of HECoS for the 2019 cycle, new courses that were classified using HECoS instead of JACS have been allocated modelled JACS3 values.

### Subject group (HECoS)

The CAH classification used to categorise HECoS course subject codes into subject groups. A course may be associated with up to 5 individual subject codes and their respective percentage weight. For this analysis, application totals for subject groups have been calculated by apportioning course applications as weighted by subject group.