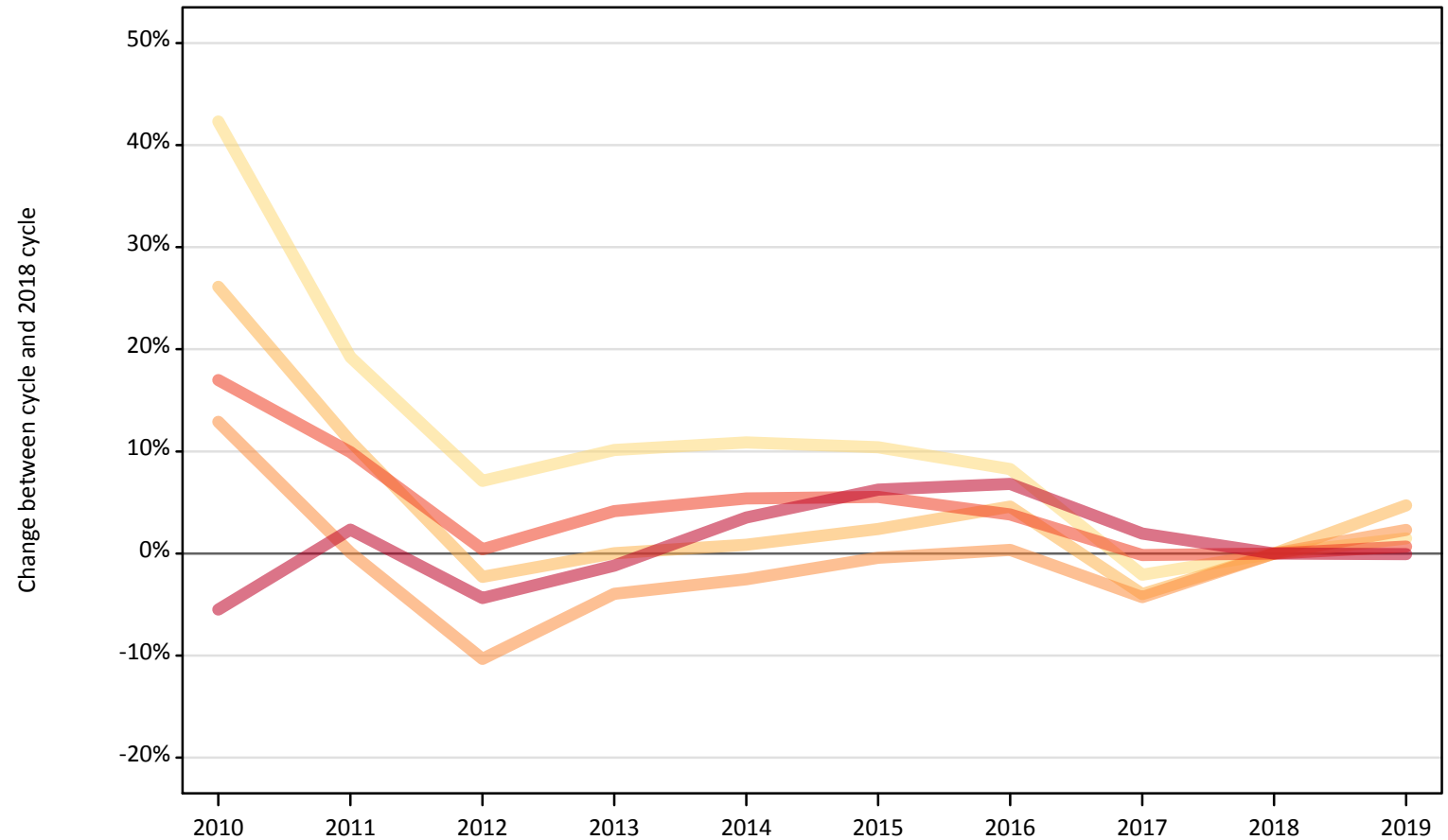


January Deadline Analysis: Applications

Applicants by number of applications at the 15 January deadline

D.4.1 Applicants by domicile and number of applications made : All domiciles Difference between cycle and 2018 cycle

- 1 application
- 2 applications
- 3 applications
- 4 applications
- 5 applications



Note: The percentage change is not plotted in the above chart for groups with fewer than 500 applications in any one cycle.

D.4.2 Applicants by domicile and number of applications made : All domiciles

Domicile and number of applications made by applicant		2010	2011	2012	2013	2014	2015	2016	2017	2018	2019
All domiciles	1 application	53,680	44,970	40,410	41,550	41,830	41,640	40,840	36,940	37,720	38,280
	2 applications	26,640	23,450	20,640	21,130	21,310	21,630	22,090	20,290	21,120	22,120
	3 applications	35,210	31,210	27,960	29,950	30,390	31,050	31,290	29,850	31,180	31,900
	4 applications	60,690	57,020	52,090	54,020	54,670	54,750	53,850	51,790	51,870	52,230
	5 applications	394,300	426,880	398,930	412,170	431,810	443,210	445,640	425,330	417,130	416,900
	All	570,510	583,530	540,020	558,820	580,000	592,290	593,720	564,190	559,030	561,420

D.4.3 Applicants by domicile and number of applications made : All domiciles

Difference between cycle and 2018 cycle

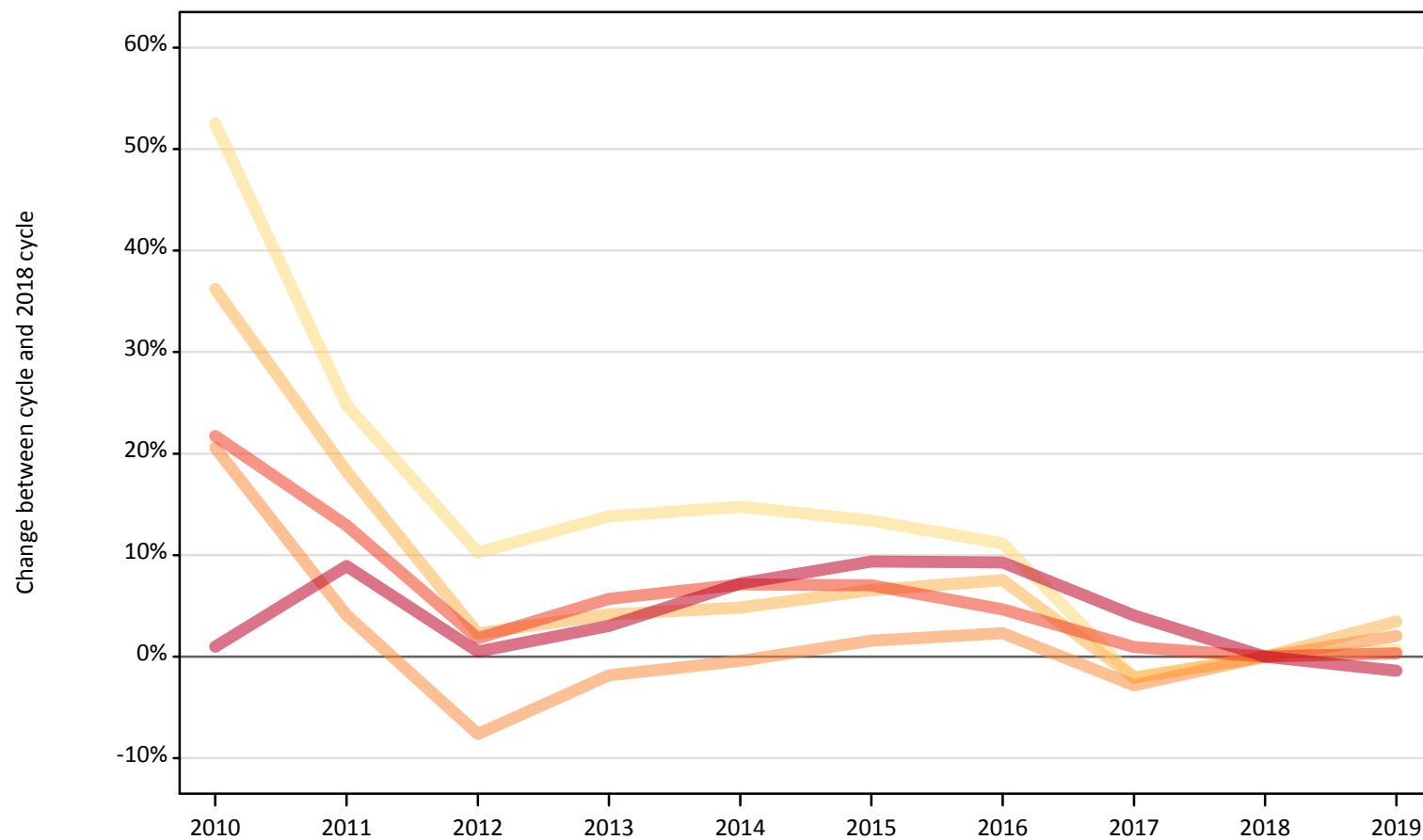
Domicile and number of applications made by applicant		2010	2011	2012	2013	2014	2015	2016	2017	2018	2019
All domiciles	1 application	42%	19%	7%	10%	11%	10%	8%	-2%	0%	1%
	2 applications	26%	11%	-2%	0%	1%	2%	5%	-4%	0%	5%
	3 applications	13%	0%	-10%	-4%	-3%	-0%	0%	-4%	0%	2%
	4 applications	17%	10%	0%	4%	5%	6%	4%	-0%	0%	1%
	5 applications	-5%	2%	-4%	-1%	4%	6%	7%	2%	0%	-0%
	All	2%	4%	-3%	-0%	4%	6%	6%	1%	0%	0%

Note: The percentage change is not recorded in the above table for groups with fewer than 10 applicants in that cycle or in the 2018 cycle.

D.4.4 Applicants by domicile and number of applications made : UK

Difference between cycle and 2018 cycle

- 1 application
- 2 applications
- 3 applications
- 4 applications
- 5 applications



Note: The percentage change is not plotted in the above chart for groups with fewer than 500 applications in any one cycle.

D.4.5 Applicants by domicile and number of applications made : UK

Domicile and number of applications made by applicant		2010	2011	2012	2013	2014	2015	2016	2017	2018	2019
UK	1 application	47,070	38,520	34,030	35,130	35,430	35,000	34,310	30,220	30,860	31,080
	2 applications	23,930	20,770	17,970	18,300	18,420	18,720	18,890	17,210	17,570	18,170
	3 applications	31,830	27,480	24,380	25,910	26,290	26,810	27,010	25,650	26,400	26,940
	4 applications	53,850	49,960	45,040	46,760	47,380	47,350	46,300	44,660	44,240	44,380
	5 applications	341,320	368,250	339,760	348,220	362,420	369,670	369,430	351,750	338,010	333,280
	All	498,000	504,980	461,180	474,310	489,940	497,550	495,940	469,490	457,070	453,840

D.4.6 Applicants by domicile and number of applications made : UK

Difference between cycle and 2018 cycle

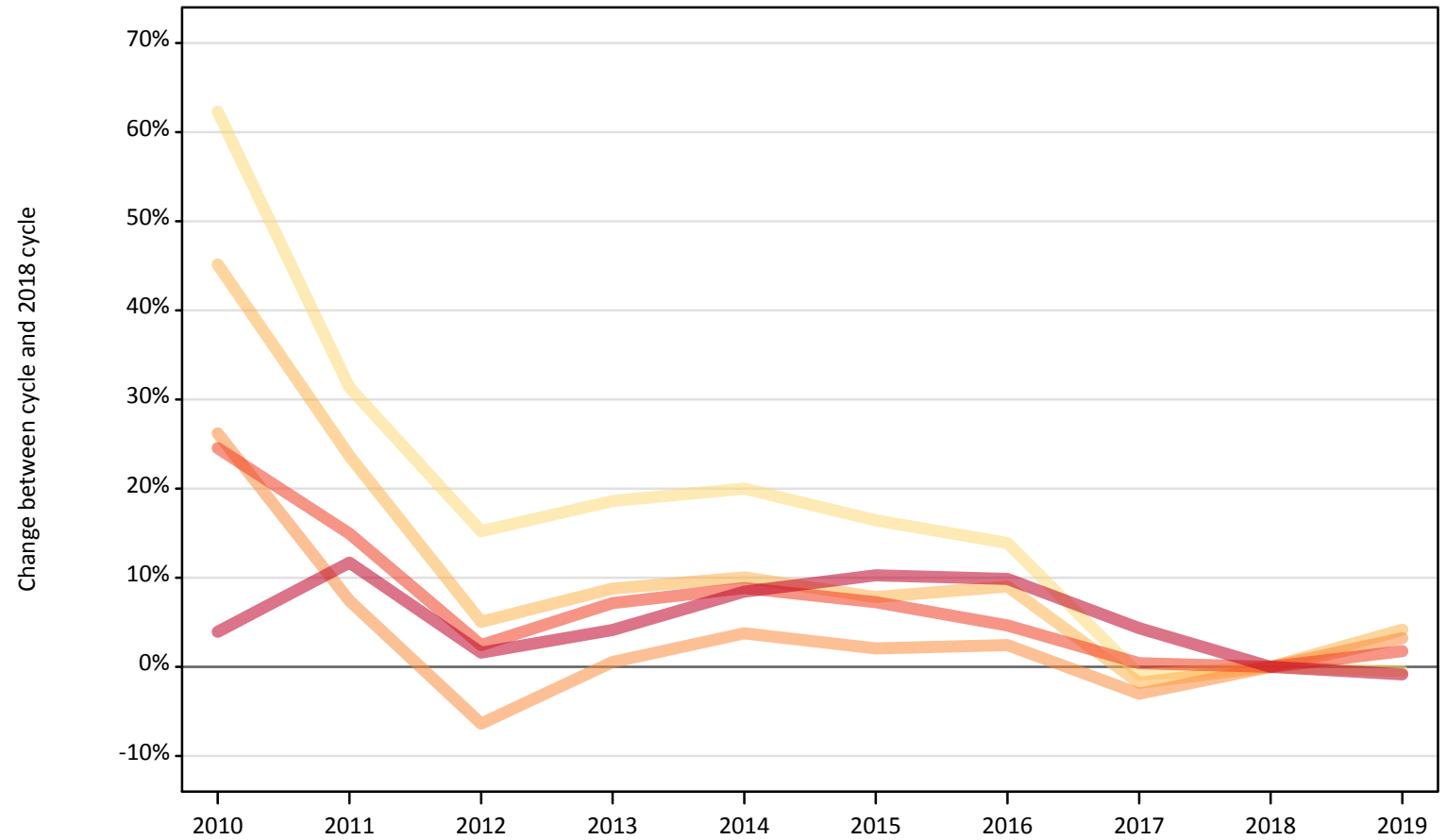
Domicile and number of applications made by applicant		2010	2011	2012	2013	2014	2015	2016	2017	2018	2019
UK	1 application	53%	25%	10%	14%	15%	13%	11%	-2%	0%	1%
	2 applications	36%	18%	2%	4%	5%	7%	8%	-2%	0%	3%
	3 applications	21%	4%	-8%	-2%	-0%	2%	2%	-3%	0%	2%
	4 applications	22%	13%	2%	6%	7%	7%	5%	1%	0%	0%
	5 applications	1%	9%	1%	3%	7%	9%	9%	4%	0%	-1%
	All	9%	10%	1%	4%	7%	9%	9%	3%	0%	-1%

Note: The percentage change is not recorded in the above table for groups with fewer than 10 applicants in that cycle or in the 2018 cycle.

D.4.7 Applicants by domicile and number of applications made : England

Difference between cycle and 2018 cycle

- 1 application
- 2 applications
- 3 applications
- 4 applications
- 5 applications



Note: The percentage change is not plotted in the above chart for groups with fewer than 500 applications in any one cycle.

D.4.8 Applicants by domicile and number of applications made : England

Domicile and number of applications made by applicant		2010	2011	2012	2013	2014	2015	2016	2017	2018	2019
England	1 application	38,530	31,180	27,350	28,160	28,490	27,640	27,040	23,530	23,740	23,620
	2 applications	18,640	15,880	13,490	13,970	14,130	13,850	14,000	12,610	12,840	13,380
	3 applications	25,000	21,280	18,550	19,920	20,560	20,220	20,290	19,210	19,810	20,450
	4 applications	43,940	40,560	36,150	37,810	38,410	37,850	36,920	35,430	35,290	35,920
	5 applications	293,890	315,910	287,300	294,480	306,710	311,870	310,730	295,090	282,770	280,370
	All	419,990	424,800	382,840	394,330	408,300	411,420	408,990	385,870	374,440	373,730

D.4.9 Applicants by domicile and number of applications made : England

Difference between cycle and 2018 cycle

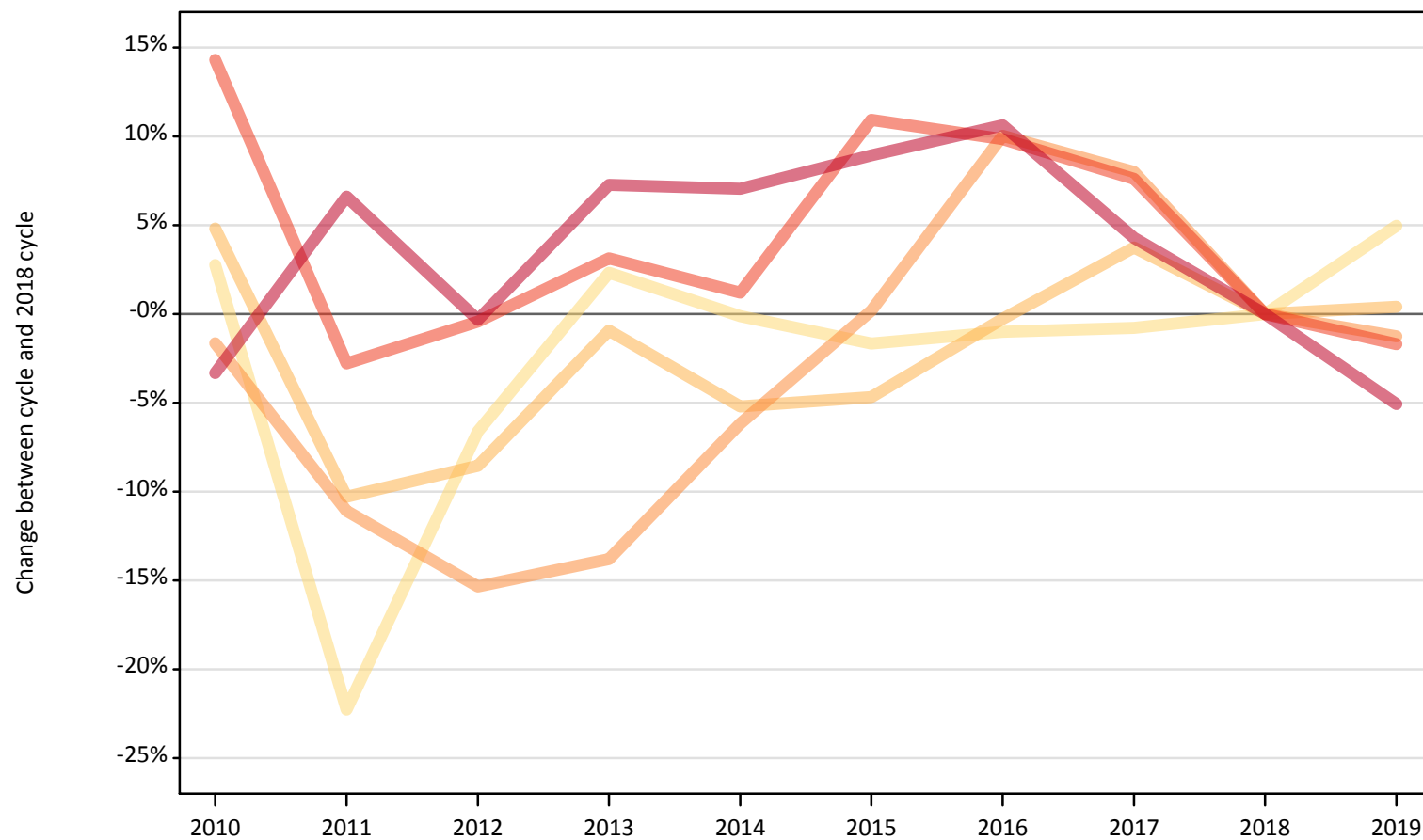
Domicile and number of applications made by applicant		2010	2011	2012	2013	2014	2015	2016	2017	2018	2019
England	1 application	62%	31%	15%	19%	20%	16%	14%	-1%	0%	-0%
	2 applications	45%	24%	5%	9%	10%	8%	9%	-2%	0%	4%
	3 applications	26%	7%	-6%	1%	4%	2%	2%	-3%	0%	3%
	4 applications	25%	15%	2%	7%	9%	7%	5%	0%	0%	2%
	5 applications	4%	12%	2%	4%	8%	10%	10%	4%	0%	-1%
	All	12%	13%	2%	5%	9%	10%	9%	3%	0%	-0%

Note: The percentage change is not recorded in the above table for groups with fewer than 10 applicants in that cycle or in the 2018 cycle.

D.4.10 Applicants by domicile and number of applications made : Northern Ireland

Difference between cycle and 2018 cycle

- 1 application
- 2 applications
- 3 applications
- 4 applications
- 5 applications



Note: The percentage change is not plotted in the above chart for groups with fewer than 500 applications in any one cycle.

D.4.11 Applicants by domicile and number of applications made : Northern Ireland

Domicile and number of applications made by applicant		2010	2011	2012	2013	2014	2015	2016	2017	2018	2019
Northern Ireland	1 application	930	710	850	930	910	890	900	900	910	950
	2 applications	790	670	690	740	710	710	750	780	750	750
	3 applications	1,020	920	880	890	970	1,040	1,140	1,120	1,040	1,020
	4 applications	1,890	1,610	1,650	1,710	1,680	1,840	1,820	1,780	1,660	1,630
	5 applications	13,800	15,220	14,230	15,310	15,280	15,550	15,790	14,890	14,280	13,550
	All	18,440	19,130	18,290	19,590	19,550	20,040	20,400	19,470	18,630	17,910

D.4.12 Applicants by domicile and number of applications made : Northern Ireland

Difference between cycle and 2018 cycle

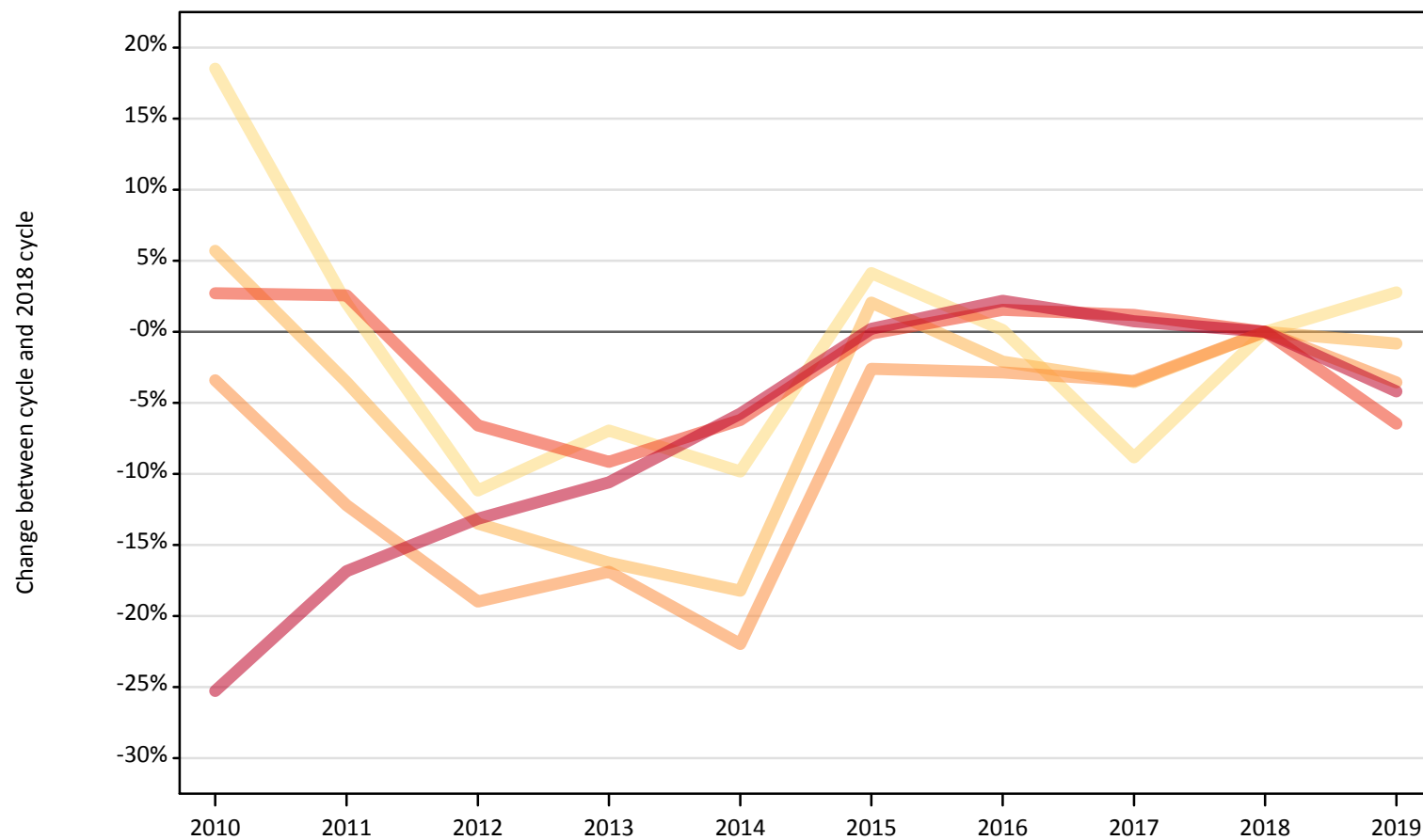
Domicile and number of applications made by applicant		2010	2011	2012	2013	2014	2015	2016	2017	2018	2019
Northern Ireland	1 application	3%	-22%	-7%	2%	-0%	-2%	-1%	-1%	0%	5%
	2 applications	5%	-10%	-9%	-1%	-5%	-5%	-0%	4%	0%	0%
	3 applications	-2%	-11%	-15%	-14%	-6%	0%	10%	8%	0%	-1%
	4 applications	14%	-3%	-0%	3%	1%	11%	10%	8%	0%	-2%
	5 applications	-3%	7%	-0%	7%	7%	9%	11%	4%	0%	-5%
	All	-1%	3%	-2%	5%	5%	8%	10%	5%	0%	-4%

Note: The percentage change is not recorded in the above table for groups with fewer than 10 applicants in that cycle or in the 2018 cycle.

D.4.13 Applicants by domicile and number of applications made : Scotland

Difference between cycle and 2018 cycle

- 1 application
- 2 applications
- 3 applications
- 4 applications
- 5 applications



Note: The percentage change is not plotted in the above chart for groups with fewer than 500 applications in any one cycle.

D.4.14 Applicants by domicile and number of applications made : Scotland

Domicile and number of applications made by applicant		2010	2011	2012	2013	2014	2015	2016	2017	2018	2019
Scotland	1 application	5,310	4,570	3,980	4,170	4,040	4,660	4,480	4,080	4,480	4,600
	2 applications	3,180	2,900	2,600	2,520	2,460	3,070	2,940	2,900	3,000	2,980
	3 applications	3,930	3,570	3,290	3,380	3,170	3,960	3,950	3,930	4,070	3,920
	4 applications	5,240	5,230	4,770	4,630	4,780	5,100	5,180	5,160	5,100	4,770
	5 applications	21,120	23,500	24,540	25,260	26,630	28,320	28,870	28,460	28,250	27,070
	All	38,760	39,760	39,170	39,950	41,080	45,100	45,420	44,530	44,900	43,340

D.4.15 Applicants by domicile and number of applications made : Scotland

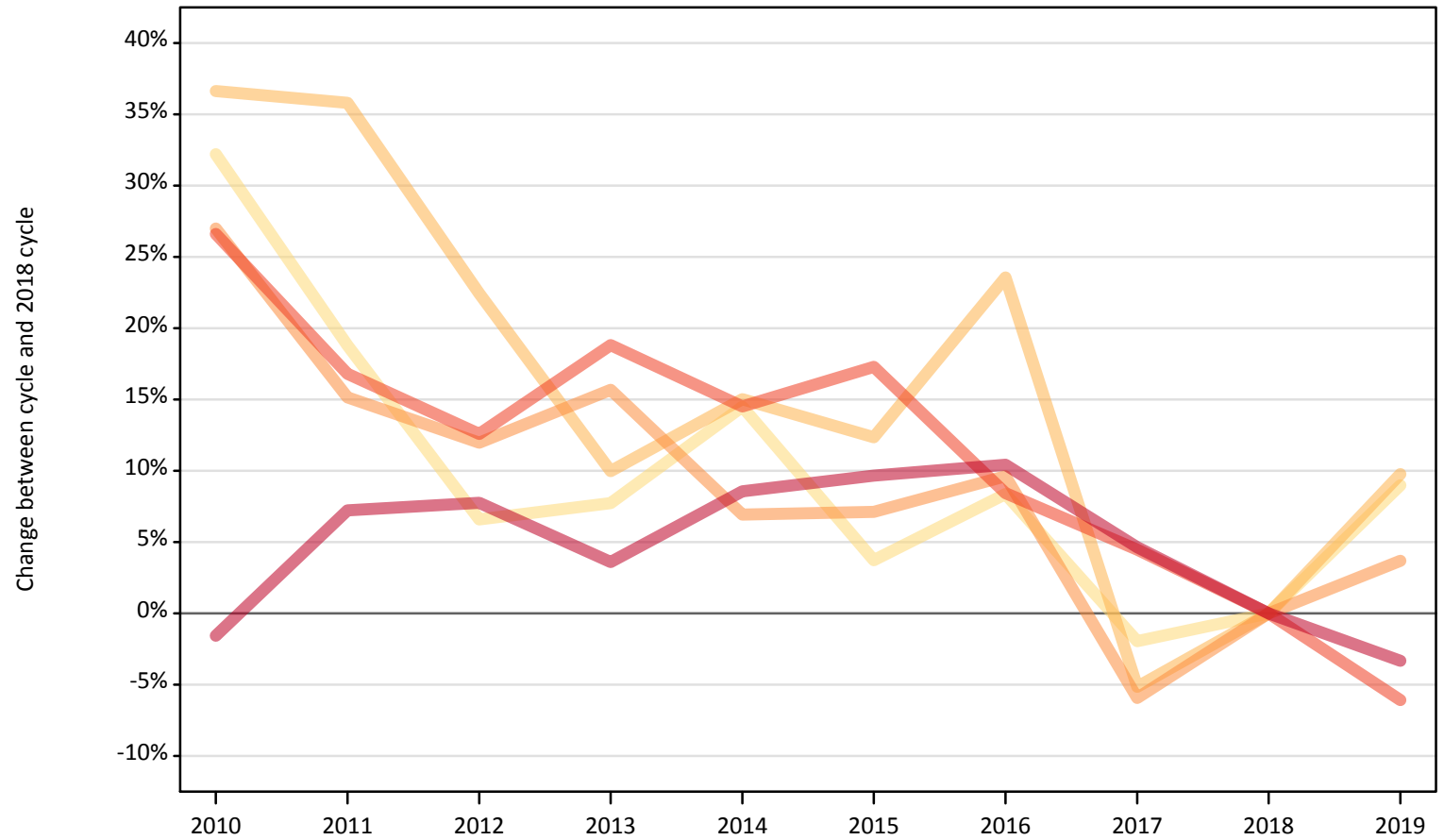
Difference between cycle and 2018 cycle

Domicile and number of applications made by applicant		2010	2011	2012	2013	2014	2015	2016	2017	2018	2019
Scotland	1 application	19%	2%	-11%	-7%	-10%	4%	0%	-9%	0%	3%
	2 applications	6%	-4%	-13%	-16%	-18%	2%	-2%	-4%	0%	-1%
	3 applications	-3%	-12%	-19%	-17%	-22%	-3%	-3%	-3%	0%	-4%
	4 applications	3%	3%	-7%	-9%	-6%	-0%	2%	1%	0%	-6%
	5 applications	-25%	-17%	-13%	-11%	-6%	0%	2%	1%	0%	-4%
	All	-14%	-11%	-13%	-11%	-9%	0%	1%	-1%	0%	-3%

Note: The percentage change is not recorded in the above table for groups with fewer than 10 applicants in that cycle or in the 2018 cycle.

D.4.16 Applicants by domicile and number of applications made : Wales
Difference between cycle and 2018 cycle

- 1 application
- 2 applications
- 3 applications
- 4 applications
- 5 applications



Note: The percentage change is not plotted in the above chart for groups with fewer than 500 applications in any one cycle.

D.4.17 Applicants by domicile and number of applications made : Wales

Domicile and number of applications made by applicant		2010	2011	2012	2013	2014	2015	2016	2017	2018	2019
Wales	1 application	2,310	2,070	1,860	1,880	2,000	1,810	1,890	1,710	1,750	1,900
	2 applications	1,330	1,320	1,190	1,070	1,120	1,090	1,200	920	970	1,070
	3 applications	1,890	1,710	1,660	1,720	1,590	1,590	1,630	1,400	1,490	1,540
	4 applications	2,770	2,560	2,470	2,600	2,510	2,570	2,380	2,290	2,190	2,060
	5 applications	12,510	13,630	13,700	13,170	13,800	13,940	14,030	13,300	12,710	12,290
	All	20,810	21,290	20,880	20,440	21,010	21,000	21,130	19,620	19,100	18,850

D.4.18 Applicants by domicile and number of applications made : Wales

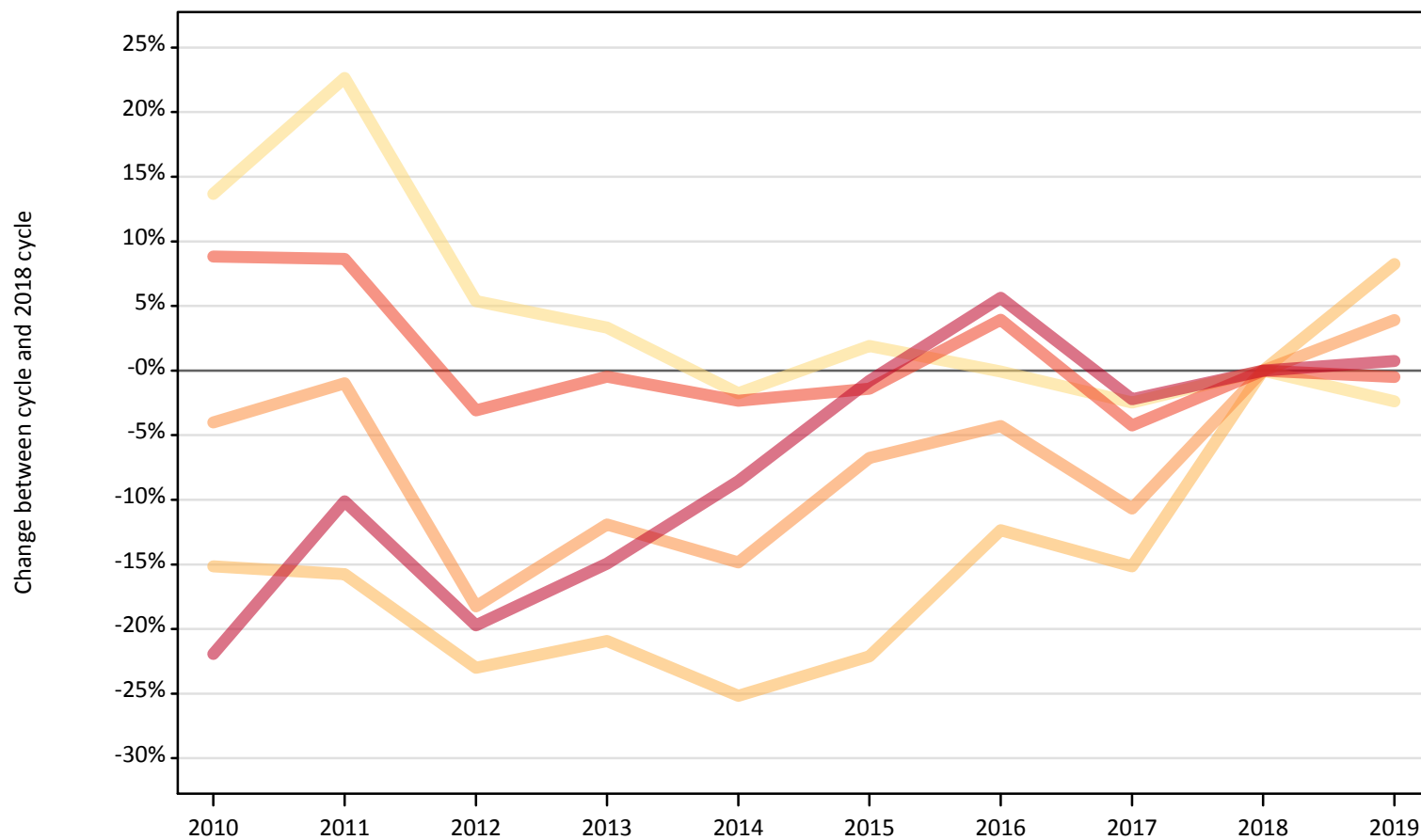
Difference between cycle and 2018 cycle

Domicile and number of applications made by applicant		2010	2011	2012	2013	2014	2015	2016	2017	2018	2019
Wales	1 application	32%	19%	7%	8%	14%	4%	8%	-2%	0%	9%
	2 applications	37%	36%	22%	10%	15%	12%	24%	-5%	0%	10%
	3 applications	27%	15%	12%	16%	7%	7%	10%	-6%	0%	4%
	4 applications	27%	17%	13%	19%	15%	17%	8%	4%	0%	-6%
	5 applications	-2%	7%	8%	4%	9%	10%	10%	5%	0%	-3%
	All	9%	11%	9%	7%	10%	10%	11%	3%	0%	-1%

Note: The percentage change is not recorded in the above table for groups with fewer than 10 applicants in that cycle or in the 2018 cycle.

D.4.19 Applicants by domicile and number of applications made : EU (excluding UK)
Difference between cycle and 2018 cycle

- 1 application
- 2 applications
- 3 applications
- 4 applications
- 5 applications



Note: The percentage change is not plotted in the above chart for groups with fewer than 500 applications in any one cycle.

D.4.20 Applicants by domicile and number of applications made : EU (excluding UK)

Domicile and number of applications made by applicant		2010	2011	2012	2013	2014	2015	2016	2017	2018	2019
EU (excluding UK)	1 application	3,380	3,650	3,140	3,080	2,930	3,030	2,980	2,900	2,980	2,910
	2 applications	1,520	1,510	1,380	1,420	1,340	1,400	1,570	1,520	1,800	1,940
	3 applications	1,860	1,920	1,590	1,710	1,650	1,810	1,860	1,730	1,940	2,020
	4 applications	3,670	3,660	3,270	3,360	3,290	3,330	3,510	3,230	3,370	3,360
	5 applications	26,090	30,040	26,830	28,430	30,560	33,150	35,310	32,680	33,420	33,670
	All	36,530	40,790	36,210	37,990	39,780	42,720	45,220	42,070	43,510	43,890

D.4.21 Applicants by domicile and number of applications made : EU (excluding UK)

Difference between cycle and 2018 cycle

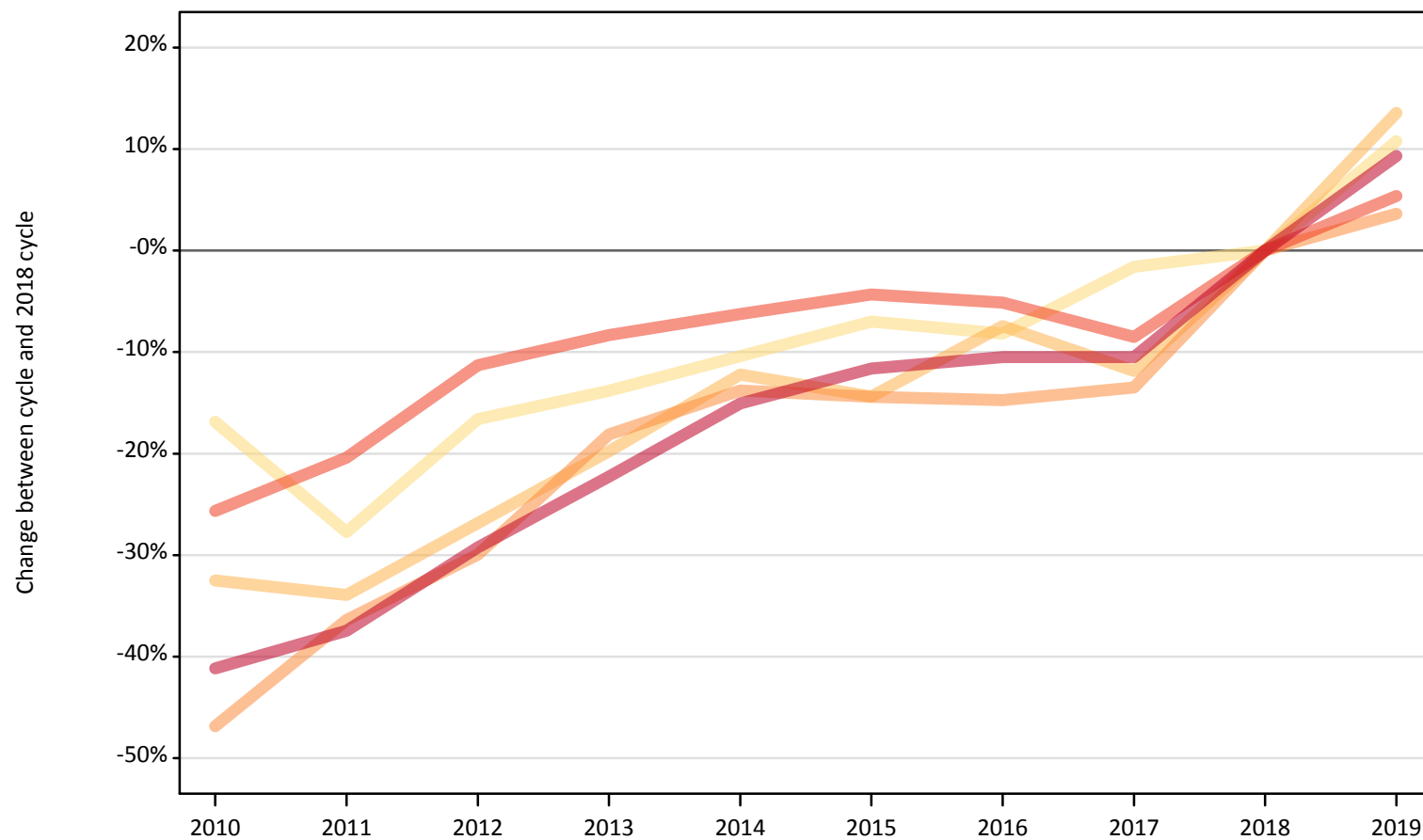
Domicile and number of applications made by applicant		2010	2011	2012	2013	2014	2015	2016	2017	2018	2019
EU (excluding UK)	1 application	14%	23%	5%	3%	-2%	2%	-0%	-2%	0%	-2%
	2 applications	-15%	-16%	-23%	-21%	-25%	-22%	-12%	-15%	0%	8%
	3 applications	-4%	-1%	-18%	-12%	-15%	-7%	-4%	-11%	0%	4%
	4 applications	9%	9%	-3%	-0%	-2%	-1%	4%	-4%	0%	-1%
	5 applications	-22%	-10%	-20%	-15%	-9%	-1%	6%	-2%	0%	1%
	All	-16%	-6%	-17%	-13%	-9%	-2%	4%	-3%	0%	1%

Note: The percentage change is not recorded in the above table for groups with fewer than 10 applicants in that cycle or in the 2018 cycle.

D.4.22 Applicants by domicile and number of applications made : Not EU

Difference between cycle and 2018 cycle

- 1 application
- 2 applications
- 3 applications
- 4 applications
- 5 applications



Note: The percentage change is not plotted in the above chart for groups with fewer than 500 applications in any one cycle.

D.4.23 Applicants by domicile and number of applications made : Not EU

Domicile and number of applications made by applicant		2010	2011	2012	2013	2014	2015	2016	2017	2018	2019
Not EU	1 application	3,220	2,800	3,230	3,340	3,470	3,610	3,560	3,820	3,880	4,300
	2 applications	1,190	1,160	1,290	1,410	1,550	1,510	1,630	1,550	1,760	2,000
	3 applications	1,510	1,810	1,990	2,330	2,450	2,440	2,430	2,460	2,850	2,950
	4 applications	3,170	3,390	3,780	3,910	4,000	4,080	4,040	3,900	4,260	4,490
	5 applications	26,890	28,590	32,340	35,520	38,820	40,390	40,900	40,900	45,700	49,960
	All	35,980	37,760	42,640	46,510	50,290	52,020	52,560	52,630	58,450	63,690

D.4.24 Applicants by domicile and number of applications made : Not EU

Difference between cycle and 2018 cycle

Domicile and number of applications made by applicant		2010	2011	2012	2013	2014	2015	2016	2017	2018	2019
Not EU	1 application	-17%	-28%	-17%	-14%	-10%	-7%	-8%	-2%	0%	11%
	2 applications	-32%	-34%	-27%	-20%	-12%	-14%	-7%	-12%	0%	14%
	3 applications	-47%	-36%	-30%	-18%	-14%	-14%	-15%	-13%	0%	4%
	4 applications	-26%	-20%	-11%	-8%	-6%	-4%	-5%	-9%	0%	5%
	5 applications	-41%	-37%	-29%	-22%	-15%	-12%	-10%	-10%	0%	9%
	All	-38%	-35%	-27%	-20%	-14%	-11%	-10%	-10%	0%	9%

Note: The percentage change is not recorded in the above table for groups with fewer than 10 applicants in that cycle or in the 2018 cycle.

D.4.25 Technical notes and definitions

Applicants have been able to submit applications for all 2019 courses since early September.

Applicants who submit their applications to UCAS by the January deadline are considered as 'on time' applicants for the large majority of courses offered through UCAS.

This statistical release covers all Main Scheme applicants who submit their applications to UCAS by the January deadline, including those who have applied for courses with a 15 October deadline. Counts of RPAs (records of prior acceptance) are not included.

Counts of the number of applicants reported have been rounded to the nearest 10 applicants, this may result in instances where totals do not equal the sum of the components. Proportional changes have been rounded to the nearest whole percentage point.

In 2009, the Canary Islands classification changed from Not EU to EU (excluding UK). In order to present an accurate time series, the Canary Islands have been consistently classified as EU (excluding UK). This will result in differences with data published prior to 2010.

Age

This statistical release uses country-specific age definitions which align with the cut off points for school/college cohorts within the different administrations of the UK. For England and Wales ages are defined on the 31 August, for Northern Ireland on the 1 July and for Scotland on the 28 February the following year. Defining ages in this way matches the assignment of children to school cohorts. For applicants outside of the UK the cohort cut off for England and Wales has been used.

Applicant

A person who has made an application in the UCAS system during the cycle reported (including applications for deferred entry). Records of prior acceptance (RPAs) are excluded.

Application

An application to a course at a provider made by an applicant in the UCAS main scheme. Applicants may make up to five main scheme applications.

Country of provider

An applicant may be counted once for each provider country they have applied to in the main scheme. If an applicant has applied to providers in multiple countries then the applicant is counted once within each country of provider applied to.

Domicile

Declared area of permanent residence. The Channel Islands and the Isle of Man have been assigned as 'Not EU'.

Ethnic group

High level grouping of ethnic origin as declared by the applicant: 'Asian', 'Black', 'Mixed', 'White', 'Other', 'Unknown'.

First time applicant

An applicant that did not apply to the UCAS scheme in the previous cycle.

Main scheme

The main UCAS application scheme through which up to five providers/courses can be applied to. This opens in September and closes to new applications on 30 June the following year.

Reapplicant

An applicant that applied to the UCAS scheme in the previous cycle.

Sex

As declared by the applicant.

SIMD 2016

Scottish Index of Multiple Deprivation identifies small area concentrations of multiple deprivation across all of Scotland, providing a relative measure of deprivation among small areas (data zones). In this report, the SIMD 2016 has been used to group areas in each year in the times series.

POLAR4

Developed by HEFCE and classifies small areas across the UK into five groups, according to their level of young participation in HE. Each of these groups represents around 20 per cent of young people, and is ranked from quintile 1 (areas with the lowest young participation rates, considered as the most disadvantaged) to quintile 5 (highest young participation rates, considered most advantaged). POLAR4 is the most recent version of the POLAR classification, and is available for the first time in UCAS reporting since its launch in 2017.

Tariff Group of provider

Providers are grouped as higher, medium or lower tariff based on their average levels of attainment of their accepted applicants (summarised through UCAS Tariff points) in recent cycles. Each group of providers accounted for around a third of all UK 18 year old acceptances in recent cycles.

Subject group

The JACS3 classification used to classify courses into subject groups. With the introduction of HECoS for the 2019 cycle, new courses that were classified using HECoS instead of JACS have been allocated modelled JACS3 values.

Subject group (HECoS)

The CAH classification used to categorise HECoS course subject codes into subject groups. A course may be associated with up to 5 individual subject codes and their respective percentage weight. For this analysis, application totals for subject groups have been calculated by apportioning course applications as weighted by subject group.