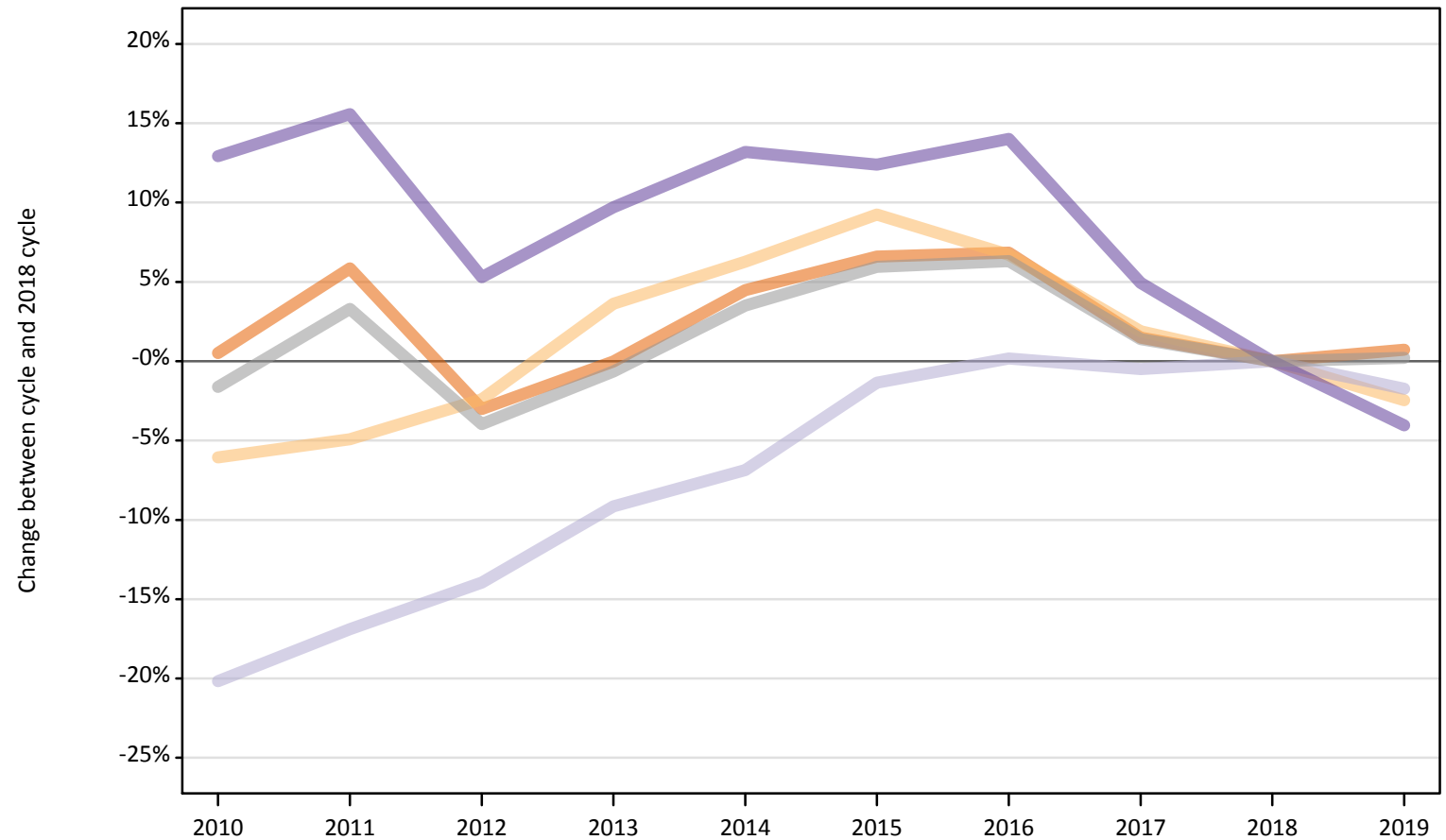


# January Deadline Analysis: Providers

## Applications by country and type of provider at the 15 January deadline

### D.5.1 Applications by domicile and country of provider : All domiciles Difference between cycle and 2018 cycle

- England
- Northern Ireland
- Scotland
- Wales
- UK



Note: The percentage change is not plotted in the above chart for groups with fewer than 500 applications in any one cycle.

### D.5.2 Applications by domicile and country of provider : All domiciles

Domicile of applicant and country of provider		2010	2011	2012	2013	2014	2015	2016	2017	2018	2019
All domiciles	England	2,046,590	2,155,350	1,975,000	2,036,020	2,127,670	2,170,680	2,175,610	2,066,600	2,036,290	2,051,130
	Northern Ireland	53,590	54,250	55,690	59,120	60,640	62,330	60,880	58,130	57,060	55,650
	Scotland	228,850	238,260	246,680	260,440	266,990	282,760	287,180	285,210	286,660	281,670
	Wales	97,800	100,100	91,200	95,020	98,040	97,350	98,740	90,890	86,610	83,110
	UK	2,426,830	2,547,960	2,368,570	2,450,590	2,553,340	2,613,120	2,622,410	2,500,830	2,466,620	2,471,570

### D.5.3 Applications by domicile and country of provider : All domiciles

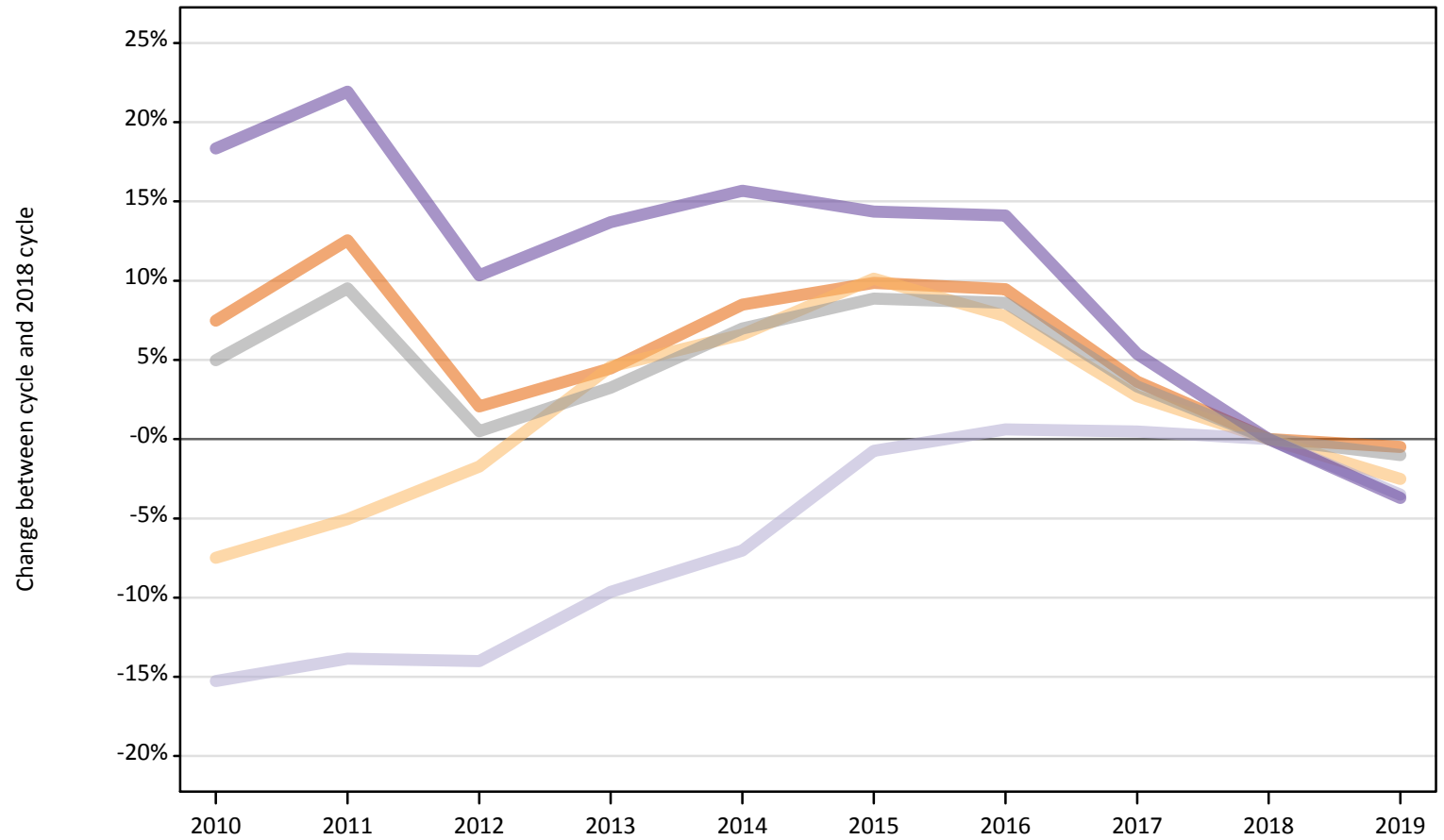
Difference between cycle and 2018 cycle

Domicile of applicant and country of provider		2010	2011	2012	2013	2014	2015	2016	2017	2018	2019
All domiciles	England	1%	6%	-3%	-0%	4%	7%	7%	1%	0%	1%
	Northern Ireland	-6%	-5%	-2%	4%	6%	9%	7%	2%	0%	-2%
	Scotland	-20%	-17%	-14%	-9%	-7%	-1%	0%	-1%	0%	-2%
	Wales	13%	16%	5%	10%	13%	12%	14%	5%	0%	-4%
	UK	-2%	3%	-4%	-1%	4%	6%	6%	1%	0%	0%

Note: The percentage change is not recorded in the above table for groups with fewer than 10 applicants in that cycle or in the 2018 cycle.

**D.5.4 Applications by domicile and country of provider : UK**  
Difference between cycle and 2018 cycle

- England
- Northern Ireland
- Scotland
- Wales
- UK



Note: The percentage change is not plotted in the above chart for groups with fewer than 500 applications in any one cycle.

### D.5.5 Applications by domicile and country of provider : UK

Domicile of applicant and country of provider		2010	2011	2012	2013	2014	2015	2016	2017	2018	2019
UK	England	1,785,810	1,869,860	1,695,680	1,735,650	1,802,440	1,825,450	1,818,660	1,721,740	1,661,540	1,653,360
	Northern Ireland	48,760	50,040	51,800	55,120	56,190	58,050	56,800	54,130	52,710	51,380
	Scotland	188,420	191,580	191,230	200,940	206,760	220,730	223,730	223,460	222,370	214,600
	Wales	89,400	92,100	83,350	85,880	87,380	86,390	86,200	79,610	75,540	72,740
	UK	2,112,400	2,203,580	2,022,060	2,077,580	2,152,760	2,190,610	2,185,390	2,078,940	2,012,160	1,992,090

### D.5.6 Applications by domicile and country of provider : UK

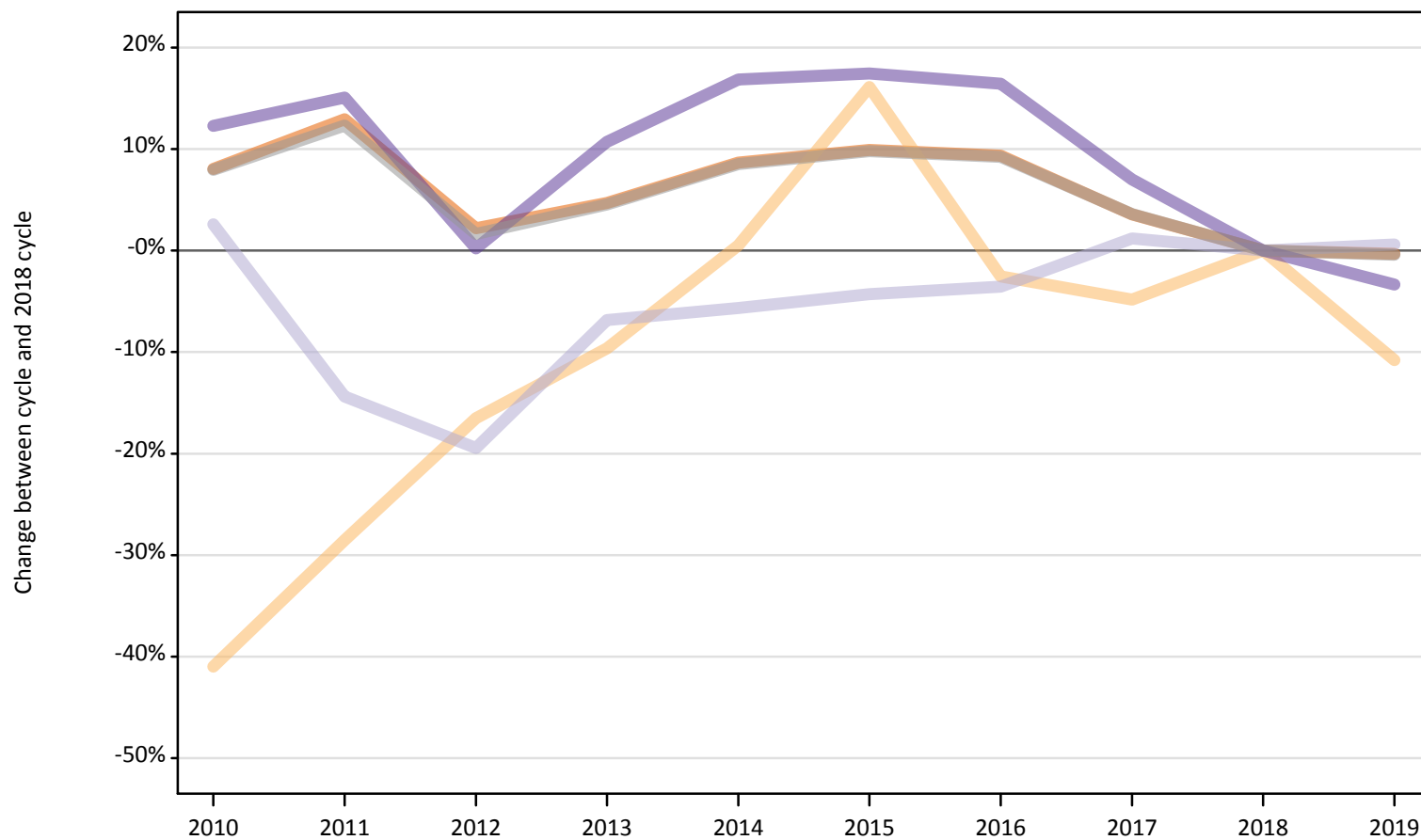
Difference between cycle and 2018 cycle

Domicile of applicant and country of provider		2010	2011	2012	2013	2014	2015	2016	2017	2018	2019
UK	England	7%	13%	2%	4%	8%	10%	9%	4%	0%	-0%
	Northern Ireland	-7%	-5%	-2%	5%	7%	10%	8%	3%	0%	-3%
	Scotland	-15%	-14%	-14%	-10%	-7%	-1%	1%	0%	0%	-3%
	Wales	18%	22%	10%	14%	16%	14%	14%	5%	0%	-4%
	UK	5%	10%	0%	3%	7%	9%	9%	3%	0%	-1%

Note: The percentage change is not recorded in the above table for groups with fewer than 10 applicants in that cycle or in the 2018 cycle.

**D.5.7 Applications by domicile and country of provider : England**  
Difference between cycle and 2018 cycle

- England
- Northern Ireland
- Scotland
- Wales
- UK



Note: The percentage change is not plotted in the above chart for groups with fewer than 500 applications in any one cycle.

### D.5.8 Applications by domicile and country of provider : England

Domicile of applicant and country of provider		2010	2011	2012	2013	2014	2015	2016	2017	2018	2019
England	England	1,708,350	1,785,800	1,616,210	1,655,250	1,718,100	1,738,000	1,729,150	1,637,710	1,581,280	1,576,120
	Northern Ireland	1,530	1,850	2,160	2,340	2,600	3,010	2,520	2,460	2,590	2,310
	Scotland	38,750	32,330	30,420	35,190	35,630	36,140	36,420	38,210	37,760	37,990
	Wales	47,370	48,560	42,290	46,720	49,300	49,560	49,130	45,150	42,190	40,780
	UK	1,796,000	1,868,540	1,691,080	1,739,490	1,805,630	1,826,710	1,817,220	1,723,530	1,663,830	1,657,200

### D.5.9 Applications by domicile and country of provider : England

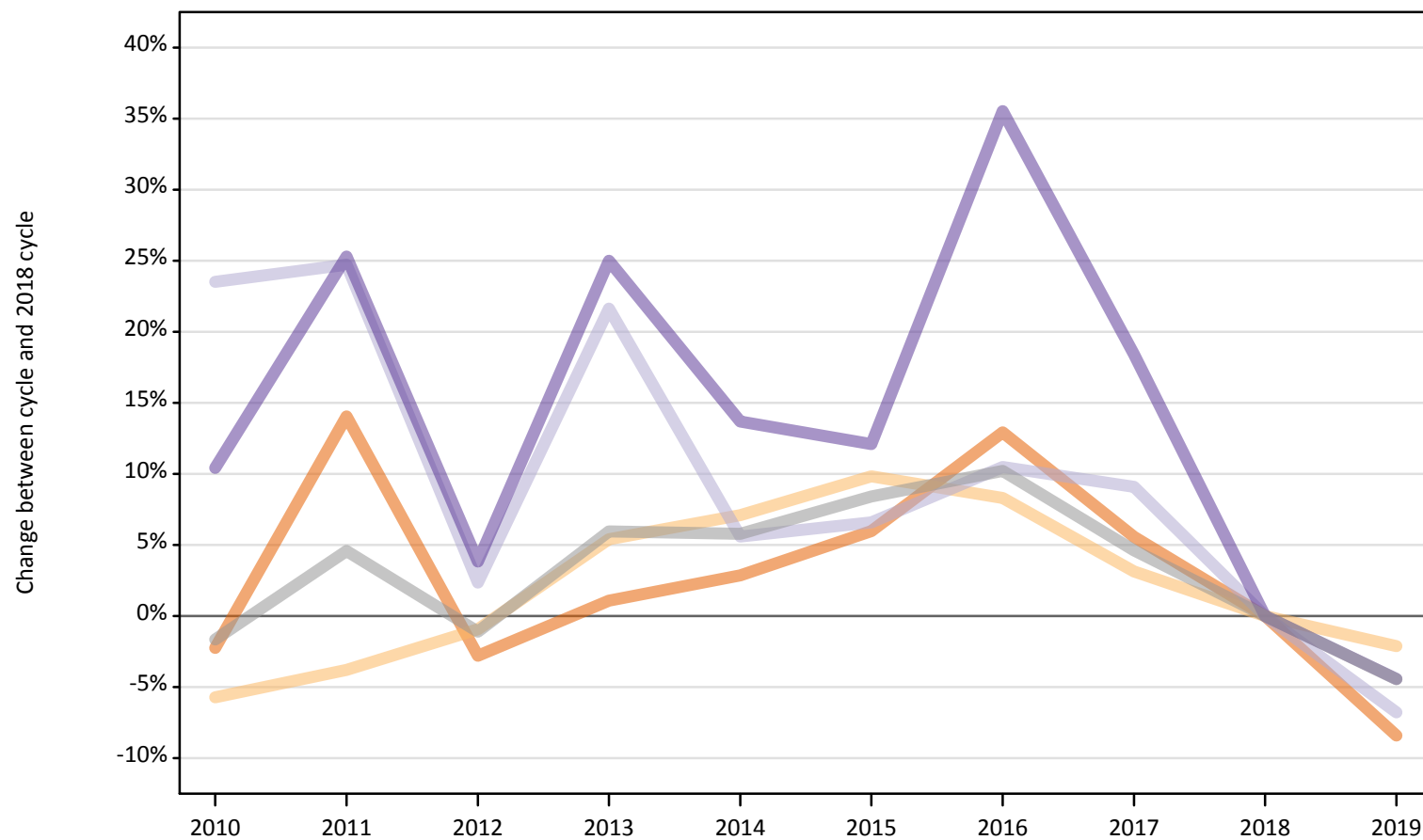
Difference between cycle and 2018 cycle

Domicile of applicant and country of provider		2010	2011	2012	2013	2014	2015	2016	2017	2018	2019
England	England	8%	13%	2%	5%	9%	10%	9%	4%	0%	-0%
	Northern Ireland	-41%	-29%	-16%	-10%	1%	16%	-3%	-5%	0%	-11%
	Scotland	3%	-14%	-19%	-7%	-6%	-4%	-4%	1%	0%	1%
	Wales	12%	15%	0%	11%	17%	17%	16%	7%	0%	-3%
	UK	8%	12%	2%	5%	9%	10%	9%	4%	0%	-0%

Note: The percentage change is not recorded in the above table for groups with fewer than 10 applicants in that cycle or in the 2018 cycle.

**D.5.10 Applications by domicile and country of provider : Northern Ireland**  
Difference between cycle and 2018 cycle

- England
- Northern Ireland
- Scotland
- Wales
- UK



Note: The percentage change is not plotted in the above chart for groups with fewer than 500 applications in any one cycle.

### D.5.11 Applications by domicile and country of provider : Northern Ireland

Domicile of applicant and country of provider		2010	2011	2012	2013	2014	2015	2016	2017	2018	2019
Northern Ireland	England	24,010	28,000	23,870	24,820	25,260	26,020	27,730	25,920	24,550	22,490
	Northern Ireland	46,970	47,930	49,360	52,510	53,360	54,720	53,950	51,390	49,820	48,760
	Scotland	10,060	10,160	8,330	9,900	8,600	8,680	9,000	8,880	8,140	7,590
	Wales	1,120	1,270	1,060	1,270	1,160	1,140	1,380	1,200	1,020	970
	UK	82,160	87,360	82,610	88,500	88,370	90,550	92,060	87,390	83,530	79,810

### D.5.12 Applications by domicile and country of provider : Northern Ireland

Difference between cycle and 2018 cycle

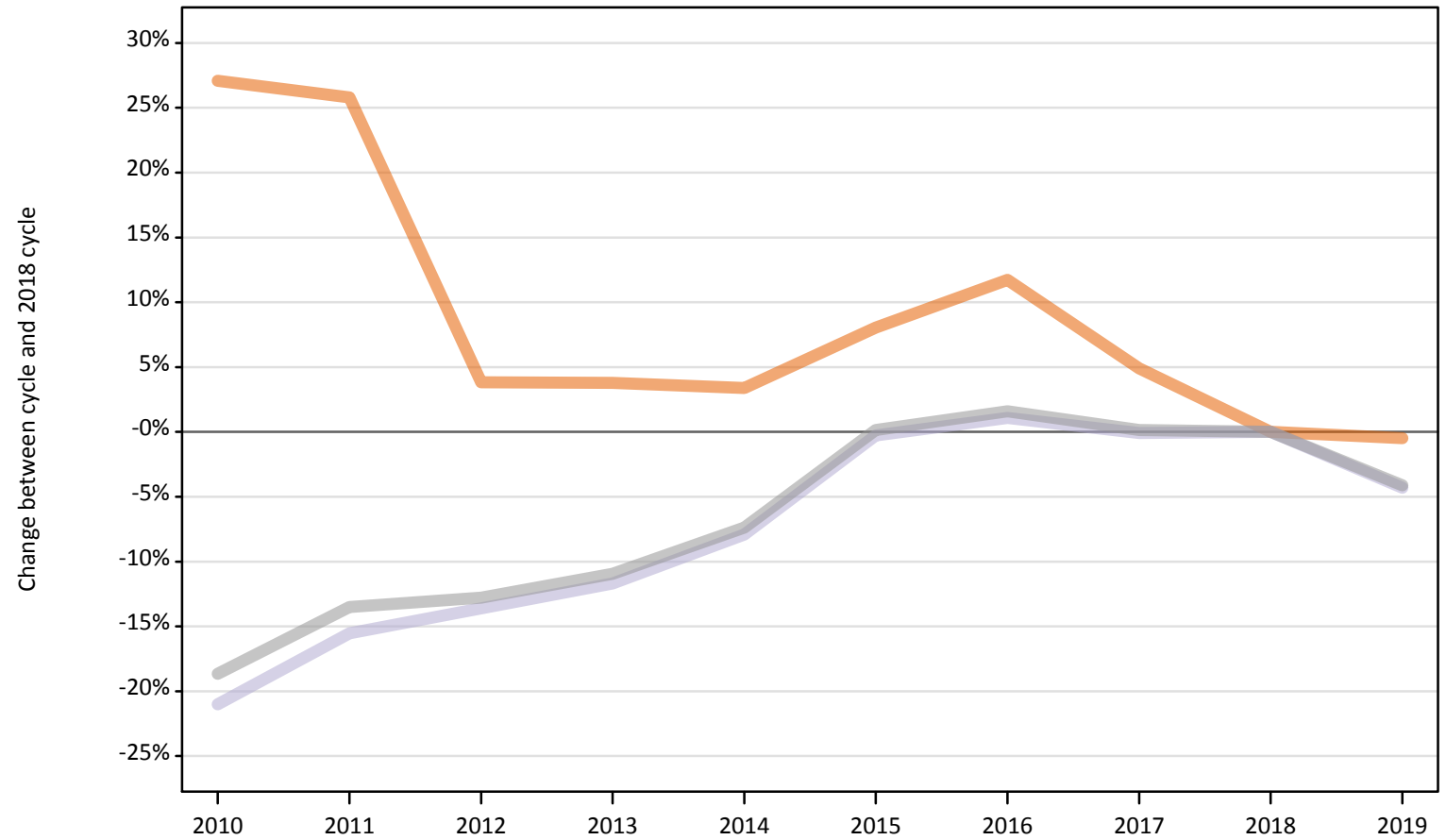
Domicile of applicant and country of provider		2010	2011	2012	2013	2014	2015	2016	2017	2018	2019
Northern Ireland	England	-2%	14%	-3%	1%	3%	6%	13%	6%	0%	-8%
	Northern Ireland	-6%	-4%	-1%	5%	7%	10%	8%	3%	0%	-2%
	Scotland	24%	25%	2%	22%	6%	7%	11%	9%	0%	-7%
	Wales	10%	25%	4%	25%	14%	12%	36%	18%	0%	-4%
	UK	-2%	5%	-1%	6%	6%	8%	10%	5%	0%	-4%

Note: The percentage change is not recorded in the above table for groups with fewer than 10 applicants in that cycle or in the 2018 cycle.



**D.5.13 Applications by domicile and country of provider : Scotland**  
Difference between cycle and 2018 cycle

- England
- Northern Ireland
- Scotland
- Wales
- UK



Note: The percentage change is not plotted in the above chart for groups with fewer than 500 applications in any one cycle.

#### D.5.14 Applications by domicile and country of provider : Scotland

Domicile of applicant and country of provider		2010	2011	2012	2013	2014	2015	2016	2017	2018	2019
Scotland	England	10,950	10,840	8,950	8,940	8,910	9,310	9,630	9,040	8,620	8,570
	Northern Ireland	190	190	190	190	140	220	220	180	180	190
	Scotland	138,490	148,100	151,430	154,830	161,480	174,880	177,220	175,200	175,340	167,810
	Wales	350	350	230	210	220	220	210	200	220	180
	UK	149,980	159,480	160,790	164,170	170,750	184,630	187,270	184,620	184,350	176,760

#### D.5.15 Applications by domicile and country of provider : Scotland

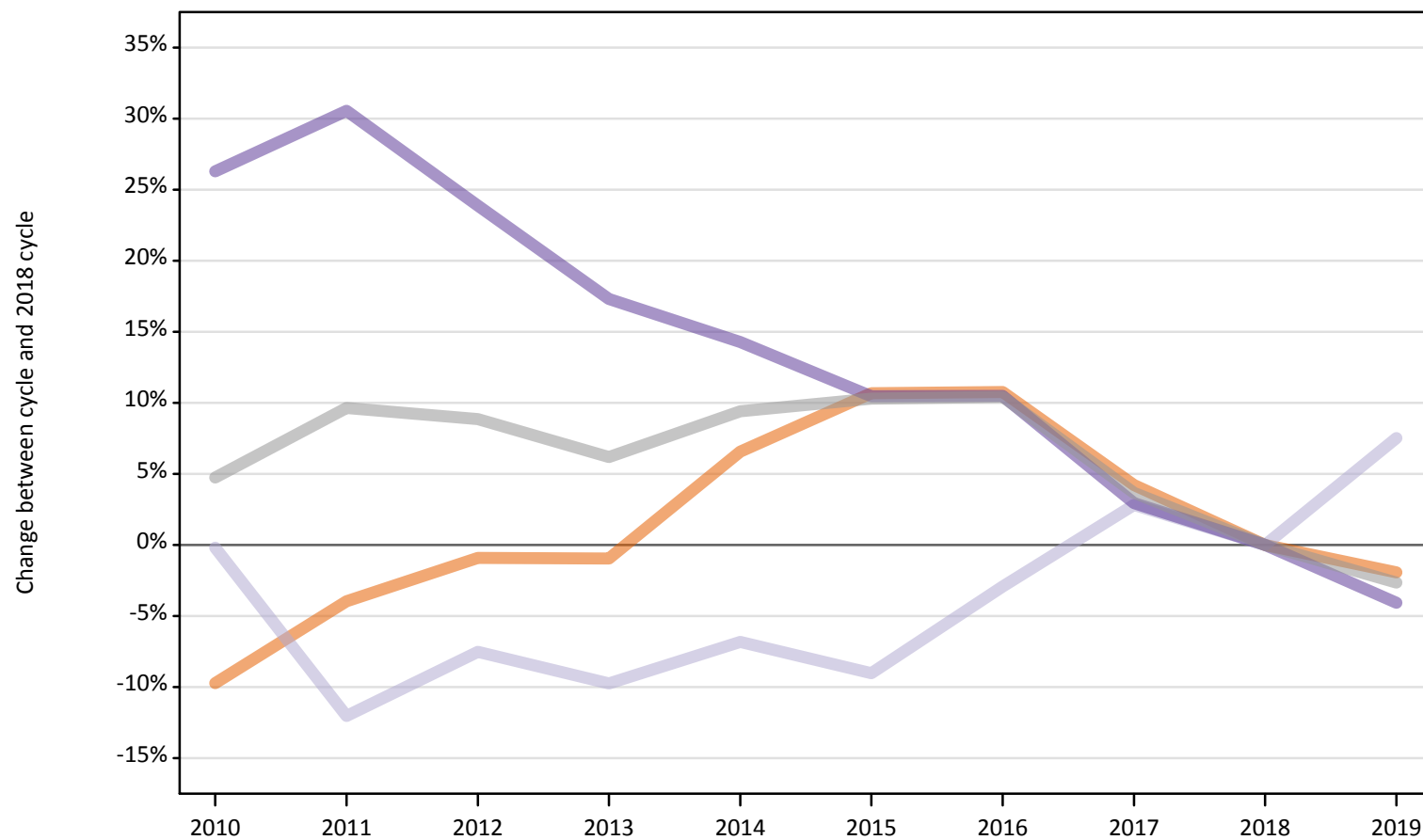
Difference between cycle and 2018 cycle

Domicile of applicant and country of provider		2010	2011	2012	2013	2014	2015	2016	2017	2018	2019
Scotland	England	27%	26%	4%	4%	3%	8%	12%	5%	0%	-0%
	Northern Ireland	2%	4%	4%	1%	-24%	18%	21%	-1%	0%	5%
	Scotland	-21%	-16%	-14%	-12%	-8%	-0%	1%	-0%	0%	-4%
	Wales	64%	63%	5%	-1%	2%	2%	-3%	-8%	0%	-16%
	UK	-19%	-13%	-13%	-11%	-7%	0%	2%	0%	0%	-4%

Note: The percentage change is not recorded in the above table for groups with fewer than 10 applicants in that cycle or in the 2018 cycle.

**D.5.16 Applications by domicile and country of provider : Wales**  
Difference between cycle and 2018 cycle

- England
- Northern Ireland
- Scotland
- Wales
- UK



Note: The percentage change is not plotted in the above chart for groups with fewer than 500 applications in any one cycle.

### D.5.17 Applications by domicile and country of provider : Wales

Domicile of applicant and country of provider		2010	2011	2012	2013	2014	2015	2016	2017	2018	2019
Wales	England	42,510	45,220	46,660	46,640	50,180	52,120	52,160	49,070	47,090	46,180
	Northern Ireland	70	70	90	90	90	110	100	100	120	120
	Scotland	1,130	990	1,050	1,020	1,050	1,030	1,100	1,160	1,130	1,220
	Wales	40,560	41,920	39,780	37,680	36,700	35,480	35,480	33,060	32,120	30,810
	UK	84,270	88,210	87,580	85,420	88,020	88,730	88,840	83,400	80,450	78,320

### D.5.18 Applications by domicile and country of provider : Wales

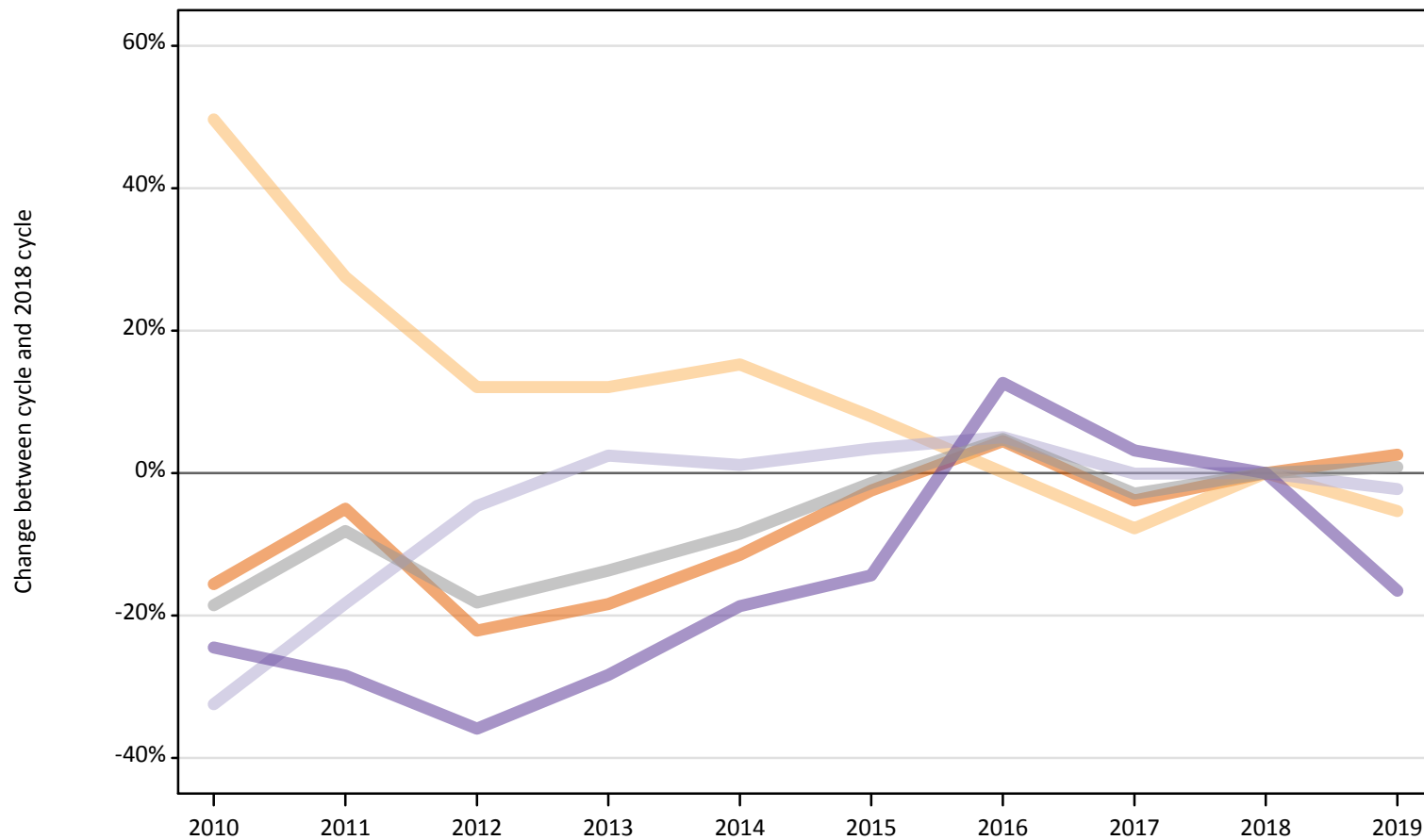
Difference between cycle and 2018 cycle

Domicile of applicant and country of provider		2010	2011	2012	2013	2014	2015	2016	2017	2018	2019
Wales	England	-10%	-4%	-1%	-1%	7%	11%	11%	4%	0%	-2%
	Northern Ireland	-38%	-39%	-22%	-26%	-23%	-7%	-13%	-14%	0%	-1%
	Scotland	-0%	-12%	-8%	-10%	-7%	-9%	-3%	3%	0%	8%
	Wales	26%	31%	24%	17%	14%	10%	10%	3%	0%	-4%
	UK	5%	10%	9%	6%	9%	10%	10%	4%	0%	-3%

Note: The percentage change is not recorded in the above table for groups with fewer than 10 applicants in that cycle or in the 2018 cycle.

**D.5.19 Applications by domicile and country of provider : EU (excluding UK)**  
Difference between cycle and 2018 cycle

- England
- Northern Ireland
- Scotland
- Wales
- UK



Note: The percentage change is not plotted in the above chart for groups with fewer than 500 applications in any one cycle.

#### D.5.20 Applications by domicile and country of provider : EU (excluding UK)

Domicile of applicant and country of provider		2010	2011	2012	2013	2014	2015	2016	2017	2018	2019
EU (excluding UK)	England	119,790	134,810	110,520	115,790	125,650	138,400	148,280	136,460	141,900	145,570
	Northern Ireland	4,380	3,730	3,280	3,280	3,370	3,160	2,930	2,700	2,930	2,770
	Scotland	28,570	34,560	40,330	43,340	42,770	43,740	44,430	42,250	42,290	41,350
	Wales	4,440	4,200	3,770	4,210	4,780	5,030	6,620	6,060	5,870	4,900
	UK	157,170	177,300	157,890	166,620	176,560	190,330	202,250	187,470	192,980	194,590

#### D.5.21 Applications by domicile and country of provider : EU (excluding UK)

Difference between cycle and 2018 cycle

Domicile of applicant and country of provider		2010	2011	2012	2013	2014	2015	2016	2017	2018	2019
EU (excluding UK)	England	-16%	-5%	-22%	-18%	-11%	-2%	4%	-4%	0%	3%
	Northern Ireland	50%	28%	12%	12%	15%	8%	0%	-8%	0%	-5%
	Scotland	-32%	-18%	-5%	2%	1%	3%	5%	-0%	0%	-2%
	Wales	-24%	-28%	-36%	-28%	-19%	-14%	13%	3%	0%	-17%
	UK	-19%	-8%	-18%	-14%	-9%	-1%	5%	-3%	0%	1%

Note: The percentage change is not recorded in the above table for groups with fewer than 10 applicants in that cycle or in the 2018 cycle.

**D.5.22 Applications by domicile and country of provider : Not EU**  
Difference between cycle and 2018 cycle

- England
- Northern Ireland
- Scotland
- Wales
- UK



Note: The percentage change is not plotted in the above chart for groups with fewer than 500 applications in any one cycle.

### D.5.23 Applications by domicile and country of provider : Not EU

Domicile of applicant and country of provider		2010	2011	2012	2013	2014	2015	2016	2017	2018	2019
Not EU	England	140,990	150,680	168,800	184,580	199,580	206,840	208,680	208,390	232,850	252,200
	Northern Ireland	450	480	610	730	1,080	1,120	1,150	1,300	1,420	1,500
	Scotland	11,870	12,120	15,120	16,160	17,460	18,300	19,010	19,510	22,000	25,720
	Wales	3,960	3,790	4,090	4,930	5,890	5,920	5,920	5,230	5,200	5,470
	UK	157,260	167,070	188,620	206,390	224,010	232,180	234,770	234,420	261,480	284,890

### D.5.24 Applications by domicile and country of provider : Not EU

Difference between cycle and 2018 cycle

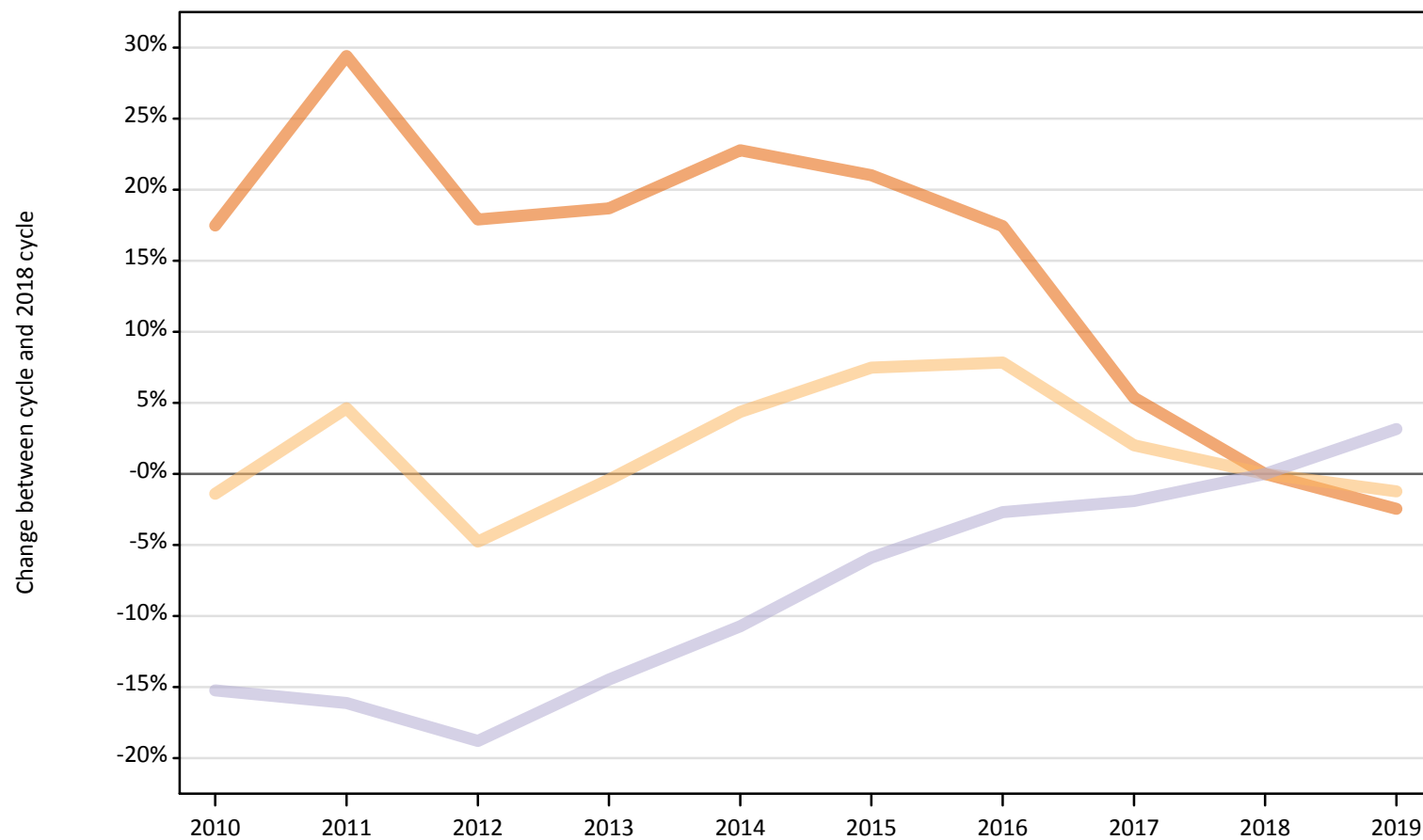
Domicile of applicant and country of provider		2010	2011	2012	2013	2014	2015	2016	2017	2018	2019
Not EU	England	-39%	-35%	-28%	-21%	-14%	-11%	-10%	-11%	0%	8%
	Northern Ireland	-68%	-67%	-57%	-49%	-24%	-21%	-19%	-9%	0%	6%
	Scotland	-46%	-45%	-31%	-27%	-21%	-17%	-14%	-11%	0%	17%
	Wales	-24%	-27%	-21%	-5%	13%	14%	14%	1%	0%	5%
	UK	-40%	-36%	-28%	-21%	-14%	-11%	-10%	-10%	0%	9%

Note: The percentage change is not recorded in the above table for groups with fewer than 10 applicants in that cycle or in the 2018 cycle.



**D.5.25 Applications by domicile and tariff group of provider : All domiciles**  
Difference between cycle and 2018 cycle

- 1. Lower tariff
- 2. Medium tariff
- 3. Higher tariff



Note: The percentage change is not plotted in the above chart for groups with fewer than 500 applications in any one cycle.

#### D.5.26 Applications by domicile and tariff group of provider : All domiciles

Domicile of applicant and tariff group of provider		2010	2011	2012	2013	2014	2015	2016	2017	2018	2019
All domiciles	1. Lower tariff	825,880	909,770	828,870	834,350	863,180	850,820	825,550	740,710	703,030	685,800
	2. Medium tariff	755,420	801,540	729,650	763,120	799,630	823,520	826,280	781,580	766,150	756,810
	3. Higher tariff	845,540	836,650	810,050	853,120	890,530	938,780	970,570	978,540	997,440	1,028,960
	All	2,426,830	2,547,960	2,368,570	2,450,590	2,553,340	2,613,120	2,622,410	2,500,830	2,466,620	2,471,570

#### D.5.27 Applications by domicile and tariff group of provider : All domiciles

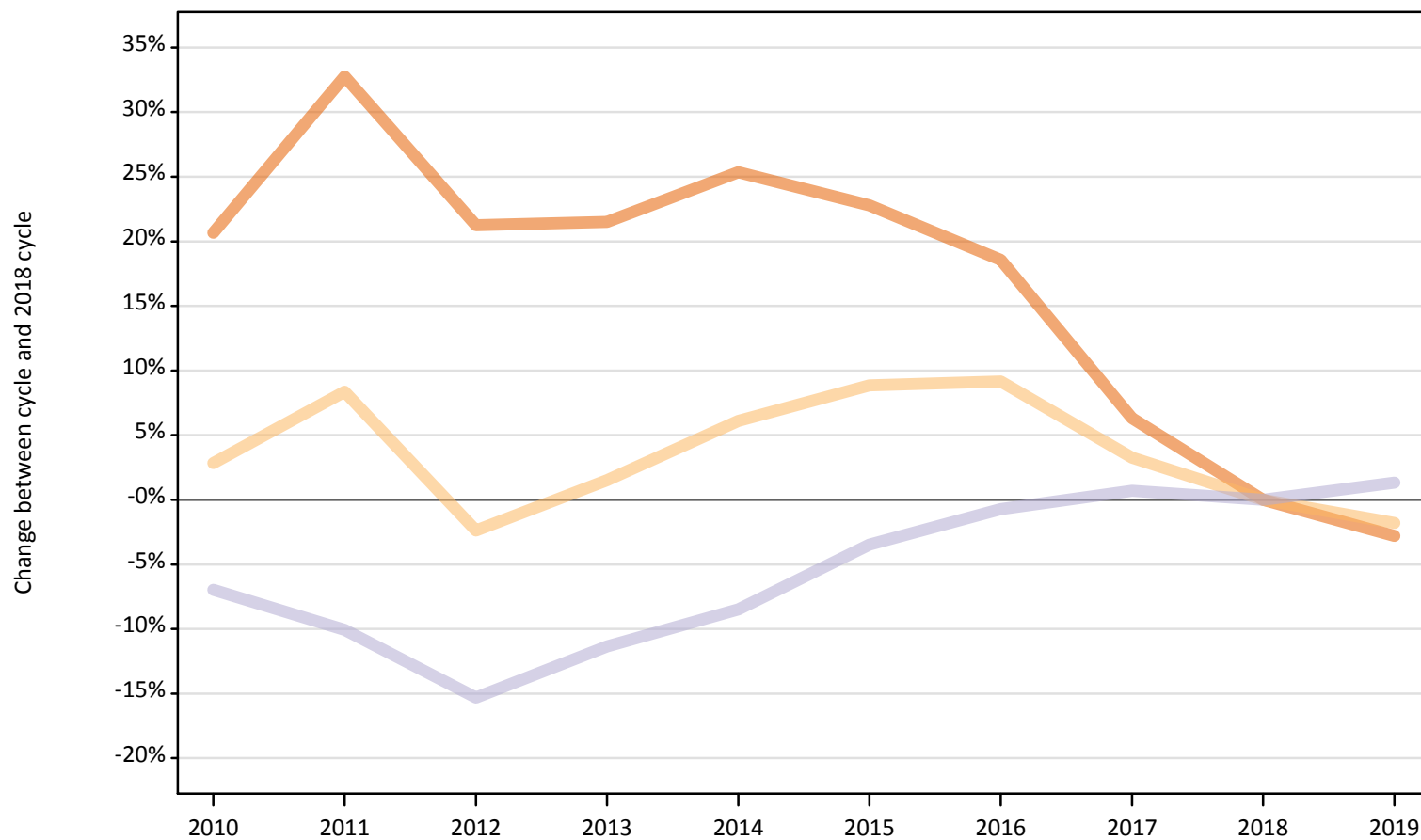
Difference between cycle and 2018 cycle

Domicile of applicant and tariff group of provider		2010	2011	2012	2013	2014	2015	2016	2017	2018	2019
All domiciles	1. Lower tariff	17%	29%	18%	19%	23%	21%	17%	5%	0%	-2%
	2. Medium tariff	-1%	5%	-5%	-0%	4%	7%	8%	2%	0%	-1%
	3. Higher tariff	-15%	-16%	-19%	-14%	-11%	-6%	-3%	-2%	0%	3%
	All	-2%	3%	-4%	-1%	4%	6%	6%	1%	0%	0%

Note: The percentage change is not recorded in the above table for groups with fewer than 10 applicants in that cycle or in the 2018 cycle.

**D.5.28 Applications by domicile and tariff group of provider : UK**  
Difference between cycle and 2018 cycle

- 1. Lower tariff
- 2. Medium tariff
- 3. Higher tariff



Note: The percentage change is not plotted in the above chart for groups with fewer than 500 applications in any one cycle.

### D.5.29 Applications by domicile and tariff group of provider : UK

Domicile of applicant and tariff group of provider		2010	2011	2012	2013	2014	2015	2016	2017	2018	2019
UK	1. Lower tariff	769,280	846,410	772,920	774,580	799,070	782,840	755,910	677,770	637,520	619,680
	2. Medium tariff	674,410	710,670	640,270	665,650	695,820	713,810	715,840	677,230	655,790	643,990
	3. Higher tariff	668,710	646,510	608,880	637,360	657,880	693,960	713,640	723,940	718,850	728,420
	All	2,112,400	2,203,580	2,022,060	2,077,580	2,152,760	2,190,610	2,185,390	2,078,940	2,012,160	1,992,090

### D.5.30 Applications by domicile and tariff group of provider : UK

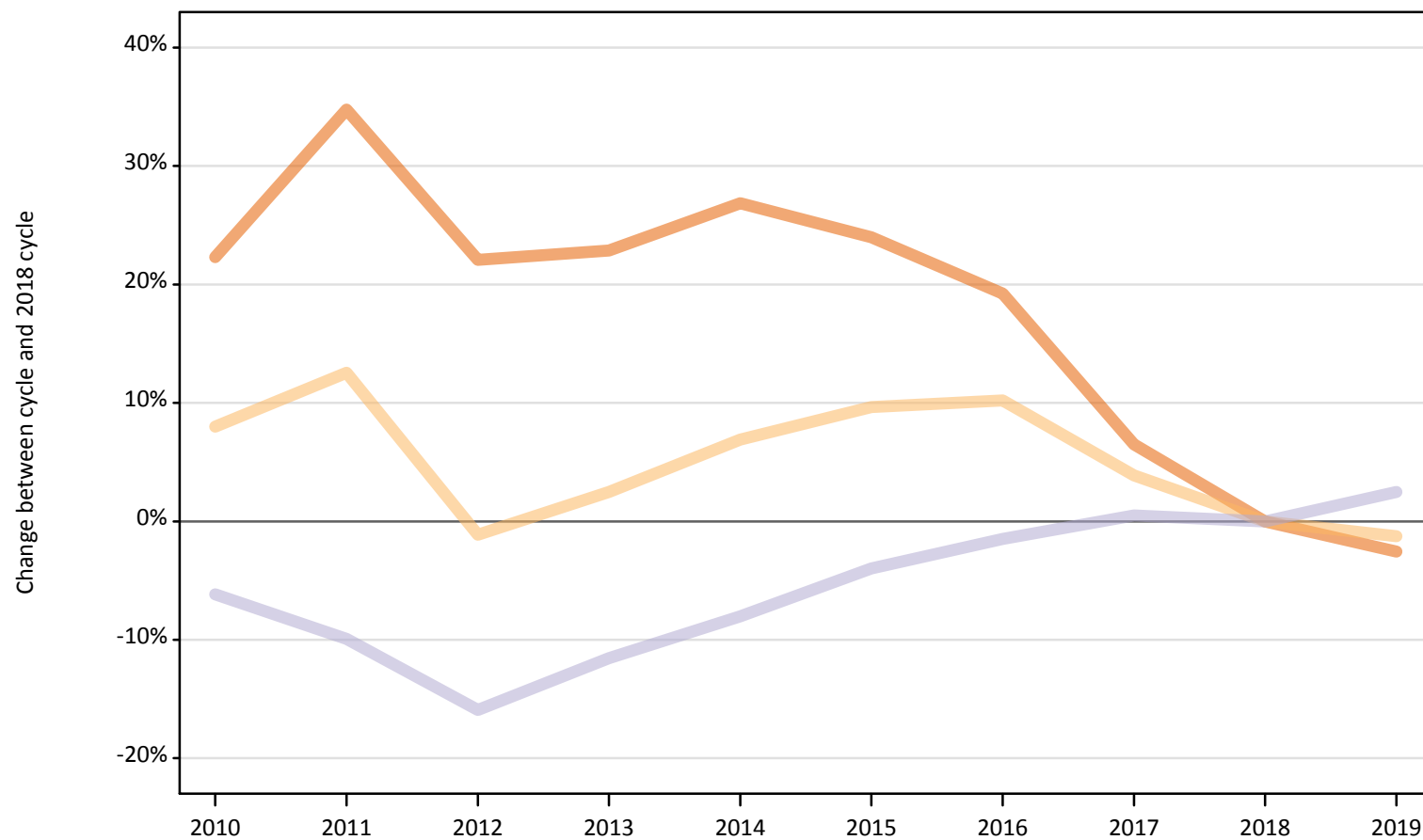
Difference between cycle and 2018 cycle

Domicile of applicant and tariff group of provider		2010	2011	2012	2013	2014	2015	2016	2017	2018	2019
UK	1. Lower tariff	21%	33%	21%	21%	25%	23%	19%	6%	0%	-3%
	2. Medium tariff	3%	8%	-2%	2%	6%	9%	9%	3%	0%	-2%
	3. Higher tariff	-7%	-10%	-15%	-11%	-8%	-3%	-1%	1%	0%	1%
	All	5%	10%	0%	3%	7%	9%	9%	3%	0%	-1%

Note: The percentage change is not recorded in the above table for groups with fewer than 10 applicants in that cycle or in the 2018 cycle.

**D.5.31 Applications by domicile and tariff group of provider : England**  
Difference between cycle and 2018 cycle

- 1. Lower tariff
- 2. Medium tariff
- 3. Higher tariff



Note: The percentage change is not plotted in the above chart for groups with fewer than 500 applications in any one cycle.

### D.5.32 Applications by domicile and tariff group of provider : England

Domicile of applicant and tariff group of provider		2010	2011	2012	2013	2014	2015	2016	2017	2018	2019
England	1. Lower tariff	694,220	764,850	692,820	697,330	720,040	703,630	676,740	604,430	567,580	553,060
	2. Medium tariff	558,310	581,890	511,210	529,820	552,740	566,880	569,800	537,060	517,010	510,530
	3. Higher tariff	543,470	521,800	487,060	512,340	532,850	556,190	570,690	582,040	579,240	593,610
	All	1,796,000	1,868,540	1,691,080	1,739,490	1,805,630	1,826,710	1,817,220	1,723,530	1,663,830	1,657,200

### D.5.33 Applications by domicile and tariff group of provider : England

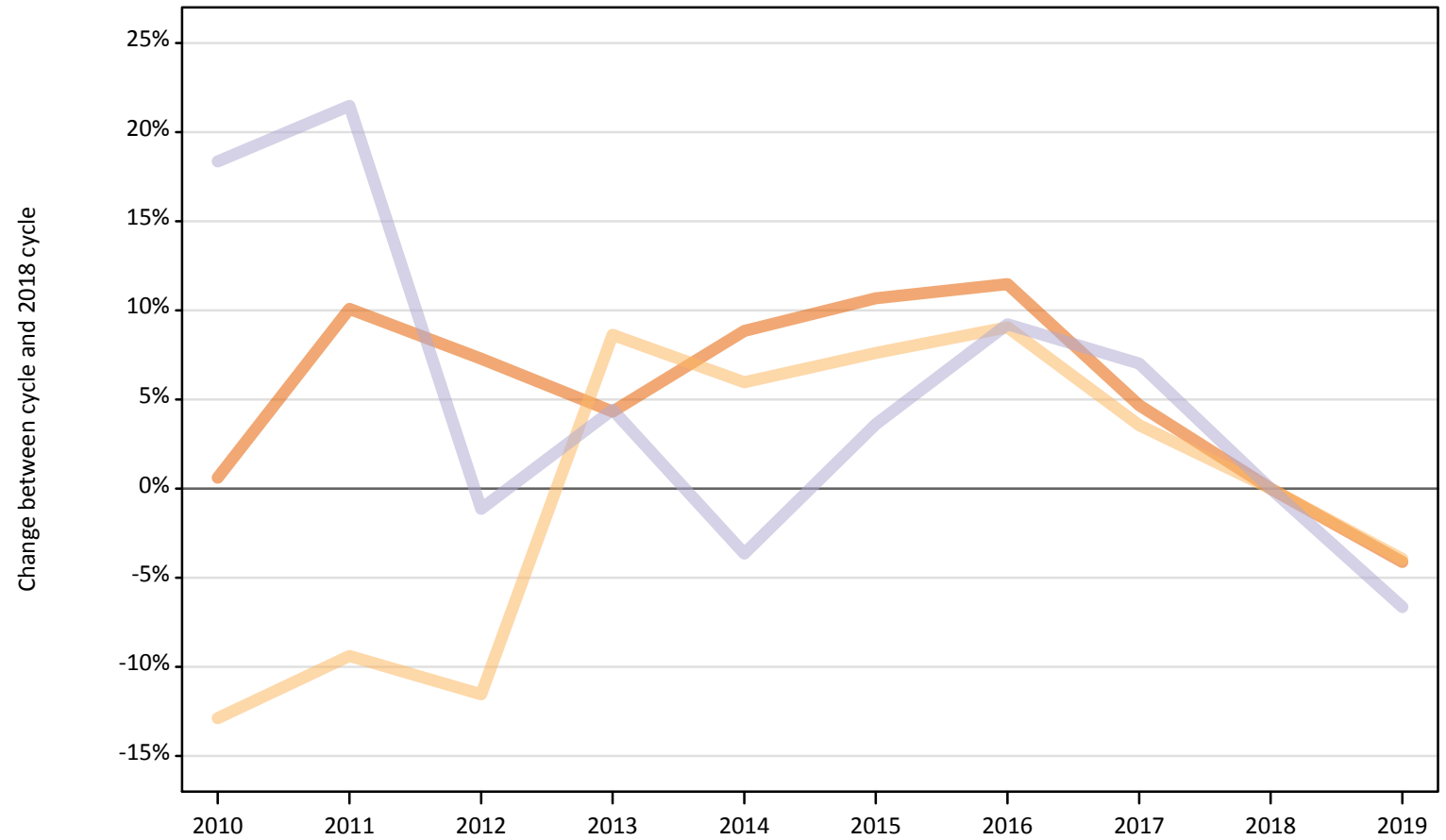
Difference between cycle and 2018 cycle

Domicile of applicant and tariff group of provider		2010	2011	2012	2013	2014	2015	2016	2017	2018	2019
England	1. Lower tariff	22%	35%	22%	23%	27%	24%	19%	6%	0%	-3%
	2. Medium tariff	8%	13%	-1%	2%	7%	10%	10%	4%	0%	-1%
	3. Higher tariff	-6%	-10%	-16%	-12%	-8%	-4%	-1%	0%	0%	2%
	All	8%	12%	2%	5%	9%	10%	9%	4%	0%	-0%

Note: The percentage change is not recorded in the above table for groups with fewer than 10 applicants in that cycle or in the 2018 cycle.

**D.5.34 Applications by domicile and tariff group of provider : Northern Ireland**  
Difference between cycle and 2018 cycle

- 1. Lower tariff
- 2. Medium tariff
- 3. Higher tariff



Note: The percentage change is not plotted in the above chart for groups with fewer than 500 applications in any one cycle.

### D.5.35 Applications by domicile and tariff group of provider : Northern Ireland

Domicile of applicant and tariff group of provider		2010	2011	2012	2013	2014	2015	2016	2017	2018	2019
Northern Ireland	1. Lower tariff	39,250	42,950	41,860	40,700	42,470	43,180	43,490	40,840	39,020	37,410
	2. Medium tariff	27,280	28,370	27,700	34,010	33,180	33,690	34,140	32,420	31,310	30,070
	3. Higher tariff	15,630	16,040	13,060	13,790	12,730	13,680	14,420	14,130	13,210	12,330
	All	82,160	87,360	82,610	88,500	88,370	90,550	92,060	87,390	83,530	79,810

### D.5.36 Applications by domicile and tariff group of provider : Northern Ireland

Difference between cycle and 2018 cycle

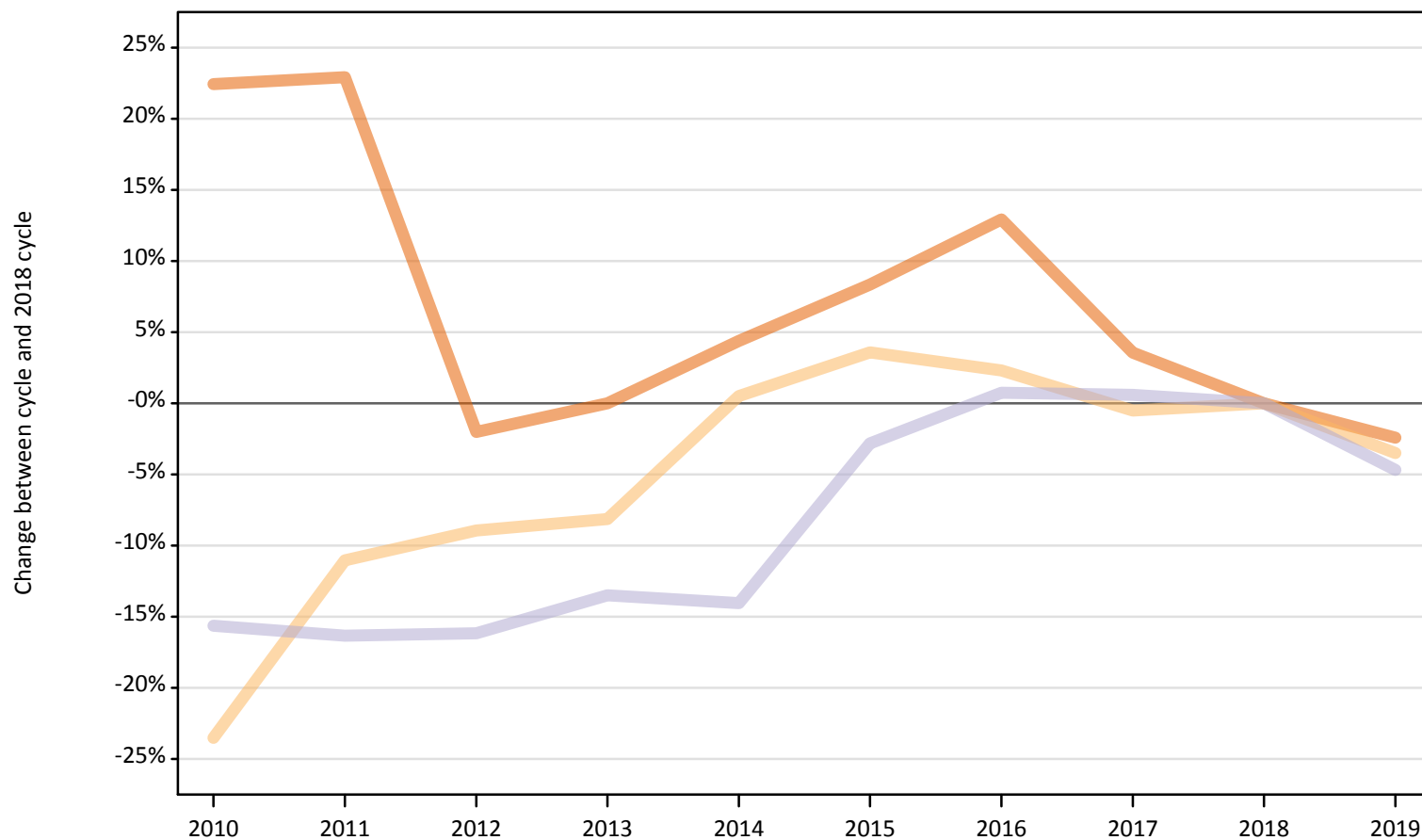
Domicile of applicant and tariff group of provider		2010	2011	2012	2013	2014	2015	2016	2017	2018	2019
Northern Ireland	1. Lower tariff	1%	10%	7%	4%	9%	11%	11%	5%	0%	-4%
	2. Medium tariff	-13%	-9%	-12%	9%	6%	8%	9%	4%	0%	-4%
	3. Higher tariff	18%	21%	-1%	4%	-4%	4%	9%	7%	0%	-7%
	All	-2%	5%	-1%	6%	6%	8%	10%	5%	0%	-4%

Note: The percentage change is not recorded in the above table for groups with fewer than 10 applicants in that cycle or in the 2018 cycle.



**D.5.37 Applications by domicile and tariff group of provider : Scotland**  
Difference between cycle and 2018 cycle

- 1. Lower tariff
- 2. Medium tariff
- 3. Higher tariff



Note: The percentage change is not plotted in the above chart for groups with fewer than 500 applications in any one cycle.

### D.5.38 Applications by domicile and tariff group of provider : Scotland

Domicile of applicant and tariff group of provider		2010	2011	2012	2013	2014	2015	2016	2017	2018	2019
Scotland	1. Lower tariff	2,790	2,800	2,230	2,280	2,380	2,470	2,570	2,360	2,280	2,220
	2. Medium tariff	62,400	72,570	74,280	74,930	81,970	84,480	83,440	81,150	81,560	78,720
	3. Higher tariff	84,790	84,110	84,280	86,960	86,400	97,670	101,260	101,110	100,510	95,820
	All	149,980	159,480	160,790	164,170	170,750	184,630	187,270	184,620	184,350	176,760

### D.5.39 Applications by domicile and tariff group of provider : Scotland

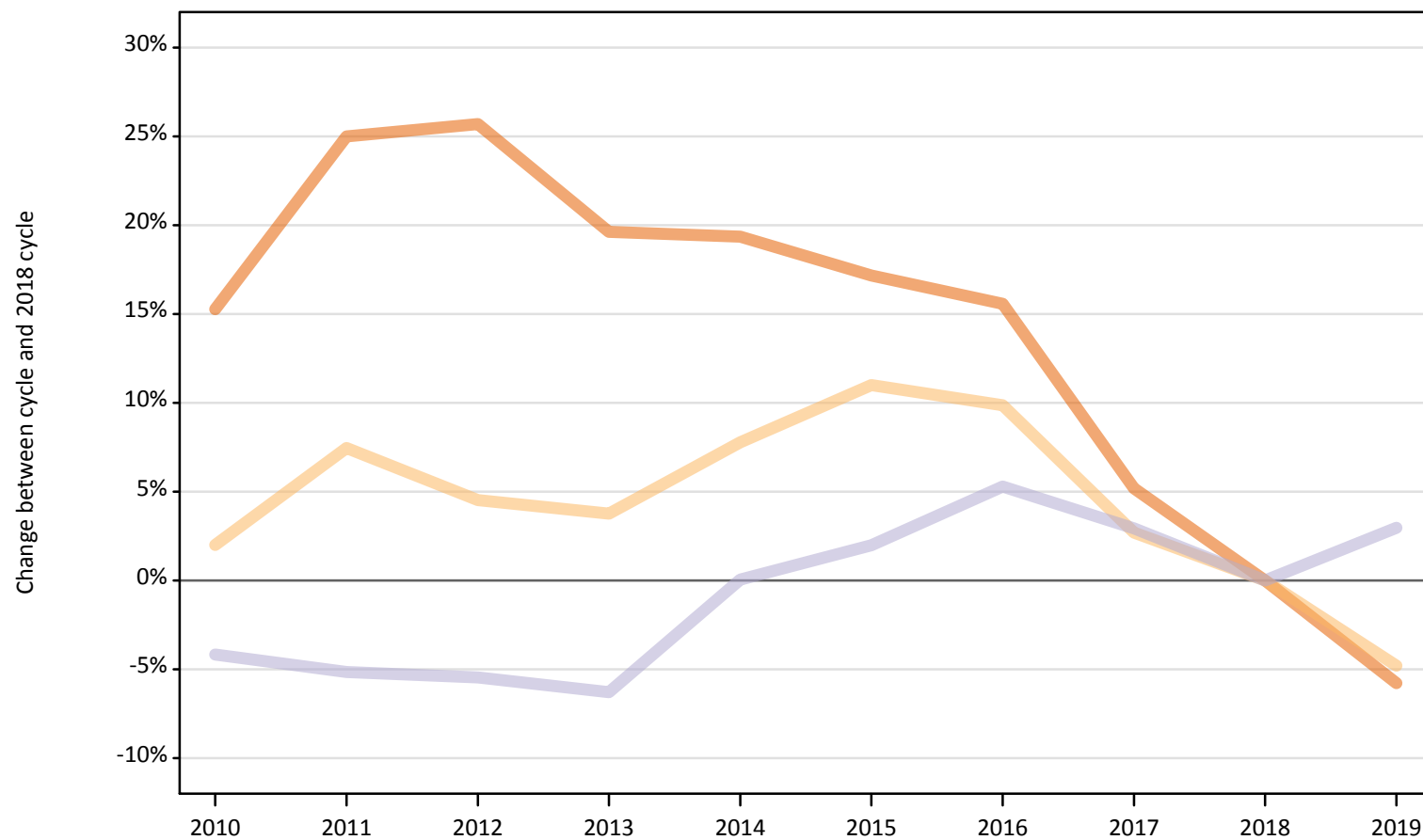
Difference between cycle and 2018 cycle

Domicile of applicant and tariff group of provider		2010	2011	2012	2013	2014	2015	2016	2017	2018	2019
Scotland	1. Lower tariff	22%	23%	-2%	0%	4%	8%	13%	4%	0%	-2%
	2. Medium tariff	-23%	-11%	-9%	-8%	1%	4%	2%	-1%	0%	-3%
	3. Higher tariff	-16%	-16%	-16%	-13%	-14%	-3%	1%	1%	0%	-5%
	All	-19%	-13%	-13%	-11%	-7%	0%	2%	0%	0%	-4%

Note: The percentage change is not recorded in the above table for groups with fewer than 10 applicants in that cycle or in the 2018 cycle.

**D.5.40 Applications by domicile and tariff group of provider : Wales**  
Difference between cycle and 2018 cycle

- 1. Lower tariff
- 2. Medium tariff
- 3. Higher tariff



Note: The percentage change is not plotted in the above chart for groups with fewer than 500 applications in any one cycle.

#### D.5.41 Applications by domicile and tariff group of provider : Wales

Domicile of applicant and tariff group of provider		2010	2011	2012	2013	2014	2015	2016	2017	2018	2019
Wales	1. Lower tariff	33,020	35,810	36,010	34,270	34,190	33,570	33,110	30,140	28,650	26,990
	2. Medium tariff	26,420	27,840	27,080	26,880	27,920	28,760	28,460	26,600	25,910	24,670
	3. Higher tariff	24,820	24,560	24,490	24,270	25,910	26,410	27,270	26,660	25,900	26,660
	All	84,270	88,210	87,580	85,420	88,020	88,730	88,840	83,400	80,450	78,320

#### D.5.42 Applications by domicile and tariff group of provider : Wales

Difference between cycle and 2018 cycle

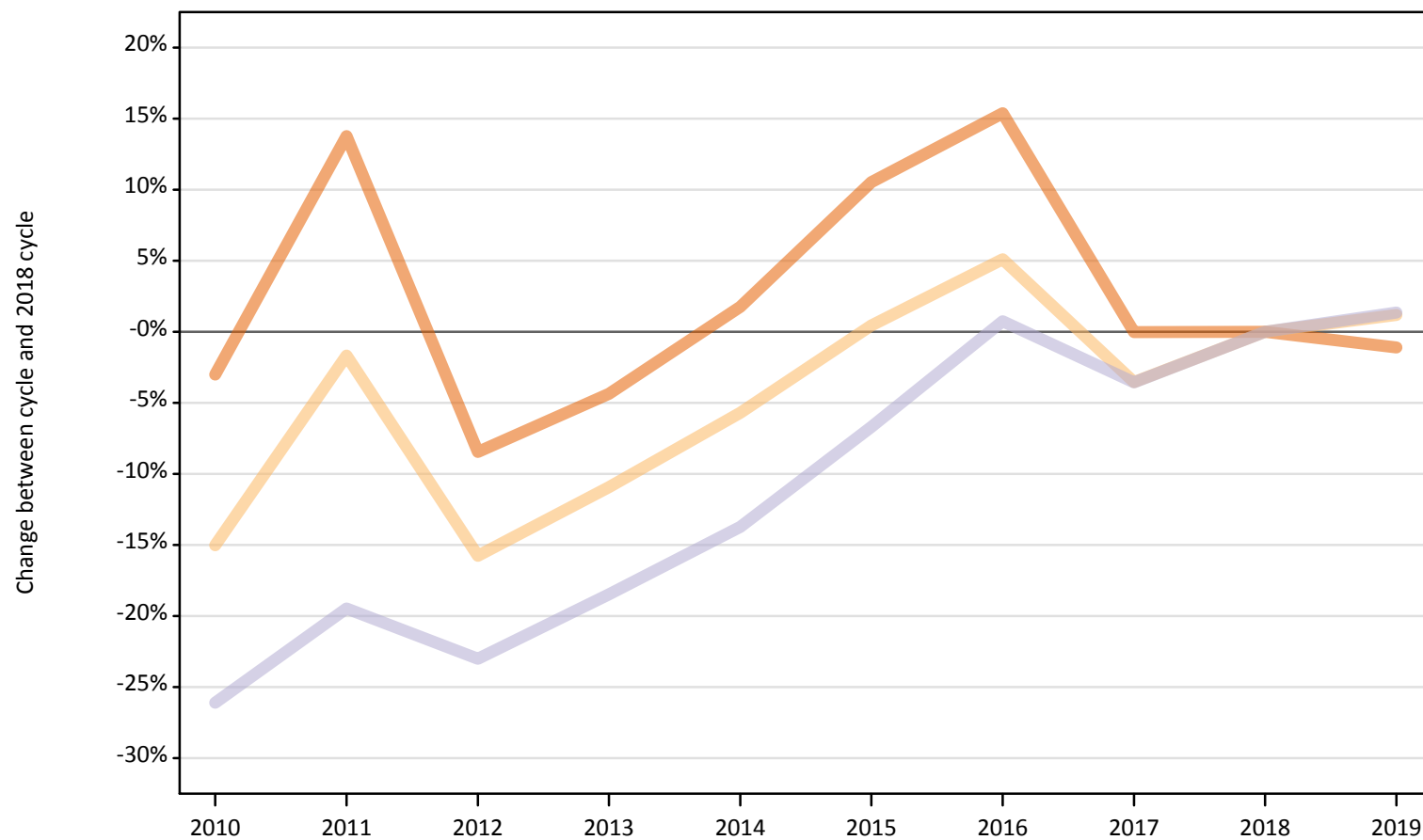
Domicile of applicant and tariff group of provider		2010	2011	2012	2013	2014	2015	2016	2017	2018	2019
Wales	1. Lower tariff	15%	25%	26%	20%	19%	17%	16%	5%	0%	-6%
	2. Medium tariff	2%	7%	5%	4%	8%	11%	10%	3%	0%	-5%
	3. Higher tariff	-4%	-5%	-5%	-6%	0%	2%	5%	3%	0%	3%
	All	5%	10%	9%	6%	9%	10%	10%	4%	0%	-3%

Note: The percentage change is not recorded in the above table for groups with fewer than 10 applicants in that cycle or in the 2018 cycle.

### D.5.43 Applications by domicile and tariff group of provider : EU (excluding UK)

Difference between cycle and 2018 cycle

- 1. Lower tariff
- 2. Medium tariff
- 3. Higher tariff



Note: The percentage change is not plotted in the above chart for groups with fewer than 500 applications in any one cycle.

#### D.5.44 Applications by domicile and tariff group of provider : EU (excluding UK)

Domicile of applicant and tariff group of provider		2010	2011	2012	2013	2014	2015	2016	2017	2018	2019
EU (excluding UK)	1. Lower tariff	36,800	43,170	34,740	36,290	38,610	41,940	43,780	37,940	37,950	37,530
	2. Medium tariff	44,320	51,280	43,930	46,450	49,180	52,380	54,810	50,300	52,150	52,770
	3. Higher tariff	76,050	82,850	79,220	83,880	88,770	96,010	103,660	99,230	102,890	104,290
	All	157,170	177,300	157,890	166,620	176,560	190,330	202,250	187,470	192,980	194,590

#### D.5.45 Applications by domicile and tariff group of provider : EU (excluding UK)

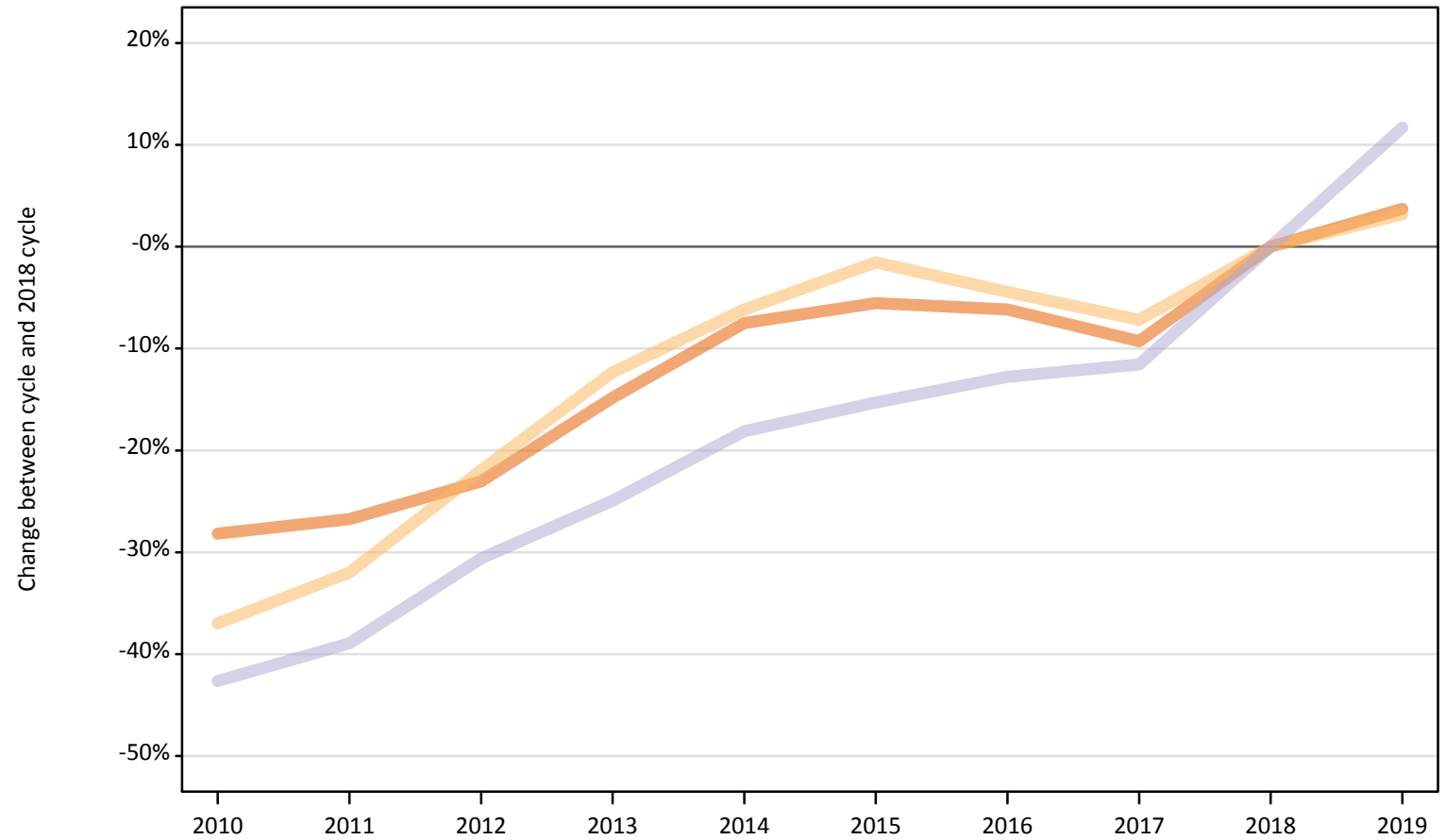
Difference between cycle and 2018 cycle

Domicile of applicant and tariff group of provider		2010	2011	2012	2013	2014	2015	2016	2017	2018	2019
EU (excluding UK)	1. Lower tariff	-3%	14%	-8%	-4%	2%	11%	15%	-0%	0%	-1%
	2. Medium tariff	-15%	-2%	-16%	-11%	-6%	0%	5%	-4%	0%	1%
	3. Higher tariff	-26%	-19%	-23%	-18%	-14%	-7%	1%	-4%	0%	1%
	All	-19%	-8%	-18%	-14%	-9%	-1%	5%	-3%	0%	1%

Note: The percentage change is not recorded in the above table for groups with fewer than 10 applicants in that cycle or in the 2018 cycle.

**D.5.46 Applications by domicile and tariff group of provider : Not EU**  
Difference between cycle and 2018 cycle

- 1. Lower tariff
- 2. Medium tariff
- 3. Higher tariff



Note: The percentage change is not plotted in the above chart for groups with fewer than 500 applications in any one cycle.

#### D.5.47 Applications by domicile and tariff group of provider : Not EU

Domicile of applicant and tariff group of provider		2010	2011	2012	2013	2014	2015	2016	2017	2018	2019
Not EU	1. Lower tariff	19,800	20,190	21,220	23,480	25,490	26,040	25,870	25,000	27,560	28,580
	2. Medium tariff	36,690	39,600	45,450	51,030	54,640	57,330	55,630	54,050	58,210	60,060
	3. Higher tariff	100,770	107,290	121,950	131,880	143,880	148,810	153,270	155,370	175,700	196,250
	All	157,260	167,070	188,620	206,390	224,010	232,180	234,770	234,420	261,480	284,890

#### D.5.48 Applications by domicile and tariff group of provider : Not EU

Difference between cycle and 2018 cycle

Domicile of applicant and tariff group of provider		2010	2011	2012	2013	2014	2015	2016	2017	2018	2019
Not EU	1. Lower tariff	-28%	-27%	-23%	-15%	-8%	-6%	-6%	-9%	0%	4%
	2. Medium tariff	-37%	-32%	-22%	-12%	-6%	-2%	-4%	-7%	0%	3%
	3. Higher tariff	-43%	-39%	-31%	-25%	-18%	-15%	-13%	-12%	0%	12%
	All	-40%	-36%	-28%	-21%	-14%	-11%	-10%	-10%	0%	9%

Note: The percentage change is not recorded in the above table for groups with fewer than 10 applicants in that cycle or in the 2018 cycle.



## D.5.49 Technical notes and definitions

Applicants have been able to submit applications for all 2019 courses since early September.

Applicants who submit their applications to UCAS by the January deadline are considered as 'on time' applicants for the large majority of courses offered through UCAS.

This statistical release covers all Main Scheme applicants who submit their applications to UCAS by the January deadline, including those who have applied for courses with a 15 October deadline. Counts of RPAs (records of prior acceptance) are not included.

Counts of the number of applicants reported have been rounded to the nearest 10 applicants, this may result in instances where totals do not equal the sum of the components. Proportional changes have been rounded to the nearest whole percentage point.

In 2009, the Canary Islands classification changed from Not EU to EU (excluding UK). In order to present an accurate time series, the Canary Islands have been consistently classified as EU (excluding UK). This will result in differences with data published prior to 2010.

### Age

This statistical release uses country-specific age definitions which align with the cut off points for school/college cohorts within the different administrations of the UK. For England and Wales ages are defined on the 31 August, for Northern Ireland on the 1 July and for Scotland on the 28 February the following year. Defining ages in this way matches the assignment of children to school cohorts. For applicants outside of the UK the cohort cut off for England and Wales has been used.

### Applicant

A person who has made an application in the UCAS system during the cycle reported (including applications for deferred entry). Records of prior acceptance (RPAs) are excluded.

### Application

An application to a course at a provider made by an applicant in the UCAS main scheme. Applicants may make up to five main scheme applications.

### Country of provider

An applicant may be counted once for each provider country they have applied to in the main scheme. If an applicant has applied to providers in multiple countries then the applicant is counted once within each country of provider applied to.

### Domicile

Declared area of permanent residence. The Channel Islands and the Isle of Man have been assigned as 'Not EU'.

### Ethnic group

High level grouping of ethnic origin as declared by the applicant: 'Asian', 'Black', 'Mixed', 'White', 'Other', 'Unknown'.

### First time applicant

An applicant that did not apply to the UCAS scheme in the previous cycle.

### Main scheme

The main UCAS application scheme through which up to five providers/courses can be applied to. This opens in September and closes to new applications on 30 June the following year.

### Reapplicant

An applicant that applied to the UCAS scheme in the previous cycle.

### Sex

As declared by the applicant.

### SIMD 2016

Scottish Index of Multiple Deprivation identifies small area concentrations of multiple deprivation across all of Scotland, providing a relative measure of deprivation among small areas (data zones). In this report, the SIMD 2016 has been used to group areas in each year in the times series.

### POLAR4

Developed by HEFCE and classifies small areas across the UK into five groups, according to their level of young participation in HE. Each of these groups represents around 20 per cent of young people, and is ranked from quintile 1 (areas with the lowest young participation rates, considered as the most disadvantaged) to quintile 5 (highest young participation rates, considered most advantaged). POLAR4 is the most recent version of the POLAR classification, and is available for the first time in UCAS reporting since its launch in 2017.

### Tariff Group of provider

Providers are grouped as higher, medium or lower tariff based on their average levels of attainment of their accepted applicants (summarised through UCAS Tariff points) in recent cycles. Each group of providers accounted for around a third of all UK 18 year old acceptances in recent cycles.

### Subject group

The JACS3 classification used to classify courses into subject groups. With the introduction of HECoS for the 2019 cycle, new courses that were classified using HECoS instead of JACS have been allocated modelled JACS3 values.

### Subject group (HECoS)

The CAH classification used to categorise HECoS course subject codes into subject groups. A course may be associated with up to 5 individual subject codes and their respective percentage weight. For this analysis, application totals for subject groups have been calculated by apportioning course applications as weighted by subject group.