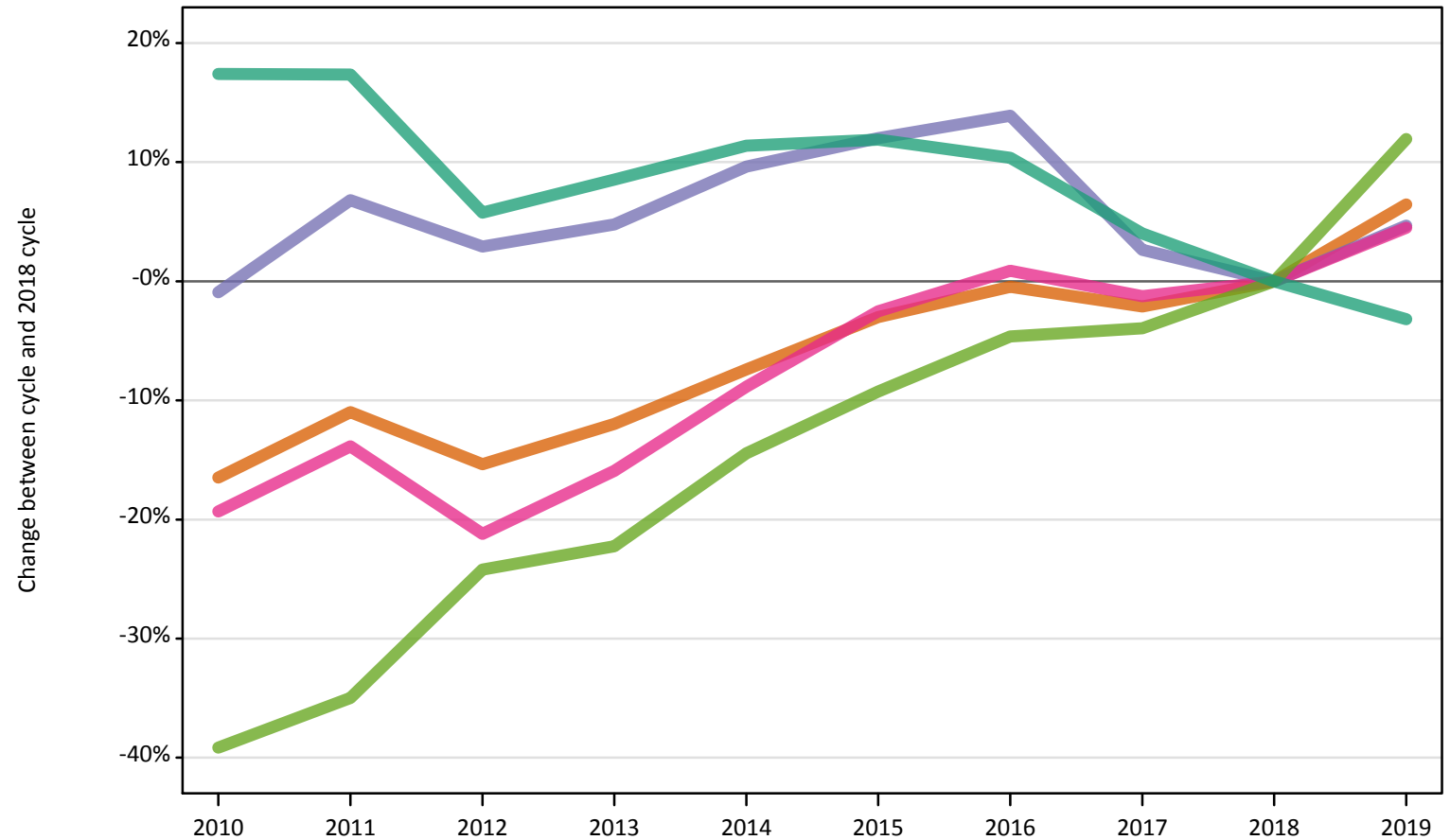


January Deadline Analysis: Ethnic group

Applicants by ethnic group and age at the 15 January deadline

D.10.1 Applicants by ethnic group: UK Difference between cycle and 2018 cycle

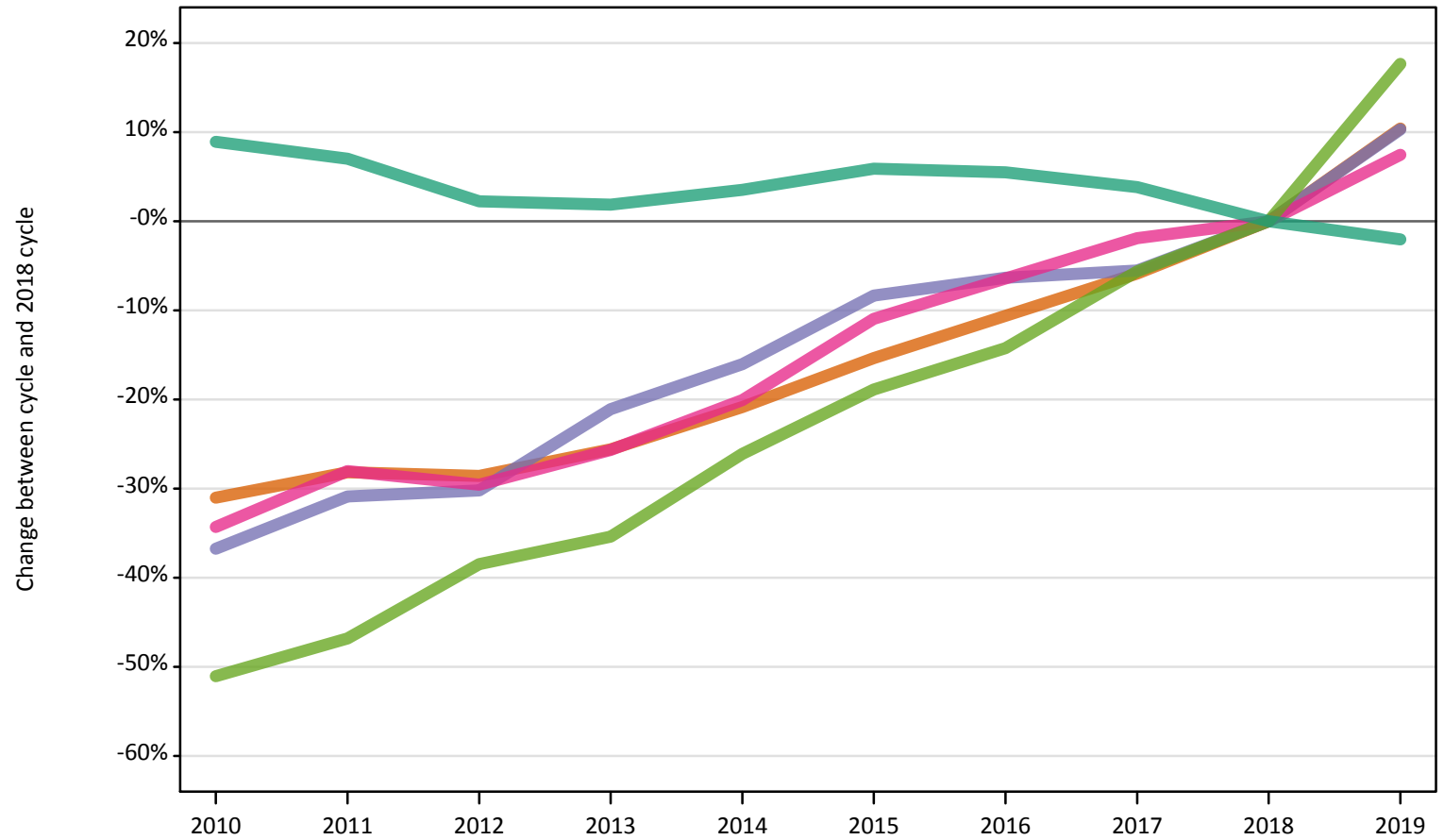
- Asian
- Black
- Mixed
- White
- Other



Note: The percentage change is not plotted in the above chart for groups with fewer than 500 applicants in any one cycle.

D.10.2 18 year old applicants by ethnic group: UK
Difference between cycle and 2018 cycle

- Asian
- Black
- Mixed
- White
- Other



Note: The percentage change is not plotted in the above chart for groups with fewer than 500 applicants in any one cycle.

D.10.3 Applicants by age and ethnic group: UK

Age group and ethnic group of applicant		2010	2011	2012	2013	2014	2015	2016	2017	2018	2019
Under 18	Asian	220	190	190	170	140	180	160	180	180	200
	Black	110	110	70	80	100	80	100	90	110	100
	Mixed	110	90	80	70	90	90	80	90	100	100
	White	1,720	1,610	1,300	1,140	1,180	1,230	1,280	1,170	1,110	1,050
	Other	50	30	50	50	40	50	50	50	40	60
18	Asian	23,820	24,810	24,660	25,690	27,320	29,230	30,860	32,500	34,520	38,120
	Black	9,030	9,870	9,960	11,270	11,990	13,080	13,370	13,480	14,270	15,750
	Mixed	7,920	8,680	8,490	8,960	9,640	10,740	11,280	11,830	12,060	12,950
	White	219,150	215,290	205,670	204,940	208,290	213,070	212,210	208,880	201,200	197,070
	Other	2,080	2,260	2,620	2,750	3,140	3,450	3,650	4,010	4,250	5,000
19	Asian	11,550	12,980	11,820	12,680	13,160	13,760	13,790	12,750	12,470	12,370
	Black	5,550	6,110	5,700	6,150	6,610	7,070	7,130	6,430	6,100	6,310
	Mixed	3,640	3,780	3,190	3,680	4,060	4,220	4,430	4,090	4,090	4,150
	White	70,390	73,940	58,510	66,150	66,890	66,180	65,480	59,520	55,920	52,730
	Other	1,140	1,160	1,440	1,550	1,720	1,820	1,940	1,860	1,880	1,960
20 and over	Asian	12,000	12,750	11,560	11,620	12,140	12,100	11,910	10,350	9,810	9,970
	Black	17,800	18,930	18,000	16,850	17,240	16,480	16,750	13,640	12,300	12,170
	Mixed	4,990	5,250	4,510	4,660	5,040	5,090	5,040	4,390	4,400	4,370
	White	101,340	101,560	88,190	90,740	96,100	93,640	90,130	78,270	76,180	72,940
	Other	1,800	1,960	2,200	2,120	2,220	2,220	2,300	2,070	2,140	2,290
All ages	Asian	47,590	50,720	48,220	50,150	52,760	55,260	56,720	55,770	56,980	60,660
	Black	32,490	35,010	33,740	34,350	35,940	36,720	37,340	33,650	32,790	34,320
	Mixed	16,660	17,790	16,270	17,360	18,820	20,130	20,830	20,390	20,650	21,580
	White	392,590	392,400	353,680	362,970	372,450	374,110	369,090	347,830	334,410	323,790
	Other	5,060	5,400	6,300	6,460	7,110	7,540	7,930	7,980	8,310	9,310

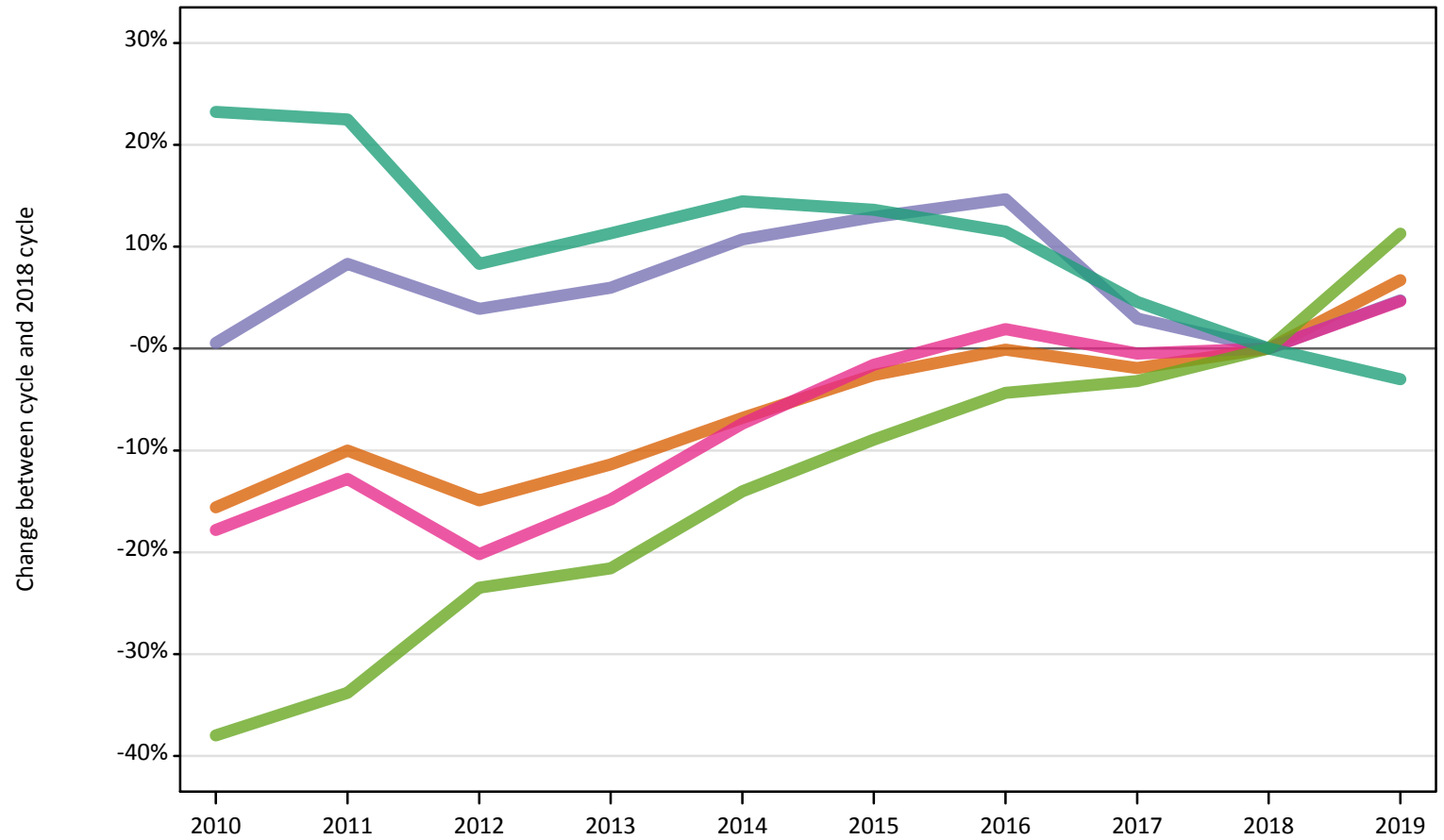
D.10.4 Applicants by age and ethnic group: UK
Difference between cycle and 2018 cycle

Age group and ethnic group of applicant		2010	2011	2012	2013	2014	2015	2016	2017	2018	2019
Under 18	Asian	22%	2%	2%	-7%	-22%	0%	-15%	-4%	0%	7%
	Black	-2%	-2%	-35%	-23%	-11%	-23%	-12%	-17%	0%	-12%
	Mixed	10%	-15%	-20%	-31%	-11%	-17%	-23%	-16%	0%	-1%
	White	56%	46%	18%	3%	6%	11%	16%	6%	0%	-5%
	Other	2%	-39%	5%	7%	-9%	23%	2%	5%	0%	36%
18	Asian	-31%	-28%	-29%	-26%	-21%	-15%	-11%	-6%	0%	10%
	Black	-37%	-31%	-30%	-21%	-16%	-8%	-6%	-6%	0%	10%
	Mixed	-34%	-28%	-30%	-26%	-20%	-11%	-6%	-2%	0%	7%
	White	9%	7%	2%	2%	4%	6%	5%	4%	0%	-2%
	Other	-51%	-47%	-38%	-35%	-26%	-19%	-14%	-6%	0%	18%
19	Asian	-7%	4%	-5%	2%	6%	10%	11%	2%	0%	-1%
	Black	-9%	0%	-7%	1%	8%	16%	17%	5%	0%	3%
	Mixed	-11%	-8%	-22%	-10%	-1%	3%	8%	0%	0%	1%
	White	26%	32%	5%	18%	20%	18%	17%	6%	0%	-6%
	Other	-40%	-38%	-23%	-18%	-9%	-3%	3%	-1%	0%	4%
20 and over	Asian	22%	30%	18%	18%	24%	23%	21%	6%	0%	2%
	Black	45%	54%	46%	37%	40%	34%	36%	11%	0%	-1%
	Mixed	13%	19%	2%	6%	14%	16%	15%	-0%	0%	-1%
	White	33%	33%	16%	19%	26%	23%	18%	3%	0%	-4%
	Other	-16%	-8%	3%	-1%	4%	4%	8%	-3%	0%	7%
All ages	Asian	-16%	-11%	-15%	-12%	-7%	-3%	-0%	-2%	0%	6%
	Black	-1%	7%	3%	5%	10%	12%	14%	3%	0%	5%
	Mixed	-19%	-14%	-21%	-16%	-9%	-3%	1%	-1%	0%	4%
	White	17%	17%	6%	9%	11%	12%	10%	4%	0%	-3%
	Other	-39%	-35%	-24%	-22%	-14%	-9%	-5%	-4%	0%	12%

Note: The percentage change is not recorded in the above table for groups with fewer than 10 applicants in that cycle or in the 2018 cycle.

D.10.5 Applicants by ethnic group: England
Difference between cycle and 2018 cycle

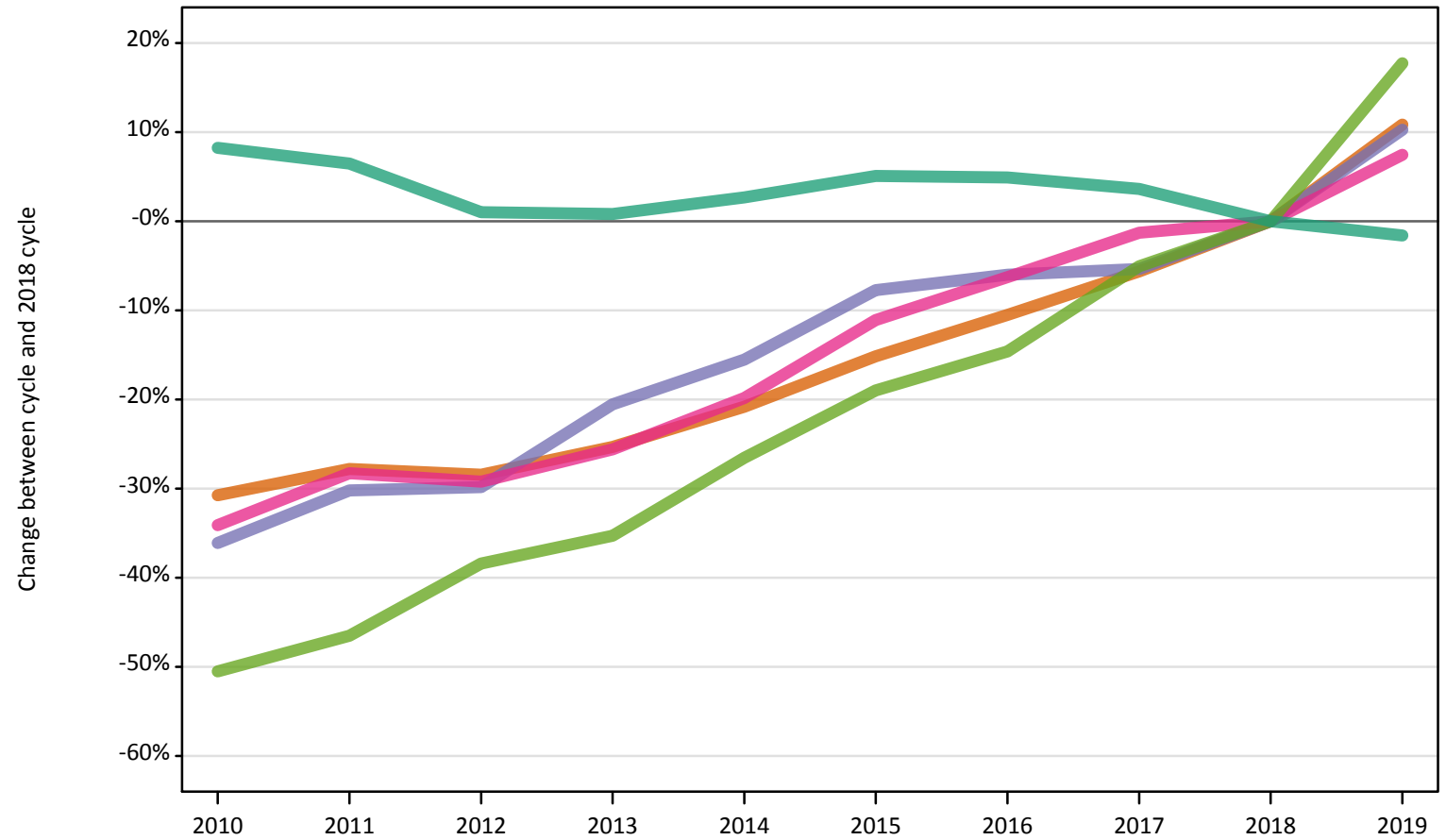
- Asian
- Black
- Mixed
- White
- Other



Note: The percentage change is not plotted in the above chart for groups with fewer than 500 applicants in any one cycle.

D.10.6 18 year old applicants by ethnic group: England
Difference between cycle and 2018 cycle

- Asian
- Black
- Mixed
- White
- Other



Note: The percentage change is not plotted in the above chart for groups with fewer than 500 applicants in any one cycle.

D.10.7 Applicants by age and ethnic group: England

Age group and ethnic group of applicant		2010	2011	2012	2013	2014	2015	2016	2017	2018	2019
Under 18	Asian	160	120	140	130	100	150	110	130	120	130
	Black	90	100	60	80	90	70	80	70	90	70
	Mixed	90	70	50	50	70	70	60	70	80	80
	White	820	750	540	490	550	550	590	490	440	390
	Other	40	30	40	40	30	50	40	30	40	50
18	Asian	22,780	23,760	23,540	24,570	26,050	27,910	29,440	31,040	32,900	36,470
	Black	8,910	9,730	9,780	11,070	11,770	12,860	13,100	13,190	13,930	15,360
	Mixed	7,430	8,090	7,980	8,390	9,040	10,030	10,570	11,130	11,280	12,120
	White	177,730	174,850	165,900	165,540	168,630	172,590	172,310	170,180	164,230	161,590
	Other	2,010	2,170	2,500	2,630	2,980	3,290	3,470	3,860	4,060	4,780
19	Asian	11,110	12,520	11,300	12,170	12,660	13,210	13,260	12,190	11,920	11,810
	Black	5,470	6,010	5,600	6,040	6,490	6,950	6,990	6,310	5,960	6,160
	Mixed	3,460	3,580	3,000	3,480	3,870	3,990	4,150	3,850	3,830	3,850
	White	60,420	62,820	47,800	55,200	55,740	54,960	53,500	48,480	45,010	42,320
	Other	1,110	1,120	1,380	1,490	1,650	1,750	1,860	1,770	1,810	1,850
20 and over	Asian	11,230	11,880	10,670	10,680	11,190	10,990	10,790	9,260	8,700	8,840
	Black	17,280	18,370	17,370	16,280	16,620	15,780	16,050	12,940	11,600	11,470
	Mixed	4,660	4,860	4,150	4,280	4,640	4,630	4,600	3,870	3,830	3,850
	White	80,210	78,790	66,260	67,050	71,520	66,200	62,370	51,740	49,320	46,850
	Other	1,700	1,860	2,070	1,980	2,060	2,030	2,120	1,910	1,920	2,020
All ages	Asian	45,280	48,280	45,660	47,540	50,000	52,260	53,590	52,620	53,650	57,250
	Black	31,750	34,210	32,810	33,470	34,970	35,660	36,210	32,510	31,580	33,070
	Mixed	15,630	16,590	15,180	16,200	17,620	18,720	19,380	18,920	19,020	19,900
	White	319,170	317,220	280,500	288,280	296,440	294,300	288,760	270,890	258,990	251,160
	Other	4,850	5,180	5,990	6,130	6,720	7,120	7,480	7,570	7,820	8,700

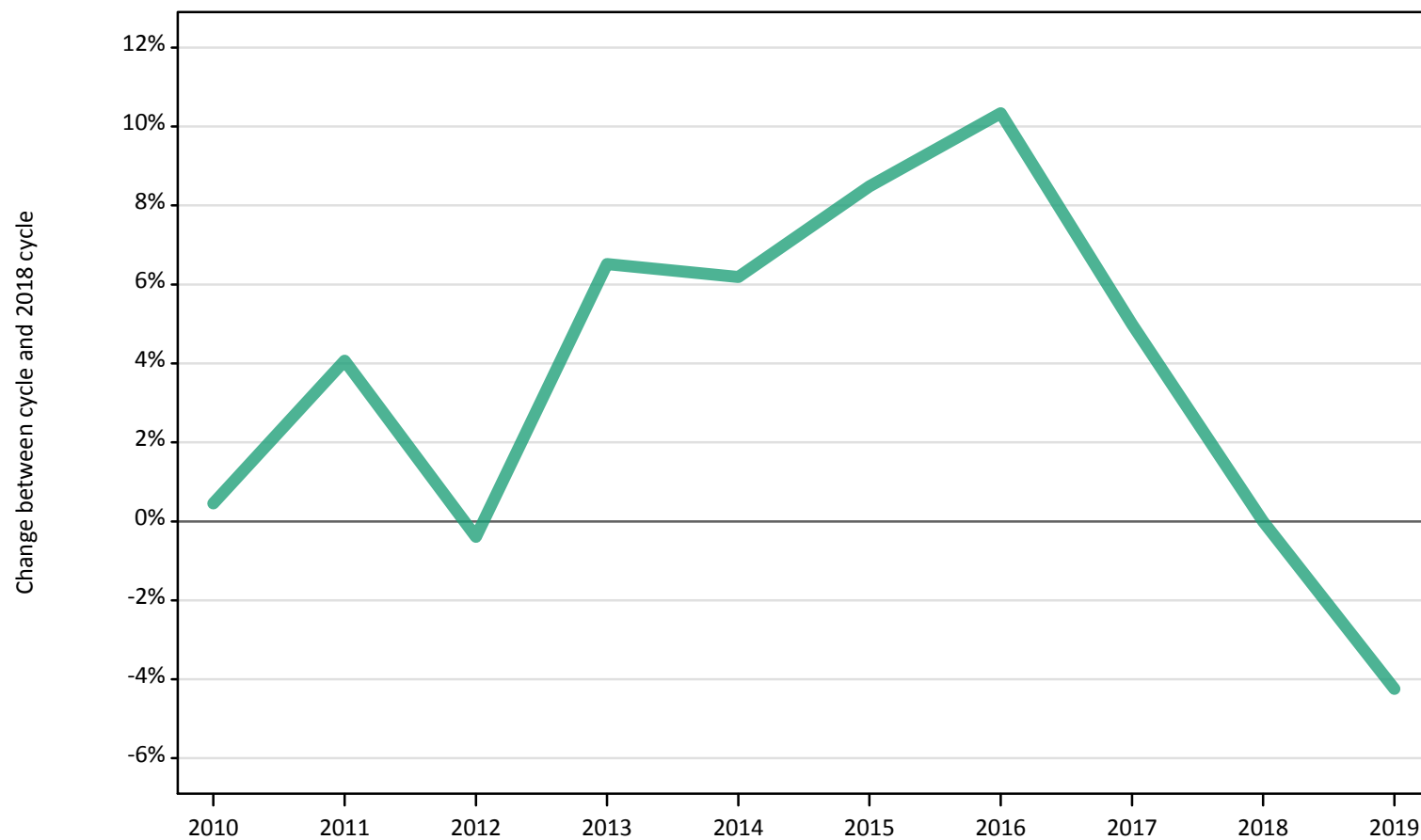
D.10.8 Applicants by age and ethnic group: England
Difference between cycle and 2018 cycle

Age group and ethnic group of applicant		2010	2011	2012	2013	2014	2015	2016	2017	2018	2019
Under 18	Asian	27%	1%	15%	6%	-15%	20%	-15%	3%	0%	8%
	Black	-1%	2%	-34%	-19%	-2%	-22%	-18%	-22%	0%	-23%
	Mixed	2%	-20%	-37%	-35%	-16%	-17%	-25%	-12%	0%	-4%
	White	87%	72%	25%	12%	27%	26%	35%	11%	0%	-11%
	Other	11%	-31%	6%	0%	-8%	28%	0%	-11%	0%	28%
18	Asian	-31%	-28%	-28%	-25%	-21%	-15%	-11%	-6%	0%	11%
	Black	-36%	-30%	-30%	-21%	-16%	-8%	-6%	-5%	0%	10%
	Mixed	-34%	-28%	-29%	-26%	-20%	-11%	-6%	-1%	0%	7%
	White	8%	6%	1%	1%	3%	5%	5%	4%	0%	-2%
	Other	-51%	-46%	-38%	-35%	-27%	-19%	-15%	-5%	0%	18%
19	Asian	-7%	5%	-5%	2%	6%	11%	11%	2%	0%	-1%
	Black	-8%	1%	-6%	1%	9%	17%	17%	6%	0%	3%
	Mixed	-10%	-7%	-22%	-9%	1%	4%	8%	0%	0%	1%
	White	34%	40%	6%	23%	24%	22%	19%	8%	0%	-6%
	Other	-39%	-38%	-24%	-17%	-9%	-3%	3%	-2%	0%	3%
20 and over	Asian	29%	36%	23%	23%	29%	26%	24%	6%	0%	2%
	Black	49%	58%	50%	40%	43%	36%	38%	12%	0%	-1%
	Mixed	22%	27%	8%	12%	21%	21%	20%	1%	0%	1%
	White	63%	60%	34%	36%	45%	34%	26%	5%	0%	-5%
	Other	-11%	-3%	8%	3%	7%	6%	10%	-0%	0%	6%
All ages	Asian	-16%	-10%	-15%	-11%	-7%	-3%	-0%	-2%	0%	7%
	Black	1%	8%	4%	6%	11%	13%	15%	3%	0%	5%
	Mixed	-18%	-13%	-20%	-15%	-7%	-2%	2%	-0%	0%	5%
	White	23%	22%	8%	11%	14%	14%	11%	5%	0%	-3%
	Other	-38%	-34%	-23%	-22%	-14%	-9%	-4%	-3%	0%	11%

Note: The percentage change is not recorded in the above table for groups with fewer than 10 applicants in that cycle or in the 2018 cycle.

D.10.9 Applicants by ethnic group: Northern Ireland
Difference between cycle and 2018 cycle

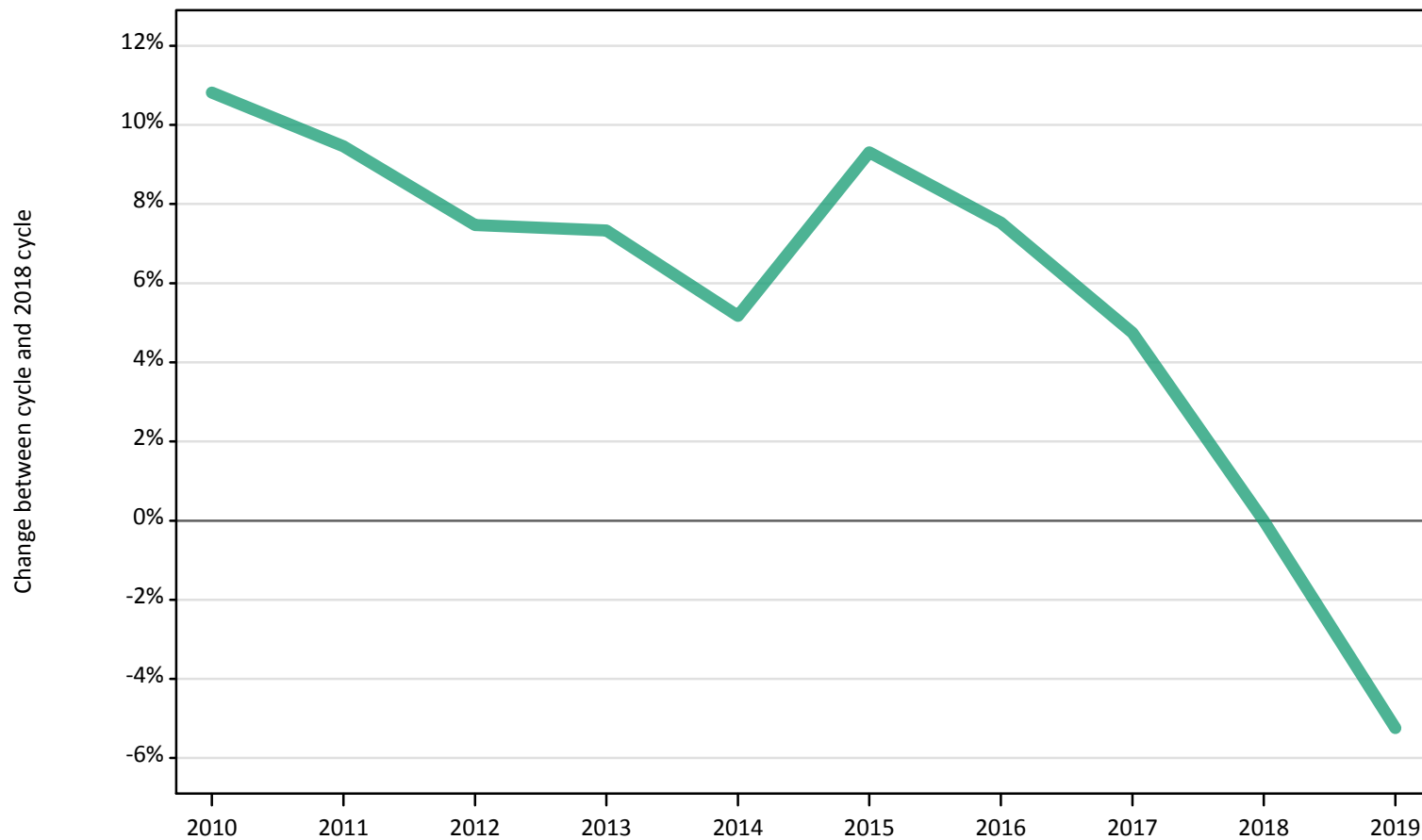
- Asian
- Black
- Mixed
- White
- Other



Note: The percentage change is not plotted in the above chart for groups with fewer than 500 applicants in any one cycle.

D.10.10 18 year old applicants by ethnic group: Northern Ireland
Difference between cycle and 2018 cycle

- Asian
- Black
- Mixed
- White
- Other



Note: The percentage change is not plotted in the above chart for groups with fewer than 500 applicants in any one cycle.

D.10.11 Applicants by age and ethnic group: Northern Ireland

Age group and ethnic group of applicant		2010	2011	2012	2013	2014	2015	2016	2017	2018	2019
Under 18	Asian	0	0	0	0	0	0	0	0	0	0
	Black	0	0	0	0	0	0	0	0	0	0
	Mixed	0	0	0	0	0	0	0	0	0	0
	White	50	40	50	30	20	30	40	20	20	30
	Other	0	0	0	0	0	0	0	0	0	0
18	Asian	90	90	90	100	110	130	140	140	160	180
	Black	10	10	10	20	20	20	20	30	20	30
	Mixed	70	80	60	80	80	100	100	100	130	100
	White	11,820	11,680	11,460	11,450	11,220	11,660	11,470	11,170	10,670	10,110
	Other	10	10	10	10	10	10	10	10	20	20
19	Asian	30	40	50	60	40	50	60	60	50	60
	Black	0	10	0	0	10	10	20	10	20	20
	Mixed	20	20	20	20	20	20	30	40	30	50
	White	2,290	2,820	2,460	2,780	2,880	2,910	3,320	3,060	2,870	2,770
	Other	10	10	0	0	10	10	0	10	10	10
20 and over	Asian	40	40	50	40	50	60	60	50	60	70
	Black	30	30	30	30	40	40	50	40	40	40
	Mixed	20	40	20	40	40	50	30	40	60	40
	White	3,890	4,160	3,920	4,870	4,960	4,890	5,000	4,610	4,400	4,300
	Other	10	10	10	20	10	10	10	10	10	10
All ages	Asian	160	180	190	200	200	230	260	250	270	310
	Black	40	50	50	60	70	60	90	80	80	100
	Mixed	120	150	110	140	140	170	160	180	210	190
	White	18,050	18,700	17,890	19,140	19,080	19,490	19,820	18,860	17,970	17,200
	Other	20	20	20	30	30	20	30	30	40	40

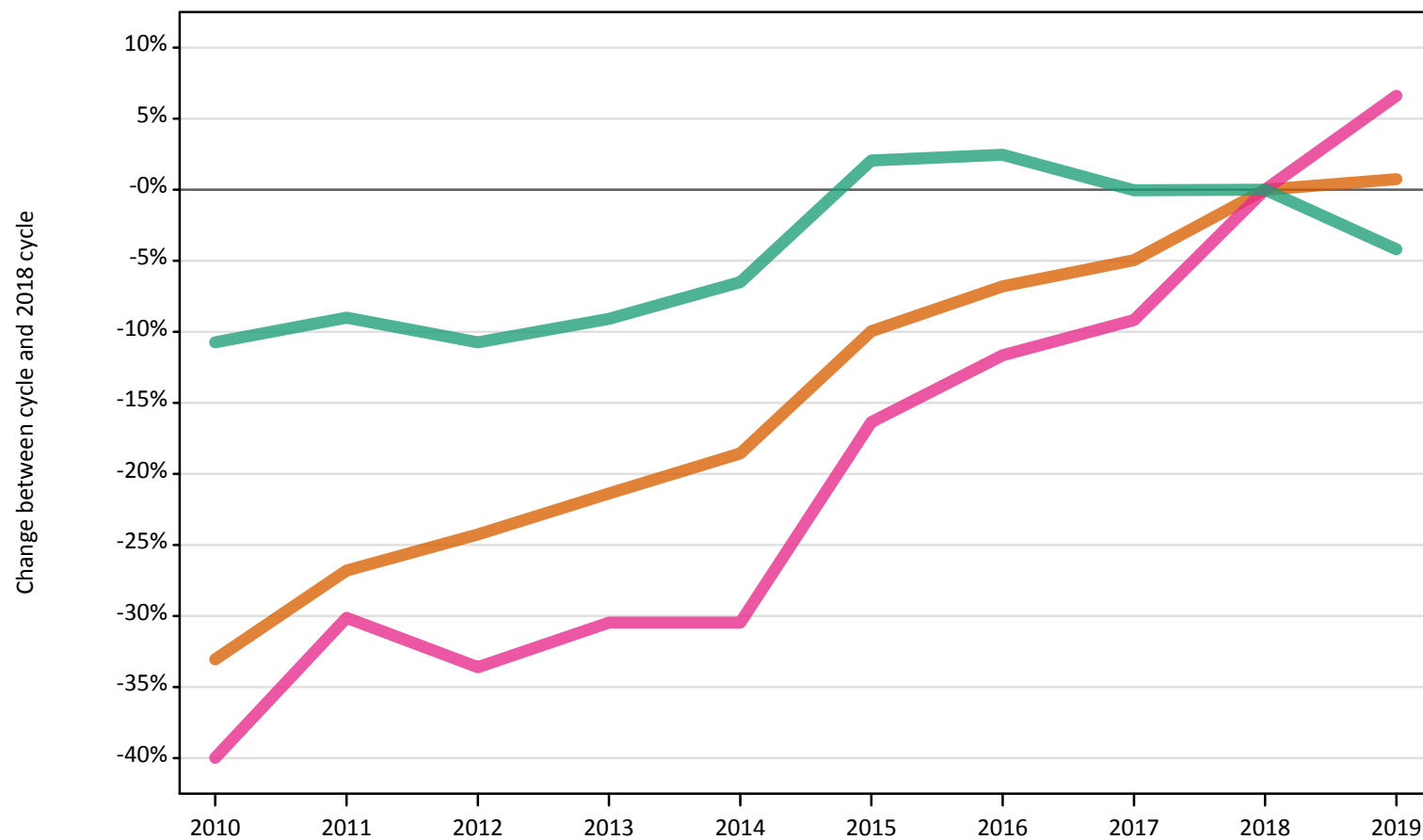
D.10.12 Applicants by age and ethnic group: Northern Ireland
 Difference between cycle and 2018 cycle

Age group and ethnic group of applicant		2010	2011	2012	2013	2014	2015	2016	2017	2018	2019
Under 18	Asian										
	Black										
	Mixed										
	White	117%	91%	96%	39%	0%	39%	57%	-9%	0%	30%
	Other										
18	Asian	-44%	-40%	-45%	-33%	-28%	-19%	-13%	-10%	0%	16%
	Black	-63%	-37%	-32%	0%	0%	-21%	26%	32%	0%	68%
	Mixed	-46%	-35%	-53%	-40%	-37%	-22%	-24%	-20%	0%	-21%
	White	11%	9%	7%	7%	5%	9%	8%	5%	0%	-5%
	Other	-53%	-58%	-47%	-58%	-32%	-58%	-37%	-32%	0%	-5%
19	Asian	-29%	-17%	8%	15%	-8%	-4%	31%	19%	0%	31%
	Black		-47%			-53%	-65%	-6%	-41%	0%	0%
	Mixed	-15%	-19%	-23%	-35%	-31%	-23%	12%	46%	0%	88%
	White	-20%	-2%	-14%	-3%	0%	1%	15%	6%	0%	-4%
	Other	0%	-17%			0%	17%		17%	0%	33%
20 and over	Asian	-36%	-30%	-11%	-30%	-26%	-2%	-5%	-15%	0%	11%
	Black	-23%	-36%	-34%	-23%	0%	-18%	7%	-2%	0%	-5%
	Mixed	-59%	-23%	-59%	-21%	-34%	-13%	-39%	-29%	0%	-25%
	White	-12%	-5%	-11%	11%	13%	11%	14%	5%	0%	-2%
	Other	-25%	-17%	-33%	33%	8%	-25%	-8%	-42%	0%	-8%
All ages	Asian	-40%	-33%	-28%	-24%	-24%	-13%	-3%	-6%	0%	17%
	Black	-47%	-40%	-44%	-30%	-12%	-28%	7%	-2%	0%	17%
	Mixed	-45%	-29%	-50%	-34%	-34%	-20%	-23%	-14%	0%	-9%
	White	0%	4%	-0%	7%	6%	8%	10%	5%	0%	-4%
	Other	-37%	-39%	-42%	-32%	-16%	-37%	-29%	-29%	0%	-3%

Note: The percentage change is not recorded in the above table for groups with fewer than 10 applicants in that cycle or in the 2018 cycle.

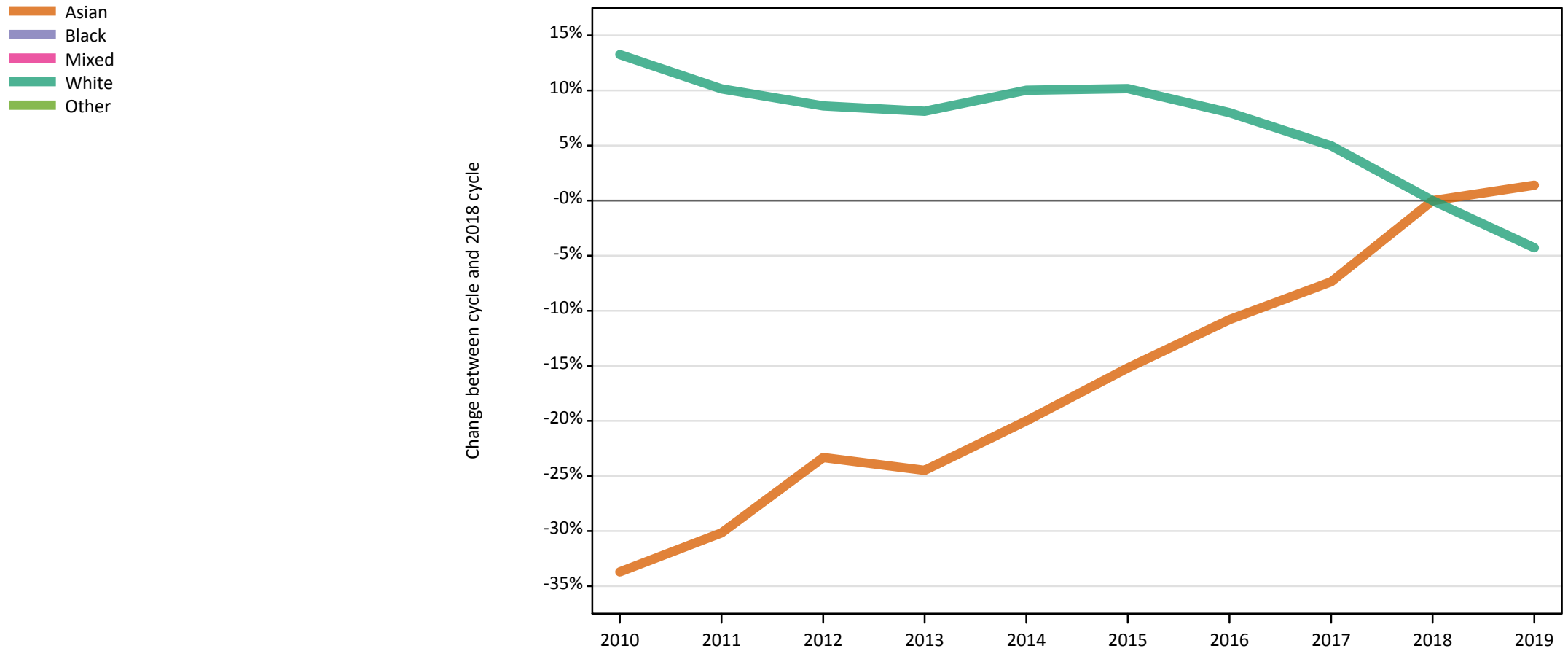
D.10.13 Applicants by ethnic group: Scotland
Difference between cycle and 2018 cycle

- Asian
- Black
- Mixed
- White
- Other



Note: The percentage change is not plotted in the above chart for groups with fewer than 500 applicants in any one cycle.

D.10.14 18 year old applicants by ethnic group: Scotland
Difference between cycle and 2018 cycle



Note: The percentage change is not plotted in the above chart for groups with fewer than 500 applicants in any one cycle.

D.10.15 Applicants by age and ethnic group: Scotland

Age group and ethnic group of applicant		2010	2011	2012	2013	2014	2015	2016	2017	2018	2019
Under 18	Asian	60	60	40	40	30	30	50	50	60	60
	Black	20	10	10	10	10	10	20	20	10	20
	Mixed	20	20	20	10	20	10	10	10	20	20
	White	820	790	700	590	580	630	630	650	630	610
	Other	10	0	10	10	10	10	10	10	10	10
18	Asian	620	650	720	710	750	790	830	870	940	950
	Black	70	80	90	110	100	120	140	160	210	210
	Mixed	230	290	250	280	280	330	340	350	370	410
	White	18,560	18,050	17,790	17,710	18,020	18,050	17,690	17,200	16,380	15,680
	Other	20	40	60	60	60	90	80	80	90	110
19	Asian	240	260	280	260	280	280	290	310	320	300
	Black	30	40	40	40	50	50	60	60	70	80
	Mixed	80	90	90	100	90	110	140	120	130	130
	White	4,520	4,780	4,880	4,820	4,810	4,960	5,150	4,940	5,090	4,770
	Other	10	20	30	20	20	20	40	40	40	40
20 and over	Asian	530	610	600	690	700	840	840	830	850	870
	Black	350	370	430	390	430	490	470	500	500	480
	Mixed	200	230	230	230	230	290	300	330	380	390
	White	12,170	13,150	12,700	13,610	14,350	17,590	17,910	17,600	18,300	17,640
	Other	50	60	70	90	90	130	120	110	150	190
All ages	Asian	1,450	1,580	1,640	1,700	1,760	1,950	2,010	2,050	2,160	2,180
	Black	460	510	570	540	580	680	680	740	790	790
	Mixed	540	620	590	620	620	750	790	810	890	950
	White	36,060	36,760	36,060	36,730	37,770	41,230	41,390	40,380	40,400	38,700
	Other	90	120	160	170	180	240	250	240	290	360

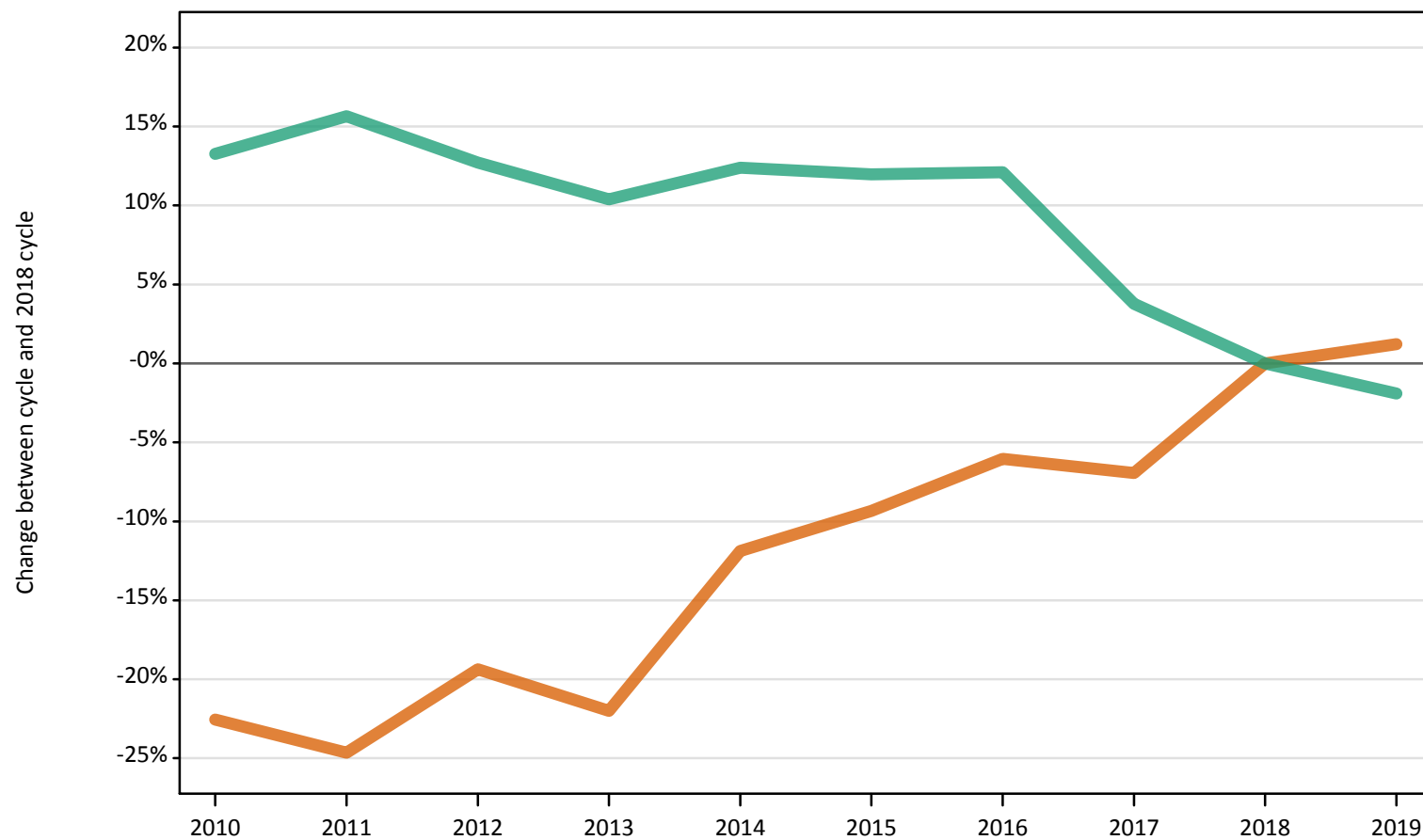
D.10.16 Applicants by age and ethnic group: Scotland
Difference between cycle and 2018 cycle

Age group and ethnic group of applicant		2010	2011	2012	2013	2014	2015	2016	2017	2018	2019
Under 18	Asian	11%	2%	-27%	-35%	-38%	-42%	-18%	-18%	0%	9%
	Black	7%	-21%	-36%	-50%	-64%	-29%	29%	21%	0%	29%
	Mixed	22%	-11%	33%	-28%	-6%	-22%	-22%	-33%	0%	11%
	White	31%	26%	11%	-6%	-7%	1%	1%	4%	0%	-2%
	Other	-29%		-14%	43%	0%	-14%	14%	71%	0%	100%
18	Asian	-34%	-30%	-23%	-24%	-20%	-15%	-11%	-7%	0%	1%
	Black	-64%	-60%	-57%	-48%	-50%	-40%	-32%	-21%	0%	2%
	Mixed	-37%	-21%	-31%	-22%	-23%	-10%	-6%	-5%	0%	13%
	White	13%	10%	9%	8%	10%	10%	8%	5%	0%	-4%
	Other	-75%	-51%	-38%	-30%	-35%	-4%	-6%	-12%	0%	27%
19	Asian	-24%	-18%	-12%	-17%	-13%	-10%	-8%	-3%	0%	-6%
	Black	-62%	-42%	-41%	-48%	-35%	-30%	-21%	-14%	0%	8%
	Mixed	-37%	-30%	-33%	-25%	-27%	-13%	6%	-5%	0%	4%
	White	-11%	-6%	-4%	-5%	-5%	-3%	1%	-3%	0%	-6%
	Other	-76%	-61%	-32%	-61%	-46%	-46%	-12%	0%	0%	2%
20 and over	Asian	-39%	-28%	-30%	-19%	-18%	-2%	-1%	-2%	0%	2%
	Black	-31%	-26%	-15%	-23%	-14%	-2%	-7%	-1%	0%	-3%
	Mixed	-46%	-40%	-39%	-40%	-40%	-23%	-23%	-13%	0%	1%
	White	-34%	-28%	-31%	-26%	-22%	-4%	-2%	-4%	0%	-4%
	Other	-68%	-63%	-51%	-43%	-41%	-14%	-20%	-28%	0%	23%
All ages	Asian	-33%	-27%	-24%	-21%	-19%	-10%	-7%	-5%	0%	1%
	Black	-42%	-36%	-28%	-32%	-26%	-15%	-14%	-7%	0%	-0%
	Mixed	-40%	-30%	-34%	-30%	-30%	-16%	-12%	-9%	0%	7%
	White	-11%	-9%	-11%	-9%	-7%	2%	2%	-0%	0%	-4%
	Other	-70%	-60%	-44%	-40%	-39%	-16%	-13%	-17%	0%	23%

Note: The percentage change is not recorded in the above table for groups with fewer than 10 applicants in that cycle or in the 2018 cycle.

D.10.17 Applicants by ethnic group: Wales
Difference between cycle and 2018 cycle

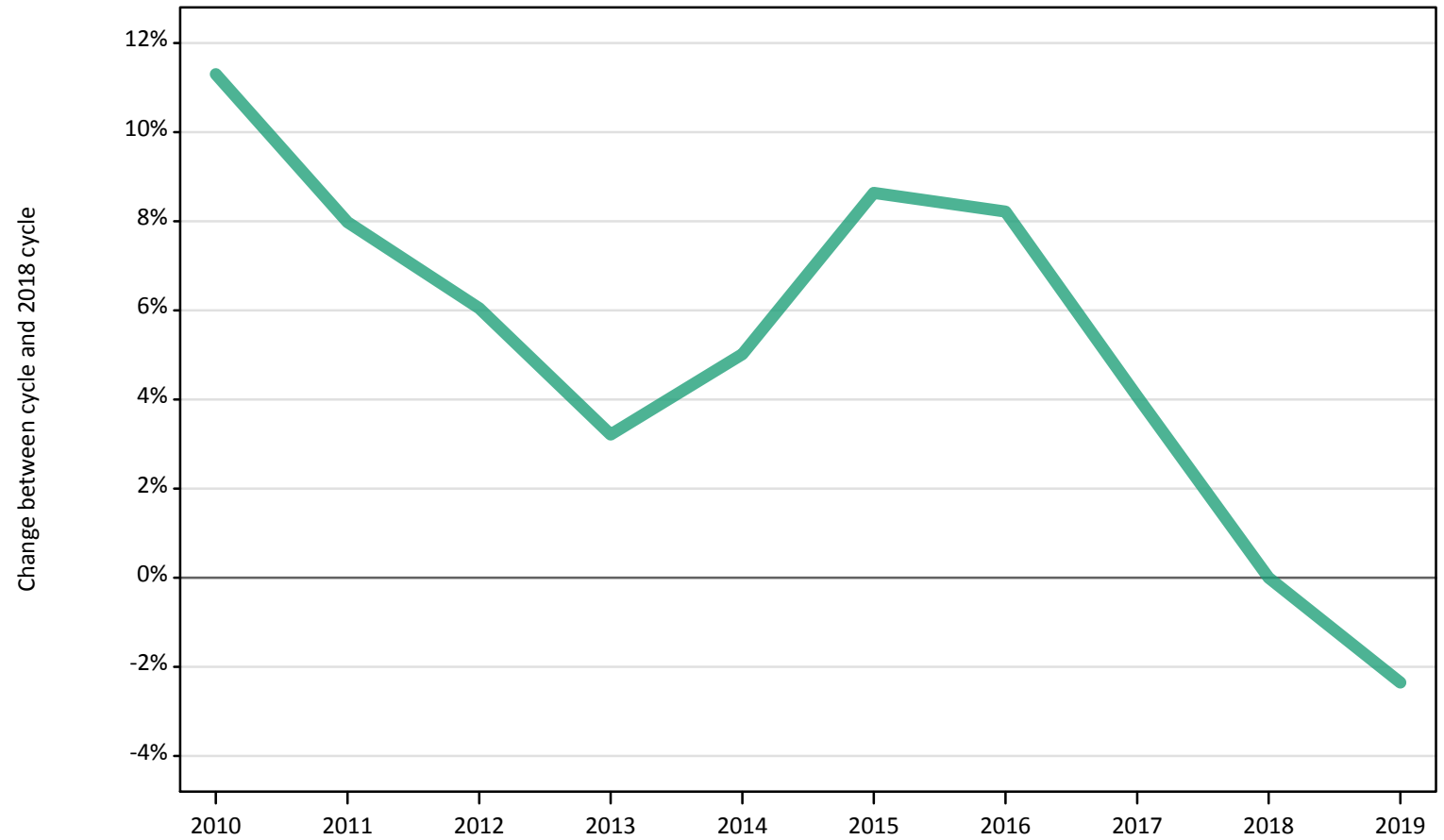
- Asian
- Black
- Mixed
- White
- Other



Note: The percentage change is not plotted in the above chart for groups with fewer than 500 applicants in any one cycle.

D.10.18 18 year old applicants by ethnic group: Wales
Difference between cycle and 2018 cycle

- Asian
- Black
- Mixed
- White
- Other



Note: The percentage change is not plotted in the above chart for groups with fewer than 500 applicants in any one cycle.

D.10.19 Applicants by age and ethnic group: Wales

Age group and ethnic group of applicant		2010	2011	2012	2013	2014	2015	2016	2017	2018	2019
Under 18	Asian	10	0	0	0	0	0	0	0	0	0
	Black	0	0	0	0	0	0	0	0	0	0
	Mixed	0	0	0	0	0	0	0	0	0	0
	White	40	30	20	30	20	10	20	10	20	20
	Other	0	0	0	0	0	0	0	0	0	0
18	Asian	330	300	320	310	410	400	450	450	530	520
	Black	50	50	80	70	100	90	110	110	120	140
	Mixed	190	210	200	210	230	280	270	240	290	320
	White	11,040	10,720	10,520	10,240	10,420	10,780	10,740	10,330	9,920	9,690
	Other	40	40	50	50	90	70	80	70	80	90
19	Asian	160	160	180	190	180	210	180	190	180	200
	Black	50	50	60	70	70	70	70	50	60	60
	Mixed	80	90	90	80	80	100	110	90	110	110
	White	3,160	3,520	3,370	3,340	3,460	3,350	3,510	3,050	2,950	2,880
	Other	20	20	30	40	40	40	40	40	30	50
20 and over	Asian	210	220	230	210	200	210	220	210	190	200
	Black	140	150	180	150	160	170	190	160	160	170
	Mixed	100	120	100	110	130	120	120	140	140	90
	White	5,080	5,460	5,320	5,220	5,270	4,960	4,850	4,320	4,160	4,150
	Other	40	30	50	40	60	50	50	40	60	70
All ages	Asian	700	690	730	710	800	820	850	850	910	920
	Black	230	250	320	290	320	330	370	330	330	370
	Mixed	370	430	390	400	450	500	500	470	530	530
	White	19,320	19,730	19,220	18,830	19,170	19,100	19,120	17,700	17,060	16,730
	Other	100	90	130	130	180	160	170	150	170	210

D.10.20 Applicants by age and ethnic group: Wales
Difference between cycle and 2018 cycle

Age group and ethnic group of applicant		2010	2011	2012	2013	2014	2015	2016	2017	2018	2019
Under 18	Asian										
	Black										
	Mixed										
	White	68%	50%	-23%	23%	-5%	-41%	0%	-55%	0%	-27%
	Other										
18	Asian	-38%	-44%	-40%	-42%	-22%	-26%	-16%	-16%	0%	-2%
	Black	-61%	-60%	-29%	-42%	-19%	-26%	-6%	-8%	0%	22%
	Mixed	-34%	-25%	-31%	-26%	-18%	-2%	-6%	-14%	0%	12%
	White	11%	8%	6%	3%	5%	9%	8%	4%	0%	-2%
	Other	-51%	-55%	-39%	-40%	6%	-20%	0%	-21%	0%	10%
19	Asian	-11%	-13%	1%	2%	1%	16%	-2%	2%	0%	10%
	Black	-20%	-9%	-2%	20%	21%	23%	25%	-4%	0%	-2%
	Mixed	-26%	-17%	-16%	-23%	-25%	-7%	7%	-17%	0%	8%
	White	7%	19%	14%	13%	17%	13%	19%	3%	0%	-3%
	Other	-43%	-36%	21%	32%	32%	36%	29%	25%	0%	86%
20 and over	Asian	8%	16%	20%	11%	5%	13%	18%	9%	0%	3%
	Black	-14%	-4%	10%	-6%	-3%	8%	18%	2%	0%	4%
	Mixed	-25%	-9%	-26%	-21%	-2%	-15%	-12%	4%	0%	-32%
	White	22%	31%	28%	25%	27%	19%	17%	4%	0%	-0%
	Other	-27%	-46%	-18%	-23%	0%	-13%	-7%	-21%	0%	21%
All ages	Asian	-23%	-25%	-19%	-22%	-12%	-9%	-6%	-7%	0%	1%
	Black	-32%	-25%	-6%	-14%	-4%	-2%	11%	-3%	0%	10%
	Mixed	-29%	-19%	-26%	-24%	-15%	-6%	-5%	-10%	0%	-0%
	White	13%	16%	13%	10%	12%	12%	12%	4%	0%	-2%
	Other	-42%	-48%	-21%	-22%	8%	-7%	3%	-12%	0%	27%

Note: The percentage change is not recorded in the above table for groups with fewer than 10 applicants in that cycle or in the 2018 cycle.

D.10.21 Technical notes and definitions

Applicants have been able to submit applications for all 2019 courses since early September.

Applicants who submit their applications to UCAS by the January deadline are considered as 'on time' applicants for the large majority of courses offered through UCAS.

This statistical release covers all Main Scheme applicants who submit their applications to UCAS by the January deadline, including those who have applied for courses with a 15 October deadline. Counts of RPAs (records of prior acceptance) are not included.

Counts of the number of applicants reported have been rounded to the nearest 10 applicants, this may result in instances where totals do not equal the sum of the components. Proportional changes have been rounded to the nearest whole percentage point.

Age

This statistical release uses country-specific age definitions which align with the cut off points for school/college cohorts within the different administrations of the UK. For England and Wales ages are defined on the 31 August, for Northern Ireland on the 1 July and for Scotland on the 28 February the following year. Defining ages in this way matches the assignment of children to school cohorts. For applicants outside of the UK the cohort cut off for England and Wales has been used.

Applicant

A person who has made an application in the UCAS system during the cycle reported (including applications for deferred entry). Records of prior acceptance (RPAs) are excluded.

Application

An application to a course at a provider made by an applicant in the UCAS main scheme. Applicants may make up to five main scheme applications.

Country of provider

An applicant may be counted once for each provider country they have applied to in the main scheme. If an applicant has applied to providers in multiple countries then the applicant is counted once within each country of provider applied to.

Domicile

Declared area of permanent residence. The Channel Islands and the Isle of Man have been assigned as 'Not EU'.

Ethnic group

High level grouping of ethnic origin as declared by the applicant: 'Asian', 'Black', 'Mixed', 'White', 'Other', 'Unknown'.

First time applicant

An applicant that did not apply to the UCAS scheme in the previous cycle.

Main scheme

The main UCAS application scheme through which up to five providers/courses can be applied to. This opens in September and closes to new applications on 30 June the following year.

Reapplicant

An applicant that applied to the UCAS scheme in the previous cycle.

Sex

As declared by the applicant.

SIMD 2016

Scottish Index of Multiple Deprivation identifies small area concentrations of multiple deprivation across all of Scotland, providing a relative measure of deprivation among small areas (data zones). In this report, the SIMD 2016 has been used to group areas in each year in the times series.

POLAR4

Developed by HEFCE and classifies small areas across the UK into five groups, according to their level of young participation in HE. Each of these groups represents around 20 per cent of young people, and is ranked from quintile 1 (areas with the lowest young participation rates, considered as the most disadvantaged) to quintile 5 (highest young participation rates, considered most advantaged). POLAR4 is the most recent version of the POLAR classification, and is available for the first time in UCAS reporting since its launch in 2017.

Tariff Group of provider

Providers are grouped as higher, medium or lower tariff based on their average levels of attainment of their accepted applicants (summarised through UCAS Tariff points) in recent cycles. Each group of providers accounted for around a third of all UK 18 year old acceptances in recent cycles.

Subject group

The JACS3 classification used to classify courses into subject groups. With the introduction of HECoS for the 2019 cycle, new courses that were classified using HECoS instead of JACS have been allocated modelled JACS3 values.

Subject group (HECoS)

The CAH classification used to categorise HECoS course subject codes into subject groups. A course may be associated with up to 5 individual subject codes and their respective percentage weight. For this analysis, application totals for subject groups have been calculated by apportioning course applications as weighted by subject group.