

# January Deadline Analysis: Age

## Applicants by age at the 15 January deadline

### D.9.1 Applicants by UK country of domicile and age group, 2019

All age groups

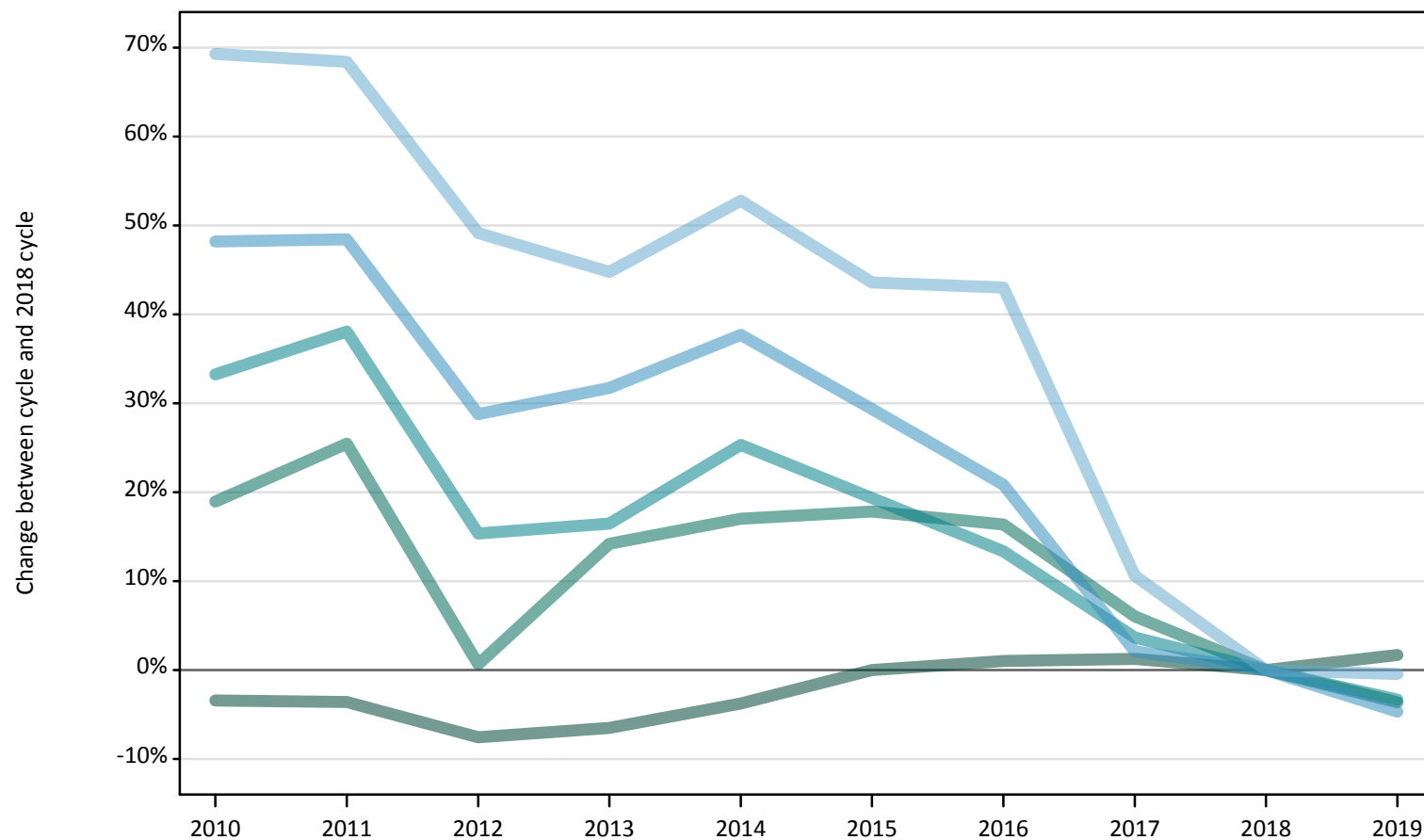
Country of Domicile	Age group				
	Under 18	18	19	20-24	25-29
England	740	231,920	66,650	45,910	11,610
Northern Ireland	40	10,470	2,910	3,150	580
Scotland	730	17,480	5,360	10,620	3,960
Wales	20	10,820	3,310	2,680	860

### D.9.2 Proportions of 18 year olds by UK country of domicile

Domicile and age group		2019
England	18	38.8%
Northern Ireland	18	46.8%
Scotland	18	32.5%
Wales	18	32.2%

**D.9.3 Applicants by domicile and age: England**  
Selected age groups: Difference between cycle and 2018 cycle

- 18
- 19
- 20
- 21-24
- 25 and over



Note: The percentage change is not plotted in the above chart for groups with fewer than 500 applicants in any one cycle.

#### D.9.4 Applicants by domicile and age: England

All age groups

Domicile and age group		2010	2011	2012	2013	2014	2015	2016	2017	2018	2019
England	Under 18	1,210	1,080	850	800	860	900	890	810	800	740
	18	220,200	219,830	210,790	213,190	219,420	228,060	230,360	230,870	228,000	231,920
	19	82,250	86,740	69,600	78,950	80,900	81,480	80,470	73,310	69,140	66,650
	20	27,470	28,460	23,780	24,010	25,830	24,600	23,370	21,370	20,610	19,930
	21-24	40,380	40,450	35,100	35,900	37,520	35,250	32,930	27,830	27,250	25,980
	25 and over	48,490	48,240	42,730	41,480	43,760	41,130	40,970	31,690	28,650	28,520
	All ages	419,990	424,800	382,840	394,330	408,300	411,420	408,990	385,870	374,440	373,730

#### D.9.5 Applicants by domicile and age: England

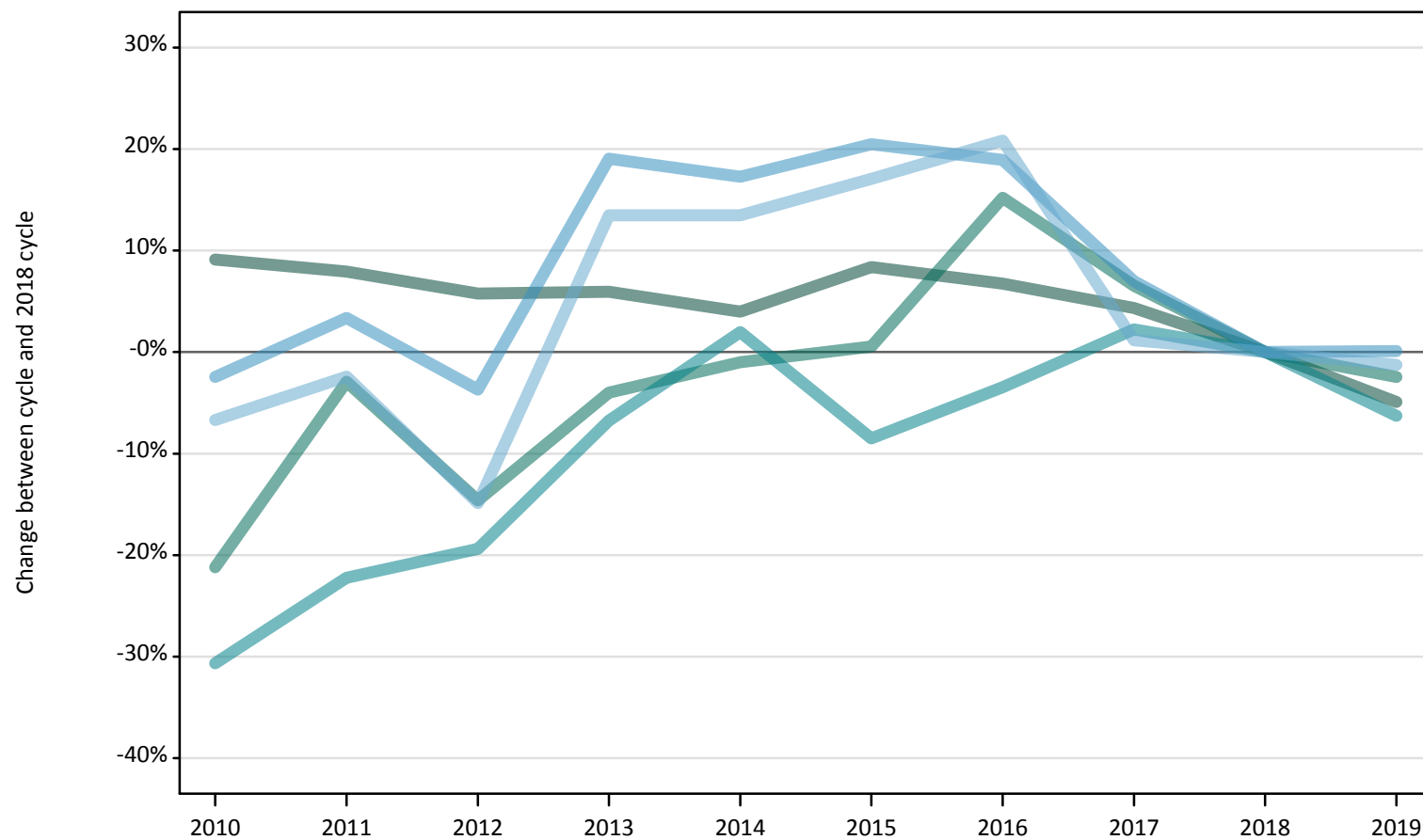
All age groups: Difference between cycle and 2018 cycle

Domicile and age group		2010	2011	2012	2013	2014	2015	2016	2017	2018	2019
England	Under 18	52%	36%	6%	1%	8%	13%	12%	2%	0%	-7%
	18	-3%	-4%	-8%	-6%	-4%	0%	1%	1%	0%	2%
	19	19%	25%	1%	14%	17%	18%	16%	6%	0%	-4%
	20	33%	38%	15%	16%	25%	19%	13%	4%	0%	-3%
	21-24	48%	48%	29%	32%	38%	29%	21%	2%	0%	-5%
	25 and over	69%	68%	49%	45%	53%	44%	43%	11%	0%	-0%
	All ages	12%	13%	2%	5%	9%	10%	9%	3%	0%	-0%

Note: The percentage change is not recorded in the above table for groups with fewer than 10 applicants in that cycle or in the 2018 cycle.

**D.9.6 Applicants by domicile and age: Northern Ireland**  
Selected age groups: Difference between cycle and 2018 cycle

- 18
- 19
- 20
- 21-24
- 25 and over



Note: The percentage change is not plotted in the above chart for groups with fewer than 500 applicants in any one cycle.

### D.9.7 Applicants by domicile and age: Northern Ireland

All age groups

Domicile and age group		2010	2011	2012	2013	2014	2015	2016	2017	2018	2019
Northern Ireland	Under 18	50	50	50	30	30	40	40	30	30	40
	18	12,020	11,890	11,650	11,670	11,450	11,940	11,760	11,500	11,020	10,470
	19	2,350	2,900	2,550	2,870	2,950	3,000	3,440	3,180	2,980	2,910
	20	1,030	1,150	1,190	1,380	1,510	1,360	1,430	1,510	1,480	1,390
	21-24	1,720	1,820	1,690	2,090	2,060	2,120	2,090	1,880	1,760	1,760
	25 and over	1,270	1,330	1,160	1,540	1,540	1,590	1,640	1,380	1,360	1,340
	All ages	18,440	19,130	18,290	19,590	19,550	20,040	20,400	19,470	18,630	17,910

### D.9.8 Applicants by domicile and age: Northern Ireland

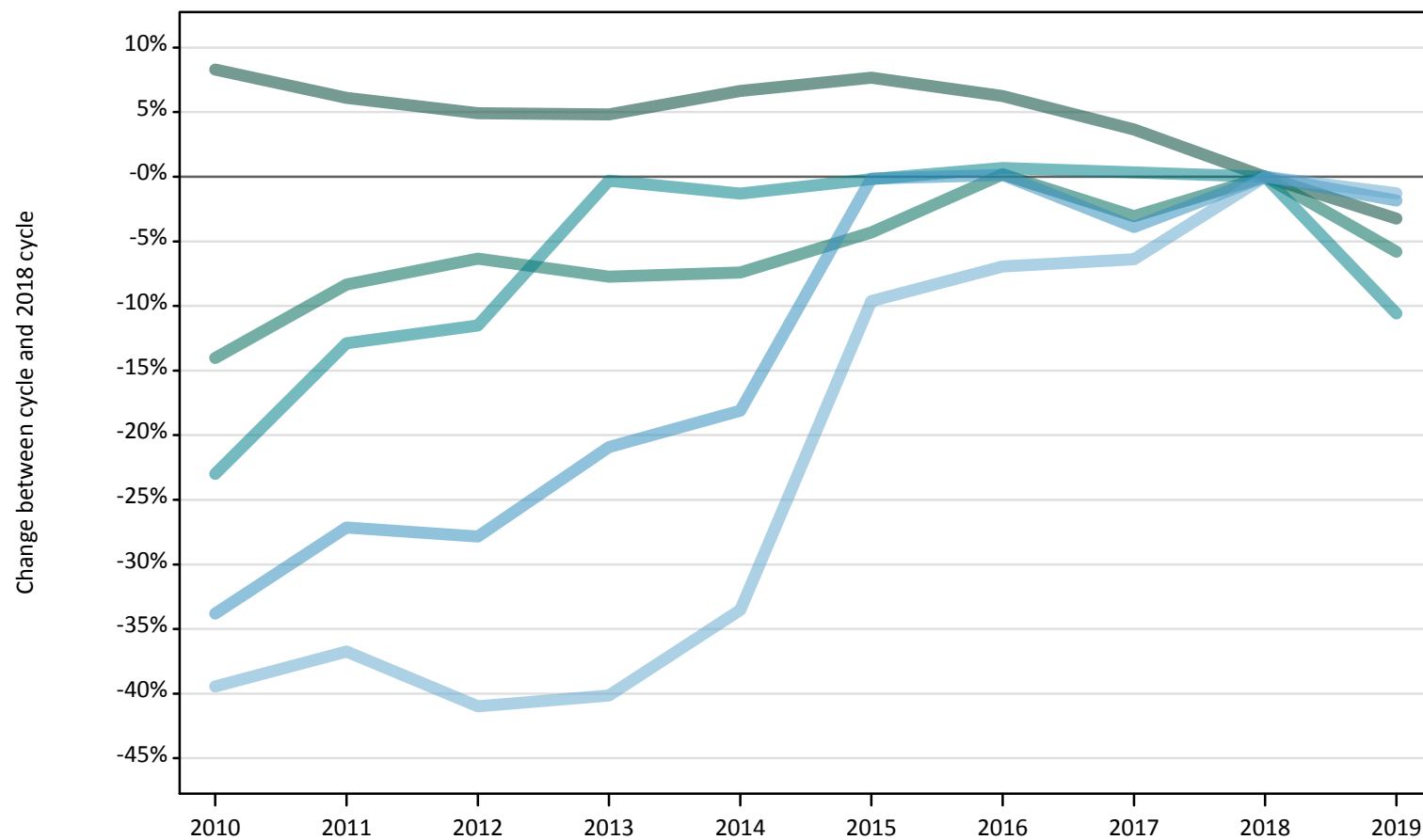
All age groups: Difference between cycle and 2018 cycle

Domicile and age group		2010	2011	2012	2013	2014	2015	2016	2017	2018	2019
Northern Ireland	Under 18	83%	66%	72%	17%	-7%	21%	38%	-14%	0%	21%
	18	9%	8%	6%	6%	4%	8%	7%	4%	0%	-5%
	19	-21%	-3%	-15%	-4%	-1%	1%	15%	7%	0%	-2%
	20	-31%	-22%	-19%	-7%	2%	-9%	-3%	2%	0%	-6%
	21-24	-2%	3%	-4%	19%	17%	20%	19%	7%	0%	0%
	25 and over	-7%	-2%	-15%	13%	13%	17%	21%	1%	0%	-1%
	All ages	-1%	3%	-2%	5%	5%	8%	10%	5%	0%	-4%

Note: The percentage change is not recorded in the above table for groups with fewer than 10 applicants in that cycle or in the 2018 cycle.

**D.9.9 Applicants by domicile and age: Scotland**  
Selected age groups: Difference between cycle and 2018 cycle

- 18
- 19
- 20
- 21-24
- 25 and over



Note: The percentage change is not plotted in the above chart for groups with fewer than 500 applicants in any one cycle.

### D.9.10 Applicants by domicile and age: Scotland

All age groups

Domicile and age group		2010	2011	2012	2013	2014	2015	2016	2017	2018	2019
Scotland	Under 18	920	870	780	660	650	700	720	740	730	730
	18	19,560	19,160	18,950	18,930	19,260	19,440	19,190	18,720	18,060	17,480
	19	4,890	5,220	5,330	5,250	5,270	5,450	5,700	5,520	5,690	5,360
	20	2,820	3,190	3,240	3,650	3,610	3,650	3,680	3,670	3,660	3,270
	21-24	4,960	5,460	5,400	5,920	6,130	7,480	7,500	7,200	7,490	7,350
	25 and over	5,620	5,870	5,470	5,550	6,160	8,380	8,630	8,680	9,270	9,160
	All ages	38,760	39,760	39,170	39,950	41,080	45,100	45,420	44,530	44,900	43,340

### D.9.11 Applicants by domicile and age: Scotland

All age groups: Difference between cycle and 2018 cycle

Domicile and age group		2010	2011	2012	2013	2014	2015	2016	2017	2018	2019
Scotland	Under 18	27%	20%	7%	-10%	-11%	-5%	-1%	2%	0%	0%
	18	8%	6%	5%	5%	7%	8%	6%	4%	0%	-3%
	19	-14%	-8%	-6%	-8%	-7%	-4%	0%	-3%	0%	-6%
	20	-23%	-13%	-12%	-0%	-1%	-0%	1%	0%	0%	-11%
	21-24	-34%	-27%	-28%	-21%	-18%	-0%	0%	-4%	0%	-2%
	25 and over	-39%	-37%	-41%	-40%	-34%	-10%	-7%	-6%	0%	-1%
	All ages	-14%	-11%	-13%	-11%	-9%	0%	1%	-1%	0%	-3%

Note: The percentage change is not recorded in the above table for groups with fewer than 10 applicants in that cycle or in the 2018 cycle.

**D.9.12 Applicants by domicile and age: Wales**  
Selected age groups: Difference between cycle and 2018 cycle

- 18
- 19
- 20
- 21-24
- 25 and over



Note: The percentage change is not plotted in the above chart for groups with fewer than 500 applicants in any one cycle.



### D.9.13 Applicants by domicile and age: Wales

All age groups

Domicile and age group		2010	2011	2012	2013	2014	2015	2016	2017	2018	2019
Wales	Under 18	50	50	30	40	30	20	30	10	30	20
	18	11,680	11,370	11,210	10,910	11,280	11,650	11,690	11,250	11,000	10,820
	19	3,480	3,850	3,740	3,740	3,850	3,780	3,930	3,440	3,340	3,310
	20	1,180	1,340	1,350	1,250	1,250	1,310	1,200	1,180	1,070	1,060
	21-24	2,070	2,150	2,140	2,130	2,160	1,980	2,010	1,720	1,640	1,630
	25 and over	2,350	2,540	2,410	2,380	2,440	2,260	2,270	2,020	2,040	2,020
	All ages	20,810	21,290	20,880	20,440	21,010	21,000	21,130	19,620	19,100	18,850

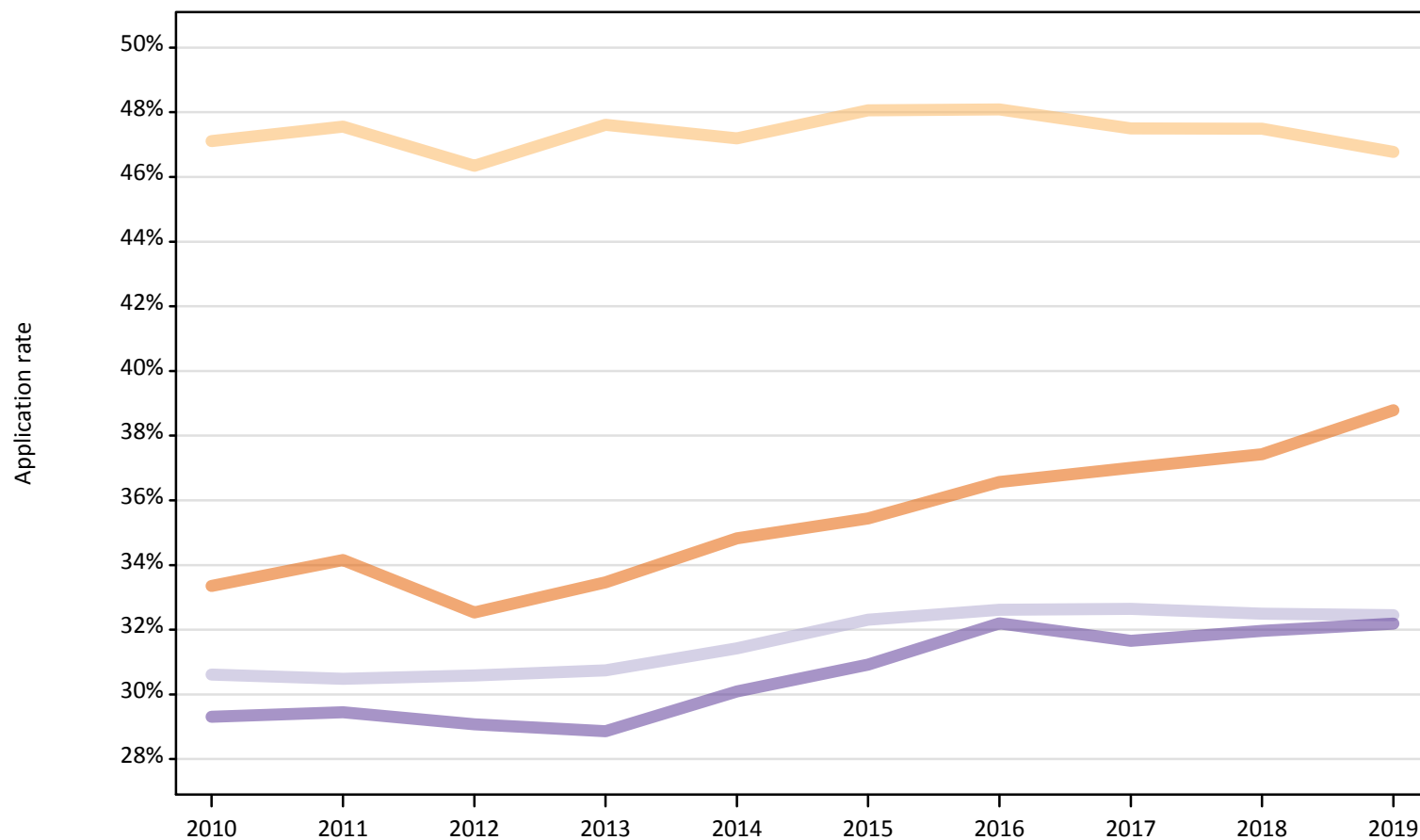
### D.9.14 Applicants by domicile and age: Wales

All age groups: Difference between cycle and 2018 cycle

Domicile and age group		2010	2011	2012	2013	2014	2015	2016	2017	2018	2019
Wales	Under 18	74%	67%	-4%	33%	0%	-26%	11%	-48%	0%	-19%
	18	6%	3%	2%	-1%	3%	6%	6%	2%	0%	-2%
	19	4%	15%	12%	12%	15%	13%	18%	3%	0%	-1%
	20	10%	25%	26%	17%	17%	23%	13%	11%	0%	-1%
	21-24	27%	32%	31%	30%	32%	21%	23%	5%	0%	-0%
	25 and over	15%	25%	18%	17%	20%	11%	11%	-1%	0%	-1%
	All ages	9%	11%	9%	7%	10%	10%	11%	3%	0%	-1%

Note: The percentage change is not recorded in the above table for groups with fewer than 10 applicants in that cycle or in the 2018 cycle.

**D.9.15 Application rates for 18 year olds by UK country of domicile**  
18 year old applicants as a proportion of the 18 year old population



**D.9.16 Application rates for 18 year olds by UK country of domicile**  
18 year old applicants as a proportion of the 18 year old population

Domicile and age group		2010	2011	2012	2013	2014	2015	2016	2017	2018	2019
England	18	33.4%	34.2%	32.5%	33.5%	34.8%	35.4%	36.6%	37.0%	37.4%	38.8%
Northern Ireland	18	47.1%	47.6%	46.3%	47.6%	47.2%	48.1%	48.1%	47.5%	47.5%	46.8%
Scotland	18	30.6%	30.5%	30.6%	30.7%	31.4%	32.3%	32.6%	32.6%	32.5%	32.5%
Wales	18	29.3%	29.5%	29.1%	28.9%	30.1%	30.9%	32.2%	31.7%	32.0%	32.2%

### D.9.17 Technical notes and definitions

Applicants have been able to submit applications for all 2019 courses since early September.

Applicants who submit their applications to UCAS by the January deadline are considered as 'on time' applicants for the large majority of courses offered through UCAS.

This statistical release covers all Main Scheme applicants who submit their applications to UCAS by the January deadline, including those who have applied for courses with a 15 October deadline. Counts of RPAs (records of prior acceptance) are not included.

Counts of the number of applicants reported have been rounded to the nearest 10 applicants, this may result in instances where totals do not equal the sum of the components. Proportional changes have been rounded to the nearest whole percentage point.

In Scotland there is a substantial component (around one third of young full-time higher education) where admissions are not processed through UCAS. Consequently, for Scotland, this report reflects the trends in applications that are recruited through UCAS and not, as elsewhere in the UK, full-time undergraduate study in general.

#### Age

This statistical release uses country-specific age definitions which align with the cut off points for school/college cohorts within the different administrations of the UK. For England and Wales ages are defined on the 31 August, for Northern Ireland on the 1 July and for Scotland on the 28 February the following year. Defining ages in this way matches the assignment of children to school cohorts. For applicants outside of the UK the cohort cut off for England and Wales has been used.

#### Applicant

A person who has made an application in the UCAS system during the cycle reported (including applications for deferred entry). Records of prior acceptance (RPAs) are excluded.

#### Application

An application to a course at a provider made by an applicant in the UCAS main scheme. Applicants may make up to five main scheme applications.

#### Country of provider

An applicant may be counted once for each provider country they have applied to in the main scheme. If an applicant has applied to providers in multiple countries then the applicant is counted once within each country of provider applied to.

#### Domicile

Declared area of permanent residence. The Channel Islands and the Isle of Man have been assigned as 'Not EU'.

#### Ethnic group

High level grouping of ethnic origin as declared by the applicant: 'Asian', 'Black', 'Mixed', 'White', 'Other', 'Unknown'.

#### First time applicant

An applicant that did not apply to the UCAS scheme in the previous cycle.

#### Main scheme

The main UCAS application scheme through which up to five providers/courses can be applied to. This opens in September and closes to new applications on 30 June the following year.

### Reapplicant

An applicant that applied to the UCAS scheme in the previous cycle.

### Sex

As declared by the applicant.

### SIMD 2016

Scottish Index of Multiple Deprivation identifies small area concentrations of multiple deprivation across all of Scotland, providing a relative measure of deprivation among small areas (data zones). In this report, the SIMD 2016 has been used to group areas in each year in the times series.

### POLAR4

Developed by HEFCE and classifies small areas across the UK into five groups, according to their level of young participation in HE. Each of these groups represents around 20 per cent of young people, and is ranked from quintile 1 (areas with the lowest young participation rates, considered as the most disadvantaged) to quintile 5 (highest young participation rates, considered most advantaged). POLAR4 is the most recent version of the POLAR classification, and is available for the first time in UCAS reporting since its launch in 2017.

### Tariff Group of provider

Providers are grouped as higher, medium or lower tariff based on their average levels of attainment of their accepted applicants (summarised through UCAS Tariff points) in recent cycles. Each group of providers accounted for around a third of all UK 18 year old acceptances in recent cycles.

### Subject group

The JACS3 classification used to classify courses into subject groups. With the introduction of HECoS for the 2019 cycle, new courses that were classified using HECoS instead of JACS have been allocated modelled JACS3 values.

### Subject group (HECoS)

The CAH classification used to categorise HECoS course subject codes into subject groups. A course may be associated with up to 5 individual subject codes and their respective percentage weight. For this analysis, application totals for subject groups have been calculated by apportioning course applications as weighted by subject group.