

January Deadline Analysis: Sex and age

Nursing applicants by sex and age at the 15 January deadline

DB.2.1 Nursing applicants by sex: All domiciles
Difference between cycle and 2018 cycle

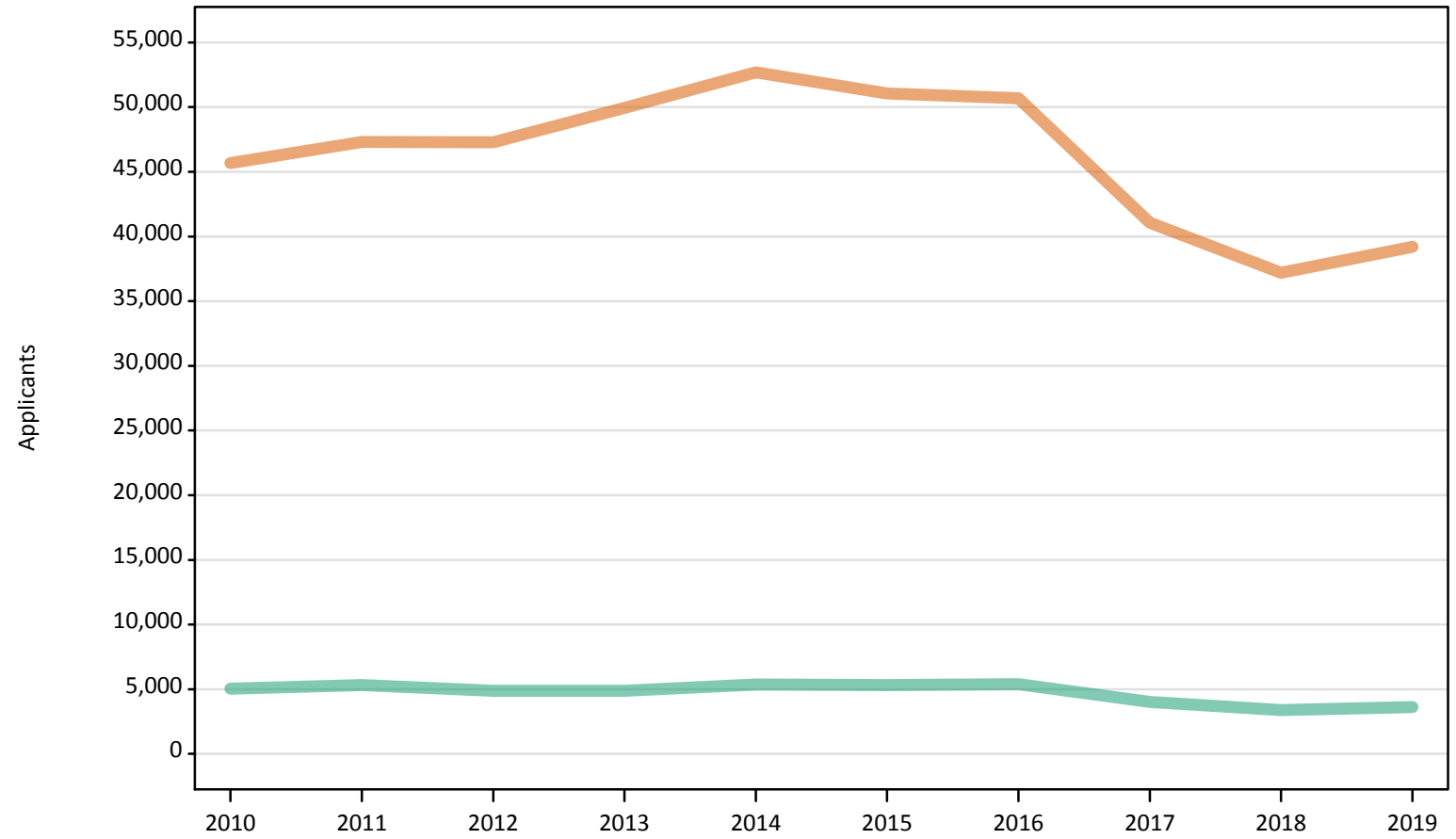
Men
Women



Note: The percentage change is not plotted in the above chart for groups with fewer than 500 applicants in any one cycle.

DB.2.2 Nursing applicants by sex: All domiciles

Men
Women



DB.2.3 Nursing applicants by age and sex: All domiciles

Age group and sex		2010	2011	2012	2013	2014	2015	2016	2017	2018	2019
Under 18	Women	330	220	130	140	150	120	120	120	100	140
	Men	20	10	10	10	10	10	10	10	10	10
18	Women	10,330	10,600	11,250	11,610	11,790	12,160	11,930	10,880	10,580	11,550
	Men	550	550	530	520	550	560	550	510	530	620
19	Women	5,370	5,940	5,610	6,440	6,740	6,410	6,500	5,370	4,800	5,320
	Men	370	430	390	420	440	460	440	360	330	350
20-24	Women	11,970	12,310	12,540	13,520	14,440	13,620	12,640	9,940	8,770	8,680
	Men	1,170	1,270	1,140	1,140	1,290	1,190	1,140	830	730	780
25-29	Women	6,500	6,840	6,770	7,230	7,780	7,500	7,520	5,490	4,720	4,850
	Men	870	890	800	900	910	870	850	630	500	480
30-34	Women	4,260	4,590	4,440	4,630	4,870	4,530	4,690	3,580	3,200	3,310
	Men	680	730	660	670	680	650	690	450	330	330
35 and over	Women	6,920	6,810	6,540	6,380	6,930	6,730	7,280	5,700	5,050	5,350
	Men	1,380	1,450	1,350	1,240	1,470	1,580	1,730	1,260	970	1,040
All ages	Women	45,680	47,310	47,280	49,950	52,680	51,070	50,680	41,070	37,210	39,200
	Men	5,040	5,330	4,880	4,890	5,360	5,320	5,400	4,020	3,400	3,620

DB.2.4 Nursing applicants by age and sex: All domiciles

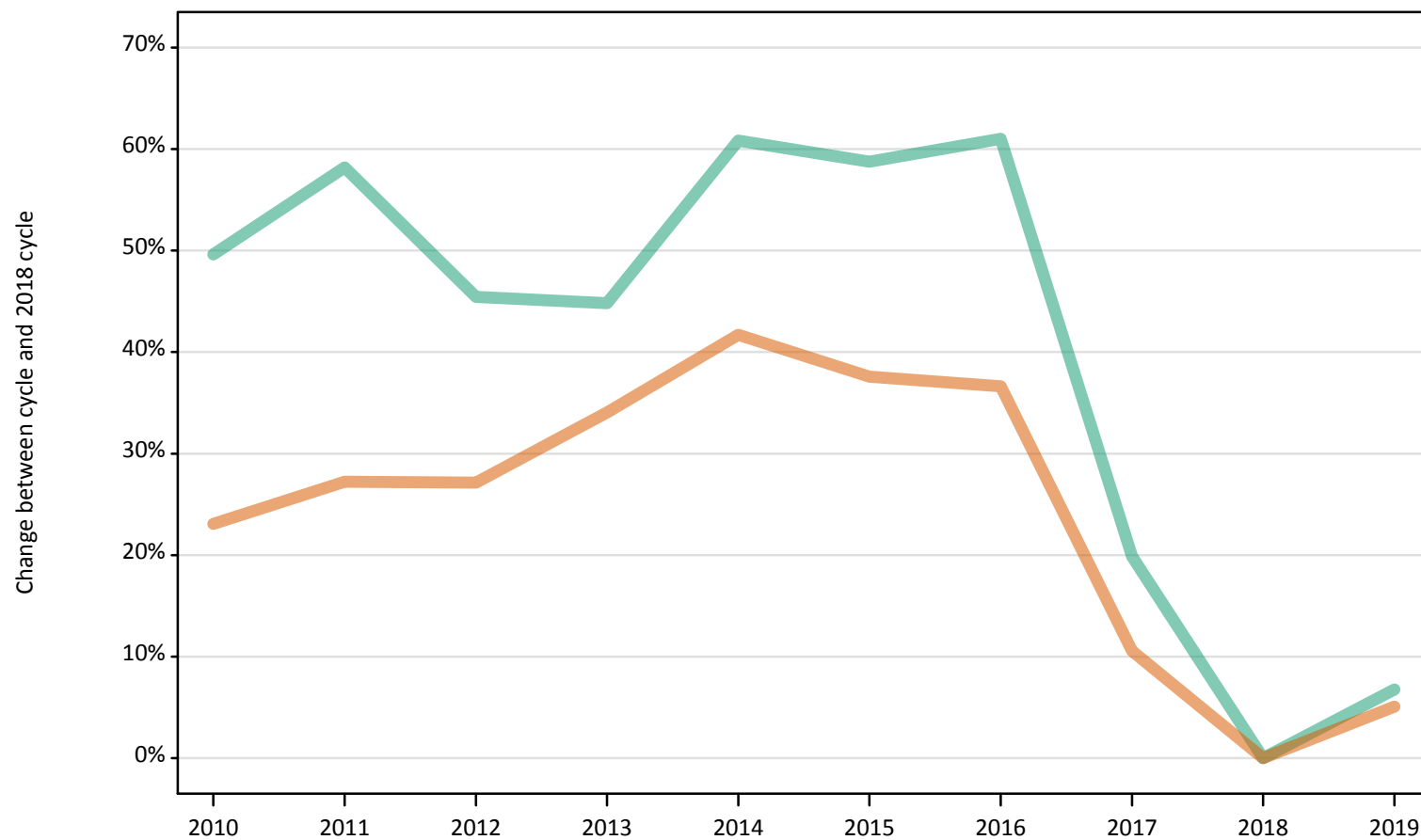
Difference between cycle and 2018 cycle

Age group and sex		2010	2011	2012	2013	2014	2015	2016	2017	2018	2019
Under 18	Women	229%	123%	30%	37%	46%	24%	23%	18%	0%	38%
	Men	280%	160%	100%	60%	40%	140%	20%	60%	0%	60%
18	Women	-2%	0%	6%	10%	11%	15%	13%	3%	0%	9%
	Men	4%	5%	-1%	-3%	4%	5%	3%	-5%	0%	18%
19	Women	12%	24%	17%	34%	41%	34%	36%	12%	0%	11%
	Men	12%	28%	16%	27%	33%	37%	32%	7%	0%	6%
20-24	Women	37%	40%	43%	54%	65%	55%	44%	13%	0%	-1%
	Men	60%	74%	56%	55%	77%	63%	56%	13%	0%	7%
25-29	Women	38%	45%	44%	53%	65%	59%	59%	16%	0%	3%
	Men	75%	79%	61%	80%	84%	75%	71%	26%	0%	-3%
30-34	Women	33%	44%	39%	45%	52%	42%	46%	12%	0%	3%
	Men	107%	120%	101%	103%	106%	97%	109%	36%	0%	1%
35 and over	Women	37%	35%	29%	26%	37%	33%	44%	13%	0%	6%
	Men	42%	49%	39%	28%	51%	63%	78%	29%	0%	6%
All ages	Women	23%	27%	27%	34%	42%	37%	36%	10%	0%	5%
	Men	48%	57%	44%	44%	58%	57%	59%	18%	0%	7%

Note: The percentage change is not recorded in the above table for groups with fewer than 10 applicants in that cycle or in the 2018 cycle.

DB.2.5 Nursing applicants by sex: UK
Difference between cycle and 2018 cycle

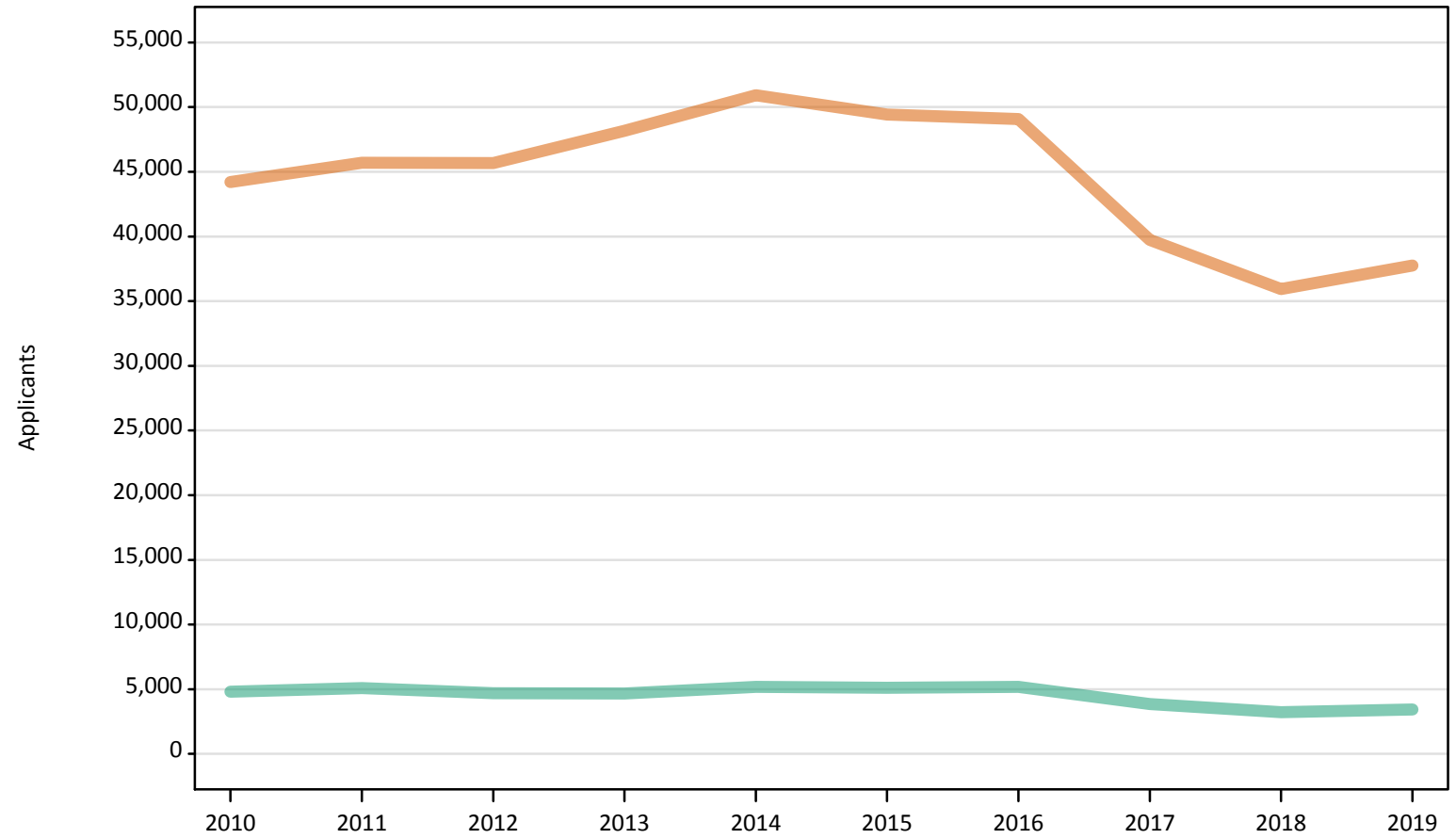
Men
Women



Note: The percentage change is not plotted in the above chart for groups with fewer than 500 applicants in any one cycle.

DB.2.6 Nursing applicants by sex: UK

Men
Women



DB.2.7 Nursing applicants by age and sex: UK

Age group and sex		2010	2011	2012	2013	2014	2015	2016	2017	2018	2019
Under 18	Women	250	140	60	60	70	60	60	60	40	60
	Men	20	10	10	0	0	0	0	0	10	0
18	Women	10,000	10,240	10,860	11,160	11,400	11,800	11,540	10,580	10,280	11,230
	Men	530	540	500	490	520	530	510	480	500	600
19	Women	5,030	5,610	5,260	6,050	6,330	6,030	6,120	5,050	4,500	4,970
	Men	350	400	370	400	420	420	410	330	300	330
20-24	Women	11,560	11,840	12,080	12,970	13,880	13,110	12,160	9,510	8,370	8,270
	Men	1,100	1,190	1,080	1,070	1,230	1,130	1,080	780	690	740
25-29	Women	6,350	6,630	6,610	7,030	7,600	7,300	7,370	5,380	4,610	4,740
	Men	820	850	770	860	880	840	830	610	470	450
30-34	Women	4,180	4,520	4,370	4,570	4,800	4,480	4,640	3,520	3,130	3,230
	Men	650	690	640	650	660	630	670	430	300	310
35 and over	Women	6,860	6,740	6,460	6,320	6,840	6,660	7,200	5,630	5,000	5,250
	Men	1,350	1,420	1,330	1,210	1,460	1,550	1,690	1,230	940	1,010
All ages	Women	44,220	45,710	45,680	48,160	50,910	49,430	49,080	39,730	35,930	37,750
	Men	4,820	5,090	4,680	4,660	5,180	5,110	5,180	3,860	3,220	3,440

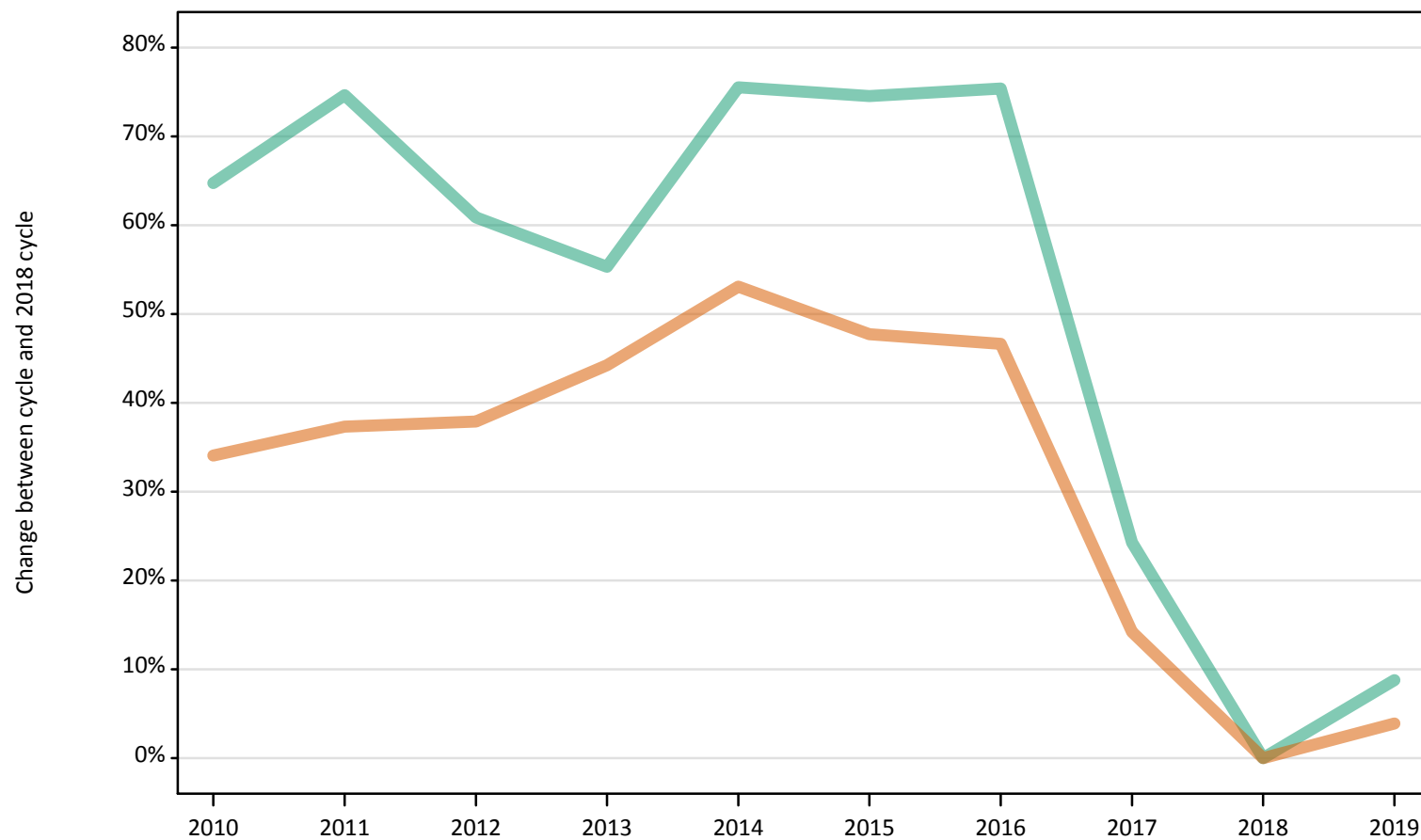
DB.2.8 Nursing applicants by age and sex: UK
 Difference between cycle and 2018 cycle

Age group and sex		2010	2011	2012	2013	2014	2015	2016	2017	2018	2019
Under 18	Women	474%	228%	30%	37%	51%	37%	35%	35%	0%	30%
	Men	260%	0%	20%						0%	
18	Women	-3%	-0%	6%	9%	11%	15%	12%	3%	0%	9%
	Men	6%	7%	-1%	-3%	5%	5%	2%	-5%	0%	21%
19	Women	12%	25%	17%	34%	41%	34%	36%	12%	0%	11%
	Men	14%	31%	20%	30%	37%	39%	34%	8%	0%	8%
20-24	Women	38%	41%	44%	55%	66%	57%	45%	14%	0%	-1%
	Men	58%	72%	55%	53%	78%	63%	55%	12%	0%	6%
25-29	Women	38%	44%	43%	53%	65%	58%	60%	17%	0%	3%
	Men	74%	80%	63%	82%	88%	79%	76%	29%	0%	-5%
30-34	Women	34%	44%	40%	46%	54%	43%	48%	13%	0%	3%
	Men	116%	126%	110%	114%	119%	108%	122%	43%	0%	3%
35 and over	Women	37%	35%	29%	26%	37%	33%	44%	13%	0%	5%
	Men	43%	51%	41%	29%	55%	65%	79%	31%	0%	7%
All ages	Women	23%	27%	27%	34%	42%	38%	37%	11%	0%	5%
	Men	50%	58%	45%	45%	61%	59%	61%	20%	0%	7%

Note: The percentage change is not recorded in the above table for groups with fewer than 10 applicants in that cycle or in the 2018 cycle.

DB.2.9 Nursing applicants by sex: England
Difference between cycle and 2018 cycle

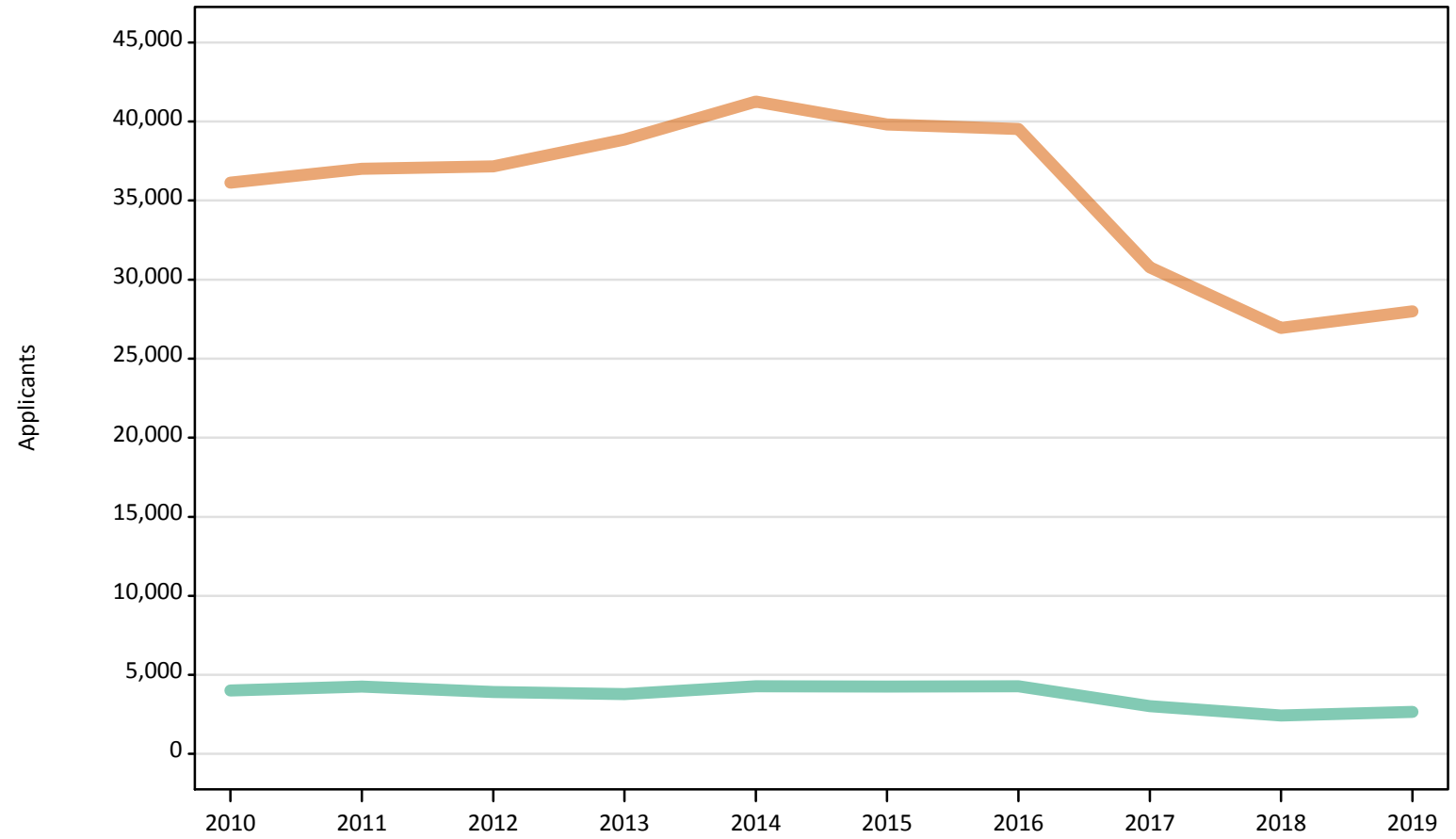
Men
Women



Note: The percentage change is not plotted in the above chart for groups with fewer than 500 applicants in any one cycle.

DB.2.10 Nursing applicants by sex: England

Men
Women



DB.2.11 Nursing applicants by age and sex: England

Age group and sex		2010	2011	2012	2013	2014	2015	2016	2017	2018	2019
Under 18	Women	160	80	10	20	20	20	10	10	10	10
	Men	10	10	0	0	0	0	0	0	0	0
18	Women	7,520	7,730	8,260	8,570	8,820	9,110	8,970	8,070	7,820	8,540
	Men	400	400	370	330	370	380	370	330	370	440
19	Women	4,080	4,530	4,200	4,880	5,170	4,930	4,940	3,980	3,440	3,710
	Men	290	330	300	310	330	360	300	250	230	250
20-24	Women	9,600	9,590	9,880	10,430	11,250	10,550	9,700	7,350	6,260	6,140
	Men	910	980	870	850	990	920	870	580	510	560
25-29	Women	5,330	5,470	5,470	5,730	6,100	5,820	5,940	4,070	3,310	3,410
	Men	670	690	620	680	720	680	650	440	320	310
30-34	Women	3,570	3,810	3,740	3,820	4,000	3,690	3,810	2,680	2,260	2,260
	Men	560	590	550	550	560	530	560	330	210	230
35 and over	Women	5,880	5,800	5,600	5,430	5,880	5,690	6,150	4,620	3,850	3,940
	Men	1,180	1,270	1,210	1,080	1,320	1,390	1,530	1,090	800	860
All ages	Women	36,130	37,010	37,160	38,870	41,250	39,810	39,520	30,780	26,950	28,000
	Men	4,020	4,260	3,920	3,790	4,280	4,260	4,280	3,030	2,440	2,650

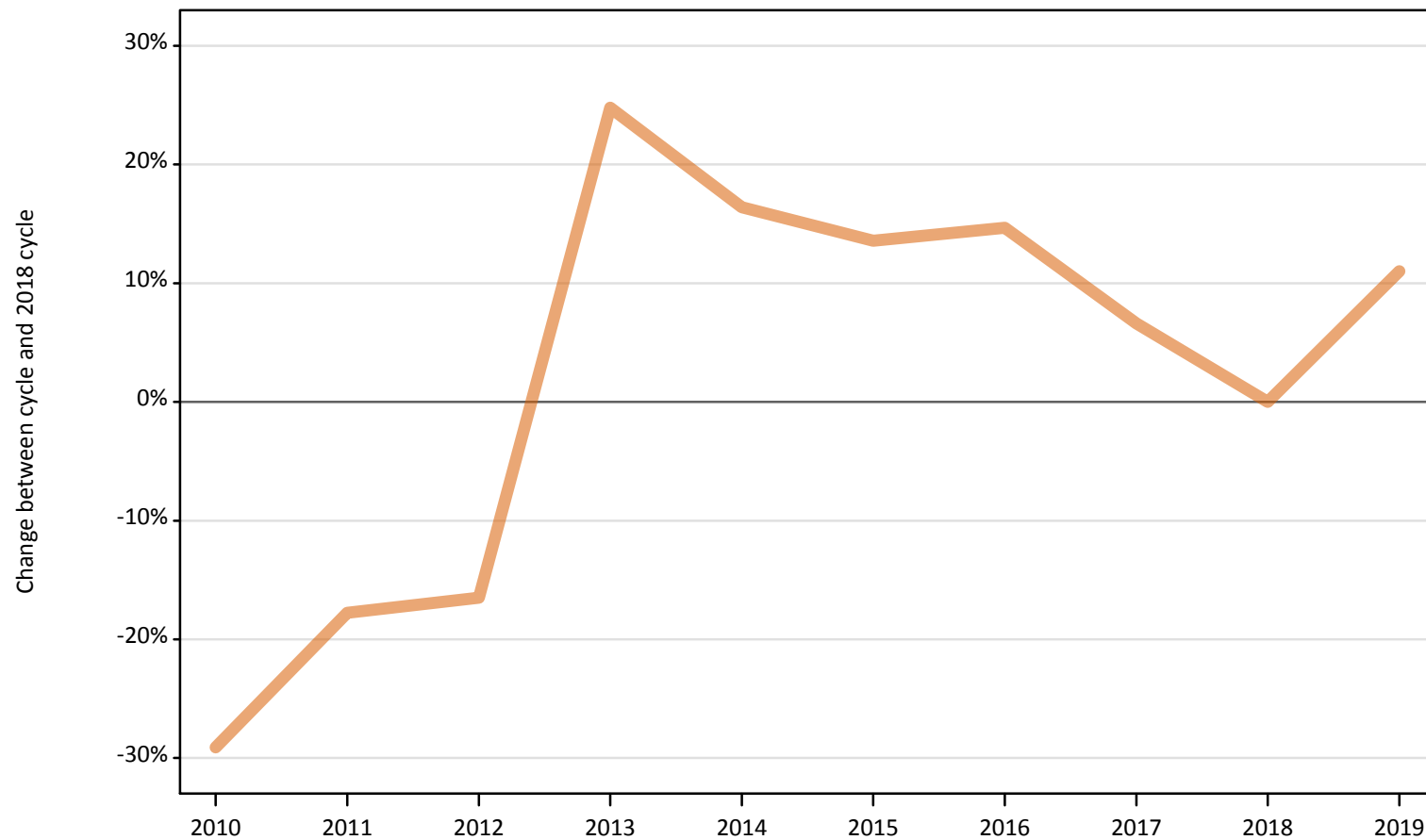
DB.2.12 Nursing applicants by age and sex: England
 Difference between cycle and 2018 cycle

Age group and sex		2010	2011	2012	2013	2014	2015	2016	2017	2018	2019
Under 18	Women	1689%	833%	56%	111%	111%	78%	22%	44%	0%	11%
	Men										
18	Women	-4%	-1%	6%	10%	13%	16%	15%	3%	0%	9%
	Men	7%	7%	0%	-12%	-2%	3%	-1%	-11%	0%	19%
19	Women	18%	32%	22%	42%	50%	43%	43%	16%	0%	8%
	Men	28%	47%	32%	37%	44%	57%	34%	12%	0%	12%
20-24	Women	53%	53%	58%	67%	80%	69%	55%	18%	0%	-2%
	Men	79%	92%	72%	66%	95%	80%	71%	13%	0%	10%
25-29	Women	61%	65%	65%	73%	85%	76%	80%	23%	0%	3%
	Men	108%	115%	94%	111%	125%	113%	104%	39%	0%	-2%
30-34	Women	58%	69%	66%	69%	77%	64%	69%	19%	0%	0%
	Men	168%	181%	162%	162%	168%	154%	166%	58%	0%	8%
35 and over	Women	53%	51%	45%	41%	53%	48%	60%	20%	0%	2%
	Men	47%	59%	51%	35%	65%	74%	91%	37%	0%	7%
All ages	Women	34%	37%	38%	44%	53%	48%	47%	14%	0%	4%
	Men	65%	75%	61%	55%	76%	75%	75%	24%	0%	9%

Note: The percentage change is not recorded in the above table for groups with fewer than 10 applicants in that cycle or in the 2018 cycle.

DB.2.13 Nursing applicants by sex: Northern Ireland
Difference between cycle and 2018 cycle

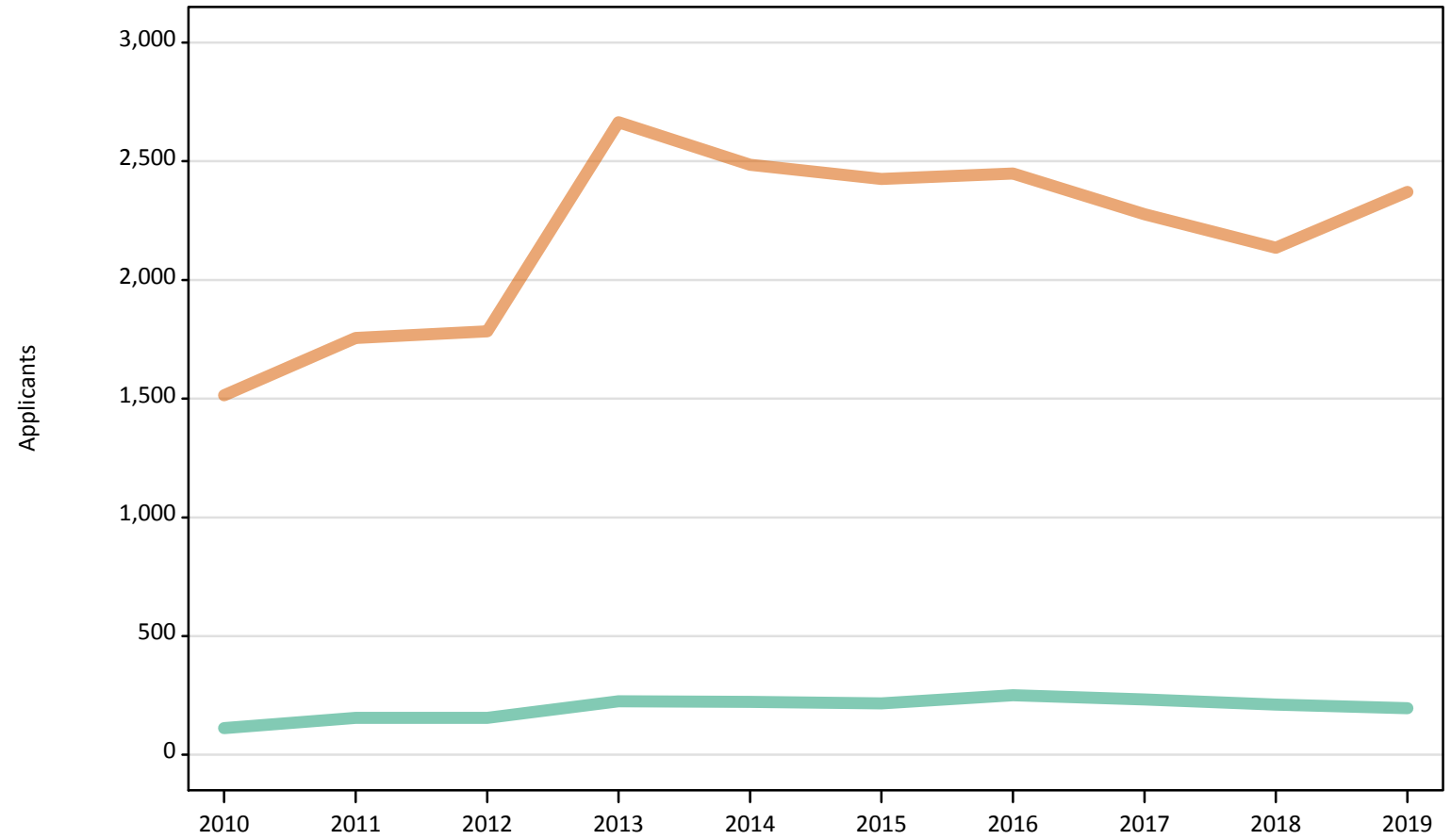
Men
Women



Note: The percentage change is not plotted in the above chart for groups with fewer than 500 applicants in any one cycle.

DB.2.14 Nursing applicants by sex: Northern Ireland

Men
Women



DB.2.15 Nursing applicants by age and sex: Northern Ireland

Age group and sex		2010	2011	2012	2013	2014	2015	2016	2017	2018	2019
Under 18	Women	0	0	0	0	0	0	0	0	0	0
	Men	0	0	0	0	0	0	0	0	0	0
18	Women	770	840	890	930	830	850	830	820	820	900
	Men	20	50	40	60	60	50	50	70	70	70
19	Women	200	260	270	400	370	330	370	350	310	380
	Men	10	10	30	30	30	30	40	40	30	30
20-24	Women	310	390	390	730	680	660	620	560	500	500
	Men	30	40	40	50	60	50	60	60	50	50
25-29	Women	120	140	130	290	310	290	300	230	220	220
	Men	20	20	20	40	40	30	40	30	30	20
30-34	Women	50	60	60	160	170	150	160	150	130	170
	Men	10	20	10	20	10	20	20	20	20	20
35 and over	Women	70	70	50	160	130	150	160	160	150	190
	Men	20	10	10	20	20	30	30	20	10	20
All ages	Women	1,510	1,760	1,780	2,660	2,490	2,430	2,450	2,280	2,140	2,370
	Men	110	160	160	230	220	220	250	230	210	200

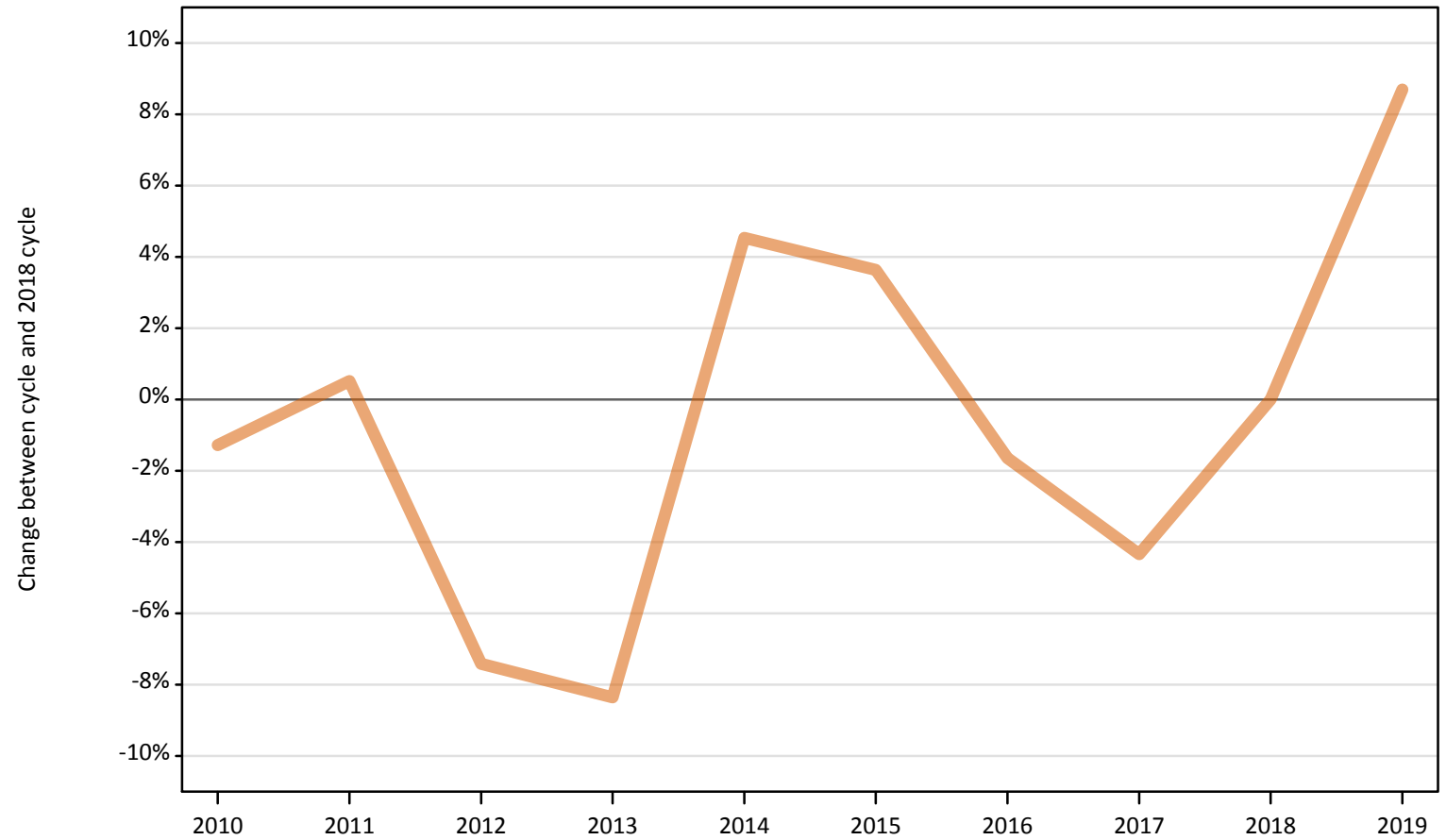
DB.2.16 Nursing applicants by age and sex: Northern Ireland
 Difference between cycle and 2018 cycle

Age group and sex		2010	2011	2012	2013	2014	2015	2016	2017	2018	2019
Under 18	Women										
	Men										
18	Women	-7%	2%	8%	13%	0%	3%	1%	-0%	0%	9%
	Men	-70%	-26%	-37%	-13%	-14%	-23%	-27%	0%	0%	-4%
19	Women	-38%	-16%	-15%	27%	18%	4%	18%	12%	0%	23%
	Men	-71%	-68%	-18%	-15%	-15%	-9%	24%	3%	0%	-21%
20-24	Women	-38%	-23%	-23%	44%	35%	30%	23%	12%	0%	0%
	Men	-33%	-14%	-29%	6%	31%	2%	27%	22%	0%	-2%
25-29	Women	-46%	-38%	-42%	29%	40%	31%	33%	5%	0%	1%
	Men	-29%	-21%	-25%	54%	29%	14%	54%	14%	0%	-21%
30-34	Women	-63%	-54%	-56%	26%	31%	17%	28%	14%	0%	33%
	Men	-38%	0%	-13%	25%	-25%	38%	44%	25%	0%	0%
35 and over	Women	-54%	-54%	-63%	11%	-9%	5%	13%	11%	0%	30%
	Men	36%	-14%	-7%	50%	50%	93%	114%	14%	0%	14%
All ages	Women	-29%	-18%	-16%	25%	16%	14%	15%	7%	0%	11%
	Men	-46%	-27%	-26%	7%	6%	2%	19%	10%	0%	-7%

Note: The percentage change is not recorded in the above table for groups with fewer than 10 applicants in that cycle or in the 2018 cycle.

DB.2.17 Nursing applicants by sex: Scotland
Difference between cycle and 2018 cycle

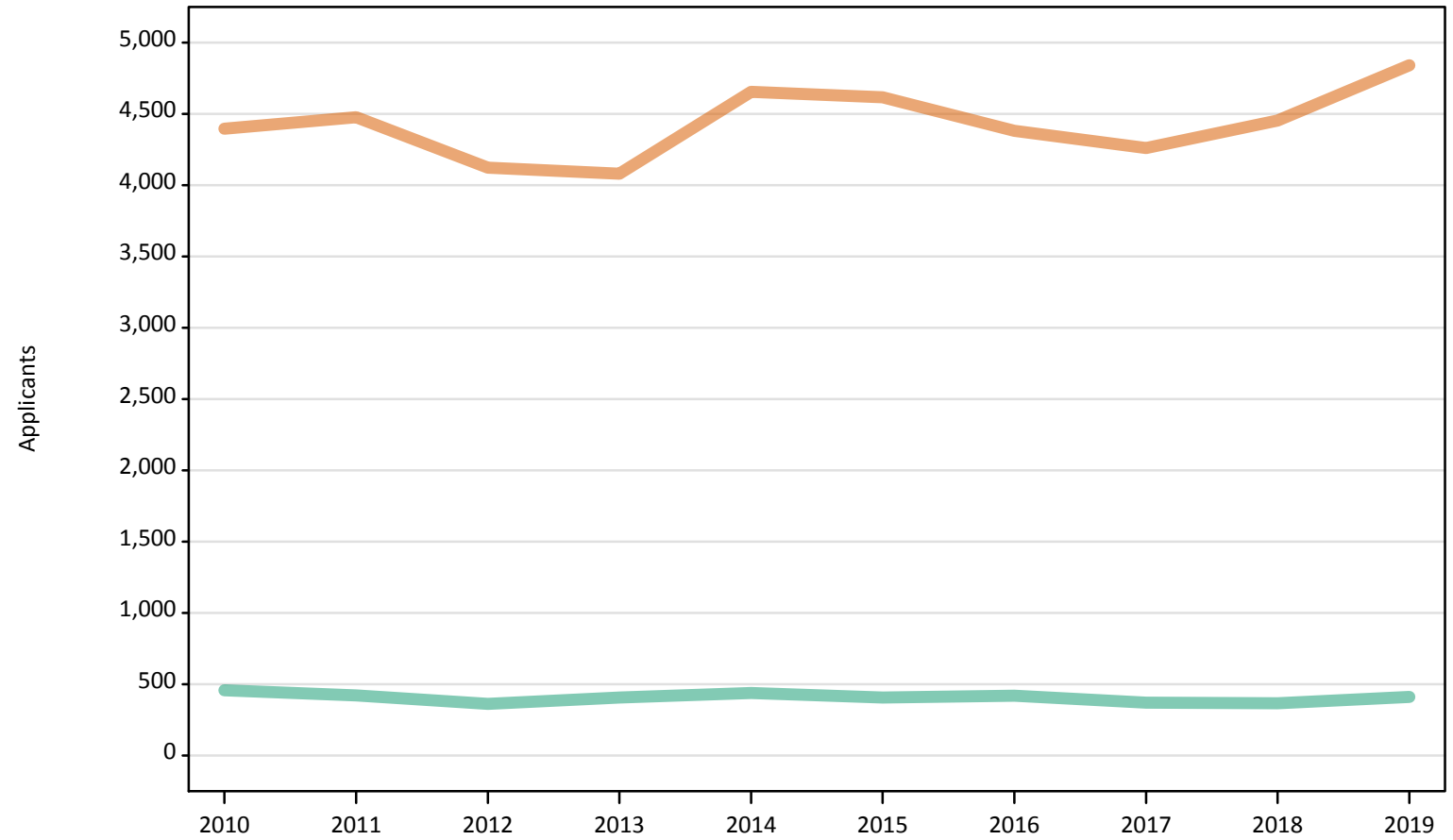
Men
Women



Note: The percentage change is not plotted in the above chart for groups with fewer than 500 applicants in any one cycle.

DB.2.18 Nursing applicants by sex: Scotland

Men
Women



DB.2.19 Nursing applicants by age and sex: Scotland

Age group and sex		2010	2011	2012	2013	2014	2015	2016	2017	2018	2019
Under 18	Women	80	60	40	40	50	40	40	40	30	40
	Men	0	0	0	0	0	0	0	0	0	0
18	Women	1,130	1,130	1,150	1,090	1,170	1,200	1,090	1,090	1,060	1,210
	Men	70	60	60	70	70	60	70	40	40	70
19	Women	510	490	500	490	510	480	490	420	440	520
	Men	30	30	20	40	40	20	40	20	20	30
20-24	Women	1,090	1,200	1,070	1,100	1,250	1,180	1,070	990	1,040	1,030
	Men	100	100	90	90	100	110	90	90	80	90
25-29	Women	580	610	590	580	740	750	700	680	700	710
	Men	90	90	70	80	80	80	80	90	90	80
30-34	Women	350	420	320	330	400	430	410	450	470	540
	Men	60	60	50	50	60	40	60	60	50	50
35 and over	Women	650	570	470	450	550	550	590	580	700	790
	Men	100	90	70	70	90	90	80	80	90	100
All ages	Women	4,400	4,480	4,120	4,080	4,660	4,620	4,380	4,260	4,450	4,840
	Men	460	420	360	410	440	410	420	370	370	410

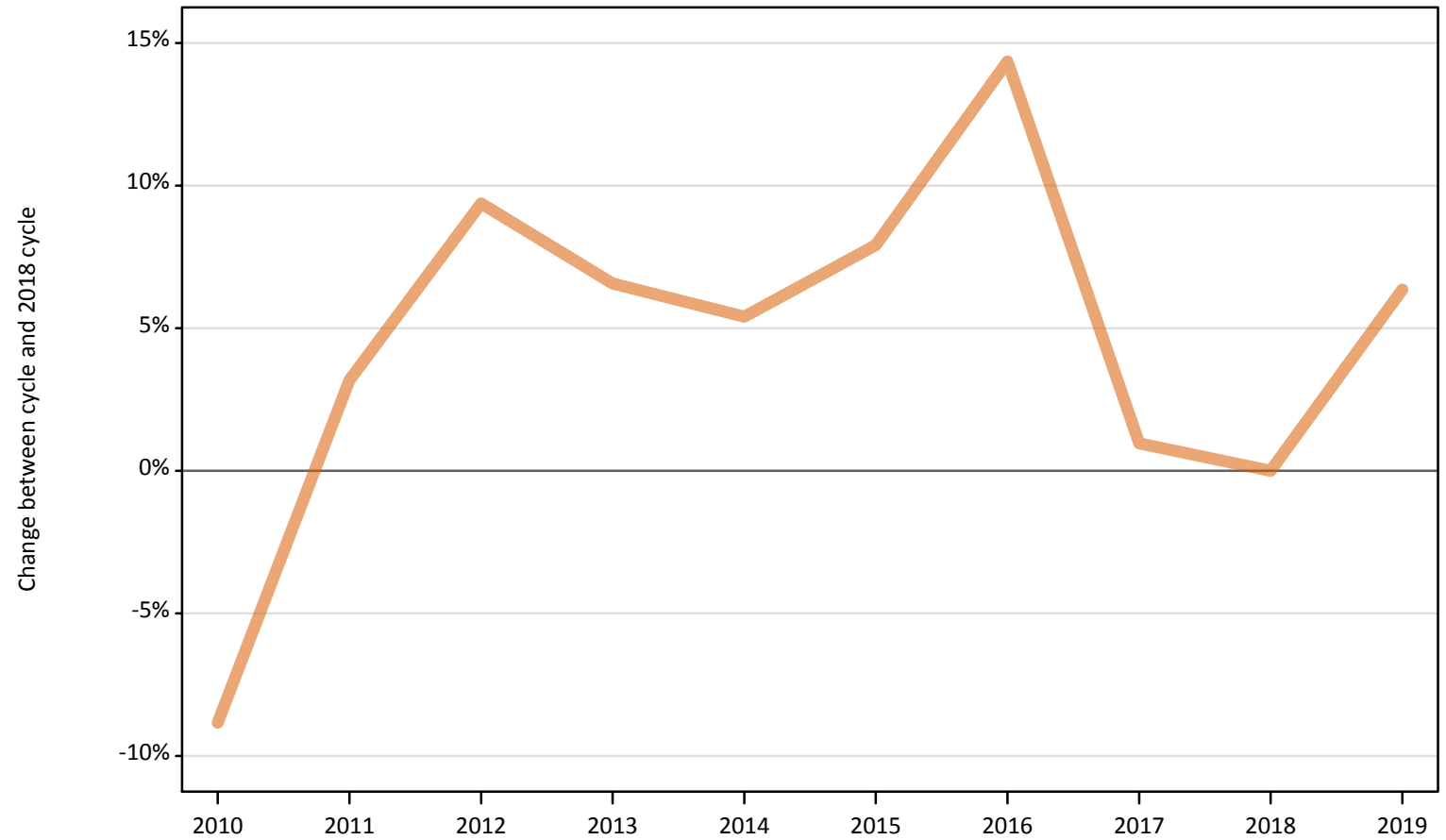
DB.2.20 Nursing applicants by age and sex: Scotland
 Difference between cycle and 2018 cycle

Age group and sex		2010	2011	2012	2013	2014	2015	2016	2017	2018	2019
Under 18	Women	139%	67%	18%	12%	36%	18%	21%	27%	0%	27%
	Men										
18	Women	6%	6%	8%	3%	9%	13%	2%	3%	0%	14%
	Men	100%	59%	54%	92%	84%	68%	86%	8%	0%	81%
19	Women	15%	12%	12%	11%	15%	7%	11%	-4%	0%	17%
	Men	26%	35%	0%	70%	78%	0%	70%	0%	0%	13%
20-24	Women	6%	16%	3%	6%	21%	14%	3%	-4%	0%	-1%
	Men	23%	22%	7%	16%	27%	31%	14%	9%	0%	10%
25-29	Women	-17%	-13%	-17%	-17%	5%	6%	0%	-4%	0%	1%
	Men	3%	0%	-17%	-9%	-9%	-9%	-10%	-3%	0%	-7%
30-34	Women	-25%	-11%	-32%	-30%	-16%	-8%	-14%	-4%	0%	14%
	Men	25%	21%	-2%	-2%	25%	-8%	29%	15%	0%	6%
35 and over	Women	-8%	-19%	-34%	-37%	-21%	-22%	-16%	-17%	0%	13%
	Men	15%	-2%	-17%	-18%	-2%	1%	-11%	-10%	0%	8%
All ages	Women	-1%	1%	-7%	-8%	5%	4%	-2%	-4%	0%	9%
	Men	25%	15%	-1%	11%	20%	11%	15%	1%	0%	12%

Note: The percentage change is not recorded in the above table for groups with fewer than 10 applicants in that cycle or in the 2018 cycle.

DB.2.21 Nursing applicants by sex: Wales
Difference between cycle and 2018 cycle

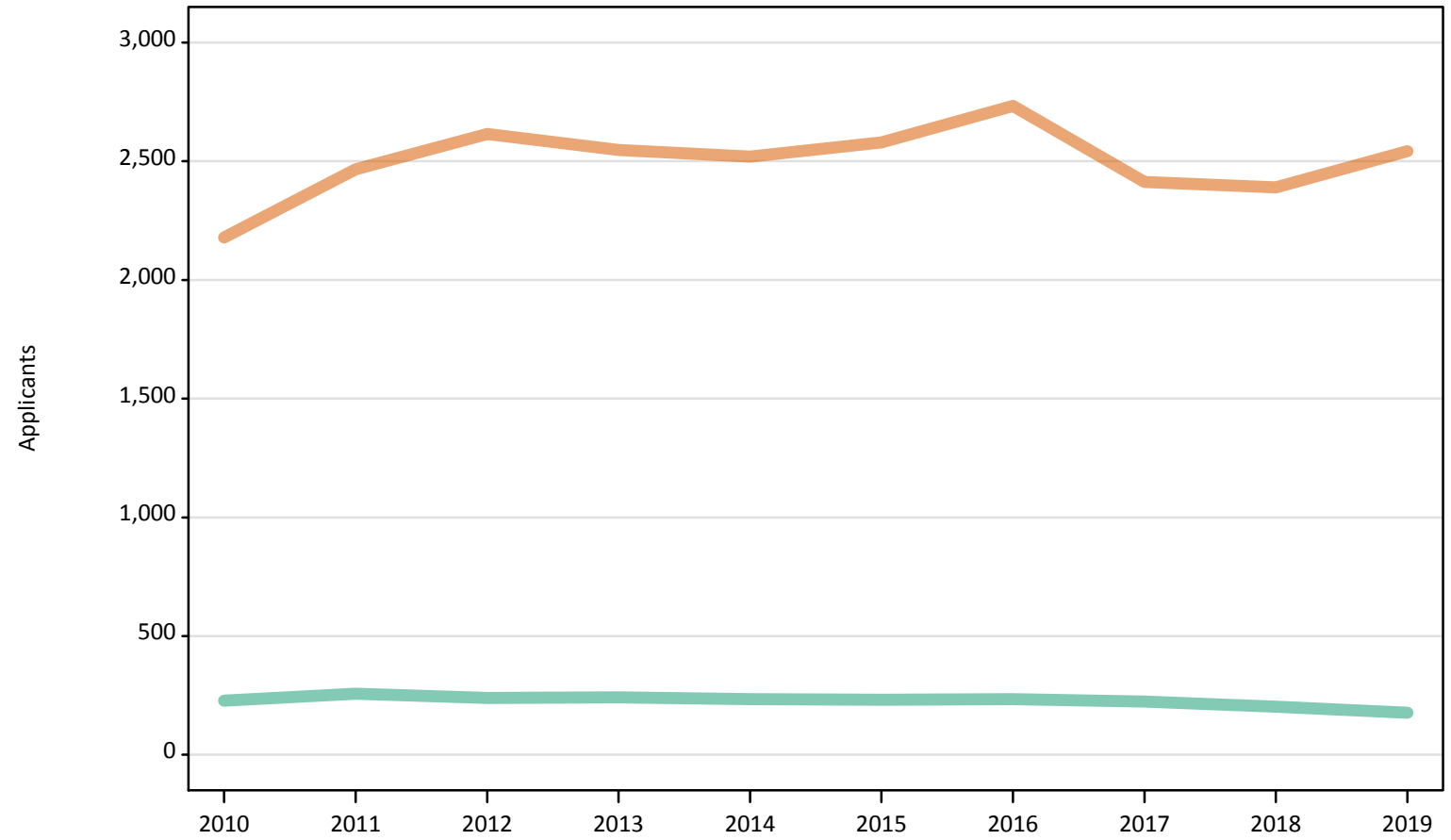
Men
Women



Note: The percentage change is not plotted in the above chart for groups with fewer than 500 applicants in any one cycle.

DB.2.22 Nursing applicants by sex: Wales

Men
Women



DB.2.23 Nursing applicants by age and sex: Wales

Age group and sex		2010	2011	2012	2013	2014	2015	2016	2017	2018	2019
Under 18	Women	0	0	0	0	0	0	0	0	0	0
	Men	0	0	0	0	0	0	0	0	0	0
18	Women	570	540	570	570	580	640	650	600	570	590
	Men	40	30	20	30	30	30	20	40	20	30
19	Women	250	320	300	280	280	300	320	300	300	360
	Men	20	20	20	20	20	20	20	20	20	20
20-24	Women	550	660	740	720	690	720	770	600	580	590
	Men	50	80	80	70	70	60	50	50	60	40
25-29	Women	330	410	430	430	450	440	430	410	380	400
	Men	40	50	50	60	50	50	50	50	40	30
30-34	Women	210	230	250	260	240	210	260	240	270	270
	Men	20	30	30	30	30	30	30	30	30	20
35 and over	Women	260	300	340	280	270	270	290	270	290	340
	Men	50	50	40	40	30	40	50	50	40	40
All ages	Women	2,180	2,470	2,610	2,550	2,520	2,580	2,730	2,410	2,390	2,540
	Men	230	260	240	240	240	230	240	220	200	180

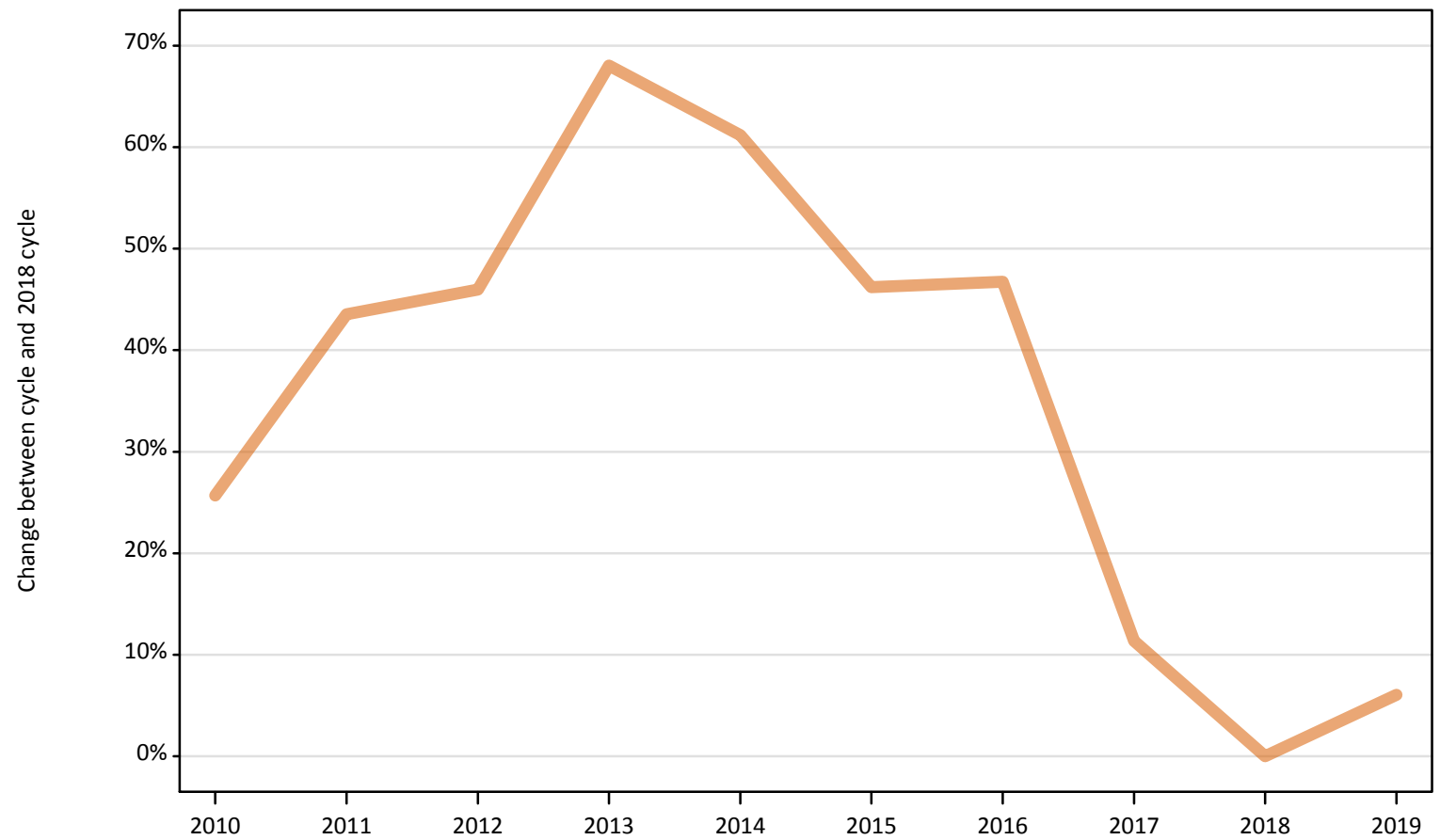
DB.2.24 Nursing applicants by age and sex: Wales
 Difference between cycle and 2018 cycle

Age group and sex		2010	2011	2012	2013	2014	2015	2016	2017	2018	2019
Under 18	Women										
	Men										
18	Women	0%	-5%	-1%	0%	2%	13%	14%	6%	0%	3%
	Men	68%	23%	5%	14%	36%	32%	9%	59%	0%	27%
19	Women	-17%	7%	-2%	-6%	-6%	0%	6%	-2%	0%	20%
	Men	-14%	10%	-24%	-19%	-5%	-29%	10%	-19%	0%	10%
20-24	Women	-4%	14%	28%	25%	20%	25%	34%	4%	0%	3%
	Men	-2%	40%	51%	35%	35%	11%	-5%	-4%	0%	-33%
25-29	Women	-13%	8%	13%	14%	18%	17%	14%	7%	0%	5%
	Men	23%	49%	51%	63%	40%	49%	49%	31%	0%	-11%
30-34	Women	-22%	-14%	-7%	-5%	-11%	-24%	-3%	-10%	0%	-1%
	Men	-23%	-17%	-3%	10%	3%	7%	3%	-10%	0%	-40%
35 and over	Women	-10%	2%	14%	-5%	-7%	-8%	0%	-10%	0%	14%
	Men	30%	33%	-10%	-10%	-23%	8%	33%	15%	0%	0%
All ages	Women	-9%	3%	9%	7%	5%	8%	14%	1%	0%	6%
	Men	12%	27%	18%	19%	16%	14%	16%	10%	0%	-13%

Note: The percentage change is not recorded in the above table for groups with fewer than 10 applicants in that cycle or in the 2018 cycle.

DB.2.25 Nursing applicants by sex: EU (excluding UK)
Difference between cycle and 2018 cycle

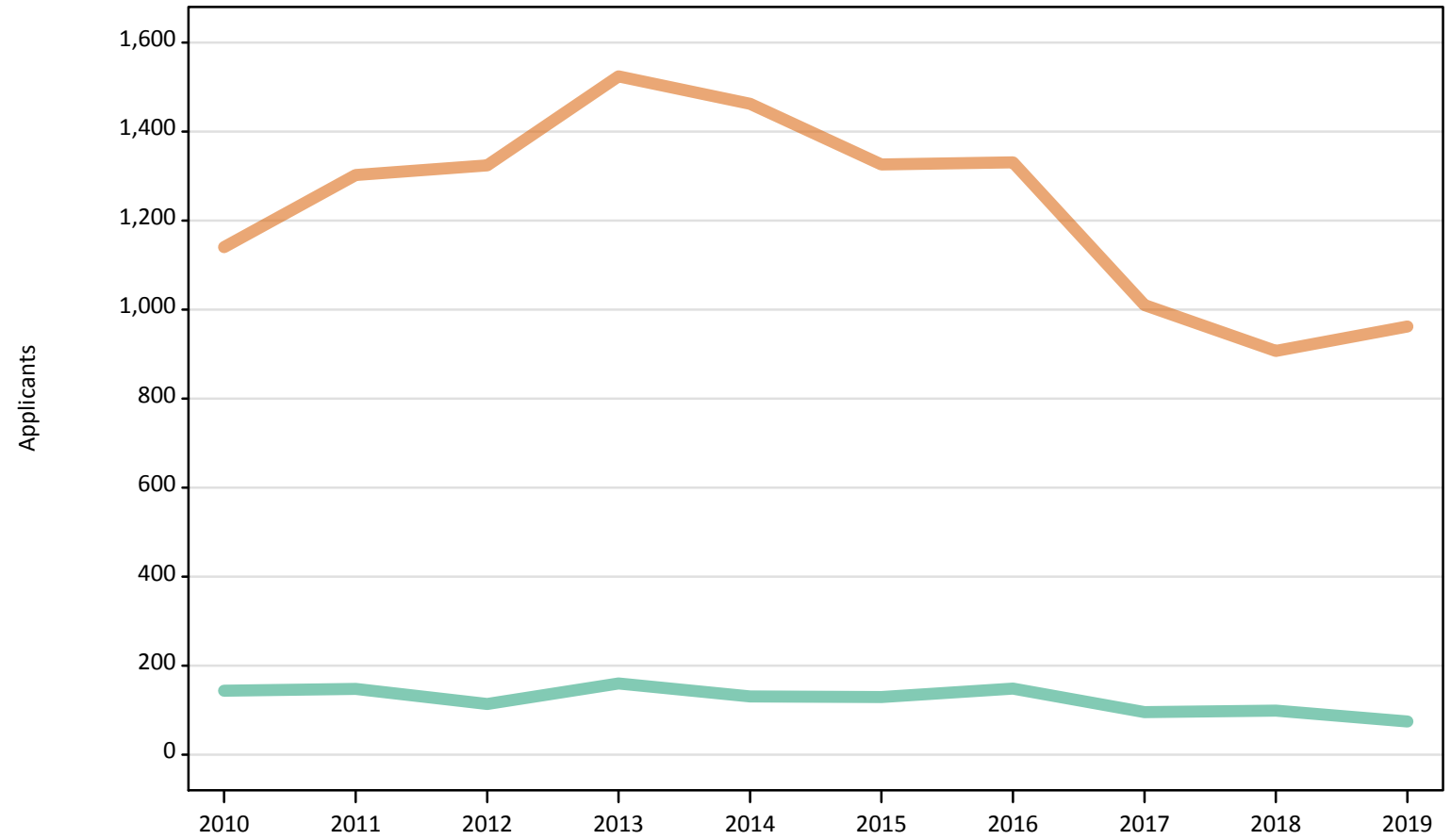
Men
Women



Note: The percentage change is not plotted in the above chart for groups with fewer than 500 applicants in any one cycle.

DB.2.26 Nursing applicants by sex: EU (excluding UK)

Men
Women



DB.2.27 Nursing applicants by age and sex: EU (excluding UK)

Age group and sex		2010	2011	2012	2013	2014	2015	2016	2017	2018	2019
Under 18	Women	70	70	70	70	70	60	60	50	50	70
	Men	0	10	0	10	0	10	0	0	0	0
18	Women	310	320	330	390	340	300	340	230	220	220
	Men	20	10	20	30	20	20	30	20	20	10
19	Women	300	300	320	370	360	340	350	270	240	280
	Men	20	20	20	30	30	20	30	20	20	20
20-24	Women	310	390	390	470	450	430	400	340	290	300
	Men	50	50	40	50	50	40	50	30	30	30
25-29	Women	90	140	120	150	140	140	110	60	60	40
	Men	30	20	10	20	20	10	10	10	10	10
30-34	Women	40	40	40	40	40	30	30	30	20	20
	Men	20	20	10	10	10	10	10	0	10	0
35 and over	Women	20	30	50	40	50	40	50	30	30	40
	Men	10	20	10	20	10	20	20	20	10	10
All ages	Women	1,140	1,300	1,320	1,520	1,460	1,330	1,330	1,010	910	960
	Men	140	150	110	160	130	130	150	100	100	80

DB.2.28 Nursing applicants by age and sex: EU (excluding UK)

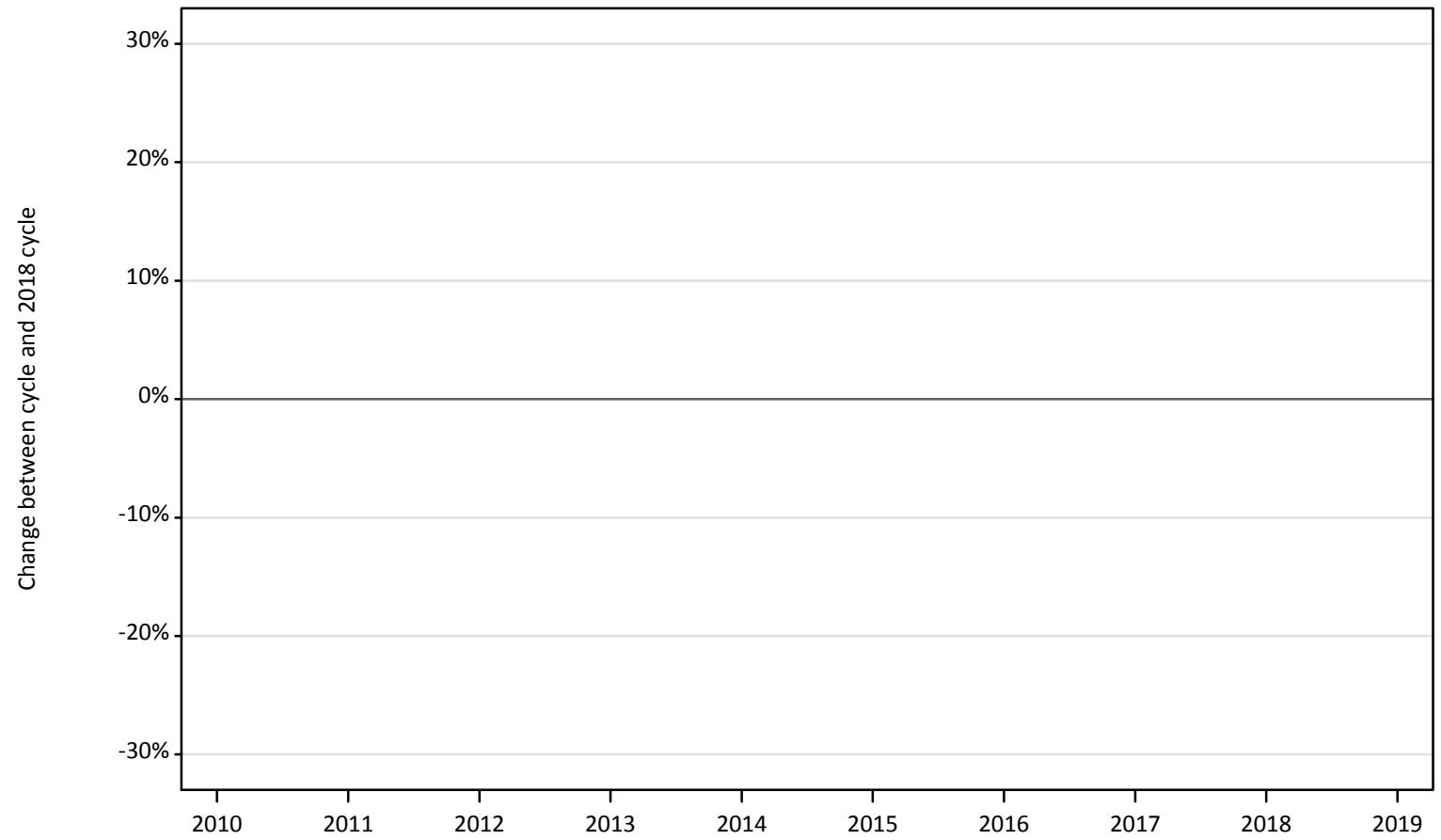
Difference between cycle and 2018 cycle

Age group and sex		2010	2011	2012	2013	2014	2015	2016	2017	2018	2019
Under 18	Women	57%	55%	40%	49%	51%	19%	23%	6%	0%	45%
	Men										
18	Women	41%	47%	52%	79%	54%	35%	54%	5%	0%	2%
	Men	19%	-13%	38%	56%	31%	25%	69%	19%	0%	-19%
19	Women	24%	24%	32%	50%	50%	39%	46%	12%	0%	16%
	Men	-4%	-8%	-38%	4%	4%	0%	4%	-17%	0%	-38%
20-24	Women	4%	31%	33%	60%	54%	45%	36%	14%	0%	3%
	Men	77%	88%	50%	100%	81%	42%	85%	8%	0%	-4%
25-29	Women	58%	151%	114%	156%	144%	137%	93%	9%	0%	-39%
	Men	150%	100%	30%	90%	90%	40%	40%	-10%	0%	0%
30-34	Women	68%	100%	77%	95%	100%	50%	18%	18%	0%	-23%
	Men	78%	89%	22%	33%	-33%	-22%	-11%		0%	
35 and over	Women	-4%	28%	112%	60%	116%	68%	84%	36%	0%	40%
	Men	0%	29%	-7%	57%	-21%	43%	71%	14%	0%	-50%
All ages	Women	26%	44%	46%	68%	61%	46%	47%	11%	0%	6%
	Men	45%	49%	15%	62%	32%	31%	51%	-3%	0%	-24%

Note: The percentage change is not recorded in the above table for groups with fewer than 10 applicants in that cycle or in the 2018 cycle.

DB.2.29 Nursing applicants by sex: Not EU
Difference between cycle and 2018 cycle

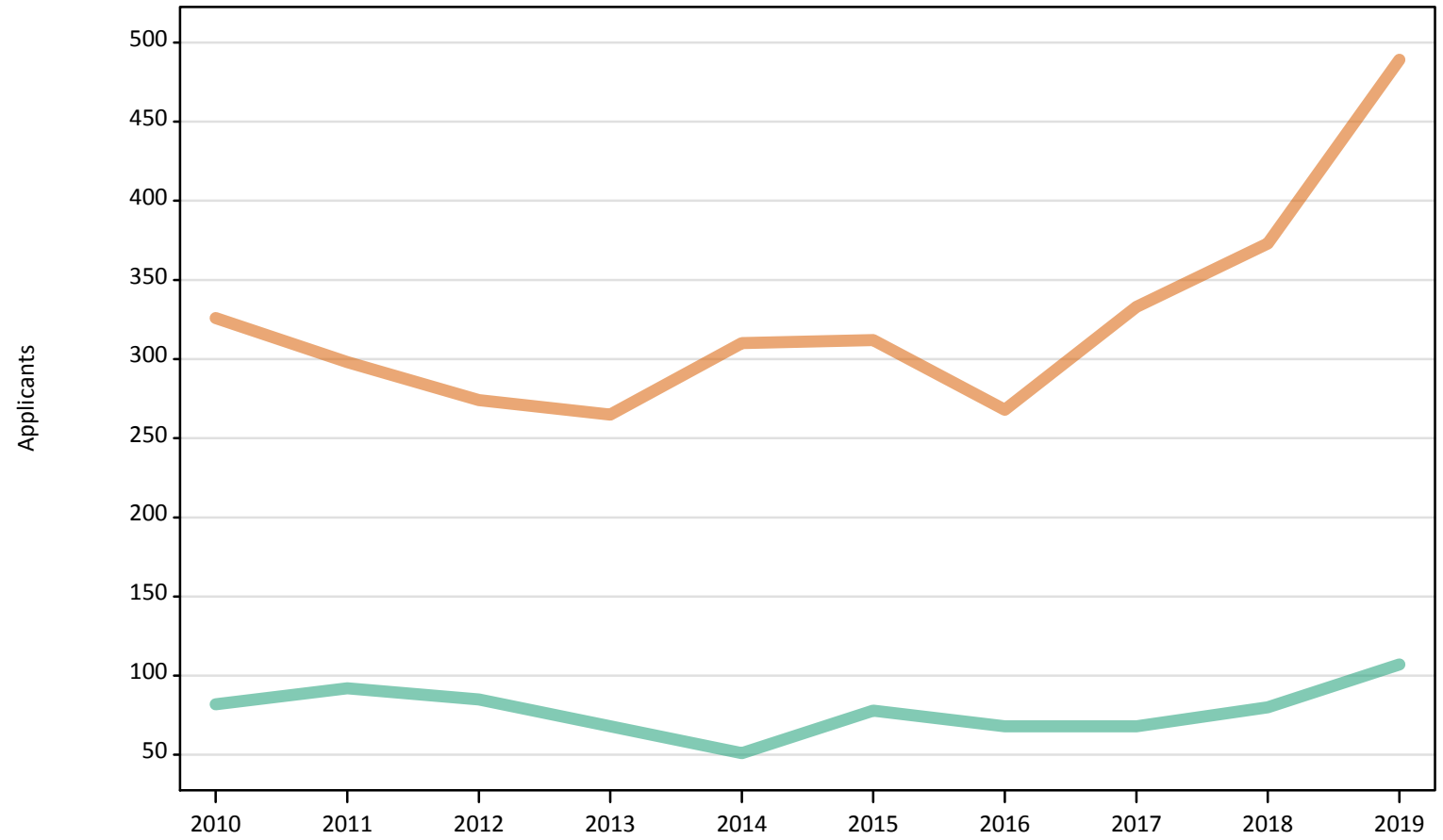
Men
Women



Note: The percentage change is not plotted in the above chart for groups with fewer than 500 applicants in any one cycle.

DB.2.30 Nursing applicants by sex: Not EU

Men
Women



DB.2.31 Nursing applicants by age and sex: Not EU

Age group and sex		2010	2011	2012	2013	2014	2015	2016	2017	2018	2019
Under 18	Women	10	10	10	10	10	10	10	10	10	10
	Men	0	0	0	0	0	0	0	0	0	0
18	Women	30	30	60	50	50	70	50	70	80	90
	Men	0	0	10	10	10	10	10	10	10	10
19	Women	40	30	30	30	40	40	30	40	50	70
	Men	0	10	10	0	0	10	10	10	10	10
20-24	Women	110	90	70	80	110	80	80	100	100	120
	Men	30	30	30	20	10	30	20	20	10	20
25-29	Women	60	70	40	60	40	70	40	50	50	80
	Men	20	20	20	20	10	10	10	10	20	20
30-34	Women	50	30	30	20	30	20	20	40	50	50
	Men	10	20	10	10	10	10	10	10	20	20
35 and over	Women	40	40	30	20	30	30	40	40	30	70
	Men	10	10	10	10	10	10	20	10	20	20
All ages	Women	330	300	270	270	310	310	270	330	370	490
	Men	80	90	90	70	50	80	70	70	80	110

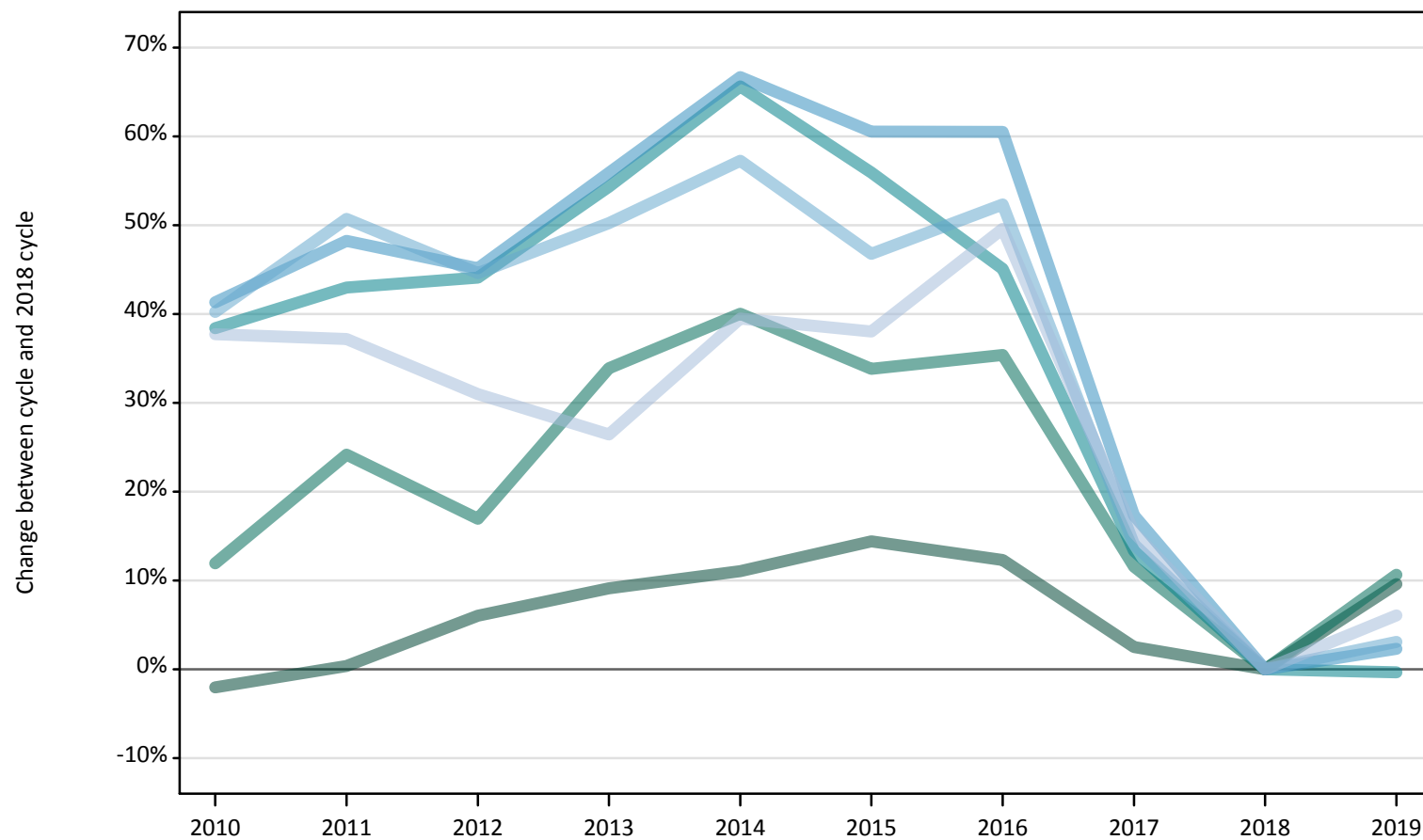
DB.2.32 Nursing applicants by age and sex: Not EU
 Difference between cycle and 2018 cycle

Age group and sex		2010	2011	2012	2013	2014	2015	2016	2017	2018	2019
Under 18	Women	-44%	-22%	-22%	-22%	0%	-11%	-33%	0%	0%	44%
	Men										
18	Women	-63%	-59%	-21%	-33%	-36%	-20%	-37%	-17%	0%	15%
	Men			-38%	-62%	-54%	-23%	-38%	-23%	0%	-46%
19	Women	-28%	-40%	-38%	-38%	-21%	-32%	-45%	-17%	0%	25%
	Men		0%	40%			60%	100%	20%	0%	100%
20-24	Women	13%	-12%	-25%	-20%	10%	-15%	-15%	-3%	0%	18%
	Men	117%	133%	117%	75%	17%	108%	25%	58%	0%	92%
25-29	Women	12%	31%	-22%	8%	-18%	29%	-22%	-10%	0%	59%
	Men	50%	38%	13%	44%	-31%	-31%	-44%	-31%	0%	50%
30-34	Women	-4%	-39%	-45%	-59%	-51%	-59%	-57%	-31%	0%	6%
	Men	-24%	29%	-24%	-53%	-53%	-29%	-53%	-29%	0%	6%
35 and over	Women	21%	41%	-3%	-45%	7%	10%	24%	24%	0%	124%
	Men	-18%	-29%	-41%	-53%	-59%	-35%	-6%	-53%	0%	24%
All ages	Women	-13%	-20%	-27%	-29%	-17%	-16%	-28%	-11%	0%	31%
	Men	3%	15%	6%	-15%	-36%	-3%	-15%	-15%	0%	34%

Note: The percentage change is not recorded in the above table for groups with fewer than 10 applicants in that cycle or in the 2018 cycle.

DB.2.33 Nursing applicants by age: All domiciles
Difference between cycle and 2018 cycle

- 18
- 19
- 20-24
- 25-29
- 30-34
- 35 and over



Note: The percentage change is not plotted in the above chart for groups with fewer than 500 applicants in any one cycle.

DB.2.34 Nursing applicants by age: All domiciles

Domicile and age group		2010	2011	2012	2013	2014	2015	2016	2017	2018	2019
All domiciles	Under 18	350	230	140	140	150	140	130	130	100	150
	18	10,880	11,150	11,780	12,120	12,340	12,710	12,480	11,390	11,110	12,170
	19	5,740	6,370	6,000	6,870	7,180	6,860	6,940	5,720	5,130	5,670
	20-24	13,150	13,580	13,690	14,660	15,730	14,810	13,780	10,770	9,500	9,470
	25-29	7,370	7,730	7,570	8,130	8,690	8,370	8,370	6,120	5,210	5,340
	30-34	4,950	5,320	5,100	5,300	5,550	5,180	5,370	4,020	3,530	3,640
	35 and over	8,300	8,260	7,890	7,620	8,400	8,320	9,010	6,950	6,020	6,390
	All ages	50,730	52,640	52,160	54,840	58,040	56,380	56,080	45,090	40,600	42,820

DB.2.35 Nursing applicants by age: All domiciles

Difference between cycle and 2018 cycle

Domicile and age group		2010	2011	2012	2013	2014	2015	2016	2017	2018	2019
All domiciles	Under 18	232%	125%	34%	38%	46%	30%	23%	20%	0%	39%
	18	-2%	0%	6%	9%	11%	14%	12%	3%	0%	10%
	19	12%	24%	17%	34%	40%	34%	35%	12%	0%	11%
	20-24	38%	43%	44%	54%	66%	56%	45%	13%	0%	-0%
	25-29	41%	48%	45%	56%	67%	61%	60%	17%	0%	2%
	30-34	40%	51%	45%	50%	57%	47%	52%	14%	0%	3%
	35 and over	38%	37%	31%	26%	39%	38%	50%	15%	0%	6%
	All ages	25%	30%	28%	35%	43%	39%	38%	11%	0%	5%

Note: The percentage change is not recorded in the above table for groups with fewer than 10 applicants in that cycle or in the 2018 cycle.

DB.2.36 Nursing applicants by age: UK
Difference between cycle and 2018 cycle

- 18
- 19
- 20-24
- 25-29
- 30-34
- 35 and over



Note: The percentage change is not plotted in the above chart for groups with fewer than 500 applicants in any one cycle.

DB.2.37 Nursing applicants by age: UK

Domicile and age group		2010	2011	2012	2013	2014	2015	2016	2017	2018	2019
UK	Under 18	270	150	60	60	70	60	60	60	50	60
	18	10,530	10,780	11,350	11,650	11,920	12,320	12,050	11,060	10,780	11,840
	19	5,380	6,010	5,620	6,440	6,750	6,460	6,520	5,380	4,800	5,300
	20-24	12,660	13,030	13,160	14,040	15,110	14,240	13,240	10,290	9,070	9,000
	25-29	7,170	7,480	7,380	7,890	8,480	8,140	8,200	5,990	5,080	5,190
	30-34	4,830	5,200	5,010	5,220	5,460	5,100	5,310	3,950	3,430	3,550
	35 and over	8,210	8,160	7,790	7,530	8,300	8,210	8,890	6,860	5,940	6,260
	All ages	49,030	50,800	50,360	52,820	56,090	54,540	54,270	43,590	39,140	41,190

DB.2.38 Nursing applicants by age: UK

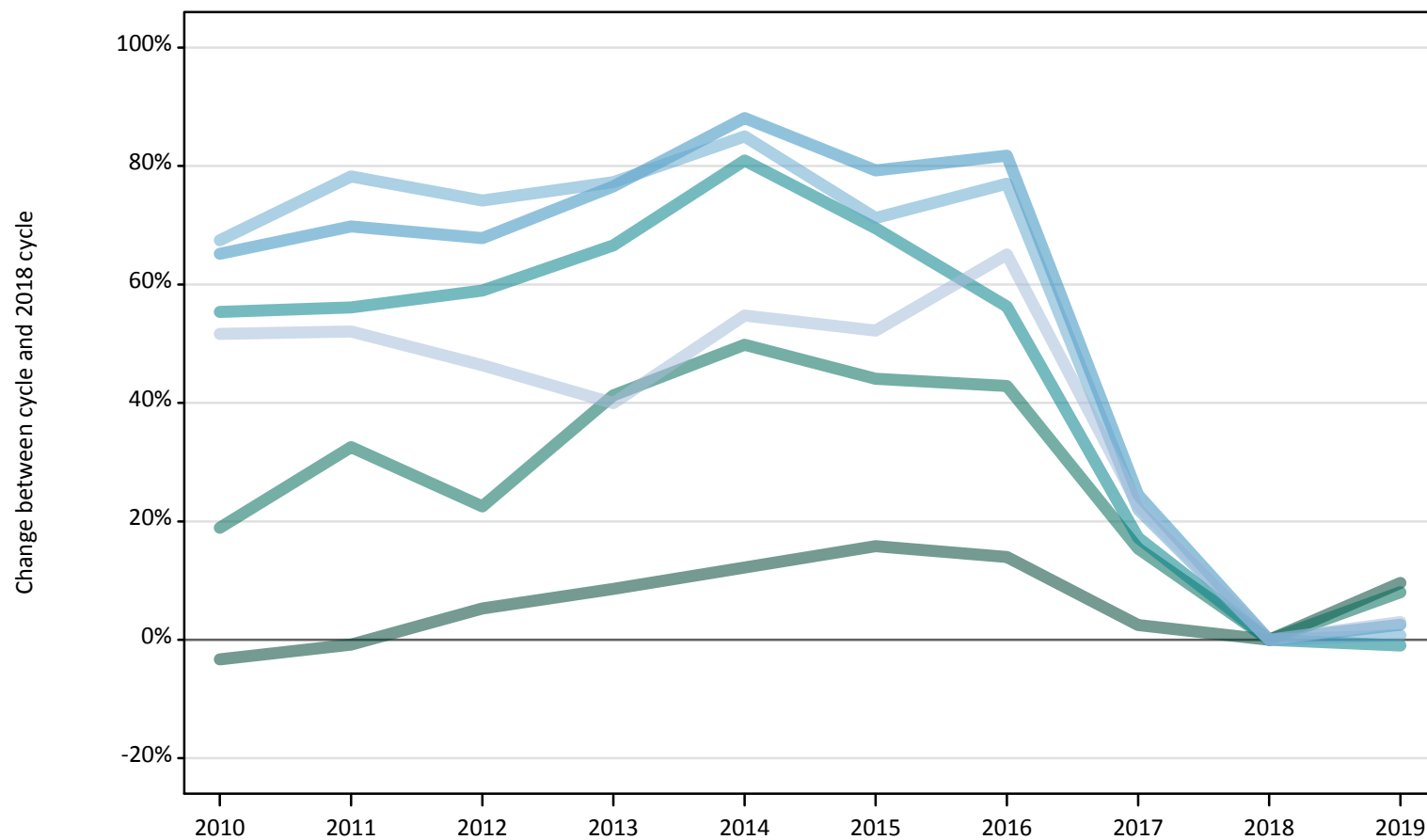
Difference between cycle and 2018 cycle

Domicile and age group		2010	2011	2012	2013	2014	2015	2016	2017	2018	2019
UK	Under 18	452%	204%	29%	29%	42%	29%	23%	27%	0%	19%
	18	-2%	-0%	5%	8%	11%	14%	12%	3%	0%	10%
	19	12%	25%	17%	34%	40%	34%	36%	12%	0%	10%
	20-24	40%	44%	45%	55%	67%	57%	46%	13%	0%	-1%
	25-29	41%	47%	45%	55%	67%	60%	61%	18%	0%	2%
	30-34	41%	52%	46%	52%	59%	49%	55%	15%	0%	3%
	35 and over	38%	37%	31%	27%	40%	38%	50%	15%	0%	5%
	All ages	25%	30%	29%	35%	43%	39%	39%	11%	0%	5%

Note: The percentage change is not recorded in the above table for groups with fewer than 10 applicants in that cycle or in the 2018 cycle.

DB.2.39 Nursing applicants by age: England
Difference between cycle and 2018 cycle

- 18
- 19
- 20-24
- 25-29
- 30-34
- 35 and over



Note: The percentage change is not plotted in the above chart for groups with fewer than 500 applicants in any one cycle.

DB.2.40 Nursing applicants by age: England

Domicile and age group		2010	2011	2012	2013	2014	2015	2016	2017	2018	2019
England	Under 18	180	90	20	20	20	20	10	20	10	10
	18	7,920	8,130	8,630	8,890	9,190	9,490	9,340	8,400	8,190	8,980
	19	4,360	4,860	4,500	5,190	5,500	5,290	5,240	4,240	3,670	3,960
	20-24	10,510	10,560	10,760	11,270	12,240	11,470	10,570	7,930	6,770	6,700
	25-29	5,990	6,160	6,090	6,400	6,820	6,500	6,590	4,510	3,630	3,720
	30-34	4,130	4,390	4,290	4,370	4,560	4,220	4,360	3,010	2,460	2,480
	35 and over	7,060	7,070	6,810	6,510	7,200	7,080	7,680	5,710	4,650	4,790
	All ages	40,150	41,270	41,080	42,650	45,530	44,060	43,800	33,810	29,390	30,650

DB.2.41 Nursing applicants by age: England

Difference between cycle and 2018 cycle

Domicile and age group		2010	2011	2012	2013	2014	2015	2016	2017	2018	2019
England	Under 18	1246%	585%	23%	46%	54%	31%	-15%	15%	0%	-23%
	18	-3%	-1%	5%	9%	12%	16%	14%	3%	0%	10%
	19	19%	33%	23%	41%	50%	44%	43%	15%	0%	8%
	20-24	55%	56%	59%	67%	81%	69%	56%	17%	0%	-1%
	25-29	65%	70%	68%	77%	88%	79%	82%	24%	0%	3%
	30-34	67%	78%	74%	77%	85%	71%	77%	22%	0%	1%
	35 and over	52%	52%	46%	40%	55%	52%	65%	23%	0%	3%
	All ages	37%	40%	40%	45%	55%	50%	49%	15%	0%	4%

Note: The percentage change is not recorded in the above table for groups with fewer than 10 applicants in that cycle or in the 2018 cycle.

DB.2.42 Nursing applicants by age: Northern Ireland
Difference between cycle and 2018 cycle

- 18
- 19
- 20-24
- 25-29
- 30-34
- 35 and over



Note: The percentage change is not plotted in the above chart for groups with fewer than 500 applicants in any one cycle.

DB.2.43 Nursing applicants by age: Northern Ireland

Domicile and age group		2010	2011	2012	2013	2014	2015	2016	2017	2018	2019
Northern Ireland	Under 18	0	0	0	0	0	0	0	0	0	0
	18	790	890	930	990	890	900	880	890	890	960
	19	210	270	290	430	400	360	410	390	350	410
	20-24	350	430	430	780	740	710	680	620	550	550
	25-29	140	160	150	330	350	320	340	270	250	250
	30-34	60	70	70	180	180	170	190	170	140	190
	35 and over	90	80	70	180	150	180	190	180	160	210
	All ages	1,630	1,910	1,940	2,890	2,710	2,640	2,700	2,510	2,350	2,570

DB.2.44 Nursing applicants by age: Northern Ireland

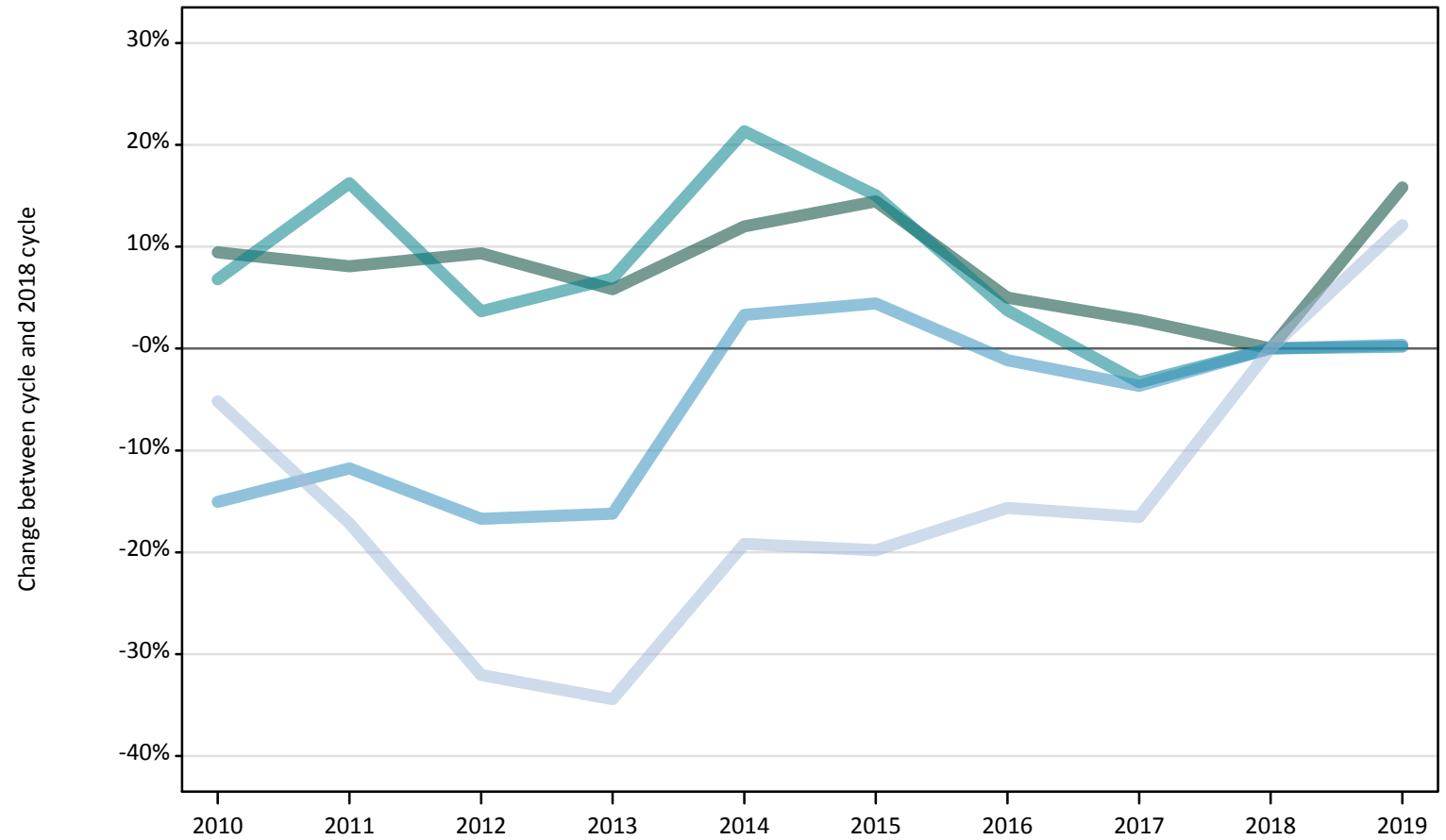
Difference between cycle and 2018 cycle

Domicile and age group		2010	2011	2012	2013	2014	2015	2016	2017	2018	2019
Northern Ireland	Under 18										
	18	-12%	-0%	4%	11%	-1%	1%	-1%	-0%	0%	8%
	19	-41%	-21%	-15%	23%	15%	3%	19%	11%	0%	19%
	20-24	-37%	-22%	-23%	41%	35%	27%	23%	13%	0%	-0%
	25-29	-44%	-36%	-40%	32%	39%	29%	36%	6%	0%	-2%
	30-34	-60%	-48%	-51%	26%	24%	19%	30%	15%	0%	29%
	35 and over	-47%	-51%	-58%	14%	-4%	13%	22%	11%	0%	29%
	All ages	-31%	-19%	-17%	23%	15%	13%	15%	7%	0%	9%

Note: The percentage change is not recorded in the above table for groups with fewer than 10 applicants in that cycle or in the 2018 cycle.

DB.2.45 Nursing applicants by age: Scotland
Difference between cycle and 2018 cycle

- 18
- 19
- 20-24
- 25-29
- 30-34
- 35 and over



Note: The percentage change is not plotted in the above chart for groups with fewer than 500 applicants in any one cycle.

DB.2.46 Nursing applicants by age: Scotland

Domicile and age group		2010	2011	2012	2013	2014	2015	2016	2017	2018	2019
Scotland	Under 18	80	60	40	40	50	40	40	40	30	40
	18	1,210	1,190	1,200	1,170	1,230	1,260	1,160	1,130	1,100	1,280
	19	540	530	520	530	550	500	530	450	470	540
	20-24	1,190	1,300	1,160	1,190	1,350	1,280	1,160	1,080	1,120	1,120
	25-29	670	700	660	660	820	830	780	760	790	790
	30-34	410	480	370	380	460	480	470	510	520	590
	35 and over	750	660	540	520	640	640	670	660	790	890
	All ages	4,860	4,900	4,490	4,490	5,100	5,020	4,800	4,630	4,820	5,250

DB.2.47 Nursing applicants by age: Scotland

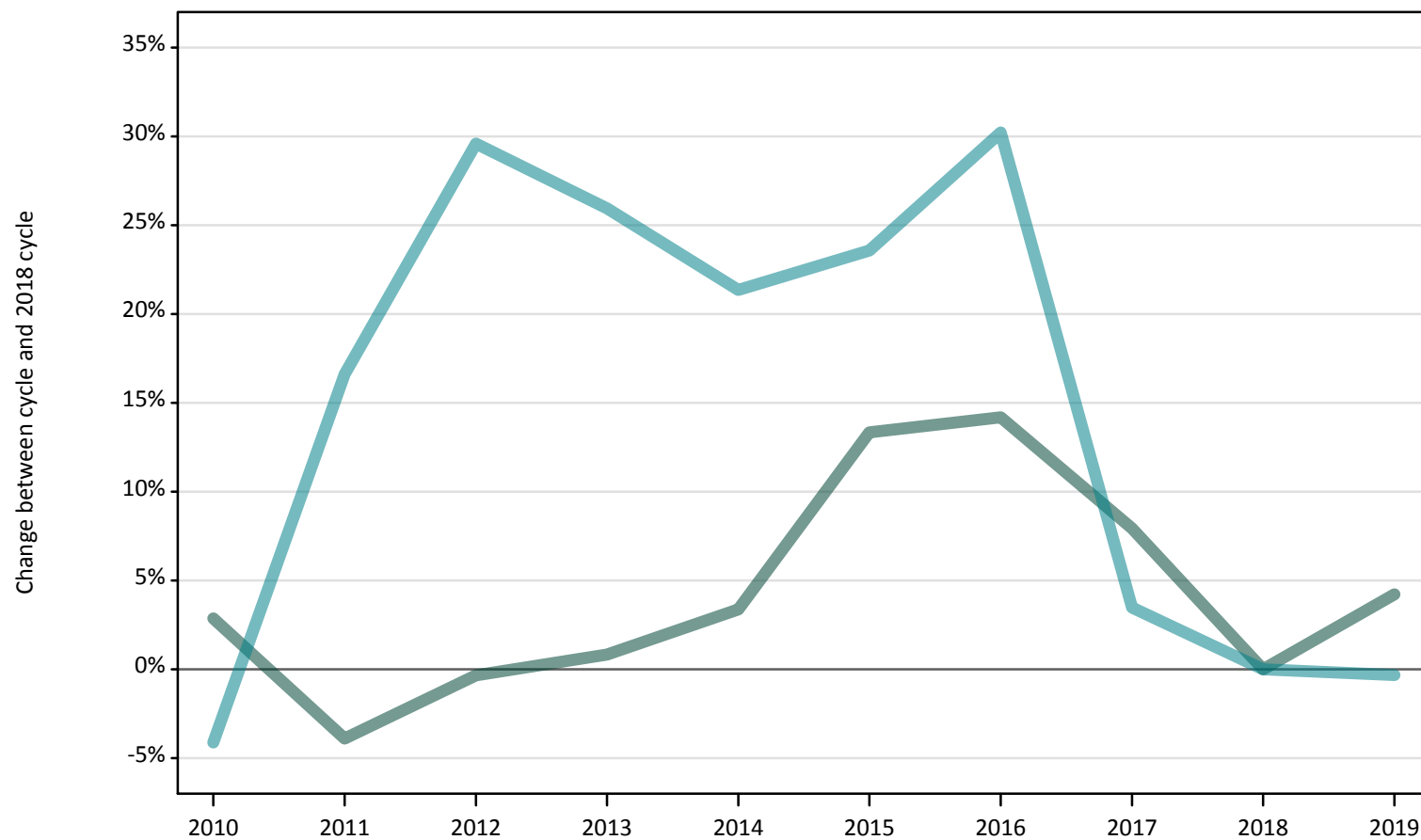
Difference between cycle and 2018 cycle

Domicile and age group		2010	2011	2012	2013	2014	2015	2016	2017	2018	2019
Scotland	Under 18	141%	62%	24%	18%	35%	21%	21%	26%	0%	26%
	18	9%	8%	9%	6%	12%	14%	5%	3%	0%	16%
	19	16%	13%	12%	14%	18%	7%	14%	-4%	0%	17%
	20-24	7%	16%	4%	7%	21%	15%	4%	-3%	0%	0%
	25-29	-15%	-12%	-17%	-16%	3%	4%	-1%	-4%	0%	0%
	30-34	-20%	-8%	-30%	-28%	-12%	-8%	-10%	-2%	0%	14%
	35 and over	-5%	-17%	-32%	-34%	-19%	-20%	-16%	-17%	0%	12%
	All ages	1%	2%	-7%	-7%	6%	4%	-0%	-4%	0%	9%

Note: The percentage change is not recorded in the above table for groups with fewer than 10 applicants in that cycle or in the 2018 cycle.

DB.2.48 Nursing applicants by age: Wales
Difference between cycle and 2018 cycle

- 18
- 19
- 20-24
- 25-29
- 30-34
- 35 and over



Note: The percentage change is not plotted in the above chart for groups with fewer than 500 applicants in any one cycle.

DB.2.49 Nursing applicants by age: Wales

Domicile and age group		2010	2011	2012	2013	2014	2015	2016	2017	2018	2019
Wales	Under 18	0	0	0	0	0	0	0	0	0	0
	18	610	570	590	600	610	670	680	640	590	620
	19	270	340	310	300	300	320	340	310	320	380
	20-24	610	740	820	800	770	780	820	650	630	630
	25-29	370	460	480	490	500	490	480	450	410	430
	30-34	230	260	280	290	270	240	290	270	300	290
	35 and over	320	350	370	320	310	310	350	310	330	380
	All ages	2,410	2,720	2,850	2,790	2,750	2,810	2,970	2,640	2,590	2,720

DB.2.50 Nursing applicants by age: Wales

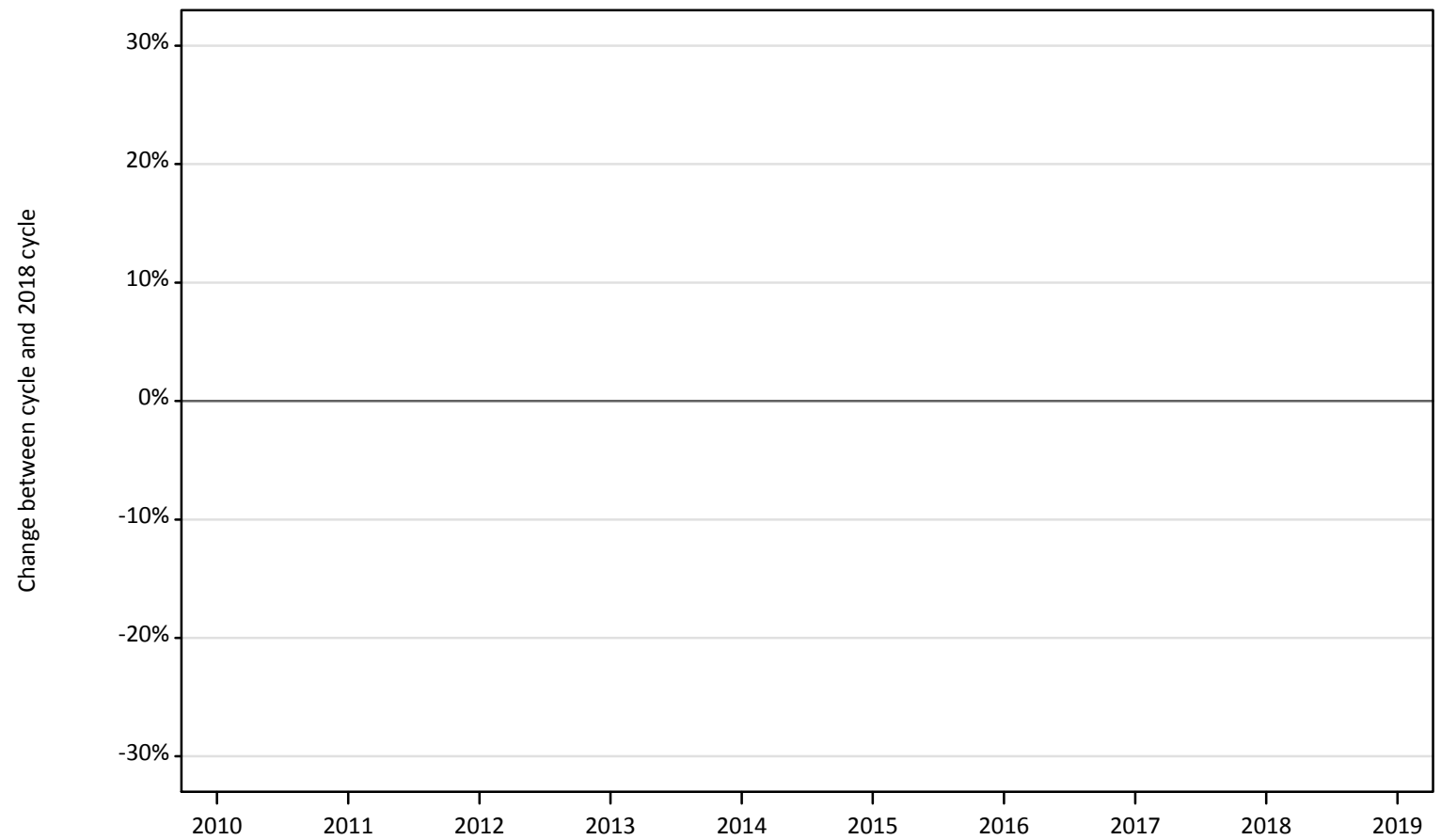
Difference between cycle and 2018 cycle

Domicile and age group		2010	2011	2012	2013	2014	2015	2016	2017	2018	2019
Wales	Under 18										
	18	3%	-4%	-0%	1%	3%	13%	14%	8%	0%	4%
	19	-17%	7%	-3%	-7%	-6%	-2%	7%	-3%	0%	19%
	20-24	-4%	17%	30%	26%	21%	24%	30%	3%	0%	-0%
	25-29	-10%	12%	16%	18%	20%	20%	17%	9%	0%	3%
	30-34	-22%	-14%	-6%	-3%	-10%	-21%	-2%	-10%	0%	-5%
	35 and over	-5%	5%	11%	-5%	-9%	-6%	4%	-7%	0%	12%
	All ages	-7%	5%	10%	8%	6%	8%	14%	2%	0%	5%

Note: The percentage change is not recorded in the above table for groups with fewer than 10 applicants in that cycle or in the 2018 cycle.

DB.2.51 Nursing applicants by age: EU (excluding UK)
Difference between cycle and 2018 cycle

- 18
- 19
- 20-24
- 25-29
- 30-34
- 35 and over



Note: The percentage change is not plotted in the above chart for groups with fewer than 500 applicants in any one cycle.

DB.2.52 Nursing applicants by age: EU (excluding UK)

Domicile and age group		2010	2011	2012	2013	2014	2015	2016	2017	2018	2019
EU (excluding UK)	Under 18	80	80	70	80	70	60	60	50	50	70
	18	330	340	360	420	360	320	370	250	240	240
	19	320	320	340	390	390	360	380	290	270	300
	20-24	350	440	430	520	500	460	450	360	320	330
	25-29	120	160	140	170	160	150	120	70	70	50
	30-34	50	60	50	60	50	40	30	30	30	20
	35 and over	40	50	70	60	70	60	70	50	40	40
	All ages	1,280	1,450	1,440	1,680	1,590	1,460	1,480	1,110	1,010	1,040

DB.2.53 Nursing applicants by age: EU (excluding UK)

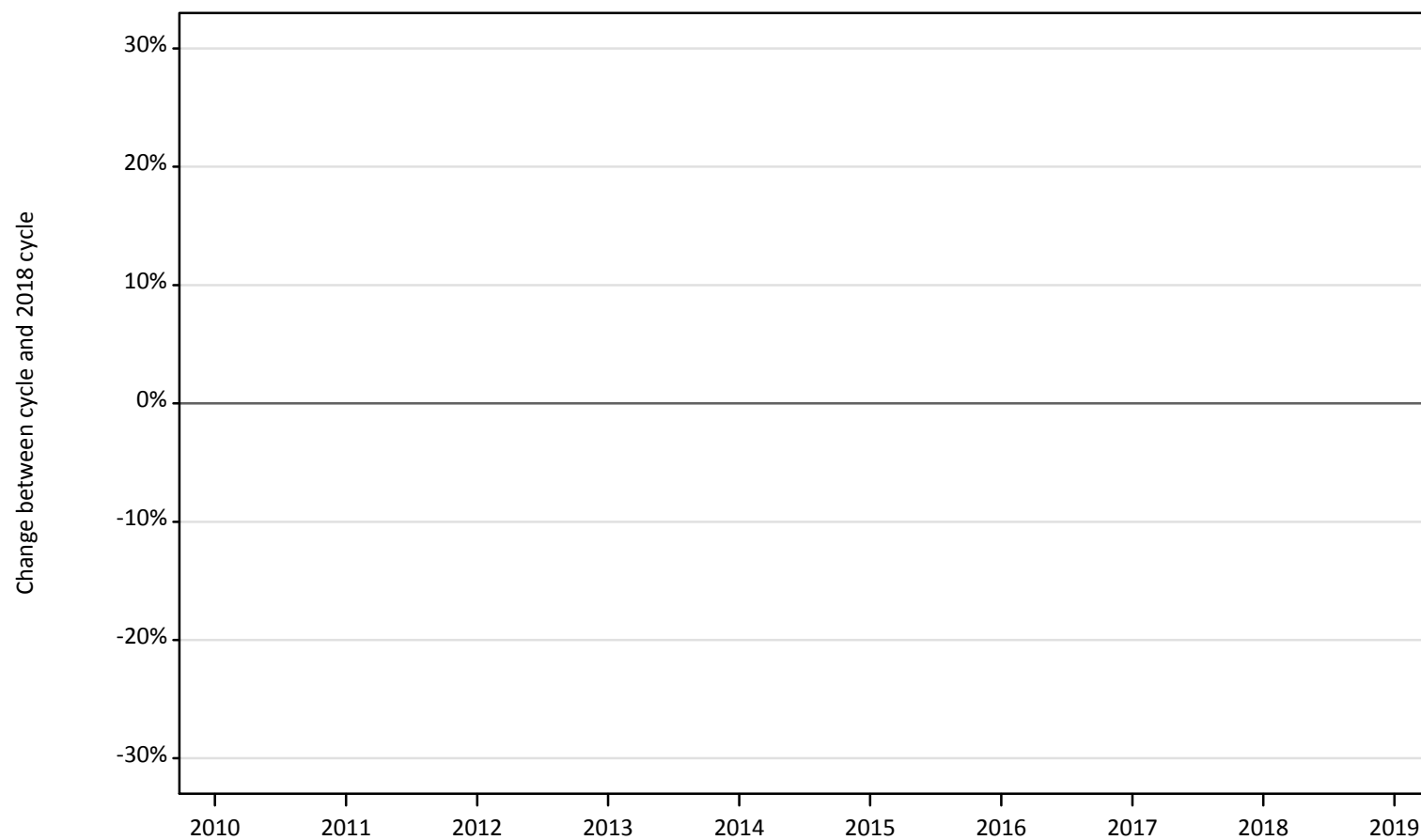
Difference between cycle and 2018 cycle

Domicile and age group		2010	2011	2012	2013	2014	2015	2016	2017	2018	2019
EU (excluding UK)	Under 18	60%	72%	43%	60%	55%	36%	30%	13%	0%	51%
	18	39%	43%	51%	77%	53%	34%	55%	6%	0%	0%
	19	21%	21%	26%	46%	46%	36%	42%	9%	0%	11%
	20-24	10%	36%	34%	63%	56%	45%	40%	13%	0%	2%
	25-29	72%	143%	101%	146%	136%	122%	85%	6%	0%	-33%
	30-34	71%	97%	61%	77%	61%	29%	10%	-13%	0%	-39%
	35 and over	-3%	28%	69%	59%	67%	59%	79%	28%	0%	8%
	All ages	28%	44%	43%	67%	58%	45%	47%	10%	0%	3%

Note: The percentage change is not recorded in the above table for groups with fewer than 10 applicants in that cycle or in the 2018 cycle.

DB.2.54 Nursing applicants by age: Not EU
Difference between cycle and 2018 cycle

- 18
- 19
- 20-24
- 25-29
- 30-34
- 35 and over



Note: The percentage change is not plotted in the above chart for groups with fewer than 500 applicants in any one cycle.

DB.2.55 Nursing applicants by age: Not EU

Domicile and age group		2010	2011	2012	2013	2014	2015	2016	2017	2018	2019
Not EU	Under 18	10	10	10	10	10	10	10	10	10	20
	18	30	40	70	60	60	80	60	80	90	100
	19	40	40	40	40	50	40	40	50	60	80
	20-24	140	120	100	100	120	110	100	120	110	140
	25-29	80	90	60	80	50	80	50	60	70	110
	30-34	60	50	40	30	30	30	30	50	70	70
	35 and over	50	50	40	20	40	40	50	40	50	90
	All ages	410	390	360	330	360	390	340	400	450	600

DB.2.56 Nursing applicants by age: Not EU

Difference between cycle and 2018 cycle

Domicile and age group		2010	2011	2012	2013	2014	2015	2016	2017	2018	2019
Not EU	Under 18	-44%	-22%	11%	-22%	22%	0%	-11%	22%	0%	89%
	18	-67%	-62%	-23%	-37%	-38%	-20%	-37%	-18%	0%	6%
	19	-28%	-36%	-31%	-38%	-22%	-24%	-33%	-14%	0%	31%
	20-24	24%	4%	-10%	-10%	11%	-2%	-11%	4%	0%	26%
	25-29	21%	33%	-13%	16%	-21%	15%	-27%	-15%	0%	57%
	30-34	-9%	-22%	-40%	-57%	-51%	-51%	-56%	-31%	0%	6%
	35 and over	7%	15%	-17%	-48%	-17%	-7%	13%	-4%	0%	87%
	All ages	-10%	-14%	-21%	-26%	-20%	-14%	-26%	-11%	0%	32%

Note: The percentage change is not recorded in the above table for groups with fewer than 10 applicants in that cycle or in the 2018 cycle.

DB.2.57 Technical notes and definitions

Applicants have been able to submit applications for all 2019 courses since early September.

Applicants who submit their applications to UCAS by the January deadline are considered as 'on time' applicants for the large majority of courses offered through UCAS.

This statistical release covers all Main Scheme applicants who submit their applications to UCAS by the January deadline, including those who have applied for courses with a 15 October deadline. Counts of RPAs (records of prior acceptance) are not included.

Subject group 'B7' covers courses related to nursing. These additional tables include applicants who made at least one choice to a 'B7' course by the January deadline. The primary deadline applicant statistics, which include applicants to all courses, are available on the UCAS website.

Counts of the number of applicants reported have been rounded to the nearest 10 applicants, this may result in instances where totals do not equal the sum of the components. Proportional changes have been rounded to the nearest whole percentage point.

In 2009, the Canary Islands classification changed from Not EU to EU (excluding UK). In order to present an accurate time series, the Canary Islands have been consistently classified as EU (excluding UK). This will result in differences with data published prior to 2010.

Age

This statistical release uses country-specific age definitions which align with the cut off points for school/college cohorts within the different administrations of the UK. For England and Wales ages are defined on the 31 August, for Northern Ireland on the 1 July and for Scotland on the 28 February the following year. Defining ages in this way matches the assignment of children to school cohorts. For applicants outside of the UK the cohort cut off for England and Wales has been used.

Applicant

A person who has made an application in the UCAS system during the cycle reported (including applications for deferred entry). Records of prior acceptance (RPAs) are excluded.

Application

An application to a course at a provider made by an applicant in the UCAS main scheme. Applicants may make up to five main scheme applications.

Country of provider

An applicant may be counted once for each provider country they have applied to in the main scheme. If an applicant has applied to providers in multiple countries then the applicant is counted once within each country of provider applied to.

Domicile

Declared area of permanent residence. The Channel Islands and the Isle of Man have been assigned as 'Not EU'.

Ethnic group

High level grouping of ethnic origin as declared by the applicant: 'Asian', 'Black', 'Mixed', 'White', 'Other', 'Unknown'.

First time applicant

An applicant that did not apply to the UCAS scheme in the previous cycle.

Main scheme

The main UCAS application scheme through which up to five providers/courses can be applied to. This opens in September and closes to new applications on 30 June the following year.

Reapplicant

An applicant that applied to the UCAS scheme in the previous cycle.

Sex

As declared by the applicant.

SIMD 2016

Scottish Index of Multiple Deprivation identifies small area concentrations of multiple deprivation across all of Scotland, providing a relative measure of deprivation among small areas (data zones). In this report, the SIMD 2016 has been used to group areas in each year in the times series.

POLAR4

Developed by HEFCE and classifies small areas across the UK into five groups, according to their level of young participation in HE. Each of these groups represents around 20 per cent of young people, and is ranked from quintile 1 (areas with the lowest young participation rates, considered as the most disadvantaged) to quintile 5 (highest young participation rates, considered most advantaged). POLAR4 is the most recent version of the POLAR classification, and is available for the first time in UCAS reporting since its launch in 2017.

Tariff Group of provider

Providers are grouped as higher, medium or lower tariff based on their average levels of attainment of their accepted applicants (summarised through UCAS Tariff points) in recent cycles. Each group of providers accounted for around a third of all UK 18 year old acceptances in recent cycles.

Subject group

The JACS3 classification used to classify courses into subject groups. With the introduction of HECoS for the 2019 cycle, new courses that were classified using HECoS instead of JACS have been allocated modelled JACS3 values.

Subject group (HECoS)

The CAH classification used to categorise HECoS course subject codes into subject groups. A course may be associated with up to 5 individual subject codes and their respective percentage weight. For this analysis, application totals for subject groups have been calculated by apportioning course applications as weighted by subject group.