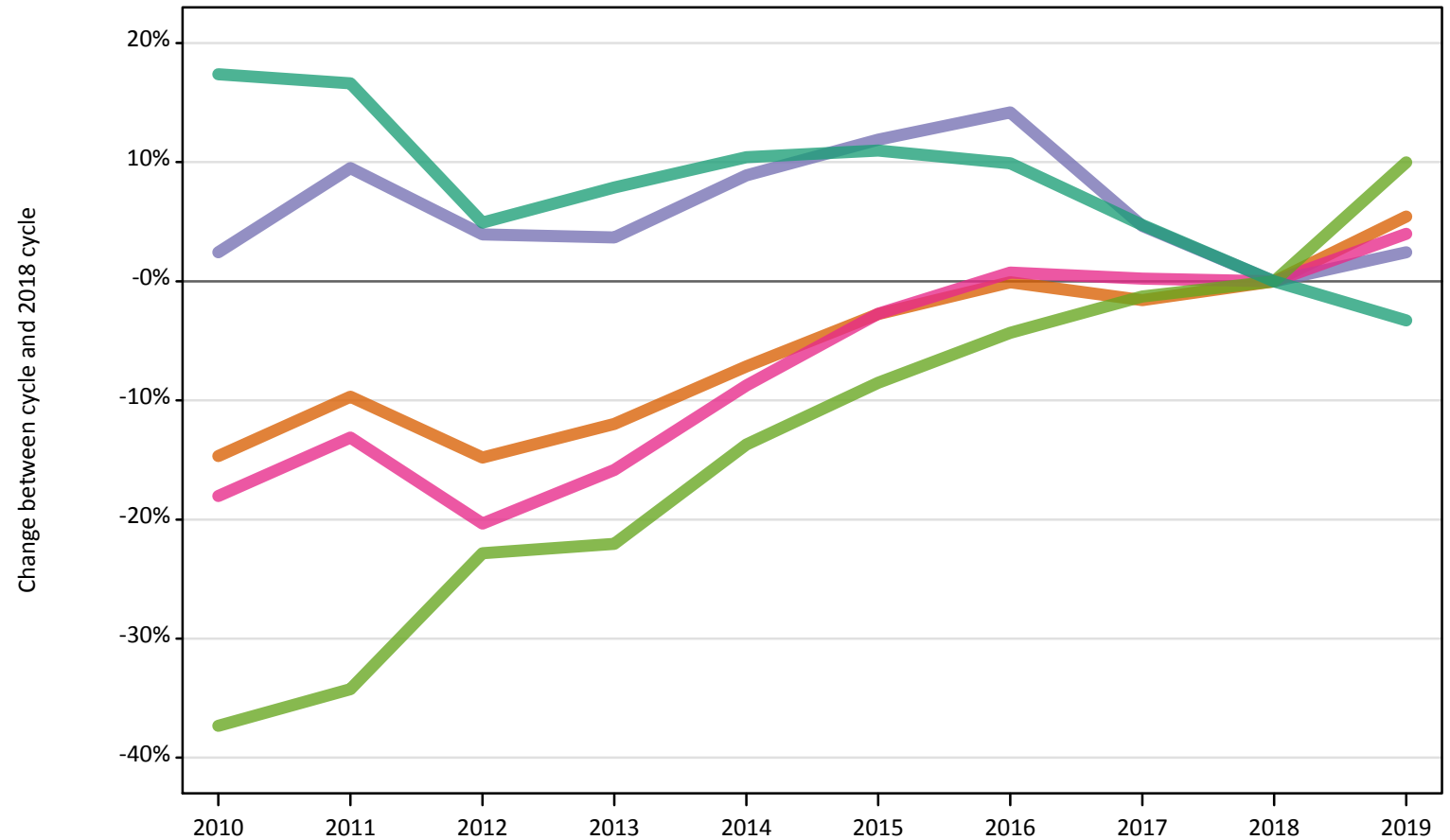


June Deadline Analysis: Ethnic group

Applicants by ethnic group and age at the 30 June deadline

I.10.1 Applicants by ethnic group: UK Difference between cycle and 2018 cycle

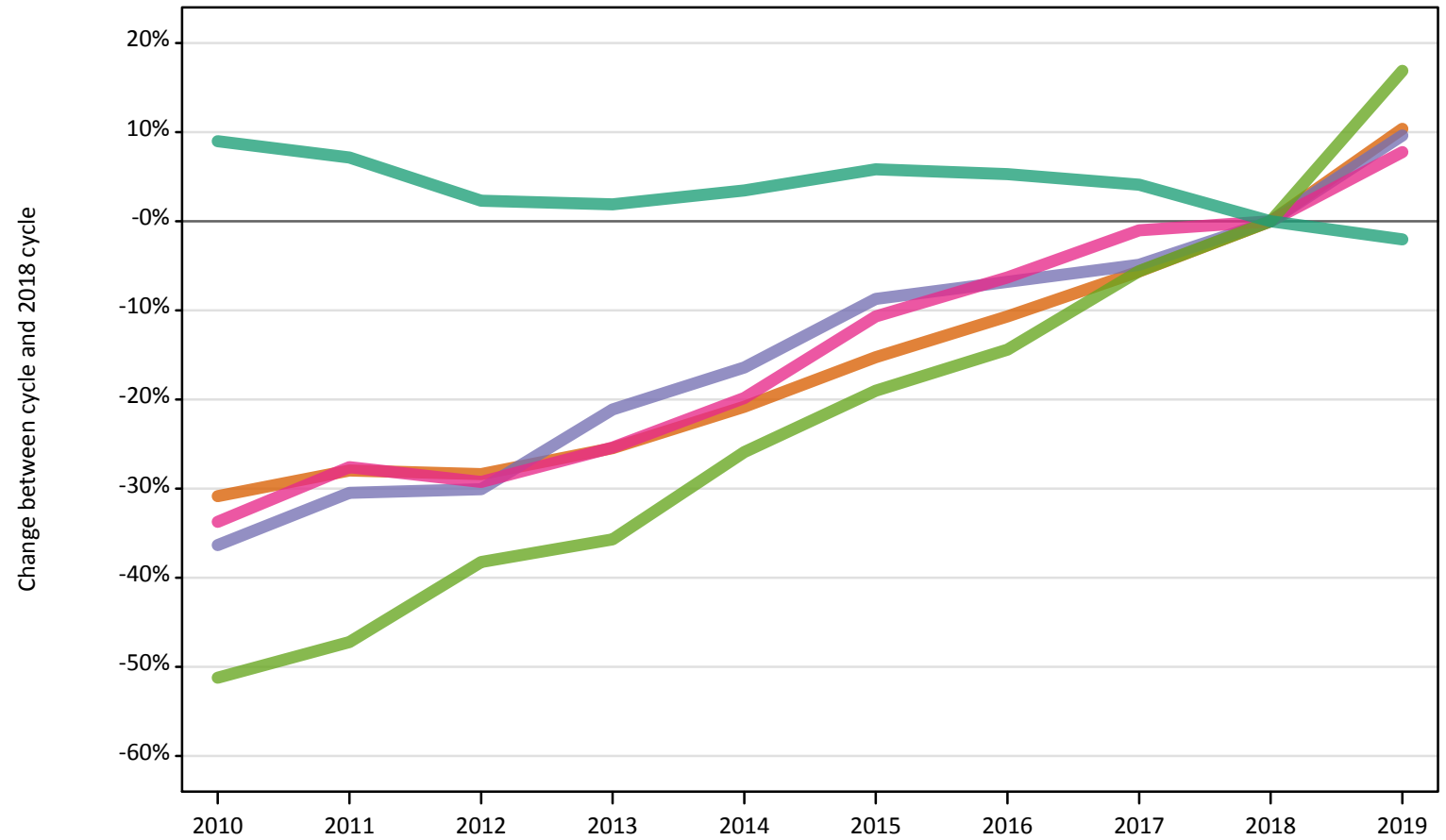
- Asian
- Black
- Mixed
- White
- Other



Note: The percentage change is not plotted in the above chart for groups with fewer than 500 applicants in any one cycle.

I.10.2 18 year old applicants by ethnic group: UK
Difference between cycle and 2018 cycle

- Asian
- Black
- Mixed
- White
- Other



Note: The percentage change is not plotted in the above chart for groups with fewer than 500 applicants in any one cycle.

I.10.3 Applicants by age and ethnic group: UK

Age group and ethnic group of applicant		2010	2011	2012	2013	2014	2015	2016	2017	2018	2019
Under 18	Asian	240	200	200	180	150	200	160	180	200	210
	Black	130	130	90	100	110	100	110	110	130	110
	Mixed	130	100	90	80	100	90	90	100	110	110
	White	1,980	1,780	1,390	1,250	1,290	1,330	1,420	1,280	1,200	1,150
	Other	50	40	50	60	50	70	60	60	50	70
18	Asian	24,220	25,230	25,090	26,100	27,730	29,680	31,290	33,060	35,020	38,650
	Black	9,360	10,230	10,290	11,600	12,300	13,430	13,710	13,990	14,710	16,130
	Mixed	8,130	8,880	8,670	9,150	9,830	10,950	11,490	12,130	12,260	13,210
	White	223,110	219,370	209,440	208,620	211,800	216,690	215,580	213,150	204,740	200,580
	Other	2,130	2,310	2,700	2,810	3,240	3,540	3,740	4,130	4,370	5,110
19	Asian	12,600	13,960	12,800	13,630	14,100	14,750	14,880	14,100	13,730	13,630
	Black	6,210	6,830	6,470	6,820	7,390	7,820	7,960	7,410	6,990	7,190
	Mixed	3,990	4,120	3,540	4,050	4,420	4,610	4,870	4,690	4,600	4,700
	White	77,560	80,540	64,520	72,620	73,070	72,510	72,060	67,000	62,820	59,340
	Other	1,250	1,280	1,590	1,680	1,860	2,010	2,120	2,120	2,110	2,200
20 and over	Asian	16,030	16,810	14,940	14,880	15,810	15,900	15,850	13,920	13,290	13,130
	Black	26,020	27,420	25,490	23,710	24,550	24,220	24,720	21,100	18,910	18,300
	Mixed	6,730	7,020	6,140	6,210	6,780	6,860	6,870	6,270	6,180	6,050
	White	132,820	130,980	113,970	117,740	123,520	121,230	118,760	107,070	102,280	97,780
	Other	2,540	2,640	3,010	2,880	3,070	3,090	3,200	3,100	2,990	3,100
All ages	Asian	53,100	56,200	53,020	54,790	57,790	60,530	62,190	61,260	62,240	65,610
	Black	41,720	44,600	42,330	42,230	44,350	45,570	46,510	42,620	40,730	41,720
	Mixed	18,970	20,110	18,440	19,480	21,120	22,510	23,310	23,200	23,140	24,070
	White	435,470	432,670	389,320	400,220	409,670	411,760	407,810	388,490	371,030	358,850
	Other	5,970	6,260	7,350	7,420	8,220	8,710	9,110	9,400	9,520	10,470

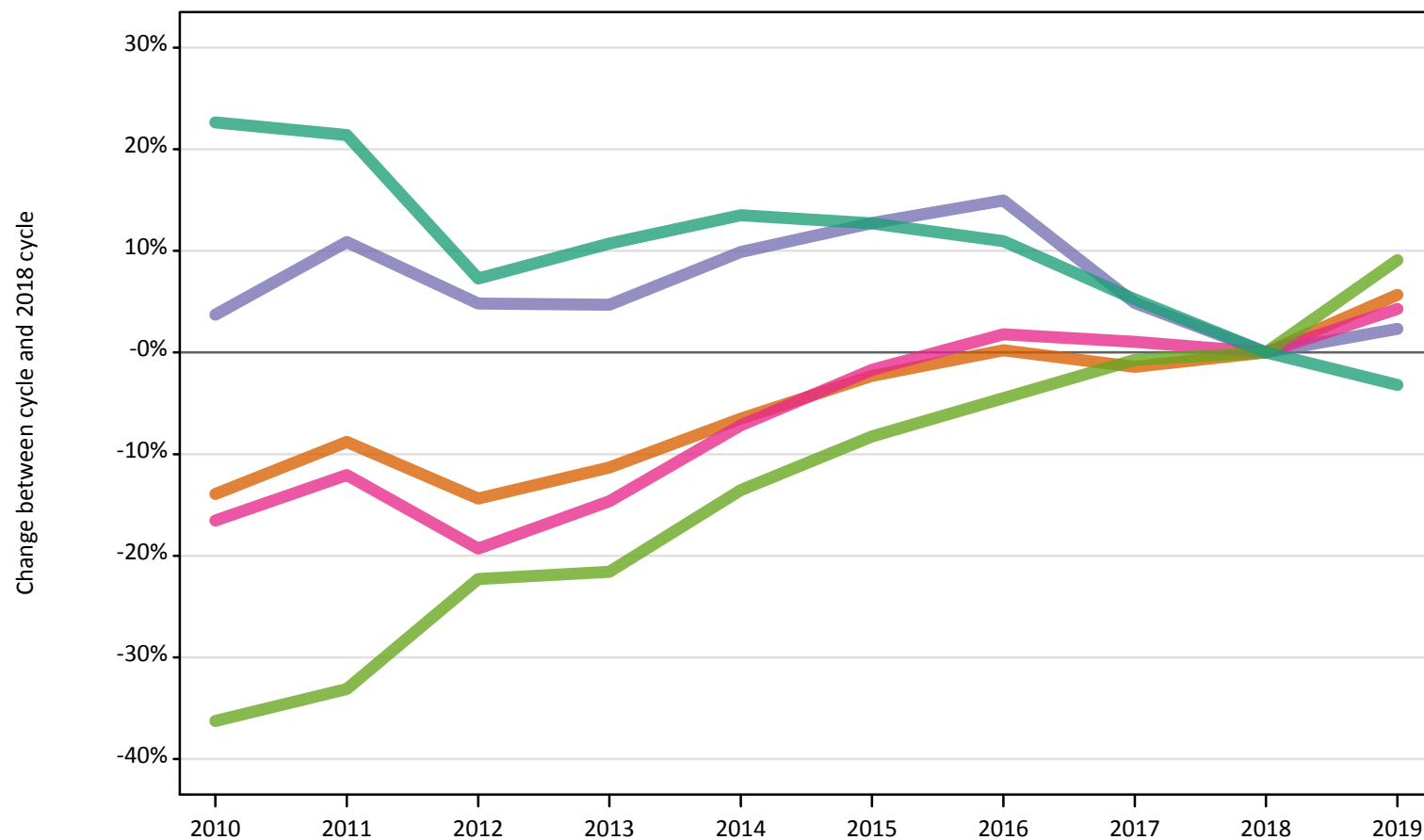
I.10.4 Applicants by age and ethnic group: UK
Difference between cycle and 2018 cycle

Age group and ethnic group of applicant		2010	2011	2012	2013	2014	2015	2016	2017	2018	2019
Under 18	Asian	23%	2%	0%	-8%	-24%	-1%	-18%	-8%	0%	4%
	Black	3%	1%	-30%	-19%	-12%	-19%	-10%	-10%	0%	-15%
	Mixed	17%	-9%	-17%	-30%	-10%	-15%	-20%	-8%	0%	2%
	White	65%	48%	15%	3%	7%	10%	18%	6%	0%	-4%
	Other	-2%	-31%	-8%	8%	0%	29%	8%	21%	0%	27%
18	Asian	-31%	-28%	-28%	-25%	-21%	-15%	-11%	-6%	0%	10%
	Black	-36%	-30%	-30%	-21%	-16%	-9%	-7%	-5%	0%	10%
	Mixed	-34%	-28%	-29%	-25%	-20%	-11%	-6%	-1%	0%	8%
	White	9%	7%	2%	2%	3%	6%	5%	4%	0%	-2%
	Other	-51%	-47%	-38%	-36%	-26%	-19%	-14%	-6%	0%	17%
19	Asian	-8%	2%	-7%	-1%	3%	7%	8%	3%	0%	-1%
	Black	-11%	-2%	-7%	-2%	6%	12%	14%	6%	0%	3%
	Mixed	-13%	-11%	-23%	-12%	-4%	0%	6%	2%	0%	2%
	White	23%	28%	3%	16%	16%	15%	15%	7%	0%	-6%
	Other	-41%	-39%	-24%	-20%	-12%	-5%	0%	0%	0%	4%
20 and over	Asian	21%	27%	12%	12%	19%	20%	19%	5%	0%	-1%
	Black	38%	45%	35%	25%	30%	28%	31%	12%	0%	-3%
	Mixed	9%	14%	-1%	1%	10%	11%	11%	2%	0%	-2%
	White	30%	28%	11%	15%	21%	19%	16%	5%	0%	-4%
	Other	-15%	-12%	1%	-4%	2%	3%	7%	3%	0%	4%
All ages	Asian	-15%	-10%	-15%	-12%	-7%	-3%	-0%	-2%	0%	5%
	Black	2%	9%	4%	4%	9%	12%	14%	5%	0%	2%
	Mixed	-18%	-13%	-20%	-16%	-9%	-3%	1%	0%	0%	4%
	White	17%	17%	5%	8%	10%	11%	10%	5%	0%	-3%
	Other	-37%	-34%	-23%	-22%	-14%	-9%	-4%	-1%	0%	10%

Note: The percentage change is not recorded in the above table for groups with fewer than 10 applicants in that cycle or in the 2018 cycle.

I.10.5 Applicants by ethnic group: England Difference between cycle and 2018 cycle

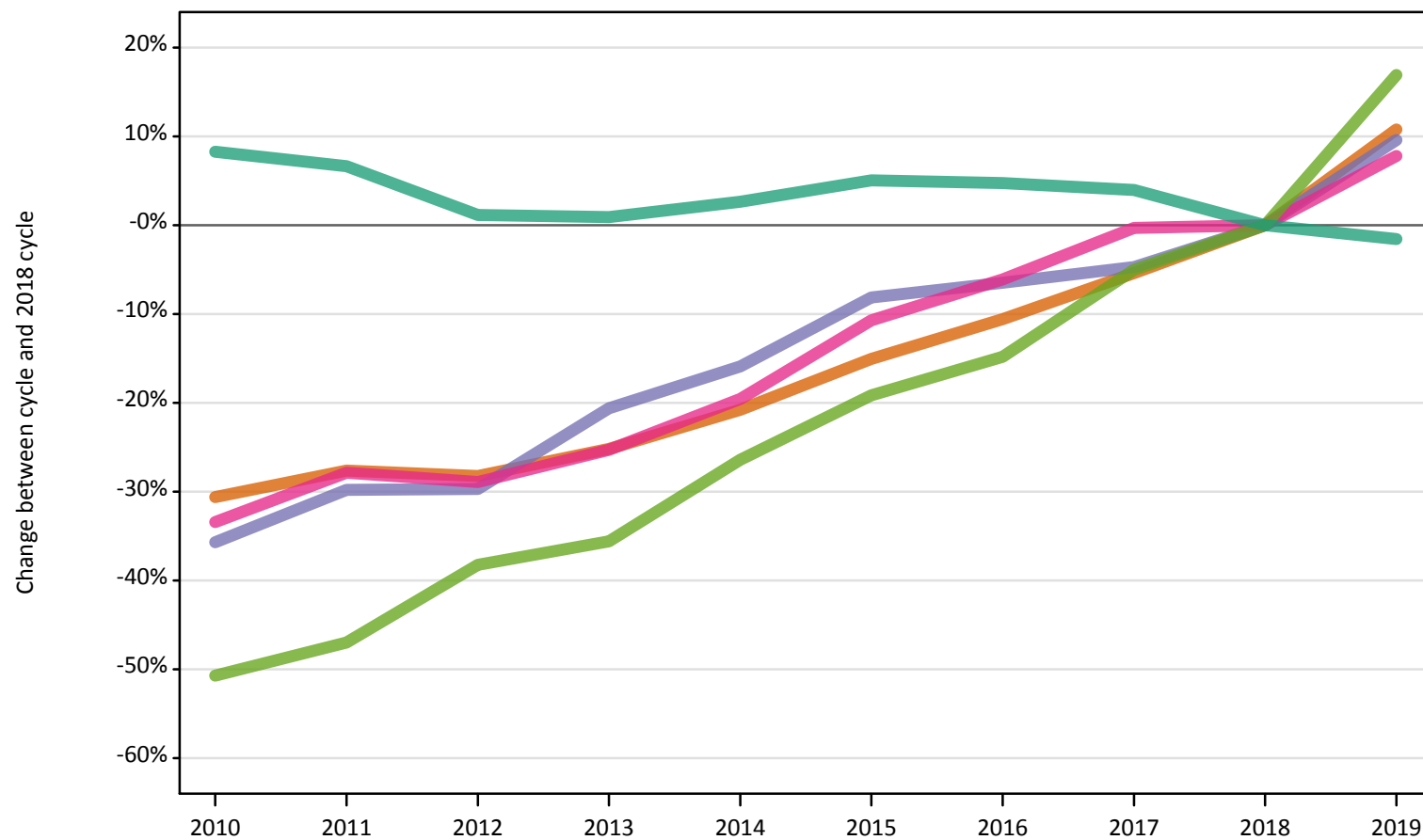
- Asian
- Black
- Mixed
- White
- Other



Note: The percentage change is not plotted in the above chart for groups with fewer than 500 applicants in any one cycle.

I.10.6 18 year old applicants by ethnic group: England Difference between cycle and 2018 cycle

- Asian
- Black
- Mixed
- White
- Other



Note: The percentage change is not plotted in the above chart for groups with fewer than 500 applicants in any one cycle.

I.10.7 Applicants by age and ethnic group: England

Age group and ethnic group of applicant		2010	2011	2012	2013	2014	2015	2016	2017	2018	2019
Under 18	Asian	180	140	150	140	110	160	110	130	130	140
	Black	110	110	80	90	100	90	90	90	110	80
	Mixed	100	80	60	60	70	70	70	80	90	80
	White	1,000	860	600	560	630	620	670	530	490	430
	Other	50	30	40	40	40	60	50	50	40	50
18	Asian	23,170	24,170	23,950	24,980	26,440	28,350	29,860	31,590	33,380	36,980
	Black	9,240	10,080	10,100	11,400	12,080	13,190	13,430	13,680	14,360	15,740
	Mixed	7,630	8,270	8,150	8,570	9,230	10,240	10,770	11,430	11,470	12,360
	White	181,180	178,450	169,280	168,890	171,770	175,780	175,280	173,960	167,350	164,730
	Other	2,060	2,220	2,580	2,690	3,070	3,380	3,560	3,970	4,180	4,880
19	Asian	12,110	13,470	12,250	13,100	13,580	14,180	14,320	13,500	13,150	13,030
	Black	6,130	6,710	6,350	6,700	7,260	7,690	7,820	7,270	6,830	7,020
	Mixed	3,790	3,900	3,320	3,830	4,210	4,360	4,580	4,430	4,320	4,390
	White	66,310	68,420	52,920	60,840	61,100	60,450	59,270	54,950	51,000	48,070
	Other	1,210	1,240	1,520	1,620	1,790	1,940	2,030	2,020	2,030	2,090
20 and over	Asian	15,020	15,720	13,870	13,780	14,680	14,610	14,490	12,610	11,980	11,820
	Black	25,260	26,640	24,640	22,930	23,730	23,310	23,820	20,150	17,980	17,350
	Mixed	6,290	6,520	5,690	5,760	6,300	6,310	6,310	5,620	5,470	5,430
	White	106,200	103,320	87,490	89,940	94,780	89,070	85,680	74,870	70,370	66,780
	Other	2,400	2,520	2,840	2,680	2,850	2,860	2,940	2,870	2,730	2,770
All ages	Asian	50,480	53,490	50,230	52,010	54,820	57,300	58,780	57,830	58,650	61,980
	Black	40,740	43,550	41,170	41,130	43,160	44,280	45,160	41,190	39,280	40,200
	Mixed	17,820	18,770	17,230	18,220	19,810	20,980	21,730	21,570	21,340	22,260
	White	354,690	351,040	310,280	320,220	328,270	325,920	320,890	304,300	289,200	280,010
	Other	5,720	6,000	6,970	7,040	7,760	8,230	8,570	8,910	8,970	9,790

I.10.8 Applicants by age and ethnic group: England
Difference between cycle and 2018 cycle

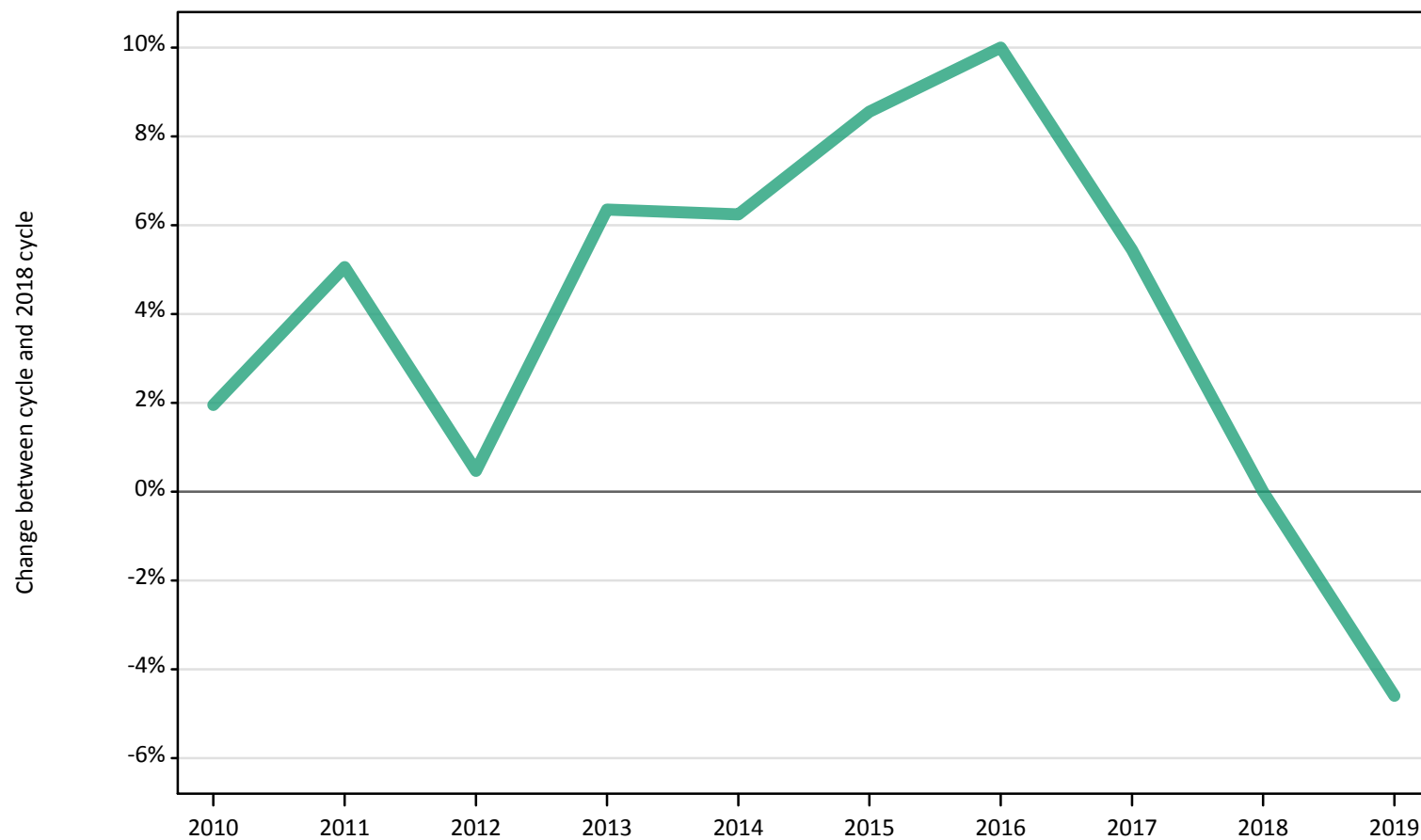
Age group and ethnic group of applicant		2010	2011	2012	2013	2014	2015	2016	2017	2018	2019
Under 18	Asian	32%	3%	14%	7%	-15%	20%	-15%	0%	0%	7%
	Black	8%	7%	-26%	-18%	-3%	-16%	-12%	-13%	0%	-25%
	Mixed	10%	-14%	-33%	-33%	-17%	-16%	-23%	-5%	0%	-5%
	White	105%	76%	23%	15%	28%	27%	37%	8%	0%	-13%
	Other	5%	-25%	-11%	-2%	0%	34%	5%	9%	0%	18%
18	Asian	-31%	-28%	-28%	-25%	-21%	-15%	-11%	-5%	0%	11%
	Black	-36%	-30%	-30%	-21%	-16%	-8%	-6%	-5%	0%	10%
	Mixed	-33%	-28%	-29%	-25%	-20%	-11%	-6%	-0%	0%	8%
	White	8%	7%	1%	1%	3%	5%	5%	4%	0%	-2%
	Other	-51%	-47%	-38%	-36%	-26%	-19%	-15%	-5%	0%	17%
19	Asian	-8%	2%	-7%	-0%	3%	8%	9%	3%	0%	-1%
	Black	-10%	-2%	-7%	-2%	6%	13%	14%	6%	0%	3%
	Mixed	-12%	-10%	-23%	-11%	-2%	1%	6%	3%	0%	2%
	White	30%	34%	4%	19%	20%	19%	16%	8%	0%	-6%
	Other	-40%	-39%	-25%	-20%	-12%	-4%	0%	-0%	0%	3%
20 and over	Asian	25%	31%	16%	15%	23%	22%	21%	5%	0%	-1%
	Black	40%	48%	37%	28%	32%	30%	32%	12%	0%	-3%
	Mixed	15%	19%	4%	5%	15%	15%	15%	3%	0%	-1%
	White	51%	47%	24%	28%	35%	27%	22%	6%	0%	-5%
	Other	-12%	-8%	4%	-2%	5%	5%	8%	5%	0%	1%
All ages	Asian	-14%	-9%	-14%	-11%	-7%	-2%	0%	-1%	0%	6%
	Black	4%	11%	5%	5%	10%	13%	15%	5%	0%	2%
	Mixed	-17%	-12%	-19%	-15%	-7%	-2%	2%	1%	0%	4%
	White	23%	21%	7%	11%	14%	13%	11%	5%	0%	-3%
	Other	-36%	-33%	-22%	-22%	-14%	-8%	-4%	-1%	0%	9%

Note: The percentage change is not recorded in the above table for groups with fewer than 10 applicants in that cycle or in the 2018 cycle.

I.10.9 Applicants by ethnic group: Northern Ireland

Difference between cycle and 2018 cycle

- Asian
- Black
- Mixed
- White
- Other

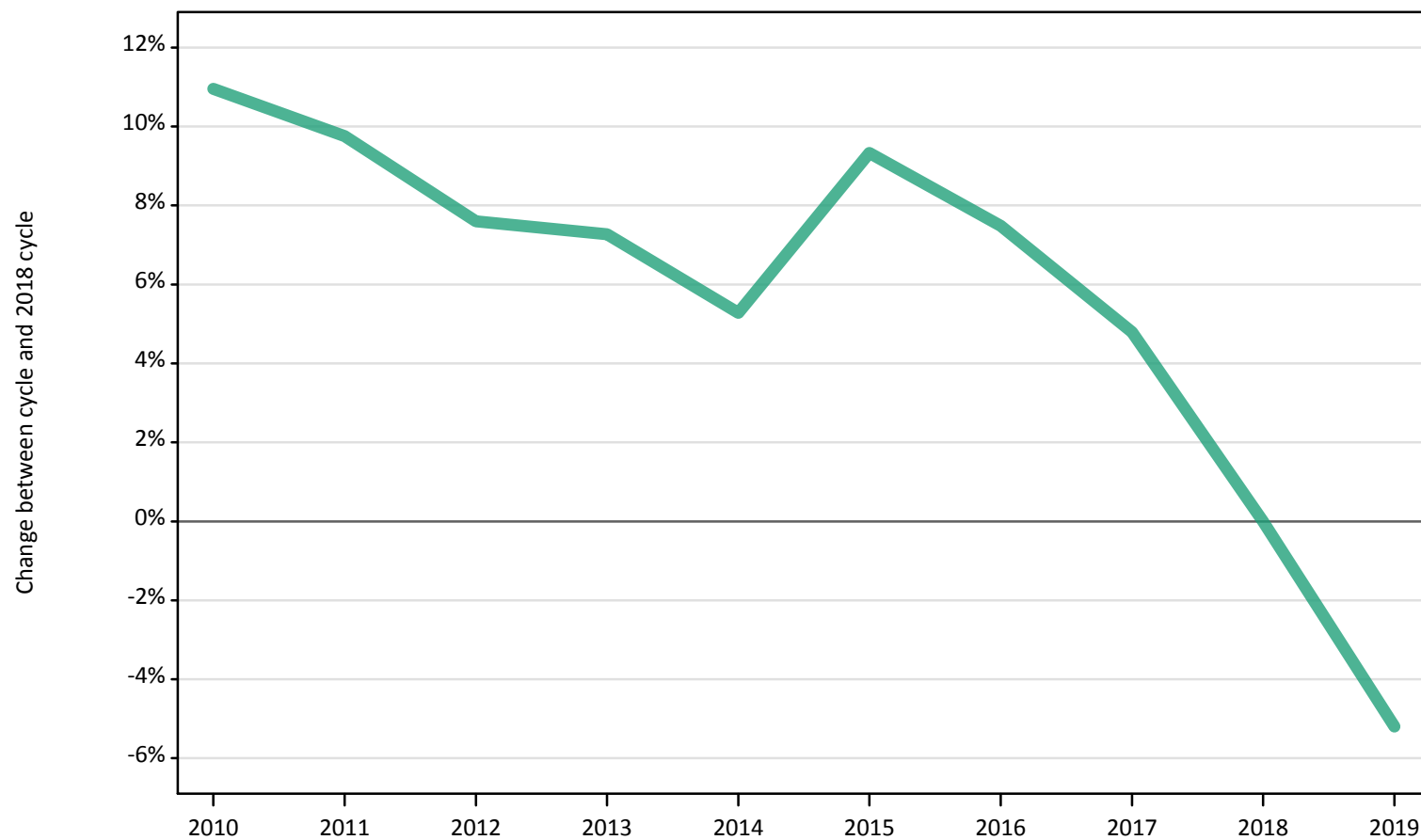


Note: The percentage change is not plotted in the above chart for groups with fewer than 500 applicants in any one cycle.

I.10.10 18 year old applicants by ethnic group: Northern Ireland

Difference between cycle and 2018 cycle

- Asian
- Black
- Mixed
- White
- Other



Note: The percentage change is not plotted in the above chart for groups with fewer than 500 applicants in any one cycle.

I.10.11 Applicants by age and ethnic group: Northern Ireland

Age group and ethnic group of applicant		2010	2011	2012	2013	2014	2015	2016	2017	2018	2019
Under 18	Asian	0	0	0	0	0	0	0	0	0	0
	Black	0	0	0	0	0	0	0	0	0	0
	Mixed	0	0	0	0	0	0	0	0	0	0
	White	50	40	50	30	20	30	40	20	20	30
	Other	0	0	0	0	0	0	0	0	0	0
18	Asian	90	90	90	110	110	130	140	140	160	180
	Black	10	10	10	20	20	20	20	30	20	30
	Mixed	70	90	60	80	80	100	100	100	130	100
	White	11,870	11,740	11,510	11,480	11,270	11,700	11,500	11,210	10,700	10,140
	Other	10	10	10	10	10	10	10	10	20	20
19	Asian	30	40	50	60	40	50	70	60	50	70
	Black	0	10	0	0	10	10	20	10	20	20
	Mixed	30	20	20	20	20	20	30	40	30	50
	White	2,550	3,030	2,670	2,950	3,040	3,080	3,480	3,250	3,050	2,930
	Other	10	10	0	0	10	10	10	10	10	10
20 and over	Asian	50	50	60	50	50	70	70	60	70	70
	Black	40	30	40	40	50	40	50	50	50	50
	Mixed	30	50	30	50	40	50	40	50	60	50
	White	4,520	4,760	4,490	5,350	5,470	5,420	5,480	5,170	4,860	4,670
	Other	10	10	10	20	10	10	20	10	10	10
All ages	Asian	170	190	200	210	210	250	280	260	280	320
	Black	50	60	50	70	80	70	90	90	90	110
	Mixed	120	160	120	140	150	180	170	190	220	200
	White	19,000	19,570	18,720	19,820	19,790	20,230	20,490	19,650	18,630	17,780
	Other	30	20	30	30	30	30	30	30	40	40

I.10.12 Applicants by age and ethnic group: Northern Ireland

Difference between cycle and 2018 cycle

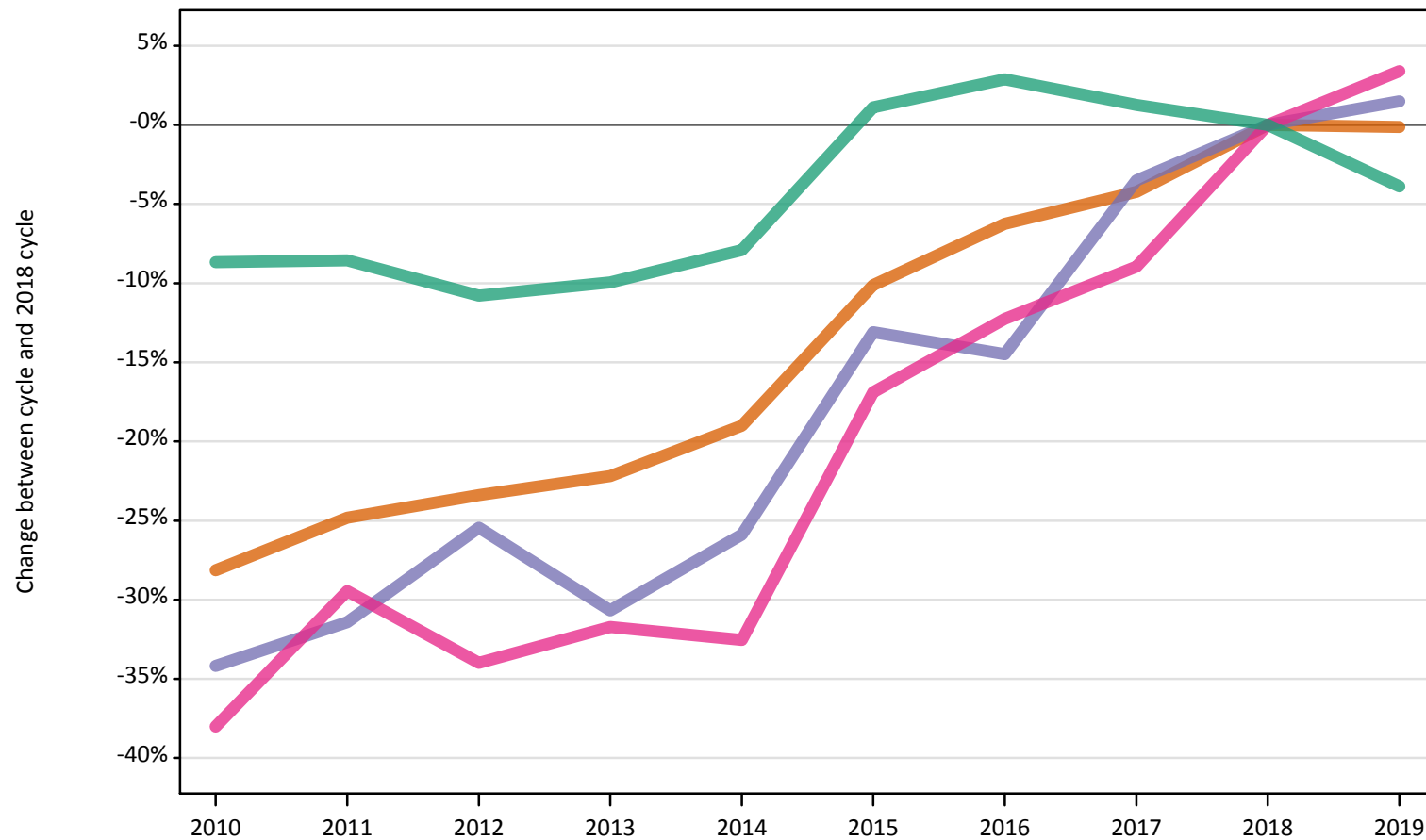
Age group and ethnic group of applicant		2010	2011	2012	2013	2014	2015	2016	2017	2018	2019
Under 18	Asian										
	Black										
	Mixed										
	White	135%	91%	96%	48%	4%	30%	57%	-4%	0%	30%
	Other										
18	Asian	-44%	-40%	-45%	-33%	-27%	-19%	-12%	-9%	0%	17%
	Black	-63%	-37%	-32%	5%	5%	-16%	26%	37%	0%	68%
	Mixed	-46%	-34%	-52%	-40%	-38%	-23%	-25%	-20%	0%	-22%
	White	11%	10%	8%	7%	5%	9%	7%	5%	0%	-5%
	Other	-53%	-58%	-42%	-58%	-26%	-58%	-37%	-32%	0%	-5%
19	Asian	-32%	-20%	4%	12%	-12%	-6%	34%	20%	0%	30%
	Black		-50%			-44%	-67%	-11%	-44%	0%	11%
	Mixed	0%	-12%	-12%	-35%	-27%	-12%	15%	46%	0%	100%
	White	-16%	-1%	-13%	-3%	-1%	1%	14%	6%	0%	-4%
	Other	17%	-17%			0%	0%	-17%	17%	0%	50%
20 and over	Asian	-30%	-19%	-9%	-28%	-21%	6%	1%	-12%	0%	3%
	Black	-19%	-28%	-23%	-13%	11%	-6%	15%	11%	0%	11%
	Mixed	-55%	-20%	-52%	-22%	-28%	-10%	-37%	-25%	0%	-17%
	White	-7%	-2%	-8%	10%	13%	12%	13%	6%	0%	-4%
	Other	-21%	-21%	-21%	29%	-7%	-14%	7%	-14%	0%	0%
All ages	Asian	-38%	-31%	-27%	-24%	-23%	-11%	-0%	-5%	0%	15%
	Black	-45%	-35%	-39%	-22%	-4%	-21%	11%	5%	0%	27%
	Mixed	-43%	-27%	-46%	-34%	-32%	-18%	-22%	-13%	0%	-6%
	White	2%	5%	0%	6%	6%	9%	10%	5%	0%	-5%
	Other	-33%	-40%	-35%	-30%	-18%	-35%	-20%	-20%	0%	3%

Note: The percentage change is not recorded in the above table for groups with fewer than 10 applicants in that cycle or in the 2018 cycle.

I.10.13 Applicants by ethnic group: Scotland

Difference between cycle and 2018 cycle

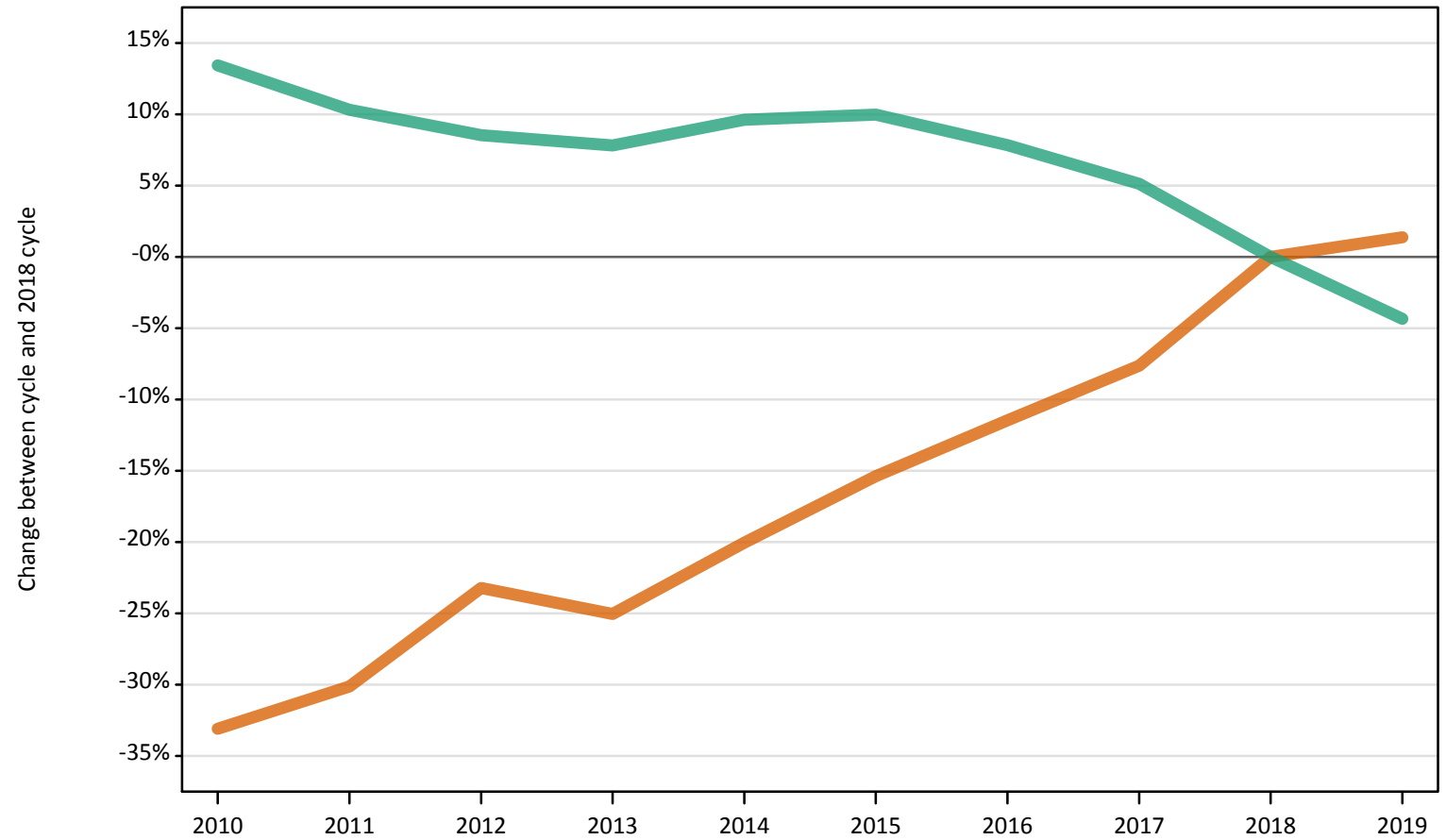
- Asian
- Black
- Mixed
- White
- Other



Note: The percentage change is not plotted in the above chart for groups with fewer than 500 applicants in any one cycle.

I.10.14 18 year old applicants by ethnic group: Scotland
Difference between cycle and 2018 cycle

- Asian
- Black
- Mixed
- White
- Other



Note: The percentage change is not plotted in the above chart for groups with fewer than 500 applicants in any one cycle.

I.10.15 Applicants by age and ethnic group: Scotland

Age group and ethnic group of applicant		2010	2011	2012	2013	2014	2015	2016	2017	2018	2019
Under 18	Asian	60	60	40	40	30	30	40	50	60	60
	Black	20	10	10	10	10	10	20	20	20	20
	Mixed	20	20	20	10	20	20	10	10	20	20
	White	880	840	730	620	610	660	690	710	670	680
	Other	10	0	10	10	10	10	10	10	10	10
18	Asian	630	660	720	710	750	800	840	870	940	960
	Black	70	80	90	110	100	130	140	170	210	210
	Mixed	230	290	250	290	280	330	350	350	370	420
	White	18,740	18,220	17,930	17,810	18,110	18,170	17,820	17,370	16,520	15,800
	Other	20	50	60	60	60	90	90	80	90	110
19	Asian	270	280	290	280	280	300	310	330	340	310
	Black	30	50	40	40	50	60	60	70	80	80
	Mixed	90	100	90	110	100	110	140	130	140	140
	White	5,010	5,140	5,210	5,090	5,060	5,230	5,420	5,300	5,410	5,080
	Other	10	20	30	20	20	30	40	40	40	50
20 and over	Asian	700	740	720	780	810	960	990	980	980	1,000
	Black	500	500	560	490	540	620	590	660	640	640
	Mixed	260	280	270	260	260	350	350	400	440	430
	White	15,320	15,790	15,150	15,860	16,500	20,160	21,070	20,910	21,140	20,480
	Other	70	70	90	110	120	150	160	140	180	220
All ages	Asian	1,670	1,750	1,780	1,810	1,880	2,090	2,180	2,220	2,320	2,320
	Black	620	640	700	650	700	820	800	910	940	950
	Mixed	600	690	640	660	660	810	850	880	970	1,000
	White	39,940	39,990	39,020	39,380	40,280	44,220	44,990	44,290	43,740	42,040
	Other	110	130	190	200	210	270	300	280	320	390

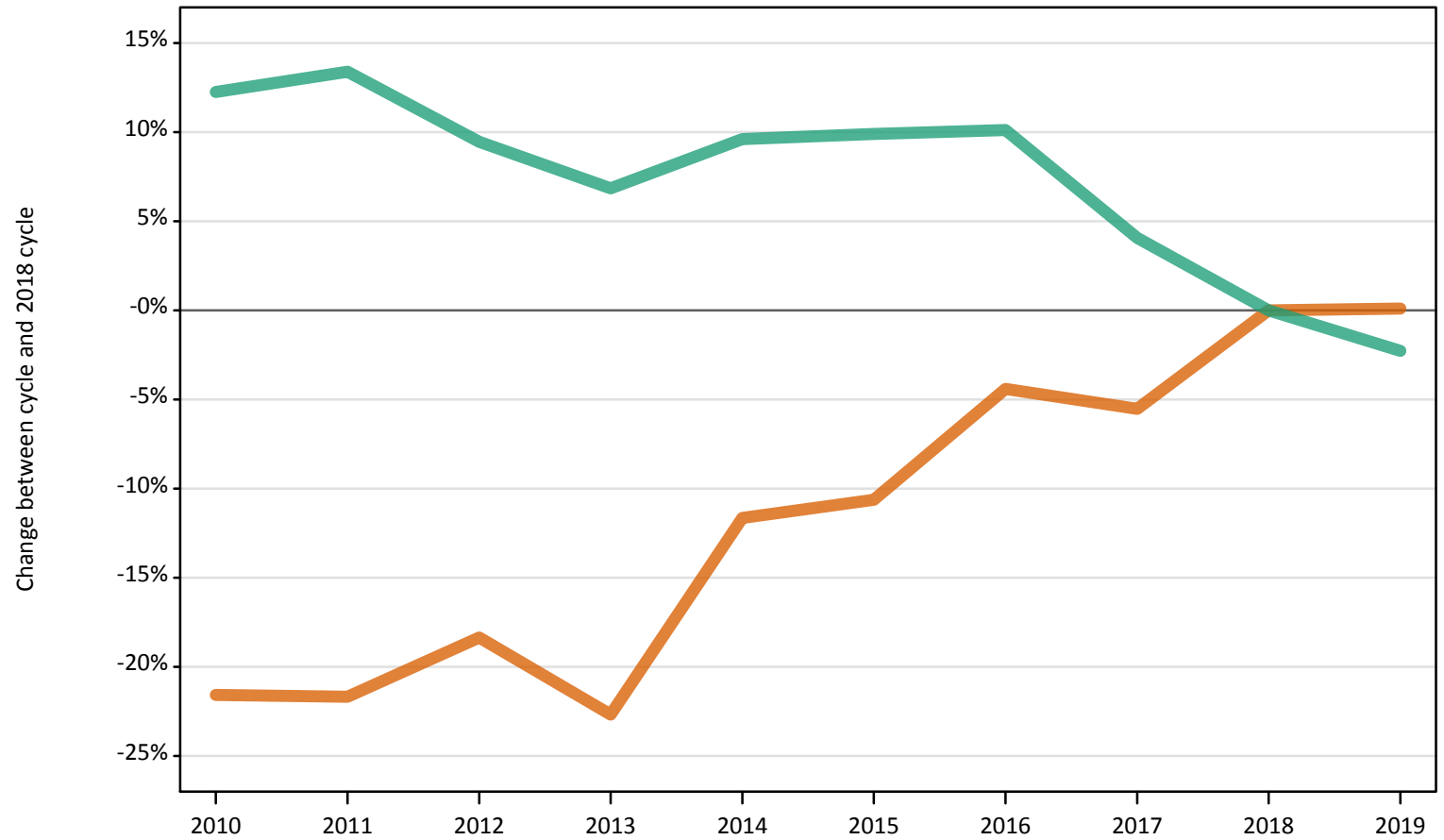
I.10.16 Applicants by age and ethnic group: Scotland
Difference between cycle and 2018 cycle

Age group and ethnic group of applicant		2010	2011	2012	2013	2014	2015	2016	2017	2018	2019
Under 18	Asian	3%	-3%	-32%	-38%	-45%	-47%	-27%	-23%	0%	0%
	Black	-12%	-29%	-47%	-53%	-65%	-35%	6%	12%	0%	24%
	Mixed	22%	-11%	33%	-28%	6%	-17%	-22%	-28%	0%	22%
	White	31%	25%	8%	-7%	-9%	-1%	3%	6%	0%	1%
	Other	-29%		0%	43%	0%	-14%	29%	71%	0%	100%
18	Asian	-33%	-30%	-23%	-25%	-20%	-15%	-11%	-8%	0%	1%
	Black	-65%	-60%	-56%	-48%	-50%	-40%	-33%	-21%	0%	1%
	Mixed	-37%	-21%	-31%	-23%	-23%	-11%	-7%	-6%	0%	13%
	White	13%	10%	9%	8%	10%	10%	8%	5%	0%	-4%
	Other	-76%	-50%	-39%	-31%	-31%	-6%	-6%	-12%	0%	26%
19	Asian	-19%	-15%	-13%	-17%	-17%	-11%	-9%	-3%	0%	-9%
	Black	-56%	-33%	-41%	-44%	-33%	-24%	-21%	-13%	0%	11%
	Mixed	-39%	-29%	-36%	-25%	-31%	-19%	0%	-10%	0%	-3%
	White	-7%	-5%	-4%	-6%	-6%	-3%	0%	-2%	0%	-6%
	Other	-77%	-56%	-28%	-56%	-44%	-42%	-9%	-2%	0%	5%
20 and over	Asian	-28%	-24%	-27%	-20%	-17%	-2%	1%	-0%	0%	1%
	Black	-22%	-22%	-13%	-23%	-16%	-3%	-8%	3%	0%	0%
	Mixed	-41%	-37%	-39%	-41%	-42%	-21%	-20%	-11%	0%	-3%
	White	-28%	-25%	-28%	-25%	-22%	-5%	-0%	-1%	0%	-3%
	Other	-61%	-64%	-49%	-37%	-34%	-15%	-9%	-20%	0%	21%
All ages	Asian	-28%	-25%	-23%	-22%	-19%	-10%	-6%	-4%	0%	-0%
	Black	-34%	-31%	-25%	-31%	-26%	-13%	-14%	-4%	0%	1%
	Mixed	-38%	-29%	-34%	-32%	-33%	-17%	-12%	-9%	0%	3%
	White	-9%	-9%	-11%	-10%	-8%	1%	3%	1%	0%	-4%
	Other	-66%	-60%	-42%	-36%	-34%	-16%	-8%	-13%	0%	22%

Note: The percentage change is not recorded in the above table for groups with fewer than 10 applicants in that cycle or in the 2018 cycle.

I.10.17 Applicants by ethnic group: Wales
Difference between cycle and 2018 cycle

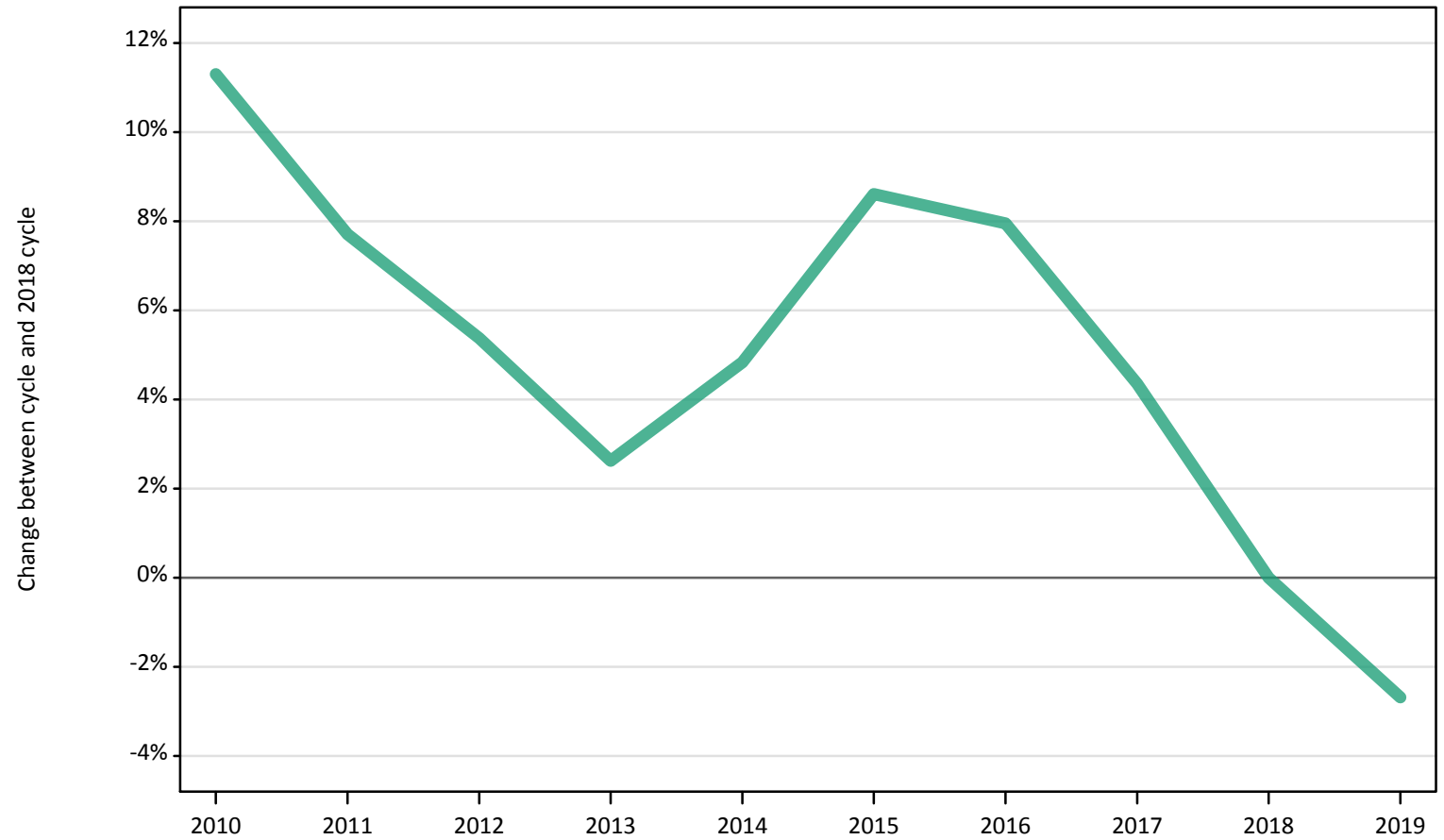
- Asian
- Black
- Mixed
- White
- Other



Note: The percentage change is not plotted in the above chart for groups with fewer than 500 applicants in any one cycle.

I.10.18 18 year old applicants by ethnic group: Wales
Difference between cycle and 2018 cycle

- Asian
- Black
- Mixed
- White
- Other



Note: The percentage change is not plotted in the above chart for groups with fewer than 500 applicants in any one cycle.

I.10.19 Applicants by age and ethnic group: Wales

Age group and ethnic group of applicant		2010	2011	2012	2013	2014	2015	2016	2017	2018	2019
Under 18	Asian	10	0	0	0	0	0	0	0	0	0
	Black	0	0	0	0	0	0	0	0	0	0
	Mixed	10	0	0	0	0	0	0	0	0	0
	White	40	40	20	30	20	20	20	20	20	20
	Other	0	0	0	0	0	0	0	0	0	0
18	Asian	330	310	330	310	420	400	460	460	540	530
	Black	50	50	90	70	100	90	110	120	120	150
	Mixed	190	230	200	220	240	280	270	250	290	330
	White	11,320	10,960	10,720	10,440	10,660	11,050	10,980	10,610	10,170	9,900
	Other	40	40	50	50	90	70	80	70	80	90
19	Asian	180	170	200	190	200	220	190	210	200	220
	Black	50	50	70	70	70	70	70	70	60	60
	Mixed	90	90	100	90	90	110	120	100	120	130
	White	3,690	3,960	3,720	3,740	3,880	3,750	3,900	3,510	3,360	3,260
	Other	20	20	40	40	40	40	40	50	30	60
20 and over	Asian	260	300	290	260	260	270	300	280	260	250
	Black	220	240	250	240	240	250	260	240	240	250
	Mixed	150	170	150	140	180	150	170	210	200	140
	White	6,790	7,120	6,850	6,590	6,770	6,580	6,540	6,120	5,920	5,840
	Other	50	50	70	60	80	70	80	70	70	110
All ages	Asian	780	780	810	770	880	890	950	940	1,000	1,000
	Black	320	340	410	380	410	410	450	430	430	460
	Mixed	430	500	460	450	510	550	570	560	610	600
	White	21,850	22,070	21,310	20,800	21,340	21,390	21,430	20,260	19,470	19,020
	Other	110	110	160	150	210	180	210	180	190	250

I.10.20 Applicants by age and ethnic group: Wales

Difference between cycle and 2018 cycle

Age group and ethnic group of applicant		2010	2011	2012	2013	2014	2015	2016	2017	2018	2019
Under 18	Asian										
	Black										
	Mixed										
	White	95%	73%	-14%	41%	5%	-23%	-5%	-23%	0%	-14%
	Other										
18	Asian	-38%	-43%	-39%	-42%	-22%	-26%	-15%	-16%	0%	-2%
	Black	-62%	-60%	-27%	-42%	-19%	-24%	-6%	-2%	0%	21%
	Mixed	-35%	-22%	-30%	-26%	-18%	-4%	-7%	-15%	0%	12%
	White	11%	8%	5%	3%	5%	9%	8%	4%	0%	-3%
	Other	-50%	-55%	-37%	-40%	5%	-19%	0%	-21%	0%	11%
19	Asian	-7%	-13%	1%	-1%	2%	14%	-3%	6%	0%	13%
	Black	-20%	-13%	7%	16%	20%	18%	20%	15%	0%	0%
	Mixed	-22%	-21%	-15%	-23%	-23%	-6%	4%	-16%	0%	10%
	White	10%	18%	11%	11%	16%	12%	16%	5%	0%	-3%
	Other	-39%	-35%	23%	23%	32%	39%	32%	52%	0%	77%
20 and over	Asian	1%	16%	10%	2%	-1%	3%	16%	7%	0%	-5%
	Black	-8%	-1%	5%	-2%	-3%	2%	9%	-0%	0%	5%
	Mixed	-29%	-15%	-27%	-31%	-13%	-25%	-16%	3%	0%	-31%
	White	15%	20%	16%	11%	14%	11%	10%	3%	0%	-1%
	Other	-28%	-38%	-4%	-15%	14%	-4%	12%	-8%	0%	42%
All ages	Asian	-22%	-22%	-18%	-23%	-12%	-11%	-4%	-6%	0%	0%
	Black	-25%	-19%	-4%	-10%	-4%	-4%	7%	1%	0%	9%
	Mixed	-30%	-19%	-26%	-27%	-17%	-11%	-8%	-9%	0%	-2%
	White	12%	13%	9%	7%	10%	10%	10%	4%	0%	-2%
	Other	-40%	-43%	-14%	-19%	13%	-3%	11%	-3%	0%	34%

Note: The percentage change is not recorded in the above table for groups with fewer than 10 applicants in that cycle or in the 2018 cycle.

I.10.21 Technical notes and definitions

Applicants have been able to submit applications for all 2019 courses since early September.

Applicants who submit their applications to UCAS by the January deadline are considered 'on time' applicants for the large majority of courses offered through UCAS. Some art and design courses have a later deadline of 24 March. By definition all main scheme applications have been received by the 30 June deadline.

Counts of the number of applicants reported have been rounded to the nearest 10 applicants, this may result in instances where totals do not equal the sum of the components. Proportional changes have been rounded to the nearest whole percentage point.

Age

This statistical release uses country-specific age definitions which align with the cut off points for school/college cohorts within the different administrations of the UK. For England and Wales ages are defined on the 31 August, for Northern Ireland on the 1 July and for Scotland on the 28 February the following year. Defining ages in this way matches the assignment of children to school cohorts. For applicants outside of the UK the cohort cut off for England and Wales has been used.

Applicant

A person who has made an application in the UCAS system during the cycle reported (including applications for deferred entry). Records of prior acceptance (RPAs) are excluded.

Application

An application to a course at a provider made by an applicant in the UCAS main scheme. Applicants may make up to five main scheme applications.

Country of provider

An applicant may be counted once for each provider country they have applied to in the main scheme. If an applicant has applied to providers in multiple countries then the applicant is counted once within each country of provider applied to.

Domicile

Declared area of permanent residence. The Channel Islands and the Isle of Man have been assigned as 'Not EU'.

Ethnic group

High level grouping of ethnic origin as declared by the applicant: 'Asian', 'Black', 'Mixed', 'White', 'Other', 'Unknown'.

First time applicant

An applicant that did not apply to the UCAS scheme in the previous cycle.

Main scheme

The main UCAS application scheme through which up to five providers/courses can be applied to. This opens in September and closes to new applications on 30 June the following year.

Reapplicant

An applicant that applied to the UCAS scheme in the previous cycle.

Sex

As declared by the applicant.

IMD 2015

The Index of Multiple Deprivation for 2015 identifies small area concentrations of multiple deprivation across all of England, providing a relative measure of deprivation amongst small areas (data zones). When reporting by IMD 2015, the IMD 2015 is used to group areas in each year in the times series.

NIMDM 2017

The Northern Ireland Multiple Deprivation Measure for 2017 identifies small area concentrations of multiple deprivation across all of Northern Ireland, providing a relative measure of deprivation amongst small areas (data zones). When reporting by NIMDM 2017, the NIMDM 2017 is used to group areas in each year in the times series.

SIMD 2012

The Scottish Index of Multiple Deprivation for 2012 identifies small area concentrations of multiple deprivation across all of Scotland, providing a relative measure of deprivation among small areas (data zones). When reporting by SIMD 2012, the SIMD 2012 is used to group areas in each year in the times series.

SIMD 2016

The Scottish Index of Multiple Deprivation for 2016 identifies small area concentrations of multiple deprivation across all of Scotland, providing a relative measure of deprivation among small areas (data zones). When reporting by SIMD 2016, the SIMD 2016 is used to group areas in each year in the times series.

SIMD 2012/2016

Combination of the SIMD measures created in 2012 and 2016. SIMD 2012 is applied to all years before 2017, and SIMD 2016 is applied to years 2017 and onwards.

WIMD 2014

The Welsh Index of Multiple Deprivation identifies small area concentrations of multiple deprivation across all of Wales, providing a relative measure of deprivation among small areas (data zones). In this report, the WIMD 2014 has been used to group areas in each year in the times series.

POLAR4

Developed by HEFCE and classifies small areas across the UK into five groups, according to their level of young participation in HE. Each of these groups represents around 20 per cent of young people, and is ranked from quintile 1 (areas with the lowest young participation rates, considered as the most disadvantaged) to quintile 5 (highest young participation rates, considered most advantaged).

Tariff Group of provider

Providers are grouped as higher, medium or lower tariff based on their average levels of attainment of their accepted applicants (summarised through UCAS Tariff points) in recent cycles. Each group of providers accounted for around a third of all UK 18 year old acceptances in recent cycles.

Subject group

The JACS3 classification used to classify courses into subject groups. With the introduction of HECoS for the 2019 cycle, new courses that were classified using HECoS instead of JACS have been allocated modelled JACS3 values.

Subject group (HECoS)

The CAH classification used to categorise HECoS course subject codes into subject groups. A course may be associated with up to 5 individual subject codes and their respective percentage weight. For this analysis, application totals for subject groups have been calculated by apportioning course applications as weighted by subject group.