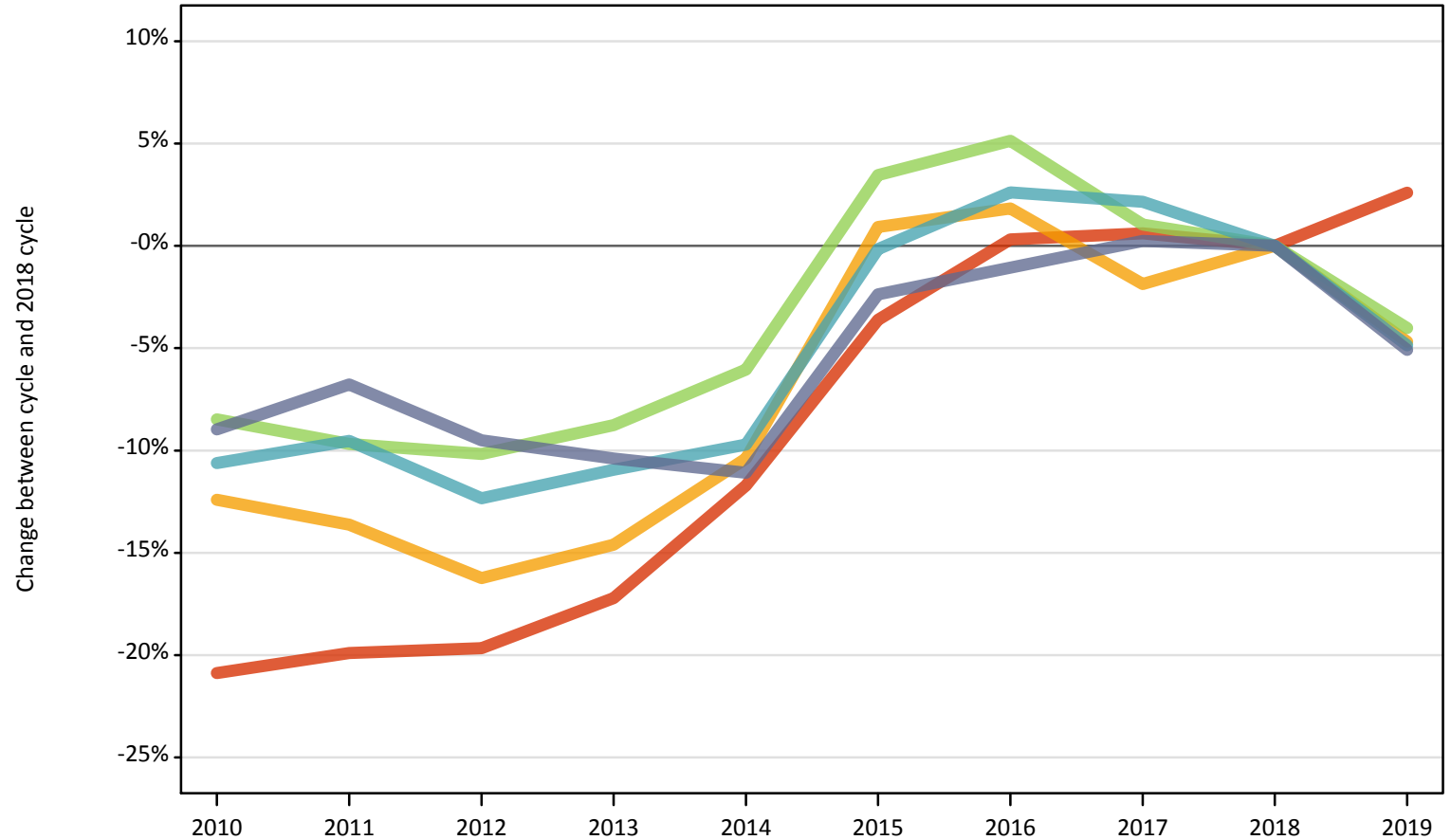


# June Deadline Analysis: SIMD 2012/2016 quintile

## Applicants by SIMD 2012/2016 quintile, age and sex at the 30 June deadline

### I.13.1 Applicants by SIMD 2012/2016 quintile: Scottish domiciled applicants Difference between cycle and 2018 cycle

- Quintile 1
- Quintile 2
- Quintile 3
- Quintile 4
- Quintile 5

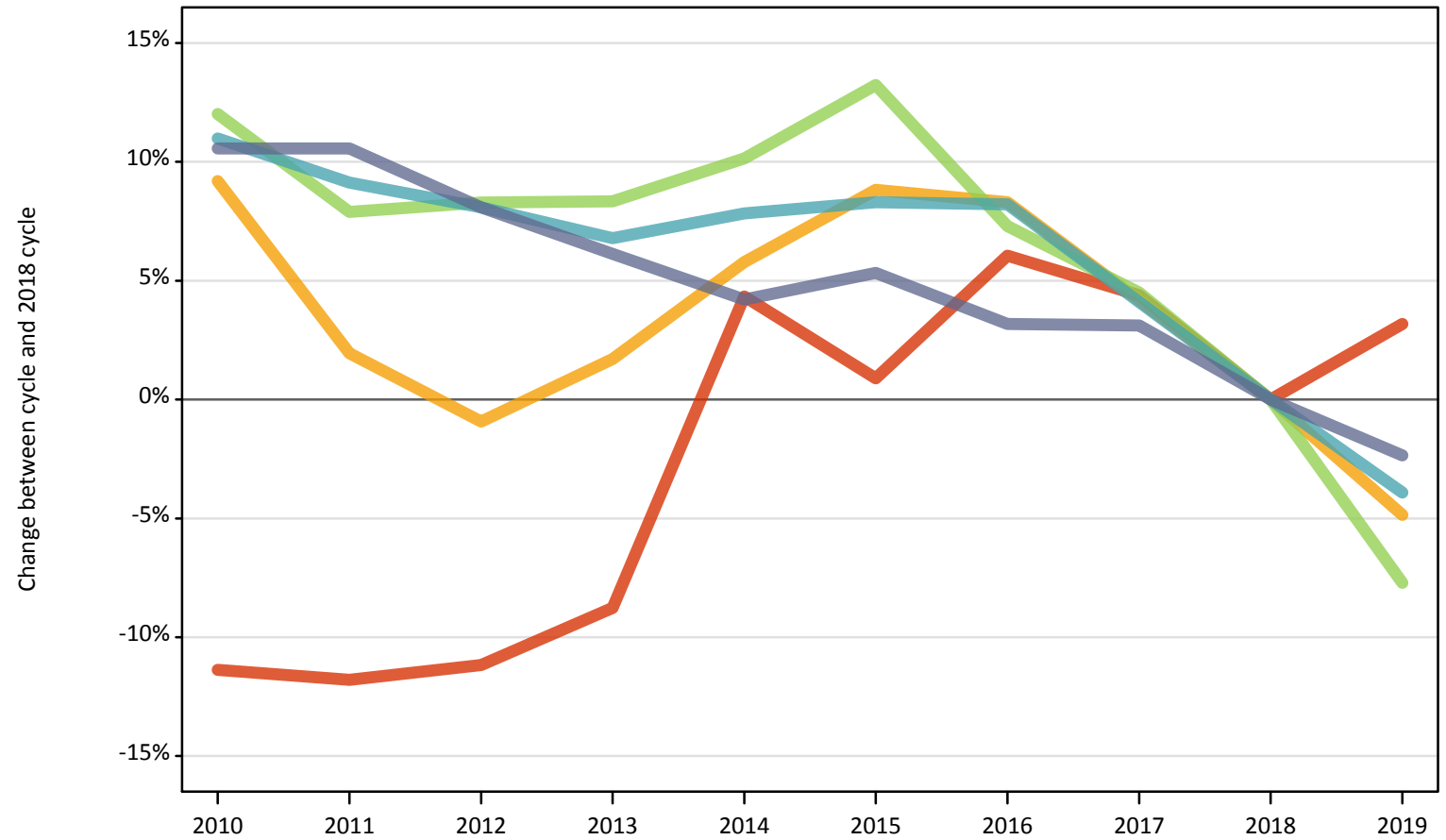


Note: The percentage change is not plotted in the above chart for groups with fewer than 500 applicants in any one cycle.

### I.13.2 18 year old applicants by SIMD 2012/2016 quintile: Scottish domiciled applicants

Difference between cycle and 2018 cycle

- Quintile 1
- Quintile 2
- Quintile 3
- Quintile 4
- Quintile 5



Note: The percentage change is not plotted in the above chart for groups with fewer than 500 applicants in any one cycle.

### I.13.3 Applicants by age and SIMD 2012/2016 quintile: Scottish domiciled applicants

Age group and SIMD 2012/2016 quintile		2010	2011	2012	2013	2014	2015	2016	2017	2018	2019
Under 18	Quintile 1	90	70	70	70	60	80	80	90	70	110
	Quintile 2	130	120	90	80	100	110	90	110	120	100
	Quintile 3	210	170	170	160	160	160	170	170	150	150
	Quintile 4	240	270	230	160	180	170	220	200	200	200
	Quintile 5	310	290	240	220	190	210	230	240	240	230
18	Quintile 1	1,700	1,690	1,700	1,750	2,000	1,930	2,030	2,000	1,920	1,980
	Quintile 2	2,700	2,520	2,450	2,510	2,610	2,690	2,680	2,570	2,470	2,350
	Quintile 3	3,730	3,600	3,610	3,610	3,670	3,770	3,580	3,480	3,330	3,080
	Quintile 4	4,900	4,820	4,780	4,720	4,770	4,790	4,780	4,600	4,420	4,250
	Quintile 5	6,680	6,680	6,530	6,410	6,290	6,360	6,230	6,230	6,040	5,900
19	Quintile 1	560	590	580	580	600	570	590	600	630	610
	Quintile 2	790	820	790	740	710	720	790	750	730	700
	Quintile 3	1,050	1,060	1,070	1,090	1,050	1,110	1,190	1,110	1,120	1,070
	Quintile 4	1,380	1,370	1,420	1,370	1,440	1,520	1,520	1,530	1,500	1,440
	Quintile 5	1,620	1,760	1,800	1,740	1,720	1,800	1,890	1,880	2,060	1,850
20-24	Quintile 1	1,740	1,850	1,810	1,960	1,970	2,230	2,310	2,310	2,290	2,250
	Quintile 2	1,740	1,850	1,900	1,990	2,000	2,300	2,310	2,190	2,260	2,180
	Quintile 3	1,840	1,900	2,000	2,070	2,220	2,450	2,470	2,360	2,410	2,340
	Quintile 4	1,880	2,070	1,920	2,180	2,170	2,510	2,560	2,670	2,580	2,390
	Quintile 5	2,200	2,380	2,310	2,420	2,440	2,780	2,850	2,860	2,880	2,630
25-29	Quintile 1	790	800	830	810	870	1,080	1,100	1,110	1,090	1,130
	Quintile 2	710	690	650	660	800	1,040	1,070	1,000	1,030	940
	Quintile 3	680	670	590	620	640	880	980	900	900	890
	Quintile 4	550	530	510	570	560	800	870	880	890	840
	Quintile 5	550	600	500	510	550	870	900	920	840	830
30-34	Quintile 1	460	500	480	490	510	650	660	670	680	710
	Quintile 2	380	410	350	370	430	490	510	500	570	550
	Quintile 3	320	340	310	340	350	440	510	470	470	480
	Quintile 4	250	250	230	230	250	370	400	430	410	410
	Quintile 5	210	220	210	220	190	320	320	400	380	350

Age group and SIMD 2012/2016 quintile		2010	2011	2012	2013	2014	2015	2016	2017	2018	2019
35 and over	Quintile 1	640	560	610	590	670	760	820	830	890	980
	Quintile 2	540	490	440	460	500	690	670	700	780	780
	Quintile 3	510	500	430	430	470	620	690	710	740	740
	Quintile 4	430	430	350	360	370	580	700	680	770	710
	Quintile 5	430	360	330	280	330	520	610	670	750	730
All ages	Quintile 1	5,990	6,060	6,080	6,260	6,680	7,290	7,590	7,610	7,560	7,760
	Quintile 2	6,980	6,890	6,680	6,810	7,140	8,040	8,120	7,820	7,970	7,600
	Quintile 3	8,340	8,230	8,190	8,310	8,560	9,430	9,580	9,210	9,110	8,750
	Quintile 4	9,620	9,740	9,440	9,590	9,720	10,750	11,040	11,000	10,760	10,240
	Quintile 5	12,000	12,290	11,930	11,810	11,720	12,870	13,040	13,210	13,180	12,510

### I.13.4 Applicants by age and SIMD 2012/2016 quintile: Scottish domiciled applicants

Difference between cycle and 2018 cycle

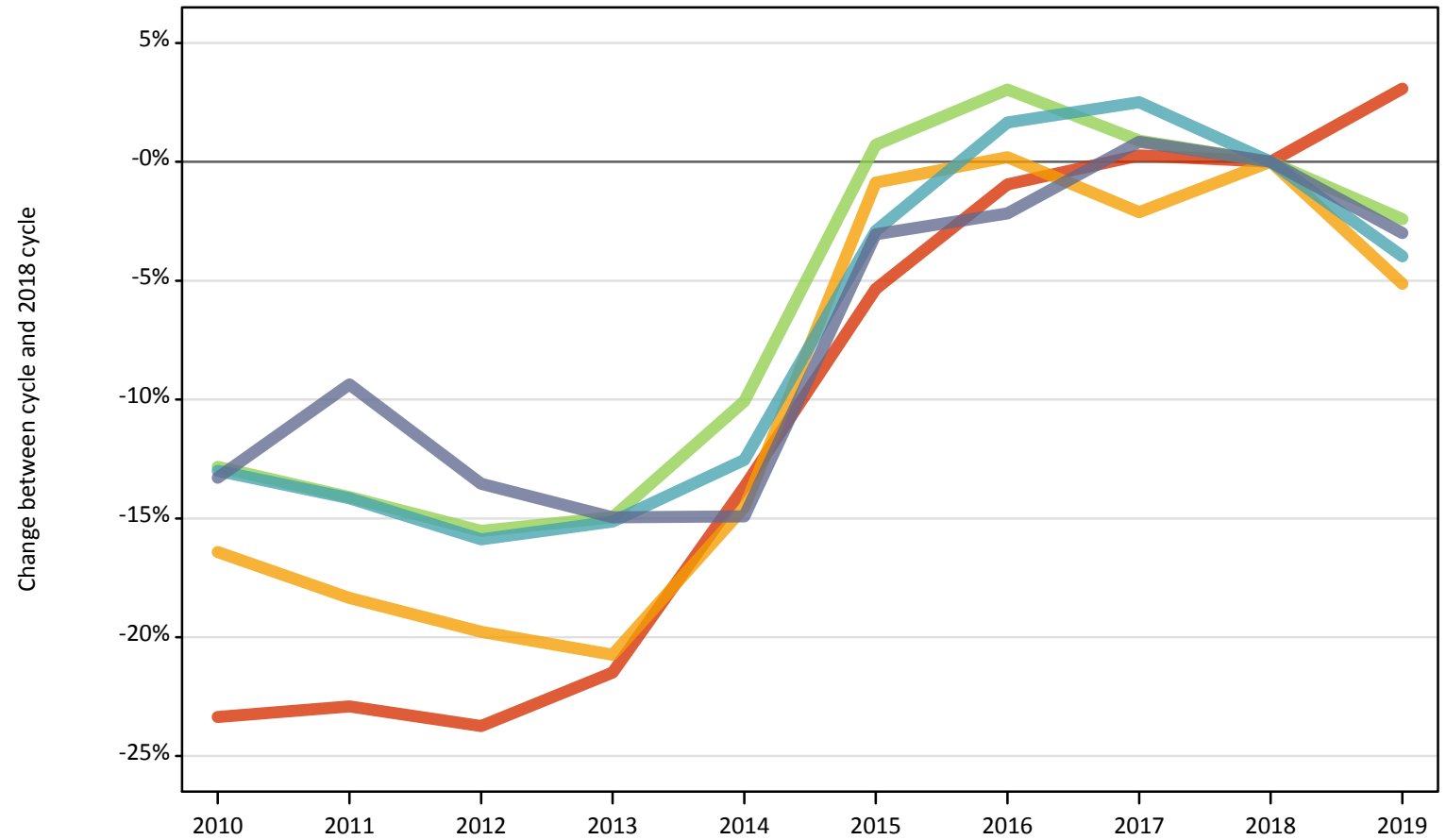
Age group and SIMD 2012/2016 quintile		2010	2011	2012	2013	2014	2015	2016	2017	2018	2019
Under 18	Quintile 1	23%	-3%	-1%	0%	-19%	4%	8%	18%	0%	53%
	Quintile 2	7%	-6%	-24%	-39%	-23%	-11%	-28%	-10%	0%	-19%
	Quintile 3	42%	16%	14%	9%	5%	7%	12%	13%	0%	1%
	Quintile 4	23%	38%	16%	-22%	-10%	-15%	9%	2%	0%	2%
	Quintile 5	29%	23%	2%	-7%	-19%	-10%	-3%	0%	0%	-2%
18	Quintile 1	-11%	-12%	-11%	-9%	4%	1%	6%	4%	0%	3%
	Quintile 2	9%	2%	-1%	2%	6%	9%	8%	4%	0%	-5%
	Quintile 3	12%	8%	8%	8%	10%	13%	7%	5%	0%	-8%
	Quintile 4	11%	9%	8%	7%	8%	8%	8%	4%	0%	-4%
	Quintile 5	11%	11%	8%	6%	4%	5%	3%	3%	0%	-2%
19	Quintile 1	-10%	-5%	-8%	-7%	-4%	-9%	-5%	-3%	0%	-3%
	Quintile 2	8%	12%	8%	1%	-4%	-1%	8%	3%	0%	-4%
	Quintile 3	-6%	-5%	-4%	-3%	-6%	-1%	6%	-1%	0%	-4%
	Quintile 4	-8%	-9%	-5%	-9%	-4%	2%	1%	2%	0%	-4%
	Quintile 5	-21%	-15%	-13%	-15%	-16%	-13%	-8%	-8%	0%	-10%
20-24	Quintile 1	-24%	-19%	-21%	-14%	-14%	-3%	1%	1%	0%	-2%
	Quintile 2	-23%	-18%	-16%	-12%	-11%	2%	2%	-3%	0%	-3%
	Quintile 3	-23%	-21%	-17%	-14%	-8%	2%	3%	-2%	0%	-3%
	Quintile 4	-27%	-20%	-26%	-15%	-16%	-3%	-1%	4%	0%	-7%
	Quintile 5	-24%	-17%	-20%	-16%	-15%	-3%	-1%	-1%	0%	-9%
25-29	Quintile 1	-27%	-27%	-24%	-25%	-20%	-1%	1%	2%	0%	3%
	Quintile 2	-31%	-33%	-37%	-36%	-22%	1%	4%	-3%	0%	-9%
	Quintile 3	-25%	-26%	-34%	-32%	-29%	-2%	9%	0%	0%	-1%
	Quintile 4	-39%	-41%	-43%	-36%	-37%	-10%	-2%	-1%	0%	-6%
	Quintile 5	-34%	-29%	-40%	-39%	-35%	4%	8%	10%	0%	-1%
30-34	Quintile 1	-31%	-26%	-29%	-27%	-25%	-4%	-2%	-1%	0%	5%
	Quintile 2	-34%	-29%	-38%	-36%	-25%	-15%	-11%	-14%	0%	-4%
	Quintile 3	-31%	-28%	-33%	-28%	-25%	-6%	10%	1%	0%	2%
	Quintile 4	-40%	-38%	-44%	-44%	-40%	-9%	-2%	5%	0%	-1%
	Quintile 5	-45%	-42%	-44%	-43%	-50%	-15%	-16%	5%	0%	-9%

Age group and SIMD 2012/2016 quintile		2010	2011	2012	2013	2014	2015	2016	2017	2018	2019
35 and over	Quintile 1	-29%	-37%	-32%	-34%	-25%	-16%	-9%	-7%	0%	10%
	Quintile 2	-32%	-37%	-44%	-41%	-37%	-12%	-15%	-11%	0%	-1%
	Quintile 3	-32%	-33%	-41%	-42%	-36%	-17%	-7%	-4%	0%	-0%
	Quintile 4	-45%	-45%	-54%	-53%	-52%	-24%	-10%	-12%	0%	-7%
	Quintile 5	-42%	-52%	-55%	-62%	-56%	-30%	-18%	-10%	0%	-3%
All ages	Quintile 1	-21%	-20%	-20%	-17%	-12%	-4%	0%	1%	0%	3%
	Quintile 2	-12%	-14%	-16%	-15%	-10%	1%	2%	-2%	0%	-5%
	Quintile 3	-8%	-10%	-10%	-9%	-6%	3%	5%	1%	0%	-4%
	Quintile 4	-11%	-10%	-12%	-11%	-10%	-0%	3%	2%	0%	-5%
	Quintile 5	-9%	-7%	-9%	-10%	-11%	-2%	-1%	0%	0%	-5%

Note: The percentage change is not recorded in the above table for groups with fewer than 10 applicants in that cycle or in the 2018 cycle.

**I.13.5 Applicants by SIMD 2012/2016 quintile: Scottish domiciled applicants (Women)**  
Difference between cycle and 2018 cycle

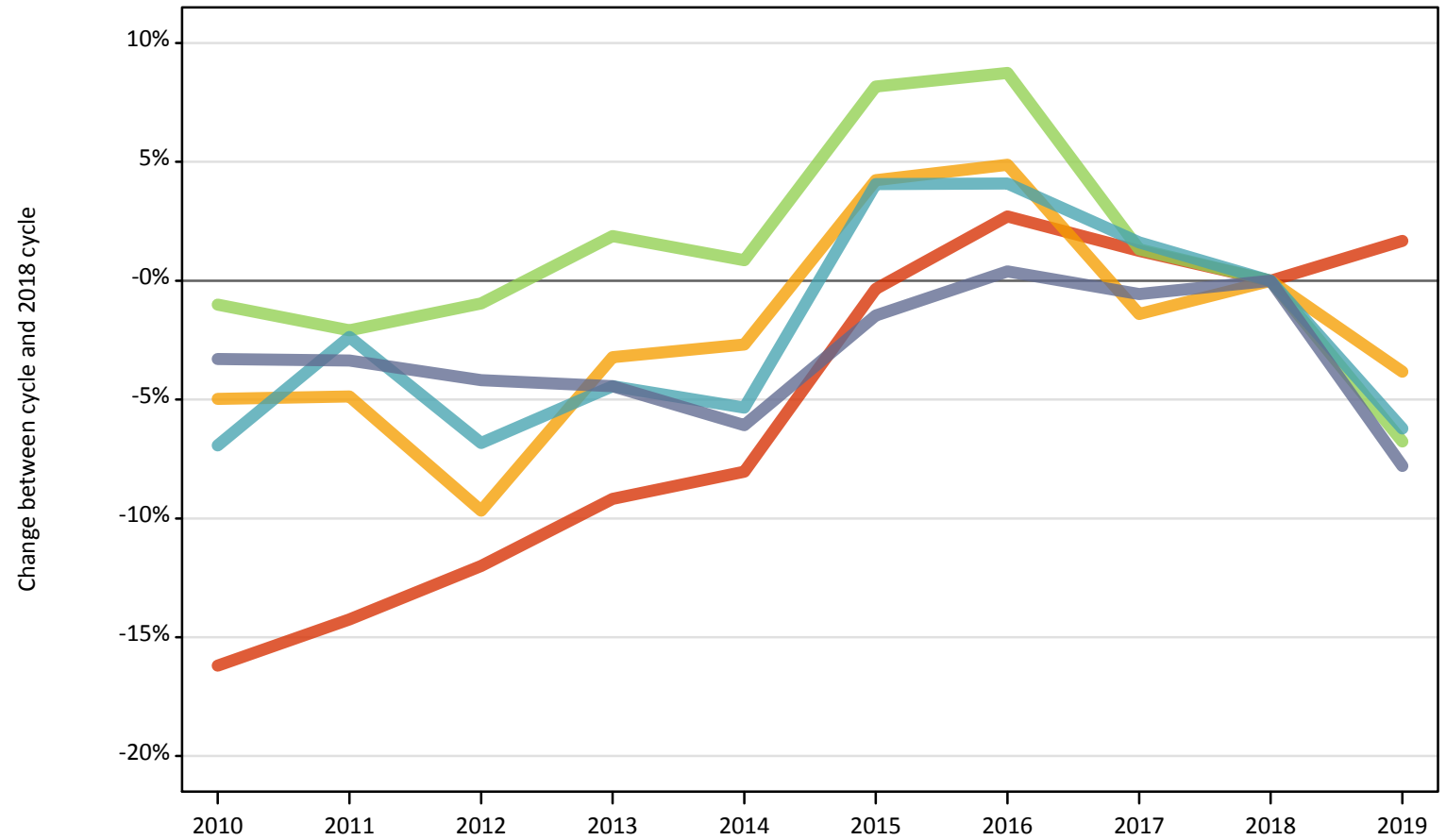
- Quintile 1
- Quintile 2
- Quintile 3
- Quintile 4
- Quintile 5



Note: The percentage change is not plotted in the above chart for groups with fewer than 500 applicants in any one cycle.

**I.13.6 Applicants by SIMD 2012/2016 quintile: Scottish domiciled applicants (Men)**  
Difference between cycle and 2018 cycle

- Quintile 1
- Quintile 2
- Quintile 3
- Quintile 4
- Quintile 5



Note: The percentage change is not plotted in the above chart for groups with fewer than 500 applicants in any one cycle.



### I.13.7 Applicants by sex and SIMD 2012/2016 quintile: Scottish domiciled applicants

Sex and SIMD 2012/2016 quintile		2010	2011	2012	2013	2014	2015	2016	2017	2018	2019
Women	Quintile 1	3,790	3,810	3,770	3,880	4,260	4,670	4,890	4,950	4,940	5,090
	Quintile 2	4,330	4,230	4,160	4,110	4,430	5,130	5,190	5,070	5,180	4,910
	Quintile 3	5,020	4,950	4,860	4,900	5,180	5,800	5,930	5,810	5,760	5,620
	Quintile 4	5,680	5,610	5,500	5,540	5,710	6,340	6,640	6,700	6,530	6,270
	Quintile 5	6,480	6,770	6,460	6,350	6,360	7,240	7,310	7,530	7,470	7,250
Men	Quintile 1	2,200	2,250	2,310	2,380	2,410	2,620	2,700	2,660	2,630	2,670
	Quintile 2	2,650	2,660	2,520	2,700	2,720	2,910	2,930	2,750	2,790	2,690
	Quintile 3	3,320	3,280	3,320	3,420	3,380	3,630	3,650	3,400	3,350	3,130
	Quintile 4	3,940	4,130	3,940	4,040	4,000	4,400	4,400	4,300	4,230	3,970
	Quintile 5	5,520	5,510	5,470	5,450	5,360	5,620	5,730	5,670	5,710	5,260

### I.13.8 Applicants by sex and SIMD 2012/2016 quintile: Scottish domiciled applicants

Difference between cycle and 2018 cycle

Sex and SIMD 2012/2016 quintile		2010	2011	2012	2013	2014	2015	2016	2017	2018	2019
Women	Quintile 1	-23%	-23%	-24%	-21%	-14%	-5%	-1%	0%	0%	3%
	Quintile 2	-16%	-18%	-20%	-21%	-15%	-1%	0%	-2%	0%	-5%
	Quintile 3	-13%	-14%	-16%	-15%	-10%	1%	3%	1%	0%	-2%
	Quintile 4	-13%	-14%	-16%	-15%	-13%	-3%	2%	3%	0%	-4%
	Quintile 5	-13%	-9%	-14%	-15%	-15%	-3%	-2%	1%	0%	-3%
Men	Quintile 1	-16%	-14%	-12%	-9%	-8%	-0%	3%	1%	0%	2%
	Quintile 2	-5%	-5%	-10%	-3%	-3%	4%	5%	-1%	0%	-4%
	Quintile 3	-1%	-2%	-1%	2%	1%	8%	9%	1%	0%	-7%
	Quintile 4	-7%	-2%	-7%	-4%	-5%	4%	4%	2%	0%	-6%
	Quintile 5	-3%	-3%	-4%	-4%	-6%	-1%	0%	-1%	0%	-8%

Note: The percentage change is not recorded in the above table for groups with fewer than 10 applicants in that cycle or in the 2018 cycle.

### I.13.9 Technical notes and definitions

Applicants have been able to submit applications for all 2019 courses since early September.

Applicants who submit their applications to UCAS by the January deadline are considered 'on time' applicants for the large majority of courses offered through UCAS. Some art and design courses have a later deadline of 24 March. By definition all main scheme applications have been received by the 30 June deadline.

Counts of the number of applicants reported have been rounded to the nearest 10 applicants, this may result in instances where totals do not equal the sum of the components. Proportional changes have been rounded to the nearest whole percentage point.

#### Age

This statistical release uses country-specific age definitions which align with the cut off points for school/college cohorts within the different administrations of the UK. For England and Wales ages are defined on the 31 August, for Northern Ireland on the 1 July and for Scotland on the 28 February the following year. Defining ages in this way matches the assignment of children to school cohorts. For applicants outside of the UK the cohort cut off for England and Wales has been used.

#### Applicant

A person who has made an application in the UCAS system during the cycle reported (including applications for deferred entry). Records of prior acceptance (RPAs) are excluded.

#### Application

An application to a course at a provider made by an applicant in the UCAS main scheme. Applicants may make up to five main scheme applications.

#### Country of provider

An applicant may be counted once for each provider country they have applied to in the main scheme. If an applicant has applied to providers in multiple countries then the applicant is counted once within each country of provider applied to.

#### Domicile

Declared area of permanent residence. The Channel Islands and the Isle of Man have been assigned as 'Not EU'.

#### Ethnic group

High level grouping of ethnic origin as declared by the applicant: 'Asian', 'Black', 'Mixed', 'White', 'Other', 'Unknown'.

#### First time applicant

An applicant that did not apply to the UCAS scheme in the previous cycle.

#### Main scheme

The main UCAS application scheme through which up to five providers/courses can be applied to. This opens in September and closes to new applications on 30 June the following year.

#### Reapplicant

An applicant that applied to the UCAS scheme in the previous cycle.

#### Sex

As declared by the applicant.

### IMD 2015

The Index of Multiple Deprivation for 2015 identifies small area concentrations of multiple deprivation across all of England, providing a relative measure of deprivation amongst small areas (data zones). When reporting by IMD 2015, the IMD 2015 is used to group areas in each year in the times series.

### NIMDM 2017

The Northern Ireland Multiple Deprivation Measure for 2017 identifies small area concentrations of multiple deprivation across all of Northern Ireland, providing a relative measure of deprivation amongst small areas (data zones). When reporting by NIMDM 2017, the NIMDM 2017 is used to group areas in each year in the times series.

### SIMD 2012

The Scottish Index of Multiple Deprivation for 2012 identifies small area concentrations of multiple deprivation across all of Scotland, providing a relative measure of deprivation among small areas (data zones). When reporting by SIMD 2012, the SIMD 2012 is used to group areas in each year in the times series.

### SIMD 2016

The Scottish Index of Multiple Deprivation for 2016 identifies small area concentrations of multiple deprivation across all of Scotland, providing a relative measure of deprivation among small areas (data zones). When reporting by SIMD 2016, the SIMD 2016 is used to group areas in each year in the times series.

### SIMD 2012/2016

Combination of the SIMD measures created in 2012 and 2016. SIMD 2012 is applied to all years before 2017, and SIMD 2016 is applied to years 2017 and onwards.

### WIMD 2014

The Welsh Index of Multiple Deprivation identifies small area concentrations of multiple deprivation across all of Wales, providing a relative measure of deprivation among small areas (data zones). In this report, the WIMD 2014 has been used to group areas in each year in the times series.

### POLAR4

Developed by HEFCE and classifies small areas across the UK into five groups, according to their level of young participation in HE. Each of these groups represents around 20 per cent of young people, and is ranked from quintile 1 (areas with the lowest young participation rates, considered as the most disadvantaged) to quintile 5 (highest young participation rates, considered most advantaged).

### Tariff Group of provider

Providers are grouped as higher, medium or lower tariff based on their average levels of attainment of their accepted applicants (summarised through UCAS Tariff points) in recent cycles. Each group of providers accounted for around a third of all UK 18 year old acceptances in recent cycles.

### Subject group

The JACS3 classification used to classify courses into subject groups. With the introduction of HECoS for the 2019 cycle, new courses that were classified using HECoS instead of JACS have been allocated modelled JACS3 values.

### Subject group (HECoS)

The CAH classification used to categorise HECoS course subject codes into subject groups. A course may be associated with up to 5 individual subject codes and their respective percentage weight. For this analysis, application totals for subject groups have been calculated by apportioning course applications as weighted by subject group.