

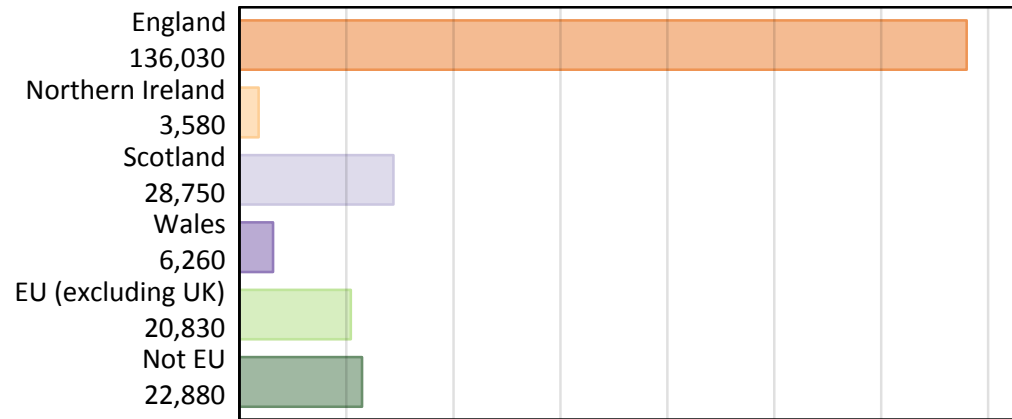
Daily Clearing Analysis: Country

Analysis at 00:05 on Tuesday 6 August 2019 (SQA results day)

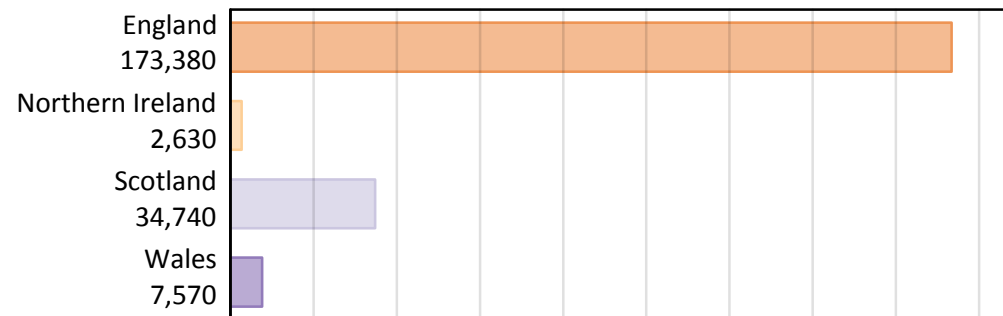
B.1 Placed applicants by country of provider and domicile, 2019 cycle

Domicile of applicant	Country of provider				
	England	Northern Ireland	Scotland	Wales	UK
England	132,190	60	1,160	2,610	136,030
Northern Ireland	1,050	2,270	200	50	3,580
Scotland	850	10	27,880	10	28,750
Wales	2,740	0	30	3,490	6,260
EU (excluding UK)	16,840	110	3,150	730	20,830
Not EU	19,700	180	2,330	670	22,880
All	173,380	2,630	34,740	7,570	218,320

B.2 Placed applicants by domicile group



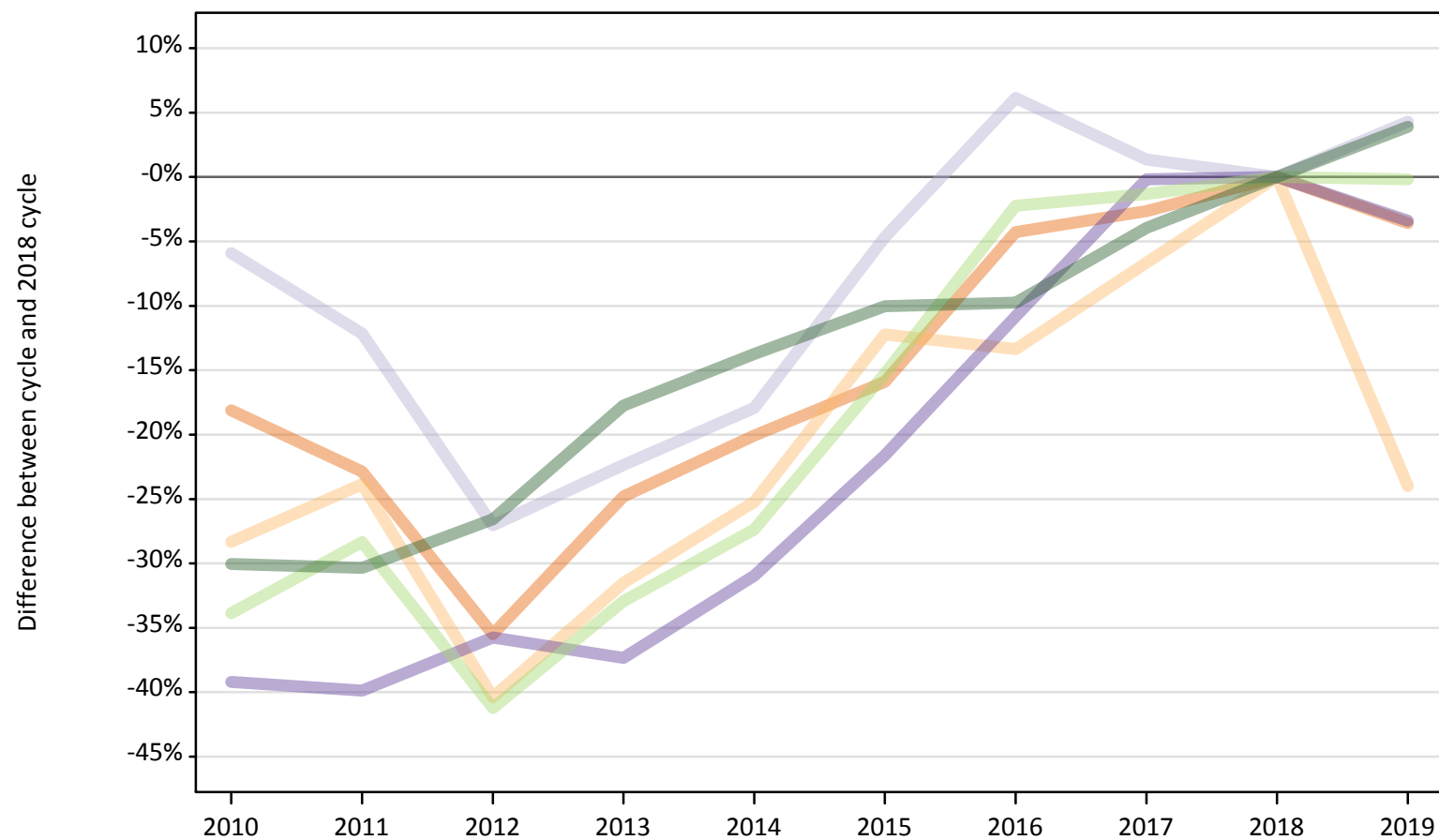
B.3 Placed applicants by country of provider



B.4 Placed applicants at SQA results day: providers in England

Selected applicant domiciles: difference between cycle and 2018 cycle (at SQA results day)

- England
- Northern Ireland
- Scotland
- Wales
- EU (excluding UK)
- Not EU



Note: The percentage change is not plotted in the above chart for groups with fewer than 30 placed applicants in any one cycle.

B.5 Placed applicants at SQA results day: providers in England

Placed applicants by domicile (at SQA results day)

Domicile of applicant	2010	2011	2012	2013	2014	2015	2016	2017	2018	2019
England	112,270	105,760	88,450	103,110	109,600	115,300	131,270	133,490	137,110	132,190
Northern Ireland	990	1,050	830	950	1,040	1,220	1,200	1,290	1,380	1,050
Scotland	770	720	590	630	670	780	860	830	810	850
Wales	1,730	1,710	1,820	1,780	1,960	2,220	2,530	2,830	2,840	2,740
EU (excluding UK)	11,160	12,090	9,920	11,320	12,250	14,300	16,500	16,650	16,870	16,840
Not EU	13,270	13,210	13,930	15,600	16,360	17,060	17,110	18,220	18,970	19,700

B.6 Placed applicants at SQA results day: providers in England

Selected applicant domiciles: difference between cycle and 2018 cycle (at SQA results day)

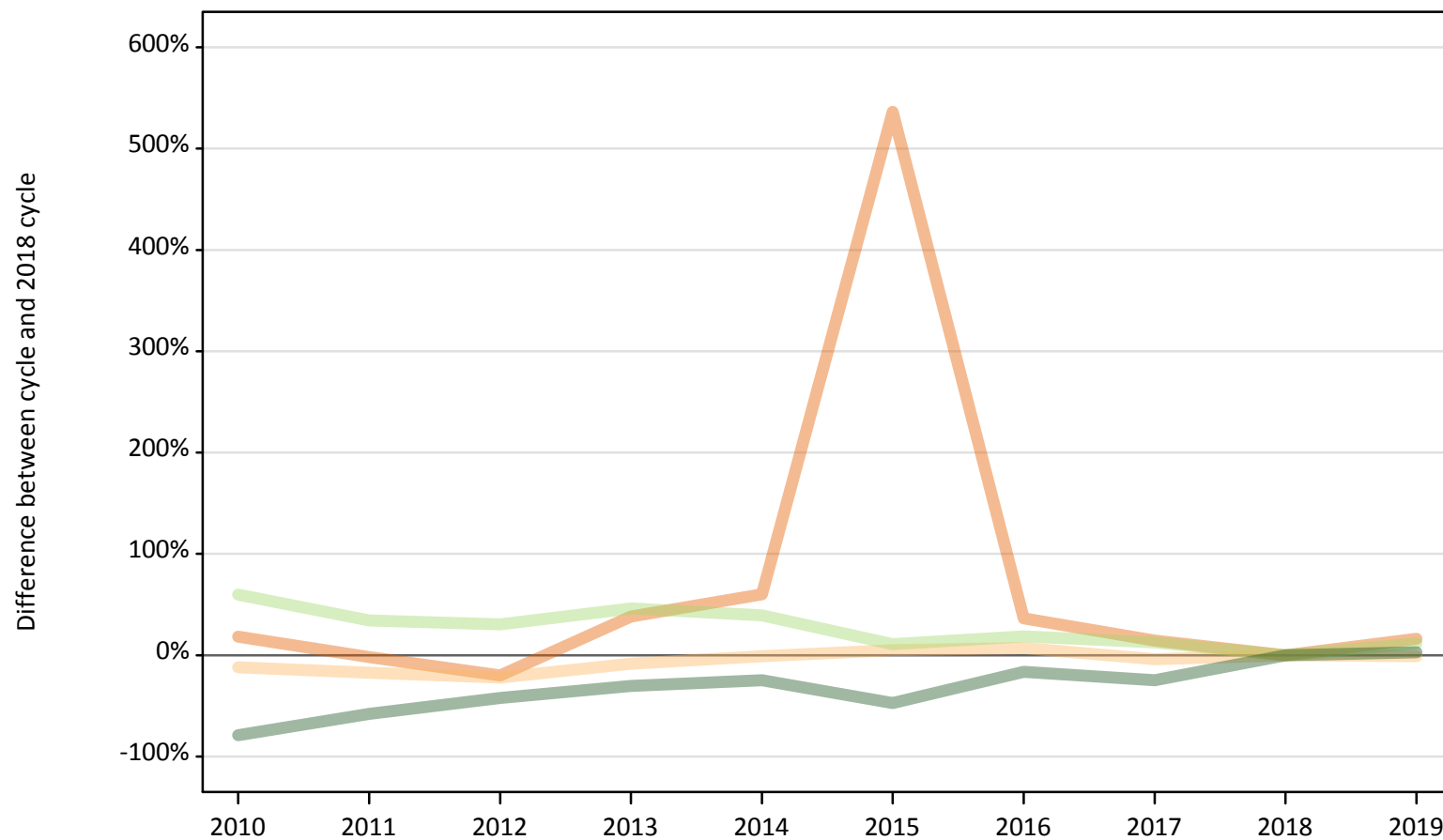
Domicile of applicant	2010	2011	2012	2013	2014	2015	2016	2017	2018	2019
England	-18%	-23%	-35%	-25%	-20%	-16%	-4%	-3%	0%	-4%
Northern Ireland	-28%	-24%	-40%	-32%	-25%	-12%	-13%	-7%	0%	-24%
Scotland	-6%	-12%	-27%	-22%	-18%	-5%	6%	1%	0%	4%
Wales	-39%	-40%	-36%	-37%	-31%	-22%	-11%	-0%	0%	-3%
EU (excluding UK)	-34%	-28%	-41%	-33%	-27%	-15%	-2%	-1%	0%	-0%
Not EU	-30%	-30%	-27%	-18%	-14%	-10%	-10%	-4%	0%	4%

Note: The percentage change is not recorded in the above table for groups with fewer than 10 placed applicants in that cycle or in the 2018 cycle.

B.7 Placed applicants at SQA results day: providers in Northern Ireland

Selected applicant domiciles: difference between cycle and 2018 cycle (at SQA results day)

- England
- Northern Ireland
- Scotland
- Wales
- EU (excluding UK)
- Not EU



Note: The percentage change is not plotted in the above chart for groups with fewer than 30 placed applicants in any one cycle.

B.8 Placed applicants at SQA results day: providers in Northern Ireland

Placed applicants by domicile (at SQA results day)

Domicile of applicant	2010	2011	2012	2013	2014	2015	2016	2017	2018	2019
England	70	50	40	80	90	350	80	60	60	60
Northern Ireland	2,020	1,900	1,790	2,100	2,270	2,400	2,450	2,210	2,290	2,270
Scotland	10	10	20	10	10	10	10	10	20	10
Wales	0	0	0	0	0	0	0	0	0	0
EU (excluding UK)	160	140	130	150	140	110	120	120	100	110
Not EU	40	70	100	120	130	90	140	130	170	180

B.9 Placed applicants at SQA results day: providers in Northern Ireland

Selected applicant domiciles: difference between cycle and 2018 cycle (at SQA results day)

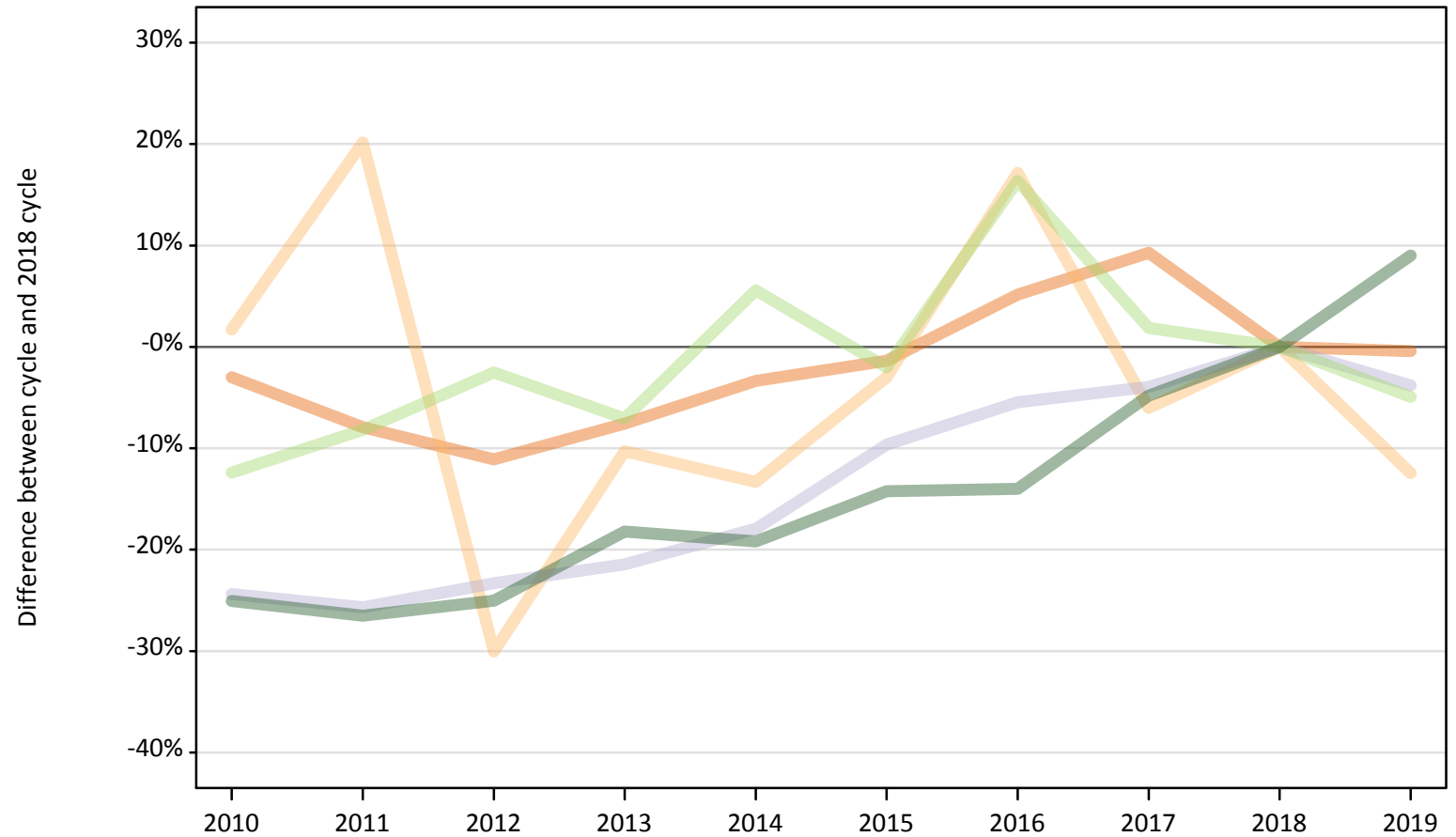
Domicile of applicant	2010	2011	2012	2013	2014	2015	2016	2017	2018	2019
England	18%	-2%	-20%	38%	60%	536%	36%	15%	0%	16%
Northern Ireland	-12%	-17%	-22%	-8%	-1%	5%	7%	-4%	0%	-1%
Scotland	-27%	-33%	13%				-20%	-7%	0%	
Wales										
EU (excluding UK)	60%	34%	30%	46%	39%	11%	19%	13%	0%	12%
Not EU	-79%	-58%	-42%	-30%	-25%	-47%	-16%	-25%	0%	3%

Note: The percentage change is not recorded in the above table for groups with fewer than 10 placed applicants in that cycle or in the 2018 cycle.

B.10 Placed applicants at SQA results day: providers in Scotland

Selected applicant domiciles: difference between cycle and 2018 cycle (at SQA results day)

- England
- Northern Ireland
- Scotland
- Wales
- EU (excluding UK)
- Not EU



Note: The percentage change is not plotted in the above chart for groups with fewer than 30 placed applicants in any one cycle.

B.11 Placed applicants at SQA results day: providers in Scotland

Placed applicants by domicile (at SQA results day)

Domicile of applicant	2010	2011	2012	2013	2014	2015	2016	2017	2018	2019
England	1,130	1,070	1,040	1,080	1,130	1,150	1,220	1,270	1,160	1,160
Northern Ireland	240	280	160	210	200	230	270	220	230	200
Scotland	21,910	21,540	22,220	22,770	23,780	26,180	27,390	27,830	28,970	27,880
Wales	30	30	30	30	30	30	40	30	40	30
EU (excluding UK)	2,900	3,040	3,230	3,080	3,490	3,240	3,850	3,370	3,310	3,150
Not EU	1,600	1,570	1,600	1,750	1,730	1,830	1,840	2,040	2,140	2,330

B.12 Placed applicants at SQA results day: providers in Scotland

Selected applicant domiciles: difference between cycle and 2018 cycle (at SQA results day)

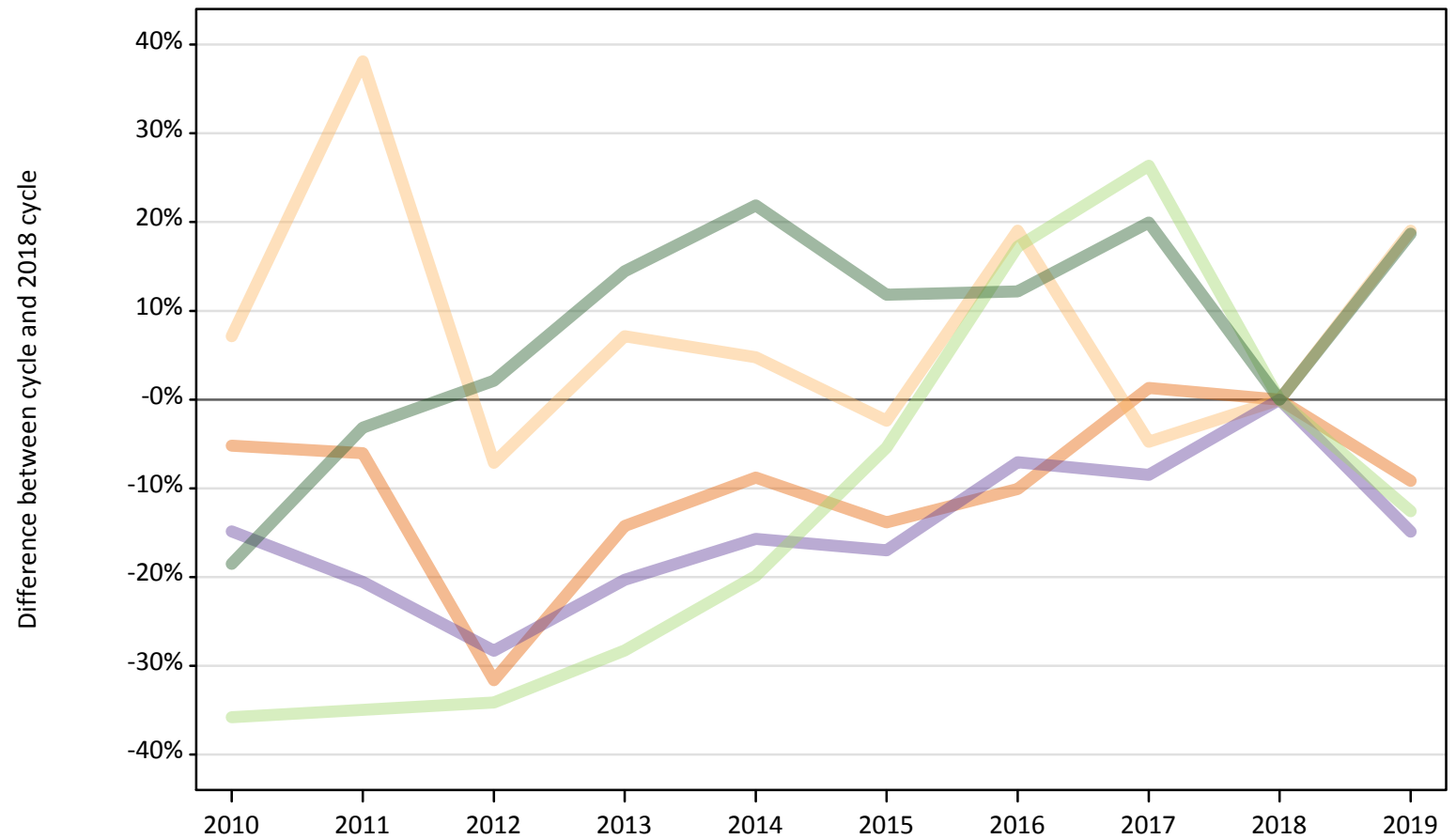
Domicile of applicant	2010	2011	2012	2013	2014	2015	2016	2017	2018	2019
England	-3%	-8%	-11%	-8%	-3%	-1%	5%	9%	0%	-0%
Northern Ireland	2%	20%	-30%	-10%	-13%	-3%	17%	-6%	0%	-12%
Scotland	-24%	-26%	-23%	-21%	-18%	-10%	-5%	-4%	0%	-4%
Wales	-33%	-25%	-33%	-33%	-33%	-33%	3%	-28%	0%	-33%
EU (excluding UK)	-12%	-8%	-3%	-7%	6%	-2%	16%	2%	0%	-5%
Not EU	-25%	-27%	-25%	-18%	-19%	-14%	-14%	-5%	0%	9%

Note: The percentage change is not recorded in the above table for groups with fewer than 10 placed applicants in that cycle or in the 2018 cycle.

B.13 Placed applicants at SQA results day: providers in Wales

Selected applicant domiciles: difference between cycle and 2018 cycle (at SQA results day)

- England
- Northern Ireland
- Scotland
- Wales
- EU (excluding UK)
- Not EU



Note: The percentage change is not plotted in the above chart for groups with fewer than 30 placed applicants in any one cycle.

B.14 Placed applicants at SQA results day: providers in Wales

Placed applicants by domicile (at SQA results day)

Domicile of applicant	2010	2011	2012	2013	2014	2015	2016	2017	2018	2019
England	2,730	2,700	1,970	2,470	2,630	2,480	2,590	2,920	2,880	2,610
Northern Ireland	50	60	40	50	40	40	50	40	40	50
Scotland	30	30	20	30	30	20	30	30	20	10
Wales	3,490	3,260	2,940	3,270	3,460	3,400	3,810	3,750	4,100	3,490
EU (excluding UK)	540	540	550	600	670	790	980	1,060	840	730
Not EU	460	550	580	650	690	630	640	680	570	670

B.15 Placed applicants at SQA results day: providers in Wales

Selected applicant domiciles: difference between cycle and 2018 cycle (at SQA results day)

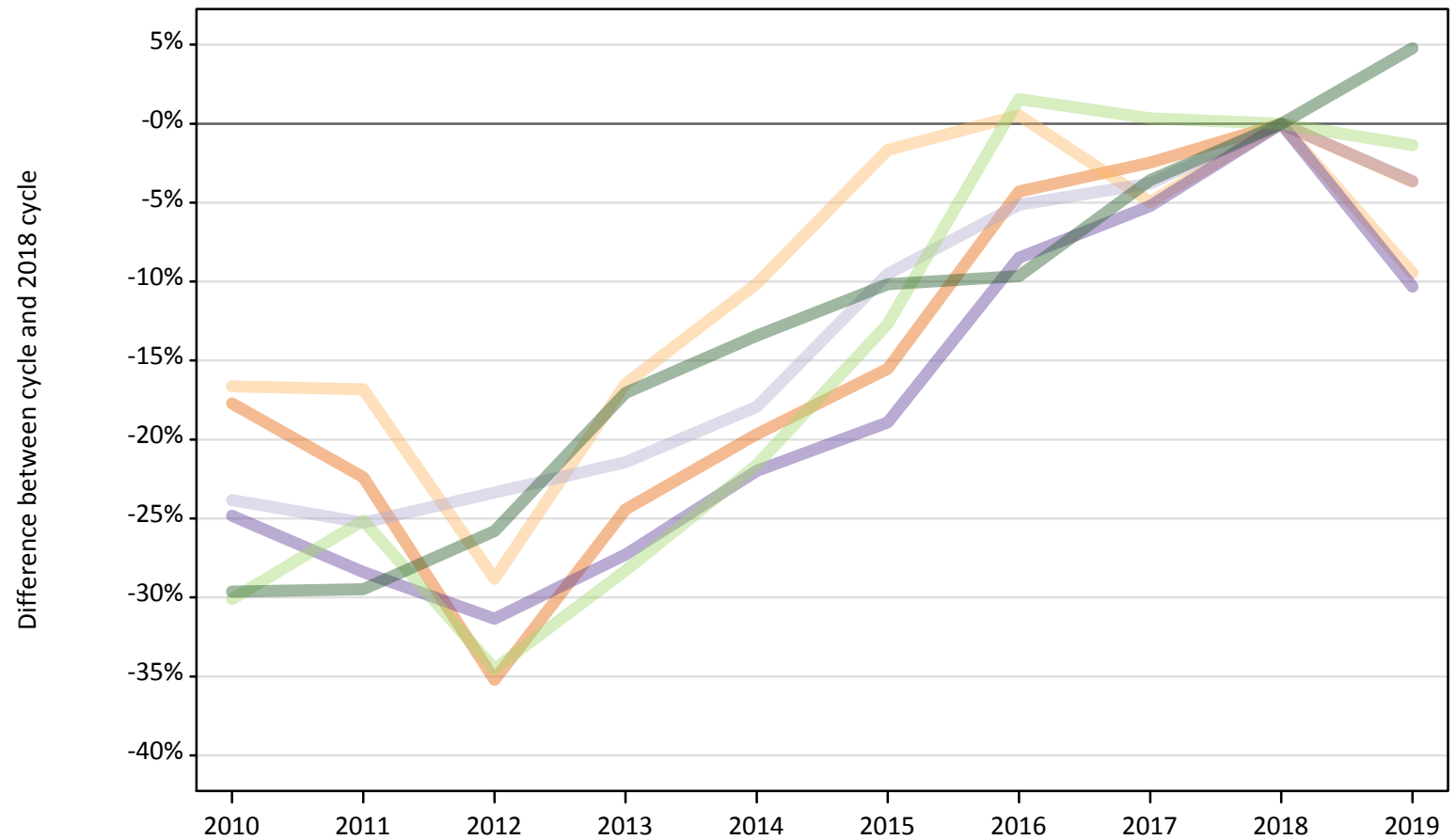
Domicile of applicant	2010	2011	2012	2013	2014	2015	2016	2017	2018	2019
England	-5%	-6%	-32%	-14%	-9%	-14%	-10%	1%	0%	-9%
Northern Ireland	7%	38%	-7%	7%	5%	-2%	19%	-5%	0%	19%
Scotland	25%	25%	-4%	25%	17%	-8%	4%	21%	0%	-42%
Wales	-15%	-21%	-28%	-20%	-16%	-17%	-7%	-8%	0%	-15%
EU (excluding UK)	-36%	-35%	-34%	-28%	-20%	-5%	17%	26%	0%	-13%
Not EU	-19%	-3%	2%	14%	22%	12%	12%	20%	0%	19%

Note: The percentage change is not recorded in the above table for groups with fewer than 10 placed applicants in that cycle or in the 2018 cycle.

B.16 Placed applicants at SQA results day: providers in the UK

Selected applicant domiciles: difference between cycle and 2018 cycle (at SQA results day)

- England
- Northern Ireland
- Scotland
- Wales
- EU (excluding UK)
- Not EU



Note: The percentage change is not plotted in the above chart for groups with fewer than 30 placed applicants in any one cycle.

B.17 Placed applicants at SQA results day: providers in the UK

Placed applicants by domicile (at SQA results day)

Domicile of applicant	2010	2011	2012	2013	2014	2015	2016	2017	2018	2019
England	116,200	109,590	91,490	106,730	113,440	119,280	135,150	137,740	141,210	136,030
Northern Ireland	3,300	3,290	2,810	3,300	3,550	3,890	3,970	3,760	3,950	3,580
Scotland	22,720	22,290	22,860	23,430	24,480	26,990	28,290	28,700	29,830	28,750
Wales	5,240	5,000	4,790	5,070	5,440	5,660	6,380	6,610	6,980	6,260
EU (excluding UK)	14,760	15,810	13,830	15,140	16,560	18,440	21,450	21,190	21,120	20,830
Not EU	15,370	15,400	16,210	18,120	18,910	19,620	19,730	21,060	21,840	22,880

B.18 Placed applicants at SQA results day: providers in the UK

Selected applicant domiciles: difference between cycle and 2018 cycle (at SQA results day)

Domicile of applicant	2010	2011	2012	2013	2014	2015	2016	2017	2018	2019
England	-18%	-22%	-35%	-24%	-20%	-16%	-4%	-2%	0%	-4%
Northern Ireland	-17%	-17%	-29%	-16%	-10%	-2%	1%	-5%	0%	-9%
Scotland	-24%	-25%	-23%	-21%	-18%	-10%	-5%	-4%	0%	-4%
Wales	-25%	-28%	-31%	-27%	-22%	-19%	-9%	-5%	0%	-10%
EU (excluding UK)	-30%	-25%	-35%	-28%	-22%	-13%	2%	0%	0%	-1%
Not EU	-30%	-29%	-26%	-17%	-13%	-10%	-10%	-4%	0%	5%

Note: The percentage change is not recorded in the above table for groups with fewer than 10 placed applicants in that cycle or in the 2018 cycle.