

Analysis at 00:05 on Tuesday 6 August 2019 (SQA results day)

C.1 Placed applicants by country of domicile and age group, 2019 cycle (SQA results day)

Domicile of Applicant	Age group				
	17 and under	18	19	20 to 24	25 and over
England	210	53,160	35,920	29,080	17,650
Northern Ireland	0	550	890	1,500	640
Scotland	430	12,550	3,630	6,580	5,560
Wales	10	2,090	1,660	1,550	950
UK	650	68,340	42,090	38,720	24,800

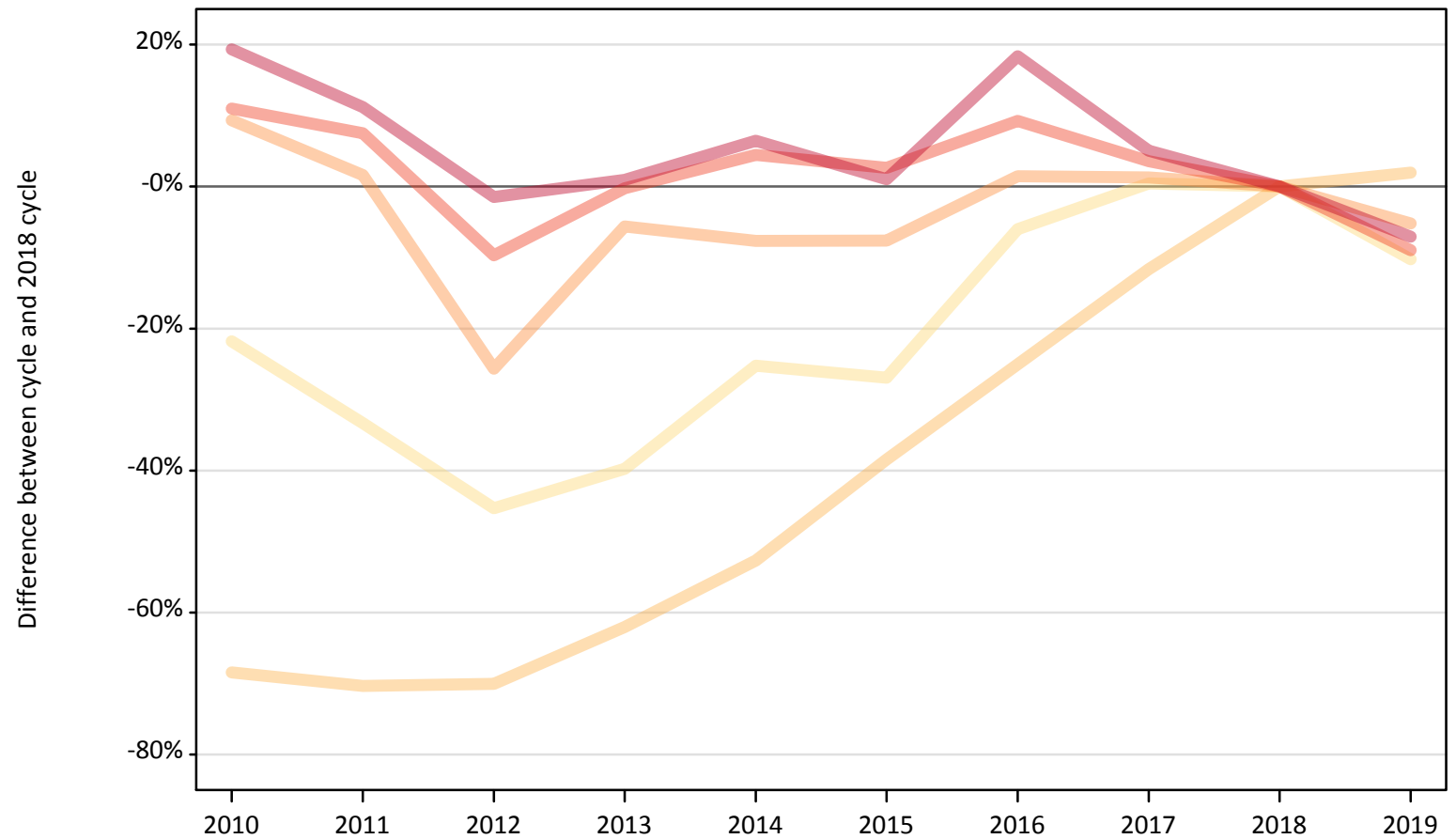
C.2 Proportion of 18 year old population placed by country of domicile, 2019 cycle (SQA results day)

Domicile of Applicant	Age group
	18
England	8.9%
Northern Ireland	2.4%
Scotland	23.3%
Wales	6.2%

C.3 Placed applicants from England by age group at SQA results day

Selected age groups: difference between cycle and 2018 cycle

- 17 and under
- 18
- 19
- 20 to 24
- 25 and over



Note: The percentage change is not plotted in the above chart for groups with fewer than 30 placed applicants in any one cycle.

C.4 Placed applicants from England by age group at SQA results day

All age groups

Domicile of applicant	Age group	2010	2011	2012	2013	2014	2015	2016	2017	2018	2019
England	17 and under	180	160	130	140	180	170	220	240	230	210
	18	16,450	15,450	15,620	19,780	24,680	32,100	39,100	46,080	52,140	53,160
	19	41,430	38,510	28,180	35,760	35,000	35,010	38,450	38,380	37,890	35,920
	20 to 24	35,470	34,350	28,860	31,870	33,370	32,800	34,900	33,090	31,950	29,080
	25 and over	22,660	21,120	18,710	19,170	20,210	19,190	22,480	19,950	18,990	17,650

C.5 Placed applicants from England by age group at SQA results day

Selected age groups: difference between cycle and 2018 cycle

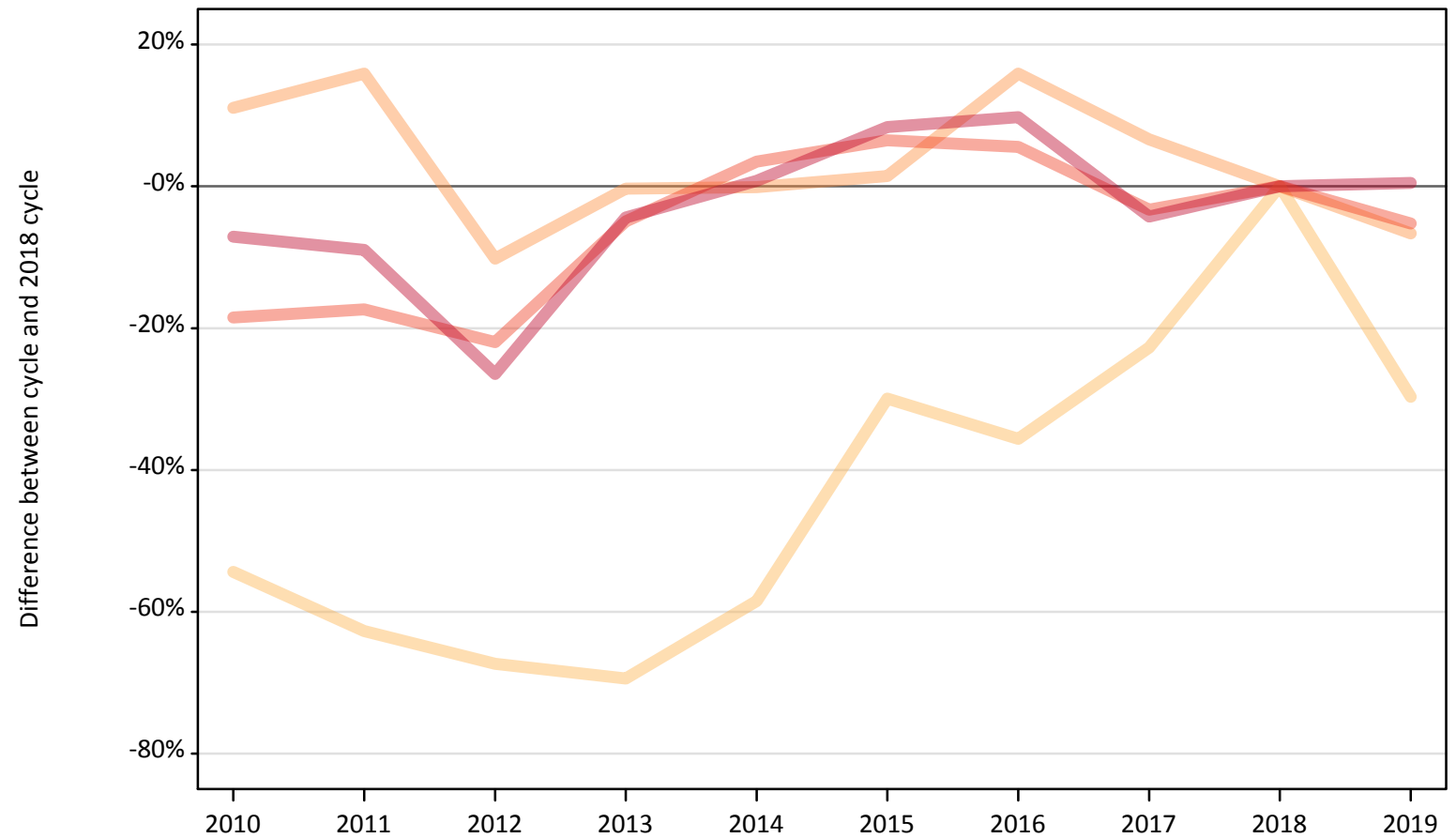
Domicile of applicant	Age group	2010	2011	2012	2013	2014	2015	2016	2017	2018	2019
England	17 and under	-22%	-33%	-45%	-40%	-25%	-27%	-6%	0%	0%	-10%
	18	-68%	-70%	-70%	-62%	-53%	-38%	-25%	-12%	0%	2%
	19	9%	2%	-26%	-6%	-8%	-8%	1%	1%	0%	-5%
	20 to 24	11%	8%	-10%	-0%	4%	3%	9%	4%	0%	-9%
	25 and over	19%	11%	-1%	1%	6%	1%	18%	5%	0%	-7%

Note: The percentage change is not recorded in the above table for groups with fewer than 10 placed applicants in that cycle or in the 2018 cycle.

C.6 Placed applicants from Northern Ireland by age group at SQA results day

Selected age groups: difference between cycle and 2018 cycle

- 17 and under
- 18
- 19
- 20 to 24
- 25 and over



Note: The percentage change is not plotted in the above chart for groups with fewer than 30 placed applicants in any one cycle.

C.7 Placed applicants from Northern Ireland by age group at SQA results day

All age groups

Domicile of applicant	Age group	2010	2011	2012	2013	2014	2015	2016	2017	2018	2019
Northern Ireland	17 and under	0	10	0	0	0	0	0	0	0	0
	18	360	290	250	240	320	550	500	600	780	550
	19	1,060	1,100	850	950	950	960	1,100	1,010	950	890
	20 to 24	1,290	1,310	1,240	1,510	1,640	1,690	1,670	1,530	1,590	1,500
	25 and over	590	580	470	610	640	690	700	610	640	640

C.8 Placed applicants from Northern Ireland by age group at SQA results day

Selected age groups: difference between cycle and 2018 cycle

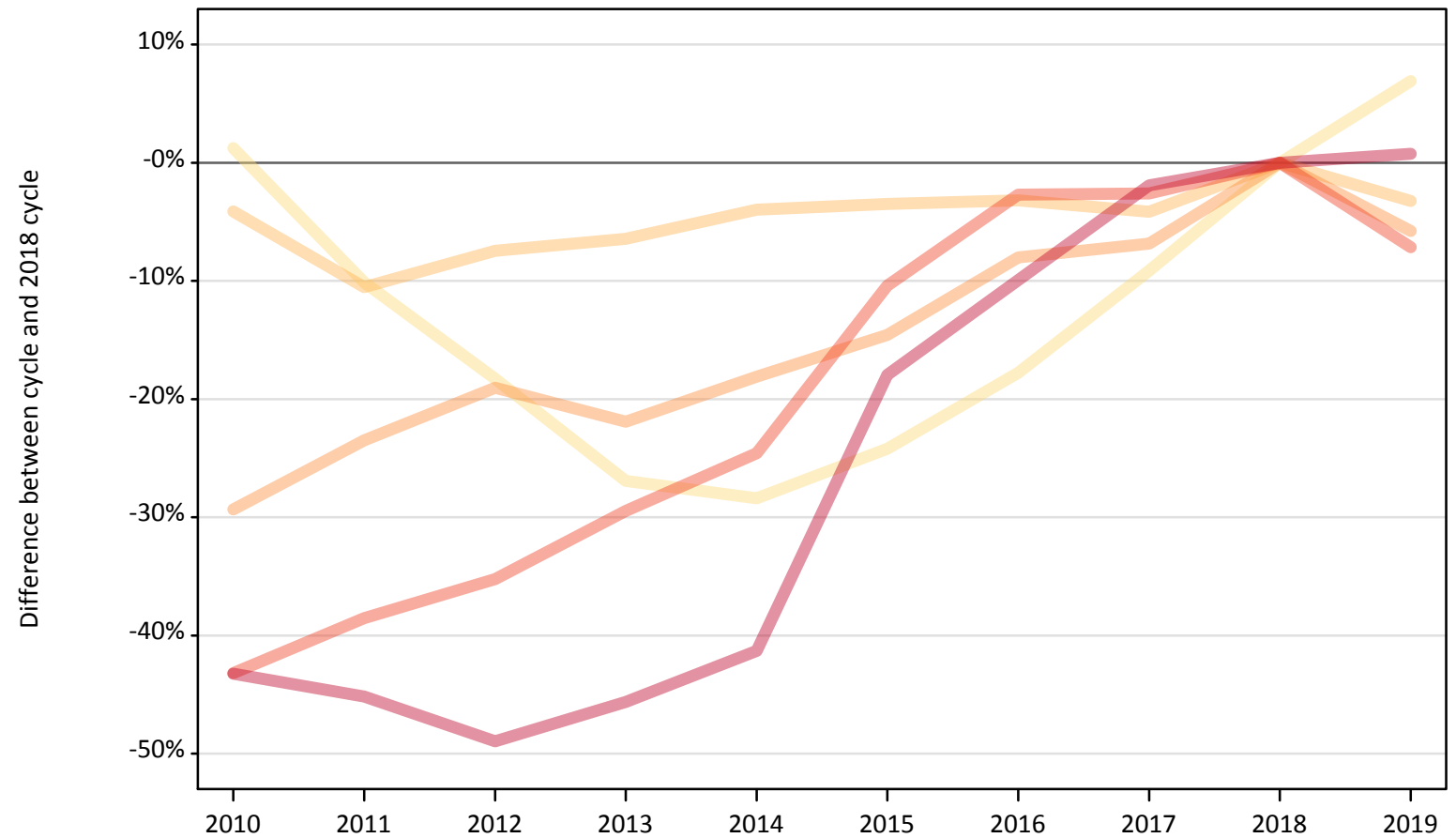
Domicile of applicant	Age group	2010	2011	2012	2013	2014	2015	2016	2017	2018	2019
Northern Ireland	17 and under										
	18	-54%	-63%	-67%	-69%	-58%	-30%	-36%	-23%	0%	-30%
	19	11%	16%	-10%	-0%	-0%	1%	16%	7%	0%	-7%
	20 to 24	-18%	-17%	-22%	-5%	3%	6%	6%	-3%	0%	-5%
	25 and over	-7%	-9%	-26%	-4%	1%	8%	10%	-4%	0%	0%

Note: The percentage change is not recorded in the above table for groups with fewer than 10 placed applicants in that cycle or in the 2018 cycle.

C.9 Placed applicants from Scotland by age group at SQA results day

Selected age groups: difference between cycle and 2018 cycle

- 17 and under
- 18
- 19
- 20 to 24
- 25 and over



Note: The percentage change is not plotted in the above chart for groups with fewer than 30 placed applicants in any one cycle.

C.10 Placed applicants from Scotland by age group at SQA results day

All age groups

Domicile of applicant	Age group	2010	2011	2012	2013	2014	2015	2016	2017	2018	2019
Scotland	17 and under	410	360	330	300	290	310	330	370	410	430
	18	12,430	11,600	12,000	12,130	12,450	12,520	12,550	12,430	12,970	12,550
	19	2,720	2,950	3,120	3,010	3,150	3,290	3,540	3,590	3,850	3,630
	20 to 24	4,030	4,360	4,590	5,000	5,350	6,350	6,900	6,910	7,090	6,580
	25 and over	3,130	3,020	2,820	3,000	3,240	4,520	4,970	5,410	5,510	5,560

C.11 Placed applicants from Scotland by age group at SQA results day

Selected age groups: difference between cycle and 2018 cycle

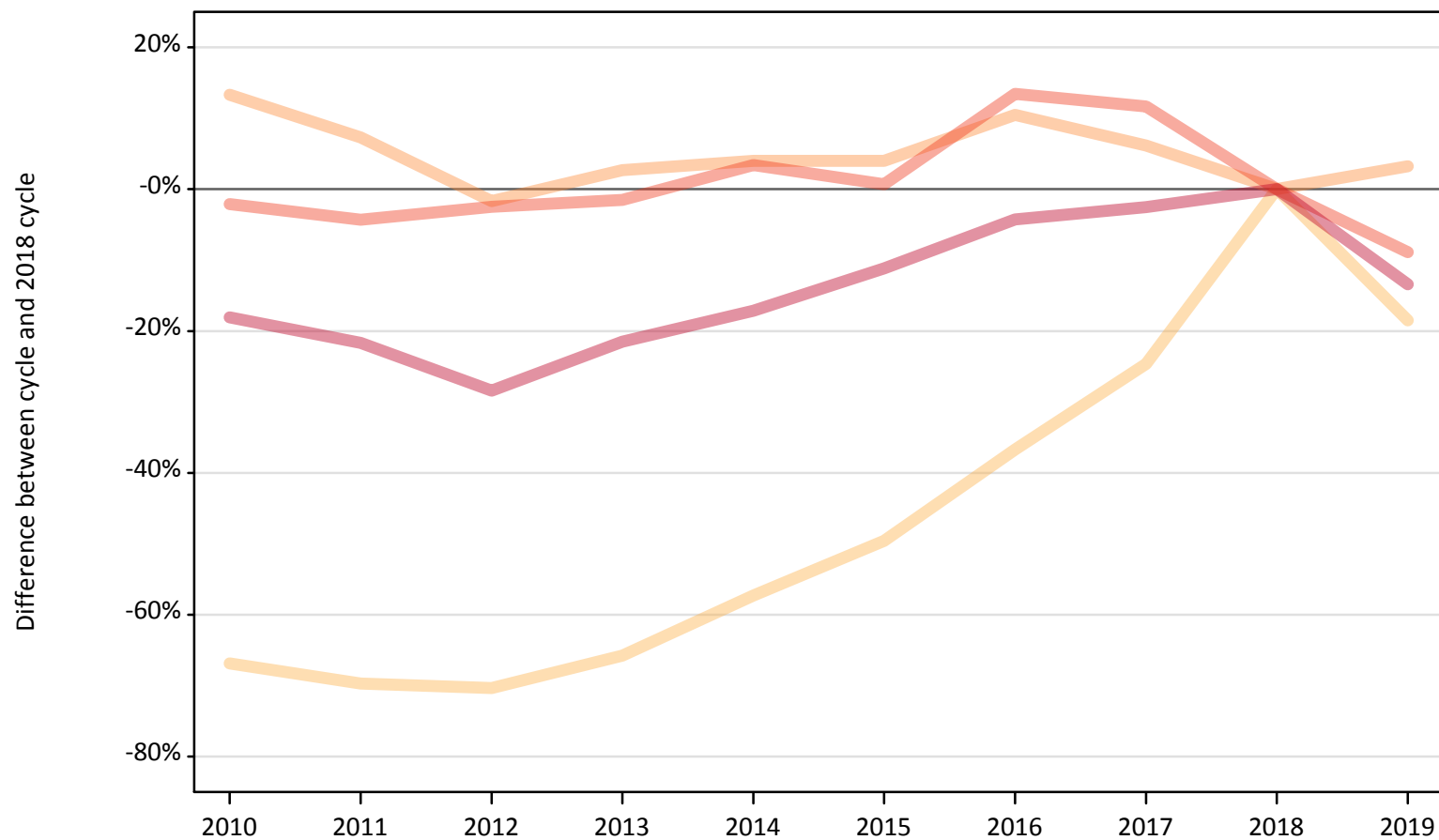
Domicile of applicant	Age group	2010	2011	2012	2013	2014	2015	2016	2017	2018	2019
Scotland	17 and under	1%	-10%	-18%	-27%	-28%	-24%	-18%	-9%	0%	7%
	18	-4%	-11%	-7%	-6%	-4%	-3%	-3%	-4%	0%	-3%
	19	-29%	-23%	-19%	-22%	-18%	-15%	-8%	-7%	0%	-6%
	20 to 24	-43%	-39%	-35%	-29%	-25%	-10%	-3%	-3%	0%	-7%
	25 and over	-43%	-45%	-49%	-46%	-41%	-18%	-10%	-2%	0%	1%

Note: The percentage change is not recorded in the above table for groups with fewer than 10 placed applicants in that cycle or in the 2018 cycle.

C.12 Placed applicants from Wales by age group at SQA results day

Selected age groups: difference between cycle and 2018 cycle

- 17 and under
- 18
- 19
- 20 to 24
- 25 and over



Note: The percentage change is not plotted in the above chart for groups with fewer than 30 placed applicants in any one cycle.

C.13 Placed applicants from Wales by age group at SQA results day

All age groups

Domicile of applicant	Age group	2010	2011	2012	2013	2014	2015	2016	2017	2018	2019
Wales	17 and under	10	10	0	10	10	0	0	0	10	10
	18	850	780	760	880	1,090	1,290	1,620	1,930	2,560	2,090
	19	1,820	1,720	1,580	1,650	1,670	1,670	1,770	1,700	1,610	1,660
	20 to 24	1,670	1,630	1,660	1,680	1,760	1,720	1,930	1,900	1,700	1,550
	25 and over	900	860	790	870	910	980	1,060	1,070	1,100	950

C.14 Placed applicants from Wales by age group at SQA results day

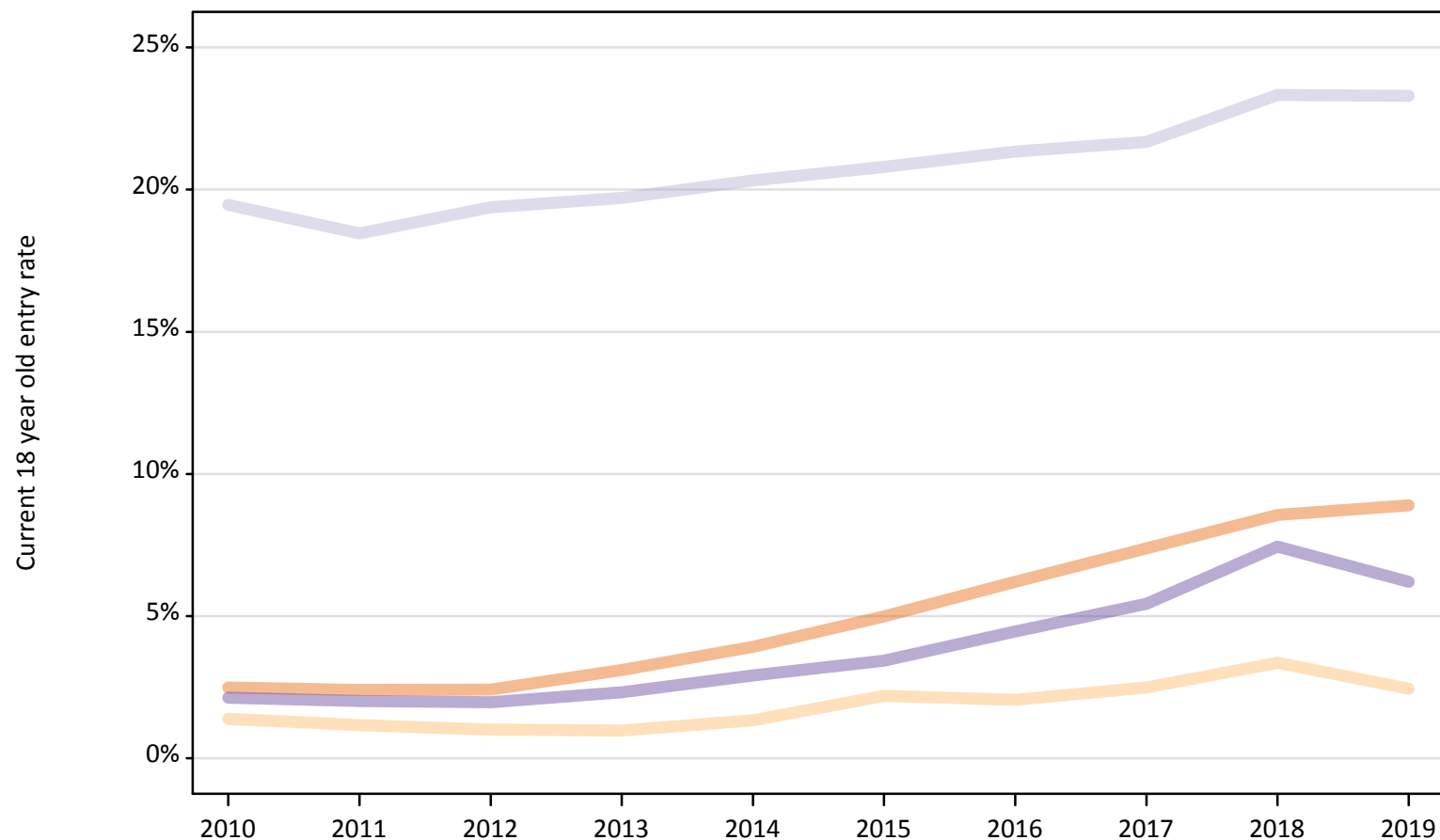
Selected age groups: difference between cycle and 2018 cycle

Domicile of applicant	Age group	2010	2011	2012	2013	2014	2015	2016	2017	2018	2019
Wales	17 and under										
	18	-67%	-70%	-70%	-66%	-57%	-50%	-37%	-25%	0%	-19%
	19	13%	7%	-2%	3%	4%	4%	10%	6%	0%	3%
	20 to 24	-2%	-4%	-2%	-2%	3%	1%	13%	12%	0%	-9%
	25 and over	-18%	-22%	-28%	-22%	-17%	-11%	-4%	-3%	0%	-13%

Note: The percentage change is not recorded in the above table for groups with fewer than 10 placed applicants in that cycle or in the 2018 cycle.

C.15 Entry rates for 18 year olds by UK country of domicile: SQA results day

Placed 18 year old applicants as a proportion of the 18 year old population



C.16 Entry rates for 18 year olds by UK country of domicile: SQA results day

Placed 18 year old applicants as a proportion of the 18 year old population

Domicile of applicant	Age group	2010	2011	2012	2013	2014	2015	2016	2017	2018	2019
England	18	2.5%	2.4%	2.4%	3.1%	3.9%	5.0%	6.2%	7.4%	8.6%	8.9%
Northern Ireland	18	1.4%	1.2%	1.0%	1.0%	1.3%	2.2%	2.0%	2.5%	3.4%	2.4%
Scotland	18	19.5%	18.5%	19.4%	19.7%	20.3%	20.8%	21.3%	21.7%	23.3%	23.3%
Wales	18	2.1%	2.0%	2.0%	2.3%	2.9%	3.4%	4.5%	5.4%	7.4%	6.2%