

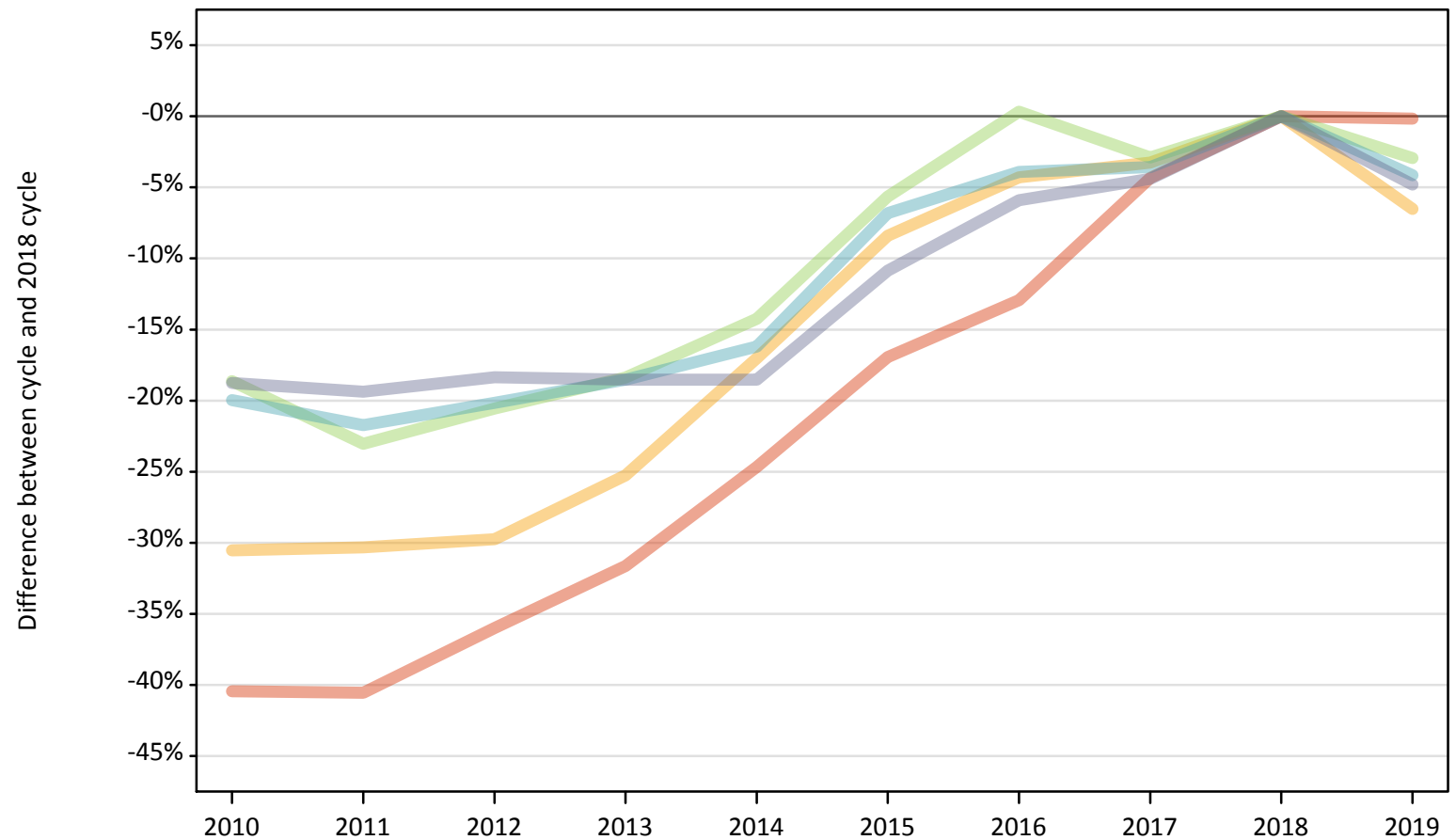
Daily Clearing Analysis: SIMD2012 2016

Analysis at 00:05 on Tuesday 6 August 2019 (SQA results day)

J.1 Placed applicants from Scotland by SIMD2012/2016 quintile: SQA results day

Placed applicants: change relative to 2018 cycle totals

- Quintile 1
- Quintile 2
- Quintile 3
- Quintile 4
- Quintile 5



Note: The percentage change is not plotted in the above chart for groups with fewer than 30 placed applicants in any one cycle.

J.2 Placed applicants from Scotland by SIMD2012/2016 quintile: SQA results day

Applicant Status	SIMD2012/2016	2010	2011	2012	2013	2014	2015	2016	2017	2018	2019
Placed	Quintile 1	2,590	2,580	2,780	2,970	3,270	3,610	3,780	4,150	4,340	4,330
	Quintile 2	3,210	3,220	3,240	3,450	3,830	4,230	4,420	4,470	4,620	4,320
	Quintile 3	4,370	4,140	4,270	4,390	4,610	5,070	5,390	5,220	5,370	5,220
	Quintile 4	5,340	5,220	5,330	5,440	5,590	6,220	6,410	6,430	6,670	6,400
	Quintile 5	7,110	7,050	7,140	7,130	7,130	7,800	8,230	8,360	8,750	8,330

J.3 Placed applicants from Scotland by SIMD2012/2016 quintile: SQA results day

Placed applicants: change relative to 2018 cycle totals

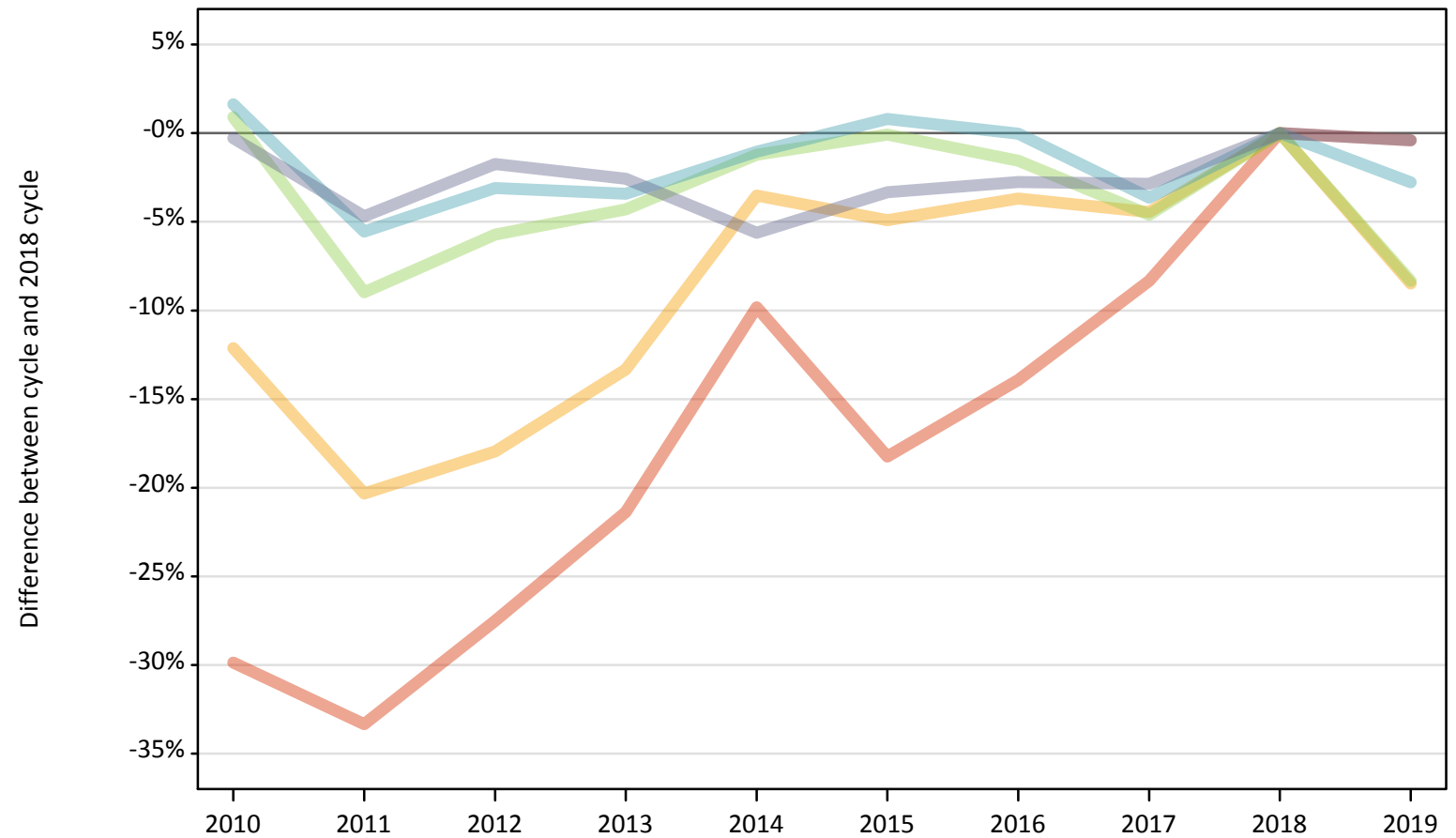
Applicant Status	SIMD2012/2016	2010	2011	2012	2013	2014	2015	2016	2017	2018	2019
Placed	Quintile 1	-40%	-41%	-36%	-32%	-25%	-17%	-13%	-4%	0%	-0%
	Quintile 2	-31%	-30%	-30%	-25%	-17%	-8%	-4%	-3%	0%	-7%
	Quintile 3	-19%	-23%	-21%	-18%	-14%	-6%	0%	-3%	0%	-3%
	Quintile 4	-20%	-22%	-20%	-19%	-16%	-7%	-4%	-4%	0%	-4%
	Quintile 5	-19%	-19%	-18%	-19%	-19%	-11%	-6%	-4%	0%	-5%

Note: The percentage change is not recorded in the above table for groups with fewer than 10 placed applicants in that cycle or in the 2018 cycle.

J.4 Placed 18 year old applicants from Scotland by SIMD2012/2016 quintile: SQA results day

Placed 18 year old applicants: change relative to 2018 cycle totals

- Quintile 1
- Quintile 2
- Quintile 3
- Quintile 4
- Quintile 5



Note: The percentage change is not plotted in the above chart for groups with fewer than 30 placed applicants in any one cycle.

J.5 Placed 18 year old applicants from Scotland by SIMD2012/2016 quintile: SQA results day

Applicant Status	SIMD2012/2016	2010	2011	2012	2013	2014	2015	2016	2017	2018	2019
Placed	Quintile 1	890	850	920	1,000	1,150	1,040	1,100	1,170	1,270	1,270
	Quintile 2	1,520	1,380	1,420	1,500	1,670	1,650	1,670	1,660	1,730	1,590
	Quintile 3	2,330	2,100	2,170	2,210	2,280	2,300	2,270	2,200	2,310	2,110
	Quintile 4	3,190	2,960	3,040	3,030	3,100	3,160	3,130	3,020	3,130	3,050
	Quintile 5	4,490	4,290	4,420	4,390	4,250	4,350	4,380	4,370	4,500	4,480

J.6 Placed 18 year old applicants from Scotland by SIMD2012/2016 quintile: SQA results day

Placed 18 year old applicants: change relative to 2018 cycle totals

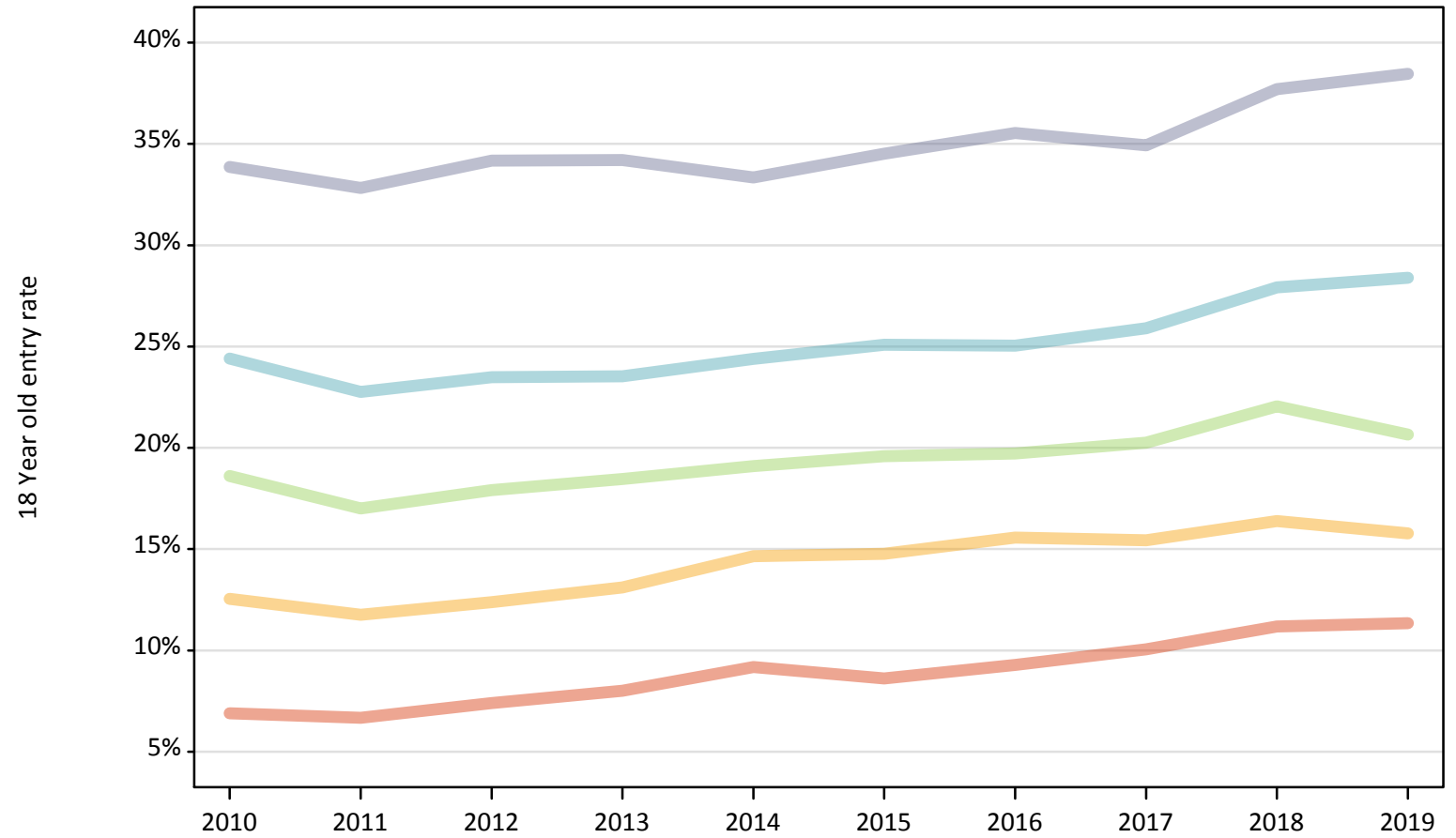
Applicant Status	SIMD2012/2016	2010	2011	2012	2013	2014	2015	2016	2017	2018	2019
Placed	Quintile 1	-30%	-33%	-28%	-21%	-10%	-18%	-14%	-8%	0%	-0%
	Quintile 2	-12%	-20%	-18%	-13%	-4%	-5%	-4%	-4%	0%	-8%
	Quintile 3	1%	-9%	-6%	-4%	-1%	-0%	-2%	-5%	0%	-8%
	Quintile 4	2%	-6%	-3%	-3%	-1%	1%	-0%	-4%	0%	-3%
	Quintile 5	-0%	-5%	-2%	-3%	-6%	-3%	-3%	-3%	0%	-0%

Note: The percentage change is not recorded in the above table for groups with fewer than 10 placed applicants in that cycle or in the 2018 cycle.

J.7 Placed 18 year old applicants from Scotland by SIMD2012/2016 quintile: SQA results day

Placed 18 year old applicants: entry rate

- Quintile 1
- Quintile 2
- Quintile 3
- Quintile 4
- Quintile 5



J.8 Placed 18 year old applicants from Scotland by SIMD2012/2016 quintile: SQA results day

Placed 18 year old applicants: entry rate

Applicant Status	SIMD2012/2016	2010	2011	2012	2013	2014	2015	2016	2017	2018	2019
Placed	Quintile 1	6.9%	6.7%	7.4%	8.0%	9.2%	8.6%	9.3%	10.1%	11.2%	11.3%
	Quintile 2	12.5%	11.8%	12.4%	13.1%	14.7%	14.8%	15.6%	15.4%	16.4%	15.8%
	Quintile 3	18.6%	17.0%	17.9%	18.5%	19.1%	19.6%	19.7%	20.3%	22.0%	20.6%
	Quintile 4	24.4%	22.8%	23.5%	23.5%	24.4%	25.1%	25.0%	25.9%	27.9%	28.4%
	Quintile 5	33.9%	32.8%	34.2%	34.2%	33.3%	34.5%	35.5%	34.9%	37.7%	38.5%

J.9 Placed 18 year old applicants from Scotland by SIMD2012/2016 quintile: SQA results day

Placed 18 year old applicants: entry rate (indexed to 100 = Quintile 1)

Applicant Status	SIMD2012/2016	2010	2011	2012	2013	2014	2015	2016	2017	2018	2019
Placed	Quintile 1	100	100	100	100	100	100	100	100	100	100
	Quintile 2	182	176	167	164	160	171	168	153	147	139
	Quintile 3	270	255	242	231	208	227	212	201	197	182
	Quintile 4	354	341	317	294	266	291	270	257	250	250
	Quintile 5	492	492	462	427	363	400	383	347	337	339