

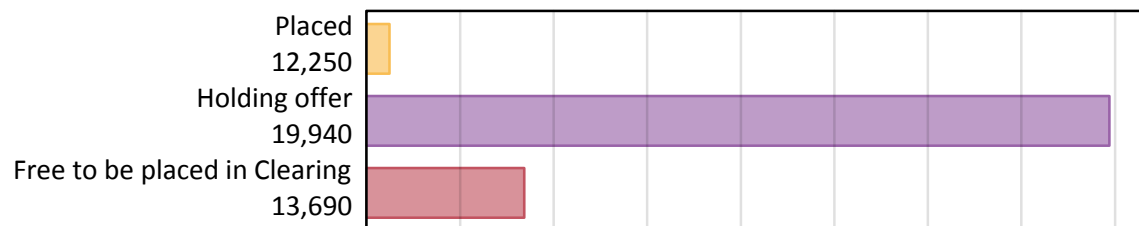
B7 Nursing analysis at 00:05 on Tuesday 6 August 2019 (SQA results day)

AB.1 Nursing applicants by type and status from all domiciles, 2019 cycle

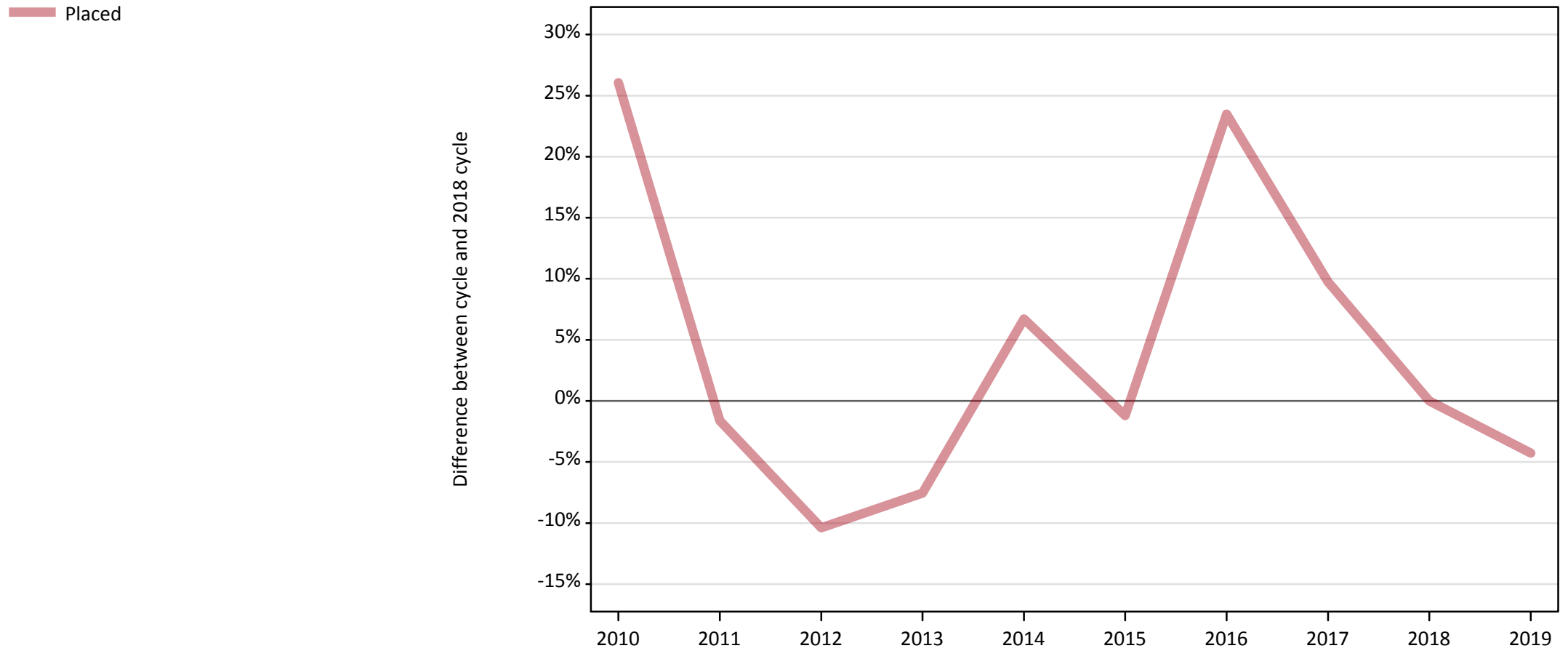
Nursing applicants at SQA results day. Applicants who applied to nursing but who are placed at, or holding offers solely to, non-B7 courses are not included.

Applicant type	Status	2019
Main scheme	Placed (Clearing)	130
	Placed (Firm)	11,270
	Placed (Insurance)	40
	Placed (Other)	770
	Holding offer	19,940
	Free to be placed in Clearing	13,690
Direct to Clearing	Placed (Direct to Clearing)	50
	Other (Direct to Clearing)	220
All applicants	Placed	12,250

AB.2 Summary of applicants who are placed or holding offers to nursing, or are free to be placed in Clearing, from all domiciles



AB.3 All placed applicants to nursing from all domiciles: SQA results day
All placed applicants to nursing: change relative to 2018 cycle totals



Note: The percentage change is not plotted in the above chart for groups with fewer than 30 placed applicants in any one cycle.

AB.4 All placed applicants to nursing from all domiciles: SQA results day

All placed applicants to nursing: applicants at SQA results day

Applicant type	Status	2010	2011	2012	2013	2014	2015	2016	2017	2018	2019
All applicants	Placed	16,130	12,590	11,460	11,830	13,650	12,640	15,800	14,040	12,790	12,250

AB.5 All placed applicants to nursing from all domiciles: SQA results day

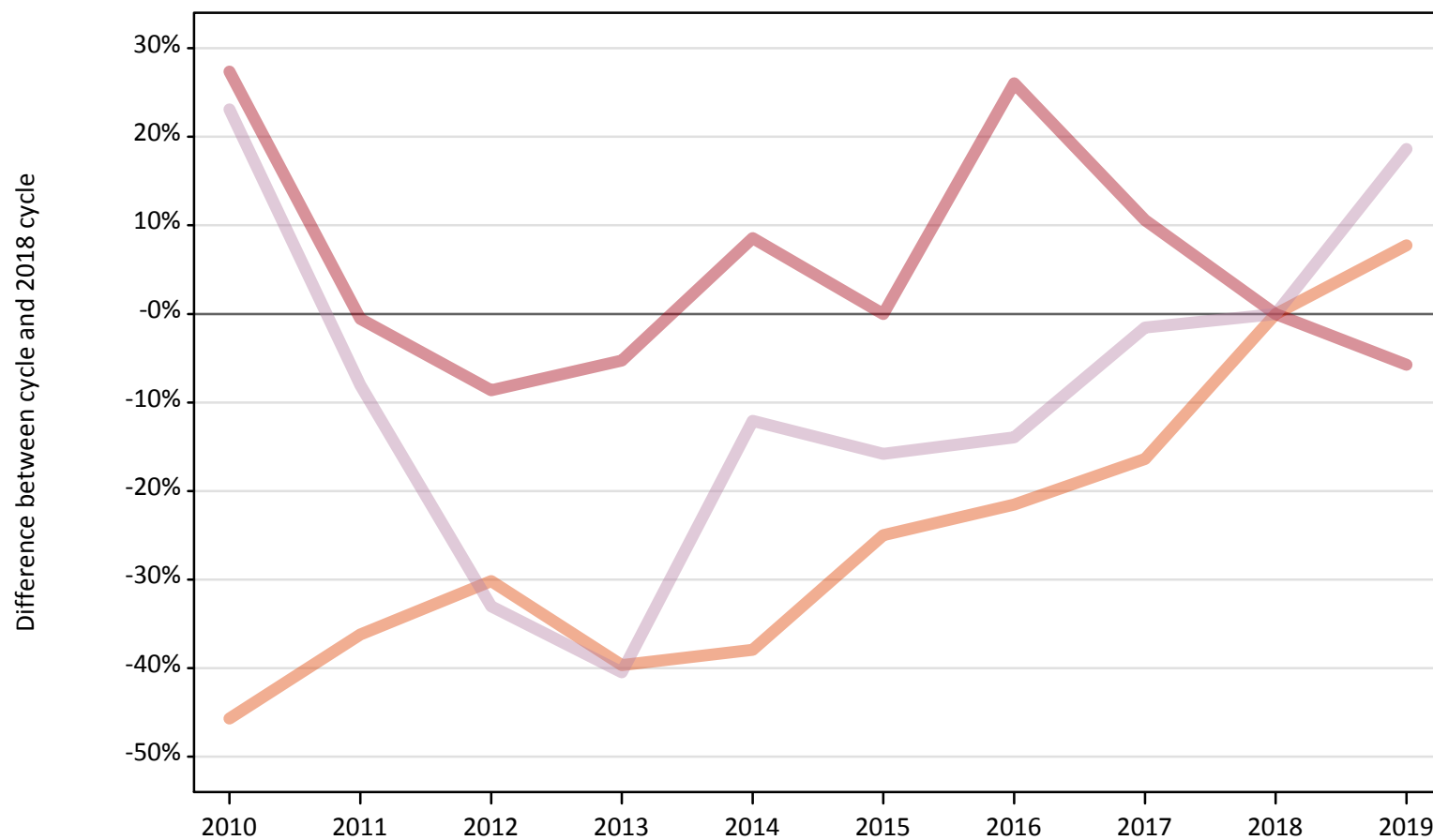
All placed applicants to nursing: change relative to 2018 cycle totals

Applicant type	Status	2010	2011	2012	2013	2014	2015	2016	2017	2018	2019
All applicants	Placed	26%	-2%	-10%	-8%	7%	-1%	23%	10%	0%	-4%

Note: The percentage change is not recorded in the above table for groups with fewer than 10 placed applicants in that cycle or in the 2018 cycle.

AB.6 Placed main scheme applicants to nursing from all domiciles: SQA results day
All Main scheme placed routes (excluding Adjustment): change relative to 2018 cycle totals

- Placed (Clearing)
- Placed (Firm)
- Placed (Insurance)
- Placed (Other)



Note: The percentage change is not plotted in the above chart for groups with fewer than 30 placed applicants in any one cycle.

AB.7 Placed main scheme applicants to nursing from all domiciles: SQA results day

All Main scheme placed routes (excluding Adjustment): applicants at SQA results day

Applicant type	Status	2010	2011	2012	2013	2014	2015	2016	2017	2018	2019
Main scheme	Placed (Clearing)	60	70	80	70	70	90	90	100	120	130
	Placed (Firm)	15,230	11,890	10,920	11,320	12,980	11,950	15,070	13,220	11,950	11,270
	Placed (Insurance)	40	20	20	30	30	40	60	50	40	40
	Placed (Other)	790	590	430	380	570	540	560	640	650	770

AB.8 Placed main scheme applicants to nursing from all domiciles: SQA results day

All Main scheme placed routes (excluding Adjustment): change relative to 2018 cycle totals

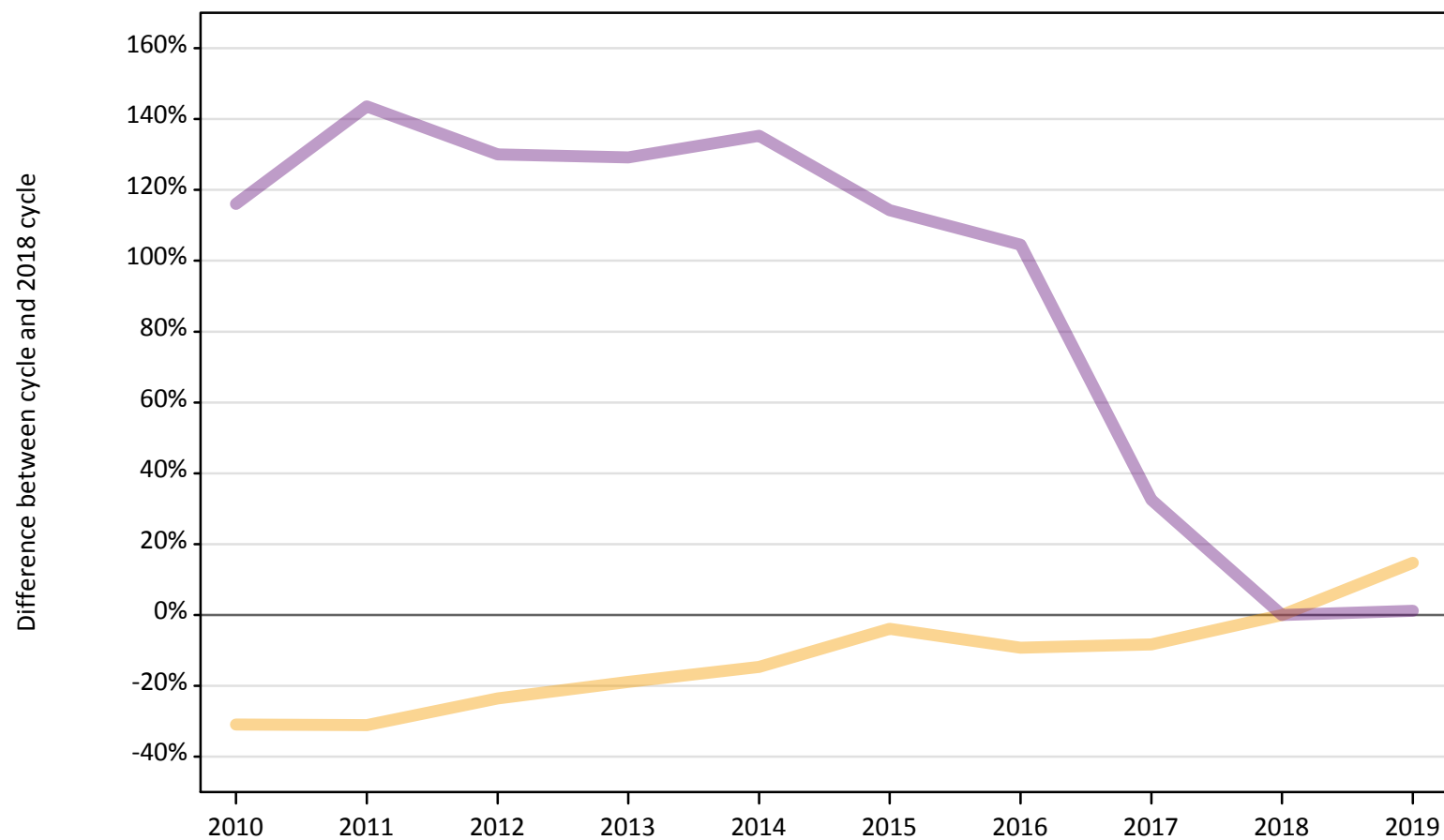
Applicant type	Status	2010	2011	2012	2013	2014	2015	2016	2017	2018	2019
Main scheme	Placed (Clearing)	-46%	-36%	-30%	-40%	-38%	-25%	-22%	-16%	0%	8%
	Placed (Firm)	27%	-1%	-9%	-5%	9%	-0%	26%	11%	0%	-6%
	Placed (Insurance)	-5%	-40%	-48%	-18%	-25%	5%	53%	25%	0%	10%
	Placed (Other)	23%	-8%	-33%	-40%	-12%	-16%	-14%	-2%	0%	19%

Note: The percentage change is not recorded in the above table for groups with fewer than 10 placed applicants in that cycle or in the 2018 cycle.

AB.9 Main scheme nursing applicants not currently placed from all domiciles: SQA results day

Applicants in unplaced states: change relative to 2018 cycle totals

— Holding offer
— Free to be placed in Clearing



Note: The percentage change is not plotted in the above chart for groups with fewer than 30 unplaced applicants in any one cycle.

AB.10 Main scheme nursing applicants not currently placed from all domiciles: SQA results day

Applicants in unplaced states: applicants at SQA results day

Applicant type	Status	2010	2011	2012	2013	2014	2015	2016	2017	2018	2019
Main scheme	Holding offer	12,010	11,980	13,280	14,100	14,830	16,710	15,770	15,930	17,380	19,940
	Free to be placed in Clearing	29,210	32,940	31,100	30,990	31,810	28,980	27,660	17,920	13,520	13,690

AB.11 Main scheme nursing applicants not currently placed from all domiciles: SQA results day

Applicants in unplaced states: change relative to 2018 cycle totals

Applicant type	Status	2010	2011	2012	2013	2014	2015	2016	2017	2018	2019
Main scheme	Holding offer	-31%	-31%	-24%	-19%	-15%	-4%	-9%	-8%	0%	15%
	Free to be placed in Clearing	116%	144%	130%	129%	135%	114%	105%	33%	0%	1%

Note: The percentage change is not recorded in the above table for groups with fewer than 10 unplaced applicants in that cycle or in the 2018 cycle.