

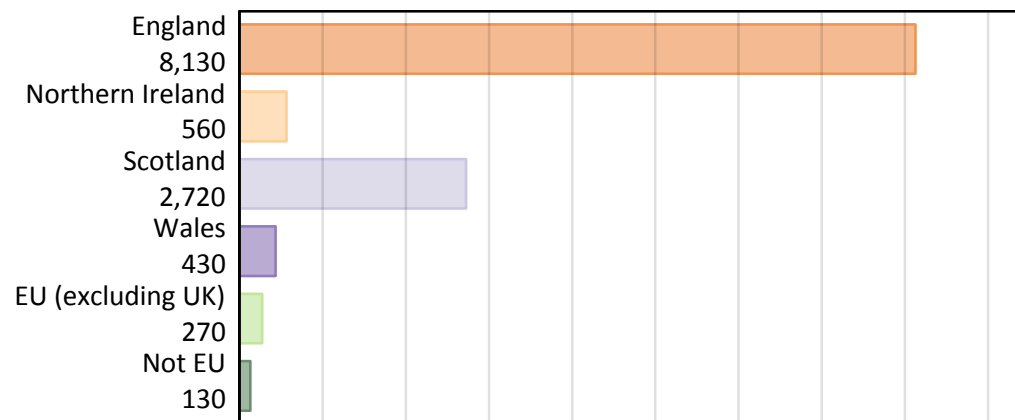
B7 Nursing analysis at 00:05 on Tuesday 6 August 2019 (SQA results day)

BB.1 Placed applicants to nursing by country of provider and domicile, 2019 cycle

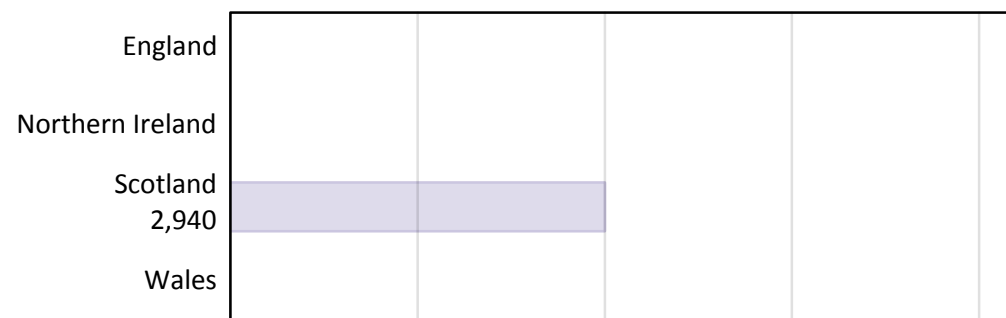
Domicile of applicant	Country of Provider				
	England	Northern Ireland	Scotland	Wales	UK
England			40		8,130
Northern Ireland			30		560
Scotland			2,720		2,720
Wales			0		430
EU (excluding UK)			150		270
Not EU			10		130
All			2,940		12,250

Note that figures for England, Northern Ireland, and Wales are not reported here.

BB.2 Placed applicants to nursing by domicile group



BB.3 Placed applicants to nursing by country of provider

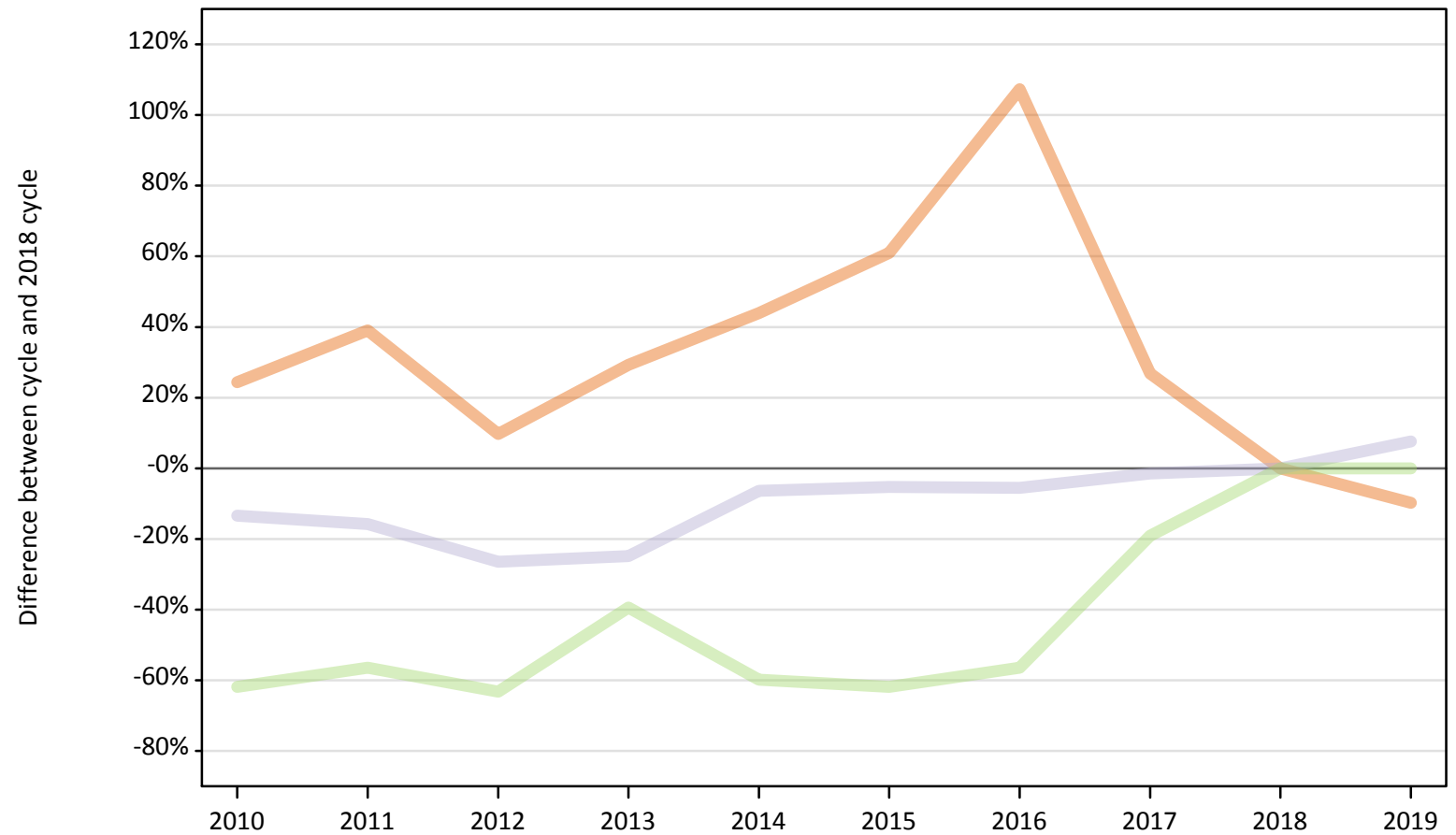


Note that figures for England, Northern Ireland, and Wales are not reported here.

BB.4 Placed applicants to nursing at SQA results day: providers in Scotland

Selected applicant domiciles: difference between cycle and 2018 cycle (at SQA results day)

- England
- Northern Ireland
- Scotland
- Wales
- EU (excluding UK)
- Not EU



Note: The percentage change is not plotted in the above chart for groups with fewer than 30 placed applicants in any one cycle.

BB.5 Placed applicants to nursing at SQA results day: providers in Scotland

Placed applicants to nursing by domicile (at SQA results day)

Domicile of applicant	2010	2011	2012	2013	2014	2015	2016	2017	2018	2019
England	50	60	50	50	60	70	90	50	40	40
Northern Ireland	50	50	40	50	70	50	80	50	40	30
Scotland	2,190	2,130	1,860	1,900	2,360	2,390	2,380	2,490	2,520	2,720
Wales	0	0	0	0	0	0	0	0	0	0
EU (excluding UK)	60	60	50	90	60	60	60	120	150	150
Not EU	10	20	10	10	0	10	10	10	10	10

BB.6 Placed applicants to nursing at SQA results day: providers in Scotland

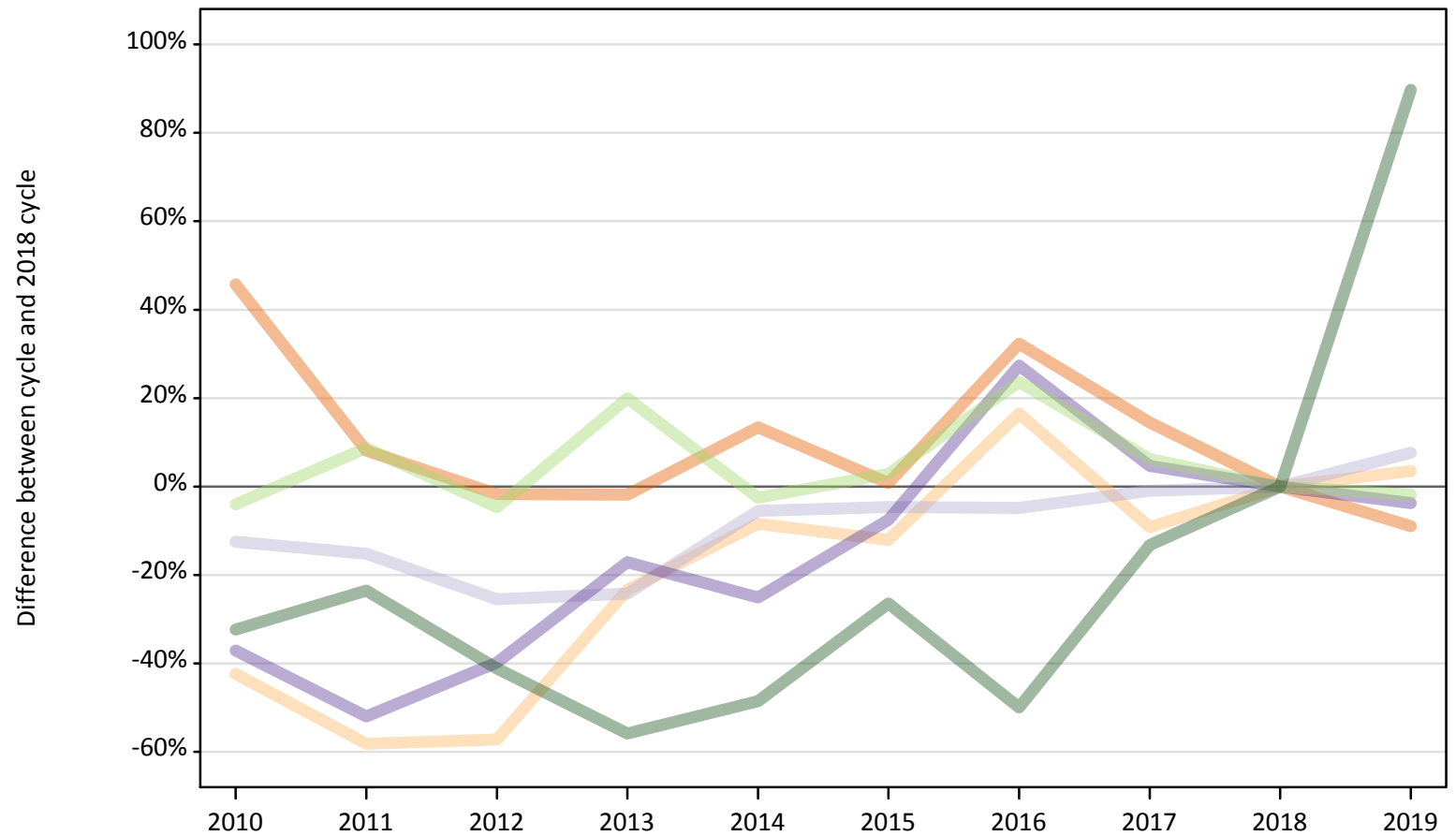
Selected applicant domiciles: difference between cycle and 2018 cycle (at SQA results day)

Domicile of applicant	2010	2011	2012	2013	2014	2015	2016	2017	2018	2019
England	24%	39%	10%	29%	44%	61%	107%	27%	0%	-10%
Northern Ireland	36%	33%	3%	36%	94%	50%	111%	42%	0%	-28%
Scotland	-13%	-16%	-26%	-25%	-6%	-5%	-6%	-1%	0%	8%
Wales										
EU (excluding UK)	-62%	-56%	-63%	-39%	-60%	-62%	-56%	-19%	0%	0%
Not EU	30%	60%				40%	0%	0%	0%	40%

Note: The percentage change is not recorded in the above table for groups with fewer than 10 placed applicants in that cycle or in the 2018 cycle.

BB.7 Placed applicants to nursing at SQA results day: providers in the UK
 Selected applicant domiciles: difference between cycle and 2018 cycle (at SQA results day)

- England
- Northern Ireland
- Scotland
- Wales
- EU (excluding UK)
- Not EU



Note: The percentage change is not plotted in the above chart for groups with fewer than 30 placed applicants in any one cycle.

BB.8 Placed applicants to nursing at SQA results day: providers in the UK

Placed applicants to nursing by domicile (at SQA results day)

Domicile of applicant	2010	2011	2012	2013	2014	2015	2016	2017	2018	2019
England	13,010	9,650	8,770	8,760	10,120	9,000	11,810	10,220	8,930	8,130
Northern Ireland	310	230	230	420	500	480	640	500	550	560
Scotland	2,210	2,140	1,880	1,920	2,390	2,410	2,410	2,500	2,530	2,720
Wales	280	220	270	370	340	420	570	470	450	430
EU (excluding UK)	260	300	260	330	270	280	340	290	280	270
Not EU	50	50	40	30	40	50	30	60	70	130

BB.9 Placed applicants to nursing at SQA results day: providers in the UK

Selected applicant domiciles: difference between cycle and 2018 cycle (at SQA results day)

Domicile of applicant	2010	2011	2012	2013	2014	2015	2016	2017	2018	2019
England	46%	8%	-2%	-2%	13%	1%	32%	14%	0%	-9%
Northern Ireland	-42%	-58%	-57%	-23%	-8%	-12%	17%	-9%	0%	3%
Scotland	-12%	-15%	-26%	-24%	-5%	-5%	-5%	-1%	0%	8%
Wales	-37%	-52%	-40%	-17%	-25%	-8%	27%	5%	0%	-4%
EU (excluding UK)	-4%	9%	-5%	20%	-3%	3%	24%	6%	0%	-2%
Not EU	-32%	-24%	-41%	-56%	-49%	-26%	-50%	-13%	0%	90%

Note: The percentage change is not recorded in the above table for groups with fewer than 10 placed applicants in that cycle or in the 2018 cycle.