

B7 Nursing analysis at 00:05 on Tuesday 6 August 2019 (SQA results day)

CB.1 Placed applicants to nursing by country of domicile and age group, 2019 cycle (SQA results day)

Domicile of applicant	Age group				
	17 and under	18	19	20 to 24	25 and over
England	0	1,060	990	2,010	4,070
Northern Ireland	0	20	90	200	250
Scotland	20	540	280	630	1,260
Wales	0	30	80	110	210
UK	20	1,650	1,430	2,950	5,790

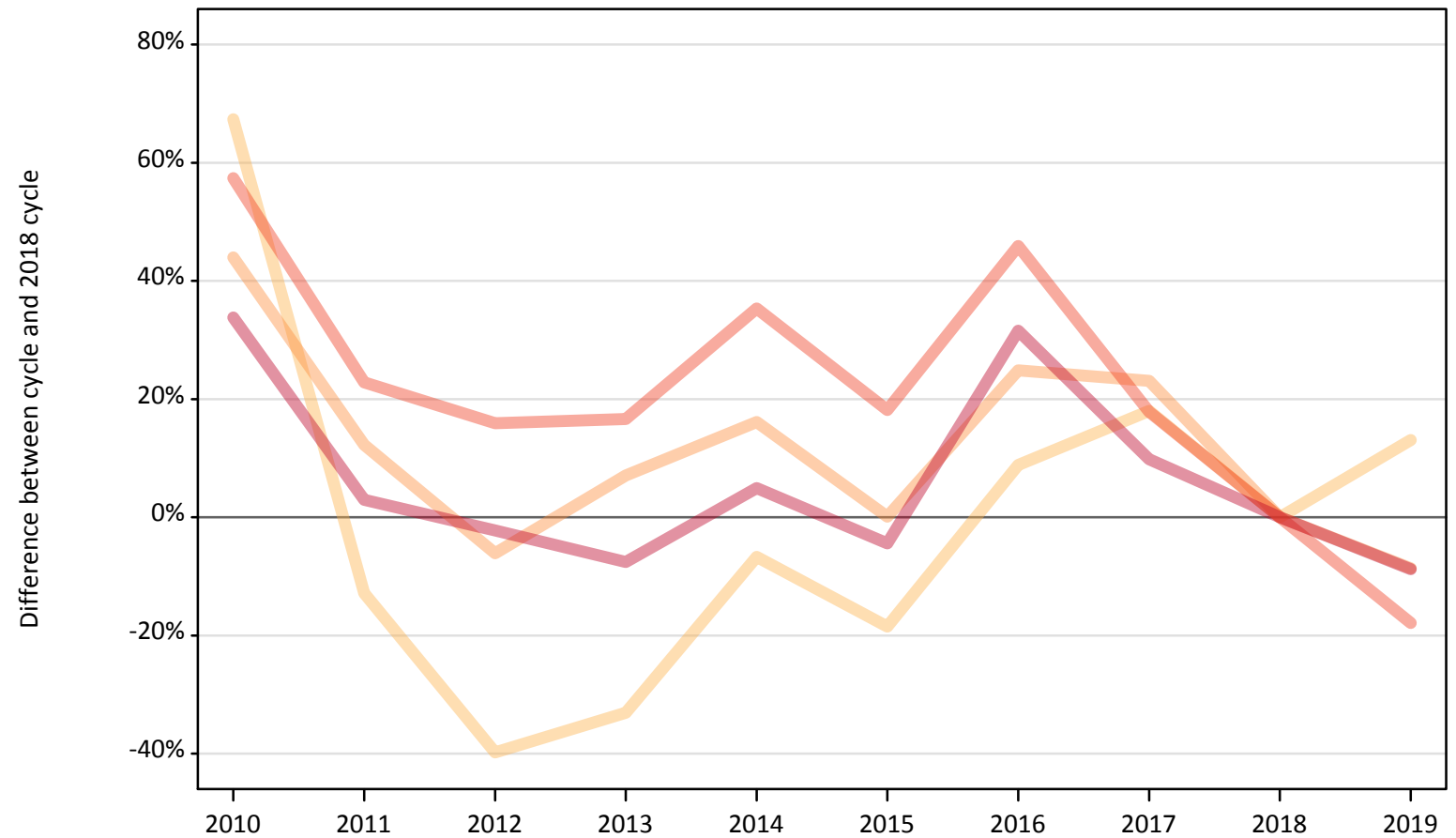
CB.2 Proportion of 18 year old population placed by country of domicile, 2019 cycle (SQA results day)

Domicile of applicant	Age group	2019
England	18	0.2%
Northern Ireland	18	0.1%
Scotland	18	1.0%
Wales	18	0.1%

CB.3 Placed applicants to nursing from England by age group at SQA results day

Selected age groups: difference between cycle and 2018 cycle

- 17 and under
- 18
- 19
- 20 to 24
- 25 and over



Note: The percentage change is not plotted in the above chart for groups with fewer than 30 placed applicants in any one cycle.

CB.4 Placed applicants to nursing from England by age group at SQA results day

All age groups

Domicile of applicant	Age group	2010	2011	2012	2013	2014	2015	2016	2017	2018	2019
England	17 and under	60	20	0	0	0	0	0	0	0	0
	18	1,570	820	570	630	880	770	1,020	1,110	940	1,060
	19	1,550	1,210	1,010	1,150	1,250	1,080	1,350	1,330	1,080	990
	20 to 24	3,850	3,000	2,830	2,850	3,310	2,890	3,570	2,880	2,450	2,010
	25 and over	5,970	4,590	4,360	4,120	4,680	4,260	5,870	4,900	4,460	4,070

CB.5 Placed applicants to nursing from England by age group at SQA results day

Selected age groups: difference between cycle and 2018 cycle

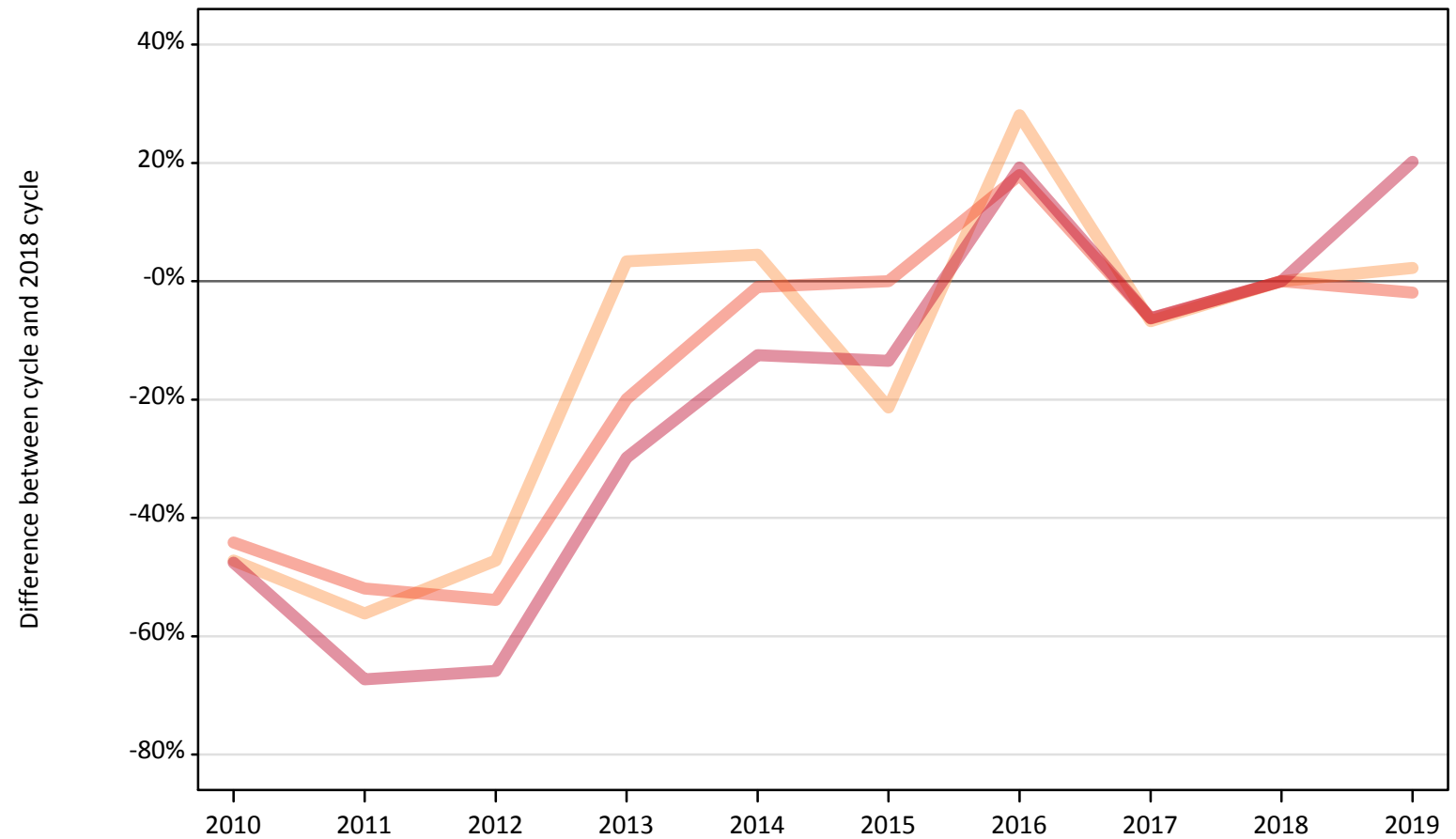
Domicile of applicant	Age group	2010	2011	2012	2013	2014	2015	2016	2017	2018	2019
England	17 and under										
	18	67%	-13%	-40%	-33%	-7%	-19%	9%	18%	0%	13%
	19	44%	12%	-6%	7%	16%	0%	25%	23%	0%	-9%
	20 to 24	57%	23%	16%	17%	35%	18%	46%	18%	0%	-18%
	25 and over	34%	3%	-2%	-8%	5%	-4%	32%	10%	0%	-9%

Note: The percentage change is not recorded in the above table for groups with fewer than 10 placed applicants in that cycle or in the 2018 cycle.

CB.6 Placed applicants to nursing from Northern Ireland by age group at SQA results day

Selected age groups: difference between cycle and 2018 cycle

- 17 and under
- 18
- 19
- 20 to 24
- 25 and over



Note: The percentage change is not plotted in the above chart for groups with fewer than 30 placed applicants in any one cycle.

CB.7 Placed applicants to nursing from Northern Ireland by age group at SQA results day

All age groups

Domicile of applicant	Age group	2010	2011	2012	2013	2014	2015	2016	2017	2018	2019
Northern Ireland	17 and under	0	0	0	0	0	0	0	0	0	0
	18	40	20	20	20	20	20	30	20	40	20
	19	50	40	50	90	90	70	110	80	90	90
	20 to 24	120	100	100	170	200	210	240	190	210	200
	25 and over	110	70	70	150	180	180	250	200	210	250

CB.8 Placed applicants to nursing from Northern Ireland by age group at SQA results day

Selected age groups: difference between cycle and 2018 cycle

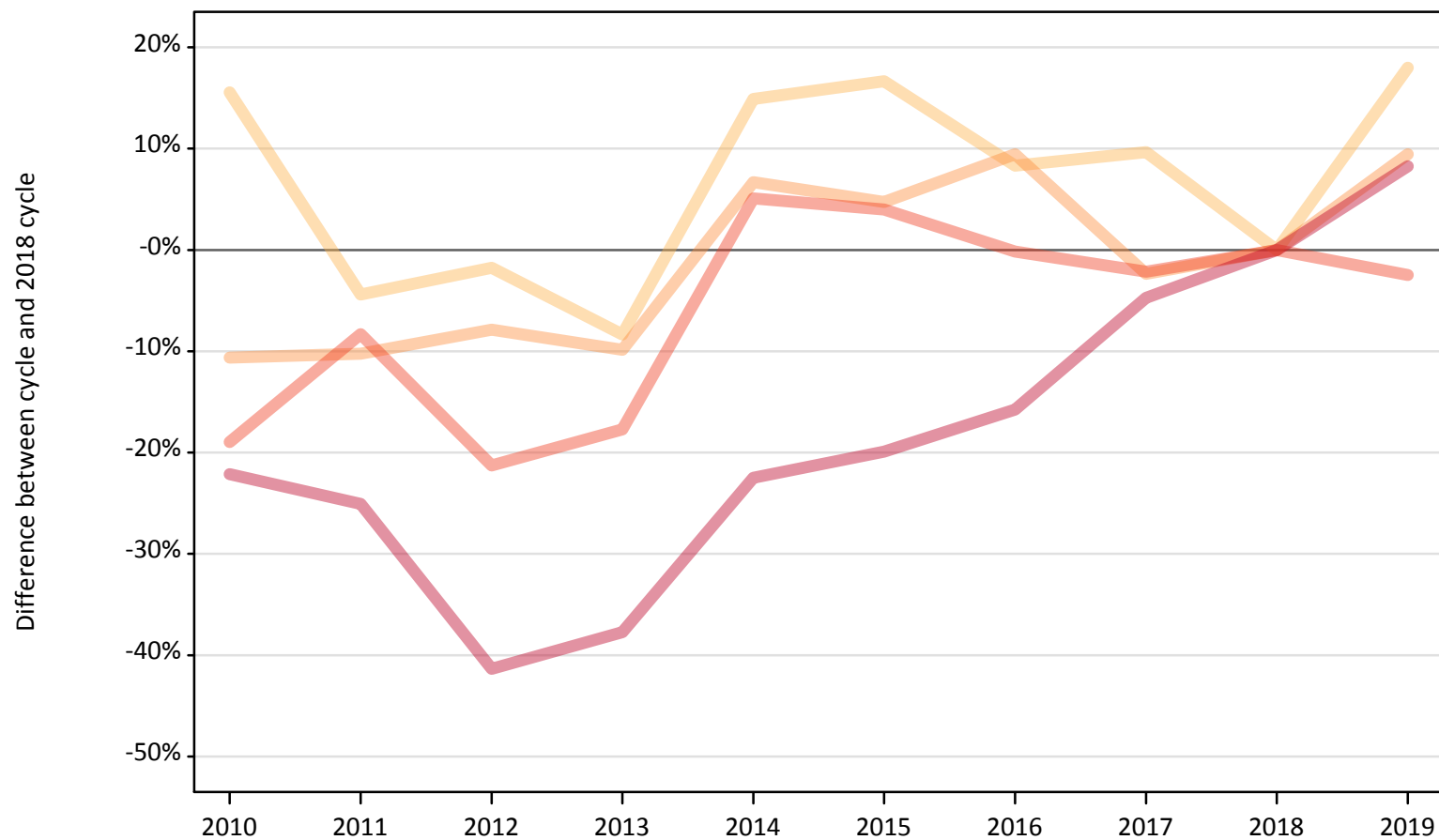
Domicile of applicant	Age group	2010	2011	2012	2013	2014	2015	2016	2017	2018	2019
Northern Ireland	17 and under										
	18	0%	-50%	-55%	-64%	-52%	-45%	-29%	-43%	0%	-52%
	19	-47%	-56%	-47%	3%	4%	-21%	28%	-7%	0%	2%
	20 to 24	-44%	-52%	-54%	-20%	-1%	0%	18%	-6%	0%	-2%
	25 and over	-48%	-67%	-66%	-30%	-13%	-13%	19%	-6%	0%	20%

Note: The percentage change is not recorded in the above table for groups with fewer than 10 placed applicants in that cycle or in the 2018 cycle.

CB.9 Placed applicants to nursing from Scotland by age group at SQA results day

Selected age groups: difference between cycle and 2018 cycle

- 17 and under
- 18
- 19
- 20 to 24
- 25 and over



Note: The percentage change is not plotted in the above chart for groups with fewer than 30 placed applicants in any one cycle.

CB.10 Placed applicants to nursing from Scotland by age group at SQA results day

All age groups

Domicile of applicant	Age group	2010	2011	2012	2013	2014	2015	2016	2017	2018	2019
Scotland	17 and under	30	20	10	10	10	10	10	20	10	20
	18	530	440	450	420	520	530	490	500	460	540
	19	230	230	230	230	270	270	280	250	250	280
	20 to 24	530	600	510	530	680	680	650	640	650	630
	25 and over	900	870	680	720	900	930	980	1,110	1,160	1,260

CB.11 Placed applicants to nursing from Scotland by age group at SQA results day

Selected age groups: difference between cycle and 2018 cycle

Domicile of applicant	Age group	2010	2011	2012	2013	2014	2015	2016	2017	2018	2019
Scotland	17 and under										
	18	16%	-4%	-2%	-8%	15%	17%	8%	10%	0%	18%
	19	-11%	-10%	-8%	-10%	7%	5%	9%	-2%	0%	9%
	20 to 24	-19%	-8%	-21%	-18%	5%	4%	-0%	-2%	0%	-2%
	25 and over	-22%	-25%	-41%	-38%	-22%	-20%	-16%	-5%	0%	8%

Note: The percentage change is not recorded in the above table for groups with fewer than 10 placed applicants in that cycle or in the 2018 cycle.

CB.12 Placed applicants to nursing from Wales by age group at SQA results day

Selected age groups: difference between cycle and 2018 cycle

- 17 and under
- 18
- 19
- 20 to 24
- 25 and over



Note: The percentage change is not plotted in the above chart for groups with fewer than 30 placed applicants in any one cycle.

CB.13 Placed applicants to nursing from Wales by age group at SQA results day

All age groups

Domicile of applicant	Age group	2010	2011	2012	2013	2014	2015	2016	2017	2018	2019
Wales	17 and under	0	0	0	0	0	0	0	0	0	0
	18	20	10	20	20	30	20	40	40	50	30
	19	50	40	40	70	50	60	90	70	50	80
	20 to 24	100	70	110	130	120	140	210	160	150	110
	25 and over	110	90	100	150	140	200	240	200	210	210

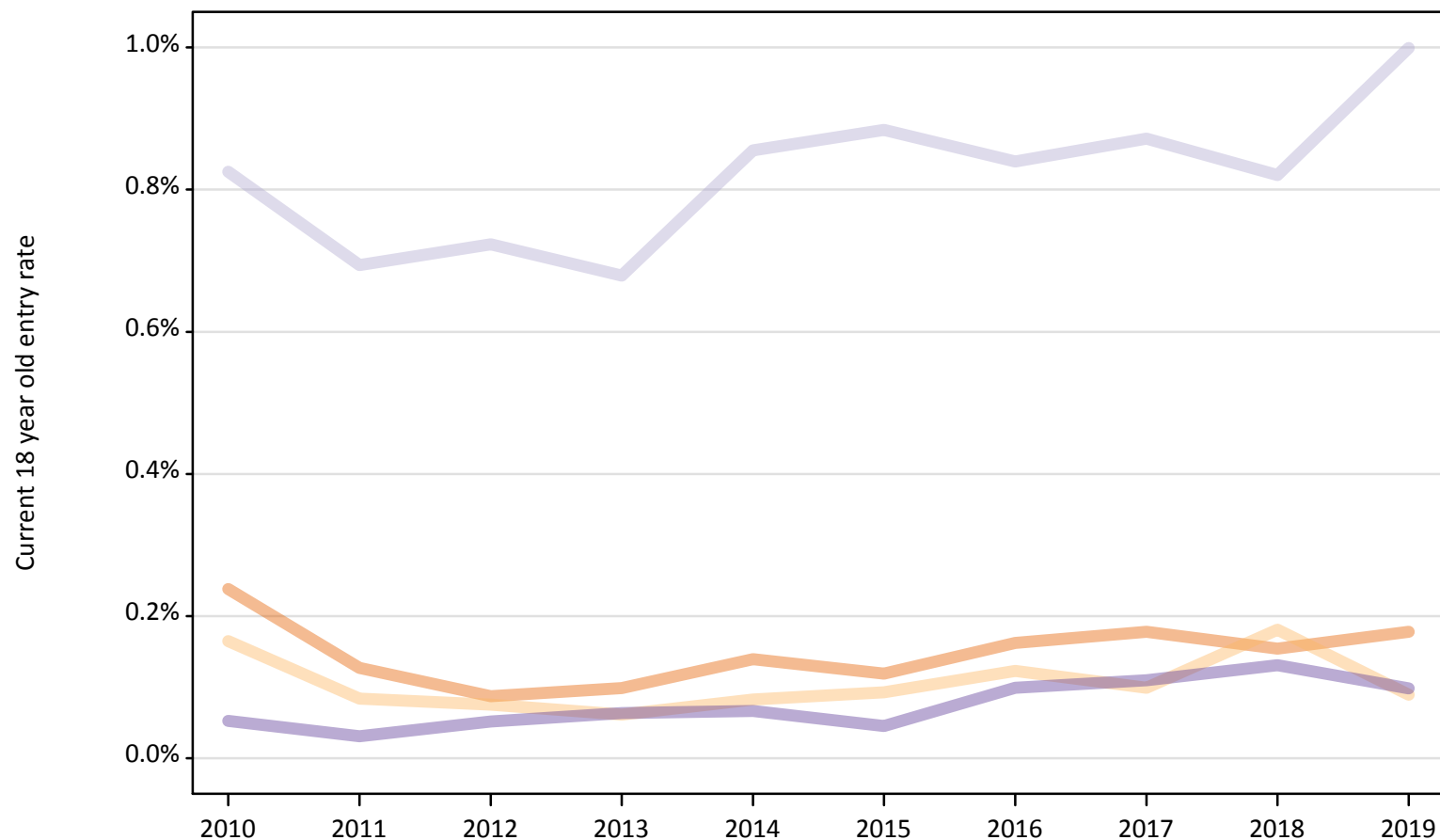
CB.14 Placed applicants to nursing from Wales by age group at SQA results day

Selected age groups: difference between cycle and 2018 cycle

Domicile of applicant	Age group	2010	2011	2012	2013	2014	2015	2016	2017	2018	2019
Wales	17 and under										
	18	-53%	-73%	-56%	-47%	-44%	-62%	-20%	-13%	0%	-27%
	19	2%	-10%	-10%	33%	2%	22%	78%	43%	0%	53%
	20 to 24	-33%	-51%	-27%	-11%	-19%	-7%	38%	9%	0%	-26%
	25 and over	-46%	-58%	-52%	-27%	-32%	-3%	18%	-4%	0%	4%

Note: The percentage change is not recorded in the above table for groups with fewer than 10 placed applicants in that cycle or in the 2018 cycle.

CB.15 Entry rates for 18 year olds by UK country of domicile: SQA results day
Placed 18 year old applicants to nursing as a proportion of the 18 year old population



CB.16 Entry rates for 18 year olds by UK country of domicile: SQA results day
Placed 18 year old applicants to nursing as a proportion of the 18 year old population

Domicile of applicant	Age group	2010	2011	2012	2013	2014	2015	2016	2017	2018	2019
England	18	0.2%	0.1%	0.1%	0.1%	0.1%	0.1%	0.2%	0.2%	0.2%	0.2%
Northern Ireland	18	0.2%	0.1%	0.1%	0.1%	0.1%	0.1%	0.1%	0.1%	0.2%	0.1%
Scotland	18	0.8%	0.7%	0.7%	0.7%	0.9%	0.9%	0.8%	0.9%	0.8%	1.0%
Wales	18	0.1%	0.0%	0.1%	0.1%	0.1%	0.0%	0.1%	0.1%	0.1%	0.1%