

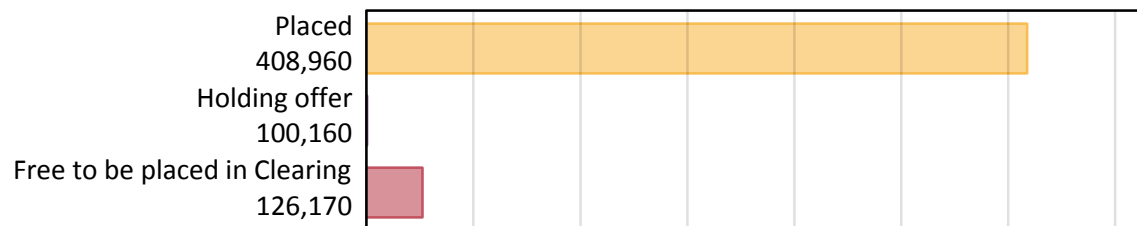
# Daily Clearing Analysis: Overview

Analysis at 00:05 on Thursday 15 August 2019 (A level results day)

## A.1 Applicants by type and status from all domiciles, 2019 cycle

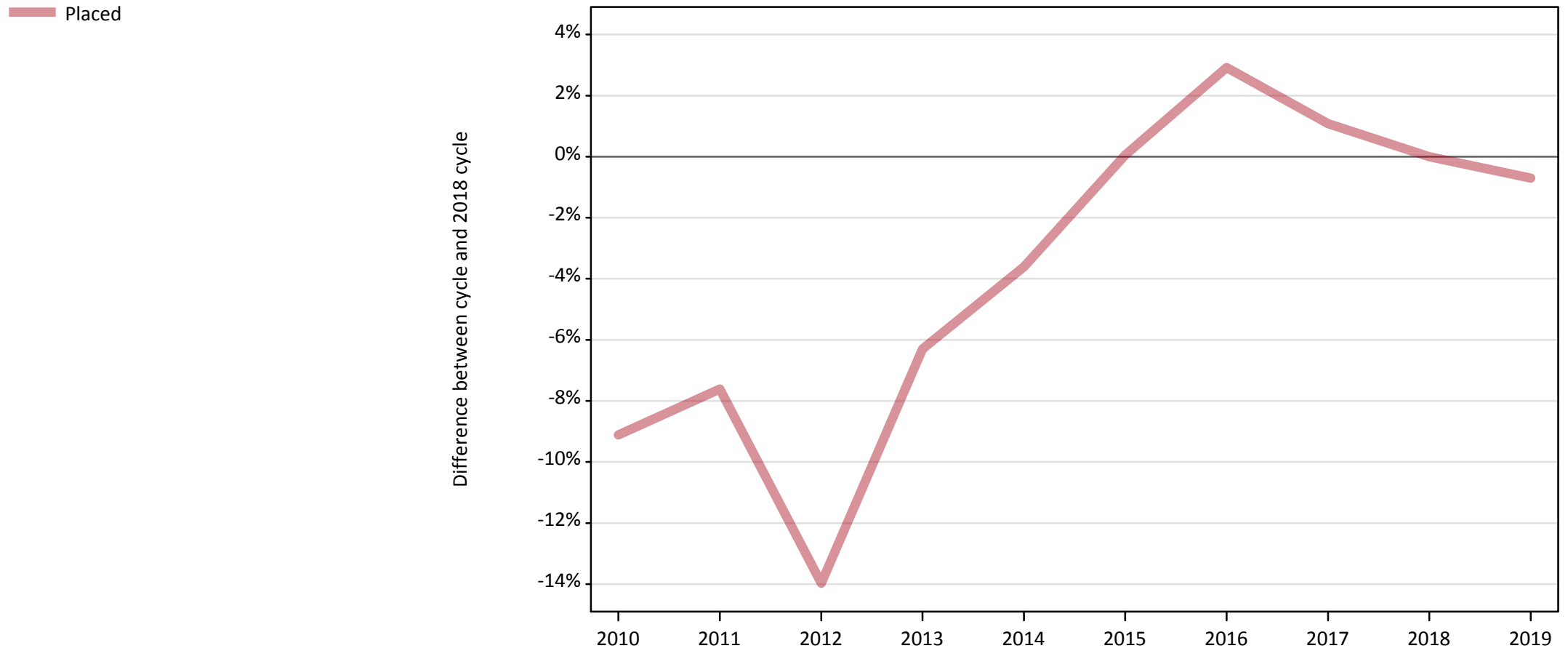
Applicant type	Status	2019
Main scheme	Placed (Clearing)	4,270
	Placed (Adjustment)	0
	Placed (Firm)	358,670
	Placed (Insurance)	29,850
	Placed (Other)	12,480
	Holding offer	100,160
	Free to be placed in Clearing	126,170
Direct to Clearing	Placed (Direct to Clearing)	3,690
	Other (Direct to Clearing)	8,720
All applicants	Placed	408,960

## A.2 Summary of applicants who are placed, holding offers or free to be placed in Clearing ( all domiciles )



### A.3 All placed applicants from all domiciles: A level results day

All placed applicants: difference between cycle and 2018 cycle



Note: The percentage change is not plotted in the above chart for groups with fewer than 30 placed applicants in any one cycle.

#### A.4 All placed applicants from all domiciles: A level results day

All placed applicants: applicants at A level results day

Applicant type	Status	2010	2011	2012	2013	2014	2015	2016	2017	2018	2019
All applicants	Placed	374,330	380,520	354,310	385,910	396,990	412,080	423,880	416,310	411,860	408,960

#### A.5 All placed applicants from all domiciles: A level results day

All placed applicants: difference between cycle and 2018 cycle

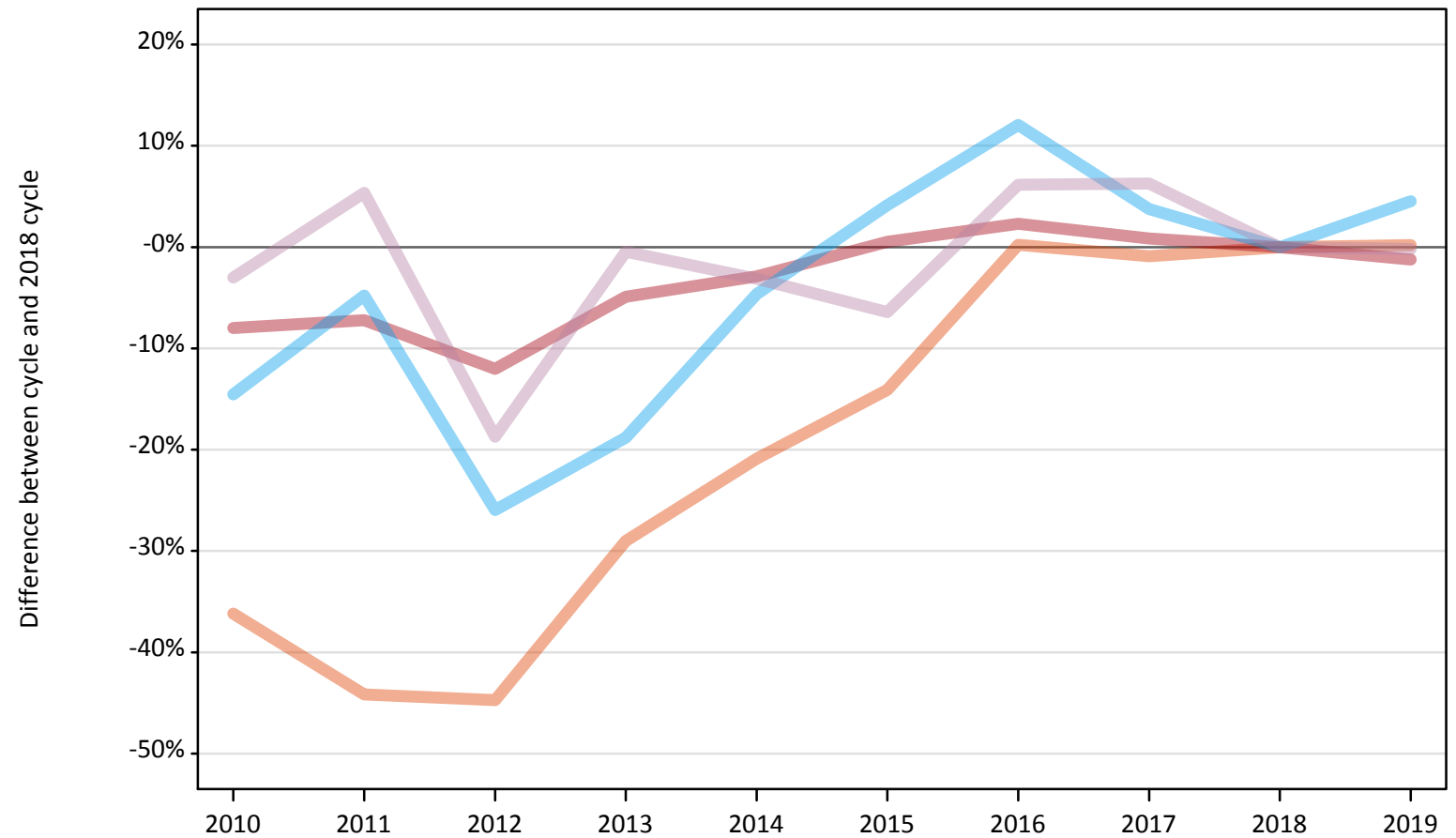
Applicant type	Status	2010	2011	2012	2013	2014	2015	2016	2017	2018	2019
All applicants	Placed	-9%	-8%	-14%	-6%	-4%	0%	3%	1%	0%	-1%

Note: The percentage change is not recorded in the above table for groups with fewer than 10 placed applicants in that cycle or in the 2018 cycle.

## A.6 Placed main scheme applicants from all domiciles: A level results day

All Main scheme placed routes (excluding Adjustment): difference between cycle and 2018 cycle

- Placed (Clearing)
- Placed (Firm)
- Placed (Insurance)
- Placed (Other)



Note: The percentage change is not plotted in the above chart for groups with fewer than 30 placed applicants in any one cycle.

### A.7 Placed main scheme applicants from all domiciles: A level results day

All Main scheme placed routes (excluding Adjustment): applicants at A level results day

Applicant type	Status	2010	2011	2012	2013	2014	2015	2016	2017	2018	2019
Main scheme	Placed (Clearing)	2,720	2,380	2,350	3,020	3,370	3,660	4,270	4,220	4,260	4,270
	Placed (Firm)	334,120	336,870	319,460	345,300	352,590	364,990	371,430	366,220	363,080	358,670
	Placed (Insurance)	24,400	27,190	21,140	23,180	27,230	29,740	31,990	29,630	28,550	29,850
	Placed (Other)	12,130	13,180	10,170	12,450	12,120	11,700	13,280	13,290	12,510	12,480

### A.8 Placed main scheme applicants from all domiciles: A level results day

All Main scheme placed routes (excluding Adjustment): difference between cycle and 2018 cycle

Applicant type	Status	2010	2011	2012	2013	2014	2015	2016	2017	2018	2019
Main scheme	Placed (Clearing)	-36%	-44%	-45%	-29%	-21%	-14%	0%	-1%	0%	0%
	Placed (Firm)	-8%	-7%	-12%	-5%	-3%	1%	2%	1%	0%	-1%
	Placed (Insurance)	-15%	-5%	-26%	-19%	-5%	4%	12%	4%	0%	5%
	Placed (Other)	-3%	5%	-19%	-0%	-3%	-6%	6%	6%	0%	-0%

Note: The percentage change is not recorded in the above table for groups with fewer than 10 placed applicants in that cycle or in the 2018 cycle.

**A.9 Main scheme applicants placed through adjustment: A level results day**

Placed through adjustment: difference between cycle and 2018 cycle

**[Analysis on placed by adjustment available from 16 August 2019]**

**A.10 Main scheme applicants placed through adjustment: A level results day**

Placed through adjustment: applicants at A level results day

**[Analysis on placed by adjustment available from 16 August 2019]**

**A.11 Main scheme applicants placed through adjustment: A level results day**

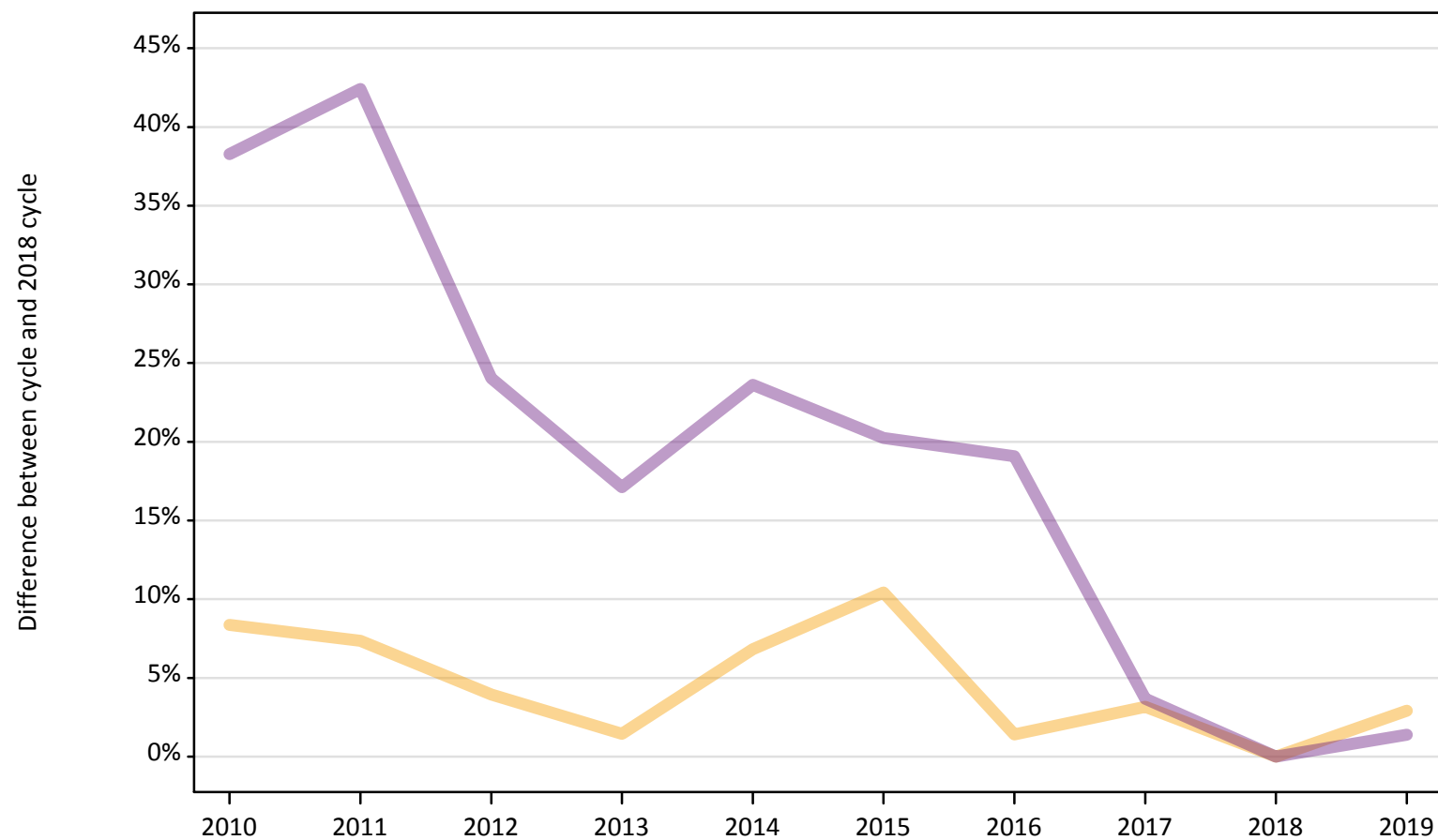
Placed through adjustment: difference between cycle and 2018 cycle

**[Analysis on placed by adjustment available from 16 August 2019]**

## A.12 Main scheme applicants not currently placed from all domiciles: A level results day

Applicants in unplaced states: difference between cycle and 2018 cycle

— Holding offer  
— Free to be placed in Clearing



Note: The percentage change is not plotted in the above chart for groups with fewer than 30 unplaced applicants in any one cycle.

### A.13 Main scheme applicants not currently placed from all domiciles: A level results day

Applicants in unplaced states: applicants at A level results day

Applicant type	Status	2010	2011	2012	2013	2014	2015	2016	2017	2018	2019
Main scheme	Holding offer	105,470	104,490	101,160	98,740	103,970	107,470	98,690	100,410	97,330	100,160
	Free to be placed in Clearing	172,070	177,200	154,350	145,730	153,830	149,630	148,180	129,020	124,430	126,170

### A.14 Main scheme applicants not currently placed from all domiciles: A level results day

Applicants in unplaced states: difference between cycle and 2018 cycle

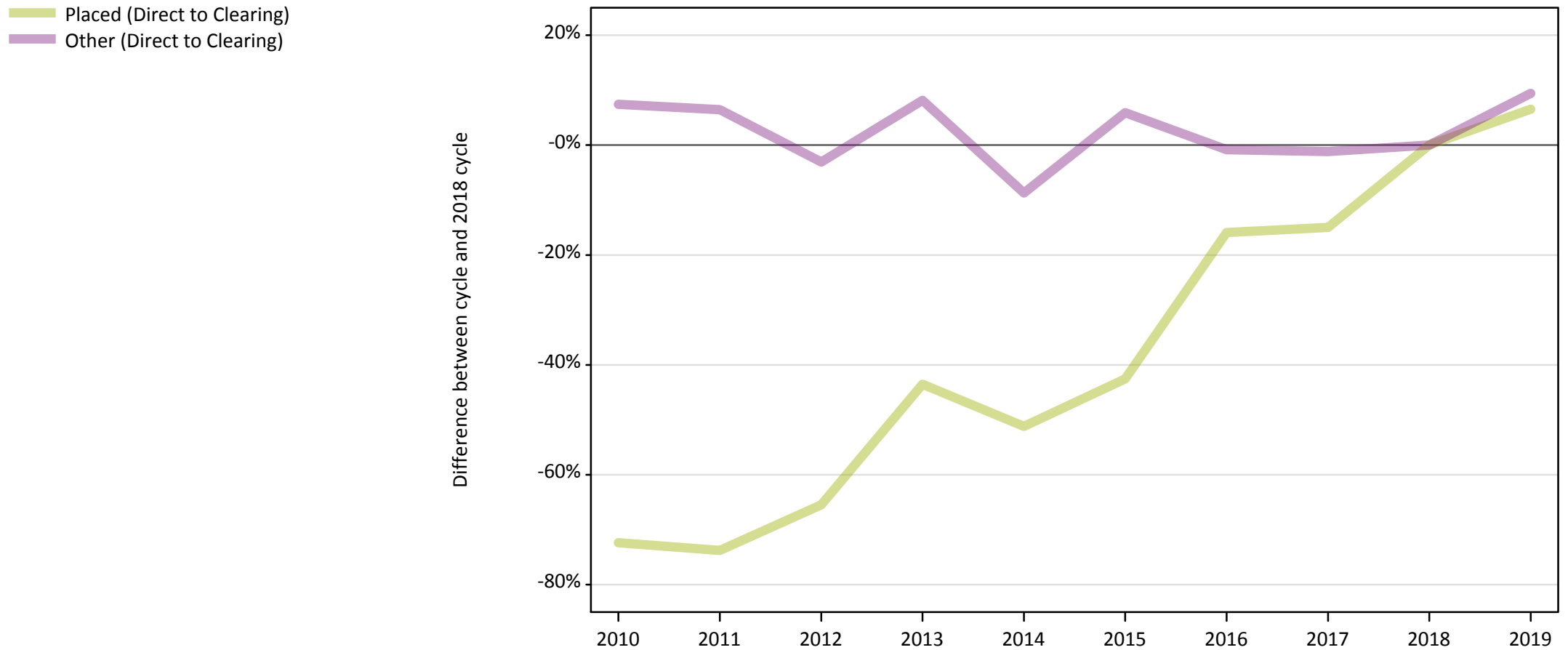
Applicant type	Status	2010	2011	2012	2013	2014	2015	2016	2017	2018	2019
Main scheme	Holding offer	8%	7%	4%	1%	7%	10%	1%	3%	0%	3%
	Free to be placed in Clearing	38%	42%	24%	17%	24%	20%	19%	4%	0%	1%

Note: The percentage change is not recorded in the above table for groups with fewer than 10 unplaced applicants in that cycle or in the 2018 cycle.



### A.15 Direct to Clearing applicants from all domiciles: A level results day

Direct to Clearing: difference between cycle and 2018 cycle



Note: The percentage change is not plotted in the above chart for groups with fewer than 30 placed applicants in any one cycle.

### A.16 Direct to Clearing applicants from all domiciles: A level results day

Direct to Clearing A level results day

Applicant type	Status	2010	2011	2012	2013	2014	2015	2016	2017	2018	2019
Direct to Clearing	Placed (Direct to Clearing)	960	910	1,200	1,960	1,690	1,990	2,920	2,950	3,470	3,690
	Other (Direct to Clearing)	8,560	8,490	7,720	8,620	7,280	8,440	7,900	7,880	7,970	8,720

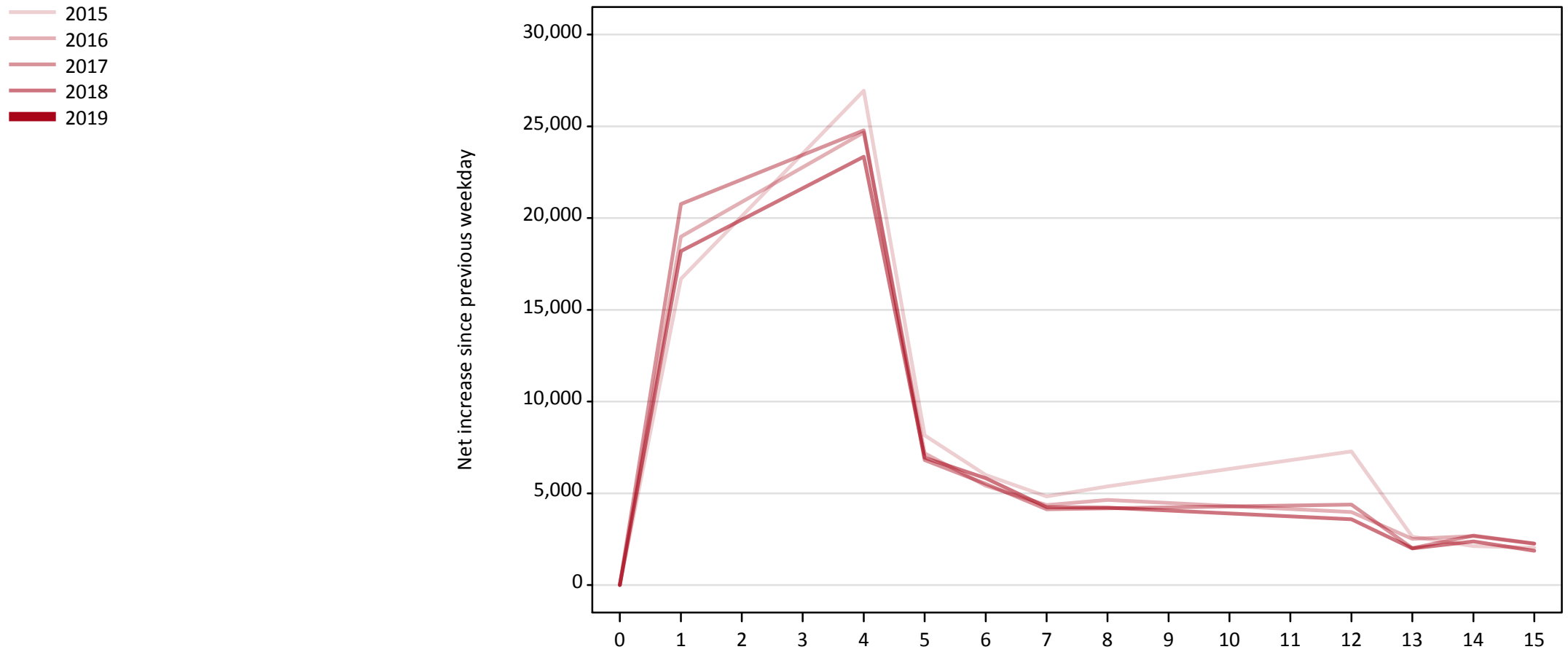
### A.17 Direct to Clearing applicants from all domiciles: A level results day

Direct to Clearing: difference between cycle and 2018 cycle

Applicant type	Status	2010	2011	2012	2013	2014	2015	2016	2017	2018	2019
Direct to Clearing	Placed (Direct to Clearing)	-72%	-74%	-65%	-44%	-51%	-43%	-16%	-15%	0%	7%
	Other (Direct to Clearing)	7%	6%	-3%	8%	-9%	6%	-1%	-1%	0%	9%

Note: The percentage change is not recorded in the above table for groups with fewer than 10 placed applicants in that cycle or in the 2018 cycle.

**A.18 All Placed: Daily net change (from all domiciles)**  
Net increase since previous weekday (2019 cycle up to A level results day)

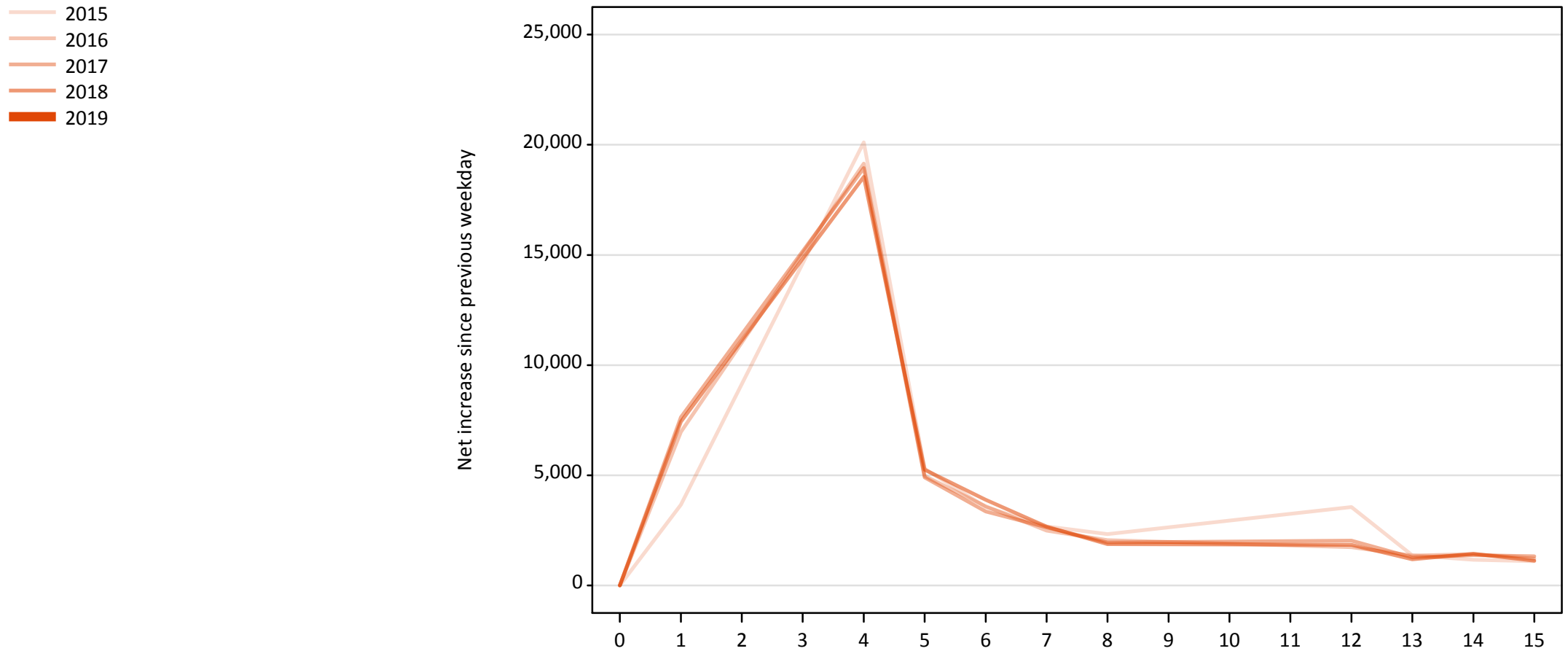


**A.19 All Placed: Daily net change (from all domiciles)**

Net increase since previous weekday (2019 cycle up to A level results day)

Applicant status, days since A level results day		2015	2016	2017	2018	2019
All Placed	0	0	0	0	0	0
	1	16,680	18,990	20,770	18,200	
	4	26,940	24,670	24,790	23,340	
	5	8,160	7,170	6,810	6,940	
	6	6,000	5,410	5,510	5,820	
	7	4,830	4,350	4,140	4,240	
	8	5,370	4,640	4,190	4,220	
	12	7,280	3,980	4,380	3,590	
	13	2,630	2,510	2,010	2,000	
	14	2,120	2,660	2,700	2,370	
	15	2,030	2,250	2,260	1,870	

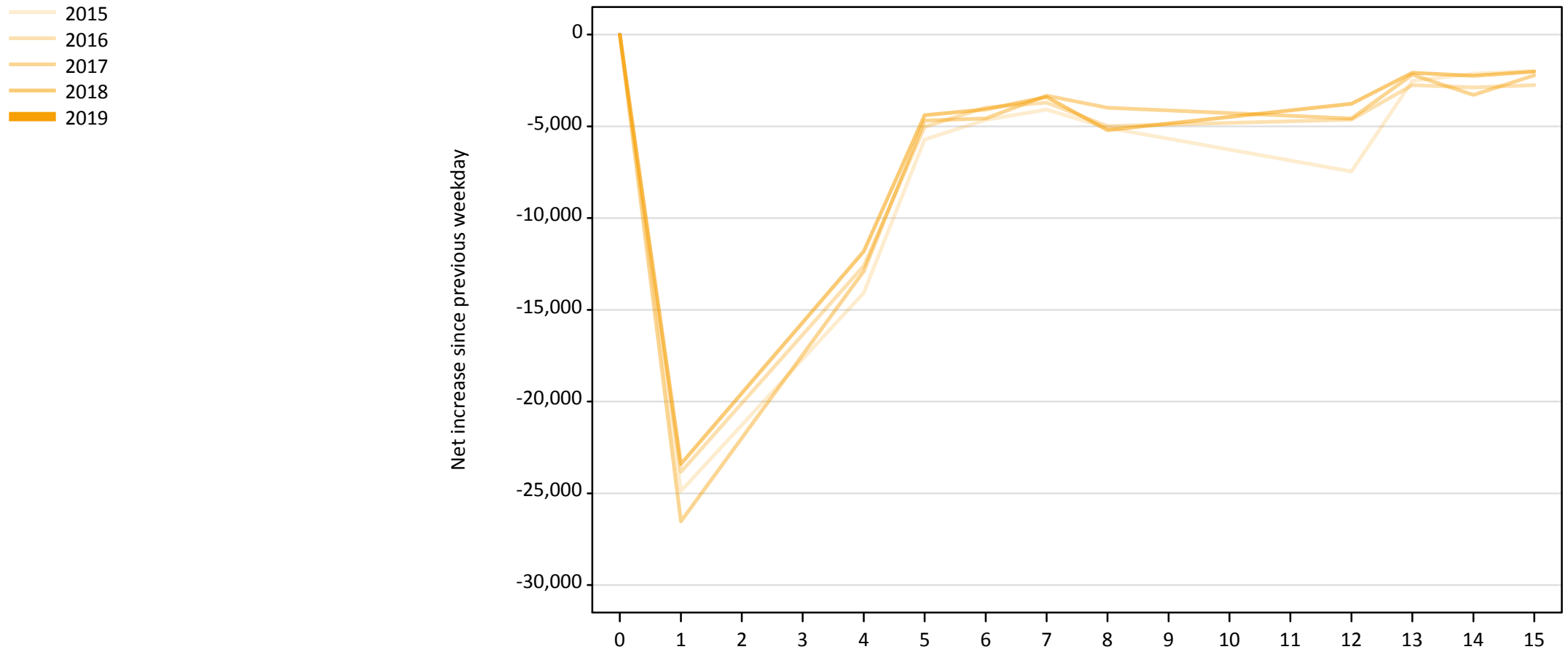
**A.20 Placed through Clearing only: Daily net change (from all domiciles)**  
Net increase since previous weekday (2019 cycle up to A level results day)



**A.21 Placed through Clearing only: Daily net change (from all domiciles)**  
 Net increase since previous weekday (2019 cycle up to A level results day)

Applicant status, days since A level results day		2015	2016	2017	2018	2019
Placed through Clearing only	0	0	0	0	0	0
	1	3,660	6,970	7,640	7,440	
	4	20,110	19,140	18,940	18,550	
	5	5,290	4,960	4,910	5,250	
	6	3,560	3,590	3,360	3,890	
	7	2,680	2,480	2,640	2,660	
	8	2,330	2,050	1,950	1,880	
	12	3,550	1,740	2,030	1,840	
	13	1,370	1,350	1,270	1,190	
	14	1,160	1,420	1,370	1,440	
	15	1,100	1,210	1,320	1,130	

**A.22 Holding Offer: Daily net change (from all domiciles)**  
Net increase since previous weekday (2019 cycle up to A level results day)



### A.23 Holding Offer: Daily net change (from all domiciles)

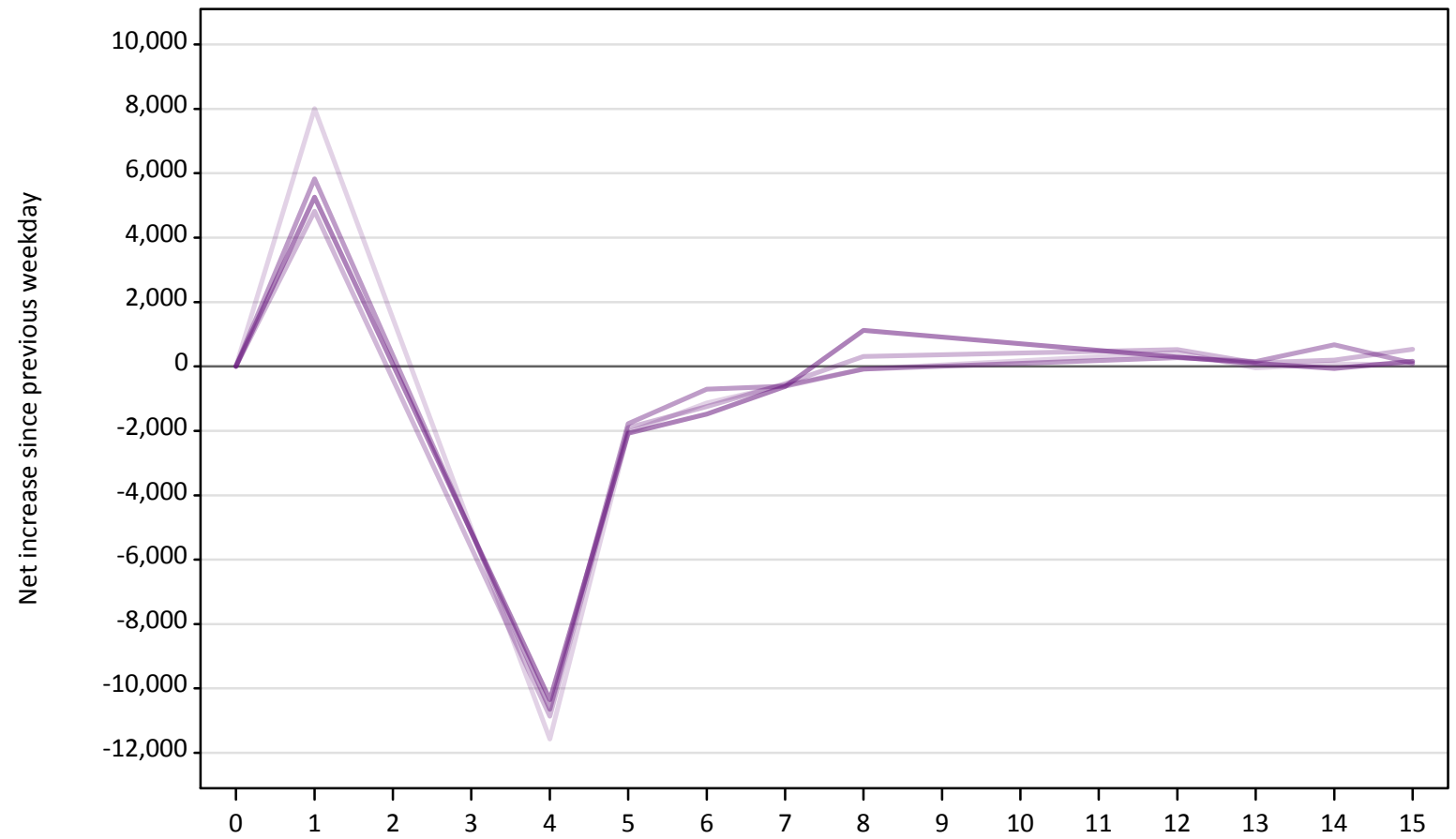
Net increase since previous weekday (2019 cycle up to A level results day)

Applicant status, days since A level results day		2015	2016	2017	2018	2019
Holding Offer	0	0	0	0	0	0
	1	-24,880	-23,840	-26,530	-23,410	
	4	-14,080	-12,600	-12,900	-11,810	
	5	-5,720	-5,030	-4,680	-4,390	
	6	-4,650	-3,970	-4,580	-4,080	
	7	-4,090	-3,700	-3,330	-3,400	
	8	-5,080	-4,990	-3,990	-5,210	
	12	-7,460	-4,640	-4,580	-3,770	
	13	-2,520	-2,760	-2,180	-2,080	
	14	-2,130	-2,880	-3,280	-2,250	
	15	-1,980	-2,760	-2,230	-2,020	



**A.24 Free to be placed in Clearing: Daily net change (from all domiciles)**  
Net increase since previous weekday (2019 cycle up to A level results day)

- 2015
- 2016
- 2017
- 2018
- 2019



**A.25 Free to be placed in Clearing: Daily net change (from all domiciles)**  
 Net increase since previous weekday (2019 cycle up to A level results day)

Applicant status, days since A level results day		2015	2016	2017	2018	2019
Free to be placed in Clearing	0	0	0	0	0	0
	1	8,010	4,820	5,830	5,260	
	4	-11,570	-10,870	-10,650	-10,350	
	5	-2,040	-1,900	-1,780	-2,080	
	6	-1,130	-1,250	-710	-1,480	
	7	-570	-540	-610	-620	
	8	-80	310	-80	1,120	
	12	430	530	280	290	
	13	-40	120	150	90	
	14	80	200	680	-60	
	15	60	530	100	160	