

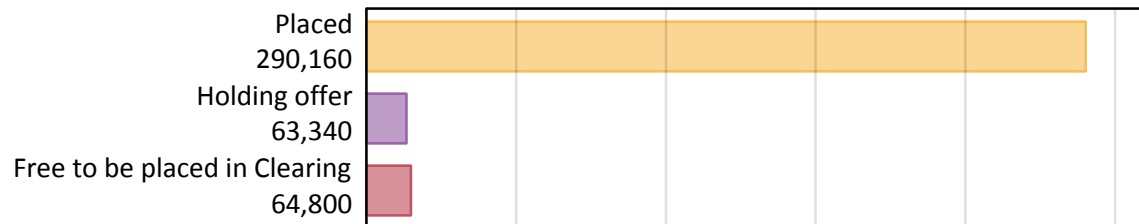
Daily Clearing Analysis: Overview

Analysis at 00:05 on Thursday 15 August 2019 (A level results day)

A.1 Applicants by type and status from England, 2019 cycle

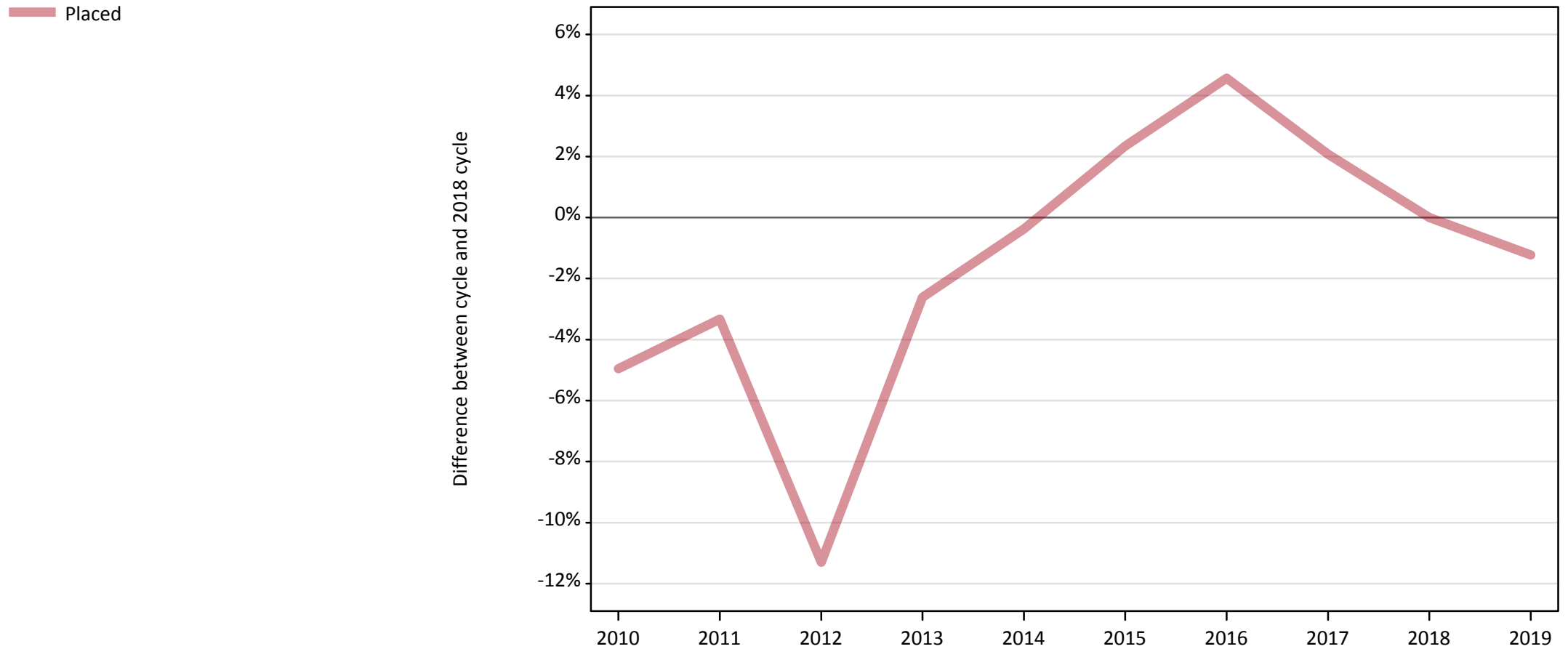
Applicant type	Status	2019
Main scheme	Placed (Clearing)	2,090
	Placed (Adjustment)	0
	Placed (Firm)	254,450
	Placed (Insurance)	22,420
	Placed (Other)	8,420
	Holding offer	63,340
	Free to be placed in Clearing	64,800
Direct to Clearing	Placed (Direct to Clearing)	2,790
	Other (Direct to Clearing)	6,620
All applicants	Placed	290,160

A.2 Summary of applicants who are placed, holding offers or free to be placed in Clearing (England)



A.3 All placed applicants from England: A level results day

All placed applicants: difference between cycle and 2018 cycle



Note: The percentage change is not plotted in the above chart for groups with fewer than 30 placed applicants in any one cycle.

A.4 All placed applicants from England: A level results day

All placed applicants: applicants at A level results day

Applicant type	Status	2010	2011	2012	2013	2014	2015	2016	2017	2018	2019
All applicants	Placed	279,200	283,960	260,570	286,070	292,650	300,630	307,170	299,850	293,750	290,160

A.5 All placed applicants from England: A level results day

All placed applicants: difference between cycle and 2018 cycle

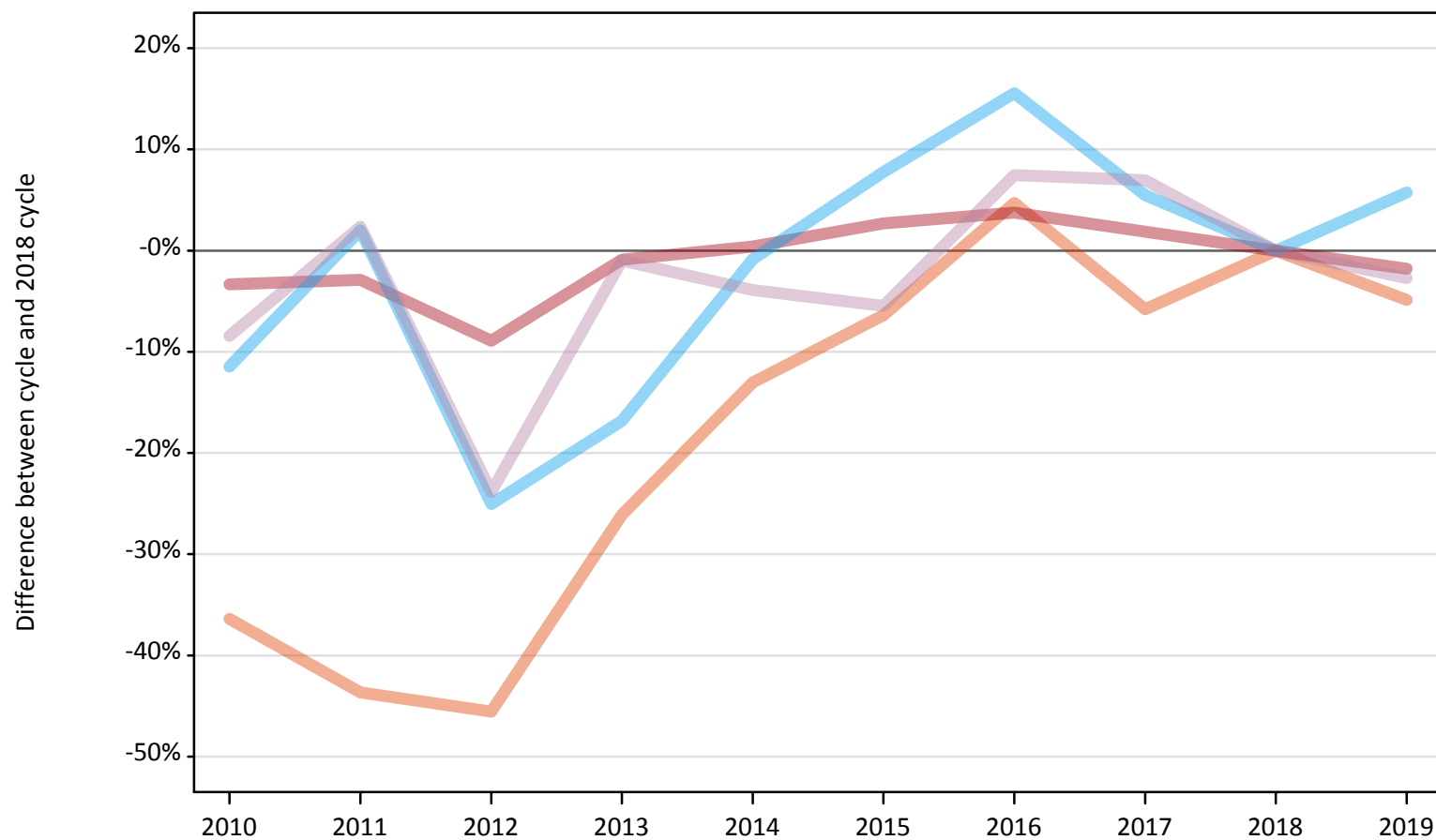
Applicant type	Status	2010	2011	2012	2013	2014	2015	2016	2017	2018	2019
All applicants	Placed	-5%	-3%	-11%	-3%	-0%	2%	5%	2%	0%	-1%

Note: The percentage change is not recorded in the above table for groups with fewer than 10 placed applicants in that cycle or in the 2018 cycle.

A.6 Placed main scheme applicants from England: A level results day

All Main scheme placed routes (excluding Adjustment): difference between cycle and 2018 cycle

- Placed (Clearing)
- Placed (Firm)
- Placed (Insurance)
- Placed (Other)



Note: The percentage change is not plotted in the above chart for groups with fewer than 30 placed applicants in any one cycle.

A.7 Placed main scheme applicants from England: A level results day

All Main scheme placed routes (excluding Adjustment): applicants at A level results day

Applicant type	Status	2010	2011	2012	2013	2014	2015	2016	2017	2018	2019
Main scheme	Placed (Clearing)	1,400	1,240	1,200	1,620	1,910	2,060	2,300	2,070	2,200	2,090
	Placed (Firm)	250,420	251,580	236,000	256,720	260,080	265,990	268,800	263,940	259,050	254,450
	Placed (Insurance)	18,770	21,620	15,890	17,630	21,020	22,840	24,490	22,360	21,200	22,420
	Placed (Other)	7,930	8,860	6,590	8,570	8,320	8,180	9,300	9,260	8,660	8,420

A.8 Placed main scheme applicants from England: A level results day

All Main scheme placed routes (excluding Adjustment): difference between cycle and 2018 cycle

Applicant type	Status	2010	2011	2012	2013	2014	2015	2016	2017	2018	2019
Main scheme	Placed (Clearing)	-36%	-44%	-46%	-26%	-13%	-6%	5%	-6%	0%	-5%
	Placed (Firm)	-3%	-3%	-9%	-1%	0%	3%	4%	2%	0%	-2%
	Placed (Insurance)	-11%	2%	-25%	-17%	-1%	8%	16%	5%	0%	6%
	Placed (Other)	-8%	2%	-24%	-1%	-4%	-5%	7%	7%	0%	-3%

Note: The percentage change is not recorded in the above table for groups with fewer than 10 placed applicants in that cycle or in the 2018 cycle.

A.9 Main scheme applicants placed through adjustment: A level results day

Placed through adjustment: difference between cycle and 2018 cycle

[Analysis on placed by adjustment available from 16 August 2019]

A.10 Main scheme applicants placed through adjustment: A level results day

Placed through adjustment: applicants at A level results day

[Analysis on placed by adjustment available from 16 August 2019]

A.11 Main scheme applicants placed through adjustment: A level results day

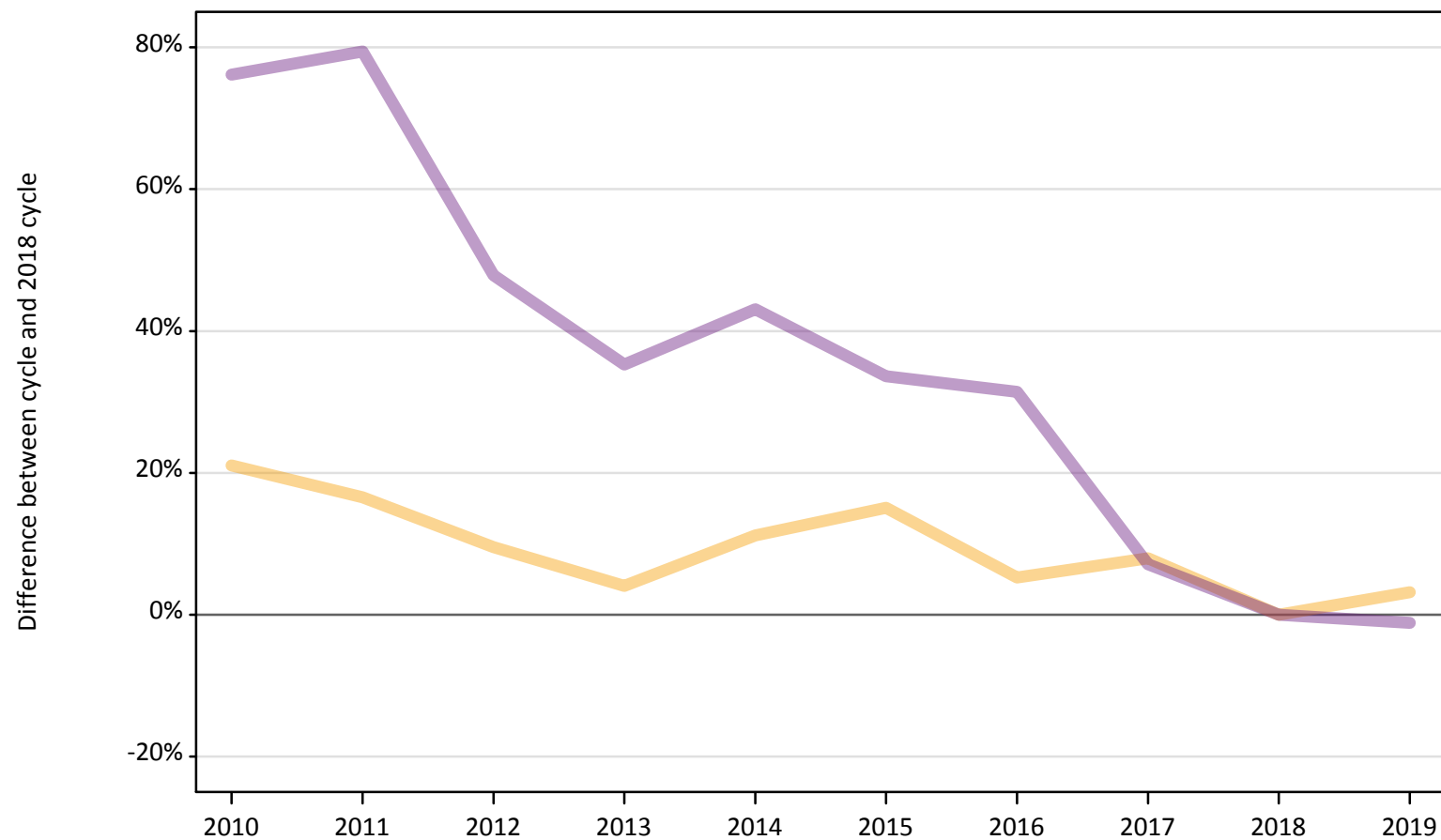
Placed through adjustment: difference between cycle and 2018 cycle

[Analysis on placed by adjustment available from 16 August 2019]

A.12 Main scheme applicants not currently placed from England: A level results day

Applicants in unplaced states: difference between cycle and 2018 cycle

— Holding offer
— Free to be placed in Clearing



Note: The percentage change is not plotted in the above chart for groups with fewer than 30 unplaced applicants in any one cycle.

A.13 Main scheme applicants not currently placed from England: A level results day

Applicants in unplaced states: applicants at A level results day

Applicant type	Status	2010	2011	2012	2013	2014	2015	2016	2017	2018	2019
Main scheme	Holding offer	74,320	71,570	67,250	63,890	68,260	70,660	64,620	66,290	61,400	63,340
	Free to be placed in Clearing	115,460	117,610	96,900	88,650	93,760	87,570	86,140	70,210	65,540	64,800

A.14 Main scheme applicants not currently placed from England: A level results day

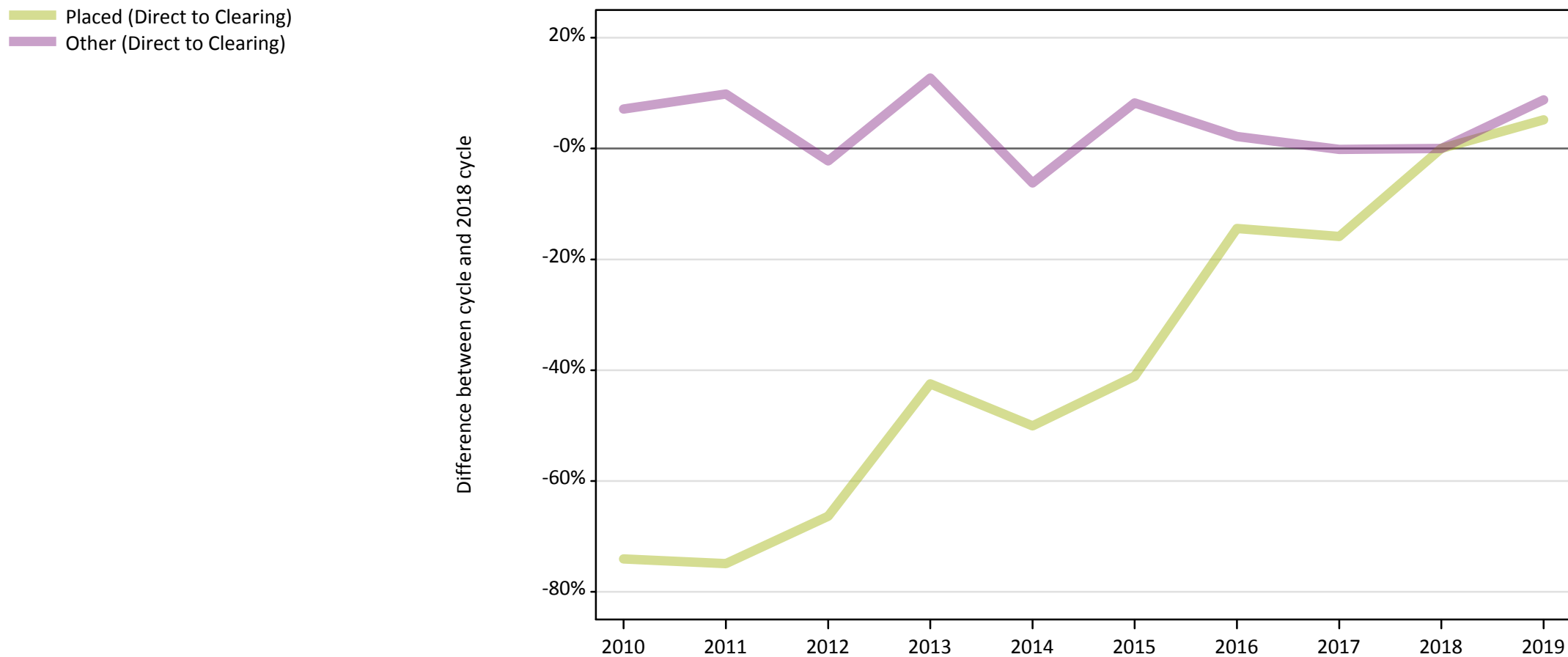
Applicants in unplaced states: difference between cycle and 2018 cycle

Applicant type	Status	2010	2011	2012	2013	2014	2015	2016	2017	2018	2019
Main scheme	Holding offer	21%	17%	10%	4%	11%	15%	5%	8%	0%	3%
	Free to be placed in Clearing	76%	79%	48%	35%	43%	34%	31%	7%	0%	-1%

Note: The percentage change is not recorded in the above table for groups with fewer than 10 unplaced applicants in that cycle or in the 2018 cycle.

A.15 Direct to Clearing applicants from England: A level results day

Direct to Clearing: difference between cycle and 2018 cycle



Note: The percentage change is not plotted in the above chart for groups with fewer than 30 placed applicants in any one cycle.

A.16 Direct to Clearing applicants from England: A level results day

Direct to Clearing A level results day

Applicant type	Status	2010	2011	2012	2013	2014	2015	2016	2017	2018	2019
Direct to Clearing	Placed (Direct to Clearing)	690	670	890	1,530	1,320	1,560	2,270	2,230	2,650	2,790
	Other (Direct to Clearing)	6,520	6,690	5,950	6,860	5,710	6,590	6,220	6,080	6,090	6,620

A.17 Direct to Clearing applicants from England: A level results day

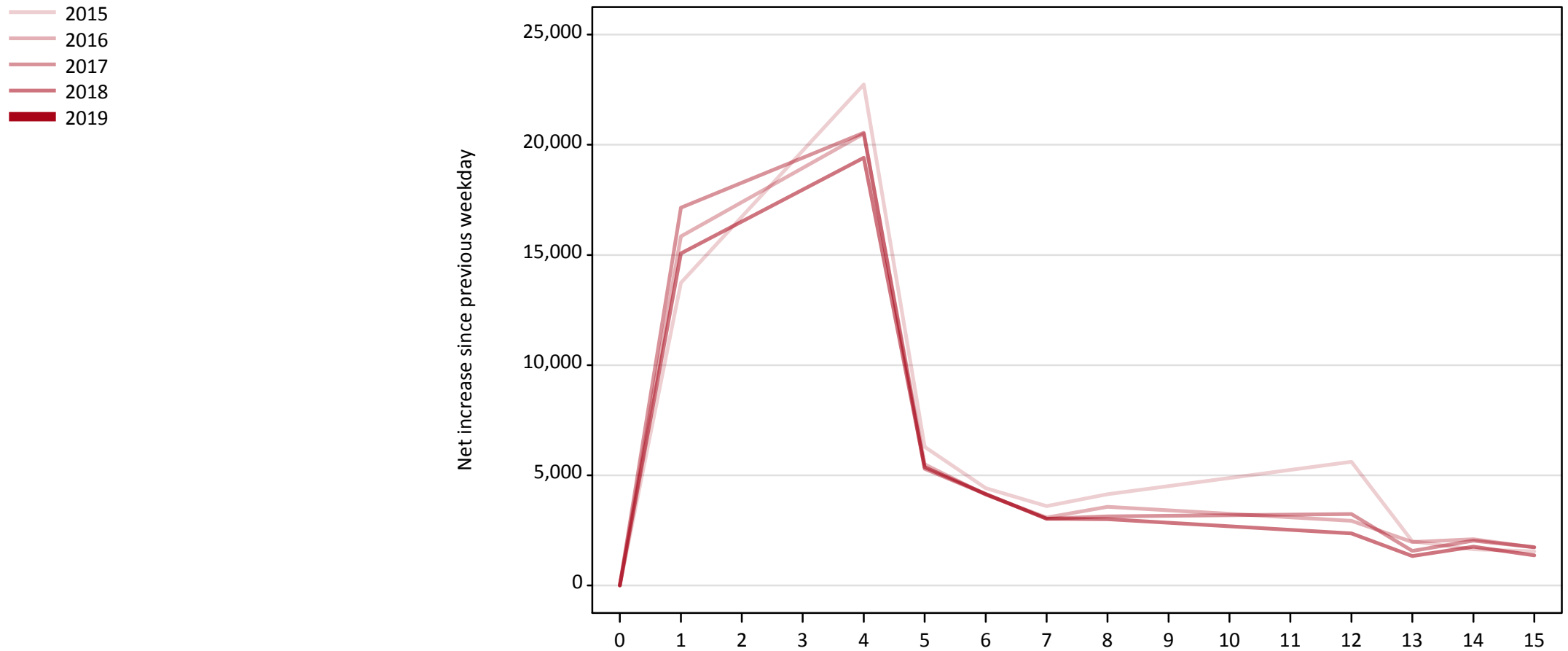
Direct to Clearing: difference between cycle and 2018 cycle

Applicant type	Status	2010	2011	2012	2013	2014	2015	2016	2017	2018	2019
Direct to Clearing	Placed (Direct to Clearing)	-74%	-75%	-66%	-42%	-50%	-41%	-14%	-16%	0%	5%
	Other (Direct to Clearing)	7%	10%	-2%	13%	-6%	8%	2%	-0%	0%	9%

Note: The percentage change is not recorded in the above table for groups with fewer than 10 placed applicants in that cycle or in the 2018 cycle.

A.18 All Placed: Daily net change (from England)

Net increase since previous weekday (2019 cycle up to A level results day)

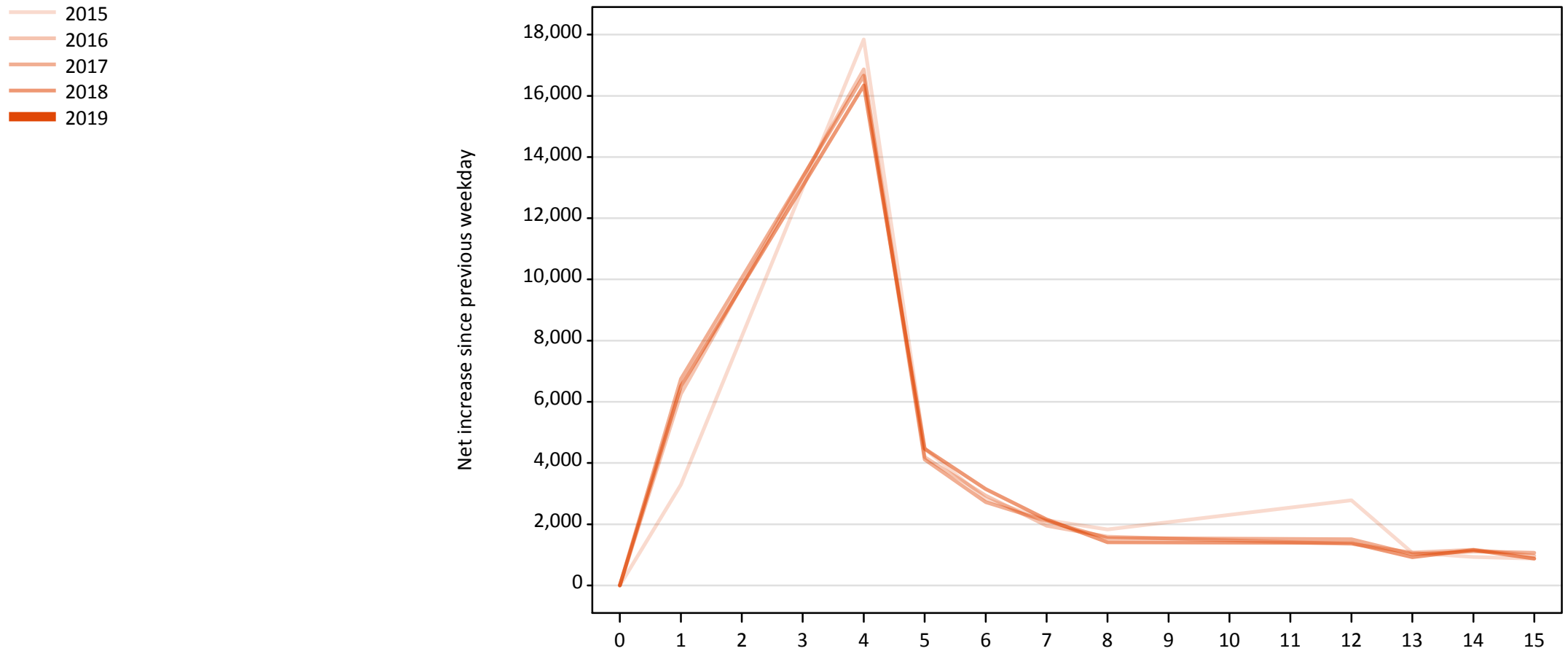


A.19 All Placed: Daily net change (from England)

Net increase since previous weekday (2019 cycle up to A level results day)

Applicant status, days since A level results day	2015	2016	2017	2018	2019
All Placed	0	0	0	0	0
	1	13,730	15,840	17,150	15,070
	4	22,730	20,500	20,540	19,410
	5	6,300	5,500	5,300	5,370
	6	4,410	4,120	4,140	4,150
	7	3,600	3,080	3,030	3,030
	8	4,140	3,570	3,130	3,010
	12	5,610	2,940	3,240	2,360
	13	2,000	1,970	1,560	1,340
	14	1,640	2,100	2,030	1,760
	15	1,540	1,730	1,740	1,360

A.20 Placed through Clearing only: Daily net change (from England)
Net increase since previous weekday (2019 cycle up to A level results day)



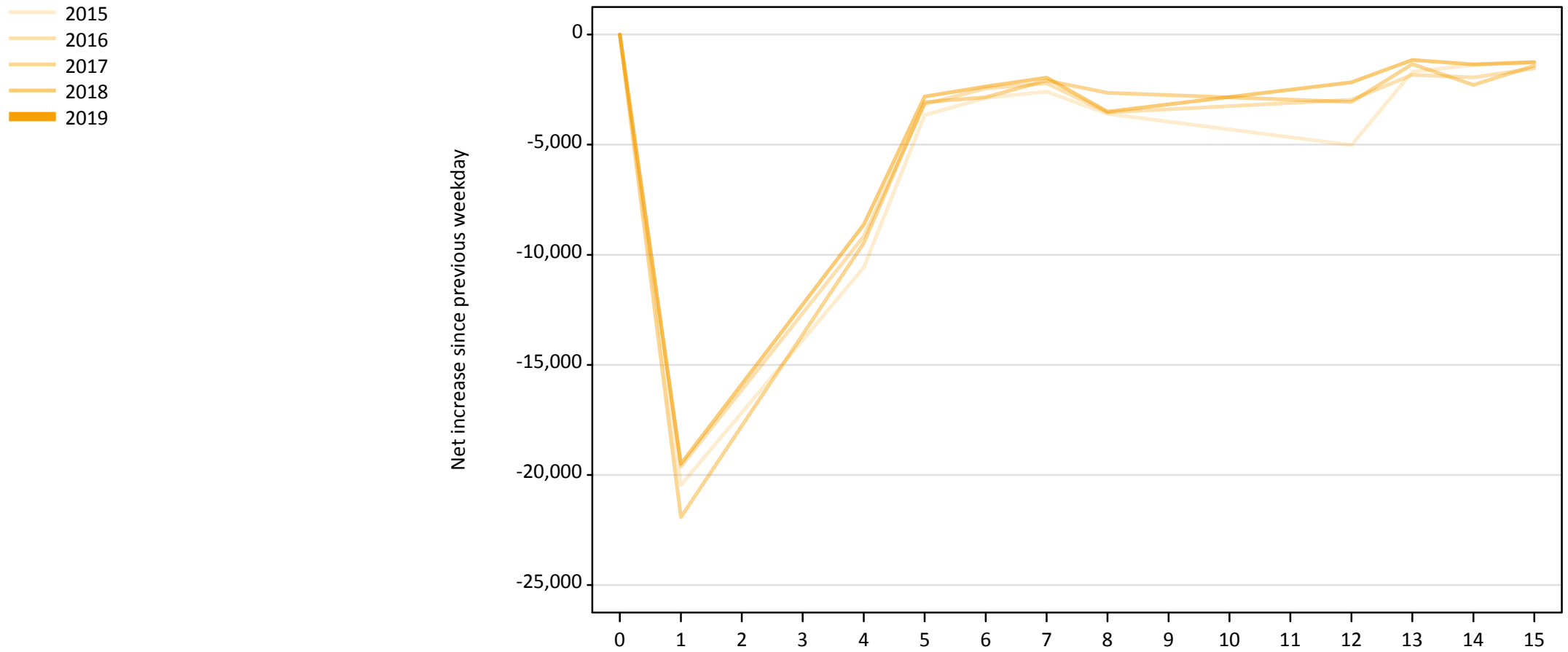
A.21 Placed through Clearing only: Daily net change (from England)

Net increase since previous weekday (2019 cycle up to A level results day)

Applicant status, days since A level results day		2015	2016	2017	2018	2019
Placed through Clearing only	0	0	0	0	0	0
	1	3,300	6,260	6,740	6,510	
	4	17,850	16,870	16,660	16,340	
	5	4,470	4,190	4,120	4,470	
	6	2,830	2,940	2,720	3,150	
	7	2,140	1,950	2,100	2,160	
	8	1,830	1,590	1,540	1,410	
	12	2,790	1,360	1,510	1,390	
	13	1,060	1,080	1,020	920	
	14	930	1,160	1,120	1,160	
	15	880	970	1,060	880	

A.22 Holding Offer: Daily net change (from England)

Net increase since previous weekday (2019 cycle up to A level results day)



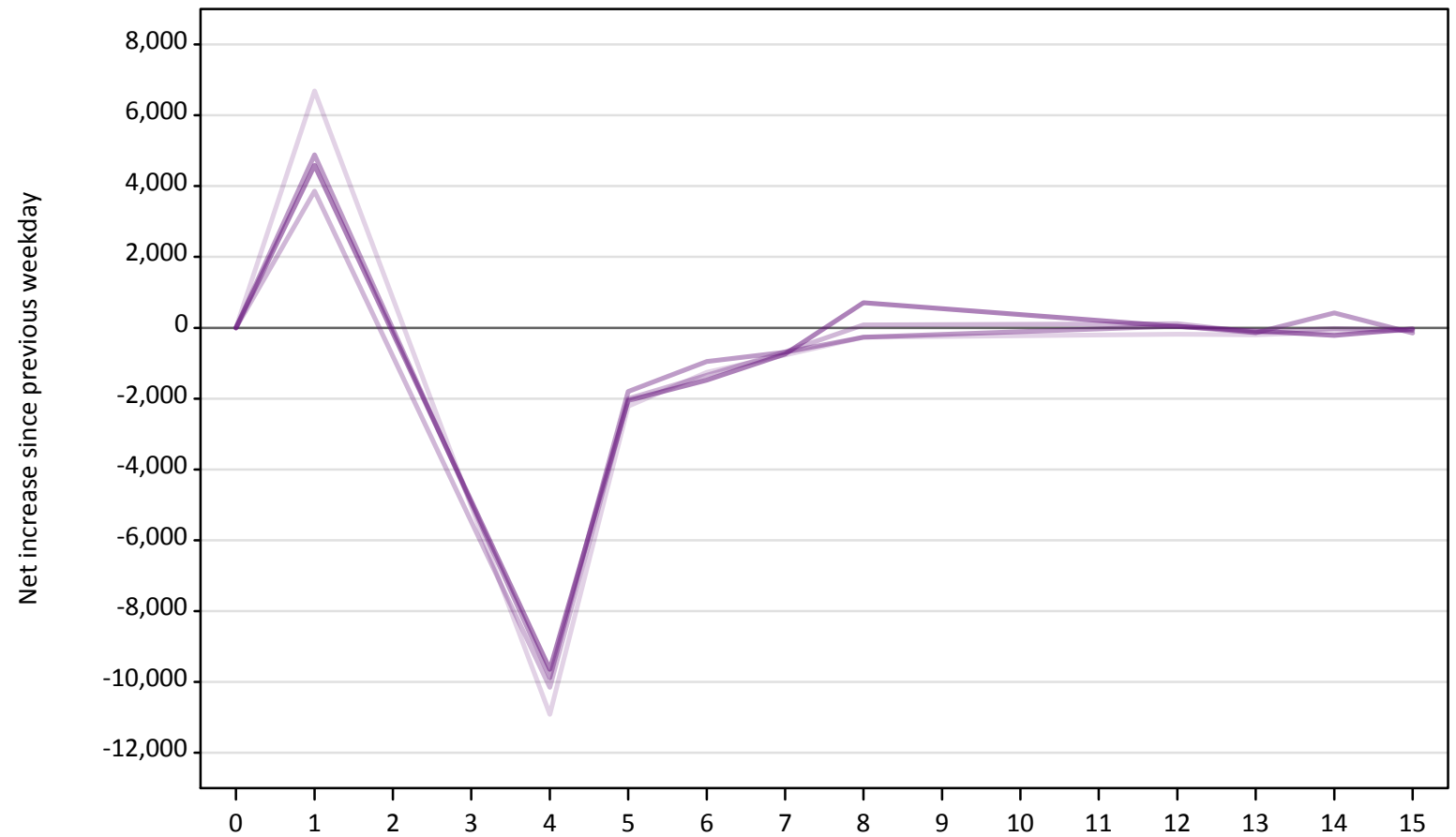
A.23 Holding Offer: Daily net change (from England)

Net increase since previous weekday (2019 cycle up to A level results day)

Applicant status, days since A level results day		2015	2016	2017	2018	2019
Holding Offer	0	0	0	0	0	0
	1	-20,460	-19,620	-21,920	-19,500	
	4	-10,580	-9,160	-9,470	-8,630	
	5	-3,660	-3,160	-3,060	-2,820	
	6	-2,870	-2,450	-2,840	-2,360	
	7	-2,590	-2,210	-2,080	-1,960	
	8	-3,590	-3,540	-2,650	-3,510	
	12	-5,010	-2,970	-3,060	-2,170	
	13	-1,690	-1,830	-1,340	-1,160	
	14	-1,370	-1,950	-2,290	-1,360	
	15	-1,280	-1,530	-1,420	-1,240	

A.24 Free to be placed in Clearing: Daily net change (from England)
Net increase since previous weekday (2019 cycle up to A level results day)

- 2015
- 2016
- 2017
- 2018
- 2019



A.25 Free to be placed in Clearing: Daily net change (from England)

Net increase since previous weekday (2019 cycle up to A level results day)

Applicant status, days since A level results day		2015	2016	2017	2018	2019
Free to be placed in Clearing	0	0	0	0	0	0
	1	6,690	3,860	4,890	4,590	
	4	-10,920	-10,160	-9,880	-9,640	
	5	-2,220	-2,000	-1,800	-2,050	
	6	-1,260	-1,340	-950	-1,480	
	7	-770	-680	-690	-740	
	8	-270	80	-270	710	
	12	-190	110	50	40	
	13	-200	-130	-140	-90	
	14	-120	-20	420	-220	
	15	-70	-70	-150	-30	