

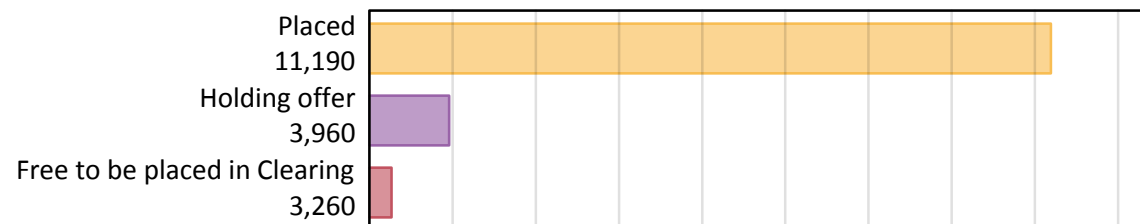
# Daily Clearing Analysis: Overview

Analysis at 00:05 on Thursday 15 August 2019 (A level results day)

## A.1 Applicants by type and status from Northern Ireland, 2019 cycle

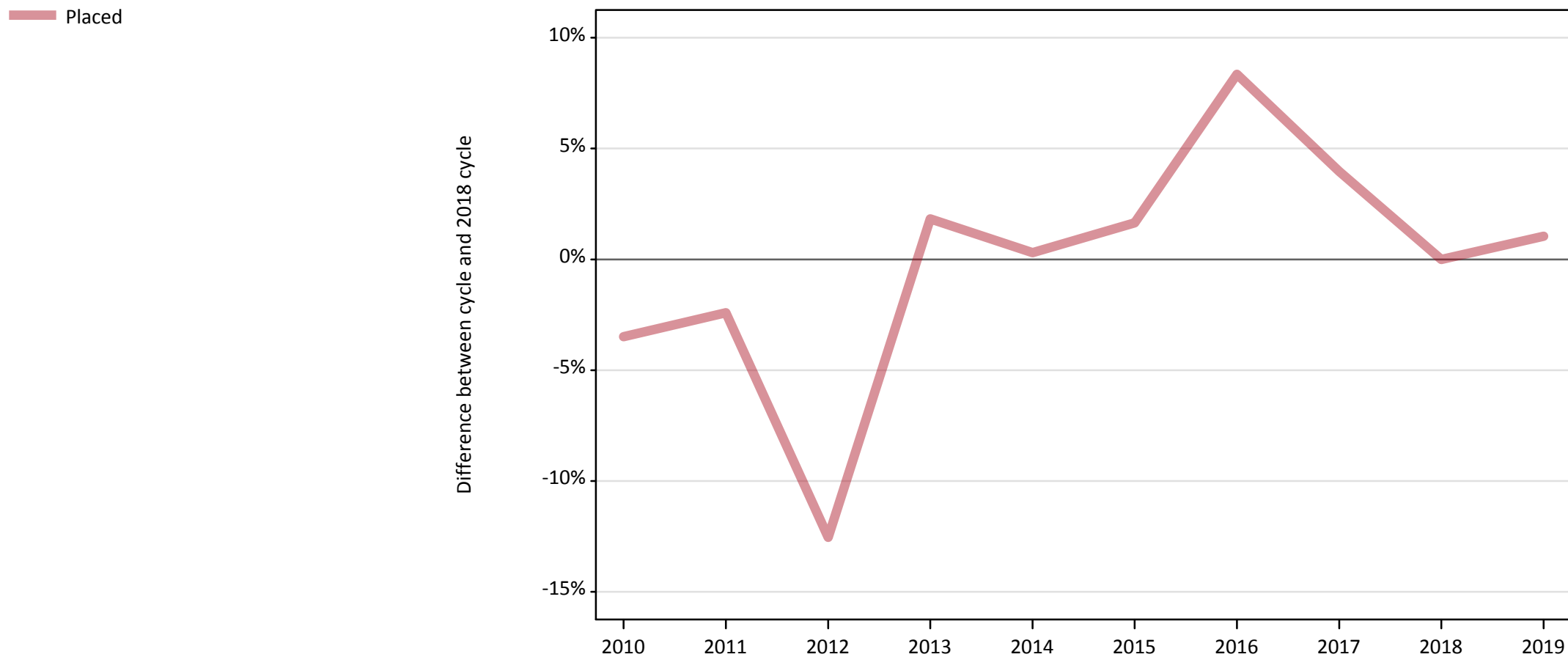
Applicant type	Status	2019
Main scheme	Placed (Clearing)	50
	Placed (Adjustment)	0
	Placed (Firm)	10,320
	Placed (Insurance)	670
	Placed (Other)	120
	Holding offer	3,960
	Free to be placed in Clearing	3,260
Direct to Clearing	Placed (Direct to Clearing)	30
	Other (Direct to Clearing)	70
All applicants	Placed	11,190

## A.2 Summary of applicants who are placed, holding offers or free to be placed in Clearing ( Northern Ireland )



### A.3 All placed applicants from Northern Ireland: A level results day

All placed applicants: difference between cycle and 2018 cycle



Note: The percentage change is not plotted in the above chart for groups with fewer than 30 placed applicants in any one cycle.

#### A.4 All placed applicants from Northern Ireland: A level results day

All placed applicants: applicants at A level results day

Applicant type	Status	2010	2011	2012	2013	2014	2015	2016	2017	2018	2019
All applicants	Placed	10,690	10,810	9,690	11,280	11,110	11,260	12,000	11,520	11,080	11,190

#### A.5 All placed applicants from Northern Ireland: A level results day

All placed applicants: difference between cycle and 2018 cycle

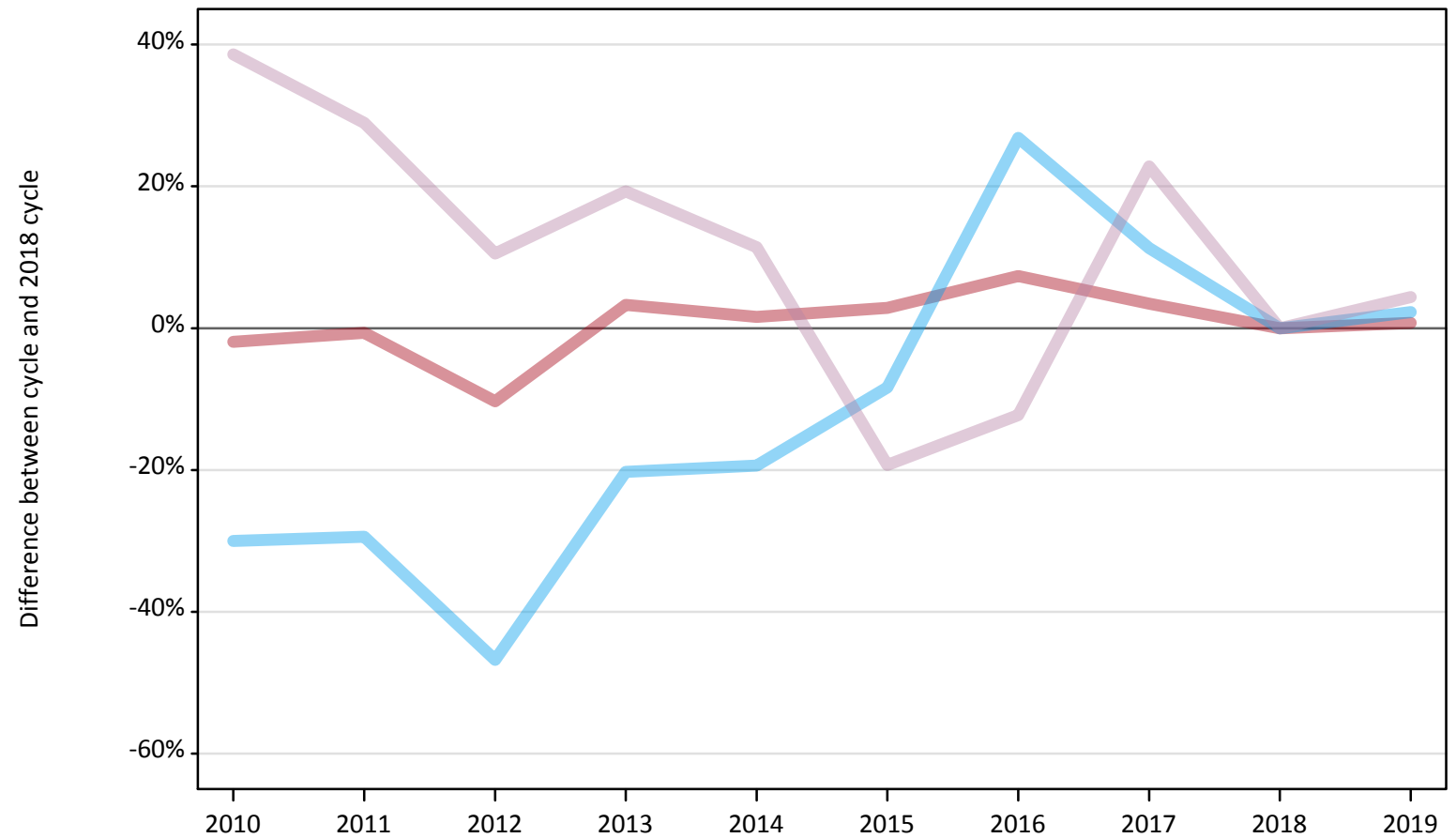
Applicant type	Status	2010	2011	2012	2013	2014	2015	2016	2017	2018	2019
All applicants	Placed	-3%	-2%	-13%	2%	0%	2%	8%	4%	0%	1%

Note: The percentage change is not recorded in the above table for groups with fewer than 10 placed applicants in that cycle or in the 2018 cycle.

## A.6 Placed main scheme applicants from Northern Ireland: A level results day

All Main scheme placed routes (excluding Adjustment): difference between cycle and 2018 cycle

- Placed (Clearing)
- Placed (Firm)
- Placed (Insurance)
- Placed (Other)



Note: The percentage change is not plotted in the above chart for groups with fewer than 30 placed applicants in any one cycle.

### A.7 Placed main scheme applicants from Northern Ireland: A level results day

All Main scheme placed routes (excluding Adjustment): applicants at A level results day

Applicant type	Status	2010	2011	2012	2013	2014	2015	2016	2017	2018	2019
Main scheme	Placed (Clearing)	10	10	10	20	40	20	50	30	40	50
	Placed (Firm)	10,050	10,180	9,200	10,590	10,410	10,540	11,000	10,610	10,250	10,320
	Placed (Insurance)	460	460	350	520	530	600	830	730	660	670
	Placed (Other)	160	150	130	140	130	90	100	140	110	120

### A.8 Placed main scheme applicants from Northern Ireland: A level results day

All Main scheme placed routes (excluding Adjustment): difference between cycle and 2018 cycle

Applicant type	Status	2010	2011	2012	2013	2014	2015	2016	2017	2018	2019
Main scheme	Placed (Clearing)	-71%	-66%	-66%	-41%	-12%	-56%	29%	-29%	0%	24%
	Placed (Firm)	-2%	-1%	-10%	3%	2%	3%	7%	3%	0%	1%
	Placed (Insurance)	-30%	-29%	-47%	-20%	-19%	-8%	27%	11%	0%	2%
	Placed (Other)	39%	29%	11%	19%	11%	-19%	-12%	23%	0%	4%

Note: The percentage change is not recorded in the above table for groups with fewer than 10 placed applicants in that cycle or in the 2018 cycle.

**A.9 Main scheme applicants placed through adjustment: A level results day**

Placed through adjustment: difference between cycle and 2018 cycle

**[Analysis on placed by adjustment available from 16 August 2019]**

**A.10 Main scheme applicants placed through adjustment: A level results day**

Placed through adjustment: applicants at A level results day

**[Analysis on placed by adjustment available from 16 August 2019]**

**A.11 Main scheme applicants placed through adjustment: A level results day**

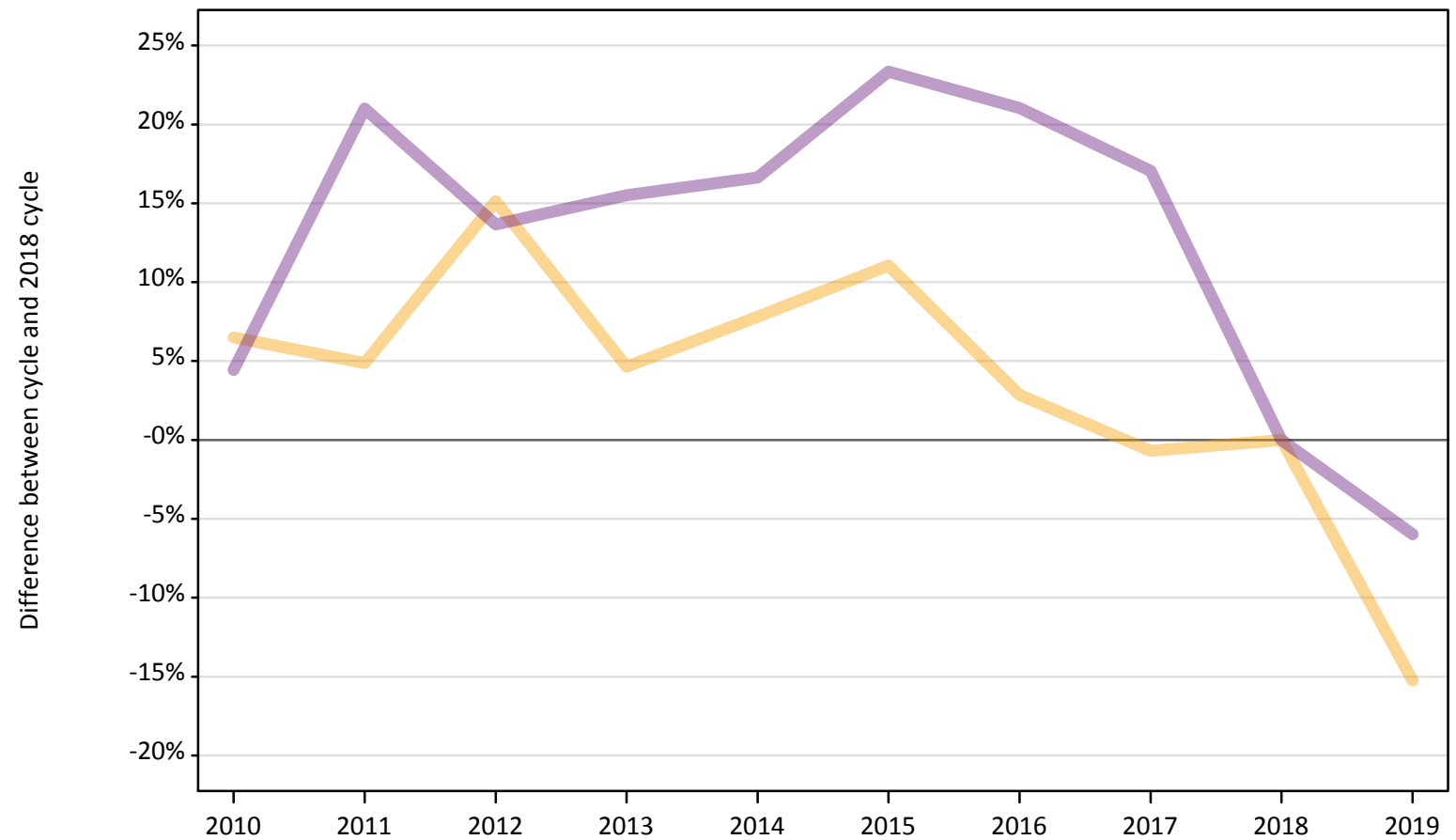
Placed through adjustment: difference between cycle and 2018 cycle

**[Analysis on placed by adjustment available from 16 August 2019]**

## A.12 Main scheme applicants not currently placed from Northern Ireland: A level results day

Applicants in unplaced states: difference between cycle and 2018 cycle

— Holding offer  
— Free to be placed in Clearing



Note: The percentage change is not plotted in the above chart for groups with fewer than 30 unplaced applicants in any one cycle.

### A.13 Main scheme applicants not currently placed from Northern Ireland: A level results day

Applicants in unplaced states: applicants at A level results day

Applicant type	Status	2010	2011	2012	2013	2014	2015	2016	2017	2018	2019
Main scheme	Holding offer	4,970	4,900	5,380	4,890	5,040	5,190	4,800	4,640	4,670	3,960
	Free to be placed in Clearing	3,620	4,200	3,940	4,010	4,050	4,280	4,200	4,060	3,470	3,260

### A.14 Main scheme applicants not currently placed from Northern Ireland: A level results day

Applicants in unplaced states: difference between cycle and 2018 cycle

Applicant type	Status	2010	2011	2012	2013	2014	2015	2016	2017	2018	2019
Main scheme	Holding offer	6%	5%	15%	5%	8%	11%	3%	-1%	0%	-15%
	Free to be placed in Clearing	4%	21%	14%	16%	17%	23%	21%	17%	0%	-6%

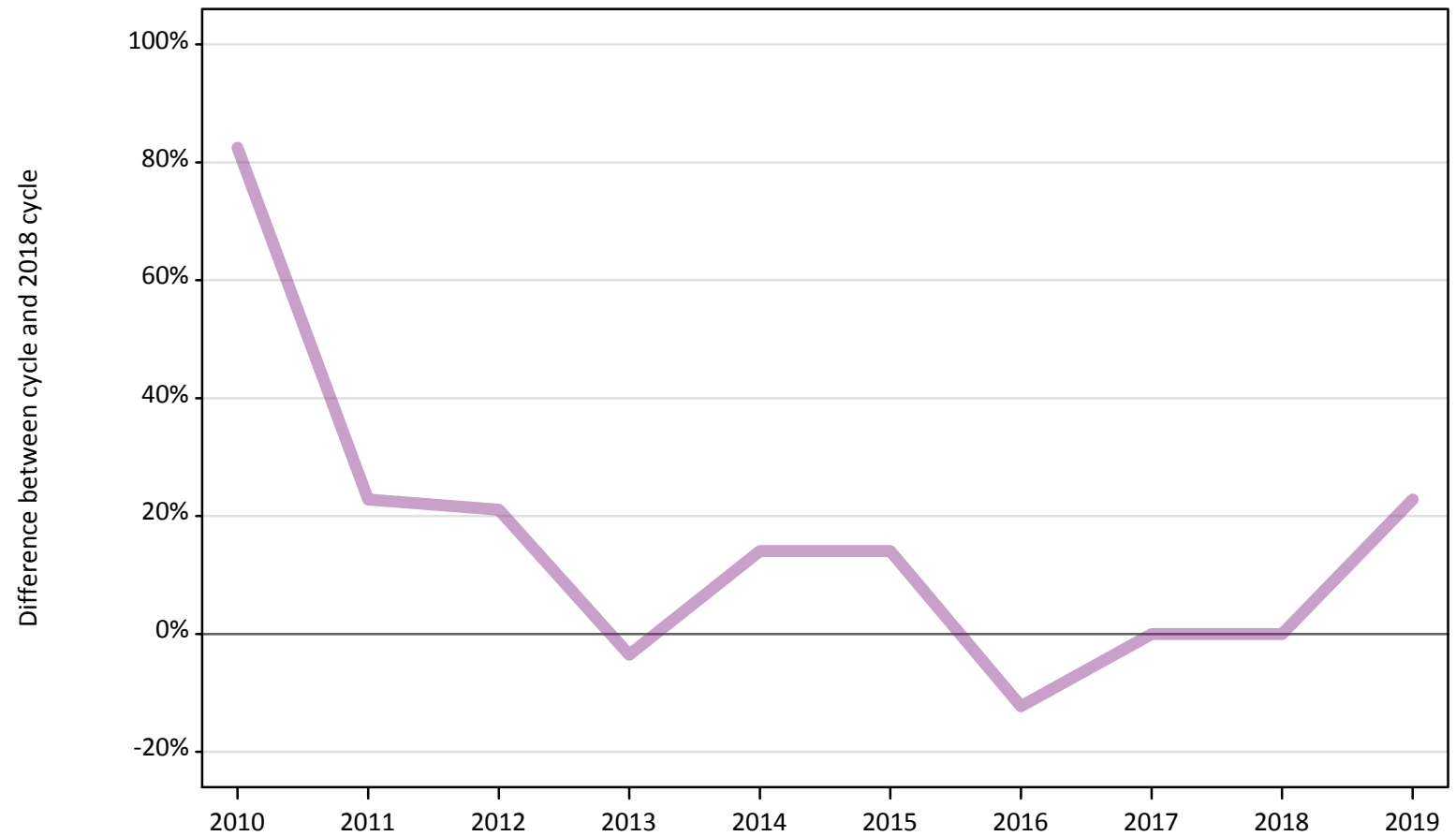
Note: The percentage change is not recorded in the above table for groups with fewer than 10 unplaced applicants in that cycle or in the 2018 cycle.



### A.15 Direct to Clearing applicants from Northern Ireland: A level results day

Direct to Clearing: difference between cycle and 2018 cycle

- Placed (Direct to Clearing)
- Other (Direct to Clearing)



Note: The percentage change is not plotted in the above chart for groups with fewer than 30 placed applicants in any one cycle.

### A.16 Direct to Clearing applicants from Northern Ireland: A level results day

Direct to Clearing A level results day

Applicant type	Status	2010	2011	2012	2013	2014	2015	2016	2017	2018	2019
Direct to Clearing	Placed (Direct to Clearing)	10	10	10	10	10	10	20	10	20	30
	Other (Direct to Clearing)	100	70	70	60	70	70	50	60	60	70

### A.17 Direct to Clearing applicants from Northern Ireland: A level results day

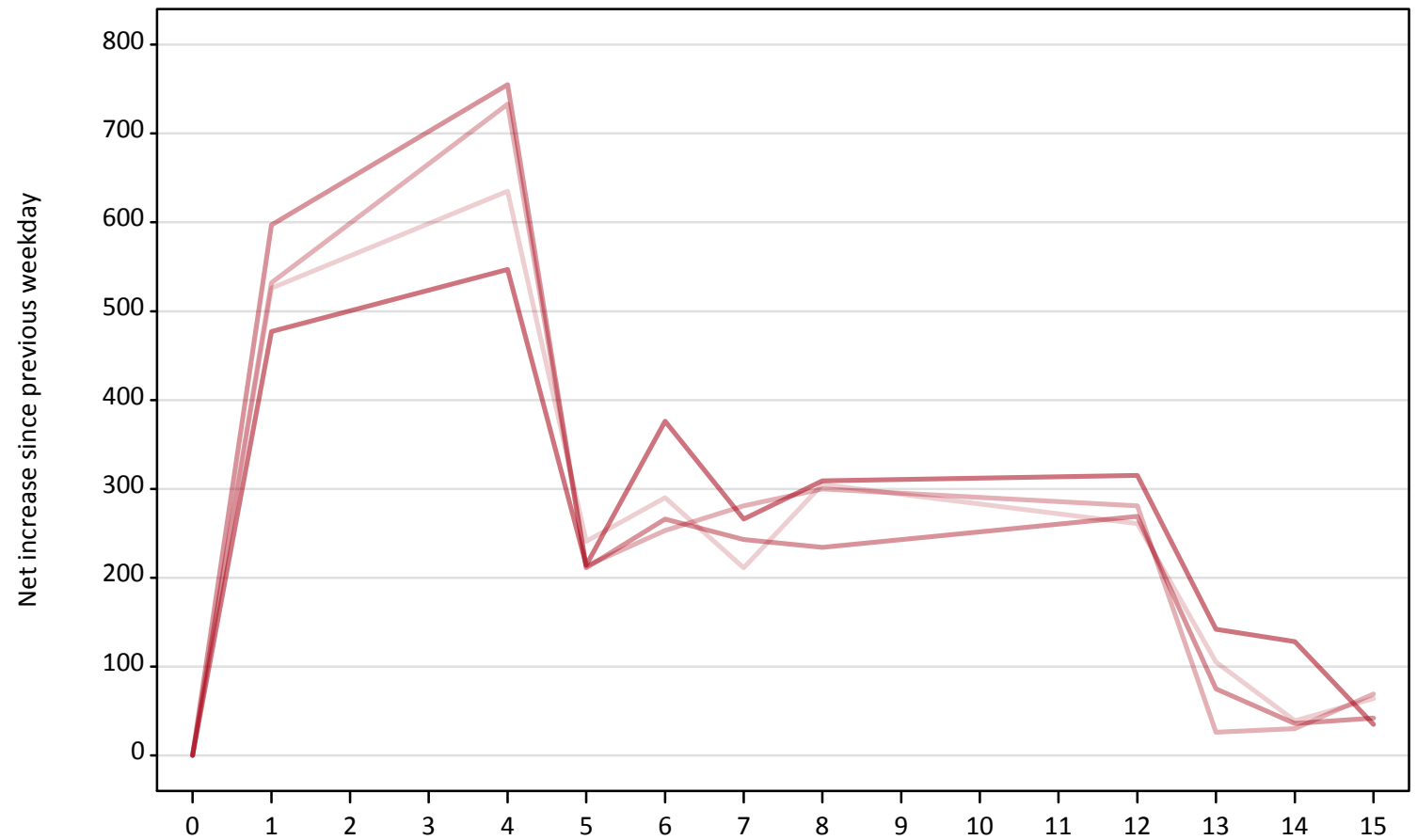
Direct to Clearing: difference between cycle and 2018 cycle

Applicant type	Status	2010	2011	2012	2013	2014	2015	2016	2017	2018	2019
Direct to Clearing	Placed (Direct to Clearing)							-6%	-24%	0%	65%
	Other (Direct to Clearing)	82%	23%	21%	-4%	14%	14%	-12%	0%	0%	23%

Note: The percentage change is not recorded in the above table for groups with fewer than 10 placed applicants in that cycle or in the 2018 cycle.

**A.18 All Placed: Daily net change (from Northern Ireland)**  
Net increase since previous weekday (2019 cycle up to A level results day)

- 2015
- 2016
- 2017
- 2018
- 2019



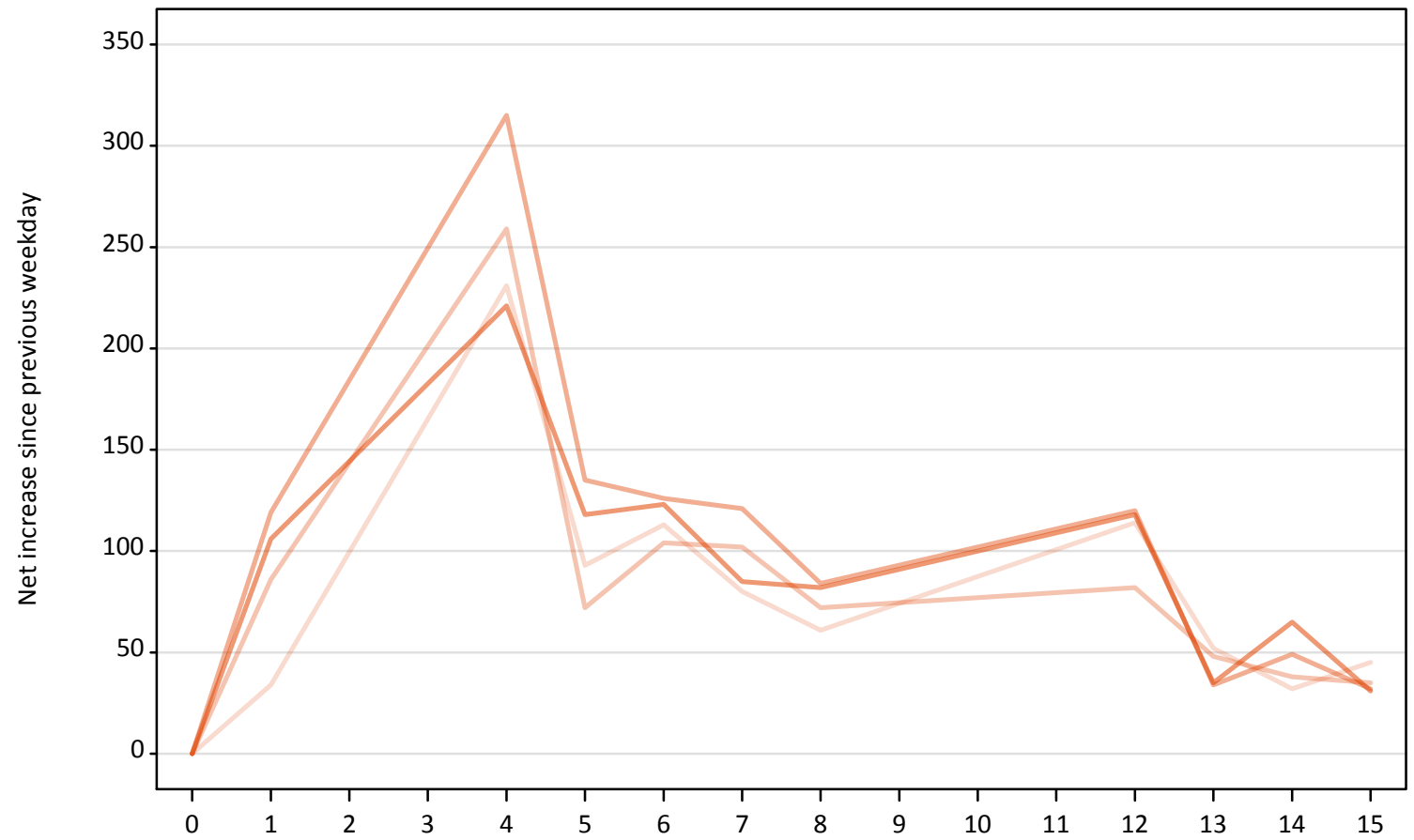
**A.19 All Placed: Daily net change (from Northern Ireland)**

Net increase since previous weekday (2019 cycle up to A level results day)

Applicant status, days since A level results day		2015	2016	2017	2018	2019
All Placed	0	0	0	0	0	0
	1	530	530	600	480	
	4	640	730	760	550	
	5	240	210	210	210	
	6	290	250	270	380	
	7	210	280	240	270	
	8	310	300	230	310	
	12	260	280	270	320	
	13	110	30	80	140	
	14	40	30	40	130	
	15	60	70	40	40	

**A.20 Placed through Clearing only: Daily net change (from Northern Ireland)**  
Net increase since previous weekday (2019 cycle up to A level results day)

- 2015
- 2016
- 2017
- 2018
- 2019



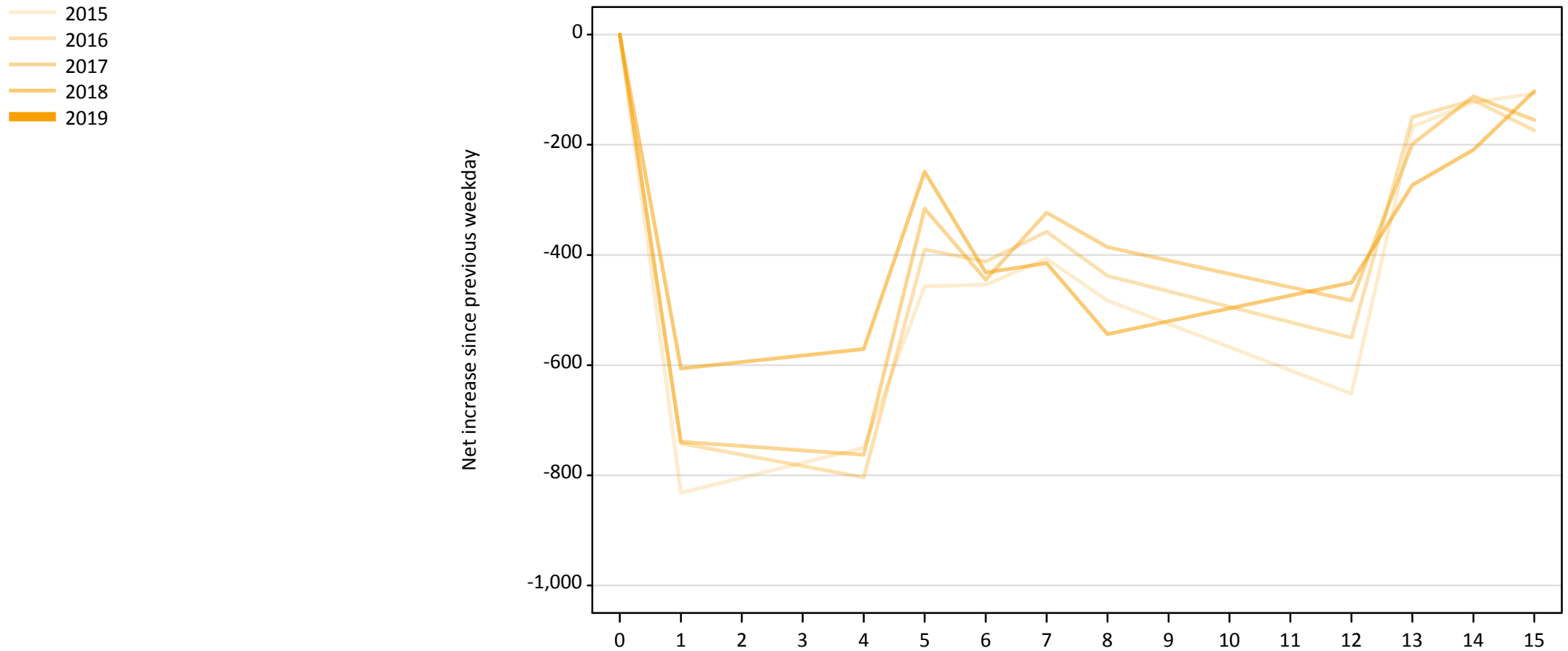
**A.21 Placed through Clearing only: Daily net change (from Northern Ireland)**

Net increase since previous weekday (2019 cycle up to A level results day)

Applicant status, days since A level results day		2015	2016	2017	2018	2019
Placed through Clearing only	0	0	0	0	0	0
	1	30	90	120	110	
	4	230	260	320	220	
	5	90	70	140	120	
	6	110	100	130	120	
	7	80	100	120	90	
	8	60	70	80	80	
	12	110	80	120	120	
	13	50	50	30	40	
	14	30	40	50	70	
	15	50	40	30	30	

### A.22 Holding Offer: Daily net change (from Northern Ireland)

Net increase since previous weekday (2019 cycle up to A level results day)



### A.23 Holding Offer: Daily net change (from Northern Ireland)

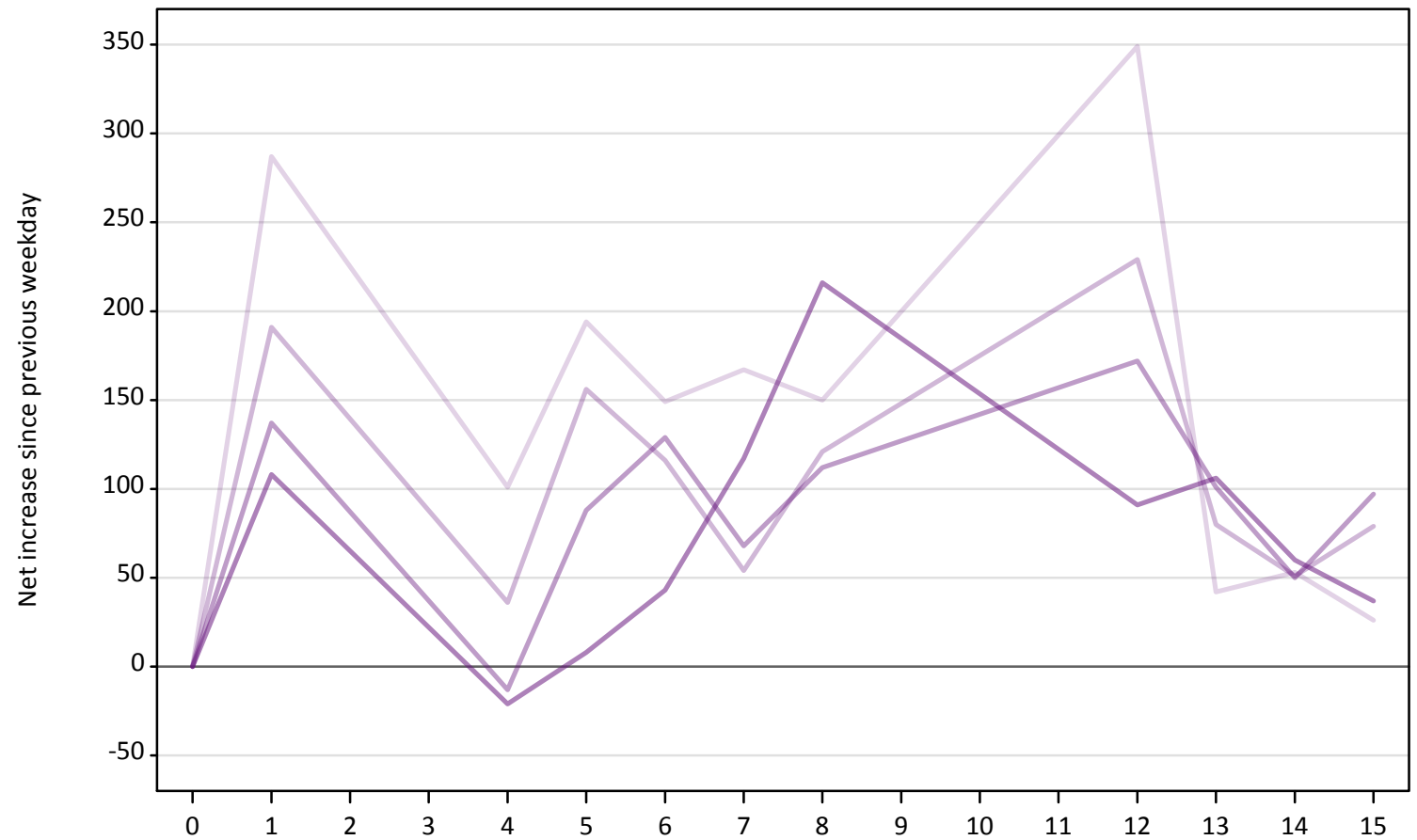
Net increase since previous weekday (2019 cycle up to A level results day)

Applicant status, days since A level results day	2015	2016	2017	2018	2019
Holding Offer	0	0	0	0	0
	1	-830	-740	-740	-610
	4	-750	-800	-760	-570
	5	-460	-390	-320	-250
	6	-450	-410	-450	-430
	7	-410	-360	-320	-420
	8	-480	-440	-390	-540
	12	-650	-550	-480	-450
	13	-170	-150	-200	-270
	14	-120	-120	-110	-210
	15	-110	-170	-160	-100



**A.24 Free to be placed in Clearing: Daily net change (from Northern Ireland)**  
Net increase since previous weekday (2019 cycle up to A level results day)

- 2015
- 2016
- 2017
- 2018
- 2019



**A.25 Free to be placed in Clearing: Daily net change (from Northern Ireland)**

Net increase since previous weekday (2019 cycle up to A level results day)

Applicant status, days since A level results day		2015	2016	2017	2018	2019
Free to be placed in Clearing	0	0	0	0	0	0
	1	290	190	140	110	
	4	100	40	-10	-20	
	5	190	160	90	10	
	6	150	120	130	40	
	7	170	50	70	120	
	8	150	120	110	220	
	12	350	230	170	90	
	13	40	80	100	110	
	14	50	50	50	60	
	15	30	80	100	40	