

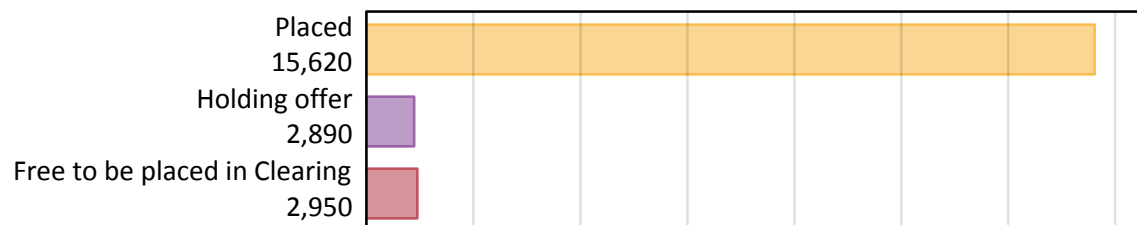
Daily Clearing Analysis: Overview

Analysis at 00:05 on Thursday 15 August 2019 (A level results day)

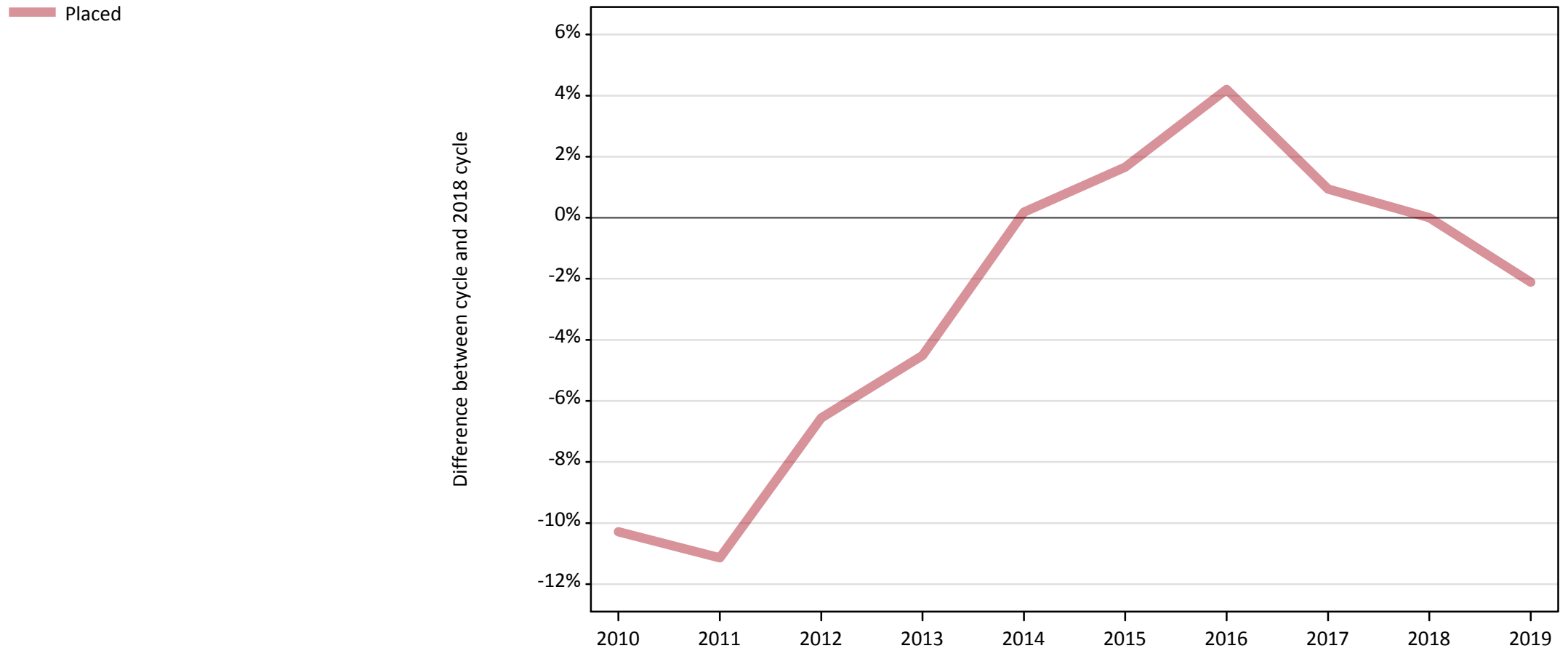
A.1 Applicants by type and status from Wales, 2019 cycle

Applicant type	Status	2019
Main scheme	Placed (Clearing)	110
	Placed (Adjustment)	0
	Placed (Firm)	14,190
	Placed (Insurance)	730
	Placed (Other)	410
	Holding offer	2,890
	Free to be placed in Clearing	2,950
Direct to Clearing	Placed (Direct to Clearing)	180
	Other (Direct to Clearing)	360
All applicants	Placed	15,620

A.2 Summary of applicants who are placed, holding offers or free to be placed in Clearing (Wales)



A.3 All placed applicants from Wales: A level results day
All placed applicants: difference between cycle and 2018 cycle



Note: The percentage change is not plotted in the above chart for groups with fewer than 30 placed applicants in any one cycle.

A.4 All placed applicants from Wales: A level results day

All placed applicants: applicants at A level results day

Applicant type	Status	2010	2011	2012	2013	2014	2015	2016	2017	2018	2019
All applicants	Placed	14,310	14,180	14,910	15,240	15,980	16,220	16,630	16,110	15,960	15,620

A.5 All placed applicants from Wales: A level results day

All placed applicants: difference between cycle and 2018 cycle

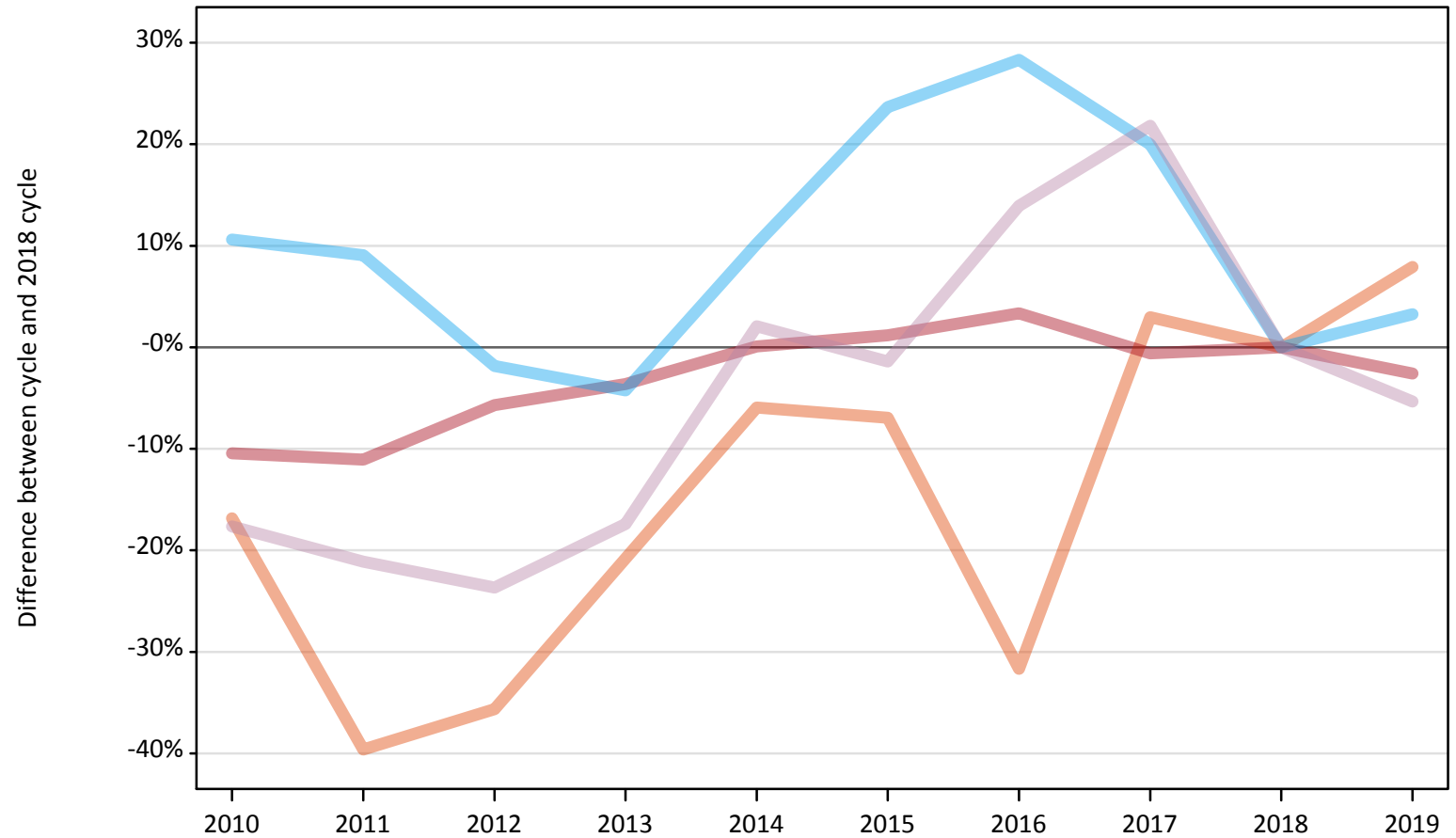
Applicant type	Status	2010	2011	2012	2013	2014	2015	2016	2017	2018	2019
All applicants	Placed	-10%	-11%	-7%	-5%	0%	2%	4%	1%	0%	-2%

Note: The percentage change is not recorded in the above table for groups with fewer than 10 placed applicants in that cycle or in the 2018 cycle.

A.6 Placed main scheme applicants from Wales: A level results day

All Main scheme placed routes (excluding Adjustment): difference between cycle and 2018 cycle

- Placed (Clearing)
- Placed (Firm)
- Placed (Insurance)
- Placed (Other)



Note: The percentage change is not plotted in the above chart for groups with fewer than 30 placed applicants in any one cycle.

A.7 Placed main scheme applicants from Wales: A level results day

All Main scheme placed routes (excluding Adjustment): applicants at A level results day

Applicant type	Status	2010	2011	2012	2013	2014	2015	2016	2017	2018	2019
Main scheme	Placed (Clearing)	80	60	70	80	100	90	70	100	100	110
	Placed (Firm)	13,050	12,960	13,740	14,040	14,580	14,740	15,060	14,480	14,570	14,190
	Placed (Insurance)	780	770	690	680	780	870	910	850	710	730
	Placed (Other)	360	340	330	360	440	430	490	530	430	410

A.8 Placed main scheme applicants from Wales: A level results day

All Main scheme placed routes (excluding Adjustment): difference between cycle and 2018 cycle

Applicant type	Status	2010	2011	2012	2013	2014	2015	2016	2017	2018	2019
Main scheme	Placed (Clearing)	-17%	-40%	-36%	-21%	-6%	-7%	-32%	3%	0%	8%
	Placed (Firm)	-10%	-11%	-6%	-4%	0%	1%	3%	-1%	0%	-3%
	Placed (Insurance)	11%	9%	-2%	-4%	10%	24%	28%	20%	0%	3%
	Placed (Other)	-18%	-21%	-24%	-17%	2%	-1%	14%	22%	0%	-5%

Note: The percentage change is not recorded in the above table for groups with fewer than 10 placed applicants in that cycle or in the 2018 cycle.

A.9 Main scheme applicants placed through adjustment: A level results day

Placed through adjustment: difference between cycle and 2018 cycle

[Analysis on placed by adjustment available from 16 August 2019]

A.10 Main scheme applicants placed through adjustment: A level results day

Placed through adjustment: applicants at A level results day

[Analysis on placed by adjustment available from 16 August 2019]

A.11 Main scheme applicants placed through adjustment: A level results day

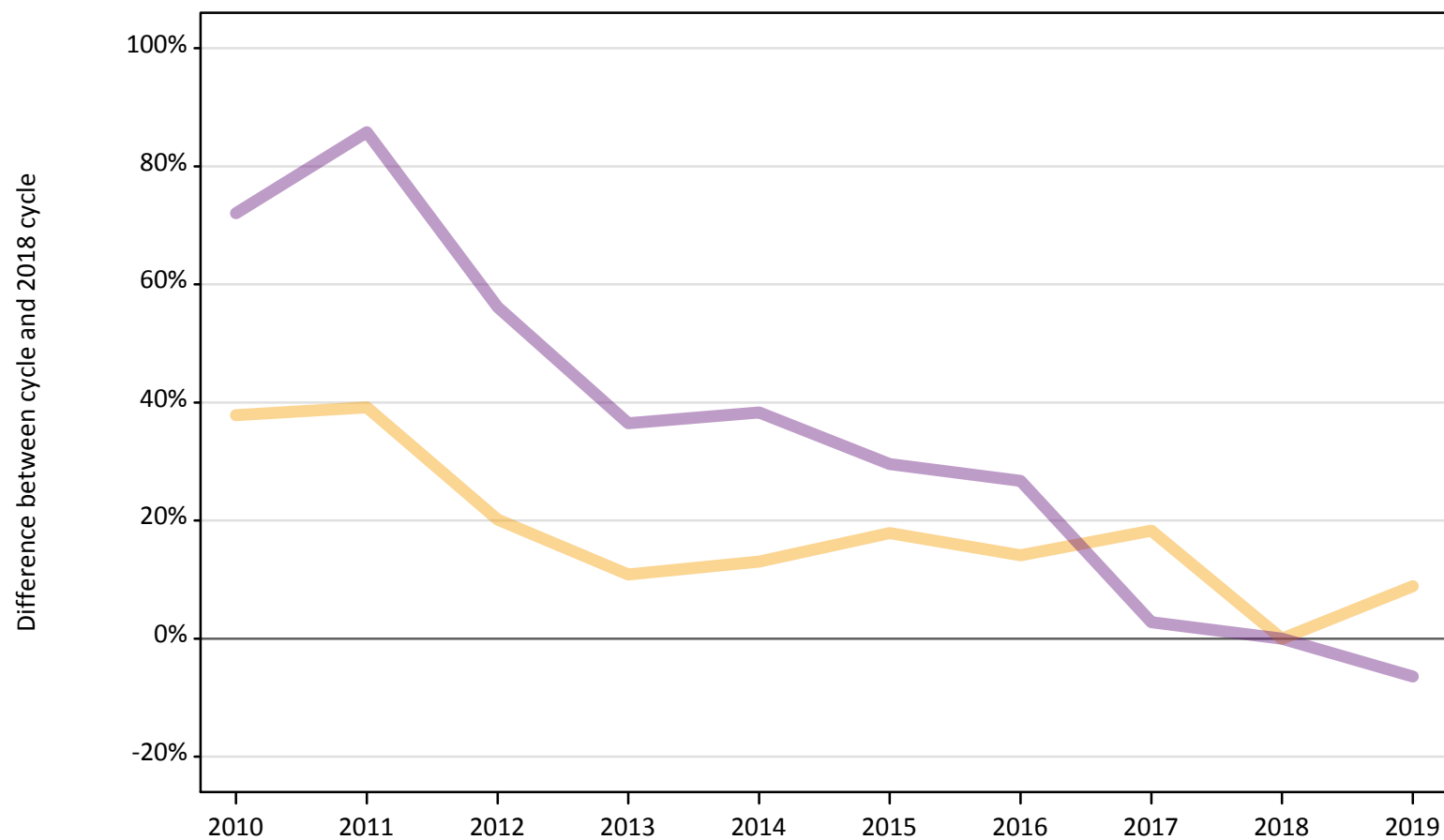
Placed through adjustment: difference between cycle and 2018 cycle

[Analysis on placed by adjustment available from 16 August 2019]

A.12 Main scheme applicants not currently placed from Wales: A level results day

Applicants in unplaced states: difference between cycle and 2018 cycle

— Holding offer
— Free to be placed in Clearing



Note: The percentage change is not plotted in the above chart for groups with fewer than 30 unplaced applicants in any one cycle.

A.13 Main scheme applicants not currently placed from Wales: A level results day

Applicants in unplaced states: applicants at A level results day

Applicant type	Status	2010	2011	2012	2013	2014	2015	2016	2017	2018	2019
Main scheme	Holding offer	3,660	3,690	3,190	2,940	3,000	3,130	3,030	3,140	2,650	2,890
	Free to be placed in Clearing	5,430	5,860	4,920	4,310	4,360	4,090	4,000	3,240	3,150	2,950

A.14 Main scheme applicants not currently placed from Wales: A level results day

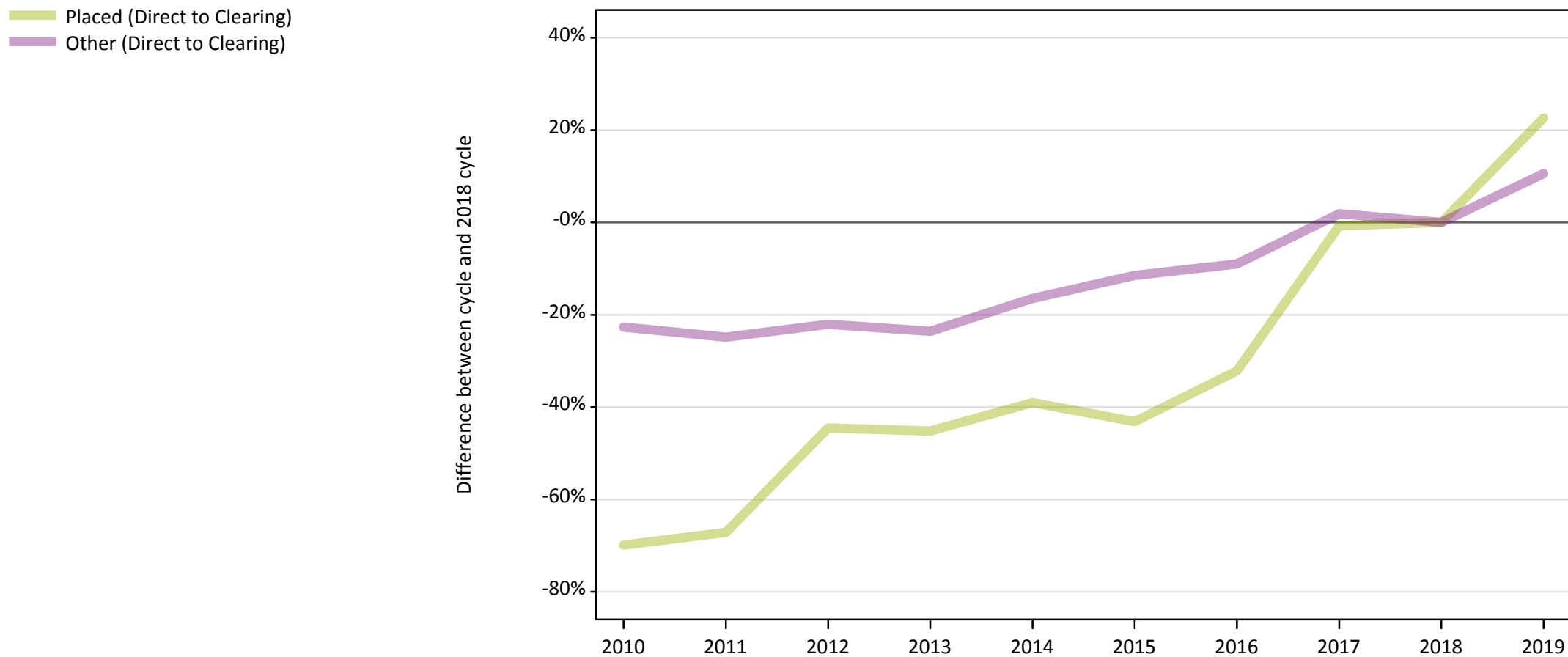
Applicants in unplaced states: difference between cycle and 2018 cycle

Applicant type	Status	2010	2011	2012	2013	2014	2015	2016	2017	2018	2019
Main scheme	Holding offer	38%	39%	20%	11%	13%	18%	14%	18%	0%	9%
	Free to be placed in Clearing	72%	86%	56%	36%	38%	30%	27%	3%	0%	-6%

Note: The percentage change is not recorded in the above table for groups with fewer than 10 unplaced applicants in that cycle or in the 2018 cycle.

A.15 Direct to Clearing applicants from Wales: A level results day

Direct to Clearing: difference between cycle and 2018 cycle



Note: The percentage change is not plotted in the above chart for groups with fewer than 30 placed applicants in any one cycle.

A.16 Direct to Clearing applicants from Wales: A level results day

Direct to Clearing A level results day

Applicant type	Status	2010	2011	2012	2013	2014	2015	2016	2017	2018	2019
Direct to Clearing	Placed (Direct to Clearing)	40	50	80	80	90	80	100	150	150	180
	Other (Direct to Clearing)	250	240	250	250	270	290	290	330	320	360

A.17 Direct to Clearing applicants from Wales: A level results day

Direct to Clearing: difference between cycle and 2018 cycle

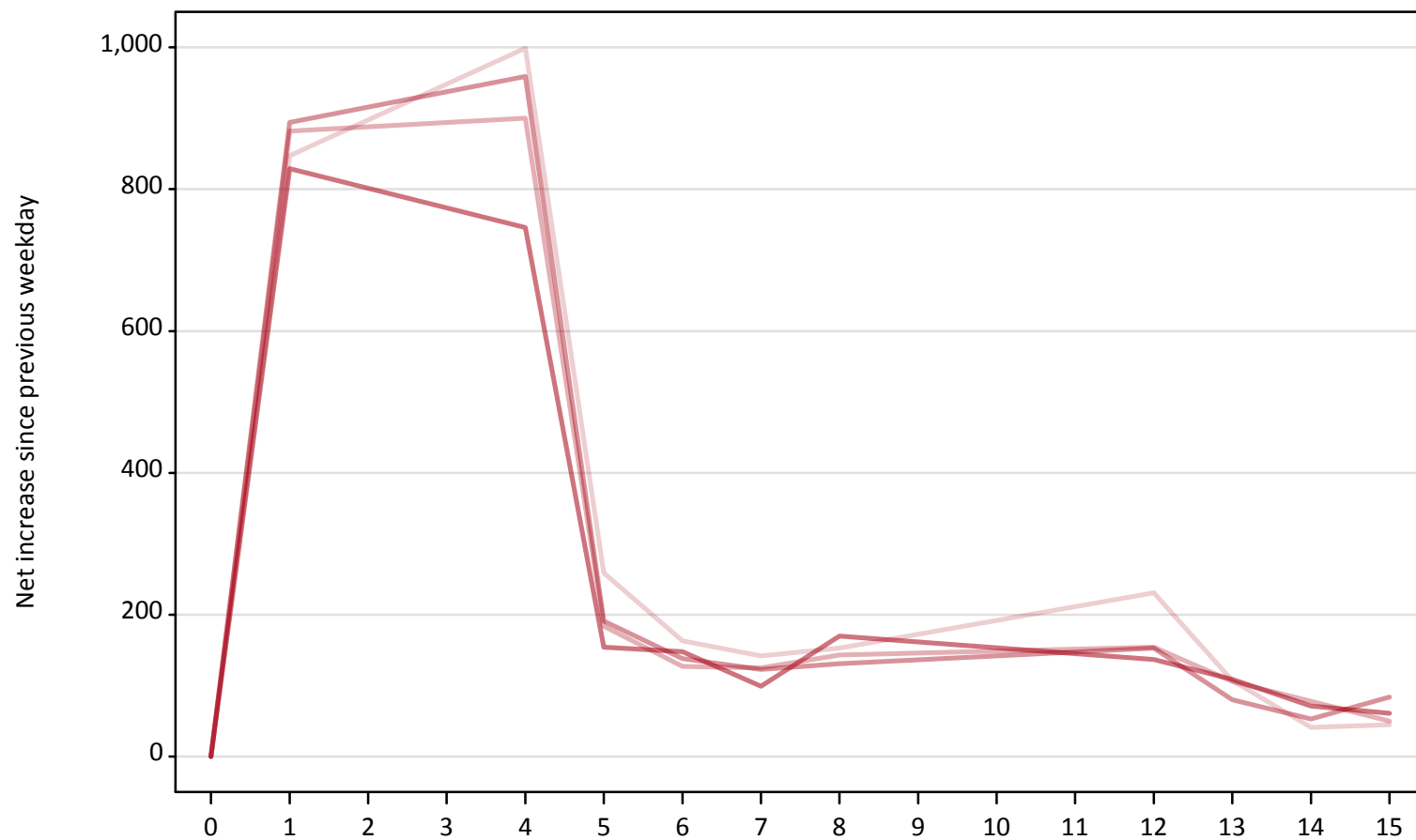
Applicant type	Status	2010	2011	2012	2013	2014	2015	2016	2017	2018	2019
Direct to Clearing	Placed (Direct to Clearing)	-70%	-67%	-45%	-45%	-39%	-43%	-32%	-1%	0%	23%
	Other (Direct to Clearing)	-23%	-25%	-22%	-24%	-16%	-11%	-9%	2%	0%	11%

Note: The percentage change is not recorded in the above table for groups with fewer than 10 placed applicants in that cycle or in the 2018 cycle.

A.18 All Placed: Daily net change (from Wales)

Net increase since previous weekday (2019 cycle up to A level results day)

- 2015
- 2016
- 2017
- 2018
- 2019

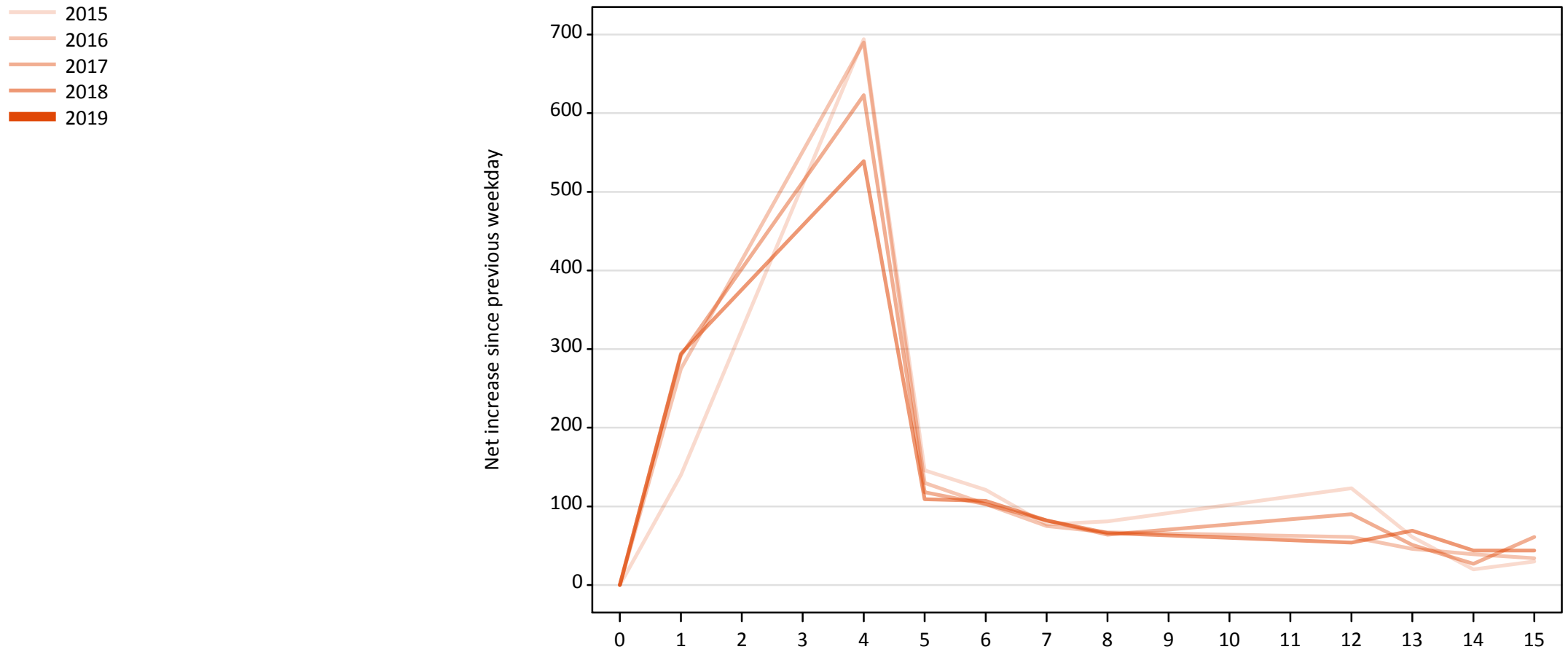


A.19 All Placed: Daily net change (from Wales)

Net increase since previous weekday (2019 cycle up to A level results day)

Applicant status, days since A level results day		2015	2016	2017	2018	2019
All Placed	0	0	0	0	0	0
	1	850	880	890	830	
	4	1,000	900	960	750	
	5	260	180	190	150	
	6	160	130	140	150	
	7	140	130	120	100	
	8	150	140	130	170	
	12	230	150	150	140	
	13	110	110	80	110	
	14	40	80	50	70	
	15	50	50	80	60	

A.20 Placed through Clearing only: Daily net change (from Wales)
Net increase since previous weekday (2019 cycle up to A level results day)



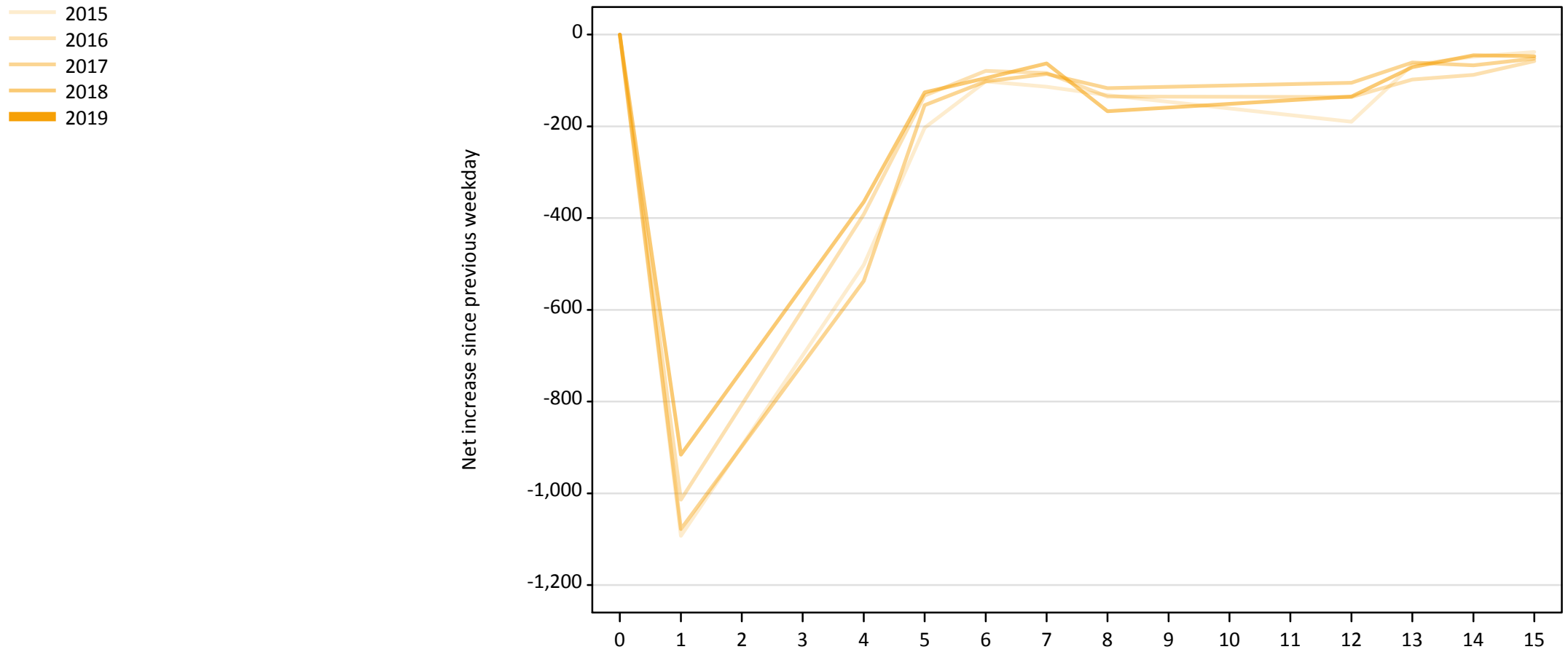
A.21 Placed through Clearing only: Daily net change (from Wales)

Net increase since previous weekday (2019 cycle up to A level results day)

Applicant status, days since A level results day		2015	2016	2017	2018	2019
Placed through Clearing only	0	0	0	0	0	0
	1	140	280	290	290	
	4	690	690	620	540	
	5	150	130	120	110	
	6	120	100	100	110	
	7	80	80	80	80	
	8	80	70	60	70	
	12	120	60	90	50	
	13	60	50	50	70	
	14	20	40	30	40	
	15	30	30	60	40	

A.22 Holding Offer: Daily net change (from Wales)

Net increase since previous weekday (2019 cycle up to A level results day)



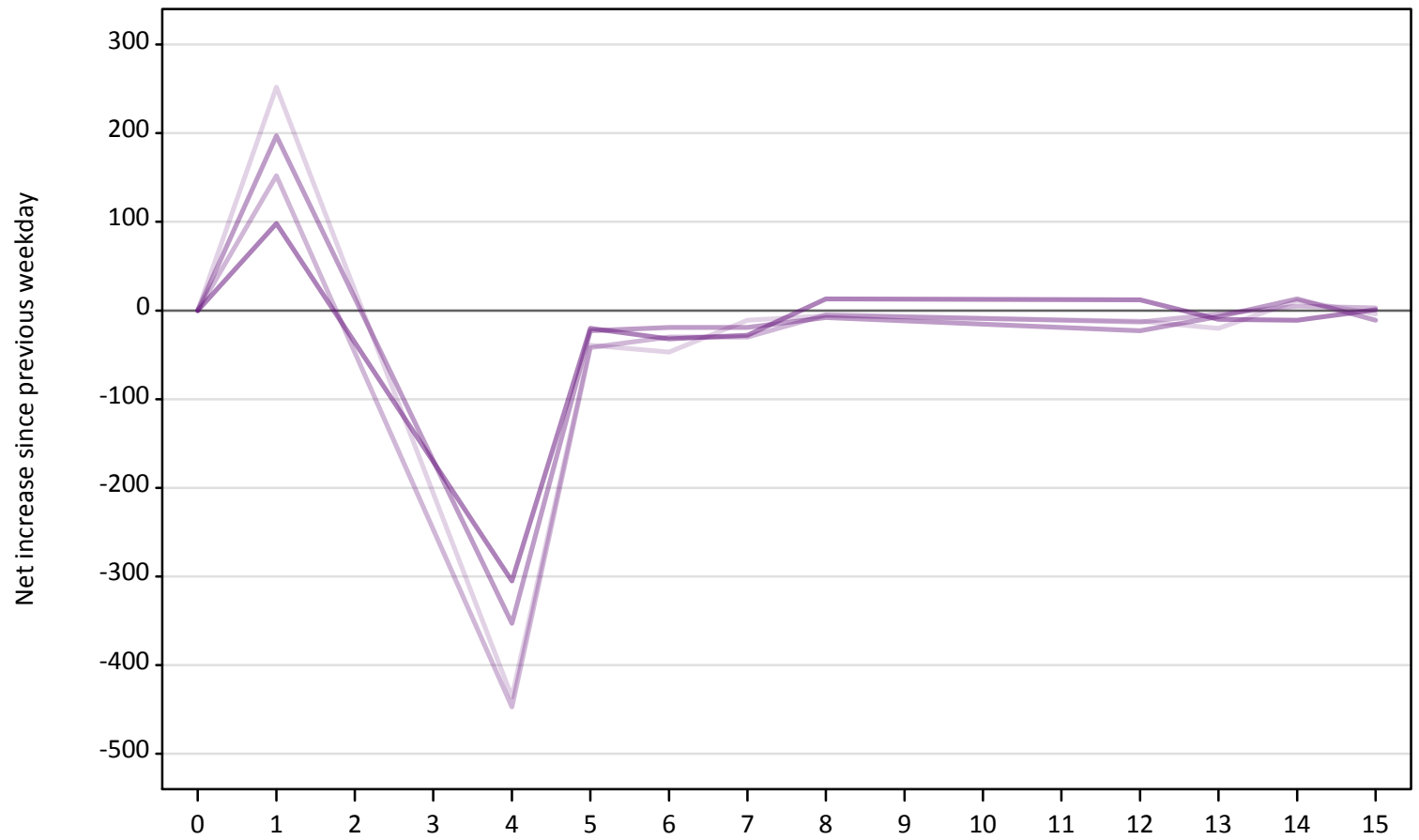
A.23 Holding Offer: Daily net change (from Wales)

Net increase since previous weekday (2019 cycle up to A level results day)

Applicant status, days since A level results day		2015	2016	2017	2018	2019
Holding Offer	0	0	0	0	0	0
	1	-1,090	-1,010	-1,080	-920	
	4	-500	-390	-540	-370	
	5	-200	-130	-150	-130	
	6	-100	-80	-100	-100	
	7	-110	-80	-90	-60	
	8	-130	-140	-120	-170	
	12	-190	-140	-110	-140	
	13	-70	-100	-60	-70	
	14	-50	-90	-70	-50	
	15	-40	-60	-50	-50	

A.24 Free to be placed in Clearing: Daily net change (from Wales)
Net increase since previous weekday (2019 cycle up to A level results day)

- 2015
- 2016
- 2017
- 2018
- 2019



A.25 Free to be placed in Clearing: Daily net change (from Wales)

Net increase since previous weekday (2019 cycle up to A level results day)

Applicant status, days since A level results day		2015	2016	2017	2018	2019
Free to be placed in Clearing	0	0	0	0	0	0
	1	250	150	200	100	
	4	-440	-450	-350	-310	
	5	-40	-40	-20	-20	
	6	-50	-30	-20	-30	
	7	-10	-30	-20	-30	
	8	-10	-10	-10	10	
	12	-10	-10	-20	10	
	13	-20	0	-10	-10	
	14	10	10	10	-10	
	15	0	0	-10	0	