

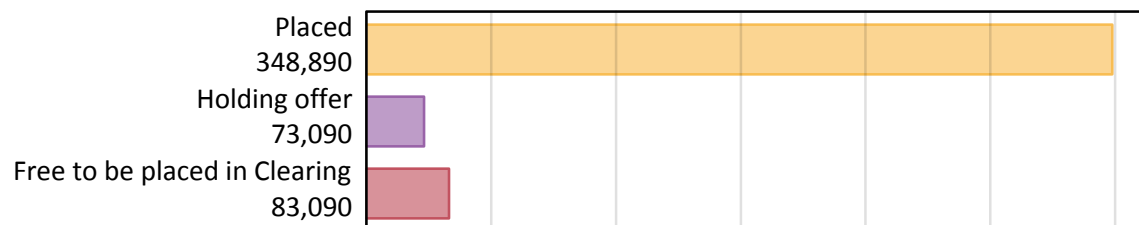
Daily Clearing Analysis: Overview

Analysis at 00:05 on Thursday 15 August 2019 (A level results day)

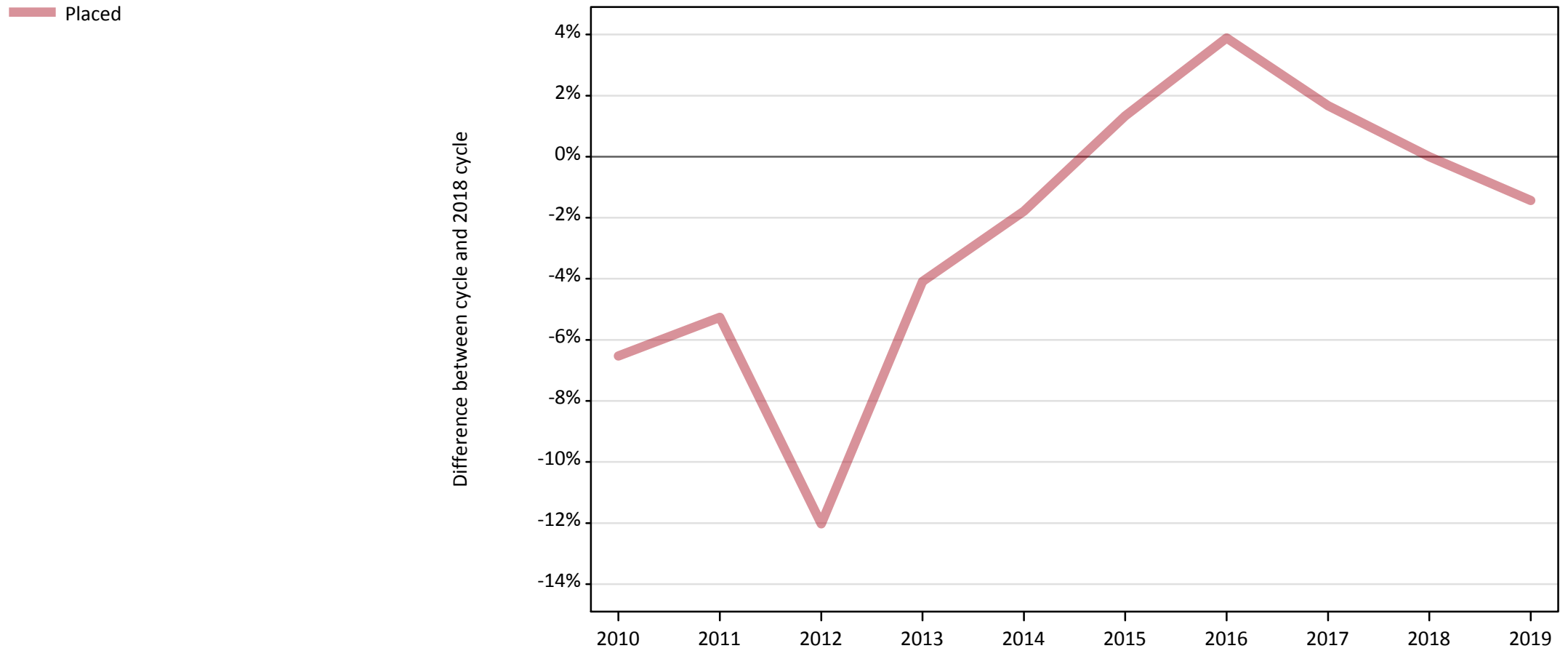
A.1 Applicants by type and status from the UK, 2019 cycle

Applicant type	Status	2019
Main scheme	Placed (Clearing)	2,880
	Placed (Adjustment)	0
	Placed (Firm)	308,290
	Placed (Insurance)	25,040
	Placed (Other)	9,500
	Holding offer	73,090
	Free to be placed in Clearing	83,090
Direct to Clearing	Placed (Direct to Clearing)	3,180
	Other (Direct to Clearing)	7,500
All applicants	Placed	348,890

A.2 Summary of applicants who are placed, holding offers or free to be placed in Clearing (the UK)



A.3 All placed applicants from the UK: A level results day
All placed applicants: difference between cycle and 2018 cycle



Note: The percentage change is not plotted in the above chart for groups with fewer than 30 placed applicants in any one cycle.

A.4 All placed applicants from the UK: A level results day

All placed applicants: applicants at A level results day

Applicant type	Status	2010	2011	2012	2013	2014	2015	2016	2017	2018	2019
All applicants	Placed	330,850	335,330	311,390	339,500	347,650	358,680	367,730	359,860	353,960	348,890

A.5 All placed applicants from the UK: A level results day

All placed applicants: difference between cycle and 2018 cycle

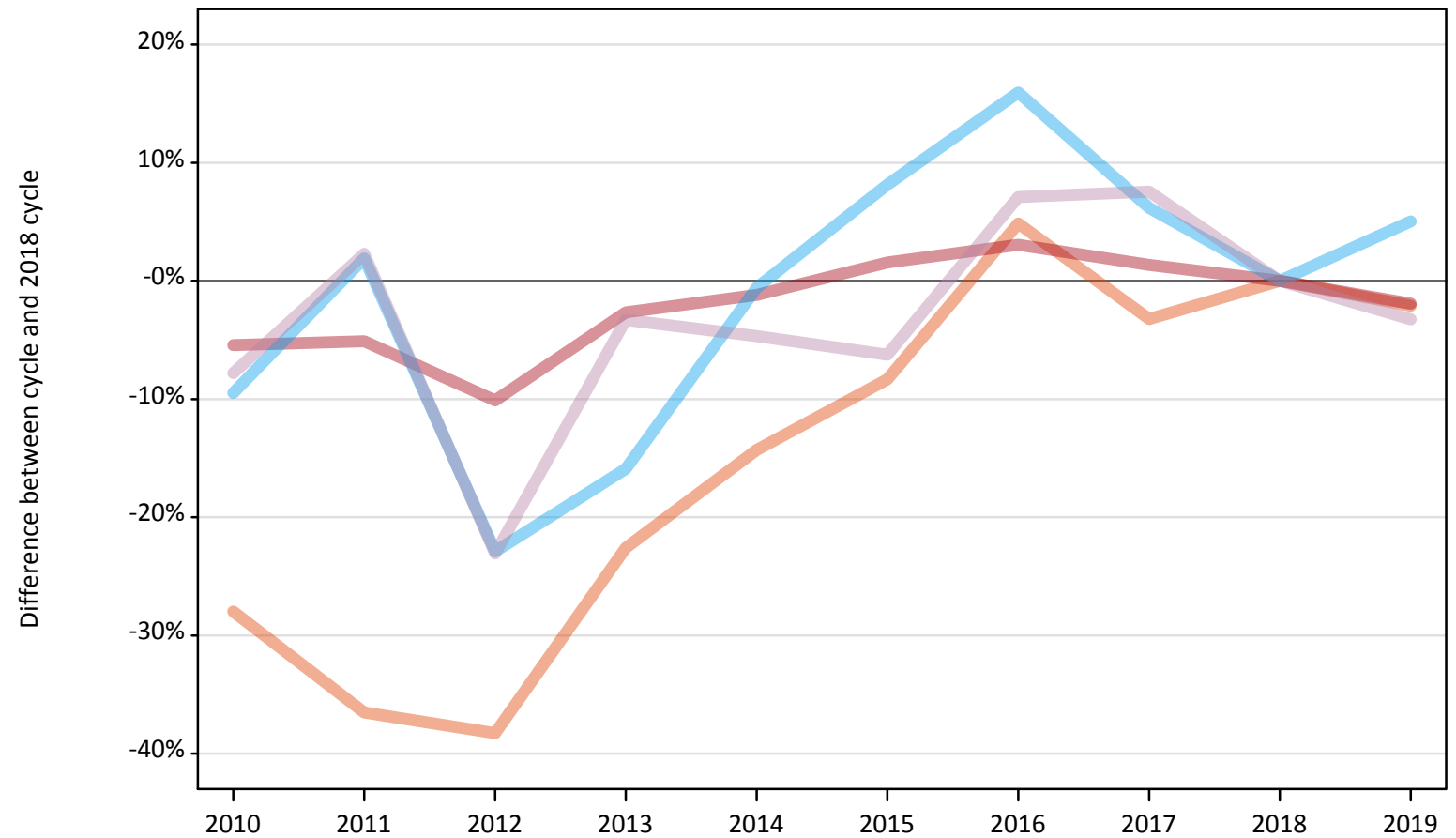
Applicant type	Status	2010	2011	2012	2013	2014	2015	2016	2017	2018	2019
All applicants	Placed	-7%	-5%	-12%	-4%	-2%	1%	4%	2%	0%	-1%

Note: The percentage change is not recorded in the above table for groups with fewer than 10 placed applicants in that cycle or in the 2018 cycle.

A.6 Placed main scheme applicants from the UK: A level results day

All Main scheme placed routes (excluding Adjustment): difference between cycle and 2018 cycle

- Placed (Clearing)
- Placed (Firm)
- Placed (Insurance)
- Placed (Other)



Note: The percentage change is not plotted in the above chart for groups with fewer than 30 placed applicants in any one cycle.

A.7 Placed main scheme applicants from the UK: A level results day

All Main scheme placed routes (excluding Adjustment): applicants at A level results day

Applicant type	Status	2010	2011	2012	2013	2014	2015	2016	2017	2018	2019
Main scheme	Placed (Clearing)	2,120	1,870	1,820	2,280	2,520	2,700	3,090	2,850	2,940	2,880
	Placed (Firm)	297,290	298,360	282,610	306,010	310,590	319,260	323,950	318,590	314,370	308,290
	Placed (Insurance)	21,580	24,290	18,380	20,040	23,700	25,780	27,640	25,310	23,840	25,040
	Placed (Other)	9,060	10,050	7,560	9,500	9,360	9,210	10,520	10,560	9,820	9,500

A.8 Placed main scheme applicants from the UK: A level results day

All Main scheme placed routes (excluding Adjustment): difference between cycle and 2018 cycle

Applicant type	Status	2010	2011	2012	2013	2014	2015	2016	2017	2018	2019
Main scheme	Placed (Clearing)	-28%	-37%	-38%	-23%	-14%	-8%	5%	-3%	0%	-2%
	Placed (Firm)	-5%	-5%	-10%	-3%	-1%	2%	3%	1%	0%	-2%
	Placed (Insurance)	-9%	2%	-23%	-16%	-1%	8%	16%	6%	0%	5%
	Placed (Other)	-8%	2%	-23%	-3%	-5%	-6%	7%	8%	0%	-3%

Note: The percentage change is not recorded in the above table for groups with fewer than 10 placed applicants in that cycle or in the 2018 cycle.

A.9 Main scheme applicants placed through adjustment: A level results day

Placed through adjustment: difference between cycle and 2018 cycle

[Analysis on placed by adjustment available from 16 August 2019]

A.10 Main scheme applicants placed through adjustment: A level results day

Placed through adjustment: applicants at A level results day

[Analysis on placed by adjustment available from 16 August 2019]

A.11 Main scheme applicants placed through adjustment: A level results day

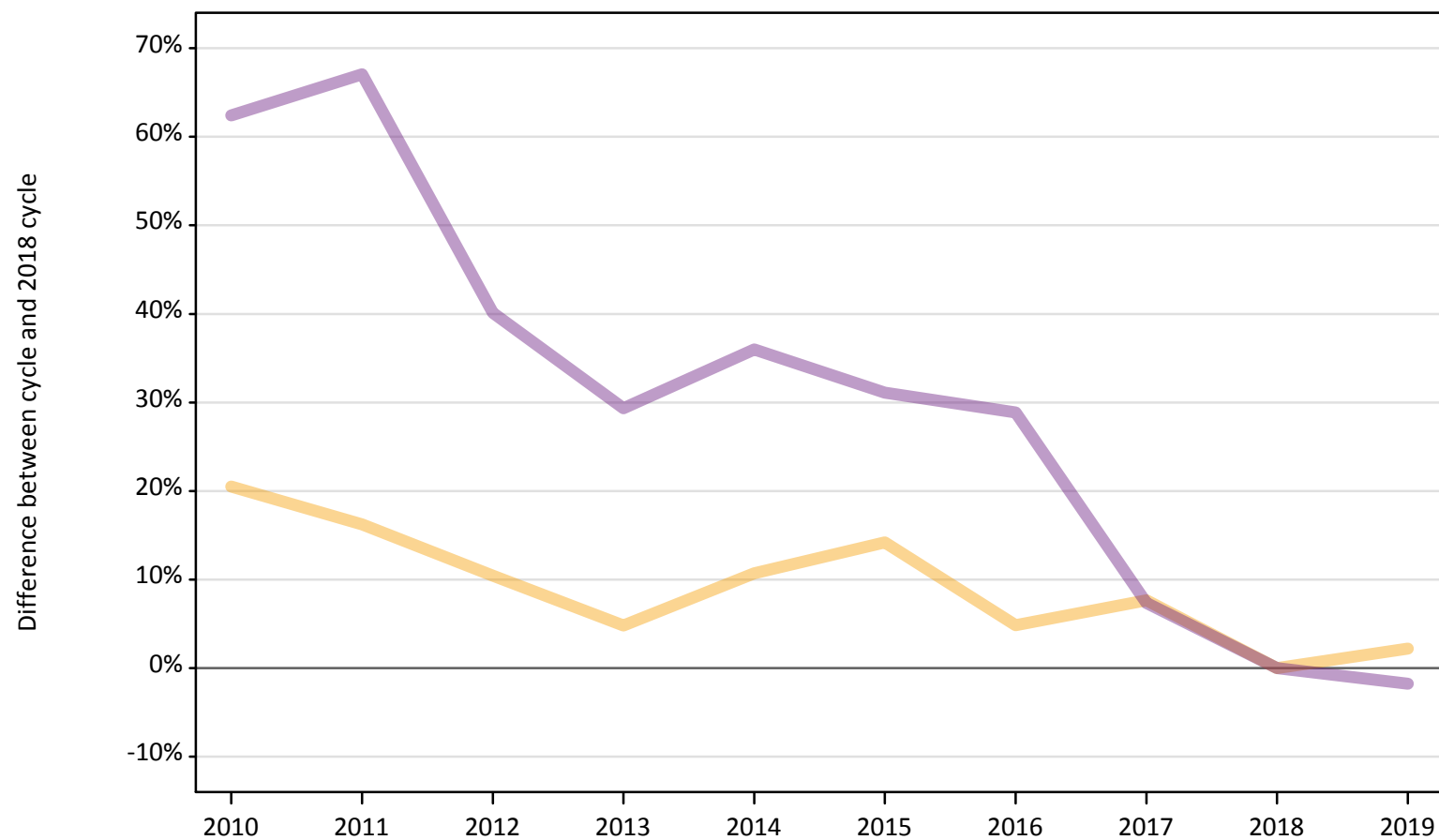
Placed through adjustment: difference between cycle and 2018 cycle

[Analysis on placed by adjustment available from 16 August 2019]

A.12 Main scheme applicants not currently placed from the UK: A level results day

Applicants in unplaced states: difference between cycle and 2018 cycle

— Holding offer
— Free to be placed in Clearing



Note: The percentage change is not plotted in the above chart for groups with fewer than 30 unplaced applicants in any one cycle.

A.13 Main scheme applicants not currently placed from the UK: A level results day

Applicants in unplaced states: applicants at A level results day

Applicant type	Status	2010	2011	2012	2013	2014	2015	2016	2017	2018	2019
Main scheme	Holding offer	86,180	83,130	78,970	74,960	79,170	81,680	74,990	77,000	71,520	73,090
	Free to be placed in Clearing	137,380	141,280	118,500	109,400	115,030	110,880	108,990	90,790	84,580	83,090

A.14 Main scheme applicants not currently placed from the UK: A level results day

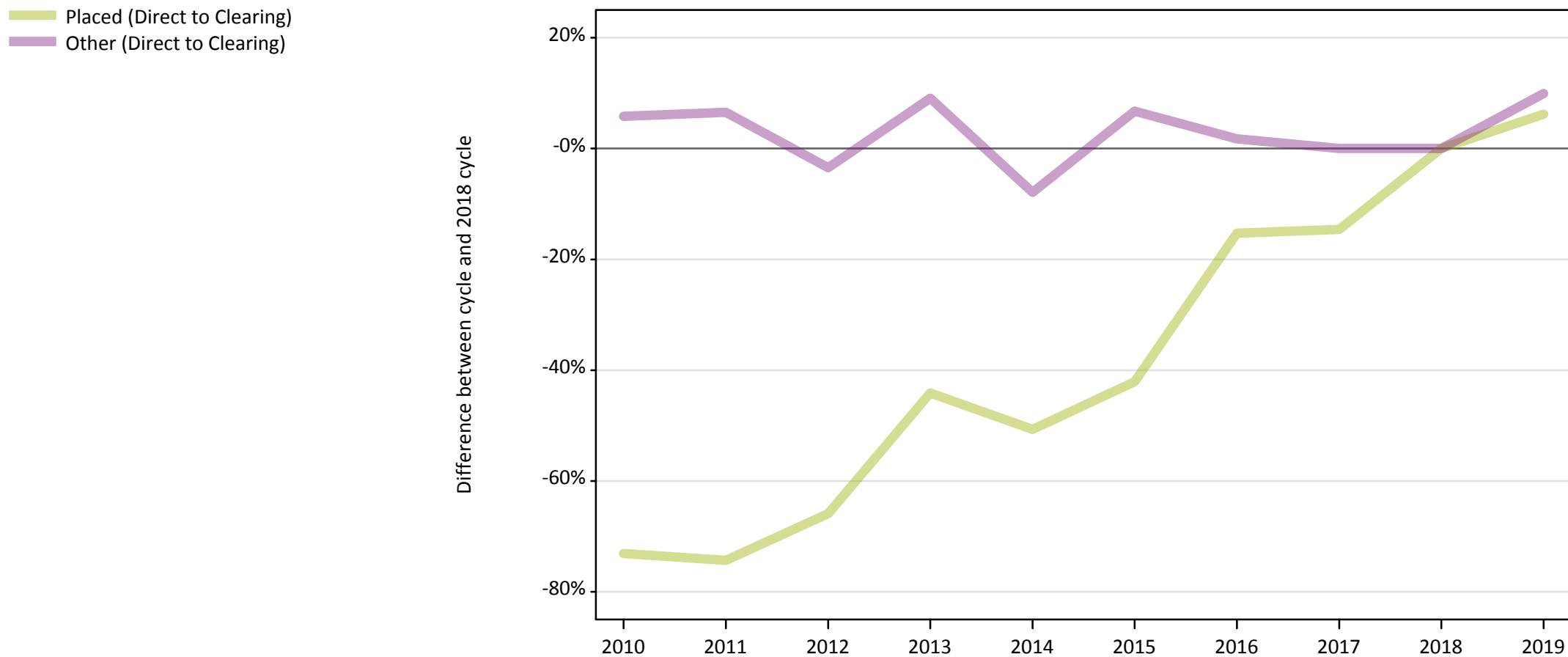
Applicants in unplaced states: difference between cycle and 2018 cycle

Applicant type	Status	2010	2011	2012	2013	2014	2015	2016	2017	2018	2019
Main scheme	Holding offer	20%	16%	10%	5%	11%	14%	5%	8%	0%	2%
	Free to be placed in Clearing	62%	67%	40%	29%	36%	31%	29%	7%	0%	-2%

Note: The percentage change is not recorded in the above table for groups with fewer than 10 unplaced applicants in that cycle or in the 2018 cycle.

A.15 Direct to Clearing applicants from the UK: A level results day

Direct to Clearing: difference between cycle and 2018 cycle



Note: The percentage change is not plotted in the above chart for groups with fewer than 30 placed applicants in any one cycle.

A.16 Direct to Clearing applicants from the UK: A level results day

Direct to Clearing A level results day

Applicant type	Status	2010	2011	2012	2013	2014	2015	2016	2017	2018	2019
Direct to Clearing	Placed (Direct to Clearing)	810	770	1,020	1,670	1,470	1,730	2,530	2,550	2,990	3,180
	Other (Direct to Clearing)	7,210	7,260	6,580	7,440	6,280	7,280	6,940	6,820	6,820	7,500

A.17 Direct to Clearing applicants from the UK: A level results day

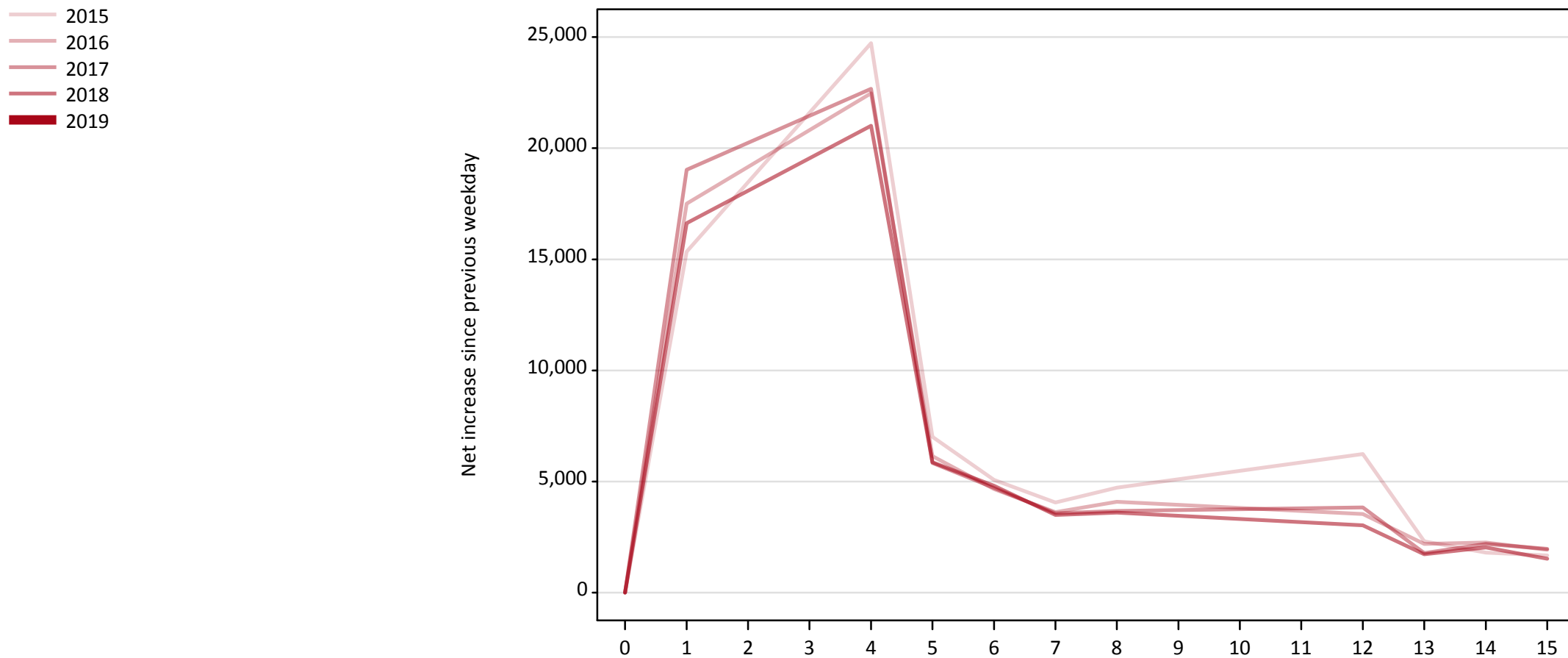
Direct to Clearing: difference between cycle and 2018 cycle

Applicant type	Status	2010	2011	2012	2013	2014	2015	2016	2017	2018	2019
Direct to Clearing	Placed (Direct to Clearing)	-73%	-74%	-66%	-44%	-51%	-42%	-15%	-15%	0%	6%
	Other (Direct to Clearing)	6%	7%	-3%	9%	-8%	7%	2%	0%	0%	10%

Note: The percentage change is not recorded in the above table for groups with fewer than 10 placed applicants in that cycle or in the 2018 cycle.

A.18 All Placed: Daily net change (from the UK)

Net increase since previous weekday (2019 cycle up to A level results day)

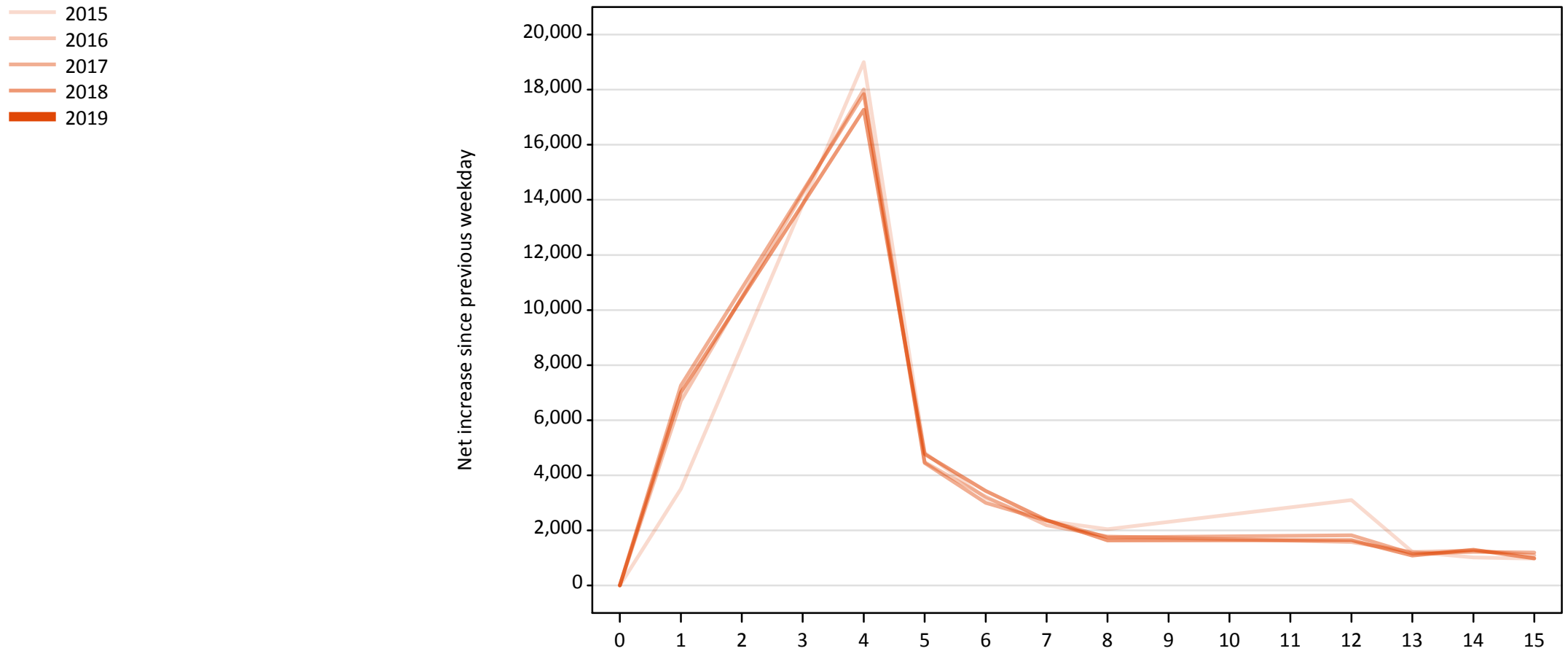


A.19 All Placed: Daily net change (from the UK)

Net increase since previous weekday (2019 cycle up to A level results day)

Applicant status, days since A level results day		2015	2016	2017	2018	2019
All Placed	0	0	0	0	0	0
	1	15,350	17,510	19,030	16,620	
	4	24,730	22,470	22,670	21,010	
	5	7,020	6,140	5,840	5,870	
	6	5,070	4,660	4,710	4,810	
	7	4,060	3,630	3,570	3,500	
	8	4,720	4,090	3,670	3,600	
	12	6,240	3,530	3,840	3,020	
	13	2,310	2,200	1,780	1,720	
	14	1,810	2,260	2,200	2,030	
	15	1,680	1,920	1,970	1,530	

A.20 Placed through Clearing only: Daily net change (from the UK)
Net increase since previous weekday (2019 cycle up to A level results day)

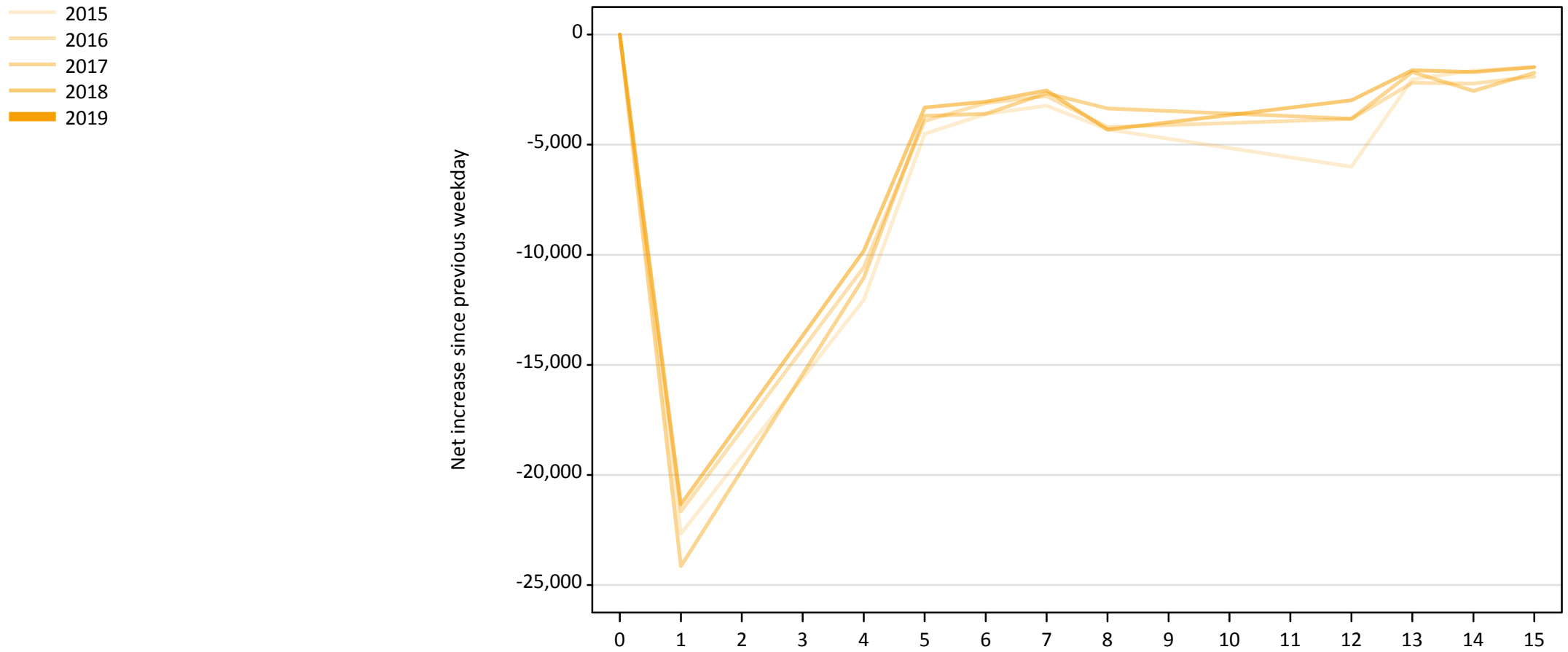


A.21 Placed through Clearing only: Daily net change (from the UK)

Net increase since previous weekday (2019 cycle up to A level results day)

Applicant status, days since A level results day		2015	2016	2017	2018	2019
Placed through Clearing only	0	0	0	0	0	0
	1	3,510	6,700	7,260	7,010	
	4	19,000	18,010	17,840	17,270	
	5	4,820	4,470	4,450	4,770	
	6	3,170	3,220	3,000	3,430	
	7	2,350	2,180	2,360	2,370	
	8	2,040	1,780	1,740	1,640	
	12	3,100	1,570	1,820	1,640	
	13	1,220	1,210	1,150	1,080	
	14	1,020	1,270	1,220	1,300	
	15	980	1,090	1,200	980	

A.22 Holding Offer: Daily net change (from the UK)
Net increase since previous weekday (2019 cycle up to A level results day)



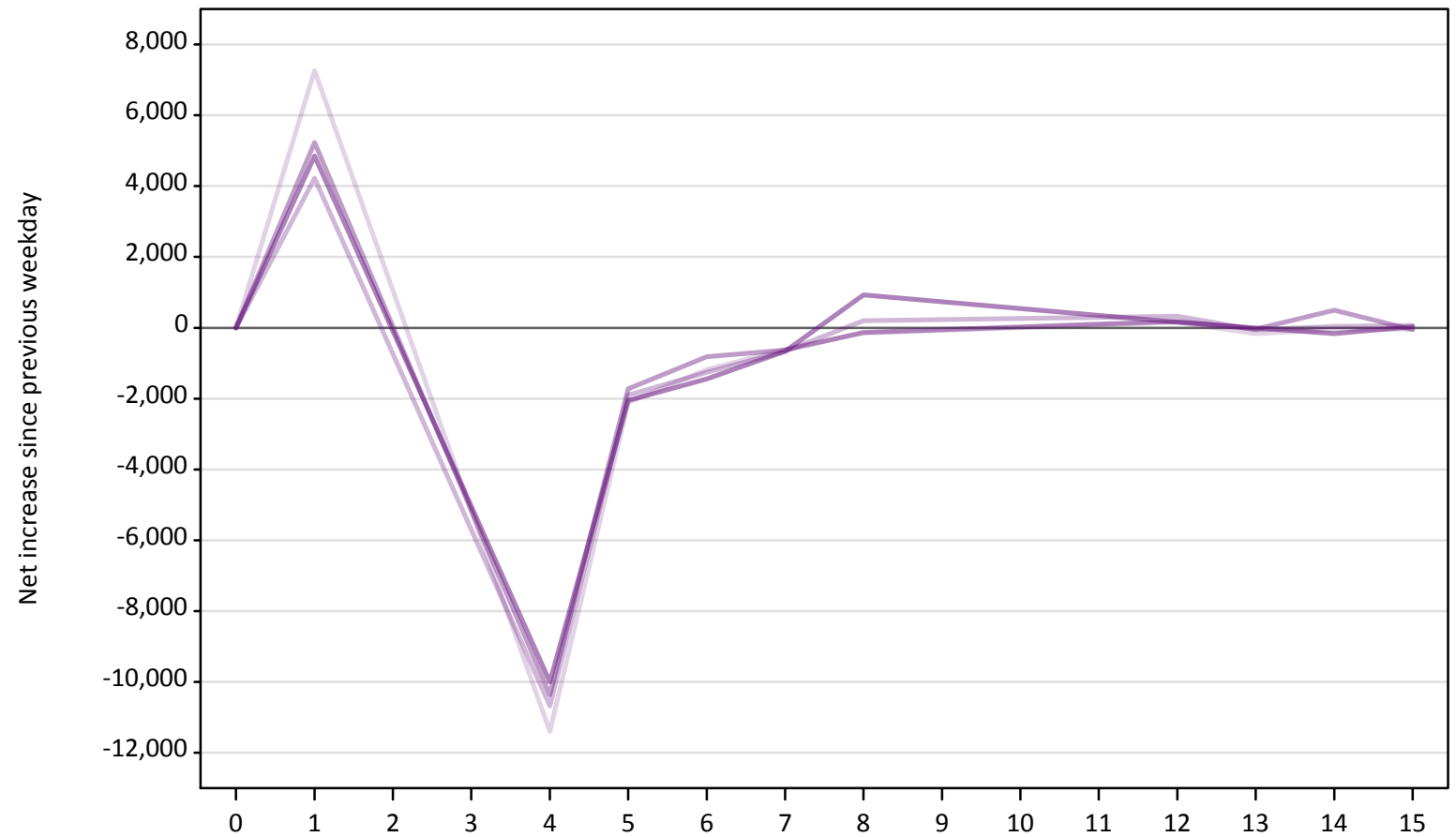
A.23 Holding Offer: Daily net change (from the UK)

Net increase since previous weekday (2019 cycle up to A level results day)

Applicant status, days since A level results day		2015	2016	2017	2018	2019
Holding Offer	0	0	0	0	0	0
	1	-22,670	-21,650	-24,140	-21,330	
	4	-12,050	-10,570	-11,040	-9,830	
	5	-4,510	-3,920	-3,690	-3,320	
	6	-3,610	-3,110	-3,600	-3,040	
	7	-3,230	-2,790	-2,670	-2,540	
	8	-4,310	-4,200	-3,360	-4,320	
	12	-6,000	-3,830	-3,830	-2,980	
	13	-2,030	-2,190	-1,700	-1,620	
	14	-1,640	-2,220	-2,560	-1,700	
	15	-1,470	-1,900	-1,740	-1,480	

A.24 Free to be placed in Clearing: Daily net change (from the UK)
Net increase since previous weekday (2019 cycle up to A level results day)

- 2015
- 2016
- 2017
- 2018
- 2019



A.25 Free to be placed in Clearing: Daily net change (from the UK)

Net increase since previous weekday (2019 cycle up to A level results day)

Applicant status, days since A level results day		2015	2016	2017	2018	2019
Free to be placed in Clearing	0	0	0	0	0	0
	1	7,260	4,220	5,230	4,850	
	4	-11,400	-10,680	-10,370	-10,000	
	5	-2,100	-1,900	-1,730	-2,050	
	6	-1,180	-1,260	-820	-1,450	
	7	-610	-660	-630	-660	
	8	-150	200	-130	920	
	12	150	320	190	160	
	13	-170	-50	-40	0	
	14	-50	40	500	-160	
	15	-40	60	-50	30	