

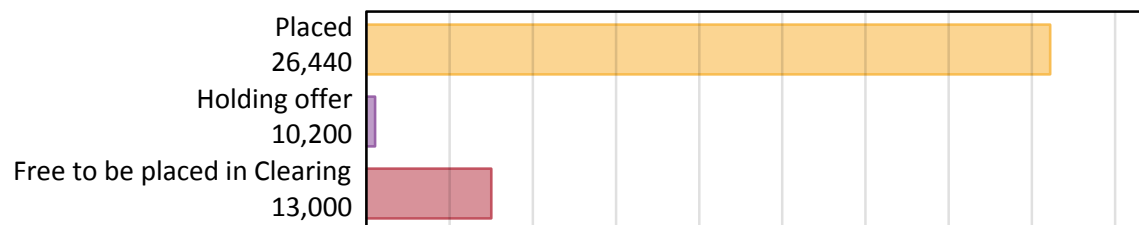
Daily Clearing Analysis: Overview

Analysis at 00:05 on Thursday 15 August 2019 (A level results day)

A.1 Applicants by type and status from the EU - excluding UK, 2019 cycle

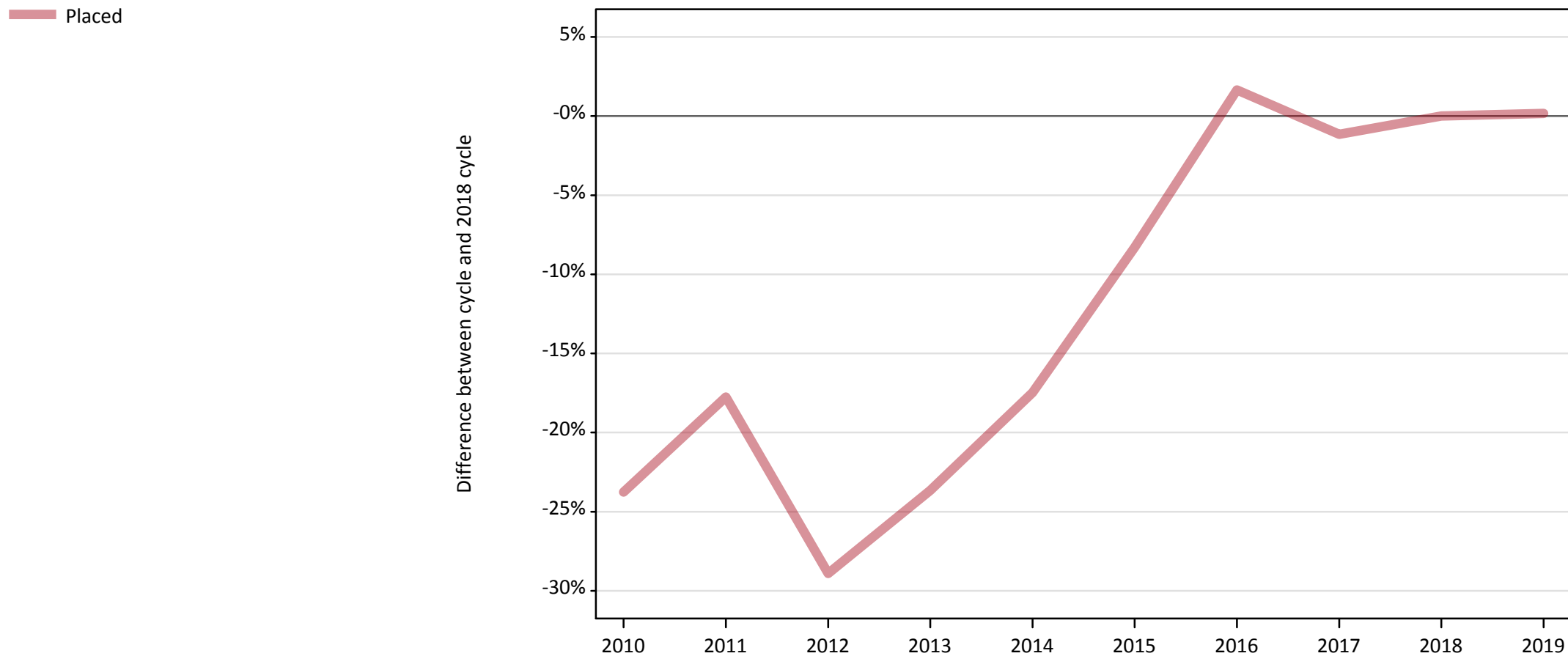
Applicant type	Status	2019
Main scheme	Placed (Clearing)	500
	Placed (Adjustment)	0
	Placed (Firm)	22,780
	Placed (Insurance)	1,830
	Placed (Other)	1,140
	Holding offer	10,200
	Free to be placed in Clearing	13,000
Direct to Clearing	Placed (Direct to Clearing)	200
	Other (Direct to Clearing)	400
All applicants	Placed	26,440

A.2 Summary of applicants who are placed, holding offers or free to be placed in Clearing (the EU - excluding UK)



A.3 All placed applicants from the EU - excluding UK: A level results day

All placed applicants: difference between cycle and 2018 cycle



Note: The percentage change is not plotted in the above chart for groups with fewer than 30 placed applicants in any one cycle.

A.4 All placed applicants from the EU - excluding UK: A level results day

All placed applicants: applicants at A level results day

Applicant type	Status	2010	2011	2012	2013	2014	2015	2016	2017	2018	2019
All applicants	Placed	20,120	21,710	18,760	20,150	21,790	24,210	26,830	26,090	26,400	26,440

A.5 All placed applicants from the EU - excluding UK: A level results day

All placed applicants: difference between cycle and 2018 cycle

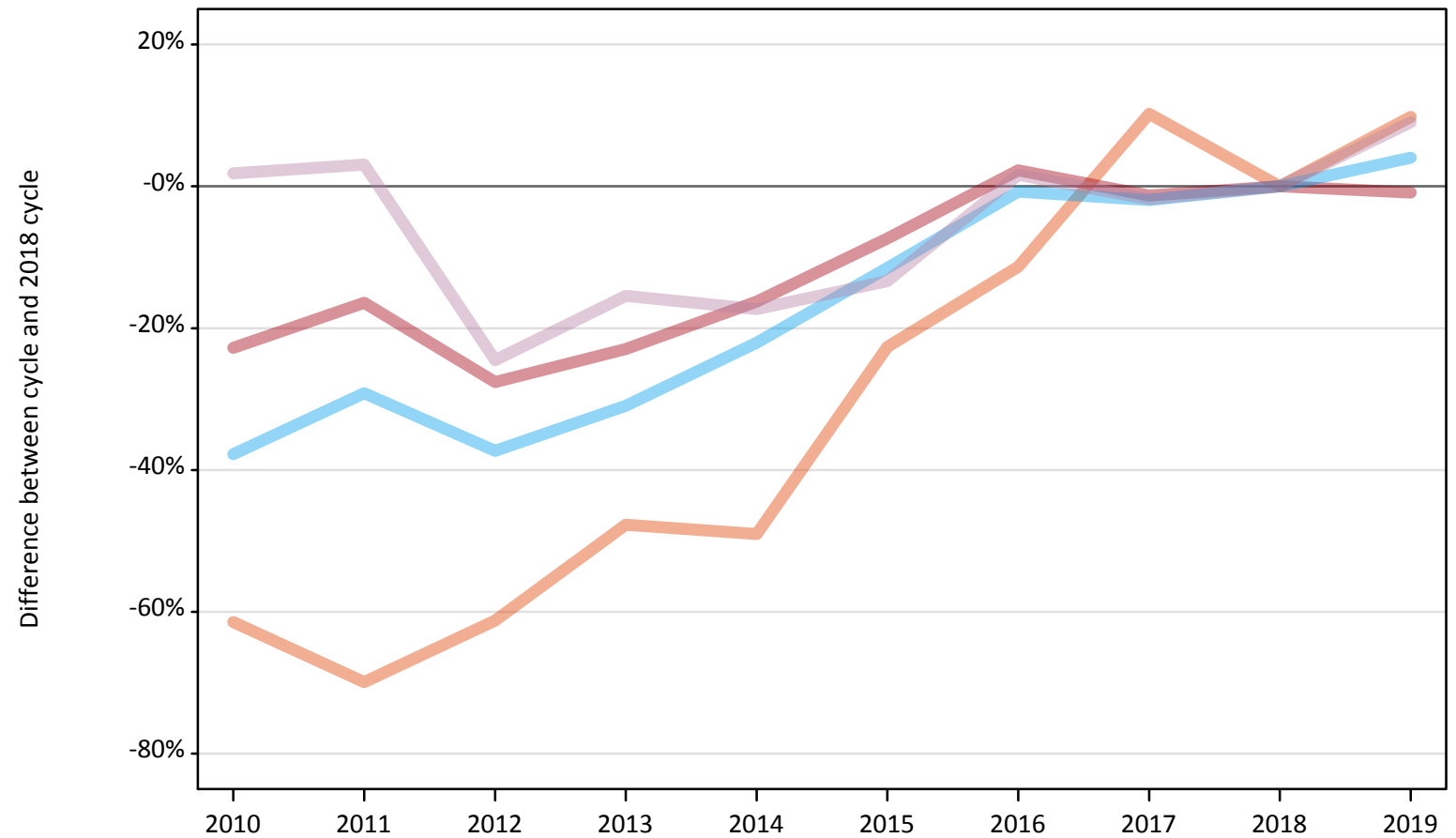
Applicant type	Status	2010	2011	2012	2013	2014	2015	2016	2017	2018	2019
All applicants	Placed	-24%	-18%	-29%	-24%	-17%	-8%	2%	-1%	0%	0%

Note: The percentage change is not recorded in the above table for groups with fewer than 10 placed applicants in that cycle or in the 2018 cycle.

A.6 Placed main scheme applicants from the EU - excluding UK: A level results day

All Main scheme placed routes (excluding Adjustment): difference between cycle and 2018 cycle

- Placed (Clearing)
- Placed (Firm)
- Placed (Insurance)
- Placed (Other)



Note: The percentage change is not plotted in the above chart for groups with fewer than 30 placed applicants in any one cycle.

A.7 Placed main scheme applicants from the EU - excluding UK: A level results day

All Main scheme placed routes (excluding Adjustment): applicants at A level results day

Applicant type	Status	2010	2011	2012	2013	2014	2015	2016	2017	2018	2019
Main scheme	Placed (Clearing)	180	140	180	240	230	360	410	510	460	500
	Placed (Firm)	17,750	19,200	16,640	17,710	19,250	21,290	23,500	22,680	22,980	22,780
	Placed (Insurance)	1,090	1,250	1,100	1,210	1,370	1,560	1,750	1,720	1,760	1,830
	Placed (Other)	1,060	1,070	790	880	860	900	1,060	1,020	1,040	1,140

A.8 Placed main scheme applicants from the EU - excluding UK: A level results day

All Main scheme placed routes (excluding Adjustment): difference between cycle and 2018 cycle

Applicant type	Status	2010	2011	2012	2013	2014	2015	2016	2017	2018	2019
Main scheme	Placed (Clearing)	-61%	-70%	-61%	-48%	-49%	-23%	-11%	10%	0%	10%
	Placed (Firm)	-23%	-16%	-28%	-23%	-16%	-7%	2%	-1%	0%	-1%
	Placed (Insurance)	-38%	-29%	-37%	-31%	-22%	-11%	-1%	-2%	0%	4%
	Placed (Other)	2%	3%	-24%	-15%	-17%	-13%	2%	-2%	0%	9%

Note: The percentage change is not recorded in the above table for groups with fewer than 10 placed applicants in that cycle or in the 2018 cycle.

A.9 Main scheme applicants placed through adjustment: A level results day

Placed through adjustment: difference between cycle and 2018 cycle

[Analysis on placed by adjustment available from 16 August 2019]

A.10 Main scheme applicants placed through adjustment: A level results day

Placed through adjustment: applicants at A level results day

[Analysis on placed by adjustment available from 16 August 2019]

A.11 Main scheme applicants placed through adjustment: A level results day

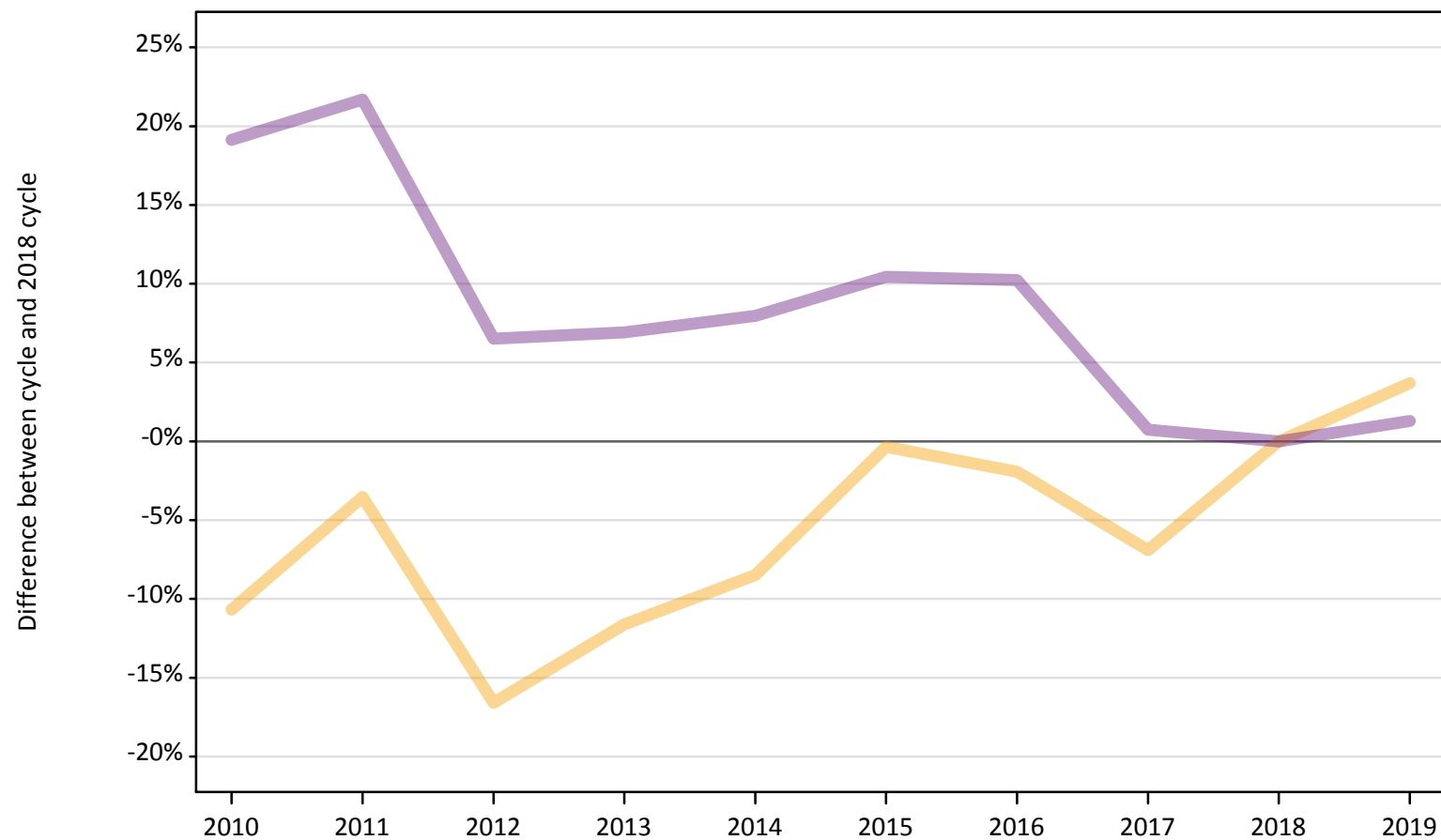
Placed through adjustment: difference between cycle and 2018 cycle

[Analysis on placed by adjustment available from 16 August 2019]

A.12 Main scheme applicants not currently placed from the EU - excluding UK: A level results day

Applicants in unplaced states: difference between cycle and 2018 cycle

— Holding offer
— Free to be placed in Clearing



Note: The percentage change is not plotted in the above chart for groups with fewer than 30 unplaced applicants in any one cycle.

A.13 Main scheme applicants not currently placed from the EU - excluding UK: A level results day

Applicants in unplaced states: applicants at A level results day

Applicant type	Status	2010	2011	2012	2013	2014	2015	2016	2017	2018	2019
Main scheme	Holding offer	8,790	9,490	8,210	8,700	9,010	9,810	9,650	9,160	9,840	10,200
	Free to be placed in Clearing	15,290	15,620	13,670	13,720	13,850	14,170	14,150	12,930	12,830	13,000

A.14 Main scheme applicants not currently placed from the EU - excluding UK: A level results day

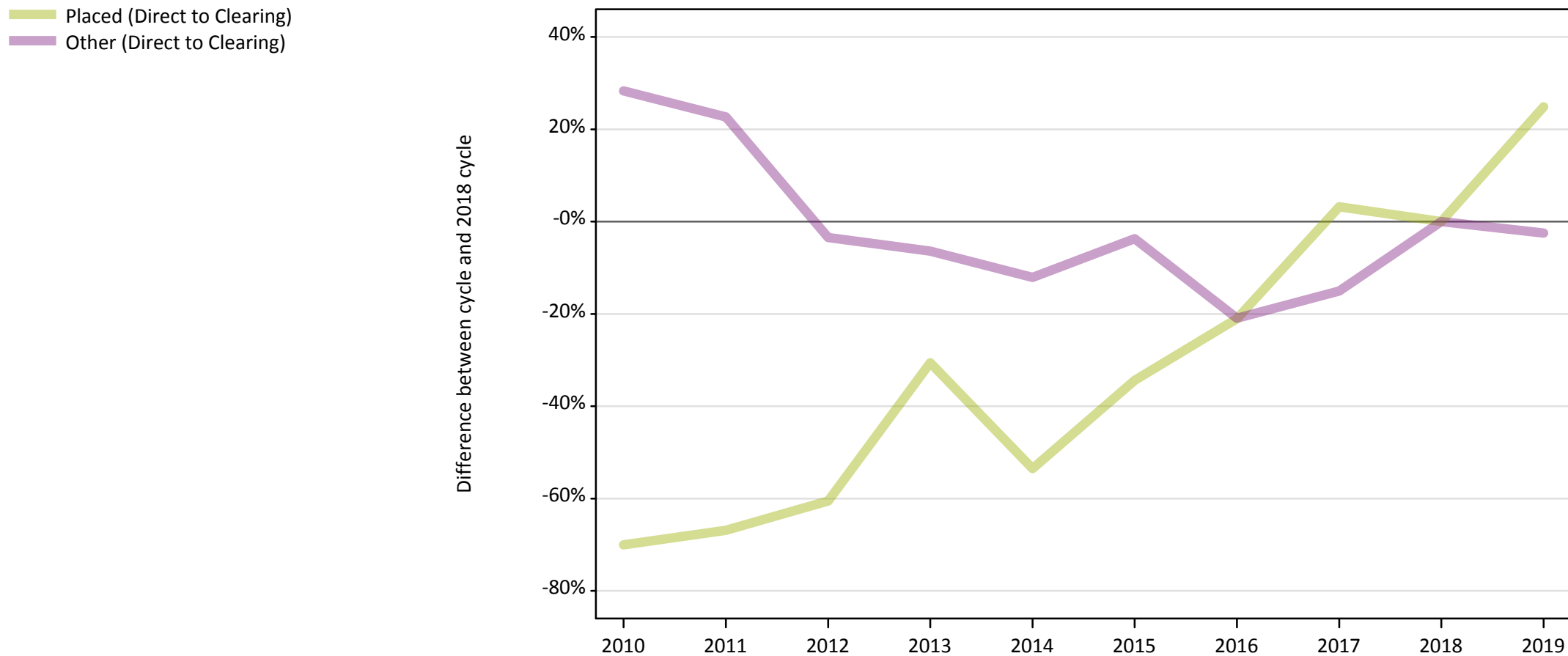
Applicants in unplaced states: difference between cycle and 2018 cycle

Applicant type	Status	2010	2011	2012	2013	2014	2015	2016	2017	2018	2019
Main scheme	Holding offer	-11%	-4%	-17%	-12%	-8%	-0%	-2%	-7%	0%	4%
	Free to be placed in Clearing	19%	22%	7%	7%	8%	10%	10%	1%	0%	1%

Note: The percentage change is not recorded in the above table for groups with fewer than 10 unplaced applicants in that cycle or in the 2018 cycle.

A.15 Direct to Clearing applicants from the EU - excluding UK: A level results day

Direct to Clearing: difference between cycle and 2018 cycle



Note: The percentage change is not plotted in the above chart for groups with fewer than 30 placed applicants in any one cycle.

A.16 Direct to Clearing applicants from the EU - excluding UK: A level results day

Direct to Clearing A level results day

Applicant type	Status	2010	2011	2012	2013	2014	2015	2016	2017	2018	2019
Direct to Clearing	Placed (Direct to Clearing)	50	50	60	110	70	100	120	160	160	200
	Other (Direct to Clearing)	520	500	390	380	360	390	320	350	410	400

A.17 Direct to Clearing applicants from the EU - excluding UK: A level results day

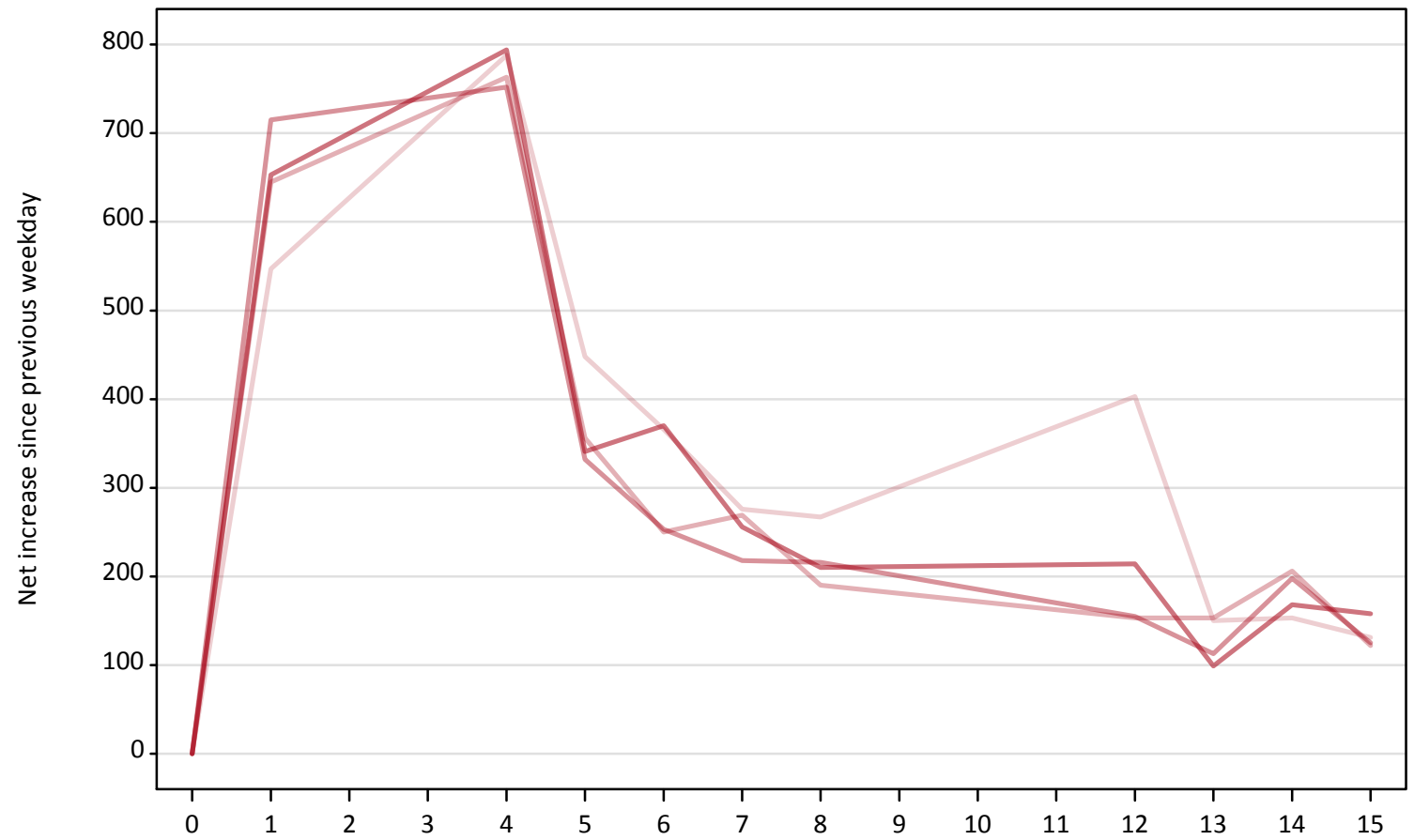
Direct to Clearing: difference between cycle and 2018 cycle

Applicant type	Status	2010	2011	2012	2013	2014	2015	2016	2017	2018	2019
Direct to Clearing	Placed (Direct to Clearing)	-70%	-67%	-61%	-31%	-54%	-34%	-21%	3%	0%	25%
	Other (Direct to Clearing)	28%	23%	-3%	-6%	-12%	-4%	-21%	-15%	0%	-2%

Note: The percentage change is not recorded in the above table for groups with fewer than 10 placed applicants in that cycle or in the 2018 cycle.

A.18 All Placed: Daily net change (from the EU - excluding UK)
Net increase since previous weekday (2019 cycle up to A level results day)

- 2015
- 2016
- 2017
- 2018
- 2019

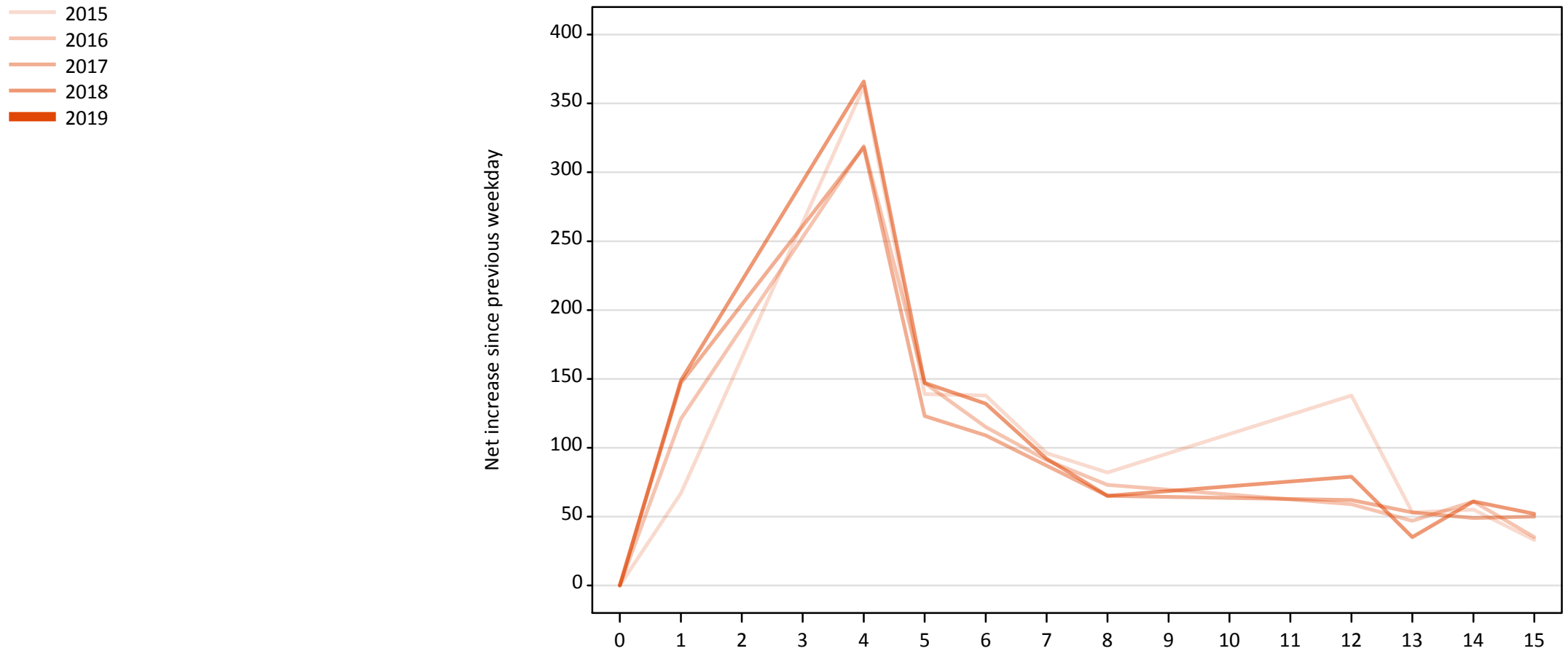


A.19 All Placed: Daily net change (from the EU - excluding UK)

Net increase since previous weekday (2019 cycle up to A level results day)

Applicant status, days since A level results day		2015	2016	2017	2018	2019
All Placed	0	0	0	0	0	0
	1	550	650	720	650	
	4	790	760	750	790	
	5	450	360	330	340	
	6	370	250	250	370	
	7	280	270	220	260	
	8	270	190	220	210	
	12	400	150	160	210	
	13	150	150	110	100	
	14	150	210	200	170	
	15	130	120	130	160	

A.20 Placed through Clearing only: Daily net change (from the EU - excluding UK)
Net increase since previous weekday (2019 cycle up to A level results day)

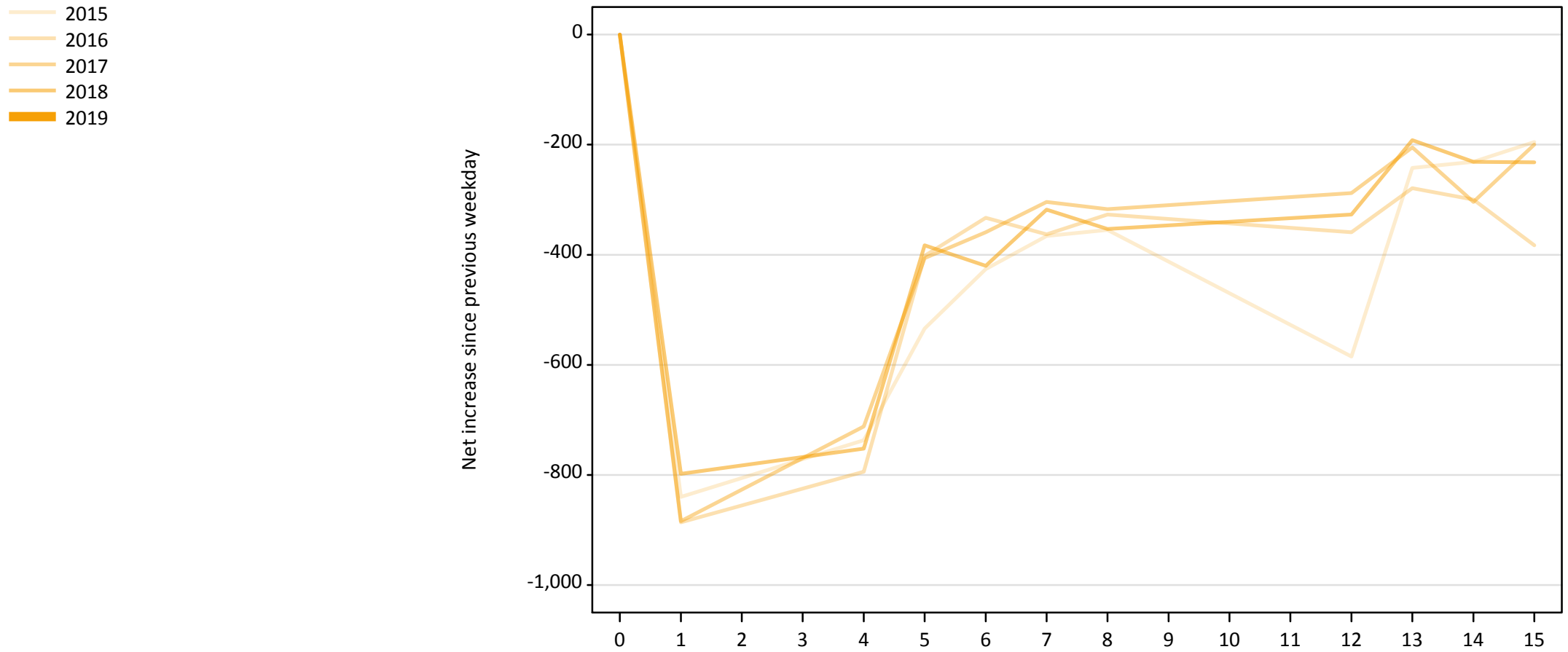


A.21 Placed through Clearing only: Daily net change (from the EU - excluding UK)

Net increase since previous weekday (2019 cycle up to A level results day)

Applicant status, days since A level results day		2015	2016	2017	2018	2019
Placed through Clearing only	0	0	0	0	0	0
	1	70	120	150	150	
	4	360	320	320	370	
	5	140	150	120	150	
	6	140	120	110	130	
	7	100	90	90	90	
	8	80	70	70	70	
	12	140	60	60	80	
	13	50	50	50	40	
	14	60	60	50	60	
	15	30	40	50	50	

A.22 Holding Offer: Daily net change (from the EU - excluding UK)
Net increase since previous weekday (2019 cycle up to A level results day)



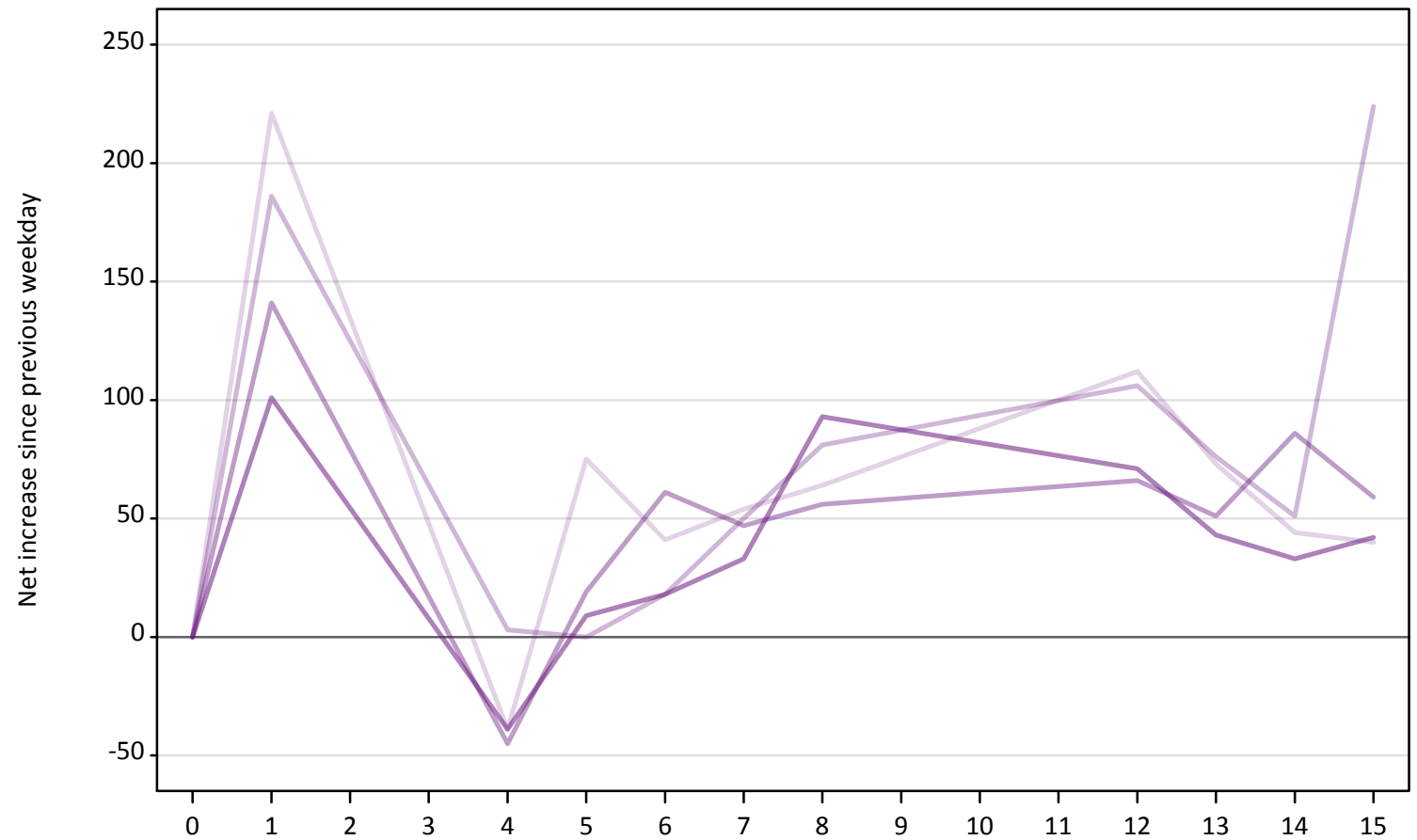
A.23 Holding Offer: Daily net change (from the EU - excluding UK)

Net increase since previous weekday (2019 cycle up to A level results day)

Applicant status, days since A level results day		2015	2016	2017	2018	2019
Holding Offer	0	0	0	0	0	0
	1	-840	-890	-880	-800	
	4	-740	-790	-710	-750	
	5	-530	-400	-410	-380	
	6	-430	-330	-360	-420	
	7	-370	-360	-300	-320	
	8	-360	-330	-320	-350	
	12	-590	-360	-290	-330	
	13	-240	-280	-210	-190	
	14	-230	-300	-300	-230	
	15	-200	-380	-200	-230	

A.24 Free to be placed in Clearing: Daily net change (from the EU - excluding UK)
Net increase since previous weekday (2019 cycle up to A level results day)

- 2015
- 2016
- 2017
- 2018
- 2019



A.25 Free to be placed in Clearing: Daily net change (from the EU - excluding UK)

Net increase since previous weekday (2019 cycle up to A level results day)

Applicant status, days since A level results day		2015	2016	2017	2018	2019
Free to be placed in Clearing	0	0	0	0	0	0
	1	220	190	140	100	
	4	-40	0	-50	-40	
	5	80	0	20	10	
	6	40	20	60	20	
	7	50	50	50	30	
	8	60	80	60	90	
	12	110	110	70	70	
	13	70	80	50	40	
	14	40	50	90	30	
	15	40	220	60	40	