

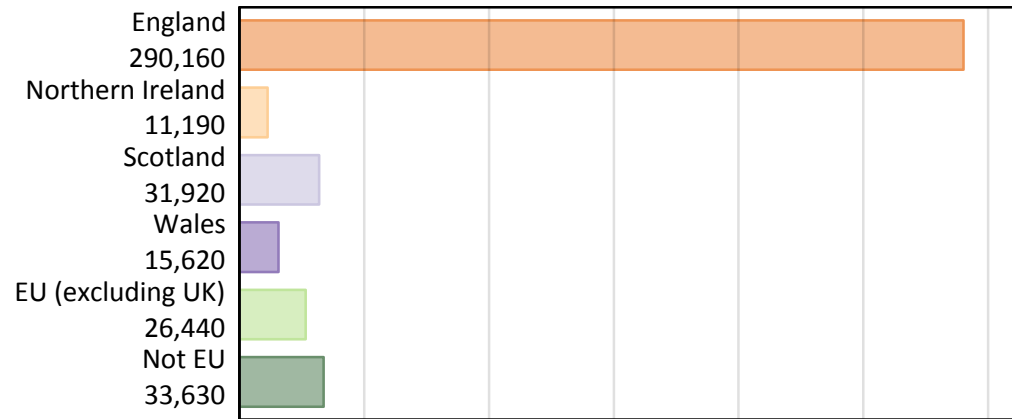
Daily Clearing Analysis: Country

Analysis at 00:05 on Thursday 15 August 2019 (A level results day)

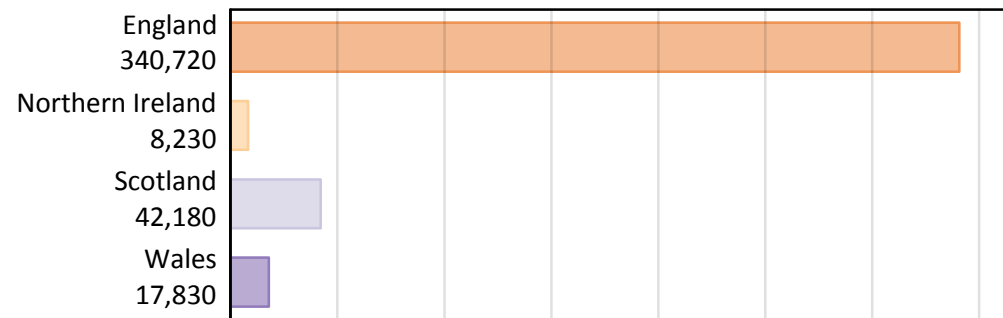
B.1 Placed applicants by country of provider and domicile, 2019 cycle

Domicile of applicant	Country of provider				
	England	Northern Ireland	Scotland	Wales	UK
England	278,660	230	3,920	7,350	290,160
Northern Ireland	2,850	7,410	820	110	11,190
Scotland	1,350	20	30,530	20	31,920
Wales	6,960	10	120	8,530	15,620
EU (excluding UK)	21,500	350	3,690	900	26,440
Not EU	29,400	210	3,100	920	33,630
All	340,720	8,230	42,180	17,830	408,960

B.2 Placed applicants by domicile group



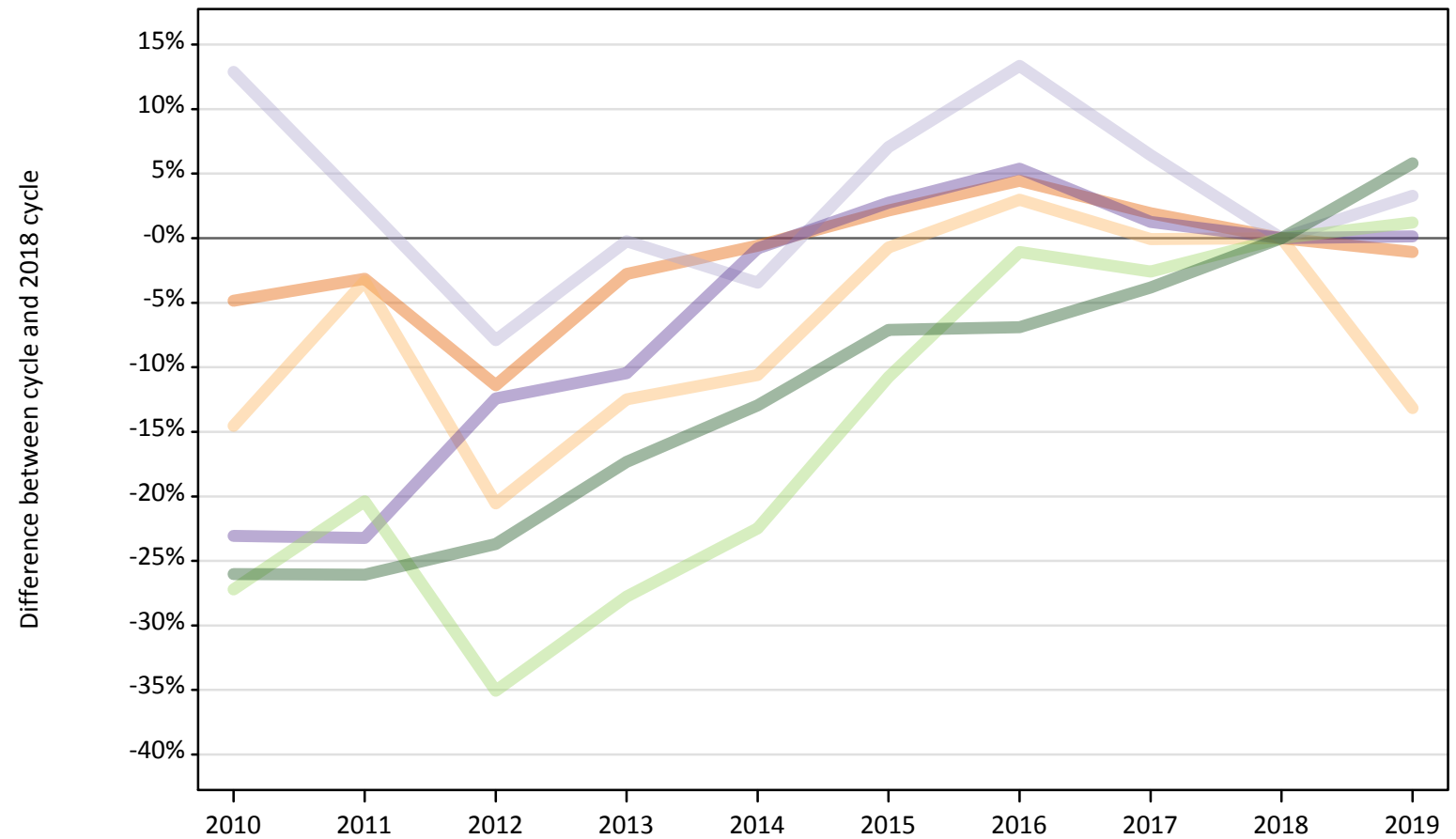
B.3 Placed applicants by country of provider



B.4 Placed applicants at A level results day: providers in England

Selected applicant domiciles: difference between cycle and 2018 cycle (at A level results day)

- England
- Northern Ireland
- Scotland
- Wales
- EU (excluding UK)
- Not EU



Note: The percentage change is not plotted in the above chart for groups with fewer than 30 placed applicants in any one cycle.

B.5 Placed applicants at A level results day: providers in England

Placed applicants by domicile (at A level results day)

Domicile of applicant	2010	2011	2012	2013	2014	2015	2016	2017	2018	2019
England	267,970	272,770	249,570	273,810	279,980	287,690	294,210	287,100	281,640	278,660
Northern Ireland	2,800	3,170	2,600	2,870	2,930	3,250	3,380	3,280	3,280	2,850
Scotland	1,470	1,340	1,200	1,300	1,260	1,400	1,480	1,390	1,300	1,350
Wales	5,350	5,340	6,090	6,230	6,900	7,150	7,330	7,040	6,950	6,960
EU (excluding UK)	15,460	16,910	13,790	15,340	16,470	18,960	21,010	20,690	21,240	21,500
Not EU	20,560	20,550	21,210	22,980	24,190	25,820	25,870	26,730	27,790	29,400

B.6 Placed applicants at A level results day: providers in England

Selected applicant domiciles: difference between cycle and 2018 cycle (at A level results day)

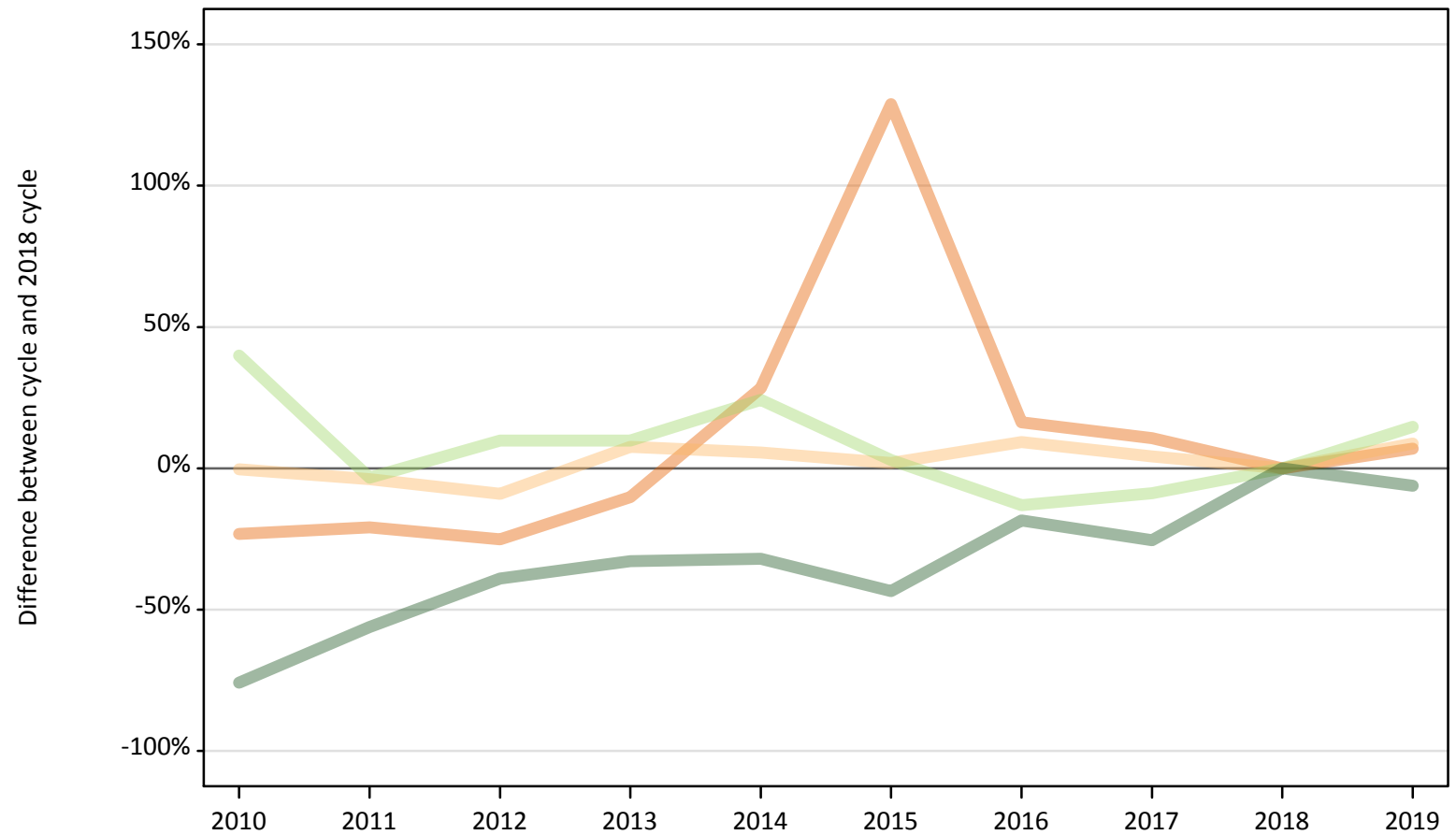
Domicile of applicant	2010	2011	2012	2013	2014	2015	2016	2017	2018	2019
England	-5%	-3%	-11%	-3%	-1%	2%	4%	2%	0%	-1%
Northern Ireland	-15%	-3%	-21%	-12%	-11%	-1%	3%	-0%	0%	-13%
Scotland	13%	3%	-8%	-0%	-3%	7%	13%	6%	0%	3%
Wales	-23%	-23%	-12%	-10%	-1%	3%	5%	1%	0%	0%
EU (excluding UK)	-27%	-20%	-35%	-28%	-22%	-11%	-1%	-3%	0%	1%
Not EU	-26%	-26%	-24%	-17%	-13%	-7%	-7%	-4%	0%	6%

Note: The percentage change is not recorded in the above table for groups with fewer than 10 placed applicants in that cycle or in the 2018 cycle.

B.7 Placed applicants at A level results day: providers in Northern Ireland

Selected applicant domiciles: difference between cycle and 2018 cycle (at A level results day)

- England
- Northern Ireland
- Scotland
- Wales
- EU (excluding UK)
- Not EU



Note: The percentage change is not plotted in the above chart for groups with fewer than 30 placed applicants in any one cycle.

B.8 Placed applicants at A level results day: providers in Northern Ireland

Placed applicants by domicile (at A level results day)

Domicile of applicant	2010	2011	2012	2013	2014	2015	2016	2017	2018	2019
England	170	170	160	190	280	490	250	240	220	230
Northern Ireland	6,790	6,550	6,200	7,330	7,200	6,940	7,450	7,100	6,820	7,410
Scotland	20	20	20	10	20	20	10	30	20	20
Wales	10	10	0	0	10	10	10	10	10	10
EU (excluding UK)	430	300	340	340	380	320	270	280	310	350
Not EU	60	100	140	150	160	130	190	170	230	210

B.9 Placed applicants at A level results day: providers in Northern Ireland

Selected applicant domiciles: difference between cycle and 2018 cycle (at A level results day)

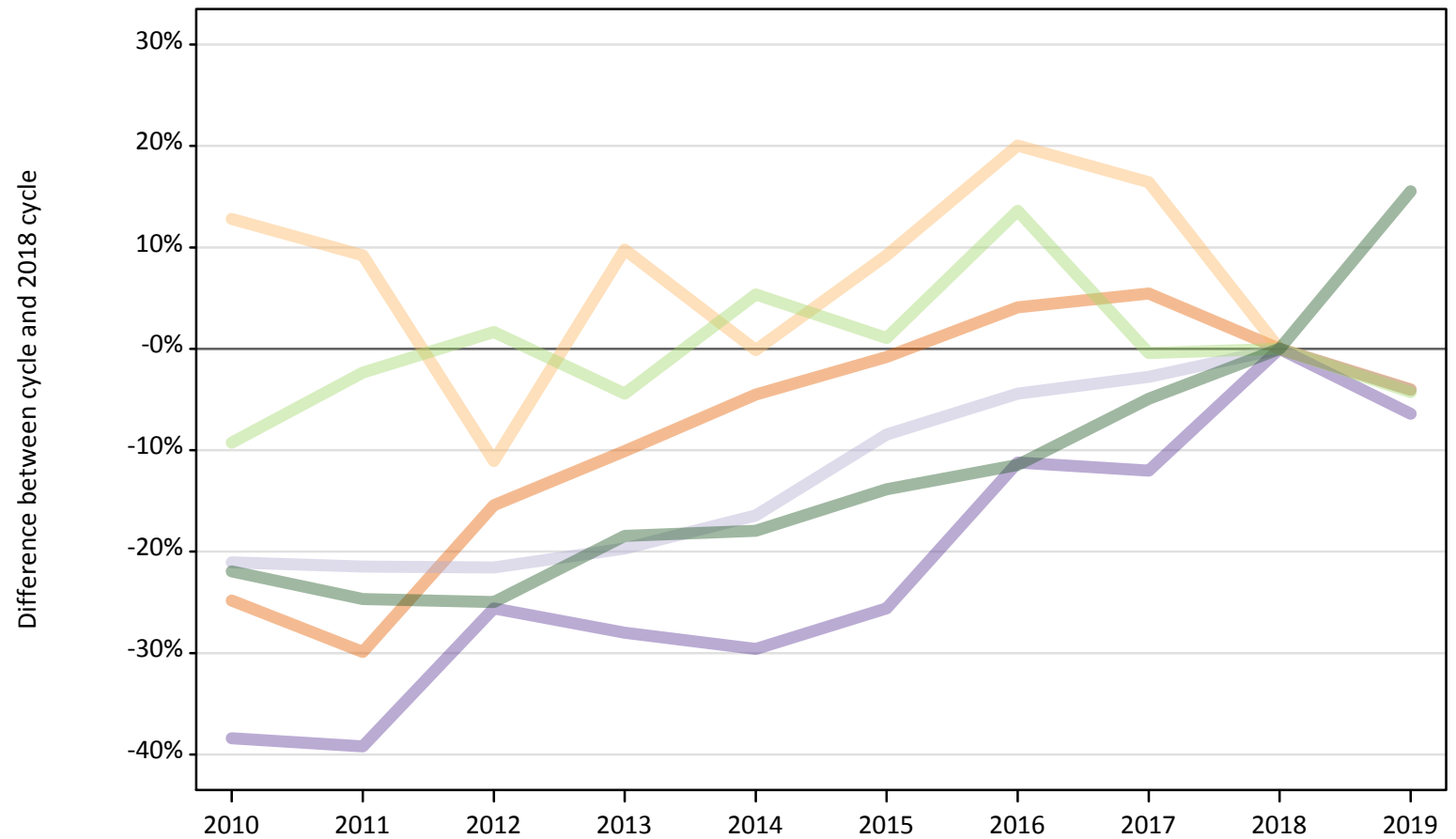
Domicile of applicant	2010	2011	2012	2013	2014	2015	2016	2017	2018	2019
England	-23%	-21%	-25%	-10%	28%	129%	16%	11%	0%	7%
Northern Ireland	-0%	-4%	-9%	8%	6%	2%	9%	4%	0%	9%
Scotland	-22%	-26%	0%	-48%	-35%	-35%	-48%	22%	0%	-30%
Wales								20%	0%	
EU (excluding UK)	40%	-3%	10%	10%	24%	3%	-13%	-9%	0%	15%
Not EU	-76%	-56%	-39%	-33%	-32%	-43%	-18%	-25%	0%	-6%

Note: The percentage change is not recorded in the above table for groups with fewer than 10 placed applicants in that cycle or in the 2018 cycle.

B.10 Placed applicants at A level results day: providers in Scotland

Selected applicant domiciles: difference between cycle and 2018 cycle (at A level results day)

- England
- Northern Ireland
- Scotland
- Wales
- EU (excluding UK)
- Not EU



Note: The percentage change is not plotted in the above chart for groups with fewer than 30 placed applicants in any one cycle.

B.11 Placed applicants at A level results day: providers in Scotland

Placed applicants by domicile (at A level results day)

Domicile of applicant	2010	2011	2012	2013	2014	2015	2016	2017	2018	2019
England	3,070	2,860	3,450	3,670	3,900	4,050	4,250	4,300	4,080	3,920
Northern Ireland	970	940	760	940	860	940	1,030	1,000	860	820
Scotland	25,110	24,980	24,950	25,550	26,590	29,120	30,400	30,930	31,810	30,530
Wales	80	80	90	90	90	90	110	110	130	120
EU (excluding UK)	3,500	3,770	3,920	3,690	4,070	3,900	4,380	3,840	3,860	3,690
Not EU	2,090	2,020	2,010	2,190	2,200	2,310	2,370	2,550	2,680	3,100

B.12 Placed applicants at A level results day: providers in Scotland

Selected applicant domiciles: difference between cycle and 2018 cycle (at A level results day)

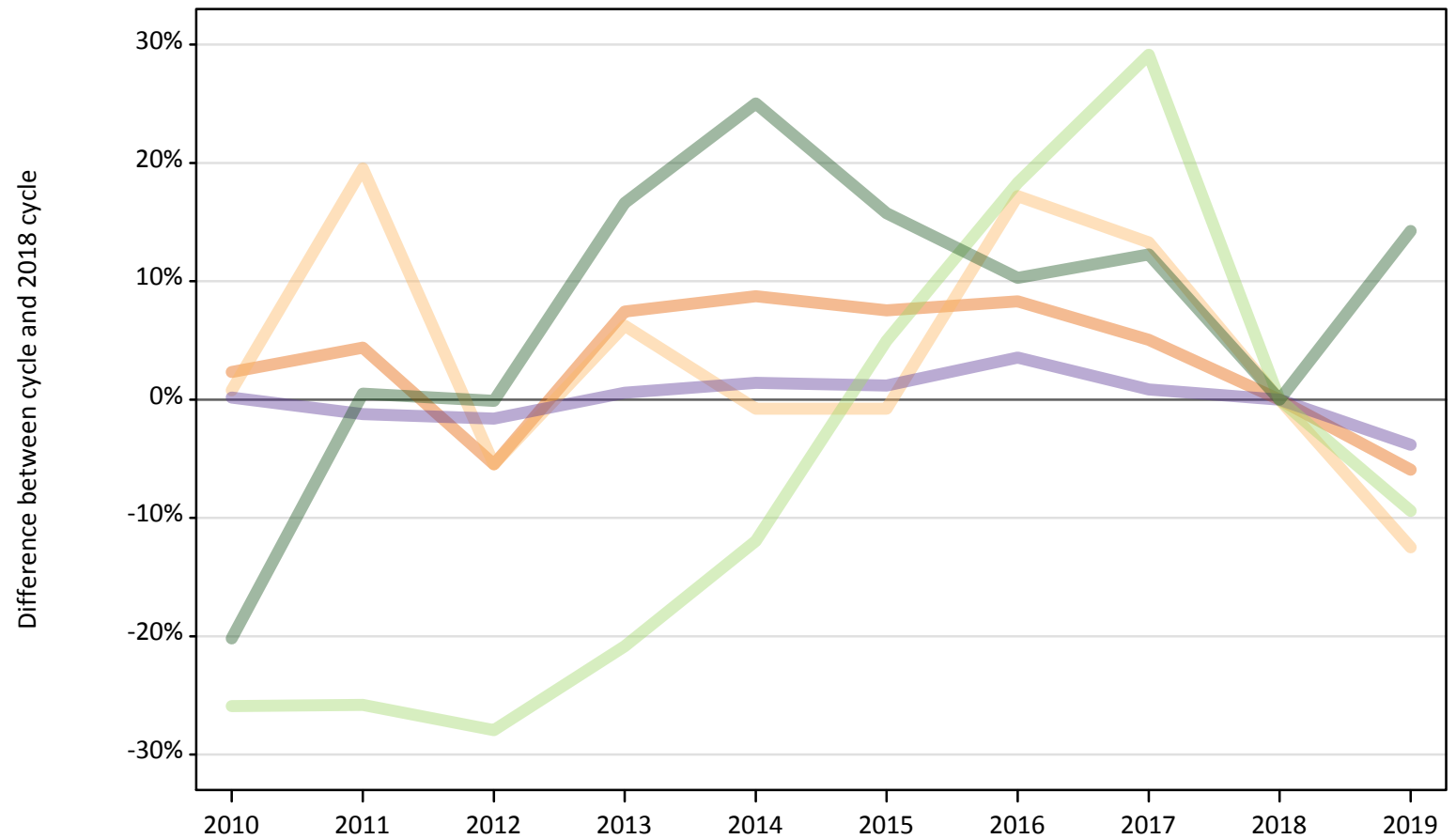
Domicile of applicant	2010	2011	2012	2013	2014	2015	2016	2017	2018	2019
England	-25%	-30%	-15%	-10%	-5%	-1%	4%	5%	0%	-4%
Northern Ireland	13%	9%	-11%	10%	-0%	9%	20%	16%	0%	-4%
Scotland	-21%	-21%	-22%	-20%	-16%	-8%	-4%	-3%	0%	-4%
Wales	-38%	-39%	-26%	-28%	-30%	-26%	-11%	-12%	0%	-6%
EU (excluding UK)	-9%	-2%	2%	-4%	5%	1%	14%	-0%	0%	-4%
Not EU	-22%	-25%	-25%	-18%	-18%	-14%	-11%	-5%	0%	16%

Note: The percentage change is not recorded in the above table for groups with fewer than 10 placed applicants in that cycle or in the 2018 cycle.

B.13 Placed applicants at A level results day: providers in Wales

Selected applicant domiciles: difference between cycle and 2018 cycle (at A level results day)

- England
- Northern Ireland
- Scotland
- Wales
- EU (excluding UK)
- Not EU



Note: The percentage change is not plotted in the above chart for groups with fewer than 30 placed applicants in any one cycle.

B.14 Placed applicants at A level results day: providers in Wales

Placed applicants by domicile (at A level results day)

Domicile of applicant	2010	2011	2012	2013	2014	2015	2016	2017	2018	2019
England	8,000	8,160	7,390	8,400	8,500	8,410	8,470	8,210	7,820	7,350
Northern Ireland	130	150	120	140	130	130	150	150	130	110
Scotland	40	50	40	50	50	40	40	40	40	20
Wales	8,880	8,760	8,720	8,920	8,990	8,970	9,180	8,940	8,870	8,530
EU (excluding UK)	730	730	710	780	870	1,040	1,170	1,280	990	900
Not EU	640	810	810	940	1,010	930	890	910	810	920

B.15 Placed applicants at A level results day: providers in Wales

Selected applicant domiciles: difference between cycle and 2018 cycle (at A level results day)

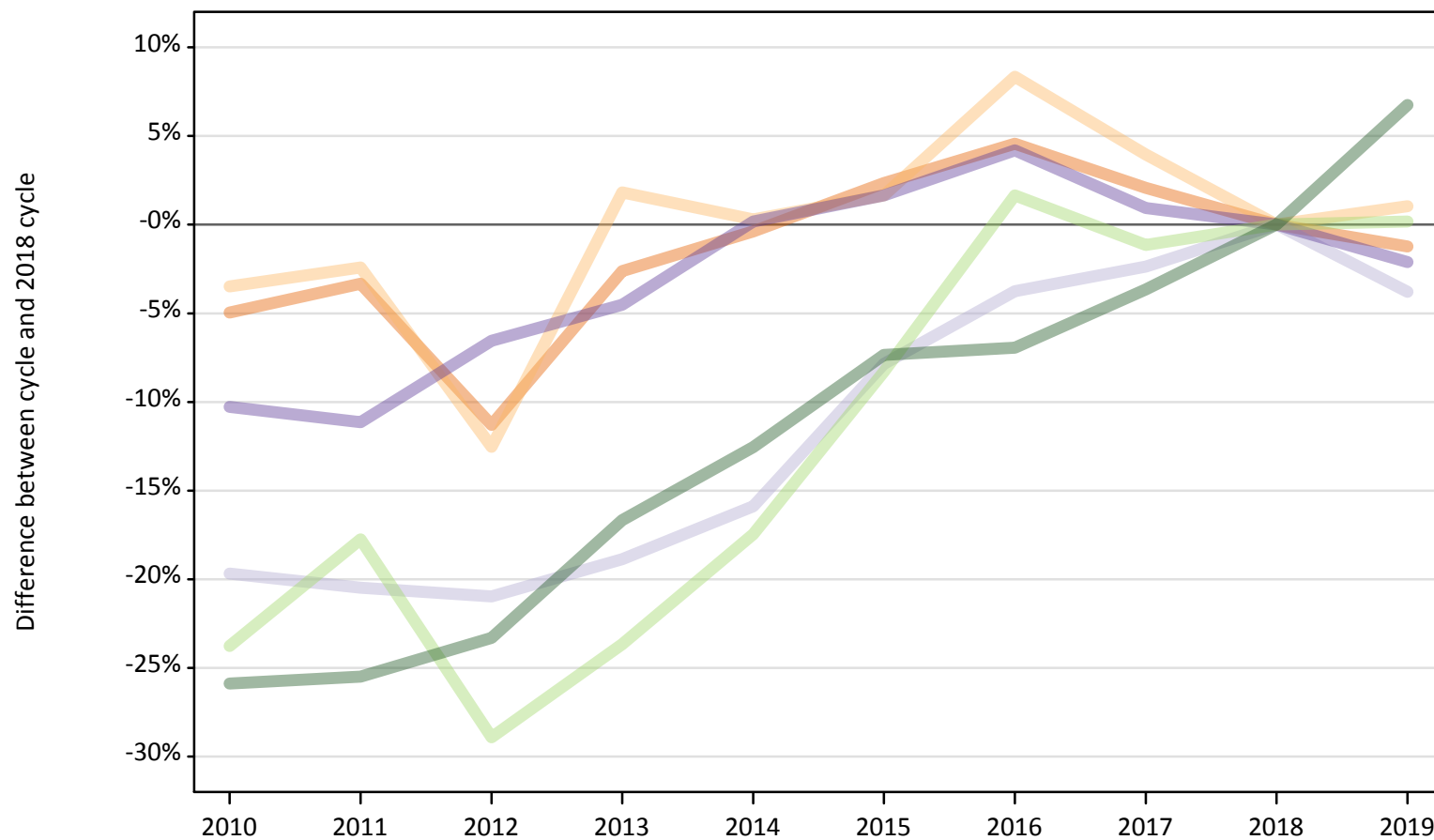
Domicile of applicant	2010	2011	2012	2013	2014	2015	2016	2017	2018	2019
England	2%	4%	-5%	7%	9%	8%	8%	5%	0%	-6%
Northern Ireland	1%	20%	-5%	6%	-1%	-1%	17%	13%	0%	-13%
Scotland	16%	24%	14%	46%	30%	3%	-5%	19%	0%	-41%
Wales	0%	-1%	-2%	1%	1%	1%	4%	1%	0%	-4%
EU (excluding UK)	-26%	-26%	-28%	-21%	-12%	5%	18%	29%	0%	-9%
Not EU	-20%	0%	-0%	17%	25%	16%	10%	12%	0%	14%

Note: The percentage change is not recorded in the above table for groups with fewer than 10 placed applicants in that cycle or in the 2018 cycle.

B.16 Placed applicants at A level results day: providers in the UK

Selected applicant domiciles: difference between cycle and 2018 cycle (at A level results day)

- England
- Northern Ireland
- Scotland
- Wales
- EU (excluding UK)
- Not EU



Note: The percentage change is not plotted in the above chart for groups with fewer than 30 placed applicants in any one cycle.

B.17 Placed applicants at A level results day: providers in the UK

Placed applicants by domicile (at A level results day)

Domicile of applicant	2010	2011	2012	2013	2014	2015	2016	2017	2018	2019
England	279,200	283,960	260,570	286,070	292,650	300,630	307,170	299,850	293,750	290,160
Northern Ireland	10,690	10,810	9,690	11,280	11,110	11,260	12,000	11,520	11,080	11,190
Scotland	26,640	26,380	26,220	26,910	27,910	30,570	31,930	32,390	33,180	31,920
Wales	14,310	14,180	14,910	15,240	15,980	16,220	16,630	16,110	15,960	15,620
EU (excluding UK)	20,120	21,710	18,760	20,150	21,790	24,210	26,830	26,090	26,400	26,440
Not EU	23,350	23,480	24,160	26,250	27,560	29,190	29,320	30,350	31,510	33,630

B.18 Placed applicants at A level results day: providers in the UK

Selected applicant domiciles: difference between cycle and 2018 cycle (at A level results day)

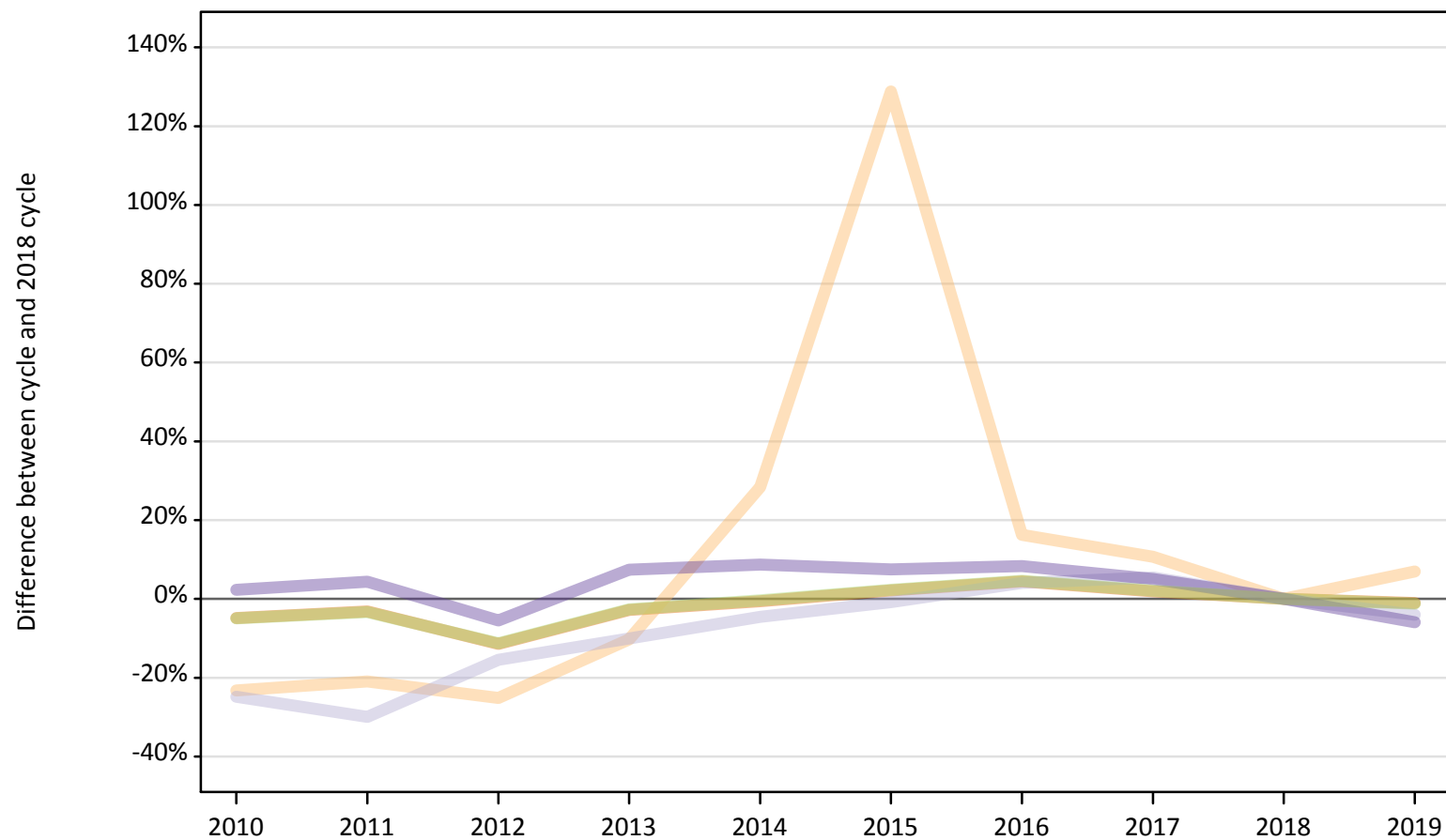
Domicile of applicant	2010	2011	2012	2013	2014	2015	2016	2017	2018	2019
England	-5%	-3%	-11%	-3%	-0%	2%	5%	2%	0%	-1%
Northern Ireland	-3%	-2%	-13%	2%	0%	2%	8%	4%	0%	1%
Scotland	-20%	-20%	-21%	-19%	-16%	-8%	-4%	-2%	0%	-4%
Wales	-10%	-11%	-7%	-5%	0%	2%	4%	1%	0%	-2%
EU (excluding UK)	-24%	-18%	-29%	-24%	-17%	-8%	2%	-1%	0%	0%
Not EU	-26%	-25%	-23%	-17%	-13%	-7%	-7%	-4%	0%	7%

Note: The percentage change is not recorded in the above table for groups with fewer than 10 placed applicants in that cycle or in the 2018 cycle.

B.19 Placed applicants at A level results day: domiciled in England

Selected provider countries: difference between cycle and 2018 cycle (at A level results day)

- England
- Northern Ireland
- Scotland
- Wales
- UK



Note: The percentage change is not plotted in the above chart for groups with fewer than 30 placed applicants in any one cycle.

B.20 Placed applicants at A level results day: domiciled in England

Placed applicants by provider country (at A level results day)

Country of provider	2010	2011	2012	2013	2014	2015	2016	2017	2018	2019
England	267,970	272,770	249,570	273,810	279,980	287,690	294,210	287,100	281,640	278,660
Northern Ireland	170	170	160	190	280	490	250	240	220	230
Scotland	3,070	2,860	3,450	3,670	3,900	4,050	4,250	4,300	4,080	3,920
Wales	8,000	8,160	7,390	8,400	8,500	8,410	8,470	8,210	7,820	7,350
UK	279,200	283,960	260,570	286,070	292,650	300,630	307,170	299,850	293,750	290,160

B.21 Placed applicants at A level results day: domiciled in England

Selected provider countries: difference between cycle and 2018 cycle (at A level results day)

Country of provider	2010	2011	2012	2013	2014	2015	2016	2017	2018	2019
England	-5%	-3%	-11%	-3%	-1%	2%	4%	2%	0%	-1%
Northern Ireland	-23%	-21%	-25%	-10%	28%	129%	16%	11%	0%	7%
Scotland	-25%	-30%	-15%	-10%	-5%	-1%	4%	5%	0%	-4%
Wales	2%	4%	-5%	7%	9%	8%	8%	5%	0%	-6%
UK	-5%	-3%	-11%	-3%	-0%	2%	5%	2%	0%	-1%

Note: The percentage change is not recorded in the above table for groups with fewer than 10 placed applicants in that cycle or in the 2018 cycle.

B.22 Placed applicants at A level results day: domiciled in Northern Ireland

Selected provider countries: difference between cycle and 2018 cycle (at A level results day)

- England
- Northern Ireland
- Scotland
- Wales
- UK



Note: The percentage change is not plotted in the above chart for groups with fewer than 30 placed applicants in any one cycle.

B.23 Placed applicants at A level results day: domiciled in Northern Ireland

Placed applicants by provider country (at A level results day)

Country of provider	2010	2011	2012	2013	2014	2015	2016	2017	2018	2019
England	2,800	3,170	2,600	2,870	2,930	3,250	3,380	3,280	3,280	2,850
Northern Ireland	6,790	6,550	6,200	7,330	7,200	6,940	7,450	7,100	6,820	7,410
Scotland	970	940	760	940	860	940	1,030	1,000	860	820
Wales	130	150	120	140	130	130	150	150	130	110
UK	10,690	10,810	9,690	11,280	11,110	11,260	12,000	11,520	11,080	11,190

B.24 Placed applicants at A level results day: domiciled in Northern Ireland

Selected provider countries: difference between cycle and 2018 cycle (at A level results day)

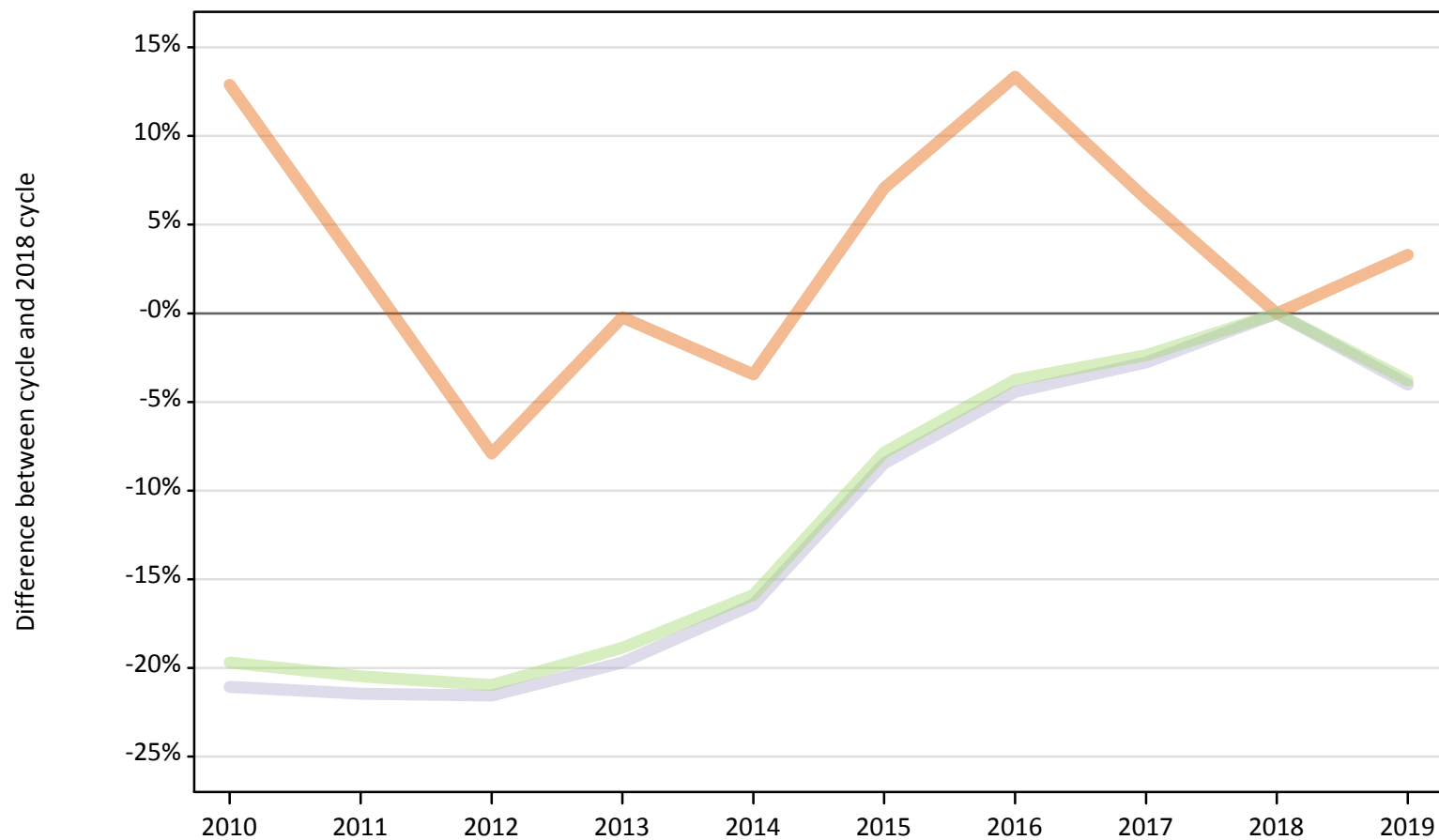
Country of provider	2010	2011	2012	2013	2014	2015	2016	2017	2018	2019
England	-15%	-3%	-21%	-12%	-11%	-1%	3%	-0%	0%	-13%
Northern Ireland	-0%	-4%	-9%	8%	6%	2%	9%	4%	0%	9%
Scotland	13%	9%	-11%	10%	-0%	9%	20%	16%	0%	-4%
Wales	1%	20%	-5%	6%	-1%	-1%	17%	13%	0%	-13%
UK	-3%	-2%	-13%	2%	0%	2%	8%	4%	0%	1%

Note: The percentage change is not recorded in the above table for groups with fewer than 10 placed applicants in that cycle or in the 2018 cycle.

B.25 Placed applicants at A level results day: domiciled in Scotland

Selected provider countries: difference between cycle and 2018 cycle (at A level results day)

- England
- Northern Ireland
- Scotland
- Wales
- UK



Note: The percentage change is not plotted in the above chart for groups with fewer than 30 placed applicants in any one cycle.

B.26 Placed applicants at A level results day: domiciled in Scotland

Placed applicants by provider country (at A level results day)

Country of provider	2010	2011	2012	2013	2014	2015	2016	2017	2018	2019
England	1,470	1,340	1,200	1,300	1,260	1,400	1,480	1,390	1,300	1,350
Northern Ireland	20	20	20	10	20	20	10	30	20	20
Scotland	25,110	24,980	24,950	25,550	26,590	29,120	30,400	30,930	31,810	30,530
Wales	40	50	40	50	50	40	40	40	40	20
UK	26,640	26,380	26,220	26,910	27,910	30,570	31,930	32,390	33,180	31,920

B.27 Placed applicants at A level results day: domiciled in Scotland

Selected provider countries: difference between cycle and 2018 cycle (at A level results day)

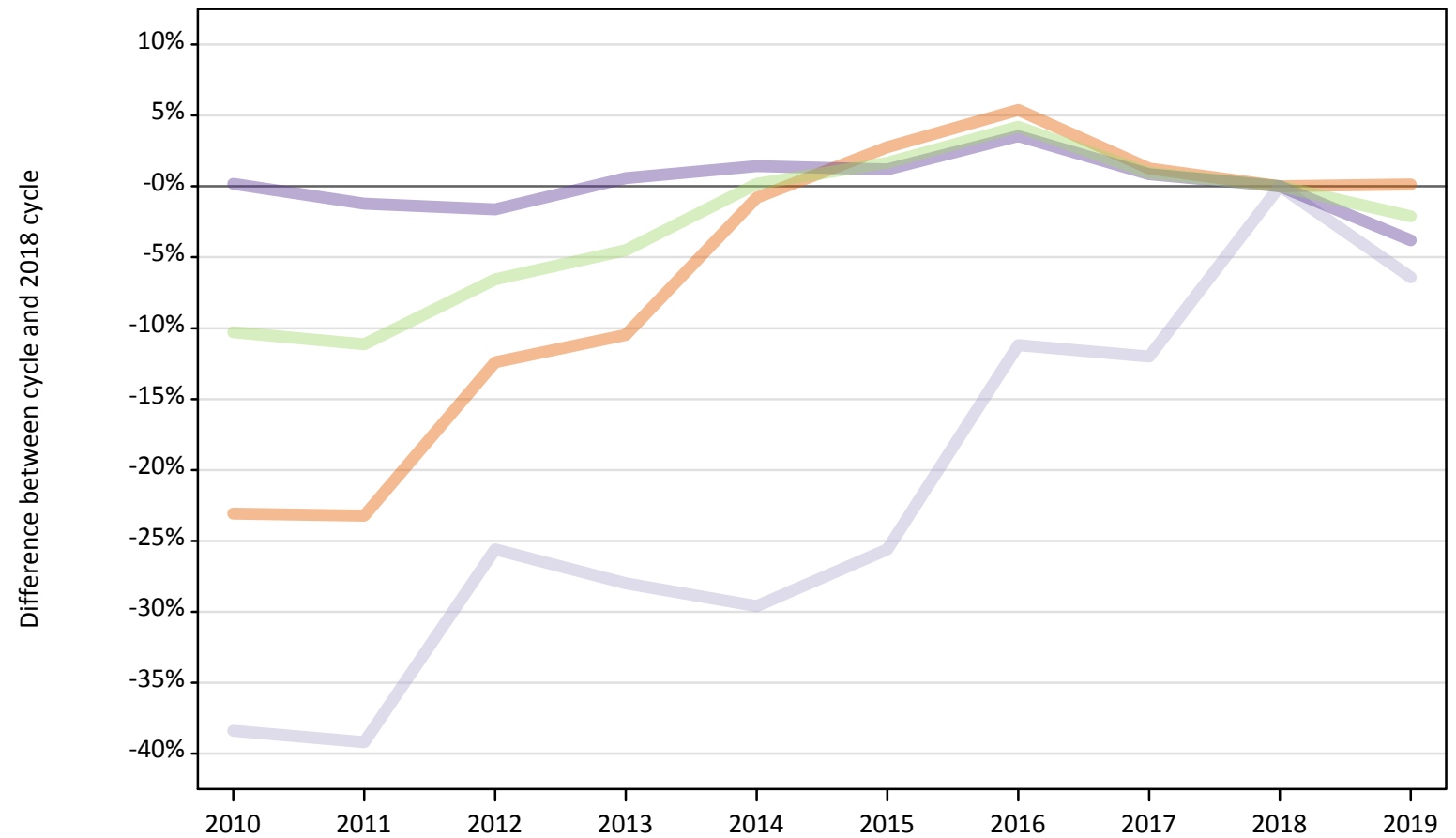
Country of provider	2010	2011	2012	2013	2014	2015	2016	2017	2018	2019
England	13%	3%	-8%	-0%	-3%	7%	13%	6%	0%	3%
Northern Ireland	-22%	-26%	0%	-48%	-35%	-35%	-48%	22%	0%	-30%
Scotland	-21%	-21%	-22%	-20%	-16%	-8%	-4%	-3%	0%	-4%
Wales	16%	24%	14%	46%	30%	3%	-5%	19%	0%	-41%
UK	-20%	-20%	-21%	-19%	-16%	-8%	-4%	-2%	0%	-4%

Note: The percentage change is not recorded in the above table for groups with fewer than 10 placed applicants in that cycle or in the 2018 cycle.

B.28 Placed applicants at A level results day: domiciled in Wales

Selected provider countries: difference between cycle and 2018 cycle (at A level results day)

- England
- Northern Ireland
- Scotland
- Wales
- UK



Note: The percentage change is not plotted in the above chart for groups with fewer than 30 placed applicants in any one cycle.

B.29 Placed applicants at A level results day: domiciled in Wales

Placed applicants by provider country (at A level results day)

Country of provider	2010	2011	2012	2013	2014	2015	2016	2017	2018	2019
England	5,350	5,340	6,090	6,230	6,900	7,150	7,330	7,040	6,950	6,960
Northern Ireland	10	10	0	0	10	10	10	10	10	10
Scotland	80	80	90	90	90	90	110	110	130	120
Wales	8,880	8,760	8,720	8,920	8,990	8,970	9,180	8,940	8,870	8,530
UK	14,310	14,180	14,910	15,240	15,980	16,220	16,630	16,110	15,960	15,620

B.30 Placed applicants at A level results day: domiciled in Wales

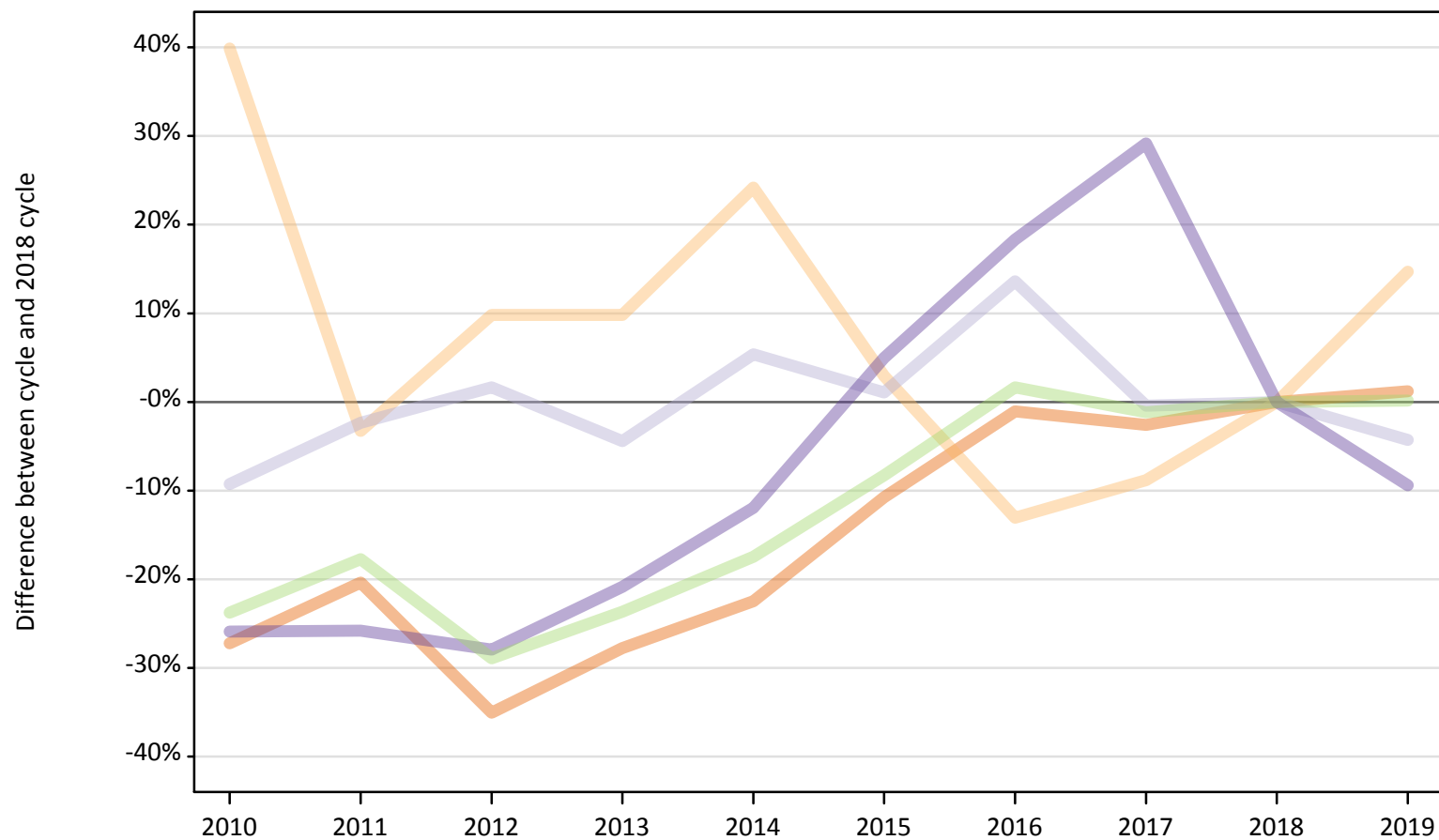
Selected provider countries: difference between cycle and 2018 cycle (at A level results day)

Country of provider	2010	2011	2012	2013	2014	2015	2016	2017	2018	2019
England	-23%	-23%	-12%	-10%	-1%	3%	5%	1%	0%	0%
Northern Ireland								20%	0%	
Scotland	-38%	-39%	-26%	-28%	-30%	-26%	-11%	-12%	0%	-6%
Wales	0%	-1%	-2%	1%	1%	1%	4%	1%	0%	-4%
UK	-10%	-11%	-7%	-5%	0%	2%	4%	1%	0%	-2%

Note: The percentage change is not recorded in the above table for groups with fewer than 10 placed applicants in that cycle or in the 2018 cycle.

B.31 Placed applicants at A level results day: domiciled in EU (excluding UK)
Selected provider countries: difference between cycle and 2018 cycle (at A level results day)

- England
- Northern Ireland
- Scotland
- Wales
- UK



Note: The percentage change is not plotted in the above chart for groups with fewer than 30 placed applicants in any one cycle.

B.32 Placed applicants at A level results day: domiciled in EU (excluding UK)

Placed applicants by provider country (at A level results day)

Country of provider	2010	2011	2012	2013	2014	2015	2016	2017	2018	2019
England	15,460	16,910	13,790	15,340	16,470	18,960	21,010	20,690	21,240	21,500
Northern Ireland	430	300	340	340	380	320	270	280	310	350
Scotland	3,500	3,770	3,920	3,690	4,070	3,900	4,380	3,840	3,860	3,690
Wales	730	730	710	780	870	1,040	1,170	1,280	990	900
UK	20,120	21,710	18,760	20,150	21,790	24,210	26,830	26,090	26,400	26,440

B.33 Placed applicants at A level results day: domiciled in EU (excluding UK)

Selected provider countries: difference between cycle and 2018 cycle (at A level results day)

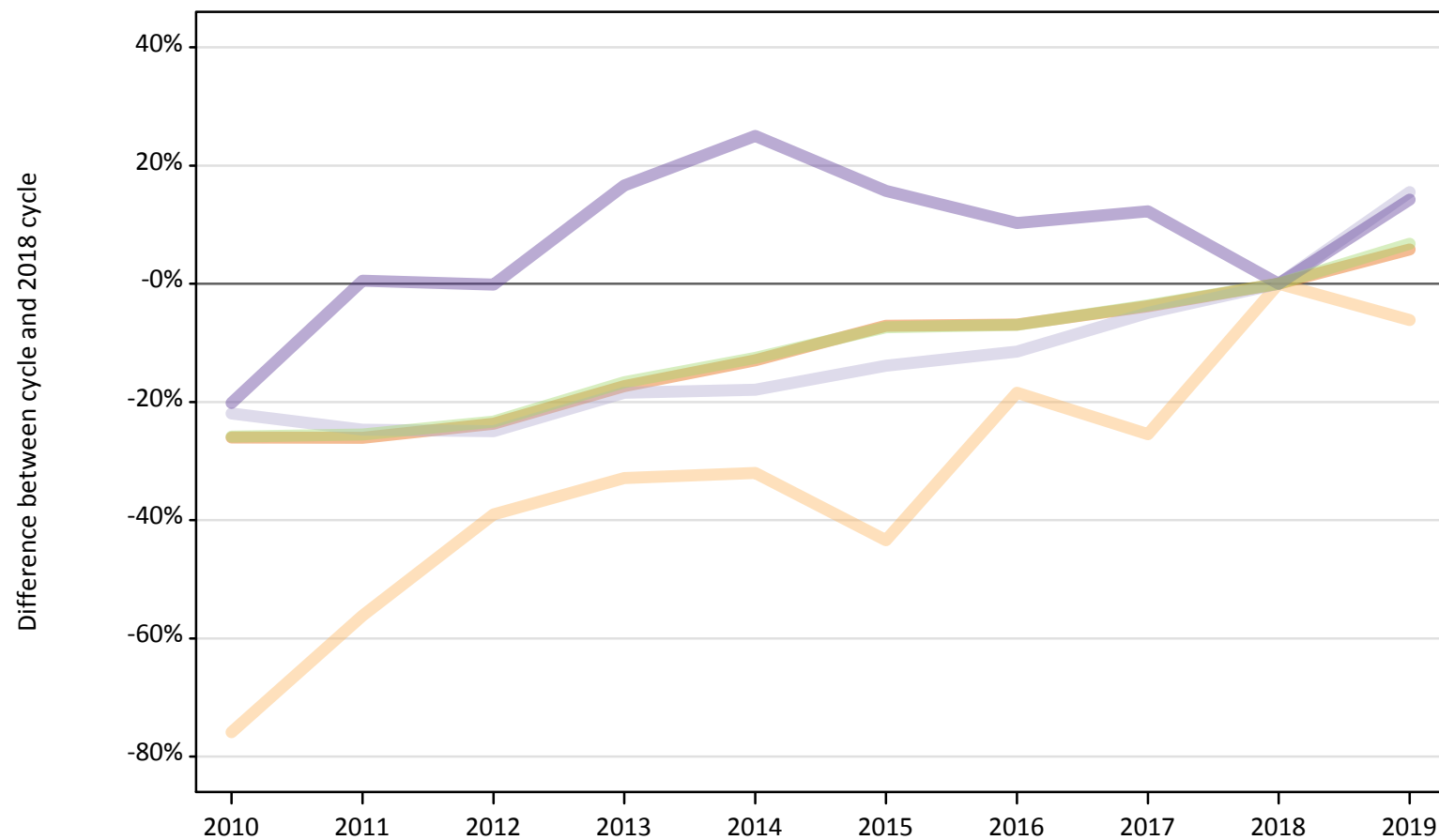
Country of provider	2010	2011	2012	2013	2014	2015	2016	2017	2018	2019
England	-27%	-20%	-35%	-28%	-22%	-11%	-1%	-3%	0%	1%
Northern Ireland	40%	-3%	10%	10%	24%	3%	-13%	-9%	0%	15%
Scotland	-9%	-2%	2%	-4%	5%	1%	14%	-0%	0%	-4%
Wales	-26%	-26%	-28%	-21%	-12%	5%	18%	29%	0%	-9%
UK	-24%	-18%	-29%	-24%	-17%	-8%	2%	-1%	0%	0%

Note: The percentage change is not recorded in the above table for groups with fewer than 10 placed applicants in that cycle or in the 2018 cycle.

B.34 Placed applicants at A level results day: domiciled in Not EU

Selected provider countries: difference between cycle and 2018 cycle (at A level results day)

- England
- Northern Ireland
- Scotland
- Wales
- UK



Note: The percentage change is not plotted in the above chart for groups with fewer than 30 placed applicants in any one cycle.

B.35 Placed applicants at A level results day: domiciled in Not EU

Placed applicants by provider country (at A level results day)

Country of provider	2010	2011	2012	2013	2014	2015	2016	2017	2018	2019
England	20,560	20,550	21,210	22,980	24,190	25,820	25,870	26,730	27,790	29,400
Northern Ireland	60	100	140	150	160	130	190	170	230	210
Scotland	2,090	2,020	2,010	2,190	2,200	2,310	2,370	2,550	2,680	3,100
Wales	640	810	810	940	1,010	930	890	910	810	920
UK	23,350	23,480	24,160	26,250	27,560	29,190	29,320	30,350	31,510	33,630

B.36 Placed applicants at A level results day: domiciled in Not EU

Selected provider countries: difference between cycle and 2018 cycle (at A level results day)

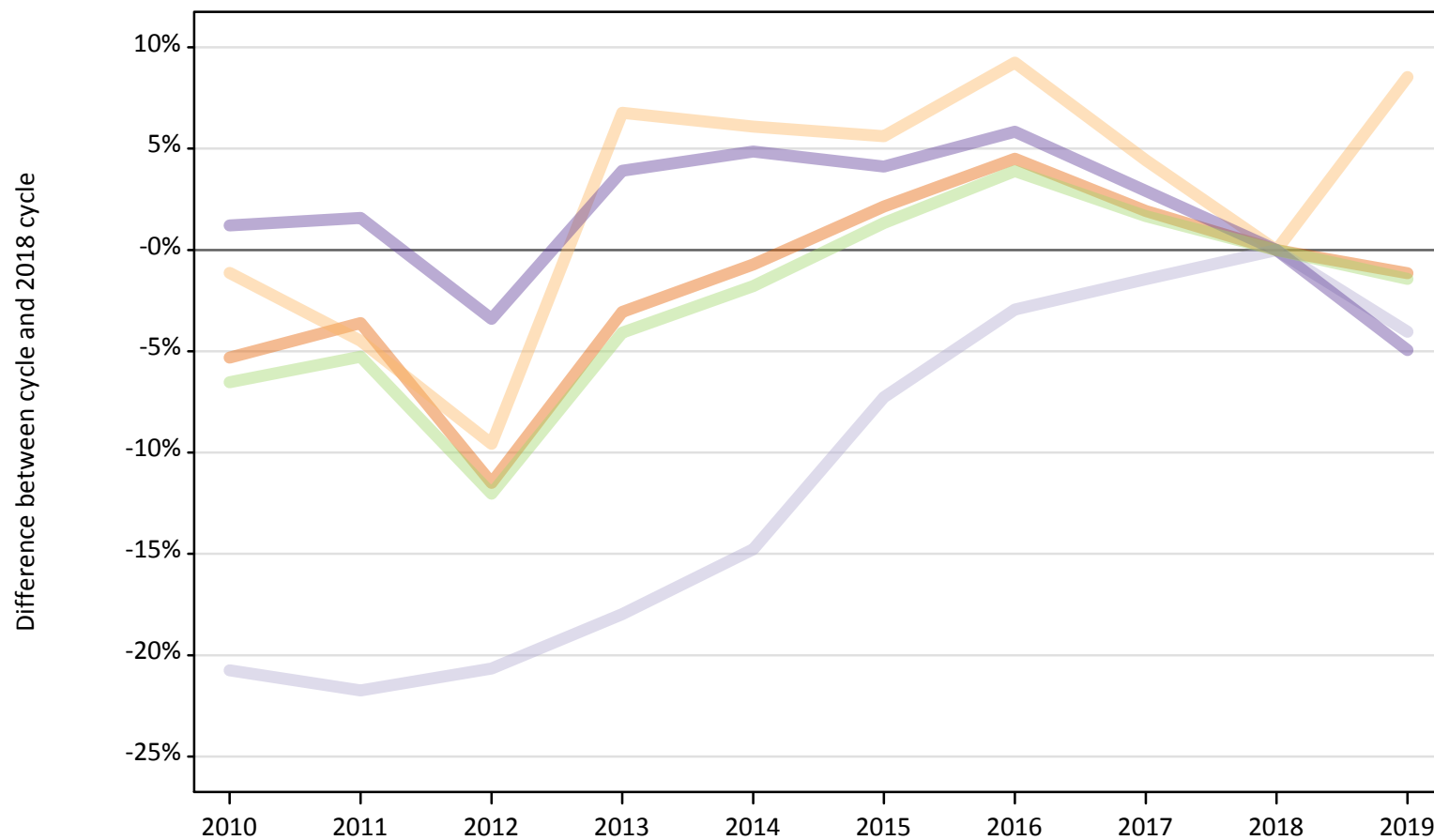
Country of provider	2010	2011	2012	2013	2014	2015	2016	2017	2018	2019
England	-26%	-26%	-24%	-17%	-13%	-7%	-7%	-4%	0%	6%
Northern Ireland	-76%	-56%	-39%	-33%	-32%	-43%	-18%	-25%	0%	-6%
Scotland	-22%	-25%	-25%	-18%	-18%	-14%	-11%	-5%	0%	16%
Wales	-20%	0%	-0%	17%	25%	16%	10%	12%	0%	14%
UK	-26%	-25%	-23%	-17%	-13%	-7%	-7%	-4%	0%	7%

Note: The percentage change is not recorded in the above table for groups with fewer than 10 placed applicants in that cycle or in the 2018 cycle.

B.37 Placed applicants at A level results day: domiciled in UK

Selected provider countries: difference between cycle and 2018 cycle (at A level results day)

- England
- Northern Ireland
- Scotland
- Wales
- UK



Note: The percentage change is not plotted in the above chart for groups with fewer than 30 placed applicants in any one cycle.

B.38 Placed applicants at A level results day: domiciled in UK

Placed applicants by provider country (at A level results day)

Country of provider	2010	2011	2012	2013	2014	2015	2016	2017	2018	2019
England	277,600	282,620	259,470	284,210	291,070	299,480	306,390	298,810	293,180	289,820
Northern Ireland	6,980	6,750	6,390	7,540	7,490	7,460	7,720	7,380	7,060	7,670
Scotland	29,220	28,860	29,260	30,250	31,430	34,200	35,790	36,340	36,870	35,390
Wales	17,050	17,120	16,280	17,510	17,670	17,540	17,830	17,340	16,850	16,020
UK	330,850	335,330	311,390	339,500	347,650	358,680	367,730	359,860	353,960	348,890

B.39 Placed applicants at A level results day: domiciled in UK

Selected provider countries: difference between cycle and 2018 cycle (at A level results day)

Country of provider	2010	2011	2012	2013	2014	2015	2016	2017	2018	2019
England	-5%	-4%	-11%	-3%	-1%	2%	5%	2%	0%	-1%
Northern Ireland	-1%	-4%	-10%	7%	6%	6%	9%	4%	0%	9%
Scotland	-21%	-22%	-21%	-18%	-15%	-7%	-3%	-1%	0%	-4%
Wales	1%	2%	-3%	4%	5%	4%	6%	3%	0%	-5%
UK	-7%	-5%	-12%	-4%	-2%	1%	4%	2%	0%	-1%

Note: The percentage change is not recorded in the above table for groups with fewer than 10 placed applicants in that cycle or in the 2018 cycle.