

## Analysis at 00:05 on Thursday 15 August 2019 (A level results day)

### C.1 Placed applicants by country of domicile and age group, 2019 cycle (A level results day)

Domicile of applicant	Age group				
	17 and under	18	19	20 to 24	25 and over
England	470	170,250	55,280	39,410	24,750
Northern Ireland	30	6,590	1,900	1,960	720
Scotland	490	13,840	4,140	7,310	6,140
Wales	20	8,680	2,890	2,350	1,680
UK	1,000	199,370	64,210	51,020	33,280

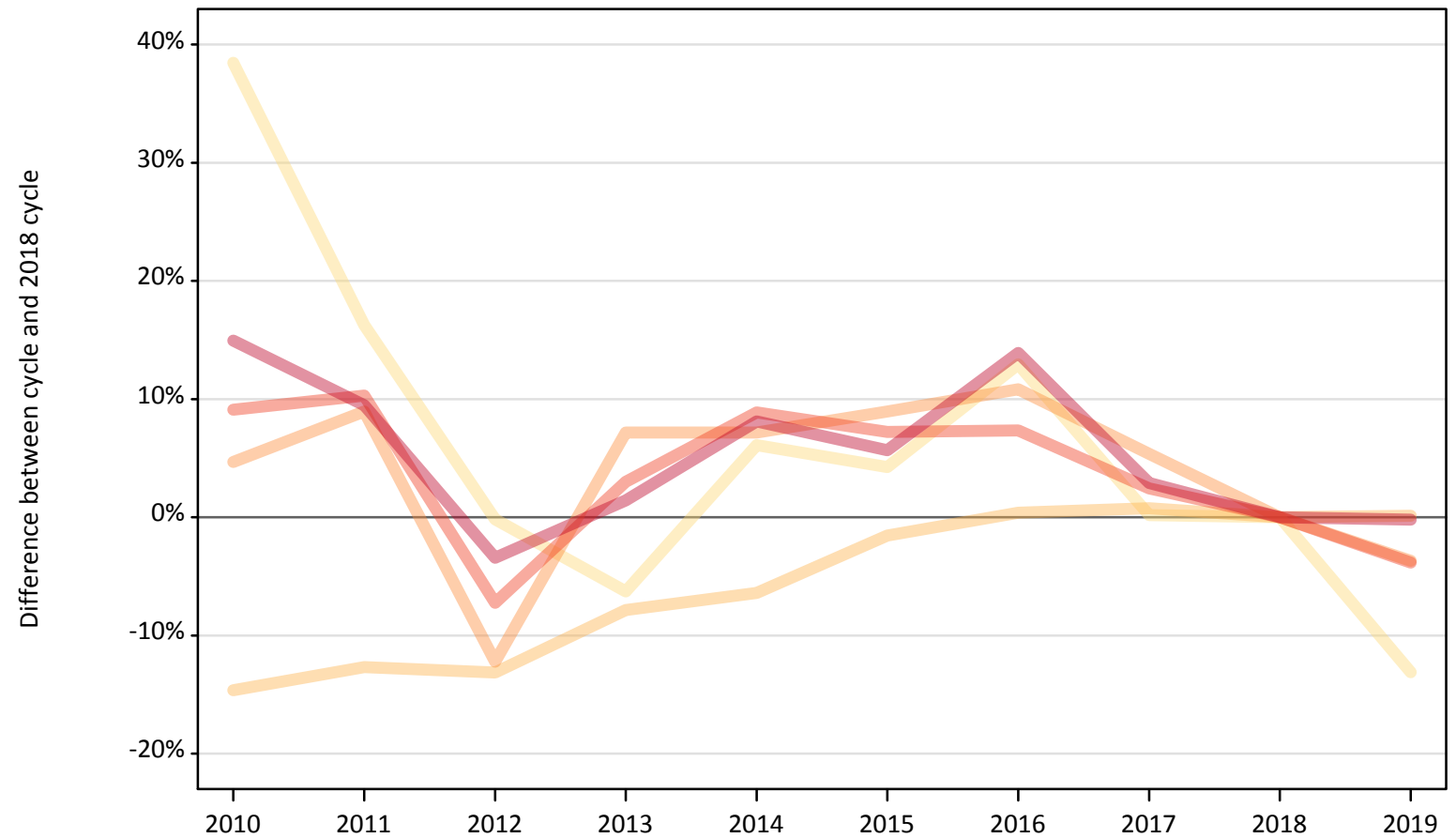
### C.2 Proportion of 18 year old population placed by country of domicile, 2019 cycle (A level results day)

Domicile of applicant	Age group	2019
England	18	28.5%
Northern Ireland	18	29.4%
Scotland	18	25.7%
Wales	18	25.8%

### C.3 Placed applicants from England by age group at A level results day

Selected age groups: difference between cycle and 2018 cycle

- 17 and under
- 18
- 19
- 20 to 24
- 25 and over



Note: The percentage change is not plotted in the above chart for groups with fewer than 30 placed applicants in any one cycle.

#### C.4 Placed applicants from England by age group at A level results day

All age groups

Domicile of applicant	Age group	2010	2011	2012	2013	2014	2015	2016	2017	2018	2019
England	17 and under	750	630	540	510	570	560	610	540	540	470
	18	145,150	148,450	147,700	156,690	159,140	167,390	170,700	171,330	170,030	170,250
	19	60,090	62,540	50,380	61,520	61,520	62,530	63,620	60,480	57,400	55,280
	20 to 24	44,710	45,190	38,010	42,210	44,610	43,940	43,990	41,980	40,980	39,410
	25 and over	28,510	27,150	23,950	25,150	26,810	26,210	28,250	25,520	24,800	24,750

#### C.5 Placed applicants from England by age group at A level results day

Selected age groups: difference between cycle and 2018 cycle

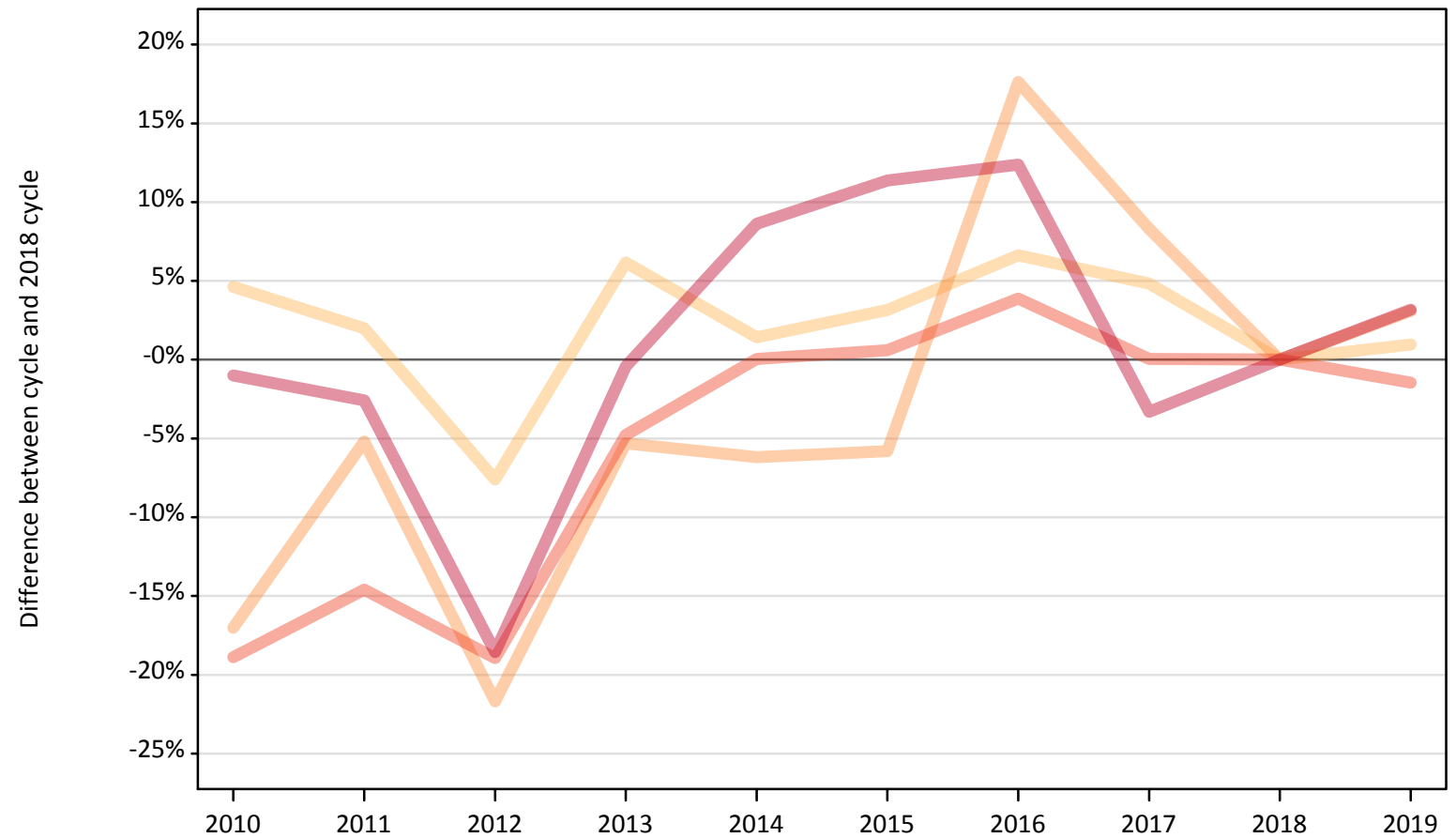
Domicile of applicant	Age group	2010	2011	2012	2013	2014	2015	2016	2017	2018	2019
England	17 and under	38%	16%	-0%	-6%	6%	4%	13%	0%	0%	-13%
	18	-15%	-13%	-13%	-8%	-6%	-2%	0%	1%	0%	0%
	19	5%	9%	-12%	7%	7%	9%	11%	5%	0%	-4%
	20 to 24	9%	10%	-7%	3%	9%	7%	7%	2%	0%	-4%
	25 and over	15%	9%	-3%	1%	8%	6%	14%	3%	0%	-0%

Note: The percentage change is not recorded in the above table for groups with fewer than 10 placed applicants in that cycle or in the 2018 cycle.

## C.6 Placed applicants from Northern Ireland by age group at A level results day

Selected age groups: difference between cycle and 2018 cycle

- 17 and under
- 18
- 19
- 20 to 24
- 25 and over



Note: The percentage change is not plotted in the above chart for groups with fewer than 30 placed applicants in any one cycle.

### C.7 Placed applicants from Northern Ireland by age group at A level results day

All age groups

Domicile of applicant	Age group	2010	2011	2012	2013	2014	2015	2016	2017	2018	2019
Northern Ireland	17 and under	30	30	40	20	20	20	30	20	20	30
	18	6,830	6,660	6,030	6,930	6,620	6,740	6,960	6,840	6,530	6,590
	19	1,530	1,750	1,450	1,750	1,730	1,740	2,170	2,000	1,850	1,900
	20 to 24	1,610	1,700	1,610	1,890	1,990	2,000	2,060	1,990	1,990	1,960
	25 and over	690	680	570	690	760	770	780	670	700	720

### C.8 Placed applicants from Northern Ireland by age group at A level results day

Selected age groups: difference between cycle and 2018 cycle

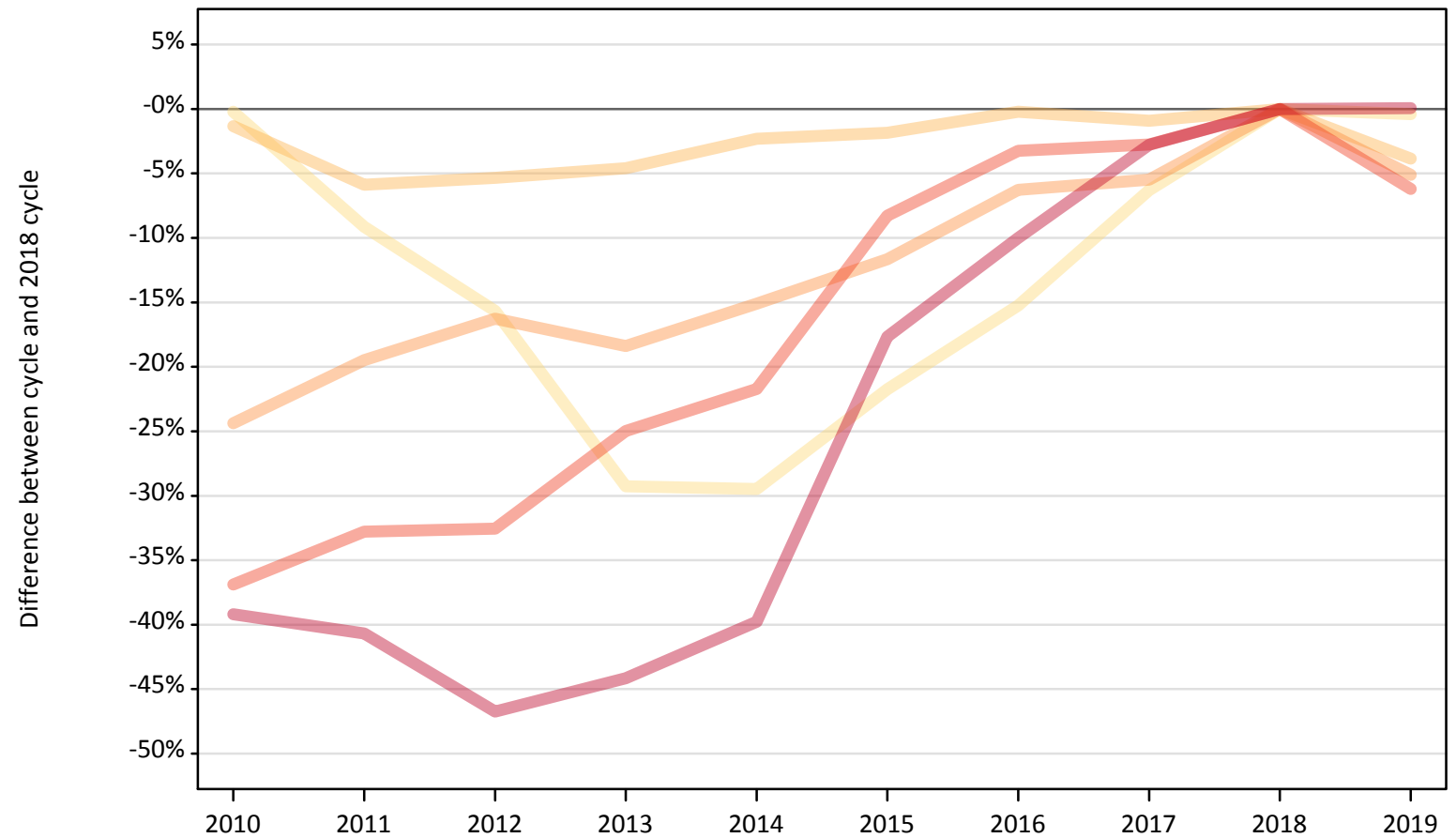
Domicile of applicant	Age group	2010	2011	2012	2013	2014	2015	2016	2017	2018	2019
Northern Ireland	17 and under	35%	30%	52%	-22%	-30%	-30%	17%	-30%	0%	9%
	18	5%	2%	-8%	6%	1%	3%	7%	5%	0%	1%
	19	-17%	-5%	-22%	-5%	-6%	-6%	18%	8%	0%	3%
	20 to 24	-19%	-15%	-19%	-5%	0%	1%	4%	0%	0%	-1%
	25 and over	-1%	-3%	-19%	-0%	9%	11%	12%	-3%	0%	3%

Note: The percentage change is not recorded in the above table for groups with fewer than 10 placed applicants in that cycle or in the 2018 cycle.

### C.9 Placed applicants from Scotland by age group at A level results day

Selected age groups: difference between cycle and 2018 cycle

- 17 and under
- 18
- 19
- 20 to 24
- 25 and over



Note: The percentage change is not plotted in the above chart for groups with fewer than 30 placed applicants in any one cycle.

### C.10 Placed applicants from Scotland by age group at A level results day

All age groups

Domicile of applicant	Age group	2010	2011	2012	2013	2014	2015	2016	2017	2018	2019
Scotland	17 and under	490	450	420	350	350	390	420	460	490	490
	18	14,210	13,550	13,630	13,740	14,070	14,130	14,370	14,270	14,400	13,840
	19	3,300	3,510	3,650	3,560	3,700	3,850	4,090	4,120	4,360	4,140
	20 to 24	4,920	5,230	5,250	5,840	6,100	7,140	7,540	7,570	7,790	7,310
	25 and over	3,730	3,640	3,270	3,430	3,700	5,050	5,520	5,960	6,140	6,140

### C.11 Placed applicants from Scotland by age group at A level results day

Selected age groups: difference between cycle and 2018 cycle

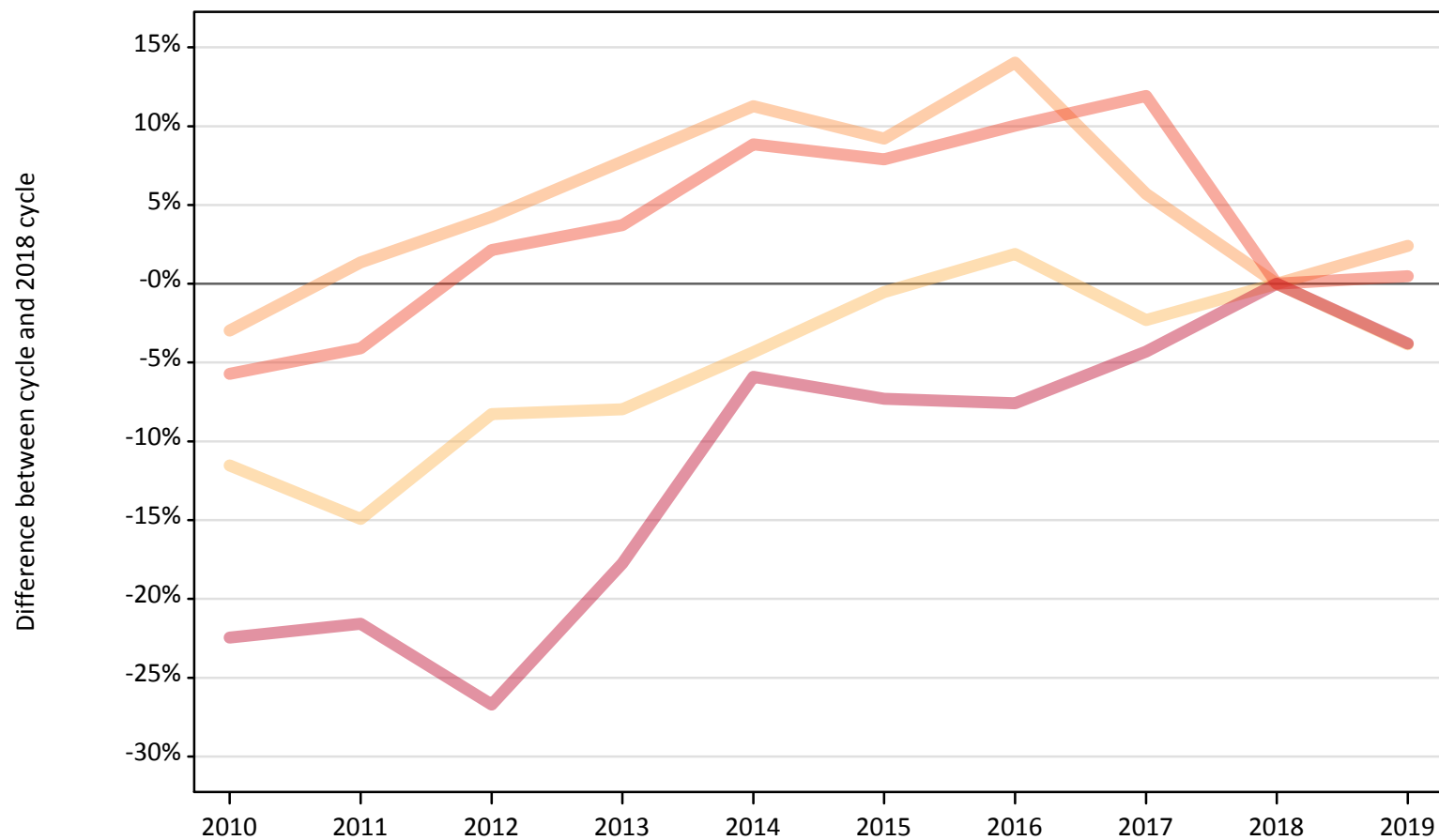
Domicile of applicant	Age group	2010	2011	2012	2013	2014	2015	2016	2017	2018	2019
Scotland	17 and under	-0%	-9%	-16%	-29%	-29%	-22%	-15%	-6%	0%	-0%
	18	-1%	-6%	-5%	-5%	-2%	-2%	-0%	-1%	0%	-4%
	19	-24%	-19%	-16%	-18%	-15%	-12%	-6%	-5%	0%	-5%
	20 to 24	-37%	-33%	-33%	-25%	-22%	-8%	-3%	-3%	0%	-6%
	25 and over	-39%	-41%	-47%	-44%	-40%	-18%	-10%	-3%	0%	0%

Note: The percentage change is not recorded in the above table for groups with fewer than 10 placed applicants in that cycle or in the 2018 cycle.

### C.12 Placed applicants from Wales by age group at A level results day

Selected age groups: difference between cycle and 2018 cycle

- 17 and under
- 18
- 19
- 20 to 24
- 25 and over



Note: The percentage change is not plotted in the above chart for groups with fewer than 30 placed applicants in any one cycle.



### C.13 Placed applicants from Wales by age group at A level results day

All age groups

Domicile of applicant	Age group	2010	2011	2012	2013	2014	2015	2016	2017	2018	2019
Wales	17 and under	30	20	20	20	20	10	20	10	20	20
	18	7,990	7,680	8,280	8,310	8,640	8,980	9,200	8,820	9,030	8,680
	19	2,740	2,860	2,940	3,040	3,140	3,080	3,220	2,980	2,820	2,890
	20 to 24	2,210	2,250	2,390	2,430	2,550	2,530	2,580	2,620	2,340	2,350
	25 and over	1,350	1,370	1,280	1,430	1,640	1,620	1,610	1,670	1,740	1,680

### C.14 Placed applicants from Wales by age group at A level results day

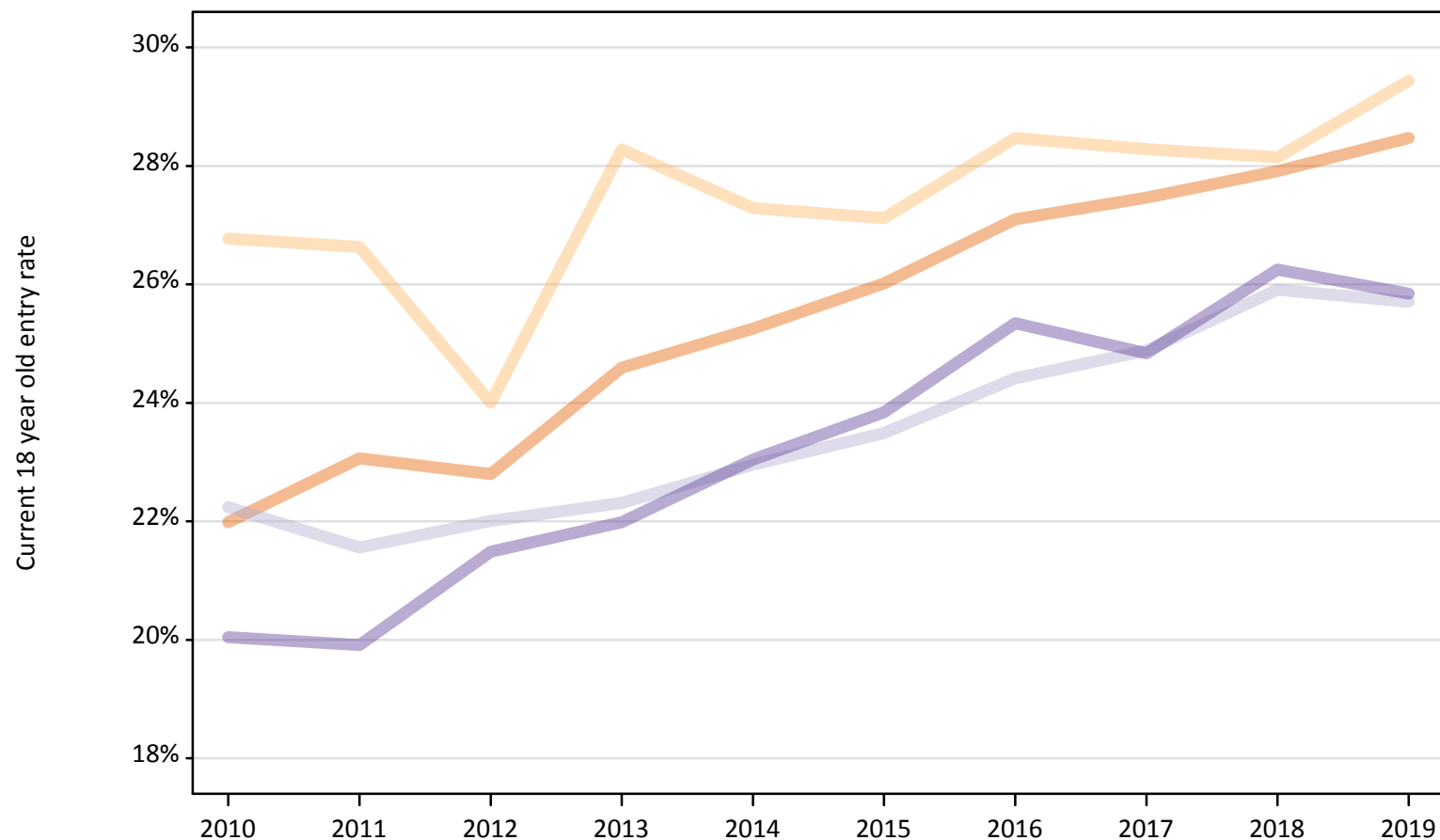
Selected age groups: difference between cycle and 2018 cycle

Domicile of applicant	Age group	2010	2011	2012	2013	2014	2015	2016	2017	2018	2019
Wales	17 and under	50%	20%	-20%	10%	-5%	-30%	0%	-35%	0%	-15%
	18	-12%	-15%	-8%	-8%	-4%	-1%	2%	-2%	0%	-4%
	19	-3%	1%	4%	8%	11%	9%	14%	6%	0%	2%
	20 to 24	-6%	-4%	2%	4%	9%	8%	10%	12%	0%	0%
	25 and over	-22%	-22%	-27%	-18%	-6%	-7%	-8%	-4%	0%	-4%

Note: The percentage change is not recorded in the above table for groups with fewer than 10 placed applicants in that cycle or in the 2018 cycle.

### C.15 Entry rates for 18 year olds by UK country of domicile: A level results day

Placed 18 year old applicants as a proportion of the 18 year old population



### C.16 Entry rates for 18 year olds by UK country of domicile: A level results day

Placed 18 year old applicants as a proportion of the 18 year old population

Domicile of applicant	Age group	2010	2011	2012	2013	2014	2015	2016	2017	2018	2019
England	18	22.0%	23.1%	22.8%	24.6%	25.3%	26.0%	27.1%	27.5%	27.9%	28.5%
Northern Ireland	18	26.8%	26.6%	24.0%	28.3%	27.3%	27.1%	28.5%	28.3%	28.1%	29.4%
Scotland	18	22.2%	21.6%	22.0%	22.3%	23.0%	23.5%	24.4%	24.9%	25.9%	25.7%
Wales	18	20.0%	19.9%	21.5%	22.0%	23.0%	23.8%	25.3%	24.8%	26.3%	25.8%