

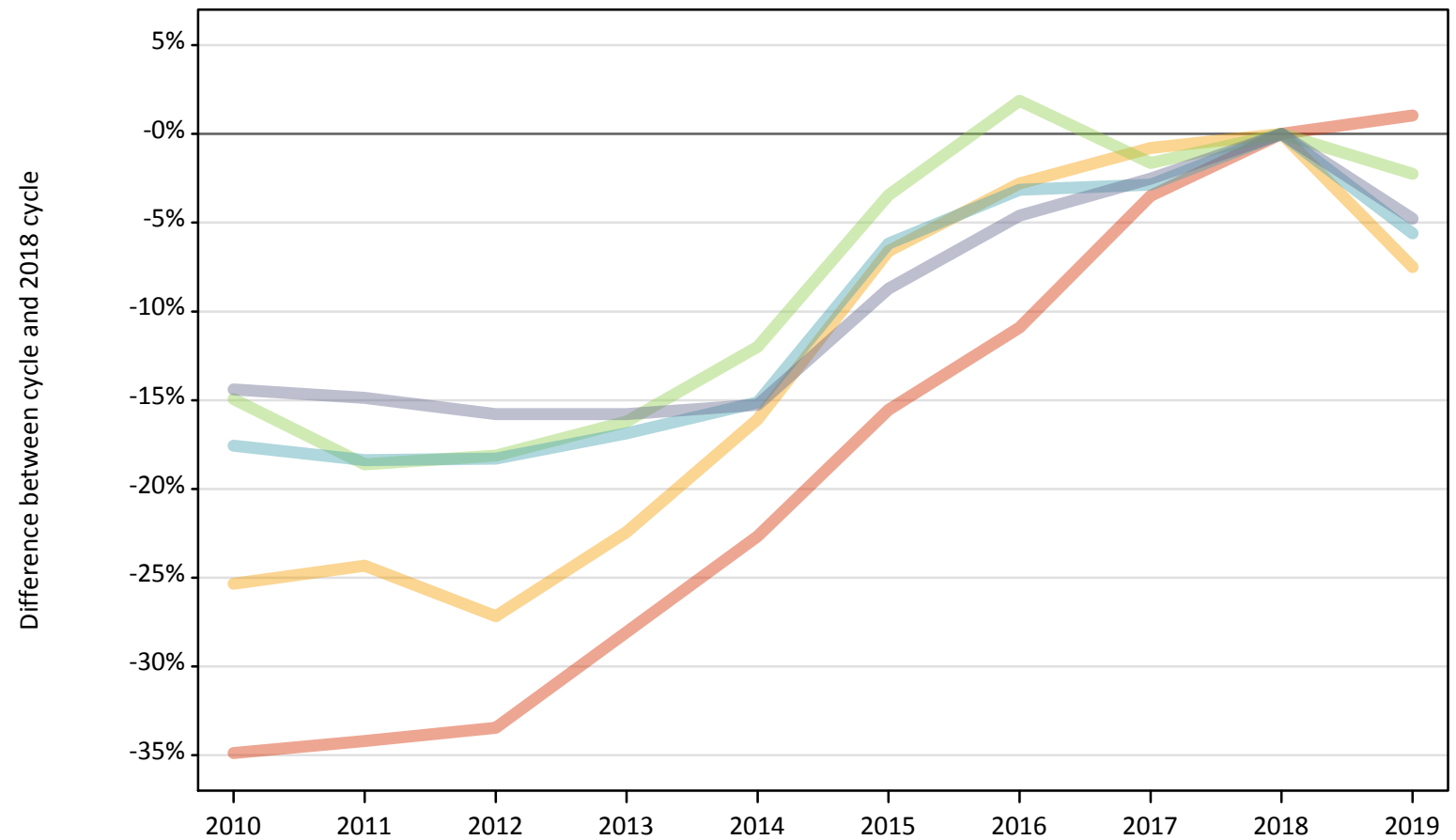
Daily Clearing Analysis: SIMD2012 2016

Analysis at 00:05 on Thursday 15 August 2019 (A level results day)

J.1 Placed applicants from Scotland by SIMD2012/2016 quintile: A level results day

Placed applicants: change relative to 2018 cycle totals

- Quintile 1
- Quintile 2
- Quintile 3
- Quintile 4
- Quintile 5



Note: The percentage change is not plotted in the above chart for groups with fewer than 30 placed applicants in any one cycle.

J.2 Placed applicants from Scotland by SIMD2012/2016 quintile: A level results day

Applicant Status	SIMD2012/2016	2010	2011	2012	2013	2014	2015	2016	2017	2018	2019
Placed	Quintile 1	3,130	3,170	3,200	3,460	3,720	4,070	4,290	4,650	4,810	4,860
	Quintile 2	3,830	3,890	3,740	3,980	4,310	4,800	4,990	5,090	5,140	4,750
	Quintile 3	5,100	4,880	4,910	5,030	5,280	5,790	6,110	5,900	6,000	5,860
	Quintile 4	6,190	6,120	6,130	6,240	6,370	7,040	7,270	7,290	7,500	7,080
	Quintile 5	8,250	8,200	8,110	8,110	8,160	8,790	9,190	9,390	9,630	9,170

J.3 Placed applicants from Scotland by SIMD2012/2016 quintile: A level results day

Placed applicants: change relative to 2018 cycle totals

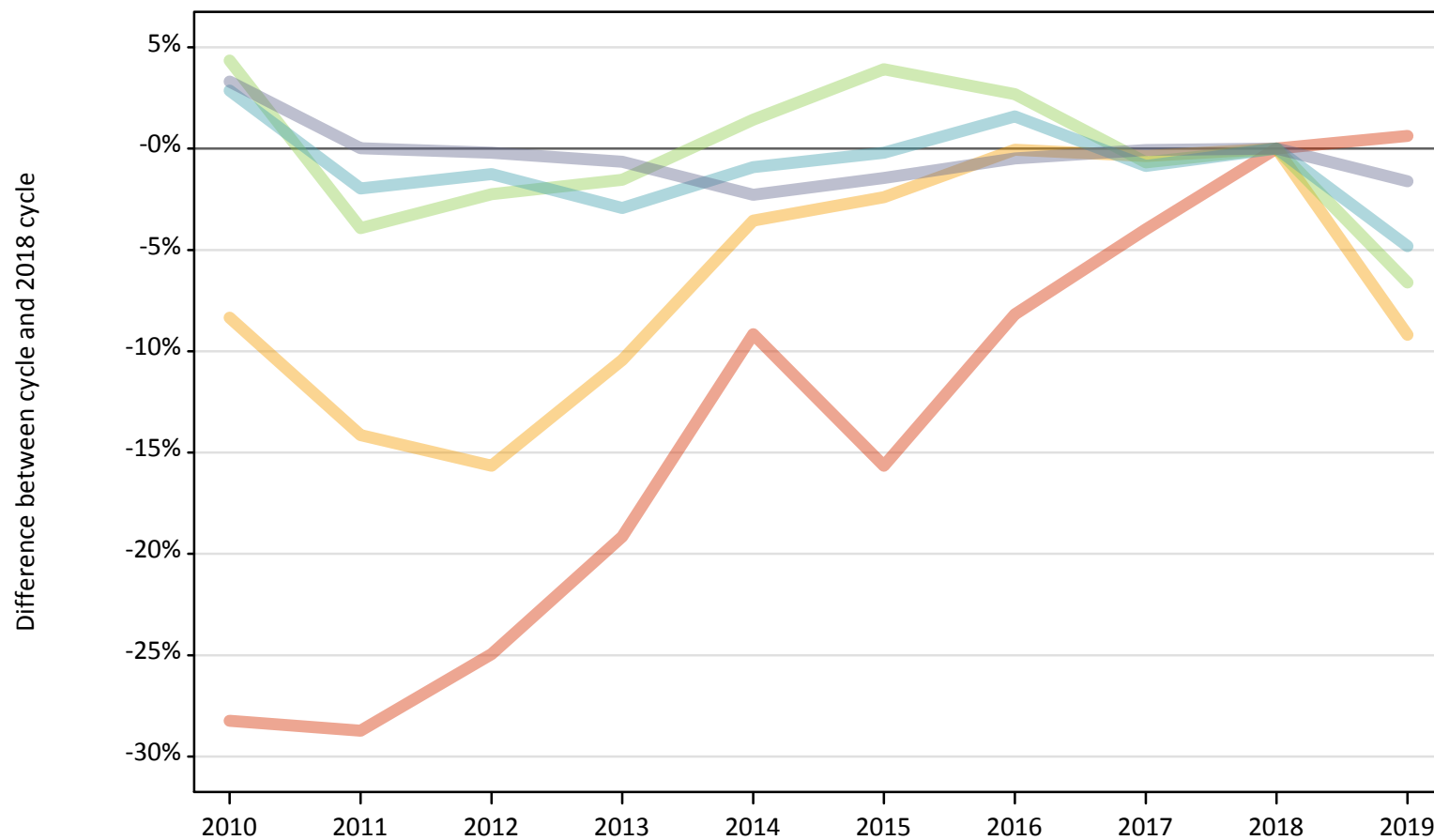
Applicant Status	SIMD2012/2016	2010	2011	2012	2013	2014	2015	2016	2017	2018	2019
Placed	Quintile 1	-35%	-34%	-33%	-28%	-23%	-16%	-11%	-3%	0%	1%
	Quintile 2	-25%	-24%	-27%	-22%	-16%	-7%	-3%	-1%	0%	-7%
	Quintile 3	-15%	-19%	-18%	-16%	-12%	-3%	2%	-2%	0%	-2%
	Quintile 4	-18%	-18%	-18%	-17%	-15%	-6%	-3%	-3%	0%	-6%
	Quintile 5	-14%	-15%	-16%	-16%	-15%	-9%	-5%	-3%	0%	-5%

Note: The percentage change is not recorded in the above table for groups with fewer than 10 placed applicants in that cycle or in the 2018 cycle.

J.4 Placed 18 year old applicants from Scotland by SIMD2012/2016 quintile: A level results day

Placed 18 year old applicants: change relative to 2018 cycle totals

- Quintile 1
- Quintile 2
- Quintile 3
- Quintile 4
- Quintile 5



Note: The percentage change is not plotted in the above chart for groups with fewer than 30 placed applicants in any one cycle.

J.5 Placed 18 year old applicants from Scotland by SIMD2012/2016 quintile: A level results day

Applicant Status	SIMD2012/2016	2010	2011	2012	2013	2014	2015	2016	2017	2018	2019
Placed	Quintile 1	1,030	1,020	1,070	1,160	1,300	1,210	1,310	1,370	1,430	1,440
	Quintile 2	1,760	1,650	1,620	1,720	1,850	1,870	1,920	1,910	1,920	1,740
	Quintile 3	2,640	2,430	2,470	2,490	2,570	2,630	2,600	2,510	2,530	2,360
	Quintile 4	3,620	3,450	3,470	3,410	3,480	3,510	3,570	3,490	3,520	3,350
	Quintile 5	5,140	4,970	4,960	4,940	4,860	4,900	4,950	4,970	4,970	4,890

J.6 Placed 18 year old applicants from Scotland by SIMD2012/2016 quintile: A level results day

Placed 18 year old applicants: change relative to 2018 cycle totals

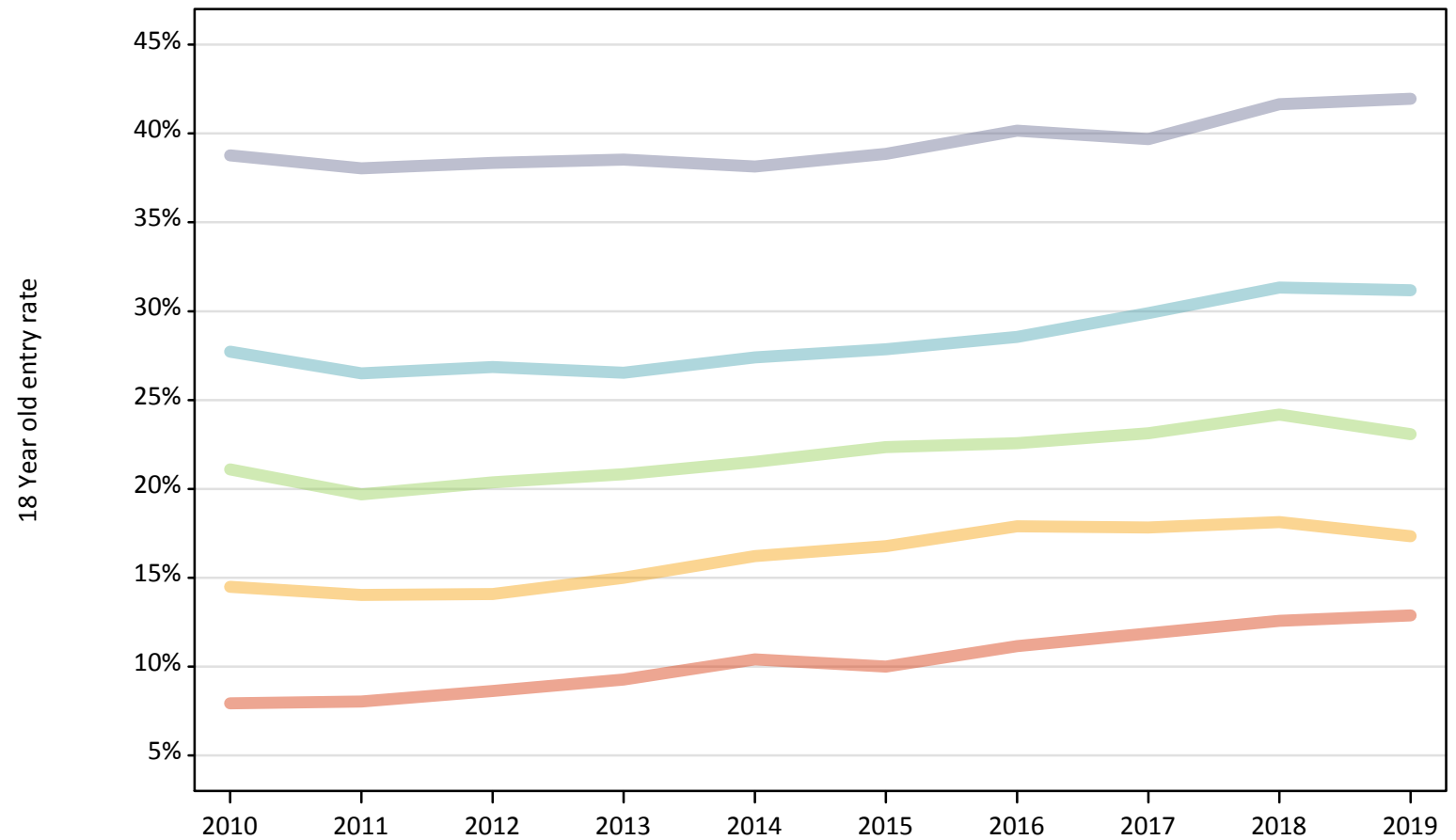
Applicant Status	SIMD2012/2016	2010	2011	2012	2013	2014	2015	2016	2017	2018	2019
Placed	Quintile 1	-28%	-29%	-25%	-19%	-9%	-16%	-8%	-4%	0%	1%
	Quintile 2	-8%	-14%	-16%	-10%	-4%	-2%	-0%	-0%	0%	-9%
	Quintile 3	4%	-4%	-2%	-2%	1%	4%	3%	-1%	0%	-7%
	Quintile 4	3%	-2%	-1%	-3%	-1%	-0%	2%	-1%	0%	-5%
	Quintile 5	3%	0%	-0%	-1%	-2%	-1%	-0%	-0%	0%	-2%

Note: The percentage change is not recorded in the above table for groups with fewer than 10 placed applicants in that cycle or in the 2018 cycle.

J.7 Placed 18 year old applicants from Scotland by SIMD2012/2016 quintile: A level results day

Placed 18 year old applicants: entry rate

- Quintile 1
- Quintile 2
- Quintile 3
- Quintile 4
- Quintile 5



J.8 Placed 18 year old applicants from Scotland by SIMD2012/2016 quintile: A level results day

Placed 18 year old applicants: entry rate

Applicant Status	SIMD2012/2016	2010	2011	2012	2013	2014	2015	2016	2017	2018	2019
Placed	Quintile 1	7.9%	8.0%	8.6%	9.3%	10.4%	10.0%	11.1%	11.9%	12.6%	12.9%
	Quintile 2	14.5%	14.0%	14.1%	15.0%	16.2%	16.8%	17.9%	17.8%	18.1%	17.3%
	Quintile 3	21.1%	19.7%	20.4%	20.8%	21.5%	22.3%	22.6%	23.1%	24.2%	23.1%
	Quintile 4	27.7%	26.5%	26.8%	26.5%	27.4%	27.9%	28.6%	29.9%	31.3%	31.2%
	Quintile 5	38.8%	38.0%	38.3%	38.5%	38.1%	38.9%	40.2%	39.7%	41.6%	42.0%

J.9 Placed 18 year old applicants from Scotland by SIMD2012/2016 quintile: A level results day

Placed 18 year old applicants: entry rate (indexed to 100 = Quintile 1)

Applicant Status	SIMD2012/2016	2010	2011	2012	2013	2014	2015	2016	2017	2018	2019
Placed	Quintile 1	100	100	100	100	100	100	100	100	100	100
	Quintile 2	183	175	163	162	156	168	160	150	144	135
	Quintile 3	266	245	236	225	207	223	202	195	192	179
	Quintile 4	349	330	311	286	263	278	256	252	249	242
	Quintile 5	489	474	444	416	366	388	360	335	331	326