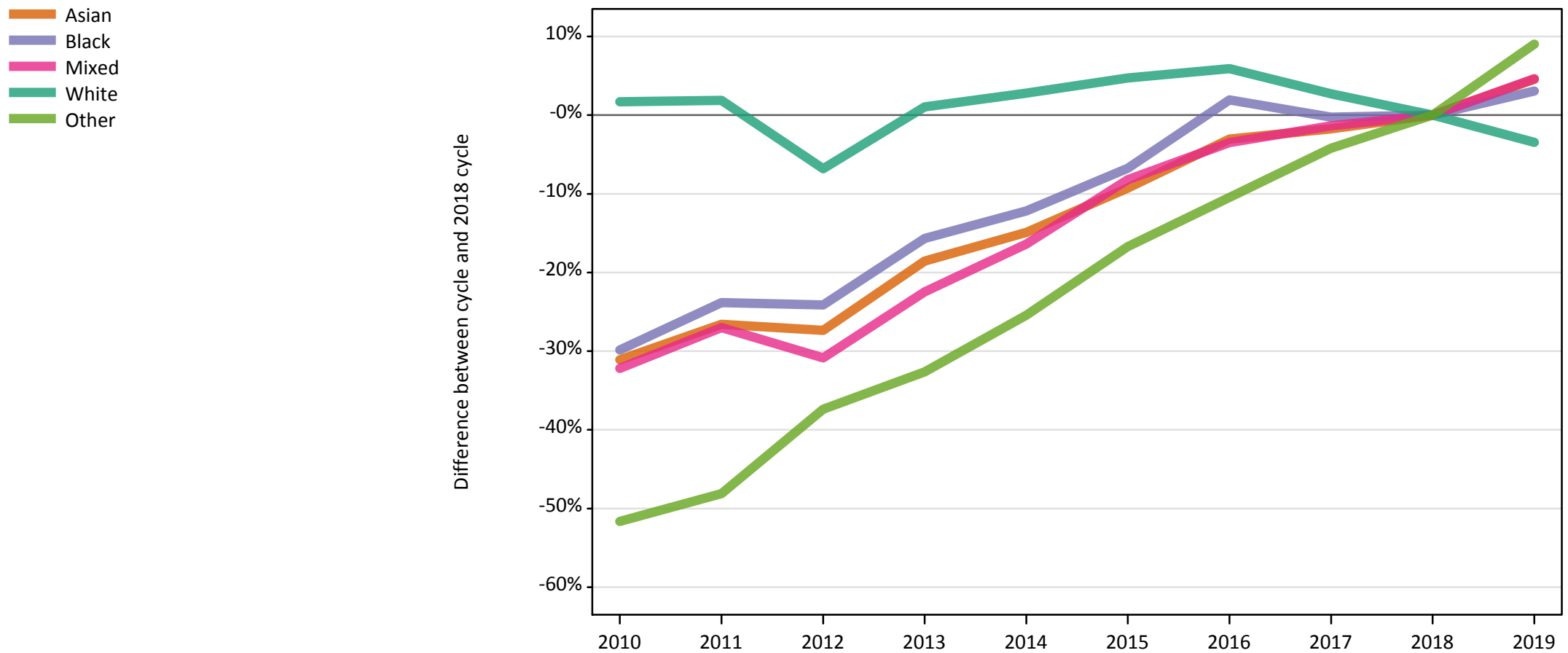


# Daily Clearing Analysis: Ethnicity

Analysis at 00:05 on Thursday 15 August 2019 (A level results day)

## E.1 Placed applicants from UK by ethnic group: A level results day

Placed applicants: change relative to 2018 cycle totals



Note: The percentage change is not plotted in the above chart for groups with fewer than 30 placed applicants in any one cycle.

## E.2 Placed applicants from UK by ethnic group: A level results day

Applicant Status	Ethnic group	2010	2011	2012	2013	2014	2015	2016	2017	2018	2019
Placed	Asian	26,810	28,560	28,260	31,690	33,110	35,300	37,730	38,230	38,910	40,680
	Black	16,190	17,580	17,510	19,460	20,270	21,530	23,530	23,030	23,080	23,790
	Mixed	10,700	11,520	10,910	12,240	13,200	14,490	15,230	15,570	15,780	16,510
	White	271,990	272,480	249,220	270,240	274,930	280,010	283,200	274,690	267,410	258,140
	Other	2,740	2,940	3,550	3,820	4,230	4,720	5,070	5,430	5,670	6,180

## E.3 Placed applicants from UK by ethnic group: A level results day

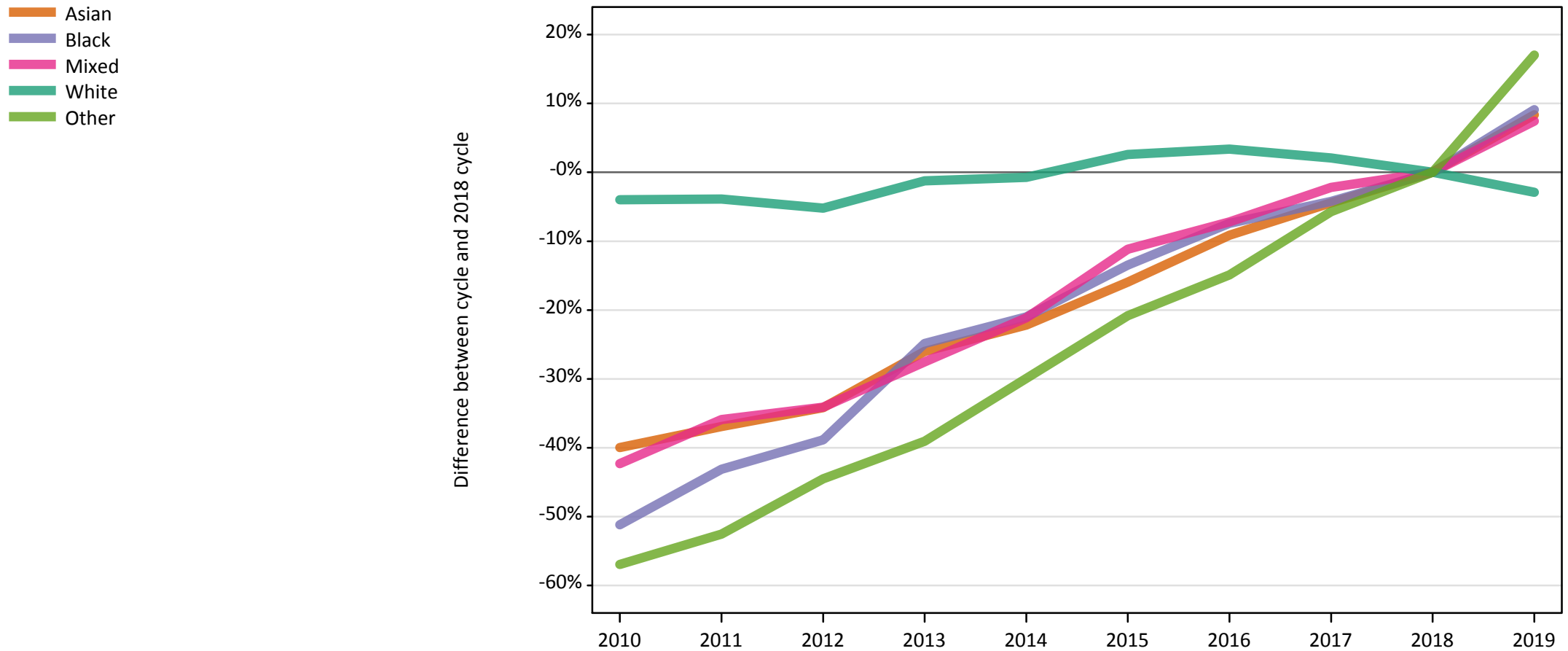
Placed applicants: change relative to 2018 cycle totals

Applicant Status	Ethnic group	2010	2011	2012	2013	2014	2015	2016	2017	2018	2019
Placed	Asian	-31%	-27%	-27%	-19%	-15%	-9%	-3%	-2%	0%	5%
	Black	-30%	-24%	-24%	-16%	-12%	-7%	2%	-0%	0%	3%
	Mixed	-32%	-27%	-31%	-22%	-16%	-8%	-3%	-1%	0%	5%
	White	2%	2%	-7%	1%	3%	5%	6%	3%	0%	-3%
	Other	-52%	-48%	-37%	-33%	-25%	-17%	-10%	-4%	0%	9%

Note: The percentage change is not recorded in the above table for groups with fewer than 10 placed applicants in that cycle or in the 2018 cycle.

## E.4 Placed 18 year old applicants from UK by ethnic group: A level results day

Placed 18 year old applicants: change relative to 2018 cycle totals



Note: The percentage change is not plotted in the above chart for groups with fewer than 30 placed applicants in any one cycle.

### E.5 Placed 18 year old applicants from UK by ethnic group: A level results day

Applicant Status	Ethnic group	2010	2011	2012	2013	2014	2015	2016	2017	2018	2019
Placed	Asian	13,820	14,520	15,160	17,040	17,920	19,350	20,920	22,010	23,030	24,950
	Black	4,570	5,320	5,720	7,030	7,390	8,090	8,660	8,960	9,360	10,210
	Mixed	5,040	5,600	5,760	6,340	6,890	7,770	8,110	8,550	8,740	9,390
	White	148,560	148,730	146,670	152,800	153,590	158,720	159,950	157,940	154,730	150,270
	Other	1,210	1,330	1,560	1,710	1,960	2,220	2,390	2,640	2,800	3,280

### E.6 Placed 18 year old applicants from UK by ethnic group: A level results day

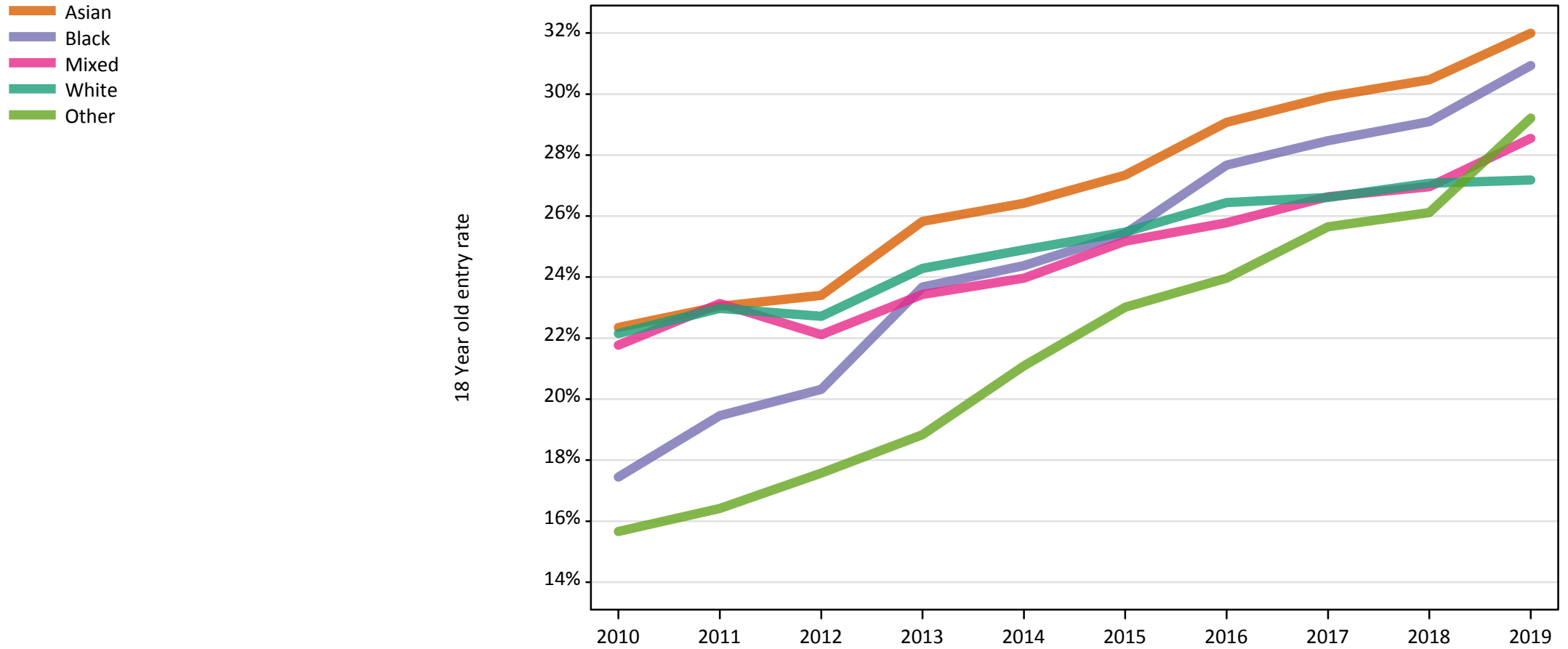
Placed 18 year old applicants: change relative to 2018 cycle totals

Applicant Status	Ethnic group	2010	2011	2012	2013	2014	2015	2016	2017	2018	2019
Placed	Asian	-40%	-37%	-34%	-26%	-22%	-16%	-9%	-4%	0%	8%
	Black	-51%	-43%	-39%	-25%	-21%	-13%	-7%	-4%	0%	9%
	Mixed	-42%	-36%	-34%	-28%	-21%	-11%	-7%	-2%	0%	7%
	White	-4%	-4%	-5%	-1%	-1%	3%	3%	2%	0%	-3%
	Other	-57%	-53%	-45%	-39%	-30%	-21%	-15%	-6%	0%	17%

Note: The percentage change is not recorded in the above table for groups with fewer than 10 placed applicants in that cycle or in the 2018 cycle.

## E.7 Placed 18 year old applicants from UK by ethnic group: A level results day

Placed 18 year old applicants: entry rate



### E.8 Placed 18 year old applicants from UK by ethnic group: A level results day

Placed 18 year old applicants: entry rate

Applicant Status	Ethnic group	2010	2011	2012	2013	2014	2015	2016	2017	2018	2019
Placed	Asian	22.4%	23.0%	23.4%	25.8%	26.4%	27.3%	29.1%	29.9%	30.5%	32.0%
	Black	17.4%	19.5%	20.3%	23.7%	24.4%	25.4%	27.7%	28.5%	29.1%	30.9%
	Mixed	21.8%	23.1%	22.1%	23.4%	24.0%	25.2%	25.8%	26.6%	27.0%	28.5%
	White	22.2%	23.0%	22.7%	24.3%	24.9%	25.5%	26.4%	26.6%	27.1%	27.2%
	Other	15.7%	16.4%	17.6%	18.8%	21.1%	23.0%	24.0%	25.6%	26.1%	29.2%

### E.9 Placed 18 year old applicants from UK by ethnic group: A level results day

Placed 18 year old applicants: entry rate (indexed to 100 = White ethnic group)

Applicant Status	Ethnic group	2010	2011	2012	2013	2014	2015	2016	2017	2018	2019
Placed	Asian	101	100	103	106	106	107	110	112	113	118
	Black	79	85	89	98	98	100	105	107	107	114
	Mixed	98	101	97	96	96	99	97	100	100	105
	White	100	100	100	100	100	100	100	100	100	100
	Other	71	71	77	78	85	90	91	96	96	107

### E.10 Placed applicants from England by ethnic group: A level results day

Placed applicants: change relative to 2018 cycle totals



Note: The percentage change is not plotted in the above chart for groups with fewer than 30 placed applicants in any one cycle.

### E.11 Placed applicants from England by ethnic group: A level results day

Applicant Status	Ethnic group	2010	2011	2012	2013	2014	2015	2016	2017	2018	2019
Placed	Asian	25,440	27,150	26,680	30,070	31,370	33,400	35,690	36,060	36,540	38,330
	Black	15,830	17,160	17,020	18,950	19,780	20,940	22,910	22,310	22,260	23,000
	Mixed	10,010	10,740	10,170	11,430	12,360	13,500	14,190	14,490	14,570	15,260
	White	223,100	224,040	201,580	220,160	223,410	225,990	226,950	219,320	212,340	204,600
	Other	2,620	2,820	3,370	3,620	4,010	4,450	4,790	5,150	5,330	5,770

### E.12 Placed applicants from England by ethnic group: A level results day

Placed applicants: change relative to 2018 cycle totals

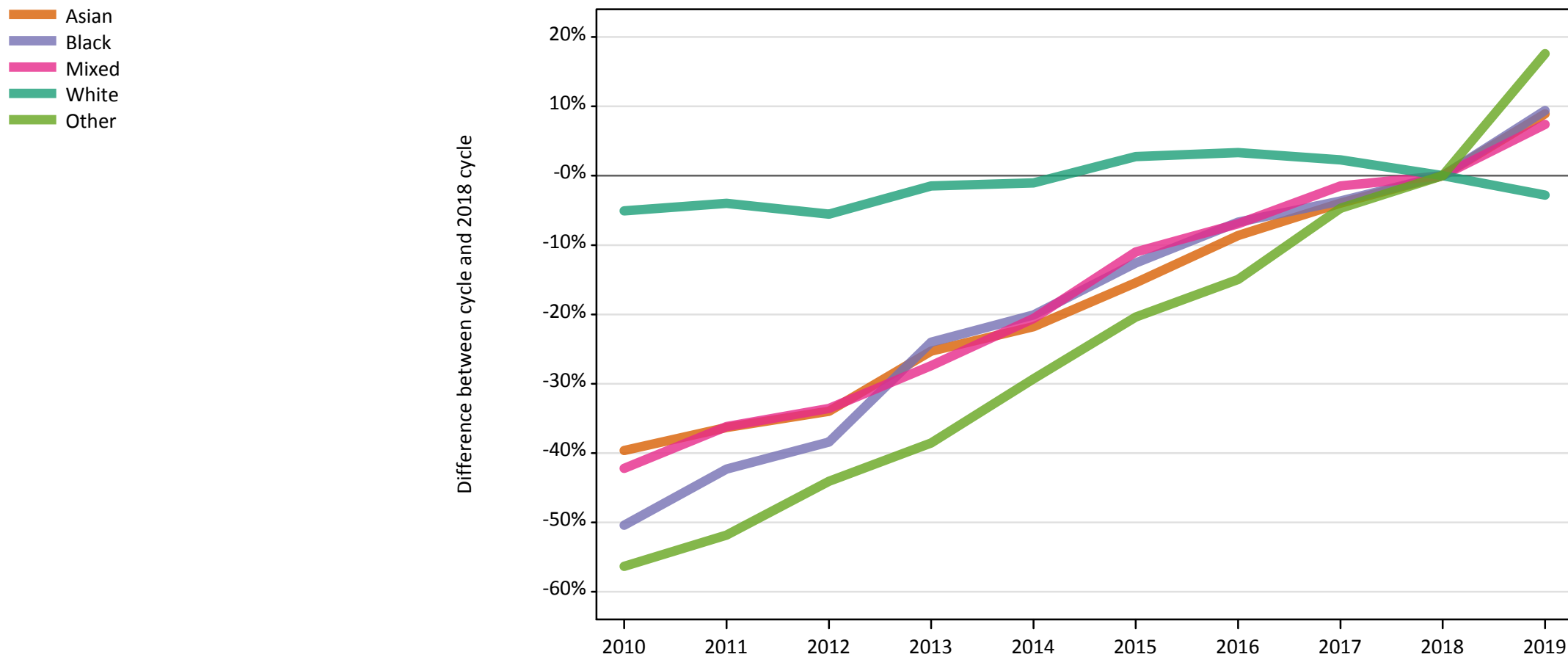
Applicant Status	Ethnic group	2010	2011	2012	2013	2014	2015	2016	2017	2018	2019
Placed	Asian	-30%	-26%	-27%	-18%	-14%	-9%	-2%	-1%	0%	5%
	Black	-29%	-23%	-24%	-15%	-11%	-6%	3%	0%	0%	3%
	Mixed	-31%	-26%	-30%	-22%	-15%	-7%	-3%	-1%	0%	5%
	White	5%	6%	-5%	4%	5%	6%	7%	3%	0%	-4%
	Other	-51%	-47%	-37%	-32%	-25%	-17%	-10%	-4%	0%	8%

Note: The percentage change is not recorded in the above table for groups with fewer than 10 placed applicants in that cycle or in the 2018 cycle.



### E.13 Placed 18 year old applicants from England by ethnic group: A level results day

Placed 18 year old applicants: change relative to 2018 cycle totals



Note: The percentage change is not plotted in the above chart for groups with fewer than 30 placed applicants in any one cycle.

#### E.14 Placed 18 year old applicants from England by ethnic group: A level results day

Applicant Status	Ethnic group	2010	2011	2012	2013	2014	2015	2016	2017	2018	2019
Placed	Asian	13,150	13,870	14,380	16,280	17,040	18,420	19,900	20,930	21,780	23,730
	Black	4,510	5,240	5,600	6,910	7,260	7,950	8,480	8,760	9,090	9,940
	Mixed	4,710	5,200	5,410	5,910	6,470	7,250	7,580	8,030	8,150	8,750
	White	120,730	122,100	120,100	125,270	125,850	130,660	131,400	130,050	127,160	123,580
	Other	1,160	1,280	1,480	1,630	1,880	2,110	2,260	2,530	2,650	3,120

#### E.15 Placed 18 year old applicants from England by ethnic group: A level results day

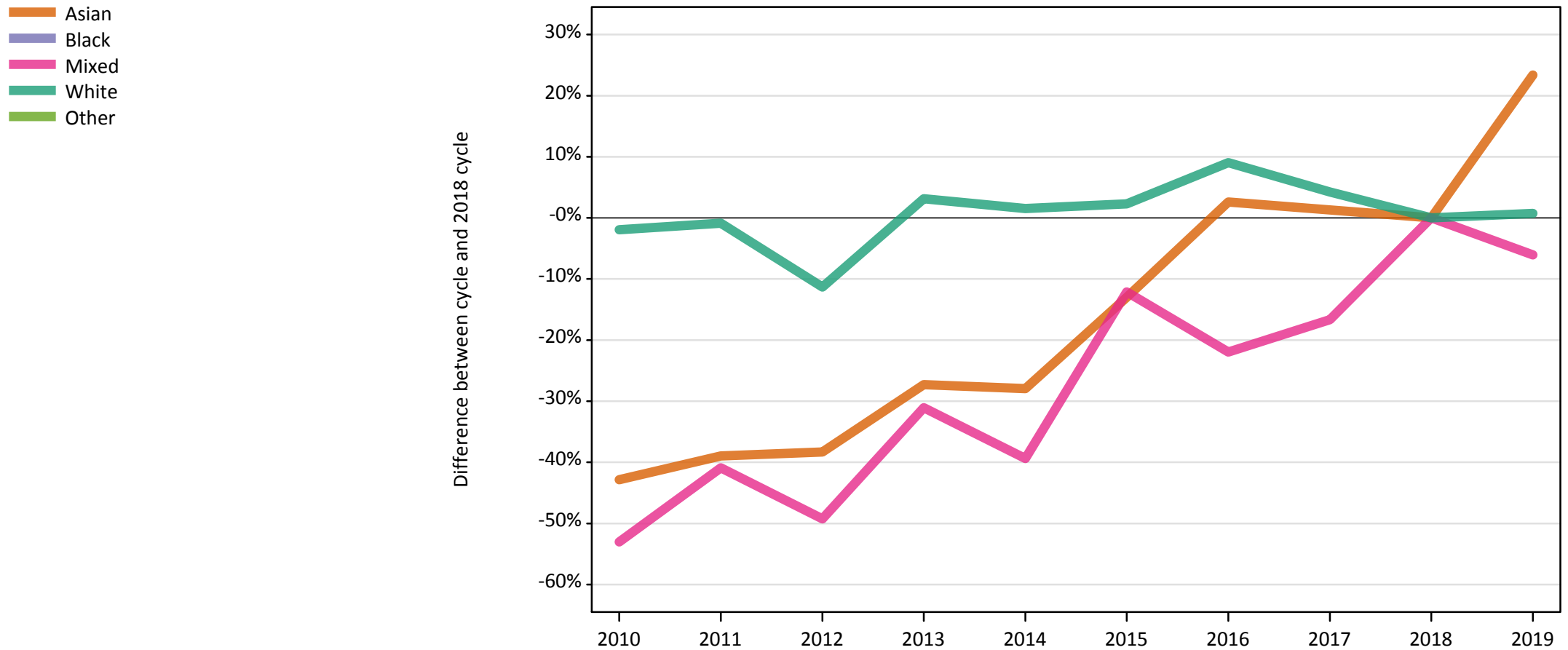
Placed 18 year old applicants: change relative to 2018 cycle totals

Applicant Status	Ethnic group	2010	2011	2012	2013	2014	2015	2016	2017	2018	2019
Placed	Asian	-40%	-36%	-34%	-25%	-22%	-15%	-9%	-4%	0%	9%
	Black	-50%	-42%	-38%	-24%	-20%	-13%	-7%	-4%	0%	9%
	Mixed	-42%	-36%	-34%	-27%	-21%	-11%	-7%	-1%	0%	7%
	White	-5%	-4%	-6%	-1%	-1%	3%	3%	2%	0%	-3%
	Other	-56%	-52%	-44%	-39%	-29%	-20%	-15%	-5%	0%	18%

Note: The percentage change is not recorded in the above table for groups with fewer than 10 placed applicants in that cycle or in the 2018 cycle.

### E.16 Placed applicants from Northern Ireland by ethnic group: A level results day

Placed applicants: change relative to 2018 cycle totals



Note: The percentage change is not plotted in the above chart for groups with fewer than 30 placed applicants in any one cycle.

### E.17 Placed applicants from Northern Ireland by ethnic group: A level results day

Applicant Status	Ethnic group	2010	2011	2012	2013	2014	2015	2016	2017	2018	2019
Placed	Asian	90	90	100	110	110	130	160	160	150	190
	Black	20	10	20	20	30	30	40	40	50	50
	Mixed	60	80	70	90	80	120	100	110	130	120
	White	10,490	10,600	9,480	11,030	10,860	10,940	11,660	11,150	10,700	10,780
	Other	10	10	10	10	10	10	10	20	20	20

### E.18 Placed applicants from Northern Ireland by ethnic group: A level results day

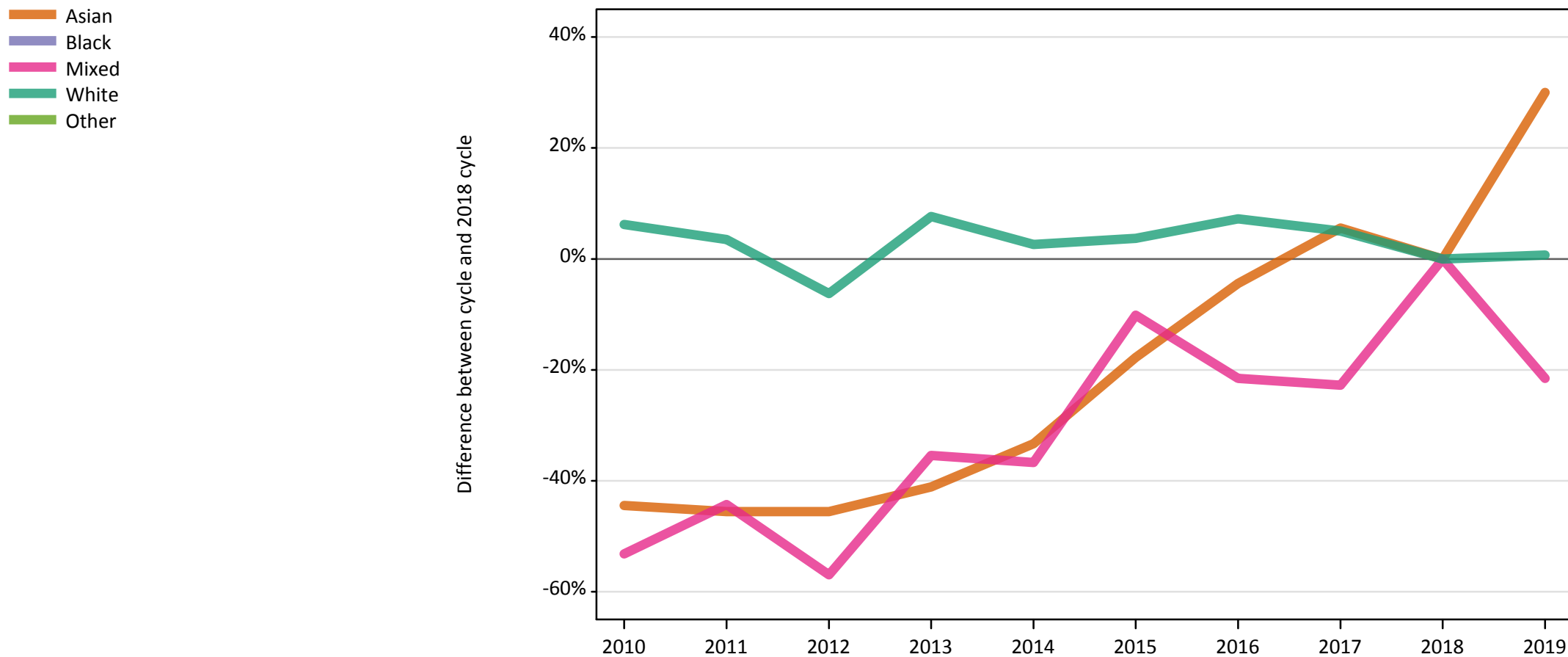
Placed applicants: change relative to 2018 cycle totals

Applicant Status	Ethnic group	2010	2011	2012	2013	2014	2015	2016	2017	2018	2019
Placed	Asian	-43%	-39%	-38%	-27%	-28%	-13%	3%	1%	0%	23%
	Black	-67%	-76%	-58%	-51%	-31%	-36%	-2%	-11%	0%	2%
	Mixed	-53%	-41%	-49%	-31%	-39%	-12%	-22%	-17%	0%	-6%
	White	-2%	-1%	-11%	3%	2%	2%	9%	4%	0%	1%
	Other	-24%		-41%		-29%	-35%	-24%	29%	0%	6%

Note: The percentage change is not recorded in the above table for groups with fewer than 10 placed applicants in that cycle or in the 2018 cycle.

### E.19 Placed 18 year old applicants from Northern Ireland by ethnic group: A level results day

Placed 18 year old applicants: change relative to 2018 cycle totals



Note: The percentage change is not plotted in the above chart for groups with fewer than 30 placed applicants in any one cycle.

### E.20 Placed 18 year old applicants from Northern Ireland by ethnic group: A level results day

Applicant Status	Ethnic group	2010	2011	2012	2013	2014	2015	2016	2017	2018	2019
Placed	Asian	50	50	50	50	60	70	90	100	90	120
	Black	0	0	10	10	10	10	10	10	10	20
	Mixed	40	40	30	50	50	70	60	60	80	60
	White	6,720	6,550	5,930	6,810	6,490	6,560	6,780	6,640	6,330	6,370
	Other	10	0	0	0	10	0	10	10	10	10

### E.21 Placed 18 year old applicants from Northern Ireland by ethnic group: A level results day

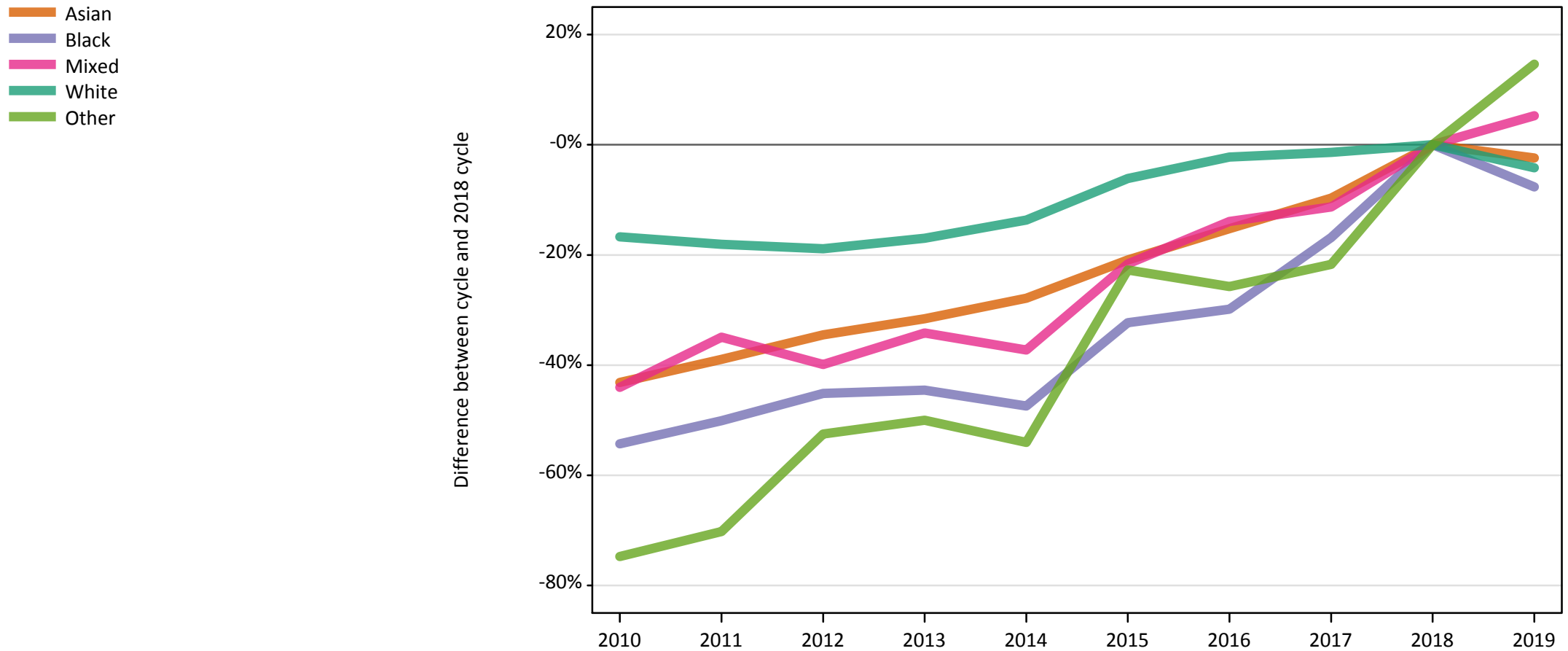
Placed 18 year old applicants: change relative to 2018 cycle totals

Applicant Status	Ethnic group	2010	2011	2012	2013	2014	2015	2016	2017	2018	2019
Placed	Asian	-44%	-46%	-46%	-41%	-33%	-18%	-4%	6%	0%	30%
	Black				-9%	-9%	0%	9%	9%	0%	45%
	Mixed	-53%	-44%	-57%	-35%	-37%	-10%	-22%	-23%	0%	-22%
	White	6%	3%	-6%	8%	3%	4%	7%	5%	0%	1%
	Other										

Note: The percentage change is not recorded in the above table for groups with fewer than 10 placed applicants in that cycle or in the 2018 cycle.

## E.22 Placed applicants from Scotland by ethnic group: A level results day

Placed applicants: change relative to 2018 cycle totals



Note: The percentage change is not plotted in the above chart for groups with fewer than 30 placed applicants in any one cycle.

### E.23 Placed applicants from Scotland by ethnic group: A level results day

Applicant Status	Ethnic group	2010	2011	2012	2013	2014	2015	2016	2017	2018	2019
Placed	Asian	870	930	1,000	1,050	1,100	1,210	1,300	1,380	1,530	1,490
	Black	240	260	290	290	280	350	370	440	520	480
	Mixed	360	420	390	430	410	510	560	570	650	680
	White	25,010	24,600	24,350	24,930	25,920	28,180	29,350	29,610	30,030	28,780
	Other	50	60	90	100	90	150	150	160	200	230

### E.24 Placed applicants from Scotland by ethnic group: A level results day

Placed applicants: change relative to 2018 cycle totals

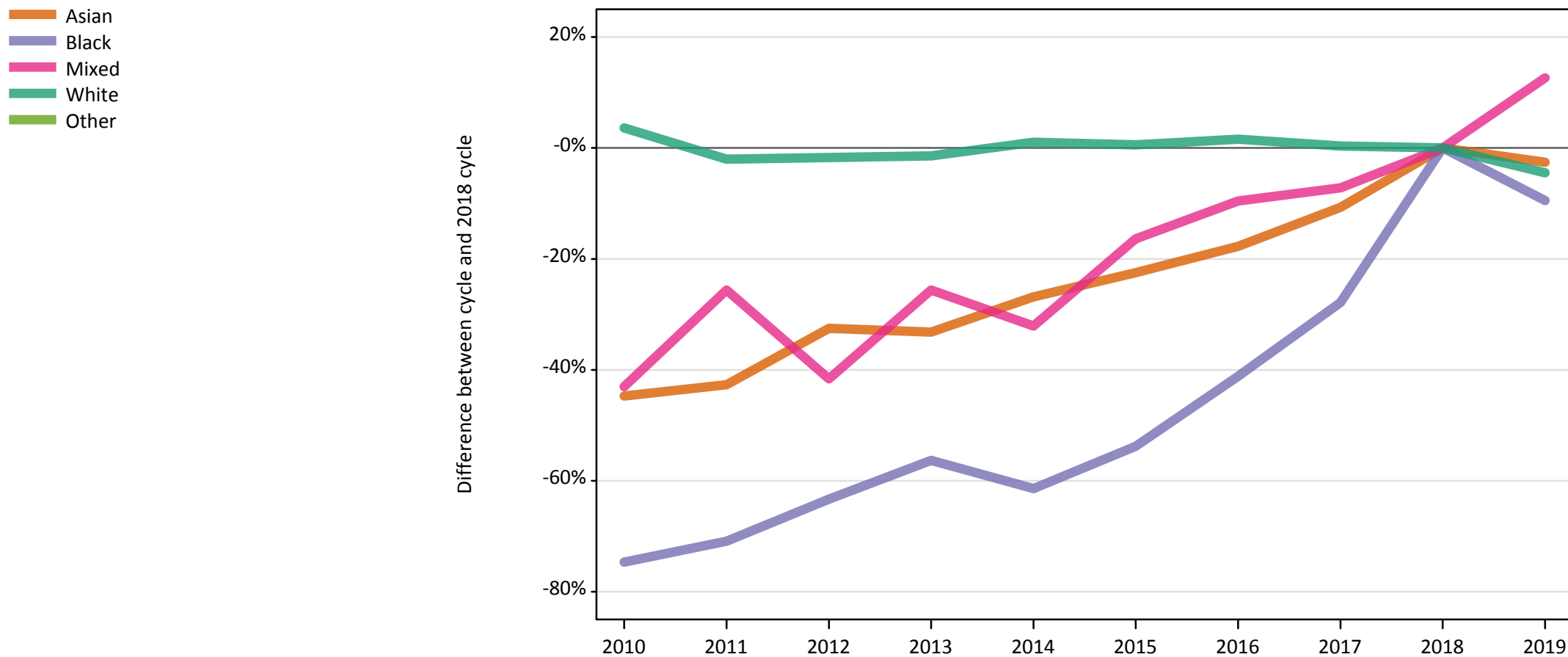
Applicant Status	Ethnic group	2010	2011	2012	2013	2014	2015	2016	2017	2018	2019
Placed	Asian	-43%	-39%	-35%	-32%	-28%	-21%	-15%	-10%	0%	-2%
	Black	-54%	-50%	-45%	-45%	-47%	-32%	-30%	-17%	0%	-8%
	Mixed	-44%	-35%	-40%	-34%	-37%	-22%	-14%	-11%	0%	5%
	White	-17%	-18%	-19%	-17%	-14%	-6%	-2%	-1%	0%	-4%
	Other	-75%	-70%	-53%	-50%	-54%	-23%	-26%	-22%	0%	15%

Note: The percentage change is not recorded in the above table for groups with fewer than 10 placed applicants in that cycle or in the 2018 cycle.



## E.25 Placed 18 year old applicants from Scotland by ethnic group: A level results day

Placed 18 year old applicants: change relative to 2018 cycle totals



Note: The percentage change is not plotted in the above chart for groups with fewer than 30 placed applicants in any one cycle.

### E.26 Placed 18 year old applicants from Scotland by ethnic group: A level results day

Applicant Status	Ethnic group	2010	2011	2012	2013	2014	2015	2016	2017	2018	2019
Placed	Asian	410	420	500	490	540	570	610	660	740	720
	Black	40	50	60	70	60	70	90	110	160	140
	Mixed	170	220	170	220	200	250	270	270	290	330
	White	13,530	12,800	12,840	12,880	13,200	13,140	13,270	13,110	13,060	12,480
	Other	20	30	40	40	30	60	60	60	70	80

### E.27 Placed 18 year old applicants from Scotland by ethnic group: A level results day

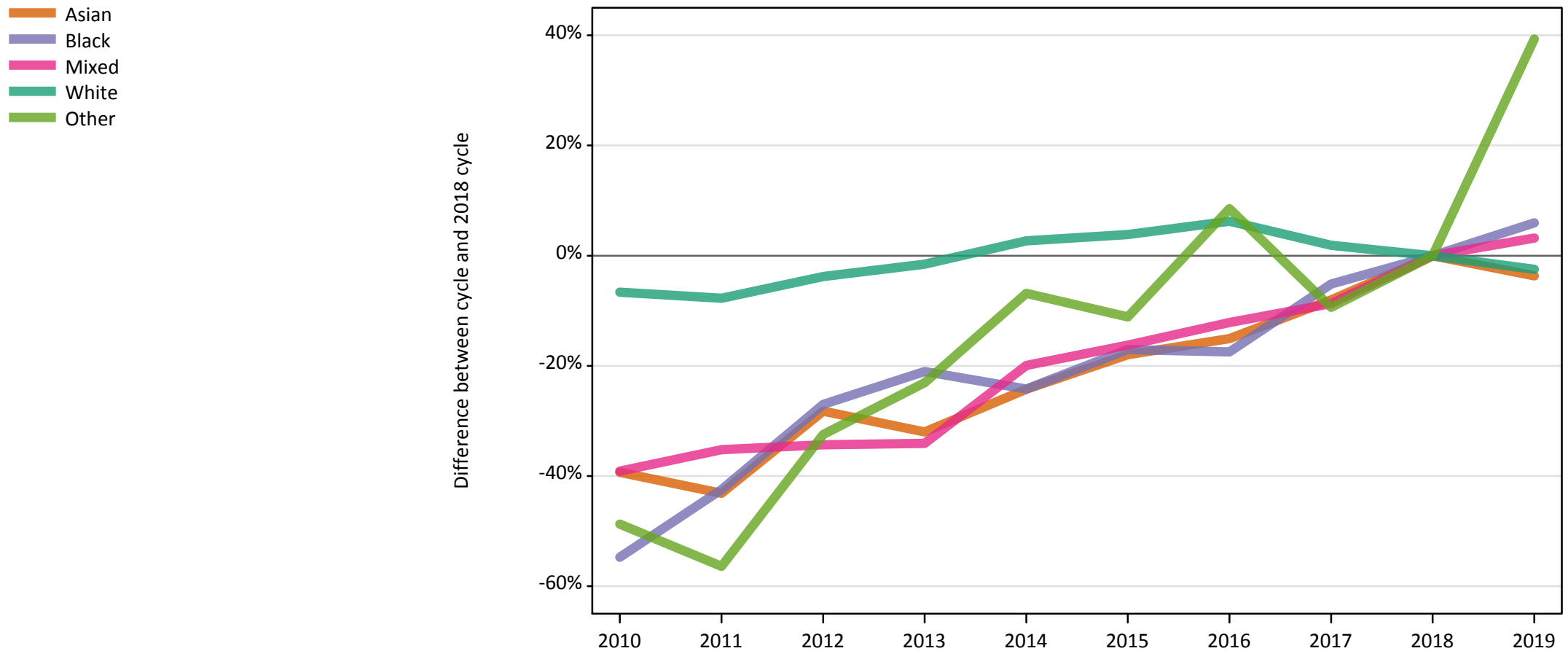
Placed 18 year old applicants: change relative to 2018 cycle totals

Applicant Status	Ethnic group	2010	2011	2012	2013	2014	2015	2016	2017	2018	2019
Placed	Asian	-45%	-43%	-33%	-33%	-27%	-22%	-18%	-11%	0%	-3%
	Black	-75%	-71%	-63%	-56%	-61%	-54%	-41%	-28%	0%	-9%
	Mixed	-43%	-26%	-42%	-26%	-32%	-16%	-10%	-7%	0%	13%
	White	4%	-2%	-2%	-1%	1%	1%	2%	0%	0%	-4%
	Other	-78%	-60%	-52%	-48%	-53%	-22%	-21%	-19%	0%	14%

Note: The percentage change is not recorded in the above table for groups with fewer than 10 placed applicants in that cycle or in the 2018 cycle.

## E.28 Placed applicants from Wales by ethnic group: A level results day

Placed applicants: change relative to 2018 cycle totals



Note: The percentage change is not plotted in the above chart for groups with fewer than 30 placed applicants in any one cycle.

### E.29 Placed applicants from Wales by ethnic group: A level results day

Applicant Status	Ethnic group	2010	2011	2012	2013	2014	2015	2016	2017	2018	2019
Placed	Asian	420	390	490	470	520	560	580	630	680	660
	Black	110	150	180	200	190	210	210	240	250	270
	Mixed	270	280	290	290	350	370	380	400	440	450
	White	13,400	13,240	13,800	14,130	14,740	14,900	15,240	14,620	14,350	13,990
	Other	60	50	80	90	110	100	130	110	120	160

### E.30 Placed applicants from Wales by ethnic group: A level results day

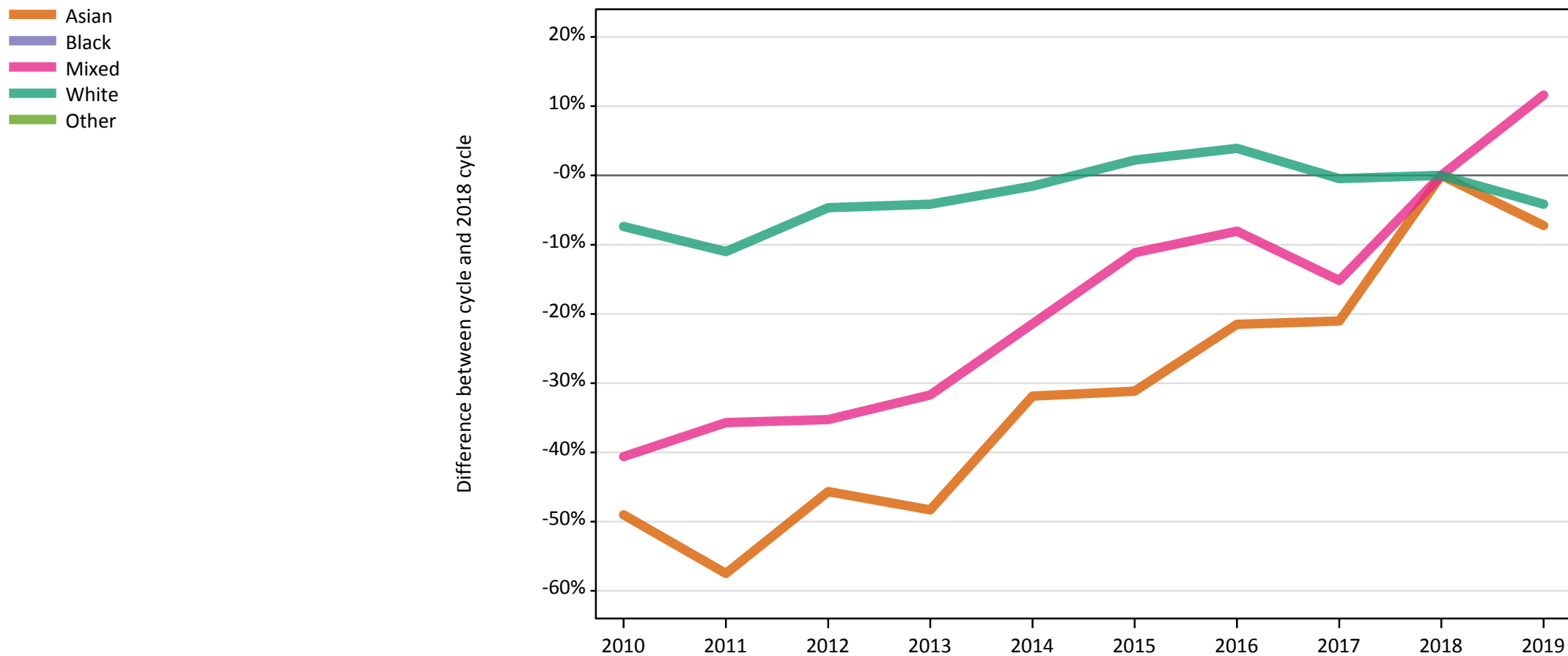
Placed applicants: change relative to 2018 cycle totals

Applicant Status	Ethnic group	2010	2011	2012	2013	2014	2015	2016	2017	2018	2019
Placed	Asian	-39%	-43%	-28%	-32%	-24%	-18%	-15%	-8%	0%	-4%
	Black	-55%	-42%	-27%	-21%	-24%	-17%	-17%	-5%	0%	6%
	Mixed	-39%	-35%	-34%	-34%	-20%	-16%	-12%	-9%	0%	3%
	White	-7%	-8%	-4%	-2%	3%	4%	6%	2%	0%	-2%
	Other	-49%	-56%	-32%	-23%	-7%	-11%	9%	-9%	0%	39%

Note: The percentage change is not recorded in the above table for groups with fewer than 10 placed applicants in that cycle or in the 2018 cycle.

### E.31 Placed 18 year old applicants from Wales by ethnic group: A level results day

Placed 18 year old applicants: change relative to 2018 cycle totals



Note: The percentage change is not plotted in the above chart for groups with fewer than 30 placed applicants in any one cycle.

### E.32 Placed 18 year old applicants from Wales by ethnic group: A level results day

Applicant Status	Ethnic group	2010	2011	2012	2013	2014	2015	2016	2017	2018	2019
Placed	Asian	210	180	230	210	280	290	330	330	410	380
	Black	20	30	60	50	60	60	80	80	100	100
	Mixed	130	140	150	150	180	200	210	190	220	250
	White	7,580	7,280	7,800	7,840	8,050	8,360	8,500	8,140	8,180	7,840
	Other	30	20	30	40	50	50	70	50	70	70

### E.33 Placed 18 year old applicants from Wales by ethnic group: A level results day

Placed 18 year old applicants: change relative to 2018 cycle totals

Applicant Status	Ethnic group	2010	2011	2012	2013	2014	2015	2016	2017	2018	2019
Placed	Asian	-49%	-57%	-46%	-48%	-32%	-31%	-21%	-21%	0%	-7%
	Black	-80%	-73%	-42%	-53%	-43%	-35%	-20%	-21%	0%	6%
	Mixed	-41%	-36%	-35%	-32%	-21%	-11%	-8%	-15%	0%	12%
	White	-7%	-11%	-5%	-4%	-2%	2%	4%	-0%	0%	-4%
	Other	-61%	-70%	-51%	-43%	-32%	-32%	-6%	-32%	0%	-1%

Note: The percentage change is not recorded in the above table for groups with fewer than 10 placed applicants in that cycle or in the 2018 cycle.