

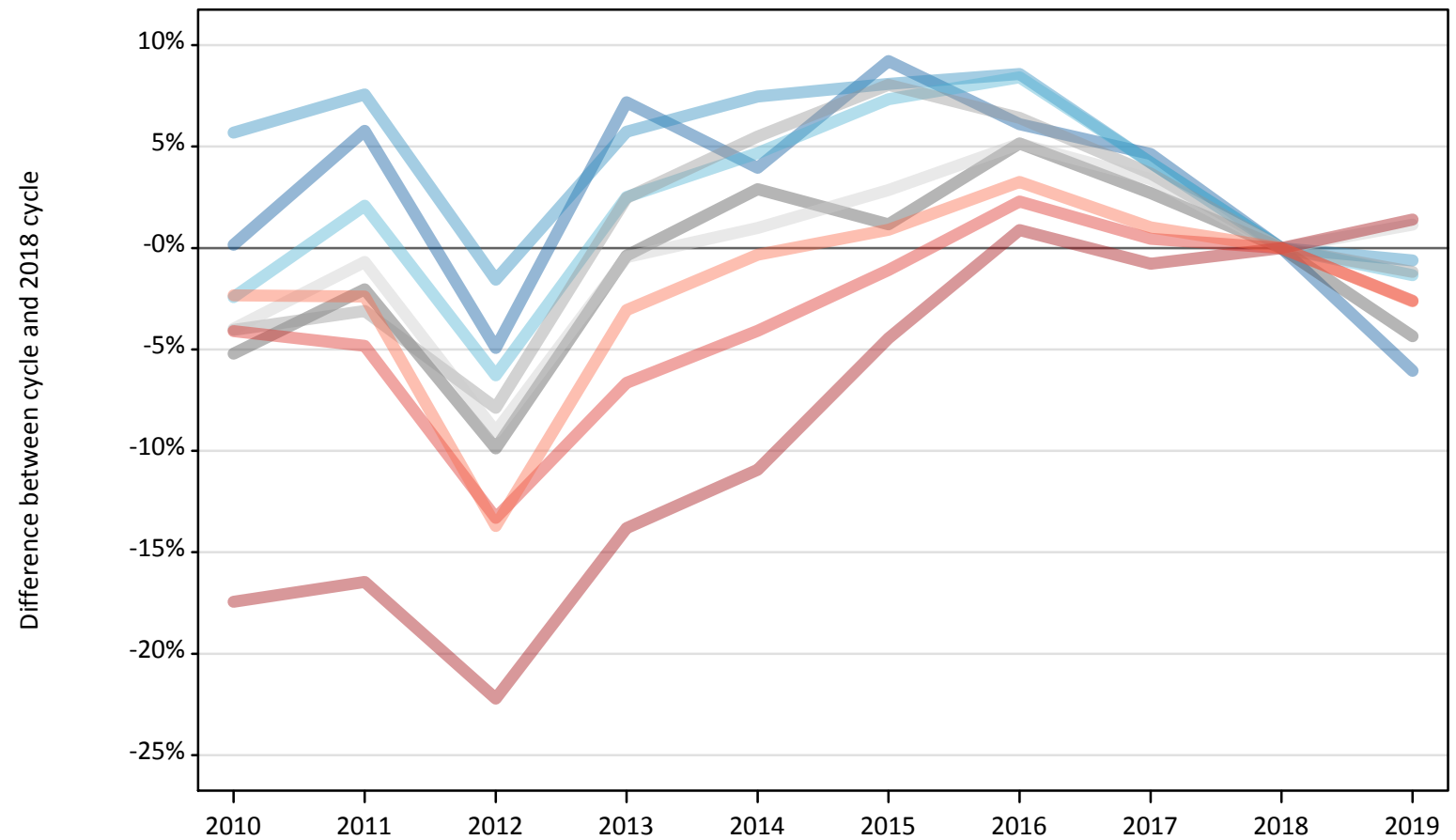
Daily Clearing Analysis: Region

Analysis at 00:05 on Thursday 15 August 2019 (A level results day)

R.1 Placed applicants by region of domicile: A level results day

Placed applicants: change relative to 2018 cycle totals

- North East
- North West
- Yorkshire and The Humber
- East Midlands
- West Midlands
- East of England
- London
- South East
- South West



Note: The percentage change is not plotted in the above chart for groups with fewer than 30 placed applicants in any one cycle.

R.2 Placed applicants by region of domicile: A level results day

Applicant Status	Domicile	2010	2011	2012	2013	2014	2015	2016	2017	2018	2019
Placed	North East	12,320	13,020	11,700	13,190	12,790	13,440	13,060	12,880	12,310	11,560
	North West	39,230	39,930	36,540	39,250	39,890	40,130	40,310	38,690	37,120	36,890
	Yorkshire and The Humber	25,750	26,940	24,730	27,050	27,630	28,320	28,610	27,500	26,390	26,040
	East Midlands	21,770	22,490	20,690	22,880	23,630	23,230	24,150	23,590	22,960	21,960
	West Midlands	28,850	29,130	27,700	30,810	31,720	32,480	31,990	31,170	30,060	29,710
	East of England	29,520	30,530	27,960	30,600	31,040	31,620	32,320	31,780	30,740	31,090
	London	45,890	46,430	43,230	47,910	49,510	53,110	56,070	55,150	55,580	56,360
	South East	48,200	47,830	43,570	46,920	48,210	49,710	51,410	50,490	50,260	48,950
	South West	27,670	27,660	24,450	27,470	28,240	28,590	29,260	28,620	28,330	27,590
	(England total)	279,200	283,960	260,570	286,070	292,650	300,630	307,170	299,850	293,750	290,160
	Scotland	26,640	26,380	26,220	26,910	27,910	30,570	31,930	32,390	33,180	31,920
	Northern Ireland	10,690	10,810	9,690	11,280	11,110	11,260	12,000	11,520	11,080	11,190
	Wales	14,310	14,180	14,910	15,240	15,980	16,220	16,630	16,110	15,960	15,620
	UK	330,850	335,330	311,390	339,500	347,650	358,680	367,730	359,860	353,960	348,890

R.3 Placed applicants by region of domicile: A level results day

Placed applicants: change relative to 2018 cycle totals

Applicant Status	Domicile	2010	2011	2012	2013	2014	2015	2016	2017	2018	2019
Placed	North East	0%	6%	-5%	7%	4%	9%	6%	5%	0%	-6%
	North West	6%	8%	-2%	6%	7%	8%	9%	4%	0%	-1%
	Yorkshire and The Humber	-2%	2%	-6%	3%	5%	7%	8%	4%	0%	-1%
	East Midlands	-5%	-2%	-10%	-0%	3%	1%	5%	3%	0%	-4%
	West Midlands	-4%	-3%	-8%	2%	6%	8%	6%	4%	0%	-1%
	East of England	-4%	-1%	-9%	-0%	1%	3%	5%	3%	0%	1%
	London	-17%	-16%	-22%	-14%	-11%	-4%	1%	-1%	0%	1%
	South East	-4%	-5%	-13%	-7%	-4%	-1%	2%	0%	0%	-3%
	South West	-2%	-2%	-14%	-3%	-0%	1%	3%	1%	0%	-3%
	(England total)	-5%	-3%	-11%	-3%	-0%	2%	5%	2%	0%	-1%
	Scotland	-20%	-20%	-21%	-19%	-16%	-8%	-4%	-2%	0%	-4%
	Northern Ireland	-3%	-2%	-13%	2%	0%	2%	8%	4%	0%	1%
	Wales	-10%	-11%	-7%	-5%	0%	2%	4%	1%	0%	-2%
	UK	-7%	-5%	-12%	-4%	-2%	1%	4%	2%	0%	-1%

Note: The percentage change is not recorded in the above table for groups with fewer than 10 placed applicants in that cycle or in the 2018 cycle.

R.4 Placed applicants by region of domicile: A level results day

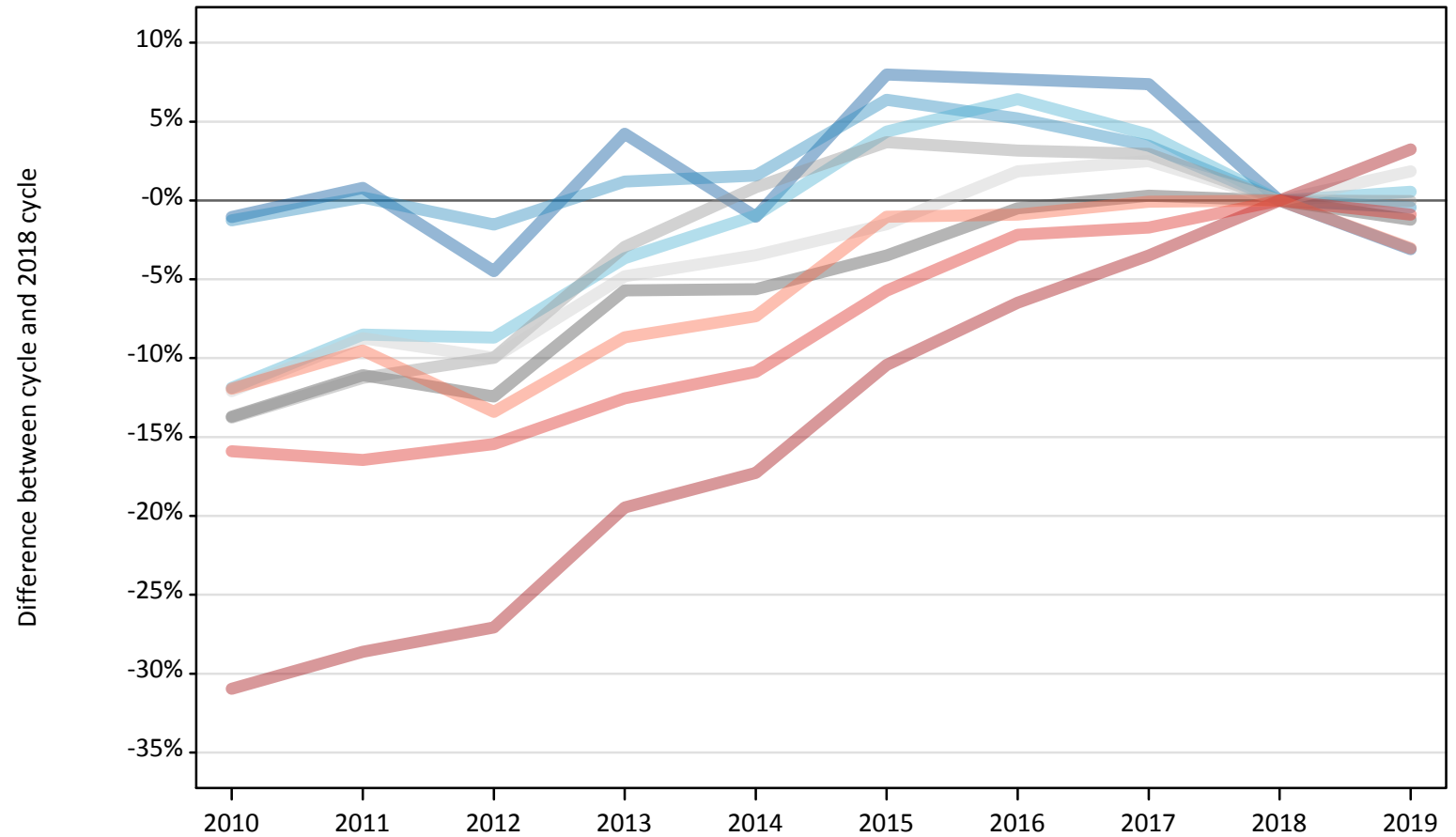
Placed applicants: absolute change relative to 2018 cycle totals

Applicant Status	Domicile	2010	2011	2012	2013	2014	2015	2016	2017	2018	2019
Placed	North East	20	710	-610	890	490	1,130	750	570	0	-740
	North West	2,110	2,810	-580	2,130	2,770	3,010	3,180	1,560	0	-230
	Yorkshire and The Humber	-640	550	-1,660	660	1,240	1,930	2,220	1,110	0	-350
	East Midlands	-1,200	-470	-2,270	-90	670	270	1,180	620	0	-1,000
	West Midlands	-1,210	-930	-2,370	740	1,650	2,420	1,930	1,100	0	-350
	East of England	-1,220	-210	-2,780	-140	300	880	1,580	1,040	0	350
	London	-9,690	-9,150	-12,350	-7,670	-6,070	-2,470	490	-430	0	780
	South East	-2,060	-2,430	-6,690	-3,340	-2,050	-550	1,150	230	0	-1,310
	South West	-660	-680	-3,880	-870	-90	260	930	290	0	-750
	(England total)	-14,550	-9,790	-33,180	-7,680	-1,100	6,880	13,420	6,100	0	-3,590
	Scotland	-6,530	-6,790	-6,960	-6,260	-5,270	-2,610	-1,250	-790	0	-1,260
	Northern Ireland	-390	-270	-1,390	200	30	180	930	440	0	120
	Wales	-1,640	-1,780	-1,050	-720	30	260	670	150	0	-340
	UK	-23,110	-18,630	-42,570	-14,460	-6,310	4,720	13,760	5,900	0	-5,080

R.5 Placed 18 year old applicants by region of domicile: A level results day

Placed 18 year old applicants: change relative to 2018 cycle totals

- North East
- North West
- Yorkshire and The Humber
- East Midlands
- West Midlands
- East of England
- London
- South East
- South West



Note: The percentage change is not plotted in the above chart for groups with fewer than 30 placed applicants in any one cycle.

R.6 Placed 18 year old applicants by region of domicile: A level results day

Applicant Status	Domicile	2010	2011	2012	2013	2014	2015	2016	2017	2018	2019
Placed	North East	6,560	6,690	6,340	6,910	6,570	7,160	7,140	7,120	6,630	6,430
	North West	21,310	21,620	21,250	21,840	21,920	22,960	22,710	22,330	21,580	21,490
	Yorkshire and The Humber	13,640	14,160	14,130	14,910	15,330	16,150	16,470	16,130	15,480	15,560
	East Midlands	11,810	12,170	11,980	12,900	12,920	13,210	13,620	13,730	13,690	13,520
	West Midlands	14,830	15,260	15,480	16,690	17,340	17,830	17,740	17,700	17,190	17,190
	East of England	16,700	17,340	17,100	18,090	18,340	18,710	19,350	19,470	19,000	19,350
	London	21,140	21,860	22,330	24,660	25,330	27,420	28,630	29,550	30,620	31,610
	South East	25,780	25,610	25,920	26,810	27,320	28,900	29,980	30,120	30,650	30,380
	South West	13,380	13,750	13,160	13,880	14,080	15,040	15,060	15,180	15,200	14,730
	(England total)	145,150	148,450	147,700	156,690	159,140	167,390	170,700	171,330	170,030	170,250
	Scotland	14,210	13,550	13,630	13,740	14,070	14,130	14,370	14,270	14,400	13,840
	Northern Ireland	6,830	6,660	6,030	6,930	6,620	6,740	6,960	6,840	6,530	6,590
	Wales	7,990	7,680	8,280	8,310	8,640	8,980	9,200	8,820	9,030	8,680
	UK	174,170	176,350	175,640	185,670	188,460	197,240	201,230	201,270	199,990	199,370

R.7 Placed 18 year old applicants by region of domicile: A level results day

Placed 18 year old applicants: change relative to 2018 cycle totals

Applicant Status	Domicile	2010	2011	2012	2013	2014	2015	2016	2017	2018	2019
Placed	North East	-1%	1%	-4%	4%	-1%	8%	8%	7%	0%	-3%
	North West	-1%	0%	-2%	1%	2%	6%	5%	3%	0%	-0%
	Yorkshire and The Humber	-12%	-8%	-9%	-4%	-1%	4%	6%	4%	0%	1%
	East Midlands	-14%	-11%	-12%	-6%	-6%	-4%	-0%	0%	0%	-1%
	West Midlands	-14%	-11%	-10%	-3%	1%	4%	3%	3%	0%	-0%
	East of England	-12%	-9%	-10%	-5%	-3%	-2%	2%	2%	0%	2%
	London	-31%	-29%	-27%	-19%	-17%	-10%	-6%	-3%	0%	3%
	South East	-16%	-16%	-15%	-13%	-11%	-6%	-2%	-2%	0%	-1%
	South West	-12%	-10%	-13%	-9%	-7%	-1%	-1%	-0%	0%	-3%
	(England total)	-15%	-13%	-13%	-8%	-6%	-2%	0%	1%	0%	0%
	Scotland	-1%	-6%	-5%	-5%	-2%	-2%	-0%	-1%	0%	-4%
	Northern Ireland	5%	2%	-8%	6%	1%	3%	7%	5%	0%	1%
	Wales	-12%	-15%	-8%	-8%	-4%	-1%	2%	-2%	0%	-4%
	UK	-13%	-12%	-12%	-7%	-6%	-1%	1%	1%	0%	-0%

Note: The percentage change is not recorded in the above table for groups with fewer than 10 placed applicants in that cycle or in the 2018 cycle.

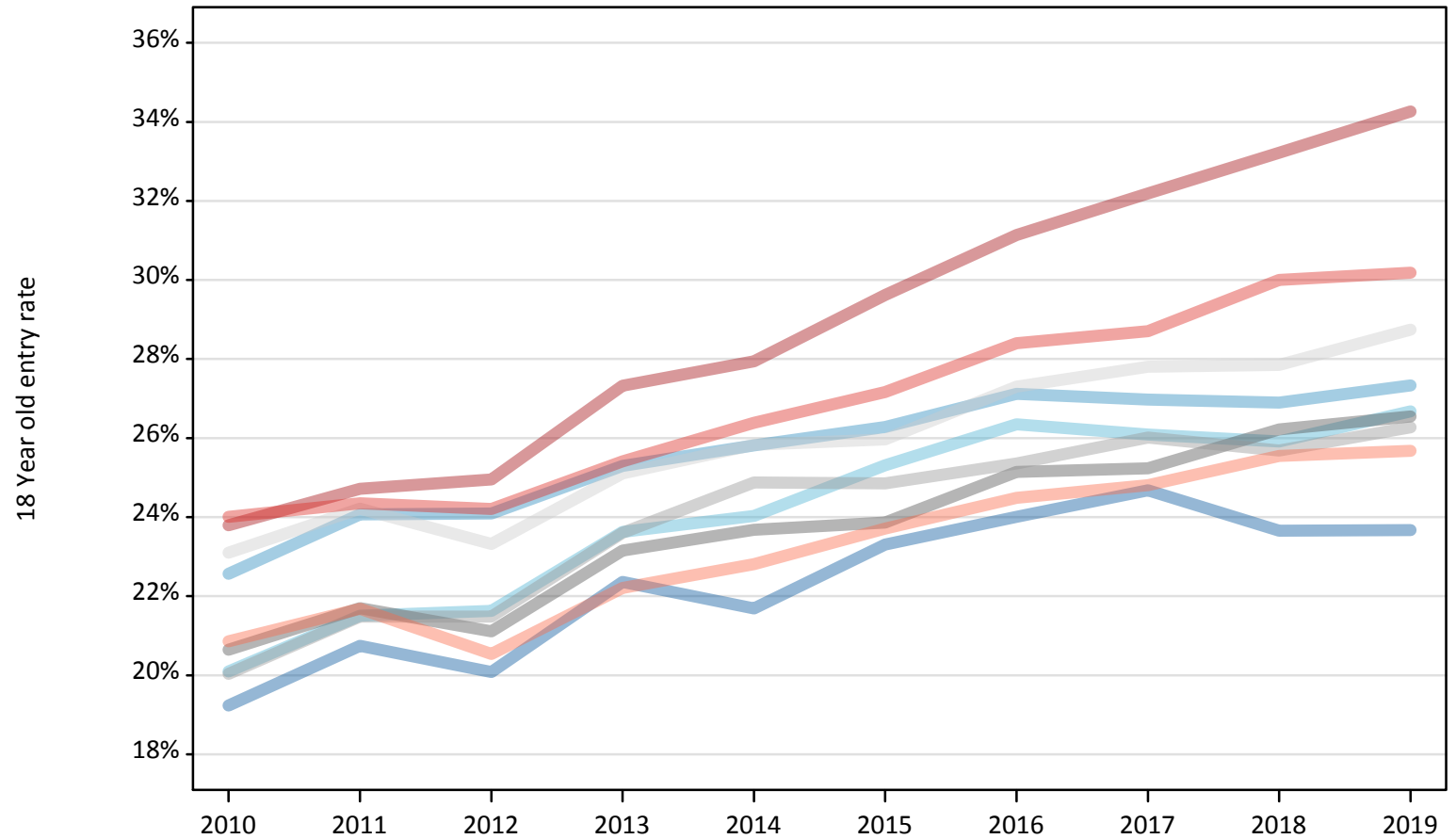
R.8 Placed 18 year old applicants by region of domicile: A level results day

Placed 18 year old applicants: absolute change relative to 2018 cycle totals

Applicant Status	Domicile	2010	2011	2012	2013	2014	2015	2016	2017	2018	2019
Placed	North East	-70	50	-300	280	-70	530	510	490	0	-210
	North West	-270	40	-330	260	340	1,380	1,120	750	0	-100
	Yorkshire and The Humber	-1,840	-1,320	-1,350	-570	-150	670	990	650	0	90
	East Midlands	-1,880	-1,520	-1,700	-780	-770	-480	-70	40	0	-170
	West Midlands	-2,370	-1,930	-1,720	-510	140	640	540	510	0	-10
	East of England	-2,300	-1,660	-1,900	-910	-660	-290	350	470	0	350
	London	-9,480	-8,760	-8,290	-5,960	-5,290	-3,190	-1,990	-1,070	0	990
	South East	-4,880	-5,050	-4,730	-3,840	-3,330	-1,750	-670	-530	0	-280
	South West	-1,810	-1,450	-2,040	-1,320	-1,120	-160	-140	-10	0	-460
	(England total)	-24,890	-21,580	-22,340	-13,350	-10,900	-2,650	660	1,300	0	220
	Scotland	-190	-850	-770	-660	-330	-260	-30	-130	0	-560
	Northern Ireland	300	130	-500	400	90	210	430	320	0	60
	Wales	-1,040	-1,350	-750	-720	-390	-50	170	-210	0	-350
	UK	-25,820	-23,650	-24,350	-14,320	-11,530	-2,750	1,240	1,280	0	-620

R.9 Placed 18 year old applicants by region of domicile: A level results day
Placed 18 year old applicants: entry rate

- North East
- North West
- Yorkshire and The Humber
- East Midlands
- West Midlands
- East of England
- London
- South East
- South West



R.10 Placed 18 year old applicants by region of domicile: A level results day

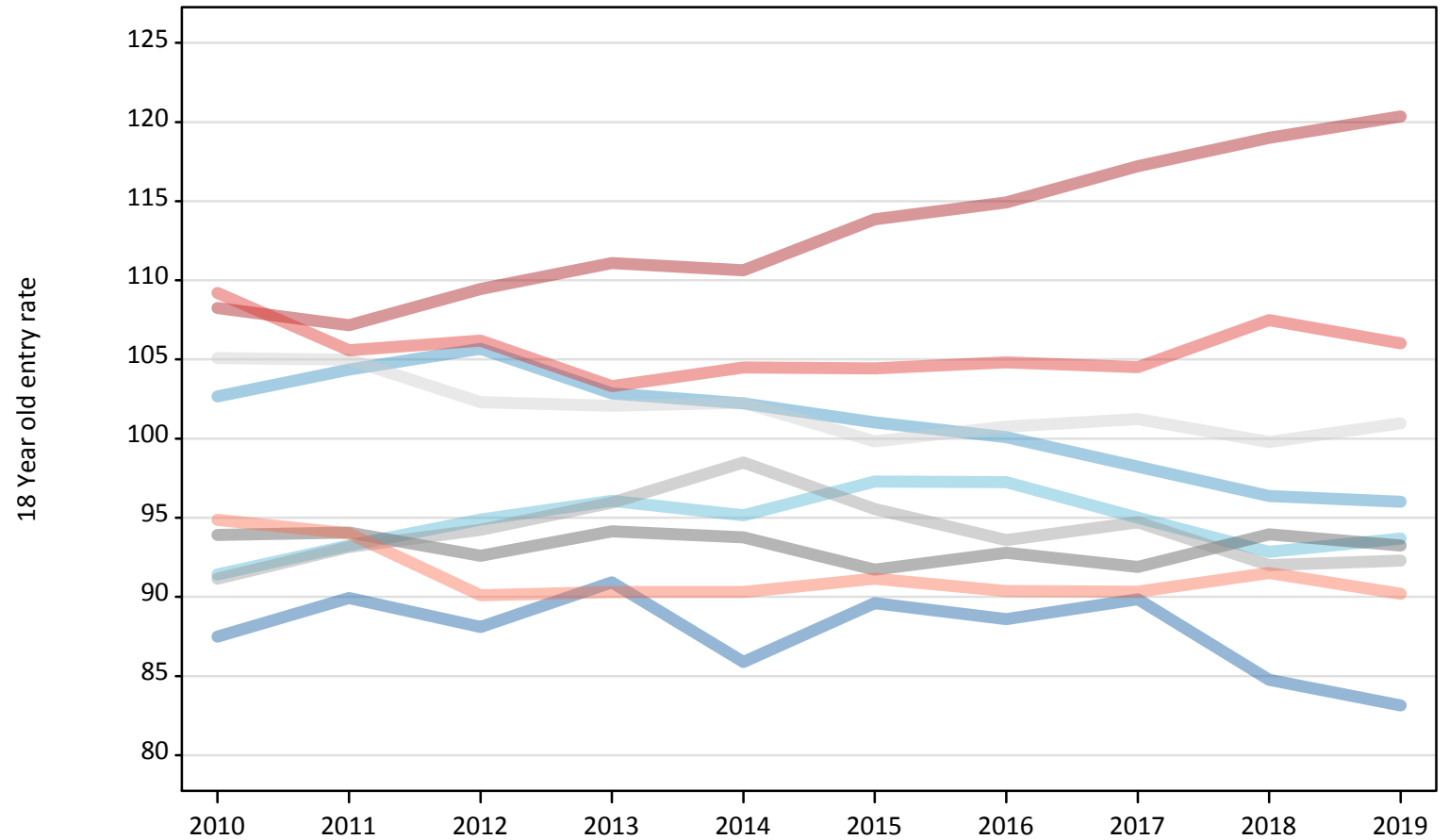
Placed 18 year old applicants: entry rate

Applicant Status	Domicile	2010	2011	2012	2013	2014	2015	2016	2017	2018	2019
Placed	North East	19.2%	20.7%	20.1%	22.4%	21.7%	23.3%	24.0%	24.7%	23.7%	23.7%
	North West	22.6%	24.1%	24.1%	25.3%	25.8%	26.3%	27.1%	27.0%	26.9%	27.3%
	Yorkshire and The Humber	20.1%	21.5%	21.6%	23.6%	24.0%	25.3%	26.4%	26.1%	25.9%	26.7%
	East Midlands	20.6%	21.7%	21.1%	23.2%	23.7%	23.9%	25.1%	25.2%	26.2%	26.5%
	West Midlands	20.0%	21.5%	21.5%	23.6%	24.9%	24.9%	25.4%	26.0%	25.7%	26.3%
	East of England	23.1%	24.2%	23.3%	25.1%	25.8%	26.0%	27.3%	27.8%	27.9%	28.7%
	London	23.8%	24.7%	24.9%	27.3%	27.9%	29.6%	31.1%	32.2%	33.2%	34.3%
	South East	24.0%	24.4%	24.2%	25.4%	26.4%	27.2%	28.4%	28.7%	30.0%	30.2%
	South West	20.9%	21.7%	20.5%	22.2%	22.8%	23.7%	24.5%	24.8%	25.5%	25.7%
	(England total)	22.0%	23.1%	22.8%	24.6%	25.3%	26.0%	27.1%	27.5%	27.9%	28.5%
	Scotland	22.2%	21.6%	22.0%	22.3%	23.0%	23.5%	24.4%	24.9%	25.9%	25.7%
	Northern Ireland	26.8%	26.6%	24.0%	28.3%	27.3%	27.1%	28.5%	28.3%	28.1%	29.4%
	Wales	20.0%	19.9%	21.5%	22.0%	23.0%	23.8%	25.3%	24.8%	26.3%	25.8%
	UK	22.1%	22.9%	22.7%	24.4%	25.0%	25.7%	26.8%	27.2%	27.7%	28.2%

R.11 Placed 18 year old applicants by region of domicile: A level results day

Placed 18 year old applicants: entry rates (indexed to 100 = England)

- North East
- North West
- Yorkshire and The Humber
- East Midlands
- West Midlands
- East of England
- London
- South East
- South West



R.12 Placed 18 year old applicants by region of domicile: A level results day

Placed 18 year old applicants: entry rate (indexed to 100 = England)

Applicant Status	Domicile	2010	2011	2012	2013	2014	2015	2016	2017	2018	2019
Placed	North East	87	90	88	91	86	90	89	90	85	83
	North West	103	104	106	103	102	101	100	98	96	96
	Yorkshire and The Humber	91	93	95	96	95	97	97	95	93	94
	East Midlands	94	94	93	94	94	92	93	92	94	93
	West Midlands	91	93	94	96	98	96	94	95	92	92
	East of England	105	105	102	102	102	100	101	101	100	101
	London	108	107	109	111	111	114	115	117	119	120
	South East	109	106	106	103	104	104	105	105	107	106
	South West	95	94	90	90	90	91	90	90	92	90
	(England total)	100	100	100	100	100	100	100	100	100	100