

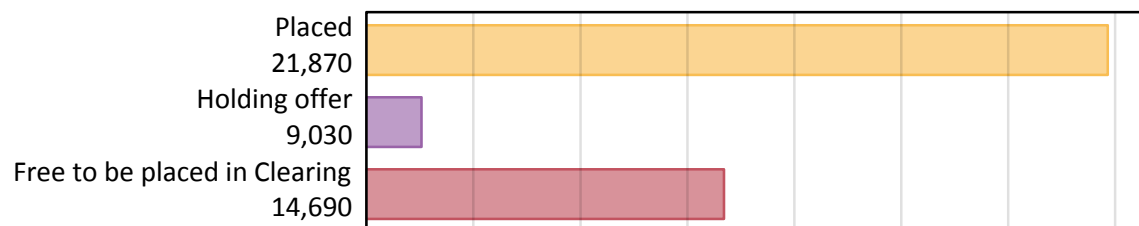
Daily Clearing Analysis: Overview

B7 Nursing analysis at 00:05 on Thursday 15 August 2019 (A level results day)

AB.1 Placed applicants to nursing from all domiciles, 2019 cycle

Applicant type	Status	2019
Main scheme	Placed (Clearing)	270
	Placed (Adjustment)	0
	Placed (Firm)	20,100
	Placed (Insurance)	380
	Placed (Other)	1,020
	Holding offer	9,030
	Free to be placed in Clearing	14,690
Direct to Clearing	Placed (Direct to Clearing)	100
	Other (Direct to Clearing)	310
All applicants	Placed	21,870

AB.2 Summary of nursing applicants who are placed, holding offers or free to be placed in Clearing (all domiciles)



AB.3 Placed applicants to nursing from all domiciles: A level results day

Placed applicants to nursing: difference between cycle and 2018 cycle



Note: The percentage change is not plotted in the above chart for groups with fewer than 30 placed applicants in any one cycle.

AB.4 Placed applicants to nursing from all domiciles: A level results day

Placed applicants to nursing: applicants at A level results day

Applicant type	Status	2010	2011	2012	2013	2014	2015	2016	2017	2018	2019
All applicants	Placed	21,410	18,480	18,070	18,710	20,950	20,760	22,820	21,490	21,030	21,870

AB.5 Placed applicants to nursing from all domiciles: A level results day

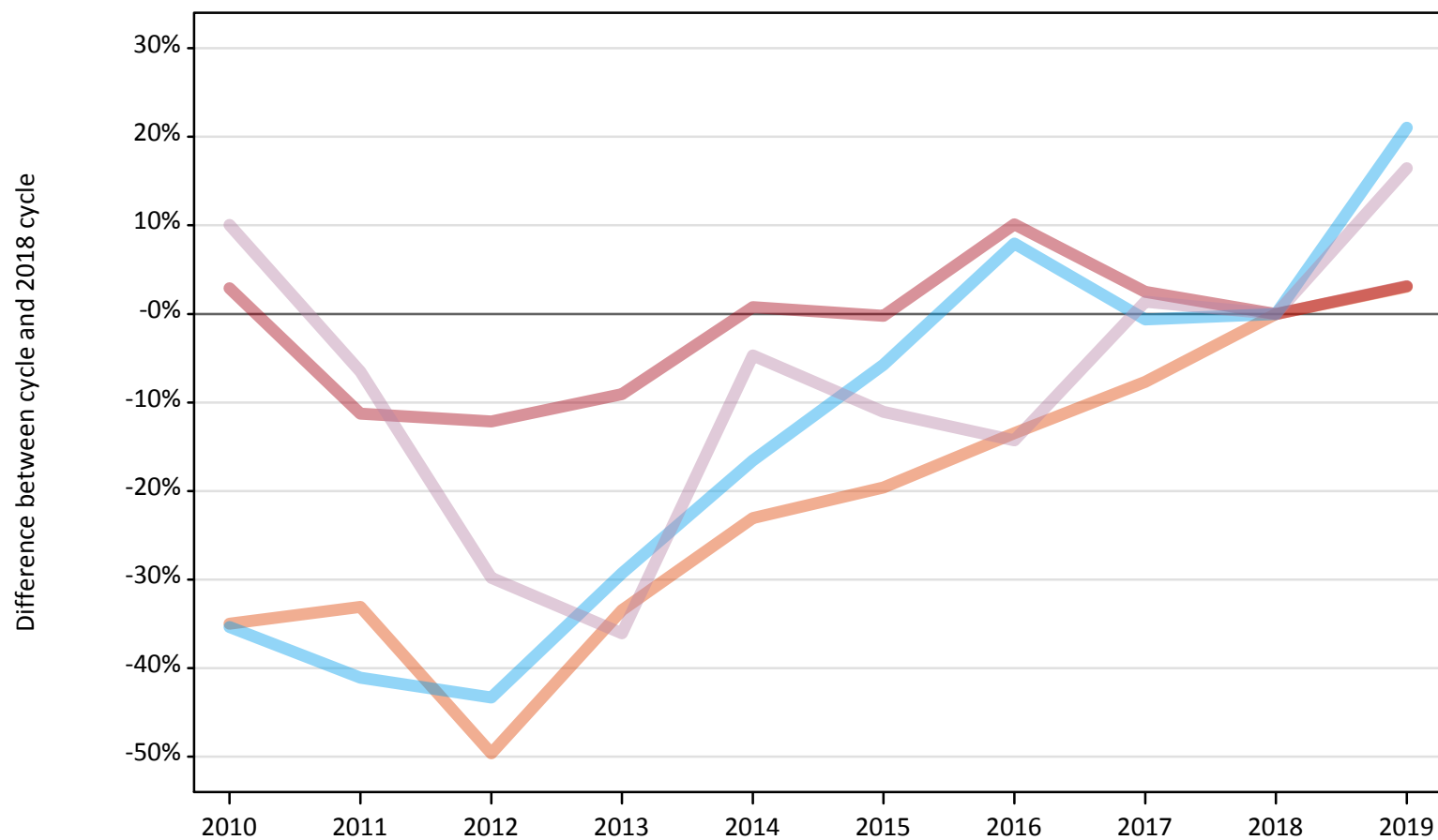
Placed applicants to nursing: difference between cycle and 2018 cycle

Applicant type	Status	2010	2011	2012	2013	2014	2015	2016	2017	2018	2019
All applicants	Placed	2%	-12%	-14%	-11%	-0%	-1%	9%	2%	0%	4%

Note: The percentage change is not recorded in the above table for groups with fewer than 10 placed applicants in that cycle or in the 2018 cycle.

AB.6 Placed main scheme applicants to nursing from all domiciles: A level results day
All Main scheme placed routes (excluding Adjustment): difference between cycle and 2018 cycle

- Placed (Clearing)
- Placed (Firm)
- Placed (Insurance)
- Placed (Other)



Note: The percentage change is not plotted in the above chart for groups with fewer than 30 placed applicants in any one cycle.

AB.7 Placed main scheme applicants to nursing from all domiciles: A level results day

All Main scheme placed routes (excluding Adjustment): applicants at A level results day

Applicant type	Status	2010	2011	2012	2013	2014	2015	2016	2017	2018	2019
Main scheme	Placed (Clearing)	170	170	130	170	200	210	230	240	260	270
	Placed (Firm)	20,050	17,290	17,120	17,720	19,630	19,440	21,460	19,970	19,490	20,100
	Placed (Insurance)	200	190	180	220	260	300	340	310	310	380
	Placed (Other)	960	820	620	560	840	780	750	890	880	1,020

AB.8 Placed main scheme applicants to nursing from all domiciles: A level results day

All Main scheme placed routes (excluding Adjustment): difference between cycle and 2018 cycle

Applicant type	Status	2010	2011	2012	2013	2014	2015	2016	2017	2018	2019
Main scheme	Placed (Clearing)	-35%	-33%	-50%	-33%	-23%	-20%	-13%	-8%	0%	3%
	Placed (Firm)	3%	-11%	-12%	-9%	1%	-0%	10%	3%	0%	3%
	Placed (Insurance)	-35%	-41%	-43%	-29%	-17%	-6%	8%	-1%	0%	21%
	Placed (Other)	10%	-7%	-30%	-36%	-5%	-11%	-14%	1%	0%	16%

Note: The percentage change is not recorded in the above table for groups with fewer than 10 placed applicants in that cycle or in the 2018 cycle.

AB.9 Main scheme applicants placed to nursing through adjustment: A level results day

Placed through adjustment: difference between cycle and 2018 cycle

[This chart is not part of this report]

AB.10 Main scheme applicants placed to nursing through adjustment: A level results day

Placed through adjustment: applicants at A level results day

[Analysis on placed by adjustment available from 16 August 2019]

AB.11 Main scheme applicants placed to nursing through adjustment: A level results day

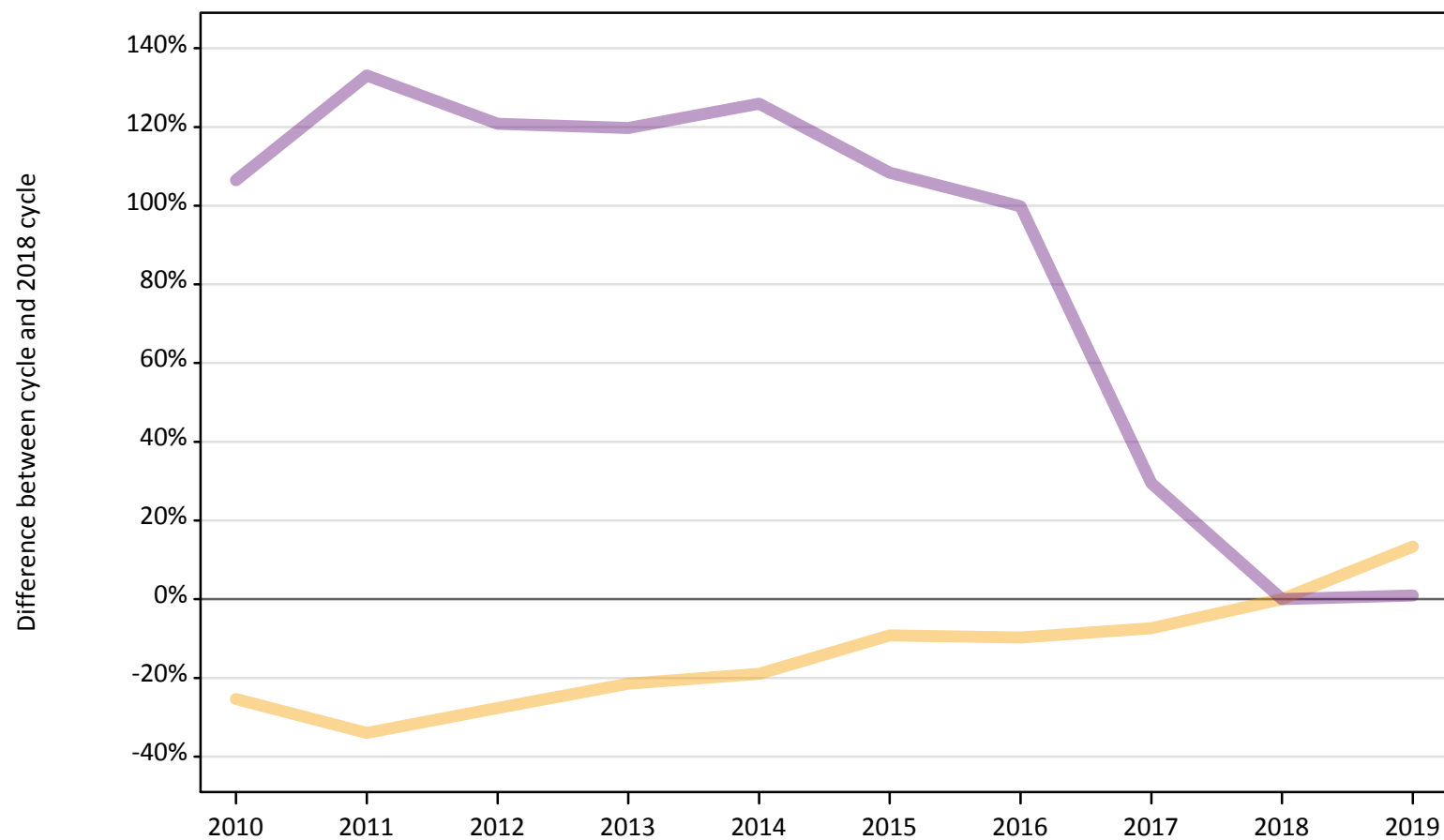
Placed through adjustment: difference between cycle and 2018 cycle

[This table is not part of this report]

AB.12 Main scheme applicants to nursing not currently placed from all domiciles: A level results day

Applicants in unplaced states: difference between cycle and 2018 cycle

— Holding offer
— Free to be placed in Clearing



Note: The percentage change is not plotted in the above chart for groups with fewer than 30 unplaced applicants in any one cycle.

AB.13 Main scheme applicants to nursing not currently placed from all domiciles: A level results day

Applicants in unplaced states: applicants at A level results day

Applicant type	Status	2010	2011	2012	2013	2014	2015	2016	2017	2018	2019
Main scheme	Holding offer	5,940	5,250	5,760	6,250	6,450	7,230	7,190	7,370	7,960	9,030
	Free to be placed in Clearing	30,030	33,900	32,110	31,960	32,850	30,310	29,060	18,830	14,540	14,690

AB.14 Main scheme applicants to nursing not currently placed from all domiciles: A level results day

Applicants in unplaced states: difference between cycle and 2018 cycle

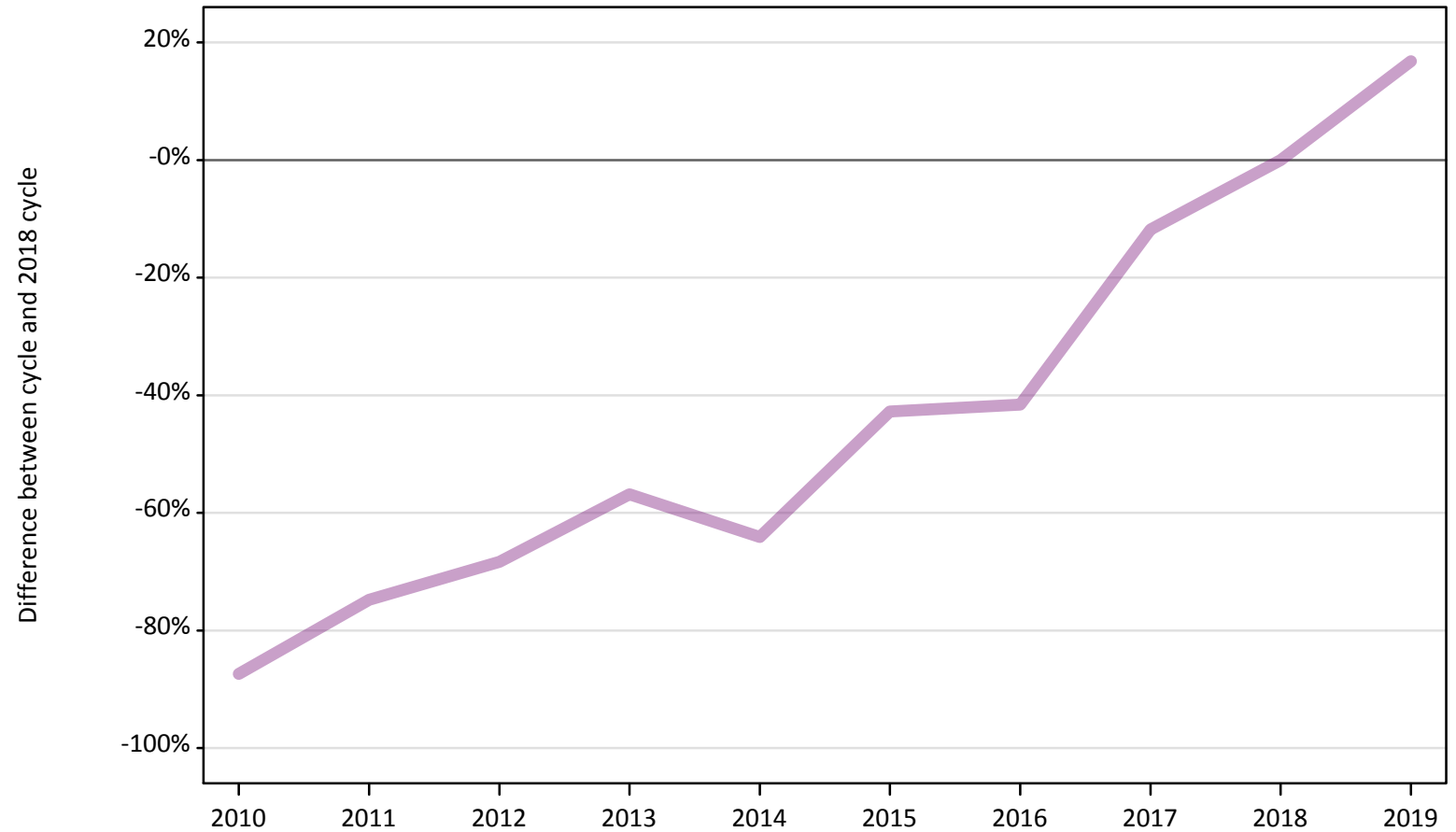
Applicant type	Status	2010	2011	2012	2013	2014	2015	2016	2017	2018	2019
Main scheme	Holding offer	-25%	-34%	-28%	-22%	-19%	-9%	-10%	-7%	0%	13%
	Free to be placed in Clearing	106%	133%	121%	120%	126%	108%	100%	29%	0%	1%

Note: The percentage change is not recorded in the above table for groups with fewer than 10 unplaced applicants in that cycle or in the 2018 cycle.

AB.15 Direct to Clearing applicants from all domiciles: A level results day

Direct to Clearing: difference between cycle and 2018 cycle

- Placed (Direct to Clearing)
- Other (Direct to Clearing)



Note: The percentage change is not plotted in the above chart for groups with fewer than 30 placed applicants in any one cycle.

AB.16 Direct to Clearing applicants from all domiciles: A level results day

Direct to Clearing A level results day

Applicant type	Status	2010	2011	2012	2013	2014	2015	2016	2017	2018	2019
Direct to Clearing	Placed (Direct to Clearing)	20	10	20	30	20	30	50	80	90	100
	Other (Direct to Clearing)	30	70	80	110	90	150	150	230	260	310

AB.17 Direct to Clearing applicants from all domiciles: A level results day

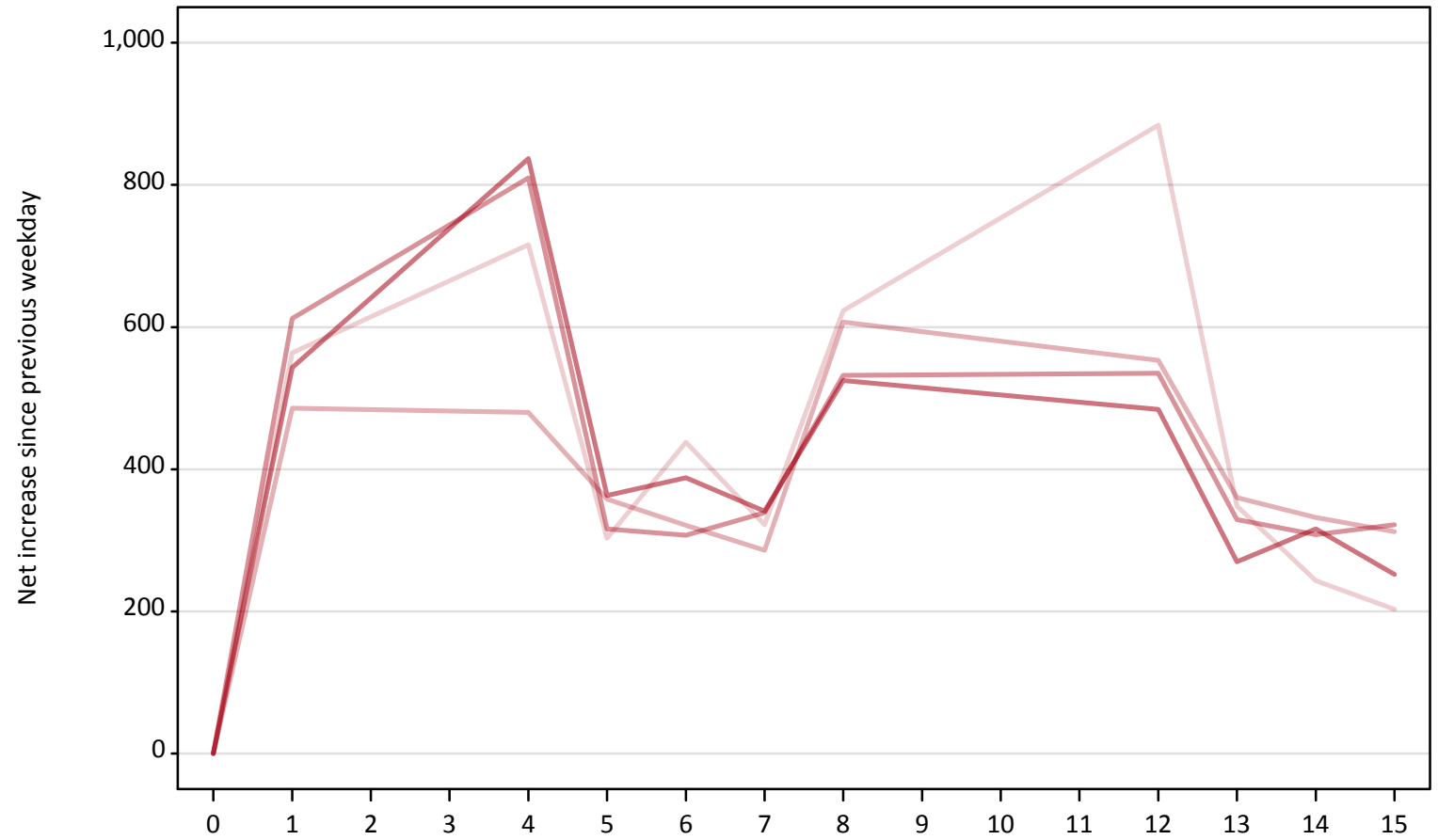
Direct to Clearing: difference between cycle and 2018 cycle

Applicant type	Status	2010	2011	2012	2013	2014	2015	2016	2017	2018	2019
Direct to Clearing	Placed (Direct to Clearing)	-74%	-86%	-77%	-65%	-81%	-66%	-49%	-16%	0%	6%
	Other (Direct to Clearing)	-87%	-75%	-68%	-57%	-64%	-43%	-42%	-12%	0%	17%

Note: The percentage change is not recorded in the above table for groups with fewer than 10 placed applicants in that cycle or in the 2018 cycle.

AB.18 All Placed: Daily net change (from all domiciles)
Net increase since previous weekday (2019 cycle up to A level results day)

- 2015
- 2016
- 2017
- 2018
- 2019



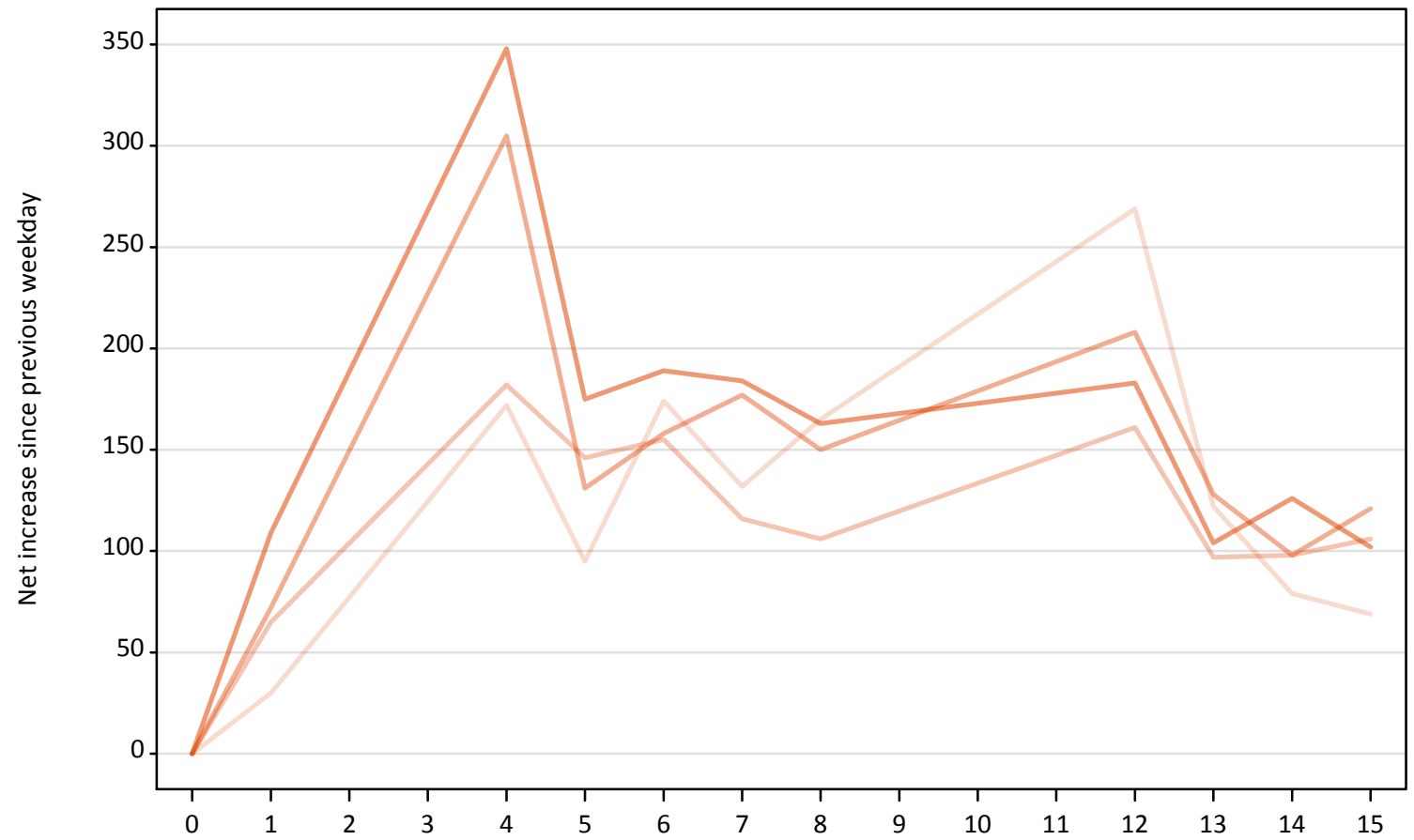
AB.19 All Placed: Daily net change (from all domiciles)

Net increase since previous weekday (2019 cycle up to A level results day)

Applicant status, days since A level results day	2015	2016	2017	2018	2019
All Placed	0	0	0	0	0
	1	560	490	610	540
	4	720	480	810	840
	5	300	360	320	360
	6	440	320	310	390
	7	320	290	340	340
	8	620	610	530	530
	12	880	550	540	480
	13	350	360	330	270
	14	240	330	310	320
	15	200	310	320	250

AB.20 Placed through Clearing only: Daily net change (from all domiciles)
Net increase since previous weekday (2019 cycle up to A level results day)

- 2015
- 2016
- 2017
- 2018
- 2019



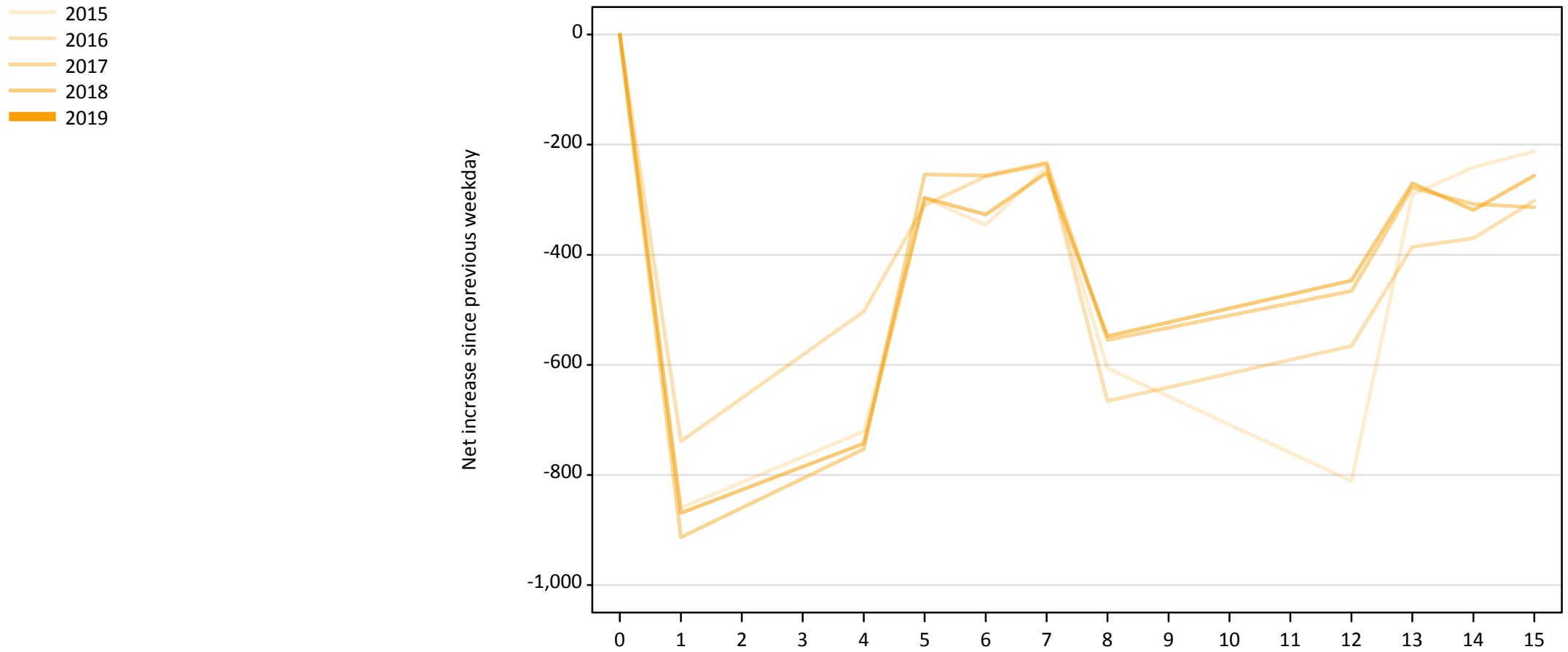
AB.21 Placed through Clearing only: Daily net change (from all domiciles)

Net increase since previous weekday (2019 cycle up to A level results day)

Applicant status, days since A level results day		2015	2016	2017	2018	2019
Placed through Clearing only	0	0	0	0	0	0
	1	30	70	70	110	
	4	170	180	310	350	
	5	100	150	130	180	
	6	170	160	160	190	
	7	130	120	180	180	
	8	170	110	150	160	
	12	270	160	210	180	
	13	120	100	130	100	
	14	80	100	100	130	
	15	70	110	120	100	

AB.22 Holding Offer: Daily net change (from all domiciles)

Net increase since previous weekday (2019 cycle up to A level results day)



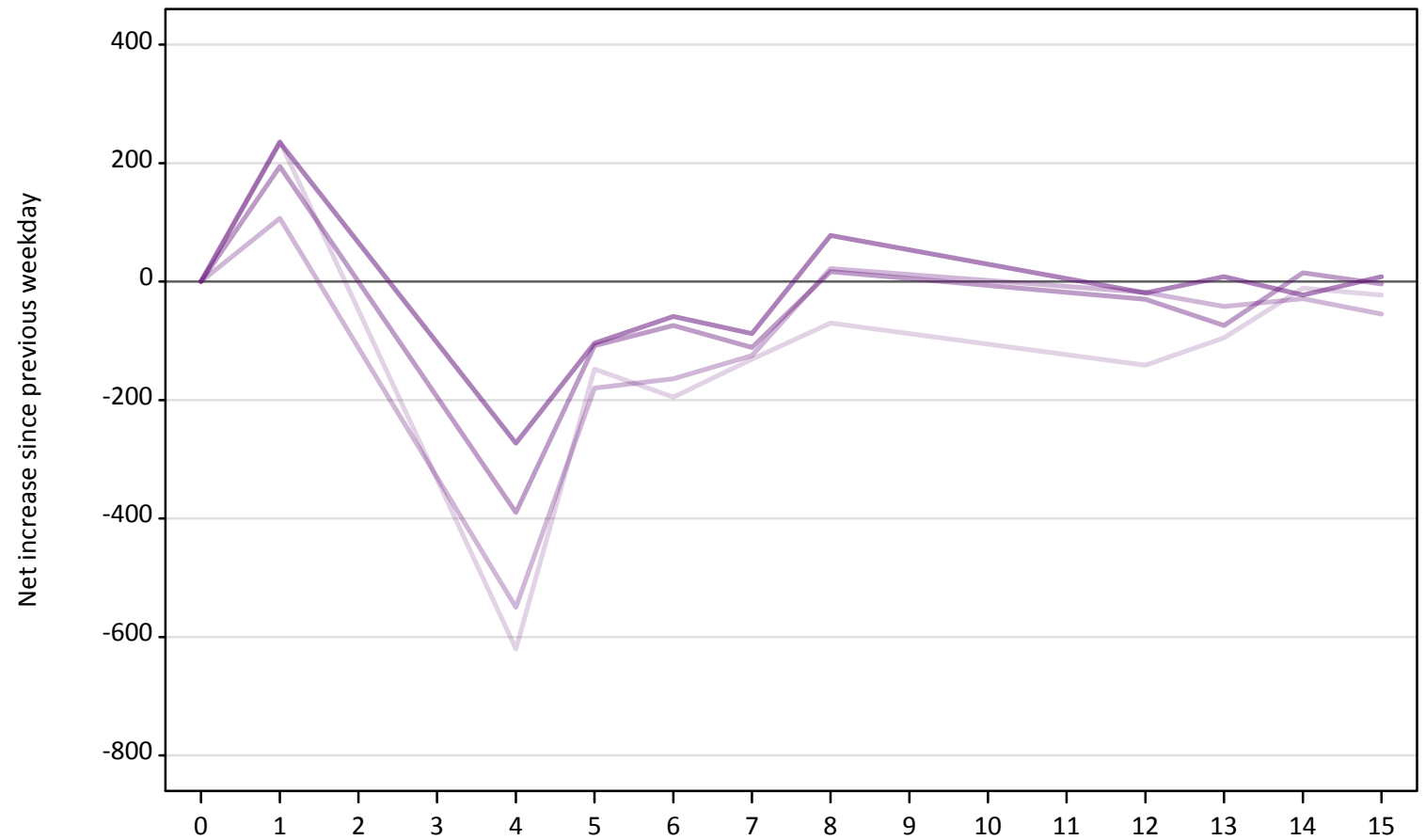
AB.23 Holding Offer: Daily net change (from all domiciles)

Net increase since previous weekday (2019 cycle up to A level results day)

Applicant status, days since A level results day		2015	2016	2017	2018	2019
Holding Offer	0	0	0	0	0	0
	1	-860	-740	-910	-870	
	4	-720	-500	-750	-740	
	5	-300	-310	-250	-300	
	6	-350	-260	-260	-330	
	7	-240	-240	-230	-250	
	8	-610	-670	-560	-550	
	12	-810	-570	-470	-450	
	13	-290	-390	-280	-270	
	14	-240	-370	-310	-320	
	15	-210	-300	-310	-260	

AB.24 Free to be placed in Clearing: Daily net change (from all domiciles)
Net increase since previous weekday (2019 cycle up to A level results day)

- 2015
- 2016
- 2017
- 2018
- 2019



AB.25 Free to be placed in Clearing: Daily net change (from all domiciles)

Net increase since previous weekday (2019 cycle up to A level results day)

Applicant status, days since A level results day		2015	2016	2017	2018	2019
Free to be placed in Clearing	0	0	0	0	0	0
	1	240	110	190	240	
	4	-620	-550	-390	-270	
	5	-150	-180	-110	-100	
	6	-200	-160	-70	-60	
	7	-130	-130	-110	-90	
	8	-70	20	20	80	
	12	-140	-20	-30	-20	
	13	-100	-40	-70	10	
	14	-10	-30	20	-20	
	15	-20	-60	0	10	