

Daily Clearing Analysis: Country

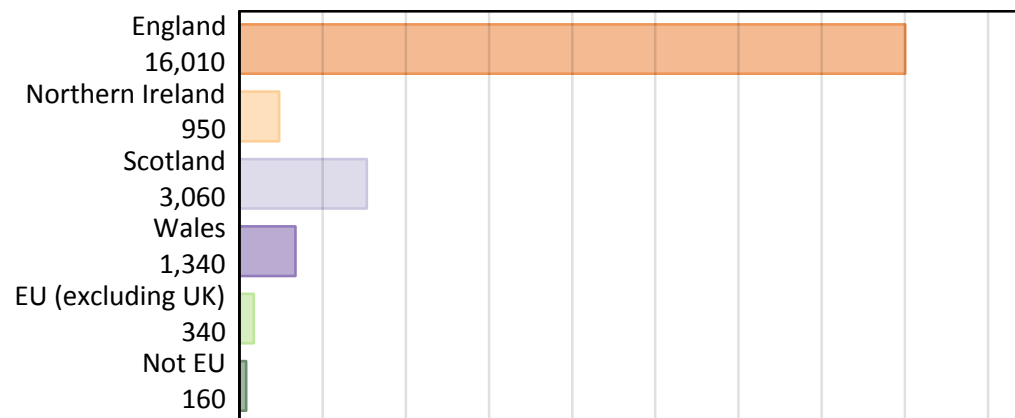
B7 Nursing analysis at 00:05 on Thursday 15 August 2019 (A level results day)

BB.1 Placed applicants to nursing by country of provider and domicile, 2019 cycle

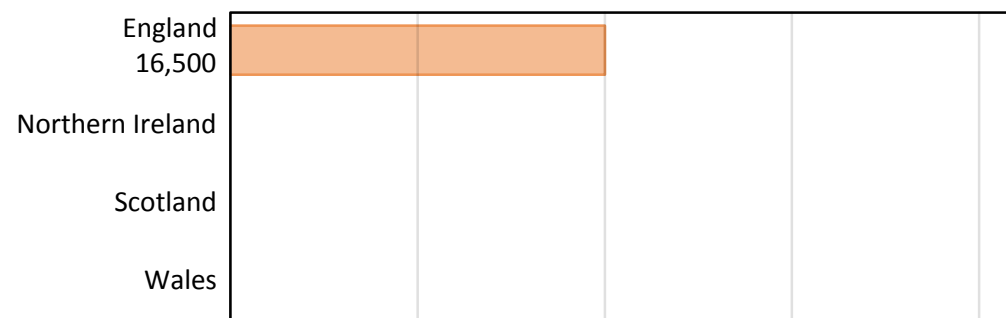
Domicile of applicant	Country of provider				
	England	Northern Ireland	Scotland	Wales	UK
England	15,790				16,010
Northern Ireland	150				950
Scotland	20				3,060
Wales	280				1,340
EU (excluding UK)	120				340
Not EU	140				160
All	16,500				21,870

Note that figures for providers in Northern Ireland, Scotland, and Wales are not reported here.

BB.2 Placed applicants to nursing by domicile group



BB.3 Placed applicants to nursing by country of provider

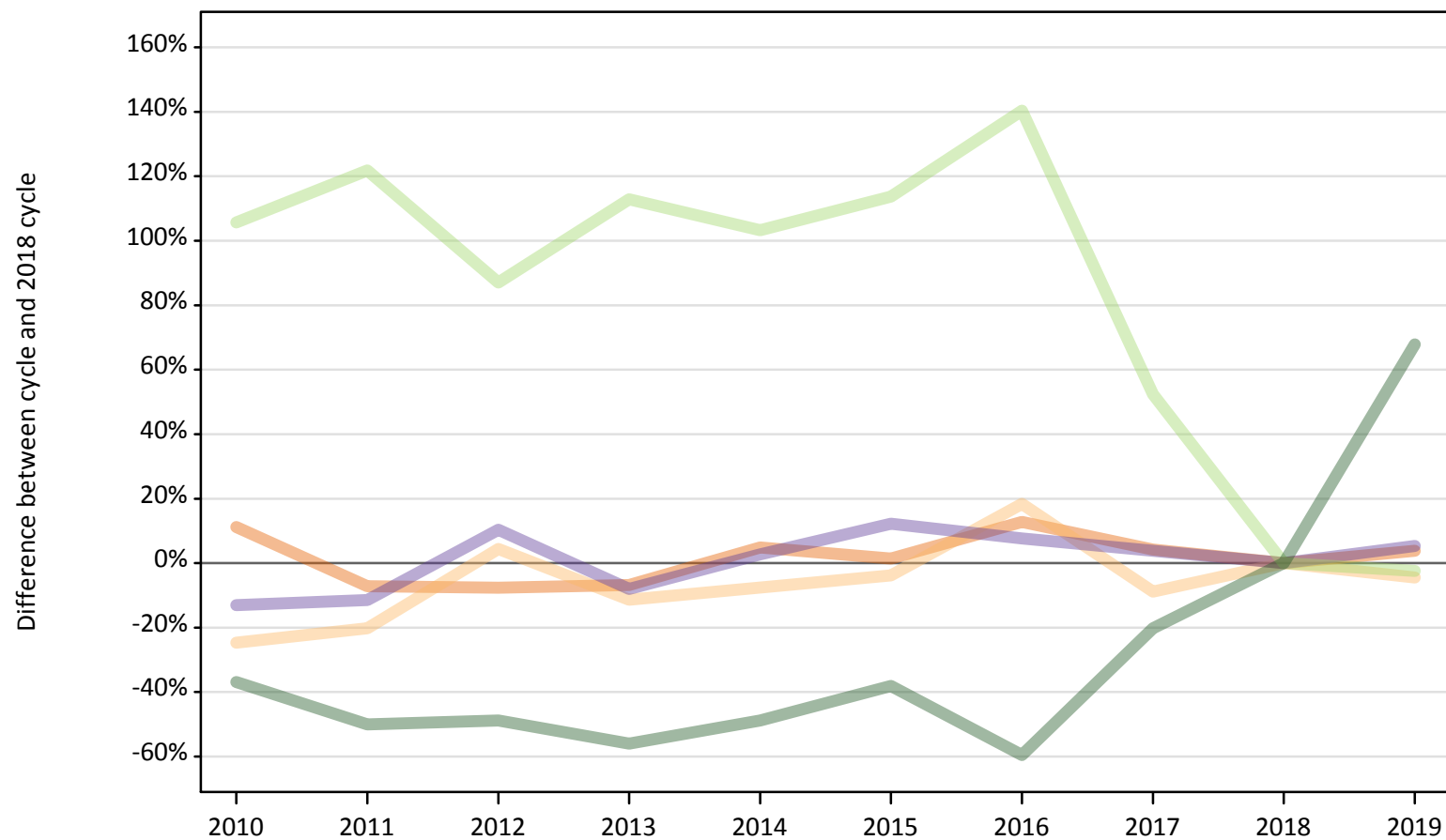


Note that figures for providers in Northern Ireland, Scotland, and Wales are not reported here.

BB.4 Placed applicants to nursing at A level results day: providers in England

Selected applicant domiciles: difference between cycle and 2018 cycle (at A level results day)

- England
- Northern Ireland
- Scotland
- Wales
- EU (excluding UK)
- Not EU



Note: The percentage change is not plotted in the above chart for groups with fewer than 30 placed applicants in any one cycle.

BB.5 Placed applicants to nursing at A level results day: providers in England

Placed applicants to nursing by domicile (at A level results day)

Domicile of applicant	2010	2011	2012	2013	2014	2015	2016	2017	2018	2019
England	16,910	14,120	14,050	14,170	15,940	15,420	17,150	15,850	15,210	15,790
Northern Ireland	120	130	170	140	150	150	190	140	160	150
Scotland	30	30	40	20	40	20	30	20	10	20
Wales	230	230	290	240	270	290	280	270	260	280
EU (excluding UK)	260	280	230	260	250	270	300	190	120	120
Not EU	50	40	40	40	40	50	30	70	80	140

BB.6 Placed applicants to nursing at A level results day: providers in England

Selected applicant domiciles: difference between cycle and 2018 cycle (at A level results day)

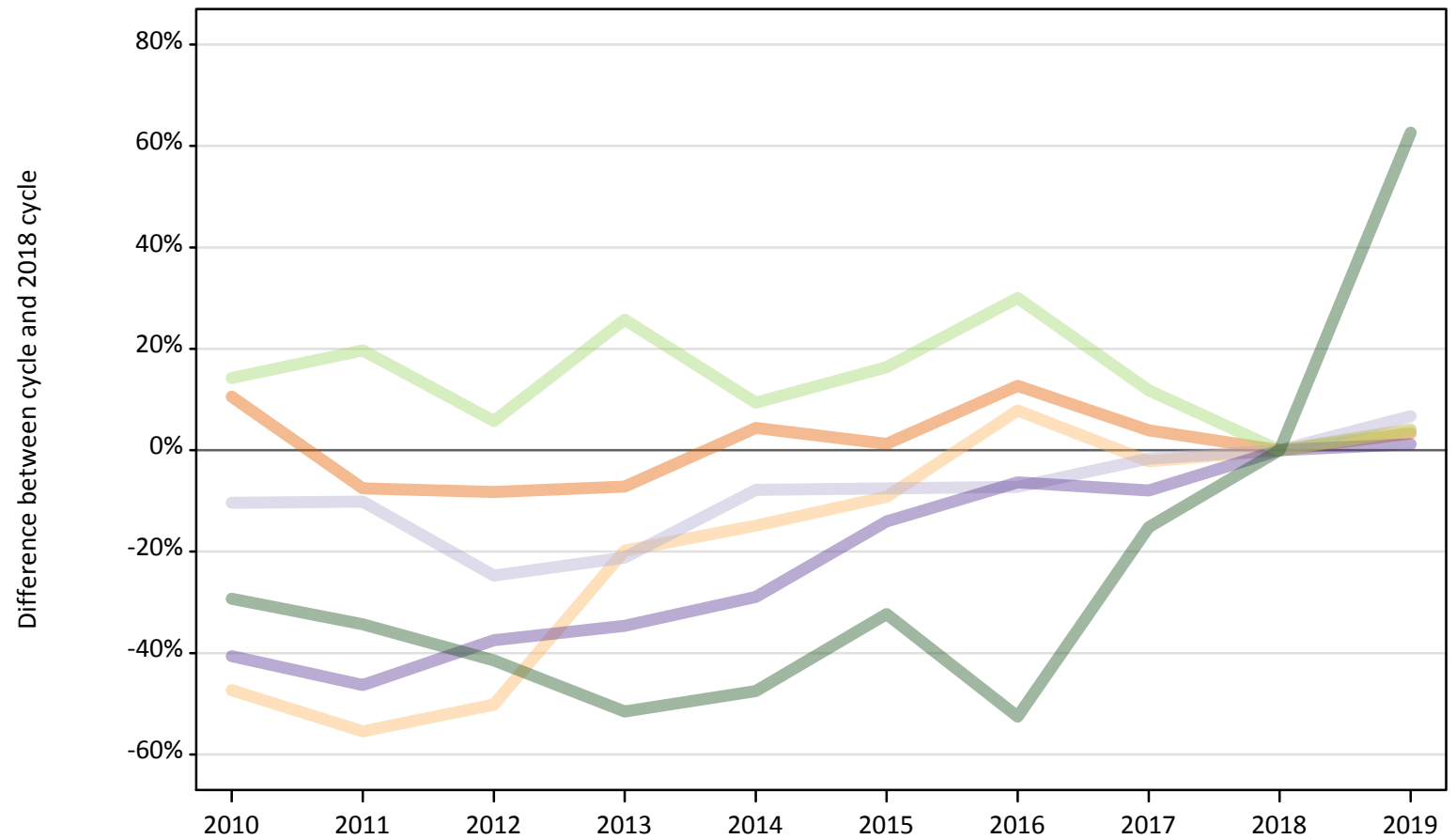
Domicile of applicant	2010	2011	2012	2013	2014	2015	2016	2017	2018	2019
England	11%	-7%	-8%	-7%	5%	1%	13%	4%	0%	4%
Northern Ireland	-25%	-20%	4%	-11%	-8%	-4%	18%	-9%	0%	-4%
Scotland	129%	93%	164%	50%	164%	64%	93%	50%	0%	21%
Wales	-13%	-11%	10%	-8%	3%	12%	8%	4%	0%	5%
EU (excluding UK)	106%	122%	87%	113%	103%	114%	140%	52%	0%	-2%
Not EU	-37%	-50%	-49%	-56%	-49%	-38%	-60%	-20%	0%	68%

Note: The percentage change is not recorded in the above table for groups with fewer than 10 placed applicants in that cycle or in the 2018 cycle.

BB.7 Placed applicants to nursing at A level results day: providers in the UK

Selected applicant domiciles: difference between cycle and 2018 cycle (at A level results day)

- England
- Northern Ireland
- Scotland
- Wales
- EU (excluding UK)
- Not EU



Note: The percentage change is not plotted in the above chart for groups with fewer than 30 placed applicants in any one cycle.

BB.8 Placed applicants to nursing at A level results day: providers in the UK

Placed applicants to nursing by domicile (at A level results day)

Domicile of applicant	2010	2011	2012	2013	2014	2015	2016	2017	2018	2019
England	17,130	14,320	14,220	14,380	16,170	15,680	17,460	16,100	15,490	16,010
Northern Ireland	480	410	460	730	780	830	990	900	920	950
Scotland	2,570	2,580	2,160	2,260	2,650	2,660	2,660	2,820	2,870	3,060
Wales	790	710	830	870	940	1,140	1,240	1,220	1,320	1,340
EU (excluding UK)	380	400	350	420	360	380	430	370	330	340
Not EU	70	70	60	50	50	70	50	80	100	160

BB.9 Placed applicants to nursing at A level results day: providers in the UK

Selected applicant domiciles: difference between cycle and 2018 cycle (at A level results day)

Domicile of applicant	2010	2011	2012	2013	2014	2015	2016	2017	2018	2019
England	11%	-8%	-8%	-7%	4%	1%	13%	4%	0%	3%
Northern Ireland	-47%	-55%	-50%	-20%	-15%	-9%	8%	-2%	0%	4%
Scotland	-10%	-10%	-25%	-21%	-8%	-7%	-7%	-2%	0%	7%
Wales	-41%	-46%	-37%	-35%	-29%	-14%	-6%	-8%	0%	1%
EU (excluding UK)	14%	20%	6%	26%	9%	16%	30%	12%	0%	4%
Not EU	-29%	-34%	-41%	-52%	-47%	-32%	-53%	-15%	0%	63%

Note: The percentage change is not recorded in the above table for groups with fewer than 10 placed applicants in that cycle or in the 2018 cycle.